



LED SECURITY WALLPACK WITH PHOTOCELL

► **DESIGN** - LED SECURITY WALLPACK WITH PHOTOCELL has a die-cast aluminum housing with excellent heat dissipation, and anti-glare PC lens with even light distribution. It is designed to operate on 120-277V circuits.

► **PHOTOCELL** - The built-in Dusk to Dawn Photocell will automatically turn the fixture on/off depending on the time of day.

► **COLOR SELECTABLE** - You can choose 3,000K warm white, 4,000K cool white or 5,000K daylight color temperature.

► **INSTALLATION** - The fixture can be mounted to a junction box or directly to a wall. Perfect commercial or industrial solution for outdoor security lighting, wall perimeter lighting, garages, storages, porches, entryways, stairways, and many other applications. It is also Wet Locations rated.

► **ADVANTAGES** - With lifespan up to 50,000 hours, these fixtures are made to last decades under normal operation! ASD provides a 5-year limited warranty along with UL certification to guarantee top quality products and safety!

Catalog number	
Notes	
Type	



Model	Watts	Voltage	Dimmable	Lumens	CCT	Finish	Dimensions (LxWxH)	Option
ASD-LSWP01-13NCC-PC	13W	120-277 V	-	1,573/1,618/1,622 lm	3CCT (3,000/4,000/5,000 K)	Black	8-1/8" x 5-3/8" x 2-13/16"	Photocell
ASD-LSWP01-18NCC-PC	18W	120-277 V	-	2,165/2,170/2,187 lm	3CCT (3,000/4,000/5,000 K)	Black	8-1/8" x 5-3/8" x 2-13/16"	Photocell
ASD-LSWP01-26NCC-PC	26W	120-277 V	-	3,313/3,344/3,385 lm	3CCT (3,000/4,000/5,000 K)	Black	8-1/8" x 5-3/8" x 2-13/16"	Photocell

ORDERING INFORMATION

Model	UPC	Pcs per carton	Carton size	Carton weight	GTIN 14
ASD-LSWP01-13NCC-PC	810050733694	8	12.8" x 11.7" x 9.1"	13.6 lbs	30810050733695
ASD-LSWP01-18NCC-PC	810050734110	8	12.8" x 11.7" x 9.1"	13.6 lbs	30810050734111
ASD-LSWP01-26NCC-PC	810050734806	8	12.8" x 11.7" x 9.1"	13.6 lbs	30810050734807

For most up-to-date spec sheets please refer to asd-lighting.com

ASD LIGHTING CORP

E-mail: orders@asd-lighting.com | Web site: www.asd-lighting.com





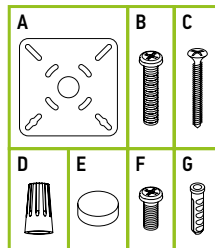
LED SECURITY WALLPACK WITH PHOTOCELL

PRODUCT SPECIFICATIONS:

Construction & Materials		
Housing	Aluminum	
Lens	PC	
Finish	Black	
Weight	1.4 lbs (0.6 kg)	
Environmental system		
Work environment	Suitable for Wet Locations	
Operating temperature	-31°F to 104°F (-35°C to 40°C)	
L-70 Life	> 50,000 hrs	
Optical system		
Luminous flux	ASD-LSWP01-13NCC-PC	1,573/1,618/1,622 lm
	ASD-LSWP01-18NCC-PC	2,165/2,170/2,187 lm
	ASD-LSWP01-26NCC-PC	3,313/3,344/3,385 lm
Color temperature	3CCT switch (3,000/4,000/5,000 K), 5,000 K by default	
CRI	> 70	
Electrical system		
Input voltage	120-277 V	
Max input current	ASD-LSWP01-13NCC-PC	0.13 A
	ASD-LSWP01-18NCC-PC	0.18 A
	ASD-LSWP01-26NCC-PC	0.26 A
Inrush current (Action time)	10 A (0.3 S)	
Off state power	0W	
Power consumption	ASD-LSWP01-13NCC-PC	13W
	ASD-LSWP01-18NCC-PC	18W
	ASD-LSWP01-26NCC-PC	26W
Power factor	> 0.9	
Output voltage	30-40 V	
Max output current	ASD-LSWP01-13NCC-PC	0.31 A
	ASD-LSWP01-18NCC-PC	0.42 A
	ASD-LSWP01-26NCC-PC	0.63 A
Regular and voluntary certifications		
5-year limited warranty		
UL certified		

PACKAGE CONTENTS:

Description	Q-ty
LED Security Wallpack with photocell	1
EVA gasket (A)	1
Screw 0.8 inch (B)	2
Self-taping screw (C)	2
Wire nut (D)	3
Rubber cap (E)	1
Screw 0.4 inch (F)	2
Anchor (G)	2
Box	1



BUILT-IN PHOTOCELL INFORMATION



- The light is always ON when luminance is 5 lux (0.5 fc) - 15 lux (1.4 fc)
- The light is always OFF when luminance is 20 lux (1.9 fc) - 60 lux (5.6 fc)

* To disable Photocell function, simply put the rubber cap on it (included).

INSTALLATION GUIDE

IMPORTANT SAFETY INFORMATION:

Please read all the instructions below before installation.

- Make sure that the supply voltage corresponds to the rated product voltage.
- The product must be installed by a qualified electrician in accordance with the National Electrical Code and corresponding local codes.
- If the product is damaged, do not use it.

⚠ WARNING

RISK OF PERSONAL INJURY – READ and follow all WARNINGS and installation instructions. Keep or give to the owner for future reference.

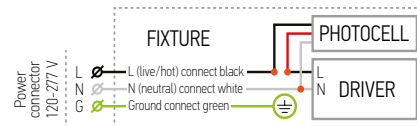
Risk of cuts: Wear gloves to prevent cuts or abrasions when removing from carton, handling, installing, and maintaining this product.

Risk of electric shock: This product must be installed in accordance with the applicable installation code by a person familiar with the construction and operation of the product and the hazards involved.

Risk of Fire: Minimum 194°F supply conductors. Consult a qualified electrician to ensure correct branch circuit conductor.

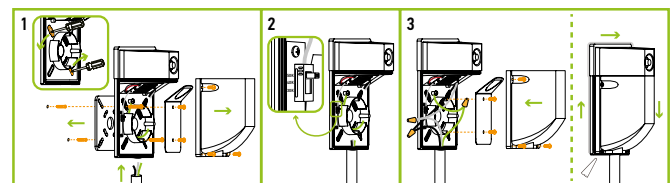
ASD® assumes no responsibility for claims arising out of improper or careless Installation or handling of this product.

ELECTRICAL SCHEMATIC DIAGRAM:



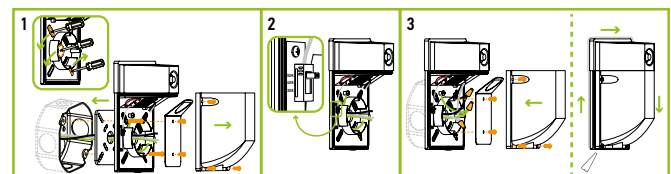
SURFACE INSTALLATION:

- Remove the lens by loosening four screws aside the lens, remove the reflector by loosening two screws. Remove the threaded plug from the bottom and plug the 1/2" conduit into the fixture. Knock out two screw holes on the back of the fixture and attach it to the surface with screws. Use the EVA gasket for a waterproof tight seal.
- Set the CCT switch to desired value by sliding it up or down.
- Connect the wires: Black to Black, White to White, Green to Green. Secure the connection with wire nuts. Reattach the reflector and the lens. For outdoor locations it is recommended to use silicone (not included).



OUTLET BOX INSTALLATION:

- Remove the lens by loosening four screws aside the lens, remove the reflector by loosening two screws. Knock out two screw holes on the back of the fixture and the center of the housing. Pull the wires from the outlet box through the center hole. Attach the fixture to the outlet box with screws. Use the EVA gasket for a waterproof tight seal.
- Set the CCT switch to desired value by sliding it up or down.
- Connect the wires: Black to Black, White to White, Green to Green. Secure the connection with wire nuts. Reattach the reflector and the lens. For outdoor locations it is recommended to use silicone (not included).



For most up-to-date spec sheets please refer to asd-lighting.com