



LED TRIMLESS COMBO DOWNLIGHT

► **DESIGN** - LED TRIMLESS COMBO DOWNLIGHT with multi-directional adjustable swivel heads produces a high light output with minimal glare as a result of its regressed light source. It includes a mud frame to be plastered over, giving it a smooth trimless look. It features durable airtight aluminum housing, multifaceted specular reflector with a 38° beam angle, and anti-glare PC lens. It is designed to operate on 120V circuits with triac dimming.

► **COLOR SELECTABLE** - You can choose either a 2,700K soft white, 3,000K warm white, 3,500K neutral white, 4,000K cool white, or 5,000K daylight color temperature.

► **CR190+** - rating provides rich and natural colors and keeps your space looking and feeling vibrant. True bright colors can also improve your mood and general health.

► **INSTALLATION** - This fixture is IC rated so there is no can or any other housing required. It is also Wet Locations rated, making it perfect for any spaces with humidity requirements. Perfect for retail, hospitality, or any other commercial space with a high ceiling.

► **ADVANTAGES** - With a lifespan of 50,000 hours, these fixtures are made to last decades under normal operation! ASD provides a 5-year limited warranty along with ETL certification to guarantee top quality products and safety!

<i>Catalog number</i>	
<i>Notes</i>	
<i>Type</i>	



Model	Size	Light heads	Watts	Voltage	Dimmable	Lumens	CCT	Trim color	Dimensions
ASD-TCS-1D15WH	3.5 inch	1	15W	120 V	TRIAC	1,008/1,071/1,191/1,234/1,203 lm	5CCT (2,700/3,000/3,500/4,000/5,000 K)	White	6-3/8" x 6-3/8" x 3-1/8"
ASD-TCS-2D30WH	3.5 inch	2	30W	120 V	TRIAC	1,720/1,831/2,040/2,112/2,043 lm	5CCT (2,700/3,000/3,500/4,000/5,000 K)	White	10-1/8" x 6-3/8" x 3-1/8"
ASD-TCS-3D45WH	3.5 inch	3	45W	120 V	TRIAC	2,732/2,910/3,200/3,308/3,215 lm	5CCT (2,700/3,000/3,500/4,000/5,000 K)	White	13-15/16" x 6-3/8" x 3-1/8"

ORDERING INFORMATION

Model	UPC	Pcs. per carton	Carton size	Carton weight	GTIN 14
ASD-TCS-1D15WH	810128112345	18	21.5" x 14.4" x 15.2"	40.8 lbs	10810128112342
ASD-TCS-2D30WH	810128112352	8	22.2" x 14" x 12"	33.6 lbs	10810128112359
ASD-TCS-3D45WH	810128112369	4	15" x 14" x 12"	21.6 lbs	20810128112363

For most up-to-date spec sheets please refer to asd-lighting.com

ASD LIGHTING CORP

E-mail: orders@asd-lighting.com | Web site: www.asd-lighting.com





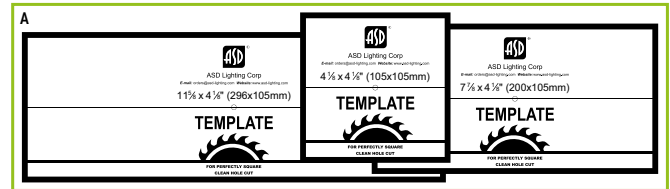
LED TRIMLESS COMBO DOWNLIGHT

PRODUCT SPECIFICATIONS:

Construction & Materials		Optical system				
Housing	Aluminum	Luminous flux	ASD-TCS-1D15WH	1,008/1,071/1,191/1,234/1,203 lm		
Lens	PC		ASD-TCS-2D30WH	1,720/1,831/2,040/2,112/2,043 lm		
Trim color	White		ASD-TCS-3D45WH	2,732/2,910/3,200/3,308/3,215 lm		
Weight	ASD-TCS-1D15WH	1.9 lbs (0.9 kg)	Color temperature	5CCT switch (2,700/3,000/3,500/4,000/5,000 K), 5,000 K by default		
	ASD-TCS-2D30WH	1.5 lbs (0.7 kg)	CRI	> 90		
	ASD-TCS-3D45WH	4.6 lbs (2.1 kg)	Dimming compatible controls			
Environmental system		Brand	Lutron	Leviton	Pass & Seymour	
Work environment	Suitable for Wet Locations	Models	DVCL-153PDH	CTCL-153P	6672	HCL453PTCCCV6
Operating temperature	-4°F to 104°F (-20°C to 40°C)		DVCL-153P	CT-600P	6674	
L-70 Life	> 50,000 hrs	Regular and voluntary certifications				
Electrical system		5-year limited warranty	cETLus certified	5003560		
Input voltage	120 V					
Max input current	ASD-TCS-1D15WH	0.15 A				
	ASD-TCS-2D30WH	0.30 A				
	ASD-TCS-3D45WH	0.45 A				
Inrush current (Action time)	6 A (0.5 S)					
Off state power	0W					
Power consumption	ASD-TCS-1D15WH	15W				
	ASD-TCS-2D30WH	30W				
	ASD-TCS-3D45WH	45W				
Power factor	> 0.9					
Output voltage	36 V					
Max output current	ASD-TCS-1D15WH	0.34 A				
	ASD-TCS-2D30WH	0.68 A				
	ASD-TCS-3D45WH	1.02 A				
Surge protection DM/CM	2.5 kV / 2.5 kV					

PACKAGE CONTENTS:

Description	Q-ty
LED Trimless Combo Downlight	1
Template for single, double or triple (A)	1
Box	1



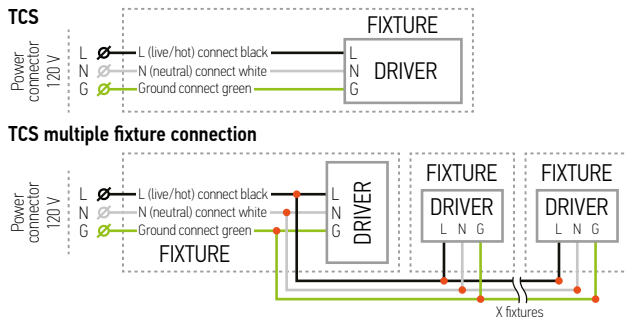
INSTALLATION GUIDE

IMPORTANT SAFETY INFORMATION:

Please read all the instructions below before installation.

- ▶ Make sure that the supply voltage corresponds to the rated product voltage.
- ▶ The product must be installed by a qualified electrician in accordance with the National Electrical Code and corresponding local codes.
- ▶ If the product is damaged, do not use it.

ELECTRICAL SCHEMATIC DIAGRAM:

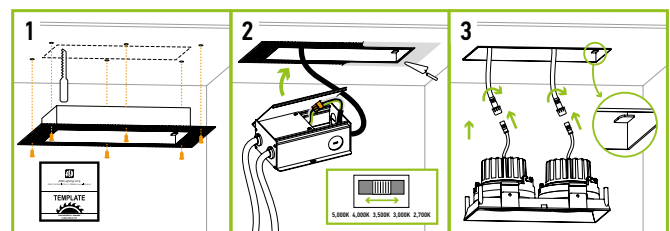


⚠ WARNING

RISK OF PERSONAL INJURY – READ and follow all WARNINGS and installation instructions. Keep or give to the owner for future reference.
Risk of cuts: Wear gloves to prevent cuts or abrasions when removing from carton, handling, installing, and maintaining this product.
Risk of electric shock: This product must be installed in accordance with the applicable installation code by a person familiar with the construction and operation of the product and the hazards involved.
Risk of Fire: Minimum 194°F supply conductors. Consult a qualified electrician to ensure correct branch circuit conductor.
 ASD® assumes no responsibility for claims arising out of improper or careless installation or handling of this product.

INSTALLATION STEPS:

1. Remove the Zero Clearance frame from the fixture. Cut the hole in the ceiling using template (included). Insert the Zero Clearance frame into the cut-hole, secure it with screws.
2. Plaster the frame. Connect the wires: Black to Black, White to White, Green to Green. Select color temperature you need using switch. Put the driver box above the ceiling through the hole in the frame.
3. Connect driver box and fixture using quick connector, insert fixture into the frame.



For most up-to-date spec sheets please refer to asd-lighting.com