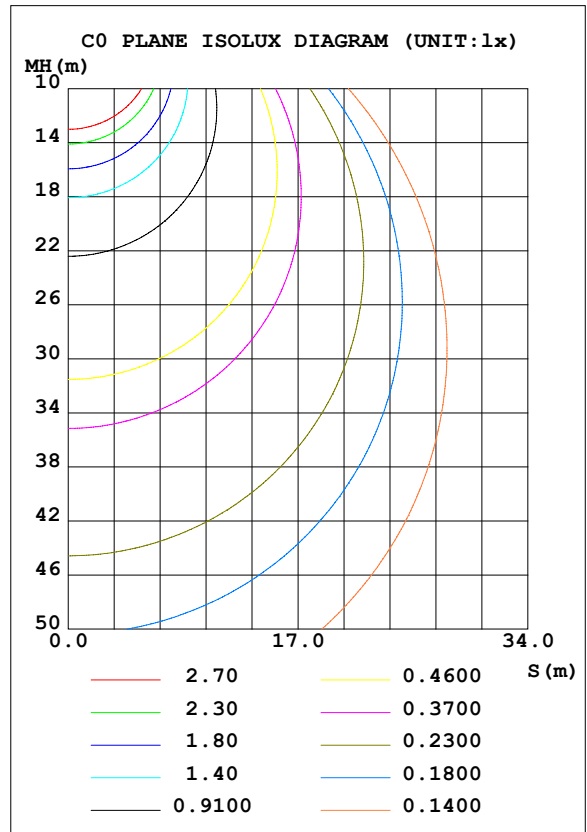
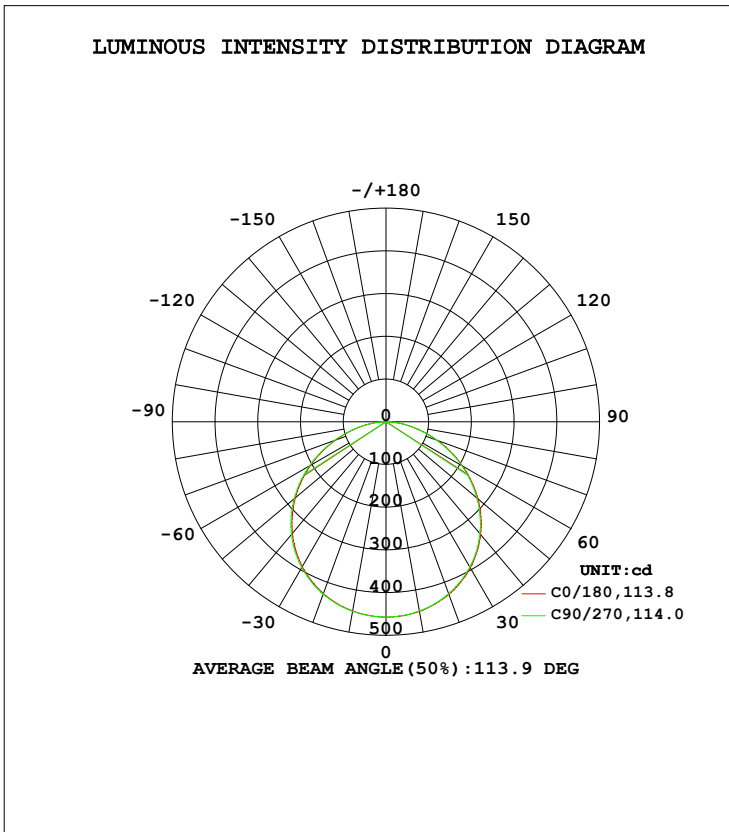


LUMINAIRE PHOTOMETRIC TEST REPORT

Test:U:120.0V I:0.1596A P:18.11W PF:0.9454 Lamp Flux:1335.54x1 lm		
NAME: ASD Lighting corp	TYPE:N/A	WEIGHT:N/A
SPEC.:ASD-MPR-9D1850-WH	DIM.: N/A	SERIAL No.:N/A
MFR.: ASD Lighting corp	SUR.:N/A	Shielding Angle:N/A

DATA OF LAMP		PHOTOMETRIC DATA Eff: 73.75 lm/W			
MODEL	ASD-MPR-9D1850-WH	I <sub>max</sub> (cd)	457.5	S/MH (C0/180)	1.28
NOMINAL POWER (W)		LOR (%)	100.0	S/MH (C90/270)	1.28
RATED VOLTAGE (V)	120	TOTAL FLUX (lm)	1335.5	η UP, DN (C0-180)	0.1, 50.0
NOMINAL FLUX (lm)	1335.54	CIE CLASS	DIRECT	η UP, DN (C180-360)	0.0, 49.8
LAMPS INSIDE	1	η up (%)	0.1	CIBSE SHR NOM	1.25
TEST VOLTAGE (V)	120	η down (%)	99.9	CIBSE SHR MAX	1.35



C Range: 0 - 360DEG  
 C Interval: 22.5DEG  
 Test Speed: HIGH  
 Temperature: 24.9DEG  
 Operators: East  
 Test Date: 2020-05-27

γ Range: 0 - 180DEG  
 γ Interval: 1.0DEG  
 Test System: EVERFINE GO-R5000\_V2 SYSTEM V2.0.351  
 Humidity: 45%  
 Test Distance: 2.485m [K=1.0000]  
 Remarks:

ZONAL FLUX DIAGRAM

ZONAL FLUX DIAGRAM:

γ	C0	C45	C90	C135	C180	C225	C270	C315	γ	Φ zone	Φ total	%lum, lamp
10	449.7	450.3	450.7	450.8	450.8	450.4	449.8	449.7	0- 10	43.31	43.31	3.24,3.24
20	428.3	429.0	429.6	430.0	430.1	429.4	428.6	428.2	10- 20	124.6	168.0	12.6,12.6
30	391.9	392.9	394.3	394.9	394.7	393.4	392.6	392.1	20- 30	190.4	358.4	26.8,26.8
40	340.9	342.2	344.2	345.2	344.6	342.9	341.9	341.8	30- 40	231.3	589.7	44.2,44.2
50	276.9	278.3	280.7	281.9	280.8	279.0	278.0	278.1	40- 50	240.9	830.6	62.2,62.2
60	203.5	204.5	206.9	208.1	207.1	204.8	204.4	204.9	50- 60	217.3	1048	78.5,78.5
70	125.8	126.6	128.5	129.6	128.4	126.2	125.9	126.9	60- 70	164.8	1213	90.8,90.8
80	53.66	53.80	55.71	55.45	54.85	52.85	52.97	54.28	70- 80	94.57	1307	97.9,97.9
90	2.355	2.542	2.590	1.491	0.0826	0.0434	0.0410	0.0663	80- 90	26.52	1334	99.9,99.9
100	0.1309	0.1297	0.1297	0.1319	0.0551	0.0581	0.0547	0.0549	90-100	0.1529	1334	99.9,99.9
110	0.1614	0.1606	0.1625	0.1664	0.1077	0.1060	0.0964	0.0975	100-110	0.1182	1334	99.9,99.9
120	0.2087	0.2079	0.2119	0.2170	0.1694	0.1656	0.1535	0.1550	110-120	0.1561	1334	99.9,99.9
130	0.3109	0.3108	0.3162	0.3225	0.2316	0.2277	0.2132	0.2157	120-130	0.2009	1334	99.9,99.9
140	0.4949	0.4957	0.5016	0.5084	0.2882	0.2856	0.2727	0.2721	130-140	0.2504	1335	99.9,99.9
150	0.7407	0.7414	0.7462	0.7452	0.3471	0.3448	0.3380	0.3332	140-150	0.2932	1335	100,100
160	0.9050	0.9072	0.9123	0.9184	0.4351	0.4380	0.4304	0.4257	150-160	0.2821	1335	100,100
170	0.8338	0.8370	0.8417	0.8447	0.4858	0.5094	0.5054	0.5019	160-170	0.1919	1335	100,100
180	0.6593	0.6778	0.6816	0.6678	0.6758	0.6759	0.6800	0.6800	170-180	0.0639	1336	100,100
DEG	LUMINOUS INTENSITY:cd Less than 25% Percent = 8.8 %									UNIT:lm		

Conical surface Flux(90deg): 711.06 lm

%lum = 53.2%  
%lamp = 53.2%

Conical surface Flux(120deg): 1047.9 lm

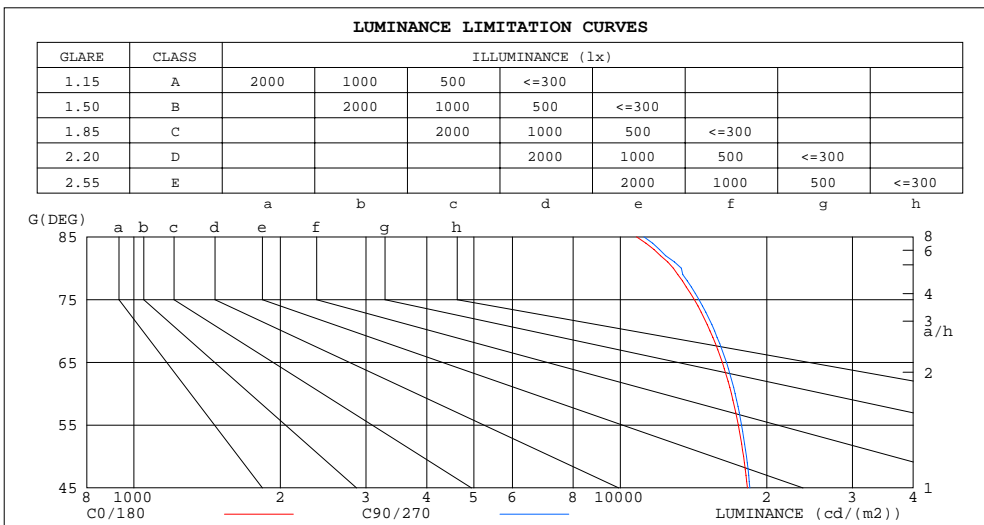
%lum = 78.5%  
%lamp = 78.5%

C Range: 0 - 360DEG  
C Interval: 22.5DEG  
Test Speed: HIGH  
Temperature:24.9DEG  
Operators:East  
Test Date:2020-05-27

γ Range: 0 - 180DEG  
γ Interval: 1.0DEG  
Test System:EVERFINE GO-R5000\_V2 SYSTEM V2.0.351  
Humidity:45%  
Test Distance:2.485m [K=1.0000]  
Remarks:

LUMINANCE LIMITATION CURVES

Test:U:120.0V I:0.1596A P:18.11W PF:0.9454 Lamp Flux:1335.54x1 lm		
NAME: ASD Lighting corp	TYPE:N/A	WEIGHT:N/A
SPEC.:ASD-MPR-9D1850-WH	DIM.: N/A	SERIAL No.:N/A
MFR.: ASD Lighting corp	SUR.:N/A	Shielding Angle:N/A



LUMINANCE cd/(m2)		
G(DEG)	C0/180	C90/270
85	10797	11179
80	12849	13345
75	14190	14505
70	15291	15629
65	16202	16522
60	16922	17215
55	17476	17747
50	17917	18164
45	18251	18461

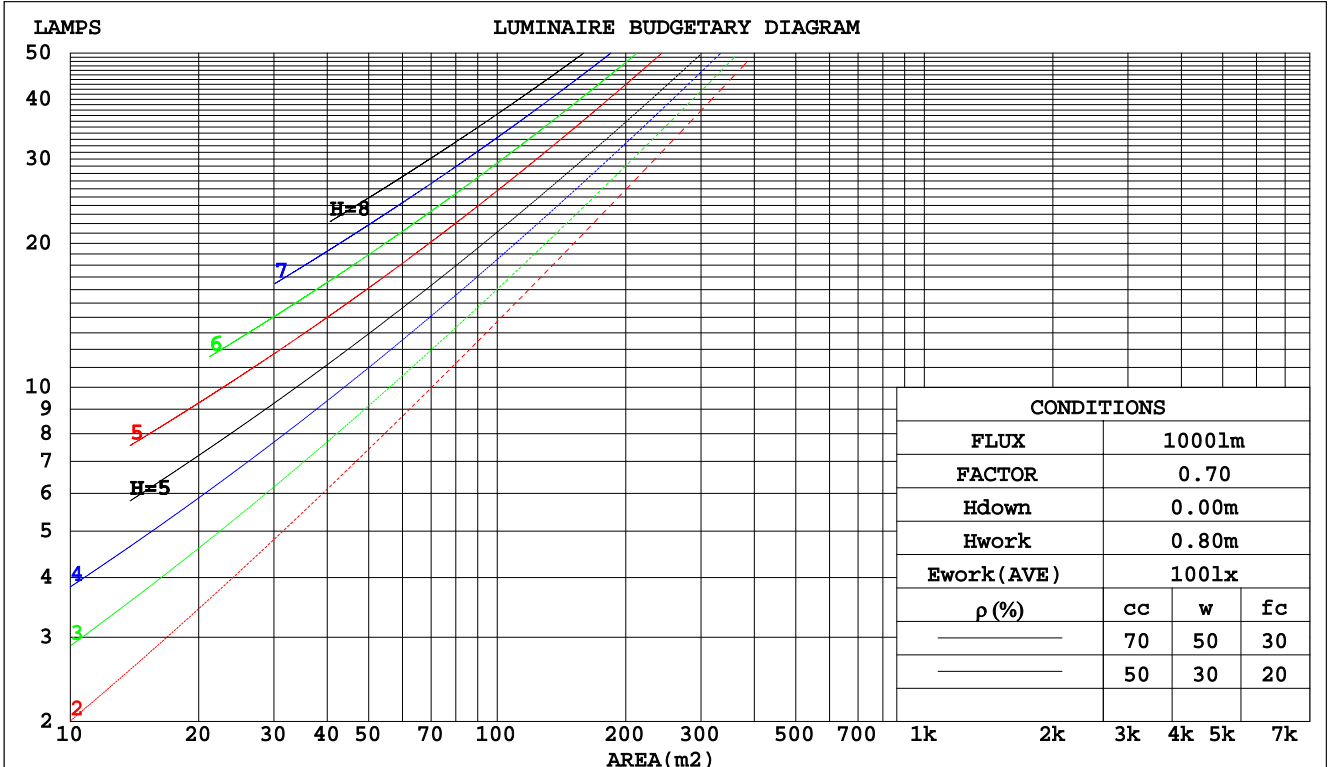
C Range: 0 - 360DEG  
 C Interval: 22.5DEG  
 Test Speed: HIGH  
 Temperature:24.9DEG  
 Operators:East  
 Test Date:2020-05-27

$\gamma$  Range: 0 - 180DEG  
 $\gamma$  Interval: 1.0DEG  
 Test System:EVERFINE GO-R5000\_V2 SYSTEM V2.0.351  
 Humidity:45%  
 Test Distance:2.485m [K=1.0000]  
 Remarks:

CU AND LUMINAIRE BUDGETARY ESTIMATE DIAGRAM

Test:U:120.0V I:0.1596A P:18.11W PF:0.9454 Lamp Flux:1335.54x1 lm		
NAME: ASD Lighting corp	TYPE:N/A	WEIGHT:N/A
SPEC.:ASD-MPR-9D1850-WH	DIM.: N/A	SERIAL No.:N/A
MFR.: ASD Lighting corp	SUR.:N/A	Shielding Angle:N/A

pcc	80%			70%			50%			30%			10%			0
pw	50%	30%	10%	50%	30%	10%	50%	30%	10%	50%	30%	10%	50%	30%	10%	0
pfc	20%			20%			20%			20%			20%			0
RCR	RCR:Room Cavity Ratio															
	Coefficients of Utilization(CU)															
0.0	1.19	1.19	1.19	1.16	1.16	1.16	1.11	1.11	1.11	1.06	1.06	1.06	1.02	1.02	1.02	.00
1.0	1.04	.99	.96	1.01	.98	.94	.97	.94	.91	.93	.91	.88	.90	.87	.85	.83
2.0	.90	.83	.78	.88	.82	.77	.85	.79	.75	.81	.77	.73	.78	.75	.71	.69
3.0	.79	.71	.64	.78	.70	.64	.75	.68	.63	.72	.66	.61	.69	.64	.60	.58
4.0	.70	.61	.54	.69	.60	.54	.66	.59	.53	.64	.58	.52	.62	.56	.52	.50
5.0	.63	.53	.47	.61	.53	.46	.59	.52	.46	.57	.51	.45	.55	.50	.45	.43
6.0	.56	.47	.41	.55	.47	.41	.53	.46	.40	.52	.45	.40	.50	.44	.39	.37
7.0	.51	.42	.36	.50	.42	.36	.49	.41	.35	.47	.40	.35	.46	.40	.35	.33
8.0	.46	.38	.32	.46	.38	.32	.44	.37	.32	.43	.36	.31	.42	.36	.31	.29
9.0	.43	.34	.29	.42	.34	.29	.41	.34	.28	.40	.33	.28	.39	.33	.28	.26
10.0	.39	.31	.26	.39	.31	.26	.38	.31	.26	.37	.30	.26	.36	.30	.26	.24



C Range: 0 - 360DEG  
 C Interval: 22.5DEG  
 Test Speed: HIGH  
 Temperature:24.9DEG  
 Operators:East  
 Test Date:2020-05-27

γ Range: 0 - 180DEG  
 γ Interval: 1.0DEG  
 Test System:EVERFINE GO-R5000\_V2 SYSTEM V2.0.351  
 Humidity:45%  
 Test Distance:2.485m [K=1.0000]  
 Remarks:

WEC AND CCEC

Test:U:120.0V I:0.1596A P:18.11W PF:0.9454 Lamp Flux:1335.54x1 lm		
NAME: ASD Lighting corp	TYPE:N/A	WEIGHT:N/A
SPEC.:ASD-MPR-9D1850-WH	DIM.: N/A	SERIAL No.:N/A
MFR.: ASD Lighting corp	SUR.:N/A	Shielding Angle:N/A

ρcc	80%			70%			50%			30%			10%			0
ρw	50%	30%	10%	50%	30%	10%	50%	30%	10%	50%	30%	10%	50%	30%	10%	0
ρfc	20%			20%			20%			20%			20%			0
RCR	RCR:Room Cavity Ratio						Wall Exitance Coefficients(WEC)									
0.0																
1.0	.312	.177	.056	.305	.174	.055	.291	.167	.053	.279	.161	.052	.268	.155	.050	
2.0	.293	.161	.049	.287	.158	.049	.275	.153	.047	.264	.148	.046	.254	.144	.045	
3.0	.271	.144	.043	.266	.142	.043	.255	.138	.042	.245	.135	.041	.237	.131	.041	
4.0	.250	.130	.038	.245	.128	.038	.236	.125	.037	.227	.122	.037	.219	.119	.036	
5.0	.231	.118	.034	.227	.116	.034	.219	.114	.034	.211	.111	.033	.204	.109	.033	
6.0	.214	.107	.031	.210	.106	.031	.203	.104	.030	.196	.102	.030	.190	.100	.030	
7.0	.199	.099	.028	.196	.098	.028	.189	.096	.028	.183	.094	.027	.178	.092	.027	
8.0	.186	.091	.026	.183	.090	.025	.177	.089	.025	.172	.087	.025	.167	.086	.025	
9.0	.174	.084	.024	.172	.084	.023	.166	.082	.023	.162	.081	.023	.157	.080	.023	
10.0	.164	.079	.022	.162	.078	.022	.157	.077	.022	.152	.076	.022	.148	.074	.021	

ρcc	80%			70%			50%			30%			10%			0
ρw	50%	30%	10%	50%	30%	10%	50%	30%	10%	50%	30%	10%	50%	30%	10%	0
ρfc	20%			20%			20%			20%			20%			0
RCR	RCR:Room Cavity Ratio						Ceiling Cavity Exitance Coefficients(CCEC)									
0.0	.191	.191	.191	.164	.164	.164	.112	.112	.112	.064	.064	.064	.021	.021	.021	
1.0	.181	.157	.135	.155	.135	.116	.106	.093	.080	.061	.054	.047	.020	.017	.015	
2.0	.173	.133	.099	.149	.114	.085	.102	.079	.060	.059	.046	.035	.019	.015	.011	
3.0	.166	.115	.075	.142	.099	.065	.098	.069	.046	.056	.040	.027	.018	.013	.009	
4.0	.158	.102	.059	.136	.088	.051	.093	.061	.036	.054	.036	.021	.017	.012	.007	
5.0	.151	.092	.048	.129	.079	.042	.089	.055	.030	.052	.033	.018	.017	.011	.006	
6.0	.143	.083	.040	.123	.072	.035	.085	.050	.025	.049	.030	.015	.016	.010	.005	
7.0	.137	.076	.034	.118	.066	.030	.081	.046	.021	.047	.027	.013	.015	.009	.004	
8.0	.130	.071	.030	.112	.061	.026	.078	.043	.018	.045	.025	.011	.015	.008	.004	
9.0	.124	.066	.026	.107	.057	.023	.074	.040	.016	.043	.024	.010	.014	.008	.003	
10.0	.118	.061	.023	.102	.053	.020	.071	.037	.015	.041	.022	.009	.013	.007	.003	

C Range: 0 - 360DEG  
 C Interval: 22.5DEG  
 Test Speed: HIGH  
 Temperature:24.9DEG  
 Operators:East  
 Test Date:2020-05-27

γ Range: 0 - 180DEG  
 γ Interval: 1.0DEG  
 Test System:EVERFINE GO-R5000\_V2 SYSTEM V2.0.351  
 Humidity:45%  
 Test Distance:2.485m [K=1.0000]  
 Remarks:

UGR(Unified Glare Rating) Table

Test:U:120.0V I:0.1596A P:18.11W PF:0.9454 Lamp Flux:1335.54x1 lm										
NAME: ASD Lighting corp					TYPE:N/A			WEIGHT:N/A		
SPEC.:ASD-MPR-9D1850-WH					DIM.: N/A			SERIAL No.:N/A		
MFR.: ASD Lighting corp					SUR.:N/A			Shielding Angle:N/A		
ceiling/cavity	0.7	0.7	0.5	0.5	0.3	0.7	0.7	0.5	0.5	0.3
walls	0.5	0.3	0.5	0.3	0.3	0.5	0.3	0.5	0.3	0.3
working plane	0.2	0.2	0.2	0.2	0.2	0.2	0.2	0.2	0.2	0.2
Room dimensions	Viewed crosswise					Viewed endwise				
x = 2H y = 2H	22.8	24.3	23.1	24.5	24.7	22.9	24.4	23.1	24.6	24.8
3H	24.3	25.7	24.6	25.9	26.2	24.4	25.8	24.7	26.0	26.3
4H	24.9	26.2	25.2	26.5	26.7	25.0	26.3	25.3	26.6	26.8
6H	25.3	26.6	25.6	26.9	27.1	25.4	26.7	25.7	27.0	27.2
8H	25.4	26.7	25.8	27.0	27.2	25.6	26.8	25.9	27.1	27.4
12H	25.5	26.7	25.9	27.0	27.3	25.6	26.8	26.0	27.1	27.4
4H 2H	23.4	24.7	23.7	25.0	25.3	23.5	24.8	23.8	25.1	25.3
3H	25.1	26.3	25.4	26.6	26.9	25.1	26.3	25.5	26.6	26.9
4H	25.8	26.9	26.2	27.2	27.5	25.9	27.0	26.3	27.3	27.6
6H	26.4	27.3	26.8	27.7	28.0	26.4	27.4	26.8	27.8	28.1
8H	26.5	27.4	27.0	27.8	28.2	26.6	27.5	27.1	27.9	28.3
12H	26.7	27.5	27.1	27.9	28.3	26.8	27.6	27.2	28.0	28.4
8H 4H	26.1	27.0	26.5	27.3	27.7	26.1	27.0	26.5	27.4	27.8
6H	26.8	27.5	27.2	27.9	28.3	26.9	27.6	27.3	28.0	28.4
8H	27.0	27.7	27.5	28.1	28.6	27.1	27.8	27.6	28.2	28.7
12H	27.2	27.8	27.7	28.3	28.7	27.3	27.9	27.8	28.3	28.8
12H 4H	26.1	26.9	26.5	27.3	27.7	26.1	27.0	26.6	27.4	27.8
6H	26.8	27.5	27.3	27.9	28.4	26.9	27.6	27.4	28.0	28.4
8H	27.1	27.7	27.6	28.2	28.6	27.2	27.8	27.7	28.2	28.7
Variations with the observer position at spacings:										
S = 1.0H	+ 0.2 / - 0.2					+ 0.2 / - 0.2				
1.5H	+ 0.2 / - 0.3					+ 0.2 / - 0.3				
2.0H	+ 0.2 / - 0.3					+ 0.2 / - 0.3				

CIE Pub.117 Corrected 1336 lm Total Lamp Luminous Flux.(8log(F/F0) = 1.0)

C Range: 0 - 360DEG  
 C Interval: 22.5DEG  
 Test Speed: HIGH  
 Temperature:24.9DEG  
 Operators:East  
 Test Date:2020-05-27

γ Range: 0 - 180DEG  
 γ Interval: 1.0DEG  
 Test System:EVERFINE GO-R5000\_V2 SYSTEM V2.0.351  
 Humidity:45%  
 Test Distance:2.485m [K=1.0000]  
 Remarks:

**UTILIZATION FACTORS TABLE**

Test:U:120.0V I:0.1596A P:18.11W PF:0.9454 Lamp Flux:1335.54x1 lm		
NAME: ASD Lighting corp	TYPE:N/A	WEIGHT:N/A
SPEC.:ASD-MPR-9D1850-WH	DIM.: N/A	SERIAL No.:N/A
MFR.: ASD Lighting corp	SUR.:N/A	Shielding Angle:N/A

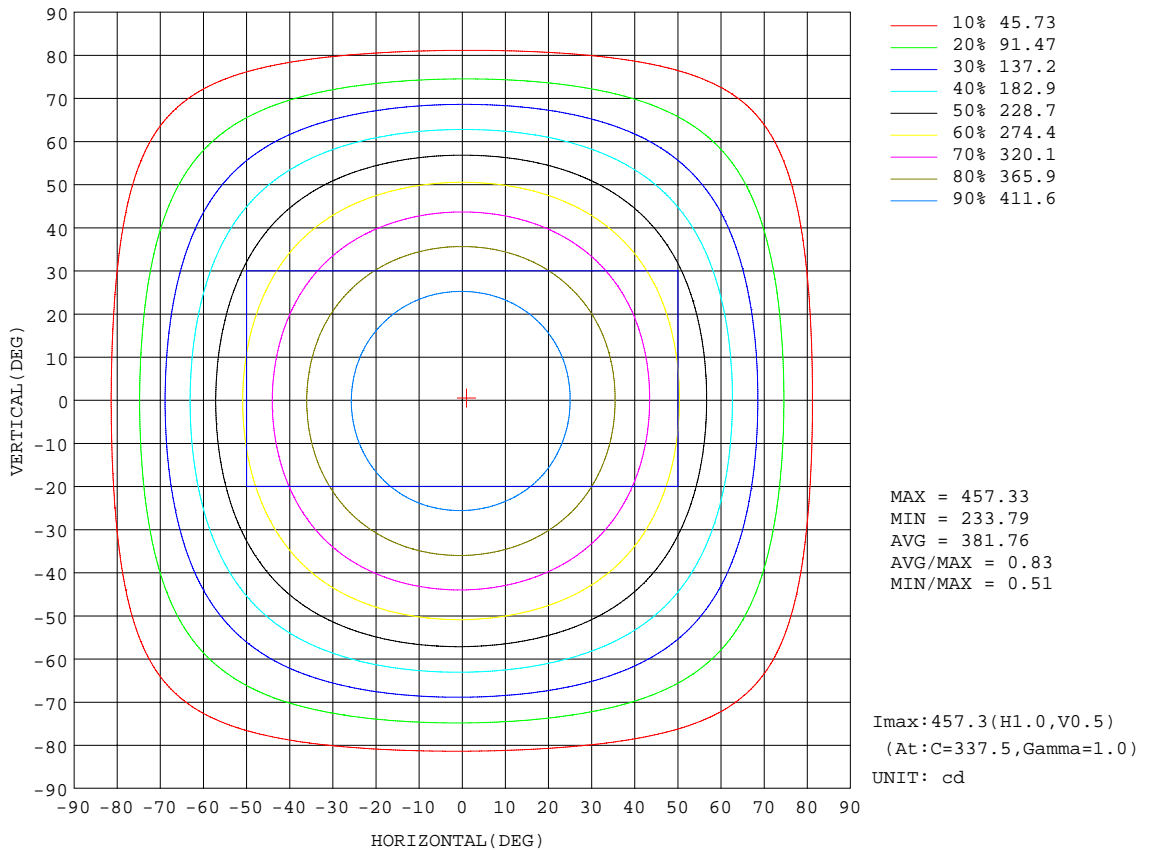
REFLECTANCE										
Ceiling	0.8	0.8	0.8	0.7	0.7	0.7	0.5	0.5	0.5	0
Walls	0.7	0.5	0.3	0.7	0.5	0.3	0.7	0.5	0.3	0
Working plane	0.2	0.2	0.2	0.2	0.2	0.2	0.2	0.2	0.2	0
ROOM INDEX	UTILIZATION FACTORS(PERCENT) $k(RI) \times RCR = 5$									
k = 0.60	57	46	39	56	45	38	55	45	38	32
0.80	67	56	48	66	55	48	64	54	48	41
1.00	76	65	57	75	64	57	72	65	56	49
1.25	83	72	65	81	72	65	79	70	64	57
1.50	88	78	71	86	77	70	83	75	69	62
2.00	95	86	80	93	85	79	89	83	77	69
2.50	99	91	85	97	89	84	93	87	82	74
3.00	102	95	90	100	94	89	96	91	86	78
4.00	106	100	96	104	99	94	99	95	92	83
5.00	109	104	100	106	102	98	102	98	95	86
ROOM INDEX	UF(total)									Direct
According to DIN EN 13032-2 2004			Suspended				SHRNOM = 1.25			

C Range: 0 - 360DEG  
 C Interval: 22.5DEG  
 Test Speed: HIGH  
 Temperature:24.9DEG  
 Operators:East  
 Test Date:2020-05-27

$\gamma$  Range: 0 - 180DEG  
 $\gamma$  Interval: 1.0DEG  
 Test System:EVERFINE GO-R5000\_V2 SYSTEM V2.0.351  
 Humidity:45%  
 Test Distance:2.485m [K=1.0000]  
 Remarks:

ISOCANDELA DIAGRAM

Test:U:120.0V I:0.1596A P:18.11W PF:0.9454 Lamp Flux:1335.54x1 lm		
NAME: ASD Lighting corp	TYPE:N/A	WEIGHT:N/A
SPEC.: ASD-MPR-9D1850-WH	DIM.: N/A	SERIAL No.:N/A
MFR.: ASD Lighting corp	SUR.:N/A	Shielding Angle:N/A



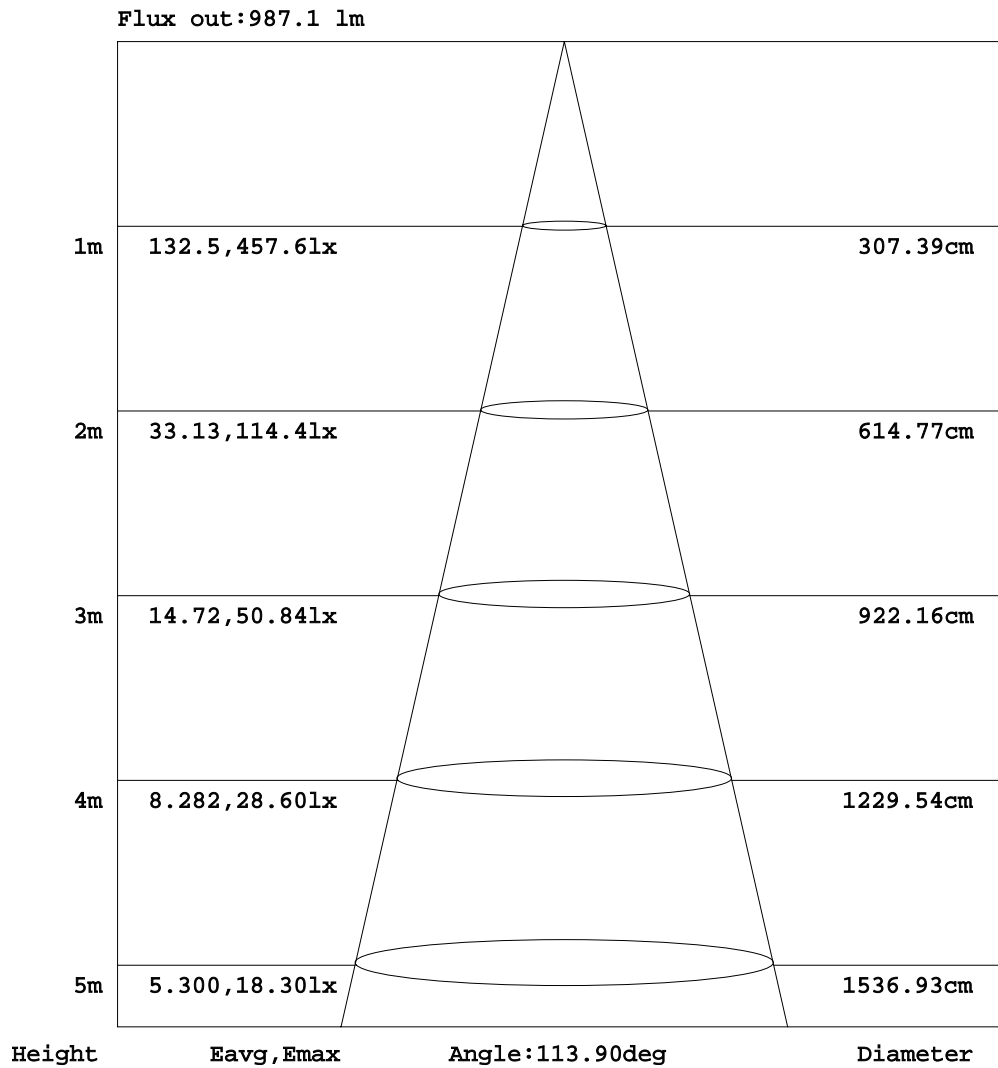
C Range: 0 - 360DEG  
 C Interval: 22.5DEG  
 Test Speed: HIGH  
 Temperature:24.9DEG  
 Operators:East  
 Test Date:2020-05-27

$\gamma$  Range: 0 - 180DEG  
 $\gamma$  Interval: 1.0DEG  
 Test System:EVERFINE GO-R5000\_V2 SYSTEM V2.0.351  
 Humidity:45%  
 Test Distance:2.485m [K=1.0000]  
 Remarks:



AAI Figure

Test:U:120.0V I:0.1596A P:18.11W PF:0.9454 Lamp Flux:1335.54x1 lm		
NAME: ASD Lighting corp	TYPE:N/A	WEIGHT:N/A
SPEC.: ASD-MPR-9D1850-WH	DIM.: N/A	SERIAL No.:N/A
MFR.: ASD Lighting corp	SUR.:N/A	Shielding Angle:N/A



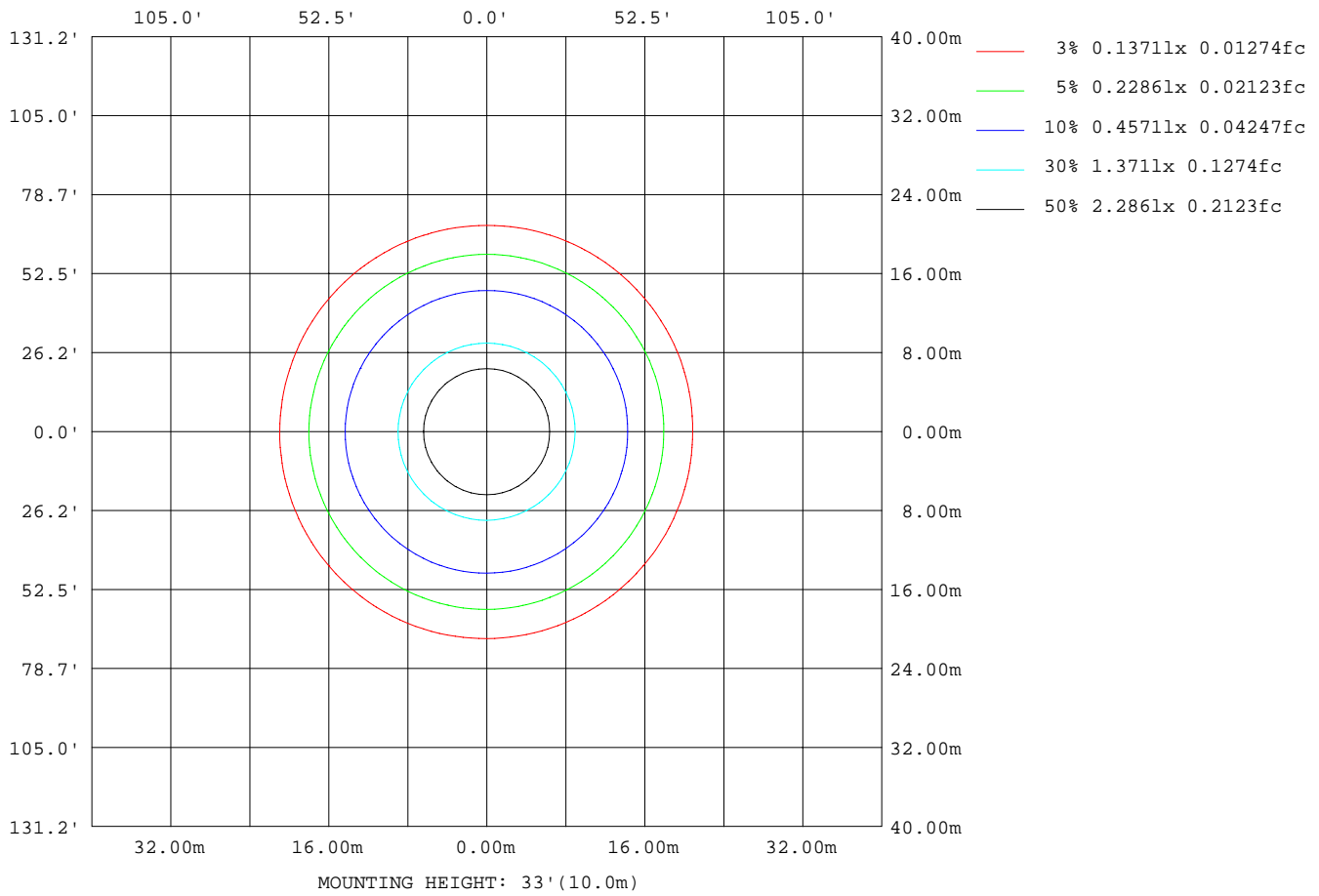
Note:The Curves indicate the illuminated area and the average illumination when the luminaire is at different distance.

C Range: 0 - 360DEG  
 C Interval: 22.5DEG  
 Test Speed: HIGH  
 Temperature:24.9DEG  
 Operators:East  
 Test Date:2020-05-27

γ Range: 0 - 180DEG  
 γ Interval: 1.0DEG  
 Test System:EVERFINE GO-R5000\_V2 SYSTEM V2.0.351  
 Humidity:45%  
 Test Distance:2.485m [K=1.0000]  
 Remarks:

**ISOLUX DIAGRAM**

Test:U:120.0V I:0.1596A P:18.11W PF:0.9454 Lamp Flux:1335.54x1 lm		
NAME: ASD Lighting corp	TYPE:N/A	WEIGHT:N/A
SPEC.:ASD-MPR-9D1850-WH	DIM.: N/A	SERIAL No.:N/A
MFR.: ASD Lighting corp	SUR.:N/A	Shielding Angle:N/A



C Range: 0 - 360DEG  
 C Interval: 22.5DEG  
 Test Speed: HIGH  
 Temperature:24.9DEG  
 Operators:East  
 Test Date:2020-05-27

γ Range: 0 - 180DEG  
 γ Interval: 1.0DEG  
 Test System:EVERFINE GO-R5000\_V2 SYSTEM V2.0.351  
 Humidity:45%  
 Test Distance:2.485m [K=1.0000]  
 Remarks:

**LED Avg.L Report**

Test:U:120.0V I:0.1596A P:18.11W PF:0.9454 Lamp Flux:1335.54x1 lm		
NAME: ASD Lighting corp	TYPE:N/A	WEIGHT:N/A
SPEC.:ASD-MPR-9D1850-WH	DIM.: N/A	SERIAL No.:N/A
MFR.: ASD Lighting corp	SUR.:N/A	Shielding Angle:N/A

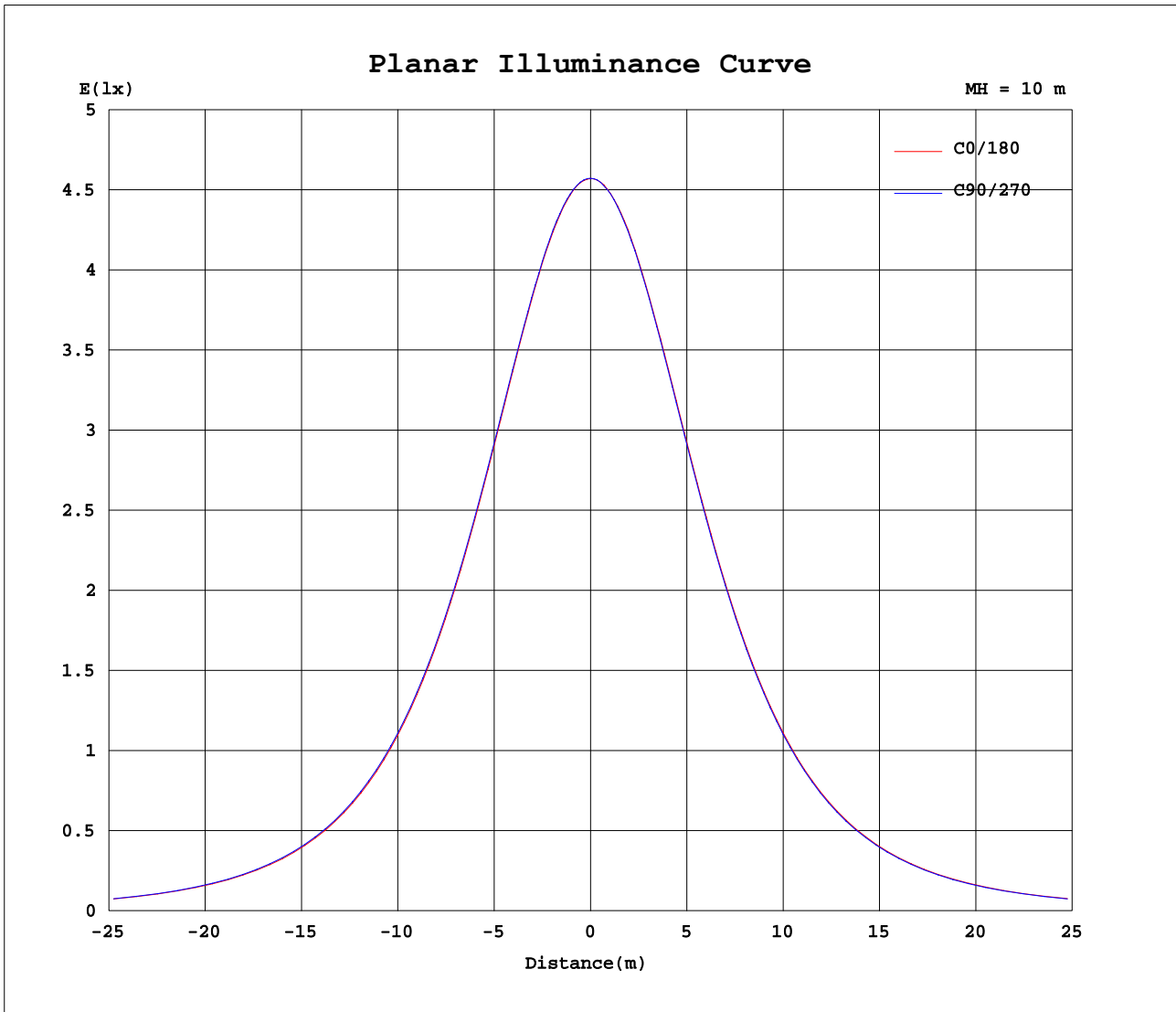
AvgL	cd/m2
L_0~180 (65) av	16372
L_0~180 (75) av	14330
L_0~180 (85) av	11054
L_90~270 (65) av	16399
L_90~270 (75) av	14309
L_90~270 (85) av	10951
L_45 (65) av	16410
L_45 (75) av	14352
L_45 (85) av	11035

Standard: GB/T 29293-2012

C Range: 0 - 360DEG  
 C Interval: 22.5DEG  
 Test Speed: HIGH  
 Temperature:24.9DEG  
 Operators:East  
 Test Date:2020-05-27

γ Range: 0 - 180DEG  
 γ Interval: 1.0DEG  
 Test System:EVERFINE GO-R5000\_V2 SYSTEM V2.0.351  
 Humidity:45%  
 Test Distance:2.485m [K=1.0000]  
 Remarks:

Planar Illuminance Curve



C Range: 0 - 360DEG  
 C Interval: 22.5DEG  
 Test Speed: HIGH  
 Temperature: 24.9DEG  
 Operators: East  
 Test Date: 2020-05-27

$\gamma$  Range: 0 - 180DEG  
 $\gamma$  Interval: 1.0DEG  
 Test System: EVERFINE GO-R5000\_V2 SYSTEM V2.0.351  
 Humidity: 45%  
 Test Distance: 2.485m [K=1.0000]  
 Remarks:

LUMINOUS DISTRIBUTION INTENSITY DATA

Test:U:120.0V I:0.1596A P:18.11W PF:0.9454 Lamp Flux:1335.54x1 lm		
NAME: ASD Lighting corp	TYPE:N/A	WEIGHT:N/A
SPEC.:ASD-MPR-9D1850-WH	DIM.: N/A	SERIAL No.:N/A
MFR.: ASD Lighting corp	SUR.:N/A	Shielding Angle:N/A

Table--1

UNIT: cd

C (DEG) \ γ (DEG)	0	22.5	45	67.5	90	112.5	135	157.5	180	202.5	225	247.5	270	292.5	315	337.5			
0	457	457	457	457	457	457	457	457	457	457	457	457	457	457	457	457			
5	455	455	455	456	456	456	456	456	456	455	456	455	455	455	455	455			
10	450	450	450	450	451	451	451	451	451	450	450	450	450	450	450	449			
15	441	441	441	441	442	442	442	442	442	442	442	441	441	441	441	441			
20	428	428	429	429	430	430	430	430	430	429	429	429	429	429	428	428			
25	412	412	413	413	414	414	414	414	414	413	413	413	412	412	412	412			
30	392	392	393	393	394	395	395	395	395	394	393	393	393	392	392	392			
35	368	368	369	370	371	372	372	372	371	371	370	369	369	369	368	369			
40	341	341	342	343	344	345	345	345	345	343	343	342	342	342	342	342			
45	310	310	312	313	314	315	315	314	314	313	312	312	311	311	311	311			
50	277	277	278	279	281	282	282	281	281	279	279	278	278	278	278	278			
55	241	241	242	243	245	246	246	245	245	244	243	242	242	243	243	242			
60	203	204	204	205	207	208	208	207	207	206	205	204	204	205	205	205			
65	165	165	166	167	168	169	169	168	168	167	166	165	165	166	166	166			
70	126	126	127	127	129	129	130	129	128	127	126	126	126	127	127	127			
75	88.3	88.3	88.8	89.3	90.3	91.2	91.4	90.6	90.0	88.7	87.9	87.5	87.8	88.6	89.1	89.3			
80	53.7	53.5	53.8	54.3	55.7	55.9	55.4	55.7	54.9	53.6	52.8	52.7	53.0	53.7	54.3	54.6			
85	22.6	22.7	22.9	23.1	23.4	23.7	23.7	23.2	23.7	23.0	22.5	22.2	22.5	23.0	23.4	23.7			
90	2.36	2.46	2.54	2.60	2.59	2.56	1.49	2.38	0.08	0.06	0.04	0.04	0.04	0.05	0.07	0.12			
95	0.11	0.11	0.11	0.11	0.11	0.11	0.11	0.11	0.04	0.04	0.04	0.04	0.04	0.04	0.04	0.04			
100	0.13	0.13	0.13	0.13	0.13	0.13	0.13	0.13	0.06	0.06	0.06	0.06	0.06	0.05	0.05	0.06			
105	0.15	0.15	0.15	0.15	0.15	0.15	0.15	0.15	0.07	0.08	0.08	0.08	0.07	0.07	0.07	0.07			
110	0.16	0.16	0.16	0.16	0.16	0.17	0.17	0.17	0.11	0.10	0.11	0.10	0.10	0.10	0.10	0.10			
115	0.18	0.18	0.18	0.18	0.18	0.19	0.19	0.19	0.14	0.14	0.13	0.13	0.12	0.13	0.12	0.12			
120	0.21	0.21	0.21	0.21	0.21	0.22	0.22	0.22	0.17	0.17	0.17	0.16	0.15	0.16	0.15	0.15			
125	0.25	0.25	0.25	0.25	0.25	0.26	0.26	0.26	0.20	0.20	0.20	0.19	0.18	0.19	0.19	0.19			
130	0.31	0.31	0.31	0.31	0.32	0.32	0.32	0.33	0.23	0.22	0.23	0.22	0.21	0.22	0.22	0.22			
135	0.39	0.39	0.39	0.39	0.40	0.40	0.40	0.41	0.26	0.25	0.26	0.25	0.24	0.25	0.25	0.24			
140	0.49	0.49	0.50	0.50	0.50	0.51	0.51	0.51	0.29	0.28	0.29	0.28	0.27	0.28	0.27	0.27			
145	0.63	0.63	0.63	0.63	0.63	0.64	0.64	0.64	0.32	0.31	0.32	0.31	0.31	0.31	0.30	0.30			
150	0.74	0.74	0.74	0.74	0.75	0.75	0.75	0.76	0.35	0.34	0.34	0.34	0.34	0.34	0.33	0.33			
155	0.84	0.84	0.84	0.84	0.85	0.85	0.85	0.86	0.39	0.39	0.39	0.39	0.39	0.38	0.38	0.38			
160	0.91	0.90	0.91	0.91	0.91	0.91	0.92	0.92	0.44	0.44	0.44	0.43	0.43	0.41	0.43	0.43			
165	0.89	0.89	0.89	0.89	0.89	0.90	0.90	0.91	0.47	0.47	0.47	0.47	0.47	0.45	0.46	0.46			
170	0.83	0.83	0.84	0.82	0.84	0.84	0.84	0.85	0.49	0.49	0.51	0.51	0.51	0.49	0.50	0.50			
175	0.79	0.79	0.79	0.77	0.77	0.78	0.78	0.78	0.56	0.56	0.56	0.56	0.56	0.58	0.58	0.58			
180	0.66	0.66	0.68	0.68	0.68	0.68	0.67	0.67	0.68	0.67	0.68	0.68	0.68	0.68	0.68	0.68			

C Range: 0 - 360DEG  
 C Interval: 22.5DEG  
 Test Speed: HIGH  
 Temperature:24.9DEG  
 Operators:East  
 Test Date:2020-05-27

γ Range: 0 - 180DEG  
 γ Interval: 1.0DEG  
 Test System:EVERFINE GO-R5000\_V2 SYSTEM V2.0.351  
 Humidity:45%  
 Test Distance:2.485m [K=1.0000]  
 Remarks: