



LED VANITY LIGHT

LVF24M series

- ▶ **DESIGN** - LED VANITY LIGHT has a sleek, modern design that allows you to have a stylish look with efficient lighting. Durable housing resistant to rust and impact provides many years of service. The acrylic lens grants you even light distribution. It is designed to operate on 120V circuits.
- ▶ **COLOR SELECTABLE** - You can choose either a 3,000K warm white, 4,000K cool white or 5,000K daylight color temperature.
- ▶ **DIMMING** - Smooth triac dimming capabilities ranging from 10% to 100% with modern LED dimmers allow you to control the look and feel of your space.
- ▶ **APPLICATION** - This fixture creates a bright light that is perfect for bathroom spaces or any other common areas. It is also Damp Locations rated.
- ▶ **ADVANTAGES** - With a lifespan of 50,000 hours, these fixtures are made to last decades under normal operation! ASD provides a 5-year limited warranty along with ETL certification to guarantee top quality products and safety!

Catalog number	
Notes	
Type	



Model	Number of lights	Watts	Voltage	Dimmable	Lumens	CCT	Finish	Dimensions (LxWxH)
ASD-LVF24M-2D12CC-CH	2 light	12W	120 V	TRIAC	895/996/927 lm	3CCT (3,000/4,000/5,000 K)	Chrome	15" x 5-1/8" x 3-3/16"
ASD-LVF24M-2D12CC-BK	2 light	12W	120 V	TRIAC	570/652/607 lm	3CCT (3,000/4,000/5,000 K)	Black	15" x 5-1/8" x 3-3/16"
ASD-LVF24M-3D15CC-CH	3 light	15W	120 V	TRIAC	1,116/1,211/1,138 lm	3CCT (3,000/4,000/5,000 K)	Chrome	18-1/8" x 5-1/8" x 3-3/16"
ASD-LVF24M-3D15CC-BK	3 light	15W	120 V	TRIAC	742/843/787 lm	3CCT (3,000/4,000/5,000 K)	Black	18-1/8" x 5-1/8" x 3-3/16"
ASD-LVF24M-4D23CC-CH	4 light	23W	120 V	TRIAC	1,697/1,869/1,734 lm	3CCT (3,000/4,000/5,000 K)	Chrome	24" x 5-1/8" x 3-3/16"
ASD-LVF24M-4D23CC-BK	4 light	23W	120 V	TRIAC	1,130/1,297/1,207 lm	3CCT (3,000/4,000/5,000 K)	Black	24" x 5-1/8" x 3-3/16"
ASD-LVF24M-5D28CC-CH	5 light	28W	120 V	TRIAC	2,069/2,308/2,140 lm	3CCT (3,000/4,000/5,000 K)	Chrome	29-15/16" x 5-1/8" x 3-3/16"
ASD-LVF24M-5D28CC-BK	5 light	28W	120 V	TRIAC	1,389/1,604/1,488 lm	3CCT (3,000/4,000/5,000 K)	Black	29-15/16" x 5-1/8" x 3-3/16"
ASD-LVF24M-6D35CC-CH	6 light	35W	120 V	TRIAC	2,494/2,768/2,563 lm	3CCT (3,000/4,000/5,000 K)	Chrome	36" x 5-1/8" x 3-3/16"
ASD-LVF24M-6D35CC-BK	6 light	35W	120 V	TRIAC	1,765/2,025/1,867 lm	3CCT (3,000/4,000/5,000 K)	Black	36" x 5-1/8" x 3-3/16"

For most up-to-date spec sheets please refer to asd-lighting.com



LED VANITY LIGHT

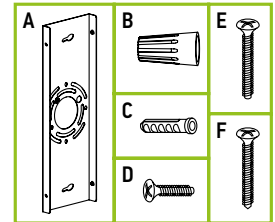
LVF24M series

PRODUCT SPECIFICATIONS:

Construction & Materials						
Housing	Steel					
Lens	Acrylic					
Finish	Chrome, Black					
Weight	ASD-LVF24M-2D12CC-CH	4.3 lbs (2 kg)	ASD-LVF24M-4D23CC-CH	7.3 lbs (3.3 kg)	ASD-LVF24M-6D35CC-CH	11.2 lbs (5.1 kg)
	ASD-LVF24M-2D12CC-BK		ASD-LVF24M-4D23CC-BK		ASD-LVF24M-6D35CC-BK	
	ASD-LVF24M-3D15CC-CH	5.3 lbs (2.4 kg)	ASD-LVF24M-5D28CC-CH	9.2 lbs (4.2 kg)		
	ASD-LVF24M-3D15CC-BK		ASD-LVF24M-5D28CC-BK			
Environmental system						
Work environment	Suitable for Damp Locations					
Operating temperature	-4°F to 113°F (-20°C to 45°C)					
L-70 life	> 50,000 hrs					
Optical system						
Luminous flux	ASD-LVF24M-2D12CC-CH	895/996/927 lm	ASD-LVF24M-4D23CC-CH	1,697/1,869/1,734 lm	ASD-LVF24M-6D35CC-CH	2,494/2,768/2,563 lm
	ASD-LVF24M-2D12CC-BK	570/652/607 lm	ASD-LVF24M-4D23CC-BK	1,130/1,297/1,207 lm	ASD-LVF24M-6D35CC-BK	1,765/2,025/1,867 lm
	ASD-LVF24M-3D15CC-CH	1,116/1,211/1,138 lm	ASD-LVF24M-5D28CC-CH	2,069/2,308/2,140 lm		
	ASD-LVF24M-3D15CC-BK	742/843/787 lm	ASD-LVF24M-5D28CC-BK	1,389/1,604/1,488 lm		
Color temperature	3CCT switch (3,000/4,000/5,000 K), 3,000 K by default					
CRI	> 80					
Electrical system						
Input voltage	120 V					
Max input current	ASD-LVF24M-2D12CC-CH	0.11 A	ASD-LVF24M-4D23CC-CH	0.21 A	ASD-LVF24M-6D35CC-CH	0.32 A
	ASD-LVF24M-2D12CC-BK		ASD-LVF24M-4D23CC-BK		ASD-LVF24M-6D35CC-BK	
	ASD-LVF24M-3D15CC-CH	0.14 A	ASD-LVF24M-5D28CC-CH	0.26 A		
	ASD-LVF24M-3D15CC-BK		ASD-LVF24M-5D28CC-BK			
Inrush current (Action time)	ASD-LVF24M-2D12CC-CH	0.1 A (0.1 S)	ASD-LVF24M-4D23CC-CH	0.19 A (0.1 S)	ASD-LVF24M-6D35CC-CH	0.29 A (0.1 S)
	ASD-LVF24M-2D12CC-BK		ASD-LVF24M-4D23CC-BK		ASD-LVF24M-6D35CC-BK	
	ASD-LVF24M-3D15CC-CH	0.13 A (0.1 S)	ASD-LVF24M-5D28CC-CH	0.23 A (0.1 S)		
	ASD-LVF24M-3D15CC-BK		ASD-LVF24M-5D28CC-BK			
Off state power	0W					
Power consumption	ASD-LVF24M-2D12CC-CH	12W	ASD-LVF24M-4D23CC-CH	23W	ASD-LVF24M-6D35CC-CH	35W
	ASD-LVF24M-2D12CC-BK		ASD-LVF24M-4D23CC-BK		ASD-LVF24M-6D35CC-BK	
	ASD-LVF24M-3D15CC-CH	15W	ASD-LVF24M-5D28CC-CH	28W		
	ASD-LVF24M-3D15CC-BK		ASD-LVF24M-5D28CC-BK			
Power factor	> 0.9					
Output voltage	36 V					
Max output current	ASD-LVF24M-2D12CC-CH	0.28 A	ASD-LVF24M-4D23CC-CH	0.6 A	ASD-LVF24M-6D35CC-CH	0.85 A
	ASD-LVF24M-2D12CC-BK		ASD-LVF24M-4D23CC-BK		ASD-LVF24M-6D35CC-BK	
	ASD-LVF24M-3D15CC-CH	0.35 A	ASD-LVF24M-5D28CC-CH	0.7 A		
	ASD-LVF24M-3D15CC-BK		ASD-LVF24M-5D28CC-BK			
Surge protection DM/CM	1.25 kV / 1.25 kV					
Dimming range						
10-100%						
Dimming compatible controls						
Brand	Lutron		Leviton			
Models	MACL-153MLH-WH	DVCL-153PR	R02-DW6HD-2RW	DSL06		
	STCL-153PH-WH	P-PKG1W	R00-RNL06-0TW			
	PD-6WCL-WH-R		R68-06674-P0T			
Regular and voluntary certifications						
5-year limited warranty		cETLus certified 4001256				

PACKAGE CONTENTS:

Description	Q-ty
LED Vanity Light	1
Mounting plate (A)	1
Wire nut (B)	3
Anchor (C)	2
Fixture screw (D)	4
Mounting screw (E)	2
Self-tapping screw (F)	2
Box	1



For most up-to-date spec sheets please refer to asd-lighting.com



LED VANITY LIGHT

LVF24M series

INSTALLATION GUIDE

IMPORTANT SAFETY INFORMATION:

Please read all the instructions below before installation.

- ▶ Make sure that the supply voltage corresponds to the rated product voltage.
- ▶ The product must be installed by a qualified electrician in accordance with the National Electrical Code and corresponding local codes.
- ▶ If the product is damaged, do not use it.

⚠ WARNING

RISK OF PERSONAL INJURY – READ and follow all WARNINGS and installation instructions. Keep or give to the owner for future reference.

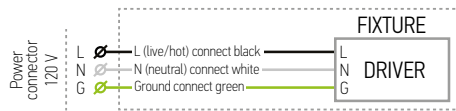
Risk of cuts: Wear gloves to prevent cuts or abrasions when removing from carton, handling, installing, and maintaining this product.

Risk of electric shock: This product must be installed in accordance with the applicable installation code by a person familiar with the construction and operation of the product and the hazards involved.

Risk of Fire: Minimum 194°F supply conductors. Consult a qualified electrician to ensure correct branch circuit conductor.

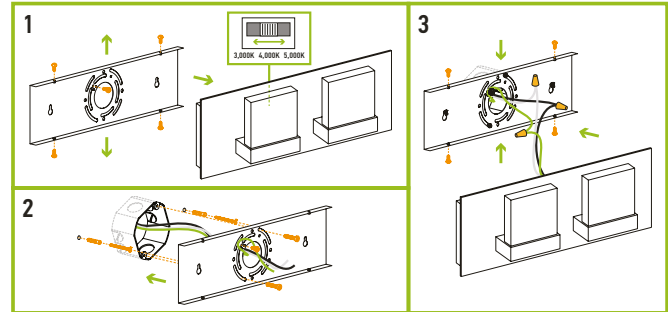
ASD® assumes no responsibility for claims arising out of improper or careless installation or handling of this product.

ELECTRICAL SCHEMATIC DIAGRAM:



INSTALLATION STEPS:

1. The LVF24 can be installed either right side up or upside down. Unscrew the four fixture screws from both sides of the fixture and remove the mounting plate. Choose preferred color temperature on the back side of the fixture by adjusting switch position.
2. Place the mounting plate against the wall covering the outlet box, mark placement of the narrow end of mounting keyhole slots. Remove the mounting plate and drill two appropriate sized holes for anchors, insert anchors into the holes, twist two self-tapping screws into the anchors. Attach the mounting plate to the wall with two mounting screws and tighten self-tapping screws.
3. Connect the wires: Black to Black, White to White, Ground to Ground. Secure the connection with wire nuts. Attach the fixture body to the mounting plate using four fixture screws.



ORDERING INFORMATION

Model	UPC	Pcs. per carton	Carton size	Carton weight	GTIN 14
ASD-LVF24M-2D12CC-CH	810128110853	4	17.5" x 10.6" x 15.2"	22 lbs	20810128110857
ASD-LVF24M-2D12CC-BK	810128110792	4	17.5" x 10.6" x 15.2"	22 lbs	20810128110796
ASD-LVF24M-3D15CC-CH	810128110860	4	20.7" x 10.6" x 15.2"	25.3 lbs	20810128110864
ASD-LVF24M-3D15CC-BK	810128110815	4	20.7" x 10.6" x 15.2"	25.3 lbs	20810128110819
ASD-LVF24M-4D23CC-CH	810128110884	2	26.6" x 10.6" x 7.9"	17.3 lbs	20810128110888
ASD-LVF24M-4D23CC-BK	810128110822	2	26.6" x 10.6" x 7.9"	17.3 lbs	20810128110826
ASD-LVF24M-5D28CC-CH	810128110891	2	32.5" x 10.6" x 7.9"	21.6 lbs	20810128110895
ASD-LVF24M-5D28CC-BK	810128110839	2	32.5" x 10.6" x 7.9"	21.6 lbs	20810128110833
ASD-LVF24M-6D35CC-CH	810128110808	2	38.6" x 10.6" x 7.9"	26.1 lbs	20810128110802
ASD-LVF24M-6D35CC-BK	810128110846	2	38.6" x 10.6" x 7.9"	26.1 lbs	20810128110840

For most up-to-date spec sheets please refer to asd-lighting.com

ASD LIGHTING CORP

E-mail: orders@asd-lighting.com | Web site: www.asd-lighting.com

