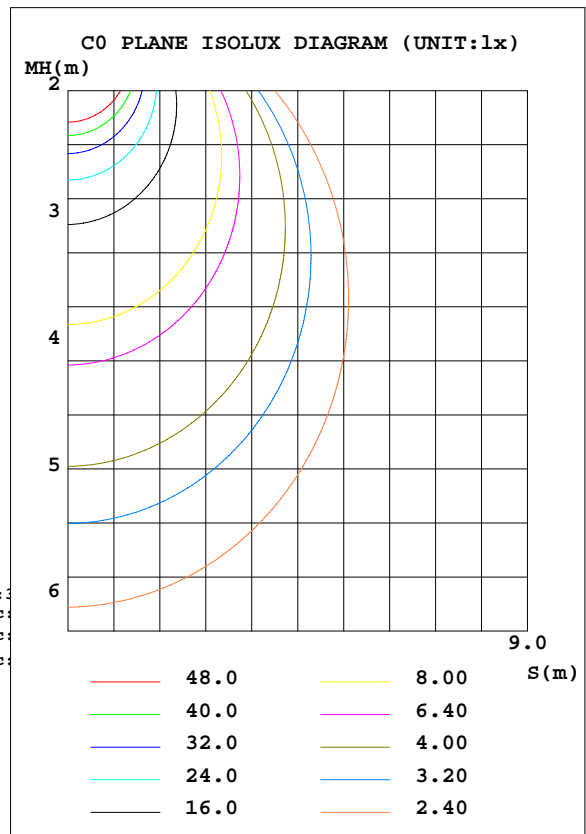
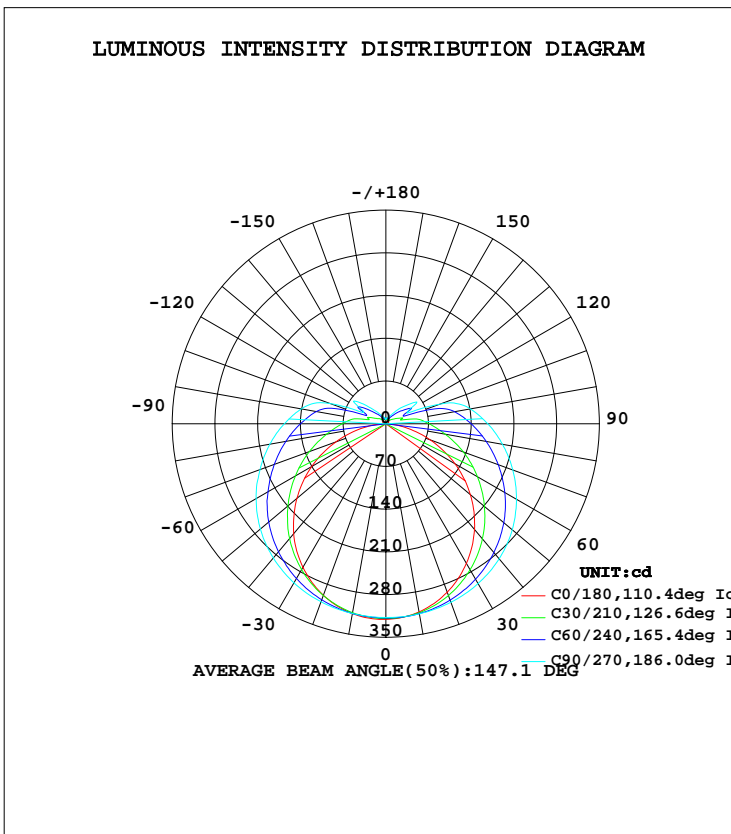


LUMINAIRE PHOTOMETRIC TEST REPORT

Test:U:119.9V I:0.2046A P:24.25W PF:0.9881 Lamp Flux:1517.66x1 lm		
NAME: ASD-LVF23-24D25CC-NK	TYPE:	WEIGHT:
SPEC.:	DIM.:	SERIAL No.:
MFR.: ASD Lighting corp.	SUR.:	PROTECTION ANGLE:

DATA OF LAMP		PHOTOMETRIC DATA Eff: 62.58 lm/W			
MODEL	ASD-LVF23-24D25CC-NK	I <sub>max</sub> (cd)	320.7	S/MH(C0/180)	1.26
NOMINAL POWER(W)	25	LOR(%)	100.0	S/MH(C90/270)	1.43
RATED VOLTAGE(V)	120	TOTAL FLUX(lm)	1517.7	η UP, DN(C0-180)	8.4,41.5
NOMINAL FLUX(lm)	1517.66	CIE CLASS	SEMI-D.	η UP, DN(C180-360)	8.6,41.5
LAMPS INSIDE	1	η up(%)	17.0	CIBSE SHR NOM	1.50
TEST VOLTAGE(V)	119.9	η down(%)	83.0	CIBSE SHR MAX	1.55



C Range: 0 - 360DEG  
 C Interval: 15.0DEG  
 Test Speed: HIGH  
 Temperature:25.3DEG  
 Operators:wxh  
 Test Date:2019-05-06

γ Range: 0 - 180DEG  
 γ Interval: 1.0DEG  
 Test System:EVERFINE GO-2000B\_V1 SYSTEM V2.0.291  
 Humidity:65.0%  
 Test Distance:7.500m [K=1.0000]  
 Remarks:

## ZONAL FLUX DIAGRAM

## ZONAL FLUX DIAGRAM:

$\gamma$	C0	C45	C90	C135	C180	C225	C270	C315	$\gamma$	$\Phi$ zone	$\Phi$ total	$\Phi$ lum,lamp
10	313.1	315.3	316.3	312.9	315.9	314.9	315.9	312.9	0- 10	30.17	30.17	1.99,1.99
20	293.9	304.0	311.3	301.9	299.2	302.8	310.5	301.7	10- 20	87.44	117.6	7.75,7.75
30	264.0	285.8	302.4	284.4	271.7	284.2	301.1	284.3	20- 30	135.9	253.5	16.7,16.7
40	226.0	261.9	288.9	261.5	235.2	259.8	287.0	261.1	30- 40	170.9	424.4	28,28
50	180.9	233.8	270.4	234.6	190.4	230.9	268.5	233.3	40- 50	189.7	614.1	40.5,40.5
60	130.4	201.7	247.1	203.6	140.6	199.6	245.5	203.0	50- 60	191.3	805.4	53.1,53.1
70	77.14	168.6	221.3	171.8	87.56	167.2	219.5	171.3	60- 70	177.6	983.0	64.8,64.8
80	28.38	137.1	194.2	141.4	36.71	136.5	193.1	141.0	70- 80	152.8	1136	74.8,74.8
90	4.025	109.7	167.1	114.6	5.434	109.6	166.4	113.9	80- 90	124.1	1260	83,83
100	4.143	86.16	140.7	91.06	4.426	87.26	140.8	90.62	90-100	98.87	1359	89.5,89.5
110	4.721	28.79	94.94	33.01	5.058	32.71	96.69	31.93	100-110	67.92	1427	94,94
120	5.637	36.71	42.41	40.78	5.886	39.16	44.68	41.18	110-120	32.22	1459	96.1,96.1
130	6.383	22.65	50.07	26.75	6.457	22.81	52.59	24.10	120-130	27.22	1486	97.9,97.9
140	6.858	12.23	29.83	15.26	7.030	13.72	28.65	13.82	130-140	15.68	1502	99,99
150	7.159	8.549	16.04	10.12	7.506	10.25	17.03	9.291	140-150	8.107	1510	99.5,99.5
160	7.110	7.899	12.21	8.464	7.490	8.331	12.35	8.669	150-160	4.532	1514	99.8,99.8
170	7.509	8.288	9.341	7.383	7.580	7.318	9.872	8.150	160-170	2.404	1517	99.9,99.9
180	9.282	9.320	7.679	9.309	9.305	9.309	7.691	9.309	170-180	0.7800	1518	100,100
DEG	LUMINOUS INTENSITY:cd									UNIT:lm		

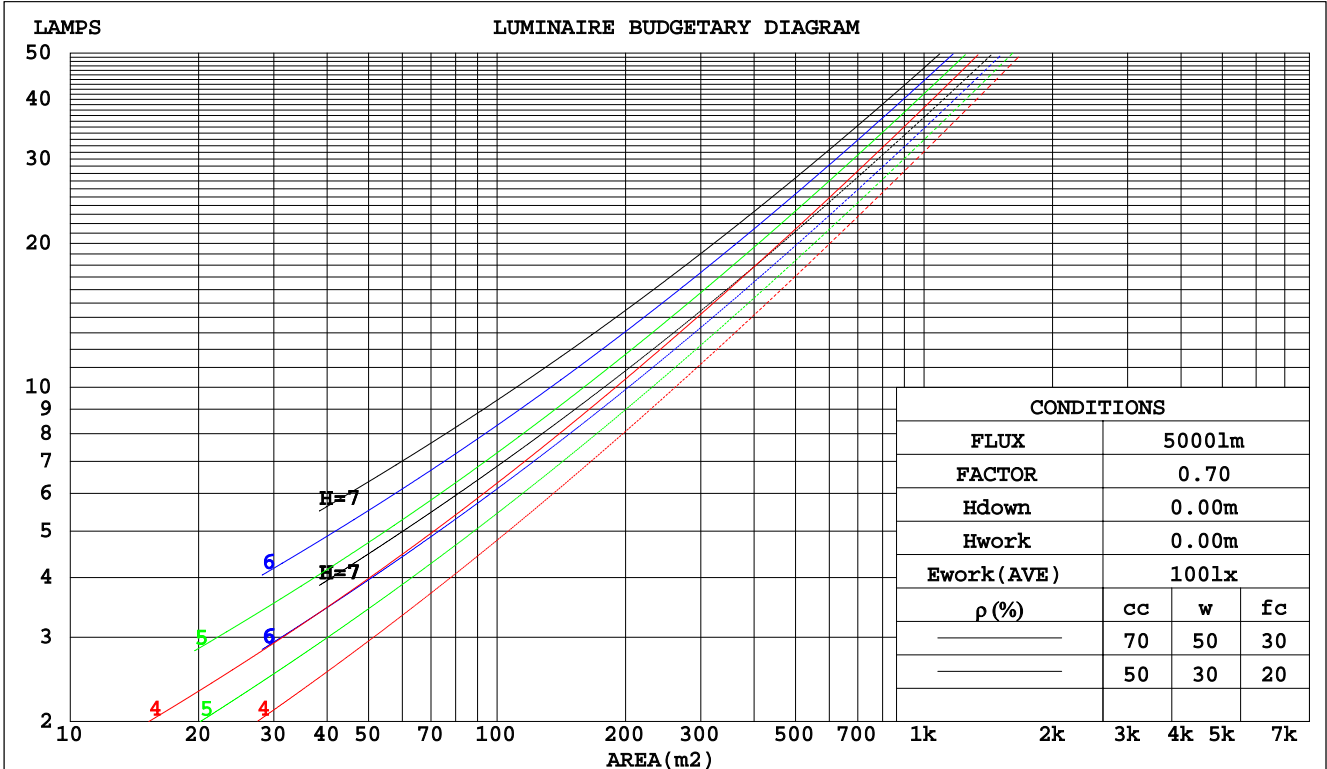
C Range: 0 - 360DEG  
C Interval: 15.0DEG  
Test Speed: HIGH  
Temperature:25.3DEG  
Operators:wxh  
Test Date:2019-05-06

$\gamma$  Range: 0 - 180DEG  
 $\gamma$  Interval: 1.0DEG  
Test System:EVERFINE GO-2000B\_V1 SYSTEM V2.0.291  
Humidity:65.0%  
Test Distance:7.500m [K=1.0000]  
Remarks:

CU AND LUMINAIRE BUDGETARY ESTIMATE DIAGRAM

Test:U:119.9V I:0.2046A P:24.25W PF:0.9881 Lamp Flux:1517.66x1 lm		
NAME: ASD-LVF23-24D25CC-NK	TYPE:	WEIGHT:
SPEC.:	DIM.:	SERIAL No.:
MFR.: ASD Lighting corp.	SUR.:	PROTECTION ANGLE:

pcc	80%			70%			50%			30%			10%			0
	50%	30%	10%	50%	30%	10%	50%	30%	10%	50%	30%	10%	50%	30%	10%	0
pw																0
pfc	20%			20%			20%			20%			20%			0
RCR	RCR:Room Cavity Ratio						Coefficients of Utilization(CU)									
0.0	1.15	1.15	1.15	1.10	1.10	1.10	1.02	1.02	1.02	.94	.94	.94	.86	.86	.86	.83
1.0	.95	.90	.85	.91	.86	.82	.84	.80	.76	.77	.74	.71	.71	.68	.66	.62
2.0	.81	.73	.66	.78	.71	.64	.71	.65	.60	.66	.61	.56	.60	.56	.53	.49
3.0	.70	.61	.54	.67	.59	.52	.62	.55	.49	.57	.51	.46	.52	.47	.43	.40
4.0	.62	.52	.45	.59	.50	.43	.54	.47	.41	.50	.44	.39	.46	.41	.36	.33
5.0	.55	.45	.38	.53	.44	.37	.48	.41	.35	.45	.38	.33	.41	.36	.31	.28
6.0	.49	.39	.33	.47	.38	.32	.43	.36	.30	.40	.34	.29	.37	.31	.27	.25
7.0	.44	.35	.29	.42	.34	.28	.39	.32	.26	.36	.30	.25	.34	.28	.24	.21
8.0	.40	.31	.25	.39	.30	.25	.36	.29	.23	.33	.27	.22	.31	.25	.21	.19
9.0	.37	.28	.22	.35	.27	.22	.33	.26	.21	.31	.24	.20	.28	.23	.19	.17
10.0	.34	.26	.20	.33	.25	.20	.30	.24	.19	.28	.22	.18	.26	.21	.17	.15



C Range: 0 - 360DEG  
 C Interval: 15.0DEG  
 Test Speed: HIGH  
 Temperature: 25.3DEG  
 Operators: wxh  
 Test Date: 2019-05-06

γ Range: 0 - 180DEG  
 γ Interval: 1.0DEG  
 Test System: EVERFINE GO-2000B\_V1 SYSTEM V2.0.291  
 Humidity: 65.0%  
 Test Distance: 7.500m [K=1.0000]  
 Remarks:

WEC AND CCEC

Test:U:119.9V I:0.2046A P:24.25W PF:0.9881 Lamp Flux:1517.66x1 lm		
NAME: ASD-LVF23-24D25CC-NK	TYPE:	WEIGHT:
SPEC.:	DIM.:	SERIAL No.:
MFR.:ASD Lighting corp.	SUR.:	PROTECTION ANGLE:

ρcc	80%			70%			50%			30%			10%			0
ρw	50%	30%	10%	50%	30%	10%	50%	30%	10%	50%	30%	10%	50%	30%	10%	0
ρfc	20%			20%			20%			20%			20%			0
RCR	RCR:Room Cavity Ratio						Wall Exitance Coefficients(WEC)									
0.0																
1.0	.396	.225	.071	.384	.219	.070	.360	.207	.066	.339	.196	.063	.319	.185	.060	
2.0	.341	.187	.057	.329	.181	.056	.308	.171	.053	.289	.162	.051	.271	.153	.048	
3.0	.301	.160	.048	.291	.156	.047	.272	.148	.045	.255	.140	.043	.238	.132	.041	
4.0	.271	.141	.041	.261	.137	.040	.244	.129	.039	.228	.123	.037	.213	.116	.035	
5.0	.245	.125	.036	.237	.122	.035	.221	.115	.034	.207	.109	.032	.193	.103	.031	
6.0	.225	.113	.032	.217	.110	.032	.203	.104	.030	.189	.098	.029	.177	.093	.028	
7.0	.207	.102	.029	.200	.100	.028	.187	.095	.027	.175	.090	.026	.163	.085	.025	
8.0	.192	.094	.026	.185	.091	.026	.173	.087	.025	.162	.082	.024	.152	.078	.023	
9.0	.178	.086	.024	.173	.084	.024	.162	.080	.023	.151	.076	.022	.142	.072	.021	
10.0	.167	.080	.022	.162	.078	.022	.151	.074	.021	.142	.070	.020	.133	.067	.019	

ρcc	80%			70%			50%			30%			10%			0
ρw	50%	30%	10%	50%	30%	10%	50%	30%	10%	50%	30%	10%	50%	30%	10%	0
ρfc	20%			20%			20%			20%			20%			0
RCR	RCR:Room Cavity Ratio						Ceiling Cavity Exitance Coefficients(CCEC)									
0.0	.320	.320	.320	.273	.273	.273	.187	.187	.187	.107	.107	.107	.034	.034	.034	
1.0	.317	.286	.258	.271	.245	.222	.185	.169	.154	.107	.098	.089	.034	.031	.029	
2.0	.310	.263	.223	.266	.226	.193	.182	.157	.135	.105	.091	.079	.034	.029	.026	
3.0	.303	.247	.202	.259	.213	.175	.178	.148	.123	.103	.086	.072	.033	.028	.024	
4.0	.295	.234	.188	.253	.202	.163	.174	.141	.115	.101	.083	.068	.032	.027	.022	
5.0	.287	.224	.178	.246	.194	.155	.170	.136	.109	.098	.080	.065	.032	.026	.021	
6.0	.279	.216	.171	.240	.187	.149	.166	.131	.105	.096	.077	.063	.031	.025	.021	
7.0	.272	.210	.166	.234	.182	.145	.162	.127	.102	.094	.075	.061	.030	.025	.020	
8.0	.265	.204	.162	.229	.177	.141	.158	.124	.100	.092	.073	.060	.030	.024	.020	
9.0	.259	.199	.159	.223	.173	.139	.155	.122	.098	.090	.072	.059	.029	.024	.019	
10.0	.253	.195	.157	.218	.169	.137	.151	.119	.097	.088	.071	.058	.029	.023	.019	

C Range: 0 - 360DEG  
 C Interval: 15.0DEG  
 Test Speed: HIGH  
 Temperature:25.3DEG  
 Operators:wxh  
 Test Date:2019-05-06

γ Range: 0 - 180DEG  
 γ Interval: 1.0DEG  
 Test System:EVERFINE GO-2000B\_V1 SYSTEM V2.0.291  
 Humidity:65.0%  
 Test Distance:7.500m [K=1.0000]  
 Remarks:

UGR(Unified Glare Rating) Table

Test:U:119.9V I:0.2046A P:24.25W PF:0.9881 Lamp Flux:1517.66x1 lm										
NAME: ASD-LVF23-24D25CC-NK					TYPE:			WEIGHT:		
SPEC.:					DIM.:			SERIAL No.:		
MFR.: ASD Lighting corp.					SUR.:			PROTECTION ANGLE:		
ceiling/cavity	0.7	0.7	0.5	0.5	0.3	0.7	0.7	0.5	0.5	0.3
walls	0.5	0.3	0.5	0.3	0.3	0.5	0.3	0.5	0.3	0.3
working plane	0.2	0.2	0.2	0.2	0.2	0.2	0.2	0.2	0.2	0.2
Room dimensions	Viewed crosswise					Viewed endwise				
x = 2H y = 2H	15.0	16.4	15.5	16.9	17.5	17.6	19.0	18.1	19.5	20.0
3H	16.5	17.8	17.0	18.3	18.9	20.3	21.6	20.9	22.2	22.8
4H	17.0	18.2	17.6	18.8	19.4	21.9	23.1	22.4	23.7	24.3
6H	17.4	18.6	18.0	19.1	19.8	23.6	24.8	24.2	25.3	26.0
8H	17.5	18.6	18.1	19.2	19.8	24.5	25.7	25.1	26.2	26.9
12H	17.5	18.6	18.1	19.2	19.9	25.6	26.7	26.2	27.3	28.0
4H 2H	16.3	17.5	16.9	18.1	18.7	18.1	19.4	18.7	19.9	20.5
3H	18.1	19.2	18.7	19.7	20.4	21.1	22.2	21.7	22.8	23.5
4H	18.9	19.8	19.5	20.5	21.1	22.9	23.9	23.5	24.5	25.2
6H	19.4	20.3	20.1	21.0	21.7	24.8	25.7	25.5	26.4	27.1
8H	19.6	20.5	20.3	21.1	21.9	25.9	26.8	26.6	27.4	28.1
12H	19.8	20.5	20.4	21.2	22.0	27.1	27.9	27.8	28.6	29.3
8H 4H	20.1	20.9	20.8	21.6	22.3	23.2	24.1	23.9	24.7	25.5
6H	21.1	21.9	21.8	22.5	23.3	25.5	26.2	26.2	26.9	27.7
8H	21.6	22.2	22.3	22.9	23.7	26.8	27.4	27.5	28.1	28.9
12H	21.9	22.5	22.6	23.2	24.0	28.3	28.9	29.0	29.6	30.4
12H 4H	20.5	21.3	21.2	22.0	22.7	23.3	24.0	23.9	24.7	25.5
6H	21.8	22.5	22.5	23.2	24.0	25.6	26.2	26.3	26.9	27.7
8H	22.5	23.0	23.2	23.7	24.6	27.0	27.6	27.7	28.3	29.1
Variations with the observer position at spacings:										
S = 1.0H	+ 0.1 / - 0.1					+ 0.1 / - 0.1				
1.5H	+ 0.2 / - 0.3					+ 0.2 / - 0.3				
2.0H	+ 0.2 / - 0.4					+ 0.3 / - 0.4				

CIE Pub.117 Corrected 1518 lm Total Lamp Luminous Flux.(8log(F/F0) = 1.4)

C Range: 0 - 360DEG  
 C Interval: 15.0DEG  
 Test Speed: HIGH  
 Temperature:25.3DEG  
 Operators:wxh  
 Test Date:2019-05-06

γ Range: 0 - 180DEG  
 γ Interval: 1.0DEG  
 Test System:EVERFINE GO-2000B\_V1 SYSTEM V2.0.291  
 Humidity:65.0%  
 Test Distance:7.500m [K=1.0000]  
 Remarks:

## UTILIZATION FACTORS TABLE

Test:U:119.9V I:0.2046A P:24.25W PF:0.9881 Lamp Flux:1517.66x1 lm		
NAME: ASD-LVF23-24D25CC-NK	TYPE:	WEIGHT:
SPEC.:	DIM.:	SERIAL No.:
MFR.:ASD Lighting corp.	SUR.:	PROTECTION ANGLE:

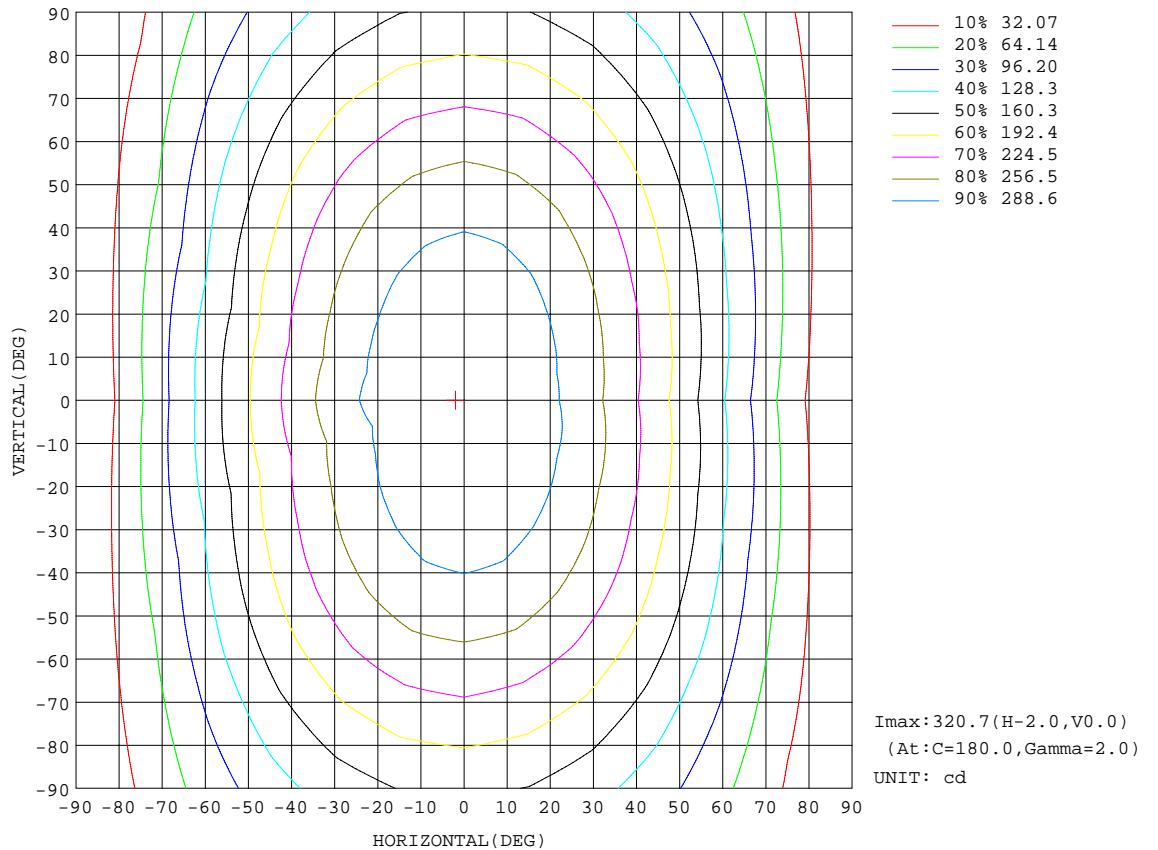
REFLECTANCE										
Ceiling	0.8	0.8	0.8	0.7	0.7	0.7	0.5	0.5	0.5	0
Walls	0.7	0.5	0.3	0.7	0.5	0.3	0.7	0.5	0.3	0
Working plane	0.2	0.2	0.2	0.2	0.2	0.2	0.2	0.2	0.2	0
ROOM INDEX	UTILIZATION FACTORS(PERCENT) $k(RI) \times RCR = 5$									
k = 0.60	47	35	27	46	34	27	44	34	27	20
0.80	56	43	35	55	43	35	52	41	34	26
1.00	64	51	42	62	50	42	59	51	41	32
1.25	71	58	49	69	57	49	65	55	47	38
1.50	76	64	55	74	62	54	69	59	52	42
2.00	83	72	64	81	70	62	75	66	60	48
2.50	88	77	69	85	75	68	79	71	65	52
3.00	92	82	74	88	80	73	82	75	69	56
4.00	97	88	82	93	85	79	86	80	75	61
5.00	100	92	86	96	89	84	88	83	79	64
ROOM INDEX	UF(total)									Direct
According to DIN EN 13032-2 2004			Suspended				SHRNOM = 1.25			

C Range: 0 - 360DEG  
 C Interval: 15.0DEG  
 Test Speed: HIGH  
 Temperature:25.3DEG  
 Operators:wxh  
 Test Date:2019-05-06

$\gamma$  Range: 0 - 180DEG  
 $\gamma$  Interval: 1.0DEG  
 Test System:EVERFINE GO-2000B\_V1 SYSTEM V2.0.291  
 Humidity:65.0%  
 Test Distance:7.500m [K=1.0000]  
 Remarks:

ISOCANDELA DIAGRAM

Test:U:119.9V I:0.2046A P:24.25W PF:0.9881 Lamp Flux:1517.66x1 lm		
NAME: ASD-LVF23-24D25CC-NK	TYPE:	WEIGHT:
SPEC.:	DIM.:	SERIAL No.:
MFR.: ASD Lighting corp.	SUR.:	PROTECTION ANGLE:

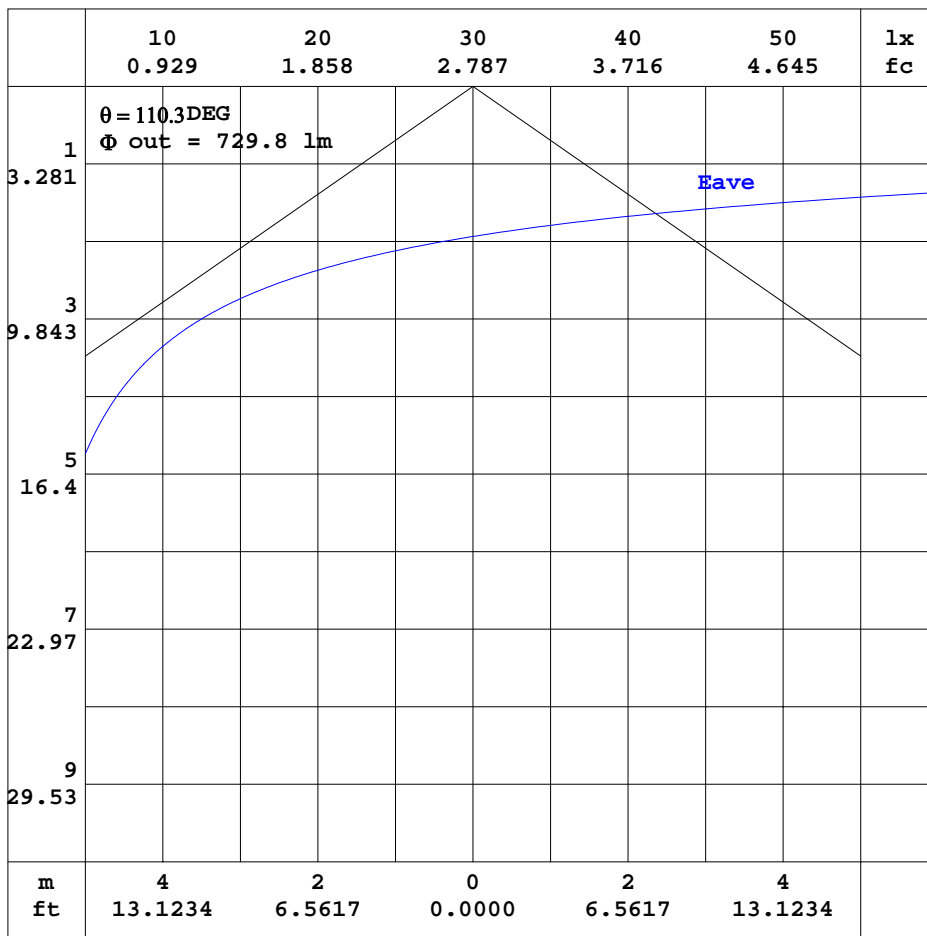


C Range: 0 - 360DEG  
 C Interval: 15.0DEG  
 Test Speed: HIGH  
 Temperature: 25.3DEG  
 Operators: wxh  
 Test Date: 2019-05-06

γ Range: 0 - 180DEG  
 γ Interval: 1.0DEG  
 Test System: EVERFINE GO-2000B\_V1 SYSTEM V2.0.291  
 Humidity: 65.0%  
 Test Distance: 7.500m [K=1.0000]  
 Remarks:

AAI CURVES

Test:U:119.9V I:0.2046A P:24.25W PF:0.9881 Lamp Flux:1517.66x1 lm		
NAME: ASD-LVF23-24D25CC-NK	TYPE:	WEIGHT:
SPEC.:	DIM.:	SERIAL No.:
MFR.: ASD Lighting corp.	SUR.:	PROTECTION ANGLE:



Note: The Curves indicate the illuminated area and the average illumination when the luminaire is at different distance.

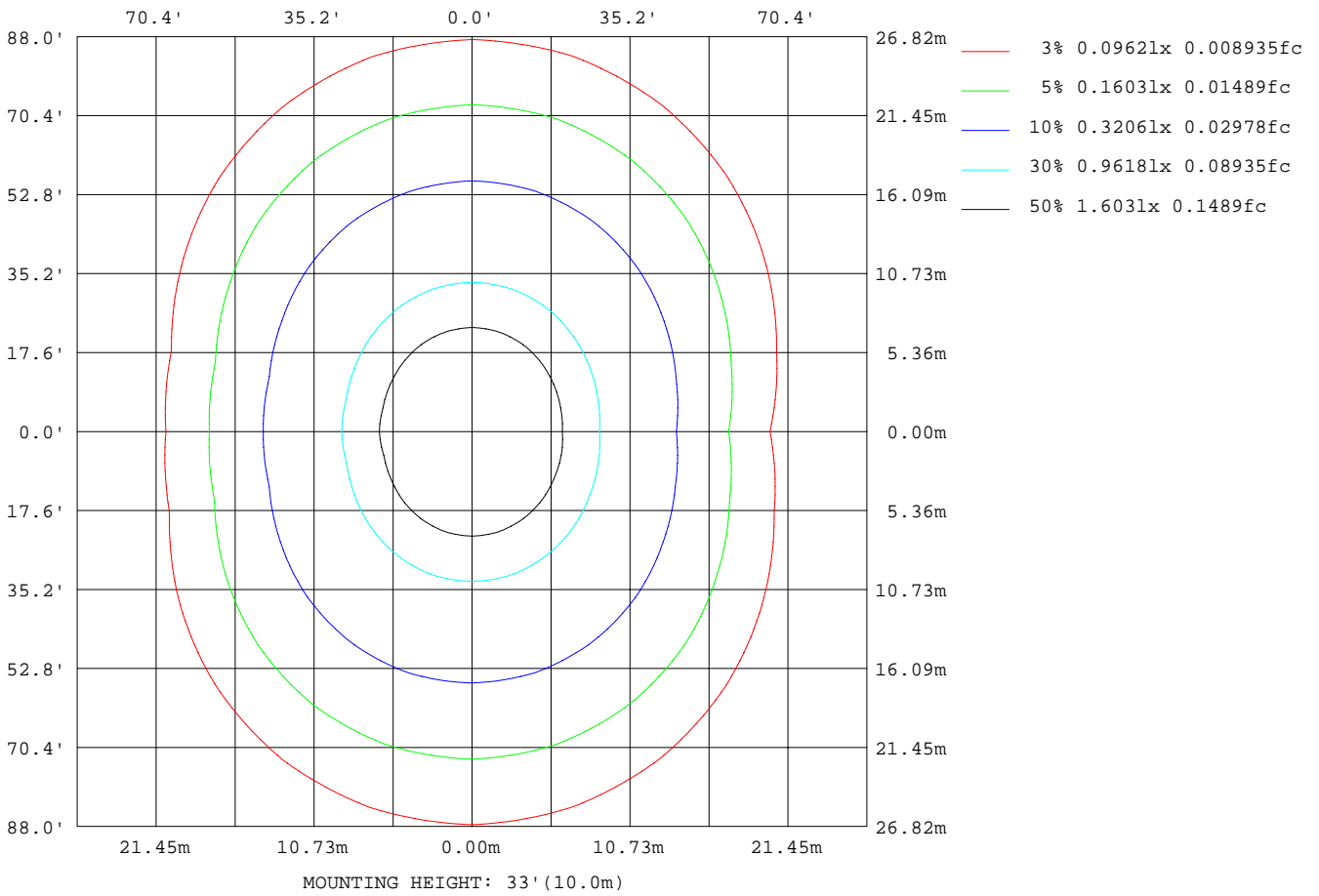
C Range: 0 - 360DEG  
 C Interval: 15.0DEG  
 Test Speed: HIGH  
 Temperature: 25.3DEG  
 Operators: wxh  
 Test Date: 2019-05-06

$\gamma$  Range: 0 - 180DEG  
 $\gamma$  Interval: 1.0DEG  
 Test System: EVERFINE GO-2000B\_V1 SYSTEM V2.0.291  
 Humidity: 65.0%  
 Test Distance: 7.500m [K=1.0000]  
 Remarks:



ISOLUX DIAGRAM

Test:U:119.9V I:0.2046A P:24.25W PF:0.9881 Lamp Flux:1517.66x1 lm		
NAME: ASD-LVF23-24D25CC-NK	TYPE:	WEIGHT:
SPEC.:	DIM.:	SERIAL No.:
MFR.: ASD Lighting corp.	SUR.:	PROTECTION ANGLE:



C Range: 0 - 360DEG  
 C Interval: 15.0DEG  
 Test Speed: HIGH  
 Temperature: 25.3DEG  
 Operators: wxh  
 Test Date: 2019-05-06

γ Range: 0 - 180DEG  
 γ Interval: 1.0DEG  
 Test System: EVERFINE GO-2000B\_V1 SYSTEM V2.0.291  
 Humidity: 65.0%  
 Test Distance: 7.500m [K=1.0000]  
 Remarks:

## LED Avg.L Report

Test:U:119.9V I:0.2046A P:24.25W PF:0.9881 Lamp Flux:1517.66x1 lm		
NAME: ASD-LVF23-24D25CC-NK	TYPE:	WEIGHT:
SPEC.:	DIM.:	SERIAL No.:
MFR.:ASD Lighting corp.	SUR.:	PROTECTION ANGLE:

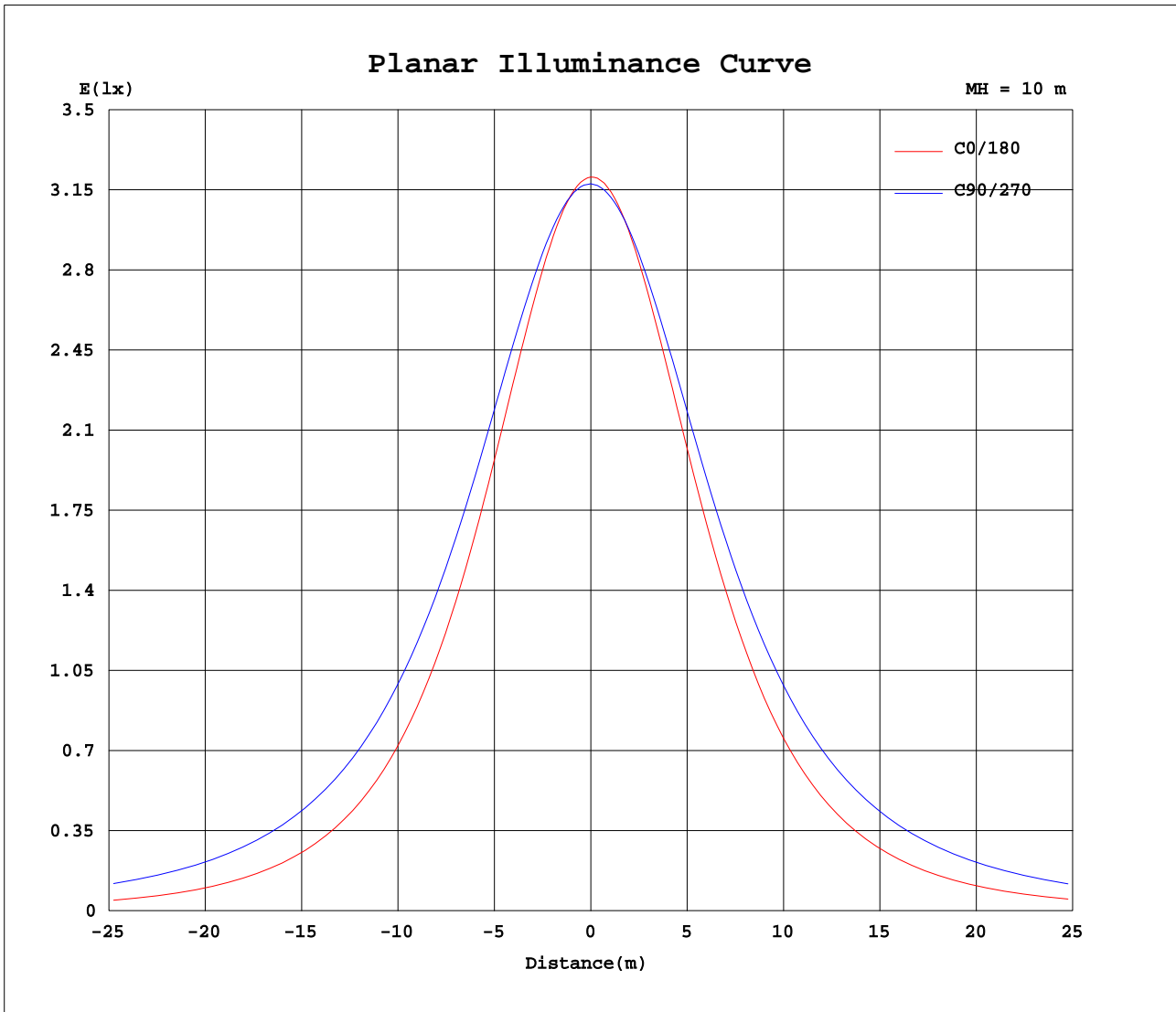
AvgL	cd/m2
L_0~180(65)av	2580
L_0~180(75)av	2180
L_0~180(85)av	1554
L_90~270(65)av	5535
L_90~270(75)av	8002
L_90~270(85)av	20673
L_45(65)av	4397
L_45(75)av	5951
L_45(85)av	14346

Standard: GB/T 29293-2012

C Range: 0 - 360DEG  
C Interval: 15.0DEG  
Test Speed: HIGH  
Temperature:25.3DEG  
Operators:wxh  
Test Date:2019-05-06

$\gamma$  Range: 0 - 180DEG  
 $\gamma$  Interval: 1.0DEG  
Test System:EVERFINE GO-2000B\_V1 SYSTEM V2.0.291  
Humidity:65.0%  
Test Distance:7.500m [K=1.0000]  
Remarks:

Planar Illuminance Curve



C Range: 0 - 360DEG  
 C Interval: 15.0DEG  
 Test Speed: HIGH  
 Temperature: 25.3DEG  
 Operators: wxh  
 Test Date: 2019-05-06

$\gamma$  Range: 0 - 180DEG  
 $\gamma$  Interval: 1.0DEG  
 Test System: EVERFINE GO-2000B\_V1 SYSTEM V2.0.291  
 Humidity: 65.0%  
 Test Distance: 7.500m [K=1.0000]  
 Remarks:

LUMINOUS DISTRIBUTION INTENSITY DATA

Test:U:119.9V I:0.2046A P:24.25W PF:0.9881 Lamp Flux:1517.66x1 lm		
NAME: ASD-LVF23-24D25CC-NK	TYPE:	WEIGHT:
SPEC.:	DIM.:	SERIAL No.:
MFR.: ASD Lighting corp.	SUR.:	PROTECTION ANGLE:

Table--1

UNIT: cd

C( DEG) γ (DEG)	0	15	30	45	60	75	90	105	120	135	150	165	180	195	210	225	240	255	270
0	321	320	319	319	318	318	318	317	317	316	316	316	321	320	319	319	318	318	318
5	318	318	318	318	318	318	317	317	316	316	315	314	320	318	318	318	318	317	317
10	313	314	314	315	316	316	316	316	314	313	311	310	316	314	314	315	316	316	316
15	305	307	308	311	312	314	314	313	311	308	305	303	309	307	308	310	312	313	314
20	294	297	300	304	308	311	311	310	306	302	297	293	299	297	300	303	307	309	310
25	280	285	289	296	301	306	307	306	301	294	286	281	287	284	289	294	301	305	306
30	264	270	276	286	294	301	302	300	294	284	274	267	272	270	276	284	293	299	301
35	246	254	262	275	285	294	296	293	285	274	260	250	255	253	262	273	284	292	295
40	226	235	246	262	276	286	289	286	276	262	245	232	235	234	246	260	274	283	287
45	204	214	229	248	264	276	280	277	265	248	229	212	213	213	228	246	263	274	278
50	181	193	211	234	252	266	270	267	254	235	211	191	190	191	209	231	251	263	268
55	156	170	192	218	239	254	259	255	241	219	193	169	166	169	191	215	237	252	257
60	130	147	173	202	225	242	247	243	227	204	175	146	141	145	171	200	223	239	246
65	104	123	154	185	211	228	235	230	213	188	157	124	114	121	152	183	209	226	233
70	77.1	100	135	169	196	214	221	216	199	172	138	102	87.6	97.8	133	167	194	213	219
75	51.5	78.0	116	153	181	200	208	202	184	156	120	81.0	61.3	75.8	115	152	180	200	206
80	28.4	58.2	99.0	137	167	187	194	189	171	141	104	62.0	36.7	56.3	98.7	137	167	186	193
85	10.7	41.1	83.6	123	153	173	181	175	157	128	89.1	46.0	16.4	40.0	83.7	123	153	173	180
90	4.02	29.0	70.9	110	140	159	167	161	144	115	76.8	34.6	5.43	28.8	71.4	110	140	159	166
95	3.92	21.7	60.5	97.8	127	146	154	148	131	103	66.4	27.0	4.35	22.2	61.5	98.2	128	147	154
100	4.14	14.3	46.2	86.2	114	133	141	136	118	91.1	50.9	18.5	4.43	15.4	47.5	87.3	116	134	141
105	4.42	10.5	25.0	62.7	97.0	117	125	119	101	66.9	29.8	14.6	4.70	11.6	28.3	61.8	98.7	118	126
110	4.72	7.65	28.3	28.8	56.1	85.4	94.9	87.6	60.8	33.0	33.7	11.5	5.06	9.54	30.7	32.7	57.6	84.6	96.7
115	5.18	6.67	21.3	39.5	31.5	38.7	47.3	41.2	34.2	42.1	25.6	9.25	5.45	8.65	22.4	45.1	35.0	40.5	49.5
120	5.64	6.61	16.7	36.7	46.8	40.7	42.4	41.2	48.2	40.8	21.4	8.55	5.89	8.25	17.5	39.2	52.2	46.3	44.7
125	5.73	6.28	13.0	29.3	42.4	55.8	62.4	56.7	45.5	33.0	17.1	8.05	6.07	7.82	14.9	29.5	46.2	59.2	64.8
130	6.38	6.24	10.6	22.7	33.1	43.2	50.1	44.8	36.2	26.7	13.7	7.80	6.46	7.55	12.9	22.8	33.9	45.3	52.6
135	6.50	6.41	8.62	17.0	25.5	33.7	39.3	35.8	29.0	20.6	10.5	7.58	6.92	7.64	11.1	17.9	25.5	32.6	38.2
140	6.86	6.39	7.98	12.2	18.0	24.9	29.8	27.3	21.7	15.3	9.81	7.53	7.03	7.58	9.90	13.7	19.9	24.3	28.6
145	7.12	7.01	7.60	9.52	13.6	17.6	21.4	19.4	15.6	11.0	9.26	7.74	7.39	7.98	9.07	11.7	15.7	18.8	22.3
150	7.16	7.20	7.28	8.55	10.5	14.1	16.0	14.4	11.8	10.1	8.59	7.94	7.51	7.60	8.42	10.2	12.2	15.4	17.0
155	7.21	6.86	7.85	7.95	9.76	12.0	13.9	12.7	10.7	9.28	8.14	7.91	7.60	7.02	8.36	9.11	11.1	13.0	14.5
160	7.11	6.57	7.27	7.90	9.29	10.9	12.2	11.5	9.93	8.46	8.09	7.61	7.49	6.96	7.61	8.33	9.34	11.7	12.4
165	6.91	6.78	7.30	8.10	8.77	9.73	10.5	10.2	8.22	7.98	7.59	7.34	7.32	6.99	7.29	7.73	8.34	10.3	10.9
170	7.51	7.40	7.59	8.29	8.67	9.09	9.34	7.87	7.59	7.38	7.40	7.64	7.58	7.54	7.30	7.32	7.68	8.15	9.87
175	8.57	8.54	8.40	8.64	8.77	8.68	8.51	7.45	7.54	8.22	8.35	8.36	8.43	8.22	8.24	8.16	7.38	7.34	7.21
180	9.28	9.30	9.36	9.32	9.21	8.25	7.68	8.50	9.40	9.31	9.30	9.19	9.30	9.28	9.38	9.31	9.22	8.24	7.69

C Range: 0 - 360DEG  
 C Interval: 15.0DEG  
 Test Speed: HIGH  
 Temperature: 25.3DEG  
 Operators: wxh  
 Test Date: 2019-05-06

γ Range: 0 - 180DEG  
 γ Interval: 1.0DEG  
 Test System: EVERFINE GO-2000B\_V1 SYSTEM V2.0.291  
 Humidity: 65.0%  
 Test Distance: 7.500m [K=1.0000]  
 Remarks:

LUMINOUS DISTRIBUTION INTENSITY DATA

Test:U:119.9V I:0.2046A P:24.25W PF:0.9881 Lamp Flux:1517.66x1 lm		
NAME: ASD-LVF23-24D25CC-NK	TYPE:	WEIGHT:
SPEC.:	DIM.:	SERIAL No.:
MFR.:ASD Lighting corp.	SUR.:	PROTECTION ANGLE:

Table--2

UNIT: cd

C(DEG) γ (DEG)	285	300	315	330	345														
0	317	317	316	316	316														
5	317	316	315	315	314														
10	315	314	313	312	310														
15	313	311	308	306	303														
20	309	306	302	298	294														
25	305	300	294	287	282														
30	299	293	284	275	268														
35	292	284	273	262	252														
40	284	275	261	246	234														
45	274	264	248	230	214														
50	264	252	233	212	193														
55	253	240	219	194	171														
60	240	225	203	176	149														
65	228	211	187	157	127														
70	214	197	171	139	104														
75	201	183	156	121	83.1														
80	187	169	141	105	64.1														
85	174	156	127	90.0	47.7														
90	161	143	114	77.5	35.7														
95	148	130	102	66.9	28.1														
100	135	118	90.6	53.8	19.1														
105	120	103	68.5	29.0	14.1														
110	88.2	64.8	31.9	33.9	10.6														
115	42.7	32.8	41.0	25.9	8.75														
120	43.6	47.8	41.2	19.5	8.12														
125	58.3	46.9	31.1	16.1	7.68														
130	45.7	35.2	24.1	13.1	7.53														
135	33.5	26.9	19.6	9.81	7.54														
140	25.7	21.4	13.8	9.09	7.81														
145	20.1	15.9	10.2	8.54	8.19														
150	15.1	11.6	9.29	8.16	8.67														
155	12.6	10.1	8.56	8.60	8.35														
160	11.2	9.73	8.67	8.31	7.55														
165	10.3	9.40	8.59	7.76	7.18														
170	9.64	8.94	8.15	7.63	7.44														
175	8.66	8.62	8.47	8.21	8.31														
180	8.48	9.39	9.31	9.30	9.19														

C Range: 0 - 360DEG  
 C Interval: 15.0DEG  
 Test Speed: HIGH  
 Temperature:25.3DEG  
 Operators:wjh  
 Test Date:2019-05-06

γ Range: 0 - 180DEG  
 γ Interval: 1.0DEG  
 Test System:EVERFINE GO-2000B\_V1 SYSTEM V2.0.291  
 Humidity:65.0%  
 Test Distance:7.500m [K=1.0000]  
 Remarks: