

ASD[®] LED STEP LIGHT

- ▶ **DESIGN** - LED STEP LIGHT has a sleek, low-profile design with no visible hardware, allowing it to seamlessly blend into any setting. Durable waterproof housing resistant to rust and can be used outdoor for all weather conditions. It is designed to operate on 120V circuits
- ▶ **COLOR SELECTABLE** - You can choose either a 3,000K warm white, 4,000K cool white or 5,000K daylight color temperature.
- ▶ **PHOTOCELL** - The built-in Dusk to Dawn Photocell will automatically turn the fixture on/off depending on the time of day.
- ▶ **MOTION SENSOR** - The built-in motion sensor will turn off the fixture automatically when no motion is detected.
- ▶ **PHOTOCELL AND MOTION SENSOR** - When motion is detected the built-in motion sensor turns on the fixture. During the daytime the preinstalled PC deactivates the motion sensor.
- ▶ **APPLICATION** - This fixture is rated for Wet Locations, making it perfect for outdoor projects such as pathways, corridors, walkways, building perimeters or anywhere else landscape lighting is required.
- ▶ **ADVANTAGES** - With a lifespan of 50,000 hours, these fixtures are made to last decades under normal operation! ASD provides a 5-year limited warranty along with ETL certification to guarantee top quality products and safety!



Finish: White Bronze Black

Model	Watts	Voltage	Dimmable	Lumens	CCT	Finish	Dimensions (LxWxH)	Option
ASD-LSTL-H01W-D3CC-WH	3W	120 V	TRIAC	up to 114 lm	3CCT (3,000/4,000/5,000 K)	White	4-3/4" x 1-9/16" x 2-13/16"	-
ASD-LSTL-H01W-D3CC-WH-4PACK	3W	120 V	TRIAC	up to 114 lm	3CCT (3,000/4,000/5,000 K)	White	4-3/4" x 1-9/16" x 2-13/16"	-
ASD-LSTL-H01W-D3CC-BZ	3W	120 V	TRIAC	up to 114 lm	3CCT (3,000/4,000/5,000 K)	Oil rubbed bronze	4-3/4" x 1-9/16" x 2-13/16"	-
ASD-LSTL-H01W-D3CC-BZ-4PACK	3W	120 V	TRIAC	up to 114 lm	3CCT (3,000/4,000/5,000 K)	Oil rubbed bronze	4-3/4" x 1-9/16" x 2-13/16"	-
ASD-LSTL-H01W-D3CC-BK	3W	120 V	TRIAC	up to 114 lm	3CCT (3,000/4,000/5,000 K)	Black	4-3/4" x 1-9/16" x 2-13/16"	-
ASD-LSTL-H01W-D3CC-BK-4PACK	3W	120 V	TRIAC	up to 114 lm	3CCT (3,000/4,000/5,000 K)	Black	4-3/4" x 1-9/16" x 2-13/16"	-
LSTL-MS WITH MOTION SENSOR								
ASD-LSTL-H01W-N3CC-MS-WH	3W	120 V	-	up to 114 lm	3CCT (3,000/4,000/5,000 K)	White	4-3/4" x 1-3/4" x 2-13/16"	Motion sensor
ASD-LSTL-H01W-N3CC-MS-BZ	3W	120 V	-	up to 114 lm	3CCT (3,000/4,000/5,000 K)	Oil rubbed bronze	4-3/4" x 1-3/4" x 2-13/16"	Motion sensor
ASD-LSTL-H01W-N3CC-MS-BK	3W	120 V	-	up to 114 lm	3CCT (3,000/4,000/5,000 K)	Black	4-3/4" x 1-3/4" x 2-13/16"	Motion sensor
LSTL-PC WITH PHOTOCELL								
ASD-LSTL-H01W-N3CC-PC-WH	3W	120 V	-	up to 114 lm	3CCT (3,000/4,000/5,000 K)	White	4-3/4" x 1-9/16" x 2-13/16"	Photocell
ASD-LSTL-H01W-N3CC-PC-BZ	3W	120 V	-	up to 114 lm	3CCT (3,000/4,000/5,000 K)	Oil rubbed bronze	4-3/4" x 1-9/16" x 2-13/16"	Photocell
ASD-LSTL-H01W-N3CC-PC-BK	3W	120 V	-	up to 114 lm	3CCT (3,000/4,000/5,000 K)	Black	4-3/4" x 1-9/16" x 2-13/16"	Photocell
LSTL-PC-MS WITH MOTION SENSOR AND PHOTOCELL								
ASD-LSTL-H01W-N3CC-PC-MS-WH	3W	120 V	-	up to 114 lm	3CCT (3,000/4,000/5,000 K)	White	4-3/4" x 1-3/4" x 2-13/16"	Motion sensor, Photocell
ASD-LSTL-H01W-N3CC-PC-MS-BZ	3W	120 V	-	up to 114 lm	3CCT (3,000/4,000/5,000 K)	Oil rubbed bronze	4-3/4" x 1-3/4" x 2-13/16"	Motion sensor, Photocell
ASD-LSTL-H01W-N3CC-PC-MS-BK	3W	120 V	-	up to 114 lm	3CCT (3,000/4,000/5,000 K)	Black	4-3/4" x 1-3/4" x 2-13/16"	Motion sensor, Photocell

For detailed luminous flux information please refer to Annex 1.

ANNEX 1

Model	Watts	3,000 K	4,000 K	5,000 K
All models	3W	98 lm	103 lm	114 lm

For most up-to-date spec sheets please refer to asd-lighting.com



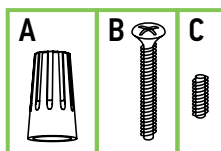
LED STEP LIGHT

PRODUCT SPECIFICATIONS:

Construction & Materials		
Housing	Aluminum	
Lens	Acrylic	
Finish	White, Oil rubbed bronze, Black	
Weight	ASD-LSTL-H01W-D3CC-WH	0.3 lbs (0.1 kg)
	ASD-LSTL-H01W-D3CC-WH-4PACK	1.3 lbs (0.6 kg)
	ASD-LSTL-H01W-D3CC-BZ	0.3 lbs (0.1 kg)
	ASD-LSTL-H01W-D3CC-BZ-4PACK	1.3 lbs (0.6 kg)
	ASD-LSTL-H01W-D3CC-BK	0.3 lbs (0.1 kg)
	ASD-LSTL-H01W-D3CC-BK-4PACK	1.3 lbs (0.6 kg)
	ASD-LSTL-H01W-N3CC-MS-WH	0.3 lbs (0.1 kg)
	ASD-LSTL-H01W-N3CC-MS-BZ	
	ASD-LSTL-H01W-N3CC-MS-BK	
	ASD-LSTL-H01W-N3CC-PC-WH	
	ASD-LSTL-H01W-N3CC-PC-BZ	
	ASD-LSTL-H01W-N3CC-PC-BK	
	ASD-LSTL-H01W-N3CC-PC-MS-WH	
ASD-LSTL-H01W-N3CC-PC-MS-BZ		
ASD-LSTL-H01W-N3CC-PC-MS-BK		
Environmental system		
Work environment	Suitable for Wet Locations	
Operating temperature	for LSTL-D3CC models: -40°F to 113°F (-40°C to 45°C)	
	for LSTL-N3CC models: -4°F to 113°F (-20°C to 45°C)	
L-70 Life	> 50,000 hrs	
Optical system		
Color temperature	3CCT switch (3,000/4,000/5,000 K), 3,000 K by default	
CRI	> 80	
Electrical system		
Input voltage	120 V	
Max input current	0.63 A	
Inrush current (Action time)	0.02 A (0.02 S)	
Off state power	0W	
Power consumption	3W	
Power factor	> 0.9	
Output voltage	12-20 V	
Max output current	0.14 A	
Surge protection DM/CM	1.25 kV / 1.25 kV	
Dimming range		
10-100%		
Dimming compatible controls		
Brand	Lutron Leviton	
Models	MACL-153MLH-WH DVCL-153PR R02-DW6HD-2RW DSL06	
	STCL-153PH-WH P-PKG1W R00-RNL06-0TW	
	PD-6WCL-WH-R R68-06674-P0T	
Regular and voluntary certifications		
5-year limited warranty		
cETLus certified 4001256		

PACKAGE CONTENTS:

Description	Q-ty
LED Step Light	1 (4 for 4pack)
Wire nut (A)	3
Screw (B)	2
Hexagon screw (C)	1
Box	1



BUILT-IN MOTION SENSOR INFORMATION

Specifications	Model: D203S
Operating voltage	3-15 V
Hold time	30 S
Operating temperature	-86°F to 158°F (-30°C to 70°C)

- The light is ON for 30 seconds after a motion is detected
 - Max. detection range 13 ft (4m).
- The PIR motion sensor automatically turn off in the absence of motion.

BUILT-IN PHOTOCELL INFORMATION

Specifications	Model: PT3A4.B
Operating voltage	30 V
Hold time	30 S
Operating temperature	-86°F to 185°F (-30°C to 85°C)

- The light is always ON when luminance is <90 lux (2.8 fc) (night time)
 - The light is always OFF when luminance is > 90 lux (5.6 fc) (day time)
- The dusk-to-dawn sensor automatically turns the fixture off during daylight hours.

BUILT-IN MOTION SENSOR AND PHOTOCELL INFORMATION

Specifications	Model: D203S	Model: PT3A4.B
Operating voltage	3-15 V	30 V
Hold time	30 S	30 S
Operating temperature	-86°F to 158°F (-30°C to 70°C)	-86°F to 185°F (-30°C to 85°C)

- The light is always ON when luminance is <90 lux (2.8 fc) (night time) and remains on for 30 seconds after a motion is detected.
- The light is always OFF when luminance is > 90 lux (5.6 fc) (day time)
- Max. detection range 26 ft (8m).

The fixtures with a motion sensor and a built-in Dusk-to-Dawn sensor automatically turn off the motion sensor during daylight hours regardless of motion detection.

For most up-to-date spec sheets please refer to asd-lighting.com



LED STEP LIGHT

INSTALLATION GUIDE

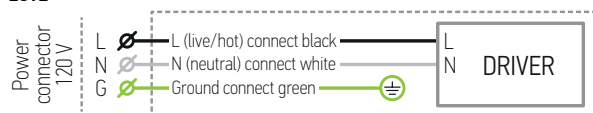
IMPORTANT SAFETY INFORMATION:

Please read all the instructions below before installation.

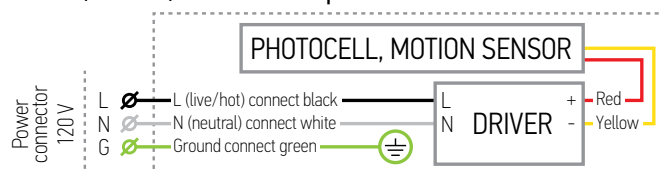
- ▶ Make sure that the supply voltage corresponds to the rated product voltage.
- ▶ The product must be installed by a qualified electrician in accordance with the National Electrical Code and corresponding local codes.
- ▶ If the product is damaged, do not use it.

ELECTRICAL SCHEMATIC DIAGRAM:

LSTL



LSTL-MS / LSTL-PC / LSTL-PC-MS with photocell and motion sensor



⚠ WARNING

RISK OF PERSONAL INJURY – READ and follow all WARNINGS and installation instructions. Keep or give to the owner for future reference.

Risk of cuts: Wear gloves to prevent cuts or abrasions when removing from carton, handling, installing, and maintaining this product.

Risk of electric shock: This product must be installed in accordance with the applicable installation code by a person familiar with the construction and operation of the product and the hazards involved.

Risk of Fire: Minimum 194°F supply conductors. Consult a qualified electrician to ensure correct branch circuit conductor.

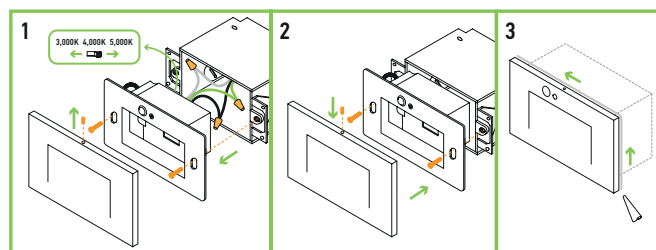
ASD® assumes no responsibility for claims arising out of improper or careless Installation or handling of this product.

INSTALLATION STEPS:

1. Use a screwdriver to loosen the screws securing the front cover and to disassemble the face plate. Choose either 3,000K, 4,000K, or 5,000K with a simple switch. Pull the supply wires out from the outlet box. Connect the wires: Black to Black, White to White, Green to Green. Secure the connection with wire nuts. Tuck all the wires back inside the outlet box.

2. Attach the mounting bracket to the outlet box using screws. Place the face plate on the mounting bracket and affix with the hexagon screw.

3. For outdoor locations please use silicone (not included) as shown in the picture below.



ORDERING INFORMATION

Model	UPC	Pcs. per carton	Carton size	Carton weight	GTIN 14
ASD-LSTL-H01W-D3CC-WH	810050736381	12	12" x 6.1" x 8.9"	5.8 lbs	30810050736382
ASD-LSTL-H01W-D3CC-WH-4PACK	810050737715	3	10.6" x 7.7" x 6.9"	4.5 lbs	10810050737712
ASD-LSTL-H01W-D3CC-BZ	810050736374	12	12" x 6.1" x 8.9"	5.8 lbs	30810050736375
ASD-LSTL-H01W-D3CC-BZ-4PACK	810050737708	3	10.6" x 7.7" x 6.9"	4.5 lbs	10810050737705
ASD-LSTL-H01W-D3CC-BK	810050737685	12	12" x 6.1" x 8.9"	5.8 lbs	10810050737682
ASD-LSTL-H01W-D3CC-BK-4PACK	810050737692	3	10.6" x 7.7" x 6.9"	4.5 lbs	10810050737699
LSTL-MS WITH MOTION SENSOR					
ASD-LSTL-H01W-N3CC-MS-WH	810128112468	4	8.3" x 6.1" x 6.1"	2.1 lbs	10810128112465
ASD-LSTL-H01W-N3CC-MS-BZ	810050736404	4	8.3" x 6.1" x 6.1"	2.1 lbs	30810050736405
ASD-LSTL-H01W-N3CC-MS-BK	810050737739	4	8.3" x 6.1" x 6.1"	2.1 lbs	10810050737736
LSTL-PC WITH PHOTOCELL					
ASD-LSTL-H01W-N3CC-PC-WH	810128112451	4	8.3" x 6.1" x 6.1"	2.1 lbs	10810128112458
ASD-LSTL-H01W-N3CC-PC-BZ	810050736398	4	8.3" x 6.1" x 6.1"	2.1 lbs	30810050736399
ASD-LSTL-H01W-N3CC-PC-BK	810050737722	4	8.3" x 6.1" x 6.1"	2.1 lbs	10810050737729
LSTL-PC-MS WITH MOTION SENSOR AND PHOTOCELL					
ASD-LSTL-H01W-N3CC-PC-MS-WH	810128112475	4	8.3" x 6.1" x 6.1"	2.1 lbs	10810128112472
ASD-LSTL-H01W-N3CC-PC-MS-BZ	810050736411	4	8.3" x 6.1" x 6.1"	2.1 lbs	30810050736412
ASD-LSTL-H01W-N3CC-PC-MS-BK	810050737746	4	8.3" x 6.1" x 6.1"	2.1 lbs	10810050737743

For most up-to-date spec sheets please refer to asd-lighting.com