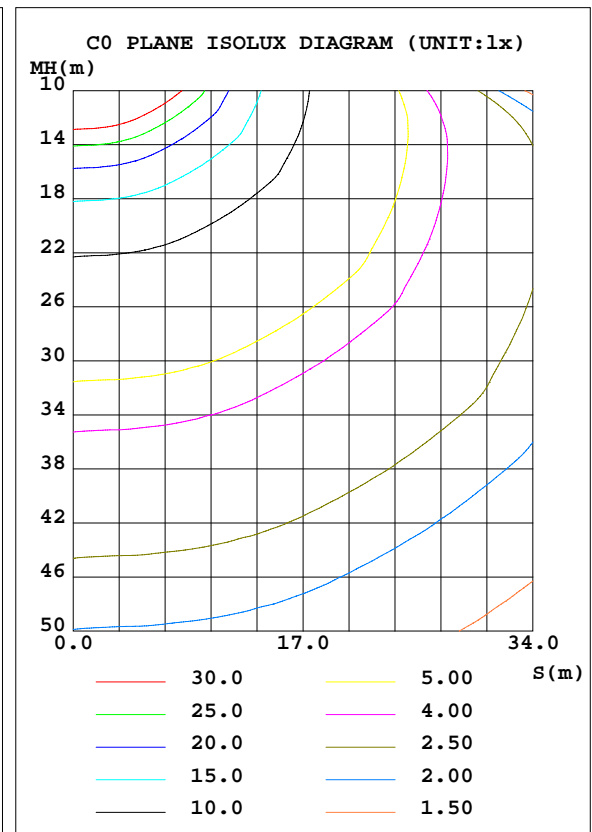
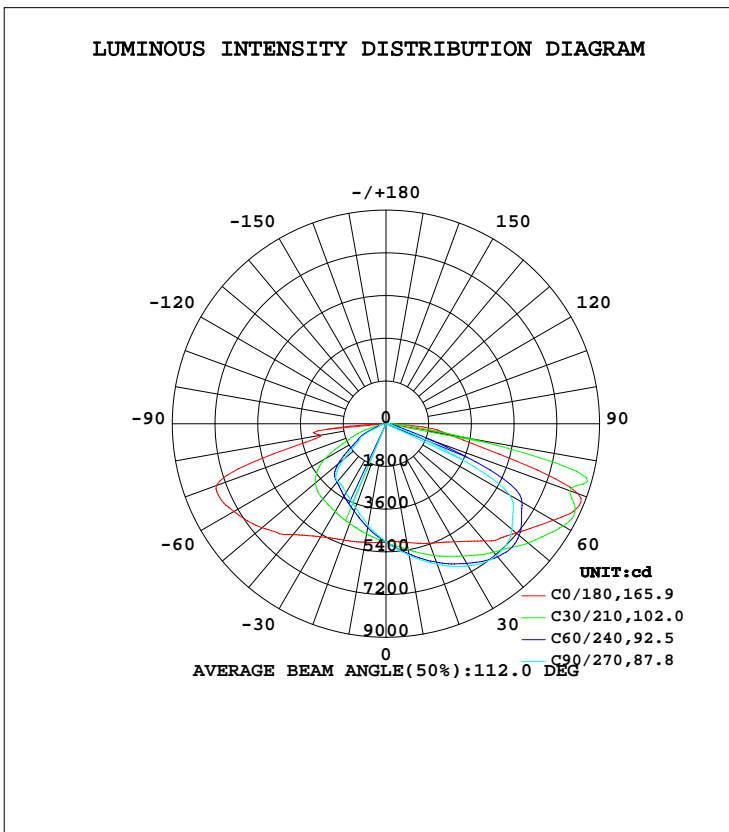


LUMINAIRE PHOTOMETRIC TEST REPORT

Test:U:120.00V I:1.5526A P:186.15W PF:0.9991 Freq:60.00Hz Lamp Flux:24420x1 lm		
NAME: ASD Lighting Corp	TYPE: LED	WEIGHT:
SPEC.: ASD-LSB2-185D50B-PRM	DIM.:	SERIAL No.:
MFR.: ASD Lighting Corp	SUR.:	Shielding Angle:

DATA OF LAMP		PHOTOMETRIC DATA Eff: 132.99 lm/W			
MODEL ASD-LSB2-185D50B-PRM		Imax(cd)	10683	S/MH(C0/180)	1.87
NOMINAL POWER(W)	185	LOR(%)	100.0	S/MH(C90/270)	1.01
RATED VOLTAGE(V)	120-277	TOTAL FLUX(lm)	24420	η UP, DN(C0-180)	0.1,66.2
NOMINAL FLUX(lm)	24420	CIE CLASS	DIRECT	η UP, DN(C180-360)	0.1,33.6
LAMPS INSIDE	1	η up(%)	0.2	CIBSE SHR NOM	1.75
TEST VOLTAGE(V)	120	η down(%)	99.8	CIBSE SHR MAX	1.75



C Range: 0 - 360DEG
 C Interval: 15.0DEG
 Test Speed: HIGH
 Temperature: 25.0DEG
 Operators: Alan Wang
 Test Date: 17 July 2021

γ Range: 0 - 180DEG
 γ Interval: 1.0DEG
 Test System: EVERFINE GO-R5000_V2 SYSTEM V2.00.442T2
 Humidity: 52.2%
 Test Distance: 2.500m [K=1.0469]
 Remarks:

ZONAL FLUX DIAGRAM

ZONAL FLUX DIAGRAM:

γ	C0	C45	C90	C135	C180	C225	C270	C315	γ	Φ zone	Φ total	%lum,lamp
10	508.2	549.0	562.6	542.2	507.5	456.7	435.1	455.9	0- 10	477.2	477.2	1.93,1.93
20	536.4	608.6	629.9	594.1	521.5	415.1	375.3	417.6	10- 20	1437	1914	7.73,7.73
30	574.2	665.8	691.5	645.6	550.0	379.8	335.9	385.9	20- 30	2405	4319	17.4,17.4
40	645.0	722.2	723.7	700.8	610.3	349.6	317.4	361.3	30- 40	3392	7711	31.1,31.1
50	715.9	771.3	693.1	764.7	681.5	301.2	230.7	313.0	40- 50	4336	12047	48.7,48.7
60	813.7	747.6	602.9	751.4	739.6	175.6	128.2	191.4	50- 60	4854	16901	68.3,68.3
70	860.9	569.6	102.7	613.2	760.5	70.41	30.09	80.41	60- 70	4649	21550	87,87
80	276.4	61.54	23.87	70.25	280.4	17.44	13.37	17.09	70- 80	2636	24185	97.7,97.7
90	10.64	5.782	4.685	5.942	7.236	0.5907	0.1105	0.6247	80- 90	528.0	24713	99.8,99.8
100	0.3230	0.0919	0.0545	0.1428	0.7013	0.5133	0.2869	0.5753	90-100	16.76	24730	99.9,99.9
110	0.3990	0.1293	0.0812	0.2212	0.6956	0.5900	0.4206	0.5934	100-110	3.882	24734	99.9,99.9
120	0.4773	0.1806	0.1374	0.2816	0.6516	0.6373	0.5479	0.6306	110-120	4.089	24738	99.9,99.9
130	0.5675	0.2466	0.2106	0.3213	0.7018	0.7832	0.7246	0.7733	120-130	4.435	24742	99.9,99.9
140	0.5395	0.3247	0.3023	0.3906	0.7092	0.8244	0.8435	0.7992	130-140	4.436	24747	100,100
150	0.4888	0.3970	0.4043	0.4350	0.7179	0.8401	0.9043	0.8171	140-150	3.817	24751	100,100
160	0.5247	0.4846	0.5276	0.5197	0.7531	0.8263	0.9223	0.8627	150-160	3.012	24754	100,100
170	0.5837	0.5882	0.6470	0.6189	0.7398	0.7527	0.8043	0.8063	160-170	1.940	24756	100,100
180	0.7091	0.7091	0.7091	0.7091	0.7202	0.7202	0.7202	0.7202	170-180	0.6668	24756	100,100
DEG	LUMINOUS INTENSITY: $\times 10\text{cd}$									UNIT:lm		

Conical surface Flux(90deg): 9779.9 lm

%lum = 39.5%

%lamp = 39.5%

Conical surface Flux(120deg): 16901 lm

%lum = 68.3%

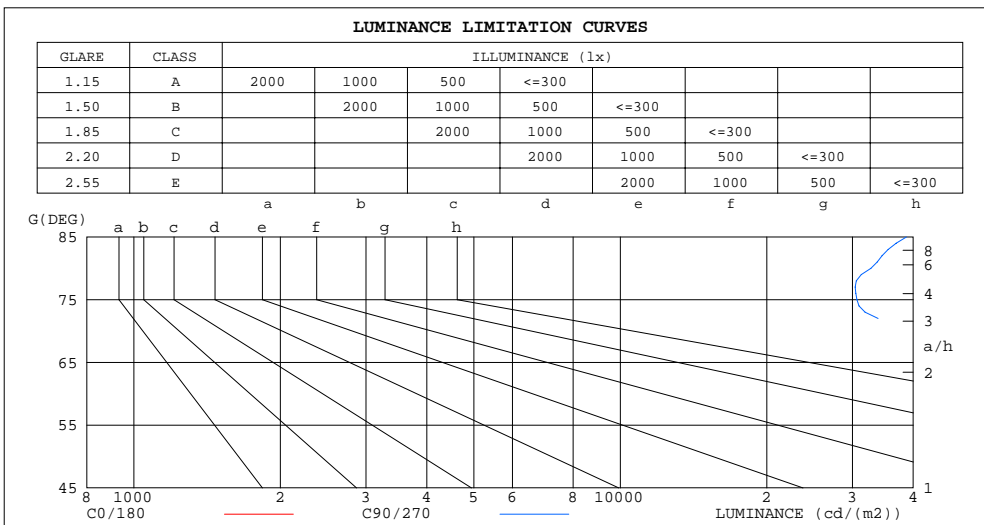
%lamp = 68.3%

C Range: 0 - 360DEG
 C Interval: 15.0DEG
 Test Speed: HIGH
 Temperature: 25.0DEG
 Operators: Alan Wang
 Test Date: 17 July 2021

γ Range: 0 - 180DEG
 γ Interval: 1.0DEG
 Test System: EVERFINE GO-R5000_V2 SYSTEM V2.00.442T2
 Humidity: 52.2%
 Test Distance: 2.500m [K=1.0469]
 Remarks:

LUMINANCE LIMITATION CURVES

Test:U:120.00V I:1.5526A P:186.15W PF:0.9991 Freq:60.00Hz Lamp Flux:24420x1 lm		
NAME: ASD Lighting Corp	TYPE: LED	WEIGHT:
SPEC.: ASD-LSB2-185D50B-PRM	DIM.:	SERIAL No.:
MFR.: ASD Lighting Corp	SUR.:	Shielding Angle:



LUMINANCE cd/(m2)		
G (DEG)	C0/180	C90/270
85	417730	38745
80	379010	32730
75	453846	30639
70	599279	71506
65	491247	192819
60	387500	287112
55	315485	271199
50	265167	256727
45	229500	241606

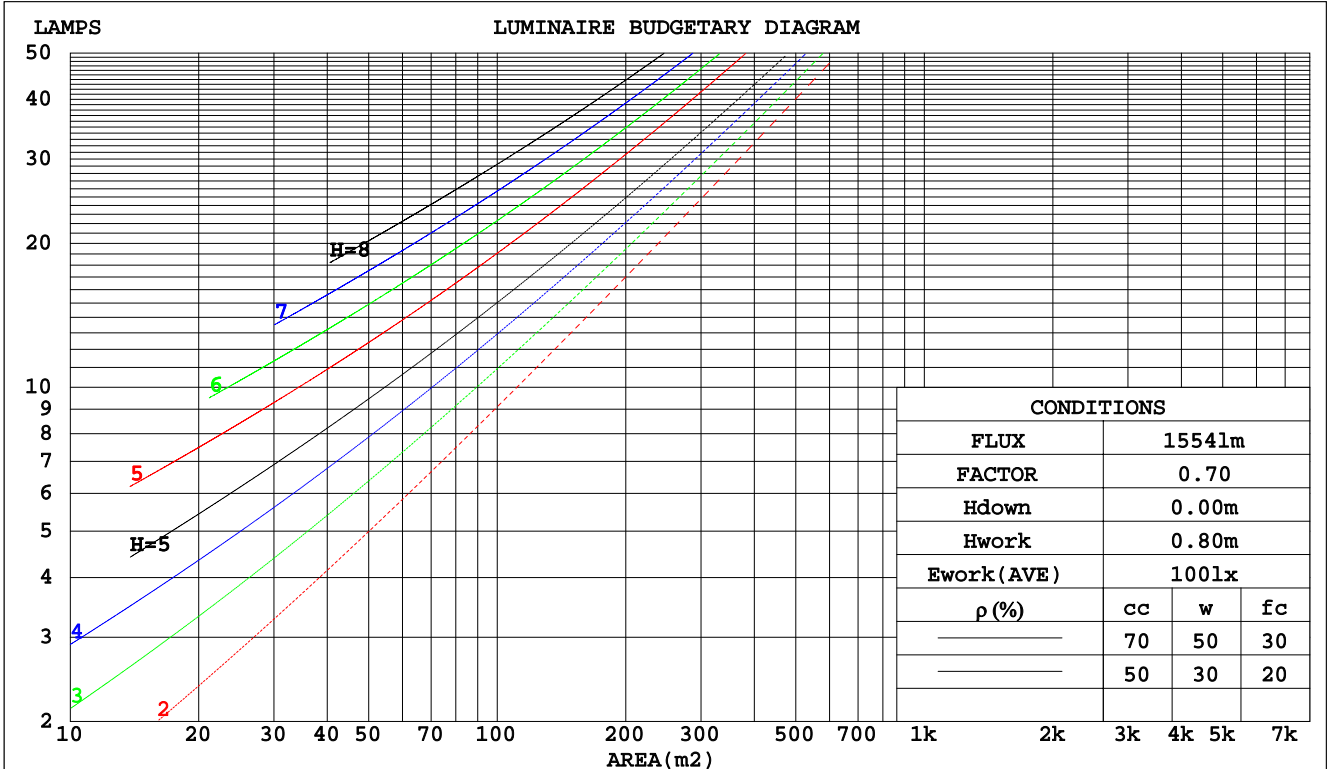
C Range: 0 - 360DEG
 C Interval: 15.0DEG
 Test Speed: HIGH
 Temperature: 25.0DEG
 Operators: Alan Wang
 Test Date: 17 July 2021

γ Range: 0 - 180DEG
 γ Interval: 1.0DEG
 Test System: EVERFINE GO-R5000_V2 SYSTEM V2.00.442T2
 Humidity: 52.2%
 Test Distance: 2.500m [K=1.0469]
 Remarks:

CU AND LUMINAIRE BUDGETARY ESTIMATE DIAGRAM

Test:U:120.00V I:1.5526A P:186.15W PF:0.9991 Freq:60.00Hz Lamp Flux:24420x1 lm		
NAME: ASD Lighting Corp	TYPE: LED	WEIGHT:
SPEC.: ASD-LSB2-185D50B-PRM	DIM.:	SERIAL No.:
MFR.: ASD Lighting Corp	SUR.:	Shielding Angle:

pcc	80%			70%			50%			30%			10%			0
	50%	30%	10%	50%	30%	10%	50%	30%	10%	50%	30%	10%	50%	30%	10%	0
pw																0
pfc	20%			20%			20%			20%			20%			0
RCR	RCR:Room Cavity Ratio Coefficients of Utilization(CU)															
0.0	1.19	1.19	1.19	1.16	1.16	1.16	1.11	1.11	1.11	1.06	1.06	1.06	1.02	1.02	1.02	.00
1.0	1.01	.97	.92	.99	.95	.91	.95	.91	.88	.91	.88	.85	.87	.85	.82	.80
2.0	.86	.78	.72	.84	.77	.71	.80	.74	.69	.77	.72	.67	.74	.70	.66	.63
3.0	.74	.64	.57	.72	.63	.56	.69	.62	.55	.66	.60	.54	.63	.58	.53	.51
4.0	.64	.54	.47	.63	.53	.46	.60	.52	.45	.57	.50	.45	.55	.49	.44	.42
5.0	.56	.46	.39	.55	.46	.38	.53	.44	.38	.51	.43	.38	.49	.42	.37	.35
6.0	.50	.40	.33	.49	.39	.33	.47	.39	.32	.45	.38	.32	.43	.37	.32	.29
7.0	.45	.35	.28	.44	.35	.28	.42	.34	.28	.41	.33	.28	.39	.32	.27	.25
8.0	.40	.31	.25	.40	.31	.25	.38	.30	.24	.37	.30	.24	.36	.29	.24	.22
9.0	.37	.28	.22	.36	.28	.22	.35	.27	.22	.34	.27	.21	.33	.26	.21	.19
10.0	.34	.25	.19	.33	.25	.19	.32	.24	.19	.31	.24	.19	.30	.24	.19	.17



C Range: 0 - 360DEG
 C Interval: 15.0DEG
 Test Speed: HIGH
 Temperature: 25.0DEG
 Operators: Alan Wang
 Test Date: 17 July 2021

γ Range: 0 - 180DEG
 γ Interval: 1.0DEG
 Test System: EVERFINE GO-R5000_V2 SYSTEM V2.00.442T2
 Humidity: 52.2%
 Test Distance: 2.500m [K=1.0469]
 Remarks:

WEC AND CCEC

Test:U:120.00V I:1.5526A P:186.15W PF:0.9991 Freq:60.00Hz Lamp Flux:24420x1 lm		
NAME: ASD Lighting Corp	TYPE: LED	WEIGHT:
SPEC.: ASD-LSB2-185D50B-PRM	DIM.:	SERIAL No.:
MFR.: ASD Lighting Corp	SUR.:	Shielding Angle:

ρcc	80%			70%			50%			30%			10%			0
ρw	50%	30%	10%	50%	30%	10%	50%	30%	10%	50%	30%	10%	50%	30%	10%	0
ρfc	20%			20%			20%			20%			20%			0
RCR	RCR:Room Cavity Ratio						Wall Exitance Coefficients(WEC)									
0.0																
1.0	.355	.202	.064	.348	.199	.063	.334	.192	.061	.322	.186	.060	.310	.180	.058	
2.0	.333	.183	.056	.327	.180	.055	.315	.175	.054	.303	.170	.053	.293	.166	.052	
3.0	.306	.163	.049	.300	.161	.048	.289	.157	.048	.279	.153	.047	.270	.149	.046	
4.0	.279	.145	.043	.274	.143	.042	.264	.140	.042	.255	.137	.041	.247	.134	.041	
5.0	.255	.130	.038	.251	.129	.038	.242	.126	.037	.234	.124	.037	.227	.121	.036	
6.0	.235	.118	.034	.231	.117	.034	.223	.114	.033	.216	.112	.033	.209	.110	.033	
7.0	.217	.107	.030	.213	.106	.030	.206	.104	.030	.200	.102	.030	.194	.101	.030	
8.0	.201	.098	.028	.198	.097	.028	.192	.096	.027	.186	.094	.027	.180	.093	.027	
9.0	.187	.091	.025	.184	.090	.025	.179	.088	.025	.174	.087	.025	.169	.086	.025	
10.0	.175	.084	.023	.172	.083	.023	.167	.082	.023	.163	.081	.023	.158	.080	.023	

ρcc	80%			70%			50%			30%			10%			0
ρw	50%	30%	10%	50%	30%	10%	50%	30%	10%	50%	30%	10%	50%	30%	10%	0
ρfc	20%			20%			20%			20%			20%			0
RCR	RCR:Room Cavity Ratio						Ceiling Cavity Exitance Coefficients(CCEC)									
0.0	.192	.192	.192	.164	.164	.164	.112	.112	.112	.064	.064	.064	.021	.021	.021	
1.0	.185	.157	.132	.158	.135	.114	.108	.093	.079	.062	.054	.046	.020	.017	.015	
2.0	.179	.133	.094	.153	.115	.082	.105	.079	.057	.061	.046	.033	.019	.015	.011	
3.0	.173	.116	.071	.148	.100	.061	.102	.069	.043	.059	.041	.025	.019	.013	.008	
4.0	.166	.103	.055	.142	.089	.048	.098	.062	.034	.057	.036	.020	.018	.012	.007	
5.0	.158	.093	.045	.136	.080	.039	.094	.056	.028	.054	.033	.016	.017	.011	.005	
6.0	.151	.085	.037	.130	.073	.033	.089	.051	.023	.052	.030	.014	.017	.010	.005	
7.0	.144	.078	.032	.123	.068	.028	.085	.047	.020	.050	.028	.012	.016	.009	.004	
8.0	.137	.072	.028	.118	.063	.025	.081	.044	.017	.047	.026	.010	.015	.009	.003	
9.0	.130	.067	.025	.112	.058	.022	.078	.041	.015	.045	.024	.009	.015	.008	.003	
10.0	.124	.063	.023	.107	.055	.020	.074	.039	.014	.043	.023	.008	.014	.007	.003	

C Range: 0 - 360DEG
 C Interval: 15.0DEG
 Test Speed: HIGH
 Temperature: 25.0DEG
 Operators: Alan Wang
 Test Date: 17 July 2021

γ Range: 0 - 180DEG
 γ Interval: 1.0DEG
 Test System: EVERFINE GO-R5000_V2 SYSTEM V2.00.442T2
 Humidity: 52.2%
 Test Distance: 2.500m [K=1.0469]
 Remarks:

UGR(Unified Glare Rating) Table

Test:U:120.00V I:1.5526A P:186.15W PF:0.9991 Freq:60.00Hz Lamp Flux:24420x1 lm										
NAME: ASD Lighting Corp					TYPE: LED			WEIGHT:		
SPEC.: ASD-LSB2-185D50B-PRM					DIM.:			SERIAL No.:		
MFR.: ASD Lighting Corp					SUR.:			Shielding Angle:		
ceiling/cavity	0.7	0.7	0.5	0.5	0.3	0.7	0.7	0.5	0.5	0.3
walls	0.5	0.3	0.5	0.3	0.3	0.5	0.3	0.5	0.3	0.3
working plane	0.2	0.2	0.2	0.2	0.2	0.2	0.2	0.2	0.2	0.2
Room dimensions	Viewed crosswise					Viewed endwise				
x = 2H y = 2H	35.4	37.2	35.7	37.5	37.8	33.2	35.1	33.6	35.4	35.7
3H	39.9	41.5	40.3	41.9	42.2	33.6	35.2	33.9	35.5	35.9
4H	41.0	42.6	41.4	42.9	43.3	33.5	35.1	33.9	35.4	35.8
6H	41.4	42.8	41.8	43.2	43.6	33.5	35.0	33.9	35.3	35.7
8H	41.5	42.9	42.0	43.3	43.7	33.5	34.9	33.9	35.3	35.7
12H	41.7	43.1	42.2	43.4	43.9	33.5	34.8	33.9	35.2	35.6
4H 2H	36.1	37.7	36.5	38.0	38.4	34.8	36.3	35.2	36.7	37.0
3H	40.8	42.1	41.2	42.5	42.9	35.1	36.5	35.6	36.9	37.3
4H	42.4	43.6	42.8	44.0	44.4	35.1	36.3	35.5	36.7	37.2
6H	42.9	43.9	43.3	44.4	44.8	35.1	36.2	35.6	36.6	37.1
8H	43.1	44.1	43.6	44.5	45.0	35.1	36.1	35.5	36.5	37.0
12H	43.3	44.2	43.8	44.7	45.2	35.1	36.0	35.6	36.5	36.9
8H 4H	42.5	43.5	42.9	43.9	44.4	36.4	37.4	36.9	37.9	38.3
6H	43.2	44.0	43.7	44.5	45.0	36.4	37.2	36.9	37.7	38.2
8H	43.5	44.2	44.0	44.7	45.2	36.4	37.1	36.9	37.7	38.1
12H	43.8	44.5	44.3	45.0	45.5	36.4	37.1	36.9	37.6	38.1
12H 4H	42.5	43.4	42.9	43.8	44.3	36.9	37.8	37.4	38.3	38.7
6H	43.2	43.9	43.7	44.4	44.9	36.9	37.6	37.4	38.1	38.6
8H	43.5	44.1	44.0	44.6	45.2	36.9	37.5	37.4	38.0	38.6
CIE190: 2010										

CIE190: 2010
Area: 0.042 m2

C Range: 0 - 360DEG
C Interval: 15.0DEG
Test Speed: HIGH
Temperature: 25.0DEG
Operators: Alan Wang
Test Date: 17 July 2021

γ Range: 0 - 180DEG
γ Interval: 1.0DEG
Test System: EVERFINE GO-R5000_V2 SYSTEM V2.00.442T2
Humidity: 52.2%
Test Distance: 2.500m [K=1.0469]
Remarks:

UTILIZATION FACTORS TABLE

Test:U:120.00V I:1.5526A P:186.15W PF:0.9991 Freq:60.00Hz Lamp Flux:24420x1 lm		
NAME: ASD Lighting Corp	TYPE: LED	WEIGHT:
SPEC.: ASD-LSB2-185D50B-PRM	DIM.:	SERIAL No.:
MFR.: ASD Lighting Corp	SUR.:	Shielding Angle:

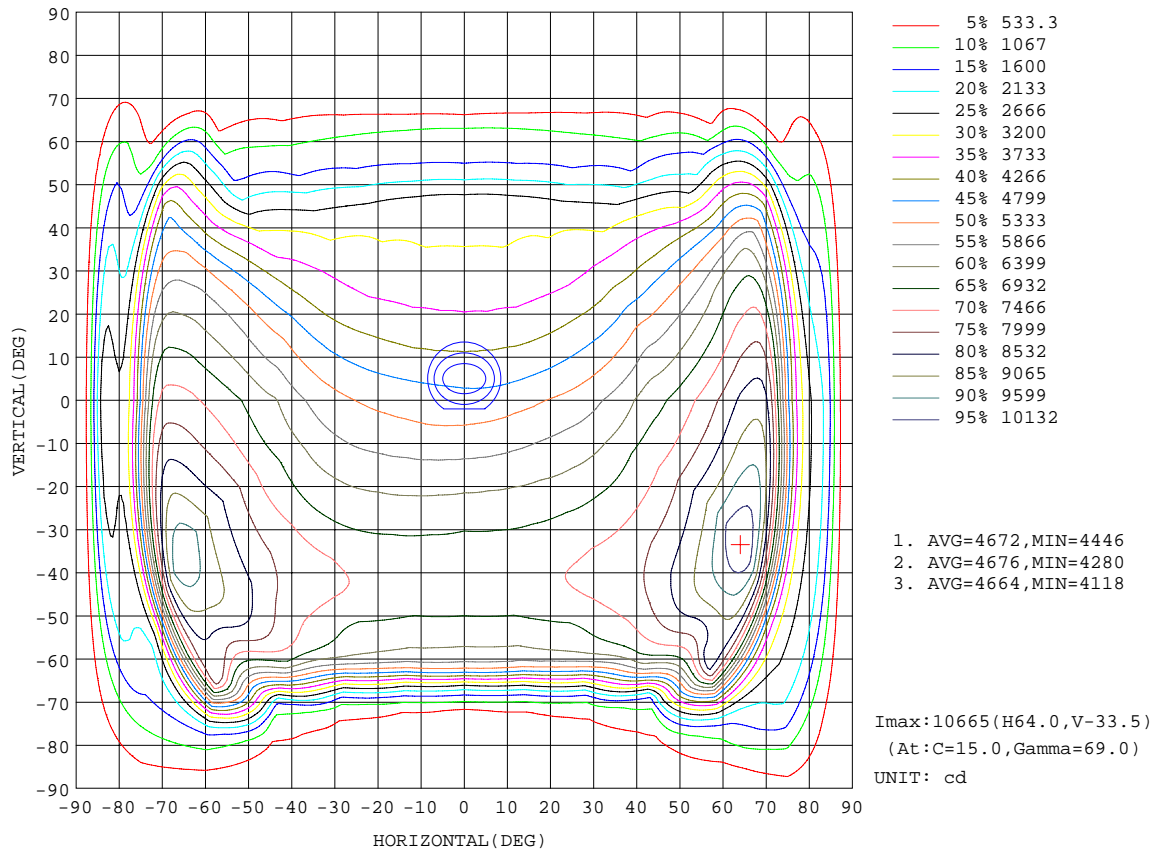
REFLECTANCE										
Ceiling	0.8	0.8	0.8	0.7	0.7	0.7	0.5	0.5	0.5	0
Walls	0.7	0.5	0.3	0.7	0.5	0.3	0.7	0.5	0.3	0
Working plane	0.2	0.2	0.2	0.2	0.2	0.2	0.2	0.2	0.2	0
ROOM INDEX	UTILIZATION FACTORS(PERCENT) $k(RI) \times RCR = 5$									
k = 0.60	50	37	29	49	37	29	48	36	29	22
0.80	60	47	38	59	46	38	57	45	38	30
1.00	69	56	47	67	55	47	65	57	47	38
1.25	76	64	56	75	63	55	72	62	55	46
1.50	82	70	62	80	69	62	77	68	61	52
2.00	90	80	72	88	79	72	84	76	70	61
2.50	95	86	79	93	84	78	89	82	76	67
3.00	99	91	84	97	89	83	92	86	81	72
4.00	104	97	92	101	95	90	97	92	88	78
5.00	107	101	97	104	99	95	100	95	92	82
ROOM INDEX	UF(total)									Direct
According to DIN EN 13032-2 2004			Suspended				SHRNOM = 1.25			

C Range: 0 - 360DEG
 C Interval: 15.0DEG
 Test Speed: HIGH
 Temperature: 25.0DEG
 Operators: Alan Wang
 Test Date: 17 July 2021

γ Range: 0 - 180DEG
 γ Interval: 1.0DEG
 Test System: EVERFINE GO-R5000_V2 SYSTEM V2.00.442T2
 Humidity: 52.2%
 Test Distance: 2.500m [K=1.0469]
 Remarks:

ISOCANDELA DIAGRAM

Test:U:120.00V I:1.5526A P:186.15W PF:0.9991 Freq:60.00Hz Lamp Flux:24420x1 lm		
NAME: ASD Lighting Corp	TYPE: LED	WEIGHT:
SPEC.: ASD-LSB2-185D50B-PRM	DIM.:	SERIAL No.:
MFR.: ASD Lighting Corp	SUR.:	Shielding Angle:

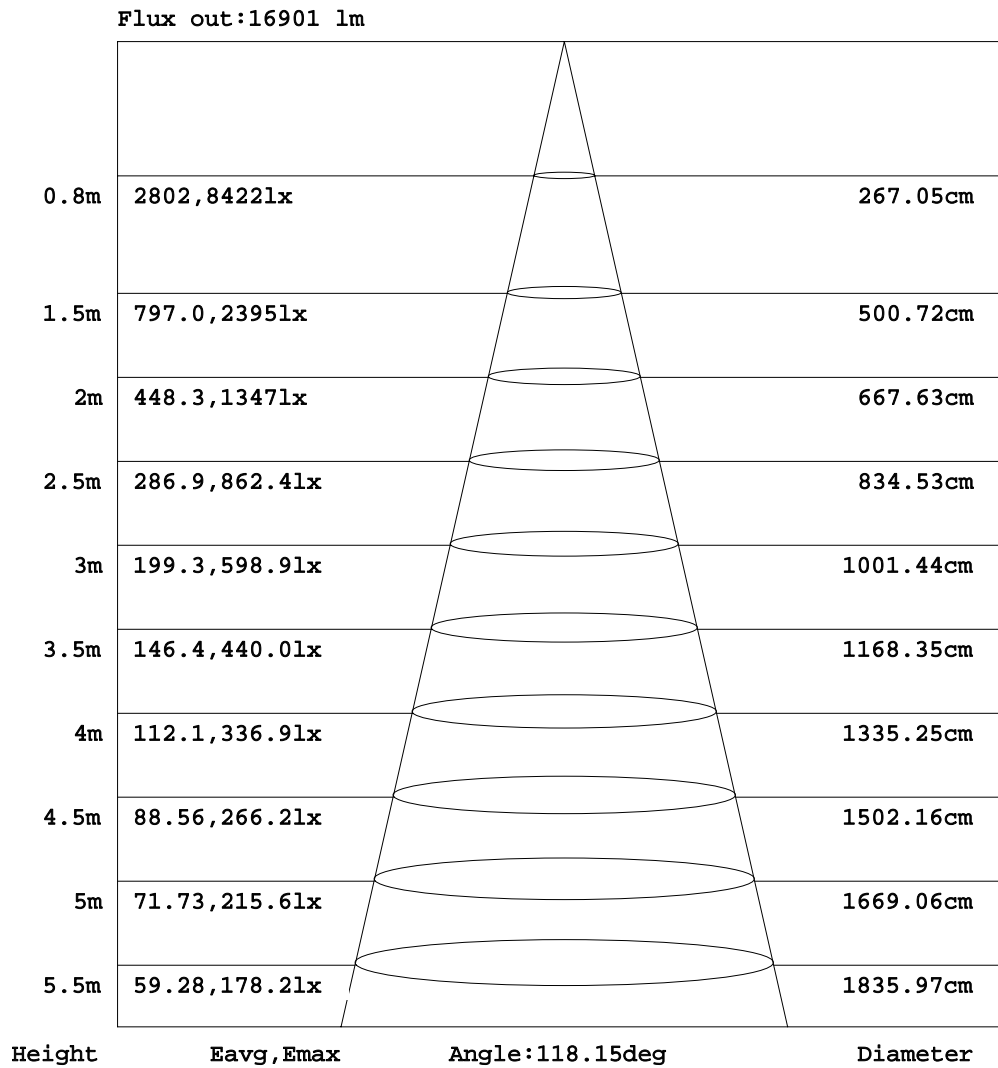


C Range: 0 - 360DEG
 C Interval: 15.0DEG
 Test Speed: HIGH
 Temperature: 25.0DEG
 Operators: Alan Wang
 Test Date: 17 July 2021

γ Range: 0 - 180DEG
 γ Interval: 1.0DEG
 Test System: EVERFINE GO-R5000_V2 SYSTEM V2.00.442T2
 Humidity: 52.2%
 Test Distance: 2.500m [K=1.0469]
 Remarks:

AAI Figure

Test:U:120.00V I:1.5526A P:186.15W PF:0.9991 Freq:60.00Hz Lamp Flux:24420x1 lm		
NAME: ASD Lighting Corp	TYPE: LED	WEIGHT:
SPEC.: ASD-LSB2-185D50B-PRM	DIM.:	SERIAL No.:
MFR.: ASD Lighting Corp	SUR.:	Shielding Angle:



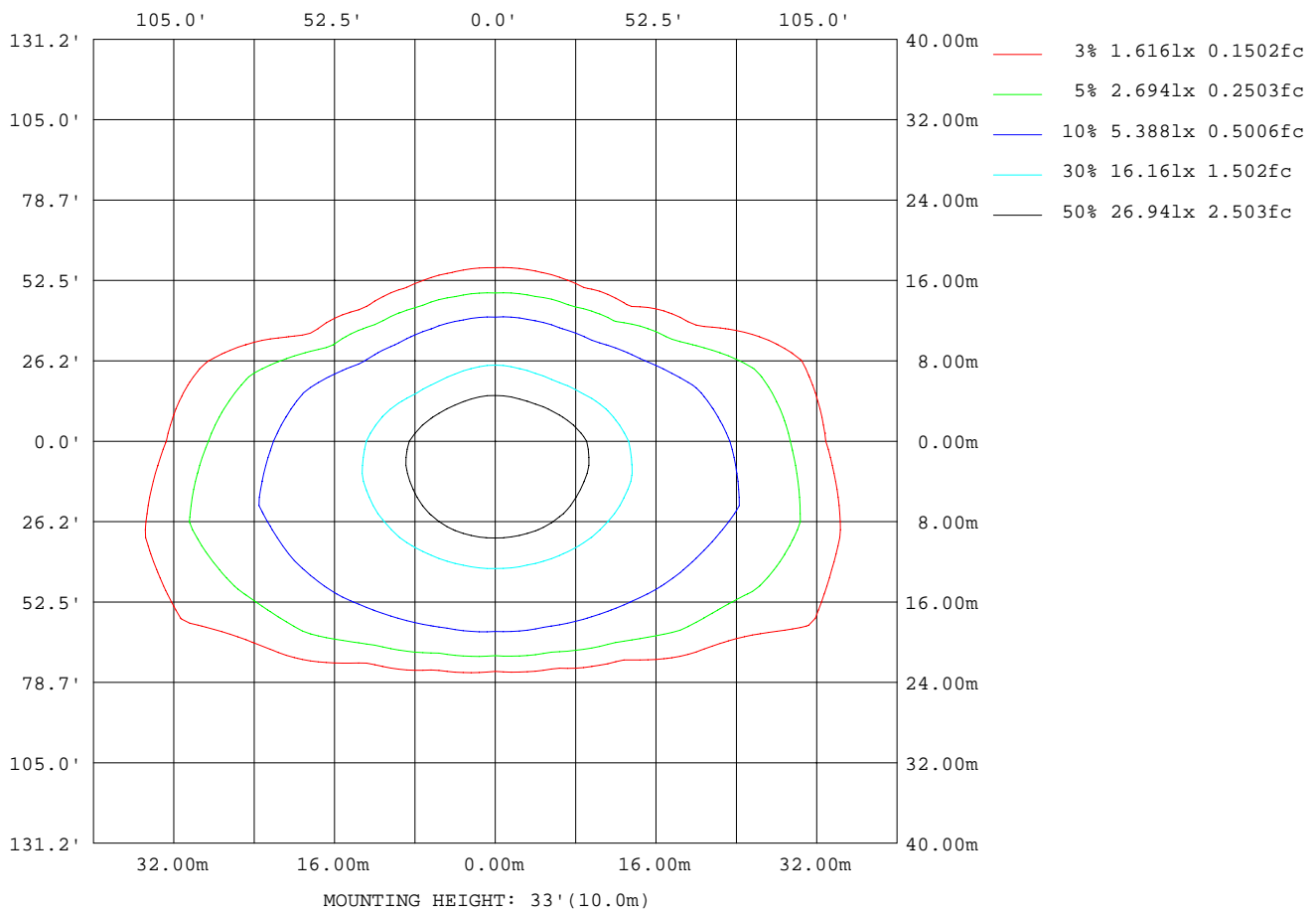
Note:The Curves indicate the illuminated area and the average illumination when the luminaire is at different distance.

C Range: 0 - 360DEG
 C Interval: 15.0DEG
 Test Speed: HIGH
 Temperature: 25.0DEG
 Operators:Alan Wang
 Test Date:17 July 2021

γ Range: 0 - 180DEG
 γ Interval: 1.0DEG
 Test System:EVERFINE GO-R5000_V2 SYSTEM V2.00.442T2
 Humidity: 52.2%
 Test Distance:2.500m [K=1.0469]
 Remarks:

ISOLUX DIAGRAM

Test:U:120.00V I:1.5526A P:186.15W PF:0.9991 Freq:60.00Hz Lamp Flux:24420x1 lm		
NAME: ASD Lighting Corp	TYPE: LED	WEIGHT:
SPEC.: ASD-LSB2-185D50B-PRM	DIM.:	SERIAL No.:
MFR.: ASD Lighting Corp	SUR.:	Shielding Angle:



C Range: 0 - 360DEG
 C Interval: 15.0DEG
 Test Speed: HIGH
 Temperature: 25.0DEG
 Operators: Alan Wang
 Test Date: 17 July 2021

γ Range: 0 - 180DEG
 γ Interval: 1.0DEG
 Test System: EVERFINE GO-R5000_V2 SYSTEM V2.00.442T2
 Humidity: 52.2%
 Test Distance: 2.500m [K=1.0469]
 Remarks:

LED Avg.L Report

Test:U:120.00V I:1.5526A P:186.15W PF:0.9991 Freq:60.00Hz Lamp Flux:24420x1 lm		
NAME: ASD Lighting Corp	TYPE: LED	WEIGHT:
SPEC.: ASD-LSB2-185D50B-PRM	DIM.:	SERIAL No.:
MFR.: ASD Lighting Corp	SUR.:	Shielding Angle:

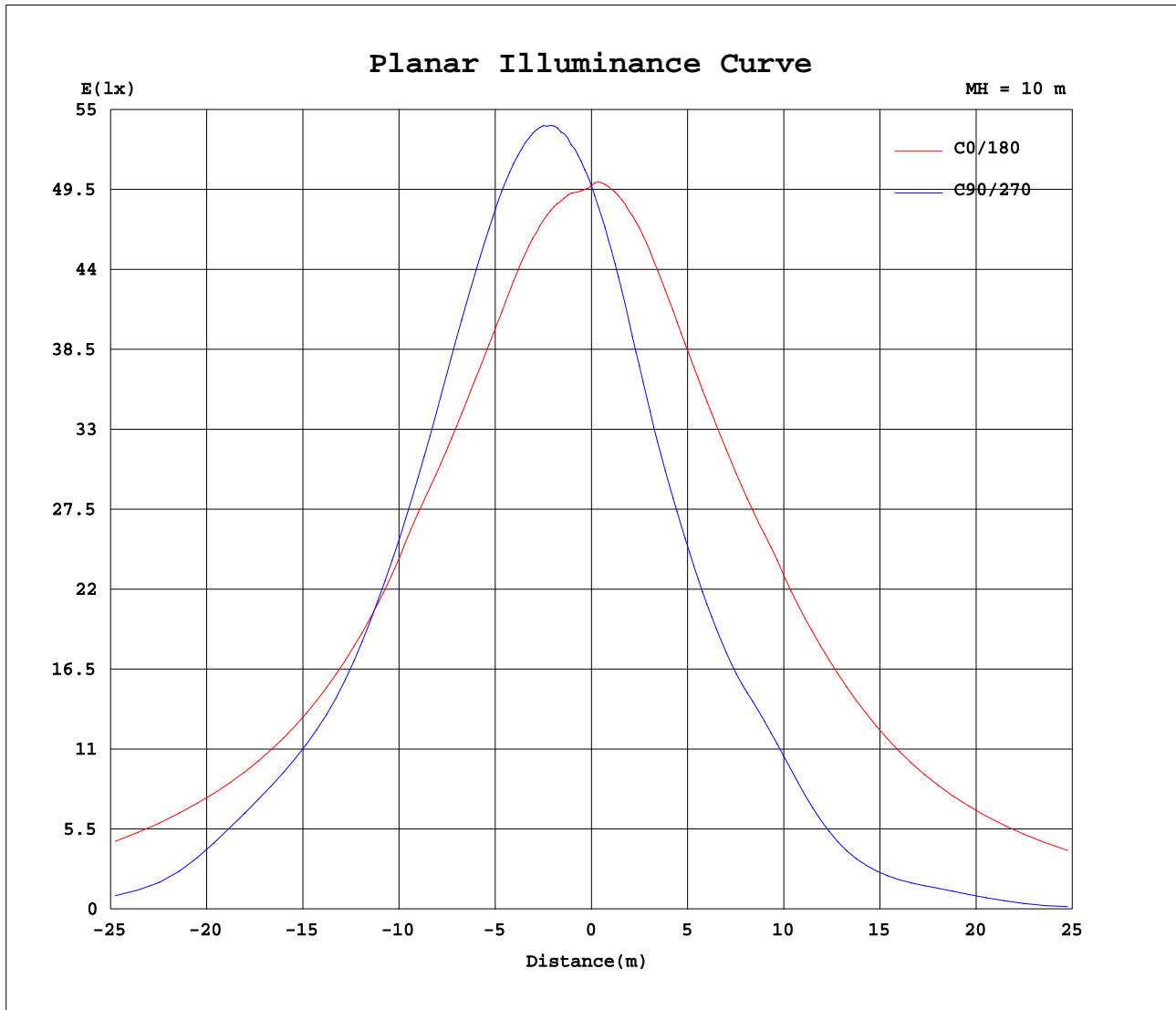
AvgL	cd/m2
L_0~180(65)av	460869
L_0~180(75)av	452048
L_0~180(85)av	509353
L_90~270(65)av	117888
L_90~270(75)av	26241
L_90~270(85)av	19373
L_45(65)av	242036
L_45(75)av	95007
L_45(85)av	48773

Standard: GB/T 29293-2012

C Range: 0 - 360DEG
C Interval: 15.0DEG
Test Speed: HIGH
Temperature: 25.0DEG
Operators: Alan Wang
Test Date: 17 July 2021

γ Range: 0 - 180DEG
 γ Interval: 1.0DEG
Test System: EVERFINE GO-R5000_V2 SYSTEM V2.00.442T2
Humidity: 52.2%
Test Distance: 2.500m [K=1.0469]
Remarks:

Planar Illuminance Curve



C Range: 0 - 360DEG
 C Interval: 15.0DEG
 Test Speed: HIGH
 Temperature: 25.0DEG
 Operators: Alan Wang
 Test Date: 17 July 2021

γ Range: 0 - 180DEG
 γ Interval: 1.0DEG
 Test System: EVERFINE GO-R5000_V2 SYSTEM V2.00.442T2
 Humidity: 52.2%
 Test Distance: 2.500m [K=1.0469]
 Remarks:

LUMINOUS DISTRIBUTION INTENSITY DATA

Test:U:120.00V I:1.5526A P:186.15W PF:0.9991 Freq:60.00Hz Lamp Flux:24420x1 lm		
NAME: ASD Lighting Corp	TYPE: LED	WEIGHT:
SPEC.: ASD-LSB2-185D50B-PRM	DIM.:	SERIAL No.:
MFR.: ASD Lighting Corp	SUR.:	Shielding Angle:

Table--1

UNIT: x10cd

C(DEG) γ (DEG)	0	15	30	45	60	75	90	105	120	135	150	165	180	195	210	225	240	255	270
0	498	498	498	498	498	498	498	498	498	498	498	498	498	498	498	498	498	498	498
5	499	512	518	523	527	528	529	527	523	518	512	510	503	493	485	478	472	468	466
10	508	526	538	549	557	561	563	559	552	542	530	519	507	489	472	457	445	438	435
15	522	546	564	579	589	595	597	592	582	568	551	532	514	486	459	435	417	407	403
20	536	567	591	609	620	629	630	623	611	594	572	546	522	484	448	415	392	380	375
25	551	589	616	638	652	661	663	654	639	620	594	563	532	486	438	397	371	359	355
30	574	615	644	666	680	688	691	682	666	646	618	586	550	491	428	380	353	340	336
35	605	648	675	695	708	713	715	709	694	672	646	615	576	502	420	365	335	323	321
40	645	690	706	722	732	727	724	726	723	701	678	655	610	519	414	350	322	316	317
45	682	731	739	752	743	724	718	725	738	737	717	697	649	539	405	330	307	300	297
50	716	775	782	771	733	700	693	701	731	765	763	742	681	552	388	301	263	240	231
55	760	840	820	768	698	659	653	659	696	766	803	803	713	567	355	251	192	168	160
60	814	916	861	748	662	615	603	620	667	751	844	865	740	572	299	176	138	130	128
65	872	1023	878	717	539	385	342	397	566	746	882	938	764	563	204	124	103	85.4	76.3
70	861	1057	824	570	212	120	103	127	236	613	836	1013	761	525	137	70.4	45.6	30.1	30.1
75	493	746	873	146	61.9	36.4	33.3	38.3	65.1	199	848	807	489	463	56.1	33.9	25.7	23.7	23.7
80	276	311	370	61.5	32.4	24.2	23.9	24.4	33.7	70.3	508	231	280	97.5	21.1	17.4	14.9	15.1	13.4
85	153	206	91.7	28.8	16.5	14.4	14.2	14.2	17.5	34.4	119	143	220	19.0	7.12	3.95	1.87	0.68	0.00
90	10.6	31.7	14.7	5.78	5.24	5.25	4.68	5.18	5.26	5.94	20.5	25.6	7.24	3.16	1.18	0.59	0.24	0.12	0.11
95	0.33	3.43	1.33	0.13	0.36	0.14	0.05	0.14	0.14	0.17	0.47	3.22	0.77	0.69	0.56	0.44	0.30	0.21	0.19
100	0.32	0.24	0.16	0.09	0.06	0.06	0.05	0.06	0.09	0.14	0.21	0.29	0.70	0.71	0.62	0.51	0.41	0.31	0.29
105	0.36	0.28	0.19	0.11	0.07	0.07	0.07	0.07	0.11	0.18	0.26	0.34	0.73	0.72	0.65	0.57	0.50	0.40	0.37
110	0.40	0.31	0.21	0.13	0.09	0.08	0.08	0.09	0.15	0.22	0.31	0.39	0.70	0.69	0.64	0.59	0.54	0.46	0.42
115	0.44	0.33	0.23	0.15	0.11	0.11	0.11	0.12	0.18	0.26	0.35	0.44	0.67	0.68	0.65	0.61	0.57	0.52	0.47
120	0.48	0.37	0.26	0.18	0.14	0.14	0.14	0.16	0.21	0.28	0.38	0.48	0.65	0.69	0.67	0.64	0.64	0.58	0.55
125	0.54	0.41	0.30	0.21	0.17	0.17	0.17	0.19	0.25	0.30	0.42	0.53	0.66	0.73	0.71	0.72	0.71	0.66	0.64
130	0.57	0.44	0.33	0.25	0.21	0.20	0.21	0.23	0.28	0.32	0.45	0.56	0.70	0.78	0.77	0.78	0.77	0.75	0.72
135	0.57	0.46	0.36	0.29	0.25	0.25	0.25	0.28	0.31	0.36	0.45	0.57	0.72	0.78	0.81	0.81	0.80	0.80	0.79
140	0.54	0.46	0.38	0.32	0.30	0.29	0.30	0.32	0.35	0.39	0.44	0.55	0.71	0.76	0.80	0.82	0.83	0.84	0.84
145	0.51	0.46	0.41	0.36	0.34	0.34	0.35	0.37	0.40	0.41	0.44	0.52	0.71	0.75	0.80	0.83	0.85	0.87	0.88
150	0.49	0.46	0.43	0.40	0.38	0.39	0.40	0.42	0.44	0.43	0.45	0.49	0.72	0.76	0.81	0.84	0.86	0.89	0.90
155	0.50	0.48	0.46	0.44	0.43	0.45	0.47	0.48	0.49	0.48	0.48	0.50	0.74	0.76	0.81	0.84	0.87	0.90	0.92
160	0.52	0.51	0.49	0.48	0.49	0.51	0.53	0.54	0.54	0.52	0.50	0.52	0.75	0.76	0.79	0.83	0.85	0.89	0.92
165	0.55	0.54	0.54	0.54	0.55	0.57	0.59	0.60	0.59	0.57	0.55	0.54	0.75	0.75	0.76	0.78	0.80	0.83	0.87
170	0.58	0.58	0.58	0.59	0.60	0.63	0.65	0.65	0.64	0.62	0.60	0.57	0.74	0.74	0.74	0.75	0.75	0.77	0.80
175	0.65	0.64	0.64	0.64	0.66	0.68	0.69	0.70	0.69	0.68	0.66	0.64	0.74	0.74	0.74	0.74	0.74	0.74	0.77
180	0.71	0.71	0.71	0.71	0.71	0.71	0.71	0.71	0.71	0.71	0.71	0.71	0.72	0.72	0.72	0.72	0.72	0.72	0.72

C Range: 0 - 360DEG
 C Interval: 15.0DEG
 Test Speed: HIGH
 Temperature: 25.0DEG
 Operators: Alan Wang
 Test Date: 17 July 2021

γ Range: 0 - 180DEG
 γ Interval: 1.0DEG
 Test System: EVERFINE GO-R5000_V2 SYSTEM V2.00.442T2
 Humidity: 52.2%
 Test Distance: 2.500m [K=1.0469]
 Remarks:

LUMINOUS DISTRIBUTION INTENSITY DATA

Test:U:120.00V I:1.5526A P:186.15W PF:0.9991 Freq:60.00Hz Lamp Flux:24420x1 lm		
NAME: ASD Lighting Corp	TYPE: LED	WEIGHT:
SPEC.: ASD-LSB2-185D50B-PRM	DIM.:	SERIAL No.:
MFR.: ASD Lighting Corp	SUR.:	Shielding Angle:

Table--2

UNIT: x10cd

C(DEG) γ (DEG)	285	300	315	330	345														
0	498	498	498	498	498														
5	468	471	475	482	489														
10	437	445	456	470	487														
15	407	418	437	461	488														
20	379	393	418	452	492														
25	358	371	400	447	499														
30	339	354	386	443	509														
35	323	338	374	439	525														
40	316	324	361	440	549														
45	302	310	342	438	575														
50	244	270	313	433	586														
55	170	198	267	416	606														
60	131	138	191	373	631														
65	89.2	107	132	282	658														
70	30.7	48.0	80.4	196	639														
75	23.3	27.7	34.0	77.8	475														
80	15.4	14.9	17.1	24.4	113														
85	0.95	3.01	4.35	6.86	19.5														
90	0.13	0.28	0.62	1.16	3.49														
95	0.22	0.33	0.49	0.59	0.62														
100	0.32	0.44	0.58	0.65	0.66														
105	0.41	0.52	0.61	0.66	0.67														
110	0.45	0.52	0.59	0.63	0.64														
115	0.48	0.54	0.59	0.62	0.63														
120	0.54	0.58	0.63	0.65	0.65														
125	0.63	0.66	0.70	0.71	0.69														
130	0.71	0.74	0.77	0.80	0.75														
135	0.76	0.77	0.80	0.82	0.77														
140	0.81	0.80	0.80	0.80	0.75														
145	0.85	0.82	0.80	0.79	0.73														
150	0.88	0.85	0.82	0.80	0.73														
155	0.91	0.88	0.84	0.82	0.74														
160	0.93	0.90	0.86	0.83	0.75														
165	0.89	0.88	0.85	0.81	0.73														
170	0.82	0.82	0.81	0.78	0.71														
175	0.78	0.79	0.77	0.74	0.67														
180	0.72	0.72	0.72	0.72	0.72														

C Range: 0 - 360DEG
 C Interval: 15.0DEG
 Test Speed: HIGH
 Temperature: 25.0DEG
 Operators: Alan Wang
 Test Date: 17 July 2021

γ Range: 0 - 180DEG
 γ Interval: 1.0DEG
 Test System: EVERFINE GO-R5000_V2 SYSTEM V2.00.442T2
 Humidity: 52.2%
 Test Distance: 2.500m [K=1.0469]
 Remarks: