



# LED SQUARE DOWNLIGHT RETROFIT KIT

► **DESIGN & OPTIONS** - LED SQUARE DOWNLIGHT RETROFIT KIT has a classic, low-profile design with a baffle trim that allows you to have a stylish look with efficient lighting. Smooth dimming capabilities ranging from 100% to 10% with modern LED dimmers allow you to control the look and feel of your space. You can choose either 3000K, 4000K or 5000K color temperature. The 120° beam angle will leave no dark spots on the surface of your floor.

► **INSTALLATION** - Easy installation with universal TP24 or E26 connectors. It has everything you need in one set. Preinstalled spring clips are the best solution for quick and easy installation. This fixture is suitable for most new construction, remodeling, and shallow recessed lighting housings. Refer to install instructions for detailed steps.

► **APPLICATION** - Install the retrofit fixture to the ceiling for bright light in your family room, bedroom, hallways, corridors, or any other common areas in your living space. It is suitable for Wet locations, making it perfect for kitchen and bathroom lighting as well. You could also use it as a complimentary light to an existing ceiling light.

► **ENERGY SAVINGS & EFFICIENCY** - Replacing an incandescent fixture with LED SQUARE DOWNLIGHT RETROFIT KIT can save you 8 times as much on your current energy costs. With a lifespan of 50,000 hours, these fixtures are made to last decades under normal operation! This fixture will save you a significant amount of money in its lifetime.

► **CERTIFICATION & WARRANTY** - Buy with confidence: ASD provides a 5-year warranty along with ETL and ENERGY STAR certifications to guarantee top quality products and safety!

Top US certifications allow participation in rebates; please check the rebate programs available in your state.

Catalog number	
Notes	
Type	



## PRODUCT LEGEND:

Family	Model	Trim	Shape	Size	Dimmable	Watts	CCT	Finish
ASD-LDLRK	1	B	S	X	X	XX	XX	XX
LED Square Downlight Retrofit Kit		Baffle	Square	4 = 4 inch 6 = 6 inch	D = Dimmable	9 = 9 W 12 = 12 W	30 = 3,000 K 40 = 4,000 K 50 = 5,000 K	WH = White

## LED SQUARE DOWNLIGHT RETROFIT KIT:

Model	Size	Watts	Voltage	Dimmable	CCT	Lumens	Dimensions (LxWxH)
ASD-LDLRK-1BS-4D930-WH	4 inch	9 W	120 V	TRIAC	3,000 K	600 lm	5" x 5" x 2"
ASD-LDLRK-1BS-4D940-WH	4 inch	9 W	120 V	TRIAC	4,000 K	600 lm	5" x 5" x 2"
ASD-LDLRK-1BS-4D950-WH	4 inch	9 W	120 V	TRIAC	5,000 K	600 lm	5" x 5" x 2"
ASD-LDLRK-1BS-6D1230-WH	6 inch	12 W	120 V	TRIAC	3,000 K	900 lm	7 3/8" x 7 3/8" x 2 3/8"
ASD-LDLRK-1BS-6D1240-WH	6 inch	12 W	120 V	TRIAC	4,000 K	950 lm	7 3/8" x 7 3/8" x 2 3/8"
ASD-LDLRK-1BS-6D1250-WH	6 inch	12 W	120 V	TRIAC	5,000 K	950 lm	7 3/8" x 7 3/8" x 2 3/8"

## ORDERING INFORMATION:

Model	UPC	Pcs. per Carton	Carton Size	Carton Weight	GTIN 14
ASD-LDLRK-1BS-4D930-WH	810050731720	12	13" x 11" x 5.9"	5.3 lb	30810050731721
ASD-LDLRK-1BS-4D940-WH	810050731737	12	13" x 11" x 5.9"	5.3 lb	30810050731738
ASD-LDLRK-1BS-4D950-WH	810050731744	12	13" x 11" x 5.9"	5.3 lb	30810050731745
ASD-LDLRK-1BS-6D1230-WH	810050731751	12	15.9" x 15.6" x 8.1"	10.4 lb	30810050731752
ASD-LDLRK-1BS-6D1240-WH	810050731768	12	15.9" x 15.6" x 8.1"	10.4 lb	30810050731769
ASD-LDLRK-1BS-6D1250-WH	810050731775	12	15.9" x 15.6" x 8.1"	10.4 lb	30810050731776

For most up-to-date spec sheets please refer to [asd-lighting.com](http://asd-lighting.com)

ASD LIGHTING CORP

E-mail: [orders@asd-lighting.com](mailto:orders@asd-lighting.com) | Web site: [www.asd-lighting.com](http://www.asd-lighting.com)





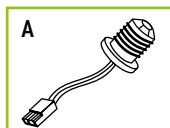
# LED SQUARE DOWNLIGHT RETROFIT KIT

## PRODUCT SPECIFICATIONS:

Construction & Materials					
Housing	Aluminum, PP				
Lens	Acrylic				
Finish Color	White				
Weight	ASD-LDLRK-1BS-4D930-WH	0.3 lb (0.1 kg)			
	ASD-LDLRK-1BS-4D940-WH				
	ASD-LDLRK-1BS-4D950-WH				
	ASD-LDLRK-1BS-6D1230-WH	0.4 lb (0.2 kg)			
	ASD-LDLRK-1BS-6D1240-WH				
	ASD-LDLRK-1BS-6D1250-WH				
Environmental System					
Work Environment	Suitable for Wet Locations				
Operating Temperature	-31°F to 104°F (-35°C to 40°C)				
L-70 Life	> 50,000 hrs				
Optical System					
Luminous Flux	ASD-LDLRK-1BS-4D930-WH	600 lm			
	ASD-LDLRK-1BS-4D940-WH				
	ASD-LDLRK-1BS-4D950-WH				
	ASD-LDLRK-1BS-6D1230-WH	900 lm			
	ASD-LDLRK-1BS-6D1240-WH				
	ASD-LDLRK-1BS-6D1250-WH				
Color Temperature	3,000 K; 4,000 K; 5,000 K				
CRI	> 90				
Electrical System					
Input Voltage	120 V				
Max input current	ASD-LDLRK-1BS-4D930-WH	0.09 A			
	ASD-LDLRK-1BS-4D940-WH				
	ASD-LDLRK-1BS-4D950-WH				
	ASD-LDLRK-1BS-6D1230-WH	0.12 A			
	ASD-LDLRK-1BS-6D1240-WH				
	ASD-LDLRK-1BS-6D1250-WH				
Inrush current (Action time)	0.2 A (0.01 S)				
AC input range	min 100 V max 135 V				
Off State Power	0 W				
Power Consumption	ASD-LDLRK-1BS-4D930-WH	9 W			
	ASD-LDLRK-1BS-4D940-WH				
	ASD-LDLRK-1BS-4D950-WH				
	ASD-LDLRK-1BS-6D1230-WH	12 W			
	ASD-LDLRK-1BS-6D1240-WH				
	ASD-LDLRK-1BS-6D1250-WH				
Power Factor	> 0.9				
Output voltage	132 V				
LED Driver Class	DOB				
Dimming range					
10-100%					
Dimming compatible controls					
Brand	Lutron		Leviton		
Models	DVCL-153P-WH	CT-603PG	S-600P	6672	6633-P
	MACL-153M-WH	S-603P	DV-600P	1F4205	1E1205
	DVLV-603P-IV	DVW-603PGH-WH		6631	6674
	CTCL-153PDH	SLV-600P-WH		0B33K1	
	<b>Regular and Voluntary Certifications</b>				
5-year limited warranty		cETLus certified 4008281		Energy Star listed	

## PACKAGE CONTENTS:

Description	Q-ty
LED Square Downlight Retrofit Kit	1
Adapter TP24-E26 (A)	1
Box	1
Cut sheet	2



## INSTALLATION GUIDE

### IMPORTANT SAFETY INFORMATION:

Please read all the instructions below before installation.

- ▶ Make sure that the supply voltage corresponds to the rated product voltage.
- ▶ The product must be installed by a qualified electrician in accordance with the National Electrical Code and corresponding local codes.
- ▶ If the product is damaged, do not use it.

### ⚠ WARNING

**RISK OF PERSONAL INJURY – READ and follow all WARNINGS and installation instructions.**

Keep or give to the owner for future reference.

**Risk of cuts:** Wear gloves to prevent cuts or abrasions when removing from carton, handling, installing, and maintaining this product.

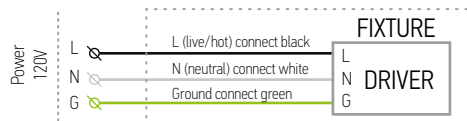
**Risk of electric shock:** This product must be installed in accordance with the applicable installation code by a person familiar with the construction and operation of the product and the hazards involved.

**Risk of Fire:** Minimum 194°F supply conductors. Consult a qualified electrician to ensure correct branch circuit conductor.

ASD® assumes no responsibility for claims arising out of improper or careless installation or handling of this product.

For recessed installation: Access above ceiling required. Inherently protected. Vapor barrier must be suitable for 194°F.

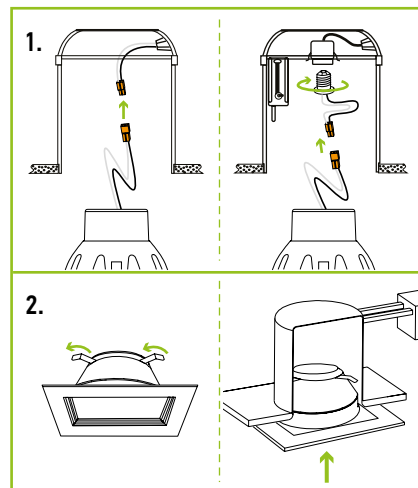
### ELECTRICAL SCHEMATIC DIAGRAM:



### INSTALLATION STEPS:

1. Turn off the main power and remove the existing trim and bulb from the Can. Use one of the options to connect the terminals.

2. Adjust springs to open position. Carefully route wires into the Can and gently push fixture up into the Can until sealed.



For most up-to-date spec sheets please refer to [asd-lighting.com](http://asd-lighting.com)