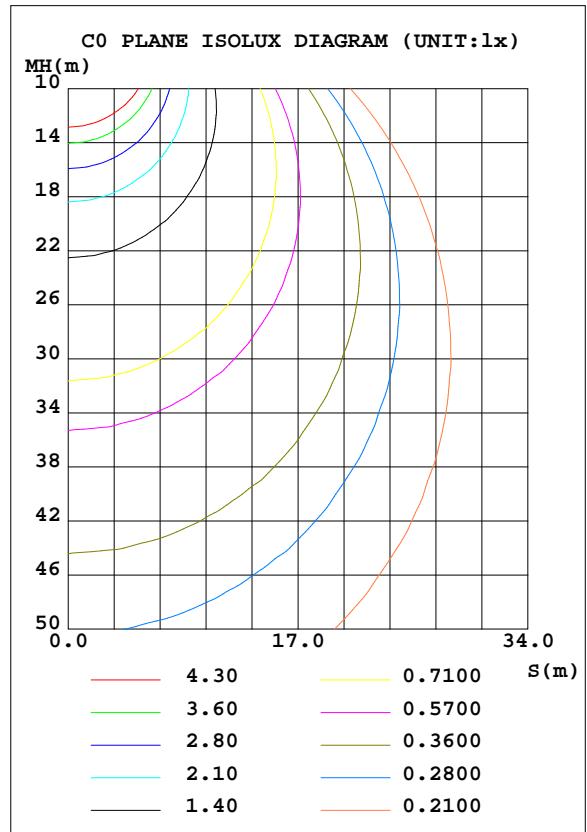
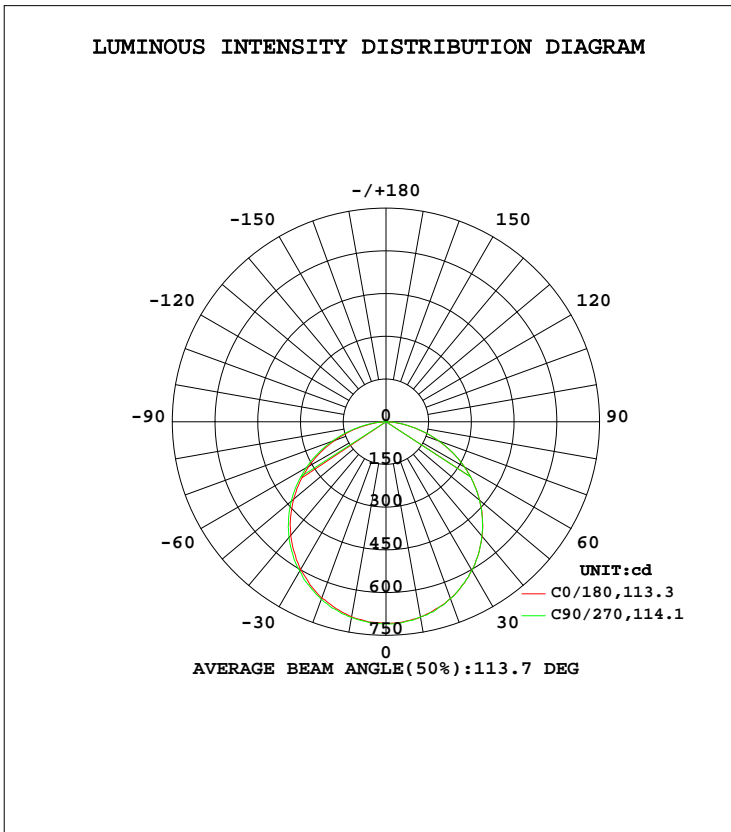


LUMINAIRE PHOTOMETRIC TEST REPORT

Test:U:120.05V I:0.1834A P:20.720W PF:0.9411 Freq:60.00Hz Lamp Flux:2045.53x1 lm		
NAME: ASD-MPR-MV-12D24WH 5000K	TYPE: N/A	WEIGHT: N/A
SPEC.:LED Luminaires	DIM.: N/A	SERIAL No.: N/A
MFR.: ASD Lighting Corp	SUR.: N/A	Shielding Angle: N/A

DATA OF LAMP		PHOTOMETRIC DATA			
MODEL	ASD-MPR-MV-12D24WH 5000K	Imax(cd)	711.6	S/MH(C0/180)	1.26
NOMINAL POWER(W)	24W	LOR(%)	100.0	S/MH(C90/270)	1.26
RATED VOLTAGE(V)	120V	TOTAL FLUX(lm)	2045.5	η UP, DN(C0-180)	0.1,50.1
NOMINAL FLUX(lm)	2045.53	CIE CLASS	DIRECT	η UP, DN(C180-360)	0.0,49.8
LAMPS INSIDE	1	η up(%)	0.1	CIBSE SHR NOM	1.25
TEST VOLTAGE(V)	120V	η down(%)	99.9	CIBSE SHR MAX	1.35



C Range: 0 - 360DEG
 C Interval: 22.5DEG
 Test Speed: HIGH
 Temperature:25.1DEG
 Operators:Hill
 Test Date:2024-08-05

γ Range: 0 - 180DEG
 γ Interval: 1.0DEG
 Test System:EVERFINE GO-R5000_V2 SYSTEM V2.00.446
 Humidity:46%
 Test Distance:2.519m [K=1.0000]
 Remarks:

ZONAL FLUX DIAGRAM

ZONAL FLUX DIAGRAM:

γ	C0	C45	C90	C135	C180	C225	C270	C315	γ	Φ zone	Φ total	%lum, lamp
10	695.4	696.7	697.9	697.0	696.1	698.0	697.1	695.0	0- 10	67.08	67.08	3.28,3.28
20	659.7	662.3	663.1	661.9	661.0	658.9	660.9	657.0	10- 20	192.4	259.5	12.7,12.7
30	599.5	604.7	605.2	604.7	602.6	601.8	602.4	599.1	20- 30	292.4	551.9	27,27
40	520.2	524.9	529.9	525.0	525.3	524.4	524.4	521.7	30- 40	354.1	905.9	44.3,44.3
50	423.3	428.6	434.3	429.5	429.7	428.0	429.0	426.9	40- 50	369.2	1275	62.3,62.3
60	312.3	318.4	323.8	318.6	318.6	316.8	318.4	316.3	50- 60	335.0	1610	78.7,78.7
70	190.9	196.7	202.3	197.7	197.2	191.1	197.9	196.1	60- 70	255.1	1865	91.2,91.2
80	68.89	77.81	82.01	78.05	77.22	74.67	78.84	77.38	70- 80	142.8	2008	98.2,98.2
90	0.1671	0.2077	2.848	0.2463	0.2596	0.0372	0.0360	0.0368	80- 90	34.84	2043	99.9,99.9
100	0.2020	0.2151	0.2189	0.2201	0.0701	0.0924	0.0896	0.0897	90-100	0.1411	2043	99.9,99.9
110	0.2622	0.2777	0.2875	0.2934	0.1341	0.1668	0.1651	0.1563	100-110	0.1913	2043	99.9,99.9
120	0.3475	0.3760	0.3978	0.4024	0.2029	0.2394	0.2418	0.2324	110-120	0.2540	2043	99.9,99.9
130	0.5280	0.5555	0.6000	0.5896	0.2913	0.2929	0.3336	0.3167	120-130	0.3290	2044	99.9,99.9
140	0.8362	0.9191	0.9771	0.8952	0.3856	0.3736	0.4436	0.3847	130-140	0.4131	2044	99.9,99.9
150	1.152	1.270	1.333	1.279	0.5057	0.5448	0.5213	0.5254	140-150	0.4791	2045	100,100
160	1.425	1.419	1.510	1.439	0.7325	0.7231	0.6360	0.6533	150-160	0.4516	2045	100,100
170	1.343	1.349	1.417	1.461	0.9528	0.8923	0.8786	0.8351	160-170	0.3122	2045	100,100
180	1.163	1.101	0.9676	1.139	1.164	1.102	0.9680	1.138	170-180	0.1076	2046	100,100
DEG	LUMINOUS INTENSITY:cd									UNIT:lm		

Conical surface Flux(90deg): 1091.7 lm

%lum = 53.4%
 %lamp = 53.4%

Conical surface Flux(120deg): 1610.2 lm

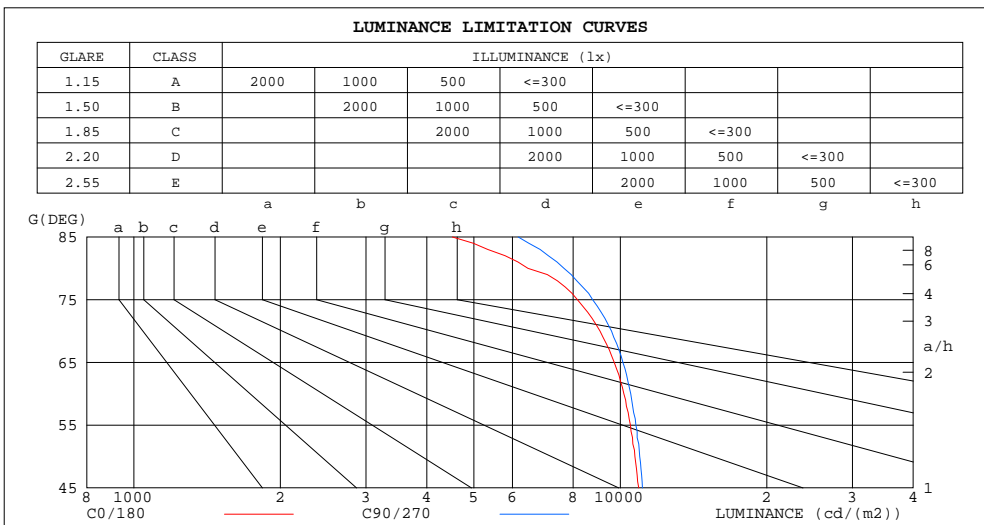
%lum = 78.7%
 %lamp = 78.7%

C Range: 0 - 360DEG
 C Interval: 22.5DEG
 Test Speed: HIGH
 Temperature:25.1DEG
 Operators:Hill
 Test Date:2024-08-05

γ Range: 0 - 180DEG
 γ Interval: 1.0DEG
 Test System:EVERFINE GO-R5000_V2 SYSTEM V2.00.446
 Humidity:46%
 Test Distance:2.519m [K=1.0000]
 Remarks:

LUMINANCE LIMITATION CURVES

Test:U:120.05V I:0.1834A P:20.720W PF:0.9411 Freq:60.00Hz Lamp Flux:2045.53x1 lm		
NAME: ASD-MPR-MV-12D24WH 5000K	TYPE: N/A	WEIGHT: N/A
SPEC.:LED Luminaires	DIM.: N/A	SERIAL No.: N/A
MFR.: ASD Lighting Corp	SUR.: N/A	Shielding Angle: N/A



LUMINANCE cd/(m2)		
G(DEG)	C0/180	C90/270
85	4518	6166
80	6457	7662
75	8163	8773
70	9086	9596
65	9720	10125
60	10167	10508
55	10493	10765
50	10718	10961
45	10913	11104

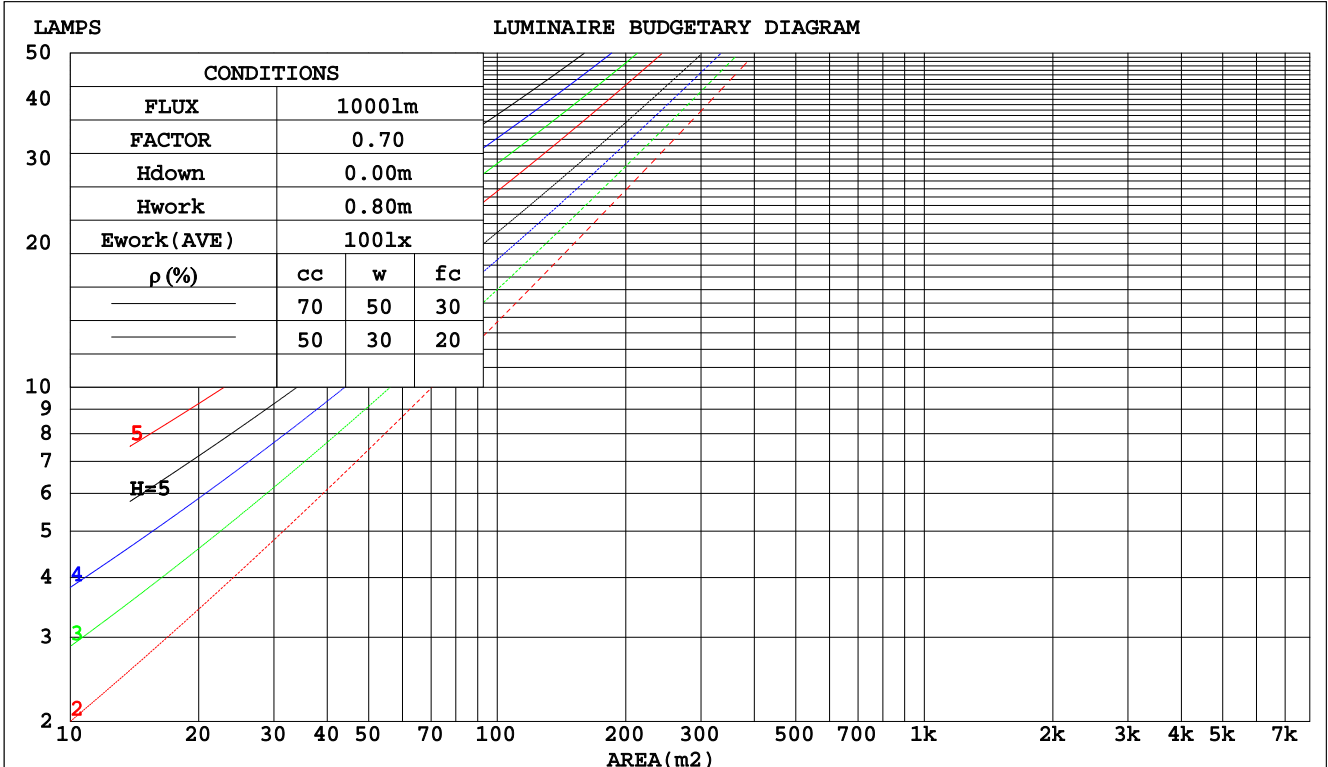
C Range: 0 - 360DEG
 C Interval: 22.5DEG
 Test Speed: HIGH
 Temperature:25.1DEG
 Operators:Hill
 Test Date:2024-08-05

γ Range: 0 - 180DEG
 γ Interval: 1.0DEG
 Test System:EVERFINE GO-R5000_V2 SYSTEM V2.00.446
 Humidity:46%
 Test Distance:2.519m [K=1.0000]
 Remarks:

CU AND LUMINAIRE BUDGETARY ESTIMATE DIAGRAM

Test:U:120.05V I:0.1834A P:20.720W PF:0.9411 Freq:60.00Hz Lamp Flux:2045.53x1 lm		
NAME: ASD-MPR-MV-12D24WH 5000K	TYPE: N/A	WEIGHT: N/A
SPEC.:LED Luminaires	DIM.: N/A	SERIAL No.: N/A
MFR.: ASD Lighting Corp	SUR.: N/A	Shielding Angle: N/A

pcc	80%			70%			50%			30%			10%			0
	50%	30%	10%	50%	30%	10%	50%	30%	10%	50%	30%	10%	50%	30%	10%	0
pw																0
pfc	20%			20%			20%			20%			20%			0
RCR	RCR:Room Cavity Ratio Coefficients of Utilization(CU)															
0.0	1.19	1.19	1.19	1.16	1.16	1.16	1.11	1.11	1.11	1.06	1.06	1.06	1.02	1.02	1.02	.00
1.0	1.04	.00	.96	1.02	.98	.94	.97	.94	.91	.93	.91	.88	.90	.88	.86	.84
2.0	.90	.84	.78	.89	.82	.77	.85	.80	.75	.82	.77	.73	.79	.75	.72	.69
3.0	.79	.71	.65	.78	.70	.64	.75	.68	.63	.72	.66	.62	.69	.65	.61	.58
4.0	.70	.61	.55	.69	.61	.54	.66	.59	.53	.64	.58	.53	.62	.56	.52	.50
5.0	.63	.54	.47	.61	.53	.47	.59	.52	.46	.57	.51	.46	.55	.50	.45	.43
6.0	.56	.47	.41	.55	.47	.41	.54	.46	.40	.52	.45	.40	.50	.44	.40	.37
7.0	.51	.42	.36	.50	.42	.36	.49	.41	.36	.47	.40	.35	.46	.40	.35	.33
8.0	.47	.38	.32	.46	.38	.32	.44	.37	.32	.43	.36	.32	.42	.36	.31	.29
9.0	.43	.34	.29	.42	.34	.29	.41	.34	.29	.40	.33	.28	.39	.33	.28	.26
10.0	.39	.31	.26	.39	.31	.26	.38	.31	.26	.37	.30	.26	.36	.30	.26	.24



C Range: 0 - 360DEG
 C Interval: 22.5DEG
 Test Speed: HIGH
 Temperature:25.1DEG
 Operators:Hill
 Test Date:2024-08-05

γ Range: 0 - 180DEG
 γ Interval: 1.0DEG
 Test System:EVERFINE GO-R5000_V2 SYSTEM V2.00.446
 Humidity:46%
 Test Distance:2.519m [K=1.0000]
 Remarks:

WEC AND CCEC

Test:U:120.05V I:0.1834A P:20.720W PF:0.9411 Freq:60.00Hz Lamp Flux:2045.53x1 lm		
NAME:ASD-MPR-MV-12D24WH 5000K	TYPE: N/A	WEIGHT: N/A
SPEC.:LED Luminaires	DIM.: N/A	SERIAL No.: N/A
MFR.: ASD Lighting Corp	SUR.: N/A	Shielding Angle: N/A

ρcc	80%			70%			50%			30%			10%			0
ρw	50%	30%	10%	50%	30%	10%	50%	30%	10%	50%	30%	10%	50%	30%	10%	0
ρfc	20%			20%			20%			20%			20%			0
RCR	RCR:Room Cavity Ratio						Wall Exitance Coefficients(WEC)									
0.0																
1.0	.309	.175	.056	.301	.172	.055	.288	.165	.053	.276	.159	.051	.265	.153	.049	
2.0	.291	.160	.049	.285	.157	.048	.273	.152	.047	.263	.147	.046	.253	.143	.045	
3.0	.270	.144	.043	.265	.142	.043	.254	.138	.042	.244	.134	.041	.236	.130	.040	
4.0	.249	.130	.038	.245	.128	.038	.235	.125	.037	.227	.122	.037	.219	.119	.036	
5.0	.231	.118	.034	.226	.116	.034	.218	.114	.033	.210	.111	.033	.203	.109	.033	
6.0	.214	.107	.031	.210	.106	.031	.203	.104	.030	.196	.102	.030	.190	.100	.030	
7.0	.199	.098	.028	.196	.097	.028	.189	.096	.028	.183	.094	.027	.177	.092	.027	
8.0	.186	.091	.026	.183	.090	.025	.177	.088	.025	.172	.087	.025	.166	.085	.025	
9.0	.174	.084	.024	.172	.084	.023	.166	.082	.023	.161	.081	.023	.157	.080	.023	
10.0	.164	.079	.022	.161	.078	.022	.157	.077	.022	.152	.076	.021	.148	.074	.021	

ρcc	80%			70%			50%			30%			10%			0
ρw	50%	30%	10%	50%	30%	10%	50%	30%	10%	50%	30%	10%	50%	30%	10%	0
ρfc	20%			20%			20%			20%			20%			0
RCR	RCR:Room Cavity Ratio						Ceiling Cavity Exitance Coefficients(CCEC)									
0.0	.191	.191	.191	.164	.164	.164	.112	.112	.112	.064	.064	.064	.021	.021	.021	
1.0	.181	.157	.135	.155	.135	.117	.106	.093	.081	.061	.054	.047	.020	.017	.015	
2.0	.173	.133	.099	.148	.114	.086	.102	.079	.060	.059	.046	.035	.019	.015	.011	
3.0	.166	.115	.075	.142	.099	.065	.097	.069	.046	.056	.040	.027	.018	.013	.009	
4.0	.158	.102	.059	.136	.088	.052	.093	.061	.036	.054	.036	.021	.017	.012	.007	
5.0	.151	.092	.048	.129	.079	.042	.089	.055	.030	.052	.033	.018	.017	.011	.006	
6.0	.143	.083	.040	.123	.072	.035	.085	.050	.025	.049	.030	.015	.016	.010	.005	
7.0	.137	.076	.034	.117	.066	.030	.081	.046	.021	.047	.027	.013	.015	.009	.004	
8.0	.130	.071	.030	.112	.061	.026	.077	.043	.018	.045	.025	.011	.015	.008	.004	
9.0	.124	.066	.026	.107	.057	.023	.074	.040	.016	.043	.024	.010	.014	.008	.003	
10.0	.118	.061	.023	.102	.053	.020	.071	.037	.015	.041	.022	.009	.013	.007	.003	

C Range: 0 - 360DEG
 C Interval: 22.5DEG
 Test Speed: HIGH
 Temperature:25.1DEG
 Operators:Hill
 Test Date:2024-08-05

γ Range: 0 - 180DEG
 γ Interval: 1.0DEG
 Test System:EVERFINE GO-R5000_V2 SYSTEM V2.00.446
 Humidity:46%
 Test Distance:2.519m [K=1.0000]
 Remarks:

UGR(Unified Glare Rating) Table

Test:U:120.05V I:0.1834A P:20.720W PF:0.9411 Freq:60.00Hz Lamp Flux:2045.53x1 lm		
NAME:ASD-MPR-MV-12D24WH 5000K	TYPE: N/A	WEIGHT: N/A
SPEC.:LED Luminaires	DIM.: N/A	SERIAL No.: N/A
MFR.: ASD Lighting Corp	SUR.: N/A	Shielding Angle: N/A

ceiling/cavity	0.7	0.7	0.5	0.5	0.3	0.7	0.7	0.5	0.5	0.3
walls	0.5	0.3	0.5	0.3	0.3	0.5	0.3	0.5	0.3	0.3
working plane	0.2	0.2	0.2	0.2	0.2	0.2	0.2	0.2	0.2	0.2
Room dimensions	Viewed crosswise					Viewed endwise				
x = 2H y = 2H	18.6	20.1	18.9	20.3	20.5	18.7	20.2	19.0	20.4	20.6
3H	20.1	21.5	20.4	21.7	21.9	20.2	21.7	20.5	21.9	22.1
4H	20.6	22.0	20.9	22.2	22.5	20.8	22.2	21.2	22.4	22.7
6H	21.0	22.2	21.3	22.5	22.8	21.3	22.5	21.6	22.8	23.1
8H	21.0	22.3	21.4	22.5	22.8	21.4	22.6	21.7	22.9	23.2
12H	21.1	22.2	21.4	22.5	22.8	21.4	22.6	21.8	22.9	23.2
4H 2H	19.2	20.5	19.5	20.8	21.1	19.3	20.6	19.6	20.9	21.2
3H	20.9	22.0	21.2	22.3	22.6	21.0	22.2	21.4	22.5	22.8
4H	21.5	22.6	21.9	22.9	23.3	21.7	22.8	22.1	23.1	23.5
6H	22.0	23.0	22.4	23.3	23.7	22.3	23.2	22.7	23.6	23.9
8H	22.1	23.0	22.5	23.4	23.8	22.4	23.3	22.9	23.7	24.1
12H	22.2	23.0	22.6	23.4	23.8	22.5	23.4	23.0	23.7	24.2
8H 4H	21.8	22.7	22.2	23.1	23.4	22.0	22.9	22.4	23.2	23.6
6H	22.4	23.1	22.8	23.5	24.0	22.6	23.4	23.1	23.8	24.2
8H	22.6	23.2	23.0	23.6	24.1	22.9	23.5	23.4	24.0	24.4
12H	22.7	23.2	23.2	23.7	24.2	23.1	23.6	23.5	24.1	24.6
12H 4H	21.8	22.6	22.2	23.0	23.4	22.0	22.8	22.4	23.2	23.6
6H	22.4	23.1	22.9	23.5	24.0	22.7	23.3	23.2	23.8	24.2
8H	22.6	23.2	23.1	23.7	24.1	23.0	23.5	23.5	24.0	24.5
Variations with the observer position at spacings(CIE Pub.117):										
S = 1.0H	+ 0.2 / - 0.2					+ 0.2 / - 0.2				
1.5H	+ 0.2 / - 0.3					+ 0.2 / - 0.3				
2.0H	+ 0.2 / - 0.3					+ 0.2 / - 0.3				

CIE Pub.117, 2046 lm Total Lamp Luminous Flux Correct (8log(F/F0) = 2.5)
Area: 0.061544 m2

C Range: 0 - 360DEG
C Interval: 22.5DEG
Test Speed: HIGH
Temperature:25.1DEG
Operators:Hill
Test Date:2024-08-05

γ Range: 0 - 180DEG
γ Interval: 1.0DEG
Test System:EVERFINE GO-R5000_V2 SYSTEM V2.00.446
Humidity:46%
Test Distance:2.519m [K=1.0000]
Remarks:

UTILIZATION FACTORS TABLE

Test:U:120.05V I:0.1834A P:20.720W PF:0.9411 Freq:60.00Hz Lamp Flux:2045.53x1 lm		
NAME:ASD-MPR-MV-12D24WH 5000K	TYPE: N/A	WEIGHT: N/A
SPEC.:LED Luminaires	DIM.: N/A	SERIAL No.: N/A
MFR.: ASD Lighting Corp	SUR.: N/A	Shielding Angle: N/A

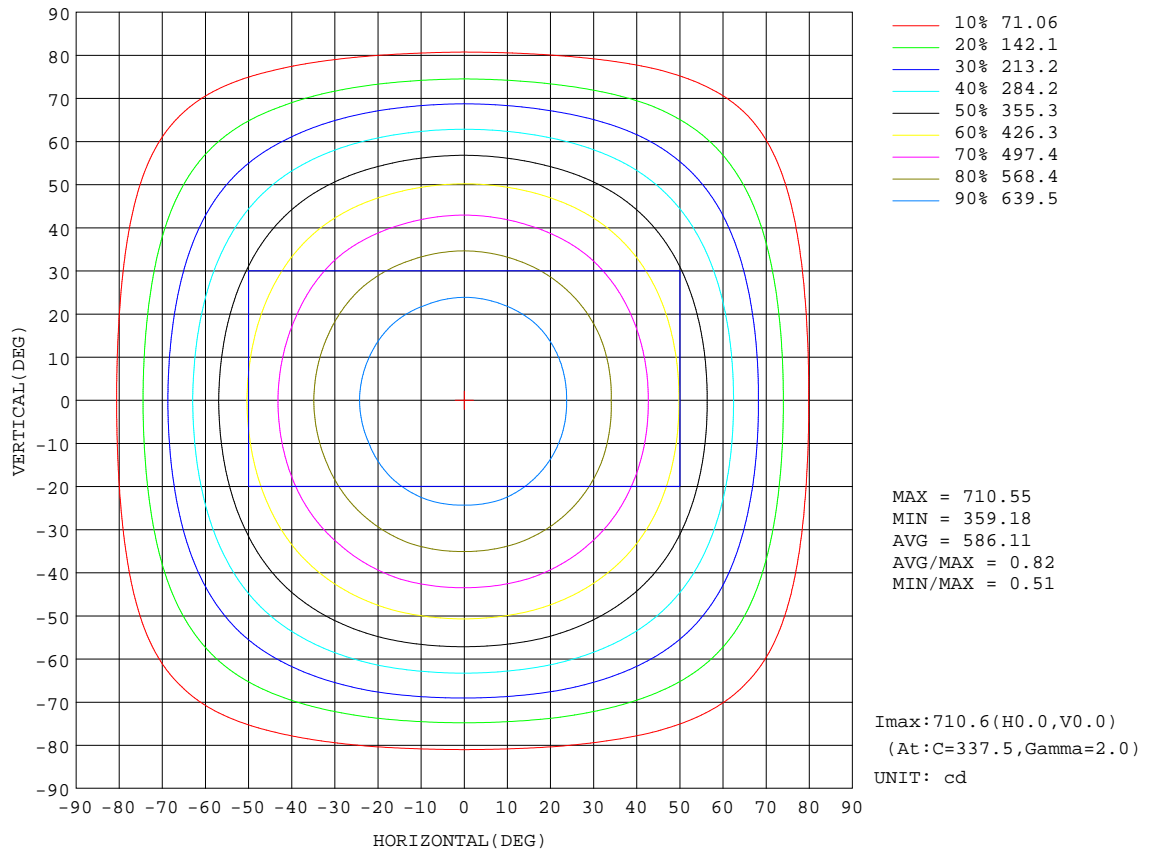
REFLECTANCE										
Ceiling	0.8	0.8	0.8	0.7	0.7	0.7	0.5	0.5	0.5	0
Walls	0.7	0.5	0.3	0.7	0.5	0.3	0.7	0.5	0.3	0
Working plane	0.2	0.2	0.2	0.2	0.2	0.2	0.2	0.2	0.2	0
ROOM INDEX	UTILIZATION FACTORS(PERCENT) $k(RI) \times RCR = 5$									
k = 0.60	57	46	39	57	45	39	55	45	38	32
0.80	67	56	48	66	55	48	65	54	48	41
1.00	76	65	57	75	64	57	72	66	57	49
1.25	83	72	65	82	72	65	79	70	64	57
1.50	88	78	71	86	77	71	83	75	69	62
2.00	95	86	80	93	85	79	90	83	78	70
2.50	99	91	85	97	90	84	93	87	82	74
3.00	102	95	90	100	94	89	96	91	87	78
4.00	106	101	96	104	99	95	100	95	92	83
5.00	109	104	100	106	102	98	102	98	95	86
ROOM INDEX	UF(total)									Direct
According to DIN EN 13032-2 2004			Suspended				SHRNOM = 1.25			

C Range: 0 - 360DEG
 C Interval: 22.5DEG
 Test Speed: HIGH
 Temperature:25.1DEG
 Operators:Hill
 Test Date:2024-08-05

γ Range: 0 - 180DEG
 γ Interval: 1.0DEG
 Test System:EVERFINE GO-R5000_V2 SYSTEM V2.00.446
 Humidity:46%
 Test Distance:2.519m [K=1.0000]
 Remarks:

ISOCANDELA DIAGRAM

Test:U:120.05V I:0.1834A P:20.720W PF:0.9411 Freq:60.00Hz Lamp Flux:2045.53x1 lm		
NAME: ASD-MPR-MV-12D24WH 5000K	TYPE: N/A	WEIGHT: N/A
SPEC.:LED Luminaires	DIM.: N/A	SERIAL No.: N/A
MFR.: ASD Lighting Corp	SUR.: N/A	Shielding Angle: N/A



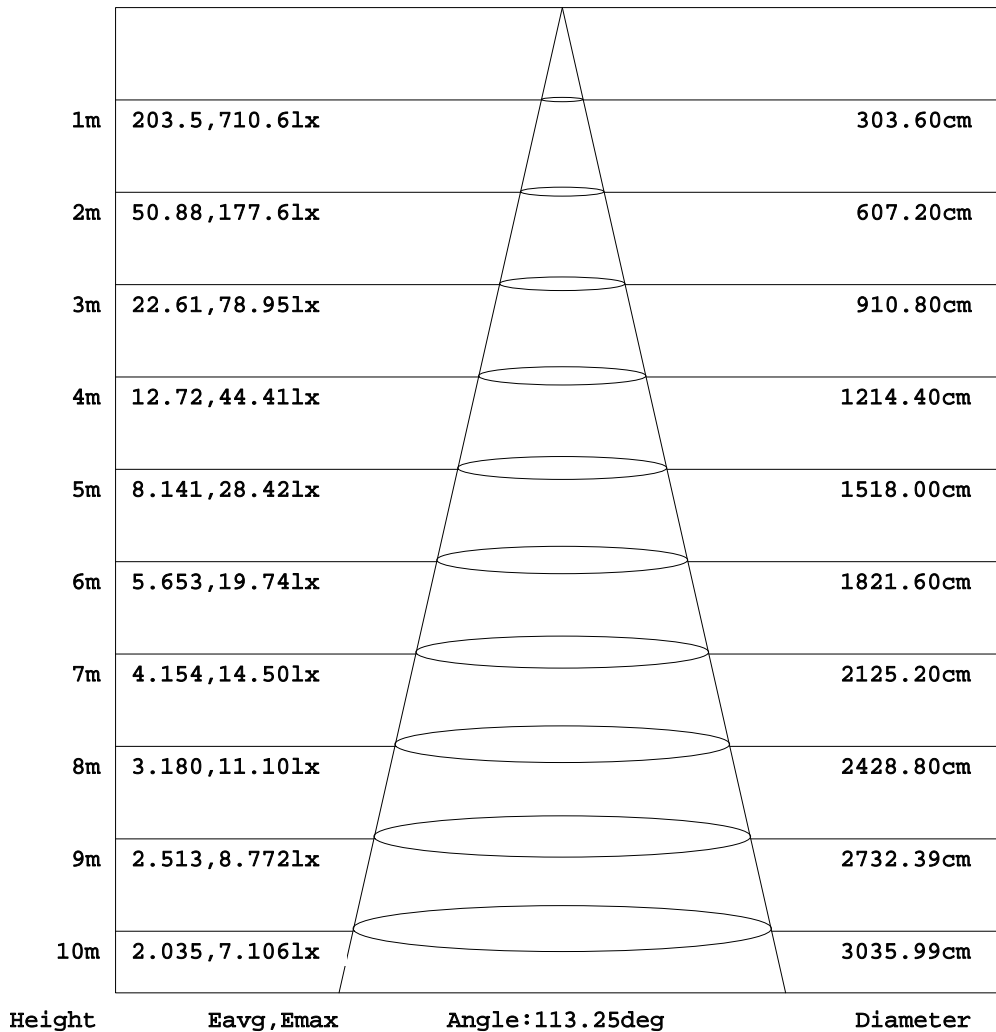
C Range: 0 - 360DEG
 C Interval: 22.5DEG
 Test Speed: HIGH
 Temperature: 25.1DEG
 Operators: Hill
 Test Date: 2024-08-05

γ Range: 0 - 180DEG
 γ Interval: 1.0DEG
 Test System: EVERFINE GO-R5000_V2 SYSTEM V2.00.446
 Humidity: 46%
 Test Distance: 2.519m [K=1.0000]
 Remarks:

AAI Figure

Test:U:120.05V I:0.1834A P:20.720W PF:0.9411 Freq:60.00Hz Lamp Flux:2045.53x1 lm		
NAME:ASD-MPR-MV-12D24WH 5000K	TYPE: N/A	WEIGHT: N/A
SPEC.:LED Luminaires	DIM.: N/A	SERIAL No.: N/A
MFR.: ASD Lighting Corp	SUR.: N/A	Shielding Angle: N/A

Flux out:1516 lm



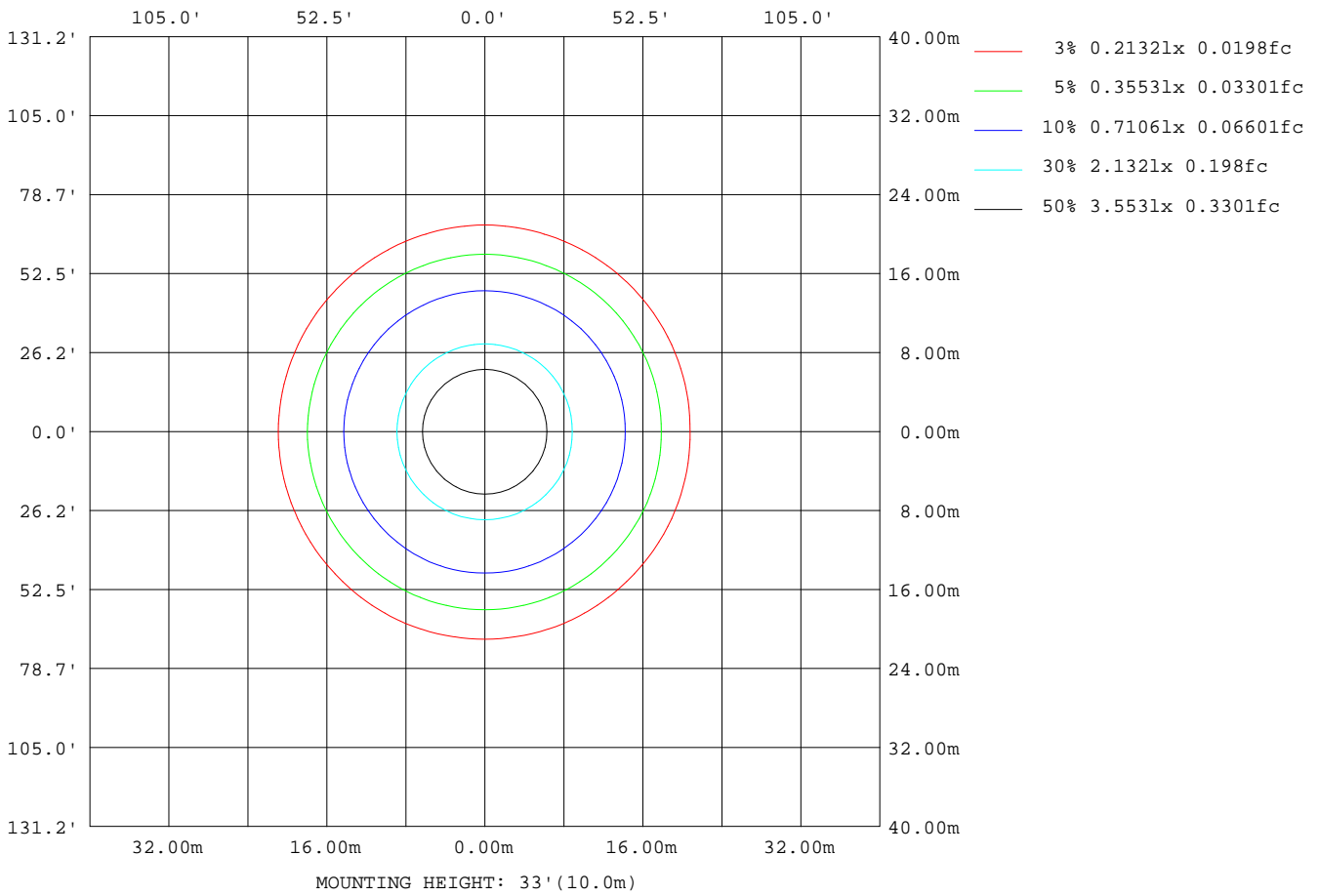
Note:The Curves indicate the illuminated area and the average illumination when the luminaire is at different distance.

C Range: 0 - 360DEG
C Interval: 22.5DEG
Test Speed: HIGH
Temperature:25.1DEG
Operators:Hill
Test Date:2024-08-05

γ Range: 0 - 180DEG
γ Interval: 1.0DEG
Test System:EVERFINE GO-R5000_V2 SYSTEM V2.00.446
Humidity:46%
Test Distance:2.519m [K=1.0000]
Remarks:

ISOLUX DIAGRAM

Test:U:120.05V I:0.1834A P:20.720W PF:0.9411 Freq:60.00Hz Lamp Flux:2045.53x1 lm		
NAME: ASD-MPR-MV-12D24WH 5000K	TYPE: N/A	WEIGHT: N/A
SPEC.:LED Luminaires	DIM.: N/A	SERIAL No.: N/A
MFR.: ASD Lighting Corp	SUR.: N/A	Shielding Angle: N/A



C Range: 0 - 360DEG
 C Interval: 22.5DEG
 Test Speed: HIGH
 Temperature:25.1DEG
 Operators:Hill
 Test Date:2024-08-05

γ Range: 0 - 180DEG
 γ Interval: 1.0DEG
 Test System:EVERFINE GO-R5000_V2 SYSTEM V2.00.446
 Humidity:46%
 Test Distance:2.519m [K=1.0000]
 Remarks:

LED Avg.L Report

Test:U:120.05V I:0.1834A P:20.720W PF:0.9411 Freq:60.00Hz Lamp Flux:2045.53x1 lm		
NAME: ASD-MPR-MV-12D24WH 5000K	TYPE: N/A	WEIGHT: N/A
SPEC.: LED Luminaires	DIM.: N/A	SERIAL No.: N/A
MFR.: ASD Lighting Corp	SUR.: N/A	Shielding Angle: N/A

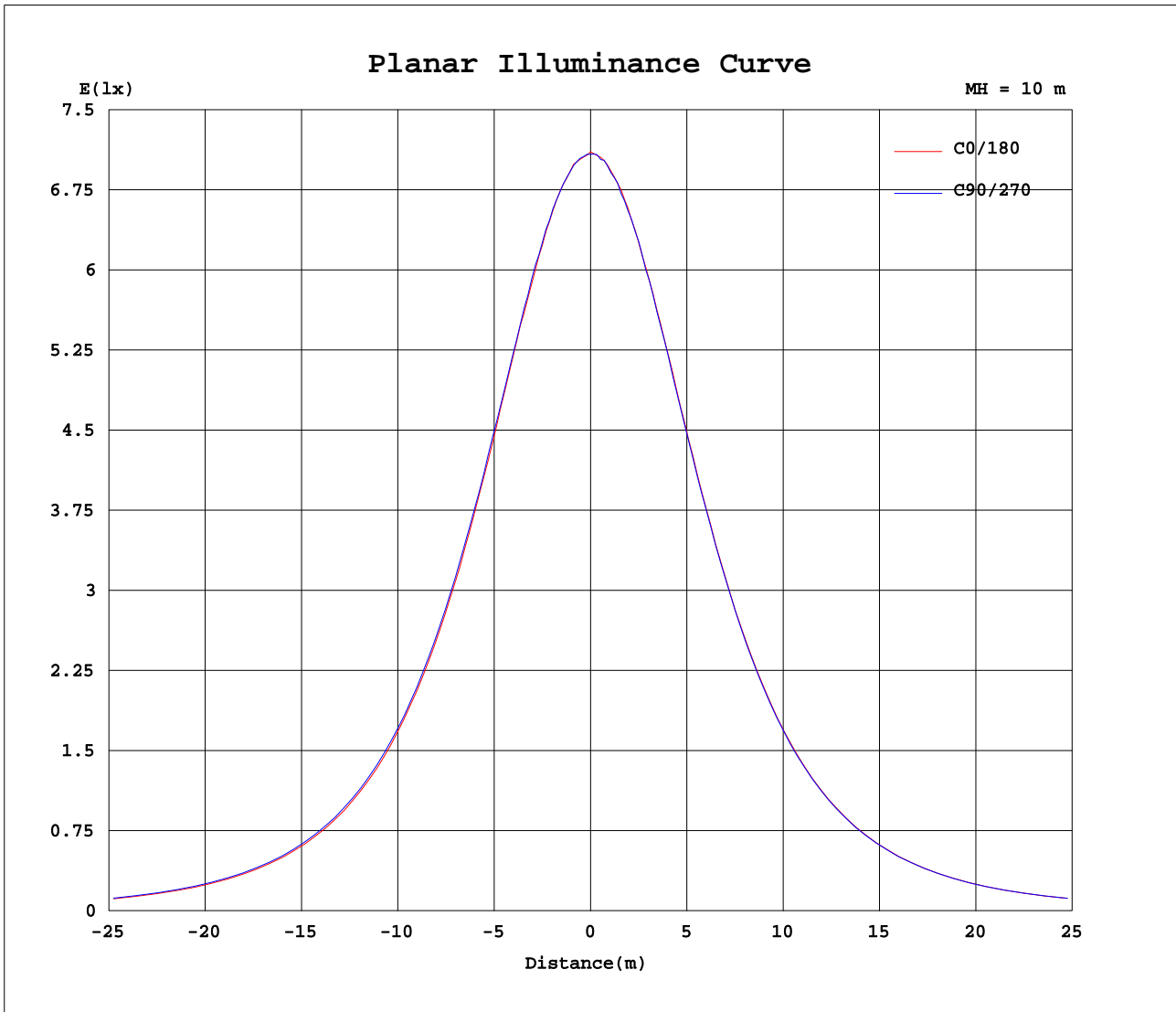
AvgL	cd/m2
L_0~180(65)av	9822
L_0~180(75)av	8327
L_0~180(85)av	4977
L_90~270(65)av	10053
L_90~270(75)av	8666
L_90~270(85)av	6003
L_45(65)av	9883
L_45(75)av	8397
L_45(85)av	5424

Standard: GB/T 29293-2012

C Range: 0 - 360DEG
 C Interval: 22.5DEG
 Test Speed: HIGH
 Temperature:25.1DEG
 Operators:Hill
 Test Date:2024-08-05

γ Range: 0 - 180DEG
 γ Interval: 1.0DEG
 Test System:EVERFINE GO-R5000_V2 SYSTEM V2.00.446
 Humidity:46%
 Test Distance:2.519m [K=1.0000]
 Remarks:

Planar Illuminance Curve



C Range: 0 - 360DEG
 C Interval: 22.5DEG
 Test Speed: HIGH
 Temperature: 25.1DEG
 Operators: Hill
 Test Date: 2024-08-05

γ Range: 0 - 180DEG
 γ Interval: 1.0DEG
 Test System: EVERFINE GO-R5000_V2 SYSTEM V2.00.446
 Humidity: 46%
 Test Distance: 2.519m [K=1.0000]
 Remarks:

LUMINOUS DISTRIBUTION INTENSITY DATA

Test:U:120.05V I:0.1834A P:20.720W PF:0.9411 Freq:60.00Hz Lamp Flux:2045.53x1 lm		
NAME:ASD-MPR-MV-12D24WH 5000K	TYPE: N/A	WEIGHT: N/A
SPEC.: LED Luminaires	DIM.: N/A	SERIAL No.: N/A
MFR.: ASD Lighting Corp	SUR.: N/A	Shielding Angle: N/A

Table--1

UNIT: cd

C(DEG) γ (DEG)	0	22.5	45	67.5	90	112.5	135	157.5	180	202.5	225	247.5	270	292.5	315	337.5			
0	709	709	709	709	709	709	709	709	709	709	709	709	709	709	709	709			
5	706	706	706	707	707	705	705	708	705	705	707	705	707	704	704	707			
10	695	695	697	697	698	697	697	699	696	697	698	697	697	696	695	698			
15	679	681	682	683	683	684	683	684	680	682	681	682	683	679	680	682			
20	660	660	662	662	663	661	662	662	661	661	659	660	661	659	657	662			
25	632	632	635	637	637	637	636	635	633	635	633	633	634	633	633	634			
30	599	601	605	606	605	606	605	604	603	603	602	601	602	600	599	602			
35	561	565	567	569	570	570	567	567	567	566	566	565	567	564	563	565			
40	520	523	525	529	530	529	525	526	525	523	524	523	524	522	522	523			
45	474	478	479	482	484	483	480	481	479	477	479	478	479	477	477	477			
50	423	427	429	432	434	433	429	430	430	428	428	427	429	427	427	427			
55	370	374	375	379	381	380	376	376	376	374	375	374	375	373	374	373			
60	312	316	318	322	324	323	319	319	319	315	317	317	318	317	316	316			
65	252	256	258	263	264	263	259	258	259	256	254	256	259	256	256	256			
70	191	195	197	201	202	202	198	197	197	195	191	195	198	195	196	195			
75	130	133	135	139	140	139	135	134	135	133	130	134	136	134	134	131			
80	68.9	72.2	77.8	81.1	82.0	81.1	78.0	76.1	77.2	75.6	74.7	77.0	78.8	77.6	77.4	75.0			
85	24.2	26.1	29.1	32.9	33.1	32.8	29.3	28.2	29.2	27.5	28.4	29.2	31.3	29.8	29.5	27.4			
90	0.17	0.14	0.21	0.14	2.85	0.14	0.25	0.19	0.26	0.08	0.04	0.11	0.04	0.14	0.04	0.10			
95	0.17	0.17	0.18	0.17	0.18	0.17	0.18	0.17	0.05	0.05	0.06	0.06	0.06	0.06	0.06	0.06			
100	0.20	0.20	0.22	0.22	0.22	0.22	0.22	0.20	0.07	0.08	0.09	0.10	0.09	0.10	0.09	0.08			
105	0.23	0.22	0.24	0.26	0.25	0.25	0.26	0.22	0.10	0.10	0.13	0.14	0.13	0.13	0.12	0.11			
110	0.26	0.25	0.28	0.29	0.29	0.29	0.29	0.26	0.13	0.14	0.17	0.18	0.17	0.17	0.16	0.13			
115	0.31	0.29	0.32	0.34	0.33	0.33	0.34	0.30	0.18	0.17	0.20	0.21	0.20	0.20	0.19	0.17			
120	0.35	0.35	0.38	0.41	0.40	0.39	0.40	0.35	0.20	0.21	0.24	0.26	0.24	0.23	0.23	0.20			
125	0.44	0.43	0.46	0.49	0.48	0.47	0.48	0.43	0.25	0.26	0.29	0.30	0.29	0.28	0.28	0.24			
130	0.53	0.53	0.56	0.60	0.60	0.58	0.59	0.53	0.29	0.31	0.29	0.36	0.33	0.33	0.32	0.30			
135	0.65	0.66	0.70	0.75	0.76	0.72	0.71	0.66	0.33	0.34	0.36	0.40	0.39	0.37	0.35	0.34			
140	0.84	0.83	0.92	0.96	0.98	0.93	0.90	0.82	0.39	0.37	0.37	0.45	0.44	0.42	0.38	0.37			
145	0.98	0.99	1.10	1.17	1.20	1.13	1.10	0.98	0.43	0.43	0.47	0.49	0.50	0.46	0.46	0.43			
150	1.15	1.17	1.27	1.30	1.33	1.29	1.28	1.14	0.51	0.48	0.54	0.52	0.52	0.50	0.53	0.50			
155	1.28	1.32	1.38	1.43	1.43	1.46	1.44	1.35	0.61	0.58	0.63	0.63	0.53	0.58	0.61	0.56			
160	1.42	1.43	1.42	1.44	1.51	1.55	1.44	1.43	0.73	0.63	0.72	0.73	0.64	0.62	0.65	0.63			
165	1.42	1.42	1.38	1.38	1.51	1.49	1.45	1.46	0.80	0.76	0.80	0.86	0.80	0.74	0.70	0.74			
170	1.34	1.35	1.35	1.29	1.42	1.44	1.46	1.45	0.95	0.97	0.89	0.91	0.88	0.76	0.84	0.90			
175	1.29	1.22	1.19	1.23	1.28	1.31	1.36	1.34	1.08	1.09	1.06	1.00	0.93	0.94	1.01	1.04			
180	1.16	1.17	1.10	1.05	0.97	1.00	1.14	1.14	1.16	1.17	1.10	1.06	0.97	1.00	1.14	1.14			

C Range: 0 - 360DEG
 C Interval: 22.5DEG
 Test Speed: HIGH
 Temperature:25.1DEG
 Operators:Hill
 Test Date:2024-08-05

γ Range: 0 - 180DEG
 γ Interval: 1.0DEG
 Test System:EVERFINE GO-R5000_V2 SYSTEM V2.00.446
 Humidity:46%
 Test Distance:2.519m [K=1.0000]
 Remarks: