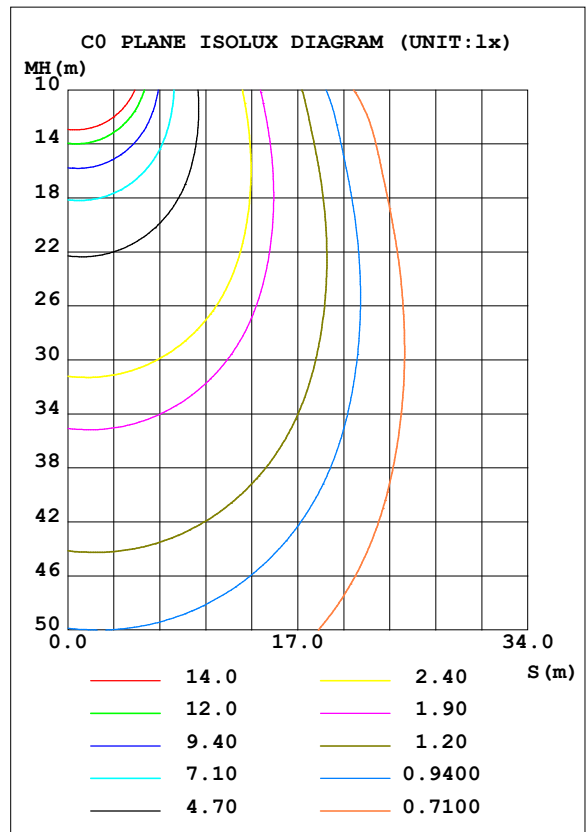
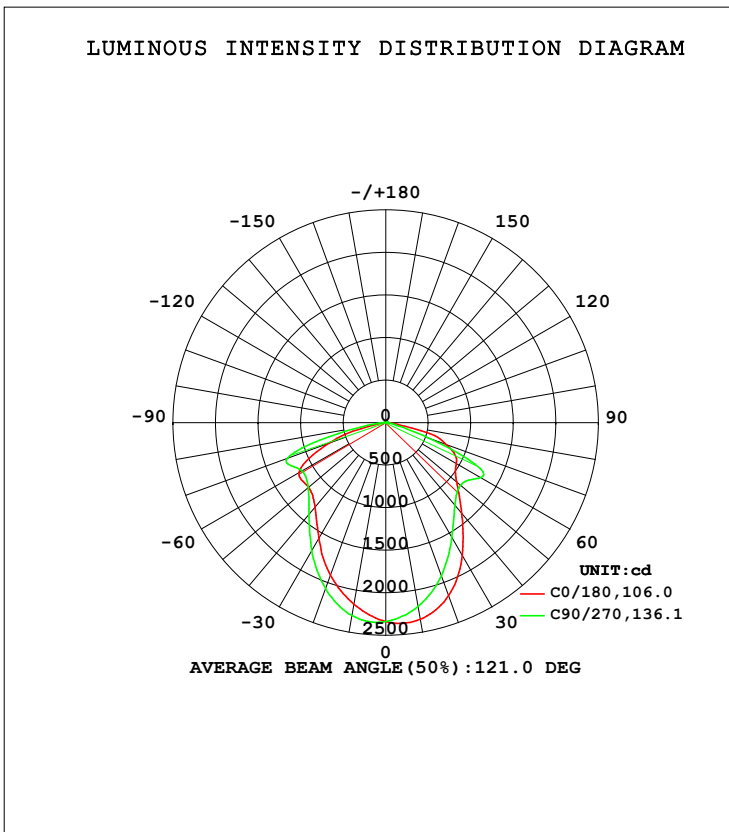


LUMINAIRE PHOTOMETRIC TEST REPORT

Test:U:121.5V I:0.3714A P:44.94W PF:0.9957 Freq:59.97Hz Lamp Flux:5760x1 lm		
NAME: ASD Lighting Corp	TYPE:	WEIGHT:
SPEC.:ASD-CAN07-45DAC-BZ-3000K	DIM.:	SERIAL No.:
MFR.: ASD Lighting Corp	SUR.:0.22*0.22m	Shielding Angle:

DATA OF LAMP		PHOTOMETRIC DATA Eff: 128,17 lm/W			
MODEL	ASD-CAN07-45DAC-BZ-3000K	Kmax (cd)	2371	S/MH (C0/180)	1.04
NOMINAL POWER (W)	45	LOR (%)	100.0	S/MH (C90/270)	1.13
RATED VOLTAGE (V)	120-277	TOTAL FLUX (lm)	6230.5	η UP, DN (C0-180)	0.5, 47.0
NOMINAL FLUX (lm)	5760	CIE CLASS	DIRECT	η UP, DN (C180-360)	0.4, 52.1
LAMPS INSIDE	1	η up (%)	0.9	CIBSE SHR NOM	1.25
TEST VOLTAGE (V)	120	η down (%)	99.1	CIBSE SHR MAX	1.30



C Range: 0 - 360DEG  
 C Interval: 45.0DEG  
 Test Speed: HIGH  
 Temperature: 28.8DEG  
 Operators: wudashuai  
 Test Date: 2021-11-04

γ Range: 0 - 180DEG  
 γ Interval: 1.0DEG  
 Test System: EVERFINE GO-2000A\_V1 SYSTEM V2.0.364  
 Humidity: 66%  
 Test Distance: 6.500m [K=1.0000]  
 Remarks:

## ZONAL FLUX DIAGRAM

## ZONAL FLUX DIAGRAM:

$\gamma$	C0	C45	C90	C135	C180	C225	C270	C315	$\gamma$	$\Phi$ zone	$\Phi$ total	%lum,lamp
10	2347	2286	2192	2155	2166	2228	2301	2351	0- 10	219.1	219.1	3.52,3.52
20	2162	2064	1913	1892	1907	1991	2074	2193	10- 20	605.9	825.0	13.2,13.2
30	1799	1677	1556	1568	1572	1674	1741	1886	20- 30	856.2	1681	27,27
40	1391	1330	1267	1324	1295	1398	1406	1497	30- 40	947.4	2629	42.2,42.2
50	1090	1138	1147	1260	1185	1254	1192	1221	40- 50	974.1	3603	57.8,57.8
60	959.1	1101	1293	1293	1177	1277	1139	1147	50- 60	1051	4653	74.7,74.7
70	759.9	583.7	561.7	392.0	710.5	920.6	1235	1006	60- 70	1033	5687	91.3,91.3
80	174.3	71.58	58.04	56.28	102.0	134.4	286.8	163.4	70- 80	432.9	6119	98.2,98.2
90	7.693	3.859	3.984	3.652	4.672	12.96	24.03	17.37	80- 90	56.34	6176	99.1,99.1
100	4.660	5.032	5.383	5.074	4.431	4.110	4.123	4.147	90-100	5.292	6181	99.2,99.2
110	6.198	6.636	6.999	6.724	6.017	5.763	5.821	5.846	100-110	5.734	6187	99.3,99.3
120	7.790	8.202	8.606	8.447	7.704	7.315	7.332	7.411	110-120	6.987	6194	99.4,99.4
130	9.621	10.04	10.69	10.47	9.846	9.245	9.088	9.009	120-130	7.837	6202	99.5,99.5
140	11.79	12.22	12.81	12.55	12.03	11.54	11.48	11.27	130-140	8.390	6210	99.7,99.7
150	13.61	13.85	14.17	13.95	13.62	13.37	13.46	13.31	140-150	8.066	6218	99.8,99.8
160	14.85	14.84	15.10	14.87	14.83	14.57	14.67	14.62	150-160	6.584	6225	99.9,99.9
170	15.77	15.62	15.84	15.66	15.81	15.54	15.65	15.58	160-170	4.314	6229	100,100
180	16.24	16.02	16.19	16.06	16.25	16.01	16.20	16.05	170-180	1.516	6230	100,100
DEG	LUMINOUS INTENSITY:cd									UNIT:lm		

Conical surface Flux(90deg): 3111.6 lm

%lum = 49.9%

%lamp = 49.9%

Conical surface Flux(120deg): 4653.4 lm

%lum = 74.7%

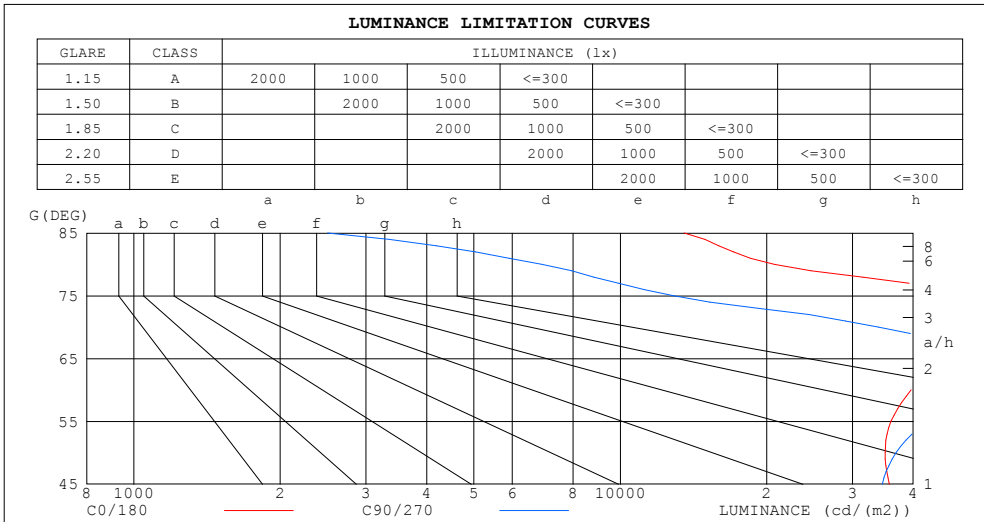
%lamp = 74.7%

C Range: 0 - 360DEG  
 C Interval: 45.0DEG  
 Test Speed: HIGH  
 Temperature:28.8DEG  
 Operators:wudashuai  
 Test Date:2021-11-04

$\gamma$  Range: 0 - 180DEG  
 $\gamma$  Interval: 1.0DEG  
 Test System:EVERFINE GO-2000A\_V1 SYSTEM V2.0.364  
 Humidity:66%  
 Test Distance:6.500m [K=1.0000]  
 Remarks:

LUMINANCE LIMITATION CURVES

Test:U:121.5V I:0.3714A P:44.94W PF:0.9957 Freq:59.97Hz Lamp Flux:5760x1 lm		
NAME: ASD Lighting Corp	TYPE:	WEIGHT:
SPEC.:ASD-CAN07-45DAC-BZ-3000K	DIM.:	SERIAL No.:
MFR.: ASD Lighting Corp	SUR.:0.22*0.22m	Shielding Angle:



LUMINANCE cd/(m2)		
G (DEG)	C0/180	C90/270
85	13522	2501
80	20729	6908
75	47411	12861
70	45890	33946
65	43975	56659
60	39617	53459
55	36002	42676
50	35021	36891
45	35732	34544

C Range: 0 - 360DEG  
 C Interval: 45.0DEG  
 Test Speed: HIGH  
 Temperature:28.8DEG  
 Operators:wudashuai  
 Test Date:2021-11-04

γ Range: 0 - 180DEG  
 γ Interval: 1.0DEG  
 Test System:EVERFINE GO-2000A\_V1 SYSTEM V2.0.364  
 Humidity:66%  
 Test Distance:6.500m [K=1.0000]  
 Remarks:

WEC AND CCEC

Test:U:121.5V I:0.3714A P:44.94W PF:0.9957 Freq:59.97Hz Lamp Flux:5760x1 lm		
NAME: ASD Lighting Corp	TYPE:	WEIGHT:
SPEC.:ASD-CAN07-45DAC-BZ-3000K	DIM.:	SERIAL No.:
MFR.: ASD Lighting Corp	SUR.:0.22*0.22m	Shielding Angle:

ρ <sub>cc</sub>	80%			70%			50%			30%			10%			0
ρ <sub>w</sub>	50%	30%	10%	50%	30%	10%	50%	30%	10%	50%	30%	10%	50%	30%	10%	0
ρ <sub>fc</sub>	20%			20%			20%			20%			20%			0
RCR	RCR:Room Cavity Ratio						Wall Exitance Coefficients (WEC)									
0.0																
1.0	.309	.176	.056	.302	.172	.055	.288	.165	.053	.275	.159	.051	.264	.153	.049	
2.0	.296	.162	.050	.289	.159	.049	.277	.154	.048	.266	.149	.047	.255	.144	.046	
3.0	.275	.146	.044	.269	.144	.043	.258	.140	.043	.248	.136	.042	.239	.132	.041	
4.0	.254	.132	.039	.248	.130	.038	.239	.127	.038	.230	.123	.037	.221	.120	.037	
5.0	.234	.119	.035	.229	.118	.034	.221	.115	.034	.213	.112	.033	.205	.110	.033	
6.0	.216	.109	.031	.212	.107	.031	.205	.105	.031	.198	.103	.030	.191	.101	.030	
7.0	.201	.099	.028	.197	.098	.028	.191	.096	.028	.184	.094	.027	.178	.093	.027	
8.0	.187	.092	.026	.184	.091	.026	.178	.089	.025	.172	.087	.025	.167	.086	.025	
9.0	.175	.085	.024	.172	.084	.024	.167	.082	.023	.162	.081	.023	.157	.080	.023	
10.0	.164	.079	.022	.162	.078	.022	.157	.077	.022	.152	.076	.021	.148	.074	.021	

ρ <sub>cc</sub>	80%			70%			50%			30%			10%			0
ρ <sub>w</sub>	50%	30%	10%	50%	30%	10%	50%	30%	10%	50%	30%	10%	50%	30%	10%	0
ρ <sub>fc</sub>	20%			20%			20%			20%			20%			0
RCR	RCR:Room Cavity Ratio						Ceiling Cavity Exitance Coefficients (CCEC)									
0.0	.197	.197	.197	.169	.169	.169	.115	.115	.115	.066	.066	.066	.021	.021	.021	
1.0	.187	.163	.141	.160	.140	.121	.109	.096	.084	.063	.056	.049	.020	.018	.016	
2.0	.180	.139	.104	.154	.119	.090	.105	.083	.063	.061	.048	.037	.019	.016	.012	
3.0	.172	.121	.080	.148	.105	.070	.101	.073	.049	.059	.042	.029	.019	.014	.009	
4.0	.165	.108	.065	.141	.093	.056	.097	.065	.039	.056	.038	.023	.018	.012	.008	
5.0	.157	.098	.054	.135	.084	.047	.093	.059	.033	.054	.035	.019	.017	.011	.006	
6.0	.150	.089	.046	.129	.077	.040	.089	.054	.028	.052	.032	.017	.017	.010	.006	
7.0	.143	.082	.040	.123	.071	.035	.085	.050	.025	.049	.030	.015	.016	.010	.005	
8.0	.137	.077	.035	.118	.066	.031	.081	.047	.022	.047	.028	.013	.015	.009	.004	
9.0	.130	.072	.032	.112	.062	.028	.078	.044	.020	.045	.026	.012	.015	.008	.004	
10.0	.125	.067	.029	.107	.058	.026	.074	.041	.018	.043	.024	.011	.014	.008	.004	

C Range: 0 - 360DEG  
 C Interval: 45.0DEG  
 Test Speed: HIGH  
 Temperature:28.8DEG  
 Operators:wudashuai  
 Test Date:2021-11-04

γ Range: 0 - 180DEG  
 γ Interval: 1.0DEG  
 Test System:EVERFINE GO-2000A\_V1 SYSTEM V2.0.364  
 Humidity:66%  
 Test Distance:6.500m [K=1.0000]  
 Remarks:

UGR(Unified Glare Rating) Table

Test:U:121.5V I:0.3714A P:44.94W PF:0.9957 Freq:59.97Hz Lamp Flux:5760x1 lm										
NAME: ASD Lighting Corp					TYPE:			WEIGHT:		
SPEC.:ASD-CAN07-45DAC-BZ-3000K					DIM.:			SERIAL No.:		
MFR.: ASD Lighting Corp					SUR.:0.22*0.22m			Shielding Angle:		
ceiling/cavity	0.7	0.7	0.5	0.5	0.3	0.7	0.7	0.5	0.5	0.3
walls	0.5	0.3	0.5	0.3	0.3	0.5	0.3	0.5	0.3	0.3
working plane	0.2	0.2	0.2	0.2	0.2	0.2	0.2	0.2	0.2	0.2
Room dimensions	Viewed crosswise					Viewed endwise				
x = 2H y = 2H	25.7	27.2	25.9	27.4	27.6	26.6	28.1	26.9	28.4	28.6
3H	27.8	29.2	28.1	29.5	29.7	28.2	29.6	28.5	29.9	30.1
4H	28.6	29.9	28.9	30.2	30.5	28.2	29.6	28.6	29.9	30.1
6H	28.8	30.1	29.2	30.4	30.7	28.2	29.4	28.5	29.7	30.0
8H	28.8	30.1	29.2	30.4	30.7	28.1	29.4	28.5	29.7	30.0
12H	28.8	30.0	29.2	30.3	30.6	28.1	29.3	28.4	29.6	29.9
4H 2H	26.7	28.0	27.0	28.3	28.6	27.4	28.7	27.7	29.0	29.3
3H	28.7	29.8	29.0	30.1	30.5	28.9	30.1	29.2	30.4	30.7
4H	29.4	30.5	29.8	30.8	31.2	28.9	30.0	29.3	30.3	30.7
6H	29.7	30.7	30.1	31.0	31.4	28.9	29.8	29.3	30.2	30.6
8H	29.7	30.6	30.1	31.0	31.4	28.8	29.7	29.3	30.1	30.5
12H	29.7	30.5	30.1	30.9	31.4	28.8	29.6	29.2	30.0	30.4
8H 4H	29.4	30.3	29.8	30.7	31.1	28.9	29.8	29.4	30.2	30.6
6H	29.7	30.5	30.2	30.9	31.3	28.9	29.7	29.4	30.1	30.5
8H	29.8	30.4	30.2	30.8	31.3	28.9	29.5	29.4	30.0	30.5
12H	29.8	30.3	30.3	30.8	31.3	28.9	29.4	29.4	29.9	30.4
12H 4H	29.4	30.2	29.8	30.6	31.0	28.9	29.7	29.3	30.1	30.5
6H	29.7	30.3	30.2	30.8	31.2	28.9	29.5	29.4	30.0	30.5
8H	29.7	30.3	30.2	30.8	31.3	28.9	29.4	29.4	29.9	30.4
Variations with the observer position at spacings:										
S = 1.0H	+ 0.1 / - 0.2					+ 0.3 / - 0.3				
1.5H	+ 0.2 / - 0.3					+ 0.5 / - 0.6				
2.0H	+ 0.6 / - 0.7					+ 1.3 / - 1.7				

CIE Pub.117, 6230 lm Total Lamp Luminous Flux Corrected (8log(F/F0) = 6.4)

C Range: 0 - 360DEG  
 C Interval: 45.0DEG  
 Test Speed: HIGH  
 Temperature:28.8DEG  
 Operators:wudashuai  
 Test Date:2021-11-04

γ Range: 0 - 180DEG  
 γ Interval: 1.0DEG  
 Test System:EVERFINE GO-2000A\_V1 SYSTEM V2.0.364  
 Humidity:66%  
 Test Distance:6.500m [K=1.0000]  
 Remarks:

## UTILIZATION FACTORS TABLE

Test:U:121.5V I:0.3714A P:44.94W PF:0.9957 Freq:59.97Hz Lamp Flux:5760x1 lm		
NAME: ASD Lighting Corp	TYPE:	WEIGHT:
SPEC.:ASD-CAN07-45DAC-BZ-3000K	DIM.:	SERIAL No.:
MFR.: ASD Lighting Corp	SUR.:0.22*0.22m	Shielding Angle:

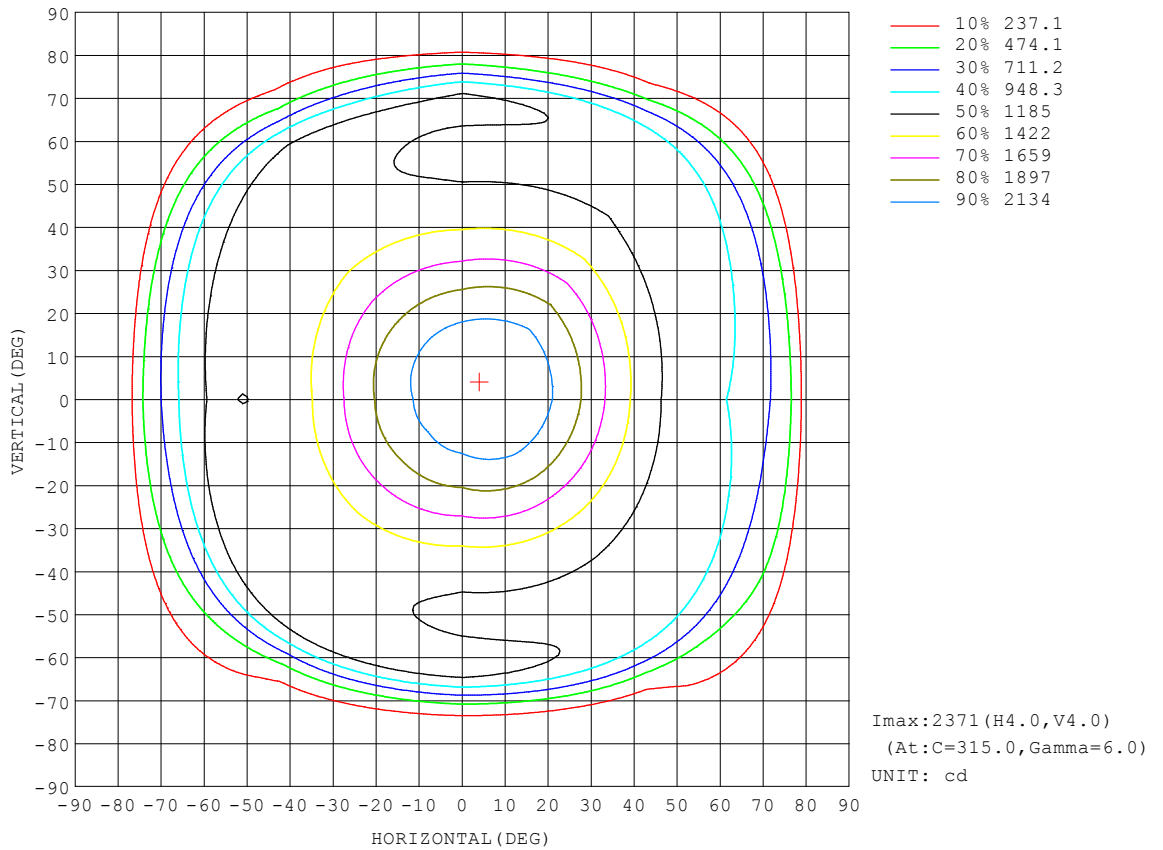
REFLECTANCE										
Ceiling	0.8	0.8	0.8	0.7	0.7	0.7	0.5	0.5	0.5	0
Walls	0.7	0.5	0.3	0.7	0.5	0.3	0.7	0.5	0.3	0
Working plane	0.2	0.2	0.2	0.2	0.2	0.2	0.2	0.2	0.2	0
ROOM INDEX	UTILIZATION FACTORS (PERCENT) $k(RI) \times RCR = 5$									
k = 0.60	56	45	38	56	44	38	54	44	37	31
0.80	66	54	47	65	54	47	63	53	46	39
1.00	74	63	55	73	62	55	71	64	54	47
1.25	82	71	63	80	70	63	77	68	62	54
1.50	87	76	69	85	75	69	82	74	67	60
2.00	94	85	78	92	84	78	88	81	76	68
2.50	98	90	84	96	89	83	92	86	81	72
3.00	102	95	89	99	93	88	95	90	86	77
4.00	106	100	96	104	98	94	99	95	91	82
5.00	109	104	100	106	102	98	102	98	95	86
ROOM INDEX	UF(total)									Direct
According to DIN EN 13032-2 2004			Suspended				SHRNOM = 1.25			

C Range: 0 - 360DEG  
 C Interval: 45.0DEG  
 Test Speed: HIGH  
 Temperature:28.8DEG  
 Operators:wudashuai  
 Test Date:2021-11-04

$\gamma$  Range: 0 - 180DEG  
 $\gamma$  Interval: 1.0DEG  
 Test System:EVERFINE GO-2000A\_V1 SYSTEM V2.0.364  
 Humidity:66%  
 Test Distance:6.500m [K=1.0000]  
 Remarks:

ISOCANDELA DIAGRAM

Test:U:121.5V I:0.3714A P:44.94W PF:0.9957 Freq:59.97Hz Lamp Flux:5760x1 lm		
NAME: ASD Lighting Corp	TYPE:	WEIGHT:
SPEC.:ASD-CAN07-45DAC-BZ-3000K	DIM.:	SERIAL No.:
MFR.: ASD Lighting Corp	SUR.:0.22*0.22m	Shielding Angle:

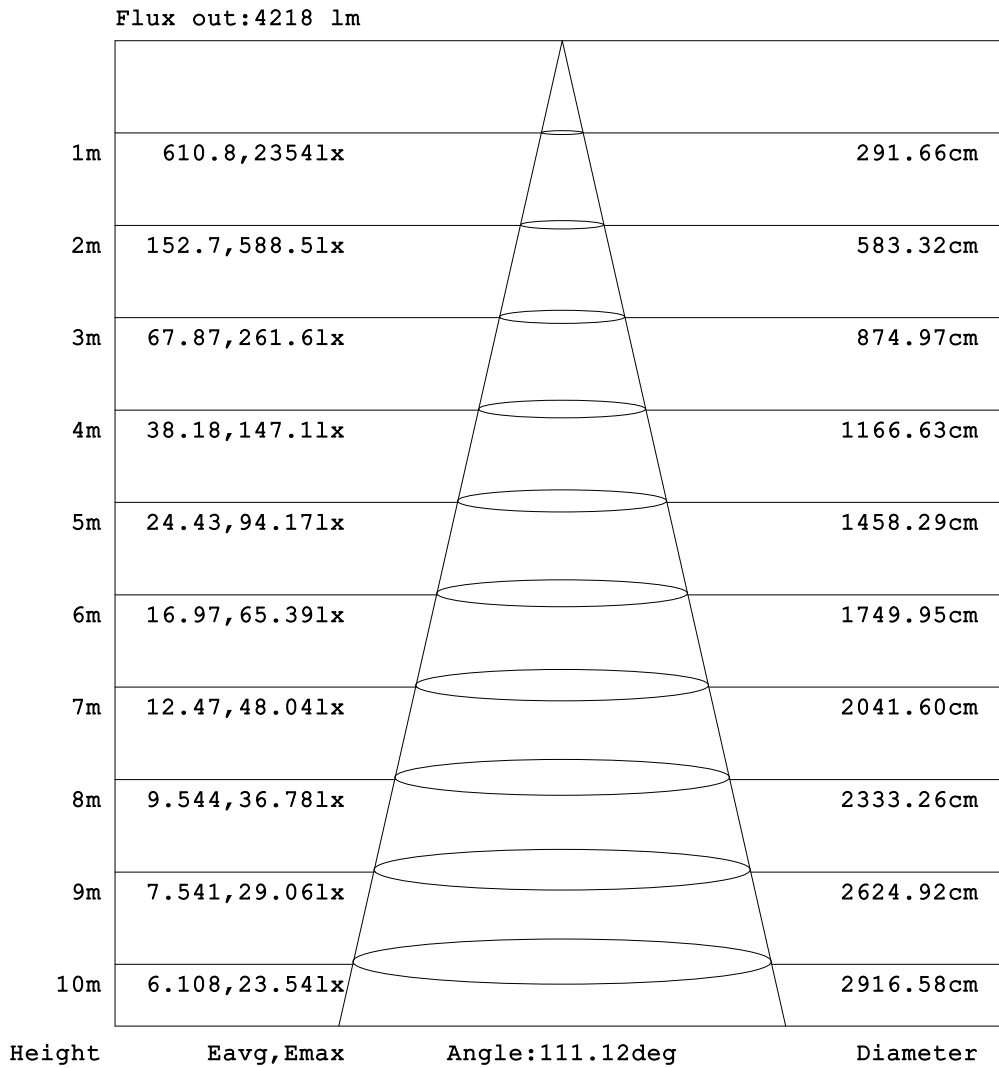


C Range: 0 - 360DEG  
 C Interval: 45.0DEG  
 Test Speed: HIGH  
 Temperature:28.8DEG  
 Operators:wudashuai  
 Test Date:2021-11-04

γ Range: 0 - 180DEG  
 γ Interval: 1.0DEG  
 Test System:EVERFINE GO-2000A\_V1 SYSTEM V2.0.364  
 Humidity:66%  
 Test Distance:6.500m [K=1.0000]  
 Remarks:

AAI Figure

Test:U:121.5V I:0.3714A P:44.94W PF:0.9957 Freq:59.97Hz Lamp Flux:5760x1 lm		
NAME: ASD Lighting Corp	TYPE:	WEIGHT:
SPEC.:ASD-CAN07-45DAC-BZ-3000K	DIM.:	SERIAL No.:
MFR.: ASD Lighting Corp	SUR.:0.22*0.22m	Shielding Angle:



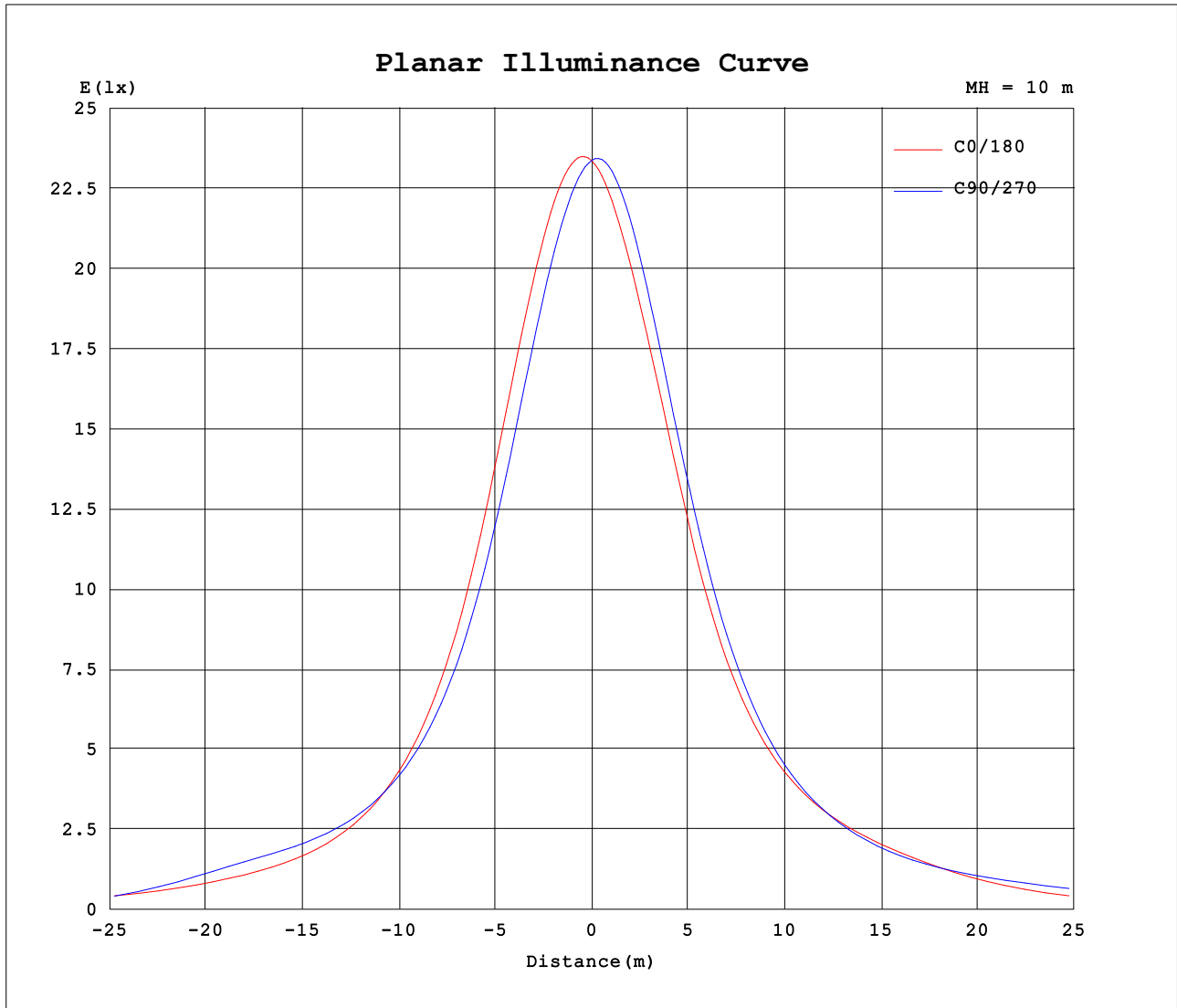
Note:The Curves indicate the illuminated area and the average illumination when the luminaire is at different distance.

C Range: 0 - 360DEG  
 C Interval: 45.0DEG  
 Test Speed: HIGH  
 Temperature:28.8DEG  
 Operators:wudashuai  
 Test Date:2021-11-04

γ Range: 0 - 180DEG  
 γ Interval: 1.0DEG  
 Test System:EVERFINE GO-2000A\_V1 SYSTEM V2.0.364  
 Humidity:66%  
 Test Distance:6.500m [K=1.0000]  
 Remarks:



Planar Illuminance Curve



C Range: 0 - 360DEG  
 C Interval: 45.0DEG  
 Test Speed: HIGH  
 Temperature: 28.8DEG  
 Operators: wudashuai  
 Test Date: 2021-11-04

γ Range: 0 - 180DEG  
 γ Interval: 1.0DEG  
 Test System: EVERFINE GO-2000A\_V1 SYSTEM V2.0.364  
 Humidity: 66%  
 Test Distance: 6.500m [K=1.0000]  
 Remarks:

LUMINOUS DISTRIBUTION INTENSITY DATA

Test:U:121.5V I:0.3714A P:44.94W PF:0.9957 Freq:59.97Hz Lamp Flux:5760x1 lm		
NAME: ASD Lighting Corp	TYPE:	WEIGHT:
SPEC.:ASD-CAN07-45DAC-BZ-3000K	DIM.:	SERIAL No.:
MFR.: ASD Lighting Corp	SUR.:0.22*0.22m	Shielding Angle:

Table--1

UNIT: cd

C (DEG) \ γ (DEG)	0	45	90	135	180	225	270	315										
0	2338	2338	2338	2338	2338	2338	2338	2338										
5	2366	2329	2283	2260	2267	2303	2346	2370										
10	2347	2286	2192	2155	2166	2228	2301	2351										
15	2278	2201	2068	2033	2045	2123	2208	2288										
20	2162	2064	1913	1892	1907	1991	2074	2193										
25	2001	1882	1736	1736	1749	1835	1914	2059										
30	1799	1677	1556	1568	1572	1674	1741	1886										
35	1585	1484	1395	1427	1418	1523	1561	1690										
40	1391	1330	1267	1324	1295	1398	1406	1497										
45	1223	1215	1182	1267	1217	1306	1280	1336										
50	1090	1138	1147	1260	1185	1254	1192	1221										
55	1000	1103	1184	1296	1195	1248	1141	1160										
60	959	1101	1293	1293	1177	1277	1139	1147										
65	900	1025	1158	977	996	1252	1213	1140										
70	760	584	562	392	711	921	1235	1006										
75	594	179	161	137	406	363	809	511										
80	174	71.6	58.0	56.3	102	134	287	163										
85	57.1	20.9	10.5	15.1	31.3	52.8	89.7	65.4										
90	7.69	3.86	3.98	3.65	4.67	13.0	24.0	17.4										
95	4.07	4.27	4.59	4.27	3.76	3.48	3.62	3.58										
100	4.66	5.03	5.38	5.07	4.43	4.11	4.12	4.15										
105	5.39	5.85	6.21	5.91	5.22	4.93	4.92	4.95										
110	6.20	6.64	7.00	6.72	6.02	5.76	5.82	5.85										
115	6.99	7.43	7.79	7.57	6.83	6.53	6.62	6.66										
120	7.79	8.20	8.61	8.45	7.70	7.31	7.33	7.41										
125	8.65	9.03	9.57	9.40	8.72	8.21	8.10	8.15										
130	9.62	10.0	10.7	10.5	9.85	9.25	9.09	9.01										
135	10.7	11.1	11.8	11.5	11.0	10.4	10.3	10.1										
140	11.8	12.2	12.8	12.5	12.0	11.5	11.5	11.3										
145	12.8	13.2	13.6	13.4	12.9	12.5	12.6	12.4										
150	13.6	13.8	14.2	14.0	13.6	13.4	13.5	13.3										
155	14.3	14.4	14.6	14.4	14.3	14.0	14.1	14.0										
160	14.8	14.8	15.1	14.9	14.8	14.6	14.7	14.6										
165	15.3	15.3	15.5	15.3	15.4	15.1	15.2	15.2										
170	15.8	15.6	15.8	15.7	15.8	15.5	15.6	15.6										
175	16.1	15.9	16.1	15.9	16.1	15.8	16.0	15.9										
180	16.2	16.0	16.2	16.1	16.3	16.0	16.2	16.1										

C Range: 0 - 360DEG  
 C Interval: 45.0DEG  
 Test Speed: HIGH  
 Temperature:28.8DEG  
 Operators:wudashuai  
 Test Date:2021-11-04

γ Range: 0 - 180DEG  
 γ Interval: 1.0DEG  
 Test System:EVERFINE GO-2000A\_V1 SYSTEM V2.0.364  
 Humidity:66%  
 Test Distance:6.500m [K=1.0000]  
 Remarks: