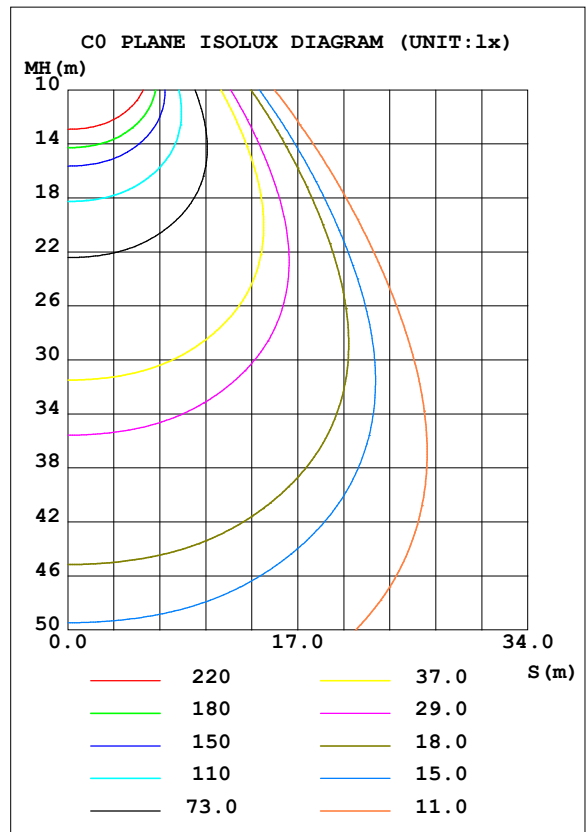
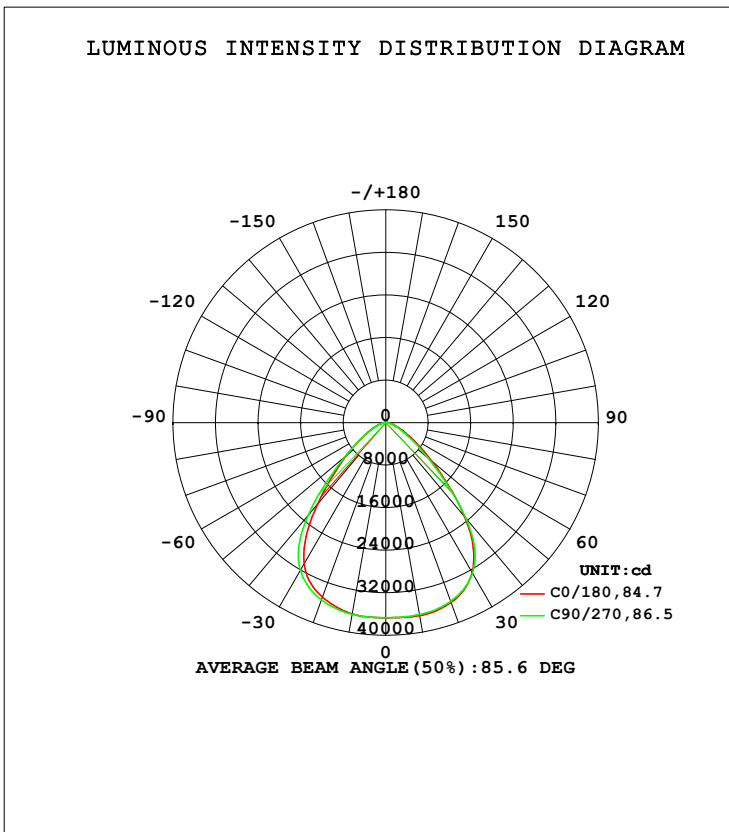


LUMINAIRE PHOTOMETRIC TEST REPORT

Test:U:277.6V I:1.757A P:484.3W PF:0.9930 Freq:59.98Hz Lamp Flux:70715.9x1 lm		
NAME: ASD-UHB3HV-500ADAC-BK500W-5000K	TYPE:	WEIGHT:
SPEC.:	DIM.:	SERIAL No.:
MFR.: ASD Lighting Corp.	SUR.:0.42*0.42m	Shielding Angle:

DATA OF LAMP		PHOTOMETRIC DATA Eff: 146.00 lm/W			
MODEL		I _{max} (cd)	36838	S/MH (C0/180)	1.18
NOMINAL POWER (W)	500	LOR (%)	100.0	S/MH (C90/270)	1.23
RATED VOLTAGE (V)	277	TOTAL FLUX (lm)	70716	<input type="checkbox"/> UP, DN (C0-180)	0.5, 50.3
NOMINAL FLUX (lm)	70715.9	CIE CLASS	DIRECT	<input type="checkbox"/> UP, DN (C180-360)	0.5, 48.7
LAMPS INSIDE	1	<input type="checkbox"/> up (%)	1.0	CIBSE SHR NOM	1.25
TEST VOLTAGE (V)	277	<input type="checkbox"/> down (%)	99.0	CIBSE SHR MAX	1.25



C Range: 0 - 360DEG
 C Interval: 45.0DEG
 Test Speed: HIGH
 Temperature: 27DEG
 Operators: lianghaizhu
 Test Date: 2023-04-27

Range: 0 - 180DEG
 Interval: 1.0DEG
 Test System: EVERFINE GO-2000A_V1 SYSTEM V2.0.364
 Humidity: 56%
 Test Distance: 6.500m [K=1.0000]
 Remarks:

ZONAL FLUX DIAGRAM

ZONAL FLUX DIAGRAM:

mm	C0	C45	C90	C135	C180	C225	C270	C315	mm	□ zone	□ total	%lum, lamp
10	3684	3676	3664	3653	3651	3654	3659	3669	0- 10	3501	3501	4.95,4.95
20	3595	3593	3574	3517	3490	3517	3545	3562	10- 20	10245	13746	19.4,19.4
30	3251	3264	3265	3148	3068	3161	3212	3196	20- 30	15706	29452	41.6,41.6
40	2310	2292	2343	2137	1992	2143	2272	2213	30- 40	17286	46739	66.1,66.1
50	1137	1113	1038	1050	967.5	1011	1018	1077	40- 50	12147	58886	83.3,83.3
60	512.8	505.1	442.0	476.4	434.6	462.9	428.1	494.7	50- 60	6448	65333	92.4,92.4
70	221.3	213.7	185.7	199.7	186.6	193.7	181.1	209.2	60- 70	3127	68460	96.8,96.8
80	71.53	64.65	57.82	61.31	57.54	60.93	58.05	65.01	70- 80	1300	69760	98.6,98.6
90	3.880	3.824	3.896	4.309	4.553	4.228	3.749	3.683	80- 90	266.2	70026	99,99
100	4.243	4.236	4.312	4.556	4.706	4.452	4.143	4.083	90-100	44.64	70071	99.1,99.1
110	5.500	5.708	5.833	5.912	5.859	5.701	5.627	5.449	100-110	51.22	70122	99.2,99.2
120	8.751	8.998	9.200	9.248	9.187	9.010	8.934	8.677	110-120	72.21	70194	99.3,99.3
130	12.50	12.75	12.96	13.03	13.00	12.74	12.71	12.38	120-130	97.12	70291	99.4,99.4
140	16.23	16.42	16.58	16.72	16.82	16.48	16.46	16.14	130-140	112.9	70404	99.6,99.6
150	19.62	19.81	19.91	20.11	20.40	20.00	19.93	19.66	140-150	114.0	70518	99.7,99.7
160	23.22	23.31	23.52	23.52	24.14	23.69	23.68	23.34	150-160	100.0	70618	99.9,99.9
170	26.87	26.77	27.01	26.86	27.52	27.07	27.17	26.82	160-170	71.34	70689	100,100
180	28.84	28.57	28.73	28.48	28.86	28.57	28.74	28.47	170-180	26.52	70716	100,100
DEG	LUMINOUS INTENSITY:×10cd									UNIT:lm		

Conical surface Flux(90deg): 53678 lm

%lum = 75.9%

%lamp = 75.9%

Conical surface Flux(120deg): 65333 lm

%lum = 92.4%

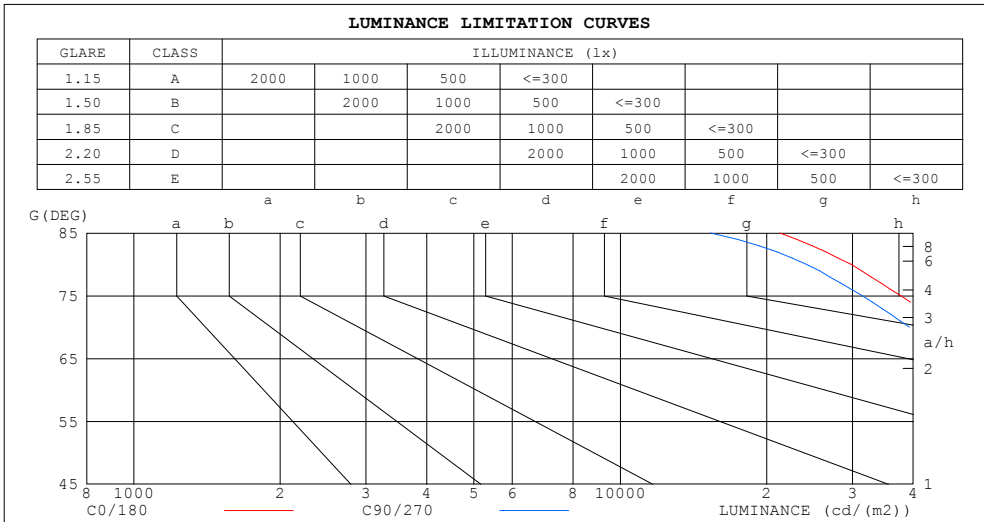
%lamp = 92.4%

C Range: 0 - 360DEG
 C Interval: 45.0DEG
 Test Speed: HIGH
 Temperature:27DEG
 Operators:lianghaizhu
 Test Date:2023-04-27

□ Range: 0 - 180DEG
 □ Interval: 1.0DEG
 Test System:EVERFINE GO-2000A_V1 SYSTEM V2.0.364
 Humidity:56%
 Test Distance:6.500m [K=1.0000]
 Remarks:

LUMINANCE LIMITATION CURVES

Test:U:277.6V I:1.757A P:484.3W PF:0.9930 Freq:59.98Hz Lamp Flux:70715.9x1 lm		
NAME: ASD-UHB3HV-500ADAC-BK500W-5000K	TYPE:	WEIGHT:
SPEC.:	DIM.:	SERIAL No.:
MFR.: ASD Lighting Corp.	SUR.:0.42*0.42m	Shielding Angle:



LUMINANCE cd/(m2)		
G (DEG)	C0/180	C90/270
85	21295	15347
80	29851	24127
75	37749	31439
70	46895	39339
65	58163	49363
60	74323	64053
55	97408	85566
50	128158	117056
45	170426	165683

C Range: 0 - 360DEG
 C Interval: 45.0DEG
 Test Speed: HIGH
 Temperature:27DEG
 Operators:lianghaizhu
 Test Date:2023-04-27

Range: 0 - 180DEG
 Interval: 1.0DEG
 Test System:EVERFINE GO-2000A_V1 SYSTEM V2.0.364
 Humidity:56%
 Test Distance:6.500m [K=1.0000]
 Remarks:

WEC AND CCEC

Test:U:277.6V I:1.757A P:484.3W PF:0.9930 Freq:59.98Hz Lamp Flux:70715.9x1 lm		
NAME: ASD-UHB3HV-500ADAC-BK500W-5000K	TYPE:	WEIGHT:
SPEC.:	DIM.:	SERIAL No.:
MFR.: ASD Lighting Corp.	SUR.:0.42*0.42m	Shielding Angle:

<input type="checkbox"/> cc	80%	70%	50%	30%	10%	0
<input type="checkbox"/> w	50% 30% 10%	50% 30% 10%	50% 30% 10%	50% 30% 10%	50% 30% 10%	0
<input type="checkbox"/> fc	20%	20%	20%	20%	20%	0
RCR	RCR:Room Cavity Ratio		Wall Exitance Coefficients (WEC)			
0.0						
1.0	.234 .133 .042	.227 .129 .041	.213 .122 .039	.201 .116 .037	.190 .110 .035	
2.0	.226 .124 .038	.220 .121 .037	.209 .116 .036	.198 .111 .035	.188 .106 .034	
3.0	.215 .115 .034	.210 .112 .034	.200 .108 .033	.190 .104 .032	.182 .101 .031	
4.0	.204 .106 .031	.199 .104 .031	.190 .101 .030	.181 .097 .029	.174 .094 .029	
5.0	.192 .098 .028	.188 .096 .028	.180 .094 .028	.173 .091 .027	.166 .089 .027	
6.0	.181 .091 .026	.178 .090 .026	.171 .087 .025	.164 .085 .025	.158 .083 .025	
7.0	.172 .085 .024	.168 .084 .024	.162 .082 .024	.156 .080 .023	.150 .078 .023	
8.0	.162 .079 .022	.159 .078 .022	.154 .077 .022	.148 .075 .022	.143 .074 .021	
9.0	.154 .075 .021	.151 .074 .021	.146 .072 .020	.141 .071 .020	.137 .069 .020	
10.0	.146 .070 .019	.144 .070 .019	.139 .068 .019	.135 .067 .019	.131 .066 .019	

<input type="checkbox"/> cc	80%	70%	50%	30%	10%	0
<input type="checkbox"/> w	50% 30% 10%	50% 30% 10%	50% 30% 10%	50% 30% 10%	50% 30% 10%	0
<input type="checkbox"/> fc	20%	20%	20%	20%	20%	0
RCR	RCR:Room Cavity Ratio		Ceiling Cavity Exitance Coefficients (CCEC)			
0.0	.198 .198 .198	.169 .169 .169	.115 .115 .115	.066 .066 .066	.021 .021 .021	
1.0	.183 .164 .148	.156 .141 .127	.107 .097 .088	.061 .056 .051	.020 .018 .017	
2.0	.171 .140 .113	.147 .120 .098	.100 .083 .068	.058 .048 .040	.019 .016 .013	
3.0	.162 .122 .090	.138 .105 .078	.095 .073 .055	.055 .043 .032	.018 .014 .011	
4.0	.153 .108 .073	.131 .093 .063	.090 .065 .044	.052 .038 .026	.017 .012 .009	
5.0	.146 .097 .060	.125 .084 .053	.086 .058 .037	.050 .034 .022	.016 .011 .007	
6.0	.139 .088 .051	.119 .076 .045	.082 .053 .032	.048 .031 .019	.015 .010 .006	
7.0	.133 .081 .045	.114 .070 .039	.079 .049 .028	.046 .029 .016	.015 .009 .005	
8.0	.127 .075 .039	.109 .065 .034	.076 .046 .024	.044 .027 .015	.014 .009 .005	
9.0	.122 .070 .035	.105 .061 .031	.073 .043 .022	.042 .025 .013	.014 .008 .004	
10.0	.117 .066 .032	.101 .057 .028	.070 .040 .020	.041 .024 .012	.013 .008 .004	

C Range: 0 - 360DEG
 C Interval: 45.0DEG
 Test Speed: HIGH
 Temperature:27DEG
 Operators:lianghaizhu
 Test Date:2023-04-27

Range: 0 - 180DEG
 Interval: 1.0DEG
 Test System:EVERFINE GO-2000A_V1 SYSTEM V2.0.364
 Humidity:56%
 Test Distance:6.500m [K=1.0000]
 Remarks:

UGR(Unified Glare Rating) Table

Test:U:277.6V I:1.757A P:484.3W PF:0.9930 Freq:59.98Hz Lamp Flux:70715.9x1 lm		
NAME: ASD-UHB3HV-500ADAC-BK500W-5000K	TYPE:	WEIGHT:
SPEC.:	DIM.:	SERIAL No.:
MFR.: ASD Lighting Corp.	SUR.:0.42*0.42m	Shielding Angle:

ceiling/cavity	0.7	0.7	0.5	0.5	0.3	0.7	0.7	0.5	0.5	0.3
walls	0.5	0.3	0.5	0.3	0.3	0.5	0.3	0.5	0.3	0.3
working plane	0.2	0.2	0.2	0.2	0.2	0.2	0.2	0.2	0.2	0.2
Room dimensions	Viewed crosswise					Viewed endwise				
x = 2H y = 2H	28.1	29.4	28.4	29.6	29.8	27.9	29.1	28.1	29.3	29.5
3H	28.4	29.6	28.7	29.8	30.0	28.1	29.2	28.4	29.5	29.7
4H	28.5	29.6	28.8	29.8	30.1	28.1	29.2	28.4	29.5	29.7
6H	28.5	29.5	28.9	29.8	30.1	28.1	29.2	28.5	29.4	29.7
8H	28.5	29.5	28.9	29.8	30.1	28.1	29.1	28.5	29.4	29.7
12H	28.5	29.4	28.8	29.7	30.0	28.1	29.0	28.4	29.3	29.6
4H 2H	28.2	29.3	28.5	29.5	29.8	27.9	29.0	28.3	29.3	29.5
3H	28.6	29.5	29.0	29.8	30.1	28.3	29.2	28.6	29.5	29.8
4H	28.8	29.6	29.1	29.9	30.3	28.4	29.3	28.8	29.6	29.9
6H	28.8	29.6	29.2	29.9	30.3	28.5	29.2	28.9	29.6	29.9
8H	28.9	29.5	29.3	29.9	30.3	28.5	29.2	28.9	29.5	29.9
12H	28.8	29.5	29.3	29.9	30.3	28.4	29.1	28.9	29.5	29.9
8H 4H	28.7	29.4	29.2	29.8	30.2	28.4	29.1	28.8	29.5	29.9
6H	28.9	29.4	29.3	29.9	30.3	28.5	29.1	29.0	29.5	29.9
8H	28.9	29.4	29.4	29.9	30.3	28.5	29.0	29.0	29.5	29.9
12H	28.9	29.4	29.4	29.8	30.3	28.5	29.0	29.0	29.4	29.9
12H 4H	28.7	29.3	29.1	29.7	30.1	28.4	29.0	28.8	29.4	29.8
6H	28.9	29.4	29.3	29.8	30.3	28.5	29.0	29.0	29.4	29.9
8H	28.9	29.3	29.4	29.8	30.3	28.5	29.0	29.0	29.4	29.9
Variations with the observer position at spacings:										
S = 1.0H	+ 1.0 / - 1.4					+ 1.1 / - 1.7				
1.5H	+ 1.1 / - 1.0					+ 1.3 / - 1.1				
2.0H	+ 2.1 / - 1.7					+ 2.3 / - 1.8				

CIE Pub.117, 70716 lm Total Lamp Luminous Flux Corrected (8log(F/F0) = 14.8)

C Range: 0 - 360DEG
 C Interval: 45.0DEG
 Test Speed: HIGH
 Temperature:27DEG
 Operators:lianghaizhu
 Test Date:2023-04-27

Range: 0 - 180DEG
 Interval: 1.0DEG
 Test System:EVERFINE GO-2000A_V1 SYSTEM V2.0.364
 Humidity:56%
 Test Distance:6.500m [K=1.0000]
 Remarks:

UTILIZATION FACTORS TABLE

Test:U:277.6V I:1.757A P:484.3W PF:0.9930 Freq:59.98Hz Lamp Flux:70715.9x1 lm		
NAME: ASD-UHB3HV-500ADAC-BK500W-5000K	TYPE:	WEIGHT:
SPEC.:	DIM.:	SERIAL No.:
MFR.: ASD Lighting Corp.	SUR.:0.42*0.42m	Shielding Angle:

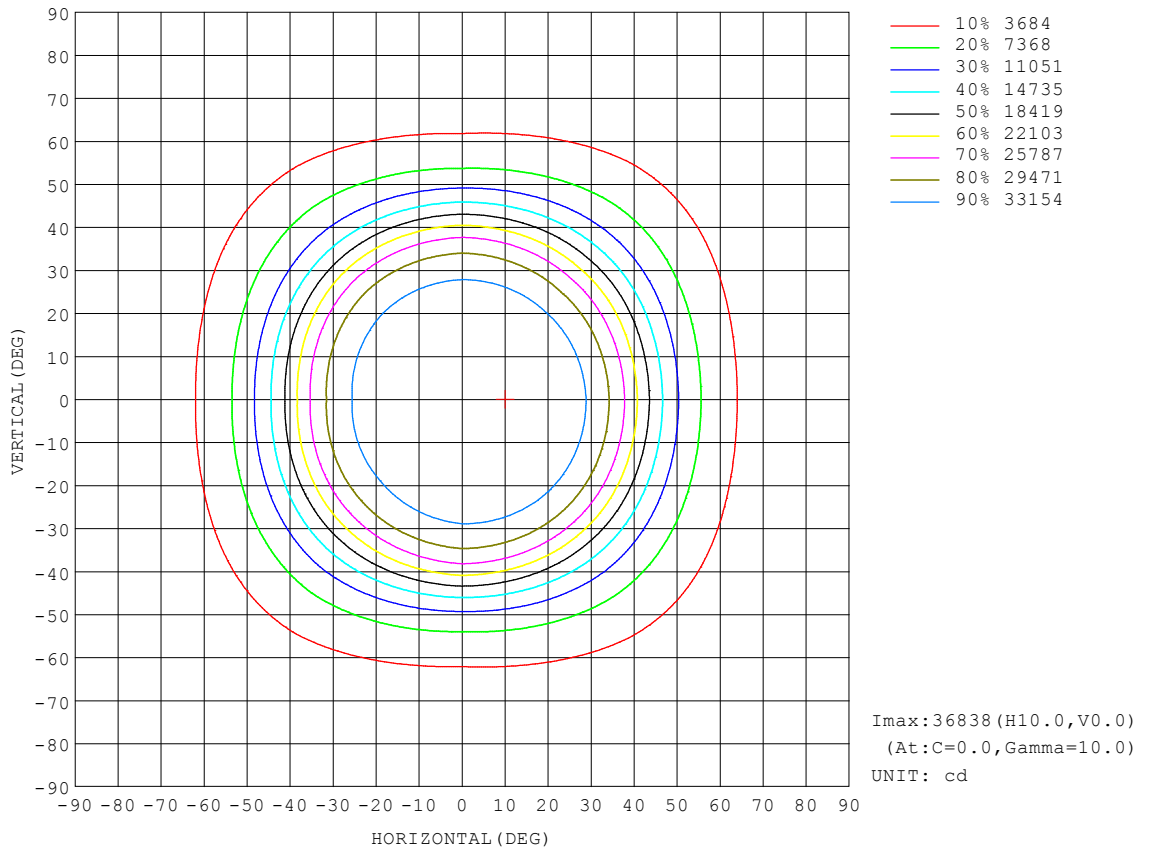
REFLECTANCE										
Ceiling	0.8	0.8	0.8	0.7	0.7	0.7	0.5	0.5	0.5	0
Walls	0.7	0.5	0.3	0.7	0.5	0.3	0.7	0.5	0.3	0
Working plane	0.2	0.2	0.2	0.2	0.2	0.2	0.2	0.2	0.2	0
ROOM INDEX	UTILIZATION FACTORS (PERCENT) $k(RI) \times RCR = 5$									
k = 0.60	70	61	55	69	61	55	68	60	55	50
0.80	80	71	65	79	70	65	77	70	64	59
1.00	87	79	73	86	78	73	84	79	72	67
1.25	93	85	80	92	85	80	89	83	79	73
1.50	97	90	85	96	89	84	93	87	83	77
2.00	102	96	91	100	95	90	97	93	89	82
2.50	105	99	95	103	98	94	99	95	92	85
3.00	107	102	98	105	101	97	101	98	95	87
4.00	110	106	103	108	104	101	104	101	98	90
5.00	112	108	105	109	106	104	105	103	100	92
ROOM INDEX	UF(total)									Direct
According to DIN EN 13032-2 2004			Suspended				SHRNOM = 1.25			

C Range: 0 - 360DEG
 C Interval: 45.0DEG
 Test Speed: HIGH
 Temperature:27DEG
 Operators:lianghaizhu
 Test Date:2023-04-27

Range: 0 - 180DEG
 Interval: 1.0DEG
 Test System:EVERFINE GO-2000A_V1 SYSTEM V2.0.364
 Humidity:56%
 Test Distance:6.500m [K=1.0000]
 Remarks:

ISOCANDELA DIAGRAM

Test:U:277.6V I:1.757A P:484.3W PF:0.9930 Freq:59.98Hz Lamp Flux:70715.9x1 lm		
NAME: ASD-UHB3HV-500ADAC-BK500W-5000K	TYPE:	WEIGHT:
SPEC.:	DIM.:	SERIAL No.:
MFR.: ASD Lighting Corp.	SUR.:0.42*0.42m	Shielding Angle:

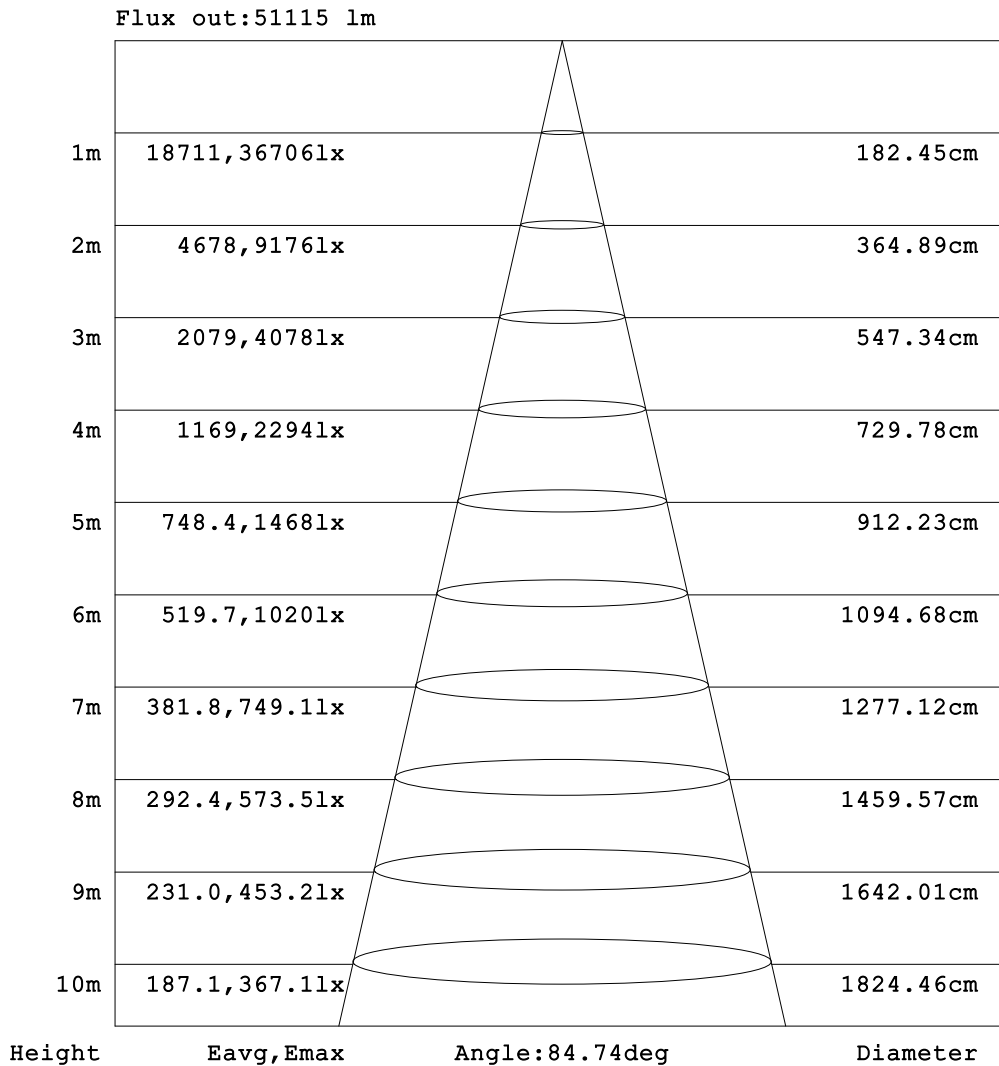


C Range: 0 - 360DEG
 C Interval: 45.0DEG
 Test Speed: HIGH
 Temperature: 27DEG
 Operators: lianghaizhu
 Test Date: 2023-04-27

Range: 0 - 180DEG
 Interval: 1.0DEG
 Test System: EVERFINE GO-2000A_V1 SYSTEM V2.0.364
 Humidity: 56%
 Test Distance: 6.500m [K=1.0000]
 Remarks:

AAI Figure

Test:U:277.6V I:1.757A P:484.3W PF:0.9930 Freq:59.98Hz Lamp Flux:70715.9x1 lm		
NAME: ASD-UHB3HV-500ADAC-BK500W-5000K	TYPE:	WEIGHT:
SPEC.:	DIM.:	SERIAL No.:
MFR.: ASD Lighting Corp.	SUR.:0.42*0.42m	Shielding Angle:

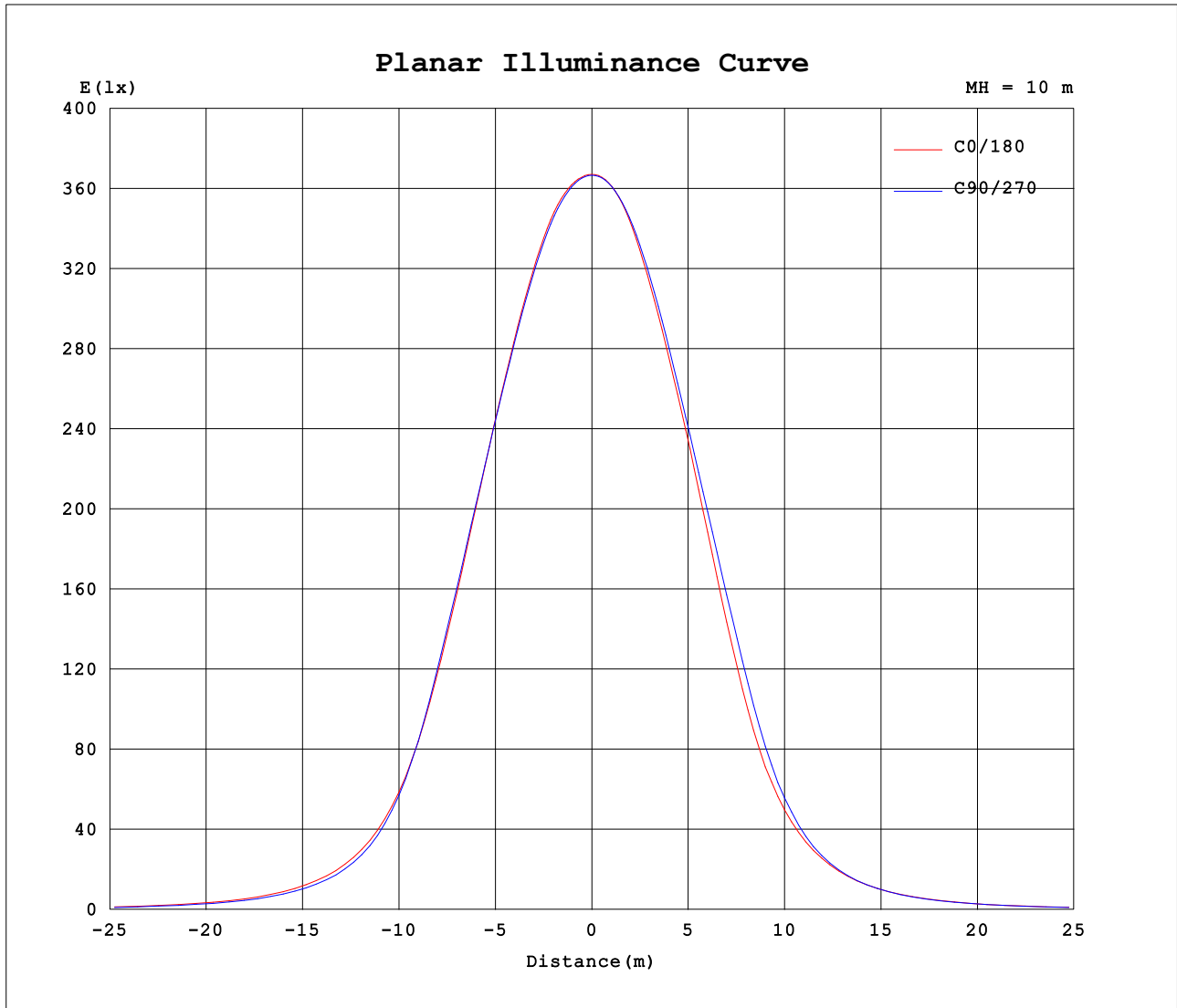


Note:The Curves indicate the illuminated area and the average illumination when the luminaire is at different distance.

C Range: 0 - 360DEG
 C Interval: 45.0DEG
 Test Speed: HIGH
 Temperature:27DEG
 Operators:lianghaizhu
 Test Date:2023-04-27

Range: 0 - 180DEG
 Interval: 1.0DEG
 Test System:EVERFINE GO-2000A_V1 SYSTEM V2.0.364
 Humidity:56%
 Test Distance:6.500m [K=1.0000]
 Remarks:

Planar Illuminance Curve



C Range: 0 - 360DEG
C Interval: 45.0DEG
Test Speed: HIGH
Temperature: 27DEG
Operators: lianghaizhu
Test Date: 2023-04-27

Range: 0 - 180DEG
 Interval: 1.0DEG
Test System: EVERFINE GO-2000A_V1 SYSTEM V2.0.364
Humidity: 56%
Test Distance: 6.500m [K=1.0000]
Remarks:

LUMINOUS DISTRIBUTION INTENSITY DATA

Test:U:277.6V I:1.757A P:484.3W PF:0.9930 Freq:59.98Hz Lamp Flux:70715.9x1 lm		
NAME: ASD-UHB3HV-500ADAC-BK500W-5000K	TYPE:	WEIGHT:
SPEC.:	DIM.:	SERIAL No.:
MFR.: ASD Lighting Corp.	SUR.:0.42*0.42m	Shielding Angle:

Table--1

UNIT: x10cd

C (DEG) □ (DEG)	0	45	90	135	180	225	270	315										
0	3671	3668	3666	3663	3671	3668	3666	3663										
5	3676	3672	3667	3664	3671	3669	3668	3668										
10	3684	3676	3664	3653	3651	3654	3659	3669										
15	3663	3657	3639	3606	3589	3604	3622	3638										
20	3595	3593	3574	3517	3490	3517	3545	3562										
25	3473	3475	3461	3379	3338	3385	3419	3429										
30	3251	3264	3265	3148	3068	3161	3212	3196										
35	2873	2892	2921	2746	2615	2762	2858	2803										
40	2310	2292	2343	2137	1992	2143	2272	2213										
45	1663	1628	1617	1528	1411	1491	1579	1573										
50	1137	1113	1038	1050	968	1011	1018	1077										
55	771	756	677	714	654	694	656	738										
60	513	505	442	476	435	463	428	495										
65	339	332	288	311	286	301	280	326										
70	221	214	186	200	187	194	181	209										
75	135	127	112	119	112	117	110	125										
80	71.5	64.7	57.8	61.3	57.5	60.9	58.1	65.0										
85	25.6	20.8	18.5	19.7	17.6	20.4	20.0	22.0										
90	3.88	3.82	3.90	4.31	4.55	4.23	3.75	3.68										
95	3.93	3.90	3.97	4.30	4.47	4.21	3.82	3.76										
100	4.24	4.24	4.31	4.56	4.71	4.45	4.14	4.08										
105	4.66	4.72	4.79	4.97	4.94	4.80	4.60	4.56										
110	5.50	5.71	5.83	5.91	5.86	5.70	5.63	5.45										
115	7.03	7.28	7.43	7.50	7.45	7.28	7.21	6.98										
120	8.75	9.00	9.20	9.25	9.19	9.01	8.93	8.68										
125	10.6	10.9	11.1	11.1	11.1	10.8	10.8	10.5										
130	12.5	12.7	13.0	13.0	13.0	12.7	12.7	12.4										
135	14.4	14.6	14.8	14.9	14.9	14.6	14.6	14.3										
140	16.2	16.4	16.6	16.7	16.8	16.5	16.5	16.1										
145	17.9	18.2	18.2	18.4	18.6	18.3	18.2	17.9										
150	19.6	19.8	19.9	20.1	20.4	20.0	19.9	19.7										
155	21.4	21.5	21.7	21.8	22.2	21.8	21.7	21.4										
160	23.2	23.3	23.5	23.5	24.1	23.7	23.7	23.3										
165	25.1	25.1	25.4	25.3	26.0	25.5	25.6	25.2										
170	26.9	26.8	27.0	26.9	27.5	27.1	27.2	26.8										
175	28.2	28.0	28.2	28.0	28.5	28.2	28.3	28.0										
180	28.8	28.6	28.7	28.5	28.9	28.6	28.7	28.5										

C Range: 0 - 360DEG
 C Interval: 45.0DEG
 Test Speed: HIGH
 Temperature:27DEG
 Operators:lianghaizhu
 Test Date:2023-04-27

□ Range: 0 - 180DEG
 □ Interval: 1.0DEG
 Test System:EVERFINE GO-2000A_V1 SYSTEM V2.0.364
 Humidity:56%
 Test Distance:6.500m [K=1.0000]
 Remarks: