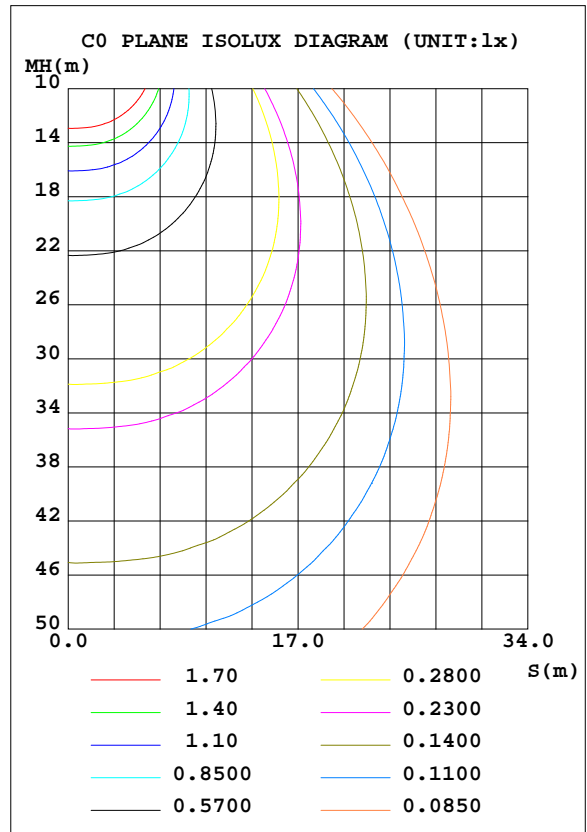
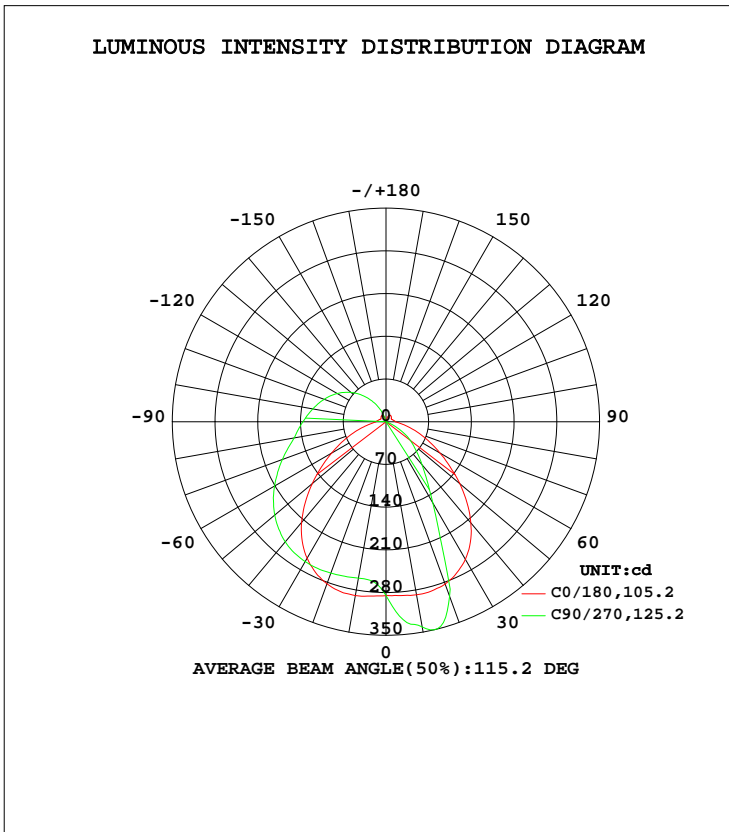


LUMINAIRE PHOTOMETRIC TEST REPORT

Test:U:120.1V I:0.2047A P:24.01W PF:0.9770 Lamp Flux:1130.57x1 lm		
NAME: LED luminaires	TYPE:N/A	WEIGHT:N/A
SPEC.:ASD-LVF24M-4D23CC-BK 3000K	DIM.: N/A	SERIAL No.:N/A
MFR.: ASD Lighting corp	SUR.:N/A	Shielding Angle:N/A

DATA OF LAMP		PHOTOMETRIC DATA Eff: 47.09 lm/W			
MODEL	PSZ2GH221125003-10	I _{max} (cd)	350.6	S/MH(C0/180)	1.33
NOMINAL POWER(W)		LOR(%)	100.0	S/MH(C90/270)	0.95
RATED VOLTAGE(V)	120	TOTAL FLUX(lm)	1130.6	η UP, DN(C0-180)	17.8,53.8
NOMINAL FLUX(lm)	1130.57	CIE CLASS	SEMI-D.	η UP, DN(C180-360)	0.9,27.5
LAMPS INSIDE	1	η up(%)	18.7	CIBSE SHR NOM	1.25
TEST VOLTAGE(V)	120	η down(%)	81.3	CIBSE SHR MAX	1.25



C Range: 0 - 360DEG
 C Interval: 22.5DEG
 Test Speed: HIGH
 Temperature:25.1DEG
 Operators:Evan
 Test Date:2022-11-29

γ Range: 0 - 180DEG
 γ Interval: 1.0DEG
 Test System:EVERFINE GO-R5000_V2 SYSTEM V2.0.351
 Humidity:42%
 Test Distance:2.532m [K=1.0000]
 Remarks:

ZONAL FLUX DIAGRAM

ZONAL FLUX DIAGRAM:

γ	C0	C45	C90	C135	C180	C225	C270	C315	γ	Φ zone	Φ total	%lum, lamp
10	289.2	263.2	260.2	261.8	288.0	336.2	341.3	334.1	0- 10	27.95	27.95	2.47,2.47
20	282.6	265.6	264.0	264.5	282.9	344.6	304.8	342.5	10- 20	84.57	112.5	9.95,9.95
30	258.4	262.8	264.8	262.3	260.3	263.1	154.1	261.6	20- 30	125.2	237.7	21,21
40	215.1	254.0	256.9	253.5	216.4	147.1	92.12	146.9	30- 40	141.0	378.6	33.5,33.5
50	157.7	238.1	237.9	237.2	157.8	86.52	57.22	86.20	40- 50	142.5	521.1	46.1,46.1
60	103.3	215.2	211.0	214.2	102.0	50.58	26.61	50.17	50- 60	130.2	651.3	57.6,57.6
70	60.52	187.4	180.7	186.8	60.16	17.61	2.063	17.12	60- 70	109.6	760.9	67.3,67.3
80	29.93	157.9	152.8	157.7	30.09	2.426	0.1975	2.008	70- 80	87.08	848.0	75,75
90	16.15	137.2	136.3	136.7	15.62	1.458	0.2799	1.249	80- 90	70.86	918.8	81.3,81.3
100	13.46	119.0	121.9	118.7	13.07	0.8670	0.3576	0.6252	90-100	60.07	978.9	86.6,86.6
110	11.27	100.7	108.0	100.8	11.05	0.5190	0.2881	0.3872	100-110	49.88	1029	91,91
120	9.549	82.08	92.65	82.66	9.977	0.1747	0.2281	0.1933	110-120	39.20	1068	94.5,94.5
130	10.91	62.32	74.97	63.52	11.73	0.1762	0.1906	0.1967	120-130	28.61	1097	97,97
140	12.07	42.13	54.30	43.53	12.71	0.2557	0.1904	0.2182	130-140	18.54	1115	98.6,98.6
150	12.41	21.86	32.44	23.49	12.88	1.590	0.2141	0.4552	140-150	10.11	1125	99.5,99.5
160	8.877	5.610	10.92	6.660	9.043	3.337	0.3251	0.6204	150-160	4.316	1130	99.9,99.9
170	1.768	1.948	0.9235	2.244	2.202	1.587	0.3506	0.6182	160-170	0.9477	1130	100,100
180	0.7487	0.7286	0.8020	0.2102	0.7506	0.7478	0.7627	0.5701	170-180	0.0883	1131	100,100
DEG	LUMINOUS INTENSITY:cd									UNIT:lm		

Conical surface Flux(90deg): 450.66 lm

%lum = 39.9%
%lamp = 39.9%

Conical surface Flux(120deg): 651.3 lm

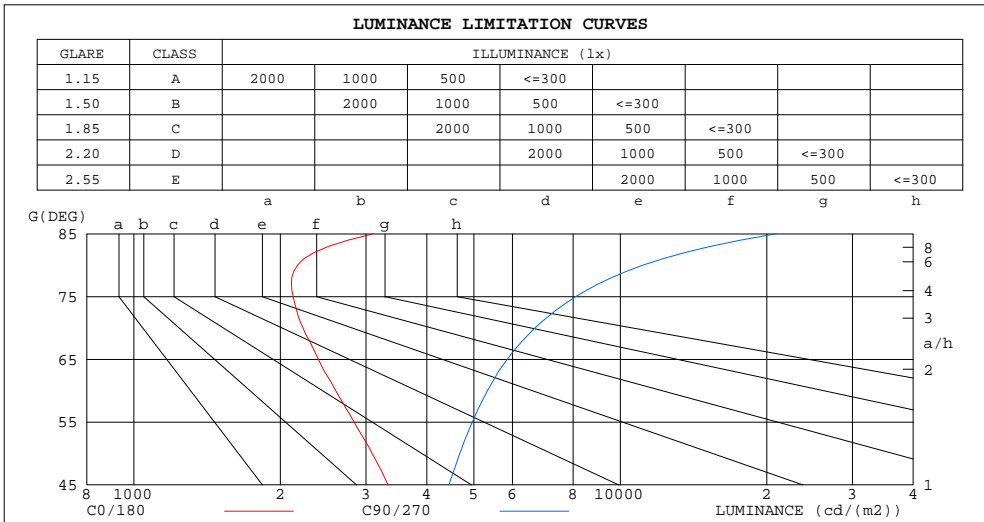
%lum = 57.6%
%lamp = 57.6%

C Range: 0 - 360DEG
C Interval: 22.5DEG
Test Speed: HIGH
Temperature:25.1DEG
Operators:Evan
Test Date:2022-11-29

γ Range: 0 - 180DEG
γ Interval: 1.0DEG
Test System:EVERFINE GO-R5000_V2 SYSTEM V2.0.351
Humidity:42%
Test Distance:2.532m [K=1.0000]
Remarks:

LUMINANCE LIMITATION CURVES

Test:U:120.1V I:0.2047A P:24.01W PF:0.9770 Lamp Flux:1130.57x1 lm		
NAME: LED luminaires	TYPE:N/A	WEIGHT:N/A
SPEC.:ASD-LVF24M-4D23CC-BK 3000K	DIM.: N/A	SERIAL No.:N/A
MFR.: ASD Lighting corp	SUR.:N/A	Shielding Angle:N/A



LUMINANCE cd/(m2)		
G (DEG)	C0/180	C90/270
85	3100	20901
80	2169	11119
75	2126	8103
70	2227	6674
65	2396	5857
60	2600	5332
55	2836	4961
50	3089	4676
45	3331	4442

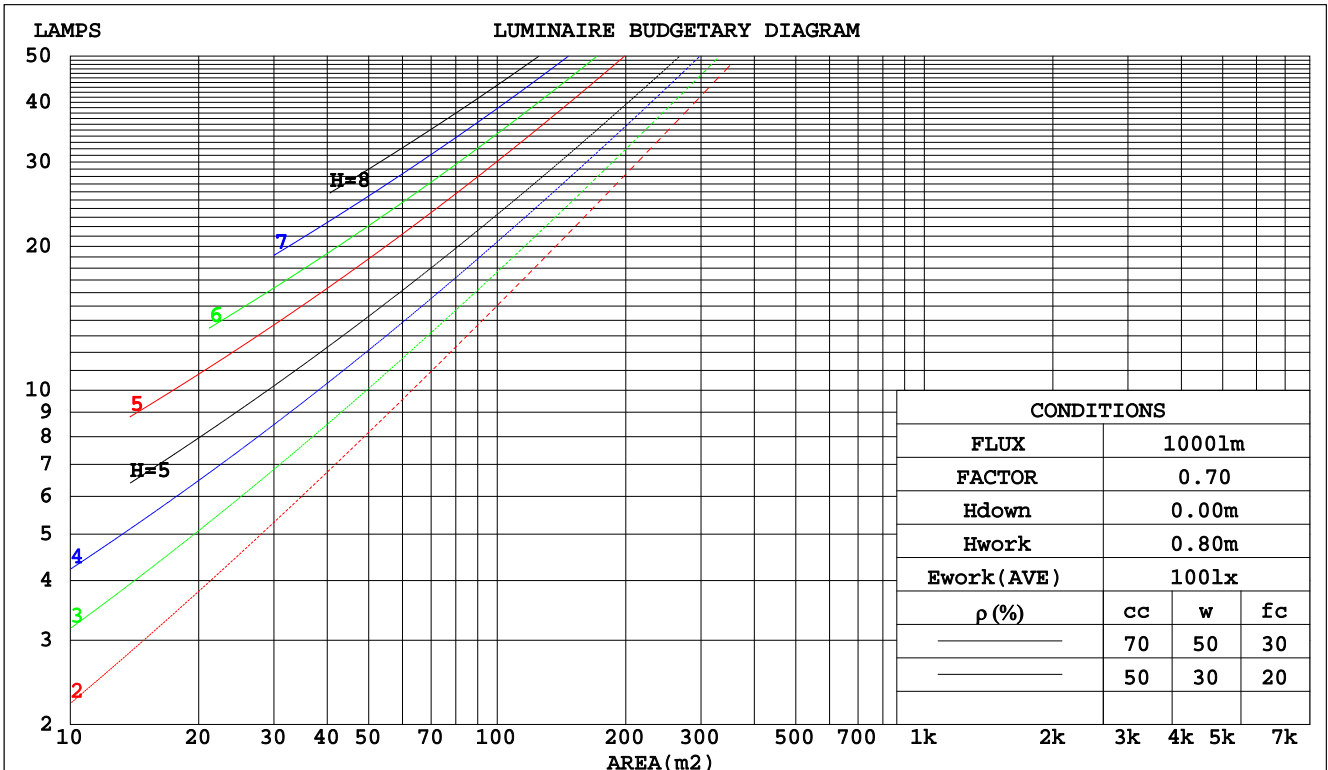
C Range: 0 - 360DEG
 C Interval: 22.5DEG
 Test Speed: HIGH
 Temperature:25.1DEG
 Operators:Evan
 Test Date:2022-11-29

γ Range: 0 - 180DEG
 γ Interval: 1.0DEG
 Test System:EVERFINE GO-R5000_V2 SYSTEM V2.0.351
 Humidity:42%
 Test Distance:2.532m [K=1.0000]
 Remarks:

CU AND LUMINAIRE BUDGETARY ESTIMATE DIAGRAM

Test:U:120.1V I:0.2047A P:24.01W PF:0.9770 Lamp Flux:1130.57x1 lm		
NAME: LED luminaires	TYPE:N/A	WEIGHT:N/A
SPEC.:ASD-LVF24M-4D23CC-BK 3000K	DIM.: N/A	SERIAL No.:N/A
MFR.: ASD Lighting corp	SUR.:N/A	Shielding Angle:N/A

pcc	80%			70%			50%			30%			10%			0
	50%	30%	10%	50%	30%	10%	50%	30%	10%	50%	30%	10%	50%	30%	10%	0
pw																0
pfc	20%			20%			20%			20%			20%			0
RCR	RCR:Room Cavity Ratio Coefficients of Utilization(CU)															
0.0	1.15	1.15	1.15	1.10	1.10	1.10	1.01	1.01	1.01	.92	.92	.92	.85	.85	.85	.81
1.0	.97	.92	.88	.93	.88	.84	.85	.81	.78	.78	.75	.72	.71	.69	.67	.64
2.0	.84	.76	.70	.80	.74	.68	.74	.68	.64	.68	.63	.59	.62	.58	.55	.52
3.0	.73	.65	.58	.70	.63	.56	.65	.58	.53	.59	.54	.50	.54	.50	.46	.43
4.0	.65	.56	.49	.62	.54	.48	.57	.50	.45	.53	.47	.42	.49	.44	.40	.37
5.0	.58	.49	.42	.56	.47	.41	.51	.44	.39	.47	.41	.37	.44	.39	.35	.32
6.0	.52	.43	.37	.50	.42	.36	.46	.39	.34	.43	.37	.32	.40	.35	.30	.28
7.0	.47	.38	.32	.45	.37	.31	.42	.35	.30	.39	.33	.29	.36	.31	.27	.25
8.0	.43	.34	.29	.41	.34	.28	.39	.32	.27	.36	.30	.26	.33	.28	.24	.22
9.0	.39	.31	.26	.38	.30	.25	.36	.29	.24	.33	.27	.23	.31	.26	.22	.20
10.0	.36	.28	.23	.35	.28	.23	.33	.26	.22	.31	.25	.21	.29	.24	.20	.18



C Range: 0 - 360DEG
 C Interval: 22.5DEG
 Test Speed: HIGH
 Temperature:25.1DEG
 Operators:Evan
 Test Date:2022-11-29

γ Range: 0 - 180DEG
 γ Interval: 1.0DEG
 Test System:EVERFINE GO-R5000_V2 SYSTEM V2.0.351
 Humidity:42%
 Test Distance:2.532m [K=1.0000]
 Remarks:

WEC AND CCEC

Test:U:120.1V I:0.2047A P:24.01W PF:0.9770 Lamp Flux:1130.57x1 lm		
NAME: LED luminaires	TYPE:N/A	WEIGHT:N/A
SPEC.:ASD-LVF24M-4D23CC-BK 3000K	DIM.: N/A	SERIAL No.:N/A
MFR.: ASD Lighting corp	SUR.:N/A	Shielding Angle:N/A

ρcc	80%			70%			50%			30%			10%			0
ρw	50%	30%	10%	50%	30%	10%	50%	30%	10%	50%	30%	10%	50%	30%	10%	0
ρfc	20%			20%			20%			20%			20%			0
RCR	RCR:Room Cavity Ratio						Wall Exitance Coefficients(WEC)									
0.0																
1.0	.357	.203	.064	.344	.196	.062	.320	.183	.059	.298	.172	.055	.277	.161	.052	
2.0	.312	.171	.052	.301	.166	.051	.279	.155	.048	.259	.145	.045	.240	.136	.043	
3.0	.280	.149	.045	.269	.144	.043	.250	.135	.041	.231	.127	.039	.215	.119	.037	
4.0	.253	.132	.039	.244	.128	.038	.226	.120	.036	.210	.113	.034	.194	.106	.032	
5.0	.232	.118	.034	.223	.114	.033	.207	.108	.032	.192	.101	.030	.178	.095	.029	
6.0	.213	.107	.031	.205	.104	.030	.191	.098	.028	.177	.092	.027	.164	.086	.026	
7.0	.197	.098	.028	.190	.095	.027	.177	.089	.026	.164	.084	.024	.152	.079	.023	
8.0	.184	.090	.025	.177	.087	.025	.165	.082	.023	.153	.077	.022	.142	.073	.021	
9.0	.172	.083	.023	.166	.081	.023	.154	.076	.022	.143	.072	.021	.133	.068	.020	
10.0	.161	.077	.021	.155	.075	.021	.145	.071	.020	.135	.067	.019	.125	.063	.018	

ρcc	80%			70%			50%			30%			10%			0
ρw	50%	30%	10%	50%	30%	10%	50%	30%	10%	50%	30%	10%	50%	30%	10%	0
ρfc	20%			20%			20%			20%			20%			0
RCR	RCR:Room Cavity Ratio						Ceiling Cavity Exitance Coefficients(CCEC)									
0.0	.333	.333	.333	.285	.285	.285	.194	.194	.194	.112	.112	.112	.036	.036	.036	
1.0	.327	.300	.275	.280	.257	.236	.192	.177	.163	.110	.102	.095	.035	.033	.031	
2.0	.320	.277	.240	.274	.238	.208	.188	.165	.145	.108	.096	.085	.035	.031	.028	
3.0	.312	.260	.219	.267	.224	.189	.184	.156	.133	.106	.091	.078	.034	.030	.026	
4.0	.304	.247	.204	.261	.214	.177	.179	.149	.125	.104	.087	.074	.033	.028	.024	
5.0	.297	.237	.194	.255	.205	.169	.175	.144	.119	.102	.084	.071	.033	.027	.023	
6.0	.289	.229	.186	.249	.199	.162	.172	.139	.115	.100	.082	.068	.032	.027	.023	
7.0	.282	.223	.181	.243	.193	.158	.168	.135	.112	.098	.080	.067	.032	.026	.022	
8.0	.276	.217	.177	.238	.188	.154	.164	.132	.109	.096	.078	.065	.031	.026	.022	
9.0	.270	.212	.174	.233	.184	.151	.161	.130	.108	.094	.077	.064	.030	.025	.021	
10.0	.264	.208	.171	.228	.181	.149	.158	.127	.106	.092	.075	.063	.030	.025	.021	

C Range: 0 - 360DEG
 C Interval: 22.5DEG
 Test Speed: HIGH
 Temperature:25.1DEG
 Operators:Evan
 Test Date:2022-11-29

γ Range: 0 - 180DEG
 γ Interval: 1.0DEG
 Test System:EVERFINE GO-R5000_V2 SYSTEM V2.0.351
 Humidity:42%
 Test Distance:2.532m [K=1.0000]
 Remarks:

UGR(Unified Glare Rating) Table

Test:U:120.1V I:0.2047A P:24.01W PF:0.9770 Lamp Flux:1130.57x1 lm										
NAME: LED luminaires					TYPE:N/A			WEIGHT:N/A		
SPEC.:ASD-LVF24M-4D23CC-BK 3000K					DIM.: N/A			SERIAL No.:N/A		
MFR.: ASD Lighting corp					SUR.:N/A			Shielding Angle:N/A		
ceiling/cavity	0.7	0.7	0.5	0.5	0.3	0.7	0.7	0.5	0.5	0.3
walls	0.5	0.3	0.5	0.3	0.3	0.5	0.3	0.5	0.3	0.3
working plane	0.2	0.2	0.2	0.2	0.2	0.2	0.2	0.2	0.2	0.2
Room dimensions	Viewed crosswise					Viewed endwise				
x = 2H y = 2H	17.0	18.3	17.5	18.8	19.4	18.8	20.1	19.3	20.6	21.2
3H	18.7	19.9	19.2	20.4	21.0	21.3	22.5	21.9	23.1	23.7
4H	19.4	20.5	19.9	21.1	21.7	22.7	23.9	23.3	24.4	25.1
6H	19.9	21.0	20.5	21.6	22.2	24.3	25.3	24.8	25.9	26.6
8H	20.1	21.2	20.7	21.8	22.4	25.1	26.2	25.7	26.8	27.4
12H	20.4	21.3	21.0	21.9	22.6	26.2	27.2	26.8	27.8	28.4
4H 2H	18.4	19.6	19.0	20.1	20.8	19.6	20.7	20.2	21.3	21.9
3H	20.6	21.6	21.2	22.2	22.8	22.4	23.4	23.0	24.0	24.7
4H	21.6	22.5	22.2	23.2	23.9	24.0	24.9	24.6	25.5	26.2
6H	22.5	23.3	23.2	24.0	24.7	25.7	26.5	26.4	27.2	27.9
8H	22.9	23.7	23.6	24.3	25.1	26.7	27.4	27.4	28.1	28.9
12H	23.2	23.9	23.9	24.6	25.4	27.8	28.5	28.5	29.2	30.0
8H 4H	22.8	23.6	23.5	24.2	25.0	24.6	25.3	25.2	26.0	26.8
6H	24.3	24.9	25.0	25.6	26.4	26.6	27.3	27.3	27.9	28.8
8H	25.0	25.6	25.7	26.3	27.1	27.8	28.4	28.5	29.1	29.9
12H	25.6	26.1	26.4	26.9	27.7	29.2	29.7	29.9	30.4	31.3
12H 4H	23.1	23.8	23.8	24.5	25.3	24.7	25.4	25.3	26.0	26.8
6H	24.8	25.4	25.5	26.1	26.9	26.9	27.4	27.6	28.1	29.0
8H	25.8	26.3	26.5	27.0	27.8	28.2	28.7	28.9	29.4	30.3
Variations with the observer position at spacings:										
S = 1.0H	+ 0.1 / - 0.1					+ 0.1 / - 0.1				
1.5H	+ 0.2 / - 0.3					+ 0.2 / - 0.3				
2.0H	+ 0.3 / - 0.5					+ 0.3 / - 0.4				

CIE Pub.117 Corrected 1131 lm Total Lamp Luminous Flux.(8log(F/F0) = 0.4)

C Range: 0 - 360DEG
 C Interval: 22.5DEG
 Test Speed: HIGH
 Temperature:25.1DEG
 Operators:Evan
 Test Date:2022-11-29

γ Range: 0 - 180DEG
 γ Interval: 1.0DEG
 Test System:EVERFINE GO-R5000_V2 SYSTEM V2.0.351
 Humidity:42%
 Test Distance:2.532m [K=1.0000]
 Remarks:

UTILIZATION FACTORS TABLE

Test:U:120.1V I:0.2047A P:24.01W PF:0.9770 Lamp Flux:1130.57x1 lm		
NAME: LED luminaires	TYPE:N/A	WEIGHT:N/A
SPEC.:ASD-LVF24M-4D23CC-BK 3000K	DIM.: N/A	SERIAL No.:N/A
MFR.: ASD Lighting corp	SUR.:N/A	Shielding Angle:N/A

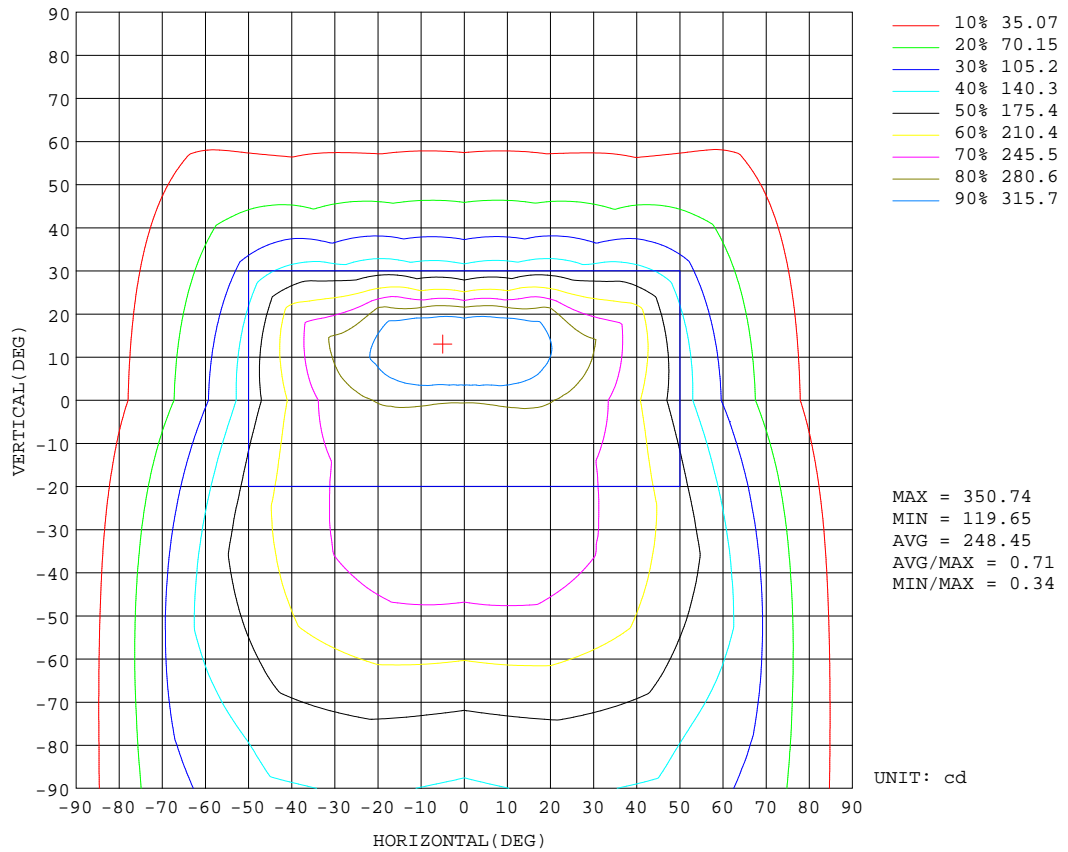
REFLECTANCE										
Ceiling	0.8	0.8	0.8	0.7	0.7	0.7	0.5	0.5	0.5	0
Walls	0.7	0.5	0.3	0.7	0.5	0.3	0.7	0.5	0.3	0
Working plane	0.2	0.2	0.2	0.2	0.2	0.2	0.2	0.2	0.2	0
ROOM INDEX	UTILIZATION FACTORS(PERCENT) $k(RI) \times RCR = 5$									
k = 0.60	50	39	32	49	38	31	47	37	31	24
0.80	60	47	40	58	47	39	55	45	38	31
1.00	67	55	47	65	54	47	62	54	45	37
1.25	74	62	54	72	61	53	67	58	52	42
1.50	79	68	59	76	66	58	71	63	56	46
2.00	86	76	68	83	73	66	77	69	63	52
2.50	90	81	73	87	78	71	80	73	68	55
3.00	94	85	78	90	82	76	83	77	72	59
4.00	98	91	85	94	88	82	87	82	77	63
5.00	101	94	89	97	91	86	89	85	81	66
ROOM INDEX	UF(total)									Direct
According to DIN EN 13032-2 2004			Suspended				SHRNOM = 1.25			

C Range: 0 - 360DEG
 C Interval: 22.5DEG
 Test Speed: HIGH
 Temperature:25.1DEG
 Operators:Evan
 Test Date:2022-11-29

γ Range: 0 - 180DEG
 γ Interval: 1.0DEG
 Test System:EVERFINE GO-R5000_V2 SYSTEM V2.0.351
 Humidity:42%
 Test Distance:2.532m [K=1.0000]
 Remarks:

ISOCANDELA DIAGRAM

Test:U:120.1V I:0.2047A P:24.01W PF:0.9770 Lamp Flux:1130.57x1 lm		
NAME: LED luminaires	TYPE:N/A	WEIGHT:N/A
SPEC.:ASD-LVF24M-4D23CC-BK 3000K	DIM.: N/A	SERIAL No.:N/A
MFR.: ASD Lighting corp	SUR.:N/A	Shielding Angle:N/A

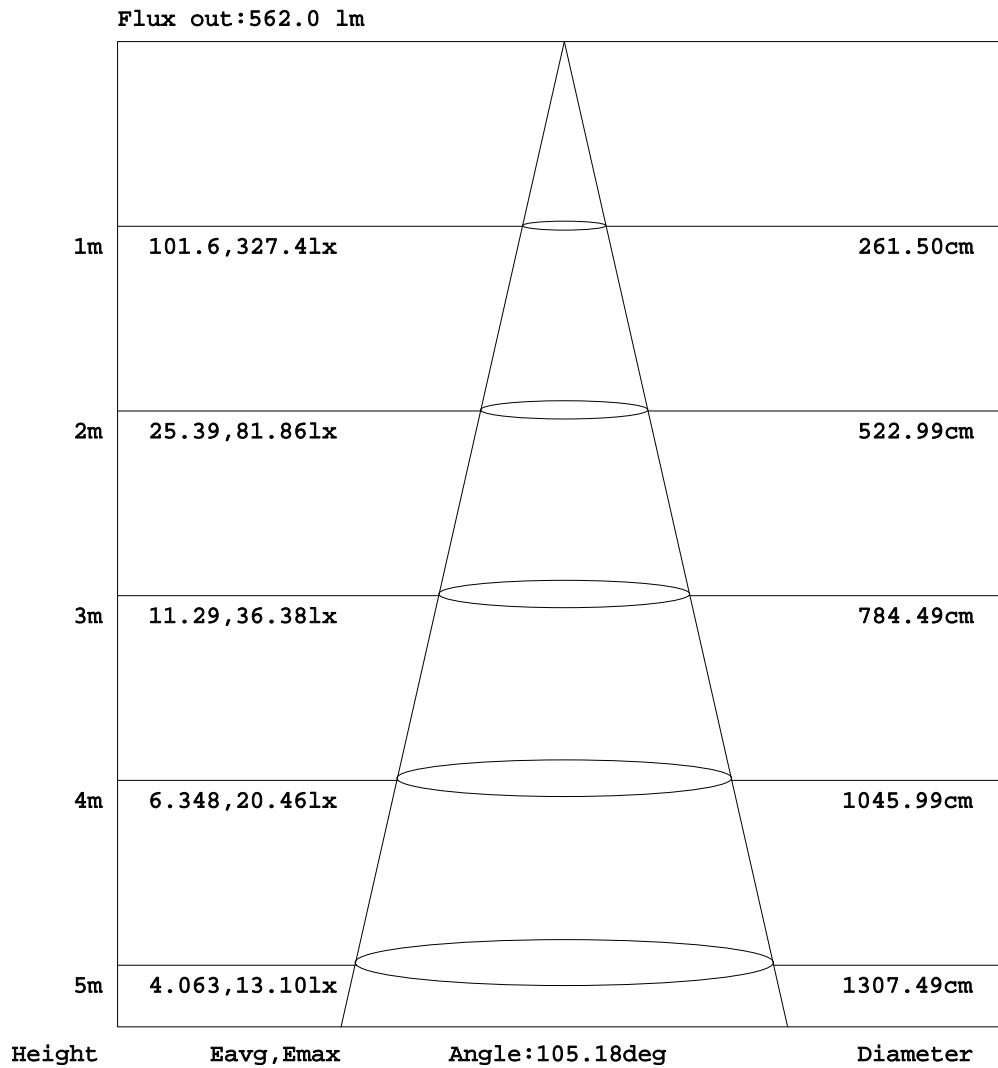


C Range: 0 - 360DEG
 C Interval: 22.5DEG
 Test Speed: HIGH
 Temperature:25.1DEG
 Operators:Evan
 Test Date:2022-11-29

γ Range: 0 - 180DEG
 γ Interval: 1.0DEG
 Test System:EVERFINE GO-R5000_V2 SYSTEM V2.0.351
 Humidity:42%
 Test Distance:2.532m [K=1.0000]
 Remarks:

AAI Figure

Test:U:120.1V I:0.2047A P:24.01W PF:0.9770 Lamp Flux:1130.57x1 lm		
NAME: LED luminaires	TYPE:N/A	WEIGHT:N/A
SPEC.:ASD-LVF24M-4D23CC-BK 3000K	DIM.: N/A	SERIAL No.:N/A
MFR.: ASD Lighting corp	SUR.:N/A	Shielding Angle:N/A



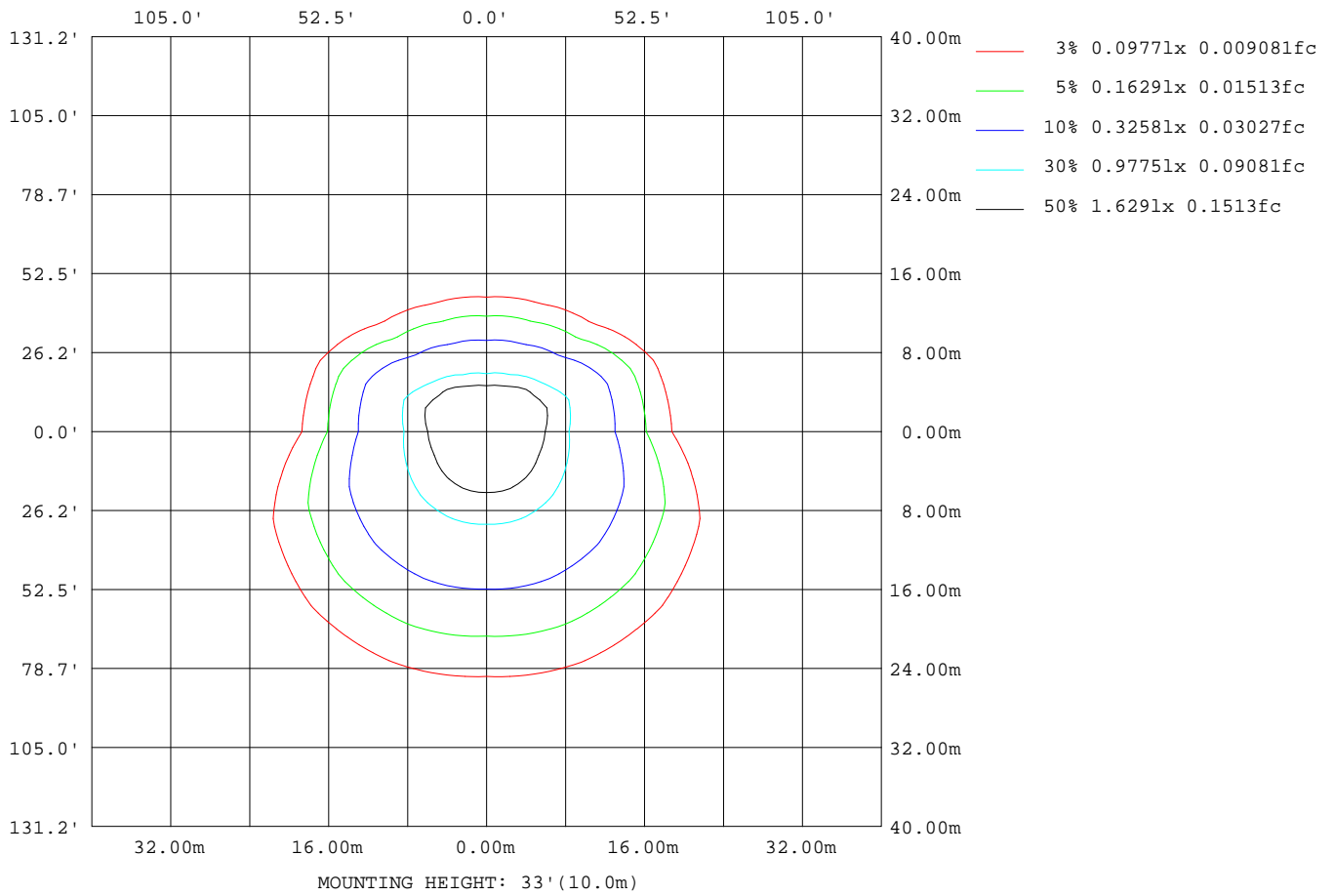
Note:The Curves indicate the illuminated area and the average illumination when the luminaire is at different distance.

C Range: 0 - 360DEG
 C Interval: 22.5DEG
 Test Speed: HIGH
 Temperature:25.1DEG
 Operators:Evan
 Test Date:2022-11-29

γ Range: 0 - 180DEG
 γ Interval: 1.0DEG
 Test System:EVERFINE GO-R5000_V2 SYSTEM V2.0.351
 Humidity:42%
 Test Distance:2.532m [K=1.0000]
 Remarks:

ISOLUX DIAGRAM

Test:U:120.1V I:0.2047A P:24.01W PF:0.9770 Lamp Flux:1130.57x1 lm		
NAME: LED luminaires	TYPE:N/A	WEIGHT:N/A
SPEC.:ASD-LVF24M-4D23CC-BK 3000K	DIM.: N/A	SERIAL No.:N/A
MFR.: ASD Lighting corp	SUR.:N/A	Shielding Angle:N/A



C Range: 0 - 360DEG
 C Interval: 22.5DEG
 Test Speed: HIGH
 Temperature:25.1DEG
 Operators:Evan
 Test Date:2022-11-29

γ Range: 0 - 180DEG
 γ Interval: 1.0DEG
 Test System:EVERFINE GO-R5000_V2 SYSTEM V2.0.351
 Humidity:42%
 Test Distance:2.532m [K=1.0000]
 Remarks:

LED Avg.L Report

Test:U:120.1V I:0.2047A P:24.01W PF:0.9770 Lamp Flux:1130.57x1 lm		
NAME: LED luminaires	TYPE:N/A	WEIGHT:N/A
SPEC.:ASD-LVF24M-4D23CC-BK 3000K	DIM.: N/A	SERIAL No.:N/A
MFR.: ASD Lighting corp	SUR.:N/A	Shielding Angle:N/A

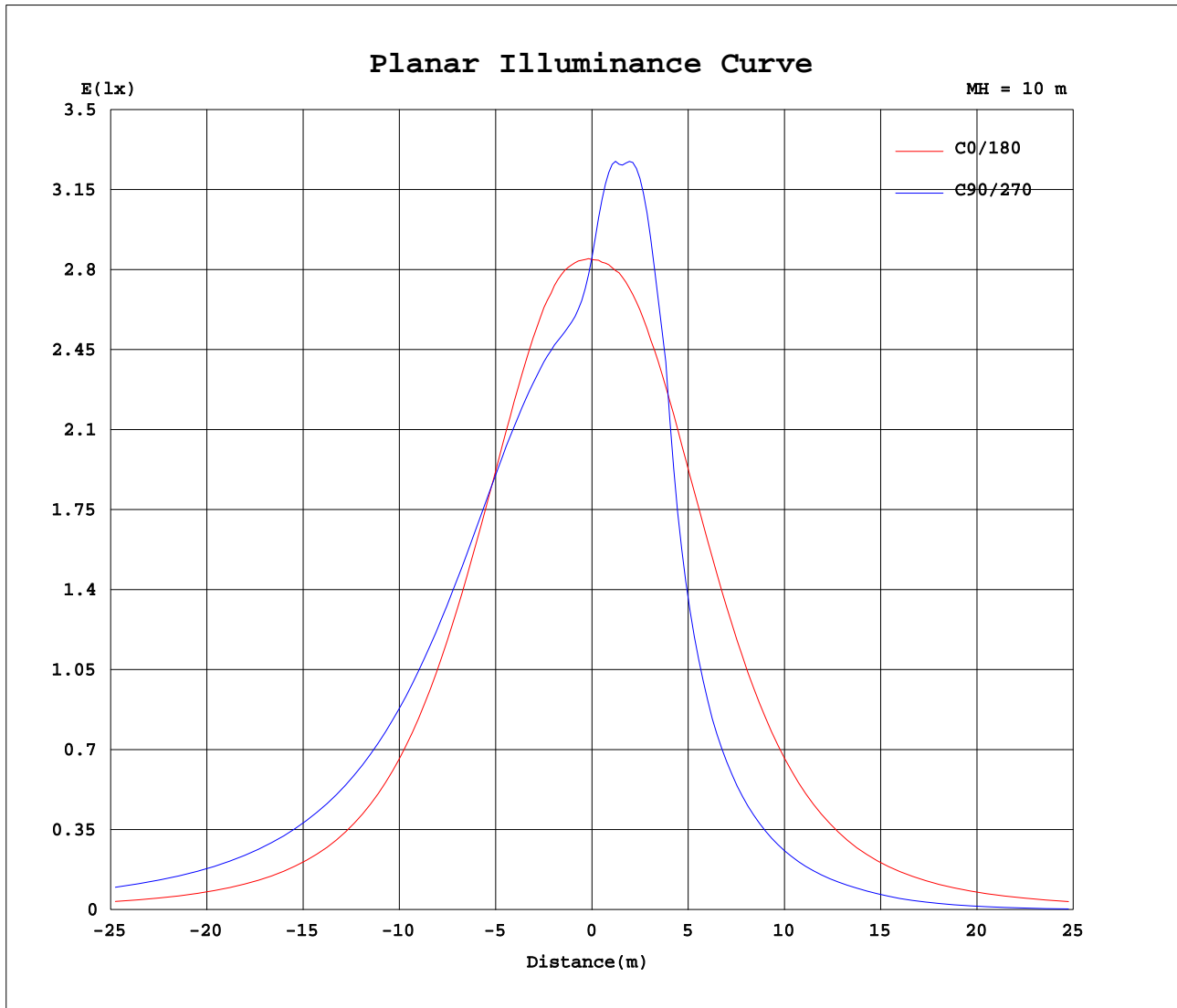
AvgL	cd/m2
L_0~180(65)av	2385
L_0~180(75)av	2129
L_0~180(85)av	3096
L_90~270(65)av	3118
L_90~270(75)av	4048
L_90~270(85)av	10447
L_45(65)av	3511
L_45(75)av	4313
L_45(85)av	10728

Standard: GB/T 29293-2012

C Range: 0 - 360DEG
 C Interval: 22.5DEG
 Test Speed: HIGH
 Temperature:25.1DEG
 Operators:Evan
 Test Date:2022-11-29

γ Range: 0 - 180DEG
 γ Interval: 1.0DEG
 Test System:EVERFINE GO-R5000_V2 SYSTEM V2.0.351
 Humidity:42%
 Test Distance:2.532m [K=1.0000]
 Remarks:

Planar Illuminance Curve



C Range: 0 - 360DEG
 C Interval: 22.5DEG
 Test Speed: HIGH
 Temperature: 25.1DEG
 Operators: Evan
 Test Date: 2022-11-29

γ Range: 0 - 180DEG
 γ Interval: 1.0DEG
 Test System: EVERFINE GO-R5000_V2 SYSTEM V2.0.351
 Humidity: 42%
 Test Distance: 2.532m [K=1.0000]
 Remarks:

LUMINOUS DISTRIBUTION INTENSITY DATA

Test:U:120.1V I:0.2047A P:24.01W PF:0.9770 Lamp Flux:1130.57x1 lm		
NAME: LED luminaires	TYPE:N/A	WEIGHT:N/A
SPEC.:ASD-LVF24M-4D23CC-BK 3000K	DIM.: N/A	SERIAL No.:N/A
MFR.: ASD Lighting corp	SUR.:N/A	Shielding Angle:N/A

Table--1

UNIT: cd

C(DEG)\ γ (DEG)	0	22.5	45	67.5	90	112.5	135	157.5	180	202.5	225	247.5	270	292.5	315	337.5			
0	285	285	285	285	285	285	285	285	285	285	285	285	285	285	285	285			
5	287	274	267	264	262	263	266	273	286	303	316	324	326	323	317	303			
10	289	269	263	261	260	260	262	267	288	320	336	339	341	338	334	319			
15	288	266	265	264	262	263	263	265	287	329	344	350	347	350	342	324			
20	283	263	266	266	264	265	265	262	283	324	345	321	305	321	342	317			
25	273	258	265	267	265	266	264	257	274	314	318	244	211	244	316	307			
30	258	252	263	267	265	266	262	251	260	300	263	176	154	176	262	294			
35	239	243	259	265	262	265	259	243	241	278	195	132	117	132	194	273			
40	215	233	254	261	257	260	253	233	216	249	147	103	92.1	103	147	246			
45	187	222	247	254	249	253	246	222	188	218	112	80.8	72.8	80.9	112	216			
50	158	210	238	245	238	244	237	209	158	170	86.5	63.2	57.2	63.3	86.2	169			
55	129	196	227	233	225	232	226	196	128	129	66.9	48.5	43.3	48.5	66.5	129			
60	103	182	215	220	211	219	214	181	102	97.3	50.6	32.0	26.6	32.1	50.2	97.9			
65	80.5	167	202	206	196	205	201	167	79.4	74.0	34.4	16.8	13.1	16.8	34.0	74.4			
70	60.5	152	187	191	181	190	187	152	60.2	55.8	17.6	4.70	2.06	4.71	17.1	56.0			
75	43.7	137	173	176	166	176	172	137	43.7	39.3	4.69	0.16	0.18	0.18	4.29	39.4			
80	29.9	121	158	162	153	162	158	122	30.1	22.2	2.43	0.19	0.20	0.20	2.01	22.4			
85	21.5	106	147	153	144	152	146	107	21.3	16.7	2.06	0.22	0.23	0.24	1.77	16.9			
90	16.1	96.2	137	145	136	144	137	96.8	15.6	10.9	1.46	0.25	0.28	0.27	1.25	12.2			
95	15.3	87.3	128	136	129	136	128	87.5	14.6	7.43	0.99	0.28	0.34	0.29	0.82	7.10			
100	13.5	78.2	119	128	122	128	119	78.4	13.1	7.52	0.87	0.29	0.36	0.30	0.63	7.31			
105	12.3	69.2	110	120	115	120	110	69.6	11.9	6.94	0.70	0.26	0.32	0.28	0.49	6.91			
110	11.3	60.1	101	112	108	112	101	60.7	11.1	6.78	0.52	0.24	0.29	0.26	0.39	6.45			
115	10.2	51.5	91.4	103	101	103	91.9	52.5	10.2	7.28	0.33	0.21	0.25	0.24	0.24	6.86			
120	9.55	43.6	82.1	94.3	92.7	94.7	82.7	44.9	9.98	7.41	0.17	0.20	0.23	0.21	0.19	7.05			
125	9.99	36.1	72.4	84.8	84.0	85.4	73.3	37.7	10.9	6.88	0.17	0.19	0.20	0.20	0.19	6.44			
130	10.9	28.7	62.3	74.7	75.0	75.4	63.5	30.4	11.7	6.48	0.18	0.18	0.19	0.20	0.20	5.98			
135	11.6	21.7	52.1	63.9	65.0	65.0	53.4	23.4	12.3	6.19	0.18	0.18	0.19	0.19	0.20	5.54			
140	12.1	15.6	42.1	52.7	54.3	53.6	43.5	17.1	12.7	6.03	0.26	0.18	0.19	0.20	0.22	4.88			
145	12.3	11.6	31.8	41.6	43.4	42.6	33.5	12.2	12.9	6.10	0.76	0.19	0.20	0.20	0.34	3.83			
150	12.4	10.3	21.9	30.3	32.4	31.3	23.5	10.8	12.9	7.58	1.59	0.24	0.21	0.22	0.46	2.81			
155	11.4	9.22	12.5	19.4	21.5	20.4	14.0	10.1	12.0	9.00	2.66	0.46	0.25	0.26	0.47	2.92			
160	8.88	7.13	5.61	9.16	10.9	9.94	6.66	8.08	9.04	8.86	3.34	1.00	0.33	0.29	0.62	2.33			
165	4.98	4.87	3.16	2.38	2.02	2.26	3.35	5.81	4.56	4.42	2.52	0.75	0.46	0.33	0.58	1.33			
170	1.77	2.77	1.95	1.22	0.92	1.48	2.24	2.20	2.20	2.22	1.59	0.78	0.35	0.41	0.62	0.64			
175	0.54	0.79	1.11	0.85	0.84	0.85	0.81	0.89	0.43	0.44	0.41	0.41	0.42	0.47	0.43	0.45			
180	0.75	0.94	0.73	0.76	0.80	0.00	0.21	0.51	0.75	0.75	0.75	0.75	0.76	0.57	0.57	0.60			

C Range: 0 - 360DEG
 C Interval: 22.5DEG
 Test Speed: HIGH
 Temperature:25.1DEG
 Operators:Evan
 Test Date:2022-11-29

γ Range: 0 - 180DEG
 γ Interval: 1.0DEG
 Test System:EVERFINE GO-R5000_V2 SYSTEM V2.0.351
 Humidity:42%
 Test Distance:2.532m [K=1.0000]
 Remarks: