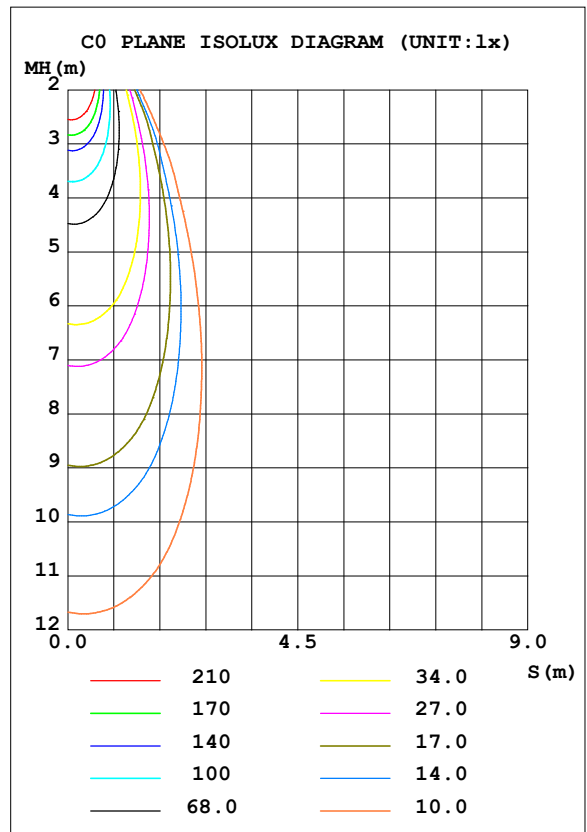
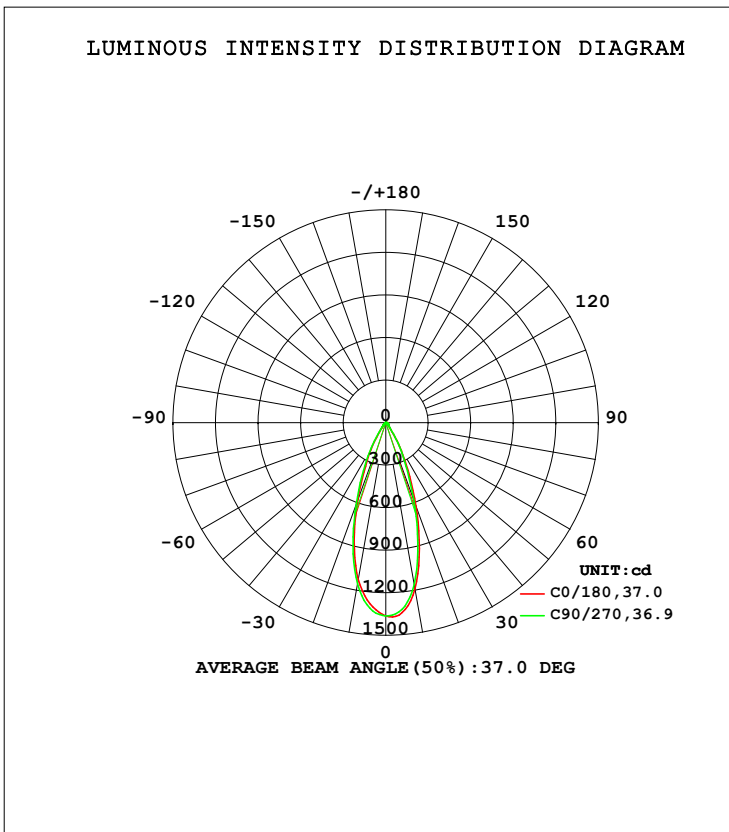


LUMINAIRE PHOTOMETRIC TEST REPORT

Test:U:120.06V I:0.0685A P:7.6861W PF:0.9532 Freq:59.98Hz Lamp Flux:643.352x1 lm		
NAME: ASD-CD-TR-2D8AC-WH	TYPE:	WEIGHT:
SPEC.:4000K 90	DIM.:	SERIAL No.:
MFR.: ASD Lighting Corp	SUR.:	Shielding Angle:

DATA OF LAMP		PHOTOMETRIC DATA Eff: 83.70 lm/W			
MODEL		I _{max} (cd)	1371	S/MH (C0/180)	0.59
NOMINAL POWER (W)	8	LOR (%)	100.0	S/MH (C90/270)	0.61
RATED VOLTAGE (V)	120	TOTAL FLUX (lm)	643.35	<input type="checkbox"/> UP, DN (C0-180)	0.0, 50.5
NOMINAL FLUX (lm)	643.352	CIE CLASS	DIRECT	<input type="checkbox"/> UP, DN (C180-360)	0.0, 49.5
LAMPS INSIDE	1	<input type="checkbox"/> up (%)	0.0	CIBSE SHR NOM	0.50
TEST VOLTAGE (V)	120	<input type="checkbox"/> down (%)	100.0	CIBSE SHR MAX	0.65



C Range: 0 - 360DEG
 C Interval: 22.5DEG
 Test Speed: HIGH
 Temperature: 25.3DEG
 Operators:
 Test Date: 2021-10-19

Range: 0 - 90DEG
 Interval: 1.0DEG
 Test System: EVERFINE GO-SPEX500_V1 SYSTEM V2.00.421
 Humidity: 65.0%
 Test Distance: 3.080m [K=1.0000]
 Remarks:

ZONAL FLUX DIAGRAM

ZONAL FLUX DIAGRAM:

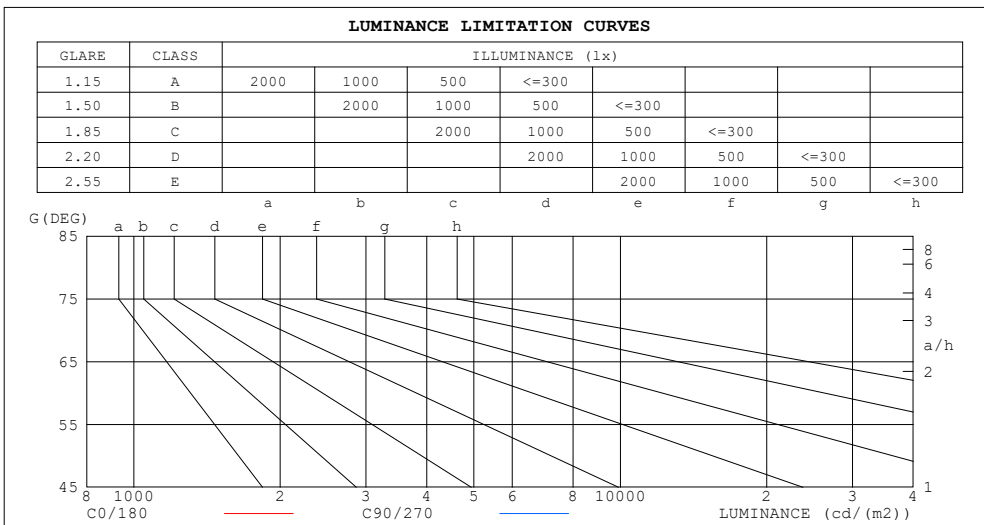
mm	C0	C45	C90	C135	C180	C225	C270	C315	mm	□ zone	□ total	%lum, lamp
10	1190	1185	1158	1133	1123	1138	1155	1186	0- 10	120.6	120.6	18.8,18.8
20	625.0	652.2	574.4	575.7	577.2	590.9	611.8	638.1	10- 20	243.9	364.6	56.7,56.7
30	203.0	232.1	196.4	200.1	191.2	195.3	208.6	213.0	20- 30	170.3	534.9	83.1,83.1
40	40.14	45.81	43.55	41.27	39.35	42.29	43.65	42.17	30- 40	58.65	593.5	92.3,92.3
50	22.80	22.64	22.28	22.02	21.87	21.89	22.23	22.75	40- 50	23.32	616.8	95.9,95.9
60	12.03	11.96	11.55	11.46	11.34	11.34	10.86	11.84	50- 60	14.63	631.5	98.2,98.2
70	6.475	5.739	4.679	5.289	5.775	5.184	4.469	5.530	60- 70	8.228	639.7	99.4,99.4
80	2.500	1.181	0.5191	0.9886	2.048	0.9964	0.4875	1.058	70- 80	3.322	643.0	99.9,99.9
90	0.0124	0.0090	0.0063	0.0067	0.0197	0.0137	0.0113	0.0157	80- 90	0.3237	643.4	100,100
100									90-100			
110									100-110			
120									110-120			
130									120-130			
140									130-140			
150									140-150			
160									150-160			
170									160-170			
180									170-180			
DEG	LUMINOUS INTENSITY:cd									UNIT:lm		

C Range: 0 - 360DEG
 C Interval: 22.5DEG
 Test Speed: HIGH
 Temperature:25.3DEG
 Operators:
 Test Date:2021-10-19

□ Range: 0 - 90DEG
 □ Interval: 1.0DEG
 Test System:EVERFINE GO-SPEX500_V1 SYSTEM V2.00.421
 Humidity:65.0%
 Test Distance:3.080m [K=1.0000]
 Remarks:

LUMINANCE LIMITATION CURVES

Test:U:120.06V I:0.0685A P:7.6861W PF:0.9532 Freq:59.98Hz Lamp Flux:643.352x1 lm		
NAME: ASD-CD-TR-2D8AC-WH	TYPE:	WEIGHT:
SPEC.:4000K 90	DIM.:	SERIAL No.:
MFR.: ASD Lighting Corp	SUR.:	Shielding Angle:



LUMINANCE cd/(m2)		
G (DEG)	C0/180	C90/270
85	45	5
80	130	27
75	149	80
70	170	123
65	193	166
60	217	208
55	260	253
50	319	312
45	376	374

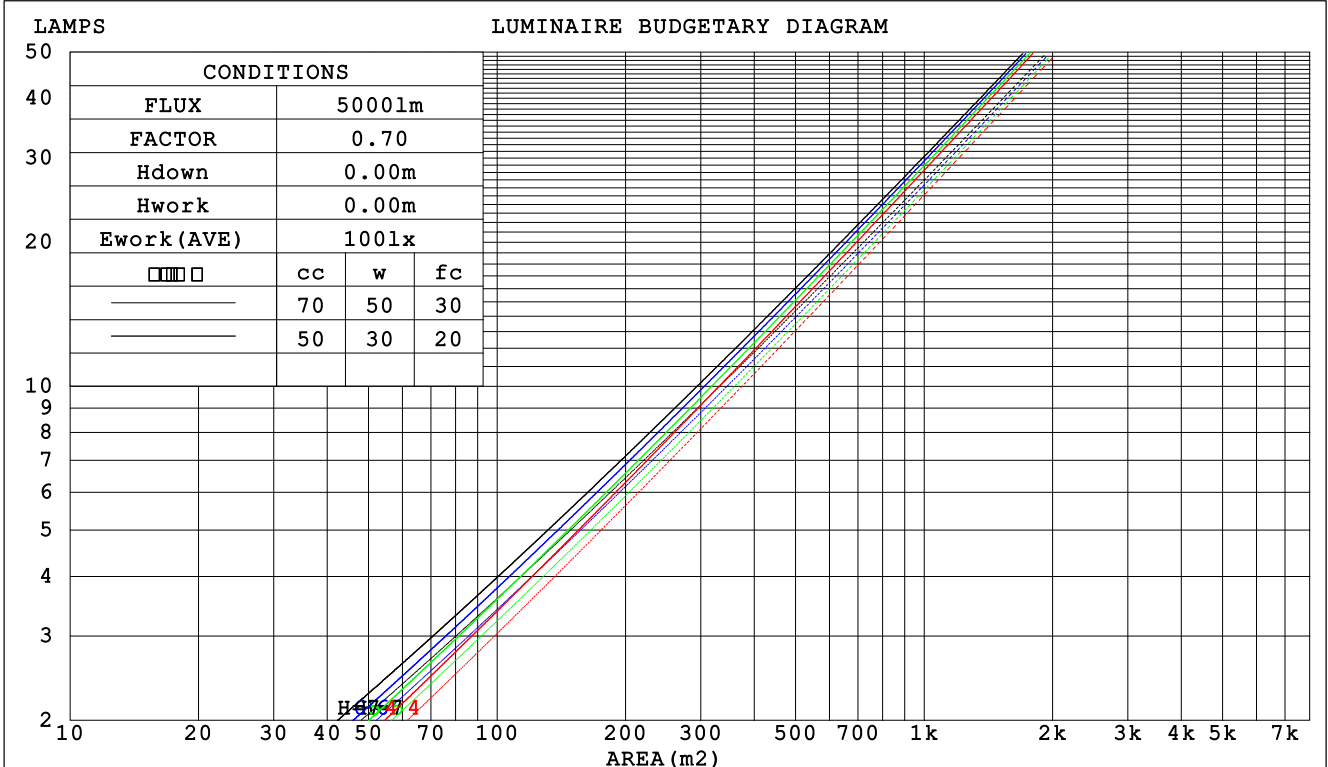
C Range: 0 - 360DEG
 C Interval: 22.5DEG
 Test Speed: HIGH
 Temperature:25.3DEG
 Operators:
 Test Date:2021-10-19

Range: 0 - 90DEG
 Interval: 1.0DEG
 Test System:EVERFINE GO-SPEX500_V1 SYSTEM V2.00.421
 Humidity:65.0%
 Test Distance:3.080m [K=1.0000]
 Remarks:

CU AND LUMINAIRE BUDGETARY ESTIMATE DIAGRAM

Test:U:120.06V I:0.0685A P:7.6861W PF:0.9532 Freq:59.98Hz Lamp Flux:643.352x1 lm		
NAME: ASD-CD-TR-2D8AC-WH	TYPE:	WEIGHT:
SPEC.:4000K 90	DIM.:	SERIAL No.:
MFR.: ASD Lighting Corp	SUR.:	Shielding Angle:

□cc	80%			70%			50%			30%			10%			0
□w	50%	30%	10%	50%	30%	10%	50%	30%	10%	50%	30%	10%	50%	30%	10%	0
□fc	20%			20%			20%			20%			20%			0
RCR	RCR:Room Cavity Ratio						Coefficients of Utilization(CU)									
0.0	1.19	1.19	1.19	1.16	1.16	1.16	1.11	1.11	1.11	1.06	1.06	1.06	1.02	1.02	1.02	.00
1.0	1.11	1.09	1.07	1.09	1.07	1.05	1.05	1.03	1.02	1.01	1.00	.99	.98	.97	.96	.94
2.0	1.04	1.01	.97	1.03	.99	.96	.99	.97	.94	.97	.94	.92	.94	.92	.90	.89
3.0	.98	.94	.90	.97	.93	.89	.94	.91	.88	.92	.89	.87	.90	.87	.85	.84
4.0	.93	.88	.84	.92	.87	.83	.90	.86	.82	.88	.84	.82	.86	.83	.81	.79
5.0	.88	.83	.79	.87	.82	.78	.85	.81	.78	.84	.80	.77	.82	.79	.76	.75
6.0	.84	.78	.74	.83	.78	.74	.81	.77	.74	.80	.76	.73	.79	.75	.73	.71
7.0	.80	.74	.71	.79	.74	.70	.78	.73	.70	.77	.73	.70	.76	.72	.69	.68
8.0	.76	.71	.67	.75	.70	.67	.74	.70	.67	.73	.69	.66	.73	.69	.66	.65
9.0	.73	.67	.64	.72	.67	.64	.71	.67	.64	.71	.66	.63	.70	.66	.63	.62
10.0	.70	.65	.61	.69	.64	.61	.69	.64	.61	.68	.64	.61	.67	.63	.61	.59



C Range: 0 - 360DEG
 C Interval: 22.5DEG
 Test Speed: HIGH
 Temperature:25.3DEG
 Operators:
 Test Date:2021-10-19

□ Range: 0 - 90DEG
 □ Interval: 1.0DEG
 Test System:EVERFINE GO-SPEX500_V1 SYSTEM V2.00.421
 Humidity:65.0%
 Test Distance:3.080m [K=1.0000]
 Remarks:

WEC AND CCEC

Test:U:120.06V I:0.0685A P:7.6861W PF:0.9532 Freq:59.98Hz Lamp Flux:643.352x1 lm		
NAME: ASD-CD-TR-2D8AC-WH	TYPE:	WEIGHT:
SPEC.:4000K 90	DIM.:	SERIAL No.:
MFR.: ASD Lighting Corp	SUR.:	Shielding Angle:

<input type="checkbox"/> cc	80%	70%	50%	30%	10%	0
<input type="checkbox"/> w	50% 30% 10%	50% 30% 10%	50% 30% 10%	50% 30% 10%	50% 30% 10%	0
<input type="checkbox"/> fc	20%	20%	20%	20%	20%	0
RCR	RCR:Room Cavity Ratio		Wall Exitance Coefficients (WEC)			
0.0						
1.0	.167 .095 .030	.160 .092 .029	.148 .085 .027	.136 .079 .025	.126 .073 .023	
2.0	.158 .087 .027	.153 .084 .026	.142 .079 .025	.132 .074 .023	.123 .070 .022	
3.0	.149 .079 .024	.144 .077 .023	.136 .073 .022	.127 .070 .021	.120 .066 .021	
4.0	.141 .073 .022	.137 .072 .021	.129 .068 .020	.122 .066 .020	.116 .063 .019	
5.0	.133 .068 .020	.130 .067 .019	.123 .064 .019	.117 .062 .018	.111 .059 .018	
6.0	.126 .063 .018	.123 .062 .018	.118 .060 .018	.112 .058 .017	.107 .056 .017	
7.0	.120 .059 .017	.118 .059 .017	.113 .057 .016	.108 .055 .016	.103 .054 .016	
8.0	.115 .056 .016	.112 .055 .016	.108 .054 .015	.104 .053 .015	.100 .051 .015	
9.0	.110 .053 .015	.108 .052 .015	.104 .051 .015	.100 .050 .014	.096 .049 .014	
10.0	.105 .050 .014	.103 .050 .014	.100 .049 .014	.096 .048 .014	.093 .047 .013	

<input type="checkbox"/> cc	80%	70%	50%	30%	10%	0
<input type="checkbox"/> w	50% 30% 10%	50% 30% 10%	50% 30% 10%	50% 30% 10%	50% 30% 10%	0
<input type="checkbox"/> fc	20%	20%	20%	20%	20%	0
RCR	RCR:Room Cavity Ratio		Ceiling Cavity Exitance Coefficients (CCEC)			
0.0	.190 .190 .190	.163 .163 .163	.111 .111 .111	.064 .064 .064	.020 .020 .020	
1.0	.170 .157 .146	.146 .135 .125	.100 .093 .087	.057 .054 .050	.018 .017 .016	
2.0	.154 .133 .114	.132 .114 .099	.091 .079 .069	.052 .046 .040	.017 .015 .013	
3.0	.141 .113 .091	.121 .098 .079	.083 .068 .056	.048 .040 .033	.015 .013 .011	
4.0	.130 .099 .074	.112 .085 .065	.077 .059 .046	.044 .035 .027	.014 .011 .009	
5.0	.121 .087 .062	.104 .075 .054	.071 .052 .038	.041 .031 .022	.013 .010 .007	
6.0	.113 .077 .052	.097 .067 .045	.067 .047 .032	.039 .028 .019	.013 .009 .006	
7.0	.106 .069 .044	.091 .060 .038	.063 .042 .027	.037 .025 .016	.012 .008 .005	
8.0	.100 .063 .038	.086 .055 .033	.059 .038 .023	.035 .023 .014	.011 .007 .005	
9.0	.094 .058 .033	.081 .050 .029	.056 .035 .020	.033 .021 .012	.011 .007 .004	
10.0	.090 .053 .029	.077 .046 .025	.054 .032 .018	.031 .019 .011	.010 .006 .004	

C Range: 0 - 360DEG
 C Interval: 22.5DEG
 Test Speed: HIGH
 Temperature:25.3DEG
 Operators:
 Test Date:2021-10-19

Range: 0 - 90DEG
 Interval: 1.0DEG
 Test System:EVERFINE GO-SPEX500_V1 SYSTEM V2.00.421
 Humidity:65.0%
 Test Distance:3.080m [K=1.0000]
 Remarks:

UGR(Unified Glare Rating) Table

Test:U:120.06V I:0.0685A P:7.6861W PF:0.9532 Freq:59.98Hz Lamp Flux:643.352x1 lm		
NAME: ASD-CD-TR-2D8AC-WH	TYPE:	WEIGHT:
SPEC.:4000K 90	DIM.:	SERIAL No.:
MFR.: ASD Lighting Corp	SUR.:	Shielding Angle:

ceiling/cavity	0.7	0.7	0.5	0.5	0.3	0.7	0.7	0.5	0.5	0.3
walls	0.5	0.3	0.5	0.3	0.3	0.5	0.3	0.5	0.3	0.3
working plane	0.2	0.2	0.2	0.2	0.2	0.2	0.2	0.2	0.2	0.2
Room dimensions	Viewed crosswise					Viewed endwise				
x = 2H y = 2H	5.0	5.9	5.2	6.0	6.2	4.9	5.7	5.1	5.9	6.0
3H	5.5	6.3	5.8	6.5	6.7	5.2	6.0	5.4	6.2	6.4
4H	5.7	6.5	6.0	6.7	6.9	5.2	6.0	5.5	6.2	6.4
6H	5.8	6.5	6.1	6.8	7.0	5.2	5.9	5.5	6.1	6.3
8H	5.8	6.5	6.1	6.8	7.0	5.1	5.8	5.4	6.0	6.3
12H	5.8	6.4	6.1	6.7	7.0	5.1	5.7	5.4	6.0	6.3
4H 2H	5.1	5.9	5.4	6.1	6.3	5.0	5.8	5.3	6.0	6.2
3H	5.8	6.4	6.1	6.7	7.0	5.4	6.1	5.7	6.3	6.6
4H	6.1	6.7	6.4	7.0	7.3	5.5	6.1	5.8	6.4	6.7
6H	6.3	6.8	6.6	7.1	7.5	5.5	6.0	5.8	6.3	6.7
8H	6.3	6.7	6.7	7.1	7.5	5.4	5.9	5.8	6.2	6.6
12H	6.2	6.7	6.6	7.0	7.4	5.4	5.8	5.8	6.2	6.6
8H 4H	6.0	6.5	6.4	6.9	7.2	5.5	6.0	5.9	6.3	6.7
6H	6.3	6.7	6.7	7.1	7.5	5.5	5.9	5.9	6.3	6.7
8H	6.3	6.6	6.7	7.1	7.5	5.4	5.8	5.9	6.2	6.6
12H	6.3	6.6	6.7	7.0	7.5	5.4	5.7	5.8	6.1	6.6
12H 4H	6.0	6.4	6.4	6.8	7.2	5.5	5.9	5.9	6.3	6.7
6H	6.2	6.6	6.7	7.0	7.4	5.4	5.8	5.9	6.2	6.6
8H	6.2	6.5	6.7	7.0	7.5	5.4	5.7	5.8	6.1	6.6
Variations with the observer position at spacings:										
S = 1.0H	+ 0.7 / - 0.9					+ 0.9 / - 1.3				
1.5H	+ 1.0 / - 0.6					+ 1.4 / - 0.8				
2.0H	+ 1.1 / - 0.9					+ 1.3 / - 1.1				

CIE Pub.117, 643.4 lm Total Lamp Luminous Flux Correct (8log(F/F0) = -1.5)
 Area: 0.111111 m2

C Range: 0 - 360DEG
 C Interval: 22.5DEG
 Test Speed: HIGH
 Temperature:25.3DEG
 Operators:
 Test Date:2021-10-19

Range: 0 - 90DEG
 Interval: 1.0DEG
 Test System:EVERFINE GO-SPEX500_V1 SYSTEM V2.00.421
 Humidity:65.0%
 Test Distance:3.080m [K=1.0000]
 Remarks:

UTILIZATION FACTORS TABLE

Test:U:120.06V I:0.0685A P:7.6861W PF:0.9532 Freq:59.98Hz Lamp Flux:643.352x1 lm		
NAME: ASD-CD-TR-2D8AC-WH	TYPE:	WEIGHT:
SPEC.:4000K 90	DIM.:	SERIAL No.:
MFR.: ASD Lighting Corp	SUR.:	Shielding Angle:

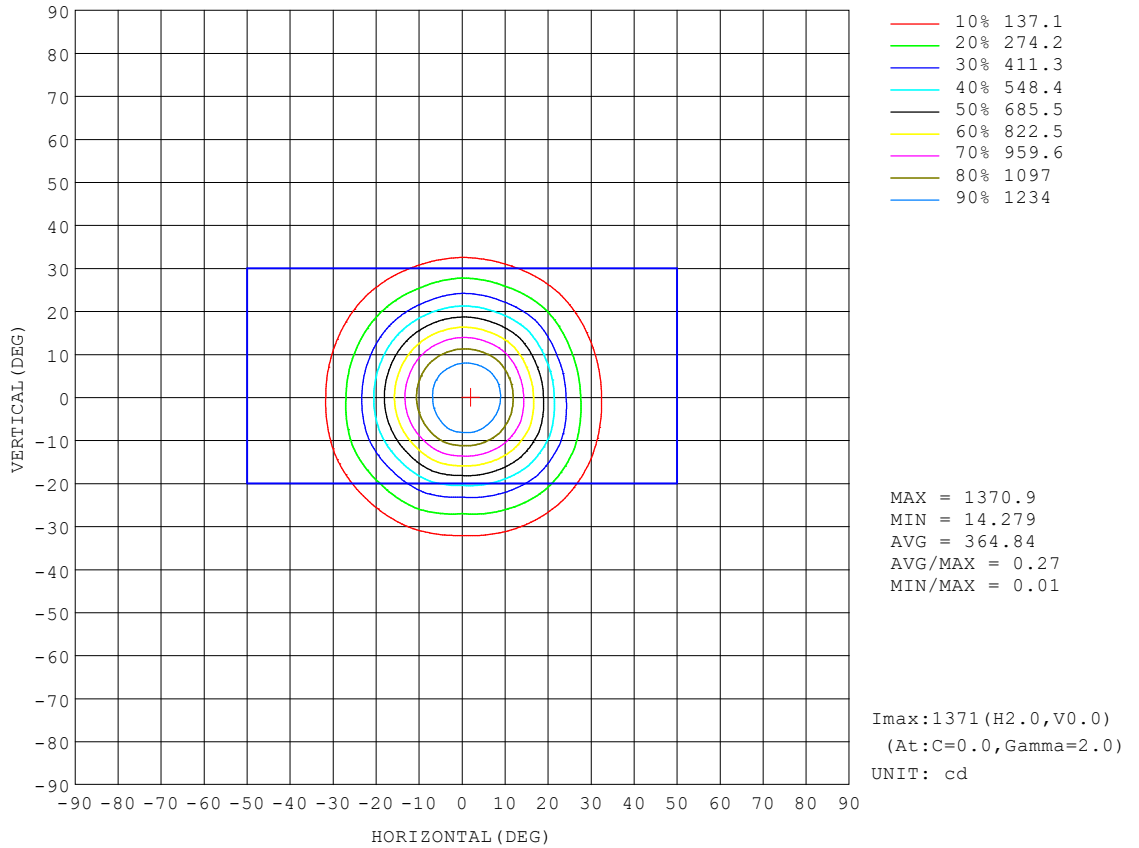
REFLECTANCE										
Ceiling	0.8	0.8	0.8	0.7	0.7	0.7	0.5	0.5	0.5	0
Walls	0.7	0.5	0.3	0.7	0.5	0.3	0.7	0.5	0.3	0
Working plane	0.2	0.2	0.2	0.2	0.2	0.2	0.2	0.2	0.2	0
ROOM INDEX	UTILIZATION FACTORS (PERCENT) $k(RI) \times RCR = 5$									
k = 0.60	87	80	76	86	80	76	85	80	76	73
0.80	94	88	84	93	88	84	92	87	84	80
1.00	99	93	89	98	92	89	96	92	88	84
1.25	103	97	94	102	97	93	100	96	93	88
1.50	105	101	97	104	100	97	102	98	96	91
2.00	108	104	101	107	103	100	104	101	98	93
2.50	110	106	103	108	105	102	105	102	100	94
3.00	112	108	105	110	107	104	106	104	102	96
4.00	114	111	109	112	109	107	108	106	104	97
5.00	115	113	111	113	111	109	109	107	106	98
ROOM INDEX	UF(total)									Direct
According to DIN EN 13032-2 2004			Suspended				SHRNOM = 1.25			

C Range: 0 - 360DEG
 C Interval: 22.5DEG
 Test Speed: HIGH
 Temperature:25.3DEG
 Operators:
 Test Date:2021-10-19

Range: 0 - 90DEG
 Interval: 1.0DEG
 Test System:EVERFINE GO-SPEX500_V1 SYSTEM V2.00.421
 Humidity:65.0%
 Test Distance:3.080m [K=1.0000]
 Remarks:

ISOCANDELA DIAGRAM

Test:U:120.06V I:0.0685A P:7.6861W PF:0.9532 Freq:59.98Hz Lamp Flux:643.352x1 lm		
NAME: ASD-CD-TR-2D8AC-WH	TYPE:	WEIGHT:
SPEC.:4000K 90	DIM.:	SERIAL No.:
MFR.: ASD Lighting Corp	SUR.:	Shielding Angle:

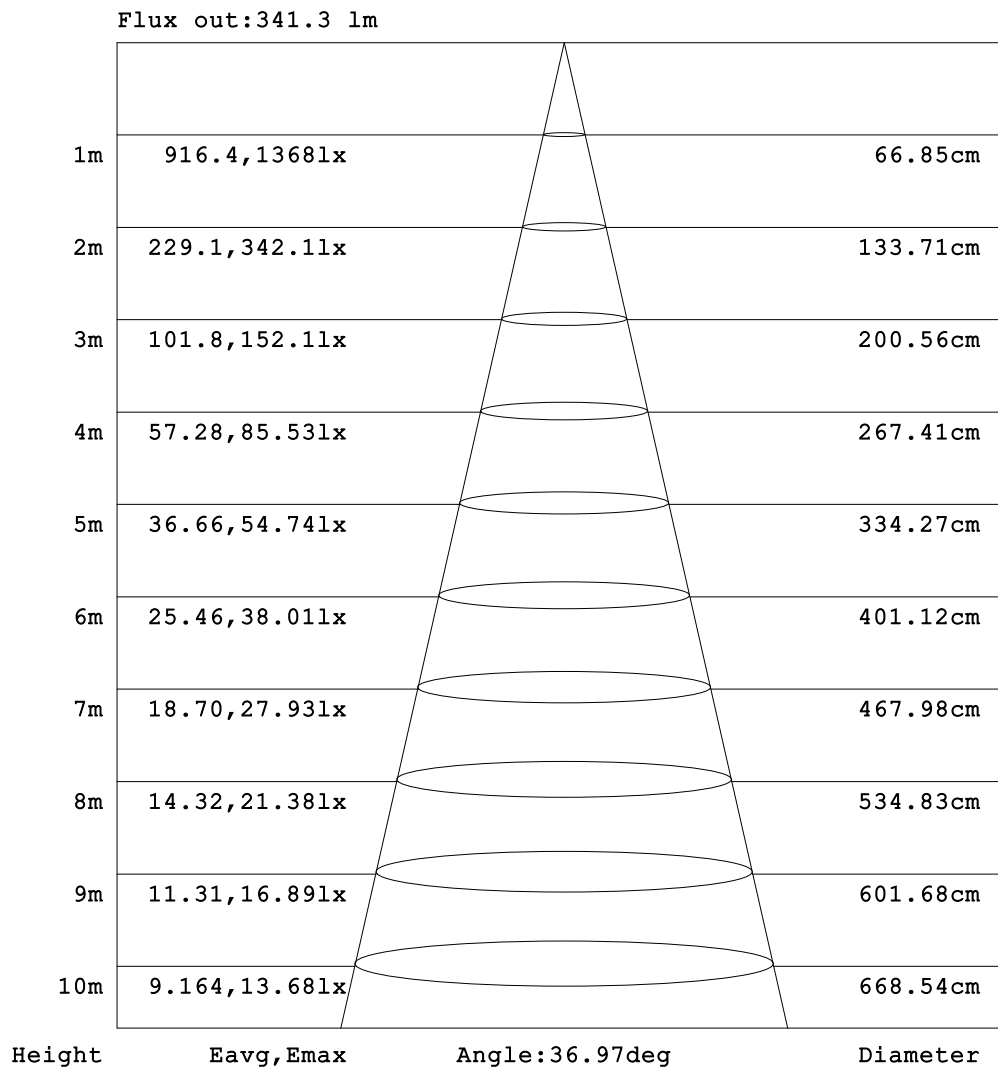


C Range: 0 - 360DEG
 C Interval: 22.5DEG
 Test Speed: HIGH
 Temperature:25.3DEG
 Operators:
 Test Date:2021-10-19

Range: 0 - 90DEG
 Interval: 1.0DEG
 Test System:EVERFINE GO-SPEX500_V1 SYSTEM V2.00.421
 Humidity:65.0%
 Test Distance:3.080m [K=1.0000]
 Remarks:

AAI Figure

Test:U:120.06V I:0.0685A P:7.6861W PF:0.9532 Freq:59.98Hz Lamp Flux:643.352x1 lm		
NAME: ASD-CD-TR-2D8AC-WH	TYPE:	WEIGHT:
SPEC.:4000K 90	DIM.:	SERIAL No.:
MFR.: ASD Lighting Corp	SUR.:	Shielding Angle:



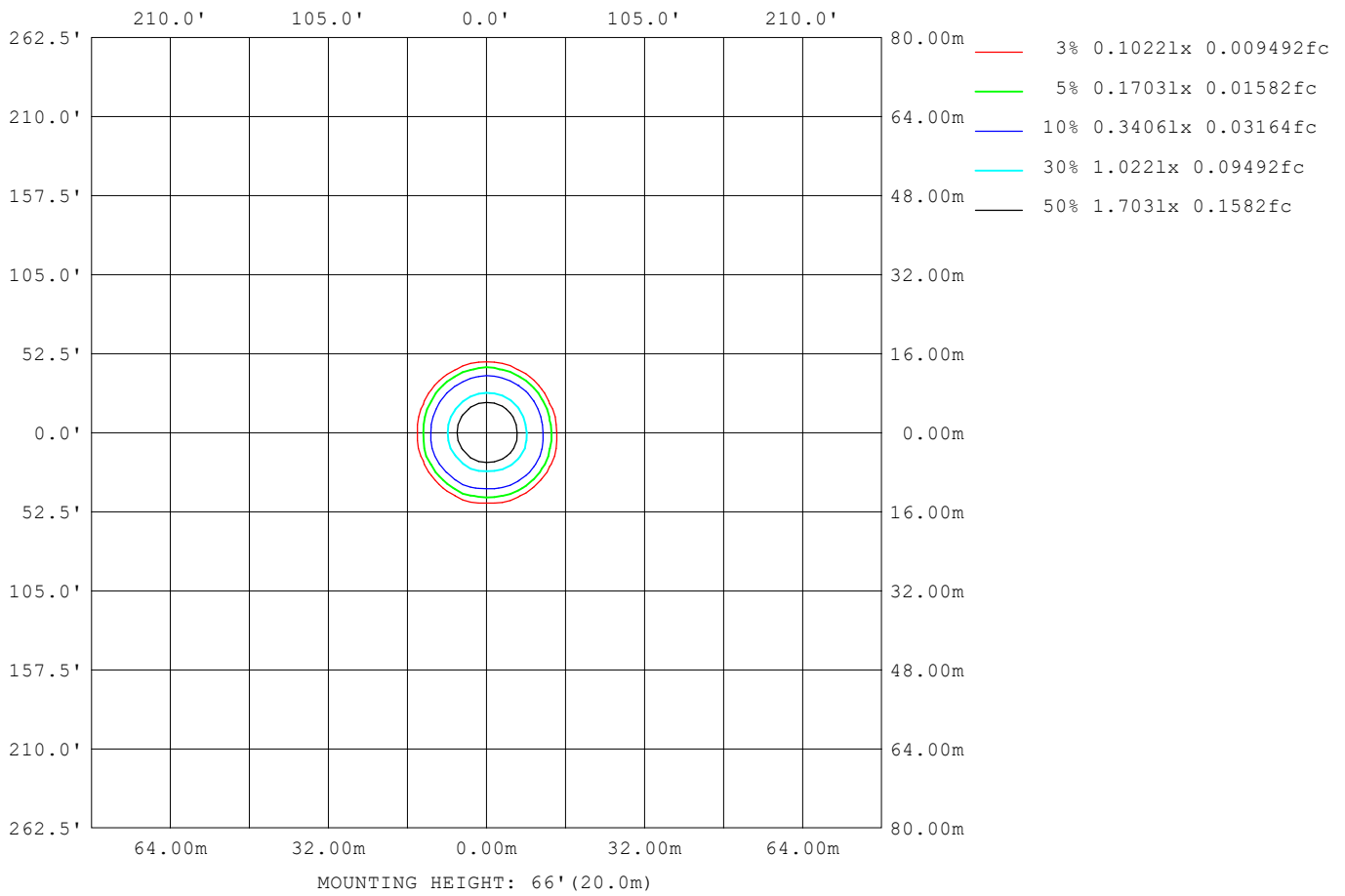
Note:The Curves indicate the illuminated area and the average illumination when the luminaire is at different distance.

C Range: 0 - 360DEG
 C Interval: 22.5DEG
 Test Speed: HIGH
 Temperature:25.3DEG
 Operators:
 Test Date:2021-10-19

Range: 0 - 90DEG
 Interval: 1.0DEG
 Test System:EVERFINE GO-SPEX500_V1 SYSTEM V2.00.421
 Humidity:65.0%
 Test Distance:3.080m [K=1.0000]
 Remarks:

ISOLUX DIAGRAM

Test:U:120.06V I:0.0685A P:7.6861W PF:0.9532 Freq:59.98Hz Lamp Flux:643.352x1 lm		
NAME: ASD-CD-TR-2D8AC-WH	TYPE:	WEIGHT:
SPEC.:4000K 90	DIM.:	SERIAL No.:
MFR.: ASD Lighting Corp	SUR.:	Shielding Angle:



C Range: 0 - 360DEG
 C Interval: 22.5DEG
 Test Speed: HIGH
 Temperature:25.3DEG
 Operators:
 Test Date:2021-10-19

Range: 0 - 90DEG
 Interval: 1.0DEG
 Test System:EVERFINE GO-SPEX500_V1 SYSTEM V2.00.421
 Humidity:65.0%
 Test Distance:3.080m [K=1.0000]
 Remarks:

LED Avg.L Report

Test:U:120.06V I:0.0685A P:7.6861W PF:0.9532 Freq:59.98Hz Lamp Flux:643.352x1 lm		
NAME: ASD-CD-TR-2D8AC-WH	TYPE:	WEIGHT:
SPEC.:4000K 90	DIM.:	SERIAL No.:
MFR.: ASD Lighting Corp	SUR.:	Shielding Angle:

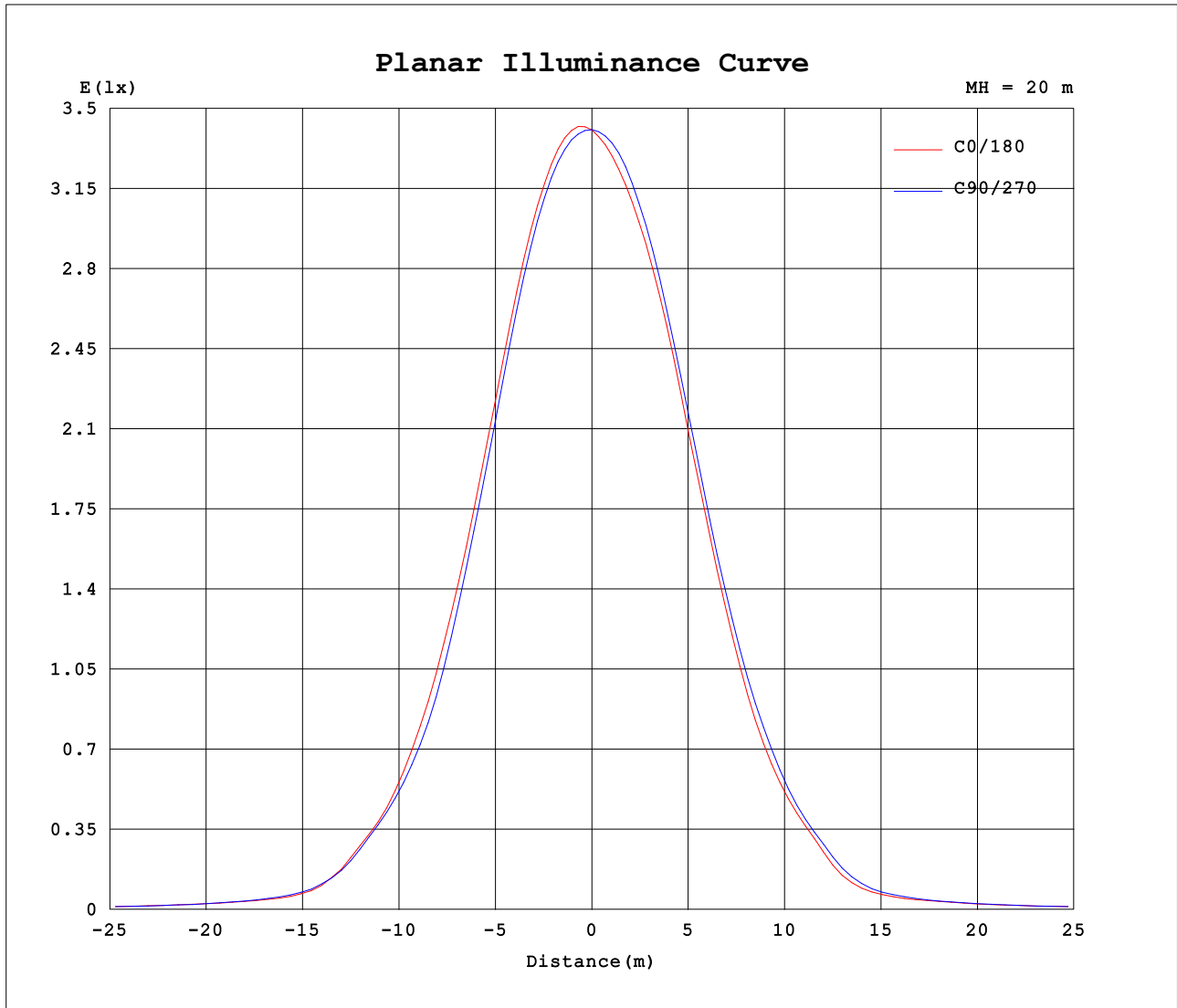
AvgL	cd/m2
L_0~180 (65) av	185
L_0~180 (75) av	139
L_0~180 (85) av	40
L_90~270 (65) av	161
L_90~270 (75) av	78
L_90~270 (85) av	5
L_45 (65) av	178
L_45 (75) av	104
L_45 (85) av	5

Standard: GB/T 29293-2012

C Range: 0 - 360DEG
 C Interval: 22.5DEG
 Test Speed: HIGH
 Temperature:25.3DEG
 Operators:
 Test Date:2021-10-19

Range: 0 - 90DEG
 Interval: 1.0DEG
 Test System:EVERFINE GO-SPEX500_V1 SYSTEM V2.00.421
 Humidity:65.0%
 Test Distance:3.080m [K=1.0000]
 Remarks:

Planar Illuminance Curve



C Range: 0 - 360DEG
 C Interval: 22.5DEG
 Test Speed: HIGH
 Temperature: 25.3DEG
 Operators:
 Test Date: 2021-10-19

Range: 0 - 90DEG
 Interval: 1.0DEG
 Test System: EVERFINE GO-SPEX500_V1 SYSTEM V2.00.421
 Humidity: 65.0%
 Test Distance: 3.080m [K=1.0000]
 Remarks:

LUMINOUS DISTRIBUTION INTENSITY DATA

Test:U:120.06V I:0.0685A P:7.6861W PF:0.9532 Freq:59.98Hz Lamp Flux:643.352x1 lm		
NAME: ASD-CD-TR-2D8AC-WH	TYPE:	WEIGHT:
SPEC.:4000K 90	DIM.:	SERIAL No.:
MFR.: ASD Lighting Corp	SUR.:	Shielding Angle:

Table--1

UNIT: cd

C (DEG) □ (DEG)	0	22.5	45	67.5	90	112.5	135	157.5	180	202.5	225	247.5	270	292.5	315	337.5			
0	1363	1363	1363	1363	1363	1363	1363	1363	1363	1363	1363	1363	1363	1363	1363	1363			
5	1345	1343	1336	1332	1322	1313	1299	1287	1282	1286	1294	1302	1313	1324	1339	1343			
10	1190	1190	1185	1175	1158	1155	1133	1123	1123	1128	1138	1142	1155	1168	1186	1193			
15	919	944	934	902	878	882	864	863	864	865	877	884	898	905	925	914			
20	625	661	652	609	574	594	576	581	577	577	591	597	612	615	638	618			
25	375	413	411	372	340	363	353	361	341	338	347	350	376	372	389	368			
30	203	228	232	214	196	209	200	206	191	189	195	195	209	205	213	201			
35	77.4	90.5	95.3	88.8	82.5	83.8	76.4	73.9	68.2	73.2	77.3	78.1	83.3	81.8	80.8	74.5			
40	40.1	44.4	45.8	45.9	43.5	43.4	41.3	40.5	39.3	41.2	42.3	42.6	43.6	42.2	42.2	39.5			
45	29.5	30.2	30.5	30.9	29.4	29.0	28.5	28.5	28.2	28.3	28.9	29.4	29.8	29.4	29.7	29.4			
50	22.8	22.8	22.6	22.5	22.3	22.2	22.0	22.0	21.9	21.7	21.9	22.0	22.2	22.4	22.8	22.8			
55	16.6	16.6	16.4	16.4	16.1	16.0	15.7	15.7	15.5	15.4	15.7	15.5	15.8	15.9	16.6	16.5			
60	12.0	12.1	12.0	11.8	11.6	11.5	11.5	11.4	11.3	11.3	11.3	10.9	10.9	11.1	11.8	11.9			
65	9.08	9.04	8.76	8.19	7.79	7.91	8.23	8.37	8.32	8.35	8.03	7.50	7.36	7.70	8.48	9.04			
70	6.48	6.41	5.74	5.05	4.68	4.83	5.29	5.78	5.77	5.74	5.18	4.62	4.47	4.75	5.53	6.34			
75	4.30	4.05	3.22	2.58	2.29	2.42	2.89	3.54	3.71	3.48	2.85	2.34	2.19	2.39	3.05	3.93			
80	2.50	2.01	1.18	0.70	0.52	0.61	0.99	1.66	2.05	1.62	1.00	0.59	0.49	0.59	1.06	1.88			
85	0.44	0.43	0.05	0.05	0.05	0.05	0.05	0.30	0.33	0.29	0.04	0.04	0.04	0.04	0.04	0.39			
90	0.01	0.01	0.01	0.01	0.01	0.01	0.01	0.01	0.02	0.02	0.01	0.01	0.01	0.01	0.02	0.02			

C Range: 0 - 360DEG
 C Interval: 22.5DEG
 Test Speed: HIGH
 Temperature:25.3DEG
 Operators:
 Test Date:2021-10-19

□ Range: 0 - 90DEG
 □ Interval: 1.0DEG
 Test System:EVERFINE GO-SPEX500_V1 SYSTEM V2.00.421
 Humidity:65.0%
 Test Distance:3.080m [K=1.0000]
 Remarks: