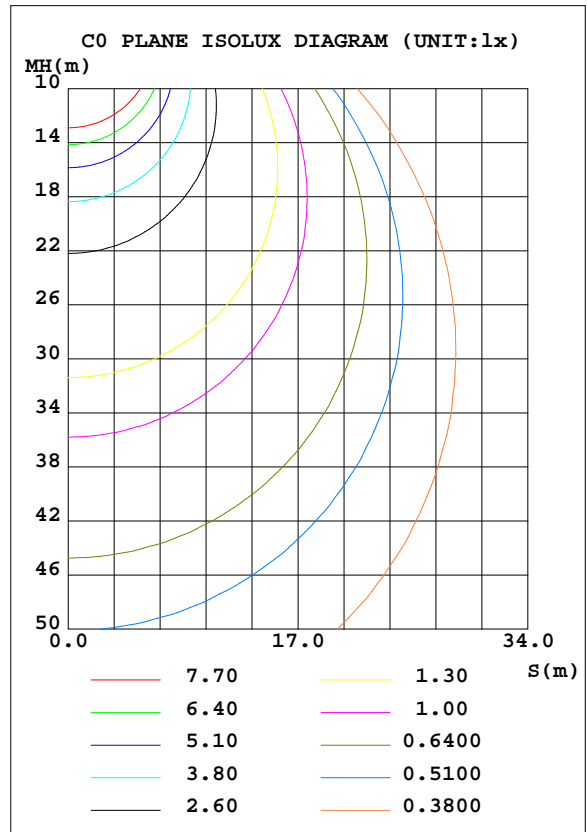
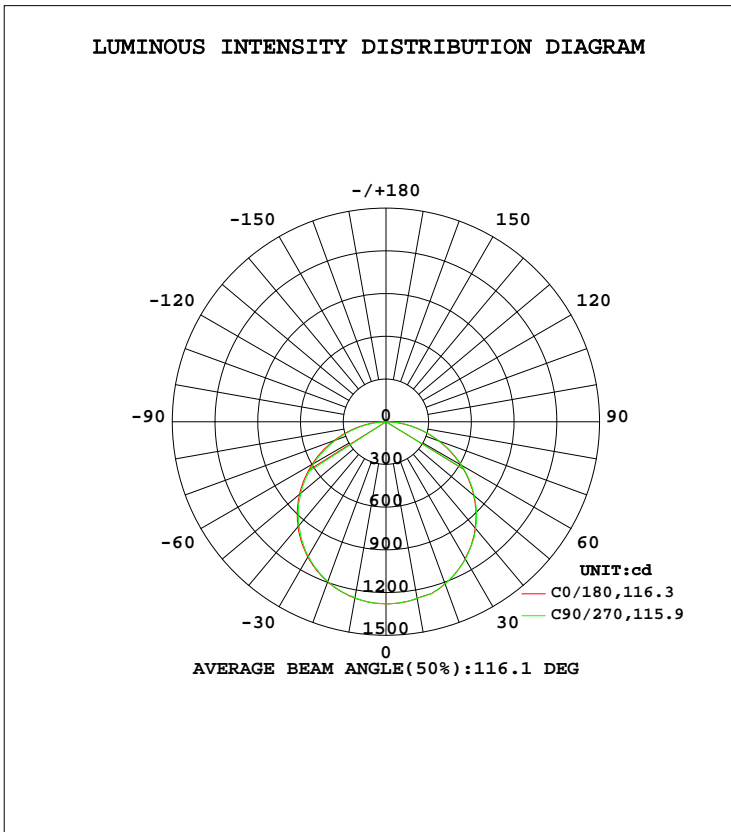


LUMINAIRE PHOTOMETRIC TEST REPORT

Test:U:120.03V I:0.3813A P:43.590W PF:0.9524 Freq:60.00Hz Lamp Flux:3843.98x1 lm		
NAME:ASD-MPR-32D45WH 5000K	TYPE: N/A	WEIGHT: N/A
SPEC.:LED Luminaires	DIM.: N/A	SERIAL No.: N/A
MFR.:ASD Lighting Corp	SUR.: N/A	Shielding Angle: N/A

DATA OF LAMP		PHOTOMETRIC DATA			
MODEL	ASD-MPR-32D45WH 5000K	Imax(cd)	1281	S/MH(C0/180)	1.29
NOMINAL POWER(W)	45W	LOR(%)	100.0	S/MH(C90/270)	1.29
RATED VOLTAGE(V)	120	TOTAL FLUX(lm)	3844.0	η UP, DN(C0-180)	0.0,49.4
NOMINAL FLUX(lm)	3843.98	CIE CLASS	DIRECT	η UP, DN(C180-360)	0.0,50.6
LAMPS INSIDE	1	η up(%)	0.0	CIBSE SHR NOM	1.25
TEST VOLTAGE(V)	120	η down(%)	100.0	CIBSE SHR MAX	1.35



C Range: 0 - 360DEG
 C Interval: 22.5DEG
 Test Speed: HIGH
 Temperature:25.0DEG
 Operators:Water
 Test Date:2024-08-27

γ Range: 0 - 180DEG
 γ Interval: 1.0DEG
 Test System:EVERFINE GO-R5000_V2 SYSTEM V2.00.446
 Humidity:44%
 Test Distance:2.519m [K=1.0000]
 Remarks:

ZONAL FLUX DIAGRAM

ZONAL FLUX DIAGRAM:

γ	C0	C45	C90	C135	C180	C225	C270	C315	γ	Φ zone	Φ total	%lum, lamp
10	1258	1258	1257	1257	1260	1264	1259	1262	0- 10	121.1	121.1	3.15,3.15
20	1197	1195	1194	1197	1211	1215	1212	1215	10- 20	349.6	470.8	12.2,12.2
30	1099	1096	1091	1096	1112	1115	1115	1115	20- 30	534.2	1005	26.1,26.1
40	963.0	956.8	950.8	956.5	974.5	978.7	979.9	980.6	30- 40	650.6	1656	43.1,43.1
50	793.7	785.0	780.6	786.5	804.0	808.2	810.8	812.1	40- 50	683.4	2339	60.8,60.8
60	598.7	589.9	585.9	594.5	607.2	610.6	614.2	616.8	50- 60	627.1	2966	77.2,77.2
70	388.6	375.8	372.7	379.4	393.9	394.6	399.7	405.1	60- 70	491.5	3458	89.9,89.9
80	177.3	165.5	161.2	167.2	180.8	181.4	185.7	192.3	70- 80	296.8	3754	97.7,97.7
90	0	0	0	0	0	0	0	0	80- 90	89.68	3844	100,100
100	0	0	0	0	0	0	0	0	90-100	0	3844	100,100
110	0	0	0	0	0	0	0	0	100-110	0	3844	100,100
120	0	0	0	0	0	0	0	0	110-120	0	3844	100,100
130	0	0	0	0	0	0	0	0	120-130	0	3844	100,100
140	0	0	0	0	0	0	0	0	130-140	0	3844	100,100
150	0	0	0	0	0	0	0	0	140-150	0	3844	100,100
160	0	0	0	0	0	0	0	0	150-160	0	3844	100,100
170	0	0	0	0	0	0	0	0	160-170	0	3844	100,100
180	0	0	0	0	0	0	0	0	170-180	0	3844	100,100
DEG	LUMINOUS INTENSITY:cd									UNIT:lm		

Conical surface Flux(90deg): 1998.8 lm

%lum = 52.0%
 %lamp = 52.0%

Conical surface Flux(120deg): 2966 lm

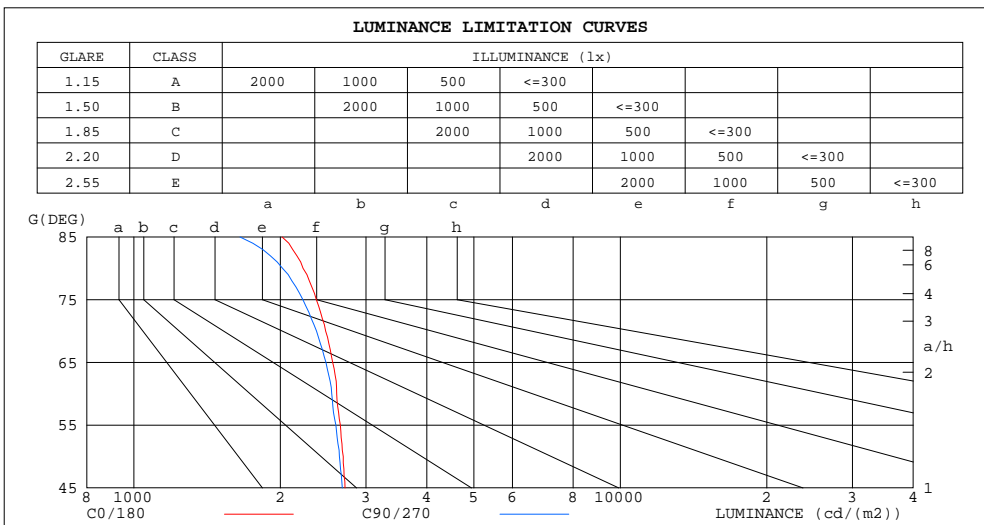
%lum = 77.2%
 %lamp = 77.2%

C Range: 0 - 360DEG
 C Interval: 22.5DEG
 Test Speed: HIGH
 Temperature:25.0DEG
 Operators:Water
 Test Date:2024-08-27

γ Range: 0 - 180DEG
 γ Interval: 1.0DEG
 Test System:EVERFINE GO-R5000_V2 SYSTEM V2.00.446
 Humidity:44%
 Test Distance:2.519m [K=1.0000]
 Remarks:

LUMINANCE LIMITATION CURVES

Test:U:120.03V I:0.3813A P:43.590W PF:0.9524 Freq:60.00Hz Lamp Flux:3843.98x1 lm		
NAME:ASD-MPR-32D45WH 5000K	TYPE: N/A	WEIGHT: N/A
SPEC.:LED Luminaires	DIM.: N/A	SERIAL No.: N/A
MFR.:ASD Lighting Corp	SUR.: N/A	Shielding Angle: N/A



LUMINANCE cd/(m2)		
G (DEG)	C0/180	C90/270
85	2017	1653
80	2228	2021
75	2372	2226
70	2478	2373
65	2563	2482
60	2612	2552
55	2657	2601
50	2693	2645
45	2716	2682

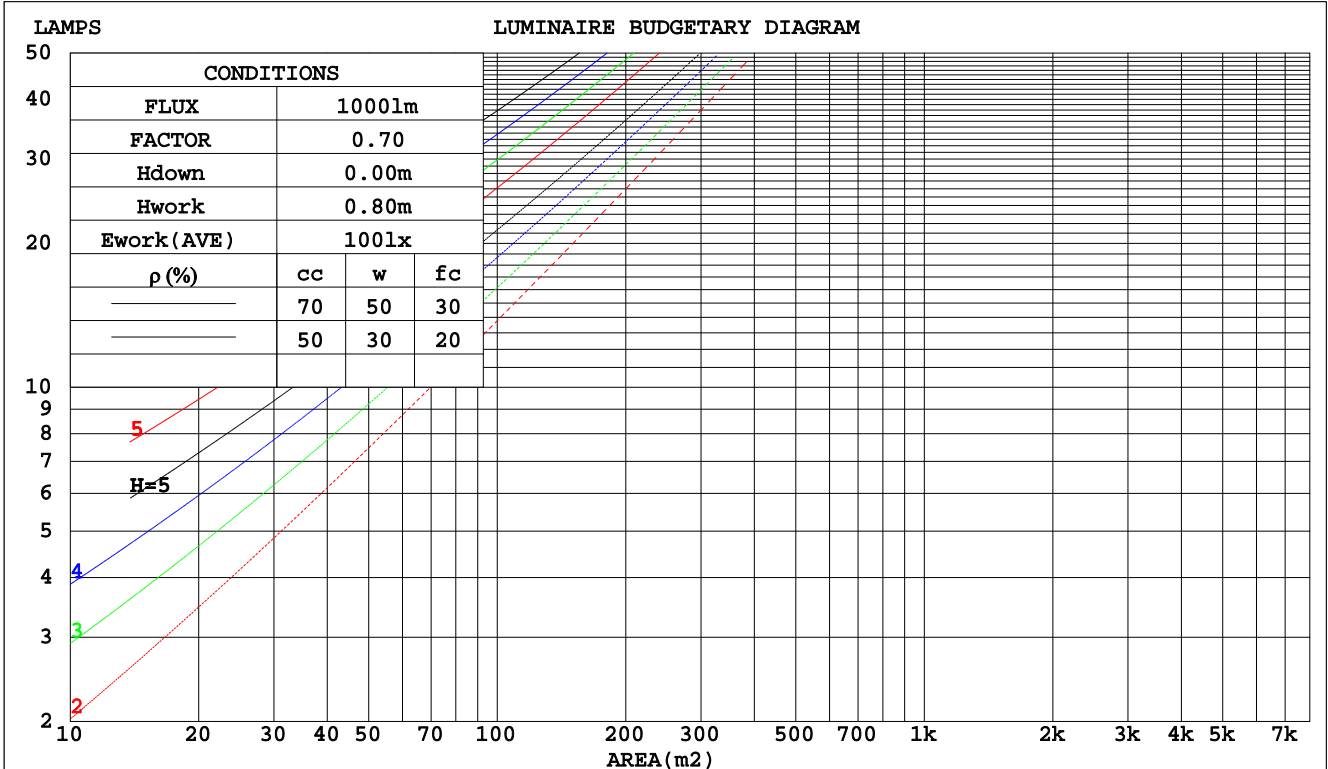
C Range: 0 - 360DEG
 C Interval: 22.5DEG
 Test Speed: HIGH
 Temperature: 25.0DEG
 Operators: Water
 Test Date: 2024-08-27

γ Range: 0 - 180DEG
 γ Interval: 1.0DEG
 Test System: EVERFINE GO-R5000_V2 SYSTEM V2.00.446
 Humidity: 44%
 Test Distance: 2.519m [K=1.0000]
 Remarks:

CU AND LUMINAIRE BUDGETARY ESTIMATE DIAGRAM

Test:U:120.03V I:0.3813A P:43.590W PF:0.9524 Freq:60.00Hz Lamp Flux:3843.98x1 lm		
NAME:ASD-MPR-32D45WH 5000K	TYPE: N/A	WEIGHT: N/A
SPEC.:LED Luminaires	DIM.: N/A	SERIAL No.: N/A
MFR.: ASD Lighting Corp	SUR.: N/A	Shielding Angle: N/A

pcc	80%			70%			50%			30%			10%			0
	50%	30%	10%	50%	30%	10%	50%	30%	10%	50%	30%	10%	50%	30%	10%	0
pw																
pfc	20%			20%			20%			20%			20%			0
RCR	RCR:Room Cavity Ratio															
	Coefficients of Utilization(CU)															
0.0	1.19	1.19	1.19	1.16	1.16	1.16	1.11	1.11	1.11	1.06	1.06	1.06	1.02	1.02	1.02	1.00
1.0	1.03	.99	.95	1.01	.97	.93	.97	.93	.90	.93	.90	.88	.89	.87	.85	.83
2.0	.90	.83	.77	.88	.81	.76	.84	.79	.74	.81	.76	.72	.78	.74	.71	.68
3.0	.79	.70	.63	.77	.69	.63	.74	.67	.62	.71	.65	.61	.69	.64	.60	.57
4.0	.69	.60	.53	.68	.60	.53	.65	.58	.52	.63	.57	.52	.61	.55	.51	.49
5.0	.62	.53	.46	.61	.52	.46	.59	.51	.45	.57	.50	.45	.55	.49	.44	.42
6.0	.56	.46	.40	.55	.46	.40	.53	.45	.39	.51	.44	.39	.50	.43	.39	.37
7.0	.50	.41	.35	.50	.41	.35	.48	.40	.35	.47	.40	.35	.45	.39	.34	.32
8.0	.46	.37	.31	.45	.37	.31	.44	.36	.31	.43	.36	.31	.41	.35	.31	.29
9.0	.42	.34	.28	.41	.34	.28	.40	.33	.28	.39	.33	.28	.38	.32	.28	.26
10.0	.39	.31	.25	.38	.31	.25	.37	.30	.25	.36	.30	.25	.35	.29	.25	.23



C Range: 0 - 360DEG
 C Interval: 22.5DEG
 Test Speed: HIGH
 Temperature:25.0DEG
 Operators:Water
 Test Date:2024-08-27

γ Range: 0 - 180DEG
 γ Interval: 1.0DEG
 Test System:EVERFINE GO-R5000_V2 SYSTEM V2.00.446
 Humidity:44%
 Test Distance:2.519m [K=1.0000]
 Remarks:

WEC AND CCEC

Test:U:120.03V I:0.3813A P:43.590W PF:0.9524 Freq:60.00Hz		
Lamp Flux:3843.98x1 lm		
NAME: ASD-MPR-32D45WH 5000K	TYPE: N/A	WEIGHT: N/A
SPEC.:LED Luminaires	DIM.: N/A	SERIAL No.: N/A
MFR.: ASD Lighting Corp	SUR.: N/A	Shielding Angle: N/A

ρcc	80%			70%			50%			30%			10%			0
ρw	50%	30%	10%	50%	30%	10%	50%	30%	10%	50%	30%	10%	50%	30%	10%	0
ρfc	20%			20%			20%			20%			20%			0
RCR	RCR:Room Cavity Ratio						Wall Exitance Coefficients(WEC)									
0.0																
1.0	.320	.182	.058	.313	.178	.057	.299	.172	.055	.287	.166	.053	.276	.160	.052	
2.0	.299	.164	.050	.293	.161	.050	.281	.156	.049	.270	.151	.047	.260	.147	.046	
3.0	.275	.147	.044	.270	.145	.044	.260	.141	.043	.250	.137	.042	.241	.133	.041	
4.0	.253	.132	.039	.249	.130	.038	.239	.127	.038	.231	.124	.037	.223	.121	.037	
5.0	.234	.119	.035	.229	.118	.034	.221	.115	.034	.214	.113	.034	.206	.110	.033	
6.0	.216	.108	.031	.213	.107	.031	.205	.105	.031	.198	.103	.030	.192	.101	.030	
7.0	.201	.099	.028	.198	.098	.028	.191	.097	.028	.185	.095	.028	.179	.093	.027	
8.0	.188	.092	.026	.185	.091	.026	.179	.089	.025	.173	.088	.025	.168	.086	.025	
9.0	.176	.085	.024	.173	.084	.024	.168	.083	.024	.163	.082	.023	.158	.080	.023	
10.0	.165	.079	.022	.163	.079	.022	.158	.077	.022	.153	.076	.022	.149	.075	.022	

ρcc	80%			70%			50%			30%			10%			0
ρw	50%	30%	10%	50%	30%	10%	50%	30%	10%	50%	30%	10%	50%	30%	10%	0
ρfc	20%			20%			20%			20%			20%			0
RCR	RCR:Room Cavity Ratio						Ceiling Cavity Exitance Coefficients(CCEC)									
0.0	.190	.190	.190	.163	.163	.163	.111	.111	.111	.064	.064	.064	.020	.020	.020	
1.0	.181	.156	.134	.155	.134	.115	.106	.092	.080	.061	.053	.046	.020	.017	.015	
2.0	.173	.132	.097	.148	.114	.084	.102	.079	.059	.059	.046	.034	.019	.015	.011	
3.0	.166	.114	.074	.142	.099	.064	.097	.069	.045	.056	.040	.026	.018	.013	.009	
4.0	.158	.101	.058	.135	.087	.050	.093	.061	.035	.054	.036	.021	.017	.012	.007	
5.0	.150	.091	.047	.129	.078	.041	.089	.055	.029	.052	.032	.017	.017	.011	.006	
6.0	.143	.082	.039	.123	.071	.034	.085	.050	.024	.049	.029	.014	.016	.010	.005	
7.0	.136	.075	.033	.117	.065	.029	.081	.046	.020	.047	.027	.012	.015	.009	.004	
8.0	.130	.070	.028	.112	.060	.025	.077	.042	.018	.045	.025	.010	.015	.008	.003	
9.0	.124	.065	.025	.106	.056	.022	.074	.040	.015	.043	.023	.009	.014	.008	.003	
10.0	.118	.060	.022	.102	.052	.019	.070	.037	.014	.041	.022	.008	.013	.007	.003	

C Range: 0 - 360DEG
 C Interval: 22.5DEG
 Test Speed: HIGH
 Temperature:25.0DEG
 Operators:Water
 Test Date:2024-08-27

γ Range: 0 - 180DEG
 γ Interval: 1.0DEG
 Test System:EVERFINE GO-R5000_V2 SYSTEM V2.00.446
 Humidity:44%
 Test Distance:2.519m [K=1.0000]
 Remarks:

UGR(Unified Glare Rating) Table

Test:U:120.03V I:0.3813A P:43.590W PF:0.9524 Freq:60.00Hz Lamp Flux:3843.98x1 lm		
NAME:ASD-MPR-32D45WH 5000K	TYPE: N/A	WEIGHT: N/A
SPEC.:LED Luminaires	DIM.: N/A	SERIAL No.: N/A
MFR.:ASD Lighting Corp	SUR.: N/A	Shielding Angle: N/A

ceiling/cavity	0.7	0.7	0.5	0.5	0.3	0.7	0.7	0.5	0.5	0.3
walls	0.5	0.3	0.5	0.3	0.3	0.5	0.3	0.5	0.3	0.3
working plane	0.2	0.2	0.2	0.2	0.2	0.2	0.2	0.2	0.2	0.2
Room dimensions	Viewed crosswise					Viewed endwise				
x = 2H y = 2H	11.6	13.2	11.9	13.4	13.6	11.5	13.1	11.8	13.3	13.5
3H	13.2	14.7	13.5	14.9	15.1	13.1	14.5	13.4	14.7	15.0
4H	13.9	15.3	14.2	15.5	15.8	13.7	15.1	14.0	15.3	15.6
6H	14.4	15.7	14.8	16.0	16.3	14.2	15.5	14.5	15.7	16.0
8H	14.6	15.8	15.0	16.1	16.4	14.3	15.6	14.7	15.9	16.1
12H	14.7	15.9	15.1	16.2	16.5	14.4	15.6	14.8	15.9	16.2
4H 2H	12.2	13.6	12.5	13.8	14.1	12.1	13.5	12.5	13.8	14.0
3H	14.0	15.2	14.4	15.5	15.8	13.9	15.1	14.3	15.4	15.7
4H	14.8	15.9	15.2	16.3	16.6	14.7	15.8	15.0	16.1	16.4
6H	15.5	16.5	15.9	16.8	17.2	15.3	16.2	15.7	16.6	17.0
8H	15.7	16.6	16.1	17.0	17.4	15.5	16.4	15.9	16.7	17.1
12H	15.9	16.7	16.3	17.1	17.5	15.6	16.4	16.0	16.8	17.2
8H 4H	15.1	16.0	15.5	16.4	16.8	15.0	15.9	15.4	16.2	16.6
6H	15.9	16.7	16.4	17.1	17.5	15.7	16.5	16.2	16.9	17.3
8H	16.3	16.9	16.7	17.4	17.8	16.0	16.7	16.5	17.1	17.6
12H	16.5	17.1	17.0	17.5	18.0	16.2	16.8	16.7	17.2	17.7
12H 4H	15.1	16.0	15.6	16.4	16.8	15.0	15.8	15.4	16.2	16.6
6H	16.0	16.7	16.5	17.1	17.5	15.8	16.5	16.2	16.9	17.3
8H	16.4	16.9	16.8	17.4	17.9	16.1	16.7	16.6	17.1	17.6
Variations with the observer position at spacings(CIE Pub.117):										
S = 1.0H	+ 0.1 / - 0.2					+ 0.1 / - 0.2				
1.5H	+ 0.2 / - 0.3					+ 0.2 / - 0.3				
2.0H	+ 0.1 / - 0.3					+ 0.2 / - 0.3				

CIE Pub.117, 3844 lm Total Lamp Luminous Flux Correct (8log(F/F0) = 4.7)
Area: 0.459402 m2

C Range: 0 - 360DEG
C Interval: 22.5DEG
Test Speed: HIGH
Temperature:25.0DEG
Operators:Water
Test Date:2024-08-27

γ Range: 0 - 180DEG
γ Interval: 1.0DEG
Test System:EVERFINE GO-R5000_V2 SYSTEM V2.00.446
Humidity:44%
Test Distance:2.519m [K=1.0000]
Remarks:

UTILIZATION FACTORS TABLE

Test:U:120.03V I:0.3813A P:43.590W PF:0.9524 Freq:60.00Hz Lamp Flux:3843.98x1 lm		
NAME:ASD-MPR-32D45WH 5000K	TYPE: N/A	WEIGHT: N/A
SPEC.:LED Luminaires	DIM.: N/A	SERIAL No.: N/A
MFR.:ASD Lighting Corp	SUR.: N/A	Shielding Angle: N/A

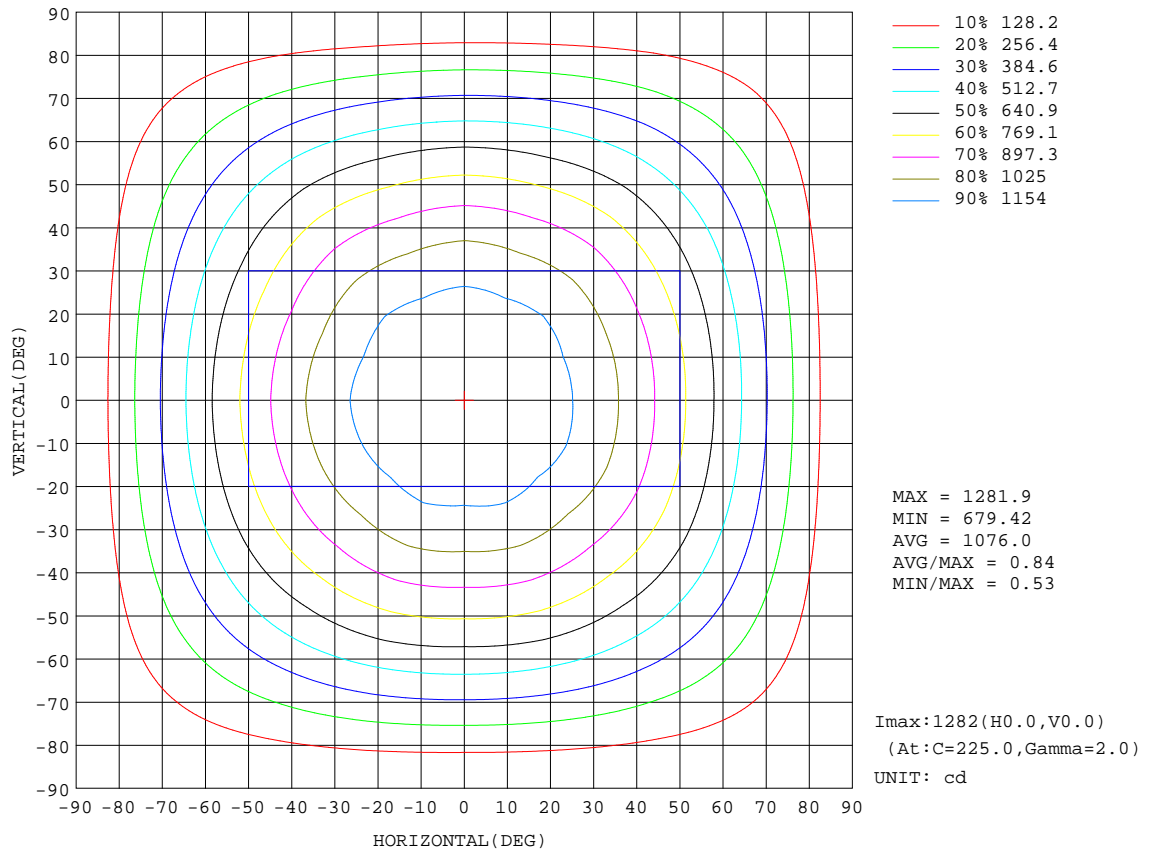
REFLECTANCE										
Ceiling	0.8	0.8	0.8	0.7	0.7	0.7	0.5	0.5	0.5	0
Walls	0.7	0.5	0.3	0.7	0.5	0.3	0.7	0.5	0.3	0
Working plane	0.2	0.2	0.2	0.2	0.2	0.2	0.2	0.2	0.2	0
ROOM INDEX	UTILIZATION FACTORS(PERCENT) $k(RI) \times RCR = 5$									
k = 0.60	57	45	38	56	45	38	55	44	38	31
0.80	67	55	47	66	54	47	64	54	47	40
1.00	75	64	56	74	63	56	72	65	55	48
1.25	82	71	64	81	71	64	78	69	63	55
1.50	87	77	70	86	76	69	82	74	68	61
2.00	94	85	79	92	84	78	89	82	77	69
2.50	98	90	84	96	89	83	92	86	81	73
3.00	102	95	89	99	93	88	95	90	86	77
4.00	106	100	95	103	98	94	99	95	91	82
5.00	108	103	99	106	101	97	101	98	94	85
ROOM INDEX	UF(total)									Direct
According to DIN EN 13032-2 2004			Suspended				SHRNOM = 1.25			

C Range: 0 - 360DEG
 C Interval: 22.5DEG
 Test Speed: HIGH
 Temperature:25.0DEG
 Operators:Water
 Test Date:2024-08-27

γ Range: 0 - 180DEG
 γ Interval: 1.0DEG
 Test System:EVERFINE GO-R5000_V2 SYSTEM V2.00.446
 Humidity:44%
 Test Distance:2.519m [K=1.0000]
 Remarks:

ISOCANDELA DIAGRAM

Test:U:120.03V I:0.3813A P:43.590W PF:0.9524 Freq:60.00Hz Lamp Flux:3843.98x1 lm		
NAME:ASD-MPR-32D45WH 5000K	TYPE: N/A	WEIGHT: N/A
SPEC.:LED Luminaires	DIM.: N/A	SERIAL No.: N/A
MFR.: ASD Lighting Corp	SUR.: N/A	Shielding Angle: N/A



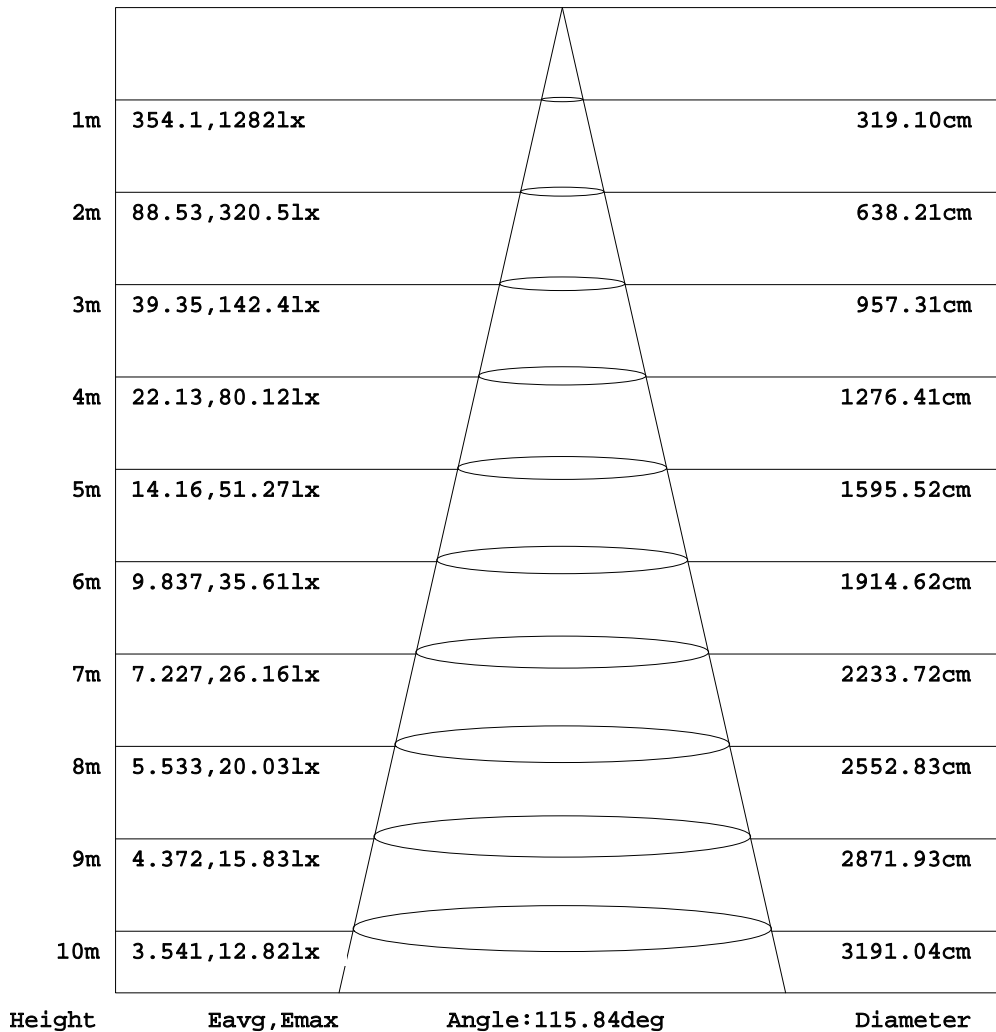
C Range: 0 - 360DEG
 C Interval: 22.5DEG
 Test Speed: HIGH
 Temperature:25.0DEG
 Operators:Water
 Test Date:2024-08-27

γ Range: 0 - 180DEG
 γ Interval: 1.0DEG
 Test System:EVERFINE GO-R5000_V2 SYSTEM V2.00.446
 Humidity:44%
 Test Distance:2.519m [K=1.0000]
 Remarks:

AAI Figure

Test:U:120.03V I:0.3813A P:43.590W PF:0.9524 Freq:60.00Hz Lamp Flux:3843.98x1 lm		
NAME:ASD-MPR-32D45WH 5000K	TYPE: N/A	WEIGHT: N/A
SPEC.:LED Luminaires	DIM.: N/A	SERIAL No.: N/A
MFR.: ASD Lighting Corp	SUR.: N/A	Shielding Angle: N/A

Flux out:2849 lm



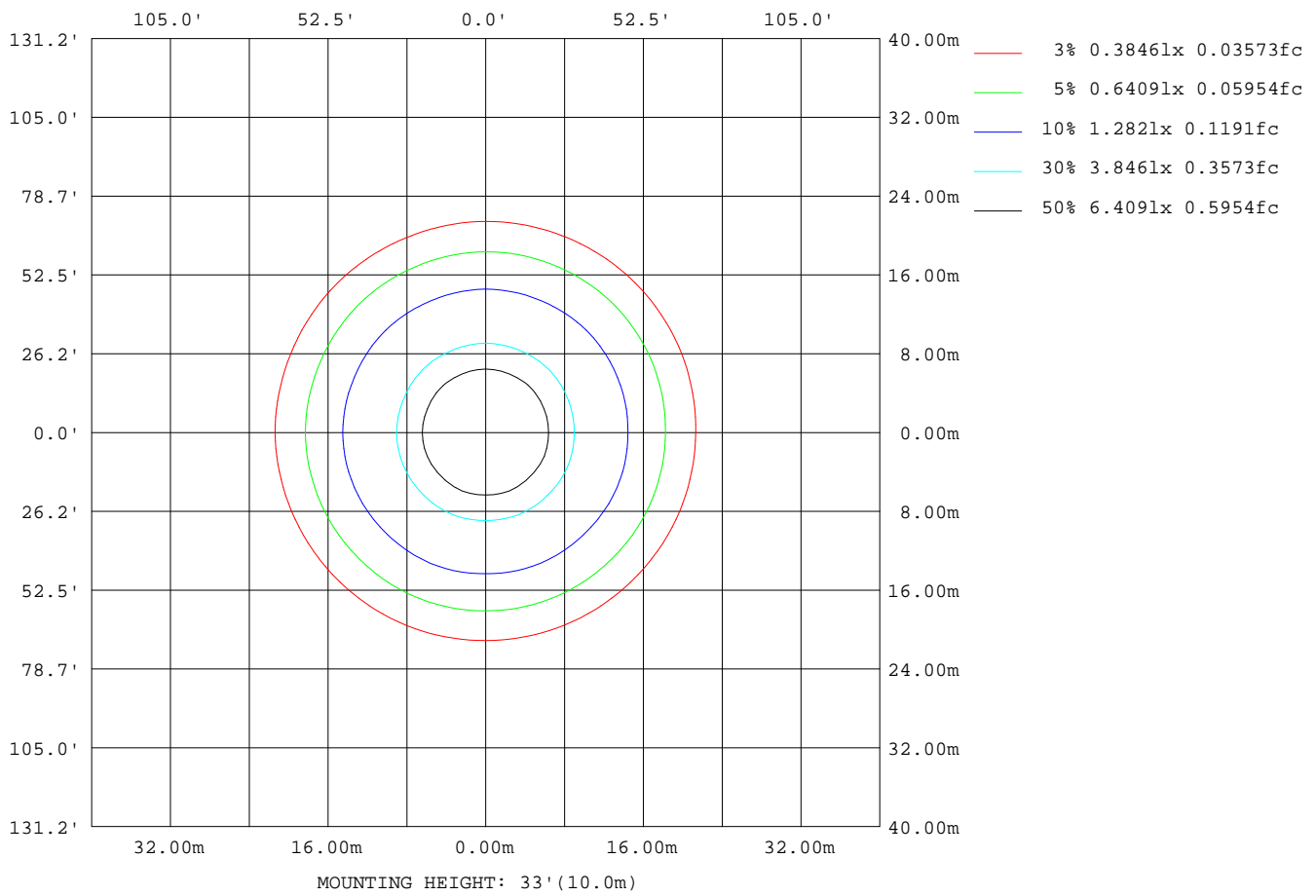
Note:The Curves indicate the illuminated area and the average illumination when the luminaire is at different distance.

C Range: 0 - 360DEG
 C Interval: 22.5DEG
 Test Speed: HIGH
 Temperature:25.0DEG
 Operators:Water
 Test Date:2024-08-27

γ Range: 0 - 180DEG
 γ Interval: 1.0DEG
 Test System:EVERFINE GO-R5000_V2 SYSTEM V2.00.446
 Humidity:44%
 Test Distance:2.519m [K=1.0000]
 Remarks:

ISOLUX DIAGRAM

Test:U:120.03V I:0.3813A P:43.590W PF:0.9524 Freq:60.00Hz Lamp Flux:3843.98x1 lm		
NAME:ASD-MPR-32D45WH 5000K	TYPE: N/A	WEIGHT: N/A
SPEC.:LED Luminaires	DIM.: N/A	SERIAL No.: N/A
MFR.: ASD Lighting Corp	SUR.: N/A	Shielding Angle: N/A



C Range: 0 - 360DEG
 C Interval: 22.5DEG
 Test Speed: HIGH
 Temperature:25.0DEG
 Operators:Water
 Test Date:2024-08-27

γ Range: 0 - 180DEG
 γ Interval: 1.0DEG
 Test System:EVERFINE GO-R5000_V2 SYSTEM V2.00.446
 Humidity:44%
 Test Distance:2.519m [K=1.0000]
 Remarks:

LED Avg.L Report

Test:U:120.03V I:0.3813A P:43.590W PF:0.9524 Freq:60.00Hz Lamp Flux:3843.98x1 lm		
NAME:ASD-MPR-32D45WH 5000K	TYPE: N/A	WEIGHT: N/A
SPEC.: LED Luminaires	DIM.: N/A	SERIAL No.: N/A
MFR.: ASD Lighting Corp	SUR.: N/A	Shielding Angle: N/A

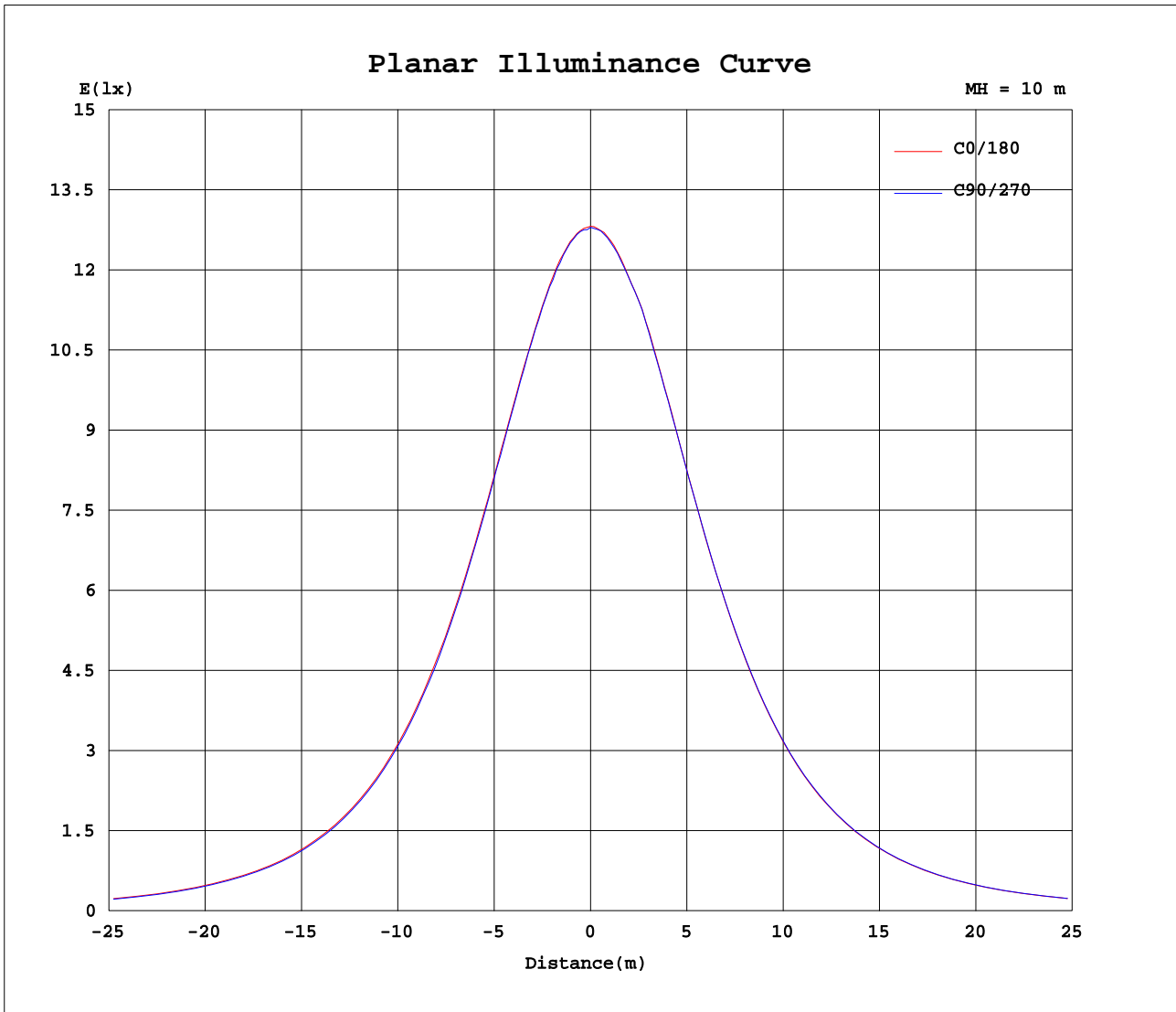
AvgL	cd/m2
L_0~180(65)av	2572
L_0~180(75)av	2385
L_0~180(85)av	2039
L_90~270(65)av	2547
L_90~270(75)av	2334
L_90~270(85)av	1927
L_45(65)av	2564
L_45(75)av	2361
L_45(85)av	1978

Standard: GB/T 29293-2012

C Range: 0 - 360DEG
 C Interval: 22.5DEG
 Test Speed: HIGH
 Temperature:25.0DEG
 Operators:Water
 Test Date:2024-08-27

γ Range: 0 - 180DEG
 γ Interval: 1.0DEG
 Test System:EVERFINE GO-R5000_V2 SYSTEM V2.00.446
 Humidity:44%
 Test Distance:2.519m [K=1.0000]
 Remarks:

Planar Illuminance Curve



C Range: 0 - 360DEG
C Interval: 22.5DEG
Test Speed: HIGH
Temperature: 25.0DEG
Operators: Water
Test Date: 2024-08-27

γ Range: 0 - 180DEG
 γ Interval: 1.0DEG
Test System: EVERFINE GO-R5000_V2 SYSTEM V2.00.446
Humidity: 44%
Test Distance: 2.519m [K=1.0000]
Remarks:

LUMINOUS DISTRIBUTION INTENSITY DATA

Test:U:120.03V I:0.3813A P:43.590W PF:0.9524 Freq:60.00Hz Lamp Flux:3843.98x1 lm		
NAME:ASD-MPR-32D45WH 5000K	TYPE: N/A	WEIGHT: N/A
SPEC.: LED Luminaires	DIM.: N/A	SERIAL No.: N/A
MFR.: ASD Lighting Corp	SUR.: N/A	Shielding Angle: N/A

Table--1

UNIT: cd

C(DEG) γ (DEG)	0	22.5	45	67.5	90	112.5	135	157.5	180	202.5	225	247.5	270	292.5	315	337.5			
0	1279	1279	1279	1279	1279	1279	1279	1279	1279	1279	1279	1279	1279	1279	1279	1279			
5	1272	1272	1275	1274	1272	1275	1272	1273	1274	1273	1275	1274	1274	1275	1275	1275			
10	1258	1259	1258	1256	1257	1258	1257	1258	1260	1259	1264	1260	1259	1262	1262	1260			
15	1232	1242	1233	1243	1229	1241	1229	1245	1248	1234	1251	1235	1249	1237	1250	1235			
20	1197	1205	1195	1205	1194	1208	1197	1208	1211	1199	1215	1202	1212	1203	1215	1201			
25	1153	1161	1151	1161	1146	1159	1150	1162	1166	1155	1171	1158	1167	1158	1172	1153			
30	1099	1103	1096	1103	1091	1105	1096	1106	1112	1102	1115	1104	1115	1104	1115	1102			
35	1034	1041	1028	1038	1026	1040	1029	1042	1048	1036	1052	1040	1052	1043	1053	1039			
40	963	969	957	963	951	966	957	969	975	964	979	970	980	970	981	968			
45	880	886	874	880	871	882	875	887	893	883	897	888	899	893	900	888			
50	794	796	785	790	781	794	786	797	804	796	808	801	811	804	812	802			
55	699	700	689	692	685	695	690	700	708	702	712	706	715	710	718	708			
60	599	599	590	589	586	594	594	600	607	601	611	606	614	611	617	615			
65	497	492	485	482	482	487	489	494	502	500	504	502	507	509	512	509			
70	389	384	376	374	373	379	379	386	394	391	395	394	400	402	405	402			
75	281	276	268	266	265	270	272	277	286	283	286	285	290	293	297	294			
80	177	173	165	164	161	166	167	173	181	178	181	180	186	188	192	189			
85	80.6	77.3	70.7	68.7	66.1	68.7	69.4	74.1	82.6	81.5	84.1	83.7	88.2	89.8	92.6	90.3			
90	0.00	0.00	0.00	0.00	0.00	0.00	0.00	0.00	0.00	0.00	0.00	0.00	0.00	0.00	0.00	0.00			
95	0.00	0.00	0.00	0.00	0.00	0.00	0.00	0.00	0.00	0.00	0.00	0.00	0.00	0.00	0.00	0.00			
100	0.00	0.00	0.00	0.00	0.00	0.00	0.00	0.00	0.00	0.00	0.00	0.00	0.00	0.00	0.00	0.00			
105	0.00	0.00	0.00	0.00	0.00	0.00	0.00	0.00	0.00	0.00	0.00	0.00	0.00	0.00	0.00	0.00			
110	0.00	0.00	0.00	0.00	0.00	0.00	0.00	0.00	0.00	0.00	0.00	0.00	0.00	0.00	0.00	0.00			
115	0.00	0.00	0.00	0.00	0.00	0.00	0.00	0.00	0.00	0.00	0.00	0.00	0.00	0.00	0.00	0.00			
120	0.00	0.00	0.00	0.00	0.00	0.00	0.00	0.00	0.00	0.00	0.00	0.00	0.00	0.00	0.00	0.00			
125	0.00	0.00	0.00	0.00	0.00	0.00	0.00	0.00	0.00	0.00	0.00	0.00	0.00	0.00	0.00	0.00			
130	0.00	0.00	0.00	0.00	0.00	0.00	0.00	0.00	0.00	0.00	0.00	0.00	0.00	0.00	0.00	0.00			
135	0.00	0.00	0.00	0.00	0.00	0.00	0.00	0.00	0.00	0.00	0.00	0.00	0.00	0.00	0.00	0.00			
140	0.00	0.00	0.00	0.00	0.00	0.00	0.00	0.00	0.00	0.00	0.00	0.00	0.00	0.00	0.00	0.00			
145	0.00	0.00	0.00	0.00	0.00	0.00	0.00	0.00	0.00	0.00	0.00	0.00	0.00	0.00	0.00	0.00			
150	0.00	0.00	0.00	0.00	0.00	0.00	0.00	0.00	0.00	0.00	0.00	0.00	0.00	0.00	0.00	0.00			
155	0.00	0.00	0.00	0.00	0.00	0.00	0.00	0.00	0.00	0.00	0.00	0.00	0.00	0.00	0.00	0.00			
160	0.00	0.00	0.00	0.00	0.00	0.00	0.00	0.00	0.00	0.00	0.00	0.00	0.00	0.00	0.00	0.00			
165	0.00	0.00	0.00	0.00	0.00	0.00	0.00	0.00	0.00	0.00	0.00	0.00	0.00	0.00	0.00	0.00			
170	0.00	0.00	0.00	0.00	0.00	0.00	0.00	0.00	0.00	0.00	0.00	0.00	0.00	0.00	0.00	0.00			
175	0.00	0.00	0.00	0.00	0.00	0.00	0.00	0.00	0.00	0.00	0.00	0.00	0.00	0.00	0.00	0.00			
180	0.00	0.00	0.00	0.00	0.00	0.00	0.00	0.00	0.00	0.00	0.00	0.00	0.00	0.00	0.00	0.00			

C Range: 0 - 360DEG
 C Interval: 22.5DEG
 Test Speed: HIGH
 Temperature:25.0DEG
 Operators:Water
 Test Date:2024-08-27

γ Range: 0 - 180DEG
 γ Interval: 1.0DEG
 Test System:EVERFINE GO-R5000_V2 SYSTEM V2.00.446
 Humidity:44%
 Test Distance:2.519m [K=1.0000]
 Remarks: