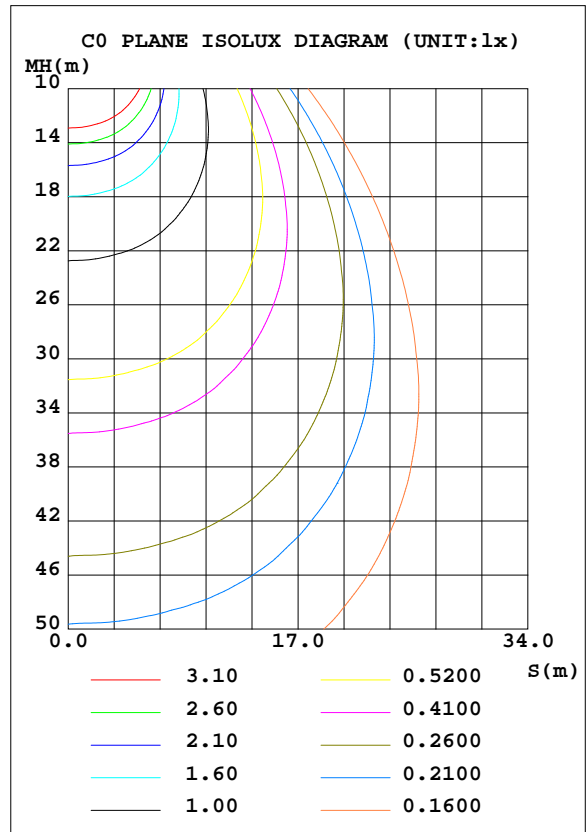
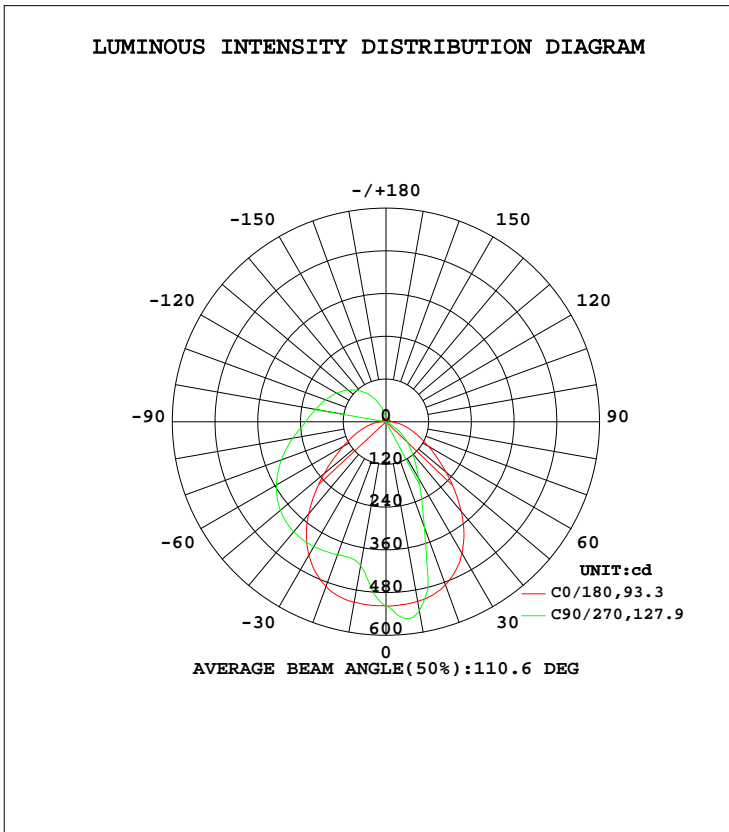


LUMINAIRE PHOTOMETRIC TEST REPORT

Test:U:120.1V I:0.3108A P:36.55W PF:0.9796 Lamp Flux:1765.85x1 lm		
NAME: LED luminaires	TYPE:N/A	WEIGHT:N/A
SPEC.:ASD-LVF24M-6D35CC-BK 3000K	DIM.: N/A	SERIAL No.:N/A
MFR.: ASD Lighting corp	SUR.:N/A	Shielding Angle:N/A

DATA OF LAMP		PHOTOMETRIC DATA Eff: 48.31 lm/W			
MODEL	PSZ2GH221125005-10	I <sub>max</sub> (cd)	556.2	S/MH(C0/180)	1.22
NOMINAL POWER(W)		LOR(%)	100.0	S/MH(C90/270)	0.74
RATED VOLTAGE(V)	120	TOTAL FLUX(lm)	1765.9	η UP, DN(C0-180)	21.0,55.4
NOMINAL FLUX(lm)	1765.85	CIE CLASS	SEMI-D.	η UP, DN(C180-360)	0.6,23.0
LAMPS INSIDE	1	η up(%)	21.6	CIBSE SHR NOM	1.00
TEST VOLTAGE(V)	120	η down(%)	78.4	CIBSE SHR MAX	1.15



C Range: 0 - 360DEG  
 C Interval: 22.5DEG  
 Test Speed: HIGH  
 Temperature:25.1DEG  
 Operators:Carl  
 Test Date:2022-11-30

Carl Deng

γ Range: 0 - 180DEG  
 γ Interval: 1.0DEG  
 Test System:EVERFINE GO-R5000\_V2 SYSTEM V2.0.351  
 Humidity:42%  
 Test Distance:2.532m [K=1.0000]  
 Remarks:

Reviewed by : Henry He

ZONAL FLUX DIAGRAM

ZONAL FLUX DIAGRAM:

γ	C0	C45	C90	C135	C180	C225	C270	C315	γ	Φ zone	Φ total	%lum, lamp
10	514.9	441.0	410.9	439.4	512.4	554.9	539.1	554.6	0- 10	48.51	48.51	2.75,2.75
20	492.1	398.9	397.6	399.3	488.2	476.7	315.6	475.9	10- 20	131.0	179.5	10.2,10.2
30	432.9	396.2	404.9	396.3	427.5	277.0	183.9	278.4	20- 30	179.3	358.8	20.3,20.3
40	338.4	388.7	403.5	389.3	329.4	170.0	114.4	172.0	30- 40	204.0	562.8	31.9,31.9
50	226.8	373.1	387.3	374.0	220.4	102.8	65.22	104.4	40- 50	206.0	768.9	43.5,43.5
60	139.4	347.2	355.3	348.1	137.1	51.36	16.16	53.44	50- 60	191.7	960.6	54.4,54.4
70	82.69	311.4	312.7	312.1	81.87	2.842	0.3594	4.244	60- 70	166.4	1127	63.8,63.8
80	43.57	269.1	265.8	269.8	42.90	0.3519	0.3922	0.3942	70- 80	140.5	1267	71.8,71.8
90	16.13	228.7	225.6	229.2	16.02	0.3918	0.4543	0.4512	80- 90	116.7	1384	78.4,78.4
100	10.63	201.9	201.5	202.3	12.31	0.4318	0.5042	0.4986	90-100	99.46	1484	84,84
110	9.867	176.2	180.9	176.5	11.10	0.3594	0.4190	0.4071	100-110	84.72	1568	88.8,88.8
120	9.036	150.5	160.9	151.0	10.30	0.3018	0.3380	0.3354	110-120	69.10	1637	92.7,92.7
130	11.18	123.8	138.8	124.4	12.27	0.3004	0.3332	0.3359	120-130	53.11	1691	95.7,95.7
140	12.24	95.56	113.1	96.06	13.15	0.3022	0.3234	0.3490	130-140	37.34	1728	97.9,97.9
150	13.43	65.99	83.45	66.42	13.11	0.3567	0.3560	0.4182	140-150	23.00	1751	99.2,99.2
160	7.919	36.58	50.38	36.18	7.898	1.593	0.4634	0.5478	150-160	11.29	1762	99.8,99.8
170	2.028	10.62	17.89	7.290	1.443	0.7164	0.6305	0.9823	160-170	3.355	1766	100,100
180	1.969	1.832	1.009	1.898	1.989	1.998	1.985	1.938	170-180	0.2891	1766	100,100
DEG	LUMINOUS INTENSITY:cd									UNIT:lm		

Conical surface Flux(90deg): 666.72 lm

%lum = 37.8%  
%lamp = 37.8%

Conical surface Flux(120deg): 960.65 lm

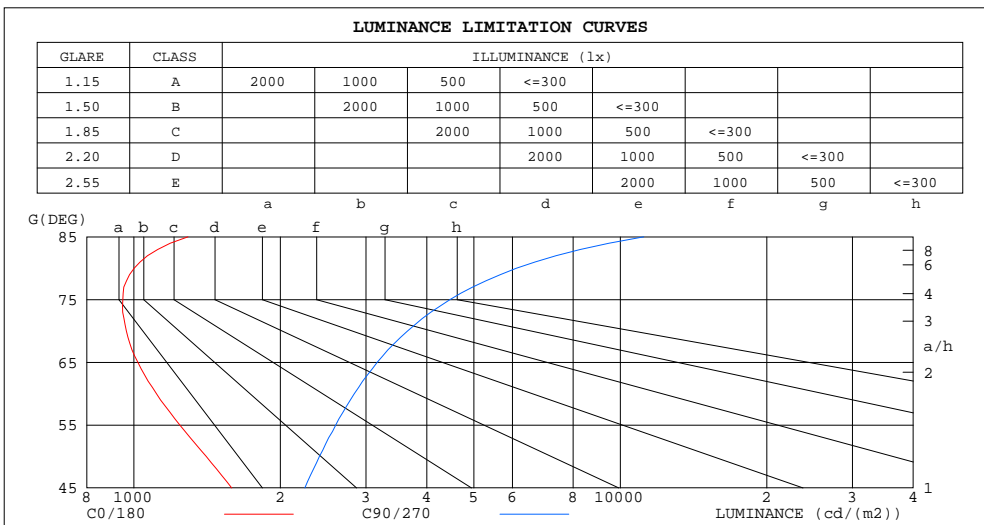
%lum = 54.4%  
%lamp = 54.4%

C Range: 0 - 360DEG  
C Interval: 22.5DEG  
Test Speed: HIGH  
Temperature:25.1DEG  
Operators:Carl  
Test Date:2022-11-30

γ Range: 0 - 180DEG  
γ Interval: 1.0DEG  
Test System:EVERFINE GO-R5000\_V2 SYSTEM V2.0.351  
Humidity:42%  
Test Distance:2.532m [K=1.0000]  
Remarks:

LUMINANCE LIMITATION CURVES

Test:U:120.1V I:0.3108A P:36.55W PF:0.9796 Lamp Flux:1765.85x1 lm		
NAME: LED luminaires	TYPE:N/A	WEIGHT:N/A
SPEC.:ASD-LVF24M-6D35CC-BK 3000K	DIM.: N/A	SERIAL No.:N/A
MFR.: ASD Lighting corp	SUR.:N/A	Shielding Angle:N/A



LUMINANCE cd/(m2)		
G (DEG)	C0/180	C90/270
85	1292	11168
80	1001	6116
75	949	4466
70	965	3653
65	1019	3164
60	1113	2839
55	1243	2599
50	1408	2407
45	1588	2245

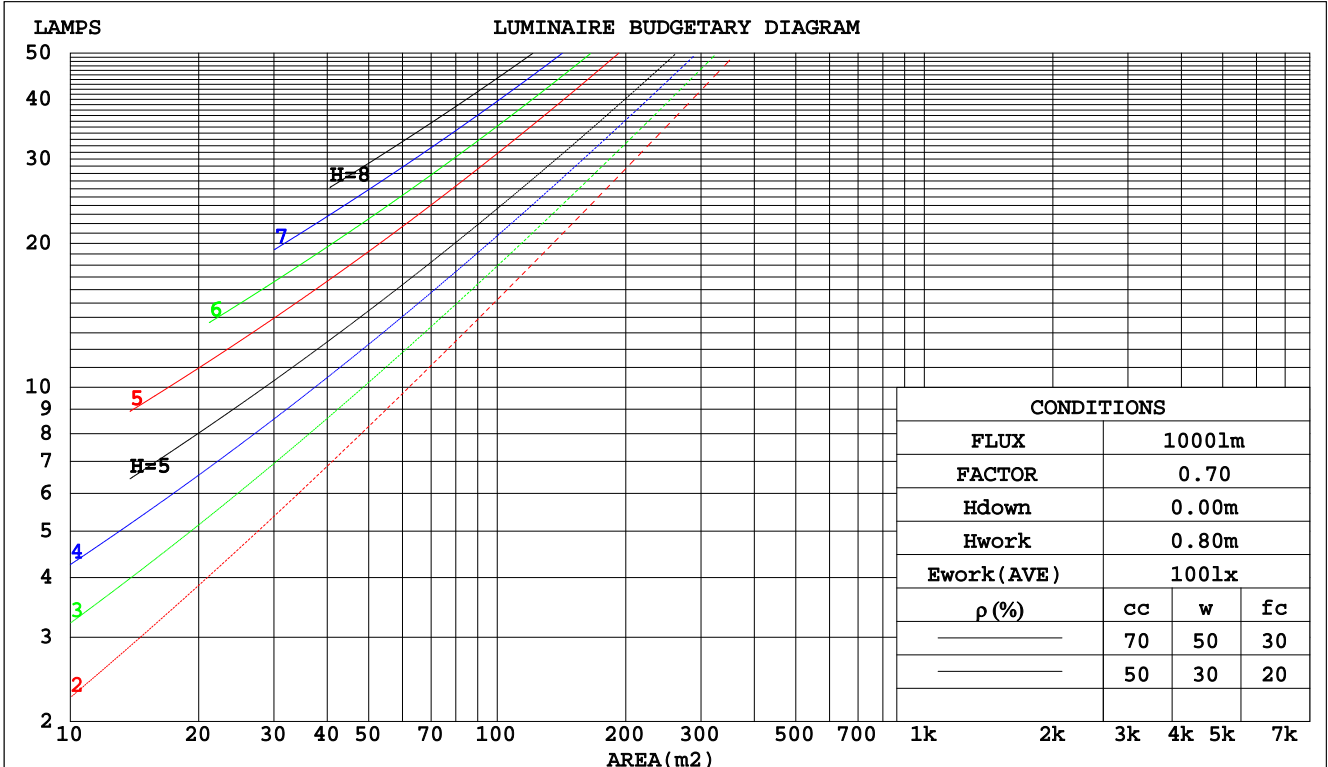
C Range: 0 - 360DEG  
 C Interval: 22.5DEG  
 Test Speed: HIGH  
 Temperature:25.1DEG  
 Operators:Carl  
 Test Date:2022-11-30

$\gamma$  Range: 0 - 180DEG  
 $\gamma$  Interval: 1.0DEG  
 Test System:EVERFINE GO-R5000\_V2 SYSTEM V2.0.351  
 Humidity:42%  
 Test Distance:2.532m [K=1.0000]  
 Remarks:

CU AND LUMINAIRE BUDGETARY ESTIMATE DIAGRAM

Test:U:120.1V I:0.3108A P:36.55W PF:0.9796 Lamp Flux:1765.85x1 lm		
NAME: LED luminaires	TYPE:N/A	WEIGHT:N/A
SPEC.:ASD-LVF24M-6D35CC-BK 3000K	DIM.: N/A	SERIAL No.:N/A
MFR.: ASD Lighting corp	SUR.:N/A	Shielding Angle:N/A

pcc	80%			70%			50%			30%			10%			0
	50%	30%	10%	50%	30%	10%	50%	30%	10%	50%	30%	10%	50%	30%	10%	0
pw																0
pfc	20%			20%			20%			20%			20%			0
RCR	RCR:Room Cavity Ratio      Coefficients of Utilization(CU)															
0.0	1.14	1.14	1.14	1.09	1.09	1.09	.99	.99	.99	.90	.90	.90	.82	.82	.82	.78
1.0	.96	.91	.86	.92	.87	.83	.83	.80	.76	.76	.73	.70	.69	.67	.64	.61
2.0	.83	.76	.69	.79	.72	.67	.72	.67	.62	.66	.61	.57	.59	.56	.53	.50
3.0	.73	.64	.57	.69	.62	.55	.63	.57	.52	.58	.52	.48	.52	.48	.45	.41
4.0	.64	.55	.48	.61	.53	.47	.56	.49	.44	.51	.46	.41	.47	.42	.38	.35
5.0	.57	.48	.41	.55	.47	.40	.50	.43	.38	.46	.40	.36	.42	.37	.33	.31
6.0	.52	.43	.36	.49	.41	.35	.45	.38	.33	.42	.36	.31	.38	.33	.29	.27
7.0	.47	.38	.32	.45	.37	.31	.41	.34	.29	.38	.32	.28	.35	.30	.26	.24
8.0	.43	.34	.28	.41	.33	.28	.38	.31	.26	.35	.29	.25	.32	.27	.23	.21
9.0	.39	.31	.26	.38	.30	.25	.35	.28	.24	.32	.27	.22	.30	.25	.21	.19
10.0	.36	.28	.23	.35	.28	.23	.32	.26	.22	.30	.24	.20	.28	.23	.19	.18



C Range: 0 - 360DEG  
 C Interval: 22.5DEG  
 Test Speed: HIGH  
 Temperature:25.1DEG  
 Operators:Carl  
 Test Date:2022-11-30

γ Range: 0 - 180DEG  
 γ Interval: 1.0DEG  
 Test System:EVERFINE GO-R5000\_V2 SYSTEM V2.0.351  
 Humidity:42%  
 Test Distance:2.532m [K=1.0000]  
 Remarks:

WEC AND CCEC

Test:U:120.1V I:0.3108A P:36.55W PF:0.9796 Lamp Flux:1765.85x1 lm		
NAME: LED luminaires	TYPE:N/A	WEIGHT:N/A
SPEC.:ASD-LVF24M-6D35CC-BK 3000K	DIM.: N/A	SERIAL No.:N/A
MFR.: ASD Lighting corp	SUR.:N/A	Shielding Angle:N/A

ρcc	80%			70%			50%			30%			10%			0
ρw	50%	30%	10%	50%	30%	10%	50%	30%	10%	50%	30%	10%	50%	30%	10%	0
ρfc	20%			20%			20%			20%			20%			0
RCR	RCR:Room Cavity Ratio						Wall Exitance Coefficients(WEC)									
0.0																
1.0	.361	.205	.065	.347	.198	.063	.322	.184	.059	.298	.172	.055	.276	.160	.052	
2.0	.314	.172	.053	.302	.166	.051	.278	.155	.048	.257	.144	.045	.237	.134	.042	
3.0	.280	.149	.045	.269	.144	.043	.248	.134	.041	.228	.125	.038	.210	.116	.036	
4.0	.253	.132	.039	.243	.127	.038	.224	.119	.035	.206	.111	.033	.190	.103	.031	
5.0	.231	.118	.034	.222	.114	.033	.204	.106	.031	.188	.099	.030	.173	.093	.028	
6.0	.212	.106	.030	.204	.103	.030	.188	.096	.028	.173	.090	.026	.159	.084	.025	
7.0	.196	.097	.028	.189	.094	.027	.174	.088	.025	.161	.082	.024	.148	.077	.023	
8.0	.183	.089	.025	.176	.086	.024	.162	.081	.023	.150	.076	.022	.138	.071	.021	
9.0	.171	.083	.023	.164	.080	.022	.152	.075	.021	.140	.070	.020	.129	.066	.019	
10.0	.160	.077	.021	.154	.074	.021	.142	.070	.020	.132	.065	.019	.121	.061	.018	

ρcc	80%			70%			50%			30%			10%			0
ρw	50%	30%	10%	50%	30%	10%	50%	30%	10%	50%	30%	10%	50%	30%	10%	0
ρfc	20%			20%			20%			20%			20%			0
RCR	RCR:Room Cavity Ratio						Ceiling Cavity Exitance Coefficients(CCEC)									
0.0	.355	.355	.355	.304	.304	.304	.207	.207	.207	.119	.119	.119	.038	.038	.038	
1.0	.350	.322	.296	.299	.276	.255	.205	.190	.176	.118	.110	.103	.038	.035	.033	
2.0	.342	.299	.262	.293	.257	.227	.201	.178	.158	.116	.104	.093	.037	.034	.030	
3.0	.334	.282	.241	.287	.244	.209	.197	.169	.147	.114	.099	.086	.037	.032	.028	
4.0	.327	.270	.226	.280	.233	.197	.193	.163	.139	.111	.095	.082	.036	.031	.027	
5.0	.319	.260	.216	.274	.225	.188	.189	.157	.133	.109	.092	.079	.035	.030	.026	
6.0	.312	.252	.209	.268	.218	.182	.185	.153	.129	.107	.090	.077	.035	.029	.025	
7.0	.305	.245	.204	.262	.213	.178	.181	.149	.126	.105	.088	.075	.034	.029	.025	
8.0	.298	.240	.200	.257	.208	.174	.178	.146	.124	.103	.086	.074	.033	.028	.024	
9.0	.292	.235	.197	.252	.204	.171	.174	.143	.122	.102	.085	.073	.033	.028	.024	
10.0	.287	.231	.194	.247	.201	.169	.171	.141	.120	.100	.083	.072	.032	.027	.024	

C Range: 0 - 360DEG  
 C Interval: 22.5DEG  
 Test Speed: HIGH  
 Temperature:25.1DEG  
 Operators:Carl  
 Test Date:2022-11-30

γ Range: 0 - 180DEG  
 γ Interval: 1.0DEG  
 Test System:EVERFINE GO-R5000\_V2 SYSTEM V2.0.351  
 Humidity:42%  
 Test Distance:2.532m [K=1.0000]  
 Remarks:

UGR(Unified Glare Rating) Table

Test:U:120.1V I:0.3108A P:36.55W PF:0.9796 Lamp Flux:1765.85x1 lm										
NAME: LED luminaires					TYPE:N/A			WEIGHT:N/A		
SPEC.:ASD-LVF24M-6D35CC-BK 3000K					DIM.: N/A			SERIAL No.:N/A		
MFR.: ASD Lighting corp					SUR.:N/A			Shielding Angle:N/A		
ceiling/cavity	0.7	0.7	0.5	0.5	0.3	0.7	0.7	0.5	0.5	0.3
walls	0.5	0.3	0.5	0.3	0.3	0.5	0.3	0.5	0.3	0.3
working plane	0.2	0.2	0.2	0.2	0.2	0.2	0.2	0.2	0.2	0.2
Room dimensions	Viewed crosswise					Viewed endwise				
x = 2H y = 2H	14.4	15.7	15.0	16.3	16.9	16.6	17.9	17.2	18.4	19.1
3H	16.1	17.3	16.7	17.9	18.5	19.3	20.5	19.9	21.1	21.7
4H	16.8	17.9	17.4	18.5	19.2	20.8	21.9	21.4	22.5	23.2
6H	17.4	18.4	18.0	19.0	19.8	22.4	23.4	23.0	24.0	24.7
8H	17.6	18.6	18.3	19.3	20.0	23.2	24.3	23.9	24.9	25.6
12H	17.8	18.8	18.5	19.4	20.2	24.3	25.2	24.9	25.9	26.6
4H 2H	16.0	17.1	16.6	17.7	18.4	17.4	18.5	18.0	19.1	19.8
3H	18.2	19.2	18.8	19.8	20.5	20.4	21.3	21.0	22.0	22.7
4H	19.3	20.2	19.9	20.8	21.6	22.0	22.9	22.7	23.6	24.3
6H	20.2	21.0	20.9	21.7	22.5	23.8	24.6	24.5	25.3	26.1
8H	20.6	21.4	21.3	22.1	22.9	24.8	25.5	25.5	26.2	27.0
12H	20.9	21.6	21.7	22.3	23.2	25.9	26.6	26.6	27.3	28.1
8H 4H	20.6	21.3	21.3	22.0	22.8	22.6	23.3	23.3	24.0	24.8
6H	22.1	22.7	22.8	23.5	24.3	24.7	25.3	25.4	26.0	26.9
8H	22.9	23.4	23.6	24.2	25.0	25.9	26.4	26.6	27.2	28.1
12H	23.5	24.0	24.3	24.8	25.7	27.2	27.7	28.0	28.5	29.4
12H 4H	20.9	21.6	21.6	22.3	23.2	22.7	23.4	23.4	24.1	24.9
6H	22.7	23.3	23.4	24.0	24.9	24.9	25.5	25.7	26.2	27.1
8H	23.7	24.2	24.4	24.9	25.8	26.2	26.7	27.0	27.5	28.4
Variations with the observer position at spacings:										
S = 1.0H	+ 0.1 / - 0.1					+ 0.1 / - 0.1				
1.5H	+ 0.2 / - 0.3					+ 0.2 / - 0.3				
2.0H	+ 0.3 / - 0.5					+ 0.3 / - 0.4				

CIE Pub.117 Corrected 1766 lm Total Lamp Luminous Flux.(8log(F/F0) = 2.0)

C Range: 0 - 360DEG  
 C Interval: 22.5DEG  
 Test Speed: HIGH  
 Temperature:25.1DEG  
 Operators:Carl  
 Test Date:2022-11-30

γ Range: 0 - 180DEG  
 γ Interval: 1.0DEG  
 Test System:EVERFINE GO-R5000\_V2 SYSTEM V2.0.351  
 Humidity:42%  
 Test Distance:2.532m [K=1.0000]  
 Remarks:

UTILIZATION FACTORS TABLE

Test:U:120.1V I:0.3108A P:36.55W PF:0.9796 Lamp Flux:1765.85x1 lm		
NAME: LED luminaires	TYPE:N/A	WEIGHT:N/A
SPEC.:ASD-LVF24M-6D35CC-BK 3000K	DIM.: N/A	SERIAL No.:N/A
MFR.: ASD Lighting corp	SUR.:N/A	Shielding Angle:N/A

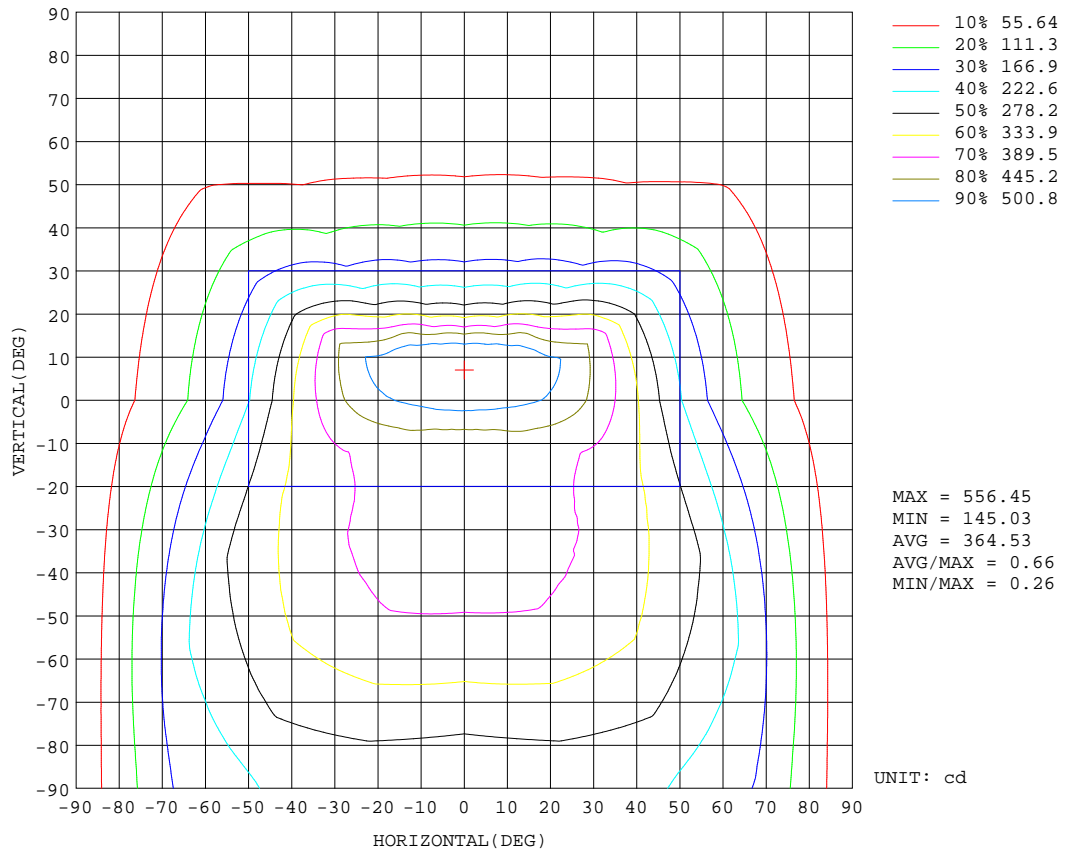
REFLECTANCE										
Ceiling	0.8	0.8	0.8	0.7	0.7	0.7	0.5	0.5	0.5	0
Walls	0.7	0.5	0.3	0.7	0.5	0.3	0.7	0.5	0.3	0
Working plane	0.2	0.2	0.2	0.2	0.2	0.2	0.2	0.2	0.2	0
ROOM INDEX	UTILIZATION FACTORS(PERCENT) $k(RI) \times RCR = 5$									
k = 0.60	49	38	31	48	37	30	46	36	30	23
0.80	59	46	38	57	45	38	54	44	37	29
1.00	66	54	46	64	53	45	60	53	44	35
1.25	73	61	53	70	59	52	66	56	50	40
1.50	78	66	58	75	64	57	70	61	54	44
2.00	85	74	66	81	72	65	75	67	61	49
2.50	89	79	72	85	77	70	79	72	66	53
3.00	93	84	77	89	81	74	81	75	70	56
4.00	97	89	83	93	86	80	85	80	75	60
5.00	100	93	88	95	90	85	87	83	79	63
ROOM INDEX	UF(total)									Direct
According to DIN EN 13032-2 2004			Suspended				SHRNOM = 1.25			

C Range: 0 - 360DEG  
 C Interval: 22.5DEG  
 Test Speed: HIGH  
 Temperature:25.1DEG  
 Operators:Carl  
 Test Date:2022-11-30

$\gamma$  Range: 0 - 180DEG  
 $\gamma$  Interval: 1.0DEG  
 Test System:EVERFINE GO-R5000\_V2 SYSTEM V2.0.351  
 Humidity:42%  
 Test Distance:2.532m [K=1.0000]  
 Remarks:

ISOCANDELA DIAGRAM

Test:U:120.1V I:0.3108A P:36.55W PF:0.9796 Lamp Flux:1765.85x1 lm		
NAME: LED luminaires	TYPE:N/A	WEIGHT:N/A
SPEC.:ASD-LVF24M-6D35CC-BK 3000K	DIM.: N/A	SERIAL No.:N/A
MFR.: ASD Lighting corp	SUR.:N/A	Shielding Angle:N/A



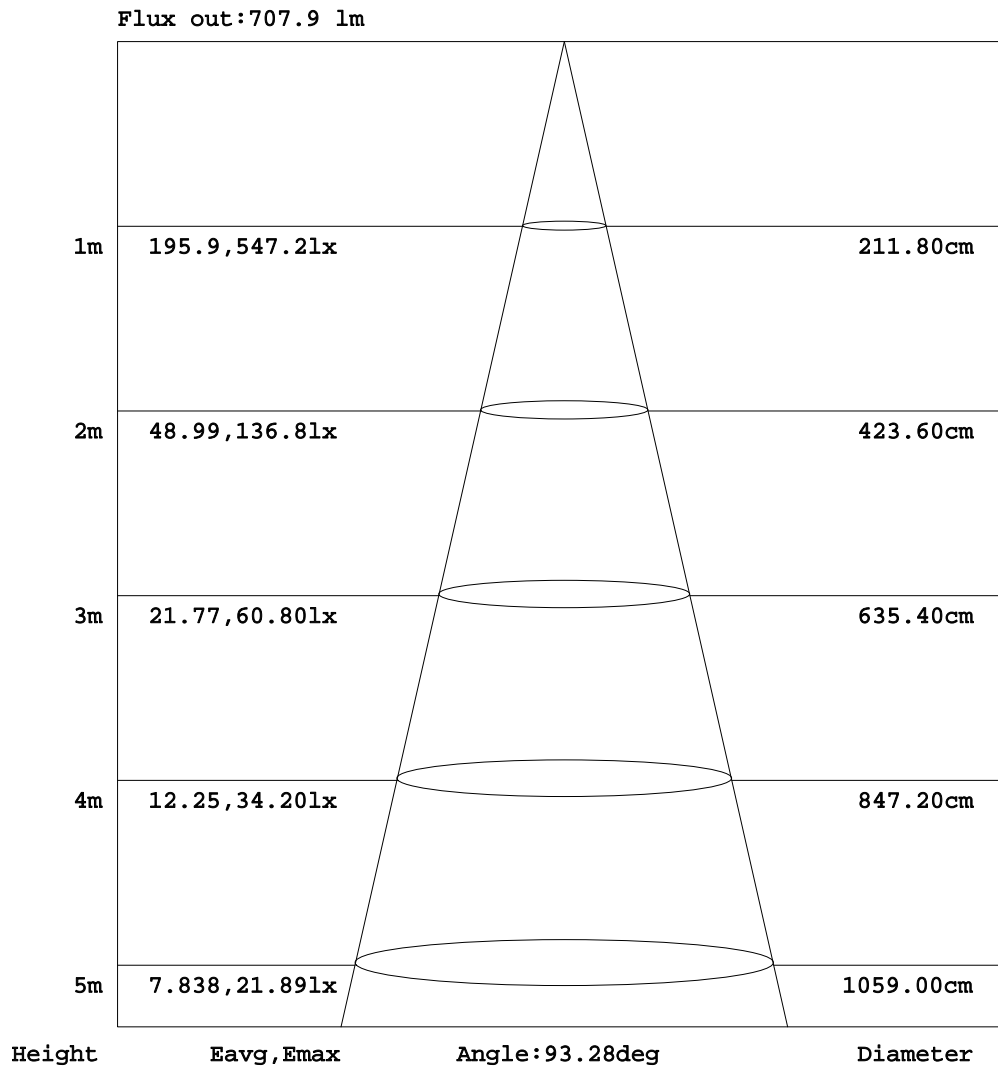
C Range: 0 - 360DEG  
 C Interval: 22.5DEG  
 Test Speed: HIGH  
 Temperature:25.1DEG  
 Operators:Carl  
 Test Date:2022-11-30

γ Range: 0 - 180DEG  
 γ Interval: 1.0DEG  
 Test System:EVERFINE GO-R5000\_V2 SYSTEM V2.0.351  
 Humidity:42%  
 Test Distance:2.532m [K=1.0000]  
 Remarks:



AAI Figure

Test:U:120.1V I:0.3108A P:36.55W PF:0.9796 Lamp Flux:1765.85x1 lm		
NAME: LED luminaires	TYPE:N/A	WEIGHT:N/A
SPEC.:ASD-LVF24M-6D35CC-BK 3000K	DIM.: N/A	SERIAL No.:N/A
MFR.: ASD Lighting corp	SUR.:N/A	Shielding Angle:N/A



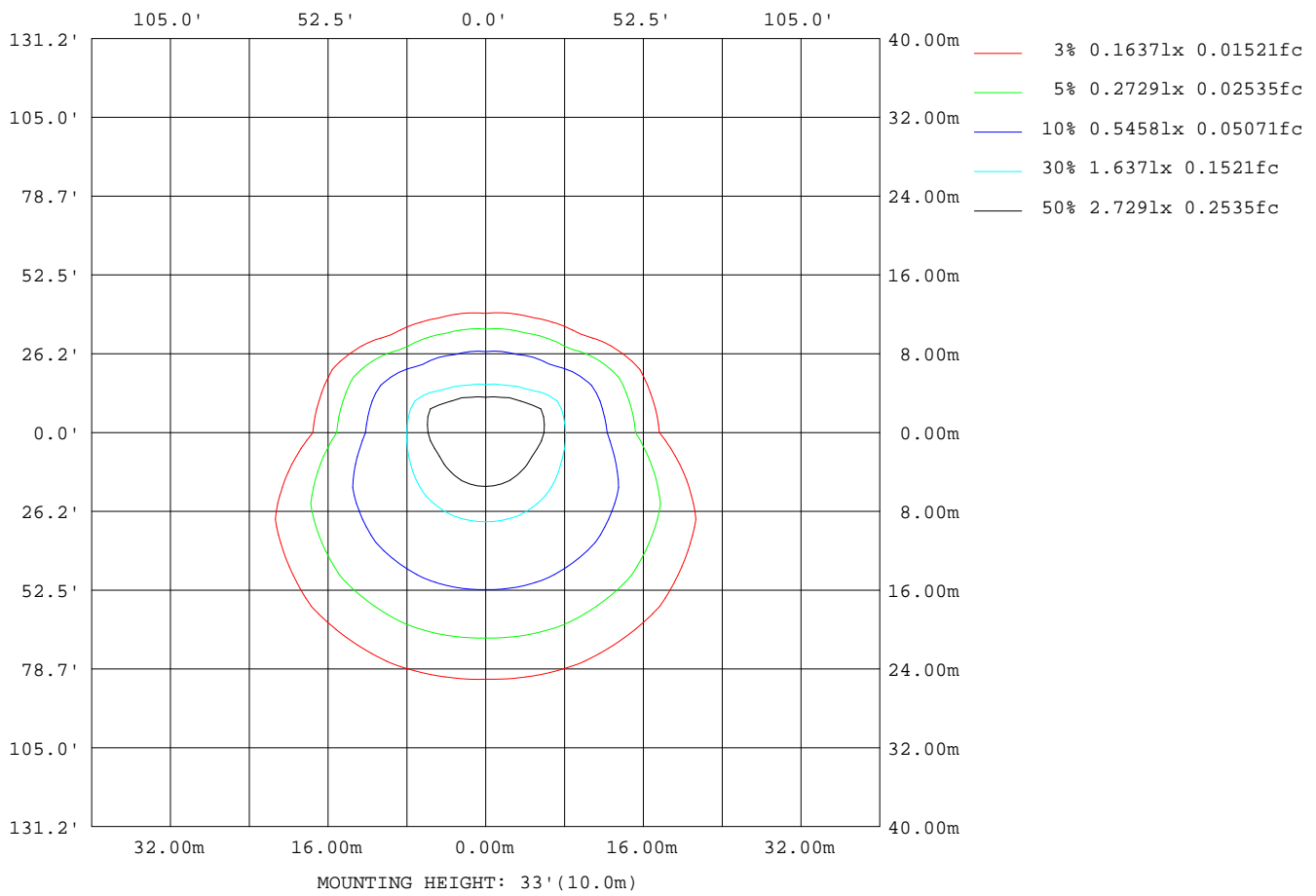
Note:The Curves indicate the illuminated area and the average illumination when the luminaire is at different distance.

C Range: 0 - 360DEG  
 C Interval: 22.5DEG  
 Test Speed: HIGH  
 Temperature:25.1DEG  
 Operators:Carl  
 Test Date:2022-11-30

γ Range: 0 - 180DEG  
 γ Interval: 1.0DEG  
 Test System:EVERFINE GO-R5000\_V2 SYSTEM V2.0.351  
 Humidity:42%  
 Test Distance:2.532m [K=1.0000]  
 Remarks:

ISOLUX DIAGRAM

Test:U:120.1V I:0.3108A P:36.55W PF:0.9796 Lamp Flux:1765.85x1 lm		
NAME: LED luminaires	TYPE:N/A	WEIGHT:N/A
SPEC.:ASD-LVF24M-6D35CC-BK 3000K	DIM.: N/A	SERIAL No.:N/A
MFR.: ASD Lighting corp	SUR.:N/A	Shielding Angle:N/A



C Range: 0 - 360DEG  
 C Interval: 22.5DEG  
 Test Speed: HIGH  
 Temperature:25.1DEG  
 Operators:Carl  
 Test Date:2022-11-30

$\gamma$  Range: 0 - 180DEG  
 $\gamma$  Interval: 1.0DEG  
 Test System:EVERFINE GO-R5000\_V2 SYSTEM V2.0.351  
 Humidity:42%  
 Test Distance:2.532m [K=1.0000]  
 Remarks:

**LED Avg.L Report**

Test:U:120.1V I:0.3108A P:36.55W PF:0.9796 Lamp Flux:1765.85x1 lm		
NAME: LED luminaires	TYPE:N/A	WEIGHT:N/A
SPEC.:ASD-LVF24M-6D35CC-BK 3000K	DIM.: N/A	SERIAL No.:N/A
MFR.: ASD Lighting corp	SUR.:N/A	Shielding Angle:N/A

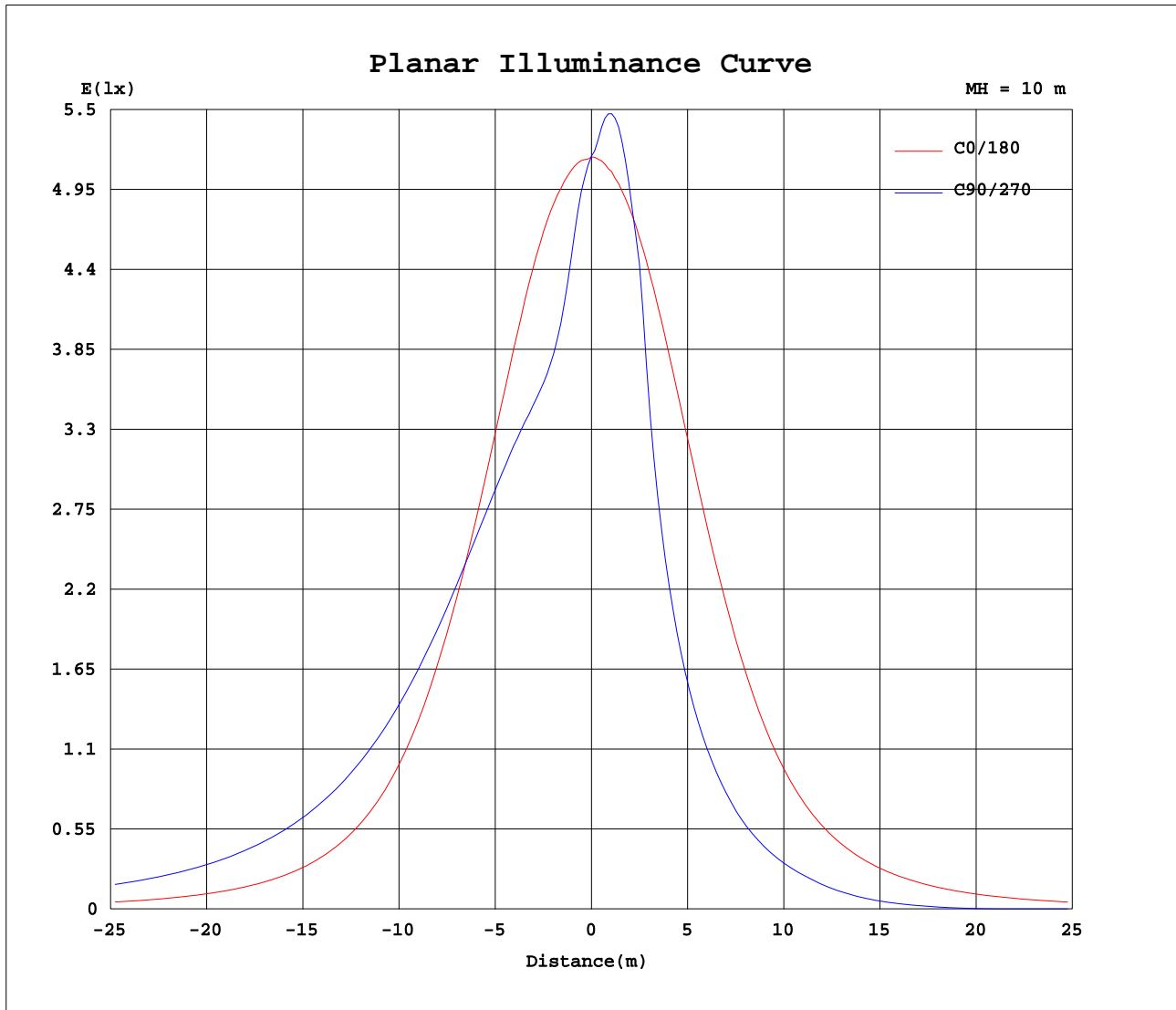
AvgL	cd/m2
L_0~180(65)av	1014
L_0~180(75)av	944
L_0~180(85)av	1267
L_90~270(65)av	1587
L_90~270(75)av	2235
L_90~270(85)av	5591
L_45(65)av	1681
L_45(75)av	2250
L_45(85)av	5681

Standard: GB/T 29293-2012

C Range: 0 - 360DEG  
 C Interval: 22.5DEG  
 Test Speed: HIGH  
 Temperature:25.1DEG  
 Operators:Carl  
 Test Date:2022-11-30

γ Range: 0 - 180DEG  
 γ Interval: 1.0DEG  
 Test System:EVERFINE GO-R5000\_V2 SYSTEM V2.0.351  
 Humidity:42%  
 Test Distance:2.532m [K=1.0000]  
 Remarks:

Planar Illuminance Curve



C Range: 0 - 360DEG  
 C Interval: 22.5DEG  
 Test Speed: HIGH  
 Temperature: 25.1DEG  
 Operators: Carl  
 Test Date: 2022-11-30

$\gamma$  Range: 0 - 180DEG  
 $\gamma$  Interval: 1.0DEG  
 Test System: EVERFINE GO-R5000\_V2 SYSTEM V2.0.351  
 Humidity: 42%  
 Test Distance: 2.532m [K=1.0000]  
 Remarks:

LUMINOUS DISTRIBUTION INTENSITY DATA

Test:U:120.1V I:0.3108A P:36.55W PF:0.9796 Lamp Flux:1765.85x1 lm		
NAME: LED luminaires	TYPE:N/A	WEIGHT:N/A
SPEC.:ASD-LVF24M-6D35CC-BK 3000K	DIM.: N/A	SERIAL No.:N/A
MFR.:ASD Lighting corp	SUR.:N/A	Shielding Angle:N/A

Table--1

UNIT: cd

C(DEG) γ (DEG)	0	22.5	45	67.5	90	112.5	135	157.5	180	202.5	225	247.5	270	292.5	315	337.5			
0	518	518	518	518	518	518	518	518	518	518	518	518	518	518	518	518			
5	517	505	489	474	470	475	488	504	516	527	543	550	553	552	543	528			
10	515	484	441	417	411	417	439	482	512	541	555	546	539	546	555	543			
15	508	458	410	397	395	397	409	454	505	545	529	488	457	488	528	545			
20	492	431	399	397	398	398	399	426	488	531	477	348	316	348	476	529			
25	467	407	397	401	402	402	397	404	462	501	358	260	236	262	360	496			
30	433	388	396	404	405	405	396	387	427	459	277	202	184	203	278	455			
35	390	371	393	405	406	406	394	370	382	403	216	160	145	161	218	405			
40	338	355	389	404	404	405	389	356	329	322	170	126	114	127	172	325			
45	281	339	382	399	397	400	383	339	273	257	133	98.7	89.4	99.5	135	260			
50	227	322	373	390	387	392	374	323	220	200	103	75.4	65.2	76.1	104	203			
55	179	305	362	378	373	379	363	306	175	155	77.6	48.3	38.8	49.4	79.0	157			
60	139	287	347	362	355	363	348	288	137	119	51.4	23.1	16.2	24.1	53.4	120			
65	108	267	330	343	335	344	331	268	107	89.4	24.2	3.37	1.18	4.05	26.2	90.3			
70	82.7	247	311	322	313	323	312	248	81.9	64.2	2.84	0.34	0.36	0.37	4.24	64.8			
75	61.5	226	291	300	289	300	292	228	60.9	35.4	0.34	0.36	0.37	0.38	0.38	36.6			
80	43.6	205	269	277	266	278	270	206	42.9	18.5	0.35	0.38	0.39	0.40	0.39	17.8			
85	28.2	183	247	255	244	255	248	185	27.1	16.9	0.38	0.42	0.43	0.44	0.43	16.3			
90	16.1	165	229	237	226	237	229	167	16.0	15.5	0.39	0.44	0.45	0.46	0.45	14.8			
95	13.7	154	215	224	213	223	215	155	13.7	14.5	0.42	0.47	0.49	0.49	0.49	13.9			
100	10.6	143	202	211	201	211	202	144	12.3	13.4	0.43	0.48	0.50	0.50	0.50	12.9			
105	10.1	132	189	199	191	199	189	133	11.6	12.2	0.40	0.44	0.46	0.46	0.45	11.7			
110	9.87	121	176	188	181	187	176	123	11.1	10.8	0.36	0.40	0.42	0.42	0.41	10.6			
115	9.37	111	163	176	171	176	164	113	10.4	8.96	0.33	0.36	0.38	0.38	0.37	8.89			
120	9.04	101	150	164	161	164	151	102	10.3	7.09	0.30	0.33	0.34	0.34	0.34	7.12			
125	10.0	90.6	137	152	150	152	138	92.0	11.4	5.35	0.30	0.33	0.34	0.34	0.33	5.46			
130	11.2	80.3	124	139	139	139	124	81.1	12.3	3.77	0.30	0.32	0.33	0.34	0.34	3.93			
135	11.9	70.0	110	125	126	126	111	70.2	12.9	2.35	0.30	0.32	0.33	0.34	0.34	2.56			
140	12.2	59.0	95.6	111	113	111	96.1	59.7	13.2	1.57	0.30	0.31	0.32	0.34	0.35	1.60			
145	12.5	48.5	80.9	95.8	98.8	96.1	81.4	49.1	13.7	1.99	0.32	0.32	0.33	0.35	0.38	1.18			
150	13.4	38.6	66.0	79.9	83.4	80.2	66.4	38.7	13.1	3.74	0.36	0.35	0.36	0.38	0.42	0.91			
155	10.9	28.7	51.0	64.6	67.2	63.5	47.1	29.8	10.5	5.76	0.79	0.40	0.41	0.43	0.49	1.14			
160	7.92	19.6	36.6	47.0	50.4	47.3	36.2	19.7	7.90	4.86	1.59	0.49	0.46	0.48	0.55	1.23			
165	3.46	10.9	22.9	31.0	33.9	31.4	21.3	9.09	4.02	3.71	1.73	0.62	0.55	0.54	0.68	1.46			
170	2.03	2.89	10.6	15.9	17.9	15.9	7.29	2.55	1.44	1.38	0.72	0.54	0.63	0.72	0.98	1.29			
175	1.98	2.10	2.31	4.26	4.50	2.14	2.26	1.96	1.72	1.73	1.56	1.39	0.84	1.34	1.55	1.52			
180	1.97	2.21	1.83	2.00	1.01	2.41	1.90	2.28	1.99	1.99	2.00	2.01	1.99	1.43	1.94	2.04			

C Range: 0 - 360DEG  
 C Interval: 22.5DEG  
 Test Speed: HIGH  
 Temperature:25.1DEG  
 Operators:Carl  
 Test Date:2022-11-30

γ Range: 0 - 180DEG  
 γ Interval: 1.0DEG  
 Test System:EVERFINE GO-R5000\_V2 SYSTEM V2.0.351  
 Humidity:42%  
 Test Distance:2.532m [K=1.0000]  
 Remarks: