



# LED SPORT LIGHT

► **DESIGN & OPTIONS** - LED SPORT LIGHT has a seamless link of aerometal materials and numerous vents on the heat sink for improved heat management to ensure stability. Advanced free-form optics designed with unique multi-scale lenses creates uniform light distribution, while the glare-reduction maximizes the light output. All fixtures are equipped with a 1-10V dimmable driver and 10Kv surge protection. It comes in 120-277V with a 5,000K color temperature and a BLACK finish.



**Models with High Voltage driver (277-480V) are available.**

► **INSTALLATION** - This fixture can be mounted in a few different ways: with a standard floodlight bracket, using a rotatable base with a straight arm bracket, or a slip fitter with a straight arm bracket. Refer to install instructions for more information.

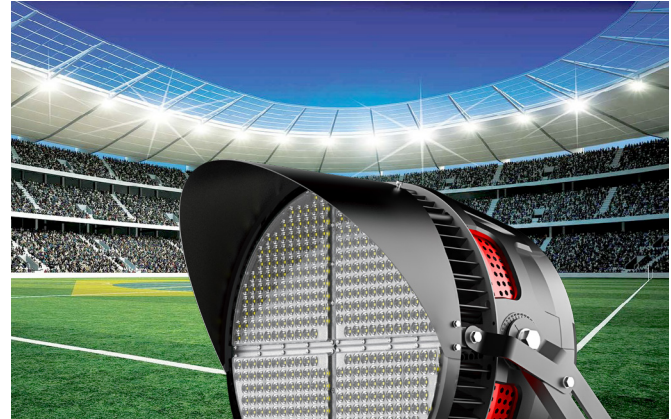
► **APPLICATION** - This LED SPORT LIGHT offers versatility for any outdoor sports lighting, parking lot lighting, dock lighting, high mast flood lighting, and stadium lighting. This fixture is IP66 rated and can operate in temperatures ranging from -40° to 122°F (-40° to 50°C), allowing it to be utilized in a wide variety of applications and climates.

► **ENERGY SAVINGS & EFFICIENCY** - With a calculated lifespan up to 145,000 hours, these fixtures are made to last decades under normal operation! This fixture can cut your electric bill by up to 80% instantly and will save you a significant amount of money in its lifetime.

► **CERTIFICATION & WARRANTY** - Buy with confidence: ASD provides a 7-year limited warranty along with UL certification to guarantee top quality products and safety!

DLC Premium classification allow participation in rebates; please check the rebate programs available in your state.

Catalog number	
Notes	
Type	



Model	Watts	Voltage	Dimmable	Lumens	CCT	Finish	Dimensions (LxWxH)	Beam Angle	Cord
ASD-SPFL-300D50-PRM	300W	120-277 V	1-10 V	40,483 lm	5,000 K	Black	15-5/8" x 14-1/2" x 14-1/2"	45°	6.5 ft
ASD-SPFL-500D50-PRM	500W	120-277 V	1-10 V	66,286 lm	5,000 K	Black	15-5/8" x 14-1/2" x 14-1/2"	45°	6.5 ft
ASD-SPFL2-750D50-PRM	750W	120-277 V	0-10 V	98,712 lm	5,000 K	Black	19-3/4" x 18-5/8" x 18-5/8"	40°	6.5 ft
ASD-SPFL2-1000D50-PRM	1000W	120-277 V	0-10 V	132,304 lm	5,000 K	Black	19-3/4" x 18-5/8" x 18-5/8"	40°	6.5 ft
<b>SPFLHV HIGH VOLTAGE</b>									
ASD-SPFLHV-300D50-PRM	300W	277-480 V	1-10 V	40,507 lm	5,000 K	Black	15-5/8" x 14-1/2" x 14-1/2"	45°	6.5 ft
ASD-SPFLHV-500D50-PRM	500W	277-480 V	1-10 V	66,352 lm	5,000 K	Black	15-5/8" x 14-1/2" x 14-1/2"	45°	6.5 ft
ASD-SPFLHV-750D50-PRM	750W	277-480 V	1-10 V	98,669 lm	5,000 K	Black	19-3/4" x 18-5/8" x 18-5/8"	40°	6.5 ft
ASD-SPFLHV-1000D50-PRM	1000W	277-480 V	0-10 V	132,230 lm	5,000 K	Black	19-3/4" x 18-5/8" x 18-5/8"	40°	6.5 ft

## ORDERING INFORMATION

Model	UPC	Pcs. per carton	Carton size	Carton weight
ASD-SPFL-300D50-PRM	819201024674	1	17.7" x 17.7" x 14.0"	34.8 lb
ASD-SPFL-500D50-PRM	819201024681	1	17.7" x 17.7" x 14.0"	36.4 lb
ASD-SPFL2-750D50-PRM	810050735186	1	24.4" x 22.4" x 16.3"	64.8 lb
ASD-SPFL2-1000D50-PRM	810050735179	1	24.4" x 22.4" x 16.3"	64.8 lb
<b>SPFLHV HIGH VOLTAGE</b>				
ASD-SPFLHV-300D50-PRM	819201026272	1	17.7" x 17.7" x 14.0"	35.1 lb
ASD-SPFLHV-500D50-PRM	819201025749	1	17.7" x 17.7" x 14.0"	36.4 lb
ASD-SPFLHV-750D50-PRM	819201026289	1	24.4" x 22.4" x 16.3"	66.2 lb
ASD-SPFLHV-1000D50-PRM	810050737340	1	24.4" x 22.4" x 16.3"	66.2 lb

## ACCESSORIES:

Model	Name	UPC	Pcs. per carton	Carton size	Carton weight	GTIN 14
ASD-SF-SPFL-300/500	Slip fitter with straight arm bracket for 300-500W	819201026418	5	19.9" x 15.9" x 12.4	42.5 lb	10819201026415
ASD-SF-SPFL2	Slip fitter with straight arm bracket for 750-1000W	819201026500	4	23.8" x 15.7" x 17.9	68.3 lb	10819201026507
ASD-LS-SPFL	Laser pointer	819201026432	10	12.2" x 12.2" x 7.5"	12.8 lb	10819201026439
ASD-L30-SPFL-300/500	30° Lens for 300-500W	819201024704	20	12.2" x 12.2" x 8.46"	11.02 lb	10819201024701
ASD-L15-SPFL-600/1250	15° Lens for 600-1250W	819201024711	20	12.2" x 12.2" x 8.46"	12.35 lb	10819201024718

For most up-to-date spec sheets please refer to [asd-lighting.com](http://asd-lighting.com)

**ASD LIGHTING CORP**

E-mail: [orders@asd-lighting.com](mailto:orders@asd-lighting.com) | Web site: [www.asd-lighting.com](http://www.asd-lighting.com)





# LED SPORT LIGHT


## PRODUCT SPECIFICATIONS:

Construction & Materials						
Housing	Aluminum					
Lens	PC					
Visor	SPCC					
Finish	Black/Red					
Weight	ASD-SPFL-300D50-PRM	29.6 lb (13.4 kg)	ASD-SPFL2-1000D50-PRM	54.5 lb (24.7 kg)	ASD-SPFLHV-750D50-PRM	55.9 lb (25.3 kg)
	ASD-SPFL-500D50-PRM	31.3 lb (14.2 kg)	ASD-SPFLHV-300D50-PRM	29.9 lb (13.6 kg)	ASD-SPFLHV-1000D50-PRM	
	ASD-SPFL2-750D50-PRM	54.5 lb (24.7 kg)	ASD-SPFLHV-500D50-PRM	31.3 lb (14.2 kg)		
Environmental system						
Work environment	Suitable for Wet Locations, IP66					
Operating temperature	-40°F to 122°F (-40°C to 50°C)					
L-70 Life	R > 54,000 hrs; C > 145,000 hrs					
Optical system						
Luminous flux	ASD-SPFL-300D50-PRM	40,483 lm	ASD-SPFL2-1000D50-PRM	132,304 lm	ASD-SPFLHV-750D50-PRM	98,669 lm
	ASD-SPFL-500D50-PRM	66,286 lm	ASD-SPFLHV-300D50-PRM	40,507 lm	ASD-SPFLHV-1000D50-PRM	132,230 lm
	ASD-SPFL2-750D50-PRM	98,712 lm	ASD-SPFLHV-500D50-PRM	66,352 lm		
Color temperature	5,000 K					
CRI	ASD-SPFL-300D50-PRM	> 80	ASD-SPFL2-1000D50-PRM	> 80	ASD-SPFLHV-750D50-PRM	> 70
	ASD-SPFL-500D50-PRM		ASD-SPFLHV-300D50-PRM		ASD-SPFLHV-1000D50-PRM	
	ASD-SPFL2-750D50-PRM		ASD-SPFLHV-500D50-PRM			
Electrical system						
Input voltage	Regular voltage: 120-277 V		High voltage: 277-480 V			
Max input current	ASD-SPFL-300D50-PRM	2.5 A	ASD-SPFL2-1000D50-PRM	8.3 A	ASD-SPFLHV-750D50-PRM	2.7 A
	ASD-SPFL-500D50-PRM	4.2 A	ASD-SPFLHV-300D50-PRM	1.1 A	ASD-SPFLHV-1000D50-PRM	3.6 A
	ASD-SPFL2-750D50-PRM	6.25 A	ASD-SPFLHV-500D50-PRM	1.8 A		
Inrush current (Action time)	ASD-SPFL-300D50-PRM	70 A (1 S)	ASD-SPFL2-1000D50-PRM	120 A (0.6 S)	ASD-SPFLHV-750D50-PRM	50 A (0.53 S)
	ASD-SPFL-500D50-PRM	75 A (0.57 S)	ASD-SPFLHV-300D50-PRM	50 A (0.85 S)	ASD-SPFLHV-1000D50-PRM	
	ASD-SPFL2-750D50-PRM	120 A (0.6 S)	ASD-SPFLHV-500D50-PRM	50 A (0.53 S)		
Off state power	0W					
Power consumption	ASD-SPFL-300D50-PRM	300W	ASD-SPFL2-1000D50-PRM	1000W	ASD-SPFLHV-750D50-PRM	750W
	ASD-SPFL-500D50-PRM	500W	ASD-SPFLHV-300D50-PRM	300W	ASD-SPFLHV-1000D50-PRM	1000W
	ASD-SPFL2-750D50-PRM	750W	ASD-SPFLHV-500D50-PRM	500W		
Power factor	> 0.9					
Output voltage	SPFL: 48 V		SPFL2: 64 V			
Max output current	ASD-SPFL-300D50-PRM	6.0 A	ASD-SPFL2-1000D50-PRM	14.7 A	ASD-SPFLHV-750D50-PRM	14.5 A
	ASD-SPFL-500D50-PRM	9.7 A	ASD-SPFLHV-300D50-PRM	5.9 A	ASD-SPFLHV-1000D50-PRM	19.27 A
	ASD-SPFL2-750D50-PRM	11 A	ASD-SPFLHV-500D50-PRM	9.7 A		
Surge protection DM/CM	10 kV / 10 kV					
Dimming compatible controls			Effective projected area (EPA)			
Brand	Leviton	Lutron	Standard bracket	300-500W	1.371ft²	
	ZS057-D0Z	MS-Z101		600-1250W	2.021 ft²	
Models	DD710	DVSTV				
	DS710	NTSTV				
	IP710	DVTV				
Regular and voluntary certifications						
Warranty 7-years for operating less than 19Hrs per day, with ambient temperature <40°						
DesignLights Consortium (DLC) listed (Classification: Premium)						
Main: Outdoor Luminaires; General Application: Very High Output;						
Primary Use: Outdoor Pole/Arm-Mounted Area and Roadway Luminaires						
UL listed E473804						

PACKAGE CONTENTS:

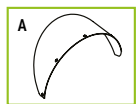
Description	Q-ty
LED Sport Light Fixture	1
Visor (A)	1
Box	1

A



## PACKAGE CONTENTS:

Description	Q-ty
LED Sport Light Fixture	1
Visor (A)	1
Box	1



For most up-to-date spec sheets please refer to [asd-lighting.com](http://asd-lighting.com)

ASD LIGHTING CORP

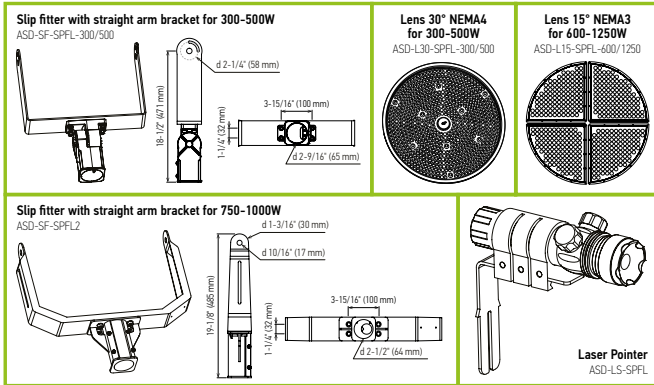
E-mail: [orders@asd-lighting.com](mailto:orders@asd-lighting.com) | Web site: [www.asd-lighting.com](http://www.asd-lighting.com)





# LED SPORT LIGHT

## ACCESSORIES (sold separately):



## ACCESSORY COMPATIBILITY LIST:

Accessories	Slip-fitter with straight arm bracket for 300-500W ASD-SF1-SPFL10	Slip-fitter with straight arm bracket for 750-1000W ASD-SF-SPFL2	Laser pointer ASD-LS-SPFL	30° Lens for 300-500W ASD-L30-SPFL-300/500	15° Lens for 600-1250W ASD-L15-SPFL-600/1250
Models					
ASD-SPFL-300D50-PRM	•		•	•	
ASD-SPFL-500D50-PRM	•		•	•	
ASD-SPFL2-750D50-PRM		•	•		•
ASD-SPFL2-1000D50-PRM		•	•		•
ASD-SPFLHV-300D50-PRM	•		•	•	
ASD-SPFLHV-500D50-PRM	•		•	•	
ASD-SPFLHV-750D50-PRM		•	•		•
ASD-SPFLHV-1000D50-PRM		•	•		•

## INSTALLATION GUIDE

### IMPORTANT SAFETY INFORMATION:

Please read all the instructions below before installation.

- Make sure that the supply voltage corresponds to the rated product voltage.
- The product must be installed by a qualified electrician in accordance with the National Electrical Code and corresponding local codes.
- If the product is damaged, do not use it.

### WARNING

**RISK OF PERSONAL INJURY – READ and follow all WARNINGS and installation instructions.** Keep or give to the owner for future reference.

**Risk of cuts:** Wear gloves to prevent cuts or abrasions when removing from carton, handling, installing, and maintaining this product.

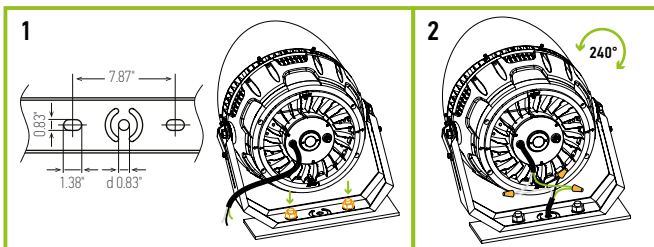
**Risk of electric shock:** This product must be installed in accordance with the applicable installation code by a person familiar with the construction and operation of the product and the hazards involved.

**Risk of Fire:** Minimum 194°F supply conductors. Consult a qualified electrician to ensure correct branch circuit conductor.

ASD® assumes no responsibility for claims arising out of improper or careless installation or handling of this product.

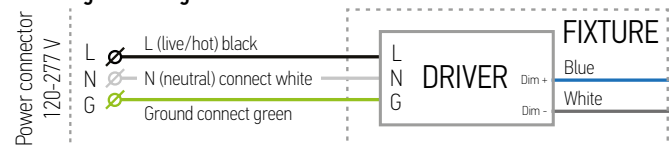
### INSTALLATION STEPS:

- Figure 1 shows the bolt pattern of the mount. Secure the fixture using the 2 mounting holes.
- Pull the wire through the center hole to complete the wiring. Make sure that your connection is watertight.

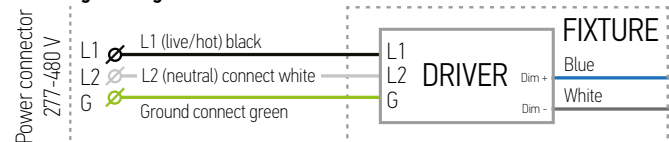


## ELECTRICAL SCHEMATIC DIAGRAM:

### SPFL regular voltage



### SPFL high voltage

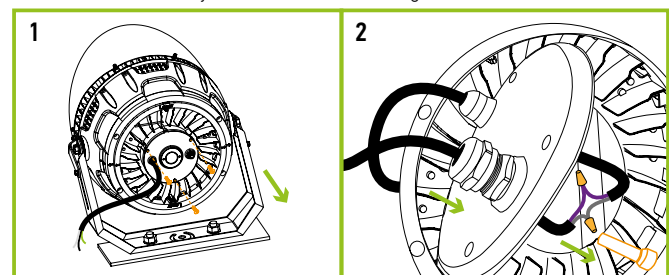


\* The regular voltage 120-277V fixtures can be alternatively powered without neutral by two-phase circuit with phase-to-phase voltage of 208V (L1-120V & L2-120V).

**WARNING:** Phase-to-phase voltage should be less than 277V (160V per each phase) and more than 120V (70V per each phase)! Do not confuse Regular Voltage fixtures of 120-277V with High Voltage ones of 277-480V!

## DIMMING WIRE CONNECTION:

- Using a screw driver remove the circular plate on the back of the fixture.
- Connect the dimming wires and bring them through the back plate. Reattach cover and tighten the bolts. If the cover is installed incorrectly the warranty will be voided. Make sure that your connection is watertight.



For most up-to-date spec sheets please refer to [asd-lighting.com](http://asd-lighting.com)

ASD LIGHTING CORP

E-mail: [orders@asd-lighting.com](mailto:orders@asd-lighting.com) | Web site: [www.asd-lighting.com](http://www.asd-lighting.com)



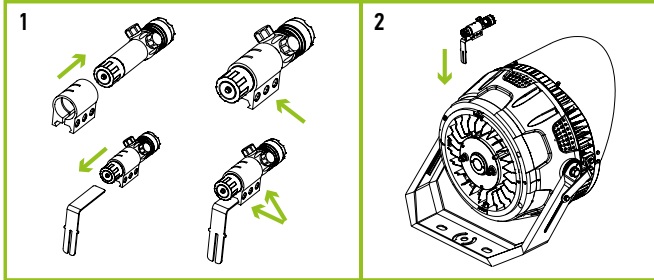


# LED SPORT LIGHT

## LASER POINTER INSTALLATION

**ASD-LS-SPFL** sold separately:

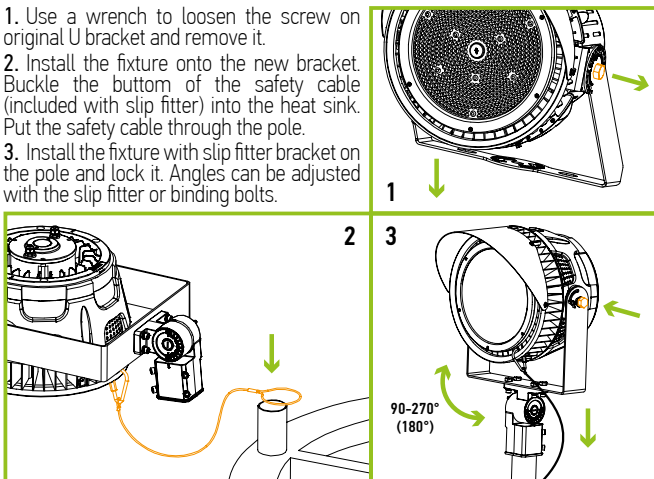
1. Attach the laser pointer to the holder. Loosen the hex screws. Slide the holder over the L bracket. Tighten the hex screws.
2. Find the mounting hole marked "Laser" on the lighting fixture. Attach.



## SLIP-FITTER 300-500W INSTALLATION

**ASD-SF-SPFL-300/500** sold separately:

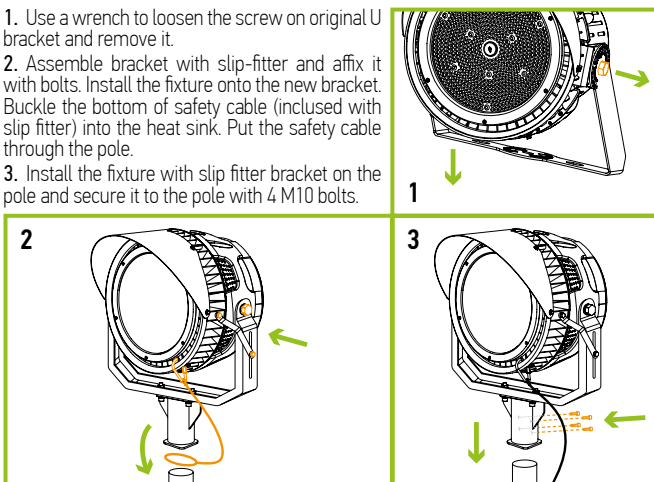
1. Use a wrench to loosen the screw on original U bracket and remove it.
2. Install the fixture onto the new bracket. Buckle the bottom of the safety cable (included with slip fitter) into the heat sink. Put the safety cable through the pole.
3. Install the fixture with slip fitter bracket on the pole and lock it. Angles can be adjusted with the slip fitter or binding bolts.



## SLIP-FITTER 750-1000W INSTALLATION

**ASD-SF-SPFL2** sold separately:

1. Use a wrench to loosen the screw on original U bracket and remove it.
2. Assemble bracket with slip-fitter and affix it with bolts. Install the fixture onto the new bracket. Buckle the bottom of safety cable (included with slip fitter) into the heat sink. Put the safety cable through the pole.
3. Install the fixture with slip fitter bracket on the pole and secure it to the pole with 4 M10 bolts.

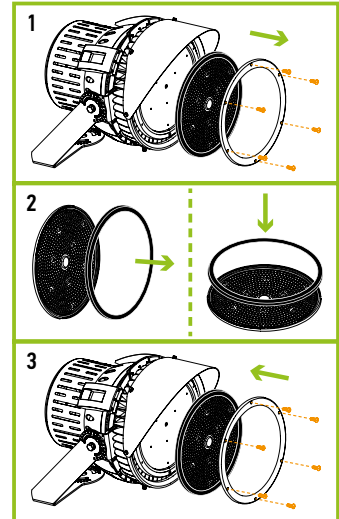
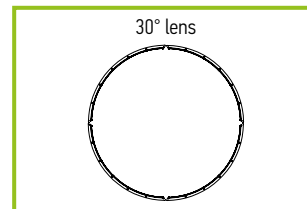


## LENS INSTALLATION FOR 300-500W

**ASD-L30-SPFL-300/500** sold separately:

1. Remove the 6 screws that hold the face ring and the lens to the fixture.
2. Remove the waterproof ring from the original lens and attach it to the new lens.
3. Reattach the new lens, waterproof ring, and face ring to the fixture with 6 screws.

Power	300W	500W
30°	1 pcs 30° lens	
45°	Default	
80°	1 pcs 80° lens	

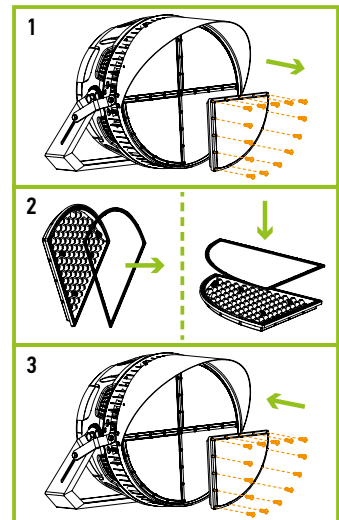
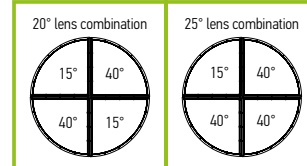


## LENS INSTALLATION FOR 750-1000W

**ASD-L15-SPFL-600/1250** sold separately:

1. Remove the 14 screws that hold each face ring and lens to the fixture (56 screws total).
2. Remove the waterproof ring from the original lens and attach it to the new lens.
3. Reattach the new lens, waterproof ring, and face ring to the fixture with 14 screws (56 screws total).

Power	750W	1000W
15°	4 pcs 15° lens	
20°	2 pcs 15° lens + 2 pcs 40° lens	
25°	1 pcs 15° lens + 3 pcs 40° lens	
40°	Default	



For most up-to-date spec sheets please refer to [asd-lighting.com](http://asd-lighting.com)

**ASD LIGHTING CORP**

E-mail: [orders@asd-lighting.com](mailto:orders@asd-lighting.com) | Web site: [www.asd-lighting.com](http://www.asd-lighting.com)

