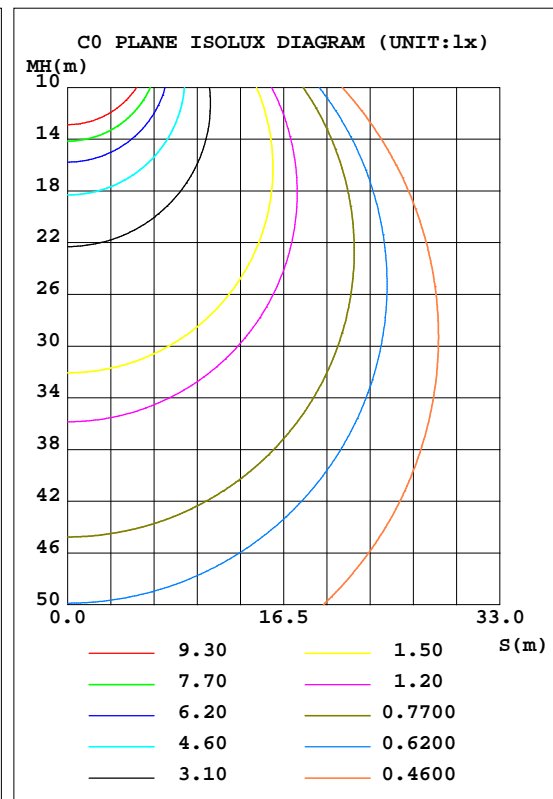
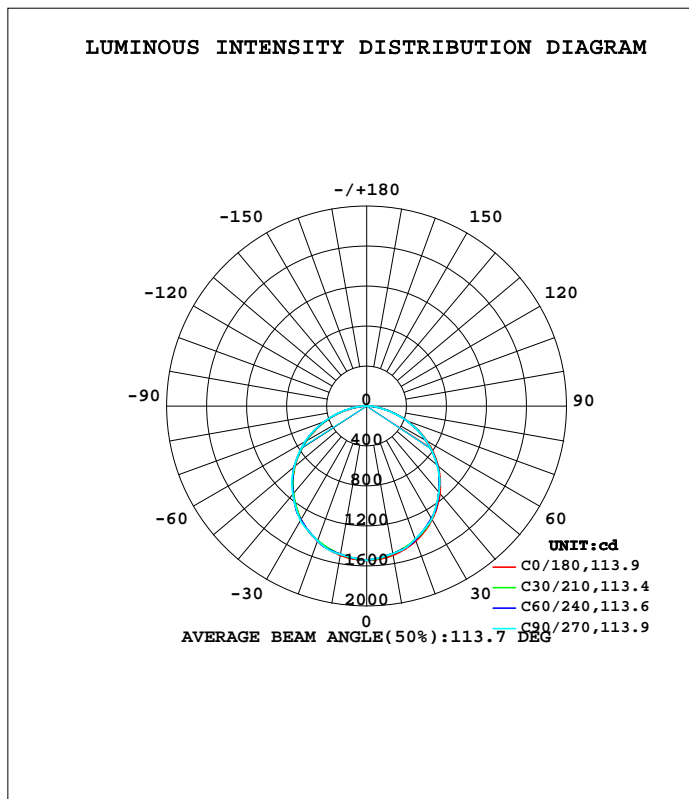


LUMINAIRE PHOTOMETRIC TEST REPORT

Test:U:120.08V I:0.3331A P:40W PF:0.9925 Lamp Flux:4600x1 lm		
NAME: ASD-ELP12-24D4040-SHE	TYPE:LED PANEL	WEIGHT:
SPEC.:	DIM.: 2x4	SERIAL No.:BLD20170927P02
MFR.: ASD Lighting corp	SUR.:0.555*1.175	Shielding Angle:

DATA OF LAMP		PHOTOMETRIC DATA Eff: 115 lm/W			
MODEL ASD-ELP12-24D4040-SHE		I _{max} (cd)	1543	S/MH(C0/180)	1.27
NOMINAL POWER(W)	40	LOR(%)	100.0	S/MH(C90/270)	1.27
RATED VOLTAGE(V)		TOTAL FLUX(lm)	4600	η UP, DN(C0-180)	0.0,49.4
NOMINAL FLUX(lm)	4600	CIE CLASS	DIRECT	η UP, DN(C180-360)	0.0,50.5
LAMPS INSIDE	1	η up(%)	0.0	CIBSE SHR NOM	1.25
TEST VOLTAGE(V)		η down(%)	100.0	CIBSE SHR MAX	1.35



C Range: 0 - 360DEG
 C Interval: 5.0DEG
 Test Speed: HIGH
 Temperature:32DEG
 Operators:HUA
 Test Date:2017-09-27

γ Range: 0 - 180DEG
 γ Interval: 0.5DEG
 Test System:EVERFINE GO-2000B_V1 SYSTEM V2.0.350
 Humidity:36%
 Test Distance:12.218m [K=1.0000]
 Remarks:

ZONAL FLUX DIAGRAM

ZONAL FLUX DIAGRAM:

γ	C0	C45	C90	C135	C180	C225	C270	C315	γ	Φ zone	Φ total	%lum,lamp
5	1535	1524	1521	1524	1536	1527	1525	1527	0- 5	36.64	36.64	0.82,0.82
10	1516	1498	1499	1499	1517	1505	1508	1504	5- 10	108.4	145.0	3.26,3.26
15	1483	1467	1474	1467	1483	1476	1486	1476	10- 15	176.7	321.7	7.23,7.23
20	1437	1429	1420	1428	1438	1441	1435	1440	15- 20	239.4	561.2	12.6,12.6
25	1379	1366	1362	1366	1381	1379	1381	1379	20- 25	293.7	854.8	19.2,19.2
30	1311	1293	1305	1293	1313	1308	1326	1308	25- 30	338.7	1194	26.8,26.8
35	1231	1216	1215	1217	1233	1234	1238	1233	30- 35	372.9	1566	35.2,35.2
40	1141	1133	1125	1134	1144	1152	1150	1150	35- 40	394.1	1961	44.1,44.1
45	1041	1027	1033	1027	1044	1046	1059	1045	40- 45	402.7	2363	53.1,53.1
50	933.4	919.6	918.8	919.1	936.7	939.3	946.4	938.4	45- 50	398.3	2762	62.1,62.1
55	817.3	809.5	802.1	808.2	820.5	829.2	831.1	828.8	50- 55	379.7	3141	70.6,70.6
60	693.7	681.3	685.5	680.2	696.9	701.2	715.7	700.5	55- 60	348.6	3490	78.5,78.5
65	564.3	553.5	552.2	552.6	568.1	573.4	582.9	572.7	60- 65	305.9	3796	85.3,85.3
70	431.2	423.6	419.1	422.8	433.5	442.9	449.7	442.4	65- 70	252.0	4048	91.91
75	299.6	292.1	286.3	291.3	301.9	309.5	314.9	309.8	70- 75	190.5	4238	95.3,95.3
80	170.2	170.3	168.2	169.6	166.8	184.6	191.2	185.1	75- 80	125.3	4363	98.1,98.1
85	54.04	73.95	72.02	72.83	51.31	80.75	84.17	80.60	80- 85	65.96	4429	99.6,99.6
90	1.017	7.166	8.134	6.398	1.913	6.830	10.56	6.369	85- 90	17.45	4447	100,100
95	0	0	0	0	0	0	0	0	90- 95	0.7466	4448	100,100
100	0	0	0	0	0	0	0	0	95-100	0	4448	100,100
105	0	0	0	0	0	0	0	0	100-105	0	4448	100,100
110	0	0	0	0	0	0	0	0	105-110	0	4448	100,100
115	0	0	0	0	0	0	0	0	110-115	0	4448	100,100
120	0	0	0	0	0	0	0	0	115-120	0	4448	100,100
125	0	0	0	0	0	0	0	0	120-125	0	4448	100,100
130	0	0	0	0	0	0	0	0	125-130	0	4448	100,100
135	0	0	0	0	0	0	0	0	130-135	0	4448	100,100
140	0	0	0	0	0	0	0	0	135-140	0	4448	100,100
145	0	0	0	0	0	0	0	0	140-145	0	4448	100,100
150	0	0	0	0	0	0	0	0	145-150	0	4448	100,100
155	0	0	0	0	0	0	0	0	150-155	0	4448	100,100
160	0	0	0	0	0	0	0	0	155-160	0	4448	100,100
165	0	0	0	0	0	0	0	0	160-165	0	4448	100,100
170	0	0	0	0	0	0	0	0	165-170	0	4448	100,100
175	0	0	0	0	0	0	0	0	170-175	0	4448	100,100
180	0	0	0	0	0	0	0	0	175-180	0	4448	100,100
DEG	LUMINOUS INTENSITY:cd								UNIT:lm			

Conical surface Flux(90deg): 2363.2 lm

%lum = 53.1%
%lamp = 53.1%

Conical surface Flux(120deg): 3489.8 lm

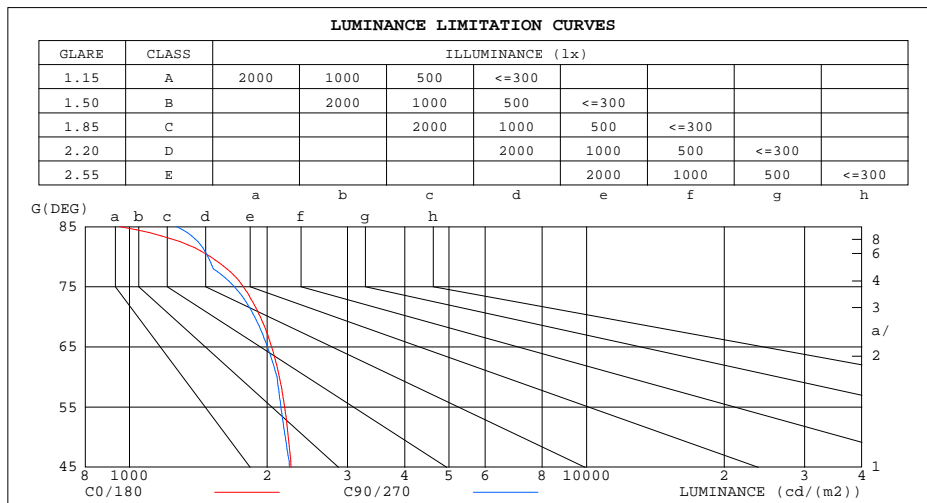
%lum = 78.5%
%lamp = 78.5%

C Range: 0 - 360DEG
C Interval: 5.0DEG
Test Speed: HIGH
Temperature:32DEG
Operators:HUA
Test Date:2017-09-27

γ Range: 0 - 180DEG
γ Interval: 0.5DEG
Test System:EVERFINE GO-2000B_V1 SYSTEM V2.0.350
Humidity:36%
Test Distance:12.218m [K=1.0000]
Remarks:

LUMINANCE LIMITATION CURVES

Test:U:120.08V I:0.3331A P:40W PF:0.9925 Lamp Flux:4600x1 lm		
NAME: ASD-ELP12-24D4040-SHE	TYPE:LED PANEL	WEIGHT:
SPEC.:	DIM.: 2x4	SERIAL No.:BLD20170927P02
MFR.: ASD Lighting corp	SUR.:0.555*1.175	Shielding Angle:



LUMINANCE cd/(m2)		
G(DEG)	C0/180	C90/270
85	951	1267
80	1504	1486
75	1775	1697
70	1934	1879
65	2048	2004
60	2128	2103
55	2186	2145
50	2227	2192
45	2259	2240

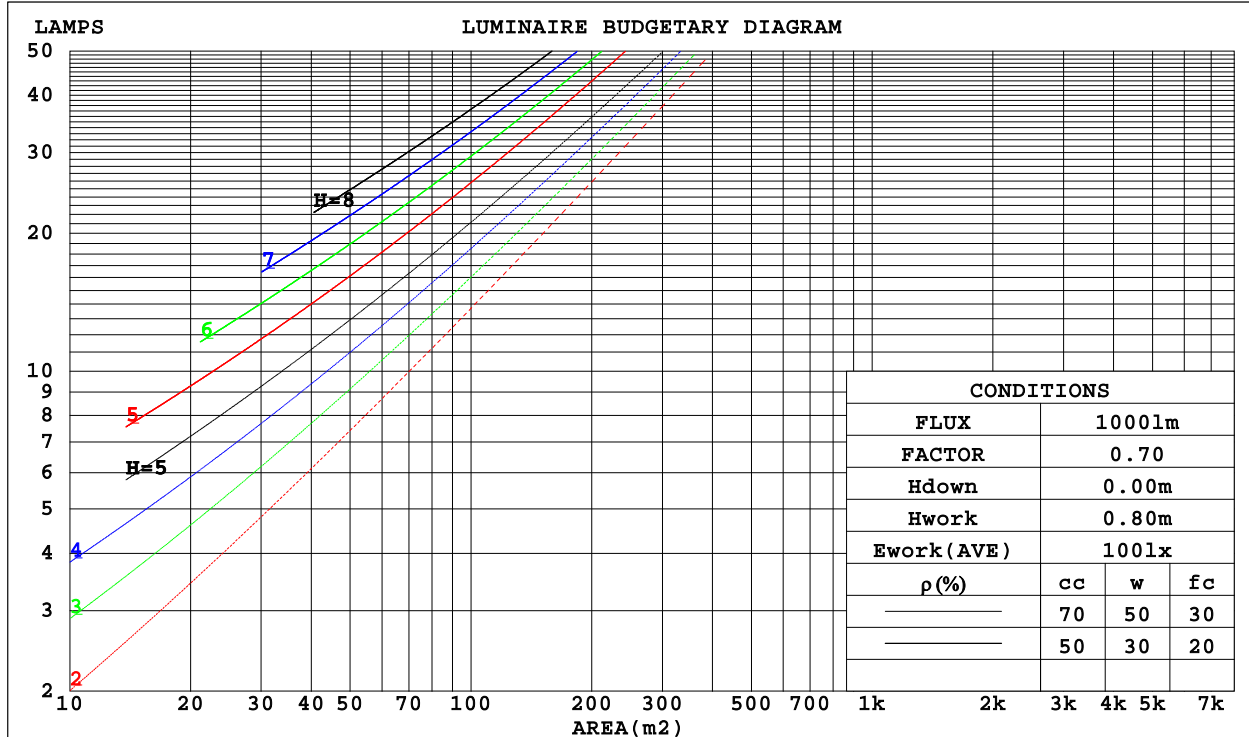
C Range: 0 - 360DEG
 C Interval: 5.0DEG
 Test Speed: HIGH
 Temperature:32DEG
 Operators:HUA
 Test Date:2017-09-27

γ Range: 0 - 180DEG
 γ Interval: 0.5DEG
 Test System:EVERFINE GO-2000B_V1 SYSTEM V2.0.350
 Humidity:36%
 Test Distance:12.218m [K=1.0000]
 Remarks:

CU AND LUMINAIRE BUDGETARY ESTIMATE DIAGRAM

Test:U:120.08V I:0.3331A P:40W PF:0.9925 Lamp Flux:4600x1 lm		
NAME: ASD-ELP12-24D4040-SHE	TYPE:LED PANEL	WEIGHT:
SPEC.:	DIM.: 2x4	SERIAL No.:BLD20170927P02
MFR.: ASD Lighting corp	SUR.:0.555*1.175	Shielding Angle:

ρ_{cc}	80%			70%			50%			30%			10%			0
ρ_w	50%	30%	10%	50%	30%	10%	50%	30%	10%	50%	30%	10%	50%	30%	10%	0
ρ_{fc}	20%			20%			20%			20%			20%			0
RCR	RCR:Room Cavity Ratio						Coefficients of Utilization(CU)									
0.0	1.19	1.19	1.19	1.16	1.16	1.16	1.11	1.11	1.11	1.06	1.06	1.06	1.02	1.02	1.02	.00
1.0	1.04	.99	.96	1.02	.98	.94	.97	.94	.91	.93	.91	.88	.90	.88	.86	.83
2.0	.90	.83	.78	.88	.82	.77	.85	.79	.75	.82	.77	.73	.78	.75	.71	.69
3.0	.79	.71	.64	.78	.70	.64	.75	.68	.63	.72	.66	.61	.69	.64	.60	.58
4.0	.70	.61	.54	.69	.60	.54	.66	.59	.53	.64	.58	.52	.62	.56	.52	.50
5.0	.62	.53	.47	.61	.53	.46	.59	.52	.46	.57	.51	.45	.55	.50	.45	.43
6.0	.56	.47	.41	.55	.47	.40	.53	.46	.40	.52	.45	.40	.50	.44	.39	.37
7.0	.51	.42	.36	.50	.42	.36	.49	.41	.35	.47	.40	.35	.46	.40	.35	.33
8.0	.46	.38	.32	.46	.38	.32	.44	.37	.32	.43	.36	.31	.42	.36	.31	.29
9.0	.43	.34	.29	.42	.34	.29	.41	.34	.28	.40	.33	.28	.39	.33	.28	.26
10.0	.39	.31	.26	.39	.31	.26	.38	.31	.26	.37	.30	.26	.36	.30	.26	.24



C Range: 0 - 360DEG
 C Interval: 5.0DEG
 Test Speed: HIGH
 Temperature:32DEG
 Operators:HUA
 Test Date:2017-09-27

γ Range: 0 - 180DEG
 γ Interval: 0.5DEG
 Test System:EVERFINE GO-2000B_V1 SYSTEM V2.0.350
 Humidity:36%
 Test Distance:12.218m [K=1.0000]
 Remarks:

WEC AND CCEC

Test:U:120.08V I:0.3331A P:40W PF:0.9925 Lamp Flux:4600x1 lm		
NAME: ASD-ELP12-24D4040-SHE	TYPE:LED PANEL	WEIGHT:
SPEC.:	DIM.: 2x4	SERIAL No.:BLD20170927P02
MFR.: ASD Lighting corp	SUR.:0.555*1.175	Shielding Angle:

pcc	80%			70%			50%			30%			10%			0
pw	50%	30%	10%	50%	30%	10%	50%	30%	10%	50%	30%	10%	50%	30%	10%	0
pfc	20%			20%			20%			20%			20%			0
RCR	RCR:Room Cavity Ratio						Wall Exitance Coefficients(WEC)									
0.0																
1.0	.311	.177	.056	.304	.173	.055	.291	.167	.053	.279	.161	.052	.267	.155	.050	
2.0	.293	.161	.049	.287	.158	.049	.275	.153	.048	.264	.148	.046	.254	.144	.045	
3.0	.271	.144	.043	.266	.142	.043	.255	.138	.042	.246	.135	.041	.237	.131	.041	
4.0	.250	.130	.038	.245	.128	.038	.236	.125	.037	.228	.122	.037	.220	.119	.036	
5.0	.231	.118	.034	.227	.117	.034	.219	.114	.034	.211	.111	.033	.204	.109	.033	
6.0	.214	.108	.031	.211	.106	.031	.203	.104	.030	.197	.102	.030	.190	.100	.030	
7.0	.200	.099	.028	.196	.098	.028	.190	.096	.028	.184	.094	.027	.178	.092	.027	
8.0	.186	.091	.026	.183	.090	.026	.177	.089	.025	.172	.087	.025	.167	.086	.025	
9.0	.175	.084	.024	.172	.084	.024	.167	.082	.023	.162	.081	.023	.157	.080	.023	
10.0	.164	.079	.022	.162	.078	.022	.157	.077	.022	.152	.076	.022	.148	.075	.021	

pcc	80%			70%			50%			30%			10%			0
pw	50%	30%	10%	50%	30%	10%	50%	30%	10%	50%	30%	10%	50%	30%	10%	0
pfc	20%			20%			20%			20%			20%			0
RCR	RCR:Room Cavity Ratio						Ceiling Cavity Exitance Coefficients(CCEC)									
0.0	.191	.191	.191	.163	.163	.163	.111	.111	.111	.064	.064	.064	.020	.020	.020	
1.0	.181	.156	.134	.154	.134	.116	.106	.092	.080	.061	.053	.047	.019	.017	.015	
2.0	.173	.132	.098	.148	.114	.085	.101	.079	.059	.058	.046	.035	.019	.015	.011	
3.0	.165	.114	.074	.141	.099	.064	.097	.069	.045	.056	.040	.027	.018	.013	.009	
4.0	.157	.101	.058	.135	.087	.051	.093	.061	.036	.054	.036	.021	.017	.012	.007	
5.0	.150	.091	.047	.129	.079	.041	.089	.055	.029	.051	.032	.017	.017	.011	.006	
6.0	.143	.082	.039	.123	.071	.034	.085	.050	.024	.049	.029	.014	.016	.010	.005	
7.0	.136	.076	.033	.117	.065	.029	.081	.046	.021	.047	.027	.012	.015	.009	.004	
8.0	.129	.070	.029	.111	.060	.025	.077	.042	.018	.045	.025	.011	.014	.008	.004	
9.0	.123	.065	.025	.106	.056	.022	.074	.040	.016	.043	.023	.009	.014	.008	.003	
10.0	.118	.060	.023	.101	.053	.020	.070	.037	.014	.041	.022	.008	.013	.007	.003	

C Range: 0 - 360DEG
 C Interval: 5.0DEG
 Test Speed: HIGH
 Temperature:32DEG
 Operators:HUA
 Test Date:2017-09-27

γ Range: 0 - 180DEG
 γ Interval: 0.5DEG
 Test System:EVERFINE GO-2000B_V1 SYSTEM V2.0.350
 Humidity:36%
 Test Distance:12.218m [K=1.0000]
 Remarks:

UGR(Unified Glare Rating) Table

Test:U:120.08V I:0.3331A P:40W PF:0.9925 Lamp Flux:4600x1 lm										
NAME: ASD-ELP12-24D4040-SHE					TYPE:LED PANEL			WEIGHT:		
SPEC.:					DIM.: 2x4			SERIAL No.:BLD20170927P02		
MFR.: ASD Lighting corp					SUR.:0.555*1.175			Shielding Angle:		
ceiling/cavity	0.7	0.7	0.5	0.5	0.3	0.7	0.7	0.5	0.5	0.3
walls	0.5	0.3	0.5	0.3	0.3	0.5	0.3	0.5	0.3	0.3
working plane	0.2	0.2	0.2	0.2	0.2	0.2	0.2	0.2	0.2	0.2
Room dimensions	Viewed crosswise					Viewed endwise				
x = 2H y = 2H	15.6	17.1	15.8	17.3	17.5	15.5	17.1	15.8	17.3	17.5
3H 4H 6H 8H 12H	17.1	18.5	17.4	18.7	19.0	17.0	18.4	17.3	18.7	18.9
	17.6	19.0	18.0	19.2	19.5	17.6	18.9	17.9	19.2	19.4
4H 2H	18.0	19.3	18.3	19.5	19.8	18.0	19.2	18.3	19.5	19.8
3H 4H 6H 8H	18.1	19.3	18.4	19.6	19.9	18.1	19.3	18.4	19.6	19.9
12H	18.1	19.3	18.4	19.6	19.9	18.2	19.3	18.5	19.6	19.9
8H 4H	16.2	17.5	16.5	17.8	18.0	16.1	17.5	16.5	17.7	18.0
6H 8H 12H	17.9	19.0	18.2	19.3	19.6	17.8	19.0	18.2	19.3	19.6
	18.5	19.6	18.9	19.9	20.3	18.5	19.6	18.9	19.9	20.2
12H 4H	19.0	19.9	19.4	20.3	20.7	19.0	19.9	19.4	20.3	20.7
6H	19.1	20.0	19.5	20.4	20.8	19.2	20.1	19.6	20.4	20.8
8H	19.2	20.0	19.6	20.4	20.8	19.3	20.1	19.7	20.5	20.9
	18.8	19.7	19.2	20.1	20.4	18.8	19.7	19.2	20.0	20.4
	19.4	20.1	19.8	20.5	21.0	19.4	20.1	19.8	20.5	21.0
	19.6	20.2	20.0	20.7	21.1	19.6	20.3	20.1	20.7	21.2
	19.7	20.3	20.2	20.7	21.2	19.8	20.4	20.3	20.9	21.3
	18.8	19.6	19.2	20.0	20.4	18.8	19.6	19.2	20.0	20.4
	19.4	20.1	19.9	20.5	21.0	19.4	20.1	19.9	20.5	21.0
	19.7	20.2	20.2	20.7	21.2	19.7	20.3	20.2	20.7	21.2
Variations with the observer position at spacings:										
S = 1.0H	+ 0.1 / - 0.2					+ 0.2 / - 0.2				
1.5H	+ 0.1 / - 0.3					+ 0.2 / - 0.3				
2.0H	+ 0.2 / - 0.3					+ 0.2 / - 0.3				

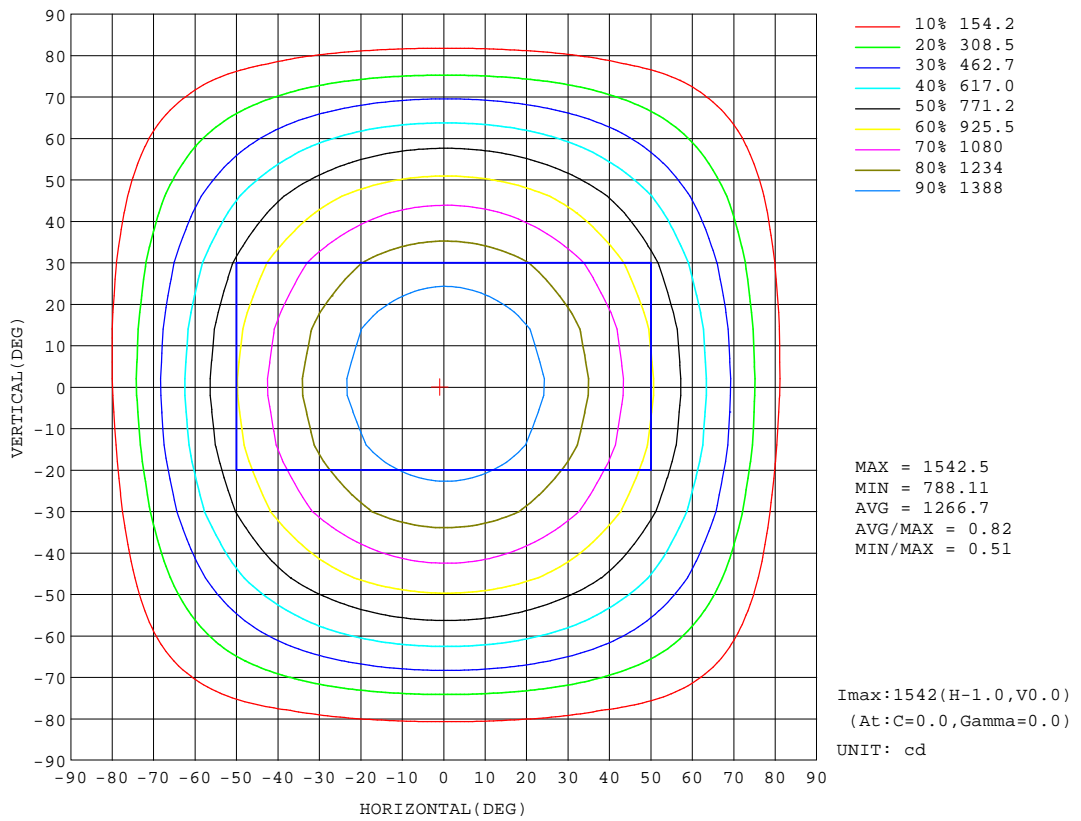
CIE Pub.117 Corrected 4448 lm Total Lamp Luminous Flux.(8log(F/F0) = 5.2)

C Range: 0 - 360DEG
C Interval: 5.0DEG
Test Speed: HIGH
Temperature:32DEG
Operators:HUA
Test Date:2017-09-27

γ Range: 0 - 180DEG
 γ Interval: 0.5DEG
Test System:EVERFINE GO-2000B_V1 SYSTEM V2.0.350
Humidity:36%
Test Distance:12.218m [K=1.0000]
Remarks:

ISOCANDELA DIAGRAM

Test:U:120.08V I:0.3331A P:40W PF:0.9925 Lamp Flux:4600x1 lm		
NAME: ASD-ELP12-24D4040-SHE	TYPE:LED PANEL	WEIGHT:
SPEC.:	DIM.: 2x4	SERIAL No.:BLD20170927P02
MFR.: ASD Lighting corp	SUR.:0.555*1.175	Shielding Angle:



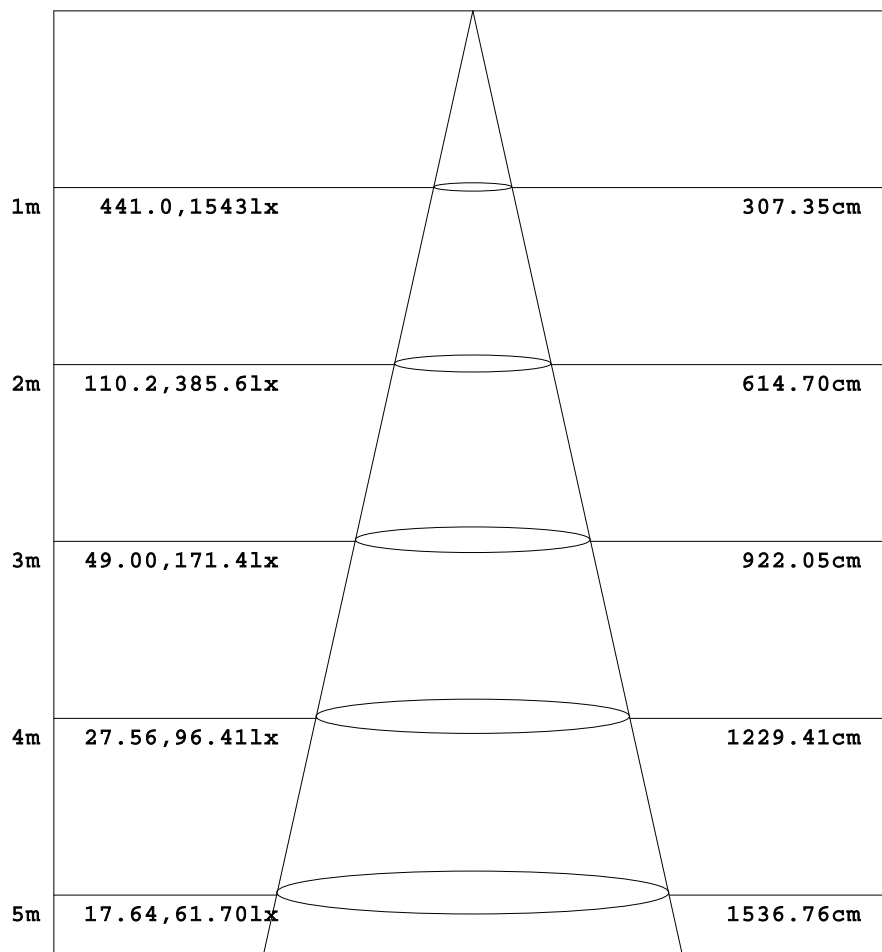
C Range: 0 - 360DEG
 C Interval: 5.0DEG
 Test Speed: HIGH
 Temperature:32DEG
 Operators:HUA
 Test Date:2017-09-27

γ Range: 0 - 180DEG
 γ Interval: 0.5DEG
 Test System:EVERFINE GO-2000B_V1 SYSTEM V2.0.350
 Humidity:36%
 Test Distance:12.218m [K=1.0000]
 Remarks:

AAI Figure

Test:U:120.08V I:0.3331A P:40W PF:0.9925 Lamp Flux:4600x1 lm		
NAME: ASD-ELP12-24D4040-SHE	TYPE:LED PANEL	WEIGHT:
SPEC.:	DIM.: 2x4	SERIAL No.:BLD20170927P02
MFR.: ASD Lighting corp	SUR.:0.555*1.175	Shielding Angle:

Flux out:3285 lm



Height Eavg, Emax Angle:113.89deg Diameter

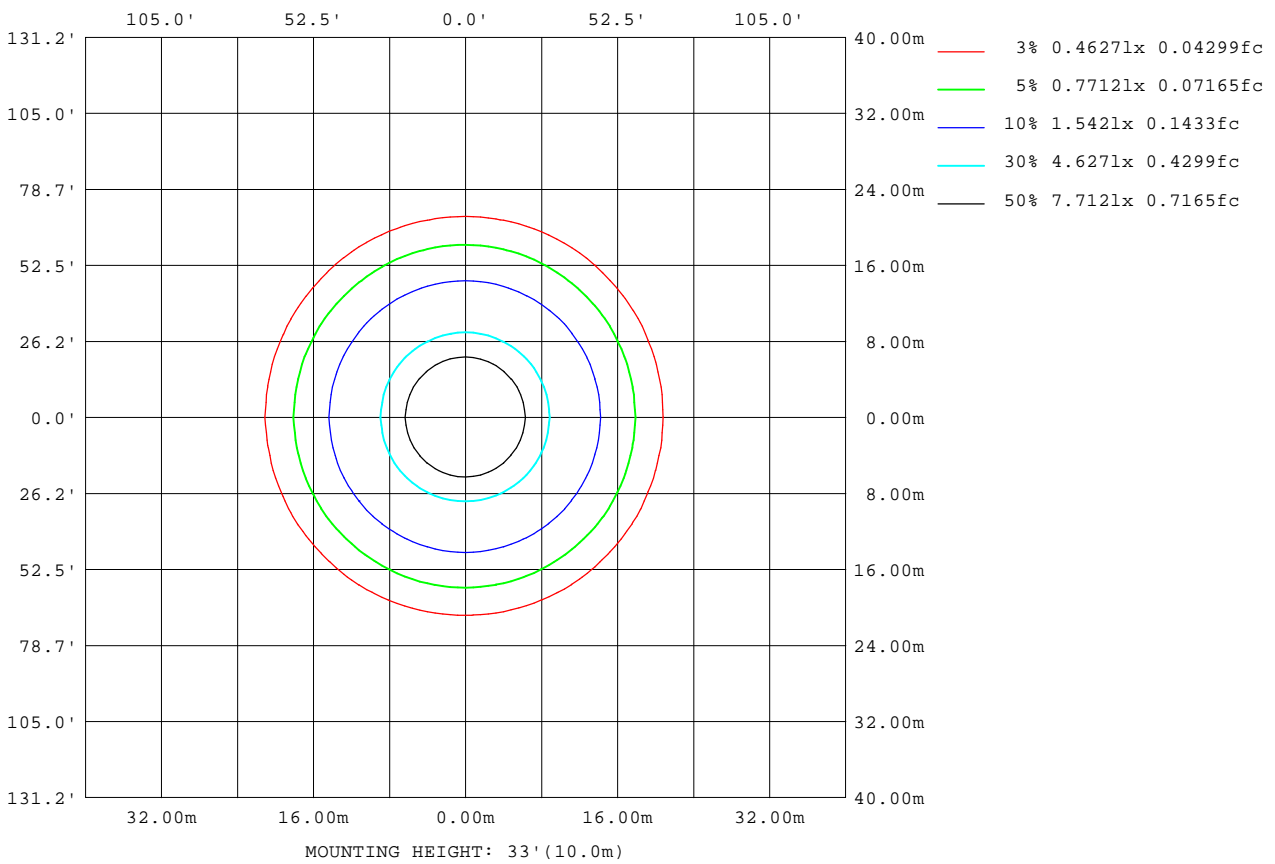
Note:The Curves indicate the illuminated area and the average illumination when the luminaire is at different distance.

C Range: 0 - 360DEG
 C Interval: 5.0DEG
 Test Speed: HIGH
 Temperature:32DEG
 Operators:HUA
 Test Date:2017-09-27

γ Range: 0 - 180DEG
 γ Interval: 0.5DEG
 Test System:EVERFINE GO-2000B_V1 SYSTEM V2.0.350
 Humidity:36%
 Test Distance:12.218m [K=1.0000]
 Remarks:

ISOLUX DIAGRAM

Test:U:120.08V I:0.3331A P:40W PF:0.9925 Lamp Flux:4600x1 lm		
NAME: ASD-ELP12-24D4040-SHE	TYPE:LED PANEL	WEIGHT:
SPEC.:	DIM.: 2x4	SERIAL No.:BLD20170927P02
MFR.: ASD Lighting corp	SUR.:0.555*1.175	Shielding Angle:



C Range: 0 - 360DEG
 C Interval: 5.0DEG
 Test Speed: HIGH
 Temperature:32DEG
 Operators:HUA
 Test Date:2017-09-27

γ Range: 0 - 180DEG
 γ Interval: 0.5DEG
 Test System:EVERFINE GO-2000B_V1 SYSTEM V2.0.350
 Humidity:36%
 Test Distance:12.218m [K=1.0000]
 Remarks:

LED Avg.L Report

Test:U:120.08V I:0.3331A P:40W PF:0.9925 Lamp Flux:4600x1 lm		
NAME: ASD-ELP12-24D4040-SHE	TYPE:LED PANEL	WEIGHT:
SPEC.:	DIM.: 2x4	SERIAL No.:BLD20170927P02
MFR.: ASD Lighting corp	SUR.:0.555*1.175	Shielding Angle:

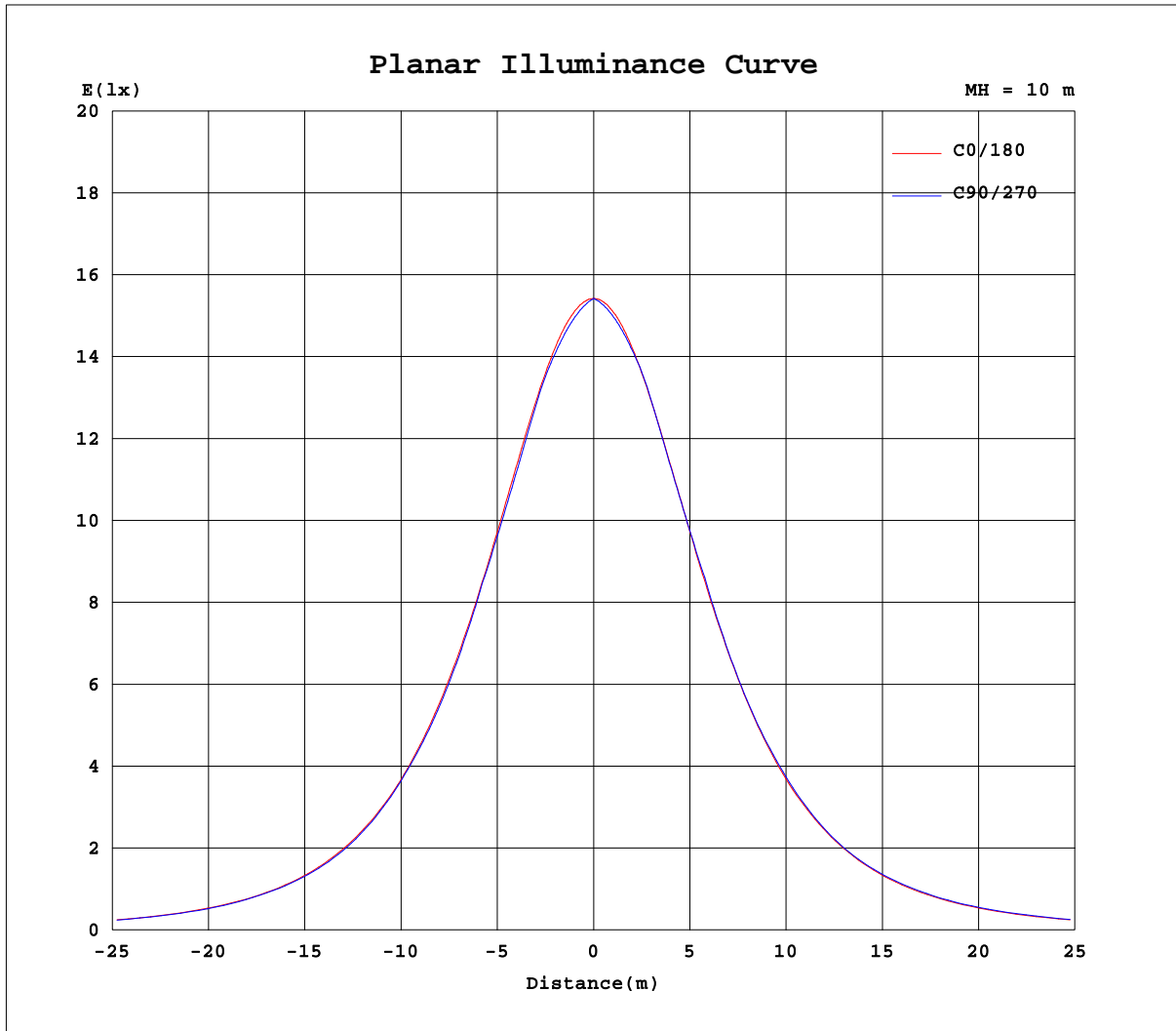
AvgL	cd/m2
L_0~180(65)av	2055
L_0~180(75)av	1782
L_0~180(85)av	927
L_90~270(65)av	2060
L_90~270(75)av	1782
L_90~270(85)av	1374
L_45(65)av	2043
L_45(75)av	1782
L_45(85)av	1356

Standard: GB/T 29293-2012

C Range: 0 - 360DEG
C Interval: 5.0DEG
Test Speed: HIGH
Temperature:32DEG
Operators:HUA
Test Date:2017-09-27

γ Range: 0 - 180DEG
 γ Interval: 0.5DEG
Test System:EVERFINE GO-2000B_V1 SYSTEM V2.0.350
Humidity:36%
Test Distance:12.218m [K=1.0000]
Remarks:

Planar Illuminance Curve



C Range: 0 - 360DEG
 C Interval: 5.0DEG
 Test Speed: HIGH
 Temperature: 32DEG
 Operators: HUA
 Test Date: 2017-09-27

γ Range: 0 - 180DEG
 γ Interval: 0.5DEG
 Test System: EVERFINE GO-2000B_V1 SYSTEM V2.0.350
 Humidity: 36%
 Test Distance: 12.218m [K=1.0000]
 Remarks:

LUMINOUS DISTRIBUTION INTENSITY DATA

Test:U:120.08V I:0.3331A P:40W PF:0.9925 Lamp Flux:4600x1 lm		
NAME: ASD-ELP12-24D4040-SHE	TYPE:LED PANEL	WEIGHT:
SPEC.:	DIM.: 2x4	SERIAL No.:BLD20170927P02
MFR.: ASD Lighting corp	SUR.:0.555*1.175	Shielding Angle:

Table--1

UNIT: cd

C(DEG) γ (DEG)	0	5	10	15	20	25	30	35	40	45	50	55	60	65	70	75	80	85	90
0	1543	1543	1543	1543	1543	1543	1543	1543	1543	1543	1543	1543	1543	1543	1543	1543	1543	1543	1543
5	1535	1534	1532	1530	1529	1527	1526	1525	1524	1524	1523	1522	1522	1522	1521	1521	1521	1521	1521
10	1516	1512	1509	1506	1504	1502	1501	1500	1499	1498	1498	1498	1498	1498	1499	1499	1499	1499	1499
15	1483	1477	1473	1470	1468	1466	1466	1466	1466	1467	1468	1470	1471	1473	1474	1474	1474	1474	1474
20	1437	1431	1426	1423	1421	1421	1422	1424	1427	1429	1429	1427	1424	1423	1422	1421	1420	1420	1420
25	1379	1372	1367	1364	1364	1366	1369	1371	1369	1366	1363	1362	1361	1361	1361	1361	1362	1362	1362
30	1311	1302	1297	1296	1298	1303	1303	1297	1294	1293	1293	1294	1296	1298	1300	1302	1303	1304	1305
35	1231	1221	1217	1218	1223	1222	1217	1214	1214	1216	1220	1224	1221	1219	1217	1216	1215	1215	1215
40	1141	1131	1128	1131	1135	1127	1125	1126	1131	1133	1129	1126	1124	1124	1124	1125	1125	1125	1125
45	1041	1032	1030	1036	1030	1027	1029	1035	1030	1027	1026	1026	1027	1029	1031	1033	1033	1033	1033
50	933	924	926	926	921	922	926	921	919	920	922	925	926	923	921	920	919	919	919
55	817	808	813	807	807	810	805	804	807	809	807	804	803	802	802	802	802	802	802
60	694	686	689	684	689	683	684	687	684	681	680	680	681	682	683	684	685	685	685
65	564	559	558	560	555	557	558	555	553	553	555	556	555	554	553	553	553	552	552
70	431	429	423	421	422	423	422	424	425	424	423	421	421	420	420	420	419	419	419
75	300	291	283	283	285	288	292	293	293	292	292	291	290	289	288	288	287	287	286
80	170	151	152	156	162	167	170	172	172	170	168	165	166	167	167	168	168	168	168
85	54.0	51.2	56.0	60.9	65.0	66.7	69.9	72.0	73.3	73.9	74.1	73.8	73.6	73.2	72.7	72.4	72.2	72.1	72.0
90	1.02	3.11	3.39	3.87	4.53	5.25	5.87	6.40	6.83	7.17	7.47	7.69	7.80	7.86	7.89	8.00	8.10	8.12	8.13
95	0.00	0.00	0.00	0.00	0.00	0.00	0.00	0.00	0.00	0.00	0.00	0.00	0.00	0.00	0.00	0.00	0.00	0.00	0.00
100	0.00	0.00	0.00	0.00	0.00	0.00	0.00	0.00	0.00	0.00	0.00	0.00	0.00	0.00	0.00	0.00	0.00	0.00	0.00
105	0.00	0.00	0.00	0.00	0.00	0.00	0.00	0.00	0.00	0.00	0.00	0.00	0.00	0.00	0.00	0.00	0.00	0.00	0.00
110	0.00	0.00	0.00	0.00	0.00	0.00	0.00	0.00	0.00	0.00	0.00	0.00	0.00	0.00	0.00	0.00	0.00	0.00	0.00
115	0.00	0.00	0.00	0.00	0.00	0.00	0.00	0.00	0.00	0.00	0.00	0.00	0.00	0.00	0.00	0.00	0.00	0.00	0.00
120	0.00	0.00	0.00	0.00	0.00	0.00	0.00	0.00	0.00	0.00	0.00	0.00	0.00	0.00	0.00	0.00	0.00	0.00	0.00
125	0.00	0.00	0.00	0.00	0.00	0.00	0.00	0.00	0.00	0.00	0.00	0.00	0.00	0.00	0.00	0.00	0.00	0.00	0.00
130	0.00	0.00	0.00	0.00	0.00	0.00	0.00	0.00	0.00	0.00	0.00	0.00	0.00	0.00	0.00	0.00	0.00	0.00	0.00
135	0.00	0.00	0.00	0.00	0.00	0.00	0.00	0.00	0.00	0.00	0.00	0.00	0.00	0.00	0.00	0.00	0.00	0.00	0.00
140	0.00	0.00	0.00	0.00	0.00	0.00	0.00	0.00	0.00	0.00	0.00	0.00	0.00	0.00	0.00	0.00	0.00	0.00	0.00
145	0.00	0.00	0.00	0.00	0.00	0.00	0.00	0.00	0.00	0.00	0.00	0.00	0.00	0.00	0.00	0.00	0.00	0.00	0.00
150	0.00	0.00	0.00	0.00	0.00	0.00	0.00	0.00	0.00	0.00	0.00	0.00	0.00	0.00	0.00	0.00	0.00	0.00	0.00
155	0.00	0.00	0.00	0.00	0.00	0.00	0.00	0.00	0.00	0.00	0.00	0.00	0.00	0.00	0.00	0.00	0.00	0.00	0.00
160	0.00	0.00	0.00	0.00	0.00	0.00	0.00	0.00	0.00	0.00	0.00	0.00	0.00	0.00	0.00	0.00	0.00	0.00	0.00
165	0.00	0.00	0.00	0.00	0.00	0.00	0.00	0.00	0.00	0.00	0.00	0.00	0.00	0.00	0.00	0.00	0.00	0.00	0.00
170	0.00	0.00	0.00	0.00	0.00	0.00	0.00	0.00	0.00	0.00	0.00	0.00	0.00	0.00	0.00	0.00	0.00	0.00	0.00
175	0.00	0.00	0.00	0.00	0.00	0.00	0.00	0.00	0.00	0.00	0.00	0.00	0.00	0.00	0.00	0.00	0.00	0.00	0.00
180	0.00	0.00	0.00	0.00	0.00	0.00	0.00	0.00	0.00	0.00	0.00	0.00	0.00	0.00	0.00	0.00	0.00	0.00	0.00

C Range: 0 - 360DEG
 C Interval: 5.0DEG
 Test Speed: HIGH
 Temperature:32DEG
 Operators:HUA
 Test Date:2017-09-27

γ Range: 0 - 180DEG
 γ Interval: 0.5DEG
 Test System:EVERFINE GO-2000B_V1 SYSTEM V2.0.350
 Humidity:36%
 Test Distance:12.218m [K=1.0000]
 Remarks:

LUMINOUS DISTRIBUTION INTENSITY DATA

Test:U:120.08V I:0.3331A P:40W PF:0.9925 Lamp Flux:4600x1 lm		
NAME: ASD-ELP12-24D4040-SHE	TYPE:LED PANEL	WEIGHT:
SPEC.:	DIM.: 2x4	SERIAL No.:BLD20170927P02
MFR.: ASD Lighting corp	SUR.:0.555*1.175	Shielding Angle:

Table--2

UNIT: cd

C(DEG) γ (DEG)	95	100	105	110	115	120	125	130	135	140	145	150	155	160	165	170	175	180	185
0	1543	1543	1543	1543	1543	1543	1543	1543	1543	1543	1543	1543	1543	1543	1543	1543	1543	1543	1543
5	1521	1521	1521	1521	1522	1522	1523	1523	1524	1525	1526	1527	1528	1529	1531	1533	1534	1536	1535
10	1499	1499	1499	1499	1499	1498	1498	1498	1499	1499	1500	1501	1503	1505	1507	1510	1513	1517	1514
15	1474	1474	1474	1474	1473	1472	1470	1469	1467	1466	1466	1466	1467	1468	1471	1474	1478	1483	1479
20	1420	1420	1421	1421	1423	1425	1427	1428	1428	1426	1424	1422	1421	1422	1423	1427	1432	1438	1433
25	1362	1362	1362	1361	1361	1361	1362	1363	1366	1369	1371	1369	1366	1364	1365	1368	1373	1381	1375
30	1304	1303	1302	1300	1298	1296	1294	1293	1293	1294	1297	1302	1302	1298	1296	1298	1303	1313	1306
35	1215	1215	1216	1217	1219	1222	1225	1220	1217	1214	1214	1217	1222	1223	1218	1218	1223	1233	1226
40	1125	1125	1124	1124	1124	1125	1126	1129	1134	1131	1127	1125	1127	1134	1131	1129	1133	1144	1136
45	1033	1032	1032	1031	1029	1027	1026	1026	1027	1031	1036	1030	1028	1030	1036	1031	1033	1044	1036
50	919	919	920	921	922	924	924	921	919	918	921	927	923	921	926	926	926	937	928
55	802	802	801	801	802	802	804	806	808	806	804	805	811	808	807	813	810	820	813
60	685	685	684	683	681	680	680	679	680	683	686	683	683	690	685	689	687	697	690
65	552	552	553	553	554	555	556	554	553	552	553	556	554	553	559	555	560	568	563
70	419	419	419	419	420	420	421	422	423	424	422	420	418	417	414	417	426	433	432
75	286	287	288	288	289	290	291	291	291	292	292	290	285	281	276	275	282	302	300
80	168	168	168	167	167	166	165	168	170	171	170	167	164	160	153	145	145	167	174
85	72.0	72.1	72.2	72.4	72.7	72.9	73.1	73.2	72.8	72.0	70.6	68.5	65.0	62.8	57.9	52.5	46.1	51.3	64.8
90	8.11	7.98	7.82	7.67	7.51	7.31	7.07	6.76	6.40	6.01	5.61	5.10	4.51	3.87	3.30	2.86	2.71	1.91	1.20
95	0.00	0.00	0.00	0.00	0.00	0.00	0.00	0.00	0.00	0.00	0.00	0.00	0.00	0.00	0.00	0.00	0.00	0.00	0.00
100	0.00	0.00	0.00	0.00	0.00	0.00	0.00	0.00	0.00	0.00	0.00	0.00	0.00	0.00	0.00	0.00	0.00	0.00	0.00
105	0.00	0.00	0.00	0.00	0.00	0.00	0.00	0.00	0.00	0.00	0.00	0.00	0.00	0.00	0.00	0.00	0.00	0.00	0.00
110	0.00	0.00	0.00	0.00	0.00	0.00	0.00	0.00	0.00	0.00	0.00	0.00	0.00	0.00	0.00	0.00	0.00	0.00	0.00
115	0.00	0.00	0.00	0.00	0.00	0.00	0.00	0.00	0.00	0.00	0.00	0.00	0.00	0.00	0.00	0.00	0.00	0.00	0.00
120	0.00	0.00	0.00	0.00	0.00	0.00	0.00	0.00	0.00	0.00	0.00	0.00	0.00	0.00	0.00	0.00	0.00	0.00	0.00
125	0.00	0.00	0.00	0.00	0.00	0.00	0.00	0.00	0.00	0.00	0.00	0.00	0.00	0.00	0.00	0.00	0.00	0.00	0.00
130	0.00	0.00	0.00	0.00	0.00	0.00	0.00	0.00	0.00	0.00	0.00	0.00	0.00	0.00	0.00	0.00	0.00	0.00	0.00
135	0.00	0.00	0.00	0.00	0.00	0.00	0.00	0.00	0.00	0.00	0.00	0.00	0.00	0.00	0.00	0.00	0.00	0.00	0.00
140	0.00	0.00	0.00	0.00	0.00	0.00	0.00	0.00	0.00	0.00	0.00	0.00	0.00	0.00	0.00	0.00	0.00	0.00	0.00
145	0.00	0.00	0.00	0.00	0.00	0.00	0.00	0.00	0.00	0.00	0.00	0.00	0.00	0.00	0.00	0.00	0.00	0.00	0.00
150	0.00	0.00	0.00	0.00	0.00	0.00	0.00	0.00	0.00	0.00	0.00	0.00	0.00	0.00	0.00	0.00	0.00	0.00	0.00
155	0.00	0.00	0.00	0.00	0.00	0.00	0.00	0.00	0.00	0.00	0.00	0.00	0.00	0.00	0.00	0.00	0.00	0.00	0.00
160	0.00	0.00	0.00	0.00	0.00	0.00	0.00	0.00	0.00	0.00	0.00	0.00	0.00	0.00	0.00	0.00	0.00	0.00	0.00
165	0.00	0.00	0.00	0.00	0.00	0.00	0.00	0.00	0.00	0.00	0.00	0.00	0.00	0.00	0.00	0.00	0.00	0.00	0.00
170	0.00	0.00	0.00	0.00	0.00	0.00	0.00	0.00	0.00	0.00	0.00	0.00	0.00	0.00	0.00	0.00	0.00	0.00	0.00
175	0.00	0.00	0.00	0.00	0.00	0.00	0.00	0.00	0.00	0.00	0.00	0.00	0.00	0.00	0.00	0.00	0.00	0.00	0.00
180	0.00	0.00	0.00	0.00	0.00	0.00	0.00	0.00	0.00	0.00	0.00	0.00	0.00	0.00	0.00	0.00	0.00	0.00	0.00

C Range: 0 - 360DEG
 C Interval: 5.0DEG
 Test Speed: HIGH
 Temperature:32DEG
 Operators:HUA
 Test Date:2017-09-27

γ Range: 0 - 180DEG
 γ Interval: 0.5DEG
 Test System:EVERFINE GO-2000B_V1 SYSTEM V2.0.350
 Humidity:36%
 Test Distance:12.218m [K=1.0000]
 Remarks:

LUMINOUS DISTRIBUTION INTENSITY DATA

Test:U:120.08V I:0.3331A P:40W PF:0.9925 Lamp Flux:4600x1 lm		
NAME: ASD-ELP12-24D4040-SHE	TYPE:LED PANEL	WEIGHT:
SPEC.:	DIM.: 2x4	SERIAL No.:BLD20170927P02
MFR.: ASD Lighting corp	SUR.:0.555*1.175	Shielding Angle:

Table--3

UNIT: cd

C(DEG) γ (DEG)	190	195	200	205	210	215	220	225	230	235	240	245	250	255	260	265	270	275	280
0	1543	1543	1543	1543	1543	1543	1543	1543	1543	1543	1543	1543	1543	1543	1543	1543	1543	1543	1543
5	1533	1532	1531	1530	1529	1528	1528	1527	1526	1526	1526	1526	1525	1525	1525	1525	1525	1525	1525
10	1511	1509	1508	1506	1505	1505	1505	1505	1505	1505	1506	1506	1507	1507	1507	1508	1508	1507	1507
15	1476	1474	1473	1472	1472	1473	1475	1476	1478	1480	1482	1484	1486	1486	1486	1486	1486	1486	1486
20	1430	1428	1427	1428	1430	1433	1437	1441	1441	1440	1438	1437	1436	1436	1435	1435	1435	1435	1435
25	1371	1370	1371	1375	1380	1383	1382	1379	1378	1377	1377	1378	1379	1379	1380	1380	1381	1380	1379
30	1302	1303	1306	1313	1314	1310	1308	1308	1310	1312	1315	1317	1320	1323	1324	1325	1326	1325	1323
35	1223	1225	1232	1234	1229	1229	1230	1234	1238	1244	1242	1241	1239	1239	1238	1238	1238	1237	1237
40	1134	1139	1144	1139	1139	1142	1148	1152	1149	1147	1147	1147	1148	1149	1149	1150	1150	1150	1149
45	1037	1044	1041	1040	1044	1053	1048	1046	1046	1048	1050	1053	1056	1058	1059	1059	1059	1059	1059
50	932	935	932	936	943	938	937	939	943	948	949	948	947	947	947	946	946	947	946
55	819	816	819	825	820	821	825	829	828	827	828	828	829	830	831	831	831	831	830
60	695	693	701	696	698	703	702	701	702	704	706	709	711	713	714	715	716	715	714
65	563	570	566	569	571	570	571	573	578	581	581	581	582	582	583	583	583	583	582
70	431	432	435	436	436	439	442	443	444	445	446	447	448	449	449	450	450	449	449
75	301	303	302	305	306	308	308	310	311	313	313	314	314	315	315	315	315	315	315
80	175	175	177	177	180	183	184	185	184	184	185	187	189	190	191	191	191	191	190
85	64.3	65.8	69.9	71.6	74.7	77.1	79.1	80.8	81.9	82.7	83.2	83.5	83.7	83.9	84.1	84.2	84.2	84.1	83.9
90	1.21	1.50	2.34	3.12	4.06	5.03	5.96	6.83	7.65	8.36	8.91	9.35	9.71	10.1	10.4	10.6	10.6	10.5	10.3
95	0.00	0.00	0.00	0.00	0.00	0.00	0.00	0.00	0.00	0.00	0.00	0.00	0.00	0.00	0.00	0.00	0.00	0.00	0.00
100	0.00	0.00	0.00	0.00	0.00	0.00	0.00	0.00	0.00	0.00	0.00	0.00	0.00	0.00	0.00	0.00	0.00	0.00	0.00
105	0.00	0.00	0.00	0.00	0.00	0.00	0.00	0.00	0.00	0.00	0.00	0.00	0.00	0.00	0.00	0.00	0.00	0.00	0.00
110	0.00	0.00	0.00	0.00	0.00	0.00	0.00	0.00	0.00	0.00	0.00	0.00	0.00	0.00	0.00	0.00	0.00	0.00	0.00
115	0.00	0.00	0.00	0.00	0.00	0.00	0.00	0.00	0.00	0.00	0.00	0.00	0.00	0.00	0.00	0.00	0.00	0.00	0.00
120	0.00	0.00	0.00	0.00	0.00	0.00	0.00	0.00	0.00	0.00	0.00	0.00	0.00	0.00	0.00	0.00	0.00	0.00	0.00
125	0.00	0.00	0.00	0.00	0.00	0.00	0.00	0.00	0.00	0.00	0.00	0.00	0.00	0.00	0.00	0.00	0.00	0.00	0.00
130	0.00	0.00	0.00	0.00	0.00	0.00	0.00	0.00	0.00	0.00	0.00	0.00	0.00	0.00	0.00	0.00	0.00	0.00	0.00
135	0.00	0.00	0.00	0.00	0.00	0.00	0.00	0.00	0.00	0.00	0.00	0.00	0.00	0.00	0.00	0.00	0.00	0.00	0.00
140	0.00	0.00	0.00	0.00	0.00	0.00	0.00	0.00	0.00	0.00	0.00	0.00	0.00	0.00	0.00	0.00	0.00	0.00	0.00
145	0.00	0.00	0.00	0.00	0.00	0.00	0.00	0.00	0.00	0.00	0.00	0.00	0.00	0.00	0.00	0.00	0.00	0.00	0.00
150	0.00	0.00	0.00	0.00	0.00	0.00	0.00	0.00	0.00	0.00	0.00	0.00	0.00	0.00	0.00	0.00	0.00	0.00	0.00
155	0.00	0.00	0.00	0.00	0.00	0.00	0.00	0.00	0.00	0.00	0.00	0.00	0.00	0.00	0.00	0.00	0.00	0.00	0.00
160	0.00	0.00	0.00	0.00	0.00	0.00	0.00	0.00	0.00	0.00	0.00	0.00	0.00	0.00	0.00	0.00	0.00	0.00	0.00
165	0.00	0.00	0.00	0.00	0.00	0.00	0.00	0.00	0.00	0.00	0.00	0.00	0.00	0.00	0.00	0.00	0.00	0.00	0.00
170	0.00	0.00	0.00	0.00	0.00	0.00	0.00	0.00	0.00	0.00	0.00	0.00	0.00	0.00	0.00	0.00	0.00	0.00	0.00
175	0.00	0.00	0.00	0.00	0.00	0.00	0.00	0.00	0.00	0.00	0.00	0.00	0.00	0.00	0.00	0.00	0.00	0.00	0.00
180	0.00	0.00	0.00	0.00	0.00	0.00	0.00	0.00	0.00	0.00	0.00	0.00	0.00	0.00	0.00	0.00	0.00	0.00	0.00

C Range: 0 - 360DEG
 C Interval: 5.0DEG
 Test Speed: HIGH
 Temperature:32DEG
 Operators:HUA
 Test Date:2017-09-27

γ Range: 0 - 180DEG
 γ Interval: 0.5DEG
 Test System:EVERFINE GO-2000B_V1 SYSTEM V2.0.350
 Humidity:36%
 Test Distance:12.218m [K=1.0000]
 Remarks:

LUMINOUS DISTRIBUTION INTENSITY DATA

Test:U:120.08V I:0.3331A P:40W PF:0.9925 Lamp Flux:4600x1 lm		
NAME: ASD-ELP12-24D4040-SHE	TYPE:LED PANEL	WEIGHT:
SPEC.:	DIM.: 2x4	SERIAL No.:BLD20170927P02
MFR.: ASD Lighting corp	SUR.:0.555*1.175	Shielding Angle:

Table--4

UNIT: cd

C(DEG) γ (DEG)	285	290	295	300	305	310	315	320	325	330	335	340	345	350	355				
0	1543	1543	1543	1543	1543	1543	1543	1543	1543	1543	1543	1543	1543	1543	1543				
5	1525	1525	1525	1526	1526	1526	1527	1527	1528	1528	1529	1530	1531	1533	1534				
10	1507	1506	1506	1505	1505	1505	1504	1504	1505	1505	1506	1507	1508	1510	1513				
15	1486	1486	1485	1482	1480	1478	1476	1474	1473	1472	1472	1472	1473	1475	1479				
20	1435	1436	1437	1438	1440	1441	1440	1437	1433	1430	1428	1426	1427	1429	1432				
25	1379	1378	1377	1377	1377	1377	1379	1382	1383	1379	1374	1371	1369	1370	1373				
30	1322	1319	1317	1313	1311	1309	1308	1308	1310	1314	1312	1305	1302	1301	1304				
35	1238	1238	1239	1241	1243	1237	1233	1229	1227	1229	1233	1232	1224	1222	1224				
40	1148	1147	1146	1146	1146	1147	1150	1147	1141	1138	1139	1144	1138	1133	1133				
45	1058	1056	1053	1050	1047	1045	1045	1047	1050	1042	1038	1040	1044	1036	1034				
50	946	947	948	949	947	943	938	936	936	940	934	930	934	931	926				
55	829	828	827	827	827	828	829	825	820	818	822	816	814	819	811				
60	712	710	708	705	703	701	700	702	703	697	694	698	691	695	689				
65	582	581	580	580	579	576	573	570	569	571	568	564	567	562	561				
70	448	448	447	446	444	443	442	442	438	436	435	435	431	430	431				
75	315	314	314	314	312	311	310	308	307	306	304	302	302	300	299				
80	190	189	187	186	184	185	185	185	184	181	178	177	175	175	172				
85	83.7	83.5	83.4	83.0	82.3	81.6	80.6	79.2	77.5	75.5	72.8	70.9	66.6	64.5	65.0				
90	9.96	9.60	9.21	8.71	8.03	7.24	6.37	5.46	4.49	3.51	2.63	1.77	1.17	1.17	1.17				
95	0.00	0.00	0.00	0.00	0.00	0.00	0.00	0.00	0.00	0.00	0.00	0.00	0.00	0.00	0.00				
100	0.00	0.00	0.00	0.00	0.00	0.00	0.00	0.00	0.00	0.00	0.00	0.00	0.00	0.00	0.00				
105	0.00	0.00	0.00	0.00	0.00	0.00	0.00	0.00	0.00	0.00	0.00	0.00	0.00	0.00	0.00				
110	0.00	0.00	0.00	0.00	0.00	0.00	0.00	0.00	0.00	0.00	0.00	0.00	0.00	0.00	0.00				
115	0.00	0.00	0.00	0.00	0.00	0.00	0.00	0.00	0.00	0.00	0.00	0.00	0.00	0.00	0.00				
120	0.00	0.00	0.00	0.00	0.00	0.00	0.00	0.00	0.00	0.00	0.00	0.00	0.00	0.00	0.00				
125	0.00	0.00	0.00	0.00	0.00	0.00	0.00	0.00	0.00	0.00	0.00	0.00	0.00	0.00	0.00				
130	0.00	0.00	0.00	0.00	0.00	0.00	0.00	0.00	0.00	0.00	0.00	0.00	0.00	0.00	0.00				
135	0.00	0.00	0.00	0.00	0.00	0.00	0.00	0.00	0.00	0.00	0.00	0.00	0.00	0.00	0.00				
140	0.00	0.00	0.00	0.00	0.00	0.00	0.00	0.00	0.00	0.00	0.00	0.00	0.00	0.00	0.00				
145	0.00	0.00	0.00	0.00	0.00	0.00	0.00	0.00	0.00	0.00	0.00	0.00	0.00	0.00	0.00				
150	0.00	0.00	0.00	0.00	0.00	0.00	0.00	0.00	0.00	0.00	0.00	0.00	0.00	0.00	0.00				
155	0.00	0.00	0.00	0.00	0.00	0.00	0.00	0.00	0.00	0.00	0.00	0.00	0.00	0.00	0.00				
160	0.00	0.00	0.00	0.00	0.00	0.00	0.00	0.00	0.00	0.00	0.00	0.00	0.00	0.00	0.00				
165	0.00	0.00	0.00	0.00	0.00	0.00	0.00	0.00	0.00	0.00	0.00	0.00	0.00	0.00	0.00				
170	0.00	0.00	0.00	0.00	0.00	0.00	0.00	0.00	0.00	0.00	0.00	0.00	0.00	0.00	0.00				
175	0.00	0.00	0.00	0.00	0.00	0.00	0.00	0.00	0.00	0.00	0.00	0.00	0.00	0.00	0.00				
180	0.00	0.00	0.00	0.00	0.00	0.00	0.00	0.00	0.00	0.00	0.00	0.00	0.00	0.00	0.00				

C Range: 0 - 360DEG
 C Interval: 5.0DEG
 Test Speed: HIGH
 Temperature:32DEG
 Operators:HUA
 Test Date:2017-09-27

γ Range: 0 - 180DEG
 γ Interval: 0.5DEG
 Test System:EVERFINE GO-2000B_V1 SYSTEM V2.0.350
 Humidity:36%
 Test Distance:12.218m [K=1.0000]
 Remarks: