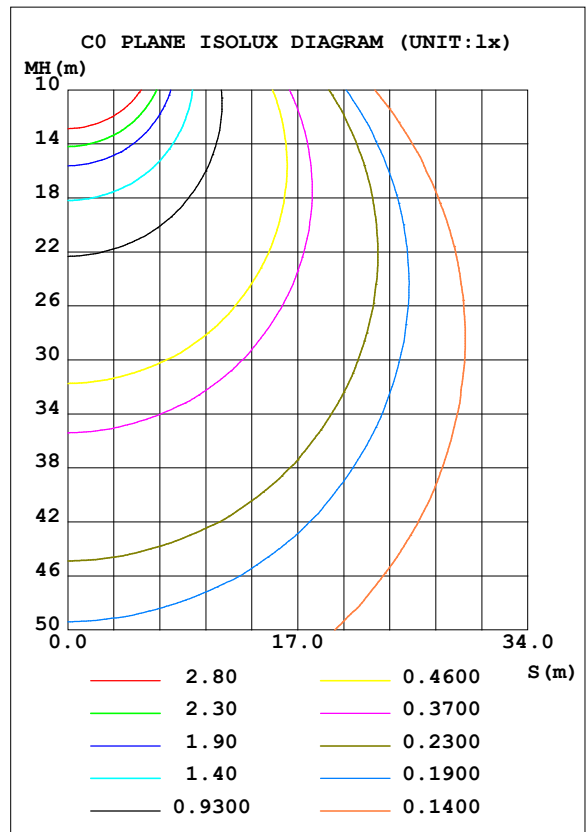
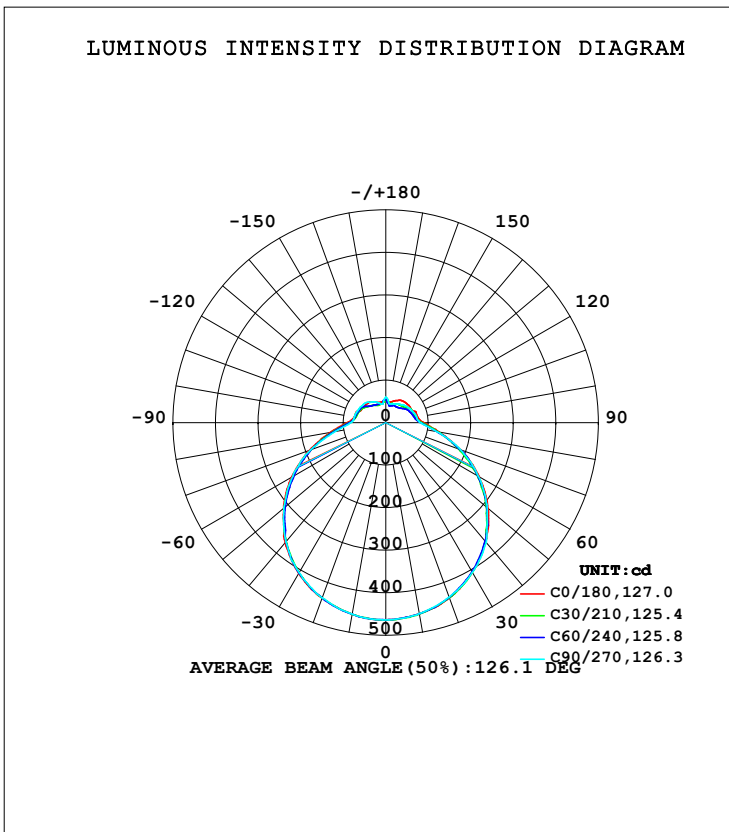


LUMINAIRE PHOTOMETRIC TEST REPORT

Test:U:120.06V I:0.2602A P:28.615W PF:0.9144 Freq:60.00Hz Lamp Flux:2036.9x1 lm		
NAME: ASD lighting Corp	TYPE:	WEIGHT:
SPEC.:ASD-LFC-SN-16D28-AC-3500K	DIM.:	SERIAL No.:
MFR.: ASD lighting Corp	SUR.:0.43*0.39	Shielding Angle:

DATA OF LAMP		PHOTOMETRIC DATA			
MODEL	ASD-LFC-SN-16D28-AC	Imax (cd)	464.3	S/MH (C0/180)	1.31
NOMINAL POWER (W)	--	LOR (%)	100.0	S/MH (C90/270)	1.31
RATED VOLTAGE (V)	--	TOTAL FLUX (lm)	2036.9	<input type="checkbox"/> UP, DN (C0-180)	10.1,39.8
NOMINAL FLUX (lm)	2036.9	CIE CLASS	SEMI-D.	<input type="checkbox"/> UP, DN (C180-360)	10.2,39.9
LAMPS INSIDE	1	<input type="checkbox"/> up (%)	20.3	CIBSE SHR NOM	1.50
TEST VOLTAGE (V)	--	<input type="checkbox"/> down (%)	79.7	CIBSE SHR MAX	1.50



C Range: 0 - 360DEG
 C Interval: 30.0DEG
 Test Speed: HIGH
 Temperature:25.3DEG
 Operators:admin
 Test Date:2022-03-16

Range: 0 - 180DEG
 Interval: 1.0DEG
 Test System:EVERFINE GO-2000B_V1 SYSTEM V2.00.411
 Humidity:65.0%
 Test Distance:8.780m [K=1.0000]
 Remarks:

ZONAL FLUX DIAGRAM

ZONAL FLUX DIAGRAM:

mm	C0	C45	C90	C135	C180	C225	C270	C315	mm	□ zone	□ total	%lum, lamp
10	456.1	456.3	455.6	456.9	456.9	457.6	457.2	457.6	0- 10	43.92	43.92	2.16,2.16
20	438.4	437.6	436.3	438.7	438.8	438.1	437.9	438.1	10- 20	126.8	170.7	8.38,8.38
30	406.3	405.9	407.1	408.7	409.4	408.1	407.3	407.9	20- 30	195.7	366.5	18,18
40	365.2	364.1	367.7	369.3	367.9	364.6	365.8	366.2	30- 40	243.1	609.6	29.9,29.9
50	313.8	308.9	311.4	317.5	313.7	310.3	313.1	313.8	40- 50	262.4	872.0	42.8,42.8
60	254.1	248.8	251.3	258.0	255.5	249.5	252.5	256.8	50- 60	253.9	1126	55.3,55.3
70	186.7	183.6	186.6	193.2	191.6	186.8	188.6	193.2	60- 70	219.5	1345	66,66
80	127.9	122.4	121.4	129.0	132.6	125.7	120.5	126.5	70- 80	165.2	1511	74.2,74.2
90	89.78	84.24	81.76	90.61	91.10	86.49	82.17	87.23	80- 90	113.1	1624	79.7,79.7
100	76.40	70.25	74.15	79.78	75.94	72.93	75.45	77.83	90-100	86.78	1710	84,84
110	75.44	66.79	70.24	76.46	74.27	69.95	73.34	75.23	100-110	78.14	1789	87.8,87.8
120	68.13	63.36	66.19	71.94	65.34	66.88	70.83	71.57	110-120	69.67	1858	91.2,91.2
130	67.53	54.70	61.55	61.24	63.78	59.14	67.96	60.89	120-130	58.19	1916	94.1,94.1
140	65.70	50.13	55.94	52.88	62.15	52.60	63.05	55.35	130-140	45.23	1962	96.3,96.3
150	60.83	48.25	50.29	48.46	56.84	48.12	56.55	53.61	140-150	33.72	1995	98,98
160	54.12	45.69	47.35	47.88	50.74	45.83	49.81	52.68	150-160	23.28	2019	99.1,99.1
170	48.81	42.70	46.19	47.26	49.09	45.26	44.70	46.99	160-170	13.48	2032	99.8,99.8
180	56.57	53.52	60.34	52.39	56.57	53.46	60.37	52.47	170-180	4.740	2037	100,100
DEG	LUMINOUS INTENSITY:cd									UNIT:lm		

Conical surface Flux(90deg): 740.24 lm

%lum = 36.3%

%lamp = 36.3%

Conical surface Flux(120deg): 1125.9 lm

%lum = 55.3%

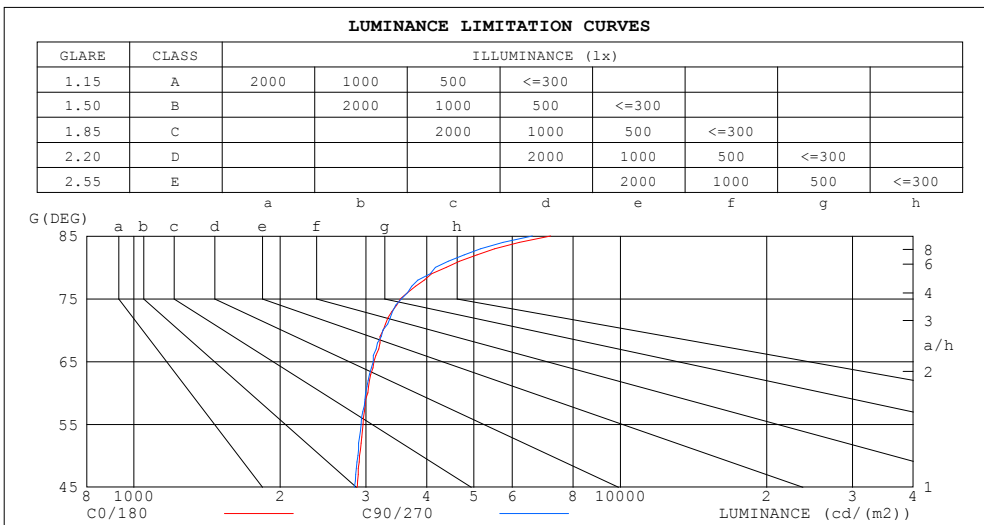
%lamp = 55.3%

C Range: 0 - 360DEG
 C Interval: 30.0DEG
 Test Speed: HIGH
 Temperature:25.3DEG
 Operators:admin
 Test Date:2022-03-16

□ Range: 0 - 180DEG
 □ Interval: 1.0DEG
 Test System:EVERFINE GO-2000B_V1 SYSTEM V2.00.411
 Humidity:65.0%
 Test Distance:8.780m [K=1.0000]
 Remarks:

LUMINANCE LIMITATION CURVES

Test:U:120.06V I:0.2602A P:28.615W PF:0.9144 Freq:60.00Hz Lamp Flux:2036.9x1 lm		
NAME: ASD lighting Corp	TYPE:	WEIGHT:
SPEC.:ASD-LFC-SN-16D28-AC-3500K	DIM.:	SERIAL No.:
MFR.: ASD lighting Corp	SUR.:0.43*0.39	Shielding Angle:



LUMINANCE cd/(m2)		
G (DEG)	C0/180	C90/270
85	7188	6594
80	4392	4170
75	3534	3550
70	3256	3253
65	3116	3108
60	3030	2997
55	2960	2934
50	2911	2888
45	2879	2843

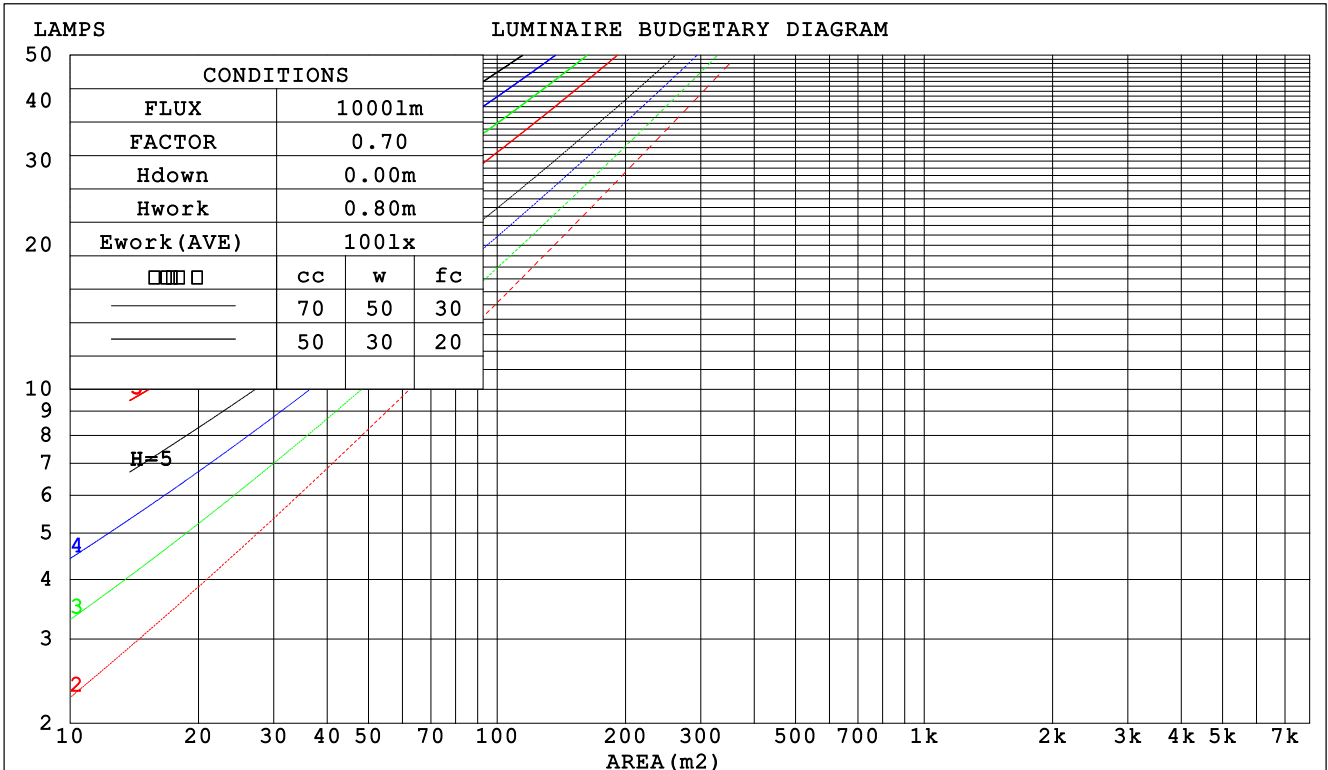
C Range: 0 - 360DEG
 C Interval: 30.0DEG
 Test Speed: HIGH
 Temperature:25.3DEG
 Operators:admin
 Test Date:2022-03-16

Range: 0 - 180DEG
 Interval: 1.0DEG
 Test System:EVERFINE GO-2000B_V1 SYSTEM V2.00.411
 Humidity:65.0%
 Test Distance:8.780m [K=1.0000]
 Remarks:

CU AND LUMINAIRE BUDGETARY ESTIMATE DIAGRAM

Test:U:120.06V I:0.2602A P:28.615W PF:0.9144 Freq:60.00Hz Lamp Flux:2036.9x1 lm		
NAME: ASD lighting Corp	TYPE:	WEIGHT:
SPEC.:ASD-LFC-SN-16D28-AC-3500K	DIM.:	SERIAL No.:
MFR.: ASD lighting Corp	SUR.:0.43*0.39	Shielding Angle:

□cc	80%			70%			50%			30%			10%			0
□w	50%	30%	10%	50%	30%	10%	50%	30%	10%	50%	30%	10%	50%	30%	10%	0
□fc	20%			20%			20%			20%			20%			0
RCR	RCR:Room Cavity Ratio						Coefficients of Utilization(CU)									
0.0	1.14	1.14	1.14	1.09	1.09	1.09	.00	.00	.00	.91	.91	.91	.83	.83	.83	.80
1.0	.97	.92	.87	.92	.88	.84	.84	.81	.77	.77	.74	.71	.70	.68	.66	.62
2.0	.83	.76	.69	.79	.73	.67	.72	.67	.62	.66	.62	.58	.60	.57	.54	.50
3.0	.72	.64	.57	.69	.61	.55	.63	.57	.51	.58	.52	.48	.53	.48	.45	.41
4.0	.64	.54	.47	.61	.52	.46	.56	.49	.43	.51	.45	.40	.47	.42	.38	.35
5.0	.56	.47	.40	.54	.46	.39	.50	.42	.37	.46	.39	.35	.42	.37	.33	.30
6.0	.51	.41	.35	.49	.40	.34	.45	.37	.32	.41	.35	.30	.38	.32	.28	.26
7.0	.46	.37	.31	.44	.36	.30	.40	.33	.28	.37	.31	.27	.34	.29	.25	.23
8.0	.41	.33	.27	.40	.32	.26	.37	.30	.25	.34	.28	.24	.31	.26	.22	.20
9.0	.38	.30	.24	.37	.29	.23	.34	.27	.22	.31	.25	.21	.29	.24	.20	.18
10.0	.35	.27	.22	.34	.26	.21	.31	.25	.20	.29	.23	.19	.27	.22	.18	.16



C Range: 0 - 360DEG
 C Interval: 30.0DEG
 Test Speed: HIGH
 Temperature:25.3DEG
 Operators:admin
 Test Date:2022-03-16

□ Range: 0 - 180DEG
 □ Interval: 1.0DEG
 Test System:EVERFINE GO-2000B_V1 SYSTEM V2.00.411
 Humidity:65.0%
 Test Distance:8.780m [K=1.0000]
 Remarks:

WEC AND CCEC

Test:U:120.06V I:0.2602A P:28.615W PF:0.9144 Freq:60.00Hz Lamp Flux:2036.9x1 lm		
NAME: ASD lighting Corp	TYPE:	WEIGHT:
SPEC.:ASD-LFC-SN-16D28-AC-3500K	DIM.:	SERIAL No.:
MFR.: ASD lighting Corp	SUR.:0.43*0.39	Shielding Angle:

<input type="checkbox"/> cc	80%	70%	50%	30%	10%	0
<input type="checkbox"/> w	50% 30% 10%	50% 30% 10%	50% 30% 10%	50% 30% 10%	50% 30% 10%	0
<input type="checkbox"/> fc	20%	20%	20%	20%	20%	0
RCR	RCR:Room Cavity Ratio		Wall Exitance Coefficients (WEC)			
0.0						
1.0	.357 .203 .064	.344 .196 .062	.319 .183 .058	.296 .171 .055	.275 .159 .051	
2.0	.316 .173 .053	.304 .168 .052	.282 .157 .049	.261 .146 .046	.241 .137 .043	
3.0	.284 .151 .045	.273 .146 .044	.253 .137 .042	.234 .128 .039	.216 .120 .037	
4.0	.258 .134 .039	.248 .130 .038	.229 .122 .036	.212 .114 .034	.196 .107 .032	
5.0	.236 .120 .035	.227 .116 .034	.210 .109 .032	.194 .102 .030	.179 .096 .029	
6.0	.217 .109 .031	.208 .105 .030	.193 .099 .029	.179 .093 .027	.165 .087 .026	
7.0	.200 .099 .028	.193 .096 .027	.179 .090 .026	.166 .085 .025	.153 .080 .023	
8.0	.186 .091 .026	.179 .088 .025	.166 .083 .024	.154 .078 .023	.143 .073 .021	
9.0	.174 .084 .023	.168 .082 .023	.156 .077 .022	.144 .072 .021	.134 .068 .020	
10.0	.163 .078 .022	.157 .076 .021	.146 .072 .020	.136 .067 .019	.126 .063 .018	

<input type="checkbox"/> cc	80%	70%	50%	30%	10%	0
<input type="checkbox"/> w	50% 30% 10%	50% 30% 10%	50% 30% 10%	50% 30% 10%	50% 30% 10%	0
<input type="checkbox"/> fc	20%	20%	20%	20%	20%	0
RCR	RCR:Room Cavity Ratio		Ceiling Cavity Exitance Coefficients (CCEC)			
0.0	.345 .345 .345	.295 .295 .295	.201 .201 .201	.116 .116 .116	.037 .037 .037	
1.0	.339 .312 .286	.290 .267 .247	.199 .184 .170	.114 .106 .099	.037 .034 .032	
2.0	.332 .289 .252	.285 .248 .218	.195 .172 .152	.112 .100 .089	.036 .032 .029	
3.0	.325 .272 .230	.279 .235 .199	.191 .163 .140	.110 .095 .082	.035 .031 .027	
4.0	.317 .260 .215	.272 .224 .187	.187 .156 .132	.108 .092 .078	.035 .030 .026	
5.0	.310 .250 .205	.266 .216 .179	.183 .151 .126	.106 .089 .075	.034 .029 .025	
6.0	.303 .242 .198	.260 .209 .173	.180 .147 .122	.104 .086 .073	.034 .028 .024	
7.0	.296 .235 .193	.254 .204 .168	.176 .143 .119	.102 .084 .071	.033 .028 .023	
8.0	.289 .230 .189	.249 .199 .165	.172 .140 .117	.100 .083 .070	.032 .027 .023	
9.0	.283 .225 .186	.244 .195 .162	.169 .137 .115	.098 .081 .069	.032 .027 .023	
10.0	.278 .221 .183	.239 .192 .160	.166 .135 .114	.097 .080 .068	.031 .026 .022	

C Range: 0 - 360DEG
 C Interval: 30.0DEG
 Test Speed: HIGH
 Temperature:25.3DEG
 Operators:admin
 Test Date:2022-03-16

Range: 0 - 180DEG
 Interval: 1.0DEG
 Test System:EVERFINE GO-2000B_V1 SYSTEM V2.00.411
 Humidity:65.0%
 Test Distance:8.780m [K=1.0000]
 Remarks:

UGR(Unified Glare Rating) Table

Test:U:120.06V I:0.2602A P:28.615W PF:0.9144 Freq:60.00Hz Lamp Flux:2036.9x1 lm										
NAME: ASD lighting Corp					TYPE:			WEIGHT:		
SPEC.:ASD-LFC-SN-16D28-AC-3500K					DIM.:			SERIAL No.:		
MFR.: ASD lighting Corp					SUR.:0.43*0.39			Shielding Angle:		
ceiling/cavity	0.7	0.7	0.5	0.5	0.3	0.7	0.7	0.5	0.5	0.3
walls	0.5	0.3	0.5	0.3	0.3	0.5	0.3	0.5	0.3	0.3
working plane	0.2	0.2	0.2	0.2	0.2	0.2	0.2	0.2	0.2	0.2
Room dimensions	Viewed crosswise					Viewed endwise				
x = 2H y = 2H	15.4	16.7	15.9	17.2	17.8	15.4	16.7	15.9	17.2	17.8
3H	17.4	18.6	17.9	19.1	19.8	17.4	18.6	17.9	19.1	19.8
4H	18.3	19.5	18.9	20.1	20.7	18.4	19.5	18.9	20.1	20.8
6H	19.4	20.4	20.0	21.1	21.7	19.3	20.4	19.9	21.0	21.7
8H	19.9	21.0	20.6	21.6	22.3	19.8	20.9	20.5	21.5	22.2
12H	20.6	21.6	21.2	22.2	22.9	20.4	21.4	21.0	22.0	22.8
4H 2H	16.0	17.2	16.6	17.8	18.4	16.0	17.2	16.6	17.8	18.4
3H	18.2	19.2	18.8	19.8	20.5	18.2	19.2	18.9	19.9	20.6
4H	19.3	20.3	20.0	20.9	21.7	19.4	20.3	20.0	20.9	21.7
6H	20.6	21.4	21.2	22.0	22.8	20.5	21.3	21.2	22.0	22.8
8H	21.2	22.0	21.9	22.7	23.5	21.1	21.9	21.8	22.6	23.4
12H	22.0	22.7	22.7	23.4	24.2	21.8	22.5	22.5	23.2	24.0
8H 4H	19.8	20.5	20.5	21.2	22.0	19.8	20.5	20.5	21.2	22.0
6H	21.2	21.9	22.0	22.6	23.4	21.2	21.8	21.9	22.5	23.4
8H	22.1	22.6	22.8	23.4	24.2	22.0	22.5	22.7	23.3	24.1
12H	23.1	23.6	23.8	24.3	25.2	22.9	23.4	23.6	24.1	25.0
12H 4H	19.8	20.5	20.5	21.2	22.0	19.9	20.6	20.6	21.3	22.1
6H	21.4	22.0	22.1	22.7	23.6	21.4	21.9	22.1	22.7	23.5
8H	22.3	22.8	23.1	23.6	24.5	22.2	22.7	23.0	23.5	24.4
Variations with the observer position at spacings:										
S = 1.0H	+ 0.1 / - 0.1					+ 0.1 / - 0.1				
1.5H	+ 0.2 / - 0.2					+ 0.2 / - 0.3				
2.0H	+ 0.2 / - 0.3					+ 0.2 / - 0.3				

CIE Pub.117, 2037 lm Total Lamp Luminous Flux Corrected (8log(F/F0) = 2.5)
 Area: 0.1677 m2

C Range: 0 - 360DEG
 C Interval: 30.0DEG
 Test Speed: HIGH
 Temperature:25.3DEG
 Operators:admin
 Test Date:2022-03-16

Range: 0 - 180DEG
 Interval: 1.0DEG
 Test System:EVERFINE GO-2000B_V1 SYSTEM V2.00.411
 Humidity:65.0%
 Test Distance:8.780m [K=1.0000]
 Remarks:

UTILIZATION FACTORS TABLE

Test:U:120.06V I:0.2602A P:28.615W PF:0.9144 Freq:60.00Hz Lamp Flux:2036.9x1 lm		
NAME: ASD lighting Corp	TYPE:	WEIGHT:
SPEC.:ASD-LFC-SN-16D28-AC-3500K	DIM.:	SERIAL No.:
MFR.: ASD lighting Corp	SUR.:0.43*0.39	Shielding Angle:

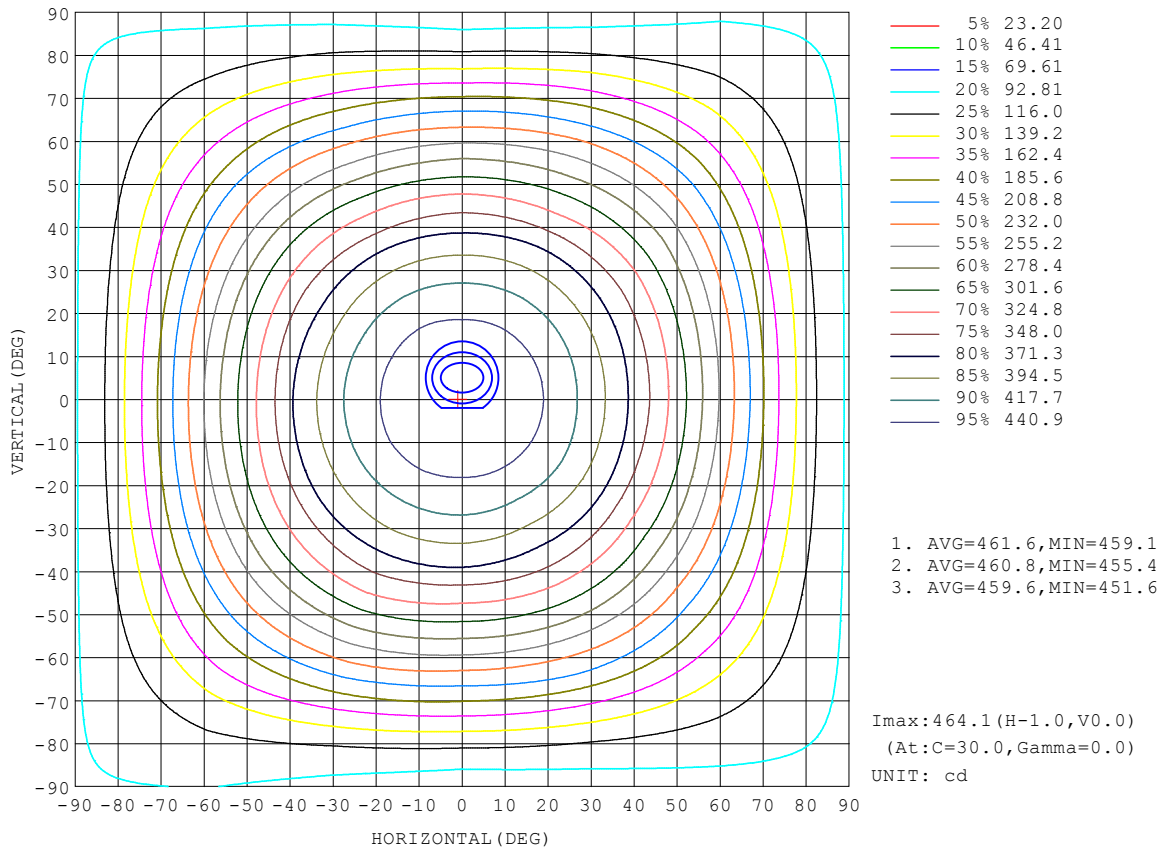
REFLECTANCE										
Ceiling	0.8	0.8	0.8	0.7	0.7	0.7	0.5	0.5	0.5	0
Walls	0.7	0.5	0.3	0.7	0.5	0.3	0.7	0.5	0.3	0
Working plane	0.2	0.2	0.2	0.2	0.2	0.2	0.2	0.2	0.2	0
ROOM INDEX	UTILIZATION FACTORS (PERCENT) $k(RI) \times RCR = 5$									
k = 0.60	48	36	29	47	36	29	45	35	28	22
0.80	58	45	37	56	44	37	53	43	36	28
1.00	66	53	45	64	52	44	60	52	43	34
1.25	73	61	52	70	59	51	65	56	49	39
1.50	78	66	58	75	64	57	70	61	54	43
2.00	85	75	67	82	72	65	76	68	62	50
2.50	89	80	72	86	77	70	79	72	66	53
3.00	93	84	77	89	81	75	82	76	71	57
4.00	98	90	84	93	87	81	86	81	76	61
5.00	100	94	89	96	90	86	88	84	80	64
ROOM INDEX	UF(total)									Direct
According to DIN EN 13032-2 2004			Suspended				SHRNOM = 1.25			

C Range: 0 - 360DEG
 C Interval: 30.0DEG
 Test Speed: HIGH
 Temperature:25.3DEG
 Operators:admin
 Test Date:2022-03-16

Range: 0 - 180DEG
 Interval: 1.0DEG
 Test System:EVERFINE GO-2000B_V1 SYSTEM V2.00.411
 Humidity:65.0%
 Test Distance:8.780m [K=1.0000]
 Remarks:

ISOCANDELA DIAGRAM

Test:U:120.06V I:0.2602A P:28.615W PF:0.9144 Freq:60.00Hz Lamp Flux:2036.9x1 lm		
NAME: ASD lighting Corp	TYPE:	WEIGHT:
SPEC.:ASD-LFC-SN-16D28-AC-3500K	DIM.:	SERIAL No.:
MFR.: ASD lighting Corp	SUR.:0.43*0.39	Shielding Angle:

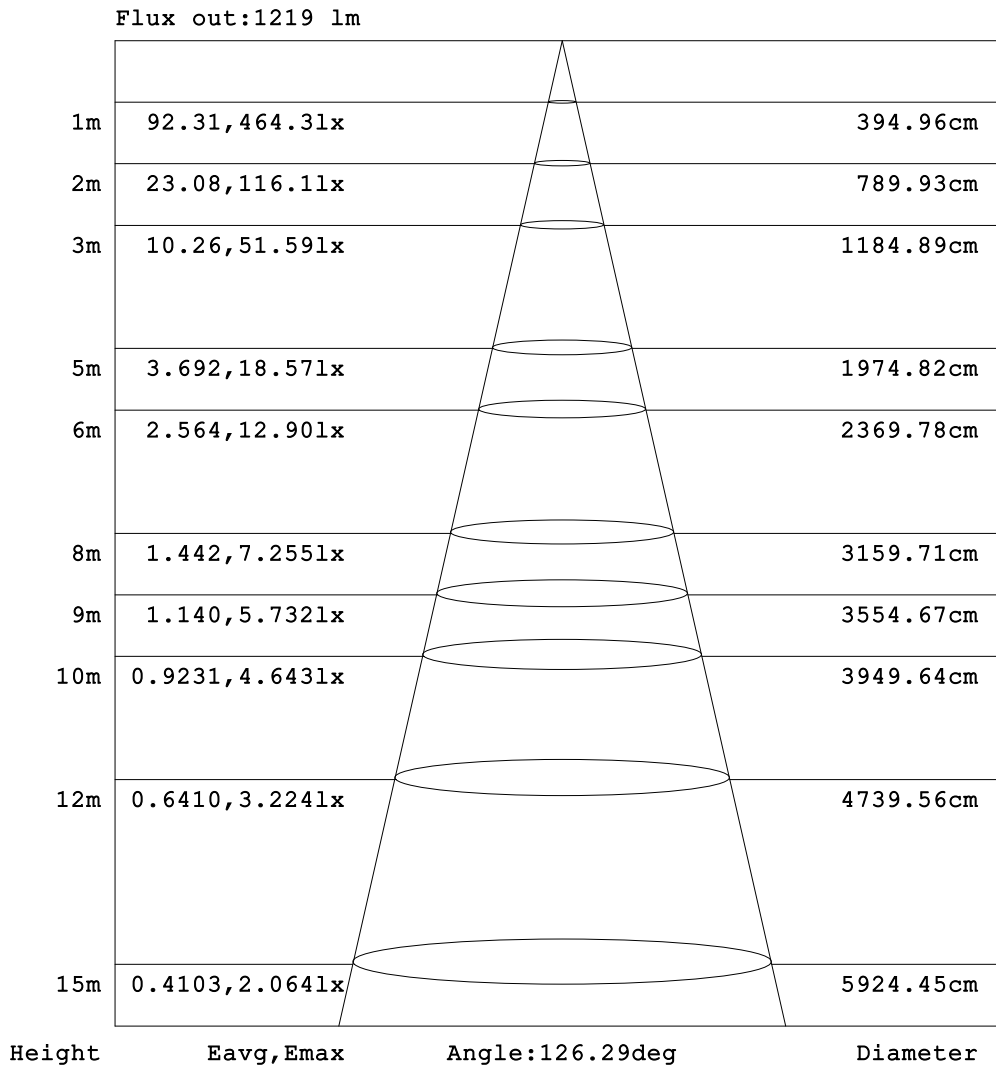


C Range: 0 - 360DEG
 C Interval: 30.0DEG
 Test Speed: HIGH
 Temperature: 25.3DEG
 Operators: admin
 Test Date: 2022-03-16

Range: 0 - 180DEG
 Interval: 1.0DEG
 Test System: EVERFINE GO-2000B_V1 SYSTEM V2.00.411
 Humidity: 65.0%
 Test Distance: 8.780m [K=1.0000]
 Remarks:

AAI Figure

Test:U:120.06V I:0.2602A P:28.615W PF:0.9144 Freq:60.00Hz Lamp Flux:2036.9x1 lm		
NAME: ASD lighting Corp	TYPE:	WEIGHT:
SPEC.:ASD-LFC-SN-16D28-AC-3500K	DIM.:	SERIAL No.:
MFR.: ASD lighting Corp	SUR.:0.43*0.39	Shielding Angle:



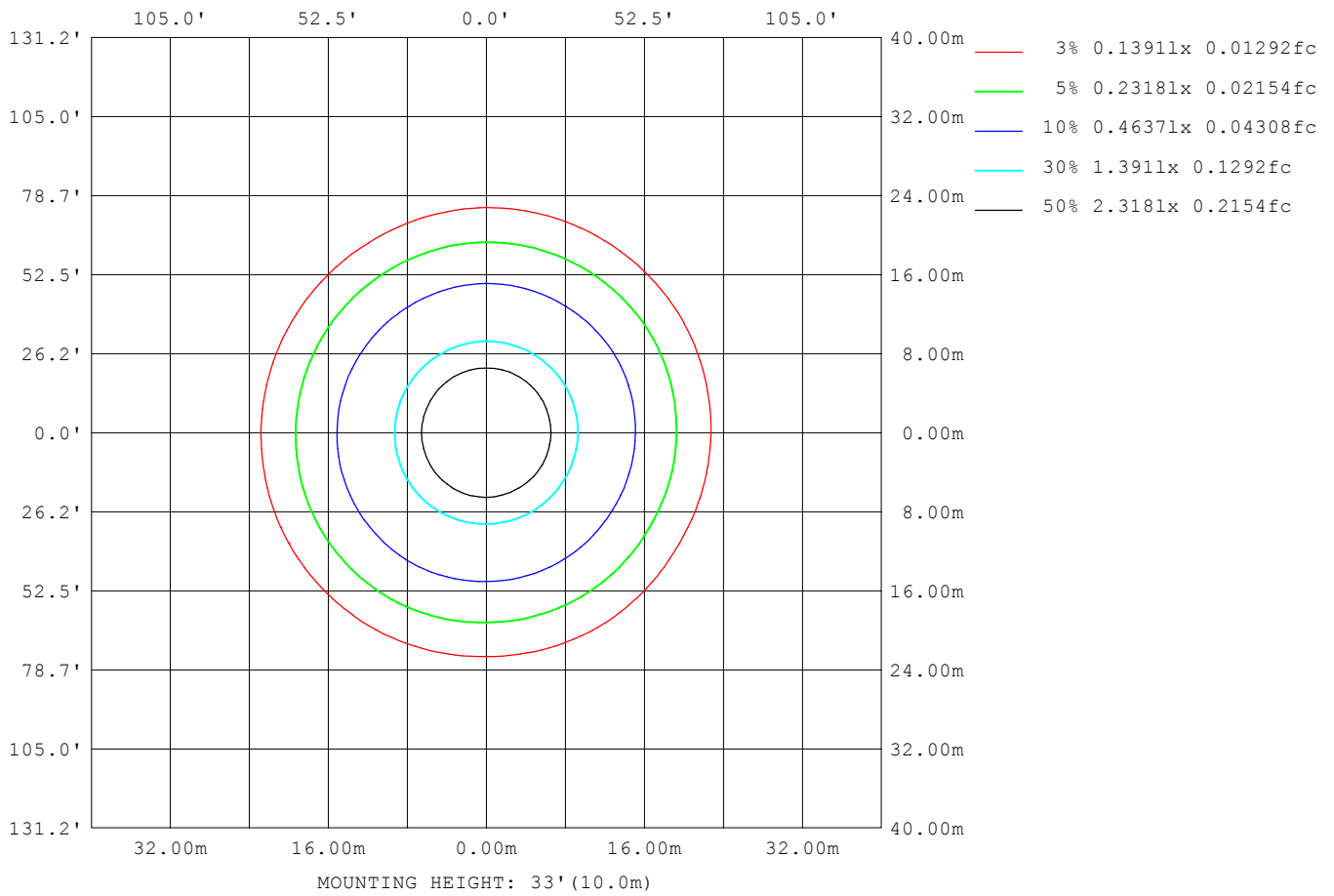
Note:The Curves indicate the illuminated area and the average illumination when the luminaire is at different distance.

C Range: 0 - 360DEG
 C Interval: 30.0DEG
 Test Speed: HIGH
 Temperature:25.3DEG
 Operators:admin
 Test Date:2022-03-16

Range: 0 - 180DEG
 Interval: 1.0DEG
 Test System:EVERFINE GO-2000B_V1 SYSTEM V2.00.411
 Humidity:65.0%
 Test Distance:8.780m [K=1.0000]
 Remarks:

ISOLUX DIAGRAM

Test:U:120.06V I:0.2602A P:28.615W PF:0.9144 Freq:60.00Hz Lamp Flux:2036.9x1 lm		
NAME: ASD lighting Corp	TYPE:	WEIGHT:
SPEC.:ASD-LFC-SN-16D28-AC-3500K	DIM.:	SERIAL No.:
MFR.: ASD lighting Corp	SUR.:0.43*0.39	Shielding Angle:



C Range: 0 - 360DEG
 C Interval: 30.0DEG
 Test Speed: HIGH
 Temperature:25.3DEG
 Operators:admin
 Test Date:2022-03-16

Range: 0 - 180DEG
 Interval: 1.0DEG
 Test System:EVERFINE GO-2000B_V1 SYSTEM V2.00.411
 Humidity:65.0%
 Test Distance:8.780m [K=1.0000]
 Remarks:

LED Avg.L Report

Test:U:120.06V I:0.2602A P:28.615W PF:0.9144 Freq:60.00Hz Lamp Flux:2036.9x1 lm		
NAME: ASD lighting Corp	TYPE:	WEIGHT:
SPEC.:ASD-LFC-SN-16D28-AC-3500K	DIM.:	SERIAL No.:
MFR.: ASD lighting Corp	SUR.:0.43*0.39	Shielding Angle:

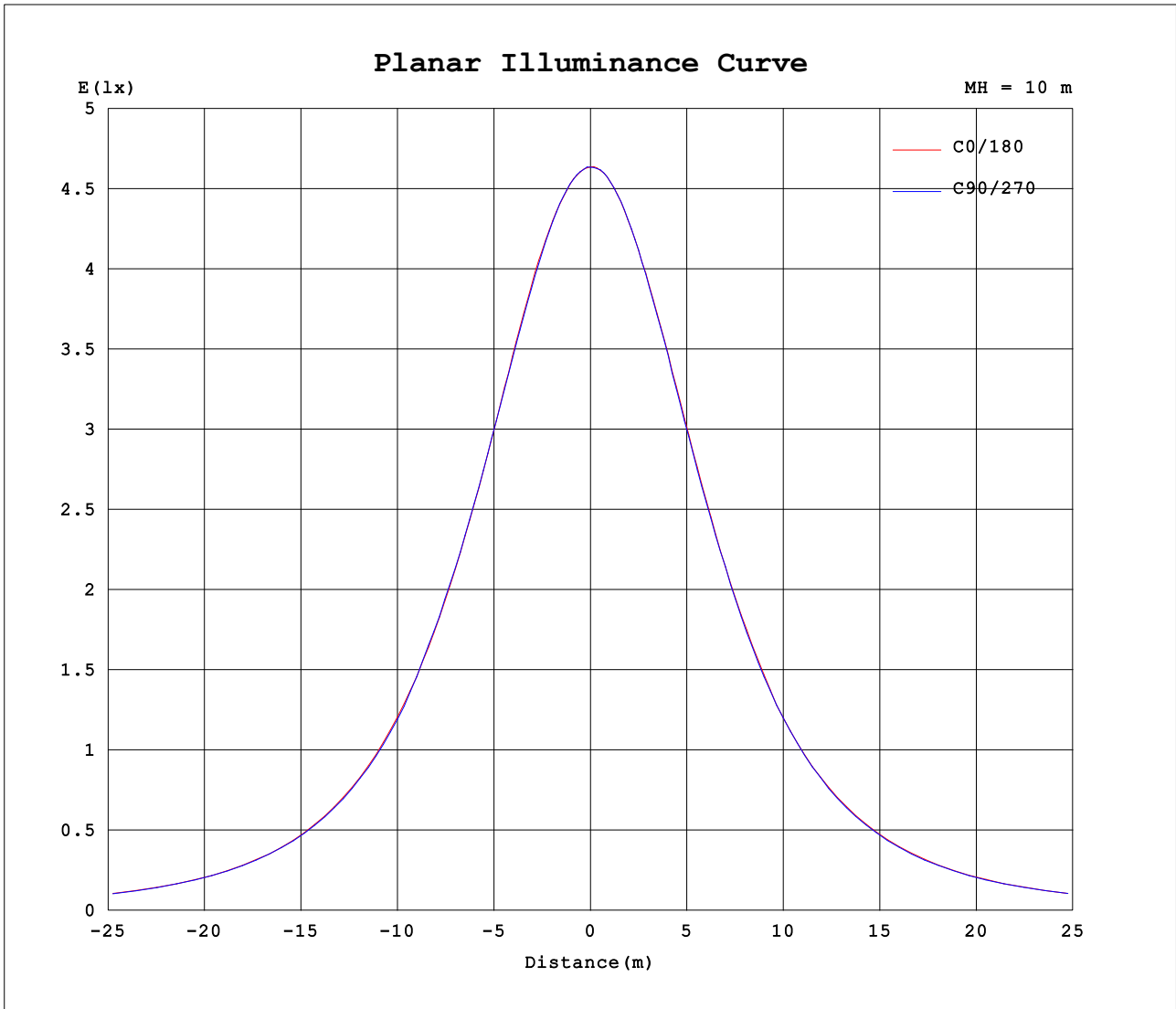
AvgL	cd/m2
L_0~180 (65) av	3127
L_0~180 (75) av	3604
L_0~180 (85) av	7296
L_90~270 (65) av	3118
L_90~270 (75) av	3522
L_90~270 (85) av	6577
L_45 (65) av	3127
L_45 (75) av	3620
L_45 (85) av	7040

Standard: GB/T 29293-2012

C Range: 0 - 360DEG
 C Interval: 30.0DEG
 Test Speed: HIGH
 Temperature:25.3DEG
 Operators:admin
 Test Date:2022-03-16

Range: 0 - 180DEG
 Interval: 1.0DEG
 Test System:EVERFINE GO-2000B_V1 SYSTEM V2.00.411
 Humidity:65.0%
 Test Distance:8.780m [K=1.0000]
 Remarks:

Planar Illuminance Curve



C Range: 0 - 360DEG
 C Interval: 30.0DEG
 Test Speed: HIGH
 Temperature:25.3DEG
 Operators:admin
 Test Date:2022-03-16

Range: 0 - 180DEG
 Interval: 1.0DEG
 Test System:EVERFINE GO-2000B_V1 SYSTEM V2.00.411
 Humidity:65.0%
 Test Distance:8.780m [K=1.0000]
 Remarks:

LUMINOUS DISTRIBUTION INTENSITY DATA

Test:U:120.06V I:0.2602A P:28.615W PF:0.9144 Freq:60.00Hz Lamp Flux:2036.9x1 lm		
NAME: ASD lighting Corp	TYPE:	WEIGHT:
SPEC.:ASD-LFC-SN-16D28-AC-3500K	DIM.:	SERIAL No.:
MFR.: ASD lighting Corp	SUR.:0.43*0.39	Shielding Angle:

Table--1

UNIT: cd

C (DEG) □ (DEG)	0	30	60	90	120	150	180	210	240	270	300	330							
0	464	464	463	463	463	462	464	464	463	463	463	462							
5	462	462	461	461	461	461	463	462	462	463	462	461							
10	456	457	456	456	456	457	457	458	457	457	458	457							
15	450	449	450	448	448	449	449	449	449	448	449	449							
20	438	438	437	436	438	440	439	438	438	438	438	438							
25	424	424	422	423	424	426	426	425	425	424	424	424							
30	406	407	405	407	408	409	409	408	408	407	408	407							
35	387	386	385	389	390	390	390	387	388	390	389	388							
40	365	365	363	368	369	370	368	364	365	366	366	366							
45	341	336	339	337	345	342	340	339	336	340	337	344							
50	314	308	309	311	318	317	314	312	309	313	312	316							
55	285	279	282	282	289	288	286	283	279	283	283	286							
60	254	248	250	251	258	258	256	251	248	252	256	258							
65	221	216	219	220	226	226	222	218	218	222	225	225							
70	187	183	184	187	193	193	192	187	187	189	194	192							
75	153	153	152	154	159	164	159	158	155	152	157	157							
80	128	124	121	121	125	133	133	127	124	120	125	128							
85	105	101	98.1	96.4	102	110	108	104	101	95.9	99.9	105							
90	89.8	86.1	82.4	81.8	87.7	93.5	91.1	87.1	85.8	82.2	84.4	90.0							
95	80.5	76.3	73.2	76.0	81.3	84.8	80.6	76.9	77.4	76.7	78.7	82.1							
100	76.4	71.5	69.0	74.2	78.7	80.9	75.9	72.0	73.9	75.4	76.7	78.9							
105	75.4	69.8	66.8	72.6	76.8	79.2	74.8	70.4	72.4	74.7	75.4	77.8							
110	75.4	69.1	64.5	70.2	75.1	77.8	74.3	69.2	70.7	73.3	73.7	76.7							
115	67.9	68.4	62.2	68.0	73.5	76.1	66.0	67.7	69.4	71.7	72.3	75.3							
120	68.1	66.8	60.0	66.2	71.6	72.3	65.3	65.6	68.2	70.8	70.7	72.4							
125	68.0	62.1	56.5	63.9	67.4	66.2	64.7	62.1	65.4	69.3	66.8	66.3							
130	67.5	57.2	52.2	61.6	61.3	61.2	63.8	58.0	60.3	68.0	61.0	60.7							
135	66.7	55.2	48.8	59.5	55.5	58.2	62.9	55.3	55.3	66.5	56.7	58.9							
140	65.7	53.7	46.6	55.9	51.1	54.7	62.2	52.9	52.3	63.1	53.6	57.1							
145	64.0	52.7	45.1	53.6	48.1	51.7	60.4	50.1	50.5	59.5	51.6	55.1							
150	60.8	51.2	45.3	50.3	47.2	49.7	56.8	47.5	48.7	56.6	52.5	54.8							
155	57.5	48.5	44.8	48.6	47.4	48.2	53.2	45.0	47.6	53.6	53.2	54.3							
160	54.1	48.1	43.2	47.3	47.9	47.9	50.7	44.7	46.9	49.8	50.9	54.5							
165	50.9	46.3	41.7	45.9	47.5	47.4	49.9	45.6	46.2	46.2	47.5	53.8							
170	48.8	43.0	42.4	46.2	47.2	47.4	49.1	46.1	44.4	44.7	44.0	50.0							
175	52.1	51.3	47.9	55.8	56.7	48.7	52.2	49.3	54.3	53.5	45.5	49.4							
180	56.6	52.0	55.1	60.3	54.8	49.9	56.6	52.0	54.9	60.4	55.0	49.9							

C Range: 0 - 360DEG
 C Interval: 30.0DEG
 Test Speed: HIGH
 Temperature:25.3DEG
 Operators:admin
 Test Date:2022-03-16

□ Range: 0 - 180DEG
 □ Interval: 1.0DEG
 Test System:EVERFINE GO-2000B_V1 SYSTEM V2.00.411
 Humidity:65.0%
 Test Distance:8.780m [K=1.0000]
 Remarks: