



LED UNDER CABINET SWIVEL

Color Adjustable

► **DESIGN & OPTIONS** - LED UNDER CABINET SWIVEL LIGHTS have a rotatable lens and a CRI 90+, making them perfect for directional lighting or as a hidden backlight. They feature smooth dimming capabilities ranging from 100% to 10% with modern LED dimmers, and the Hi/Lo switch provides 100% and 50% brightness levels. This fixture also includes a color adjustable option, letting you go from 2700K, to 3000K, to 4000K with a simple switch. It comes in 12", 18", 24", 32" and 40" sizes with a WHITE or BRONZE finish.

► **INSTALLATION** - Common installation methods for this fixture include: hardwire or plug-in, linking multiple lights together, or installing them separately. For your convenience we provide a 6 ft power cord, 6" linking cord, end-to-end connector, Romex connector, and screws. Refer to install instructions for detailed steps.

► **APPLICATION** - These LED UNDER CABINET SWIVEL LIGHTS are an ideal maintenance-free solution for residential and commercial installations. It creates a cozy ambience that is great for your family room, bedroom, cabinet or any other common area in your living space. It is also suitable for Damp locations, making it perfect for kitchens as well. You could also use it as a complimentary light to an already existing main light.

► **ENERGY SAVINGS & EFFICIENCY** - Replacing an incandescent fixture with LED UNDER CABINET SWIVEL LIGHT can save you up to 8 times as much on your energy costs. With a lifespan of 50,000 hours, these fixtures are made to last decades under normal operation! This fixture will save you a significant amount of money in its lifetime.

► **CERTIFICATION & WARRANTY** - Buy with confidence: ASD provides a 5-year warranty along with ETL and ENERGY STAR certifications to guarantee top quality products and safety!

Top US certifications allow participation in rebates; please check the rebate programs available in your state.

Catalog number	
Notes	
Type	



PRODUCT LEGEND:

Family	Size	Dimmable	Watts	CCT	Finish
ASD-UCS	XX	X	X	XX	XX
LED Under Cabinet Swivel	12 = 12 inch	D = Dimmable	5 = 5 W	CC = 2,700/3,000/4,000 K	WH = White
	18 = 18 inch		8 = 8 W		BZ = Oil Rubbed Bronze
	24 = 24 inch		12 = 12 W		
	32 = 32 inch		16 = 16 W		
	40 = 40 inch		20 = 20 W		

LED UNDER CABINET SWIVEL:

Model	Size	Watts	Voltage	Dimmable	Lumens	CCT	Finish	Dimensions (LxWxH)
ASD-UCS-12D5CC-WH	12 inch	5 W	120 V	TRIAC	385 lm	2,700/3,000/4,000 K	White	12" x 3 7/8" x 1"
ASD-UCS-12D5CC-BZ	12 inch	5 W	120 V	TRIAC	385 lm	2,700/3,000/4,000 K	Oil Rubbed Bronze	12" x 3 7/8" x 1"
ASD-UCS-18D8CC-WH	18 inch	8 W	120 V	TRIAC	618 lm	2,700/3,000/4,000 K	White	18" x 3 7/8" x 1"
ASD-UCS-18D8CC-BZ	18 inch	8 W	120 V	TRIAC	618 lm	2,700/3,000/4,000 K	Oil Rubbed Bronze	18" x 3 7/8" x 1"
ASD-UCS-24D12CC-WH	24 inch	12 W	120 V	TRIAC	908 lm	2,700/3,000/4,000 K	White	24" x 3 7/8" x 1"
ASD-UCS-24D12CC-BZ	24 inch	12 W	120 V	TRIAC	908 lm	2,700/3,000/4,000 K	Oil Rubbed Bronze	24" x 3 7/8" x 1"
ASD-UCS-32D16CC-WH	32 inch	16 W	120 V	TRIAC	1,180 lm	2,700/3,000/4,000 K	White	31 7/8" x 3 7/8" x 1"
ASD-UCS-40D20CC-WH	40 inch	20 W	120 V	TRIAC	1,509 lm	2,700/3,000/4,000 K	White	40 1/8" x 3 7/8" x 1"

For most up-to-date spec sheets please refer to asd-lighting.com

ASD LIGHTING CORP

E-mail: orders@asd-lighting.com | Web site: www.asd-lighting.com





LED UNDER CABINET SWIVEL

Color Adjustable

PRODUCT SPECIFICATIONS:

Construction & Materials				
Housing	Aluminum			
Lens	Plastic			
Finish Color	White, Oil Rubbed Bronze			
Weight	ASD-UCS-12D5CC-WH	1.7 lb (0.8 kg)	ASD-UCS-24D12CC-WH	2.5 lb (1.2 kg)
	ASD-UCS-12D5CC-BZ		ASD-UCS-24D12CC-BZ	
	ASD-UCS-18D8CC-WH	2.1 lb (1 kg)	ASD-UCS-32D16CC-WH	3.2 lb (1.5 kg)
	ASD-UCS-18D8CC-BZ		ASD-UCS-40D20CC-WH	
Environmental System				
Work Environment	Suitable for Damp Locations			
Operating Temperature	-4°F to 113°F (-20°C to 45°C)			
L-70 Life	> 50,000 hrs			
Optical System				
Luminous Flux	ASD-UCS-12D5CC-WH	385 lm	ASD-UCS-24D12CC-WH	908 lm
	ASD-UCS-12D5CC-BZ		ASD-UCS-24D12CC-BZ	
	ASD-UCS-18D8CC-WH	618 lm	ASD-UCS-32D16CC-WH	1,180 lm
	ASD-UCS-18D8CC-BZ		ASD-UCS-40D20CC-WH	
Color Temperature	2,700/3,000/4,000 K			
CRI	> 90			
Electrical System				
Input Voltage	120 V			
Max input current	ASD-UCS-12D5CC-WH	0.1 A	ASD-UCS-24D12CC-WH	0.15 A
	ASD-UCS-12D5CC-BZ		ASD-UCS-24D12CC-BZ	
	ASD-UCS-18D8CC-WH	0.15 A	ASD-UCS-32D16CC-WH	
	ASD-UCS-18D8CC-BZ		ASD-UCS-40D20CC-WH	
Inrush current (Action time)	ASD-UCS-12D5CC-WH	0.1 A (0.5 S)	ASD-UCS-24D12CC-WH	0.15 A (0.5 S)
	ASD-UCS-12D5CC-BZ		ASD-UCS-24D12CC-BZ	
	ASD-UCS-18D8CC-WH	0.15 A (0.5 S)	ASD-UCS-32D16CC-WH	
	ASD-UCS-18D8CC-BZ		ASD-UCS-40D20CC-WH	
AC input range	min 108 V max 132 V			
Off State Power	0 W			
Power Consumption	ASD-UCS-12D5CC-WH	5 W	ASD-UCS-24D12CC-WH	12 W
	ASD-UCS-12D5CC-BZ		ASD-UCS-24D12CC-BZ	
	ASD-UCS-18D8CC-WH	12 W	ASD-UCS-32D16CC-WH	
	ASD-UCS-18D8CC-BZ		ASD-UCS-40D20CC-WH	
Power Factor	> 0.9			
Max output current	ASD-UCS-12D5CC-WH	27 mA	ASD-UCS-24D12CC-WH	42 mA
	ASD-UCS-12D5CC-BZ		ASD-UCS-24D12CC-BZ	
	ASD-UCS-18D8CC-WH	42 mA	ASD-UCS-32D16CC-WH	
	ASD-UCS-18D8CC-BZ		ASD-UCS-40D20CC-WH	
LED Driver Class	DOB			

Dimming range

10-100%

Dimming compatible controls

Brand	Lutron		
Models	DV-603PG-WH	DV-600P	MACL-153M
	DVCL-153P	DVL-600P	PD-6WCL-WH

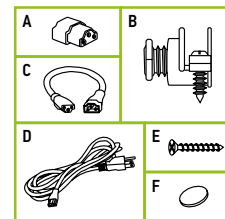
Regular and Voluntary Certifications

5-year limited warranty
 cETLus certified
 Energy Star listed

Model	Linkable Quantities (pcs)
ASD-UCS-12D5CC-WH	40
ASD-UCS-12D5CC-BZ	40
ASD-UCS-18D8CC-WH	25
ASD-UCS-18D8CC-BZ	25
ASD-UCS-24D12CC-WH	16
ASD-UCS-24D12CC-BZ	16
ASD-UCS-32D16CC-WH	12
ASD-UCS-40D20CC-WH	10

PACKAGE CONTENTS:

Description	Q-ty
LED Under Cabinet Swivel	1
End-to-End Connector (A)	1
Romex Connection Kit (B)	1
6" Linking cord (C)	1
6 ft Power cord (D)	1
Screws (E)	2
Screw caps (F)	2
Box	1
Cut sheet	2



For most up-to-date spec sheets please refer to asd-lighting.com

ASD LIGHTING CORP

E-mail: orders@asd-lighting.com | Web site: www.asd-lighting.com





LED UNDER CABINET SWIVEL

Color Adjustable

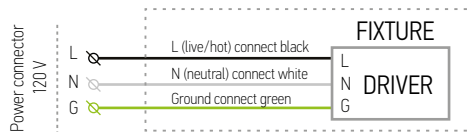
INSTALLATION GUIDE

IMPORTANT SAFETY INFORMATION:

Please read all the instructions below before installation.

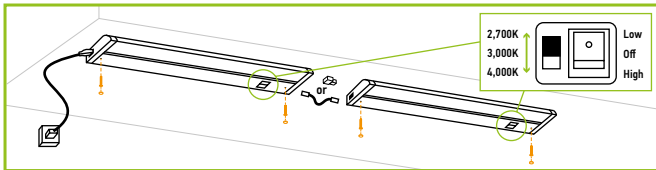
- ▶ Make sure that the supply voltage corresponds to the rated product voltage.
- ▶ The product must be installed by a qualified electrician in accordance with the National Electrical Code and corresponding local codes.
- ▶ If the product is damaged, do not use it.

ELECTRICAL SCHEMATIC DIAGRAM:



PLUG-IN INSTALLATION:

1. Attach the fixture to the surface using 2 screws.
2. Multiple fixtures can be linked together with the end to end connector or linking cord.
3. Choose needed color temperature and lighting mode using the switch.



⚠ WARNING

RISK OF PERSONAL INJURY – READ and follow all WARNINGS and installation instructions.

Keep or give to the owner for future reference.

Risk of cuts: Wear gloves to prevent cuts or abrasions when removing from carton, handling, installing, and maintaining this product.

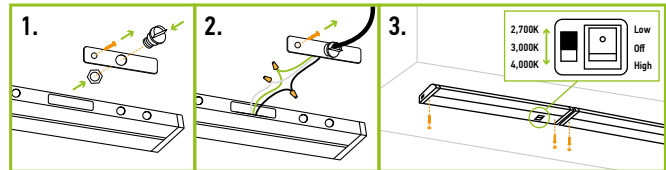
Risk of electric shock: This product must be installed in accordance with the applicable installation code by a person familiar with the construction and operation of the product and the hazards involved.

Risk of Fire: Minimum 194°F supply conductors. Consult a qualified electrician to ensure correct branch circuit conductor.

ASD® assumes no responsibility for claims arising out of improper or careless installation or handling of this product.

HARDWIRE INSTALLATION:

1. Remove the knock-out. Dismount adapter plate by loosening screw. Insert the romex connector into the open hole and secure it with the wire nut.
2. Connect the wires: Black to Black, White to White, Green to Green using quick connectors. Tuck all the wires into the fixture and reattach the adapter plate by tightening the screw.
3. Attach the fixture to the surface using 2 screws. Multiple fixtures can be linked together with the end to end connector or linking cord. Choose needed color temperature and lighting mode using the switch.



ORDERING INFORMATION

LED UNDER CABINET SWIVEL:

Model	Size	Watts	Lumens	Finish	UPC			
ASD-UCS-12D5CC-WH	12 inch	5 W	385 lm	White	810050731102			
ASD-UCS-12D5CC-BZ	12 inch	5 W	385 lm	Oil Rubbed Bronze	810050731119			
ASD-UCS-18D8CC-WH	18 inch	8 W	618 lm	White	810050731126			
ASD-UCS-18D8CC-BZ	18 inch	8 W	618 lm	Oil Rubbed Bronze	810050731133			
ASD-UCS-24D12CC-WH	24 inch	12 W	908 lm	White	810050731140			
ASD-UCS-24D12CC-BZ	24 inch	12 W	908 lm	Oil Rubbed Bronze	810050731157			
ASD-UCS-32D16CC-WH	32 inch	16 W	1,180 lm	White	810050733557			
ASD-UCS-40D20CC-WH	40 inch	20 W	1,509 lm	White	810050733564			
Model	Pcs in middle box	Middle box Size	Middle box Weight	GTIN 14 for Middle box	Pcs. per Carton	Carton Size	Carton Weight	GTIN 14 for Carton
ASD-UCS-12D5CC-WH	-	-	-	-	20	17.3" x 15.6" x 8.5"	38.8 lb	30810050731103
ASD-UCS-12D5CC-BZ	4	17.3" x 6.5" x 4.5"	7.8 lb	10810050731116	16	18.1" x 14" x 10.4"	31 lb	30810050731110
ASD-UCS-18D8CC-WH	-	-	-	-	20	23.2" x 15.6" x 8.5"	47.6 lb	30810050731127
ASD-UCS-18D8CC-BZ	4	23.2" x 6.5" x 4.5"	9.5 lb	10810050731130	16	24" x 14" x 10.4"	38.1 lb	30810050731134
ASD-UCS-24D12CC-WH	-	-	-	-	20	29.3" x 15.6" x 8.5"	58.6 lb	30810050731141
ASD-UCS-24D12CC-BZ	4	29.3" x 6.5" x 4.5"	11.7 lb	10810050731154	16	30.1" x 14" x 10.4"	46.9 lb	30810050731158
ASD-UCS-32D16CC-WH	4	37.2" x 3.3" x 8.5"	14.4 lb	30810050733558	12	38" x 12" x 9.3"	43.1 lb	40810050733555
ASD-UCS-40D20CC-WH	4	45.3" x 3.3" x 8.5"	17.5 lb	30810050733565	12	46.1" x 12" x 9.3"	52.4 lb	40810050733562

ACCESSORIES:

Model	Description	Finish	Materials	Dimensions	Weight	Pcs. per Carton	Carton Size	Carton Weight	UPC
ASD-PCD-UCS-10pack	Power Cord 6 ft	White	Plastic + Copper	72"	0.3 lb	10	11.8" x 9.8"	3.3 lb	810050733731
ASD-LCD-UCS-10pack	Linking Cord 6"	White	Plastic + Copper	6"	0.04 lb	10	11.8" x 9.8"	0.4 lb	810050733748
ASD-RCR-UCS-10pack	Romex Connector	Nickel	Plastic + Copper	1 1/8" x 13/16"	0.1 lb	10	5.9" x 3.5"	0.7 lb	810050733755
ASD-ECR-UCS-10pack	End-to-end Connector	White	Plastic + Copper	7/8" x 11/16" x 7/16"	0.02 lb	10	5.9" x 3.5"	0.3 lb	810050733762

For most up-to-date spec sheets please refer to asd-lighting.com