



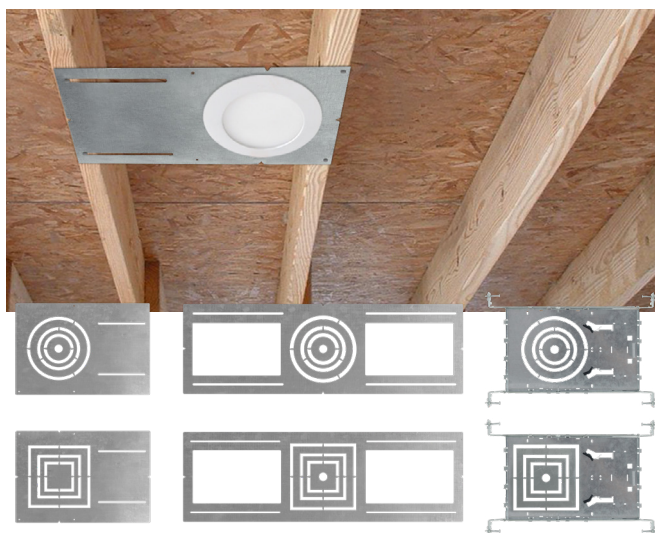
NEW CONSTRUCTION MOUNTING PLATE

► **DESIGN & OPTIONS** - NEW CONSTRUCTION MOUNTING PLATE is a universal and handy solution for new construction. This durable fixture is the best choice for any ceiling space. Included mounting holes and tracks mean these plates will fit perfectly in many different structural layouts. Alignment notches on the plate help to align multiple plates. It has a multipurpose design that allows you to accommodate a range of 3", 4", and 6" LED recessed lights.

► **INSTALLATION** - Installation is quick and easy. Just adjust the mounting plate position and fix it with screws or nails. You can also secure the J-box position. Remove the metal template of the needed size and install your light. Refer to install instructions for detailed steps.

► **APPLICATION** - This NEW CONSTRUCTION MOUNTING PLATE is a great solution for both residential and commercial projects. It is perfect for installing LED recessed lighting kits into newly constructed or remodeled homes.

Catalog number	
Notes	
Type	



Model	Cut hole size	Dimensions (LxW)	UPC
MPL ASYMMETRIC HOLE			
ASD-MPLR-346-FA	Round 3-4-6"	13-1/4" x 9-1/16" x 1/16"	810050733854
ASD-MPLR-346-FA-6PACK	Round 3-4-6"	13-1/4" x 9-1/16" x 1/16"	810050739344
ASD-MPLS-346-FA	Square 3-4-6"	13-1/4" x 9-1/16" x 1/16"	810050733861
MPL SYMMETRIC HOLE			
ASD-MPLR-346-FS	Round 3-4-6"	26" x 8-1/4" x 1/16"	810050733878
ASD-MPLR-346-FS-6PACK	Round 3-4-6"	26" x 8-1/4" x 1/16"	810050739351
ASD-MPLS-346-FS	Square 3-4-6"	26" x 8-1/4" x 1/16"	810050733885
MPL SLIDING CLIPS			
ASD-MPLR-346-SC	Round 3-4-6"	14-3/8" x 10-9/16" x 1-5/8"	810050731577
ASD-MPLR-346-SC-6PACK	Round 3-4-6"	14-3/8" x 10-9/16" x 1-5/8"	810050739337
ASD-MPLS-346-SC	Square 3-4-6"	14-3/8" x 10-9/16" x 1-5/8"	810050731843

PRODUCT SPECIFICATIONS:

Construction & Materials		
Housing	Iron	
Weight	ASD-MPLR-346-FA	0.9 lb (0.4 kg)
	ASD-MPLR-346-FA-6PACK	5.3 lb (2.4 kg)
	ASD-MPLS-346-FA	0.9 lb (0.4 kg)
	ASD-MPLR-346-FS	1 lb (0.5 kg)
	ASD-MPLR-346-FS-6PACK	5.9 lb (2.7 kg)
	ASD-MPLS-346-FS	1 lb (0.5 kg)
	ASD-MPLR-346-SC	1.1 lb (0.5 kg)
	ASD-MPLR-346-SC-6PACK	3 lb (6.7 kg)
ASD-MPLS-346-SC	1.1 lb (0.5 kg)	
Environmental system		
Work environment	Suitable for Dry Locations	
Regular and voluntary certifications		
5-year limited warranty		

PACKAGE CONTENTS:

Description	Q-ty
New Construction Mounting Plate	1 (6 for 6pack)
Box	1

ORDERING INFORMATION

Model	Pcs. in middle box	Middle box size	Middle box weight	GTIN 14 in middle box	Pcs. per carton	Carton size	Carton weight	GTIN 14 in carton
MPL ASYMMETRIC HOLE								
ASD-MPLR-346-FA	6	9.3" x 0.6" x 13.6"	5.6 lb	10810050733851	24	14.4" x 9.8" x 3.1"	22.5 lb	20810050733858
ASD-MPLR-346-FA-6PACK	-	-	-	-	4	14.4" x 9.8" x 3.2"	22.5 lb	10810050739341
ASD-MPLS-346-FA	6	9.3" x 0.6" x 13.6"	5.5 lb	10810050733868	24	14.4" x 9.8" x 3.1"	22.9 lb	20810050733865
MPL SYMMETRIC HOLE								
ASD-MPLR-346-FS	6	8.5" x 0.6" x 26.4"	6.1 lb	10810050733875	24	27.2" x 9.1" x 3.1"	25.2 lb	20810050733872
ASD-MPLR-346-FS-6PACK	-	-	-	-	4	27.2" x 9.1" x 3.2"	25.2 lb	10810050739358
ASD-MPLS-346-FS	6	8.5" x 0.6" x 26.4"	6 lb	10810050733882	24	26" x 8.3" x 3.1"	24.6 lb	20810050733889
MPL SLIDING CLIPS								
ASD-MPLR-346-SC	6	15" x 11.2" x 7.5"	7.7 lb	10810050731574	12	23.2" x 15.6" x 8.3"	17 lb	20810050731571
ASD-MPLR-346-SC-6PACK	-	-	-	-	2	23.2" x 15.6" x 8.3"	17 lb	10810050739334
ASD-MPLS-346-SC	6	15" x 11.2" x 7.5"	7.5 lb	10810050731840	12	23.2" x 15.6" x 8.3"	16.4 lb	20810050731847

For most up-to-date spec sheets please refer to asd-lighting.com

ASD LIGHTING CORP

E-mail: orders@asd-lighting.com | Web site: www.asd-lighting.com



NEW CONSTRUCTION MOUNTING PLATE

INSTALLATION GUIDE

IMPORTANT SAFETY INFORMATION:

Please read all the instructions below before installation.

- ▶ The product must be installed by a qualified electrician in accordance with the National Electrical Code and corresponding local codes.
- ▶ If the product is damaged, do not use it.

⚠ WARNING

RISK OF PERSONAL INJURY – READ and follow all WARNINGS and installation instructions.

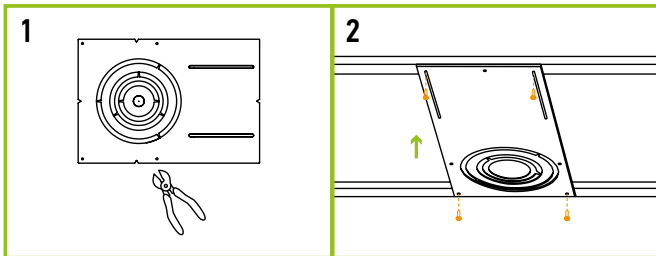
Keep or give to the owner for future reference.

Risk of cuts: Wear gloves to prevent cuts or abrasions when removing from carton, handling, installing, and maintaining this product.

ASD® assumes no responsibility for claims arising out of improper or careless installation or handling of this product.

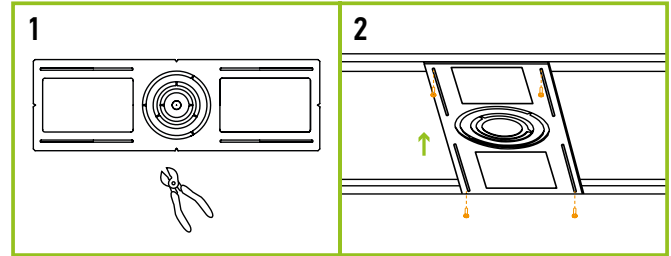
MOUNTING PLATE WITH ASYMMETRIC HOLES INSTALLATION:

1. Remove the metal ring from the mounting plate according to the size of fixture.
2. Place the mounting plate and secure its position with the screws on the beams.



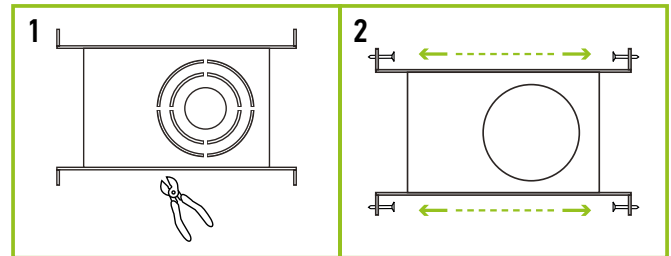
MOUNTING PLATE WITH SYMMETRIC HOLES INSTALLATION:

1. Remove the metal ring from the mounting plate according to the size of fixture.
2. Place the mounting plate and secure its position with the screws on the beams.



MOUNTING PLATE WITH SLIDING CLIPS INSTALLATION:

1. Remove the metal ring from the mounting plate according to the size of fixture.
2. Adjust the sliding clips, and fix them with nails on each end.



For most up-to-date spec sheets please refer to asd-lighting.com