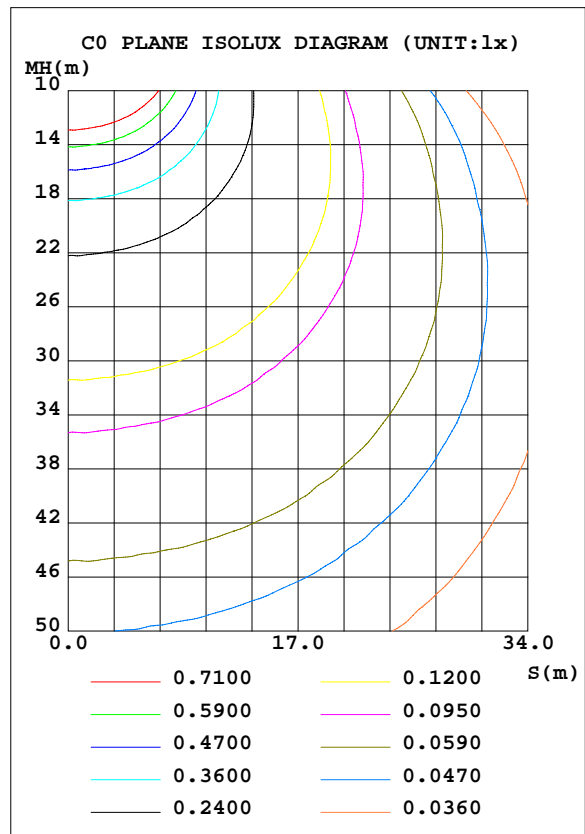
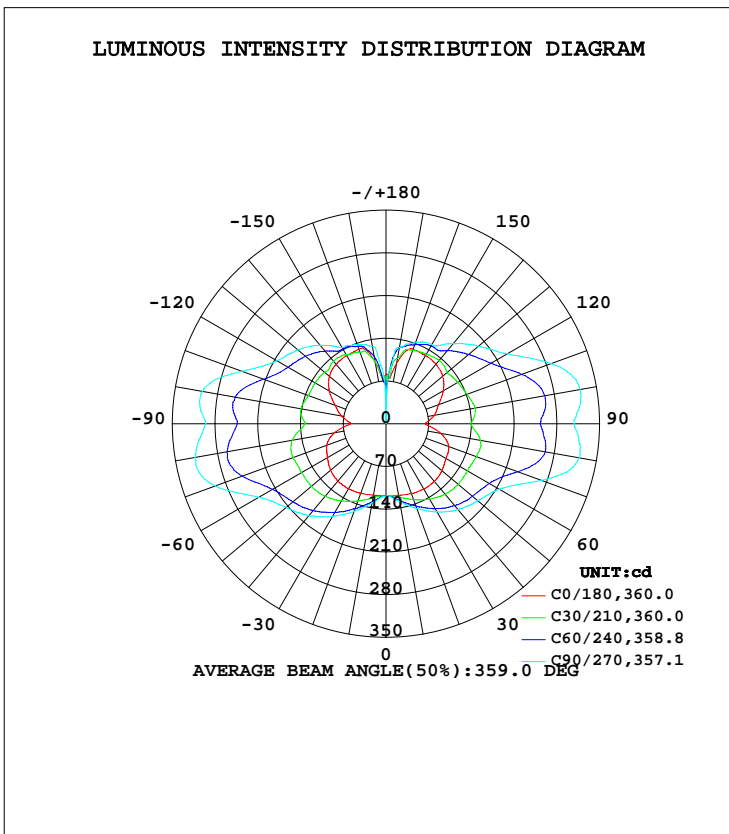


LUMINAIRE PHOTOMETRIC TEST REPORT

Test:U:277.00V I:0.1020A P:24.920W PF:0.8824 Freq:60.00Hz Lamp Flux:2134.28x1 lm		
NAME:	TYPE:LED	WEIGHT:
SPEC.:	DIM.:	SERIAL No.:
MFR.: ASD Lighting corp	SUR.:	Shielding Angle:

DATA OF LAMP		PHOTOMETRIC DATA Eff: 85.65 lm/W			
MODEL	SD-LWS27-MV-24D24CC-BK	I <sub>max</sub> (cd)	323.3	S/MH(C0/180)	1.59
NOMINAL POWER(W)	24	LOR(%)	100.0	S/MH(C90/270)	2.32
RATED VOLTAGE(V)	120-277	TOTAL FLUX(lm)	2134.3	η UP, DN(C0-180)	24.6,25.5
NOMINAL FLUX(lm)	2134.28	CIE CLASS	DIFFUSE	η UP, DN(C180-360)	23.5,26.4
LAMPS INSIDE	1	η up(%)	48.0	CIBSE SHR NOM	2.00
TEST VOLTAGE(V)	277	η down(%)	52.0	CIBSE SHR MAX	2.00



C Range: 0 - 360DEG  
 C Interval: 15.0DEG  
 Test Speed: HIGH  
 Temperature: 25.0DEG  
 Operators: Alan Wang  
 Test Date: 08 May 2023

γ Range: 0 - 180DEG  
 γ Interval: 1.0DEG  
 Test System: EVERFINE GO-R5000\_V2 SYSTEM V2.00.416  
 Humidity: 43.5%  
 Test Distance: 2.500m [K=1.0390]  
 Remarks:

## ZONAL FLUX DIAGRAM

## ZONAL FLUX DIAGRAM:

$\gamma$	C0	C45	C90	C135	C180	C225	C270	C315	$\gamma$	$\Phi$ zone	$\Phi$ total	%lum,lamp
10	119.1	124.7	130.1	124.5	118.7	126.6	131.6	125.2	0- 10	11.62	11.62	0.54,0.54
20	121.8	138.6	148.1	137.1	121.1	142.0	152.7	139.8	10- 20	37.39	49.01	2.3,2.3
30	123.6	152.6	166.7	150.2	123.0	158.1	175.8	154.8	20- 30	67.06	116.1	5.44,5.44
40	123.5	164.3	183.9	161.1	122.9	171.4	196.9	167.5	30- 40	98.74	214.8	10.1,10.1
50	119.5	171.6	196.6	167.0	118.4	180.7	213.0	175.8	40- 50	128.7	343.5	16.1,16.1
60	113.7	175.5	214.5	169.8	110.6	187.7	240.8	180.4	50- 60	154.4	497.9	23.3,23.3
70	109.3	191.2	271.0	179.8	103.3	203.6	297.9	193.2	60- 70	183.5	681.4	31.9,31.9
80	91.37	208.0	321.2	190.4	85.57	207.9	317.7	195.0	70- 80	215.0	896.4	42,42
90	64.41	194.7	308.2	175.5	57.68	186.6	295.2	173.6	80- 90	212.5	1109	52,52
100	80.08	203.3	322.9	186.1	73.89	193.6	305.4	179.5	90-100	208.7	1318	61.7,61.7
110	91.65	186.7	288.1	175.5	88.47	173.7	251.6	160.7	100-110	198.8	1516	71,71
120	108.4	167.9	229.3	160.9	107.4	161.6	206.5	152.2	110-120	166.2	1683	78.8,78.8
130	121.0	155.1	197.8	149.9	120.8	153.4	188.4	145.9	120-130	140.4	1823	85.4,85.4
140	127.6	141.3	171.4	140.7	127.0	140.5	168.2	134.7	130-140	115.3	1938	90.8,90.8
150	129.4	141.5	150.5	139.6	129.1	138.3	144.2	136.1	140-150	88.08	2026	94.9,94.9
160	130.3	133.5	141.4	129.7	130.4	127.5	137.3	131.8	150-160	62.57	2089	97.9,97.9
170	100.6	119.5	127.2	111.7	102.4	104.7	128.7	125.2	160-170	36.00	2125	99.6,99.6
180	81.32	71.23	0	65.50	80.31	73.28	35.03	62.52	170-180	9.348	2134	100,100
DEG	LUMINOUS INTENSITY:cd									UNIT:lm		

Conical surface Flux(90deg): 275.69 lm

%lum = 12.9%

%lamp = 12.9%

Conical surface Flux(120deg): 497.86 lm

%lum = 23.3%

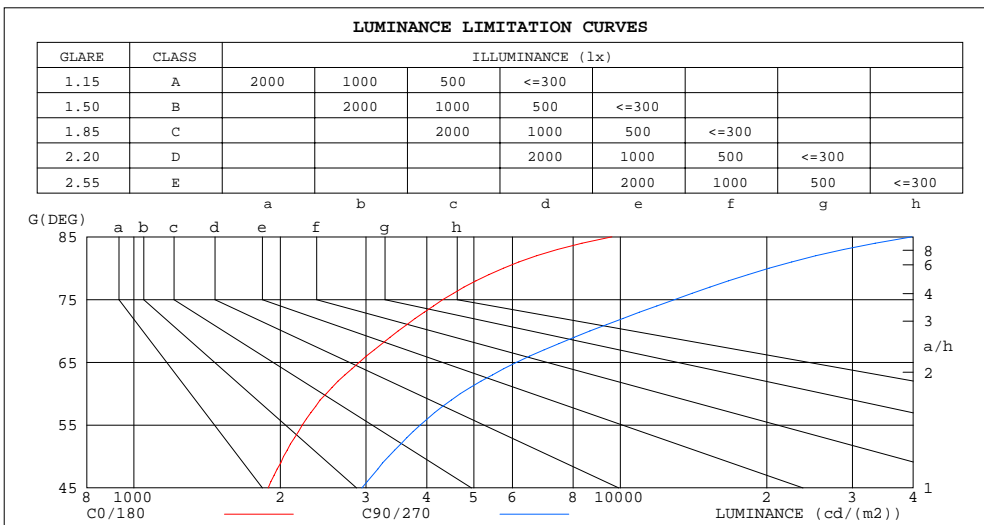
%lamp = 23.3%

C Range: 0 - 360DEG  
 C Interval: 15.0DEG  
 Test Speed: HIGH  
 Temperature: 25.0DEG  
 Operators: Alan Wang  
 Test Date: 08 May 2023

$\gamma$  Range: 0 - 180DEG  
 $\gamma$  Interval: 1.0DEG  
 Test System: EVERFINE GO-R5000\_V2 SYSTEM V2.00.416  
 Humidity: 43.5%  
 Test Distance: 2.500m [K=1.0390]  
 Remarks:

LUMINANCE LIMITATION CURVES

Test:U:277.00V I:0.1020A P:24.920W PF:0.8824 Freq:60.00Hz Lamp Flux:2134.28x1 lm		
NAME:	TYPE:LED	WEIGHT:
SPEC.:	DIM.:	SERIAL No.:
MFR.: ASD Lighting corp	SUR.:	Shielding Angle:



LUMINANCE cd/(m2)		
G(DEG)	C0/180	C90/270
85	9607	39770
80	5751	20215
75	4315	12943
70	3492	8659
65	2905	6122
60	2486	4689
55	2219	3880
50	2031	3342
45	1889	2941

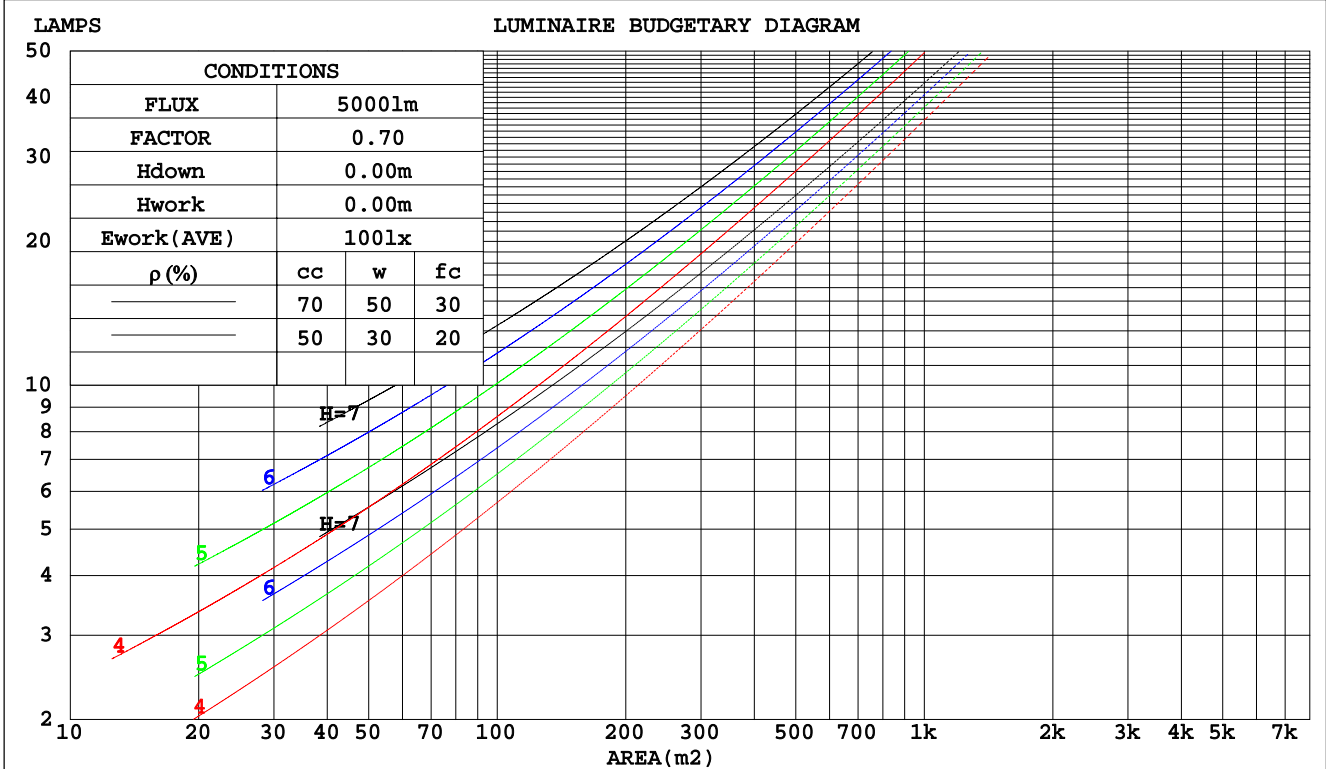
C Range: 0 - 360DEG  
 C Interval: 15.0DEG  
 Test Speed: HIGH  
 Temperature: 25.0DEG  
 Operators: Alan Wang  
 Test Date: 08 May 2023

$\gamma$  Range: 0 - 180DEG  
 $\gamma$  Interval: 1.0DEG  
 Test System: EVERFINE GO-R5000\_V2 SYSTEM V2.00.416  
 Humidity: 43.5%  
 Test Distance: 2.500m [K=1.0390]  
 Remarks:

CU AND LUMINAIRE BUDGETARY ESTIMATE DIAGRAM

Test:U:277.00V I:0.1020A P:24.920W PF:0.8824 Freq:60.00Hz Lamp Flux:2134.28x1 lm		
NAME:	TYPE:LED	WEIGHT:
SPEC.:	DIM.:	SERIAL No.:
MFR.: ASD Lighting corp	SUR.:	Shielding Angle:

pcc	80%			70%			50%			30%			10%			0
	50%	30%	10%	50%	30%	10%	50%	30%	10%	50%	30%	10%	50%	30%	10%	0
pw																
pfc	20%			20%			20%			20%			20%			0
RCR	RCR:Room Cavity Ratio						Coefficients of Utilization(CU)									
0.0	1.08	1.08	1.08	.00	.00	.00	.84	.84	.84	.71	.71	.71	.58	.58	.58	.52
1.0	.87	.81	.76	.80	.75	.70	.66	.63	.59	.54	.51	.49	.43	.41	.39	.33
2.0	.73	.65	.58	.67	.60	.53	.56	.50	.45	.45	.41	.37	.35	.32	.29	.24
3.0	.63	.53	.46	.57	.49	.43	.47	.41	.36	.38	.33	.29	.30	.26	.23	.18
4.0	.54	.45	.38	.50	.41	.35	.41	.35	.29	.33	.28	.24	.26	.22	.18	.15
5.0	.48	.38	.31	.44	.35	.29	.36	.30	.24	.29	.24	.20	.23	.19	.15	.12
6.0	.43	.33	.27	.39	.31	.25	.32	.26	.21	.26	.21	.17	.20	.16	.13	.10
7.0	.38	.29	.23	.35	.27	.21	.29	.23	.18	.24	.18	.14	.18	.14	.11	.08
8.0	.34	.26	.20	.32	.24	.18	.26	.20	.15	.21	.16	.13	.17	.13	.10	.07
9.0	.31	.23	.17	.29	.21	.16	.24	.18	.14	.20	.15	.11	.15	.11	.09	.06
10.0	.29	.21	.15	.26	.19	.14	.22	.16	.12	.18	.13	.10	.14	.10	.08	.06



C Range: 0 - 360DEG  
 C Interval: 15.0DEG  
 Test Speed: HIGH  
 Temperature: 25.0DEG  
 Operators: Alan Wang  
 Test Date: 08 May 2023

γ Range: 0 - 180DEG  
 γ Interval: 1.0DEG  
 Test System: EVERFINE GO-R5000\_V2 SYSTEM V2.00.416  
 Humidity: 43.5%  
 Test Distance: 2.500m [K=1.0390]  
 Remarks:

WEC AND CCEC

Test:U:277.00V I:0.1020A P:24.920W PF:0.8824 Freq:60.00Hz Lamp Flux:2134.28x1 lm		
NAME:	TYPE:LED	WEIGHT:
SPEC.:	DIM.:	SERIAL No.:
MFR.: ASD Lighting corp	SUR.:	Shielding Angle:

ρcc	80%			70%			50%			30%			10%			0
ρw	50%	30%	10%	50%	30%	10%	50%	30%	10%	50%	30%	10%	50%	30%	10%	0
ρfc	20%			20%			20%			20%			20%			0
RCR	RCR:Room Cavity Ratio						Wall Exitance Coefficients(WEC)									
0.0																
1.0	.418	.238	.075	.396	.226	.072	.355	.204	.065	.318	.183	.059	.283	.164	.053	
2.0	.348	.191	.058	.328	.181	.056	.290	.162	.050	.256	.144	.045	.224	.127	.040	
3.0	.303	.161	.048	.284	.152	.046	.250	.136	.041	.218	.120	.037	.189	.105	.032	
4.0	.269	.140	.041	.252	.132	.039	.221	.117	.035	.191	.103	.031	.164	.089	.027	
5.0	.242	.123	.036	.227	.116	.034	.198	.103	.030	.171	.090	.027	.146	.078	.023	
6.0	.220	.110	.032	.206	.104	.030	.180	.092	.027	.155	.080	.024	.131	.069	.021	
7.0	.202	.100	.028	.189	.094	.027	.165	.083	.024	.141	.073	.021	.120	.062	.018	
8.0	.187	.091	.026	.175	.086	.024	.152	.076	.022	.130	.066	.019	.110	.057	.016	
9.0	.173	.084	.023	.162	.079	.022	.141	.070	.020	.121	.061	.017	.102	.052	.015	
10.0	.162	.078	.022	.152	.073	.020	.132	.064	.018	.113	.056	.016	.095	.048	.014	

ρcc	80%			70%			50%			30%			10%			0
ρw	50%	30%	10%	50%	30%	10%	50%	30%	10%	50%	30%	10%	50%	30%	10%	0
ρfc	20%			20%			20%			20%			20%			0
RCR	RCR:Room Cavity Ratio						Ceiling Cavity Exitance Coefficients(CCEC)									
0.0	.557	.557	.557	.476	.476	.476	.325	.325	.325	.186	.186	.186	.060	.060	.060	
1.0	.557	.524	.495	.476	.450	.426	.326	.310	.295	.188	.179	.171	.060	.058	.055	
2.0	.551	.503	.463	.472	.433	.400	.324	.300	.279	.187	.174	.164	.060	.056	.053	
3.0	.544	.488	.443	.467	.421	.384	.320	.293	.270	.185	.171	.159	.059	.055	.052	
4.0	.537	.477	.431	.461	.412	.374	.317	.287	.263	.183	.168	.156	.059	.055	.051	
5.0	.529	.468	.422	.455	.405	.367	.313	.283	.259	.181	.166	.154	.058	.054	.051	
6.0	.522	.460	.416	.449	.399	.362	.310	.279	.256	.180	.164	.152	.058	.054	.050	
7.0	.515	.454	.411	.443	.394	.358	.306	.276	.254	.178	.163	.151	.057	.053	.050	
8.0	.509	.449	.408	.438	.389	.356	.303	.273	.252	.176	.161	.150	.057	.053	.050	
9.0	.503	.444	.405	.433	.386	.353	.300	.271	.251	.175	.160	.150	.057	.053	.050	
10.0	.497	.441	.403	.428	.383	.352	.297	.269	.250	.173	.159	.149	.056	.052	.049	

C Range: 0 - 360DEG  
 C Interval: 15.0DEG  
 Test Speed: HIGH  
 Temperature: 25.0DEG  
 Operators: Alan Wang  
 Test Date: 08 May 2023

γ Range: 0 - 180DEG  
 γ Interval: 1.0DEG  
 Test System: EVERFINE GO-R5000\_V2 SYSTEM V2.00.416  
 Humidity: 43.5%  
 Test Distance: 2.500m [K=1.0390]  
 Remarks:

UGR(Unified Glare Rating) Table

Test:U:277.00V I:0.1020A P:24.920W PF:0.8824 Freq:60.00Hz Lamp Flux:2134.28x1 lm										
NAME:					TYPE:LED			WEIGHT:		
SPEC.:					DIM.:			SERIAL No.:		
MFR.: ASD Lighting corp					SUR.:			Shielding Angle:		
ceiling/cavity	0.7	0.7	0.5	0.5	0.3	0.7	0.7	0.5	0.5	0.3
walls	0.5	0.3	0.5	0.3	0.3	0.5	0.3	0.5	0.3	0.3
working plane	0.2	0.2	0.2	0.2	0.2	0.2	0.2	0.2	0.2	0.2
Room dimensions	Viewed crosswise					Viewed endwise				
x = 2H y = 2H	12.3	13.4	13.1	14.3	15.4	14.9	16.0	15.8	16.9	18.0
3H	15.1	16.1	15.9	17.0	18.1	19.1	20.2	20.0	21.1	22.2
4H	16.5	17.5	17.4	18.4	19.6	21.7	22.6	22.6	23.6	24.7
6H	18.0	18.9	18.9	19.9	21.1	24.3	25.2	25.2	26.1	27.3
8H	18.8	19.7	19.7	20.6	21.8	25.7	26.5	26.6	27.5	28.7
12H	19.6	20.4	20.5	21.4	22.6	27.1	28.0	28.0	28.9	30.1
4H 2H	14.0	14.9	14.8	15.8	17.0	15.7	16.6	16.6	17.5	18.7
3H	16.9	17.7	17.8	18.6	19.8	20.1	20.9	21.0	21.8	23.1
4H	18.4	19.2	19.4	20.2	21.4	22.8	23.5	23.7	24.5	25.7
6H	20.0	20.7	21.0	21.7	23.0	25.6	26.3	26.5	27.2	28.5
8H	20.8	21.5	21.8	22.5	23.7	27.0	27.7	28.0	28.7	29.9
12H	21.7	22.3	22.7	23.3	24.5	28.6	29.2	29.6	30.2	31.5
8H 4H	20.0	20.7	21.0	21.7	22.9	23.2	23.8	24.1	24.8	26.1
6H	21.9	22.4	22.9	23.4	24.7	26.3	26.8	27.3	27.8	29.1
8H	22.8	23.3	23.8	24.3	25.6	28.0	28.5	29.0	29.5	30.8
12H	23.8	24.2	24.8	25.2	26.6	29.8	30.2	30.8	31.3	32.6
12H 4H	20.7	21.3	21.6	22.2	23.5	23.2	23.8	24.2	24.8	26.1
6H	22.7	23.2	23.7	24.2	25.5	26.4	26.9	27.4	27.9	29.2
8H	23.8	24.2	24.8	25.2	26.6	28.2	28.6	29.2	29.7	31.0
Variations with the observer position at spacings:										
S = 1.0H	+ 0.1 / - 0.1					+ 0.1 / - 0.1				
1.5H	+ 0.2 / - 0.2					+ 0.2 / - 0.3				
2.0H	+ 0.3 / - 0.4					+ 0.3 / - 0.4				

CIE Pub.117, 2134 lm Total Lamp Luminous Flux Corrected (8log(F/F0) = 2.6)  
 Area: 0.0915 m2

C Range: 0 - 360DEG  
 C Interval: 15.0DEG  
 Test Speed: HIGH  
 Temperature: 25.0DEG  
 Operators: Alan Wang  
 Test Date: 08 May 2023

γ Range: 0 - 180DEG  
 γ Interval: 1.0DEG  
 Test System: EVERFINE GO-R5000\_V2 SYSTEM V2.00.416  
 Humidity: 43.5%  
 Test Distance: 2.500m [K=1.0390]  
 Remarks:

UTILIZATION FACTORS TABLE

Test:U:277.00V I:0.1020A P:24.920W PF:0.8824 Freq:60.00Hz Lamp Flux:2134.28x1 lm		
NAME:	TYPE:LED	WEIGHT:
SPEC.:	DIM.:	SERIAL No.:
MFR.: ASD Lighting corp	SUR.:	Shielding Angle:

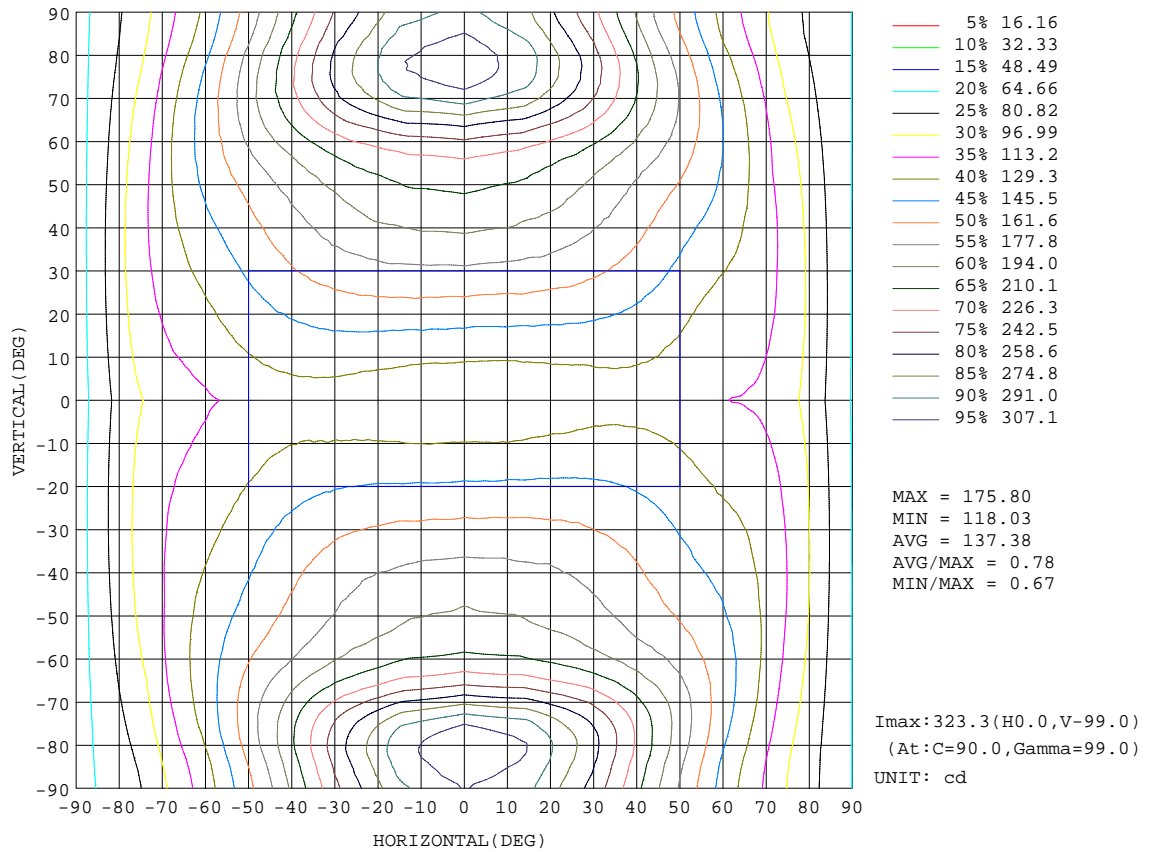
REFLECTANCE										
Ceiling	0.8	0.8	0.8	0.7	0.7	0.7	0.5	0.5	0.5	0
Walls	0.7	0.5	0.3	0.7	0.5	0.3	0.7	0.5	0.3	0
Working plane	0.2	0.2	0.2	0.2	0.2	0.2	0.2	0.2	0.2	0
ROOM INDEX	UTILIZATION FACTORS(PERCENT) $k(RI) \times RCR = 5$									
k = 0.60	36	24	16	34	23	16	31	21	15	7
0.80	45	31	22	42	29	21	37	26	19	10
1.00	52	37	28	48	35	27	42	33	24	13
1.25	59	44	35	55	42	33	47	37	29	16
1.50	64	50	40	59	47	38	51	41	34	18
2.00	72	59	49	66	55	46	57	47	40	22
2.50	77	65	55	71	60	52	60	52	45	25
3.00	81	70	61	75	65	57	63	56	49	28
4.00	86	76	68	79	71	64	67	61	55	32
5.00	90	81	74	83	75	69	70	64	59	34
ROOM INDEX	UF(total)									Direct
According to DIN EN 13032-2 2004			Suspended				SHRNOM = 1.25			

C Range: 0 - 360DEG  
 C Interval: 15.0DEG  
 Test Speed: HIGH  
 Temperature: 25.0DEG  
 Operators: Alan Wang  
 Test Date: 08 May 2023

$\gamma$  Range: 0 - 180DEG  
 $\gamma$  Interval: 1.0DEG  
 Test System: EVERFINE GO-R5000\_V2 SYSTEM V2.00.416  
 Humidity: 43.5%  
 Test Distance: 2.500m [K=1.0390]  
 Remarks:

ISOCANDELA DIAGRAM

Test:U:277.00V I:0.1020A P:24.920W PF:0.8824 Freq:60.00Hz Lamp Flux:2134.28x1 lm		
NAME:	TYPE:LED	WEIGHT:
SPEC.:	DIM.:	SERIAL No.:
MFR.: ASD Lighting corp	SUR.:	Shielding Angle:



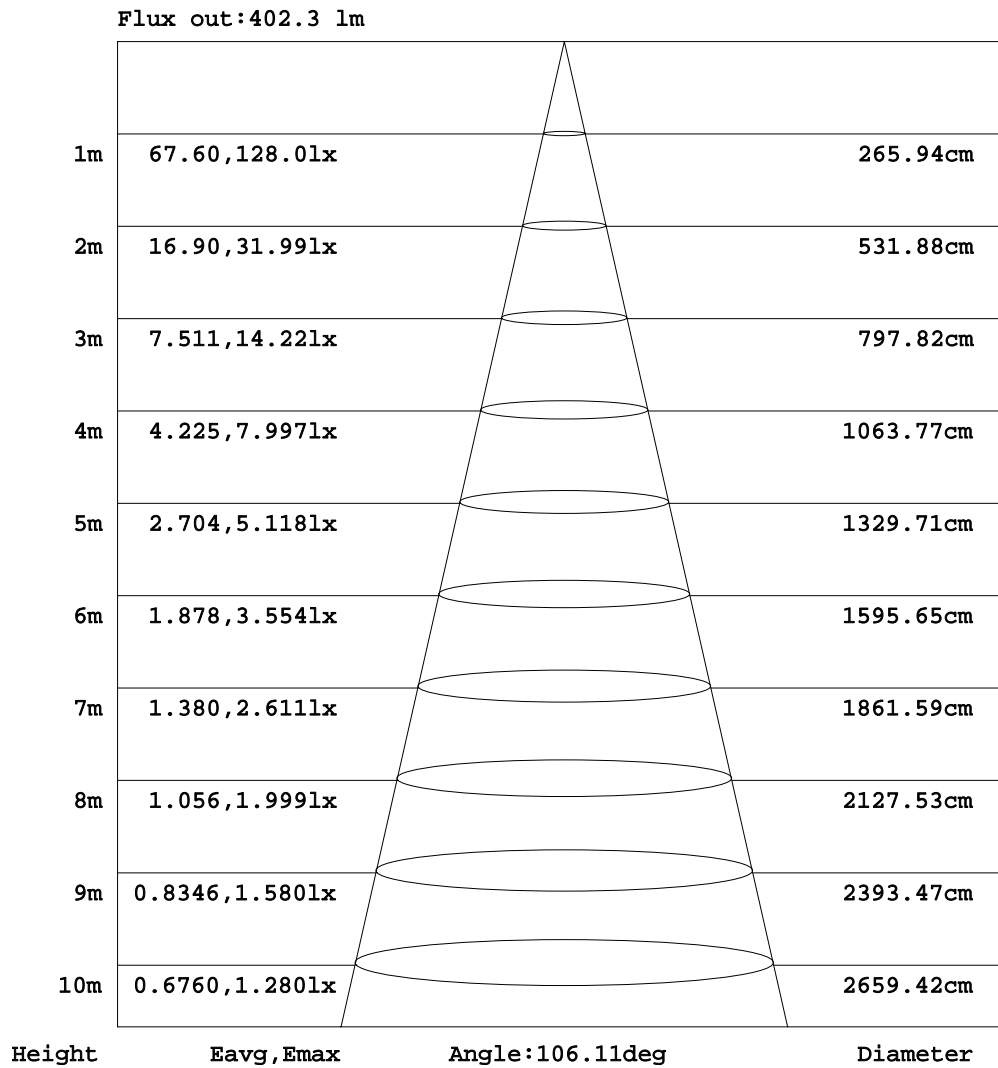
C Range: 0 - 360DEG  
 C Interval: 15.0DEG  
 Test Speed: HIGH  
 Temperature: 25.0DEG  
 Operators: Alan Wang  
 Test Date: 08 May 2023

γ Range: 0 - 180DEG  
 γ Interval: 1.0DEG  
 Test System: EVERFINE GO-R5000\_V2 SYSTEM V2.00.416  
 Humidity: 43.5%  
 Test Distance: 2.500m [K=1.0390]  
 Remarks:



AAI Figure

Test:U:277.00V I:0.1020A P:24.920W PF:0.8824 Freq:60.00Hz Lamp Flux:2134.28x1 lm		
NAME:	TYPE:LED	WEIGHT:
SPEC.:	DIM.:	SERIAL No.:
MFR.: ASD Lighting corp	SUR.:	Shielding Angle:



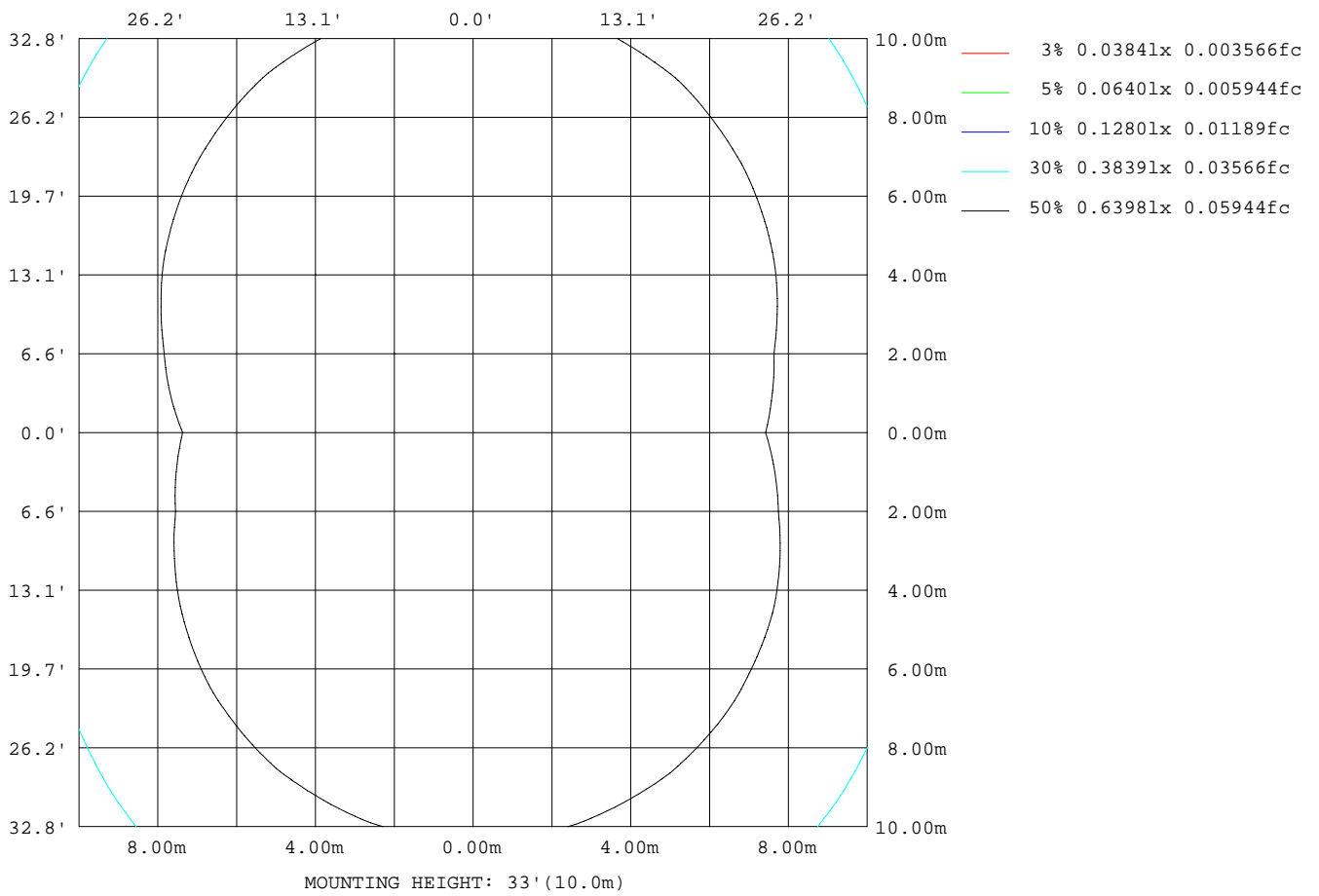
Note:The Curves indicate the illuminated area and the average illumination when the luminaire is at different distance.

C Range: 0 - 360DEG  
 C Interval: 15.0DEG  
 Test Speed: HIGH  
 Temperature: 25.0DEG  
 Operators:Alan Wang  
 Test Date:08 May 2023

γ Range: 0 - 180DEG  
 γ Interval: 1.0DEG  
 Test System:EVERFINE GO-R5000\_V2 SYSTEM V2.00.416  
 Humidity: 43.5%  
 Test Distance:2.500m [K=1.0390]  
 Remarks:

ISOLUX DIAGRAM

Test:U:277.00V I:0.1020A P:24.920W PF:0.8824 Freq:60.00Hz Lamp Flux:2134.28x1 lm		
NAME:	TYPE:LED	WEIGHT:
SPEC.:	DIM.:	SERIAL No.:
MFR.: ASD Lighting corp	SUR.:	Shielding Angle:



C Range: 0 - 360DEG  
 C Interval: 15.0DEG  
 Test Speed: HIGH  
 Temperature: 25.0DEG  
 Operators: Alan Wang  
 Test Date: 08 May 2023

γ Range: 0 - 180DEG  
 γ Interval: 1.0DEG  
 Test System: EVERFINE GO-R5000\_V2 SYSTEM V2.00.416  
 Humidity: 43.5%  
 Test Distance: 2.500m [K=1.0390]  
 Remarks:

## LED Avg.L Report

Test:U:277.00V I:0.1020A P:24.920W PF:0.8824 Freq:60.00Hz Lamp Flux:2134.28x1 lm		
NAME:	TYPE:LED	WEIGHT:
SPEC.:	DIM.:	SERIAL No.:
MFR.: ASD Lighting corp	SUR.:	Shielding Angle:

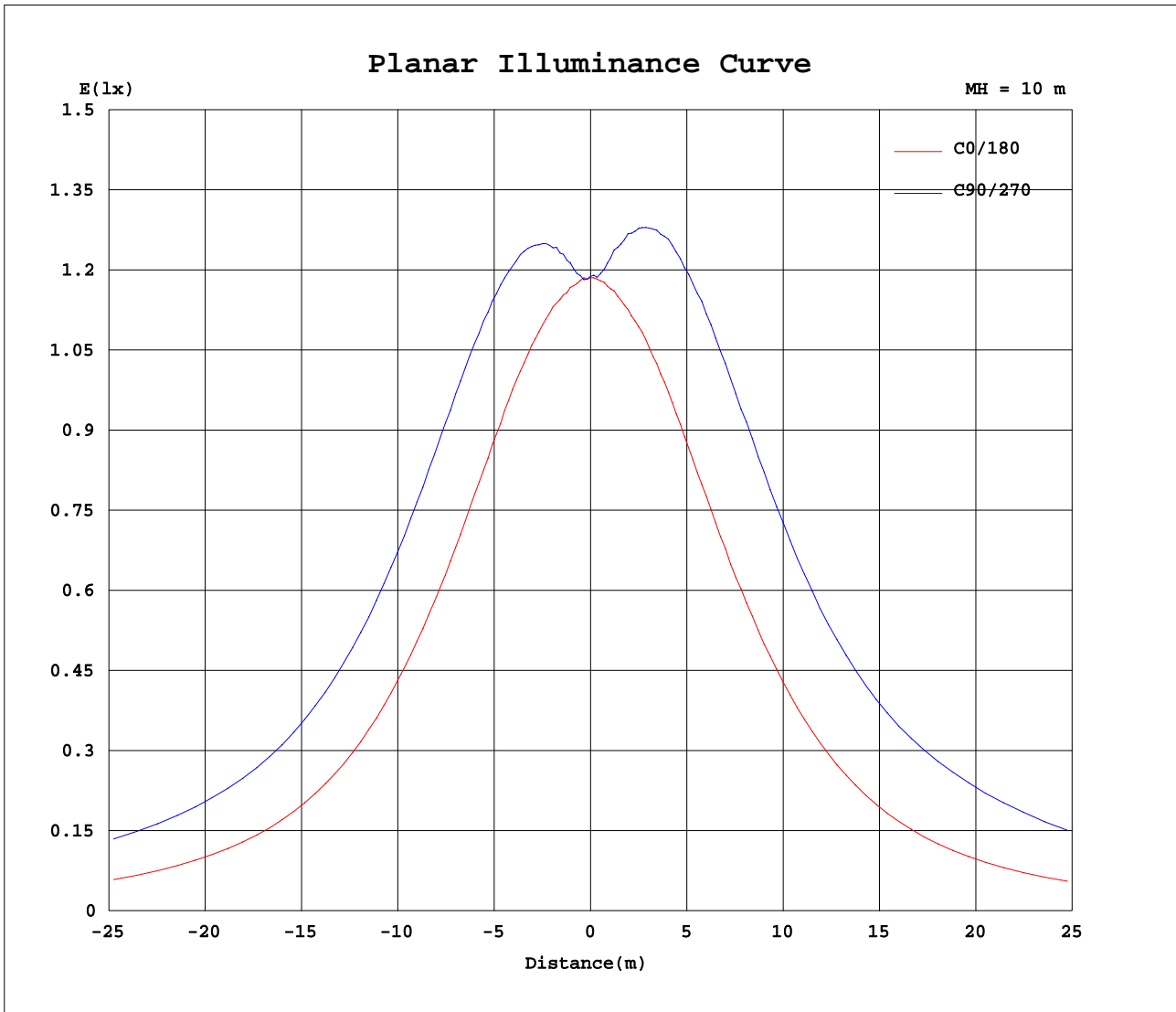
AvgL	cd/m2
L_0~180(65)av	2839
L_0~180(75)av	4187
L_0~180(85)av	9263
L_90~270(65)av	6526
L_90~270(75)av	13139
L_90~270(85)av	39166
L_45(65)av	4742
L_45(75)av	8433
L_45(85)av	24031

Standard: GB/T 29293-2012

C Range: 0 - 360DEG  
C Interval: 15.0DEG  
Test Speed: HIGH  
Temperature: 25.0DEG  
Operators: Alan Wang  
Test Date: 08 May 2023

$\gamma$  Range: 0 - 180DEG  
 $\gamma$  Interval: 1.0DEG  
Test System: EVERFINE GO-R5000\_V2 SYSTEM V2.00.416  
Humidity: 43.5%  
Test Distance: 2.500m [K=1.0390]  
Remarks:

Planar Illuminance Curve



C Range: 0 - 360DEG  
 C Interval: 15.0DEG  
 Test Speed: HIGH  
 Temperature: 25.0DEG  
 Operators: Alan Wang  
 Test Date: 08 May 2023

$\gamma$  Range: 0 - 180DEG  
 $\gamma$  Interval: 1.0DEG  
 Test System: EVERFINE GO-R5000\_V2 SYSTEM V2.00.416  
 Humidity: 43.5%  
 Test Distance: 2.500m [K=1.0390]  
 Remarks:

LUMINOUS DISTRIBUTION INTENSITY DATA

Test:U:277.00V I:0.1020A P:24.920W PF:0.8824 Freq:60.00Hz Lamp Flux:2134.28x1 lm		
NAME:	TYPE:LED	WEIGHT:
SPEC.:	DIM.:	SERIAL No.:
MFR.: ASD Lighting corp	SUR.:	Shielding Angle:

Table--1

UNIT: cd

C(DEG) γ (DEG)	0	15	30	45	60	75	90	105	120	135	150	165	180	195	210	225	240	255	270
0	119	119	118	118	119	119	119	119	119	118	118	118	119	119	118	118	119	119	119
5	118	118	118	120	120	121	122	122	121	120	118	118	118	119	119	121	122	123	123
10	119	119	122	125	128	129	130	129	127	124	121	119	119	120	123	127	130	131	132
15	120	122	127	131	135	138	138	137	135	130	126	121	120	123	129	133	139	141	142
20	122	125	132	139	144	147	148	146	142	137	130	123	121	126	135	142	148	151	153
25	123	128	138	146	152	156	157	155	151	144	135	126	122	130	140	150	158	163	164
30	124	131	143	153	161	165	167	164	159	150	140	128	123	133	146	158	168	174	176
35	124	134	147	159	169	174	176	173	167	156	144	130	123	135	151	165	177	184	186
40	124	135	151	164	175	181	184	181	173	161	147	131	123	137	155	171	186	194	197
45	122	136	153	168	180	188	190	187	178	165	148	131	121	138	158	177	193	202	206
50	119	136	154	172	185	193	197	193	183	167	149	130	118	137	159	181	199	210	213
55	116	134	155	173	189	200	204	198	186	168	148	128	115	135	160	184	205	219	224
60	114	133	155	175	196	210	215	208	191	170	147	125	111	133	160	188	215	235	241
65	112	132	156	180	208	229	237	226	202	173	146	123	107	131	160	194	231	258	268
70	109	132	158	191	230	260	271	255	220	180	147	120	103	129	162	204	251	286	298
75	102	127	160	203	253	293	307	287	241	188	146	114	96.1	124	162	210	264	303	316
80	91.4	119	157	208	265	307	321	301	251	190	141	105	85.6	115	156	208	264	305	318
85	76.6	107	148	202	260	303	317	297	246	184	131	92.3	71.1	102	144	197	254	294	308
90	64.4	96.3	139	195	253	295	308	287	239	176	121	80.6	57.7	90.3	133	187	244	284	295
95	71.8	103	146	201	261	304	318	297	246	183	128	87.5	65.0	96.9	139	193	251	293	306
100	80.1	106	148	203	264	308	323	301	250	186	133	92.7	73.9	102	142	194	251	293	305
105	85.8	105	145	198	255	298	314	293	243	183	132	93.2	81.5	102	139	185	236	274	286
110	91.7	104	141	187	237	275	288	270	227	176	131	94.2	88.5	102	136	174	214	244	252
115	100	105	138	176	215	245	256	242	208	167	129	101	98.0	104	134	165	196	218	223
120	108	112	136	168	199	221	229	219	194	161	128	110	107	108	134	162	185	202	206
125	116	117	134	162	187	205	212	202	183	156	127	116	115	117	133	158	179	193	197
130	121	121	130	155	177	193	198	190	173	150	129	122	121	122	131	153	172	184	188
135	125	124	135	147	167	181	185	179	164	143	133	125	125	125	131	148	164	176	179
140	128	124	136	141	157	168	171	166	153	141	134	127	127	126	134	140	156	166	168
145	129	125	134	143	147	155	157	153	146	141	133	127	128	126	133	138	146	154	156
150	129	124	132	142	148	150	150	149	146	140	130	127	129	125	131	138	142	143	144
155	130	124	130	137	143	147	148	146	143	136	127	126	129	125	128	136	139	142	141
160	130	122	128	134	138	141	141	141	135	130	128	124	130	128	124	127	135	137	137
165	123	116	126	129	133	135	135	132	129	129	124	119	125	125	120	125	127	134	134
170	101	106	109	119	127	128	127	127	121	112	102	101	102	103	104	105	112	126	129
175	74.5	74.6	80.1	96.2	98.8	101	94.6	91.7	86.7	76.9	74.7	75.1	76.1	76.2	75.8	76.4	80.0	89.5	95.6
180	81.3	79.1	70.0	71.2	43.7	32.7	0.00	42.0	55.5	65.5	75.9	80.1	80.3	80.3	77.8	73.3	66.2	58.2	35.0

C Range: 0 - 360DEG  
 C Interval: 15.0DEG  
 Test Speed: HIGH  
 Temperature: 25.0DEG  
 Operators: Alan Wang  
 Test Date: 08 May 2023

γ Range: 0 - 180DEG  
 γ Interval: 1.0DEG  
 Test System: EVERFINE GO-R5000\_V2 SYSTEM V2.00.416  
 Humidity: 43.5%  
 Test Distance: 2.500m [K=1.0390]  
 Remarks:

LUMINOUS DISTRIBUTION INTENSITY DATA

Test:U:277.00V I:0.1020A P:24.920W PF:0.8824 Freq:60.00Hz Lamp Flux:2134.28x1 lm		
NAME:	TYPE:LED	WEIGHT:
SPEC.:	DIM.:	SERIAL No.:
MFR.: ASD Lighting corp	SUR.:	Shielding Angle:

Table--2

UNIT: cd

C( DEG) γ (DEG)	285	300	315	330	345														
0	119	119	118	118	118														
5	122	121	120	119	118														
10	131	129	125	122	119														
15	141	137	132	127	122														
20	151	146	140	132	124														
25	161	156	147	138	127														
30	172	165	155	142	130														
35	183	175	162	147	132														
40	192	182	168	151	133														
45	201	190	172	153	133														
50	208	195	176	154	132														
55	217	201	178	154	130														
60	230	209	180	154	128														
65	253	223	186	155	128														
70	280	241	193	155	126														
75	296	250	198	154	120														
80	298	251	195	147	111														
85	287	240	184	135	97.3														
90	277	230	174	124	85.5														
95	286	238	180	130	92.3														
100	284	236	179	132	96.3														
105	264	221	171	129	95.8														
110	235	200	161	125	95.1														
115	211	186	155	125	99.7														
120	197	177	152	125	106														
125	188	171	149	124	112														
130	181	166	146	124	118														
135	173	159	141	128	122														
140	163	150	135	129	123														
145	151	142	136	129	124														
150	143	141	136	127	124														
155	142	139	135	128	125														
160	137	136	132	128	125														
165	134	132	130	126	120														
170	128	128	125	116	114														
175	99.3	105	101	98.7	77.7														
180	30.3	38.7	62.5	70.0	74.0														

C Range: 0 - 360DEG  
 C Interval: 15.0DEG  
 Test Speed: HIGH  
 Temperature: 25.0DEG  
 Operators: Alan Wang  
 Test Date: 08 May 2023

γ Range: 0 - 180DEG  
 γ Interval: 1.0DEG  
 Test System: EVERFINE GO-R5000\_V2 SYSTEM V2.00.416  
 Humidity: 43.5%  
 Test Distance: 2.500m [K=1.0390]  
 Remarks: