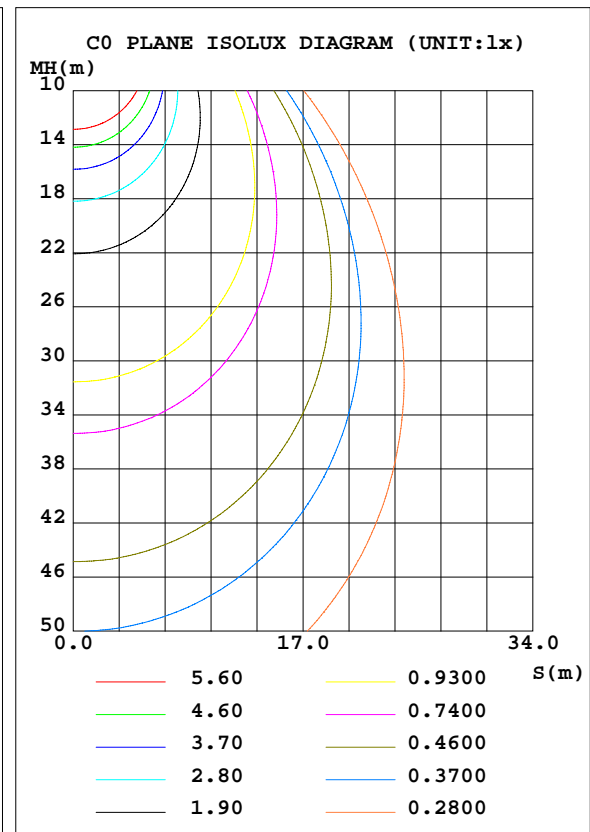
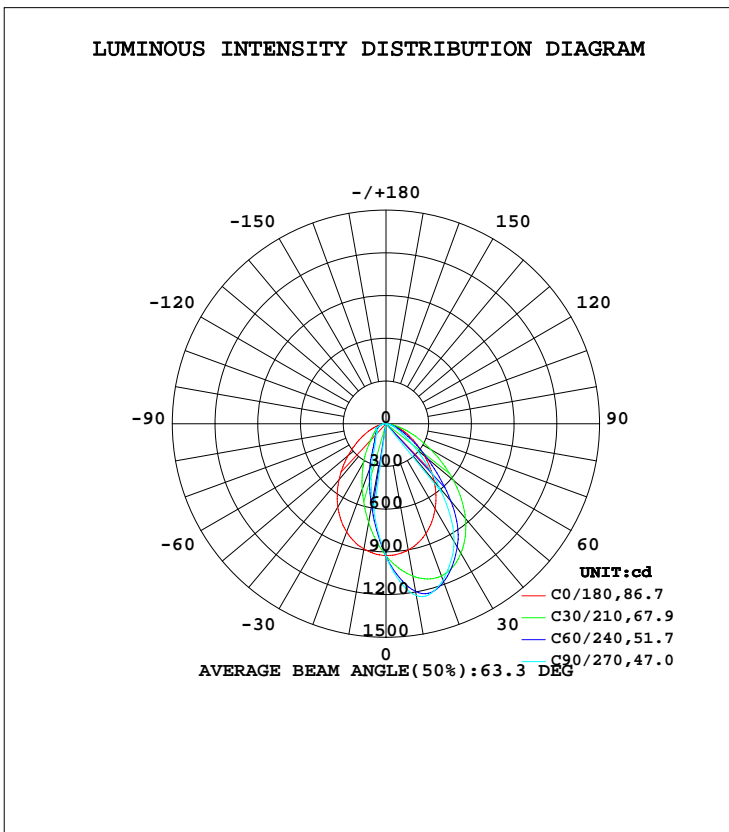


LUMINAIRE PHOTOMETRIC TEST REPORT

Test:U:120.00V I:0.1001A P:11.930W PF:0.9929 Freq:60.00Hz Lamp Flux:1686.88x1 lm		
NAME: ASD-WLP02A-12DAC-BK_4000K	TYPE: LED	WEIGHT:
SPEC.:	DIM.:	SERIAL No.:
MFR.: ASD Lighting Corp.	SUR.:	Shielding Angle:

DATA OF LAMP		PHOTOMETRIC DATA Eff: 141.40 lm/W			
MODEL	ASD-WLP02A-12DAC-BK	I _{max} (cd)	1242	S/MH(C0/180)	1.11
NOMINAL POWER(W)	12	LOR(%)	100.0	S/MH(C90/270)	0.42
RATED VOLTAGE(V)	120-277	TOTAL FLUX(lm)	1686.9	η UP, DN(C0-180)	0.0,73.0
NOMINAL FLUX(lm)	1686.88	CIE CLASS	DIRECT	η UP, DN(C180-360)	0.2,26.8
LAMPS INSIDE	1	η up(%)	0.2	CIBSE SHR NOM	0.75
TEST VOLTAGE(V)	120	η down(%)	99.8	CIBSE SHR MAX	0.95



C Range: 0 - 360DEG
 C Interval: 15.0DEG
 Test Speed: HIGH
 Temperature: 25.0DEG
 Operators: Alan Wang
 Test Date: 24 March 2022

γ Range: 0 - 180DEG
 γ Interval: 1.0DEG
 Test System: EVERFINE GO-R5000_V2 SYSTEM V2.00.416
 Humidity: 41.2%
 Test Distance: 2.500m [K=1.0477]
 Remarks:

ZONAL FLUX DIAGRAM

ZONAL FLUX DIAGRAM:

γ	C0	C45	C90	C135	C180	C225	C270	C315	γ	Φ zone	Φ total	%lum,lamp
10	901.0	1153	1225	1152	893.1	634.8	549.4	642.4	0- 10	87.03	87.03	5.16,5.16
20	820.5	1183	1169	1183	808.1	396.1	289.6	403.7	10- 20	237.7	324.7	19.2,19.2
30	691.4	1038	957.1	1042	676.6	220.1	151.6	225.9	20- 30	325.2	649.9	38.5,38.5
40	526.8	811.8	584.6	815.3	513.6	131.5	110.2	133.3	30- 40	342.4	992.3	58.8,58.8
50	355.0	513.4	274.2	521.7	348.1	93.57	81.54	94.27	40- 50	288.1	1280	75.9,75.9
60	211.6	267.8	123.7	274.4	207.2	70.49	77.77	71.35	50- 60	202.4	1483	87.9,87.9
70	107.6	118.5	54.68	122.2	105.6	50.74	55.93	50.63	60- 70	125.3	1608	95.3,95.3
80	36.57	34.62	14.59	35.75	37.48	24.33	27.16	24.51	70- 80	59.62	1668	98.9,98.9
90	1.862	0.7785	0.0314	0.5275	1.670	6.130	11.41	6.297	80- 90	15.37	1683	99.8,99.8
100	0.8259	0.0408	0.0405	0.0426	0.2890	0.1683	2.332	0.1799	90-100	1.868	1685	99.9,99.9
110	0.1982	0.0523	0.0480	0.0613	0.2110	0.2512	0.1821	0.2671	100-110	0.1939	1685	99.9,99.9
120	0.1707	0.0707	0.0636	0.0942	0.2967	0.3907	0.2935	0.3984	110-120	0.1767	1685	99.9,99.9
130	0.2582	0.1145	0.0870	0.1551	0.4452	0.6350	0.5930	0.6141	120-130	0.2584	1686	99.9,99.9
140	0.3634	0.2094	0.1522	0.2561	0.5802	0.8281	0.8839	0.7876	130-140	0.3392	1686	99.9,99.9
150	0.4643	0.3670	0.2740	0.3869	0.7110	0.9088	1.060	0.9020	140-150	0.3582	1686	100,100
160	0.6109	0.5581	0.4453	0.5457	0.8459	0.9113	1.042	0.9279	150-160	0.3172	1687	100,100
170	0.7082	0.7067	0.6118	0.6351	0.9011	0.8458	0.8173	0.7783	160-170	0.2129	1687	100,100
180	0.8784	0.8078	0.7053	0.6752	0.8809	0.8401	0.7285	0.6855	170-180	0.0712	1687	100,100
DEG	LUMINOUS INTENSITY:cd									UNIT:lm		

Conical surface Flux(90deg): 1146.4 lm

%lum = 68.0%

%lamp = 68.0%

Conical surface Flux(120deg): 1482.8 lm

%lum = 87.9%

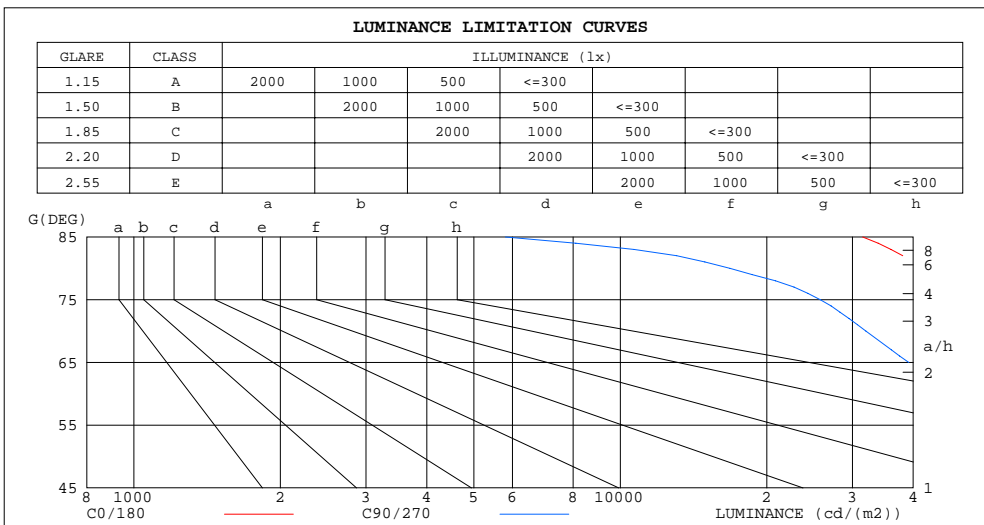
%lamp = 87.9%

C Range: 0 - 360DEG
 C Interval: 15.0DEG
 Test Speed: HIGH
 Temperature: 25.0DEG
 Operators: Alan Wang
 Test Date: 24 March 2022

γ Range: 0 - 180DEG
 γ Interval: 1.0DEG
 Test System: EVERFINE GO-R5000_V2 SYSTEM V2.00.416
 Humidity: 41.2%
 Test Distance: 2.500m [K=1.0477]
 Remarks:

LUMINANCE LIMITATION CURVES

Test:U:120.00V I:0.1001A P:11.930W PF:0.9929 Freq:60.00Hz Lamp Flux:1686.88x1 lm		
NAME: ASD-WLP02A-12DAC-BK_4000K	TYPE: LED	WEIGHT:
SPEC.:	DIM.:	SERIAL No.:
MFR.: ASD Lighting Corp.	SUR.:	Shielding Angle:



LUMINANCE cd/(m2)		
G(DEG)	C0/180	C90/270
85	31494	5805
80	42116	16807
75	52299	25763
70	62896	31977
65	73409	39179
60	84635	49484
55	97049	63259
50	110445	85302
45	124186	115686

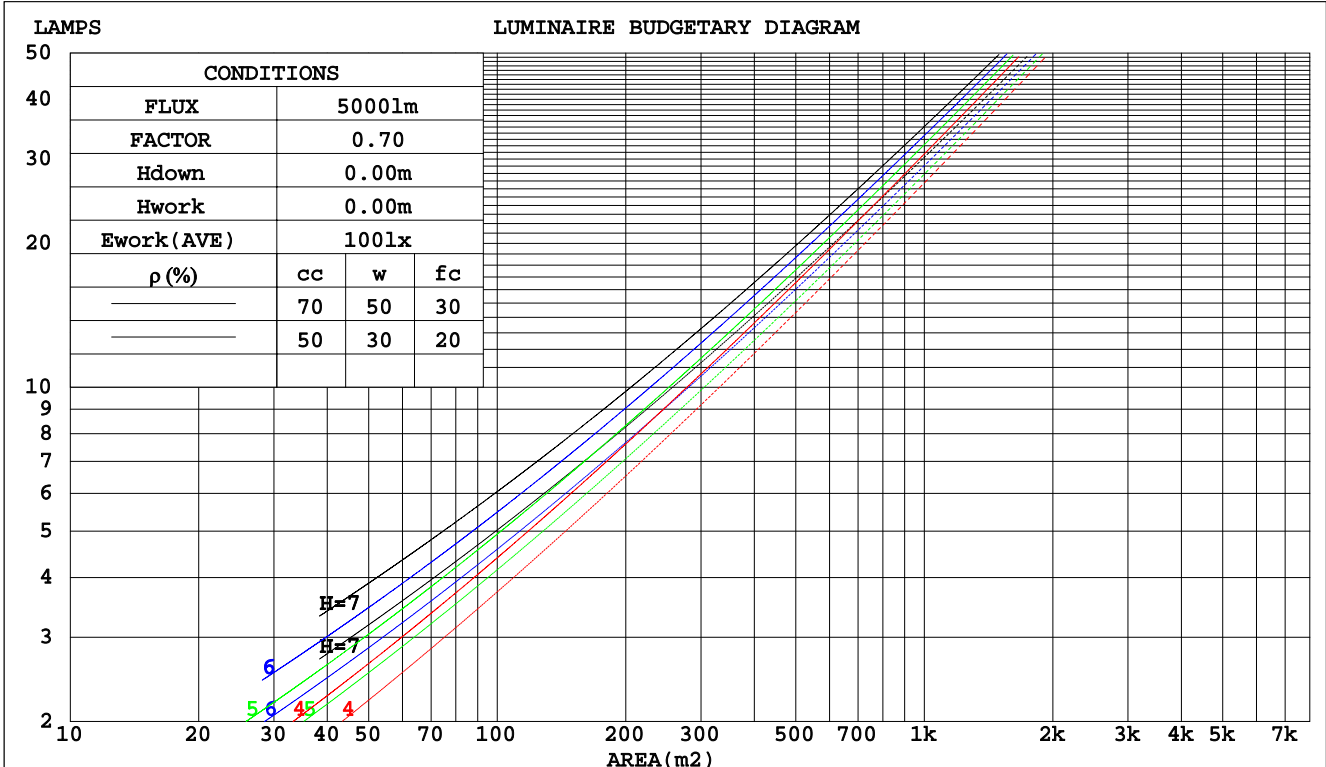
C Range: 0 - 360DEG
 C Interval: 15.0DEG
 Test Speed: HIGH
 Temperature: 25.0DEG
 Operators: Alan Wang
 Test Date: 24 March 2022

γ Range: 0 - 180DEG
 γ Interval: 1.0DEG
 Test System: EVERFINE GO-R5000_V2 SYSTEM V2.00.416
 Humidity: 41.2%
 Test Distance: 2.500m [K=1.0477]
 Remarks:

CU AND LUMINAIRE BUDGETARY ESTIMATE DIAGRAM

Test:U:120.00V I:0.1001A P:11.930W PF:0.9929 Freq:60.00Hz Lamp Flux:1686.88x1 lm		
NAME: ASD-WLP02A-12DAC-BK_4000K	TYPE: LED	WEIGHT:
SPEC.:	DIM.:	SERIAL No.:
MFR.: ASD Lighting Corp.	SUR.:	Shielding Angle:

pcc	80%			70%			50%			30%			10%			0
	50%	30%	10%	50%	30%	10%	50%	30%	10%	50%	30%	10%	50%	30%	10%	0
pw																
pfc	20%			20%			20%			20%			20%			0
RCR	RCR:Room Cavity Ratio															
	Coefficients of Utilization(CU)															
0.0	1.19	1.19	1.19	1.16	1.16	1.16	1.11	1.11	1.11	1.06	1.06	1.06	1.02	1.02	1.02	.00
1.0	1.06	1.03	.00	1.04	1.01	.98	1.00	.97	.95	.96	.94	.92	.93	.91	.89	.87
2.0	.95	.89	.84	.93	.88	.83	.90	.85	.81	.86	.83	.79	.83	.80	.78	.76
3.0	.85	.78	.72	.84	.77	.72	.81	.75	.70	.78	.73	.69	.76	.72	.68	.66
4.0	.77	.69	.63	.75	.68	.63	.73	.67	.62	.71	.65	.61	.69	.64	.60	.58
5.0	.70	.62	.56	.68	.61	.55	.66	.60	.55	.65	.59	.54	.63	.58	.54	.52
6.0	.63	.55	.50	.63	.55	.49	.61	.54	.49	.59	.53	.49	.58	.52	.48	.46
7.0	.58	.50	.45	.57	.50	.44	.56	.49	.44	.54	.48	.44	.53	.48	.44	.42
8.0	.54	.46	.40	.53	.45	.40	.52	.45	.40	.50	.44	.40	.49	.44	.40	.38
9.0	.50	.42	.37	.49	.42	.37	.48	.41	.37	.47	.41	.36	.46	.40	.36	.35
10.0	.46	.39	.34	.46	.39	.34	.45	.38	.34	.44	.38	.33	.43	.37	.33	.32



C Range: 0 - 360DEG
 C Interval: 15.0DEG
 Test Speed: HIGH
 Temperature: 25.0DEG
 Operators: Alan Wang
 Test Date: 24 March 2022

γ Range: 0 - 180DEG
 γ Interval: 1.0DEG
 Test System: EVERFINE GO-R5000_V2 SYSTEM V2.00.416
 Humidity: 41.2%
 Test Distance: 2.500m [K=1.0477]
 Remarks:

WEC AND CCEC

Test:U:120.00V I:0.1001A P:11.930W PF:0.9929 Freq:60.00Hz Lamp Flux:1686.88x1 lm		
NAME: ASD-WLP02A-12DAC-BK_4000K	TYPE: LED	WEIGHT:
SPEC.:	DIM.:	SERIAL No.:
MFR.: ASD Lighting Corp.	SUR.:	Shielding Angle:

ρcc	80%			70%			50%			30%			10%			0
ρw	50%	30%	10%	50%	30%	10%	50%	30%	10%	50%	30%	10%	50%	30%	10%	0
ρfc	20%			20%			20%			20%			20%			0
RCR	RCR:Room Cavity Ratio						Wall Exitance Coefficients(WEC)									
0.0																
1.0	.259	.147	.047	.252	.144	.046	.239	.137	.044	.227	.131	.042	.215	.125	.040	
2.0	.248	.136	.042	.242	.133	.041	.230	.128	.040	.220	.123	.039	.210	.119	.037	
3.0	.233	.124	.037	.227	.122	.037	.217	.118	.036	.208	.114	.035	.200	.110	.034	
4.0	.218	.113	.033	.213	.112	.033	.204	.108	.032	.196	.105	.032	.189	.102	.031	
5.0	.204	.104	.030	.200	.103	.030	.192	.100	.029	.185	.097	.029	.178	.095	.029	
6.0	.191	.096	.027	.187	.095	.027	.180	.092	.027	.174	.090	.027	.168	.088	.026	
7.0	.179	.089	.025	.176	.088	.025	.170	.086	.025	.164	.084	.024	.159	.082	.024	
8.0	.169	.083	.023	.166	.082	.023	.160	.080	.023	.155	.079	.023	.150	.077	.022	
9.0	.159	.077	.022	.157	.076	.021	.152	.075	.021	.147	.074	.021	.143	.072	.021	
10.0	.151	.072	.020	.148	.072	.020	.144	.071	.020	.140	.069	.020	.136	.068	.020	

ρcc	80%			70%			50%			30%			10%			0
ρw	50%	30%	10%	50%	30%	10%	50%	30%	10%	50%	30%	10%	50%	30%	10%	0
ρfc	20%			20%			20%			20%			20%			0
RCR	RCR:Room Cavity Ratio						Ceiling Cavity Exitance Coefficients(CCEC)									
0.0	.192	.192	.192	.164	.164	.164	.112	.112	.112	.064	.064	.064	.021	.021	.021	
1.0	.179	.158	.140	.153	.136	.121	.104	.093	.083	.060	.054	.049	.019	.017	.016	
2.0	.168	.134	.105	.144	.115	.091	.099	.080	.063	.057	.046	.037	.018	.015	.012	
3.0	.159	.116	.081	.136	.100	.070	.094	.069	.049	.054	.041	.029	.017	.013	.010	
4.0	.151	.102	.065	.129	.088	.056	.089	.061	.040	.052	.036	.023	.017	.012	.008	
5.0	.143	.091	.053	.123	.079	.046	.085	.055	.032	.049	.032	.019	.016	.011	.006	
6.0	.136	.083	.044	.117	.072	.038	.081	.050	.027	.047	.029	.016	.015	.010	.005	
7.0	.130	.076	.038	.112	.066	.033	.077	.046	.023	.045	.027	.014	.014	.009	.005	
8.0	.124	.070	.033	.107	.061	.028	.074	.042	.020	.043	.025	.012	.014	.008	.004	
9.0	.118	.065	.029	.102	.056	.025	.071	.040	.018	.041	.023	.011	.013	.008	.004	
10.0	.113	.060	.026	.097	.053	.022	.068	.037	.016	.039	.022	.009	.013	.007	.003	

C Range: 0 - 360DEG
 C Interval: 15.0DEG
 Test Speed: HIGH
 Temperature: 25.0DEG
 Operators: Alan Wang
 Test Date: 24 March 2022

γ Range: 0 - 180DEG
 γ Interval: 1.0DEG
 Test System: EVERFINE GO-R5000_V2 SYSTEM V2.00.416
 Humidity: 41.2%
 Test Distance: 2.500m [K=1.0477]
 Remarks:

UGR(Unified Glare Rating) Table

Test:U:120.00V I:0.1001A P:11.930W PF:0.9929 Freq:60.00Hz Lamp Flux:1686.88x1 lm										
NAME: ASD-WLP02A-12DAC-BK_4000K					TYPE: LED			WEIGHT:		
SPEC.:					DIM.:			SERIAL No.:		
MFR.: ASD Lighting Corp.					SUR.:			Shielding Angle:		
ceiling/cavity	0.7	0.7	0.5	0.5	0.3	0.7	0.7	0.5	0.5	0.3
walls	0.5	0.3	0.5	0.3	0.3	0.5	0.3	0.5	0.3	0.3
working plane	0.2	0.2	0.2	0.2	0.2	0.2	0.2	0.2	0.2	0.2
Room dimensions	Viewed crosswise					Viewed endwise				
x = 2H y = 2H	31.4	32.9	31.8	33.2	33.5	25.3	26.7	25.6	27.0	27.3
3H	32.4	33.7	32.8	34.0	34.4	26.0	27.3	26.3	27.6	28.0
4H	32.6	33.8	33.0	34.2	34.6	26.2	27.4	26.6	27.7	28.1
6H	32.7	33.8	33.1	34.2	34.6	26.2	27.4	26.7	27.7	28.1
8H	32.7	33.8	33.2	34.2	34.6	26.2	27.3	26.7	27.7	28.1
12H	32.7	33.7	33.2	34.1	34.6	26.2	27.2	26.6	27.6	28.0
4H 2H	31.5	32.7	31.9	33.1	33.5	26.7	27.9	27.1	28.2	28.6
3H	32.8	33.8	33.2	34.2	34.6	27.4	28.4	27.9	28.8	29.2
4H	33.1	34.0	33.6	34.5	34.9	27.7	28.6	28.1	29.0	29.4
6H	33.4	34.2	33.8	34.6	35.1	27.8	28.5	28.2	29.0	29.5
8H	33.4	34.1	33.9	34.6	35.1	27.7	28.5	28.2	28.9	29.4
12H	33.4	34.1	33.9	34.6	35.0	27.7	28.4	28.2	28.8	29.3
8H 4H	33.1	33.9	33.6	34.3	34.8	28.2	29.0	28.7	29.4	29.9
6H	33.5	34.1	34.0	34.5	35.0	28.4	29.0	28.9	29.5	29.9
8H	33.5	34.1	34.1	34.6	35.1	28.4	28.9	28.9	29.4	29.9
12H	33.6	34.1	34.1	34.6	35.1	28.3	28.8	28.9	29.3	29.9
12H 4H	33.1	33.8	33.6	34.2	34.7	28.3	29.0	28.8	29.4	29.9
6H	33.4	34.0	34.0	34.4	35.0	28.5	29.0	29.0	29.5	30.0
8H	33.5	34.0	34.0	34.5	35.1	28.5	29.0	29.0	29.5	30.0
CIE190: 2010										

CIE190: 2010
Area: 0.005 m2

C Range: 0 - 360DEG
C Interval: 15.0DEG
Test Speed: HIGH
Temperature: 25.0DEG
Operators: Alan Wang
Test Date: 24 March 2022

γ Range: 0 - 180DEG
γ Interval: 1.0DEG
Test System: EVERFINE GO-R5000_V2 SYSTEM V2.00.416
Humidity: 41.2%
Test Distance: 2.500m [K=1.0477]
Remarks:

UTILIZATION FACTORS TABLE

Test:U:120.00V I:0.1001A P:11.930W PF:0.9929 Freq:60.00Hz Lamp Flux:1686.88x1 lm		
NAME: ASD-WLP02A-12DAC-BK_4000K	TYPE: LED	WEIGHT:
SPEC.:	DIM.:	SERIAL No.:
MFR.: ASD Lighting Corp.	SUR.:	Shielding Angle:

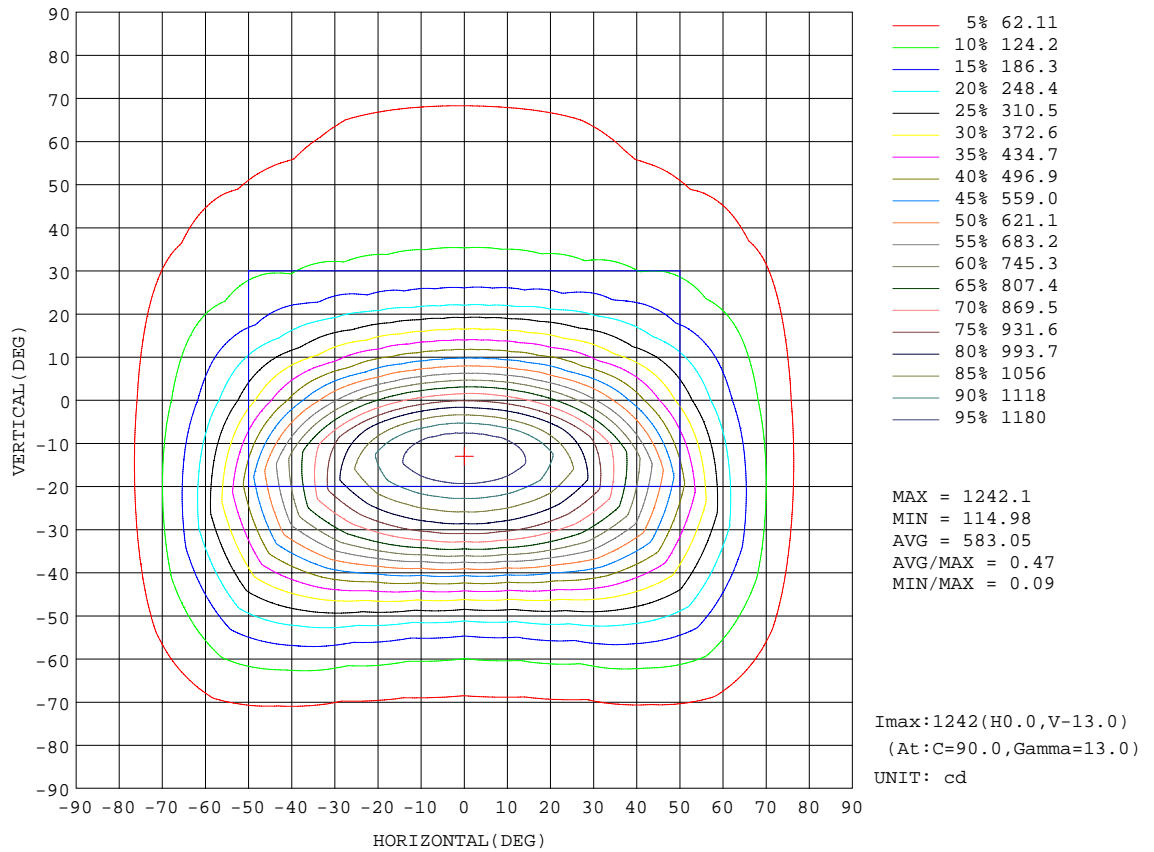
REFLECTANCE										
Ceiling	0.8	0.8	0.8	0.7	0.7	0.7	0.5	0.5	0.5	0
Walls	0.7	0.5	0.3	0.7	0.5	0.3	0.7	0.5	0.3	0
Working plane	0.2	0.2	0.2	0.2	0.2	0.2	0.2	0.2	0.2	0
ROOM INDEX	UTILIZATION FACTORS(PERCENT) $k(RI) \times RCR = 5$									
k = 0.60	66	56	50	65	55	50	64	55	49	44
0.80	76	66	59	75	65	59	73	65	59	53
1.00	83	74	68	82	73	68	80	74	67	61
1.25	90	81	75	88	80	75	86	79	74	68
1.50	94	86	80	93	85	80	90	83	79	72
2.00	100	93	87	98	92	87	95	89	85	78
2.50	103	96	91	101	95	91	97	93	89	81
3.00	106	100	95	104	98	94	100	96	92	84
4.00	109	104	100	107	102	99	103	99	96	88
5.00	111	107	104	108	105	102	104	101	99	90
ROOM INDEX	UF(total)									Direct
According to DIN EN 13032-2 2004			Suspended				SHRNOM = 1.25			

C Range: 0 - 360DEG
 C Interval: 15.0DEG
 Test Speed: HIGH
 Temperature: 25.0DEG
 Operators: Alan Wang
 Test Date: 24 March 2022

γ Range: 0 - 180DEG
 γ Interval: 1.0DEG
 Test System: EVERFINE GO-R5000_V2 SYSTEM V2.00.416
 Humidity: 41.2%
 Test Distance: 2.500m [K=1.0477]
 Remarks:

ISOCANDELA DIAGRAM

Test:U:120.00V I:0.1001A P:11.930W PF:0.9929 Freq:60.00Hz Lamp Flux:1686.88x1 lm		
NAME: ASD-WLP02A-12DAC-BK_4000K	TYPE: LED	WEIGHT:
SPEC.:	DIM.:	SERIAL No.:
MFR.: ASD Lighting Corp.	SUR.:	Shielding Angle:



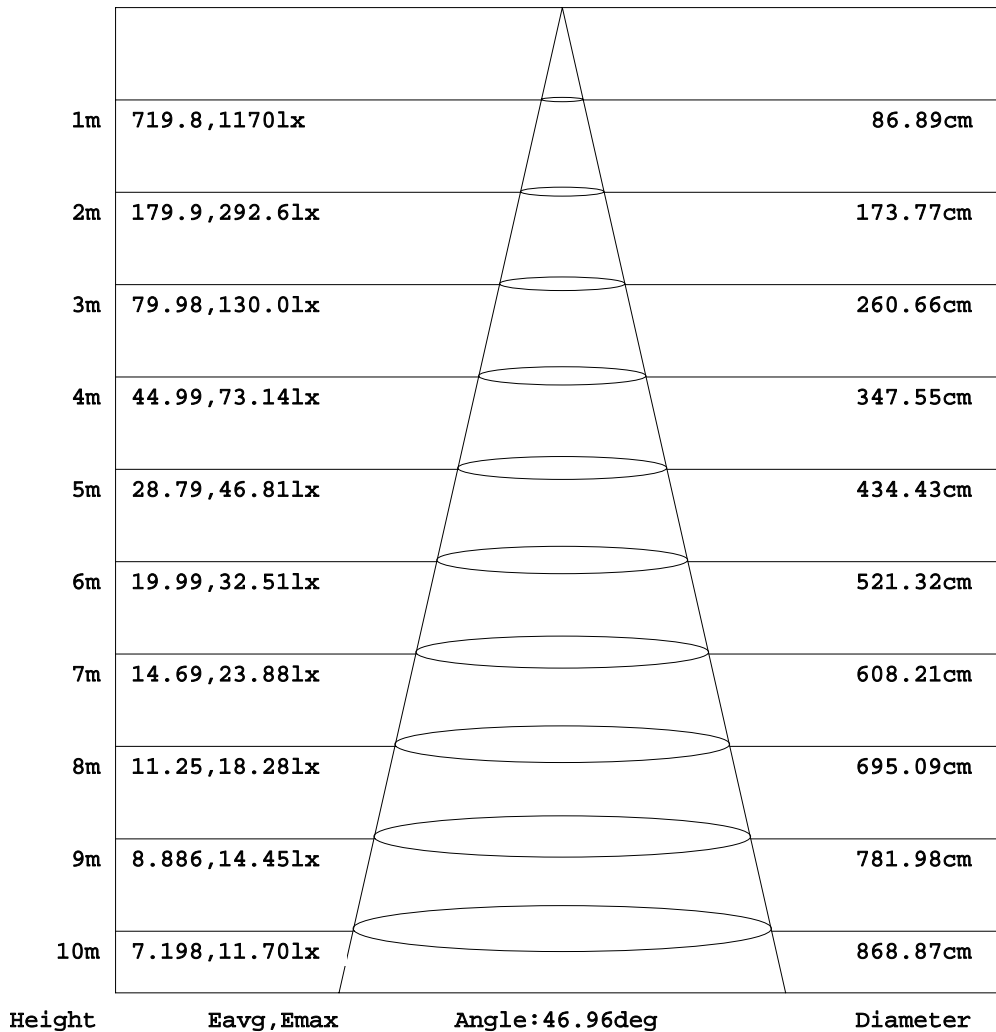
C Range: 0 - 360DEG
 C Interval: 15.0DEG
 Test Speed: HIGH
 Temperature: 25.0DEG
 Operators: Alan Wang
 Test Date: 24 March 2022

γ Range: 0 - 180DEG
 γ Interval: 1.0DEG
 Test System: EVERFINE GO-R5000_V2 SYSTEM V2.00.416
 Humidity: 41.2%
 Test Distance: 2.500m [K=1.0477]
 Remarks:

AAI Figure

Test:U:120.00V I:0.1001A P:11.930W PF:0.9929 Freq:60.00Hz Lamp Flux:1686.88x1 lm		
NAME: ASD-WLP02A-12DAC-BK_4000K	TYPE: LED	WEIGHT:
SPEC.:	DIM.:	SERIAL No.:
MFR.: ASD Lighting Corp.	SUR.:	Shielding Angle:

Flux out:448.2 lm



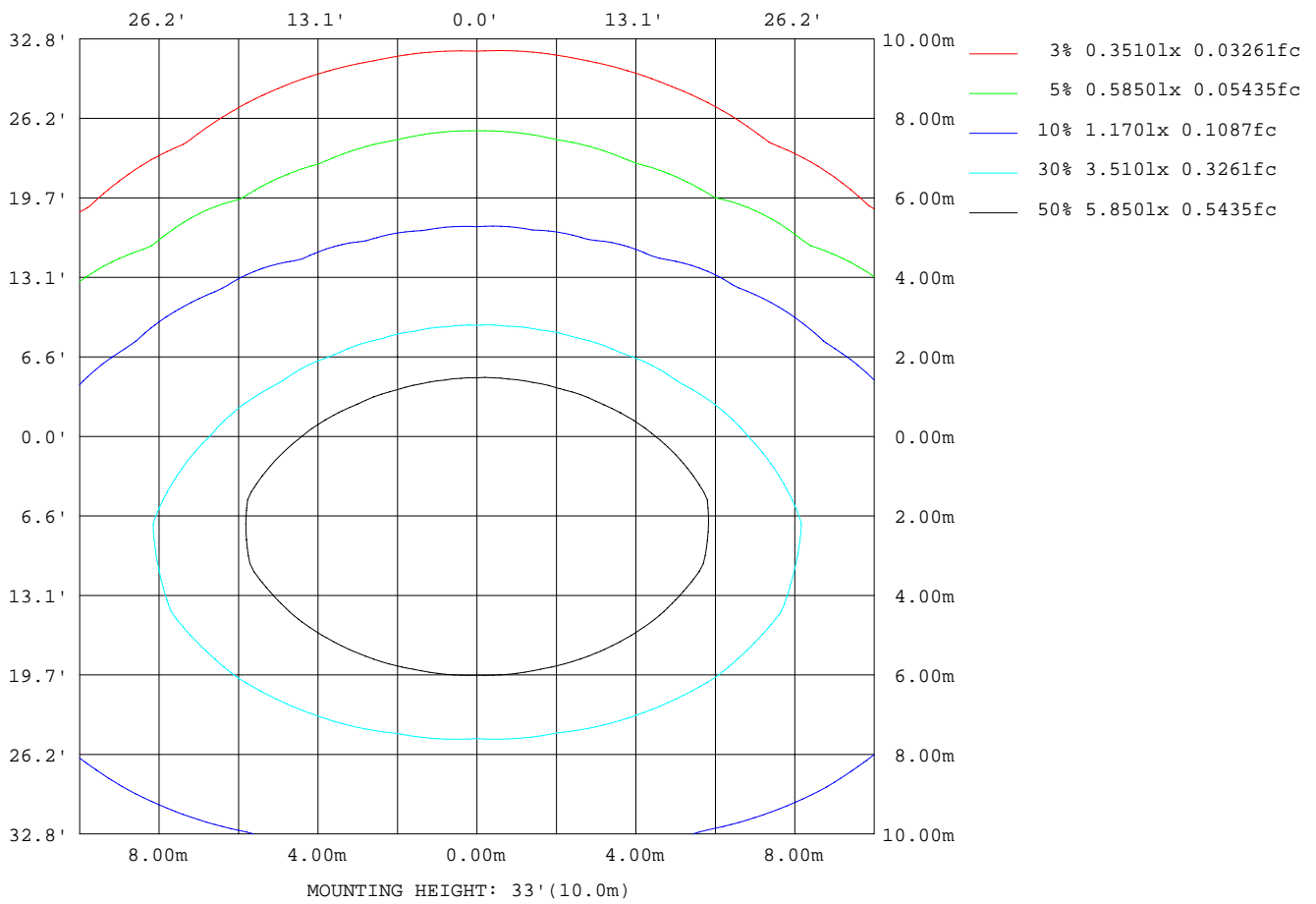
Note:The Curves indicate the illuminated area and the average illumination when the luminaire is at different distance.

C Range: 0 - 360DEG
 C Interval: 15.0DEG
 Test Speed: HIGH
 Temperature: 25.0DEG
 Operators:Alan Wang
 Test Date:24 March 2022

γ Range: 0 - 180DEG
 γ Interval: 1.0DEG
 Test System:EVERFINE GO-R5000_V2 SYSTEM V2.00.416
 Humidity: 41.2%
 Test Distance:2.500m [K=1.0477]
 Remarks:

ISOLUX DIAGRAM

Test:U:120.00V I:0.1001A P:11.930W PF:0.9929 Freq:60.00Hz Lamp Flux:1686.88x1 lm		
NAME: ASD-WLP02A-12DAC-BK_4000K	TYPE: LED	WEIGHT:
SPEC.:	DIM.:	SERIAL No.:
MFR.: ASD Lighting Corp.	SUR.:	Shielding Angle:



C Range: 0 - 360DEG
 C Interval: 15.0DEG
 Test Speed: HIGH
 Temperature: 25.0DEG
 Operators: Alan Wang
 Test Date: 24 March 2022

γ Range: 0 - 180DEG
 γ Interval: 1.0DEG
 Test System: EVERFINE GO-R5000_V2 SYSTEM V2.00.416
 Humidity: 41.2%
 Test Distance: 2.500m [K=1.0477]
 Remarks:

LED Avg.L Report

Test:U:120.00V I:0.1001A P:11.930W PF:0.9929 Freq:60.00Hz Lamp Flux:1686.88x1 lm		
NAME: ASD-WLP02A-12DAC-BK_4000K	TYPE: LED	WEIGHT:
SPEC.:	DIM.:	SERIAL No.:
MFR.: ASD Lighting Corp.	SUR.:	Shielding Angle:

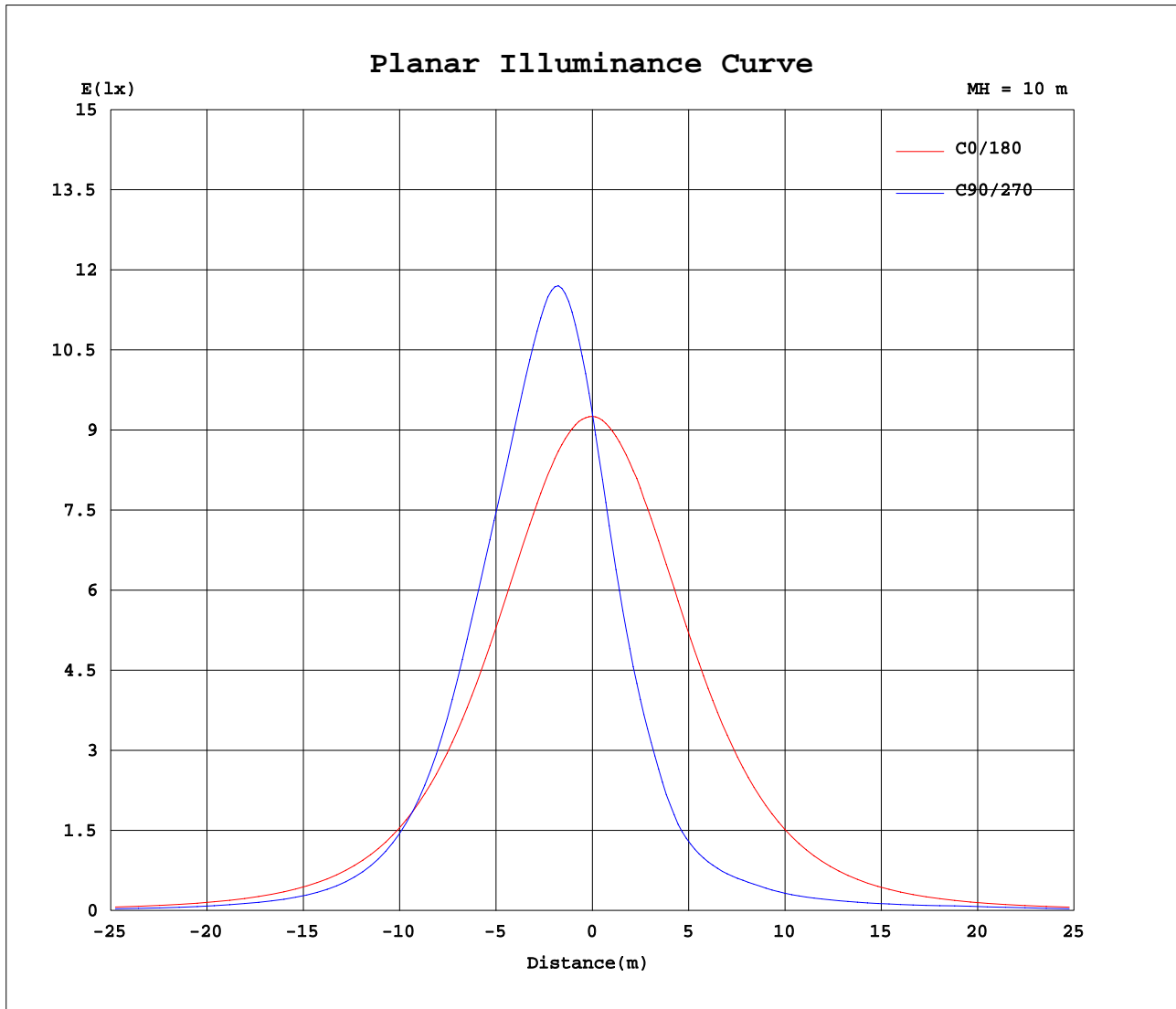
AvgL	cd/m2
L_0~180(65)av	72602
L_0~180(75)av	52313
L_0~180(85)av	32603
L_90~270(65)av	38950
L_90~270(75)av	28351
L_90~270(85)av	22074
L_45(65)av	58703
L_45(75)av	41173
L_45(85)av	28394

Standard: GB/T 29293-2012

C Range: 0 - 360DEG
 C Interval: 15.0DEG
 Test Speed: HIGH
 Temperature: 25.0DEG
 Operators: Alan Wang
 Test Date: 24 March 2022

γ Range: 0 - 180DEG
 γ Interval: 1.0DEG
 Test System: EVERFINE GO-R5000_V2 SYSTEM V2.00.416
 Humidity: 41.2%
 Test Distance: 2.500m [K=1.0477]
 Remarks:

Planar Illuminance Curve



C Range: 0 - 360DEG
C Interval: 15.0DEG
Test Speed: HIGH
Temperature: 25.0DEG
Operators: Alan Wang
Test Date: 24 March 2022

γ Range: 0 - 180DEG
 γ Interval: 1.0DEG
Test System: EVERFINE GO-R5000_V2 SYSTEM V2.00.416
Humidity: 41.2%
Test Distance: 2.500m [K=1.0477]
Remarks:

LUMINOUS DISTRIBUTION INTENSITY DATA

Test:U:120.00V I:0.1001A P:11.930W PF:0.9929 Freq:60.00Hz Lamp Flux:1686.88x1 lm		
NAME: ASD-WLP02A-12DAC-BK_4000K	TYPE: LED	WEIGHT:
SPEC.:	DIM.:	SERIAL No.:
MFR.: ASD Lighting Corp.	SUR.:	Shielding Angle:

Table--1

UNIT: cd

C(DEG) γ (DEG)	0	15	30	45	60	75	90	105	120	135	150	165	180	195	210	225	240	255	270
0	926	926	926	927	929	930	931	931	932	933	932	932	926	926	926	927	929	930	931
5	920	971	1016	1056	1084	1103	1110	1104	1087	1058	1019	973	916	866	820	781	752	735	729
10	901	999	1086	1153	1196	1218	1225	1219	1197	1152	1085	998	893	794	705	635	586	558	549
15	867	1011	1129	1199	1226	1231	1232	1230	1225	1198	1127	1009	856	713	592	506	448	417	408
20	821	1005	1137	1183	1182	1173	1169	1173	1182	1183	1136	1002	808	626	489	396	337	301	290
25	761	981	1110	1123	1102	1081	1073	1080	1102	1126	1110	977	747	539	397	304	238	206	198
30	691	938	1051	1038	1001	970	957	970	1001	1042	1052	933	677	455	316	220	173	156	152
35	612	875	970	934	876	813	787	815	877	937	974	870	598	378	246	164	137	127	125
40	527	793	868	812	709	616	585	620	714	815	875	790	514	309	186	131	115	112	110
45	439	695	750	666	530	436	409	441	538	673	759	694	429	247	143	109	101	93.9	91.5
50	355	582	620	513	379	298	274	302	386	522	631	586	348	193	116	93.6	86.0	81.4	81.5
55	278	467	488	377	263	200	181	203	270	385	499	471	273	149	95.2	82.0	74.7	75.4	76.7
60	212	356	366	268	178	136	124	137	184	274	375	358	207	115	78.9	70.5	68.2	73.8	77.8
65	155	256	260	184	118	91.5	82.8	92.8	123	190	266	258	152	87.3	65.8	61.1	66.9	77.2	81.8
70	108	172	173	118	75.2	59.3	54.7	60.2	78.0	122	178	174	106	64.5	53.5	50.7	52.9	54.0	55.9
75	67.7	105	105	70.1	44.8	35.9	33.3	36.1	46.1	72.2	108	106	67.7	44.7	39.1	35.3	37.2	39.5	40.0
80	36.6	53.0	52.4	34.6	21.1	15.6	14.6	16.2	21.7	35.8	54.5	54.7	37.5	27.9	26.4	24.3	25.3	26.6	27.2
85	13.7	18.1	16.4	10.2	4.42	2.79	2.53	2.88	4.60	10.1	16.7	19.0	14.7	14.3	14.6	14.4	15.2	16.4	16.7
90	1.86	1.69	1.23	0.78	0.34	0.07	0.03	0.04	0.19	0.53	0.93	1.34	1.67	2.90	4.65	6.13	7.51	9.86	11.4
95	1.28	1.00	0.68	0.44	0.19	0.04	0.04	0.04	0.07	0.21	0.05	0.08	0.57	0.49	1.30	2.30	3.87	5.49	5.79
100	0.83	0.13	0.47	0.04	0.04	0.04	0.04	0.04	0.04	0.04	0.12	0.06	0.29	0.29	0.24	0.17	0.13	1.96	2.33
105	0.50	0.11	0.25	0.09	0.04	0.04	0.04	0.04	0.05	0.05	0.05	0.06	0.08	0.19	0.23	0.24	0.22	0.18	0.13
110	0.20	0.10	0.07	0.05	0.05	0.05	0.05	0.05	0.05	0.06	0.08	0.10	0.21	0.26	0.27	0.25	0.20	0.16	0.18
115	0.13	0.10	0.07	0.06	0.06	0.05	0.05	0.06	0.06	0.07	0.10	0.13	0.24	0.29	0.31	0.30	0.26	0.22	0.20
120	0.17	0.13	0.09	0.07	0.06	0.06	0.06	0.07	0.07	0.09	0.13	0.17	0.30	0.35	0.38	0.39	0.35	0.31	0.29
125	0.21	0.16	0.11	0.09	0.08	0.07	0.07	0.08	0.09	0.12	0.17	0.21	0.37	0.42	0.47	0.51	0.48	0.45	0.43
130	0.26	0.21	0.15	0.11	0.10	0.09	0.09	0.09	0.12	0.16	0.21	0.26	0.45	0.51	0.58	0.64	0.64	0.61	0.59
135	0.31	0.26	0.20	0.15	0.13	0.12	0.12	0.13	0.15	0.20	0.27	0.32	0.52	0.59	0.67	0.74	0.77	0.77	0.76
140	0.36	0.32	0.27	0.21	0.17	0.16	0.15	0.16	0.20	0.26	0.32	0.36	0.58	0.65	0.72	0.83	0.88	0.90	0.88
145	0.41	0.39	0.34	0.28	0.24	0.21	0.21	0.22	0.26	0.32	0.37	0.40	0.65	0.70	0.77	0.88	0.97	1.01	0.99
150	0.46	0.46	0.42	0.37	0.32	0.29	0.27	0.30	0.34	0.39	0.42	0.43	0.71	0.75	0.79	0.91	1.01	1.07	1.06
155	0.53	0.55	0.52	0.47	0.42	0.39	0.37	0.40	0.44	0.48	0.50	0.48	0.77	0.77	0.84	0.90	0.99	1.07	1.08
160	0.61	0.63	0.60	0.56	0.51	0.47	0.45	0.50	0.52	0.55	0.54	0.53	0.85	0.84	0.85	0.91	0.95	1.02	1.04
165	0.66	0.69	0.69	0.66	0.62	0.58	0.55	0.60	0.63	0.62	0.60	0.57	0.88	0.88	0.86	0.87	0.90	0.93	0.95
170	0.71	0.74	0.73	0.71	0.67	0.64	0.61	0.65	0.66	0.64	0.60	0.58	0.90	0.90	0.87	0.85	0.83	0.83	0.82
175	0.78	0.80	0.78	0.75	0.71	0.68	0.66	0.67	0.69	0.67	0.65	0.65	0.90	0.90	0.88	0.84	0.80	0.78	0.76
180	0.88	0.88	0.84	0.81	0.77	0.73	0.71	0.68	0.68	0.68	0.68	0.68	0.71	0.88	0.88	0.88	0.84	0.80	0.76

C Range: 0 - 360DEG
 C Interval: 15.0DEG
 Test Speed: HIGH
 Temperature: 25.0DEG
 Operators: Alan Wang
 Test Date: 24 March 2022

γ Range: 0 - 180DEG
 γ Interval: 1.0DEG
 Test System: EVERFINE GO-R5000_V2 SYSTEM V2.00.416
 Humidity: 41.2%
 Test Distance: 2.500m [K=1.0477]
 Remarks:

LUMINOUS DISTRIBUTION INTENSITY DATA

Test:U:120.00V I:0.1001A P:11.930W PF:0.9929 Freq:60.00Hz Lamp Flux:1686.88x1 lm		
NAME: ASD-WLP02A-12DAC-BK_4000K	TYPE: LED	WEIGHT:
SPEC.:	DIM.:	SERIAL No.:
MFR.: ASD Lighting Corp.	SUR.:	Shielding Angle:

Table--2

UNIT: cd

C(DEG) γ (DEG)	285	300	315	330	345														
0	931	932	933	932	932														
5	737	757	788	827	876														
10	560	591	642	715	806														
15	419	453	513	603	727														
20	304	342	404	499	640														
25	208	242	311	406	553														
30	157	175	226	326	468														
35	128	138	168	256	390														
40	112	116	133	194	319														
45	94.8	101	110	148	255														
50	81.3	86.6	94.3	118	200														
55	74.7	74.7	82.4	96.6	155														
60	73.5	67.9	71.3	79.6	119														
65	76.4	66.3	60.9	65.7	90.1														
70	53.0	53.6	50.6	53.2	66.2														
75	39.0	36.6	35.5	39.3	45.2														
80	26.3	25.0	24.5	26.3	27.8														
85	16.3	15.4	14.8	15.3	14.1														
90	9.69	7.34	6.30	4.81	3.03														
95	5.25	3.89	2.72	0.66	1.03														
100	1.42	0.14	0.18	0.71	0.19														
105	0.14	0.31	0.25	0.44	0.23														
110	0.17	0.21	0.27	0.29	0.26														
115	0.22	0.27	0.32	0.32	0.28														
120	0.31	0.35	0.40	0.39	0.35														
125	0.44	0.47	0.50	0.47	0.42														
130	0.60	0.62	0.61	0.57	0.51														
135	0.75	0.74	0.71	0.65	0.58														
140	0.86	0.84	0.79	0.70	0.63														
145	0.96	0.93	0.85	0.75	0.68														
150	1.03	0.98	0.90	0.79	0.73														
155	1.07	1.01	0.92	0.86	0.78														
160	1.02	1.01	0.93	0.89	0.83														
165	0.95	0.95	0.90	0.86	0.82														
170	0.83	0.82	0.78	0.79	0.78														
175	0.71	0.75	0.72	0.76	0.75														
180	0.71	0.68	0.69	0.68	0.68														

C Range: 0 - 360DEG
 C Interval: 15.0DEG
 Test Speed: HIGH
 Temperature: 25.0DEG
 Operators: Alan Wang
 Test Date: 24 March 2022

γ Range: 0 - 180DEG
 γ Interval: 1.0DEG
 Test System: EVERFINE GO-R5000_V2 SYSTEM V2.00.416
 Humidity: 41.2%
 Test Distance: 2.500m [K=1.0477]
 Remarks: