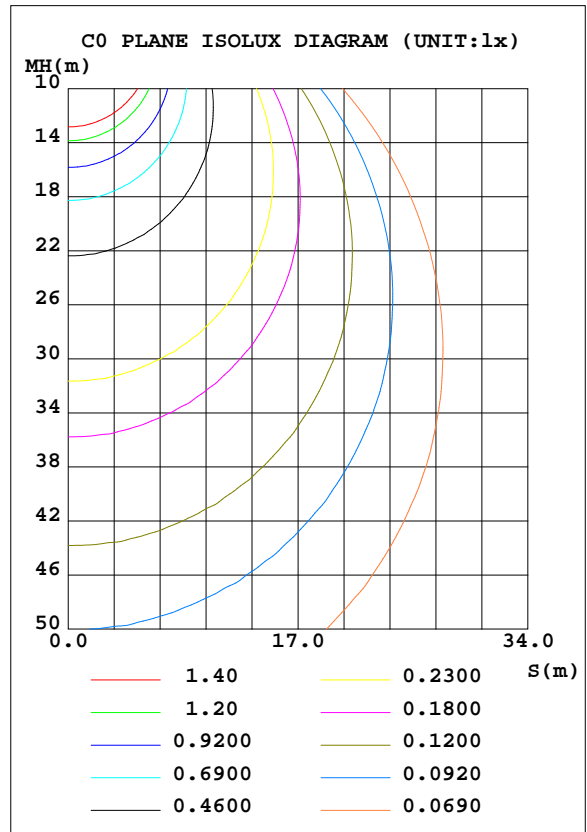
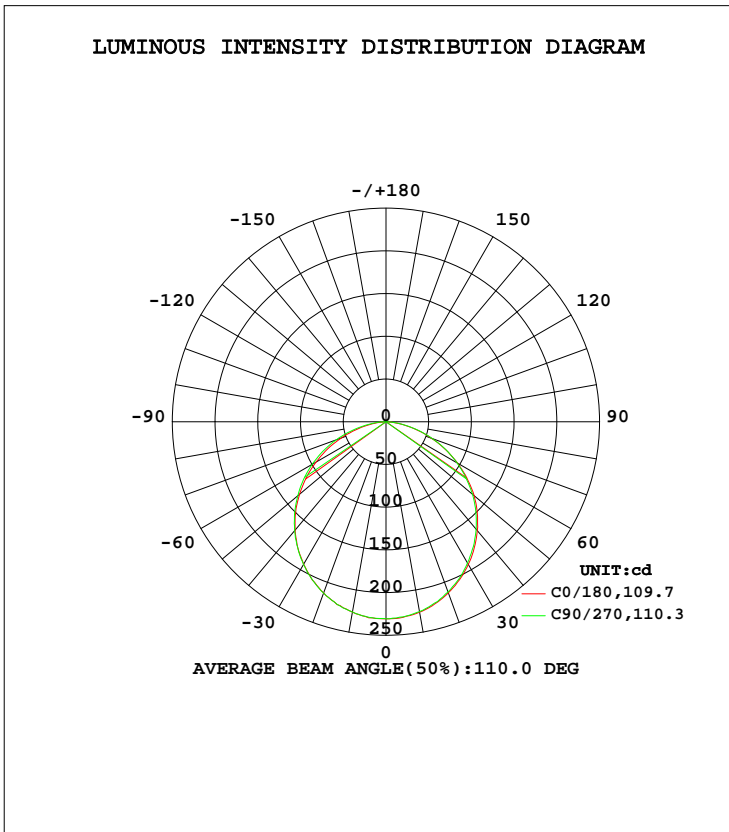


LUMINAIRE PHOTOMETRIC TEST REPORT

Test:U:120.0V I:0.0936A P:10.45W PF:0.9301 Lamp Flux:636.691x1 lm		
NAME: LED luminaire	TYPE:N/A	WEIGHT:N/A
SPEC.:ASD-MPS-5D10CC-BK 3000K	DIM.: N/A	SERIAL No.:N/A
MFR.: ASD LIGHTING CORP	SUR.:N/A	Shielding Angle:N/A

DATA OF LAMP		PHOTOMETRIC DATA			
MODEL	PSZ2S230215005-10	Imax(cd)	231.0	S/MH(C0/180)	1.24
NOMINAL POWER(W)		LOR(%)	100.0	S/MH(C90/270)	1.24
RATED VOLTAGE(V)	120	TOTAL FLUX(lm)	636.69	η UP, DN(C0-180)	0.1,50.5
NOMINAL FLUX(lm)	636.691	CIE CLASS	DIRECT	η UP, DN(C180-360)	0.0,49.4
LAMPS INSIDE	1	η up(%)	0.1	CIBSE SHR NOM	1.25
TEST VOLTAGE(V)	120	η down(%)	99.9	CIBSE SHR MAX	1.35



C Range: 0 - 360DEG
 C Interval: 22.5DEG
 Test Speed: HIGH
 Temperature:24.6DEG
 Operators:Evan
 Test Date:2023-02-21

γ Range: 0 - 180DEG
 γ Interval: 1.0DEG
 Test System:EVERFINE GO-R5000_V2 SYSTEM V2.0.351
 Humidity:51%
 Test Distance:2.532m [K=1.0000]
 Remarks:

ZONAL FLUX DIAGRAM

ZONAL FLUX DIAGRAM:

γ	C0	C45	C90	C135	C180	C225	C270	C315	γ	Φ zone	Φ total	%lum, lamp
10	226.2	226.3	226.2	226.5	226.4	226.3	225.6	225.5	0- 10	21.80	21.80	3.42,3.42
20	213.2	213.4	213.4	213.8	213.2	212.7	212.0	212.0	10- 20	62.22	84.02	13.2,13.2
30	192.5	192.6	193.0	193.6	192.7	191.9	190.9	190.7	20- 30	93.74	177.8	27.9,27.9
40	165.5	165.9	166.4	167.0	166.3	165.3	164.1	163.7	30- 40	112.3	290.1	45.6,45.6
50	132.2	134.2	134.9	135.7	134.8	133.6	132.3	131.7	40- 50	115.7	405.8	63.7,63.7
60	94.68	97.75	99.73	100.4	96.58	96.77	95.87	93.77	50- 60	103.2	509.0	79.9,79.9
70	55.89	58.92	61.93	61.47	56.99	57.46	57.76	54.98	60- 70	76.83	585.8	92,92
80	19.77	21.91	25.20	23.41	20.46	20.31	21.68	18.97	70- 80	41.51	627.3	98.5,98.5
90	0.0378	0.0534	0.0345	0.1245	0.0230	0.0036	0.0051	0.0051	80- 90	8.785	636.1	99.9,99.9
100	0.0462	0.0499	0.0499	0.0509	0.0104	0.0133	0.0146	0.0178	90-100	0.0280	636.1	99.9,99.9
110	0.0610	0.0666	0.0600	0.0657	0.0286	0.0354	0.0316	0.0360	100-110	0.0449	636.2	99.9,99.9
120	0.0747	0.0797	0.0775	0.0794	0.0445	0.0508	0.0498	0.0512	110-120	0.0552	636.2	99.9,99.9
130	0.1135	0.1182	0.1202	0.1184	0.0748	0.0803	0.0752	0.0792	120-130	0.0716	636.3	99.9,99.9
140	0.1849	0.1963	0.1951	0.1912	0.0990	0.1067	0.1081	0.1071	130-140	0.0926	636.4	100,100
150	0.2645	0.2857	0.2958	0.2798	0.1199	0.1216	0.1364	0.1244	140-150	0.1117	636.5	100,100
160	0.3388	0.3495	0.3508	0.3492	0.1650	0.1676	0.1587	0.1590	150-160	0.1068	636.6	100,100
170	0.3176	0.3231	0.3297	0.3273	0.1998	0.1916	0.1872	0.1948	160-170	0.0740	636.7	100,100
180	0.2659	0.2462	0.2443	0.2671	0.2663	0.2570	0.2429	0.2510	170-180	0.0246	636.7	100,100
DEG	LUMINOUS INTENSITY:cd									UNIT:lm		

Conical surface Flux(90deg): 348.46 lm

%lum = 54.7%
%lamp = 54.7%

Conical surface Flux(120deg): 508.96 lm

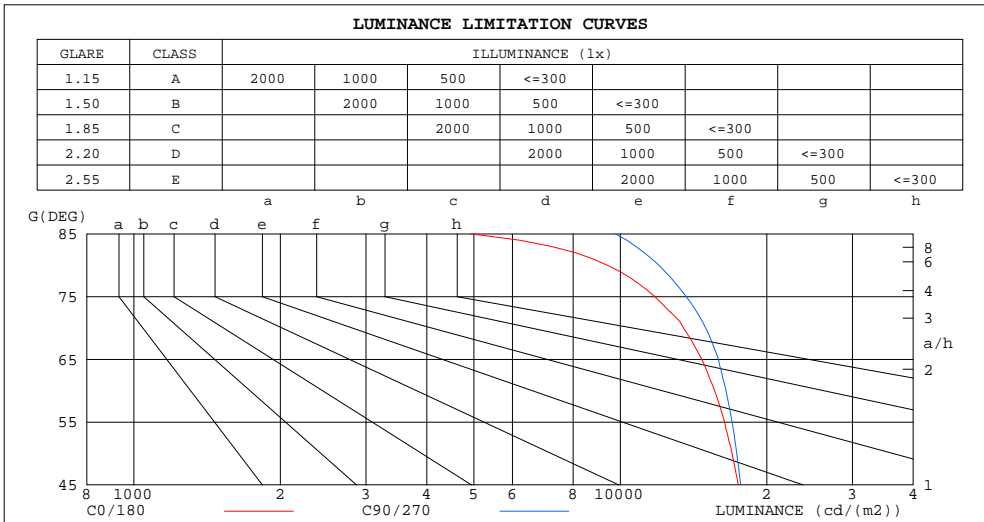
%lum = 79.9%
%lamp = 79.9%

C Range: 0 - 360DEG
C Interval: 22.5DEG
Test Speed: HIGH
Temperature:24.6DEG
Operators:Evan
Test Date:2023-02-21

γ Range: 0 - 180DEG
γ Interval: 1.0DEG
Test System:EVERFINE GO-R5000_V2 SYSTEM V2.0.351
Humidity:51%
Test Distance:2.532m [K=1.0000]
Remarks:

LUMINANCE LIMITATION CURVES

Test:U:120.0V I:0.0936A P:10.45W PF:0.9301 Lamp Flux:636.691x1 lm		
NAME: LED luminaire	TYPE:N/A	WEIGHT:N/A
SPEC.:ASD-MPS-5D10CC-BK 3000K	DIM.: N/A	SERIAL No.:N/A
MFR.: ASD LIGHTING CORP	SUR.:N/A	Shielding Angle:N/A



LUMINANCE cd/(m2)		
G (DEG)	C0/180	C90/270
85	4928	9764
80	9396	12000
75	11770	13655
70	13487	14972
65	14698	15911
60	15629	16492
55	16374	16976
50	16974	17352
45	17461	17697

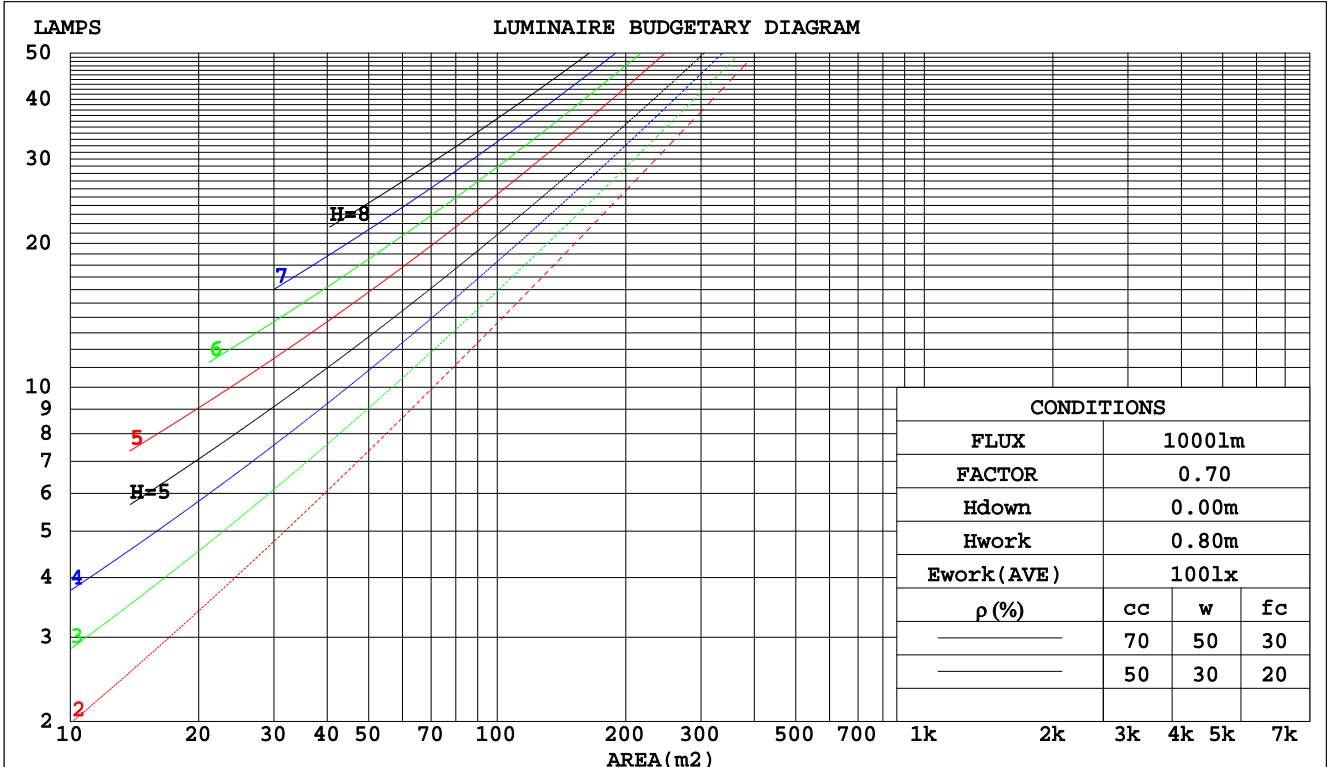
C Range: 0 - 360DEG
 C Interval: 22.5DEG
 Test Speed: HIGH
 Temperature:24.6DEG
 Operators:Evan
 Test Date:2023-02-21

γ Range: 0 - 180DEG
 γ Interval: 1.0DEG
 Test System:EVERFINE GO-R5000_V2 SYSTEM V2.0.351
 Humidity:51%
 Test Distance:2.532m [K=1.0000]
 Remarks:

CU AND LUMINAIRE BUDGETARY ESTIMATE DIAGRAM

Test:U:120.0V I:0.0936A P:10.45W PF:0.9301 Lamp Flux:636.69lx1 lm		
NAME: LED luminaire	TYPE:N/A	WEIGHT:N/A
SPEC.:ASD-MPS-5D10CC-BK 3000K	DIM.: N/A	SERIAL No.:N/A
MFR.: ASD LIGHTING CORP	SUR.:N/A	Shielding Angle:N/A

pcc	80%			70%			50%			30%			10%			0
	50%	30%	10%	50%	30%	10%	50%	30%	10%	50%	30%	10%	50%	30%	10%	0
pw																0
pfc	20%			20%			20%			20%			20%			0
RCR	RCR:Room Cavity Ratio															
	Coefficients of Utilization(CU)															
0.0	1.19	1.19	1.19	1.16	1.16	1.16	1.11	1.11	1.11	1.06	1.06	1.06	1.02	1.02	1.02	.00
1.0	1.04	1.00	.96	1.02	.98	.95	.98	.95	.92	.94	.91	.89	.90	.88	.86	.84
2.0	.91	.84	.79	.89	.83	.78	.86	.80	.76	.82	.78	.74	.79	.76	.72	.70
3.0	.80	.72	.65	.78	.71	.65	.75	.69	.64	.73	.67	.63	.70	.65	.61	.59
4.0	.71	.62	.55	.70	.61	.55	.67	.60	.54	.65	.59	.54	.62	.57	.53	.51
5.0	.63	.54	.48	.62	.54	.47	.60	.53	.47	.58	.52	.46	.56	.50	.46	.44
6.0	.57	.48	.42	.56	.48	.41	.54	.47	.41	.53	.46	.41	.51	.45	.40	.38
7.0	.52	.43	.37	.51	.43	.37	.49	.42	.36	.48	.41	.36	.47	.40	.36	.34
8.0	.47	.39	.33	.46	.38	.33	.45	.38	.33	.44	.37	.32	.43	.37	.32	.30
9.0	.43	.35	.30	.43	.35	.29	.42	.34	.29	.40	.34	.29	.39	.33	.29	.27
10.0	.40	.32	.27	.39	.32	.27	.38	.31	.27	.37	.31	.26	.37	.31	.26	.25



C Range: 0 - 360DEG
 C Interval: 22.5DEG
 Test Speed: HIGH
 Temperature:24.6DEG
 Operators:Evan
 Test Date:2023-02-21

γ Range: 0 - 180DEG
 γ Interval: 1.0DEG
 Test System:EVERFINE GO-R5000_V2 SYSTEM V2.0.351
 Humidity:51%
 Test Distance:2.532m [K=1.0000]
 Remarks:

WEC AND CCEC

Test:U:120.0V I:0.0936A P:10.45W PF:0.9301 Lamp Flux:636.691x1 lm		
NAME: LED luminaire	TYPE:N/A	WEIGHT:N/A
SPEC.:ASD-MPS-5D10CC-BK 3000K	DIM.: N/A	SERIAL No.:N/A
MFR.: ASD LIGHTING CORP	SUR.:N/A	Shielding Angle:N/A

ρcc	80%			70%			50%			30%			10%			0
ρw	50%	30%	10%	50%	30%	10%	50%	30%	10%	50%	30%	10%	50%	30%	10%	0
ρfc	20%			20%			20%			20%			20%			0
RCR	RCR:Room Cavity Ratio						Wall Exitance Coefficients(WEC)									
0.0																
1.0	.301	.171	.054	.294	.168	.053	.281	.161	.051	.269	.155	.050	.257	.149	.048	
2.0	.286	.157	.048	.280	.154	.047	.268	.149	.046	.257	.144	.045	.247	.140	.044	
3.0	.266	.142	.042	.260	.139	.042	.250	.136	.041	.241	.132	.040	.232	.128	.040	
4.0	.246	.128	.038	.241	.126	.037	.232	.123	.037	.224	.120	.036	.216	.117	.036	
5.0	.228	.116	.034	.224	.115	.033	.216	.112	.033	.208	.110	.033	.201	.107	.032	
6.0	.212	.106	.030	.208	.105	.030	.201	.103	.030	.194	.101	.030	.188	.099	.029	
7.0	.197	.098	.028	.194	.097	.028	.187	.095	.027	.181	.093	.027	.176	.091	.027	
8.0	.184	.090	.025	.181	.089	.025	.176	.088	.025	.170	.086	.025	.165	.085	.025	
9.0	.173	.084	.023	.170	.083	.023	.165	.082	.023	.160	.080	.023	.155	.079	.023	
10.0	.163	.078	.022	.160	.077	.022	.156	.076	.021	.151	.075	.021	.147	.074	.021	

ρcc	80%			70%			50%			30%			10%			0
ρw	50%	30%	10%	50%	30%	10%	50%	30%	10%	50%	30%	10%	50%	30%	10%	0
ρfc	20%			20%			20%			20%			20%			0
RCR	RCR:Room Cavity Ratio						Ceiling Cavity Exitance Coefficients(CCEC)									
0.0	.191	.191	.191	.163	.163	.163	.112	.112	.112	.064	.064	.064	.020	.020	.020	
1.0	.180	.157	.136	.154	.135	.117	.106	.093	.081	.061	.054	.047	.019	.017	.015	
2.0	.172	.133	.099	.148	.114	.086	.101	.079	.060	.058	.046	.035	.019	.015	.011	
3.0	.164	.115	.076	.141	.099	.066	.097	.069	.046	.056	.040	.027	.018	.013	.009	
4.0	.157	.102	.060	.135	.088	.052	.093	.061	.036	.054	.036	.022	.017	.012	.007	
5.0	.149	.091	.048	.128	.079	.042	.088	.055	.030	.051	.032	.018	.017	.011	.006	
6.0	.142	.083	.040	.122	.072	.035	.084	.050	.025	.049	.030	.015	.016	.010	.005	
7.0	.136	.076	.034	.117	.066	.030	.081	.046	.021	.047	.027	.013	.015	.009	.004	
8.0	.129	.070	.030	.111	.061	.026	.077	.043	.018	.045	.025	.011	.014	.008	.004	
9.0	.123	.065	.026	.106	.057	.023	.074	.040	.016	.043	.023	.010	.014	.008	.003	
10.0	.118	.061	.023	.101	.053	.020	.070	.037	.014	.041	.022	.009	.013	.007	.003	

C Range: 0 - 360DEG
 C Interval: 22.5DEG
 Test Speed: HIGH
 Temperature:24.6DEG
 Operators:Evan
 Test Date:2023-02-21

γ Range: 0 - 180DEG
 γ Interval: 1.0DEG
 Test System:EVERFINE GO-R5000_V2 SYSTEM V2.0.351
 Humidity:51%
 Test Distance:2.532m [K=1.0000]
 Remarks:

UGR(Unified Glare Rating) Table

Test:U:120.0V I:0.0936A P:10.45W PF:0.9301 Lamp Flux:636.69lx1 lm										
NAME: LED luminaire					TYPE:N/A			WEIGHT:N/A		
SPEC.:ASD-MPS-5D10CC-BK 3000K					DIM.: N/A			SERIAL No.:N/A		
MFR.: ASD LIGHTING CORP					SUR.:N/A			Shielding Angle:N/A		
ceiling/cavity	0.7	0.7	0.5	0.5	0.3	0.7	0.7	0.5	0.5	0.3
walls	0.5	0.3	0.5	0.3	0.3	0.5	0.3	0.5	0.3	0.3
working plane	0.2	0.2	0.2	0.2	0.2	0.2	0.2	0.2	0.2	0.2
Room dimensions	Viewed crosswise					Viewed endwise				
x = 2H y = 2H	22.6	24.1	22.8	24.3	24.5	22.8	24.3	23.0	24.5	24.7
3H	23.9	25.3	24.2	25.6	25.8	24.3	25.7	24.6	25.9	26.1
4H	24.4	25.7	24.7	26.0	26.3	24.9	26.2	25.2	26.4	26.7
6H	24.7	26.0	25.1	26.2	26.5	25.3	26.5	25.6	26.8	27.1
8H	24.8	26.0	25.1	26.3	26.6	25.4	26.6	25.7	26.9	27.2
12H	24.8	25.9	25.1	26.2	26.5	25.4	26.6	25.8	26.9	27.2
4H 2H	23.2	24.5	23.5	24.8	25.0	23.3	24.7	23.6	24.9	25.2
3H	24.7	25.9	25.1	26.2	26.5	25.0	26.2	25.4	26.5	26.8
4H	25.3	26.4	25.7	26.7	27.0	25.7	26.8	26.1	27.1	27.4
6H	25.7	26.7	26.1	27.0	27.4	26.2	27.2	26.6	27.5	27.9
8H	25.8	26.7	26.2	27.1	27.4	26.4	27.3	26.8	27.6	28.0
12H	25.8	26.6	26.3	27.0	27.4	26.5	27.3	26.9	27.7	28.1
8H 4H	25.6	26.4	26.0	26.8	27.2	25.9	26.8	26.4	27.2	27.6
6H	26.1	26.8	26.5	27.2	27.7	26.6	27.3	27.0	27.7	28.1
8H	26.2	26.9	26.7	27.3	27.8	26.8	27.5	27.3	27.9	28.3
12H	26.3	26.9	26.8	27.3	27.8	27.0	27.5	27.5	28.0	28.5
12H 4H	25.6	26.4	26.0	26.8	27.2	25.9	26.7	26.4	27.1	27.5
6H	26.1	26.8	26.6	27.2	27.7	26.6	27.2	27.1	27.7	28.1
8H	26.3	26.9	26.8	27.3	27.8	26.9	27.4	27.3	27.9	28.3
Variations with the observer position at spacings:										
S = 1.0H	+ 0.2 / - 0.2					+ 0.2 / - 0.2				
1.5H	+ 0.2 / - 0.4					+ 0.2 / - 0.3				
2.0H	+ 0.2 / - 0.3					+ 0.2 / - 0.3				

CIE Pub.117 Corrected 636.7 lm Total Lamp Luminous Flux. (8log(F/F0) = -1.6)

C Range: 0 - 360DEG
 C Interval: 22.5DEG
 Test Speed: HIGH
 Temperature:24.6DEG
 Operators:Evan
 Test Date:2023-02-21

γ Range: 0 - 180DEG
 γ Interval: 1.0DEG
 Test System:EVERFINE GO-R5000_V2 SYSTEM V2.0.351
 Humidity:51%
 Test Distance:2.532m [K=1.0000]
 Remarks:

UTILIZATION FACTORS TABLE

Test:U:120.0V I:0.0936A P:10.45W PF:0.9301 Lamp Flux:636.69lx1 lm		
NAME: LED luminaire	TYPE:N/A	WEIGHT:N/A
SPEC.:ASD-MPS-5D10CC-BK 3000K	DIM.: N/A	SERIAL No.:N/A
MFR.: ASD LIGHTING CORP	SUR.:N/A	Shielding Angle:N/A

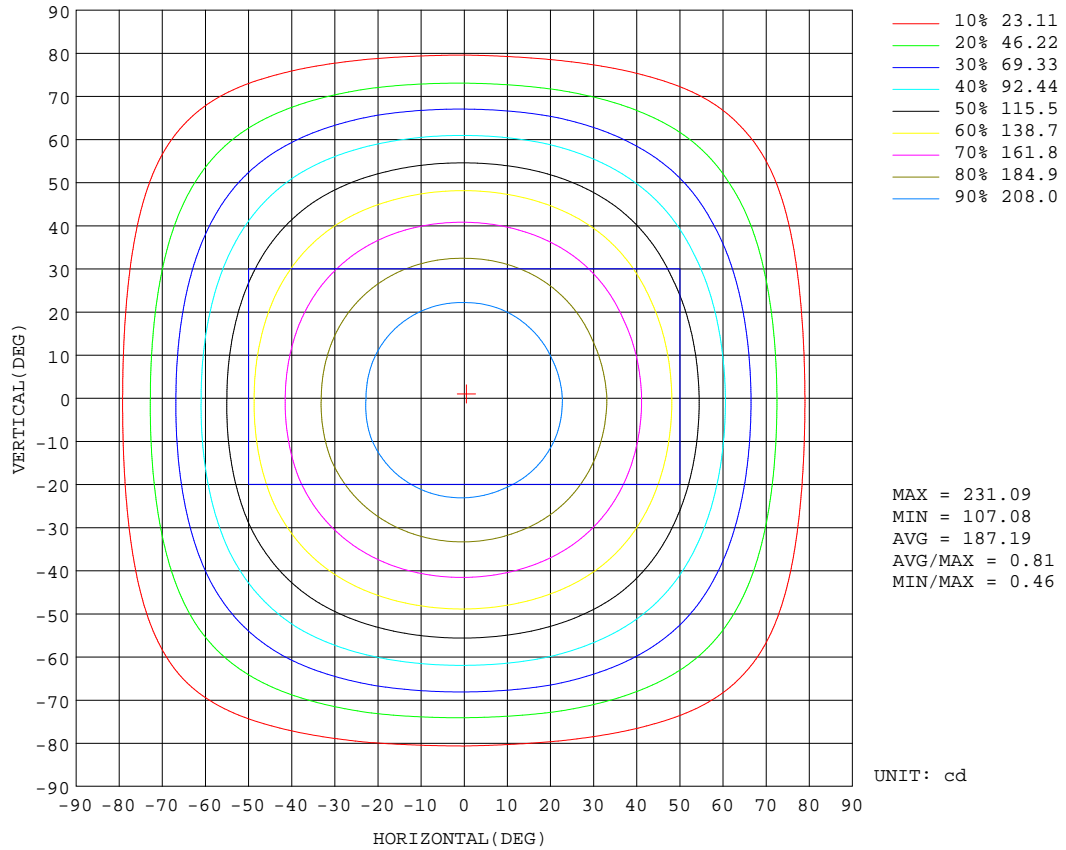
REFLECTANCE										
Ceiling	0.8	0.8	0.8	0.7	0.7	0.7	0.5	0.5	0.5	0
Walls	0.7	0.5	0.3	0.7	0.5	0.3	0.7	0.5	0.3	0
Working plane	0.2	0.2	0.2	0.2	0.2	0.2	0.2	0.2	0.2	0
ROOM INDEX	UTILIZATION FACTORS(PERCENT) $k(RI) \times RCR = 5$									
k = 0.60	58	46	40	57	46	39	56	46	39	33
0.80	68	57	49	67	56	49	65	55	49	42
1.00	77	66	58	75	65	58	73	66	58	50
1.25	84	73	66	82	73	66	80	71	65	58
1.50	89	79	72	87	78	72	84	76	70	63
2.00	95	87	81	94	86	80	90	84	78	71
2.50	99	92	86	97	90	85	93	88	83	75
3.00	103	96	91	100	94	89	96	91	87	79
4.00	107	101	97	104	99	95	100	96	92	84
5.00	109	104	100	107	102	99	102	99	96	87
ROOM INDEX	UF(total)									Direct
According to DIN EN 13032-2 2004			Suspended				SHRNOM = 1.25			

C Range: 0 - 360DEG
 C Interval: 22.5DEG
 Test Speed: HIGH
 Temperature:24.6DEG
 Operators:Evan
 Test Date:2023-02-21

γ Range: 0 - 180DEG
 γ Interval: 1.0DEG
 Test System:EVERFINE GO-R5000_V2 SYSTEM V2.0.351
 Humidity:51%
 Test Distance:2.532m [K=1.0000]
 Remarks:

ISOCANDELA DIAGRAM

Test:U:120.0V I:0.0936A P:10.45W PF:0.9301 Lamp Flux:636.69lx1 lm		
NAME: LED luminaire	TYPE:N/A	WEIGHT:N/A
SPEC.:ASD-MPS-5D10CC-BK 3000K	DIM.: N/A	SERIAL No.:N/A
MFR.: ASD LIGHTING CORP	SUR.:N/A	Shielding Angle:N/A

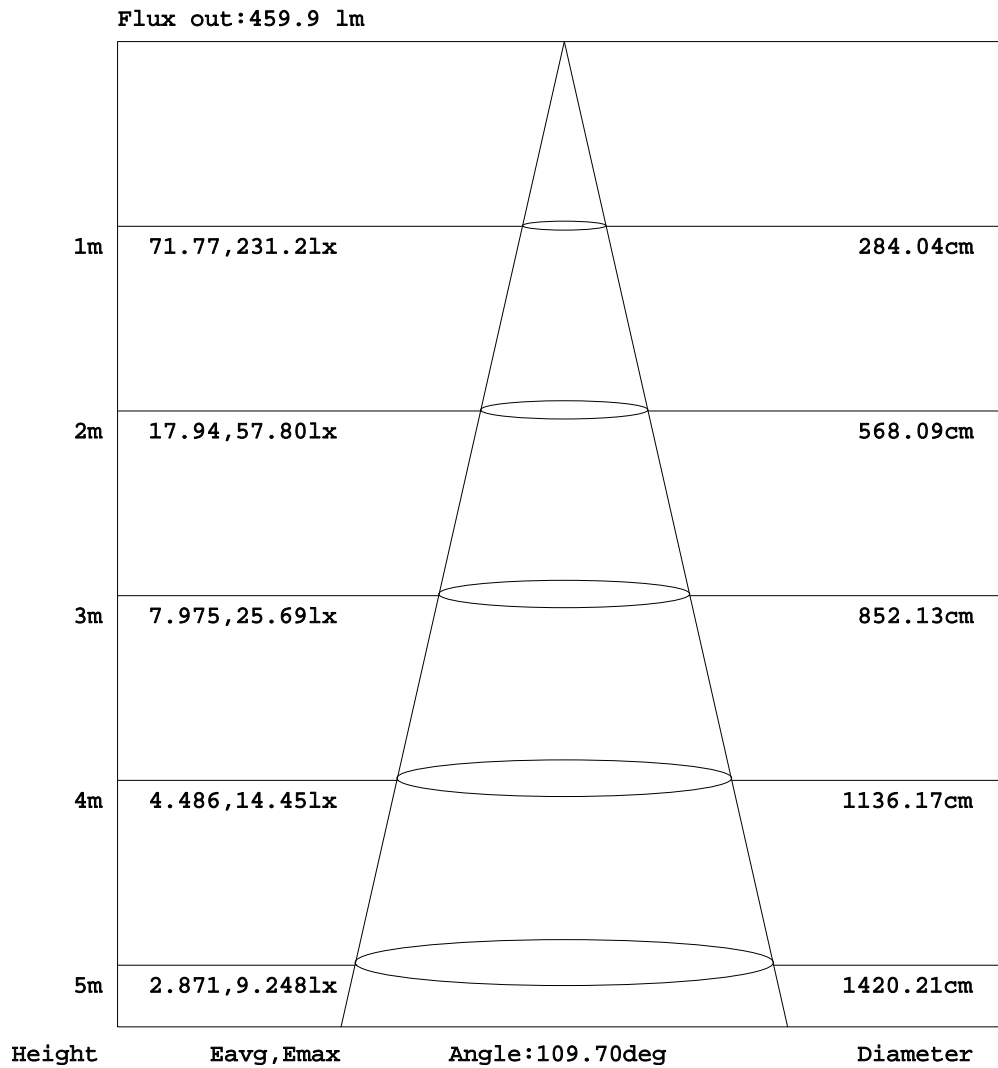


C Range: 0 - 360DEG
 C Interval: 22.5DEG
 Test Speed: HIGH
 Temperature:24.6DEG
 Operators:Evan
 Test Date:2023-02-21

γ Range: 0 - 180DEG
 γ Interval: 1.0DEG
 Test System:EVERFINE GO-R5000_V2 SYSTEM V2.0.351
 Humidity:51%
 Test Distance:2.532m [K=1.0000]
 Remarks:

AAI Figure

Test:U:120.0V I:0.0936A P:10.45W PF:0.9301 Lamp Flux:636.69lx1 lm		
NAME: LED luminaire	TYPE:N/A	WEIGHT:N/A
SPEC.:ASD-MPS-5D10CC-BK 3000K	DIM.: N/A	SERIAL No.:N/A
MFR.: ASD LIGHTING CORP	SUR.:N/A	Shielding Angle:N/A



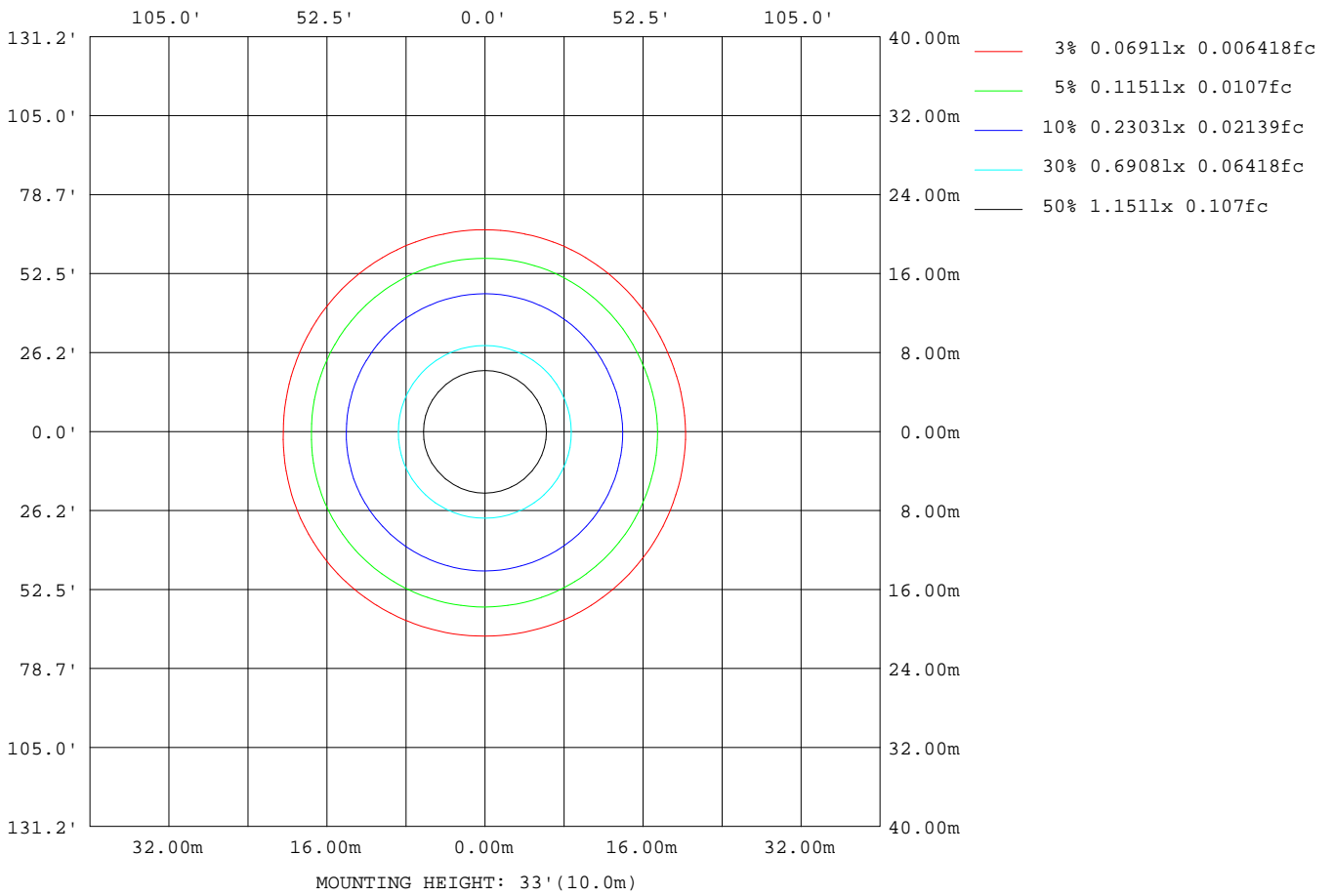
Note:The Curves indicate the illuminated area and the average illumination when the luminaire is at different distance.

C Range: 0 - 360DEG
 C Interval: 22.5DEG
 Test Speed: HIGH
 Temperature:24.6DEG
 Operators:Evan
 Test Date:2023-02-21

γ Range: 0 - 180DEG
 γ Interval: 1.0DEG
 Test System:EVERFINE GO-R5000_V2 SYSTEM V2.0.351
 Humidity:51%
 Test Distance:2.532m [K=1.0000]
 Remarks:

ISOLUX DIAGRAM

Test:U:120.0V I:0.0936A P:10.45W PF:0.9301 Lamp Flux:636.691x1 lm		
NAME: LED luminaire	TYPE:N/A	WEIGHT:N/A
SPEC.:ASD-MPS-5D10CC-BK 3000K	DIM.: N/A	SERIAL No.:N/A
MFR.: ASD LIGHTING CORP	SUR.:N/A	Shielding Angle:N/A



C Range: 0 - 360DEG
 C Interval: 22.5DEG
 Test Speed: HIGH
 Temperature:24.6DEG
 Operators:Evan
 Test Date:2023-02-21

γ Range: 0 - 180DEG
 γ Interval: 1.0DEG
 Test System:EVERFINE GO-R5000_V2 SYSTEM V2.0.351
 Humidity:51%
 Test Distance:2.532m [K=1.0000]
 Remarks:

LED Avg.L Report

Test:U:120.0V I:0.0936A P:10.45W PF:0.9301 Lamp Flux:636.69lx1 lm		
NAME: LED luminaire	TYPE:N/A	WEIGHT:N/A
SPEC.:ASD-MPS-5D10CC-BK 3000K	DIM.: N/A	SERIAL No.:N/A
MFR.: ASD LIGHTING CORP	SUR.:N/A	Shielding Angle:N/A

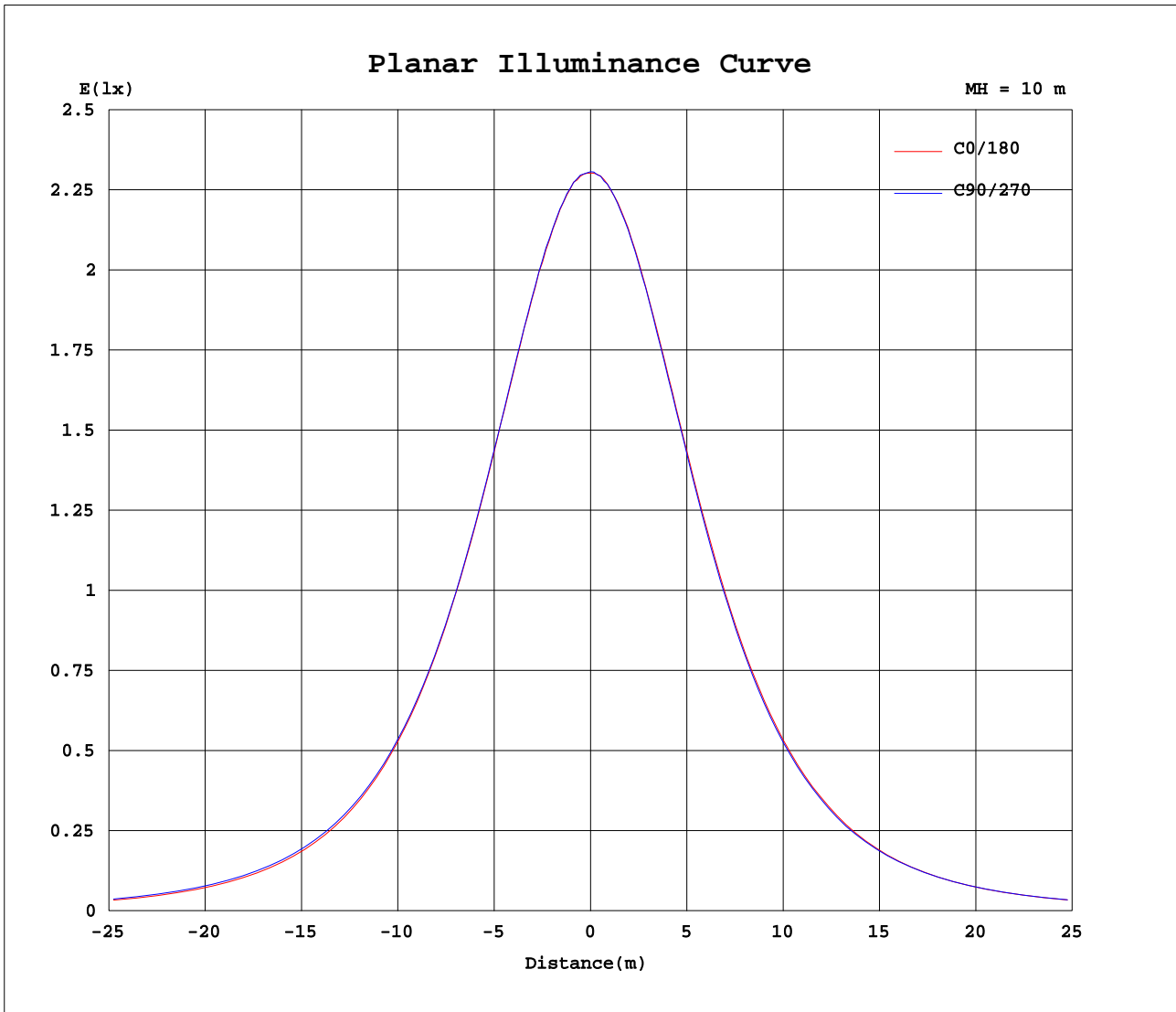
AvgL	cd/m2
L_0~180(65)av	14861
L_0~180(75)av	11954
L_0~180(85)av	5114
L_90~270(65)av	15489
L_90~270(75)av	13049
L_90~270(85)av	8394
L_45(65)av	15216
L_45(75)av	12431
L_45(85)av	6154

Standard: GB/T 29293-2012

C Range: 0 - 360DEG
 C Interval: 22.5DEG
 Test Speed: HIGH
 Temperature:24.6DEG
 Operators:Evan
 Test Date:2023-02-21

γ Range: 0 - 180DEG
 γ Interval: 1.0DEG
 Test System:EVERFINE GO-R5000_V2 SYSTEM V2.0.351
 Humidity:51%
 Test Distance:2.532m [K=1.0000]
 Remarks:

Planar Illuminance Curve



C Range: 0 - 360DEG
 C Interval: 22.5DEG
 Test Speed: HIGH
 Temperature: 24.6DEG
 Operators: Evan
 Test Date: 2023-02-21

γ Range: 0 - 180DEG
 γ Interval: 1.0DEG
 Test System: EVERFINE GO-R5000_V2 SYSTEM V2.0.351
 Humidity: 51%
 Test Distance: 2.532m [K=1.0000]
 Remarks:

LUMINOUS DISTRIBUTION INTENSITY DATA

Test:U:120.0V I:0.0936A P:10.45W PF:0.9301 Lamp Flux:636.691x1 lm		
NAME: LED luminaire	TYPE:N/A	WEIGHT:N/A
SPEC.:ASD-MPS-5D10CC-BK 3000K	DIM.: N/A	SERIAL No.:N/A
MFR.: ASD LIGHTING CORP	SUR.:N/A	Shielding Angle:N/A

Table--1

UNIT: cd

C(DEG) γ (DEG)	0	22.5	45	67.5	90	112.5	135	157.5	180	202.5	225	247.5	270	292.5	315	337.5			
0	231	231	231	231	231	231	231	231	231	231	231	231	231	231	231	231			
5	230	230	230	230	230	230	230	230	230	229	229	230	229	229	229	229			
10	226	226	226	226	226	226	227	227	226	226	226	226	226	226	225	225			
15	221	221	221	221	221	221	221	221	221	221	220	220	220	220	220	220			
20	213	213	213	213	213	213	214	214	213	213	213	212	212	212	212	212			
25	204	204	204	204	204	204	205	205	204	204	203	203	203	202	202	202			
30	193	193	193	193	193	193	194	194	193	192	192	191	191	191	191	191			
35	180	180	180	180	180	181	181	181	180	180	179	179	178	178	178	178			
40	166	166	166	166	166	167	167	167	166	166	165	165	164	164	164	163			
45	150	150	151	151	151	151	152	152	151	150	150	149	149	148	148	148			
50	132	133	134	135	135	135	136	136	135	134	134	133	132	132	132	131			
55	114	115	117	117	118	118	118	118	116	115	115	114	114	114	113	111			
60	94.7	95.5	97.8	99.5	99.7	100	100	99.4	96.6	96.3	96.8	96.4	95.9	95.6	93.8	92.6			
65	75.3	76.2	78.3	80.7	81.3	81.4	81.4	79.6	76.7	76.4	77.1	77.6	77.1	76.5	74.5	73.0			
70	55.9	56.8	58.9	61.7	61.9	62.6	61.5	59.8	57.0	56.6	57.5	58.6	57.8	57.3	55.0	53.8			
75	36.9	37.7	39.6	41.8	42.7	43.1	41.8	40.1	38.0	37.6	38.1	39.2	39.0	37.9	36.2	35.4			
80	19.8	20.6	21.9	23.9	25.2	25.0	23.4	22.5	20.5	20.2	20.3	21.3	21.7	20.4	19.0	18.5			
85	5.20	5.85	7.13	8.88	10.3	9.56	8.18	7.15	5.58	5.34	5.72	6.56	7.41	6.12	4.93	4.23			
90	0.04	0.04	0.05	0.04	0.03	0.05	0.12	0.18	0.02	0.00	0.00	0.00	0.01	0.00	0.01	0.00			
95	0.04	0.04	0.04	0.04	0.04	0.04	0.04	0.04	0.01	0.01	0.01	0.01	0.01	0.01	0.01	0.01			
100	0.05	0.05	0.05	0.06	0.05	0.06	0.05	0.04	0.01	0.01	0.01	0.03	0.01	0.02	0.02	0.01			
105	0.05	0.06	0.06	0.06	0.05	0.06	0.06	0.06	0.02	0.02	0.03	0.03	0.02	0.03	0.03	0.03			
110	0.06	0.06	0.07	0.07	0.06	0.06	0.07	0.06	0.03	0.03	0.04	0.04	0.03	0.04	0.04	0.04			
115	0.07	0.07	0.07	0.07	0.07	0.07	0.07	0.07	0.04	0.04	0.04	0.04	0.04	0.04	0.04	0.04			
120	0.07	0.08	0.08	0.08	0.08	0.08	0.08	0.08	0.04	0.05	0.05	0.05	0.05	0.05	0.05	0.05			
125	0.09	0.10	0.10	0.10	0.10	0.10	0.09	0.10	0.06	0.06	0.07	0.06	0.06	0.06	0.07	0.07			
130	0.11	0.12	0.12	0.12	0.12	0.12	0.12	0.11	0.07	0.07	0.08	0.08	0.08	0.08	0.08	0.08			
135	0.14	0.14	0.15	0.15	0.15	0.15	0.15	0.14	0.08	0.08	0.09	0.10	0.10	0.09	0.09	0.09			
140	0.18	0.19	0.20	0.19	0.20	0.19	0.19	0.18	0.10	0.10	0.11	0.11	0.11	0.11	0.11	0.10			
145	0.23	0.24	0.25	0.25	0.25	0.25	0.24	0.23	0.11	0.11	0.12	0.13	0.13	0.12	0.12	0.12			
150	0.26	0.28	0.29	0.29	0.30	0.29	0.28	0.27	0.12	0.12	0.12	0.13	0.14	0.13	0.12	0.13			
155	0.30	0.32	0.33	0.33	0.33	0.33	0.33	0.32	0.14	0.14	0.15	0.14	0.15	0.15	0.14	0.16			
160	0.34	0.35	0.35	0.36	0.35	0.35	0.35	0.35	0.17	0.16	0.17	0.16	0.16	0.16	0.16	0.18			
165	0.34	0.34	0.35	0.35	0.36	0.35	0.35	0.34	0.18	0.18	0.17	0.17	0.18	0.18	0.18	0.19			
170	0.32	0.32	0.32	0.33	0.33	0.32	0.33	0.33	0.20	0.20	0.19	0.19	0.19	0.19	0.19	0.21			
175	0.31	0.30	0.30	0.29	0.29	0.29	0.30	0.31	0.23	0.23	0.22	0.21	0.21	0.21	0.22	0.23			
180	0.27	0.26	0.25	0.24	0.24	0.25	0.27	0.28	0.27	0.27	0.26	0.25	0.24	0.25	0.25	0.27			

C Range: 0 - 360DEG
 C Interval: 22.5DEG
 Test Speed: HIGH
 Temperature:24.6DEG
 Operators:Evan
 Test Date:2023-02-21

γ Range: 0 - 180DEG
 γ Interval: 1.0DEG
 Test System:EVERFINE GO-R5000_V2 SYSTEM V2.0.351
 Humidity:51%
 Test Distance:2.532m [K=1.0000]
 Remarks: