



LED SLIM FLOODLIGHT

► **DESIGN & OPTIONS** - LED SLIM FLOODLIGHT consumes a lot less energy and is much more efficient than all other widely used floodlights. The die-cast aluminum housing design is adapted to maximize heat dissipation on the surface, accelerate the air circulation, protect the LED chips, and to ensure long-term functioning at 120V. You can choose either a 3,000K or 5,000K color temperature with a WHITE, BRONZE or BLACK finish.

► **INSTALLATION** - LED SLIM FLOODLIGHT with arm can be mounted directly to electrical boxes or to poles with 1/2" threaded inserts. A widened and thickened adjustable metal yoke bracket makes the light more stable. You can easily install it on ceilings, walls, the ground, and other locations by adjusting the bracket to different angles and following a few simple wiring steps. Refer to install instructions for detailed steps.

► **APPLICATION** - LED SLIM FLOODLIGHT is suitable for both indoor and outdoor applications such as: gardens, backyards, squares, factories, docks, stadiums, garages, streets, yards, exterior accent lighting for a house, outdoor shop lighting, or anywhere else lighting is needed. These lights are IP65 rated and can operate in temperatures between -4°+104°F (-20°+40°C), allowing them to be utilized in a wide variety of applications and climates.

► **ENERGY SAVINGS & EFFICIENCY** - With a lifespan of 97,000 hours, these fixtures are made to last decades under normal operation! This fixture can cut your electric bill by up to 80% instantly and will save you a significant amount of money in its lifetime.

► **CERTIFICATION & WARRANTY** - Buy with confidence: ASD provides a 5-year limited warranty along with UL certification to guarantee top quality products and safety!

Catalog number	
Notes	
Type	



Finish:	White
	Bronze
	Black

Model	Watts	Voltage	Dimmable	Lumens	CCT	Finish	Dimensions (LxWxH)	Cord	Bracket
ASD-FLSL-20N50A-BK	20W	120 V	-	2,040 lm	5,000 K	Black	6-5/8" x 1-5/8" x 4-7/8"	2 ft	Arm
ASD-FLSL-20N50A-BZ	20W	120 V	-	2,040 lm	5,000 K	Bronze	6-5/8" x 1-5/8" x 4-7/8"	2 ft	Arm
ASD-FLSL-20N50A-WH	20W	120 V	-	2,040 lm	5,000 K	White	6-5/8" x 1-5/8" x 4-7/8"	2 ft	Arm
ASD-FLSL-30N30A-BK	30W	120 V	-	3,056 lm	3,000 K	Black	7-1/4" x 1-3/4" x 5-7/8"	2 ft	Arm
ASD-FLSL-30N30A-BZ	30W	120 V	-	3,056 lm	3,000 K	Bronze	7-1/4" x 1-3/4" x 5-7/8"	2 ft	Arm
ASD-FLSL-30N30A-WH	30W	120 V	-	3,056 lm	3,000 K	White	7-1/4" x 1-3/4" x 5-7/8"	2 ft	Arm
ASD-FLSL-30N50A-BK	30W	120 V	-	3,056 lm	5,000 K	Black	7-1/4" x 1-3/4" x 5-7/8"	2 ft	Arm
ASD-FLSL-30N50A-BZ	30W	120 V	-	3,056 lm	5,000 K	Bronze	7-1/4" x 1-3/4" x 5-7/8"	2 ft	Arm
ASD-FLSL-30N50A-WH	30W	120 V	-	3,056 lm	5,000 K	White	7-1/4" x 1-3/4" x 5-7/8"	2 ft	Arm
ASD-FLSL-50N30A-BK	50W	120 V	-	5,100 lm	3,000 K	Black	9-1/8" x 1-7/8" x 8"	2 ft	Arm
ASD-FLSL-50N30A-BZ	50W	120 V	-	5,100 lm	3,000 K	Bronze	9-1/8" x 1-7/8" x 8"	2 ft	Arm
ASD-FLSL-50N30A-WH	50W	120 V	-	5,100 lm	3,000 K	White	9-1/8" x 1-7/8" x 8"	2 ft	Arm
ASD-FLSL-50N50A-BK	50W	120 V	-	5,100 lm	5,000 K	Black	9-1/8" x 1-7/8" x 8"	2 ft	Arm
ASD-FLSL-50N50A-BZ	50W	120 V	-	5,100 lm	5,000 K	Bronze	9-1/8" x 1-7/8" x 8"	2 ft	Arm
ASD-FLSL-50N50A-WH	50W	120 V	-	5,100 lm	5,000 K	White	9-1/8" x 1-7/8" x 8"	2 ft	Arm
ASD-FLSL-50N50Y-BK	50W	120 V	-	5,100 lm	5,000 K	Black	8-1/4" x 1-1/4" x 6-7/8"	2.4 ft	Yoke
ASD-FLSL-50N50Y-BZ	50W	120 V	-	5,100 lm	5,000 K	Bronze	8-1/4" x 1-1/4" x 6-7/8"	2.4 ft	Yoke
ASD-FLSL-100N50Y-BK	100W	120 V	-	10,200 lm	5,000 K	Black	12-7/8" x 1-3/8" x 9-7/8"	2.4 ft	Yoke
ASD-FLSL-100N50Y-BZ	100W	120 V	-	10,200 lm	5,000 K	Bronze	12-7/8" x 1-3/8" x 9-7/8"	2.4 ft	Yoke
ASD-FLSL-150N50Y-BK	150W	120 V	-	15,868 lm	5,000 K	Black	14-7/8" x 1-3/8" x 11-5/8"	2.4 ft	Yoke
ASD-FLSL-150N50Y-BZ	150W	120 V	-	15,868 lm	5,000 K	Bronze	14-7/8" x 1-3/8" x 11-5/8"	2.4 ft	Yoke
ASD-FLSL-200N50Y-BK	200W	120 V	-	21,404 lm	5,000 K	Black	16-3/8" x 1-5/8" x 13-1/8"	2.4 ft	Yoke
ASD-FLSL-200N50Y-BZ	200W	120 V	-	21,404 lm	5,000 K	Bronze	16-3/8" x 1-5/8" x 13-1/8"	2.4 ft	Yoke

For most up-to-date spec sheets please refer to asd-lighting.com

ASD LIGHTING CORP

E-mail: orders@asd-lighting.com | Web site: www.asd-lighting.com





LED SLIM FLOODLIGHT

PRODUCT SPECIFICATIONS:

Construction & Materials						
Housing	Aluminum					
Reflector	Aluminum					
Glass	Tempered glass					
Mounting	½" NPS threaded locking swivel arm			Yoke with ½" threaded fitting		
Finish	White, Bronze, Black					
Weight	ASD-FLSL-20N50A-BK	0.8 lb (0.4 kg)	ASD-FLSL-30N50A-BZ	1.1 lb (0.5 kg)	ASD-FLSL-50N50Y-BK	1.8 lb (0.8 kg)
	ASD-FLSL-20N50A-BZ		ASD-FLSL-30N50A-WH		ASD-FLSL-50N50Y-BZ	
	ASD-FLSL-20N50A-WH		ASD-FLSL-50N30A-BK	ASD-FLSL-100N50Y-BK	4 lb (1.8 kg)	
	ASD-FLSL-30N30A-BK	1.1 lb (0.5 kg)	ASD-FLSL-50N30A-BZ	1.9 lb (0.9 kg)	ASD-FLSL-150N50Y-BK	6.2 lb (2.8 kg)
	ASD-FLSL-30N30A-BZ		ASD-FLSL-50N30A-WH		ASD-FLSL-150N50Y-BZ	
	ASD-FLSL-30N30A-WH		ASD-FLSL-50N50A-BK		ASD-FLSL-200N50Y-BK	
	ASD-FLSL-30N50A-BK		ASD-FLSL-50N50A-BZ		ASD-FLSL-200N50Y-BZ	
	ASD-FLSL-50N50A-WH					
Environmental system						
Work environment	Suitable for Wet Locations, IP65					
Operating temperature	-4°F to 104°F (-20°C to 40°C)					
L-70 Life	R > 36,000 hrs. C > 97,000 hrs					
Optical system						
Luminous flux	ASD-FLSL-20N50A-BK	2,040 lm	ASD-FLSL-30N50A-BZ	3,056 lm	ASD-FLSL-50N50Y-BK	5,100 lm
	ASD-FLSL-20N50A-BZ		ASD-FLSL-30N50A-WH		ASD-FLSL-50N50Y-BZ	
	ASD-FLSL-20N50A-WH		ASD-FLSL-50N30A-BK	ASD-FLSL-100N50Y-BK	10,200 lm	
	ASD-FLSL-30N30A-BK	3,056 lm	ASD-FLSL-50N30A-BZ	5,100 lm	ASD-FLSL-100N50Y-BZ	15,868 lm
	ASD-FLSL-30N30A-BZ		ASD-FLSL-50N30A-WH		ASD-FLSL-150N50Y-BK	
	ASD-FLSL-30N30A-WH		ASD-FLSL-50N50A-BK		ASD-FLSL-150N50Y-BZ	
	ASD-FLSL-30N50A-BK		ASD-FLSL-50N50A-BZ		ASD-FLSL-200N50Y-BK	
	ASD-FLSL-50N50A-WH					
Color temperature	3,000K; 5,000 K					
CRI	> 70					
Electrical system						
Input voltage	120 V					
Max input current	ASD-FLSL-20N50A-BK	0.18 A	ASD-FLSL-30N50A-BZ	0.27 A	ASD-FLSL-50N50Y-BK	0.5 A
	ASD-FLSL-20N50A-BZ		ASD-FLSL-30N50A-WH		ASD-FLSL-50N50Y-BZ	
	ASD-FLSL-20N50A-WH		ASD-FLSL-50N30A-BK	ASD-FLSL-100N50Y-BK	0.9 A	
	ASD-FLSL-30N30A-BK	0.27 A	ASD-FLSL-50N30A-BZ	0.27 A	ASD-FLSL-100N50Y-BZ	1.37 A
	ASD-FLSL-30N30A-BZ		ASD-FLSL-50N30A-WH		ASD-FLSL-150N50Y-BK	
	ASD-FLSL-30N30A-WH		ASD-FLSL-50N50A-BK		ASD-FLSL-150N50Y-BZ	
	ASD-FLSL-30N50A-BK		ASD-FLSL-50N50A-BZ		ASD-FLSL-200N50Y-BK	
	ASD-FLSL-50N50A-WH					
AC input range	min 110 V max 130 V					
Off state power	0W					
Power consumption	ASD-FLSL-20N50A-BK	20W	ASD-FLSL-30N50A-BZ	30W	ASD-FLSL-50N50Y-BK	50W
	ASD-FLSL-20N50A-BZ		ASD-FLSL-30N50A-WH		ASD-FLSL-50N50Y-BZ	
	ASD-FLSL-20N50A-WH		ASD-FLSL-50N30A-BK	ASD-FLSL-100N50Y-BK	100W	
	ASD-FLSL-30N30A-BK	30W	ASD-FLSL-50N30A-BZ	50W	ASD-FLSL-100N50Y-BZ	150W
	ASD-FLSL-30N30A-BZ		ASD-FLSL-50N30A-WH		ASD-FLSL-150N50Y-BK	
	ASD-FLSL-30N30A-WH		ASD-FLSL-50N50A-BK		ASD-FLSL-150N50Y-BZ	
	ASD-FLSL-30N50A-BK		ASD-FLSL-50N50A-BZ		ASD-FLSL-200N50Y-BK	
	ASD-FLSL-50N50A-WH					
Power factor	> 0.9					
Output voltage	270 V			for models 20W: 252 V		
Max output current	ASD-FLSL-20N50A-BK	72 mA	ASD-FLSL-30N50A-BZ	100 mA	ASD-FLSL-50N50Y-BK	167 mA
	ASD-FLSL-20N50A-BZ		ASD-FLSL-30N50A-WH		ASD-FLSL-50N50Y-BZ	
	ASD-FLSL-20N50A-WH		ASD-FLSL-50N30A-BK	ASD-FLSL-100N50Y-BK	334 mA	
	ASD-FLSL-30N30A-BK	100 mA	ASD-FLSL-50N30A-BZ	167 mA	ASD-FLSL-100N50Y-BZ	500 mA
	ASD-FLSL-30N30A-BZ		ASD-FLSL-50N30A-WH		ASD-FLSL-150N50Y-BK	
	ASD-FLSL-30N30A-WH		ASD-FLSL-50N50A-BK		ASD-FLSL-150N50Y-BZ	
	ASD-FLSL-30N50A-BK		ASD-FLSL-50N50A-BZ		ASD-FLSL-200N50Y-BK	
	ASD-FLSL-50N50A-WH					
Surge protection DM/CM	1 kV / 2 kV			for models 20W: 0.5 kV / 1 kV		
LED driver class	Class 1					
Regular and voluntary certifications						
5-year limited warranty						
UL certified E473804						

For most up-to-date spec sheets please refer to asd-lighting.com



LED SLIM FLOODLIGHT

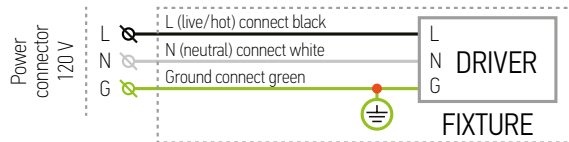
INSTALLATION GUIDE

IMPORTANT SAFETY INFORMATION:

Please read all the instructions below before installation.

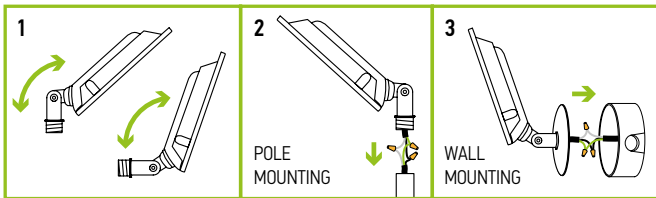
- ▶ Make sure that the supply voltage corresponds to the rated product voltage.
- ▶ The product must be installed by a qualified electrician in accordance with the National Electrical Code and corresponding local codes.
- ▶ If the product is damaged, do not use it.

ELECTRICAL SCHEMATIC DIAGRAM:



MODELS WITH ARM INSTALLATION STEPS:

1. Turn off the main power and then adjust the arm. The arm allows you to choose the necessary light direction and set the desired angle for the lighting fixture.
2. **Pole installation:** The floodlight can be mounted directly to a pole with a 1/2" threaded insert. Connect the wires: Black to Black, White to White, Green to Green. Secure the connection with Wire Nuts.
3. **J-box installation:** The floodlight can be mounted directly to an electrical box. Connect the wires: Black to Black, White to White, Green to Green. Secure the connection with Wire Nuts.



The LED Slim Floodlight with arm is designed to install as a surface mounted luminaire.

PACKAGE CONTENTS:

Description	Q-ty
LED Slim Floodlight	1
Wire nut (A)	3
Box	1



⚠ WARNING

RISK OF PERSONAL INJURY – READ and follow all WARNINGS and installation instructions. Keep or give to the owner for future reference.

Risk of cuts: Wear gloves to prevent cuts or abrasions when removing from carton, handling, installing, and maintaining this product.

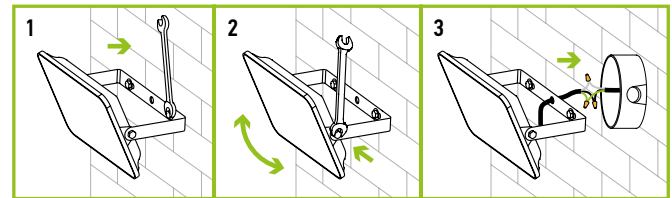
Risk of electric shock: This product must be installed in accordance with the applicable installation code by a person familiar with the construction and operation of the product and the hazards involved.

Risk of Fire: Minimum 194°F supply conductors. Consult a qualified electrician to ensure correct branch circuit conductor.

ASD® assumes no responsibility for claims arising out of improper or careless Installation or handling of this product.

MODELS ON YOKE INSTALLATION STEPS:

1. Install the bracket to your mounting surface.
2. Adjust fixture to desired angle by loosening and tightening bolts on both sides of the bracket.
3. Connect the wires: Black to Black, White to White, Green to Green. Secure the connection with Wire Nuts.



The LED Slim Floodlight with yoke is designed to install as a surface mounted luminaire.

ORDERING INFORMATION

Model	UPC	Pcs. per carton	Carton size	Carton weight	GTIN 14
ASD-FLSL-20N50A-BK	819201027125	10	10.1" x 9.3" x 7.3"	10.6 lb	30819201027126
ASD-FLSL-20N50A-BZ	810050731911	10	10.1" x 9.3" x 7.3"	10.6 lb	30810050731912
ASD-FLSL-20N50A-WH	819201027163	10	10.1" x 9.3" x 7.3"	10.6 lb	30819201027164
ASD-FLSL-30N30A-BK	819201027187	10	12" x 9.4" x 7.9"	14 lb	40819201027185
ASD-FLSL-30N30A-BZ	810050731928	10	12" x 9.4" x 7.9"	14 lb	40810050731926
ASD-FLSL-30N30A-WH	819201027194	10	12" x 9.4" x 7.9"	14 lb	30819201027195
ASD-FLSL-30N50A-BK	819201027170	10	12" x 9.4" x 7.9"	14 lb	30819201027171
ASD-FLSL-30N50A-BZ	810050731935	10	12" x 9.4" x 7.9"	14 lb	30810050731936
ASD-FLSL-30N50A-WH	819201027200	10	12" x 9.4" x 7.9"	14 lb	30819201027201
ASD-FLSL-50N30A-BK	819201027217	10	18.5" x 10.2" x 8.7"	23.2 lb	30819201027218
ASD-FLSL-50N30A-BZ	810050731942	10	18.5" x 10.2" x 8.7"	23.2 lb	30810050731943
ASD-FLSL-50N30A-WH	819201027224	10	18.5" x 10.2" x 8.7"	23.2 lb	30819201027225
ASD-FLSL-50N50A-BK	819201027231	10	18.5" x 10.2" x 8.7"	23.2 lb	30819201027232
ASD-FLSL-50N50A-BZ	810050731959	10	18.5" x 10.2" x 8.7"	23.2 lb	30810050731950
ASD-FLSL-50N50A-WH	819201027248	10	18.5" x 10.2" x 8.7"	23.2 lb	30819201027249
ASD-FLSL-50N50Y-BK	819201027255	10	15.4" x 8.7" x 7.5"	7.7 lb	40819201027253
ASD-FLSL-50N50Y-BZ	810050731966	10	15.4" x 8.7" x 7.5"	23 lb	30810050731967
ASD-FLSL-100N50Y-BK	819201027279	4	13.2" x 10.3" x 7.3"	20.7 lb	40819201027277
ASD-FLSL-100N50Y-BZ	810050731973	4	13.2" x 10.3" x 7.3"	18.8 lb	30810050731974
ASD-FLSL-150N50Y-BK	819201027293	4	15.2" x 12.1" x 7.3"	27.2 lb	30819201027294
ASD-FLSL-150N50Y-BZ	810050731980	4	15.2" x 12.1" x 7.3"	27.5 lb	40810050731988
ASD-FLSL-200N50Y-BK	819201027309	4	16.7" x 13.7" x 7.5"	34.6 lb	30819201027300
ASD-FLSL-200N50Y-BZ	810050731997	4	16.7" x 13.7" x 7.5"	34.6 lb	30810050731998

For most up-to-date spec sheets please refer to asd-lighting.com

