

ASD[®] LED DISK LIGHT

► **DESIGN & OPTIONS** - LED DISK LIGHTS have a classic, low-profile design that allows you to have a stylish look with efficient lighting. Smooth dimming capabilities ranging from 100% to 10% with modern LED dimmers allow you to control the look and feel of your space. You can choose either a 3000K, 4000K or 5000K color temperature. The 120° beam angle and CRI90+ grants you smooth and even lighting. It comes in three sizes: 4", 6", and 9.5" with three finish options: WHITE, BRUSHED NICKEL, and BRONZE.

► **INSTALLATION** - LED DISK LIGHT can be installed either on an existing outlet box or a remodeled can using our retrofit kit (sold separately). This fixture is suitable for most new construction, remodeling, and shallow recessed lighting housings. Refer to install instructions for detailed steps.

► **APPLICATION** - Install the LED DISK LIGHT to the ceiling for bright light in your family room, bedroom, hallways, corridors, or any other common areas in your living space. It is suitable for Wet locations, making it perfect for kitchen and bathroom lighting as well. You could also use it as a complimentary light to an existing ceiling light.

► **ENERGY SAVING & EFFICIENCY** - Replacing an incandescent fixture with LED DISK LIGHT can save you 8 times as much on your current energy costs. With a lifespan of 50,000 hours, these fixtures are made to last decades under normal operation! This fixture will save you a significant amount of money in its lifetime.

► **CERTIFICATION & WARRANTY** - Buy with confidence: ASD provides a 5-year warranty along with ETL and ENERGY STAR certifications to guarantee top quality products and safety!

Top US certifications allow participation in rebates; please check the rebate programs available in your state.

Catalog number	
Notes	
Type	



PRODUCT LEGEND:

Family	Size	Dimming	Watts	CCT	Finish
ASD-LDS	X	D	XX	XX	XX
LED Disk Light LDS series	4 = 4 inch	Dimmable	10 = 10 W	30 = 3,000 K	WH = White
	6 = 6 inch		15 = 15 W	40 = 4,000 K	BZ = Oil Rubbed Bronze
	9.5 = 9.5 inch		20 = 20 W	50 = 5,000 K	NK = Brushed Nickel

LED DISK LIGHT:

Model	Size	Watts	Voltage	Dimming	Lumens	CCT	Finish	Dimensions (DxH)
ASD-LDS-4D1030-WH	4"	10 W	120 V	TRIAC	650 lm	3,000 K	White	5 7/8" x 5 7/8" x 7/8"
ASD-LDS-4D1040-WH	4"	10 W	120 V	TRIAC	650 lm	4,000 K	White	5 7/8" x 5 7/8" x 7/8"
ASD-LDS-4D1050-WH	4"	10 W	120 V	TRIAC	650 lm	5,000 K	White	5 7/8" x 5 7/8" x 7/8"
ASD-LDS-4D1030-BZ	4"	10 W	120 V	TRIAC	650 lm	3,000 K	Oil Rubbed Bronze	5 7/8" x 5 7/8" x 7/8"
ASD-LDS-4D1040-BZ	4"	10 W	120 V	TRIAC	650 lm	4,000 K	Oil Rubbed Bronze	5 7/8" x 5 7/8" x 7/8"
ASD-LDS-4D1050-BZ	4"	10 W	120 V	TRIAC	650 lm	5,000 K	Oil Rubbed Bronze	5 7/8" x 5 7/8" x 7/8"
ASD-LDS-4D1030-NK	4"	10 W	120 V	TRIAC	650 lm	3,000 K	Brushed Nickel	5 7/8" x 5 7/8" x 7/8"
ASD-LDS-4D1040-NK	4"	10 W	120 V	TRIAC	650 lm	4,000 K	Brushed Nickel	5 7/8" x 5 7/8" x 7/8"
ASD-LDS-4D1050-NK	4"	10 W	120 V	TRIAC	650 lm	5,000 K	Brushed Nickel	5 7/8" x 5 7/8" x 7/8"
ASD-LDS-6D1530-WH	6"	15 W	120 V	TRIAC	1,200 lm	3,000 K	White	7 5/16" x 7 5/16" x 7/8"
ASD-LDS-6D1540-WH	6"	15 W	120 V	TRIAC	1,300 lm	4,000 K	White	7 5/16" x 7 5/16" x 7/8"
ASD-LDS-6D1550-WH	6"	15 W	120 V	TRIAC	1,300 lm	5,000 K	White	7 5/16" x 7 5/16" x 7/8"
ASD-LDS-6D1530-BZ	6"	15 W	120 V	TRIAC	1,200 lm	3,000 K	Oil Rubbed Bronze	7 5/16" x 7 5/16" x 7/8"
ASD-LDS-6D1540-BZ	6"	15 W	120 V	TRIAC	1,300 lm	4,000 K	Oil Rubbed Bronze	7 5/16" x 7 5/16" x 7/8"
ASD-LDS-6D1550-BZ	6"	15 W	120 V	TRIAC	1,300 lm	5,000 K	Oil Rubbed Bronze	7 5/16" x 7 5/16" x 7/8"
ASD-LDS-6D1530-NK	6"	15 W	120 V	TRIAC	1,200 lm	3,000 K	Brushed Nickel	7 5/16" x 7 5/16" x 7/8"
ASD-LDS-6D1540-NK	6"	15 W	120 V	TRIAC	1,300 lm	4,000 K	Brushed Nickel	7 5/16" x 7 5/16" x 7/8"
ASD-LDS-6D1550-NK	6"	15 W	120 V	TRIAC	1,300 lm	5,000 K	Brushed Nickel	7 5/16" x 7 5/16" x 7/8"
ASD-LDS-9.5D2030-WH	9.5"	20 W	120 V	TRIAC	1,500 lm	3,000 K	White	9 3/8" x 9 3/8" x 1 3/8"
ASD-LDS-9.5D2040-WH	9.5"	20 W	120 V	TRIAC	1,500 lm	4,000 K	White	9 3/8" x 9 3/8" x 1 3/8"
ASD-LDS-9.5D2050-WH	9.5"	20 W	120 V	TRIAC	1,500 lm	5,000 K	White	9 3/8" x 9 3/8" x 1 3/8"
ASD-LDS-9.5D2030-BZ	9.5"	20 W	120 V	TRIAC	1,500 lm	3,000 K	Oil Rubbed Bronze	9 3/8" x 9 3/8" x 1 3/8"
ASD-LDS-9.5D2040-BZ	9.5"	20 W	120 V	TRIAC	1,500 lm	4,000 K	Oil Rubbed Bronze	9 3/8" x 9 3/8" x 1 3/8"
ASD-LDS-9.5D2050-BZ	9.5"	20 W	120 V	TRIAC	1,500 lm	5,000 K	Oil Rubbed Bronze	9 3/8" x 9 3/8" x 1 3/8"

For most up-to-date spec sheets please refer to asd-lighting.com



LED DISK LIGHT

PRODUCT SPECIFICATIONS:

Construction & Materials						
Diffuser	White Acrylic					
Housing	Iron					
Finish	White, Oil Rubbed Bronze, Brushed Nickel					
Weight	ASD-LDS-4D1030-WH	0.4 lb (0.2 kg)	ASD-LDS-6D1530-WH	0.6 lb (0.3 kg)	ASD-LDS-9.5D2030-WH	1.2 lb (0.6 kg)
	ASD-LDS-4D1040-WH		ASD-LDS-6D1540-WH		ASD-LDS-9.5D2040-WH	
	ASD-LDS-4D1050-WH		ASD-LDS-6D1550-WH		ASD-LDS-9.5D2050-WH	
	ASD-LDS-4D1030-BZ		ASD-LDS-6D1530-BZ		ASD-LDS-9.5D2030-BZ	
	ASD-LDS-4D1040-BZ		ASD-LDS-6D1540-BZ		ASD-LDS-9.5D2040-BZ	
	ASD-LDS-4D1050-BZ		ASD-LDS-6D1550-BZ		ASD-LDS-9.5D2050-BZ	
	ASD-LDS-4D1030-NK		ASD-LDS-6D1530-NK			
	ASD-LDS-4D1040-NK		ASD-LDS-6D1540-NK			
ASD-LDS-4D1050-NK	ASD-LDS-6D1550-NK					
Environmental System						
Work Environment	Suitable for Wet Locations					
Operating Temperature	-4°F to 104°F (-20°C to 40°C)					
L-70 Life	> 50,000 hrs					
Optical System						
Luminous Flux	ASD-LDS-4D1030-WH	650 lm	ASD-LDS-6D1530-WH	1,200 lm	ASD-LDS-9.5D2030-WH	1,500 lm
	ASD-LDS-4D1040-WH		ASD-LDS-6D1540-WH		ASD-LDS-9.5D2040-WH	
	ASD-LDS-4D1050-WH		ASD-LDS-6D1550-WH		ASD-LDS-9.5D2050-WH	
	ASD-LDS-4D1030-BZ		ASD-LDS-6D1530-BZ		ASD-LDS-9.5D2030-BZ	
	ASD-LDS-4D1040-BZ		ASD-LDS-6D1540-BZ		ASD-LDS-9.5D2040-BZ	
	ASD-LDS-4D1050-BZ		ASD-LDS-6D1550-BZ		ASD-LDS-9.5D2050-BZ	
	ASD-LDS-4D1030-NK		ASD-LDS-6D1530-NK			
	ASD-LDS-4D1040-NK		ASD-LDS-6D1540-NK			
ASD-LDS-4D1050-NK	ASD-LDS-6D1550-NK					
Color Temperature	3,000 K, 4,000 K, 5,000 K					
CRI	> 90					
Electrical System						
Input Voltage	120 V					
Max input current	ASD-LDS-4D1030-WH	0.1 A	ASD-LDS-6D1530-WH	0.15 A	ASD-LDS-9.5D2030-WH	0.185 A
	ASD-LDS-4D1040-WH		ASD-LDS-6D1540-WH		ASD-LDS-9.5D2040-WH	
	ASD-LDS-4D1050-WH		ASD-LDS-6D1550-WH		ASD-LDS-9.5D2050-WH	
	ASD-LDS-4D1030-BZ		ASD-LDS-6D1530-BZ		ASD-LDS-9.5D2030-BZ	
	ASD-LDS-4D1040-BZ		ASD-LDS-6D1540-BZ		ASD-LDS-9.5D2040-BZ	
	ASD-LDS-4D1050-BZ		ASD-LDS-6D1550-BZ		ASD-LDS-9.5D2050-BZ	
	ASD-LDS-4D1030-NK		ASD-LDS-6D1530-NK			
	ASD-LDS-4D1040-NK		ASD-LDS-6D1540-NK			
ASD-LDS-4D1050-NK	ASD-LDS-6D1550-NK					
Inrush current (Action time)	ASD-LDS-4D1030-WH	0.2 A (0.01 S)	ASD-LDS-6D1530-WH	0.2 A (0.01 S)	ASD-LDS-9.5D2030-WH	0.248 A (0.68 S)
	ASD-LDS-4D1040-WH		ASD-LDS-6D1540-WH		ASD-LDS-9.5D2040-WH	
	ASD-LDS-4D1050-WH		ASD-LDS-6D1550-WH		ASD-LDS-9.5D2050-WH	
	ASD-LDS-4D1030-BZ		ASD-LDS-6D1530-BZ		ASD-LDS-9.5D2030-BZ	
	ASD-LDS-4D1040-BZ		ASD-LDS-6D1540-BZ		ASD-LDS-9.5D2040-BZ	
	ASD-LDS-4D1050-BZ		ASD-LDS-6D1550-BZ		ASD-LDS-9.5D2050-BZ	
	ASD-LDS-4D1030-NK		ASD-LDS-6D1530-NK			
	ASD-LDS-4D1040-NK		ASD-LDS-6D1540-NK			
ASD-LDS-4D1050-NK	ASD-LDS-6D1550-NK					
AC input range	ASD-LDS-4D1030-WH	min 100 V max 135	ASD-LDS-6D1530-WH	min 100 V max 135	ASD-LDS-9.5D2030-WH	min 108 V max 132
	ASD-LDS-4D1040-WH		ASD-LDS-6D1540-WH		ASD-LDS-9.5D2040-WH	
	ASD-LDS-4D1050-WH		ASD-LDS-6D1550-WH		ASD-LDS-9.5D2050-WH	
	ASD-LDS-4D1030-BZ		ASD-LDS-6D1530-BZ		ASD-LDS-9.5D2030-BZ	
	ASD-LDS-4D1040-BZ		ASD-LDS-6D1540-BZ		ASD-LDS-9.5D2040-BZ	
	ASD-LDS-4D1050-BZ		ASD-LDS-6D1550-BZ		ASD-LDS-9.5D2050-BZ	
	ASD-LDS-4D1030-NK		ASD-LDS-6D1530-NK			
	ASD-LDS-4D1040-NK		ASD-LDS-6D1540-NK			
ASD-LDS-4D1050-NK	ASD-LDS-6D1550-NK					
Off State Power	0 W					

For most up-to-date spec sheets please refer to asd-lighting.com



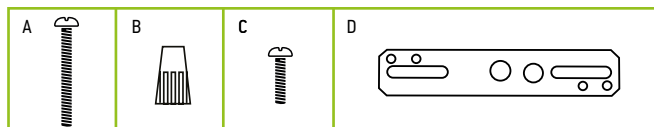
LED DISK LIGHT

Electrical System						
Power Consumption	ASD-LDS-4D1030-WH	10 W	ASD-LDS-6D1530-WH	15 W	ASD-LDS-9.5D2030-WH	20 W
	ASD-LDS-4D1040-WH		ASD-LDS-6D1540-WH		ASD-LDS-9.5D2040-WH	
	ASD-LDS-4D1050-WH		ASD-LDS-6D1550-WH		ASD-LDS-9.5D2050-WH	
	ASD-LDS-4D1030-BZ		ASD-LDS-6D1530-BZ		ASD-LDS-9.5D2030-BZ	
	ASD-LDS-4D1040-BZ		ASD-LDS-6D1540-BZ		ASD-LDS-9.5D2040-BZ	
	ASD-LDS-4D1050-BZ		ASD-LDS-6D1550-BZ		ASD-LDS-9.5D2050-BZ	
	ASD-LDS-4D1030-NK		ASD-LDS-6D1530-NK			
	ASD-LDS-4D1040-NK		ASD-LDS-6D1540-NK			
	ASD-LDS-4D1050-NK		ASD-LDS-6D1550-NK			
Power Factor	> 0.9					
Output voltage	132 V					
Max output current	ASD-LDS-4D1030-WH	67 mA	ASD-LDS-6D1530-WH	100 mA	ASD-LDS-9.5D2030-WH	166 mA
	ASD-LDS-4D1040-WH		ASD-LDS-6D1540-WH		ASD-LDS-9.5D2040-WH	
	ASD-LDS-4D1050-WH		ASD-LDS-6D1550-WH		ASD-LDS-9.5D2050-WH	
	ASD-LDS-4D1030-BZ		ASD-LDS-6D1530-BZ		ASD-LDS-9.5D2030-BZ	
	ASD-LDS-4D1040-BZ		ASD-LDS-6D1540-BZ		ASD-LDS-9.5D2040-BZ	
	ASD-LDS-4D1050-BZ		ASD-LDS-6D1550-BZ		ASD-LDS-9.5D2050-BZ	
	ASD-LDS-4D1030-NK		ASD-LDS-6D1530-NK			
	ASD-LDS-4D1040-NK		ASD-LDS-6D1540-NK			
	ASD-LDS-4D1050-NK		ASD-LDS-6D1550-NK			
LED Driver Class	DOB					

Dimming range			
10-100%			
Dimming Compatible Controls			
Brand	Lutron		Leviton
Models	DVCL-153P-WH	DVLV-603P-IV	S-600P
	MACL-153M-WH	CTCL-153PDH	S-603P
	CT-603PG	DWW-603PGH-WH	
	DV-600P	SLV-600P-WH	
		6672	1F4205
		0B33K1	6633-P
		1E1205	6674
		6631	
Regular and Voluntary Certifications			
5-year limited warranty	ETL certified 4008281	Energy Star listed	

PACKAGE CONTENTS:

Description	Q-ty
LED Disk Light Fixture	1
1-1/2 in. machine screws (A)	2
Wire Nuts (B)	3
1/2 in. machine screws (C)	2
Crossbar (D) for models 4"	1
Box	1
Cut sheet	2



INSTALLATION GUIDE

IMPORTANT SAFETY INFORMATION:

Please read all the instructions below before installation.

- ▶ Make sure that the supply voltage corresponds to the rated product voltage.
- ▶ The product must be installed by a qualified electrician in accordance with the National Electrical Code and corresponding local codes.
- ▶ If the product is damaged, do not use it.

⚠ WARNING

RISK OF PERSONAL INJURY – READ and follow all WARNINGS and installation instructions.

Keep or give to the owner for future reference.

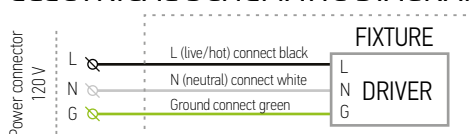
Risk of cuts: Wear gloves to prevent cuts or abrasions when removing from carton, handling, installing, and maintaining this product.

Risk of electric shock: This product must be installed in accordance with the applicable installation code by a person familiar with the construction and operation of the product and the hazards involved.

Risk of Fire: Minimum 194°F supply conductors. Consult a qualified electrician to ensure correct branch circuit conductor.

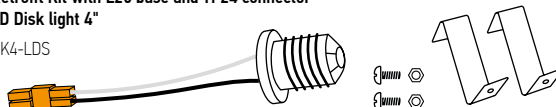
ASD® assumes no responsibility for claims arising out of improper or careless installation or handling of this product.

ELECTRICAL SCHEMATIC DIAGRAM:




ACCESSORIES (sold separately):

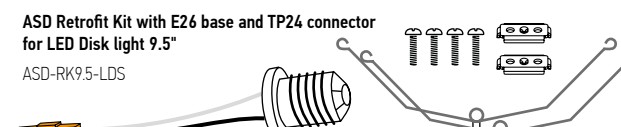
ASD Retrofit Kit with E26 base and TP24 connector for LED Disk light 4"
ASD-RK4-LDS



ASD Retrofit Kit with E26 base and TP24 connector for LED Disk light 6"
ASD-RK6-LDS



ASD Retrofit Kit with E26 base and TP24 connector for LED Disk light 9.5"
ASD-RK9.5-LDS



For most up-to-date spec sheets please refer to asd-lighting.com

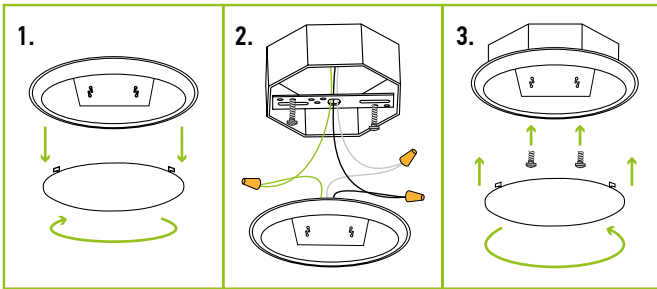


LED DISK LIGHT

INSTALLATION STEPS

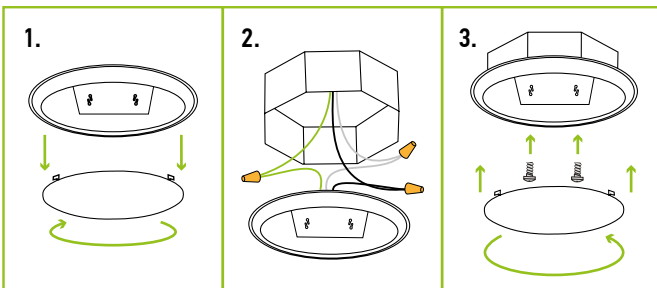
JUNCTION BOX INSTALLATION 4"

1. Remove the Lens by turning it counter clockwise.
2. Attach the Crossbar to the Outlet box using Screws. Connect the wires: Black to Black, White to White, Green to Green. Secure the connection with Wire Nuts. Tuck all the wires into the Outlet box.
3. Align two holes in the fixture with Crossbar. Use screws to attach one to another. Do not over tighten. Place the Lens back and turn it clockwise to fix.



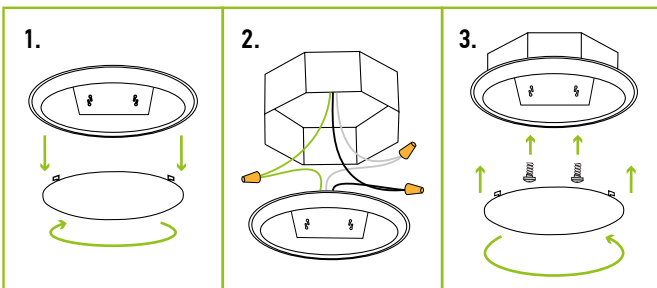
JUNCTION BOX INSTALLATION 6"

1. Remove the Lens by turning it counter clockwise.
2. Connect the wires: Black to Black, White to White, Green to Green. Secure the connection with Wire Nuts. Tuck all the wires into the Outlet box.
3. Align two holes in the fixture with Outlet box. Use screws to attach one to another. Do not over tighten. Place the Lens back and turn it clockwise to fix.



JUNCTION BOX INSTALLATION 9.5"

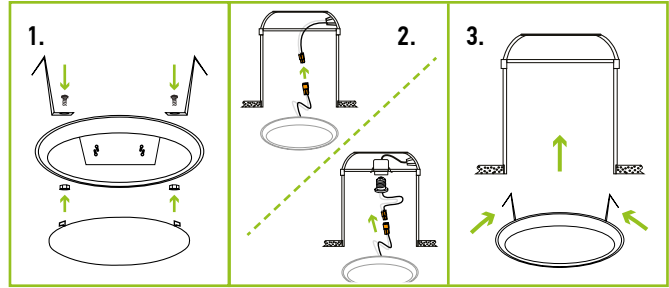
1. Remove the Lens by turning it counter clockwise.
2. Connect the wires: Black to Black, White to White, Green to Green. Secure the connection with Wire Nuts. Tuck all the wires into the Outlet box.
3. Align two holes in the fixture with Outlet box. Use screws to attach one to another. Do not over tighten. Place the Lens back and turn it clockwise to fix.



RECESSES CAN INSTALLATION 4" sold separately

ASD-RK4-LDS

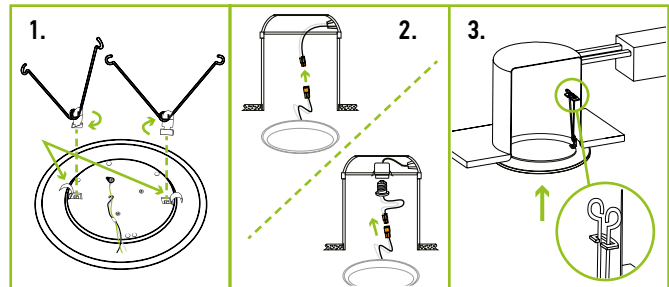
1. Remove the existing fixture. Remove the Lens by turning it counter clockwise. Attach remodeled clips. Secure with screws and nut. Place the Lens back and turn it clockwise.
2. Link TP24 connector with the fixture wires. Connect the E26 Adapter and thread it into the socket of the recessed Can or connect it with TP24 of the recessed Can directly.
3. Carefully route wires, and push fixture up to ceiling surface.



RECESSES CAN INSTALLATION 6" sold separately

ASD-RK6-LDS

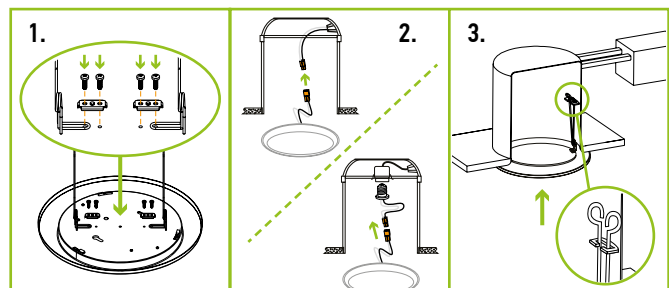
1. Place the spring clip arms into the rectangular slots and twist them in a locked position. The spring clips must be adjusted depending on the Can size.
2. Link TP24 connector with the fixture wires. Connect the E26 Adapter and thread it into the socket of the recessed Can or connect it with TP24 of the recessed Can directly.
3. Squeeze the two sets of spring clip arms up towards each other. Carefully route wires into the Can, and hook both sets of spring clip arms into the arm hooks on the inside wall of the Can. Release spring clip arms and gently push the Disk Light up into the Can until flush against the ceiling surface.



RECESSES CAN INSTALLATION 9.5" sold separately

ASD-RK9.5-LDS

1. Attach the spring hooks by using screws.
2. Link TP24 connector with the fixture wires. Connect the E26 Adapter and thread it into the socket of the recessed Can or connect it with TP24 of the recessed Can directly.
3. Squeeze the two sets of spring clip arms up towards each other. Carefully route wires into the Can, and hook both sets of spring clip arms into the arm hooks on the inside wall of the Can. Release spring clip arms and gently push the Disk Light up into the Can until flush against the ceiling surface.



For most up-to-date spec sheets please refer to asd-lighting.com



LED DISK LIGHT

ORDERING INFORMATION

LED DISK LIGHT:

Model	Watts	CCT	UPC	Pcs. in Middle Box	Middle Box Size	Middle Box Weight	GTIN 14 Middle box	Pcs. per Carton	Carton Size	Carton Weight	GTIN 14 Carton
ASD-LDS-4D1030-WH	10 W	3,000 K	810050732062	6	12.6" x 4.5" x 6.5"	2.9 lb	10810050732069	24	18.9" x 13.2" x 7.3"	12.1 lb	20810050732066
ASD-LDS-4D1040-WH	10 W	4,000 K	810050732079	6	12.6" x 4.5" x 6.5"	2.9 lb	10810050732076	24	18.9" x 13.2" x 7.3"	12.1 lb	20810050732073
ASD-LDS-4D1050-WH	10 W	5,000 K	810050732086	6	12.6" x 4.5" x 6.5"	2.9 lb	10810050732083	24	18.9" x 13.2" x 7.3"	12.1 lb	20810050732080
ASD-LDS-4D1030-BZ	10 W	3,000 K	810050732093	6	12.6" x 4.5" x 6.5"	2.9 lb	10810050732090	24	18.9" x 13.2" x 7.3"	12.1 lb	20810050732097
ASD-LDS-4D1040-BZ	10 W	4,000 K	810050732109	6	12.6" x 4.5" x 6.5"	2.9 lb	10810050732106	24	18.9" x 13.2" x 7.3"	12.1 lb	20810050732103
ASD-LDS-4D1050-BZ	10 W	5,000 K	810050732116	6	12.6" x 4.5" x 6.5"	2.9 lb	10810050732113	24	18.9" x 13.2" x 7.3"	12.1 lb	20810050732110
ASD-LDS-4D1030-NK	10 W	3,000 K	810050732123	6	12.6" x 4.5" x 6.5"	2.9 lb	10810050732120	24	18.9" x 13.2" x 7.3"	12.1 lb	20810050732127
ASD-LDS-4D1040-NK	10 W	4,000 K	810050732130	6	12.6" x 4.5" x 6.5"	2.9 lb	10810050732137	24	18.9" x 13.2" x 7.3"	12.1 lb	20810050732134
ASD-LDS-4D1050-NK	10 W	5,000 K	810050732147	6	12.6" x 4.5" x 6.5"	2.9 lb	10810050732144	24	18.9" x 13.2" x 7.3"	12.1 lb	20810050732141
ASD-LDS-6D1530-WH	15 W	3,000 K	810050732154	-	-	-	-	12	15.6" x 9.1" x 8.1"	9.9 lb	30810050732155
ASD-LDS-6D1540-WH	15 W	4,000 K	810050732161	-	-	-	-	12	15.6" x 9.1" x 8.1"	9.9 lb	30810050732162
ASD-LDS-6D1550-WH	15 W	5,000 K	810050732178	-	-	-	-	12	15.6" x 9.1" x 8.1"	9.9 lb	30810050732179
ASD-LDS-6D1530-BZ	15 W	3,000 K	810050732185	6	15.4" x 4.5" x 7.9"	4.7 lb	10810050732182	24	18.9" x 15.9" x 8.7"	19.8 lb	20810050732189
ASD-LDS-6D1540-BZ	15 W	4,000 K	810050732192	6	15.4" x 4.5" x 7.9"	4.7 lb	10810050732199	24	18.9" x 15.9" x 8.7"	19.8 lb	20810050732196
ASD-LDS-6D1550-BZ	15 W	5,000 K	810050732208	6	15.4" x 4.5" x 7.9"	4.7 lb	10810050732205	24	18.9" x 15.9" x 8.7"	19.8 lb	20810050732202
ASD-LDS-6D1530-NK	15 W	3,000 K	810050732222	6	15.4" x 4.5" x 7.9"	4.7 lb	10810050732229	24	18.9" x 15.9" x 8.7"	19.8 lb	20810050732226
ASD-LDS-6D1540-NK	15 W	4,000 K	810050732239	6	15.4" x 4.5" x 7.9"	4.7 lb	10810050732236	24	18.9" x 15.9" x 8.7"	19.8 lb	20810050732233
ASD-LDS-6D1550-NK	15 W	5,000 K	810050732246	6	15.4" x 4.5" x 7.9"	4.7 lb	10810050732243	24	18.9" x 15.9" x 8.7"	19.8 lb	20810050732240
ASD-LDS-9.5D2030-WH	20 W	3,000 K	810050731669	6	19.5" x 5.1" x 10"	9.5 lb	10810050731666	12	20.1" x 11" x 10.6"	19.8 lb	20810050731663
ASD-LDS-9.5D2040-WH	20 W	4,000 K	810050731676	6	19.5" x 5.1" x 10"	9.5 lb	10810050731673	12	20.1" x 11" x 10.6"	19.8 lb	20810050731670
ASD-LDS-9.5D2050-WH	20 W	5,000 K	810050731683	6	19.5" x 5.1" x 10"	9.5 lb	10810050731680	12	20.1" x 11" x 10.6"	19.8 lb	20810050731687
ASD-LDS-9.5D2030-BZ	20 W	3,000 K	810050732376	6	19.5" x 5.1" x 10"	9.5 lb	10810050732373	12	20.1" x 11" x 10.6"	19.8 lb	20810050732370
ASD-LDS-9.5D2040-BZ	20 W	4,000 K	810050732383	6	19.5" x 5.1" x 10"	9.5 lb	10810050732380	12	20.1" x 11" x 10.6"	19.8 lb	20810050732387
ASD-LDS-9.5D2050-BZ	20 W	5,000 K	810050732390	6	19.5" x 5.1" x 10"	9.5 lb	10810050732397	12	20.1" x 11" x 10.6"	19.8 lb	20810050732394

ACCESSORIES:

Model	Name	Weight	UPC
ASD-RK4-LDS	Retrofit Kit with E26 base and TP24 connector for LED Disk light 4"	0.1 lb	810050730105
ASD-RK6-LDS	Retrofit Kit with E26 base and TP24 connector for LED Disk light 6"	0.1 lb	810050730112
ASD-RK9.5-LDS	Retrofit Kit with E26 base and TP24 connector for LED Disk light 9.5"	0.1 lb	810050731690

Model	Pcs. in Middle Box	Middle Box Size	Middle Box Weight	GTIN 14 Middle box	Pcs. per Carton	Carton Size	Carton Weight	GTIN 14 Carton
ASD-RK4-LDS	12	5.4" x 3.5" x 5.4"	1 lb	10810050730102	72	11.4" x 11.4" x 6.3"	6.8 lb	20810050730109
ASD-RK6-LDS	12	7.5" x 3.5" x 7.5"	1.2 lb	10810050730119	48	15.7" x 7.5" x 8.3"	5.5 lb	20810050730116
ASD-RK9.5-LDS	12	7.5" x 3.5" x 7.5"	1.3 lb	10810050731697	48	7.5" x 3.5" x 7.5"	5.5 lb	20810050731694

For most up-to-date spec sheets please refer to asd-lighting.com