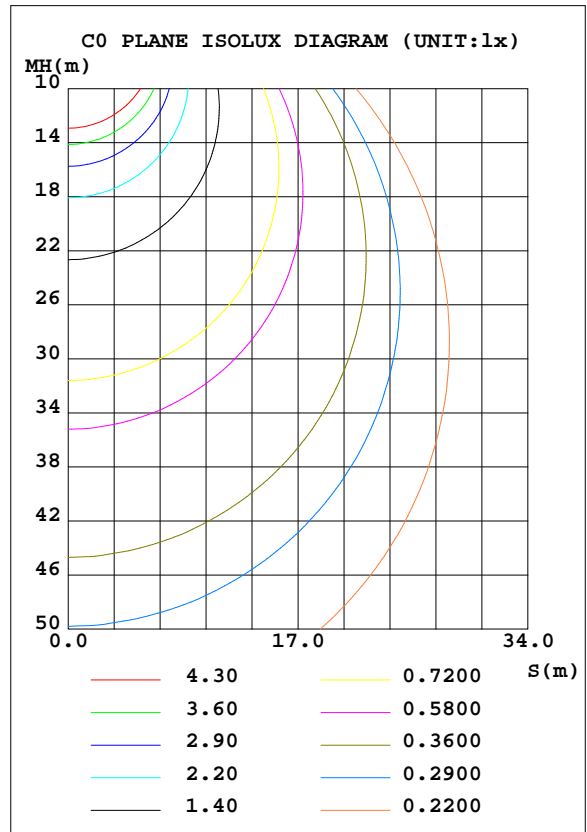
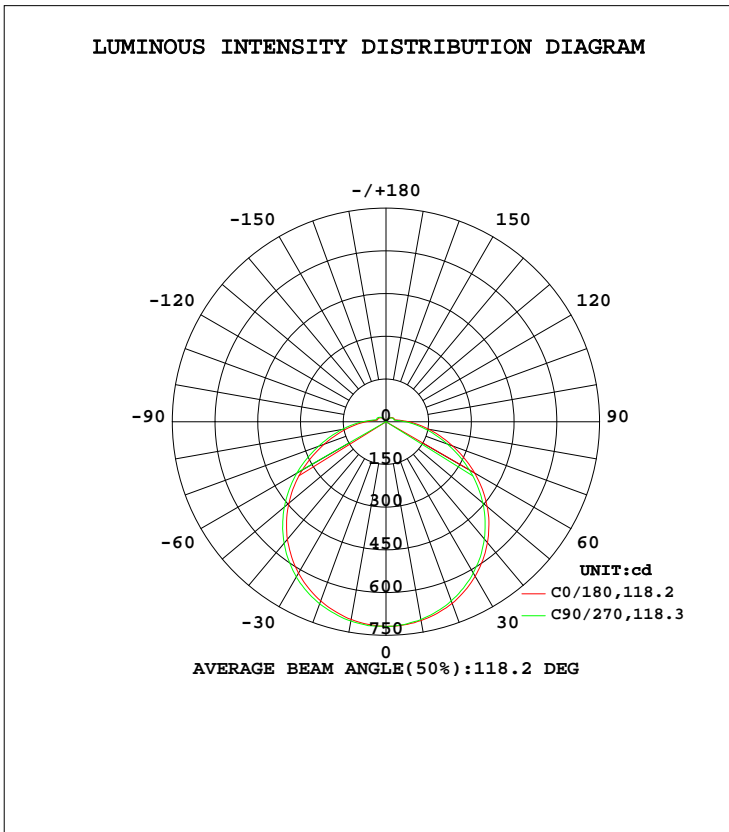


LUMINAIRE PHOTOMETRIC TEST REPORT

Test:U:120.1V I:0.2382A P:27.91W PF:0.9759 Lamp Flux:2460.95x1 lm		
NAME: ASD-LFMDR-MV-18D28CC-EM-NK 3000K	TYPE:N/A	WEIGHT:N/A
SPEC.:N/A	DIM.: N/A	SERIAL No.:N/A
MFR.: ASD Lighting corp	SUR.:N/A	Shielding Angle:N/A

DATA OF LAMP		PHOTOMETRIC DATA Eff: 88.17 lm/W			
MODEL	PSZ2S220523004-10	I _{max} (cd)	719.3	S/MH(C0/180)	1.30
NOMINAL POWER(W)		LOR(%)	100.0	S/MH(C90/270)	1.27
RATED VOLTAGE(V)	120	TOTAL FLUX(lm)	2461.0	η UP, DN(C0-180)	3.6,47.2
NOMINAL FLUX(lm)	2460.95	CIE CLASS	DIRECT	η UP, DN(C180-360)	3.3,45.9
LAMPS INSIDE	1	η up(%)	6.9	CIBSE SHR NOM	1.25
TEST VOLTAGE(V)	120	η down(%)	93.1	CIBSE SHR MAX	1.35



C Range: 0 - 360DEG
 C Interval: 22.5DEG
 Test Speed: HIGH
 Temperature:25.4DEG
 Operators:Carl
 Test Date:2022-06-04

γ Range: 0 - 180DEG
 γ Interval: 1.0DEG
 Test System:EVERFINE GO-R5000_V2 SYSTEM V2.0.351
 Humidity:37%
 Test Distance:2.526m [K=1.0000]
 Remarks:

ZONAL FLUX DIAGRAM

ZONAL FLUX DIAGRAM:

γ	C0	C45	C90	C135	C180	C225	C270	C315	γ	Φ zone	Φ total	%lum,lamp
10	704.9	708.0	710.8	710.9	708.9	706.8	705.3	703.0	0- 10	68.05	68.05	2.77,2.77
20	669.8	676.3	680.4	682.1	678.8	674.3	669.5	667.2	10- 20	195.8	263.8	10.7,10.7
30	614.4	621.9	629.3	631.2	626.8	619.9	612.9	609.8	20- 30	299.8	563.6	22.9,22.9
40	538.5	547.9	556.6	559.8	554.3	545.7	537.0	532.7	30- 40	366.6	930.2	37.8,37.8
50	445.0	455.9	465.9	470.0	463.9	454.7	443.7	439.0	40- 50	387.7	1318	53.6,53.6
60	339.9	350.6	361.6	365.4	359.3	349.2	338.0	332.6	50- 60	360.6	1679	68.2,68.2
70	231.1	242.4	252.2	255.2	248.9	239.0	229.1	224.9	60- 70	291.6	1970	80.1,80.1
80	139.0	147.7	156.1	158.0	153.0	145.3	136.7	132.4	70- 80	202.2	2172	88.3,88.3
90	70.75	76.98	82.64	83.92	80.01	74.87	68.71	66.69	80- 90	118.3	2291	93.1,93.1
100	33.90	37.20	39.90	39.69	37.95	35.75	33.09	31.81	90-100	57.77	2348	95.4,95.4
110	30.62	33.02	34.38	32.55	30.87	30.02	29.16	29.12	100-110	33.94	2382	96.8,96.8
120	27.18	29.32	30.61	29.24	28.04	27.29	26.43	26.09	110-120	29.75	2412	98,98
130	21.80	23.42	24.49	23.21	22.43	21.94	21.16	20.96	120-130	22.81	2435	98.9,98.9
140	14.86	15.68	16.43	15.65	15.60	15.19	14.48	14.04	130-140	14.76	2450	99.5,99.5
150	8.039	8.033	8.370	8.398	8.180	7.823	7.601	6.828	140-150	7.293	2457	99.8,99.8
160	4.672	4.031	4.165	5.032	4.090	3.948	3.632	3.475	150-160	2.700	2460	99.9,99.9
170	3.371	3.249	3.378	3.157	2.543	2.887	2.429	2.326	160-170	1.028	2461	100,100
180	0.9761	1.381	1.590	0.4383	1.185	1.185	1.188	1.185	170-180	0.2095	2461	100,100
DEG	LUMINOUS INTENSITY:cd									UNIT:lm		

Conical surface Flux(90deg): 1124.5 lm

%lum = 45.7%
%lamp = 45.7%

Conical surface Flux(120deg): 1678.5 lm

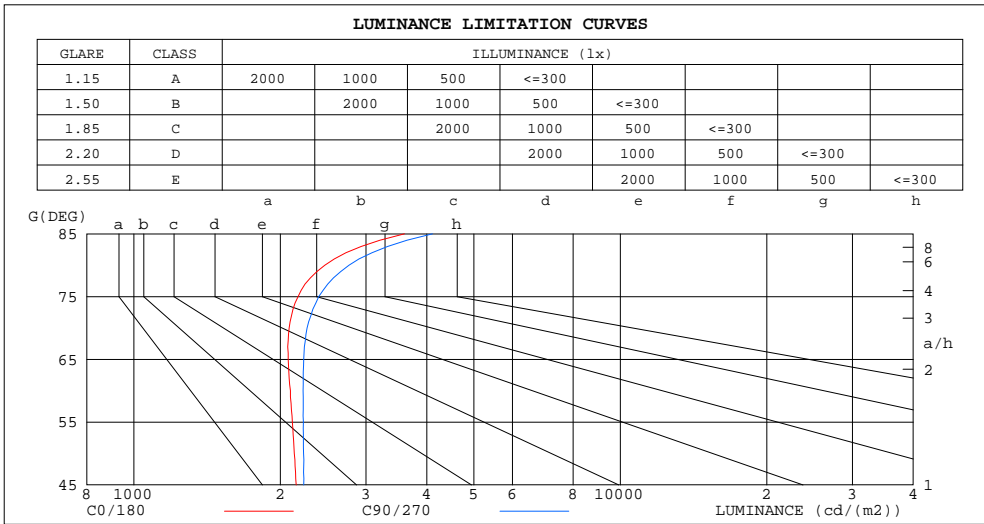
%lum = 68.2%
%lamp = 68.2%

C Range: 0 - 360DEG
C Interval: 22.5DEG
Test Speed: HIGH
Temperature:25.4DEG
Operators:Carl
Test Date:2022-06-04

γ Range: 0 - 180DEG
γ Interval: 1.0DEG
Test System:EVERFINE GO-R5000_V2 SYSTEM V2.0.351
Humidity:37%
Test Distance:2.526m [K=1.0000]
Remarks:

LUMINANCE LIMITATION CURVES

Test:U:120.1V I:0.2382A P:27.91W PF:0.9759 Lamp Flux:2460.95x1 lm		
NAME: ASD-LFMDR-MV-18D28CC-EM-NK 3000K	TYPE:N/A	WEIGHT:N/A
SPEC.:N/A	DIM.: N/A	SERIAL No.:N/A
MFR.: ASD Lighting corp	SUR.:N/A	Shielding Angle:N/A



LUMINANCE cd/(m2)		
G (DEG)	C0/180	C90/270
85	3599	4110
80	2469	2768
75	2176	2400
70	2085	2271
65	2076	2235
60	2097	2228
55	2118	2230
50	2136	2233
45	2156	2235

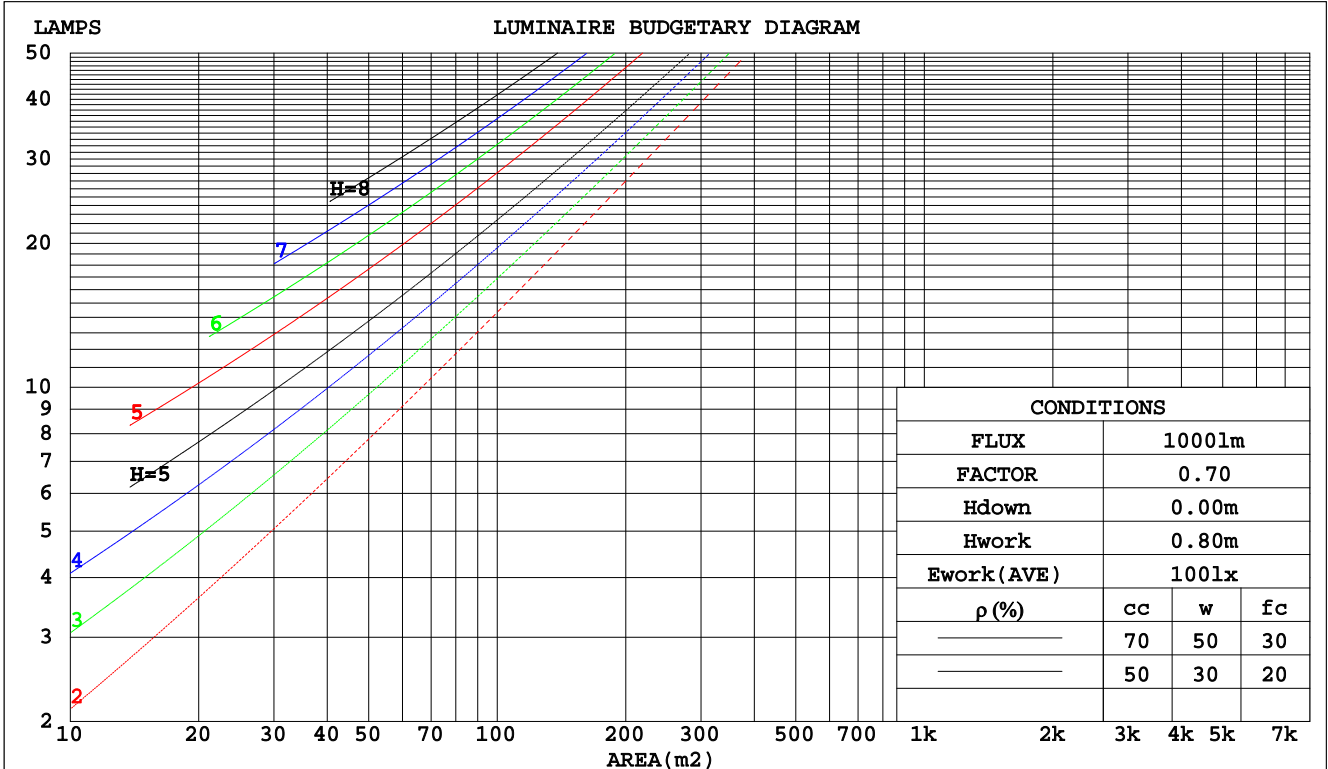
C Range: 0 - 360DEG
 C Interval: 22.5DEG
 Test Speed: HIGH
 Temperature:25.4DEG
 Operators:Carl
 Test Date:2022-06-04

γ Range: 0 - 180DEG
 γ Interval: 1.0DEG
 Test System:EVERFINE GO-R5000_V2 SYSTEM V2.0.351
 Humidity:37%
 Test Distance:2.526m [K=1.0000]
 Remarks:

CU AND LUMINAIRE BUDGETARY ESTIMATE DIAGRAM

Test:U:120.1V I:0.2382A P:27.91W PF:0.9759 Lamp Flux:2460.95x1 lm		
NAME: ASD-LFMDR-MV-18D28CC-EM-NK 3000K	TYPE:N/A	WEIGHT:N/A
SPEC.:N/A	DIM.: N/A	SERIAL No.:N/A
MFR.: ASD Lighting corp	SUR.:N/A	Shielding Angle:N/A

pcc	80%			70%			50%			30%			10%			0
	50%	30%	10%	50%	30%	10%	50%	30%	10%	50%	30%	10%	50%	30%	10%	0
pw																0
pfc	20%			20%			20%			20%			20%			0
RCR	RCR:Room Cavity Ratio Coefficients of Utilization(CU)															
0.0	1.17	1.17	1.17	1.14	1.14	1.14	1.07	1.07	1.07	1.01	1.01	1.01	.96	.96	.96	.93
1.0	1.00	.95	.91	.97	.93	.89	.92	.88	.85	.87	.84	.81	.82	.79	.77	.75
2.0	.87	.79	.73	.84	.77	.72	.79	.74	.69	.75	.70	.66	.71	.67	.64	.61
3.0	.76	.67	.60	.73	.65	.59	.69	.63	.57	.66	.60	.55	.62	.58	.53	.51
4.0	.67	.58	.51	.65	.56	.50	.61	.54	.48	.58	.52	.47	.55	.50	.46	.43
5.0	.59	.50	.43	.58	.49	.43	.55	.47	.42	.52	.46	.40	.50	.44	.39	.37
6.0	.53	.44	.38	.52	.43	.37	.49	.42	.36	.47	.40	.35	.45	.39	.34	.32
7.0	.48	.39	.33	.47	.39	.33	.45	.37	.32	.43	.36	.31	.41	.35	.31	.28
8.0	.44	.35	.29	.43	.35	.29	.41	.34	.28	.39	.33	.28	.38	.32	.27	.25
9.0	.40	.32	.26	.39	.31	.26	.38	.31	.26	.36	.30	.25	.35	.29	.25	.23
10.0	.37	.29	.24	.36	.29	.24	.35	.28	.23	.33	.27	.23	.32	.26	.22	.20



C Range: 0 - 360DEG
 C Interval: 22.5DEG
 Test Speed: HIGH
 Temperature:25.4DEG
 Operators:Carl
 Test Date:2022-06-04

γ Range: 0 - 180DEG
 γ Interval: 1.0DEG
 Test System:EVERFINE GO-R5000_V2 SYSTEM V2.0.351
 Humidity:37%
 Test Distance:2.526m [K=1.0000]
 Remarks:

WEC AND CCEC

Test:U:120.1V I:0.2382A P:27.91W PF:0.9759 Lamp Flux:2460.95x1 lm		
NAME: ASD-LFMDR-MV-18D28CC-EM-NK 3000K	TYPE:N/A	WEIGHT:N/A
SPEC.:N/A	DIM.: N/A	SERIAL No.:N/A
MFR.: ASD Lighting corp	SUR.:N/A	Shielding Angle:N/A

ρcc	80%			70%			50%			30%			10%			0
ρw	50%	30%	10%	50%	30%	10%	50%	30%	10%	50%	30%	10%	50%	30%	10%	0
ρfc	20%			20%			20%			20%			20%			0
RCR	RCR:Room Cavity Ratio						Wall Exitance Coefficients(WEC)									
0.0																
1.0	.348	.198	.063	.339	.193	.061	.321	.184	.059	.305	.176	.057	.291	.169	.054	
2.0	.313	.171	.053	.305	.168	.052	.289	.161	.050	.275	.154	.048	.262	.148	.047	
3.0	.283	.151	.045	.276	.148	.044	.262	.142	.043	.249	.137	.042	.237	.131	.041	
4.0	.258	.134	.039	.252	.132	.039	.239	.127	.038	.228	.122	.037	.217	.118	.036	
5.0	.237	.121	.035	.231	.118	.035	.220	.114	.034	.209	.110	.033	.199	.107	.032	
6.0	.218	.109	.031	.213	.108	.031	.203	.104	.030	.193	.100	.030	.185	.097	.029	
7.0	.202	.100	.028	.197	.098	.028	.188	.095	.027	.180	.092	.027	.172	.089	.026	
8.0	.188	.092	.026	.184	.091	.026	.176	.088	.025	.168	.085	.025	.160	.082	.024	
9.0	.176	.085	.024	.172	.084	.024	.164	.081	.023	.157	.079	.023	.151	.076	.022	
10.0	.165	.079	.022	.161	.078	.022	.155	.076	.021	.148	.073	.021	.142	.071	.020	

ρcc	80%			70%			50%			30%			10%			0
ρw	50%	30%	10%	50%	30%	10%	50%	30%	10%	50%	30%	10%	50%	30%	10%	0
ρfc	20%			20%			20%			20%			20%			0
RCR	RCR:Room Cavity Ratio						Ceiling Cavity Exitance Coefficients(CCEC)									
0.0	.243	.243	.243	.208	.208	.208	.142	.142	.142	.081	.081	.081	.026	.026	.026	
1.0	.236	.209	.184	.202	.179	.159	.138	.123	.110	.080	.071	.064	.025	.023	.021	
2.0	.229	.185	.149	.196	.160	.129	.134	.110	.090	.077	.064	.053	.025	.021	.017	
3.0	.221	.168	.126	.189	.145	.109	.130	.101	.077	.075	.059	.045	.024	.019	.015	
4.0	.213	.155	.111	.183	.134	.096	.126	.093	.068	.073	.055	.040	.023	.018	.013	
5.0	.206	.145	.100	.176	.125	.087	.122	.088	.062	.070	.051	.037	.023	.017	.012	
6.0	.198	.137	.093	.170	.119	.081	.118	.083	.057	.068	.049	.034	.022	.016	.011	
7.0	.191	.130	.087	.164	.113	.076	.114	.079	.054	.066	.047	.032	.021	.015	.011	
8.0	.185	.124	.083	.159	.108	.072	.110	.076	.051	.064	.045	.031	.021	.015	.010	
9.0	.178	.119	.080	.154	.104	.070	.106	.073	.049	.062	.043	.029	.020	.014	.010	
10.0	.173	.115	.077	.149	.100	.067	.103	.070	.048	.060	.042	.029	.020	.014	.009	

C Range: 0 - 360DEG
 C Interval: 22.5DEG
 Test Speed: HIGH
 Temperature:25.4DEG
 Operators:Carl
 Test Date:2022-06-04

γ Range: 0 - 180DEG
 γ Interval: 1.0DEG
 Test System:EVERFINE GO-R5000_V2 SYSTEM V2.0.351
 Humidity:37%
 Test Distance:2.526m [K=1.0000]
 Remarks:

UGR(Unified Glare Rating) Table

Test:U:120.1V I:0.2382A P:27.91W PF:0.9759 Lamp Flux:2460.95x1 lm										
NAME: ASD-LFMDR-MV-18D28CC-EM-NK 3000K					TYPE:N/A			WEIGHT:N/A		
SPEC.:N/A					DIM.: N/A			SERIAL No.:N/A		
MFR.: ASD Lighting corp					SUR.:N/A			Shielding Angle:N/A		
ceiling/cavity	0.7	0.7	0.5	0.5	0.3	0.7	0.7	0.5	0.5	0.3
walls	0.5	0.3	0.5	0.3	0.3	0.5	0.3	0.5	0.3	0.3
working plane	0.2	0.2	0.2	0.2	0.2	0.2	0.2	0.2	0.2	0.2
Room dimensions	Viewed crosswise					Viewed endwise				
x = 2H y = 2H	15.0	16.5	15.4	16.8	17.2	15.3	16.7	15.6	17.1	17.4
3H	16.7	18.1	17.1	18.5	18.8	17.1	18.4	17.5	18.8	19.2
4H	17.6	18.9	18.0	19.2	19.6	17.9	19.2	18.4	19.6	20.0
6H	18.4	19.6	18.8	20.0	20.4	18.8	20.0	19.2	20.4	20.9
8H	18.8	19.9	19.2	20.3	20.8	19.3	20.4	19.7	20.8	21.3
12H	19.2	20.3	19.6	20.7	21.2	19.7	20.9	20.2	21.3	21.7
4H 2H	15.7	17.0	16.1	17.4	17.8	15.9	17.2	16.3	17.5	17.9
3H	17.6	18.8	18.1	19.2	19.6	17.9	19.0	18.3	19.5	19.9
4H	18.6	19.6	19.1	20.1	20.6	18.9	20.0	19.4	20.4	20.9
6H	19.6	20.5	20.1	21.0	21.5	20.0	20.9	20.5	21.4	21.9
8H	20.1	20.9	20.6	21.4	22.0	20.5	21.4	21.0	21.9	22.4
12H	20.6	21.4	21.1	21.9	22.5	21.1	21.9	21.6	22.4	23.0
8H 4H	19.0	19.9	19.5	20.4	20.9	19.3	20.2	19.8	20.7	21.2
6H	20.2	21.0	20.8	21.5	22.1	20.6	21.3	21.1	21.8	22.4
8H	20.9	21.5	21.4	22.1	22.7	21.3	21.9	21.8	22.5	23.1
12H	21.6	22.2	22.2	22.7	23.4	22.1	22.6	22.7	23.2	23.8
12H 4H	19.1	19.9	19.6	20.4	20.9	19.3	20.1	19.9	20.7	21.2
6H	20.4	21.0	21.0	21.6	22.2	20.7	21.4	21.3	21.9	22.5
8H	21.1	21.7	21.7	22.3	22.9	21.5	22.1	22.1	22.6	23.3
Variations with the observer position at spacings:										
S = 1.0H	+ 0.1 / - 0.2					+ 0.1 / - 0.1				
1.5H	+ 0.2 / - 0.3					+ 0.2 / - 0.3				
2.0H	+ 0.1 / - 0.3					+ 0.1 / - 0.3				

CIE Pub.117 Corrected 2461 lm Total Lamp Luminous Flux.(8log(F/F0) = 3.1)

C Range: 0 - 360DEG
 C Interval: 22.5DEG
 Test Speed: HIGH
 Temperature:25.4DEG
 Operators:Carl
 Test Date:2022-06-04

γ Range: 0 - 180DEG
 γ Interval: 1.0DEG
 Test System:EVERFINE GO-R5000_V2 SYSTEM V2.0.351
 Humidity:37%
 Test Distance:2.526m [K=1.0000]
 Remarks:

UTILIZATION FACTORS TABLE

Test:U:120.1V I:0.2382A P:27.91W PF:0.9759 Lamp Flux:2460.95x1 lm		
NAME: ASD-LFMDR-MV-18D28CC-EM-NK 3000K	TYPE:N/A	WEIGHT:N/A
SPEC.:N/A	DIM.: N/A	SERIAL No.:N/A
MFR.: ASD Lighting corp	SUR.:N/A	Shielding Angle:N/A

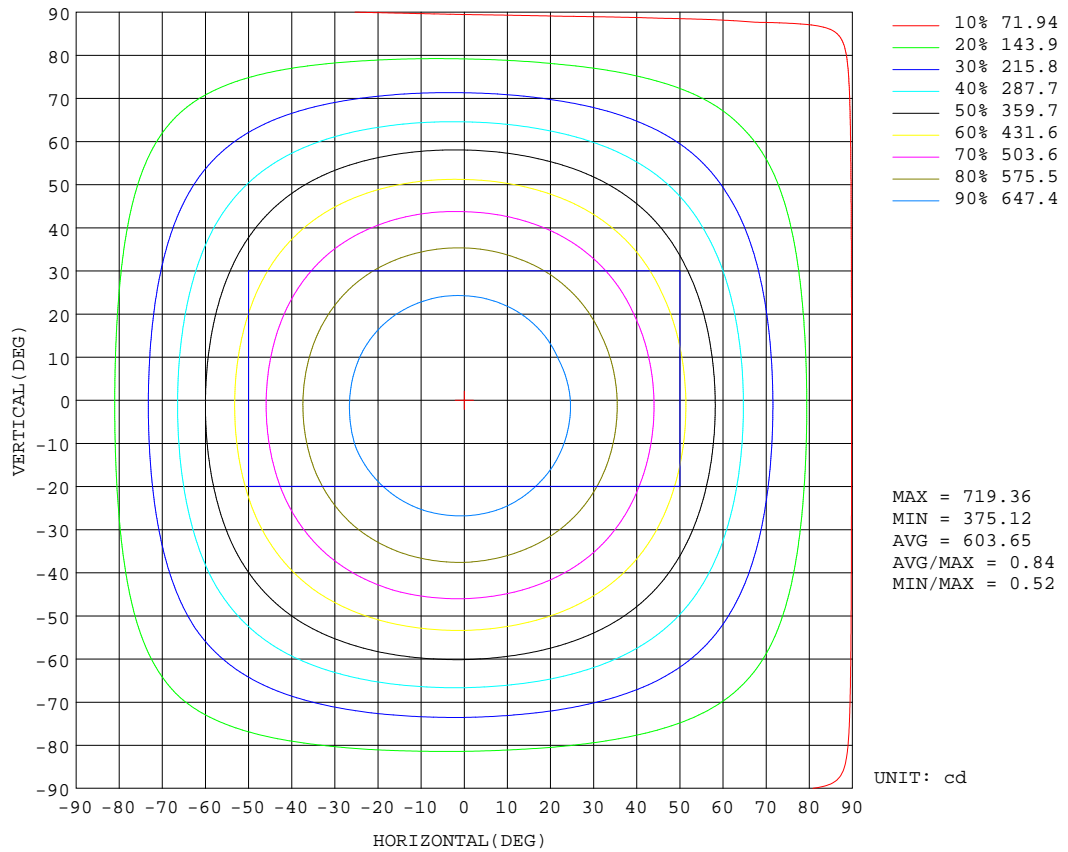
REFLECTANCE										
Ceiling	0.8	0.8	0.8	0.7	0.7	0.7	0.5	0.5	0.5	0
Walls	0.7	0.5	0.3	0.7	0.5	0.3	0.7	0.5	0.3	0
Working plane	0.2	0.2	0.2	0.2	0.2	0.2	0.2	0.2	0.2	0
ROOM INDEX	UTILIZATION FACTORS(PERCENT) $k(RI) \times RCR = 5$									
k = 0.60	53	41	34	52	41	34	51	40	34	27
0.80	63	51	43	62	50	43	60	49	42	35
1.00	71	59	51	70	58	51	67	60	50	42
1.25	78	67	59	76	66	58	73	64	57	49
1.50	83	72	65	81	71	64	77	69	62	54
2.00	90	81	73	88	79	72	84	76	70	61
2.50	94	86	79	92	84	77	87	80	75	65
3.00	98	90	84	95	88	82	90	84	79	69
4.00	102	95	90	99	93	88	94	89	85	74
5.00	105	99	94	102	97	92	96	92	88	77
ROOM INDEX	UF(total)									Direct
According to DIN EN 13032-2 2004			Suspended				SHRNOM = 1.25			

C Range: 0 - 360DEG
 C Interval: 22.5DEG
 Test Speed: HIGH
 Temperature:25.4DEG
 Operators:Carl
 Test Date:2022-06-04

γ Range: 0 - 180DEG
 γ Interval: 1.0DEG
 Test System:EVERFINE GO-R5000_V2 SYSTEM V2.0.351
 Humidity:37%
 Test Distance:2.526m [K=1.0000]
 Remarks:

ISOCANDELA DIAGRAM

Test:U:120.1V I:0.2382A P:27.91W PF:0.9759 Lamp Flux:2460.95x1 lm		
NAME: ASD-LFMDR-MV-18D28CC-EM-NK 3000K	TYPE:N/A	WEIGHT:N/A
SPEC.:N/A	DIM.: N/A	SERIAL No.:N/A
MFR.: ASD Lighting corp	SUR.:N/A	Shielding Angle:N/A

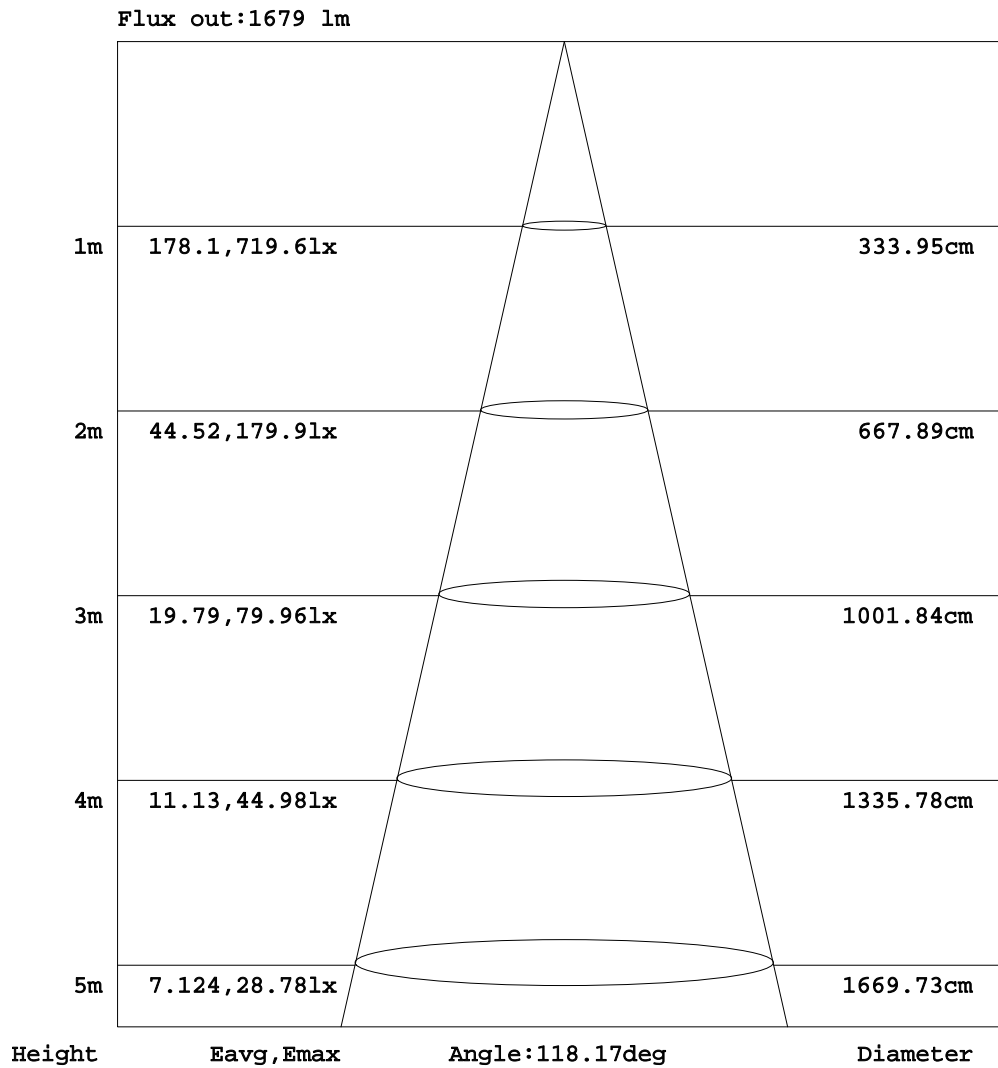


C Range: 0 - 360DEG
 C Interval: 22.5DEG
 Test Speed: HIGH
 Temperature:25.4DEG
 Operators:Carl
 Test Date:2022-06-04

γ Range: 0 - 180DEG
 γ Interval: 1.0DEG
 Test System:EVERFINE GO-R5000_V2 SYSTEM V2.0.351
 Humidity:37%
 Test Distance:2.526m [K=1.0000]
 Remarks:

AAI Figure

Test:U:120.1V I:0.2382A P:27.91W PF:0.9759 Lamp Flux:2460.95x1 lm		
NAME: ASD-LFMDR-MV-18D28CC-EM-NK 3000K	TYPE:N/A	WEIGHT:N/A
SPEC.:N/A	DIM.: N/A	SERIAL No.:N/A
MFR.: ASD Lighting corp	SUR.:N/A	Shielding Angle:N/A



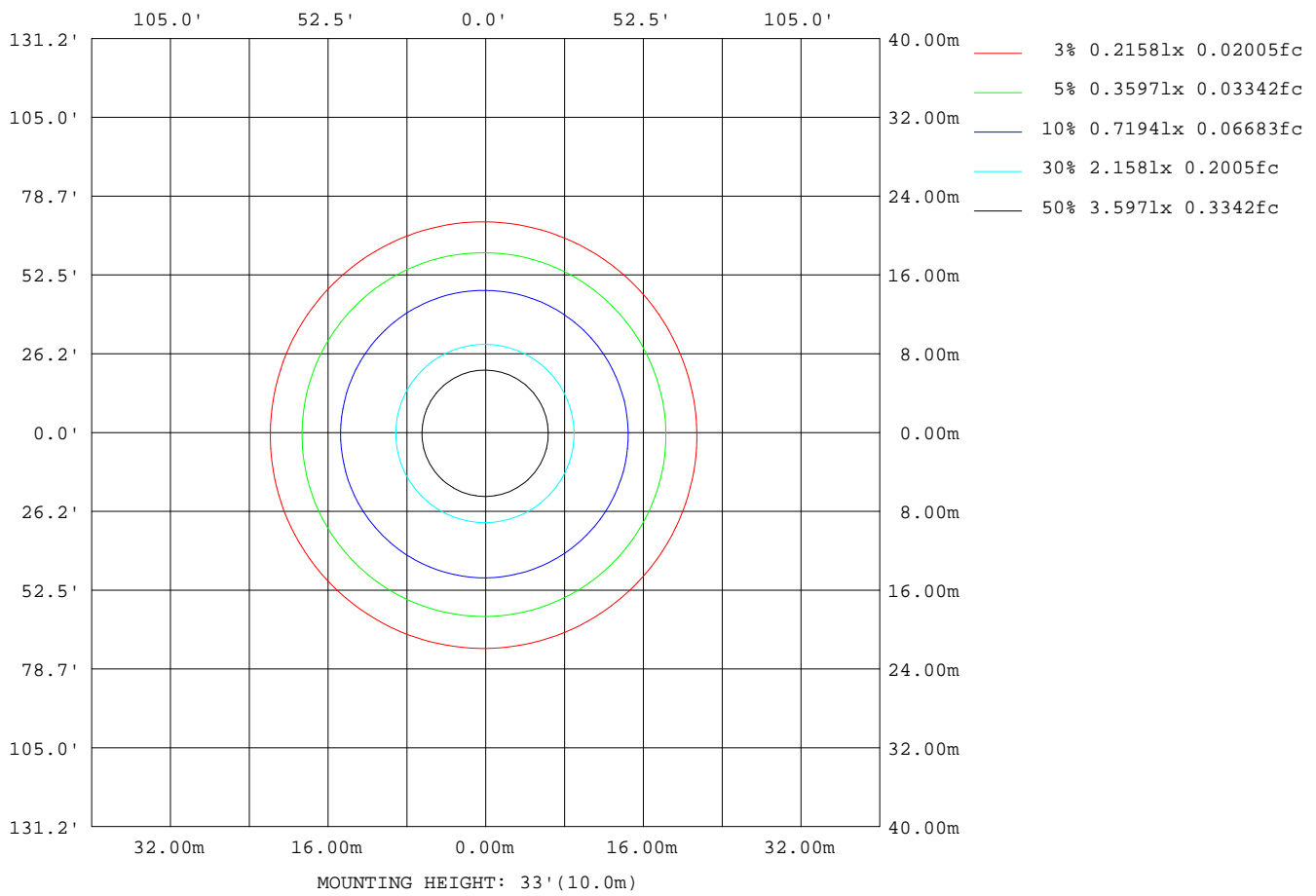
Note:The Curves indicate the illuminated area and the average illumination when the luminaire is at different distance.

C Range: 0 - 360DEG
 C Interval: 22.5DEG
 Test Speed: HIGH
 Temperature:25.4DEG
 Operators:Carl
 Test Date:2022-06-04

γ Range: 0 - 180DEG
 γ Interval: 1.0DEG
 Test System:EVERFINE GO-R5000_V2 SYSTEM V2.0.351
 Humidity:37%
 Test Distance:2.526m [K=1.0000]
 Remarks:

ISOLUX DIAGRAM

Test:U:120.1V I:0.2382A P:27.91W PF:0.9759 Lamp Flux:2460.95x1 lm		
NAME: ASD-LFMDR-MV-18D28CC-EM-NK 3000K	TYPE:N/A	WEIGHT:N/A
SPEC.:N/A	DIM.: N/A	SERIAL No.:N/A
MFR.: ASD Lighting corp	SUR.:N/A	Shielding Angle:N/A



C Range: 0 - 360DEG
 C Interval: 22.5DEG
 Test Speed: HIGH
 Temperature:25.4DEG
 Operators:Carl
 Test Date:2022-06-04

γ Range: 0 - 180DEG
 γ Interval: 1.0DEG
 Test System:EVERFINE GO-R5000_V2 SYSTEM V2.0.351
 Humidity:37%
 Test Distance:2.526m [K=1.0000]
 Remarks:

LED Avg.L Report

Test:U:120.1V I:0.2382A P:27.91W PF:0.9759 Lamp Flux:2460.95x1 lm		
NAME: ASD-LFMDR-MV-18D28CC-EM-NK 3000K	TYPE:N/A	WEIGHT:N/A
SPEC.:N/A	DIM.: N/A	SERIAL No.:N/A
MFR.: ASD Lighting corp	SUR.:N/A	Shielding Angle:N/A

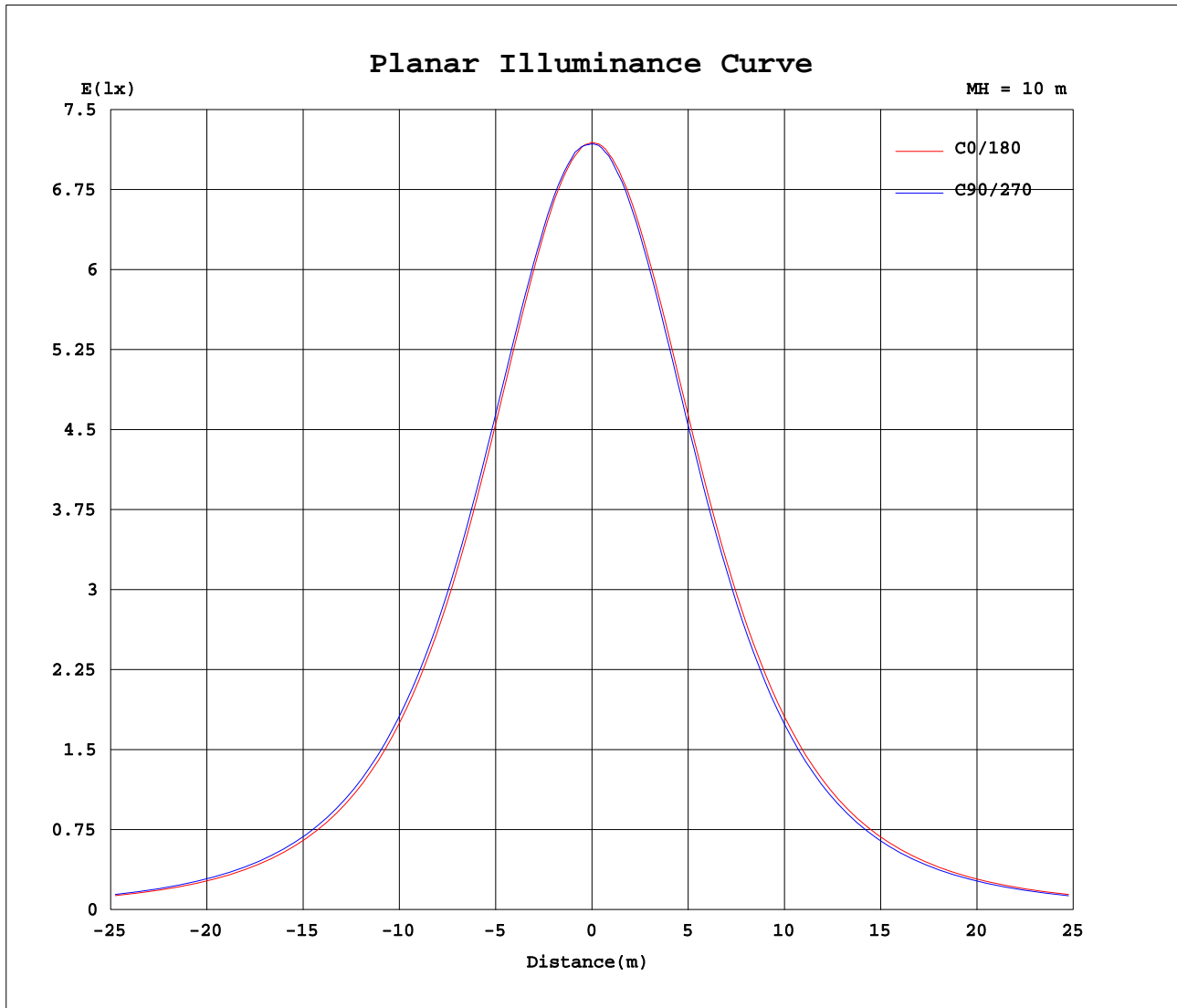
AvgL	cd/m2
L_0~180(65)av	2144
L_0~180(75)av	2269
L_0~180(85)av	3792
L_90~270(65)av	2150
L_90~270(75)av	2274
L_90~270(85)av	3813
L_45(65)av	2147
L_45(75)av	2270
L_45(85)av	3800

Standard: GB/T 29293-2012

C Range: 0 - 360DEG
 C Interval: 22.5DEG
 Test Speed: HIGH
 Temperature:25.4DEG
 Operators:Carl
 Test Date:2022-06-04

γ Range: 0 - 180DEG
 γ Interval: 1.0DEG
 Test System:EVERFINE GO-R5000_V2 SYSTEM V2.0.351
 Humidity:37%
 Test Distance:2.526m [K=1.0000]
 Remarks:

Planar Illuminance Curve



C Range: 0 - 360DEG
 C Interval: 22.5DEG
 Test Speed: HIGH
 Temperature: 25.4DEG
 Operators: Carl
 Test Date: 2022-06-04

γ Range: 0 - 180DEG
 γ Interval: 1.0DEG
 Test System: EVERFINE GO-R5000_V2 SYSTEM V2.0.351
 Humidity: 37%
 Test Distance: 2.526m [K=1.0000]
 Remarks:

LUMINOUS DISTRIBUTION INTENSITY DATA

Test:U:120.1V I:0.2382A P:27.91W PF:0.9759 Lamp Flux:2460.95x1 lm		
NAME: ASD-LFMDR-MV-18D28CC-EM-NK 3000K	TYPE:N/A	WEIGHT:N/A
SPEC.:N/A	DIM.: N/A	SERIAL No.:N/A
MFR.: ASD Lighting corp	SUR.:N/A	Shielding Angle:N/A

Table--1

UNIT: cd

C(DEG)\ γ (DEG)	0	22.5	45	67.5	90	112.5	135	157.5	180	202.5	225	247.5	270	292.5	315	337.5			
0	719	719	719	719	719	719	719	719	719	719	719	719	719	719	719	719			
5	714	716	716	716	719	717	717	717	716	717	716	714	715	713	714	714			
10	705	706	708	708	711	711	711	711	709	709	707	705	705	704	703	704			
15	690	692	694	695	697	698	699	698	696	695	694	690	690	688	687	689			
20	670	673	676	677	680	681	682	681	679	677	674	670	669	667	667	668			
25	645	648	651	654	658	659	659	659	655	653	650	645	644	641	640	641			
30	614	618	622	625	629	631	631	631	627	623	620	616	613	611	610	611			
35	579	583	587	590	595	598	598	598	593	589	585	580	578	575	574	575			
40	539	543	548	552	557	559	560	559	554	551	546	540	537	534	533	534			
45	494	498	504	508	513	516	517	517	511	507	503	496	492	489	488	489			
50	445	450	456	461	466	469	470	469	464	460	455	448	444	441	439	440			
55	394	399	405	410	415	419	419	419	413	408	403	396	392	389	387	388			
60	340	345	351	356	362	364	365	365	359	355	349	342	338	334	333	334			
65	284	290	296	301	307	310	310	309	304	300	294	287	283	279	278	279			
70	231	236	242	247	252	255	255	255	249	245	239	233	229	226	225	226			
75	182	187	192	197	202	204	204	204	199	195	190	184	180	177	177	177			
80	139	143	148	152	156	158	158	157	153	150	145	140	137	133	132	134			
85	102	105	109	113	116	118	118	117	113	110	106	102	99.3	97.1	96.2	97.3			
90	70.7	73.5	77.0	80.2	82.6	83.9	83.9	83.2	80.0	77.8	74.9	71.4	68.7	67.1	66.7	67.1			
95	47.4	49.6	52.0	55.2	57.1	57.6	57.5	56.9	54.7	53.1	50.8	48.3	46.4	45.4	44.8	45.5			
100	33.9	35.3	37.2	38.6	39.9	40.1	39.7	39.2	37.9	36.7	35.8	34.0	33.1	32.6	31.8	32.6			
105	30.8	31.9	33.2	34.0	34.4	33.7	32.6	31.7	30.9	30.3	30.0	29.5	29.4	29.4	29.2	29.9			
110	30.6	31.8	33.0	33.9	34.4	33.6	32.6	31.6	30.9	30.4	30.0	29.4	29.2	29.2	29.1	29.8			
115	29.4	30.4	31.6	32.5	33.0	32.5	31.5	30.7	30.0	29.5	29.1	28.5	28.3	28.2	28.1	28.6			
120	27.2	28.2	29.3	30.3	30.6	30.0	29.2	28.6	28.0	27.7	27.3	26.8	26.4	26.2	26.1	26.4			
125	24.6	25.6	26.6	27.6	27.9	27.2	26.4	25.9	25.5	25.2	24.8	24.3	24.0	23.7	23.8	23.9			
130	21.8	22.5	23.4	24.3	24.5	23.9	23.2	22.9	22.4	22.4	21.9	21.5	21.2	20.8	21.0	20.9			
135	18.3	19.0	19.8	20.6	20.6	20.0	19.5	19.4	19.0	19.1	18.7	18.3	17.9	17.6	17.7	17.7			
140	14.9	15.1	15.7	16.6	16.4	15.9	15.7	15.7	15.6	15.5	15.2	14.8	14.5	14.1	14.0	14.1			
145	11.5	11.3	11.7	12.1	12.1	11.8	11.8	12.2	11.7	11.5	11.4	11.1	10.9	10.4	10.4	10.4			
150	8.04	7.90	8.03	8.11	8.37	8.66	8.40	8.80	8.18	8.22	7.82	7.73	7.60	7.16	6.83	7.02			
155	5.92	5.61	5.58	5.59	5.80	6.09	6.23	6.51	5.65	5.60	5.32	4.98	5.04	4.78	4.68	4.84			
160	4.67	4.39	4.03	4.09	4.17	4.74	5.03	5.02	4.09	4.05	3.95	3.69	3.63	3.59	3.48	3.52			
165	4.02	3.94	3.50	4.12	4.00	4.25	4.16	4.33	3.43	3.43	3.40	3.19	3.05	2.57	3.02	3.20			
170	3.37	3.12	3.25	3.37	3.38	3.36	3.16	3.40	2.54	2.57	2.89	2.75	2.43	2.12	2.33	2.64			
175	1.99	1.74	2.20	1.98	2.02	2.03	1.86	2.14	1.78	1.72	1.82	1.89	1.77	1.51	1.22	1.74			
180	0.98	0.79	1.38	1.52	1.59	1.26	0.44	0.90	1.18	1.18	1.18	1.18	1.19	1.19	1.18	1.19			

C Range: 0 - 360DEG
 C Interval: 22.5DEG
 Test Speed: HIGH
 Temperature:25.4DEG
 Operators:Carl
 Test Date:2022-06-04

γ Range: 0 - 180DEG
 γ Interval: 1.0DEG
 Test System:EVERFINE GO-R5000_V2 SYSTEM V2.0.351
 Humidity:37%
 Test Distance:2.526m [K=1.0000]
 Remarks: