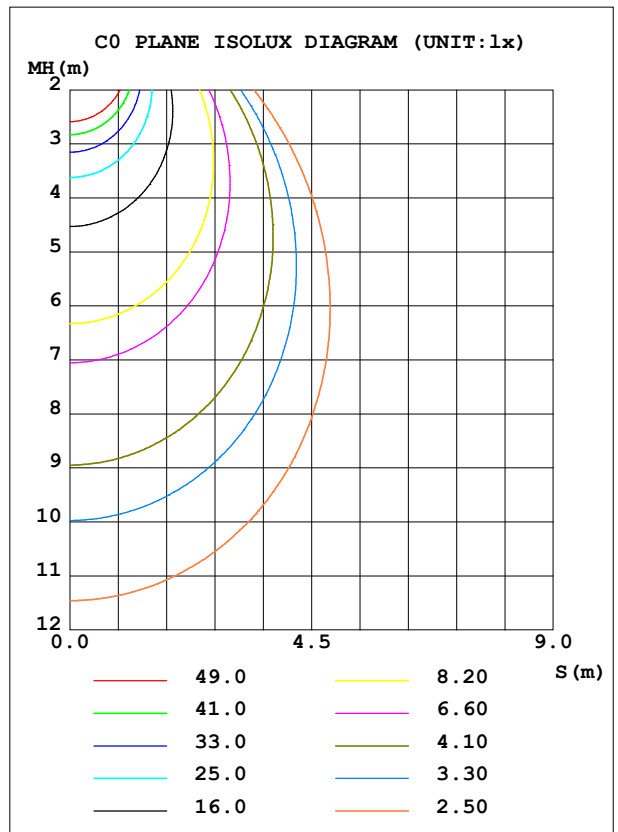
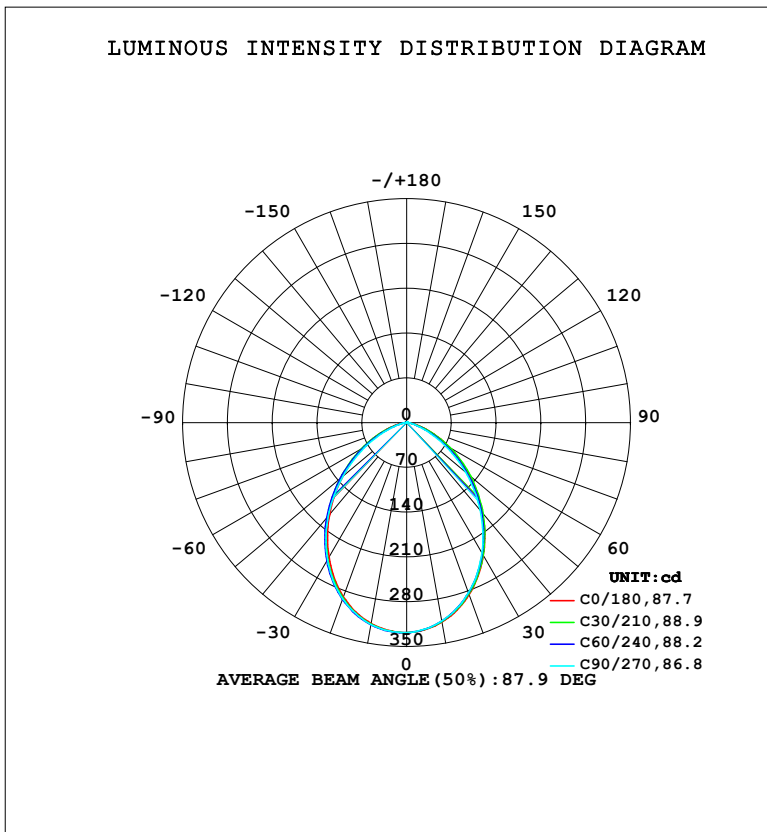


**LUMINAIRE PHOTOMETRIC TEST REPORT**

NAME: LED DOWNLIGHT	TYPE:	WEIGHT:
SPEC.:	DIM.:	SERIAL No.:
MFR.: ASD LIGHTING CORP	SUR.: 0.1*0.1	Shielding Angle:

DATA OF LAMP		PHOTOMETRIC DATA			
MODE: ASD-LRKS-4D9AC-XX (2700K)		Imax (cd)	328.4	S/MH (C0/180)	1.12
NOMINAL POWER (W)	8.6	LOR (%)	100.0	S/MH (C90/270)	1.14
RATED VOLTAGE (V)	120	TOTAL FLUX (lm)	662.94	<input type="checkbox"/> UP, DN (C0-180)	0.2, 48.8
NOMINAL FLUX (lm)	662.94	CIE CLASS	DIRECT	<input type="checkbox"/> UP, DN (C180-360)	0.2, 50.8
LAMPS INSIDE	1	<input type="checkbox"/> up (%)	0.4	CIBSE SHR NOM	1.25
TEST VOLTAGE (V)	120.0	<input type="checkbox"/> down (%)	99.6	CIBSE SHR MAX	1.25



C Range: 0 - 360DEG  
 C Interval: 30.0DEG  
 Test Speed: HIGH  
 Temperature: 25.3DEG  
 Operators:  
 Test Date: 2022-08-06

Range: 0 - 180DEG  
 Interval: 1.0DEG  
 Test System: EVERFINE GO-2000B\_V1 SYSTEM V2.00.426  
 Humidity: 65.0%  
 Test Distance: 8.000m [K=1.1125]  
 Remarks:

ZONAL FLUX DIAGRAM

ZONAL FLUX DIAGRAM:

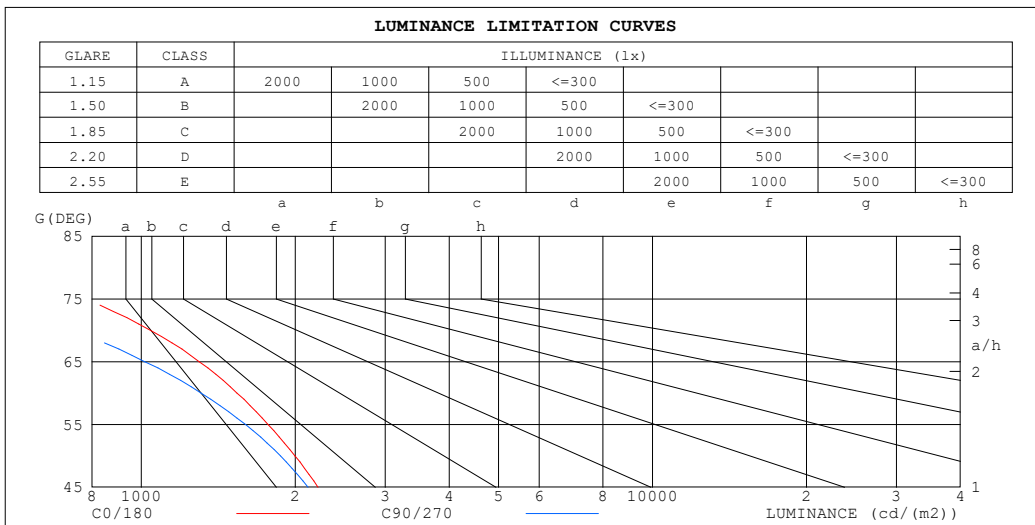
°	C0	C45	C90	C135	C180	C225	C270	C315	°	□ zone	□ total	%lum,lamp
10	316.8	315.6	315.1	316.3	319.1	320.3	320.6	319.1	0- 10	30.82	30.82	4.65,4.65
20	286.0	283.9	283.0	285.5	289.6	292.6	292.8	290.8	10- 20	85.85	116.7	17.6,17.6
30	239.6	238.1	235.2	239.5	243.0	248.1	247.5	246.4	20- 30	122.6	239.3	36.1,36.1
40	184.9	184.2	179.0	184.9	187.5	193.6	190.6	192.2	30- 40	134.7	374.0	56.4,56.4
50	128.2	127.9	120.3	128.2	130.0	135.4	129.7	134.4	40- 50	122.3	496.3	74.9,74.9
60	76.84	74.38	65.48	74.11	78.57	79.99	72.83	79.22	50- 60	91.27	587.6	88.6,88.6
70	35.60	30.92	25.24	30.47	36.94	33.58	27.60	32.90	60- 70	51.94	639.5	96.5,96.5
80	9.537	6.699	5.350	6.600	9.040	7.058	5.345	6.759	70- 80	18.52	658.0	99.3,99.3
90	0.0009	0	0	0.0000	0	0.0056	0.0002	0.0029	80- 90	2.284	660.3	99.6,99.6
100	0.0334	0.0418	0.0169	0.0447	0.0893	0.0390	0.0055	0.0279	90-100	0.0132	660.3	99.6,99.6
110	0.1724	0.1700	0.1395	0.1813	0.2339	0.1645	0.1448	0.1589	100-110	0.1064	660.4	99.6,99.6
120	0.3506	0.3567	0.3124	0.3819	0.4067	0.3484	0.3288	0.3400	110-120	0.2540	660.7	99.7,99.7
130	0.5566	0.5463	0.5075	0.5827	0.6463	0.5408	0.5017	0.5269	120-130	0.4030	661.1	99.7,99.7
140	0.7127	0.7219	0.6749	0.7583	0.8021	0.7192	0.6689	0.7054	130-140	0.4917	661.6	99.8,99.8
150	0.8740	0.8836	0.8255	0.9089	0.9579	0.8836	0.8363	0.8866	140-150	0.5031	662.1	99.9,99.9
160	1.019	1.020	1.021	1.037	1.131	1.034	0.9366	1.026	150-160	0.4414	662.5	99.9,99.9
170	1.141	1.137	1.165	1.132	1.247	1.171	1.093	1.151	160-170	0.3083	662.8	100,100
180	1.264	1.249	1.260	1.230	1.270	1.260	1.182	1.260	170-180	0.1139	662.9	100,100
DEG	LUMINOUS INTENSITY:cd									UNIT:lm		

C Range: 0 - 360DEG  
 C Interval: 30.0DEG  
 Test Speed: HIGH  
 Temperature:25.3DEG  
 Operators:  
 Test Date:2022-08-06

□ Range: 0 - 180DEG  
 □ Interval: 1.0DEG  
 Test System:EVERFINE GO-2000B\_V1 SYSTEM V2.00.426  
 Humidity:65.0%  
 Test Distance:8.000m [K=1.1125]  
 Remarks:

**LUMINANCE LIMITATION CURVES**

<b>NAME:</b> LED DOWNLIGHT	<b>TYPE:</b>	<b>WEIGHT:</b>
<b>SPEC.:</b>	<b>DIM.:</b>	<b>SERIAL No.:</b>
<b>MFR.:</b> ASD LIGHTING CORP	<b>SUR.:</b> 0.1*0.1	<b>Shielding Angle:</b>



LUMINANCE cd/(m2)		
G (DEG)	C0/180	C90/270
85	211	71
80	550	308
75	779	516
70	1042	738
65	1298	1016
60	1538	1309
55	1771	1599
50	1996	1871
45	2216	2118

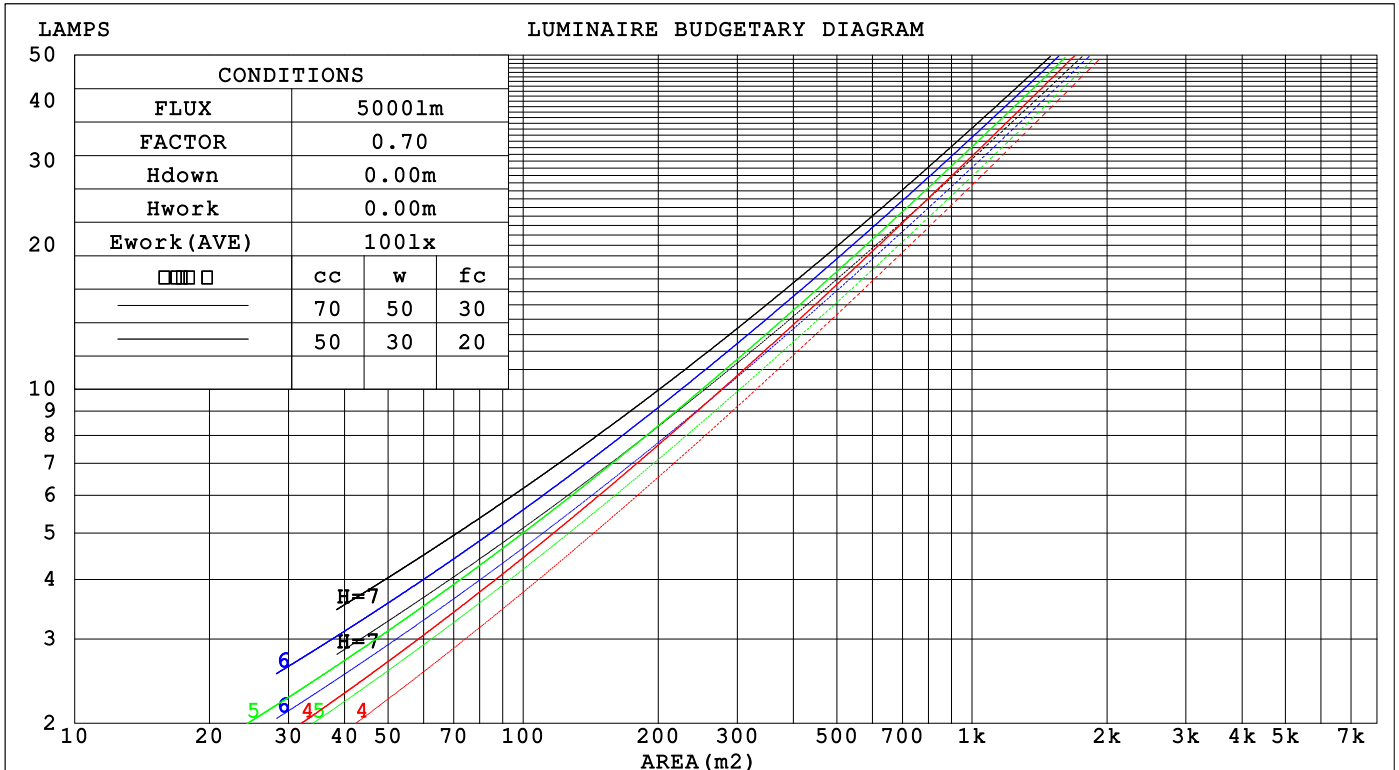
C Range: 0 - 360DEG  
 C Interval: 30.0DEG  
 Test Speed: HIGH  
 Temperature: 25.3DEG  
 Operators:  
 Test Date: 2022-08-06

Range: 0 - 180DEG  
 Interval: 1.0DEG  
 Test System: EVERFINE GO-2000B\_V1 SYSTEM V2.00.426  
 Humidity: 65.0%  
 Test Distance: 8.000m [K=1.1125]  
 Remarks:

**CU AND LUMINAIRE BUDGETARY ESTIMATE DIAGRAM**

NAME: LED DOWNLIGHT	TYPE:	WEIGHT:
SPEC.:	DIM.:	SERIAL No.:
MFR.: ASD LIGHTING CORP	SUR.: 0.1*0.1	Shielding Angle:

□cc	80%			70%			50%			30%			10%			0
□w	50%	30%	10%	50%	30%	10%	50%	30%	10%	50%	30%	10%	50%	30%	10%	0
□fc	20%			20%			20%			20%			20%			0
RCR	RCR:Room Cavity Ratio															
	Coefficients of Utilization(CU)															
0.0	1.19	1.19	1.19	1.16	1.16	1.16	1.11	1.11	1.11	1.06	1.06	1.06	1.02	1.02	1.02	.00
1.0	1.07	1.03	.00	1.04	1.01	.98	1.00	.98	.95	.96	.94	.92	.93	.91	.89	.87
2.0	.95	.89	.84	.93	.88	.83	.90	.85	.81	.86	.83	.79	.83	.80	.78	.76
3.0	.85	.78	.72	.83	.77	.71	.80	.75	.70	.78	.73	.69	.75	.71	.68	.66
4.0	.76	.68	.62	.75	.68	.62	.72	.66	.61	.70	.65	.60	.68	.63	.60	.58
5.0	.69	.61	.55	.68	.60	.54	.66	.59	.54	.64	.58	.53	.62	.57	.53	.51
6.0	.63	.54	.49	.62	.54	.48	.60	.53	.48	.58	.52	.47	.57	.51	.47	.45
7.0	.57	.49	.43	.56	.49	.43	.55	.48	.43	.53	.47	.43	.52	.47	.42	.40
8.0	.52	.45	.39	.52	.44	.39	.50	.44	.39	.49	.43	.39	.48	.43	.38	.37
9.0	.48	.41	.36	.48	.41	.35	.47	.40	.35	.46	.40	.35	.45	.39	.35	.33
10.0	.45	.37	.33	.44	.37	.32	.43	.37	.32	.42	.36	.32	.42	.36	.32	.30



C Range: 0 - 360DEG  
 C Interval: 30.0DEG  
 Test Speed: HIGH  
 Temperature:25.3DEG  
 Operators:  
 Test Date:2022-08-06

□ Range: 0 - 180DEG  
 □ Interval: 1.0DEG  
 Test System:EVERFINE GO-2000B\_V1 SYSTEM V2.00.426  
 Humidity:65.0%  
 Test Distance:8.000m [K=1.1125]  
 Remarks:

WEC AND CCEC

NAME: LED DOWNLIGHT	TYPE:	WEIGHT:
SPEC.:	DIM.:	SERIAL No.:
MFR.: ASD LIGHTING CORP	SUR.: 0.1*0.1	Shielding Angle:

<input type="checkbox"/> cc	80%			70%			50%			30%			10%			0
<input type="checkbox"/> w	50%	30%	10%	50%	30%	10%	50%	30%	10%	50%	30%	10%	50%	30%	10%	0
<input type="checkbox"/> fc	20%			20%			20%			20%			20%			0
RCR	RCR:Room Cavity Ratio						Wall Exitance Coefficients(WEC)									
0.0																
1.0	.254	.145	.046	.247	.141	.045	.234	.134	.043	.222	.128	.041	.211	.122	.039	
2.0	.247	.135	.042	.241	.133	.041	.230	.128	.040	.219	.123	.038	.209	.118	.037	
3.0	.234	.125	.037	.229	.122	.037	.219	.118	.036	.209	.115	.035	.201	.111	.034	
4.0	.220	.114	.034	.215	.113	.033	.206	.109	.033	.198	.106	.032	.190	.103	.031	
5.0	.206	.105	.030	.202	.104	.030	.194	.101	.030	.187	.099	.029	.180	.096	.029	
6.0	.194	.097	.028	.190	.096	.028	.183	.094	.027	.176	.092	.027	.170	.090	.027	
7.0	.182	.090	.026	.179	.089	.025	.172	.087	.025	.166	.085	.025	.161	.084	.025	
8.0	.171	.084	.024	.168	.083	.023	.163	.081	.023	.157	.080	.023	.152	.078	.023	
9.0	.162	.078	.022	.159	.078	.022	.154	.076	.022	.149	.075	.021	.145	.073	.021	
10.0	.153	.073	.020	.151	.073	.020	.146	.072	.020	.142	.070	.020	.137	.069	.020	

<input type="checkbox"/> cc	80%			70%			50%			30%			10%			0
<input type="checkbox"/> w	50%	30%	10%	50%	30%	10%	50%	30%	10%	50%	30%	10%	50%	30%	10%	0
<input type="checkbox"/> fc	20%			20%			20%			20%			20%			0
RCR	RCR:Room Cavity Ratio						Ceiling Cavity Exitance Coefficients(CCEC)									
0.0	.194	.194	.194	.165	.165	.165	.113	.113	.113	.065	.065	.065	.021	.021	.021	
1.0	.180	.160	.142	.154	.137	.122	.105	.094	.084	.060	.055	.049	.019	.018	.016	
2.0	.169	.135	.106	.145	.116	.092	.099	.081	.064	.057	.047	.038	.018	.015	.012	
3.0	.161	.117	.082	.138	.101	.071	.095	.070	.050	.055	.041	.030	.018	.013	.010	
4.0	.153	.103	.066	.131	.089	.057	.090	.062	.040	.052	.036	.024	.017	.012	.008	
5.0	.145	.093	.054	.125	.080	.047	.086	.056	.033	.050	.033	.020	.016	.011	.006	
6.0	.139	.084	.045	.119	.073	.039	.082	.051	.028	.048	.030	.017	.015	.010	.005	
7.0	.132	.077	.039	.114	.067	.034	.079	.047	.024	.046	.028	.014	.015	.009	.005	
8.0	.126	.071	.034	.109	.062	.029	.075	.043	.021	.044	.026	.012	.014	.008	.004	
9.0	.121	.066	.030	.104	.058	.026	.072	.041	.018	.042	.024	.011	.014	.008	.004	
10.0	.115	.062	.027	.099	.054	.023	.069	.038	.017	.040	.022	.010	.013	.007	.003	

C Range: 0 - 360DEG  
 C Interval: 30.0DEG  
 Test Speed: HIGH  
 Temperature:25.3DEG  
 Operators:  
 Test Date:2022-08-06

Range: 0 - 180DEG  
 Interval: 1.0DEG  
 Test System:EVERFINE GO-2000B\_V1 SYSTEM V2.00.426  
 Humidity:65.0%  
 Test Distance:8.000m [K=1.1125]  
 Remarks:

**UGR(Unified Glare Rating) Table**

NAME: LED DOWNLIGHT		TYPE:					WEIGHT:				
SPEC.:		DIM.:					SERIAL No.:				
MFR.: ASD LIGHTING CORP		SUR.: 0.1*0.1					Shielding Angle:				
ceiling/cavity		0.7	0.7	0.5	0.5	0.3	0.7	0.7	0.5	0.5	0.3
walls		0.5	0.3	0.5	0.3	0.3	0.5	0.3	0.5	0.3	0.3
working plane		0.2	0.2	0.2	0.2	0.2	0.2	0.2	0.2	0.2	0.2
Room dimensions		Viewed crosswise					Viewed endwise				
x = 2H y = 2H		15.9	17.2	16.1	17.4	17.6	15.3	16.7	15.6	16.8	17.1
	3H	16.6	17.8	16.9	18.1	18.3	15.8	17.0	16.1	17.2	17.5
	4H	16.8	17.9	17.1	18.2	18.4	15.8	17.0	16.1	17.3	17.5
	6H	16.8	17.9	17.1	18.2	18.5	15.8	16.9	16.1	17.2	17.5
	8H	16.8	17.9	17.1	18.1	18.4	15.8	16.8	16.1	17.1	17.4
	12H	16.7	17.8	17.1	18.1	18.4	15.7	16.8	16.1	17.0	17.4
	4H 2H	16.1	17.3	16.4	17.6	17.8	15.7	16.8	16.0	17.1	17.3
	3H	17.0	18.0	17.3	18.3	18.6	16.2	17.3	16.6	17.6	17.9
	4H	17.2	18.2	17.6	18.5	18.8	16.4	17.3	16.7	17.6	17.9
	6H	17.3	18.2	17.7	18.5	18.9	16.4	17.2	16.8	17.5	17.9
	8H	17.3	18.1	17.7	18.5	18.8	16.4	17.1	16.8	17.5	17.9
	12H	17.3	18.0	17.7	18.4	18.8	16.3	17.0	16.7	17.4	17.8
	8H 4H	17.2	18.0	17.6	18.3	18.7	16.4	17.1	16.8	17.5	17.9
	6H	17.4	18.0	17.8	18.4	18.8	16.4	17.1	16.9	17.5	17.9
	8H	17.4	17.9	17.8	18.4	18.8	16.4	17.0	16.9	17.4	17.9
	12H	17.4	17.8	17.8	18.3	18.8	16.4	16.9	16.9	17.3	17.8
	12H 4H	17.2	17.9	17.6	18.3	18.7	16.4	17.0	16.8	17.4	17.8
	6H	17.3	17.9	17.8	18.3	18.8	16.4	17.0	16.9	17.4	17.9
	8H	17.4	17.8	17.8	18.3	18.8	16.4	16.9	16.9	17.3	17.8
Variations with the observer position at spacings(CIE Pub.117):											
S = 1.0H		+ 0.4 / - 0.5					+ 0.6 / - 0.7				
1.5H		+ 0.2 / - 0.3					+ 0.2 / - 0.3				
2.0H		+ 0.7 / - 0.7					+ 0.9 / - 1.1				

CIE Pub.117, 662.9 lm Total Lamp Luminous Flux Correct (8log(F/F0) = -1.4)  
 Area: 0.1 m2

C Range: 0 - 360DEG	<input type="checkbox"/> Range: 0 - 180DEG
C Interval: 30.0DEG	<input type="checkbox"/> Interval: 1.0DEG
Test Speed: HIGH	Test System:EVERFINE GO-2000B_V1 SYSTEM V2.00.426
Temperature:25.3DEG	Humidity:65.0%
Operators:	Test Distance:8.000m [K=1.1125]
Test Date:2022-08-06	Remarks:

**UTILIZATION FACTORS TABLE**

NAME: LED DOWNLIGHT	TYPE:	WEIGHT:
SPEC.:	DIM.:	SERIAL No.:
MFR.: ASD LIGHTING CORP	SUR.: 0.1*0.1	Shielding Angle:

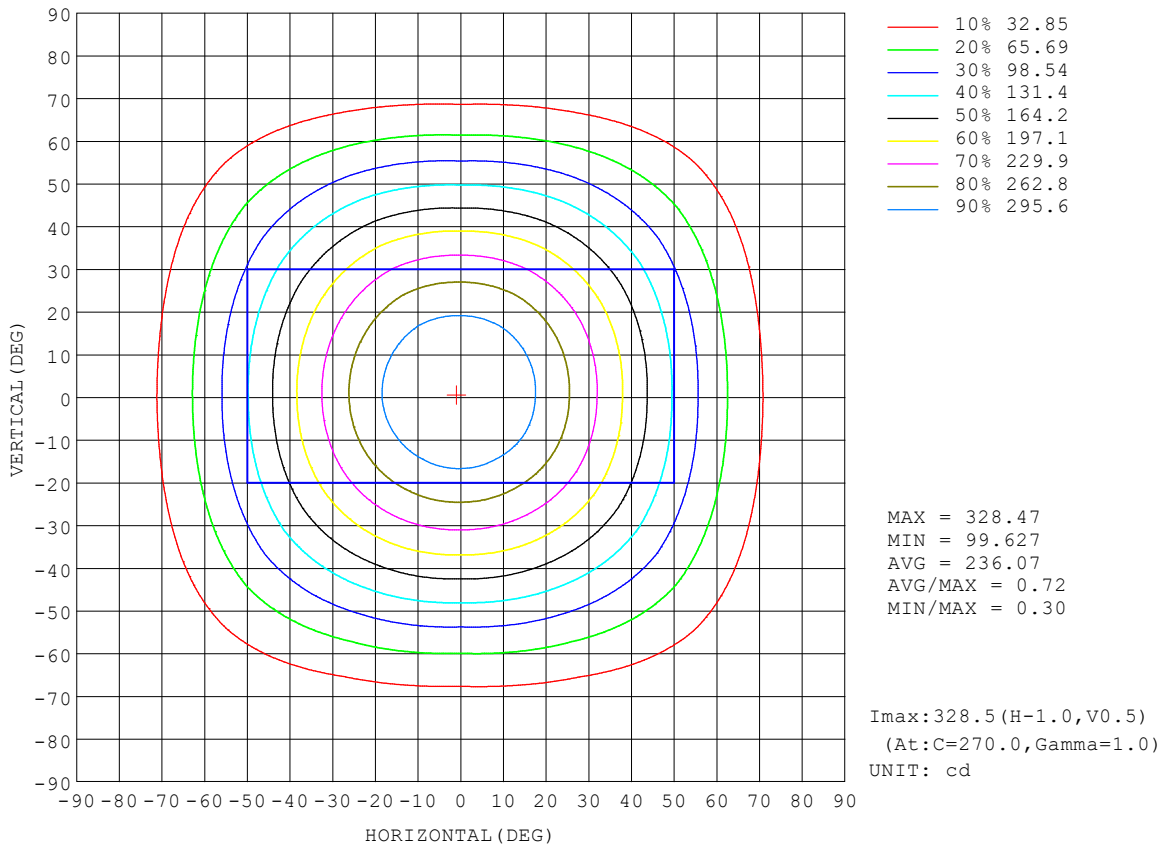
REFLECTANCE										
Ceiling	0.8	0.8	0.8	0.7	0.7	0.7	0.5	0.5	0.5	0
Walls	0.7	0.5	0.3	0.7	0.5	0.3	0.7	0.5	0.3	0
Working plane	0.2	0.2	0.2	0.2	0.2	0.2	0.2	0.2	0.2	0
ROOM INDEX	UTILIZATION FACTORS (PERCENT) $k(RI) \times RCR = 5$									
k = 0.60	64	54	47	63	53	47	62	53	47	41
0.80	74	64	58	73	64	57	72	63	57	51
1.00	82	73	67	81	72	66	79	73	66	59
1.25	89	80	74	88	80	74	85	78	73	67
1.50	94	85	80	92	85	79	89	83	78	71
2.00	100	93	87	98	91	86	95	89	85	78
2.50	103	96	91	101	95	90	97	92	89	81
3.00	106	100	95	104	98	94	100	96	92	84
4.00	109	104	100	107	102	99	102	99	96	88
5.00	111	107	104	108	105	102	104	101	99	90
ROOM INDEX	UF(total)									Direct
According to DIN EN 13032-2 2004			Suspended				SHRNOM = 1.25			

C Range: 0 - 360DEG  
 C Interval: 30.0DEG  
 Test Speed: HIGH  
 Temperature: 25.3DEG  
 Operators:  
 Test Date: 2022-08-06

Range: 0 - 180DEG  
 Interval: 1.0DEG  
 Test System: EVERFINE GO-2000B\_V1 SYSTEM V2.00.426  
 Humidity: 65.0%  
 Test Distance: 8.000m [K=1.1125]  
 Remarks:

**ISOCANDELA DIAGRAM**

NAME: LED DOWNLIGHT	TYPE:	WEIGHT:
SPEC.:	DIM.:	SERIAL No.:
MFR.: ASD LIGHTING CORP	SUR.: 0.1*0.1	Shielding Angle:



C Range: 0 - 360DEG  
 C Interval: 30.0DEG  
 Test Speed: HIGH  
 Temperature: 25.3DEG  
 Operators:  
 Test Date: 2022-08-06

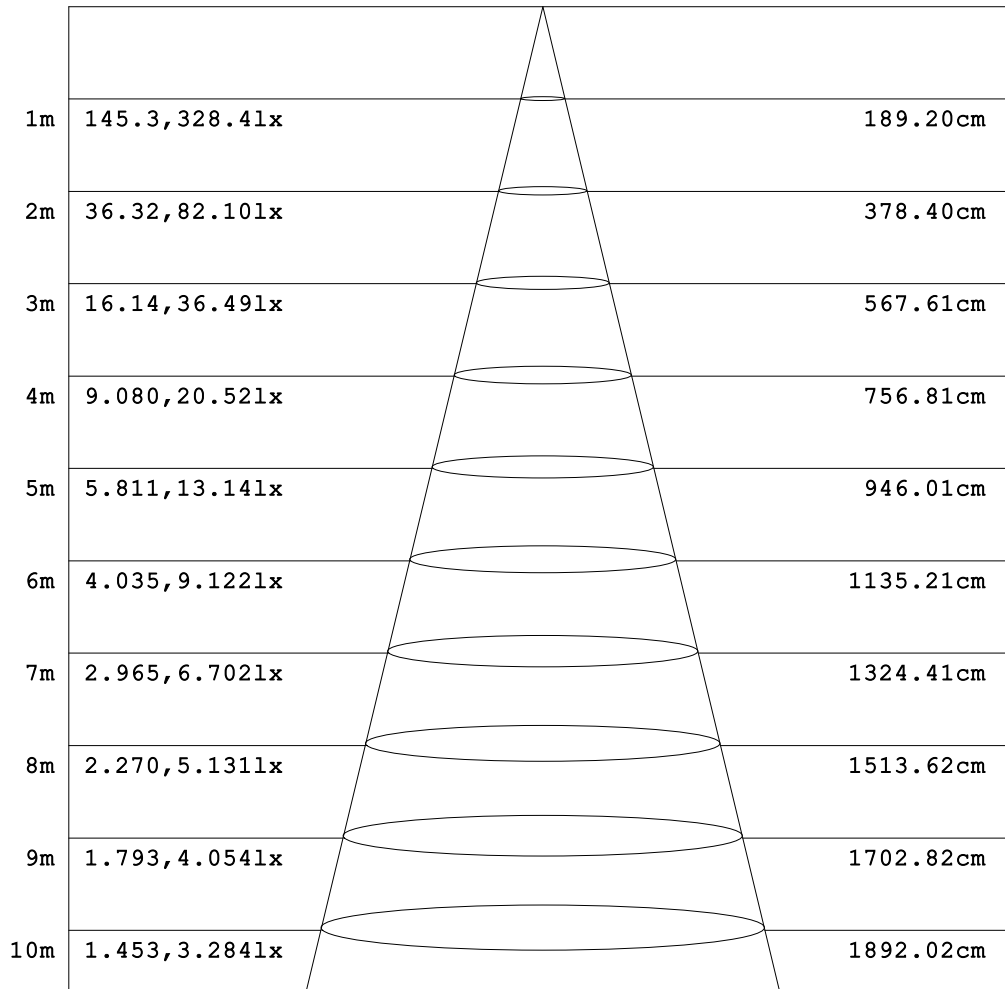
Range: 0 - 180DEG  
 Interval: 1.0DEG  
 Test System: EVERFINE GO-2000B\_V1 SYSTEM V2.00.426  
 Humidity: 65.0%  
 Test Distance: 8.000m [K=1.1125]  
 Remarks:



**AAI Figure**

NAME: LED DOWNLIGHT	TYPE:	WEIGHT:
SPEC.:	DIM.:	SERIAL No.:
MFR.: ASD LIGHTING CORP	SUR.: 0.1*0.1	Shielding Angle:

Flux out:425.6 lm



Angle:86.82deg

Height

Eavg, Emax

Diameter

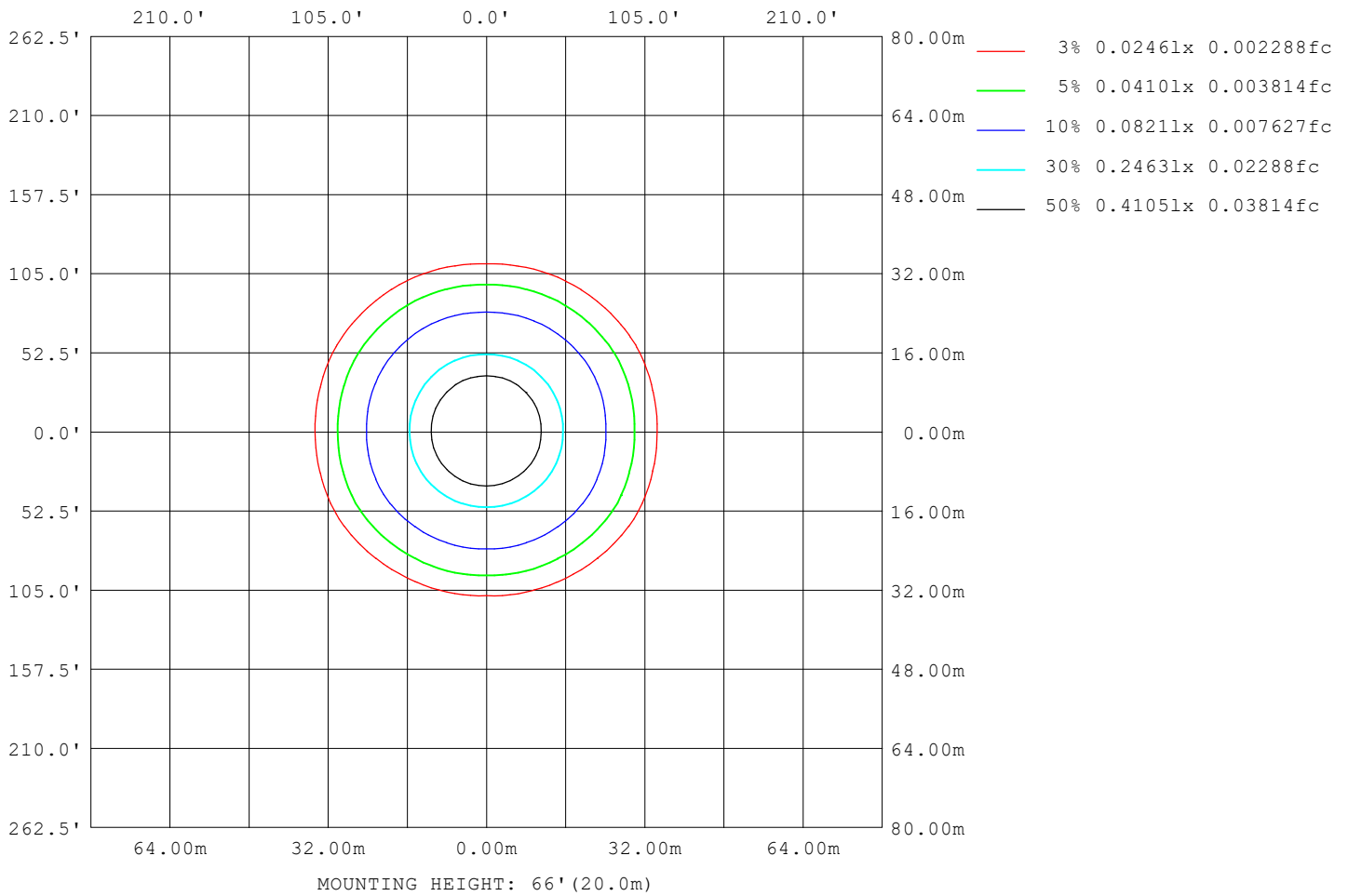
Note: The Curves indicate the illuminated area and the average illumination when the luminaire is at different distance.

C Range: 0 - 360DEG  
 C Interval: 30.0DEG  
 Test Speed: HIGH  
 Temperature:25.3DEG  
 Operators:  
 Test Date:2022-08-06

Range: 0 - 180DEG  
 Interval: 1.0DEG  
 Test System:EVERFINE GO-2000B\_V1 SYSTEM V2.00.426  
 Humidity:65.0%  
 Test Distance:8.000m [K=1.1125]  
 Remarks:

**ISOLUX DIAGRAM**

<b>NAME:</b> LED DOWNLIGHT	<b>TYPE:</b>	<b>WEIGHT:</b>
<b>SPEC.:</b>	<b>DIM.:</b>	<b>SERIAL No.:</b>
<b>MFR.:</b> ASD LIGHTING CORP	<b>SUR.:</b> 0.1*0.1	<b>Shielding Angle:</b>



C Range: 0 - 360DEG  
 C Interval: 30.0DEG  
 Test Speed: HIGH  
 Temperature: 25.3DEG  
 Operators:  
 Test Date: 2022-08-06

Range: 0 - 180DEG  
 Interval: 1.0DEG  
 Test System: EVERFINE GO-2000B\_V1 SYSTEM V2.00.426  
 Humidity: 65.0%  
 Test Distance: 8.000m [K=1.1125]  
 Remarks:

LED Avg.L Report

NAME: LED DOWNLIGHT	TYPE:	WEIGHT:
SPEC.:	DIM.:	SERIAL No.:
MFR.: ASD LIGHTING CORP	SUR.: 0.1*0.1	Shielding Angle:

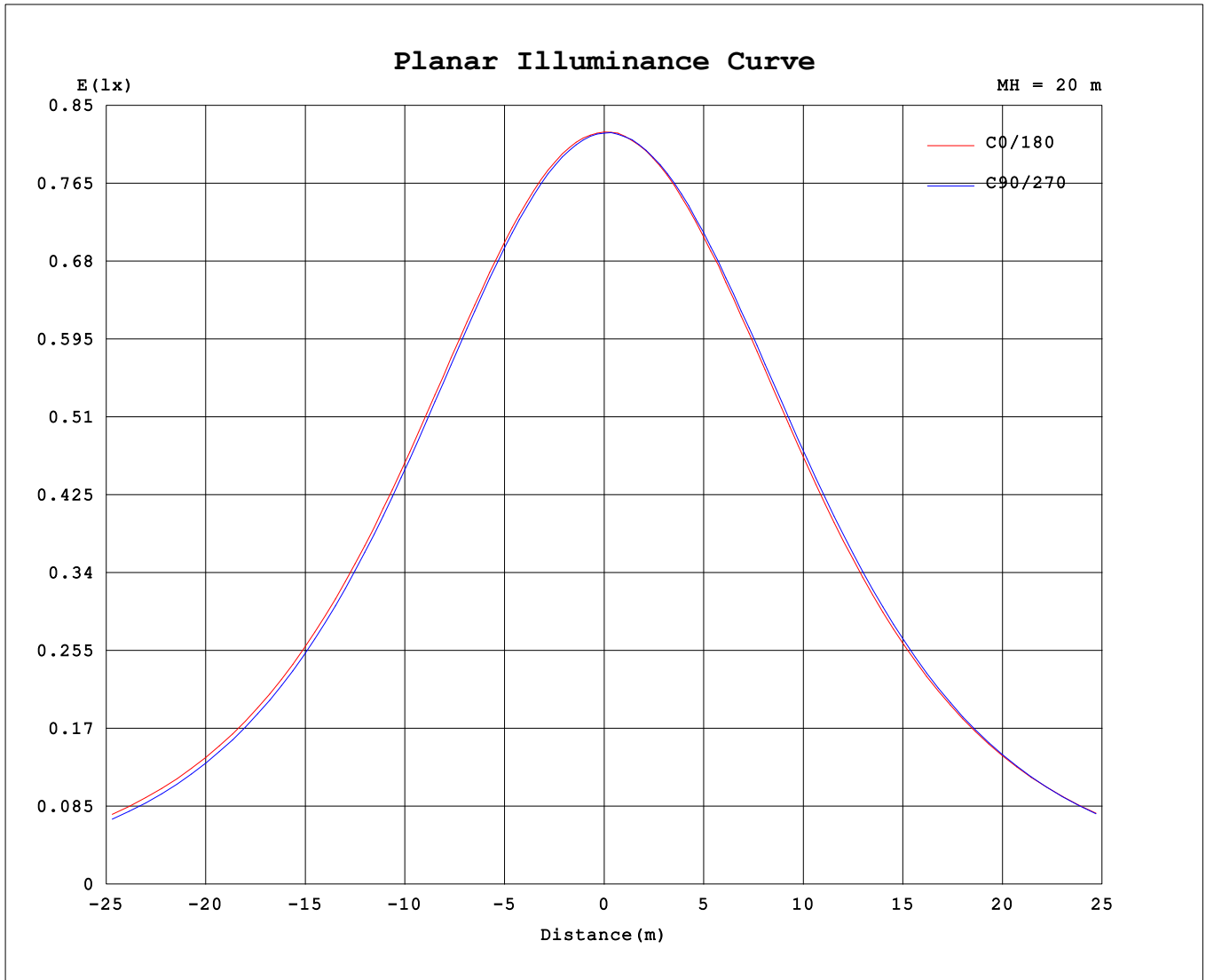
AvgL	cd/m2
L_0~180 (65) av	1317
L_0~180 (75) av	796
L_0~180 (85) av	246
L_90~270 (65) av	1076
L_90~270 (75) av	524
L_90~270 (85) av	77
L_45 (65) av	1255
L_45 (75) av	633
L_45 (85) av	148

Standard: GB/T 29293-2012

C Range: 0 - 360DEG  
 C Interval: 30.0DEG  
 Test Speed: HIGH  
 Temperature:25.3DEG  
 Operators:  
 Test Date:2022-08-06

Range: 0 - 180DEG  
 Interval: 1.0DEG  
 Test System:EVERFINE GO-2000B\_V1 SYSTEM V2.00.426  
 Humidity:65.0%  
 Test Distance:8.000m [K=1.1125]  
 Remarks:

**Planar Illuminance Curve**



C Range: 0 - 360DEG  
 C Interval: 30.0DEG  
 Test Speed: HIGH  
 Temperature: 25.3DEG  
 Operators:  
 Test Date: 2022-08-06

Range: 0 - 180DEG  
 Interval: 1.0DEG  
 Test System: EVERFINE GO-2000B\_V1 SYSTEM V2.00.426  
 Humidity: 65.0%  
 Test Distance: 8.000m [K=1.1125]  
 Remarks:

LUMINOUS DISTRIBUTION INTENSITY DATA

NAME: LED DOWNLIGHT	TYPE:	WEIGHT:
SPEC.:	DIM.:	SERIAL No.:
MFR.: ASD LIGHTING CORP	SUR.: 0.1*0.1	Shielding Angle:

Table--1

UNIT: cd

C (DEG) \ □ (DEG)	0	30	60	90	120	150	180	210	240	270	300	330							
0	328	328	328	328	328	328	328	328	328	328	328	328							
5	325	324	324	324	324	325	326	327	327	327	326	326							
10	317	316	315	315	315	317	319	320	321	321	320	319							
15	304	303	301	301	302	304	306	308	310	309	308	306							
20	286	285	283	283	284	287	290	291	294	293	292	289							
25	265	263	261	261	262	265	268	271	274	272	272	269							
30	240	239	237	235	238	241	243	247	250	247	248	245							
35	213	213	210	208	211	215	216	220	223	220	221	218							
40	185	186	182	179	183	187	187	192	195	191	193	191							
45	157	158	153	150	154	159	159	164	165	160	163	163							
50	128	131	125	120	125	132	130	136	135	130	134	135							
55	101	104	96.5	91.7	96.1	104	103	108	106	100	105	107							
60	76.8	78.6	70.1	65.5	69.6	78.7	78.6	81.7	78.3	72.8	77.4	81.0							
65	54.8	55.1	46.7	43.0	46.1	54.9	56.5	57.6	52.9	48.0	52.0	56.9							
70	35.6	34.4	27.5	25.2	26.9	34.0	36.9	36.2	31.0	27.6	30.4	35.4							
75	20.2	18.0	14.2	13.4	14.0	17.7	21.0	18.9	15.4	13.8	15.1	18.3							
80	9.54	7.76	5.64	5.35	5.58	7.62	9.04	7.96	6.16	5.35	5.92	7.60							
85	1.84	1.88	0.73	0.62	0.65	1.79	2.46	1.98	0.91	0.72	0.79	1.69							
90	0.00	0.00	0.00	0.00	0.00	0.00	0.00	0.01	0.00	0.00	0.00	0.01							
95	0.00	0.02	0.00	0.00	0.00	0.03	0.04	0.00	0.01	0.00	0.00	0.00							
100	0.03	0.08	0.00	0.02	0.01	0.08	0.09	0.01	0.07	0.01	0.02	0.03							
105	0.10	0.16	0.05	0.07	0.08	0.15	0.17	0.06	0.14	0.06	0.07	0.09							
110	0.17	0.22	0.12	0.14	0.14	0.22	0.23	0.11	0.22	0.14	0.14	0.18							
115	0.25	0.30	0.20	0.22	0.25	0.31	0.32	0.19	0.31	0.23	0.22	0.27							
120	0.35	0.41	0.30	0.31	0.35	0.42	0.41	0.28	0.41	0.33	0.30	0.38							
125	0.46	0.50	0.39	0.41	0.45	0.51	0.55	0.37	0.51	0.42	0.38	0.49							
130	0.56	0.61	0.48	0.51	0.55	0.62	0.65	0.47	0.61	0.50	0.47	0.59							
135	0.65	0.70	0.57	0.59	0.65	0.70	0.74	0.56	0.71	0.58	0.56	0.66							
140	0.71	0.78	0.66	0.67	0.74	0.78	0.80	0.63	0.81	0.67	0.65	0.76							
145	0.80	0.85	0.74	0.76	0.81	0.86	0.87	0.72	0.89	0.76	0.74	0.87							
150	0.87	0.95	0.81	0.83	0.88	0.94	0.96	0.80	0.97	0.84	0.82	0.95							
155	0.95	1.01	0.89	0.91	0.95	1.01	1.05	0.88	1.04	0.88	0.91	1.02							
160	1.02	1.05	0.99	1.02	1.01	1.07	1.13	0.94	1.13	0.94	0.98	1.07							
165	1.08	1.10	1.08	1.09	1.07	1.12	1.21	1.05	1.20	1.03	1.05	1.12							
170	1.14	1.13	1.14	1.17	1.09	1.18	1.25	1.11	1.23	1.09	1.13	1.17							
175	1.17	1.21	1.22	1.24	1.16	1.22	1.26	1.17	1.31	1.14	1.23	1.24							
180	1.26	1.25	1.25	1.26	1.22	1.24	1.27	1.20	1.32	1.18	1.30	1.22							

C Range: 0 - 360DEG  
 C Interval: 30.0DEG  
 Test Speed: HIGH  
 Temperature:25.3DEG  
 Operators:  
 Test Date:2022-08-06

□ Range: 0 - 180DEG  
 □ Interval: 1.0DEG  
 Test System:EVERFINE GO-2000B\_V1 SYSTEM V2.00.426  
 Humidity:65.0%  
 Test Distance:8.000m [K=1.1125]  
 Remarks: