



LED BACK-LIT FLAT PANEL

► **DESIGN & OPTIONS** - LED BACK-LIT FLAT PANELS come with a unique design, aluminum frame, and a 0-10V dimmable driver with circuit overload, short circuit, and low-voltage protection, making it both safe and reliable. Special LED bead location ensures better heat dissipation and less light decay, and the non-yellowing PC diffuser provides uniform light distribution. The fixture comes with 120-277V and three sizes: 1x4, 2x2 and 2x4. You can choose either 4,000K or 5,000K color temperatures. Models with power and CCT options are also available, you can choose either 3,000K, 3,500K, 4,000K or 5,000K with a simple switch.

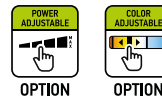
► **INSTALLATION** - This fixture has convenient recessed mounting for drop in installation with standard grid ceilings. Also can be suspended with aircraft cable or wire (not included) to the attached clips. Clips can be folded over the "T" grid locking the light to the grid. Ideal for use in earthquake zones requiring seismic securing clips. Low Frame sold separate for surface mounting installation. Refer to install instructions for detailed steps.

► **APPLICATION** - These fixtures are perfect for commercial, industrial, and residential applications such as: offices, hospitals, schools, retail, and workshops. The fixture is Damp location rated and can operate in temperatures between 14+104°F (-10+40°C).

► **ENERGY SAVINGS & EFFICIENCY** - This fixture provides a lumen output that is equal to or higher than traditional fluorescent architectural troffers and can cut your electric bill by up to 80% instantly. With a lifespan of 60,000 hours, these fixtures are made to last decades under normal operation! This fixture will save you a significant amount of money in its lifetime.

► **CERTIFICATION & WARRANTY** - Buy with confidence: ASD provides a 5-year warranty along with UL and DLC Premium certifications to guarantee top quality products and safety! Top US certifications allow participation in rebates; please check the rebate programs available in your state.

Catalog number	
Notes	
Type	



PRODUCT LEGEND:

Family	Size	Dimmable	Watts	CCT	Series
ASD-BLP	XX	X	XX	XX	XXX
LED Back-Lit Flat Panel	14 = type 1x4 22 = type 2x2 24 = type 2x4	D = Dimmable A = Power Adjustable	25 = 25 W 32 = 32 W 40 = 40 W 50 = 50 W 35 = 20/25/30/35 W	40 = 4,000 K 50 = 5,000 K AC = 3,500/4,000/5,000 K AC = 3,000/3,500/4,000/5,000 K	PRM = Premium

LED BACK-LIT FLAT PANEL:

Model	Type	Watts	Dimmable	CCT	Lumens	Dimensions (LxWxH)	Series
ASD-BLP-14A35AC-PRM	1x4	20/25/30/35 W	0 - 10 V	3,000/3,500/4,000/5,000 K	2,791/3,510/4,071/4,388 lm	47 3/4" x 11 7/8" x 1 1/4"	Premium
ASD-BLP-22D2540-PRM	2x2	25 W	0 - 10 V	4,000 K	3,225 lm	23 3/4" x 23 3/4" x 1 1/4"	Premium
ASD-BLP-22D2550-PRM	2x2	25 W	0 - 10 V	5,000 K	3,250 lm	23 3/4" x 23 3/4" x 1 1/4"	Premium
ASD-BLP-22D25AC-PRM	2x2	25 W	0 - 10 V	3,500/4,000/5,000 K	3,368/3,617/3,472 lm	23 3/4" x 23 3/4" x 1 1/4"	Premium
ASD-BLP-24D3240-PRM	2x4	32 W	0 - 10 V	4,000 K	4,384 lm	47 3/4" x 23 3/4" x 1 1/4"	Premium
ASD-BLP-24D4040-PRM	2x4	40 W	0 - 10 V	4,000 K	5,160 lm	47 3/4" x 23 3/4" x 1 1/4"	Premium
ASD-BLP-24D4050-PRM	2x4	40 W	0 - 10 V	5,000 K	5,200 lm	47 3/4" x 23 3/4" x 1 1/4"	Premium
ASD-BLP-24D5040-PRM	2x4	50 W	0 - 10 V	4,000 K	6,450 lm	47 3/4" x 23 3/4" x 1 1/4"	Premium
ASD-BLP-24D40AC-PRM	2x4	40 W	0 - 10 V	3,500/4,000/5,000 K	5,423/5,750/5,605 lm	47 3/4" x 23 3/4" x 1 1/4"	Premium

For most up-to-date spec sheets please refer to asd-lighting.com



LED BACK-LIT FLAT PANEL

PRODUCT SPECIFICATIONS:

Construction & Materials						
Housing	Iron, PC, Aluminum					
Lens	Translucent white					
Finish	White					
Weight	ASD-BLP-14A35AC-PRM	5 lb (2.3 kg)	ASD-BLP-24D3240-PRM	9 lb (4.1 kg)		
	ASD-BLP-22D2540-PRM	4.4 lb (2 kg)	ASD-BLP-24D4040-PRM			
	ASD-BLP-22D2550-PRM		ASD-BLP-24D4050-PRM			
	ASD-BLP-22D25AC-PRM		ASD-BLP-24D5040-PRM			
			ASD-BLP-24D40AC-PRM			
Environmental System						
Work Environment	Suitable for Damp Locations, IP40					
Operating Temperature	14°F to 104°F (-10°C to +40°C)					
L70 Life	R > 60,000 hrs; C > 179,000 hrs					
Optical System						
Luminous Flux	ASD-BLP-14A35AC-PRM	2,791/3,510/4,071/4,388 lm	ASD-BLP-24D3240-PRM	4,384 lm		
	ASD-BLP-22D2540-PRM	3,225 lm	ASD-BLP-24D4040-PRM	5,160 lm		
	ASD-BLP-22D2550-PRM	3,250 lm	ASD-BLP-24D4050-PRM	5,200 lm		
	ASD-BLP-22D25AC-PRM	3,368/3,617/3,472 lm	ASD-BLP-24D5040-PRM	6,450 lm		
			ASD-BLP-24D40AC-PRM	5,423/5,750/5,605 lm		
Color Temperature	4,000 K; 5,000 K; 3,000/3,500/4,000/5,000 K; 3,500/4,000/5,000 K					
CRI	> 80					
Electrical System						
Input Voltage	120-277 V					
Max input current	ASD-BLP-14A35AC-PRM	0.35 A	ASD-BLP-24D3240-PRM	0.4 A		
	ASD-BLP-22D2540-PRM	0.3 A	ASD-BLP-24D4040-PRM			
	ASD-BLP-22D2550-PRM		ASD-BLP-24D4050-PRM			
	ASD-BLP-22D25AC-PRM	0.32 A	ASD-BLP-24D5040-PRM			0.5 A
			ASD-BLP-24D40AC-PRM			
Inrush current (Action time)	ASD-BLP-14A35AC-PRM	50 A (0.5 S)	ASD-BLP-24D3240-PRM	50 A (0.5 S)		
	ASD-BLP-22D2540-PRM		ASD-BLP-24D4040-PRM			
	ASD-BLP-22D2550-PRM	ASD-BLP-24D4050-PRM				
	ASD-BLP-22D25AC-PRM	60 A (0.5 S)	ASD-BLP-24D5040-PRM			
			ASD-BLP-24D40AC-PRM			
AC input range	min 100 V max 305 V					
Off State Power	0 W					
Surge protection	2 kV					
Power Consumption	ASD-BLP-14A35AC-PRM	20/25/30/35 W	ASD-BLP-24D3240-PRM	32 W		
	ASD-BLP-22D2540-PRM	25 W	ASD-BLP-24D4040-PRM	40 W		
	ASD-BLP-22D2550-PRM		ASD-BLP-24D4050-PRM	50 W		
	ASD-BLP-22D25AC-PRM		ASD-BLP-24D5040-PRM	40 W		
			ASD-BLP-24D40AC-PRM	40 W		
Power Factor	> 0.9					
Output voltage	38-52 V					
Max output current	ASD-BLP-14A35AC-PRM	650 mA	ASD-BLP-24D3240-PRM	650 mA		
	ASD-BLP-22D2540-PRM	550 mA	ASD-BLP-24D4040-PRM	750 mA		
	ASD-BLP-22D2550-PRM		ASD-BLP-24D4050-PRM			
	ASD-BLP-22D25AC-PRM	470 mA	ASD-BLP-24D5040-PRM			
			ASD-BLP-24D40AC-PRM	780 mA		
LED driver class	Class 2					
Dimming compatible controls						
Brand	Maxxima	Eaton	Keygma	Leviton	Lutron	
Models	MEW-DM600LV	DF10P-C1	KGM-1A010V	IP710-DLZ	DVSTV-WH	
Regular and Voluntary Certifications						
5-year limited warranty						
DesignLights Consortium (DLC) listed (Classification: Premium)						
Main: Indoor Luminaires;						
General Application: Troffer;						
Primary Use: Luminaires for Ambient Lighting of Interior Commercial Spaces						
cULus certified E473854 - Recessed mounted panel						

PACKAGE CONTENTS:

Description	Q-ty
LED Back-Lit Flat Panel	2
Box	1
Cut Sheet	2

For most up-to-date spec sheets please refer to asd-lighting.com



LED BACK-LIT FLAT PANEL

INSTALLATION GUIDE

IMPORTANT SAFETY INFORMATION:

Please read all the instructions below before installation.

- ▶ Make sure that the supply voltage corresponds to the rated product voltage.
- ▶ The product must be installed by a qualified electrician in accordance with the National Electrical Code and corresponding local codes.
- ▶ If the product is damaged, do not use it.

⚠ WARNING

RISK OF PERSONAL INJURY – READ and follow all WARNINGS and installation instructions.

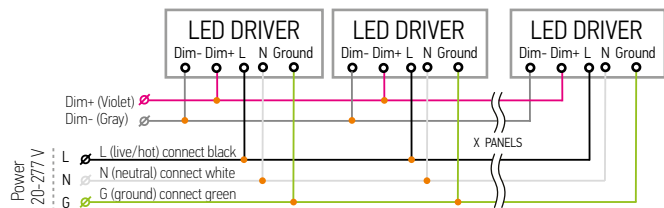
Keep or give to the owner for future reference.

Risk of cuts: Wear gloves to prevent cuts or abrasions when removing from carton, handling, installing, and maintaining this product.

Risk of electric shock: This product must be installed in accordance with the applicable installation code by a person familiar with the construction and operation of the product and the hazards involved.

Risk of Fire: Minimum 194°F supply conductors. Consult a qualified electrician to ensure correct branch circuit conductor. ASD® assumes no responsibility for claims arising out of improper or careless installation or handling of this product.

ELECTRICAL SCHEMATIC DIAGRAM:

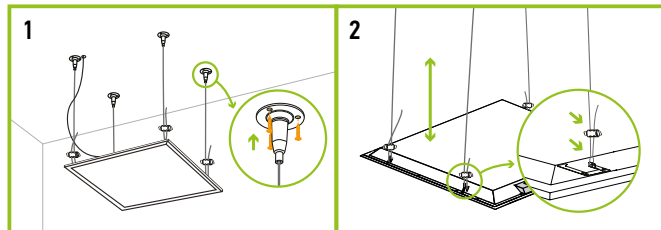


Linking limits: up to 20 panels can be linked together.
Total power of LED Panels shall not exceed the wattage of dimmer.

SUSPENDED MOUNT ASD-CHS4 ASD-CHS6

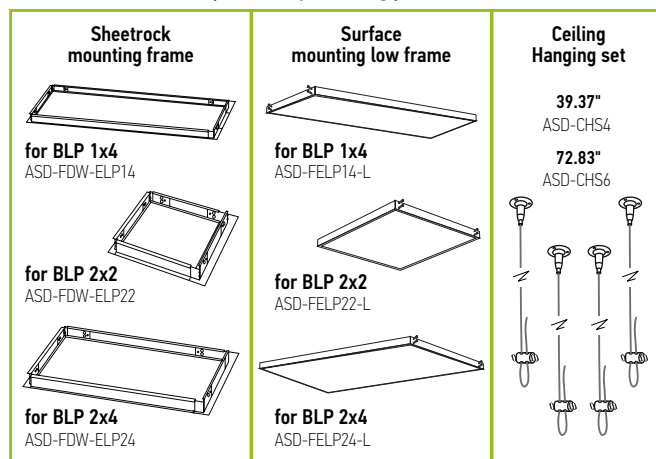
sold separately:

1. Insert the wall plugs (not included) into the ceiling and secure the suspension surface fixing to the ceiling.
2. Lock the suspension cable to the clip. Adjust the cable length to meet the height requirements. Fix the cable to the ceiling.



*For 1x4 and 2x4 installation please use 2 pcs of Ceiling Hanging set.

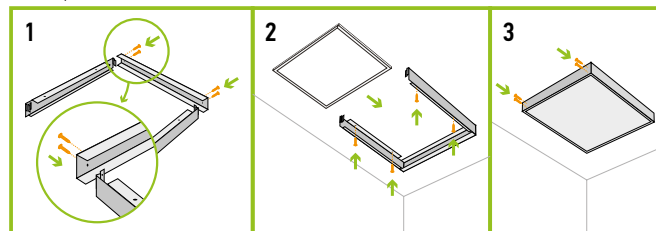
ACCESSORIES (sold separately):



SURFACE MOUNT ASD-FELP14-L

ASD-FELP22-L ASD-FELP24-L sold separately:

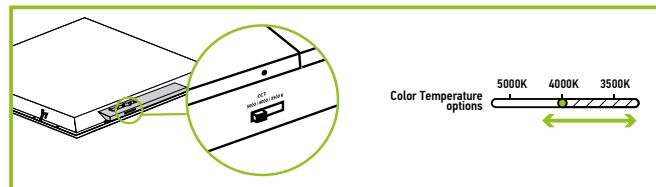
1. Connect 3 pieces of the frame to the ceiling using four screws.
2. Connect the panel wires as shown in electrical schematic diagram and insert panel into frame.
3. Attach the fourth piece and secure with screws. Power on to ensure installation is complete.



*Must remove earthquake hook before installing surface mount frame.

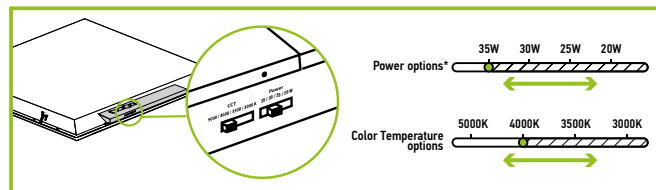
COLOR TEMPERATURE SETTINGS:

for model: ASD-BLP-22D25AC-PRM, ASD-BLP-24D40AC-PRM



POWER AND COLOR TEMPERATURE SETTINGS:

for model: ASD-BLP-14A35AC-PRM



*Power options depends on model

For most up-to-date spec sheets please refer to asd-lighting.com



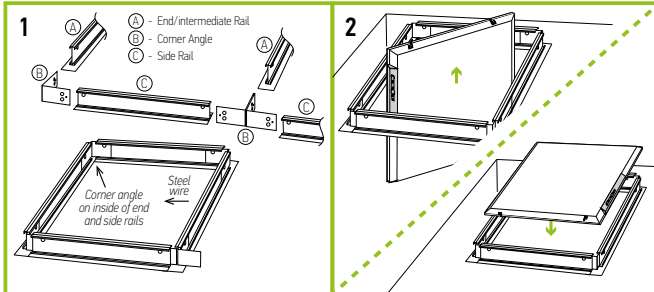
LED BACK-LIT FLAT PANEL

RECESSED SHEETROCK MOUNT ASD-FDW-ELP14

ASD-FDW-ELP22 ASD-FDW-ELP24 sold separately:

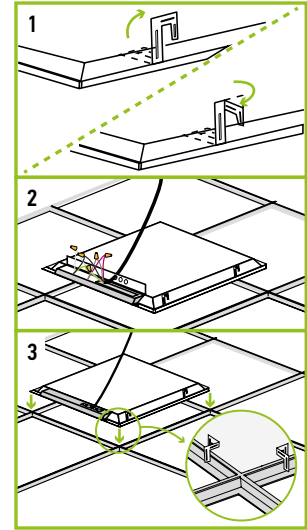
1. Following the picture above, slide part B into the inboard side of parts C and A as shown.
2. Place assembled frame into a ceiling opening and add steel wires for support as pictured below. After wiring fixture, carefully slide it through ceiling opening, rotate and drop fixture into place.

Note: For best results, attach supporting steel wires going into the ceiling to sides of frame after assembly. End rail can be used as intermediate rail for tandem row



RECESSED MOUNT:

1. Lift all mounting clips along the edges of the panel. Turn the mounting clip head.
2. Connect the wires into the junction box of the panel matching colors N, L and G using nuts.
3. Adjust into place. Ensure the clips are fastened to the ceiling's T-BAR/T-GRID.



ORDERING INFORMATION

LED BACK-LIT FLAT PANEL:

Model	UPC	Pcs. per Carton	Carton Size	Carton Weight	GTIN 14
ASD-BLP-14A35AC-PRM	810050731478	2	48.6" x 13" x 3.1"	12.1 lb	10810050731475
ASD-BLP-22D2540-PRM	810050731447	2	24.6" x 24.6" x 3.1"	11 lb	10810050731444
ASD-BLP-22D2550-PRM	810050731546	2	24.6" x 24.6" x 3.1"	11 lb	10810050731543
ASD-BLP-22D25AC-PRM	810050734684	2	24.6" x 24.6" x 3.1"	11 lb	10810050734681
ASD-BLP-24D3240-PRM	810050731553	2	48.6" x 24.8" x 3.1"	21.8 lb	10810050731550
ASD-BLP-24D4040-PRM	810050731454	2	48.6" x 24.8" x 3.1"	21.8 lb	10810050731451
ASD-BLP-24D4050-PRM	810050734455	2	48.6" x 24.8" x 3.1"	21.8 lb	10810050734452
ASD-BLP-24D5040-PRM	810050731461	2	48.6" x 24.8" x 3.1"	21.8 lb	10810050731468
ASD-BLP-24D40AC-PRM	810050733656	2	48.6" x 24.8" x 3.1"	21.8 lb	10810050733653

ACCESSORIES:

Model	Name	Materials	Weight	Dimensions
ASD-FDW-ELP14	Sheetrock mounting frame for 1x4 Panels	Iron	1.1 lb (0.5 kg)	47 1/2" x 11 3/8" x 1"
ASD-FDW-ELP22	Sheetrock mounting frame for 2x2 Panels	Iron	0.9 lb (0.4 kg)	25 5/16" x 25 5/16" x 1"
ASD-FDW-ELP24	Sheetrock mounting frame for 2x4 Panels	Iron	1.9 lb (0.9 kg)	49 1/4" x 25 5/16" x 1"
ASD-CHS4	39.37" Ceiling Hanging set for LED Panels and Troffers	Iron	0.4 lb (0.2 kg)	39.37"
ASD-CHS6	72.83" Ceiling Hanging set for LED Panels and Troffers	Iron	0.5 lb (0.2 kg)	72.83"
ASD-FELP14-L	Surface mounting low Frame for 1x4 Panels	Aluminum	2.6 lb (1.2 kg)	47 7/8" x 1 1/16" x 1 15/16"
ASD-FELP22-L	Surface mounting low Frame for 2x2 Panels	Aluminum	2.4 lb (1.1 kg)	23 3/4" x 23 3/4" x 1 15/16"
ASD-FELP24-L	Surface mounting low Frame for 2x4 Panels	Aluminum	3.6 lb (1.7 kg)	47 7/8" x 23 3/4" x 1 15/16"

Model	UPC	Pcs. per Carton	Carton Size	Carton Weight	GTIN 14
ASD-FDW-ELP14	857622006220	20	48.8" x 10.2" x 8.3"	31.5 lb	10857622006237
ASD-FDW-ELP22	855029006393	20	26.8" x 10.4" x 7.9"	25.1 lb	10855029006390
ASD-FDW-ELP24	857622006107	20	48.6" x 10.4" x 7.9"	48.9 lb	10857622006104
ASD-CHS4	859961005148	50	10.4" x 10.4" x 7.7"	23.7 lb	10859961005145
ASD-CHS6	855029006522	50	8.9" x 8.9" x 8.9"	24.9 lb	10855029006529
ASD-FELP14-L	819201021574	9	48.8" x 5.9" x 7.7"	27.5 lb	10819201021571
ASD-FELP22-L	819201021581	9	25.2" x 6.5" x 7.7"	24.5 lb	10819201021588
ASD-FELP24-L	819201021598	9	48.8" x 5.9" x 7.7"	36.8 lb	10819201021595

For most up-to-date spec sheets please refer to asd-lighting.com