



LED SECURITY WALLPACK WITH PHOTOCELL

► **DESIGN & OPTIONS** - LED SECURITY WALLPACK WITH PHOTOCELL comes with a built-in dusk-to-dawn photocell that turns the fixture on/off depending on the time of day. They are also CCT selectable, letting you set them to either 3,000K, 4,000K, or 5,000K with a simple switch. The rust and corrosion proof die-cast aluminum body provides excellent heat dissipation, while the PC clear lens ensures uniform light distribution with no glare. It comes with 120-277V and a BLACK finish.

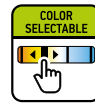
► **INSTALLATION** - This fixture can be installed on a junction box or directly on a wall. Screws, wire nuts and all necessary installation accessories are provided. Refer to installation instructions for detailed steps.

► **APPLICATION** - This LED SECURITY WALLPACK WITH PHOTOCELL is an ideal maintenance free solution for residential and commercial applications such as: houses, garages, yards, warehouses, stores, streets, paths, porches, entryways, stairways, storages, perimeter lighting and many other outdoor areas. They are Wet Locations rated and can operate in temperatures between -31 to 104°F (-35 to 40°C), allowing them to be utilized in a wide variety of applications and climates.

► **ENERGY SAVING & EFFICIENCY** - With a lifespan of 50,000 hours, these fixtures are made to last decades under normal operation! This fixture can cut your electric bill by up to 80% instantly and will save you a significant amount of money in its lifetime.

► **CERTIFICATION & WARRANTY** - Buy with confidence: ASD provides a 5-year warranty along with UL certifications to guarantee top quality products and safety!

Catalog number	
Notes	
Type	



Model	Watts	Voltage	Dimmable	Lumens	CCT	Finish	Dimensions (LxWxH)	Option
ASD-LSWP01-13NCC-PC	13W	120-277 V	-	1,573/1,618/1,622 lm	3CCT (3,000/4,000/5,000 K)	Black	8-1/8" x 5-3/8" x 2-13/16"	Photocell
ASD-LSWP01-18NCC-PC	18W	120-277 V	-	2,165/2,170/2,187 lm	3CCT (3,000/4,000/5,000 K)	Black	8-1/8" x 5-3/8" x 2-13/16"	Photocell
ASD-LSWP01-26NCC-PC	26W	120-277 V	-	3,313/3,344/3,385 lm	3CCT (3,000/4,000/5,000 K)	Black	8-1/8" x 5-3/8" x 2-13/16"	Photocell

ORDERING INFORMATION

Model	UPC	Pcs per carton	Carton size	Carton weight	GTIN 14
ASD-LSWP01-13NCC-PC	810050733694	8	12.8" x 11.7" x 9.1"	13.6 lb	30810050733695
ASD-LSWP01-18NCC-PC	810050734110	8	12.8" x 11.7" x 9.1"	13.6 lb	30810050734111
ASD-LSWP01-26NCC-PC	810050734806	8	12.8" x 11.7" x 9.1"	13.6 lb	30810050734807

For most up-to-date spec sheets please refer to asd-lighting.com

ASD LIGHTING CORP

E-mail: orders@asd-lighting.com | Web site: www.asd-lighting.com





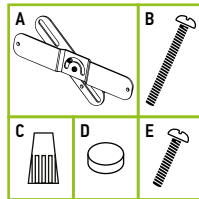
LED SECURITY WALLPACK WITH PHOTOCELL

PRODUCT SPECIFICATIONS:

Construction & Materials		
Housing	Aluminum	
Lens	PC	
Finish	Black	
Weight	1.4 lb (0.6 kg)	
Environmental system		
Work environment	Suitable for Wet Locations, IP43	
Operating temperature	-31°F to 104°F (-35°C to 40°C)	
L-70 Life	> 50,000 hrs	
Optical system		
Luminous flux	ASD-LSWP01-13NCC-PC	1,573/1,618/1,622 lm
	ASD-LSWP01-18NCC-PC	2,165/2,170/2,187 lm
	ASD-LSWP01-26NCC-PC	3,313/3,344/3,385 lm
Color temperature	3CCT (3,000/4,000/5,000 K)	
CRI	> 70	
Electrical system		
Input voltage	120-277 V	
Max input current	ASD-LSWP01-13NCC-PC	0.13 A
	ASD-LSWP01-18NCC-PC	0.18 A
	ASD-LSWP01-26NCC-PC	0.26 A
Inrush current (Action time)	10 A (0.3 S)	
Off state power	0W	
Power consumption	ASD-LSWP01-13NCC-PC	13W
	ASD-LSWP01-18NCC-PC	18W
	ASD-LSWP01-26NCC-PC	26W
Power factor	> 0.9	
Output voltage	30-40 V	
Max output current	ASD-LSWP01-13NCC-PC	0.31 A
	ASD-LSWP01-18NCC-PC	0.42 A
	ASD-LSWP01-26NCC-PC	0.63 A
Regular and voluntary certifications		
5-year limited warranty	UL certified	

PACKAGE CONTENTS:

Description	Q-ty
LED Security Wallpack with Photocell	1
Bracket (A)	1
Screw 0.8 inch (B)	2
Wire nut (C)	3
Rubber cap (D)	1
Screw 0.4 inch (E)	2
Box	1



BUILT-IN PHOTOCELL INFORMATION



- The light is always ON when luminance is 5 Lx (0.5 Fc) - 15 Lx (1.4 Fc)
- The light is always OFF when luminance is 20 Lx (1.9 Fc) - 60 Lx (5.6 Fc)

* To disable Photocell function, simply put the rubber cap on it (included).

INSTALLATION GUIDE

IMPORTANT SAFETY INFORMATION:

Please read all the instructions below before installation.

- Make sure that the supply voltage corresponds to the rated product voltage.
- The product must be installed by a qualified electrician in accordance with the National Electrical Code and corresponding local codes.
- If the product is damaged, do not use it.

⚠ WARNING

RISK OF PERSONAL INJURY – READ and follow all WARNINGS and installation instructions. Keep or give to the owner for future reference.

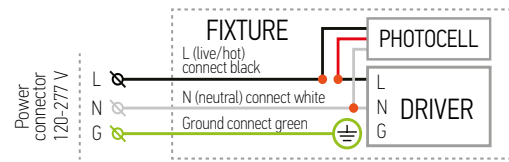
Risk of cuts: Wear gloves to prevent cuts or abrasions when removing from carton, handling, installing, and maintaining this product.

Risk of electric shock: This product must be installed in accordance with the applicable installation code by a person familiar with the construction and operation of the product and the hazards involved.

Risk of Fire: Minimum 194°F supply conductors. Consult a qualified electrician to ensure correct branch circuit conductor.

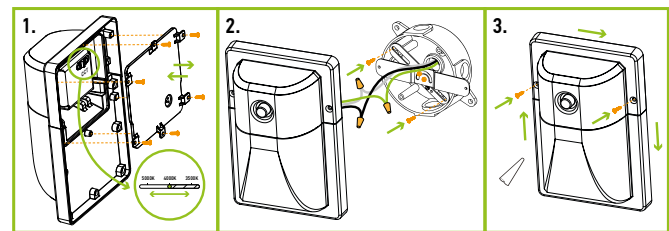
ASD® assumes no responsibility for claims arising out of improper or careless Installation or handling of this product.

ELECTRICAL SCHEMATIC DIAGRAM:



JUNCTION BOX INSTALLATION:

- Remove the six screws on the fixture's back cover and open it. Adjust the CCT and reattach the back cover with screws.
- Install the bracket on the junction-box with 2 screws. Use 2 screws to set the position of the bracket after adjusting it. Connect the wires using wire nuts: Black to Black, White to White, Green to Green.
- Use 2 screws to fix the fixture on the bracket and position it flat against the wall. After the fixture is installed on the wall, for outdoor locations it is recommended to use silicone (not included) shown in the picture below.



For most up-to-date spec sheets please refer to asd-lighting.com

ASD LIGHTING CORP

E-mail: orders@asd-lighting.com | Web site: www.asd-lighting.com

