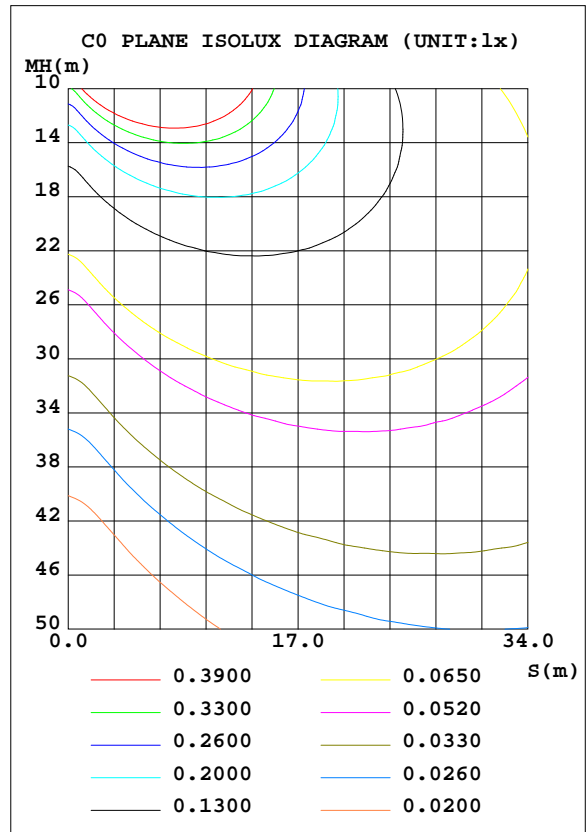
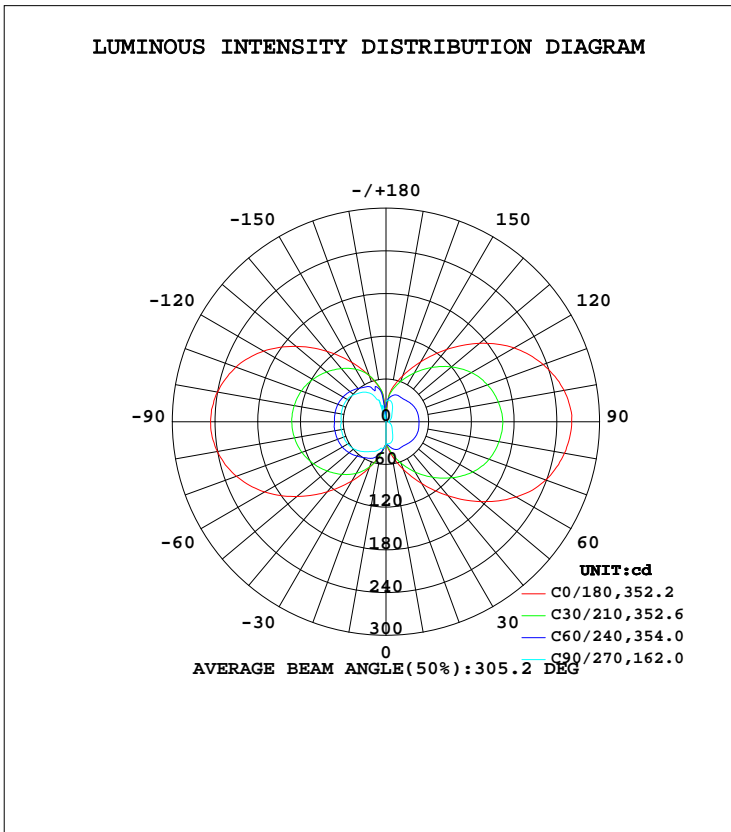


LUMINAIRE PHOTOMETRIC TEST REPORT

Test:U:120.0V I:0.1554A P:18.32W PF:0.9823 Freq:60.00Hz Lamp Flux:1218.45x1 lm		
NAME:	TYPE:LED	WEIGHT:
SPEC.:ASD-LWS27B-18D18BK_5000K	DIM.:	SERIAL No.:
MFR.: ASD Lighting Corp	SUR.:	Shielding Angle:

DATA OF LAMP		PHOTOMETRIC DATA Eff: 66.51 lm/W			
MODEL	ASD-LWS27B-18D18BK	I _{max} (cd)	261.1	S/MH(C0/180)	4.06
NOMINAL POWER(W)	18	LOR(%)	100.0	S/MH(C90/270)	2.36
RATED VOLTAGE(V)	120-277	TOTAL FLUX(lm)	1218.5	η UP, DN(C0-180)	23.5,23.9
NOMINAL FLUX(lm)	1218.45	CIE CLASS	DIFFUSE	η UP, DN(C180-360)	26.1,26.5
LAMPS INSIDE	1	η up(%)	49.6	CIBSE SHR NOM	1.25
TEST VOLTAGE(V)	120	η down(%)	50.4	CIBSE SHR MAX	1.35



C Range: 0 - 360DEG
 C Interval: 15.0DEG
 Test Speed: HIGH
 Temperature: 24.8DEG
 Operators:Alan Wang
 Test Date:18 December 2023

γ Range: 0 - 180DEG
 γ Interval: 1.0DEG
 Test System:EVERFINE GO-R5000_V2 SYSTEM V2.00.416
 Humidity: 41.6%
 Test Distance:2.500m [K=1.0423]
 Remarks:

ZONAL FLUX DIAGRAM

ZONAL FLUX DIAGRAM:

γ	C0	C45	C90	C135	C180	C225	C270	C315	γ	Φ zone	Φ total	%lum,lamp
10	48.09	40.66	31.00	40.15	46.77	46.66	37.71	48.32	0- 10	3.663	3.663	0.30,0.30
20	71.06	52.33	26.97	53.09	68.87	61.62	44.16	64.14	10- 20	14.20	17.86	1.47,1.47
30	100.2	61.43	18.62	63.45	96.05	70.42	48.54	73.69	20- 30	28.61	46.46	3.81,3.81
40	135.8	68.01	13.69	70.65	128.5	77.48	54.31	80.30	30- 40	46.23	92.70	7.61,7.61
50	174.6	74.12	10.87	77.07	163.3	84.77	59.30	86.90	40- 50	67.08	159.8	13.1,13.1
60	211.3	79.21	8.447	82.33	197.2	91.18	62.34	92.57	50- 60	89.25	249.0	20.4,20.4
70	238.7	82.17	6.221	85.67	223.6	95.60	63.60	96.47	60- 70	109.4	358.4	29.4,29.4
80	254.6	83.35	4.322	86.86	240.5	98.11	63.87	98.35	70- 80	124.0	482.4	39.6,39.6
90	260.9	83.30	3.548	86.92	246.4	98.76	62.89	99.15	80- 90	131.6	614.0	50.4,50.4
100	254.1	82.42	4.308	86.15	240.5	98.49	63.81	98.74	90-100	131.3	745.3	61.2,61.2
110	235.1	80.41	6.084	84.22	224.5	96.31	64.09	96.68	100-110	123.2	868.5	71.3,71.3
120	207.7	76.99	8.117	80.07	198.6	91.85	63.04	92.71	110-120	108.3	976.8	80.2,80.2
130	171.6	71.98	10.35	74.51	164.8	85.60	59.10	85.56	120-130	88.01	1065	87.4,87.4
140	132.6	65.93	13.06	68.01	129.2	78.40	53.92	77.12	130-140	65.80	1131	92.8,92.8
150	97.01	59.42	17.86	60.85	96.47	71.53	46.85	69.02	140-150	44.98	1176	96.5,96.5
160	68.62	50.90	26.17	51.51	69.05	63.77	32.62	53.28	150-160	27.19	1203	98.7,98.7
170	46.50	39.57	30.77	39.66	46.89	47.66	22.81	39.48	160-170	13.01	1216	99.8,99.8
180	0	0	28.71	0	0.0740	0.0803	0.0850	0.1010	170-180	2.642	1218	100,100
DEG	LUMINOUS INTENSITY:cd									UNIT:lm		

Conical surface Flux(90deg): 123.48 lm

%lum = 10.1%

%lamp = 10.1%

Conical surface Flux(120deg): 249.02 lm

%lum = 20.4%

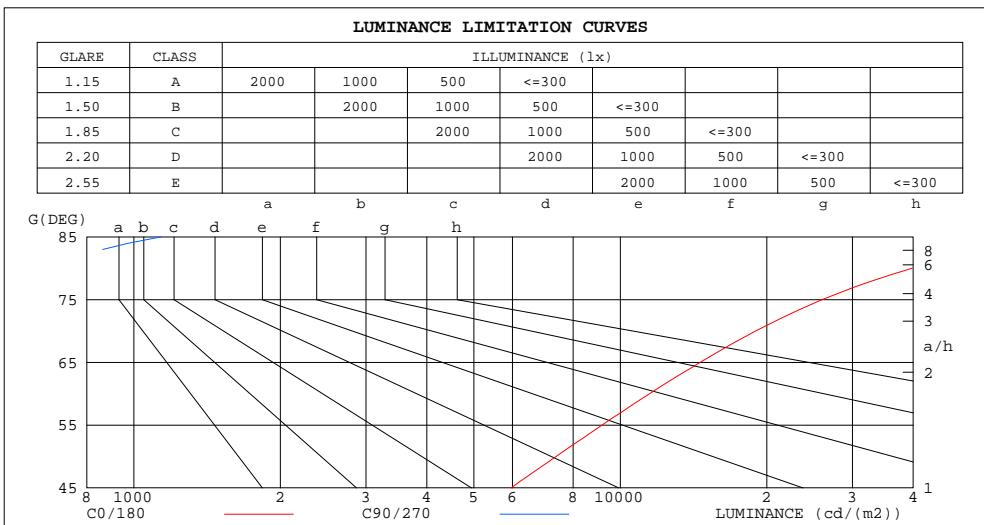
%lamp = 20.4%

C Range: 0 - 360DEG
 C Interval: 15.0DEG
 Test Speed: HIGH
 Temperature: 24.8DEG
 Operators: Alan Wang
 Test Date: 18 December 2023

γ Range: 0 - 180DEG
 γ Interval: 1.0DEG
 Test System: EVERFINE GO-R5000_V2 SYSTEM V2.00.416
 Humidity: 41.6%
 Test Distance: 2.500m [K=1.0423]
 Remarks:

LUMINANCE LIMITATION CURVES

Test:U:120.0V I:0.1554A P:18.32W PF:0.9823 Freq:60.00Hz Lamp Flux:1218.45x1 lm		
NAME:	TYPE:LED	WEIGHT:
SPEC.:ASD-LWS27B-18D18BK_5000K	DIM.:	SERIAL No.:
MFR.: ASD Lighting Corp	SUR.:	Shielding Angle:



LUMINANCE cd/(m2)		
G(DEG)	C0/180	C90/270
85	80727	1138
80	39839	676
75	26010	549
70	18966	494
65	14600	469
60	11484	459
55	9170	456
50	7380	460
45	5961	468

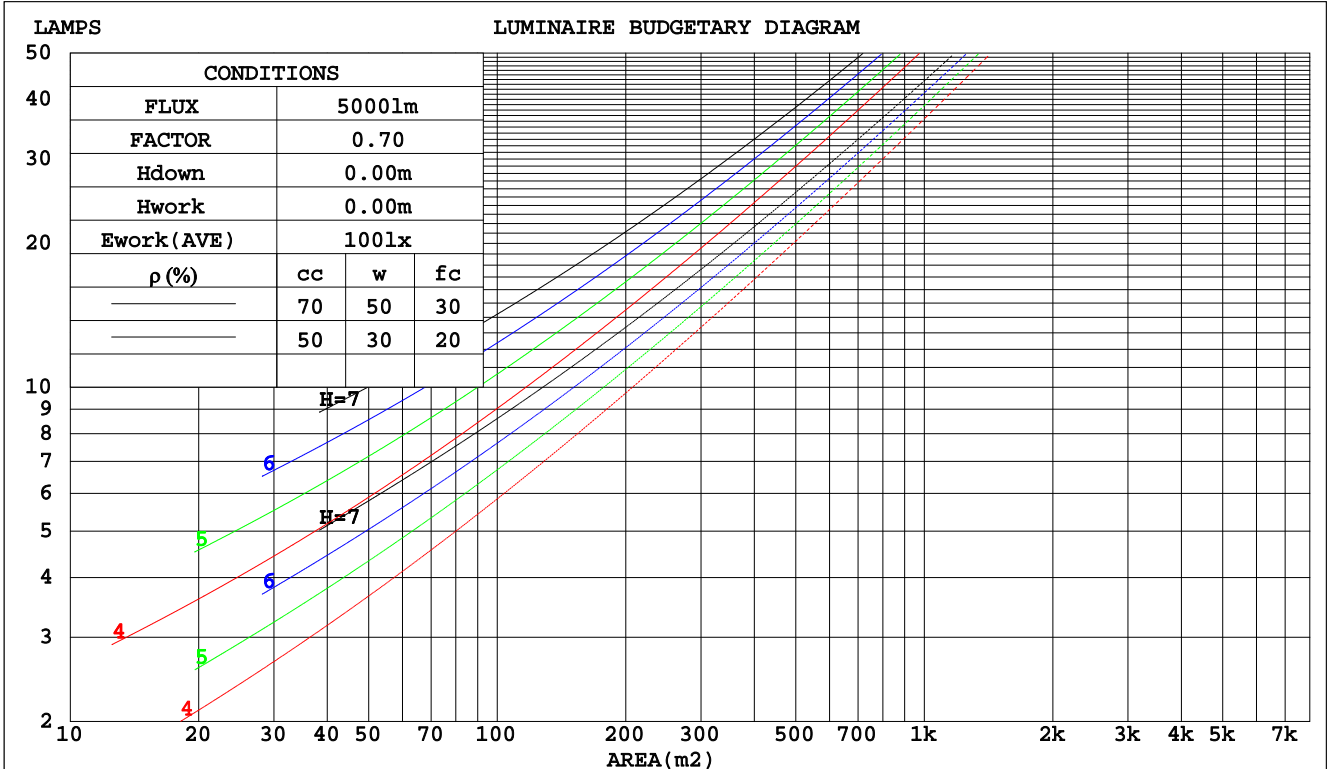
C Range: 0 - 360DEG
 C Interval: 15.0DEG
 Test Speed: HIGH
 Temperature: 24.8DEG
 Operators: Alan Wang
 Test Date: 18 December 2023

γ Range: 0 - 180DEG
 γ Interval: 1.0DEG
 Test System: EVERFINE GO-R5000_V2 SYSTEM V2.00.416
 Humidity: 41.6%
 Test Distance: 2.500m [K=1.0423]
 Remarks:

CU AND LUMINAIRE BUDGETARY ESTIMATE DIAGRAM

Test:U:120.0V I:0.1554A P:18.32W PF:0.9823 Freq:60.00Hz Lamp Flux:1218.45x1 lm		
NAME:	TYPE:LED	WEIGHT:
SPEC.:ASD-LWS27B-18D18BK_5000K	DIM.:	SERIAL No.:
MFR.: ASD Lighting Corp	SUR.:	Shielding Angle:

pcc	80%			70%			50%			30%			10%			0
	50%	30%	10%	50%	30%	10%	50%	30%	10%	50%	30%	10%	50%	30%	10%	0
pw																0
pfc	20%			20%			20%			20%			20%			0
RCR	RCR:Room Cavity Ratio						Coefficients of Utilization(CU)									
0.0	1.07	1.07	1.07	.99	.99	.99	.84	.84	.84	.69	.69	.69	.56	.56	.56	.50
1.0	.86	.80	.74	.79	.73	.68	.65	.61	.57	.53	.50	.47	.41	.39	.37	.31
2.0	.72	.63	.56	.66	.58	.52	.54	.48	.43	.43	.39	.35	.33	.30	.27	.22
3.0	.61	.52	.45	.56	.48	.41	.46	.39	.34	.37	.31	.27	.28	.24	.21	.16
4.0	.53	.44	.36	.49	.40	.33	.40	.33	.28	.32	.26	.22	.24	.20	.16	.12
5.0	.47	.37	.30	.43	.34	.28	.35	.28	.23	.28	.22	.18	.21	.17	.13	.10
6.0	.41	.32	.25	.38	.29	.23	.31	.24	.19	.25	.19	.15	.19	.15	.11	.08
7.0	.37	.28	.22	.34	.26	.20	.28	.21	.16	.22	.17	.13	.17	.13	.10	.07
8.0	.33	.25	.19	.31	.23	.17	.25	.19	.14	.20	.15	.11	.15	.11	.08	.06
9.0	.30	.22	.16	.28	.20	.15	.23	.17	.12	.18	.13	.10	.14	.10	.07	.05
10.0	.28	.20	.14	.25	.18	.13	.21	.15	.11	.17	.12	.09	.13	.09	.06	.04



C Range: 0 - 360DEG
 C Interval: 15.0DEG
 Test Speed: HIGH
 Temperature: 24.8DEG
 Operators: Alan Wang
 Test Date: 18 December 2023

γ Range: 0 - 180DEG
 γ Interval: 1.0DEG
 Test System: EVERFINE GO-R5000_V2 SYSTEM V2.00.416
 Humidity: 41.6%
 Test Distance: 2.500m [K=1.0423]
 Remarks:

WEC AND CCEC

Test:U:120.0V I:0.1554A P:18.32W PF:0.9823 Freq:60.00Hz Lamp Flux:1218.45x1 lm		
NAME:	TYPE:LED	WEIGHT:
SPEC.:ASD-LWS27B-18D18BK_5000K	DIM.:	SERIAL No.:
MFR.: ASD Lighting Corp	SUR.:	Shielding Angle:

ρcc	80%			70%			50%			30%			10%			0
ρw	50%	30%	10%	50%	30%	10%	50%	30%	10%	50%	30%	10%	50%	30%	10%	0
ρfc	20%			20%			20%			20%			20%			0
RCR	RCR:Room Cavity Ratio						Wall Exitance Coefficients(WEC)									
0.0																
1.0	.430	.244	.077	.407	.232	.074	.366	.210	.067	.327	.189	.061	.292	.169	.054	
2.0	.355	.195	.060	.335	.184	.057	.296	.165	.051	.261	.146	.046	.228	.129	.041	
3.0	.308	.164	.049	.289	.155	.047	.254	.138	.042	.221	.121	.037	.191	.106	.033	
4.0	.273	.142	.042	.255	.134	.040	.223	.118	.035	.193	.104	.031	.166	.090	.027	
5.0	.245	.125	.036	.229	.118	.034	.200	.104	.031	.172	.091	.027	.146	.078	.024	
6.0	.223	.112	.032	.208	.105	.030	.181	.093	.027	.155	.081	.024	.132	.069	.021	
7.0	.204	.101	.029	.191	.095	.027	.166	.084	.024	.142	.073	.021	.120	.062	.018	
8.0	.188	.092	.026	.176	.087	.024	.153	.076	.022	.131	.066	.019	.110	.056	.016	
9.0	.175	.085	.024	.163	.080	.022	.141	.070	.020	.121	.061	.017	.101	.052	.015	
10.0	.163	.078	.022	.152	.074	.021	.132	.065	.018	.113	.056	.016	.094	.047	.014	

ρcc	80%			70%			50%			30%			10%			0
ρw	50%	30%	10%	50%	30%	10%	50%	30%	10%	50%	30%	10%	50%	30%	10%	0
ρfc	20%			20%			20%			20%			20%			0
RCR	RCR:Room Cavity Ratio						Ceiling Cavity Exitance Coefficients(CCEC)									
0.0	.568	.568	.568	.486	.486	.486	.332	.332	.332	.190	.190	.190	.061	.061	.061	
1.0	.570	.536	.506	.487	.460	.435	.333	.317	.301	.192	.183	.175	.061	.059	.057	
2.0	.564	.515	.474	.483	.444	.410	.331	.307	.286	.191	.179	.168	.061	.058	.055	
3.0	.557	.500	.455	.478	.432	.394	.328	.300	.277	.189	.175	.163	.061	.057	.053	
4.0	.550	.489	.442	.472	.422	.384	.325	.294	.271	.188	.172	.160	.060	.056	.053	
5.0	.543	.480	.434	.466	.415	.377	.321	.290	.266	.186	.170	.158	.060	.056	.052	
6.0	.535	.473	.428	.460	.409	.373	.317	.287	.264	.184	.169	.157	.059	.055	.052	
7.0	.528	.467	.423	.454	.404	.369	.314	.284	.261	.182	.167	.156	.059	.055	.051	
8.0	.522	.461	.420	.449	.400	.366	.311	.281	.260	.181	.166	.155	.058	.054	.051	
9.0	.516	.457	.417	.444	.397	.364	.308	.279	.259	.179	.165	.154	.058	.054	.051	
10.0	.510	.453	.415	.439	.393	.362	.305	.277	.258	.178	.164	.154	.058	.054	.051	

C Range: 0 - 360DEG
 C Interval: 15.0DEG
 Test Speed: HIGH
 Temperature: 24.8DEG
 Operators: Alan Wang
 Test Date: 18 December 2023

γ Range: 0 - 180DEG
 γ Interval: 1.0DEG
 Test System: EVERFINE GO-R5000_V2 SYSTEM V2.00.416
 Humidity: 41.6%
 Test Distance: 2.500m [K=1.0423]
 Remarks:

UGR(Unified Glare Rating) Table

Test:U:120.0V I:0.1554A P:18.32W PF:0.9823 Freq:60.00Hz Lamp Flux:1218.45x1 lm										
NAME:					TYPE:LED			WEIGHT:		
SPEC.:ASD-LWS27B-18D18BK_5000K					DIM.:			SERIAL No.:		
MFR.: ASD Lighting Corp					SUR.:			Shielding Angle:		
ceiling/cavity	0.7	0.7	0.5	0.5	0.3	0.7	0.7	0.5	0.5	0.3
walls	0.5	0.3	0.5	0.3	0.3	0.5	0.3	0.5	0.3	0.3
working plane	0.2	0.2	0.2	0.2	0.2	0.2	0.2	0.2	0.2	0.2
Room dimensions	Viewed crosswise					Viewed endwise				
x = 2H y = 2H	19.0	20.1	19.8	21.0	22.1	7.4	8.5	8.3	9.4	10.6
3H	23.3	24.3	24.2	25.2	26.4	8.6	9.6	9.5	10.5	11.7
4H	25.6	26.5	26.5	27.5	28.7	9.2	10.1	10.1	11.0	12.2
6H	28.0	28.9	28.9	29.8	31.1	9.7	10.6	10.6	11.5	12.7
8H	29.3	30.2	30.2	31.1	32.3	9.9	10.8	10.8	11.7	13.0
12H	30.7	31.6	31.7	32.5	33.8	10.2	11.0	11.1	12.0	13.2
4H 2H	19.0	19.9	19.9	20.9	22.1	12.3	13.3	13.2	14.2	15.4
3H	23.6	24.5	24.5	25.4	26.7	13.7	14.5	14.6	15.4	16.7
4H	26.2	27.0	27.1	27.9	29.2	14.3	15.0	15.2	16.0	17.3
6H	29.0	29.7	30.0	30.7	32.0	14.8	15.5	15.7	16.5	17.7
8H	30.5	31.1	31.5	32.1	33.4	15.0	15.6	15.9	16.6	17.9
12H	32.1	32.7	33.1	33.7	35.0	15.2	15.8	16.1	16.8	18.1
8H 4H	26.2	26.8	27.2	27.8	29.1	18.1	18.8	19.1	19.8	21.1
6H	29.3	29.9	30.3	30.9	32.2	19.0	19.6	20.0	20.6	21.9
8H	31.1	31.6	32.1	32.6	33.9	19.4	19.9	20.4	20.9	22.2
12H	33.1	33.5	34.1	34.6	35.9	19.6	20.1	20.7	21.1	22.5
12H 4H	26.1	26.7	27.1	27.7	29.0	19.7	20.3	20.7	21.3	22.7
6H	29.3	29.8	30.3	30.8	32.1	20.9	21.4	21.9	22.4	23.7
8H	31.1	31.6	32.2	32.6	34.0	21.4	21.8	22.4	22.9	24.2
Variations with the observer position at spacings:										
S = 1.0H	+ 0.1 / - 0.1					+ 0.1 / - 0.1				
1.5H	+ 0.3 / - 0.3					+ 0.2 / - 0.1				
2.0H	+ 0.3 / - 0.4					+ 0.4 / - 0.3				

CIE Pub.117, 1218 lm Total Lamp Luminous Flux Corrected (8log(F/F0) = 0.7)
 Area: 0.0368 m2

C Range: 0 - 360DEG
 C Interval: 15.0DEG
 Test Speed: HIGH
 Temperature: 24.8DEG
 Operators: Alan Wang
 Test Date: 18 December 2023

γ Range: 0 - 180DEG
 γ Interval: 1.0DEG
 Test System: EVERFINE GO-R5000_V2 SYSTEM V2.00.416
 Humidity: 41.6%
 Test Distance: 2.500m [K=1.0423]
 Remarks:

UTILIZATION FACTORS TABLE

Test:U:120.0V I:0.1554A P:18.32W PF:0.9823 Freq:60.00Hz Lamp Flux:1218.45x1 lm		
NAME:	TYPE:LED	WEIGHT:
SPEC.:ASD-LWS27B-18D18BK_5000K	DIM.:	SERIAL No.:
MFR.: ASD Lighting Corp	SUR.:	Shielding Angle:

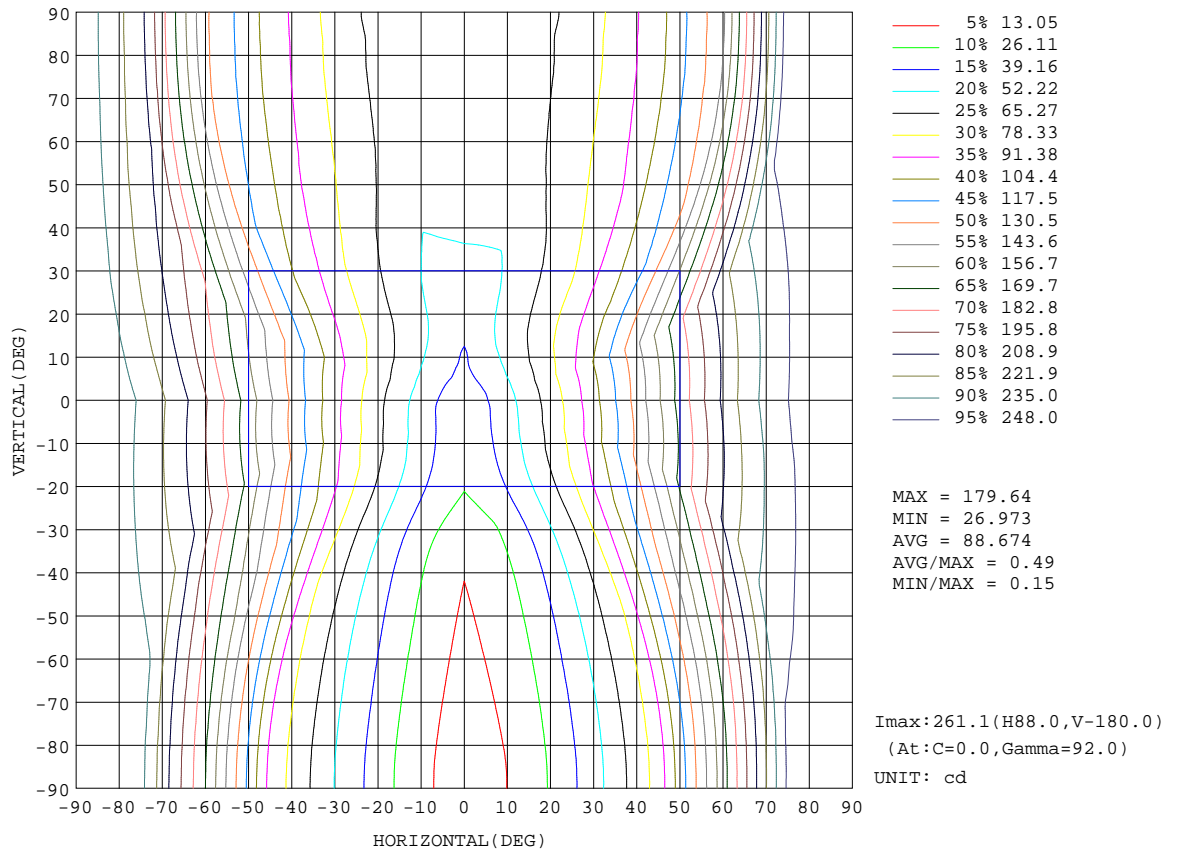
REFLECTANCE										
Ceiling	0.8	0.8	0.8	0.7	0.7	0.7	0.5	0.5	0.5	0
Walls	0.7	0.5	0.3	0.7	0.5	0.3	0.7	0.5	0.3	0
Working plane	0.2	0.2	0.2	0.2	0.2	0.2	0.2	0.2	0.2	0
ROOM INDEX	UTILIZATION FACTORS(PERCENT) $k(RI) \times RCR = 5$									
k = 0.60	35	22	14	33	21	14	29	19	13	5
0.80	43	29	20	40	27	19	35	24	17	8
1.00	50	35	26	47	33	25	41	31	22	11
1.25	57	42	32	53	40	31	45	35	27	13
1.50	62	48	38	58	45	36	49	39	31	16
2.00	70	57	47	65	53	44	55	45	38	20
2.50	75	63	53	69	58	50	59	50	43	23
3.00	79	68	59	73	63	55	62	54	47	25
4.00	85	75	67	78	69	62	66	59	53	29
5.00	88	80	72	81	74	67	69	63	57	32
ROOM INDEX	UF(total)									Direct
According to DIN EN 13032-2 2004			Suspended				SHRNOM = 1.25			

C Range: 0 - 360DEG
 C Interval: 15.0DEG
 Test Speed: HIGH
 Temperature: 24.8DEG
 Operators: Alan Wang
 Test Date: 18 December 2023

γ Range: 0 - 180DEG
 γ Interval: 1.0DEG
 Test System: EVERFINE GO-R5000_V2 SYSTEM V2.00.416
 Humidity: 41.6%
 Test Distance: 2.500m [K=1.0423]
 Remarks:

ISOCANDELA DIAGRAM

Test:U:120.0V I:0.1554A P:18.32W PF:0.9823 Freq:60.00Hz Lamp Flux:1218.45x1 lm		
NAME:	TYPE:LED	WEIGHT:
SPEC.:ASD-LWS27B-18D18BK_5000K	DIM.:	SERIAL No.:
MFR.: ASD Lighting Corp	SUR.:	Shielding Angle:

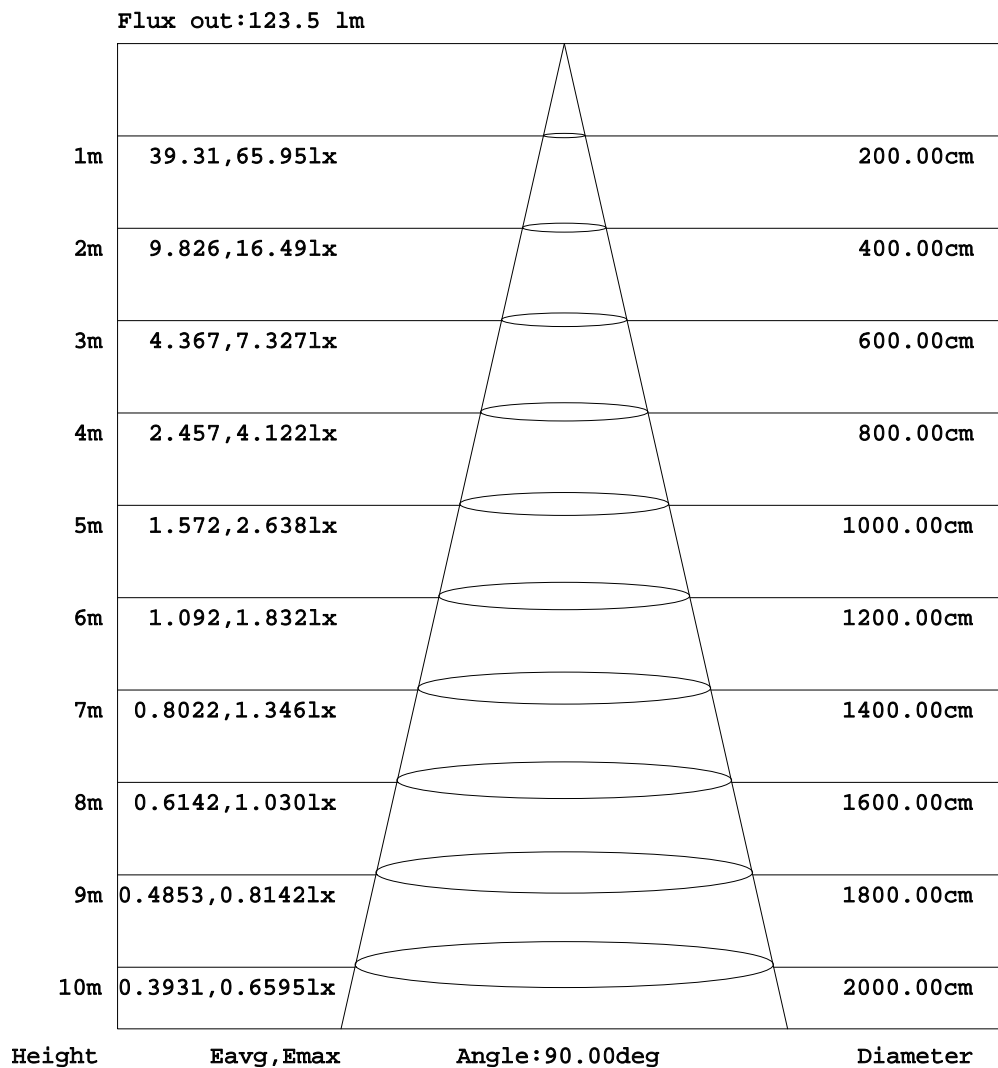


C Range: 0 - 360DEG
 C Interval: 15.0DEG
 Test Speed: HIGH
 Temperature: 24.8DEG
 Operators: Alan Wang
 Test Date: 18 December 2023

γ Range: 0 - 180DEG
 γ Interval: 1.0DEG
 Test System: EVERFINE GO-R5000_V2 SYSTEM V2.00.416
 Humidity: 41.6%
 Test Distance: 2.500m [K=1.0423]
 Remarks:

AAI Figure

Test:U:120.0V I:0.1554A P:18.32W PF:0.9823 Freq:60.00Hz Lamp Flux:1218.45x1 lm		
NAME:	TYPE:LED	WEIGHT:
SPEC.:ASD-LWS27B-18D18BK_5000K	DIM.:	SERIAL No.:
MFR.: ASD Lighting Corp	SUR.:	Shielding Angle:



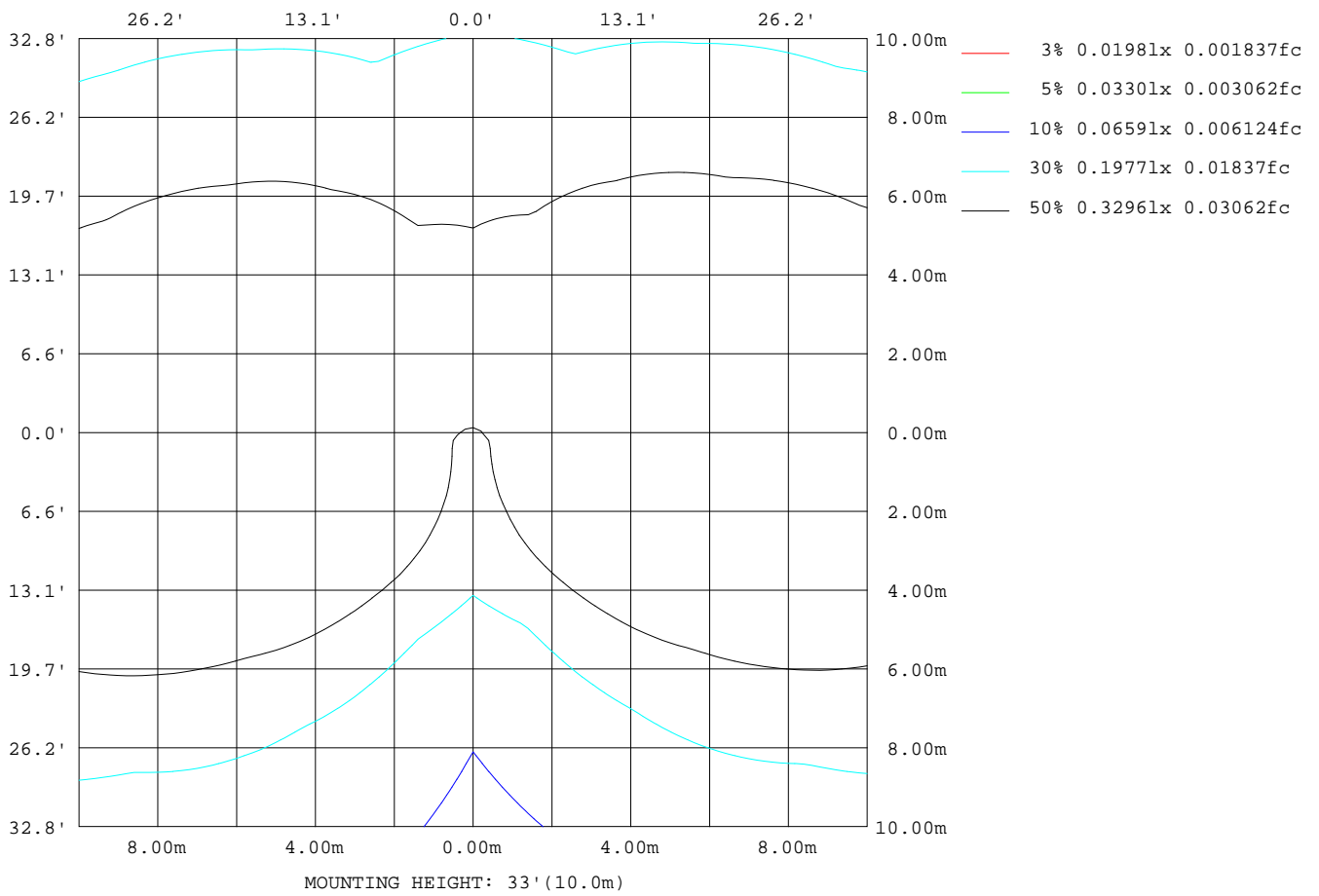
Note:The Curves indicate the illuminated area and the average illumination when the luminaire is at different distance.

C Range: 0 - 360DEG
 C Interval: 15.0DEG
 Test Speed: HIGH
 Temperature: 24.8DEG
 Operators:Alan Wang
 Test Date:18 December 2023

γ Range: 0 - 180DEG
 γ Interval: 1.0DEG
 Test System:EVERFINE GO-R5000_V2 SYSTEM V2.00.416
 Humidity: 41.6%
 Test Distance:2.500m [K=1.0423]
 Remarks:

ISOLUX DIAGRAM

Test:U:120.0V I:0.1554A P:18.32W PF:0.9823 Freq:60.00Hz Lamp Flux:1218.45x1 lm		
NAME:	TYPE:LED	WEIGHT:
SPEC.:ASD-LWS27B-18D18BK_5000K	DIM.:	SERIAL No.:
MFR.: ASD Lighting Corp	SUR.:	Shielding Angle:



C Range: 0 - 360DEG
 C Interval: 15.0DEG
 Test Speed: HIGH
 Temperature: 24.8DEG
 Operators: Alan Wang
 Test Date: 18 December 2023

γ Range: 0 - 180DEG
 γ Interval: 1.0DEG
 Test System: EVERFINE GO-R5000_V2 SYSTEM V2.00.416
 Humidity: 41.6%
 Test Distance: 2.500m [K=1.0423]
 Remarks:

LED Avg.L Report

Test:U:120.0V I:0.1554A P:18.32W PF:0.9823 Freq:60.00Hz Lamp Flux:1218.45x1 lm		
NAME:	TYPE:LED	WEIGHT:
SPEC.:ASD-LWS27B-18D18BK_5000K	DIM.:	SERIAL No.:
MFR.: ASD Lighting Corp	SUR.:	Shielding Angle:

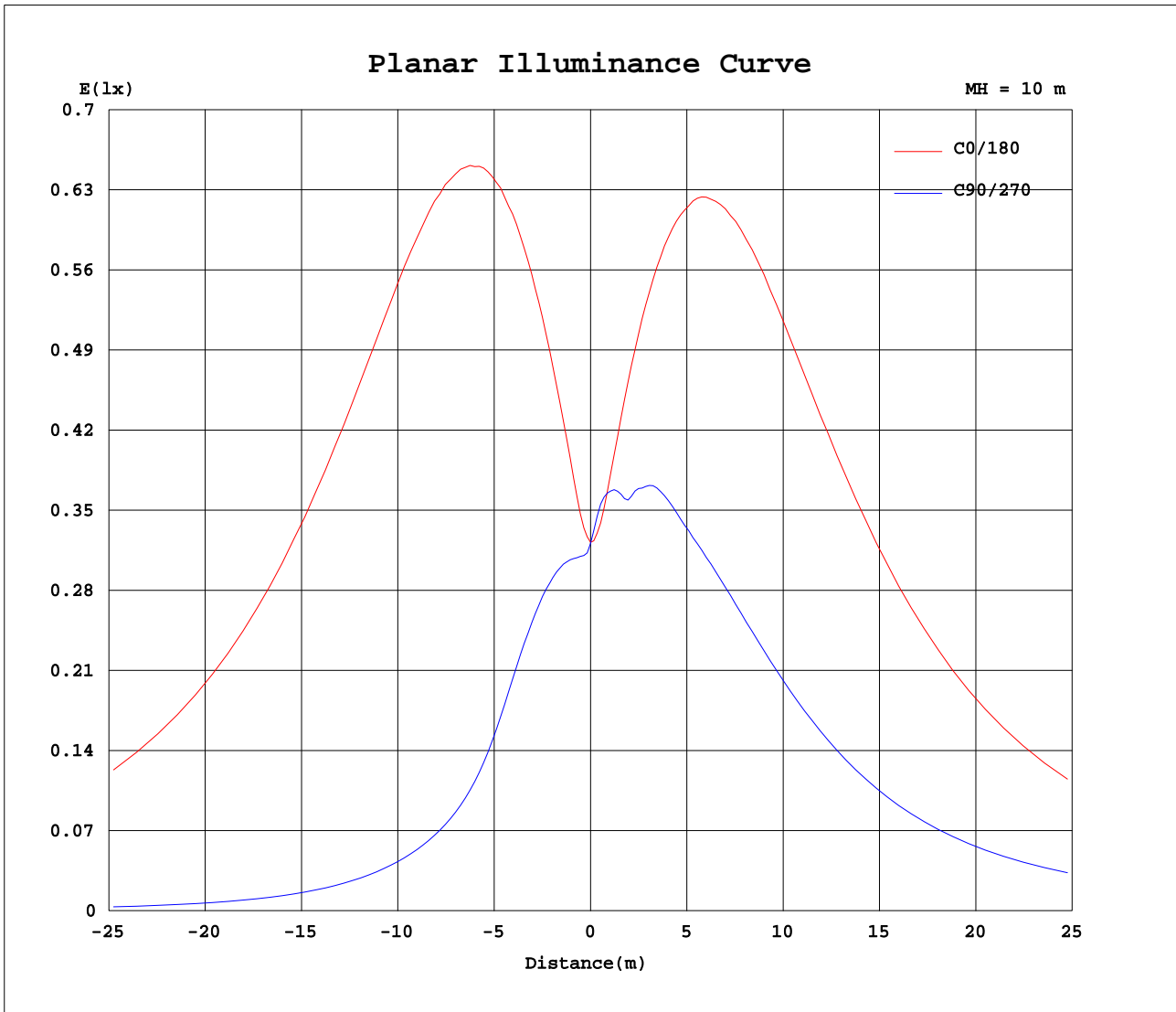
AvgL	cd/m2
L_0~180(65)av	14103
L_0~180(75)av	25268
L_0~180(85)av	78574
L_90~270(65)av	2264
L_90~270(75)av	3616
L_90~270(85)av	10552
L_45(65)av	5684
L_45(75)av	9553
L_45(85)av	28706

Standard: GB/T 29293-2012

C Range: 0 - 360DEG
C Interval: 15.0DEG
Test Speed: HIGH
Temperature: 24.8DEG
Operators: Alan Wang
Test Date: 18 December 2023

γ Range: 0 - 180DEG
 γ Interval: 1.0DEG
Test System: EVERFINE GO-R5000_V2 SYSTEM V2.00.416
Humidity: 41.6%
Test Distance: 2.500m [K=1.0423]
Remarks:

Planar Illuminance Curve



C Range: 0 - 360DEG
 C Interval: 15.0DEG
 Test Speed: HIGH
 Temperature: 24.8DEG
 Operators: Alan Wang
 Test Date: 18 December 2023

γ Range: 0 - 180DEG
 γ Interval: 1.0DEG
 Test System: EVERFINE GO-R5000_V2 SYSTEM V2.00.416
 Humidity: 41.6%
 Test Distance: 2.500m [K=1.0423]
 Remarks:

LUMINOUS DISTRIBUTION INTENSITY DATA

Test:U:120.0V I:0.1554A P:18.32W PF:0.9823 Freq:60.00Hz Lamp Flux:1218.45x1 lm		
NAME:	TYPE:LED	WEIGHT:
SPEC.:ASD-LWS27B-18D18BK_5000K	DIM.:	SERIAL No.:
MFR.: ASD Lighting Corp	SUR.:	Shielding Angle:

Table--1

UNIT: cd

C(DEG) γ (DEG)	0	15	30	45	60	75	90	105	120	135	150	165	180	195	210	225	240	255	270
0	32.2	32.3	32.2	32.2	32.2	32.1	32.1	32.0	32.0	32.0	31.9	32.0	32.2	32.3	32.2	32.2	32.2	32.1	32.1
5	38.2	37.1	36.1	34.7	33.0	31.6	31.1	31.5	32.6	33.9	35.1	35.9	37.1	37.9	38.2	38.0	37.8	37.2	36.9
10	48.1	46.4	44.2	40.7	36.5	32.4	31.0	32.5	36.3	40.1	43.3	45.2	46.8	48.1	48.0	46.7	44.7	41.2	37.7
15	59.0	56.8	52.7	46.6	39.4	32.5	29.7	33.2	39.9	46.7	52.3	55.5	57.4	59.0	57.9	54.8	50.6	45.4	41.0
20	71.1	68.2	61.7	52.3	41.5	31.5	27.0	32.7	42.7	53.1	61.7	66.8	68.9	70.4	67.4	61.6	54.6	47.3	44.2
25	84.8	81.0	71.3	57.3	42.3	28.9	22.8	30.8	44.1	58.7	71.7	79.2	81.7	82.2	76.1	66.6	56.8	48.0	46.0
30	100	95.1	81.3	61.4	42.0	26.1	18.6	28.5	44.3	63.5	82.0	92.8	96.1	94.8	83.6	70.4	58.5	48.9	48.5
35	117	111	91.6	64.9	41.8	24.1	15.7	27.0	44.6	67.2	92.6	108	112	108	90.4	73.9	60.6	50.5	51.4
40	136	127	102	68.0	42.5	23.1	13.7	26.5	45.5	70.6	103	124	129	121	96.5	77.5	63.1	52.2	54.3
45	155	145	112	71.1	43.4	22.6	12.2	26.4	46.7	73.9	114	141	146	134	102	81.3	65.6	53.7	57.0
50	175	164	122	74.1	44.4	22.1	10.9	26.3	48.0	77.1	125	158	163	148	108	84.8	67.8	55.1	59.3
55	194	182	132	76.8	45.3	21.7	9.63	26.2	49.3	79.9	135	174	181	161	113	88.2	69.5	56.1	61.1
60	211	199	141	79.2	46.2	21.2	8.45	26.0	50.4	82.3	145	191	197	174	118	91.2	71.1	56.6	62.3
65	227	214	148	80.9	46.7	20.6	7.30	25.7	51.2	84.1	153	204	212	185	122	93.8	72.0	56.7	63.1
70	239	227	154	82.2	47.0	20.0	6.22	25.3	51.9	85.7	159	216	224	195	126	95.6	72.4	56.6	63.6
75	248	236	158	82.9	47.0	19.3	5.23	24.8	52.1	86.5	164	227	234	202	129	97.0	72.8	56.2	63.7
80	255	244	161	83.3	46.8	18.7	4.32	24.3	52.1	86.9	168	234	241	208	131	98.1	72.9	56.1	63.9
85	259	248	163	83.2	46.6	18.1	3.65	23.8	51.9	87.1	169	238	245	212	132	98.9	73.1	56.1	64.0
90	261	250	164	83.3	46.5	18.0	3.55	23.7	51.9	86.9	170	239	246	213	132	98.8	72.4	54.9	62.9
95	259	247	163	82.8	46.4	18.0	3.69	23.7	51.7	86.6	168	236	245	212	132	98.9	72.6	55.2	63.4
100	254	242	160	82.4	46.3	18.5	4.31	24.1	51.7	86.1	165	232	240	209	131	98.5	72.7	55.4	63.8
105	246	234	157	81.5	46.2	18.9	5.16	24.5	51.4	85.4	162	225	233	203	129	97.7	72.6	55.6	64.1
110	235	223	152	80.4	45.9	19.5	6.08	24.9	51.0	84.2	156	216	225	197	127	96.3	72.0	55.5	64.1
115	222	210	146	78.8	45.4	19.9	7.08	25.1	50.2	82.3	150	204	212	188	123	94.2	71.0	55.1	63.8
120	208	196	138	77.0	44.6	20.3	8.12	25.3	49.2	80.1	141	189	199	177	119	91.9	69.8	54.5	63.0
125	190	178	130	74.6	43.7	20.7	9.22	25.4	47.9	77.5	132	173	182	164	114	88.8	68.1	53.7	61.5
130	172	160	120	72.0	42.8	21.1	10.4	25.4	46.5	74.5	121	156	165	151	109	85.6	66.2	52.5	59.1
135	152	142	110	68.9	41.6	21.4	11.6	25.4	45.1	71.3	111	139	147	137	103	82.0	63.7	50.3	56.4
140	133	125	99.6	65.9	40.7	22.0	13.1	25.5	43.7	68.0	100	122	129	123	97.6	78.4	61.2	47.9	53.9
145	114	108	89.3	62.8	40.3	22.9	15.0	25.9	42.7	64.5	89.9	106	112	110	91.7	74.9	58.6	45.2	51.0
150	97.0	92.3	79.0	59.4	40.3	24.8	17.9	27.2	42.3	60.8	79.8	91.7	96.5	96.5	85.3	71.5	56.6	42.6	46.9
155	81.9	78.4	69.3	55.6	40.7	27.6	21.9	29.5	42.2	56.6	70.0	78.1	82.0	83.5	78.0	67.5	54.5	40.3	40.1
160	68.6	66.2	60.1	50.9	40.3	30.4	26.2	31.7	41.3	51.5	60.4	65.9	69.1	70.5	69.2	63.8	46.3	35.8	32.6
165	57.0	55.1	51.4	45.5	38.5	31.7	29.2	32.6	39.1	45.9	51.5	54.9	57.4	58.3	58.9	56.8	50.8	37.3	18.6
170	46.5	44.6	42.9	39.6	35.6	31.8	30.8	32.3	35.9	39.7	42.8	44.8	46.9	47.2	48.1	47.7	44.2	36.5	22.8
175	26.6	30.9	31.0	32.6	32.0	30.9	30.6	31.0	32.0	33.3	34.5	33.3	29.6	26.8	19.0	15.8	5.98	2.75	0.52
180	0.00	0.00	0.00	0.00	20.2	28.7	28.7	28.2	15.4	0.00	0.00	0.00	0.07	0.08	0.08	0.08	0.07	0.09	0.08

C Range: 0 - 360DEG
 C Interval: 15.0DEG
 Test Speed: HIGH
 Temperature: 24.8DEG
 Operators: Alan Wang
 Test Date: 18 December 2023

γ Range: 0 - 180DEG
 γ Interval: 1.0DEG
 Test System: EVERFINE GO-R5000_V2 SYSTEM V2.00.416
 Humidity: 41.6%
 Test Distance: 2.500m [K=1.0423]
 Remarks:

LUMINOUS DISTRIBUTION INTENSITY DATA

Test:U:120.0V I:0.1554A P:18.32W PF:0.9823 Freq:60.00Hz Lamp Flux:1218.45x1 lm		
NAME:	TYPE:LED	WEIGHT:
SPEC.:ASD-LWS27B-18D18BK_5000K	DIM.:	SERIAL No.:
MFR.: ASD Lighting Corp	SUR.:	Shielding Angle:

Table--2

UNIT: cd

C(DEG) γ (DEG)	285	300	315	330	345														
0	32.0	32.0	32.0	31.9	32.0														
5	37.6	38.4	38.9	39.1	38.6														
10	42.5	46.1	48.3	49.4	49.1														
15	46.8	52.5	56.9	60.0	60.6														
20	48.9	56.7	64.1	70.4	72.8														
25	49.6	59.1	69.6	80.1	86.4														
30	50.4	60.8	73.7	89.1	101														
35	52.0	62.9	77.0	97.1	118														
40	53.8	65.1	80.3	104	135														
45	55.5	67.3	83.7	111	153														
50	56.8	69.3	86.9	117	171														
55	58.0	71.1	89.9	123	189														
60	58.7	72.5	92.6	127	206														
65	59.1	73.4	94.8	132	221														
70	59.2	73.8	96.5	135	233														
75	59.0	74.2	97.6	138	242														
80	59.0	74.2	98.3	139	249														
85	59.1	74.5	99.1	140	253														
90	57.9	73.7	99.2	141	255														
95	58.3	74.1	99.2	140	254														
100	58.6	74.0	98.7	139	248														
105	58.7	73.8	98.0	137	239														
110	58.7	73.2	96.7	134	229														
115	58.2	72.4	95.0	130	216														
120	57.7	71.1	92.7	126	201														
125	54.8	67.2	88.9	121	185														
130	52.8	65.1	85.6	115	168														
135	51.7	63.6	81.4	109	149														
140	50.5	60.7	77.1	101	132														
145	48.2	56.7	73.2	93.0	114														
150	45.1	53.3	69.0	83.9	98.0														
155	40.7	49.4	62.4	70.9	82.0														
160	32.5	39.9	53.3	62.5	65.7														
165	20.6	37.7	47.0	51.9	53.4														
170	19.2	28.3	39.5	42.0	43.5														
175	0.41	1.39	3.54	7.09	14.9														
180	0.14	0.10	0.10	0.09	0.08														

C Range: 0 - 360DEG
 C Interval: 15.0DEG
 Test Speed: HIGH
 Temperature: 24.8DEG
 Operators: Alan Wang
 Test Date: 18 December 2023

γ Range: 0 - 180DEG
 γ Interval: 1.0DEG
 Test System: EVERFINE GO-R5000_V2 SYSTEM V2.00.416
 Humidity: 41.6%
 Test Distance: 2.500m [K=1.0423]
 Remarks: