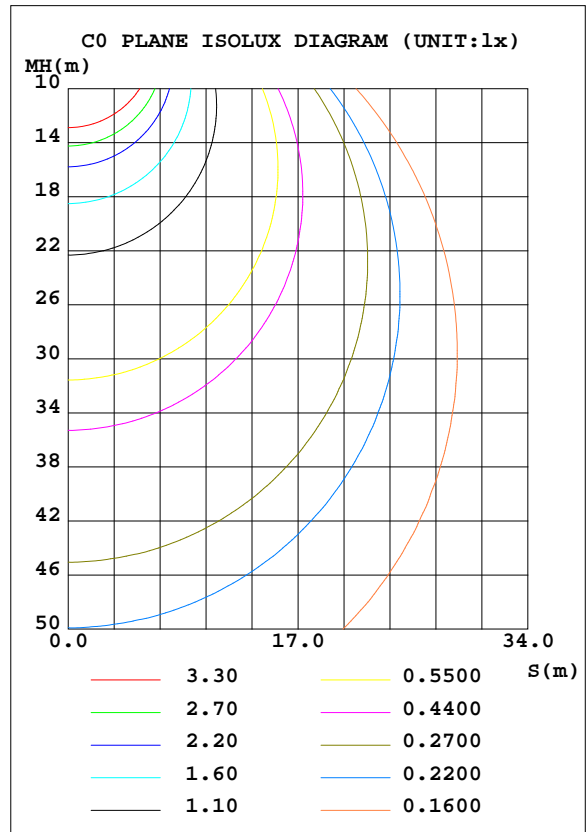
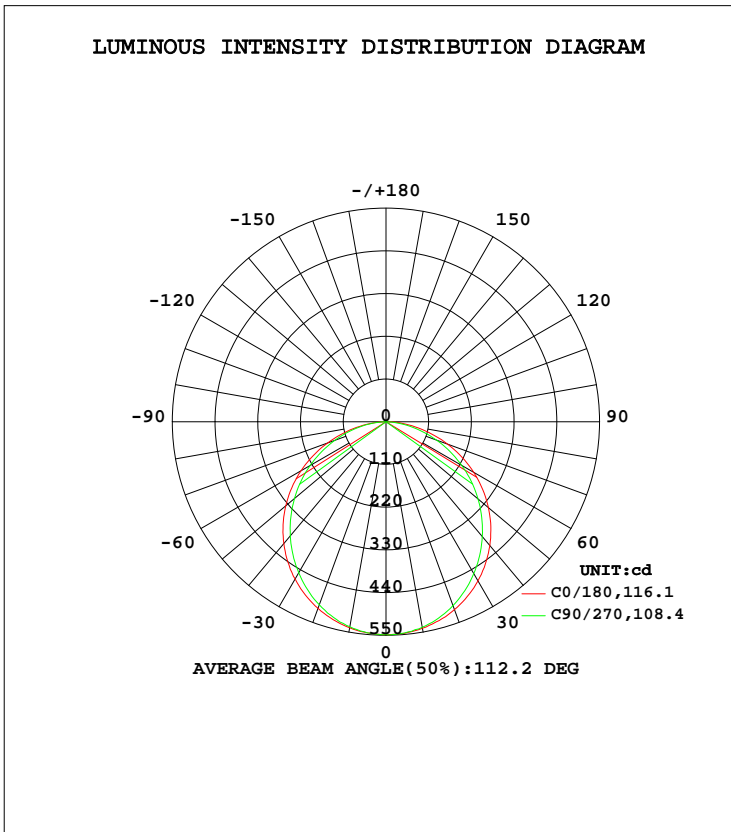


LUMINAIRE PHOTOMETRIC TEST REPORT

Test:U:120.07V I:0.1816A P:20.410W PF:0.9360 Freq:60.00Hz Lamp Flux:1567.92x1 lm		
NAME: ASD-UCS-40D20CC	TYPE: N/A	WEIGHT: N/A
SPEC.: N/A	DIM.: N/A	SERIAL No.: N/A
MFR.: ASD Lighting Corp	SUR.: N/A	Shielding Angle: N/A

DATA OF LAMP		PHOTOMETRIC DATA Eff: 76.82 lm/W			
MODEL	ASD-UCS-40D20CC	I _{max} (cd)	549.0	S/MH(C0/180)	1.28
NOMINAL POWER(W)	20	LOR(%)	100.0	S/MH(C90/270)	1.23
RATED VOLTAGE(V)	120	TOTAL FLUX(lm)	1567.9	η UP, DN(C0-180)	0.1,49.8
NOMINAL FLUX(lm)	1567.92	CIE CLASS	DIRECT	η UP, DN(C180-360)	0.0,50.1
LAMPS INSIDE	1	η up(%)	0.1	CIBSE SHR NOM	1.25
TEST VOLTAGE(V)	120	η down(%)	99.9	CIBSE SHR MAX	1.35



C Range: 0 - 360DEG
 C Interval: 22.5DEG
 Test Speed: HIGH
 Temperature:24.9DEG
 Operators:Water
 Test Date:2023-09-08

γ Range: 0 - 180DEG
 γ Interval: 1.0DEG
 Test System:EVERFINE GO-R5000_V2 SYSTEM V2.00.446
 Humidity:50%
 Test Distance:2.513m [K=1.0000]
 Remarks: Model No: UCL-31B-40G

ZONAL FLUX DIAGRAM

ZONAL FLUX DIAGRAM:

γ	C0	C45	C90	C135	C180	C225	C270	C315	γ	Φ zone	Φ total	%lum, lamp
10	538.7	537.1	536.0	537.9	539.7	538.2	537.2	538.5	0- 10	51.85	51.85	3.31,3.31
20	511.5	506.5	501.9	507.3	515.0	508.9	503.9	508.3	10- 20	148.3	200.1	12.8,12.8
30	468.0	458.3	449.5	459.6	473.6	462.1	451.8	460.7	20- 30	224.1	424.2	27.1,27.1
40	409.1	395.4	383.5	398.1	416.1	400.5	385.6	397.6	30- 40	269.6	693.8	44.2,44.2
50	337.0	321.0	307.8	324.2	344.4	325.9	309.7	323.1	40- 50	279.5	973.3	62.1,62.1
60	253.0	238.4	225.7	240.9	261.2	242.0	225.8	239.5	50- 60	253.1	1226	78.2,78.2
70	160.2	150.4	140.7	152.5	169.2	152.5	138.2	150.5	60- 70	194.4	1421	90.6,90.6
80	68.87	64.81	59.87	67.07	76.54	65.36	56.39	63.17	70- 80	113.5	1534	97.9,97.9
90	3.260	2.656	0.0853	3.107	2.636	0.0464	0.0328	0.0366	80- 90	31.86	1566	99.9,99.9
100	0.1367	0.1437	0.1439	0.1476	0.0616	0.0636	0.0608	0.0589	90-100	0.1611	1566	99.9,99.9
110	0.1665	0.1694	0.1755	0.1729	0.0976	0.1016	0.0960	0.0934	100-110	0.1232	1566	99.9,99.9
120	0.2222	0.2285	0.2356	0.2332	0.1465	0.1447	0.1376	0.1363	110-120	0.1563	1567	99.9,99.9
130	0.3215	0.3306	0.3497	0.3377	0.2085	0.2048	0.1923	0.1921	120-130	0.2005	1567	99.9,99.9
140	0.4968	0.5442	0.5580	0.5344	0.2645	0.2713	0.2651	0.2637	130-140	0.2516	1567	99.9,99.9
150	0.6852	0.7921	0.8306	0.7637	0.3253	0.3452	0.3535	0.3489	140-150	0.3022	1567	100,100
160	0.8821	0.9364	0.9636	0.9215	0.4546	0.4428	0.4401	0.4474	150-160	0.2886	1568	100,100
170	0.8480	0.8785	0.8779	0.8644	0.5604	0.5277	0.4925	0.5192	160-170	0.1984	1568	100,100
180	0.7351	0.6964	0.6727	0.7165	0.7362	0.7169	0.6720	0.6831	170-180	0.0665	1568	100,100
DEG	LUMINOUS INTENSITY:cd									UNIT:lm		

Conical surface Flux(90deg): 834.63 lm

%lum = 53.2%
 %lamp = 53.2%

Conical surface Flux(120deg): 1226.5 lm

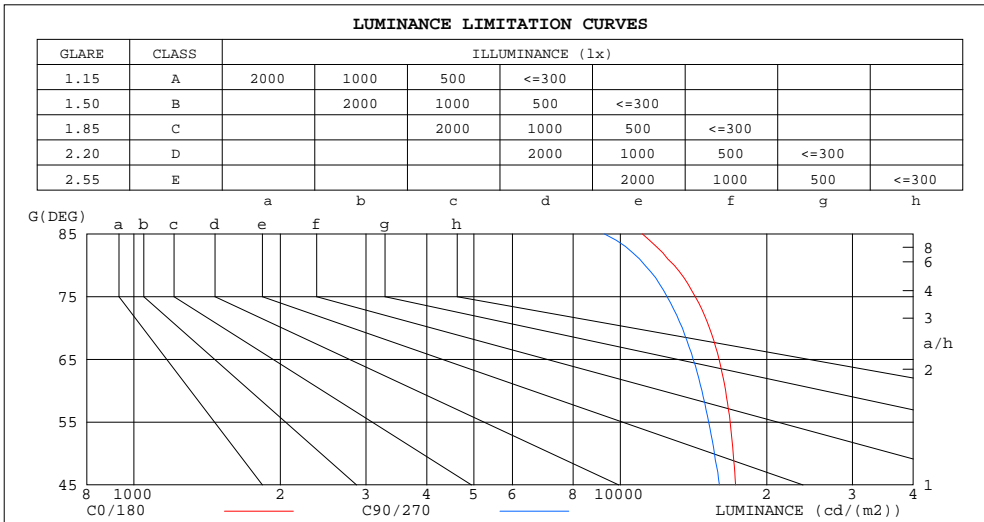
%lum = 78.2%
 %lamp = 78.2%

C Range: 0 - 360DEG
 C Interval: 22.5DEG
 Test Speed: HIGH
 Temperature:24.9DEG
 Operators:Water
 Test Date:2023-09-08

γ Range: 0 - 180DEG
 γ Interval: 1.0DEG
 Test System:EVERFINE GO-R5000_V2 SYSTEM V2.00.446
 Humidity:50%
 Test Distance:2.513m [K=1.0000]
 Remarks: Model No: UCL-31B-40G

LUMINANCE LIMITATION CURVES

Test:U:120.07V I:0.1816A P:20.410W PF:0.9360 Freq:60.00Hz Lamp Flux:1567.92x1 lm		
NAME: ASD-UCS-40D20CC	TYPE: N/A	WEIGHT: N/A
SPEC.: N/A	DIM.: N/A	SERIAL No.: N/A
MFR.: ASD Lighting Corp	SUR.: N/A	Shielding Angle: N/A



LUMINANCE cd/(m2)		
G(DEG)	C0/180	C90/270
85	11104	9275
80	12913	11242
75	14262	12473
70	15254	13416
65	15956	14115
60	16471	14719
55	16812	15197
50	17067	15613
45	17259	15982

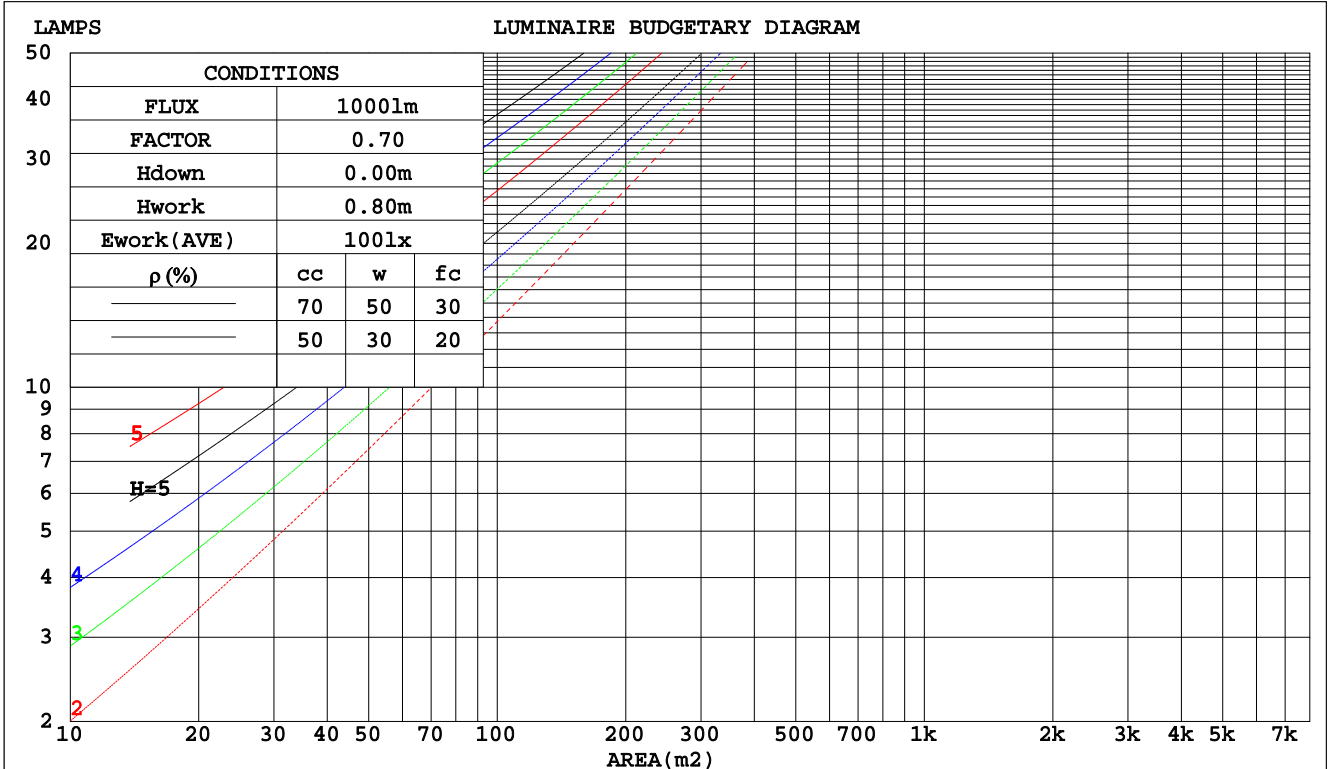
C Range: 0 - 360DEG
 C Interval: 22.5DEG
 Test Speed: HIGH
 Temperature: 24.9DEG
 Operators: Water
 Test Date: 2023-09-08

γ Range: 0 - 180DEG
 γ Interval: 1.0DEG
 Test System: EVERFINE GO-R5000_V2 SYSTEM V2.00.446
 Humidity: 50%
 Test Distance: 2.513m [K=1.0000]
 Remarks: Model No: UCL-31B-40G

CU AND LUMINAIRE BUDGETARY ESTIMATE DIAGRAM

Test:U:120.07V I:0.1816A P:20.410W PF:0.9360 Freq:60.00Hz Lamp Flux:1567.92x1 lm		
NAME: ASD-UCS-40D20CC	TYPE: N/A	WEIGHT: N/A
SPEC.: N/A	DIM.: N/A	SERIAL No.: N/A
MFR.: ASD Lighting Corp	SUR.: N/A	Shielding Angle: N/A

pcc	80%			70%			50%			30%			10%			0
	50%	30%	10%	50%	30%	10%	50%	30%	10%	50%	30%	10%	50%	30%	10%	0
pw																0
pfc	20%			20%			20%			20%			20%			0
RCR	RCR:Room Cavity Ratio Coefficients of Utilization(CU)															
0.0	1.19	1.19	1.19	1.16	1.16	1.16	1.11	1.11	1.11	1.06	1.06	1.06	1.02	1.02	1.02	.00
1.0	1.04	.99	.95	1.01	.97	.94	.97	.94	.91	.93	.91	.88	.90	.87	.85	.83
2.0	.90	.83	.77	.88	.82	.77	.85	.79	.75	.81	.77	.73	.78	.75	.71	.69
3.0	.79	.71	.64	.78	.70	.64	.75	.68	.63	.72	.66	.61	.69	.64	.60	.58
4.0	.70	.61	.54	.69	.60	.54	.66	.59	.53	.64	.58	.52	.62	.56	.52	.50
5.0	.63	.53	.47	.61	.53	.46	.59	.52	.46	.57	.51	.45	.55	.50	.45	.43
6.0	.56	.47	.41	.55	.47	.41	.53	.46	.40	.52	.45	.40	.50	.44	.39	.37
7.0	.51	.42	.36	.50	.42	.36	.49	.41	.36	.47	.40	.35	.46	.40	.35	.33
8.0	.47	.38	.32	.46	.38	.32	.44	.37	.32	.43	.36	.32	.42	.36	.31	.29
9.0	.43	.34	.29	.42	.34	.29	.41	.34	.29	.40	.33	.28	.39	.33	.28	.26
10.0	.39	.31	.26	.39	.31	.26	.38	.31	.26	.37	.30	.26	.36	.30	.26	.24



C Range: 0 - 360DEG
 C Interval: 22.5DEG
 Test Speed: HIGH
 Temperature: 24.9DEG
 Operators: Water
 Test Date: 2023-09-08

γ Range: 0 - 180DEG
 γ Interval: 1.0DEG
 Test System: EVERFINE GO-R5000_V2 SYSTEM V2.00.446
 Humidity: 50%
 Test Distance: 2.513m [K=1.0000]
 Remarks: Model No: UCL-31B-40G

WEC AND CCEC

Test:U:120.07V I:0.1816A P:20.410W PF:0.9360 Freq:60.00Hz		
Lamp Flux:1567.92x1 lm		
NAME: ASD-UCS-40D20CC	TYPE: N/A	WEIGHT: N/A
SPEC.: N/A	DIM.: N/A	SERIAL No.: N/A
MFR.: ASD Lighting Corp	SUR.: N/A	Shielding Angle: N/A

ρcc	80%			70%			50%			30%			10%			0
ρw	50%	30%	10%	50%	30%	10%	50%	30%	10%	50%	30%	10%	50%	30%	10%	0
ρfc	20%			20%			20%			20%			20%			0
RCR	RCR:Room Cavity Ratio						Wall Exitance Coefficients(WEC)									
0.0																
1.0	.313	.178	.056	.306	.174	.055	.292	.168	.054	.280	.161	.052	.269	.156	.050	
2.0	.294	.161	.049	.287	.158	.049	.276	.153	.048	.265	.149	.046	.255	.144	.045	
3.0	.271	.144	.043	.266	.142	.043	.255	.138	.042	.246	.135	.041	.237	.131	.041	
4.0	.250	.130	.038	.245	.128	.038	.236	.125	.037	.227	.122	.037	.219	.119	.036	
5.0	.231	.118	.034	.227	.116	.034	.219	.114	.034	.211	.111	.033	.204	.109	.033	
6.0	.214	.107	.031	.210	.106	.031	.203	.104	.030	.196	.102	.030	.190	.100	.030	
7.0	.199	.099	.028	.196	.098	.028	.189	.096	.028	.183	.094	.027	.177	.092	.027	
8.0	.186	.091	.026	.183	.090	.025	.177	.089	.025	.172	.087	.025	.167	.085	.025	
9.0	.174	.084	.024	.172	.084	.023	.166	.082	.023	.161	.081	.023	.157	.080	.023	
10.0	.164	.079	.022	.161	.078	.022	.157	.077	.022	.152	.076	.021	.148	.074	.021	

ρcc	80%			70%			50%			30%			10%			0
ρw	50%	30%	10%	50%	30%	10%	50%	30%	10%	50%	30%	10%	50%	30%	10%	0
ρfc	20%			20%			20%			20%			20%			0
RCR	RCR:Room Cavity Ratio						Ceiling Cavity Exitance Coefficients(CCEC)									
0.0	.191	.191	.191	.164	.164	.164	.112	.112	.112	.064	.064	.064	.020	.020	.020	
1.0	.181	.157	.135	.155	.135	.116	.106	.093	.080	.061	.054	.047	.020	.017	.015	
2.0	.173	.133	.099	.148	.114	.085	.102	.079	.059	.059	.046	.035	.019	.015	.011	
3.0	.166	.115	.075	.142	.099	.065	.097	.069	.046	.056	.040	.027	.018	.013	.009	
4.0	.158	.102	.059	.136	.088	.051	.093	.061	.036	.054	.036	.021	.017	.012	.007	
5.0	.151	.091	.048	.129	.079	.042	.089	.055	.029	.052	.032	.017	.017	.011	.006	
6.0	.143	.083	.040	.123	.072	.035	.085	.050	.025	.049	.030	.015	.016	.010	.005	
7.0	.136	.076	.034	.117	.066	.030	.081	.046	.021	.047	.027	.013	.015	.009	.004	
8.0	.130	.070	.030	.112	.061	.026	.077	.043	.018	.045	.025	.011	.015	.008	.004	
9.0	.124	.065	.026	.107	.057	.023	.074	.040	.016	.043	.024	.010	.014	.008	.003	
10.0	.118	.061	.023	.102	.053	.020	.071	.037	.014	.041	.022	.009	.013	.007	.003	

C Range: 0 - 360DEG
 C Interval: 22.5DEG
 Test Speed: HIGH
 Temperature:24.9DEG
 Operators:Water
 Test Date:2023-09-08

γ Range: 0 - 180DEG
 γ Interval: 1.0DEG
 Test System:EVERFINE GO-R5000_V2 SYSTEM V2.00.446
 Humidity:50%
 Test Distance:2.513m [K=1.0000]
 Remarks: Model No: UCL-31B-40G

UGR(Unified Glare Rating) Table

Test:U:120.07V I:0.1816A P:20.410W PF:0.9360 Freq:60.00Hz										
Lamp Flux:1567.92x1 lm										
NAME: ASD-UCS-40D20CC					TYPE: N/A			WEIGHT: N/A		
SPEC.: N/A					DIM.: N/A			SERIAL No.: N/A		
MFR.: ASD Lighting Corp					SUR.: N/A			Shielding Angle: N/A		
ceiling/cavity	0.7	0.7	0.5	0.5	0.3	0.7	0.7	0.5	0.5	0.3
walls	0.5	0.3	0.5	0.3	0.3	0.5	0.3	0.5	0.3	0.3
working plane	0.2	0.2	0.2	0.2	0.2	0.2	0.2	0.2	0.2	0.2
Room dimensions	Viewed crosswise					Viewed endwise				
x = 2H y = 2H	21.2	22.7	21.4	22.9	23.1	20.7	22.2	20.9	22.4	22.6
3H	22.7	24.2	23.0	24.4	24.6	22.1	23.6	22.4	23.8	24.0
4H	23.4	24.7	23.7	25.0	25.2	22.7	24.1	23.1	24.3	24.6
6H	23.9	25.1	24.2	25.4	25.7	23.2	24.4	23.5	24.7	25.0
8H	24.0	25.2	24.3	25.5	25.8	23.3	24.5	23.7	24.8	25.1
12H	24.1	25.3	24.4	25.6	25.9	23.4	24.6	23.7	24.9	25.2
4H 2H	21.7	23.1	22.0	23.3	23.6	21.3	22.7	21.6	22.9	23.2
3H	23.5	24.7	23.9	25.0	25.3	23.0	24.2	23.4	24.5	24.8
4H	24.3	25.4	24.7	25.7	26.0	23.7	24.8	24.1	25.1	25.5
6H	24.9	25.8	25.3	26.2	26.6	24.3	25.2	24.7	25.6	25.9
8H	25.1	26.0	25.5	26.3	26.7	24.5	25.3	24.9	25.7	26.1
12H	25.2	26.0	25.7	26.4	26.8	24.6	25.4	25.0	25.8	26.2
8H 4H	24.5	25.4	24.9	25.8	26.2	24.0	24.9	24.4	25.3	25.7
6H	25.3	26.0	25.7	26.4	26.9	24.7	25.5	25.2	25.9	26.3
8H	25.6	26.2	26.0	26.7	27.1	25.0	25.7	25.5	26.1	26.5
12H	25.8	26.4	26.3	26.8	27.3	25.2	25.8	25.7	26.2	26.7
12H 4H	24.5	25.4	25.0	25.7	26.1	24.0	24.9	24.5	25.3	25.7
6H	25.3	26.0	25.8	26.4	26.9	24.8	25.5	25.3	25.9	26.3
8H	25.7	26.2	26.1	26.7	27.2	25.1	25.7	25.6	26.1	26.6
Variations with the observer position at spacings(CIE Pub.117):										
S = 1.0H	+ 0.1 / - 0.2					+ 0.2 / - 0.2				
1.5H	+ 0.2 / - 0.3					+ 0.2 / - 0.3				
2.0H	+ 0.2 / - 0.3					+ 0.1 / - 0.3				

CIE Pub.117, 1568 lm Total Lamp Luminous Flux Correct (8log(F/F0) = 1.6)
 Area: 0.03069 m2

C Range: 0 - 360DEG
 C Interval: 22.5DEG
 Test Speed: HIGH
 Temperature:24.9DEG
 Operators:Water
 Test Date:2023-09-08

γ Range: 0 - 180DEG
 γ Interval: 1.0DEG
 Test System:EVERFINE GO-R5000_V2 SYSTEM V2.00.446
 Humidity:50%
 Test Distance:2.513m [K=1.0000]
 Remarks: Model No: UCL-31B-40G

UTILIZATION FACTORS TABLE

Test:U:120.07V I:0.1816A P:20.410W PF:0.9360 Freq:60.00Hz Lamp Flux:1567.92x1 lm		
NAME: ASD-UCS-40D20CC	TYPE: N/A	WEIGHT: N/A
SPEC.: N/A	DIM.: N/A	SERIAL No.: N/A
MFR.: ASD Lighting Corp	SUR.: N/A	Shielding Angle: N/A

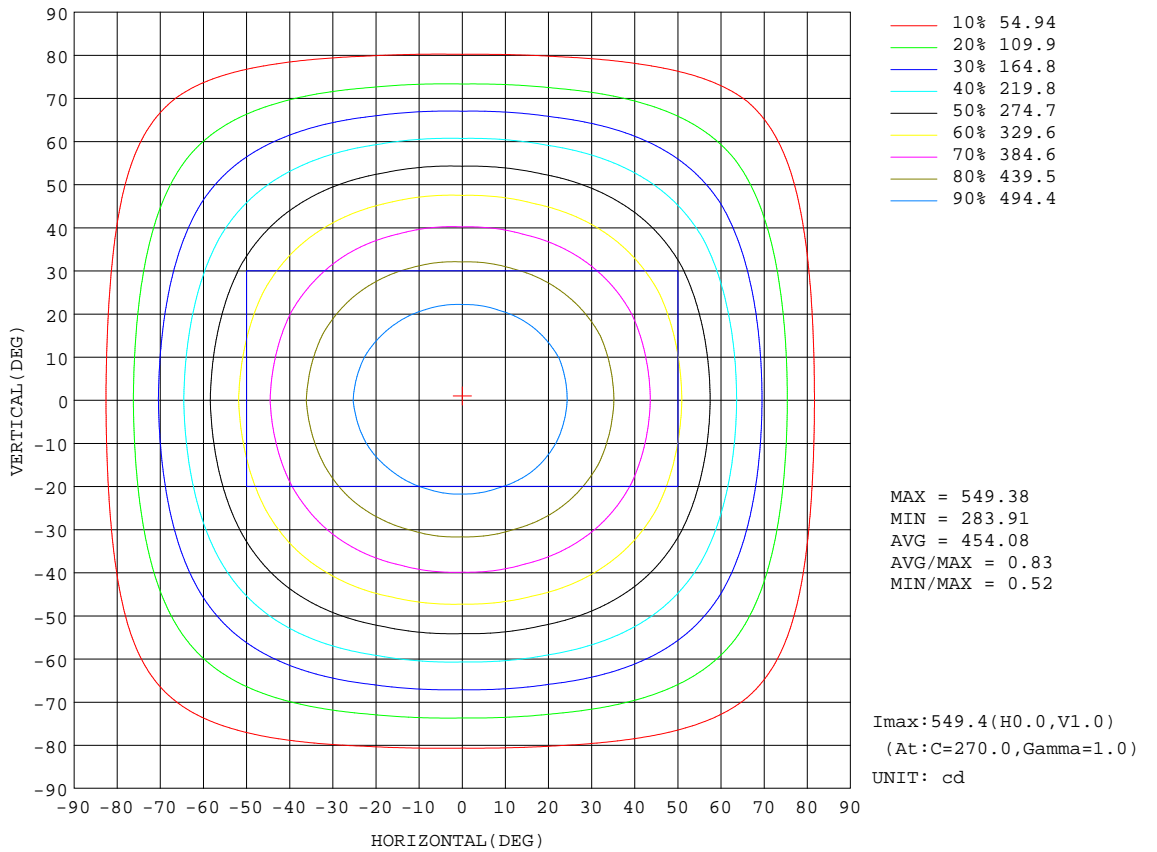
REFLECTANCE										
Ceiling	0.8	0.8	0.8	0.7	0.7	0.7	0.5	0.5	0.5	0
Walls	0.7	0.5	0.3	0.7	0.5	0.3	0.7	0.5	0.3	0
Working plane	0.2	0.2	0.2	0.2	0.2	0.2	0.2	0.2	0.2	0
ROOM INDEX	UTILIZATION FACTORS(PERCENT) $k(RI) \times RCR = 5$									
k = 0.60	57	46	39	57	45	39	55	45	38	32
0.80	67	56	48	66	55	48	65	54	48	41
1.00	76	65	57	75	64	57	72	65	56	49
1.25	83	72	65	81	72	65	79	70	64	56
1.50	88	78	71	86	77	70	83	75	69	62
2.00	95	86	80	93	85	79	89	83	77	69
2.50	99	91	85	97	89	84	93	87	82	74
3.00	102	95	90	100	94	88	96	91	86	78
4.00	106	100	96	104	99	94	99	95	92	83
5.00	109	104	100	106	102	98	102	98	95	86
ROOM INDEX	UF(total)									Direct
According to DIN EN 13032-2 2004			Suspended				SHRNOM = 1.25			

C Range: 0 - 360DEG
 C Interval: 22.5DEG
 Test Speed: HIGH
 Temperature:24.9DEG
 Operators:Water
 Test Date:2023-09-08

γ Range: 0 - 180DEG
 γ Interval: 1.0DEG
 Test System:EVERFINE GO-R5000_V2 SYSTEM V2.00.446
 Humidity:50%
 Test Distance:2.513m [K=1.0000]
 Remarks: Model No: UCL-31B-40G

ISOCANDELA DIAGRAM

Test:U:120.07V I:0.1816A P:20.410W PF:0.9360 Freq:60.00Hz Lamp Flux:1567.92x1 lm		
NAME: ASD-UCS-40D20CC	TYPE: N/A	WEIGHT: N/A
SPEC.: N/A	DIM.: N/A	SERIAL No.: N/A
MFR.: ASD Lighting Corp	SUR.: N/A	Shielding Angle: N/A



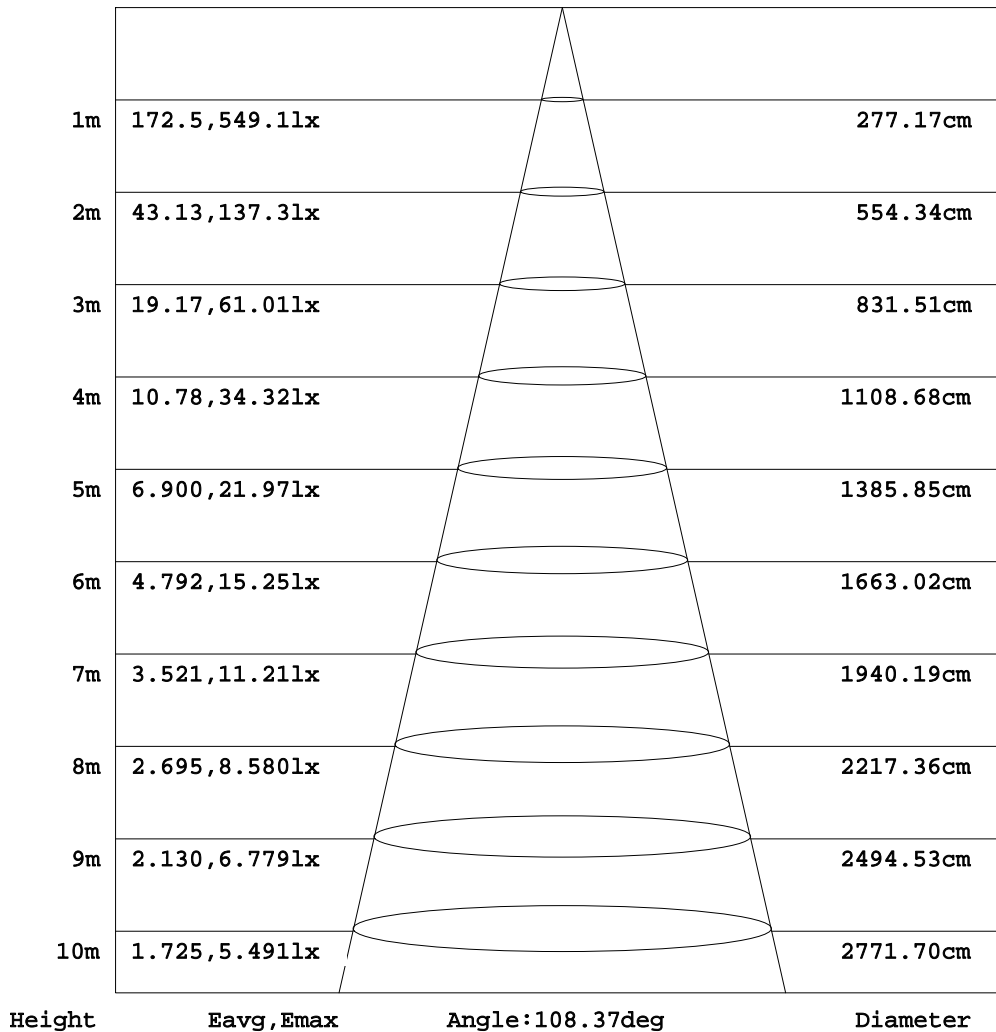
C Range: 0 - 360DEG
 C Interval: 22.5DEG
 Test Speed: HIGH
 Temperature: 24.9DEG
 Operators: Water
 Test Date: 2023-09-08

γ Range: 0 - 180DEG
 γ Interval: 1.0DEG
 Test System: EVERFINE GO-R5000_V2 SYSTEM V2.00.446
 Humidity: 50%
 Test Distance: 2.513m [K=1.0000]
 Remarks: Model No: UCL-31B-40G

AAI Figure

Test:U:120.07V I:0.1816A P:20.410W PF:0.9360 Freq:60.00Hz Lamp Flux:1567.92x1 lm		
NAME: ASD-UCS-40D20CC	TYPE: N/A	WEIGHT: N/A
SPEC.: N/A	DIM.: N/A	SERIAL No.: N/A
MFR.: ASD Lighting Corp	SUR.: N/A	Shielding Angle: N/A

Flux out:1105 lm



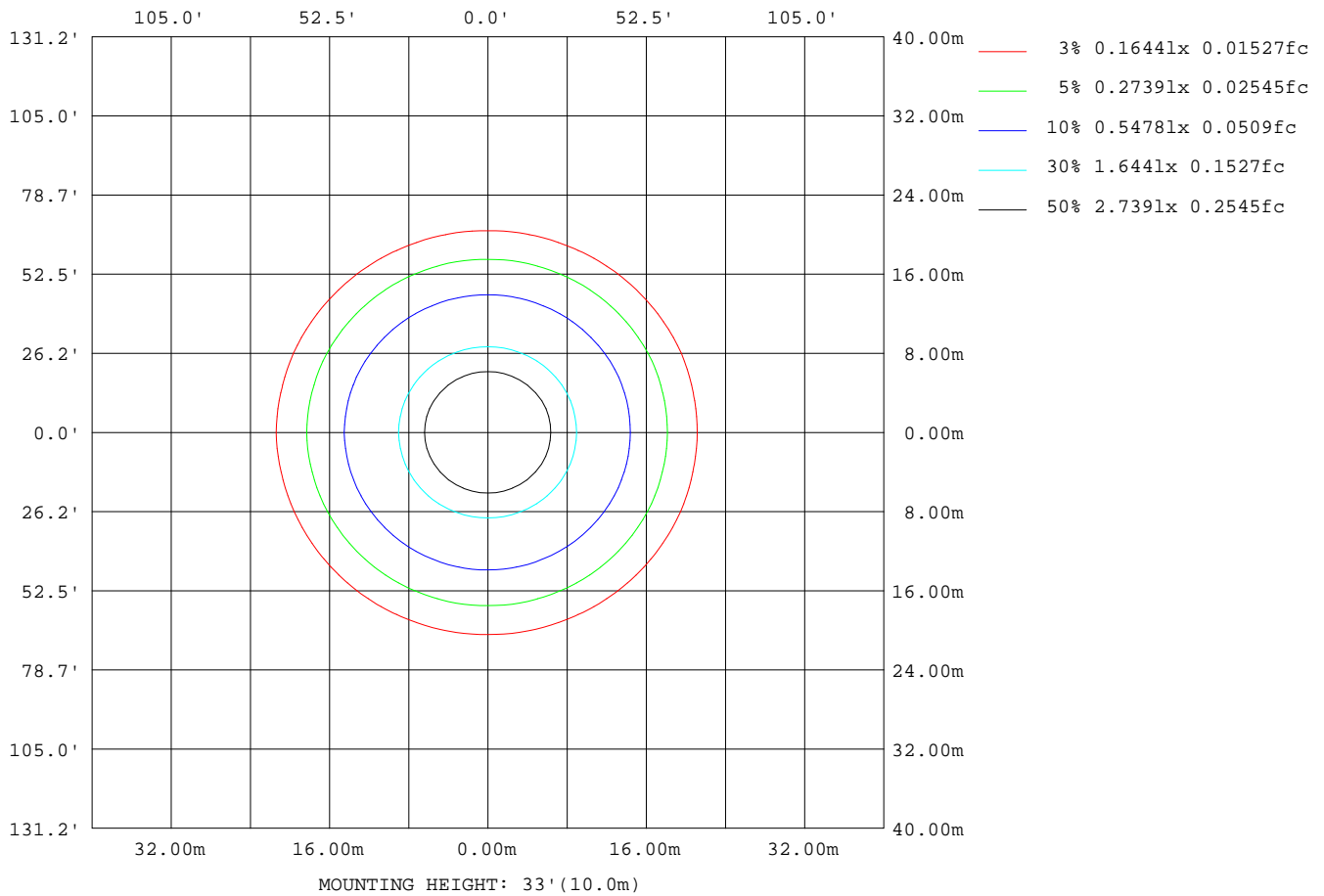
Note: The Curves indicate the illuminated area and the average illumination when the luminaire is at different distance.

C Range: 0 - 360DEG
 C Interval: 22.5DEG
 Test Speed: HIGH
 Temperature: 24.9DEG
 Operators: Water
 Test Date: 2023-09-08

γ Range: 0 - 180DEG
 γ Interval: 1.0DEG
 Test System: EVERFINE GO-R5000_V2 SYSTEM V2.00.446
 Humidity: 50%
 Test Distance: 2.513m [K=1.0000]
 Remarks: Model No: UCL-31B-40G

ISOLUX DIAGRAM

Test:U:120.07V I:0.1816A P:20.410W PF:0.9360 Freq:60.00Hz Lamp Flux:1567.92x1 lm		
NAME: ASD-UCS-40D20CC	TYPE: N/A	WEIGHT: N/A
SPEC.: N/A	DIM.: N/A	SERIAL No.: N/A
MFR.: ASD Lighting Corp	SUR.: N/A	Shielding Angle: N/A



C Range: 0 - 360DEG
 C Interval: 22.5DEG
 Test Speed: HIGH
 Temperature: 24.9DEG
 Operators: Water
 Test Date: 2023-09-08

γ Range: 0 - 180DEG
 γ Interval: 1.0DEG
 Test System: EVERFINE GO-R5000_V2 SYSTEM V2.00.446
 Humidity: 50%
 Test Distance: 2.513m [K=1.0000]
 Remarks: Model No: UCL-31B-40G

LED Avg.L Report

Test:U:120.07V I:0.1816A P:20.410W PF:0.9360 Freq:60.00Hz Lamp Flux:1567.92x1 lm		
NAME: ASD-UCS-40D20CC	TYPE: N/A	WEIGHT: N/A
SPEC.: N/A	DIM.: N/A	SERIAL No.: N/A
MFR.: ASD Lighting Corp	SUR.: N/A	Shielding Angle: N/A

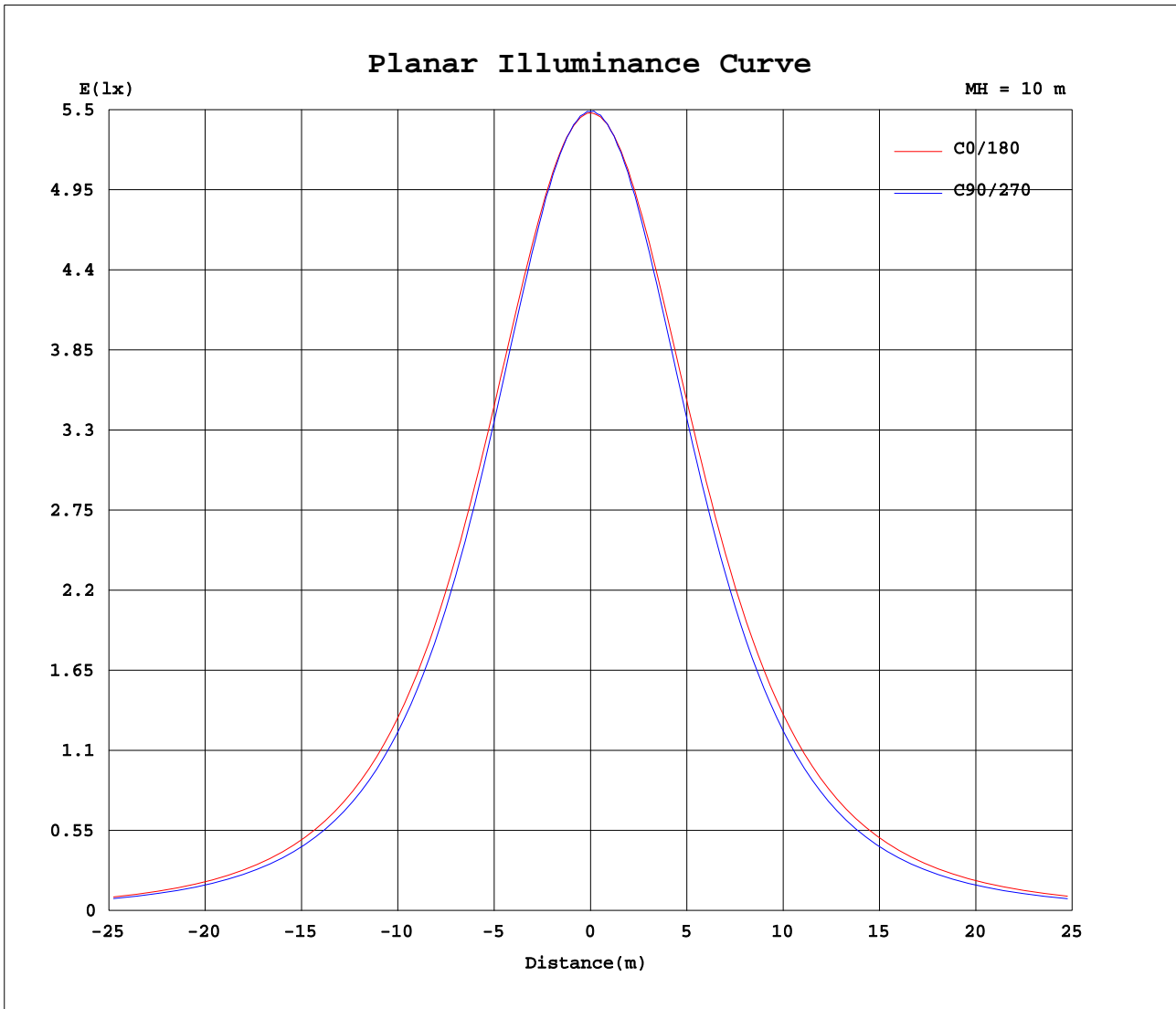
AvgL	cd/m2
L_0~180(65)av	16307
L_0~180(75)av	14776
L_0~180(85)av	12390
L_90~270(65)av	14073
L_90~270(75)av	12266
L_90~270(85)av	8549
L_45(65)av	15110
L_45(75)av	13438
L_45(85)av	10250

Standard: GB/T 29293-2012

C Range: 0 - 360DEG
 C Interval: 22.5DEG
 Test Speed: HIGH
 Temperature:24.9DEG
 Operators:Water
 Test Date:2023-09-08

γ Range: 0 - 180DEG
 γ Interval: 1.0DEG
 Test System:EVERFINE GO-R5000_V2 SYSTEM V2.00.446
 Humidity:50%
 Test Distance:2.513m [K=1.0000]
 Remarks: Model No: UCL-31B-40G

Planar Illuminance Curve



C Range: 0 - 360DEG
 C Interval: 22.5DEG
 Test Speed: HIGH
 Temperature: 24.9DEG
 Operators: Water
 Test Date: 2023-09-08

γ Range: 0 - 180DEG
 γ Interval: 1.0DEG
 Test System: EVERFINE GO-R5000_V2 SYSTEM V2.00.446
 Humidity: 50%
 Test Distance: 2.513m [K=1.0000]
 Remarks: Model No: UCL-31B-40G

LUMINOUS DISTRIBUTION INTENSITY DATA

Test:U:120.07V I:0.1816A P:20.410W PF:0.9360 Freq:60.00Hz Lamp Flux:1567.92x1 lm		
NAME: ASD-UCS-40D20CC	TYPE: N/A	WEIGHT: N/A
SPEC.: N/A	DIM.: N/A	SERIAL No.: N/A
MFR.: ASD Lighting Corp	SUR.: N/A	Shielding Angle: N/A

Table--1

UNIT: cd

C(DEG) γ (DEG)	0	22.5	45	67.5	90	112.5	135	157.5	180	202.5	225	247.5	270	292.5	315	337.5			
0	548	548	548	548	548	548	548	548	548	548	548	548	548	548	548	548			
5	546	546	546	546	546	546	545	545	547	546	546	546	546	546	546	546			
10	539	538	537	536	536	537	538	539	540	540	538	537	537	538	538	539			
15	527	527	524	523	522	523	525	527	530	528	526	524	524	524	527	528			
20	512	510	506	503	502	503	507	511	515	513	509	506	504	505	508	512			
25	492	490	485	480	478	480	485	491	496	493	488	483	480	482	486	492			
30	468	465	458	452	449	453	460	467	474	470	462	455	452	455	461	467			
35	441	437	429	420	418	422	430	439	446	442	433	425	421	423	431	439			
40	409	405	395	387	384	388	398	409	416	411	400	391	386	389	398	407			
45	375	370	359	350	347	351	362	373	382	376	364	354	349	352	362	373			
50	337	332	321	311	308	313	324	336	344	339	326	315	310	313	323	334			
55	296	291	280	270	267	272	283	295	304	298	285	273	268	272	282	294			
60	253	249	238	229	226	230	241	252	261	255	242	231	226	229	240	251			
65	207	204	195	186	183	187	197	207	216	210	197	187	182	185	195	206			
70	160	158	150	143	141	144	152	161	169	164	152	143	138	141	150	160			
75	113	112	106	101	99.0	102	109	115	121	116	107	99.3	95.8	98.1	105	113			
80	68.9	68.3	64.8	61.4	59.9	62.3	67.1	71.6	76.5	72.6	65.4	59.2	56.4	58.1	63.2	69.3			
85	29.7	29.5	27.5	25.4	24.8	26.4	29.4	32.3	36.6	33.2	27.1	22.9	20.9	22.0	25.6	30.5			
90	3.26	3.20	2.66	0.09	0.09	2.67	3.11	2.51	2.64	0.61	0.05	0.04	0.03	0.03	0.04	0.09			
95	0.12	0.13	0.14	0.11	0.11	0.11	0.14	0.14	0.05	0.05	0.05	0.05	0.04	0.04	0.04	0.04			
100	0.14	0.14	0.14	0.14	0.14	0.15	0.15	0.14	0.06	0.06	0.06	0.06	0.06	0.06	0.06	0.06			
105	0.15	0.15	0.15	0.15	0.16	0.16	0.16	0.15	0.08	0.08	0.08	0.08	0.08	0.08	0.08	0.08			
110	0.17	0.17	0.17	0.17	0.18	0.17	0.17	0.17	0.10	0.10	0.10	0.10	0.10	0.10	0.09	0.10			
115	0.19	0.20	0.20	0.19	0.20	0.20	0.20	0.19	0.12	0.12	0.12	0.12	0.12	0.11	0.11	0.12			
120	0.22	0.23	0.23	0.23	0.24	0.23	0.23	0.23	0.15	0.15	0.14	0.14	0.14	0.13	0.14	0.14			
125	0.27	0.28	0.27	0.28	0.28	0.28	0.28	0.27	0.18	0.18	0.18	0.17	0.16	0.16	0.17	0.17			
130	0.32	0.33	0.33	0.34	0.35	0.34	0.34	0.32	0.21	0.21	0.20	0.20	0.19	0.20	0.19	0.20			
135	0.39	0.40	0.41	0.42	0.43	0.43	0.41	0.38	0.24	0.24	0.23	0.24	0.23	0.23	0.23	0.24			
140	0.50	0.52	0.54	0.55	0.56	0.56	0.53	0.49	0.26	0.26	0.27	0.27	0.27	0.26	0.26	0.27			
145	0.61	0.63	0.69	0.71	0.72	0.70	0.67	0.60	0.30	0.30	0.31	0.32	0.32	0.32	0.31	0.31			
150	0.69	0.73	0.79	0.83	0.83	0.83	0.76	0.70	0.33	0.32	0.35	0.35	0.35	0.35	0.35	0.36			
155	0.80	0.85	0.89	0.92	0.94	0.91	0.86	0.81	0.37	0.36	0.39	0.39	0.38	0.40	0.40	0.42			
160	0.88	0.91	0.94	0.99	0.96	0.97	0.92	0.87	0.45	0.45	0.44	0.44	0.44	0.45	0.45	0.48			
165	0.88	0.91	0.93	0.95	0.97	0.94	0.92	0.88	0.51	0.50	0.48	0.47	0.46	0.48	0.48	0.51			
170	0.85	0.86	0.88	0.88	0.88	0.87	0.86	0.85	0.56	0.56	0.53	0.50	0.49	0.49	0.52	0.55			
175	0.82	0.82	0.82	0.81	0.79	0.79	0.81	0.82	0.63	0.63	0.61	0.58	0.56	0.54	0.58	0.62			
180	0.74	0.72	0.70	0.67	0.67	0.68	0.72	0.74	0.74	0.74	0.72	0.70	0.67	0.67	0.68	0.72			

C Range: 0 - 360DEG
 C Interval: 22.5DEG
 Test Speed: HIGH
 Temperature:24.9DEG
 Operators:Water
 Test Date:2023-09-08

γ Range: 0 - 180DEG
 γ Interval: 1.0DEG
 Test System:EVERFINE GO-R5000_V2 SYSTEM V2.00.446
 Humidity:50%
 Test Distance:2.513m [K=1.0000]
 Remarks: Model No: UCL-31B-40G