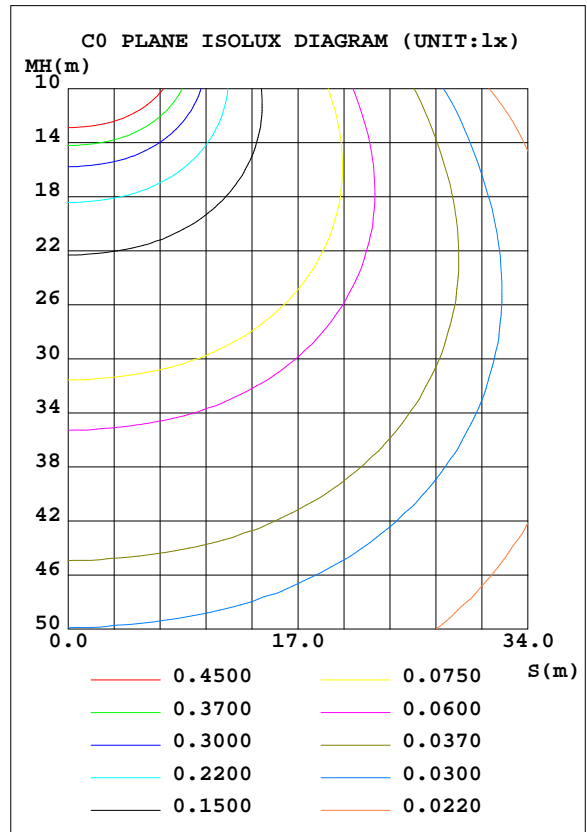
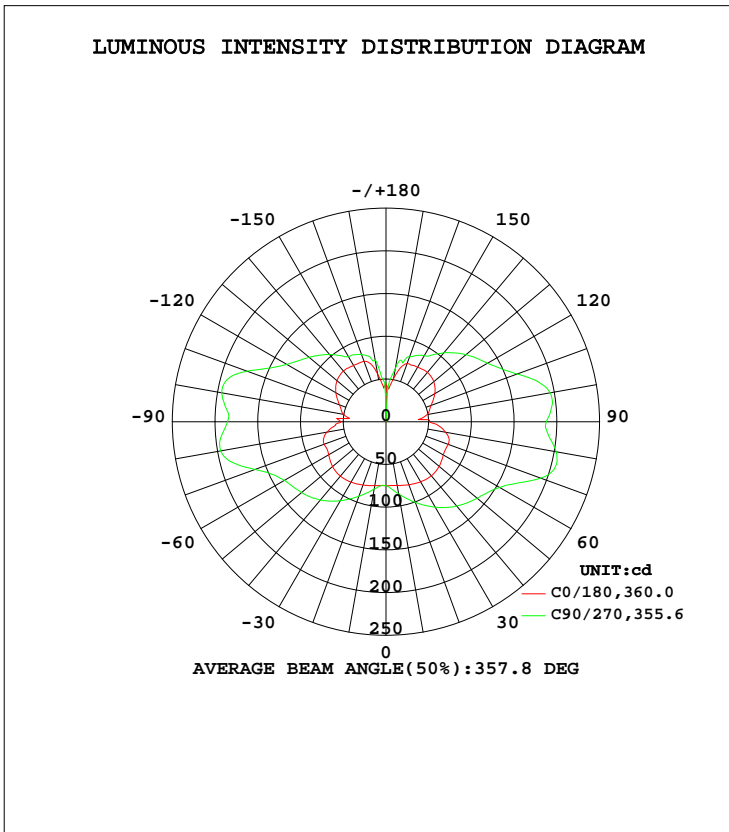


LUMINAIRE PHOTOMETRIC TEST REPORT

Test:U:120.0V I:0.1557A P:18.33W PF:0.9811 Lamp Flux:1364.65x1 lm		
NAME: ASD-LWS27-18D18CC 3000K	TYPE:N/A	WEIGHT:N/A
SPEC.:N/A	DIM.: N/A	SERIAL No.:N/A
MFR.: ASD Lighting corp	SUR.:N/A	Shielding Angle:N/A

DATA OF LAMP		PHOTOMETRIC DATA Eff: 74.45 lm/W			
MODEL	PSZ2S220624001-10	I _{max} (cd)	205.6	S/MH(C0/180)	1.67
NOMINAL POWER(W)		LOR(%)	100.0	S/MH(C90/270)	2.37
RATED VOLTAGE(V)	120	TOTAL FLUX(lm)	1364.7	η UP, DN(C0-180)	23.4,25.8
NOMINAL FLUX(lm)	1364.65	CIE CLASS	DIFFUSE	η UP, DN(C180-360)	23.5,27.2
LAMPS INSIDE	1	η up(%)	46.9	CIBSE SHR NOM	2.00
TEST VOLTAGE(V)	120	η down(%)	53.1	CIBSE SHR MAX	0.00



C Range: 0 - 360DEG
 C Interval: 22.5DEG
 Test Speed: HIGH
 Temperature:25.8DEG
 Operators:Carl
 Test Date:2022-06-25

γ Range: 0 - 180DEG
 γ Interval: 1.0DEG
 Test System:EVERFINE GO-R5000_V2 SYSTEM V2.0.351
 Humidity:42%
 Test Distance:2.526m [K=1.0000]
 Remarks:

ZONAL FLUX DIAGRAM

ZONAL FLUX DIAGRAM:

γ	C0	C45	C90	C135	C180	C225	C270	C315	γ	Φ zone	Φ total	%lum, lamp
10	75.92	77.31	79.98	77.23	75.62	81.76	85.67	82.10	0- 10	7.377	7.377	0.54,0.54
20	78.83	86.89	92.81	86.77	78.48	92.85	100.4	93.57	10- 20	23.96	31.34	2.3,2.3
30	81.76	97.39	106.8	97.44	81.31	103.9	115.6	104.9	20- 30	43.61	74.95	5.49,5.49
40	83.02	106.3	119.6	106.8	82.68	112.9	128.8	113.9	30- 40	65.01	140.0	10.3,10.3
50	81.65	112.0	129.1	112.7	81.30	118.0	139.3	119.2	40- 50	85.38	225.3	16.5,16.5
60	77.37	113.4	137.4	114.6	77.60	119.9	153.7	121.2	50- 60	102.2	327.5	24,24
70	77.09	117.7	163.2	118.8	77.58	126.3	193.0	129.1	60- 70	119.1	446.6	32.7,32.7
80	70.13	125.7	196.5	129.0	70.62	128.8	202.2	130.7	70- 80	139.8	586.4	43,43
90	53.01	116.2	185.5	119.7	50.75	115.3	187.7	120.3	80- 90	137.8	724.1	53.1,53.1
100	50.56	121.8	195.1	125.2	48.93	119.1	195.1	123.3	90-100	134.3	858.4	62.9,62.9
110	57.90	108.2	173.2	111.5	56.24	108.8	163.6	112.0	100-110	127.2	985.6	72.2,72.2
120	67.79	97.39	134.4	98.20	65.95	101.3	137.2	104.0	110-120	104.3	1090	79.9,79.9
130	74.77	91.44	117.5	91.97	72.96	94.68	122.3	96.24	120-130	87.47	1177	86.3,86.3
140	77.55	83.64	102.8	83.84	75.51	85.56	105.4	87.44	130-140	71.17	1249	91.5,91.5
150	76.18	83.65	88.07	83.95	73.80	80.15	89.36	85.81	140-150	53.42	1302	95.4,95.4
160	75.42	77.53	83.94	79.78	72.64	73.41	80.95	80.02	150-160	37.23	1339	98.1,98.1
170	56.99	65.74	73.87	60.47	51.68	54.70	63.69	67.66	160-170	20.50	1360	99.6,99.6
180	44.59	38.31	11.09	38.06	43.24	40.88	30.75	30.62	170-180	4.928	1365	100,100
DEG	LUMINOUS INTENSITY:cd									UNIT:lm		

Conical surface Flux(90deg): 180.3 lm

%lum = 13.2%
%lamp = 13.2%

Conical surface Flux(120deg): 327.49 lm

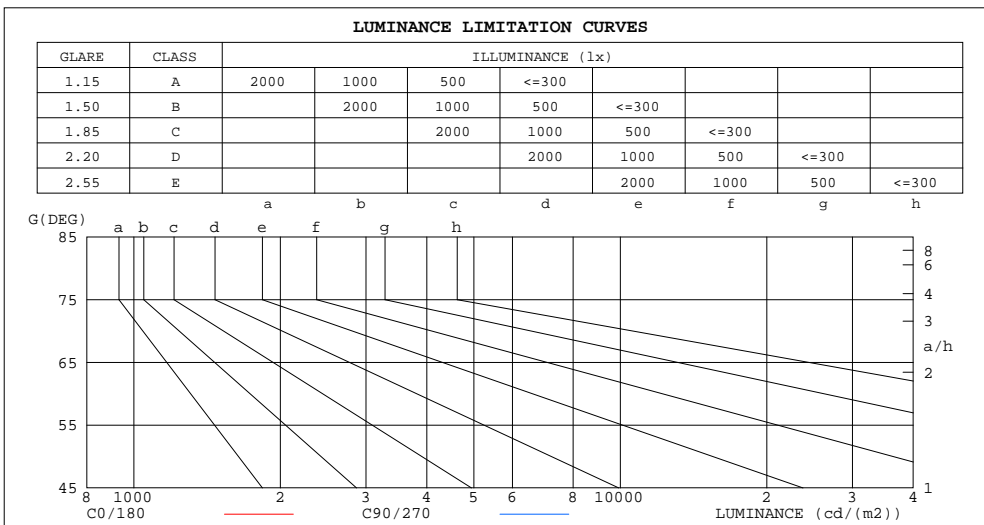
%lum = 24.0%
%lamp = 24.0%

C Range: 0 - 360DEG
C Interval: 22.5DEG
Test Speed: HIGH
Temperature:25.8DEG
Operators:Carl
Test Date:2022-06-25

γ Range: 0 - 180DEG
γ Interval: 1.0DEG
Test System:EVERFINE GO-R5000_V2 SYSTEM V2.0.351
Humidity:42%
Test Distance:2.526m [K=1.0000]
Remarks:

LUMINANCE LIMITATION CURVES

Test:U:120.0V I:0.1557A P:18.33W PF:0.9811 Lamp Flux:1364.65x1 lm		
NAME: ASD-LWS27-18D18CC 3000K	TYPE:N/A	WEIGHT:N/A
SPEC.:N/A	DIM.: N/A	SERIAL No.:N/A
MFR.: ASD Lighting corp	SUR.:N/A	Shielding Angle:N/A



LUMINANCE cd/(m2)		
G (DEG)	C0/180	C90/270
85	560014	1783174
80	322673	908880
75	233199	575061
70	180087	383228
65	144074	278149
60	123631	220741
55	111112	186022
50	101497	161263
45	93433	141649

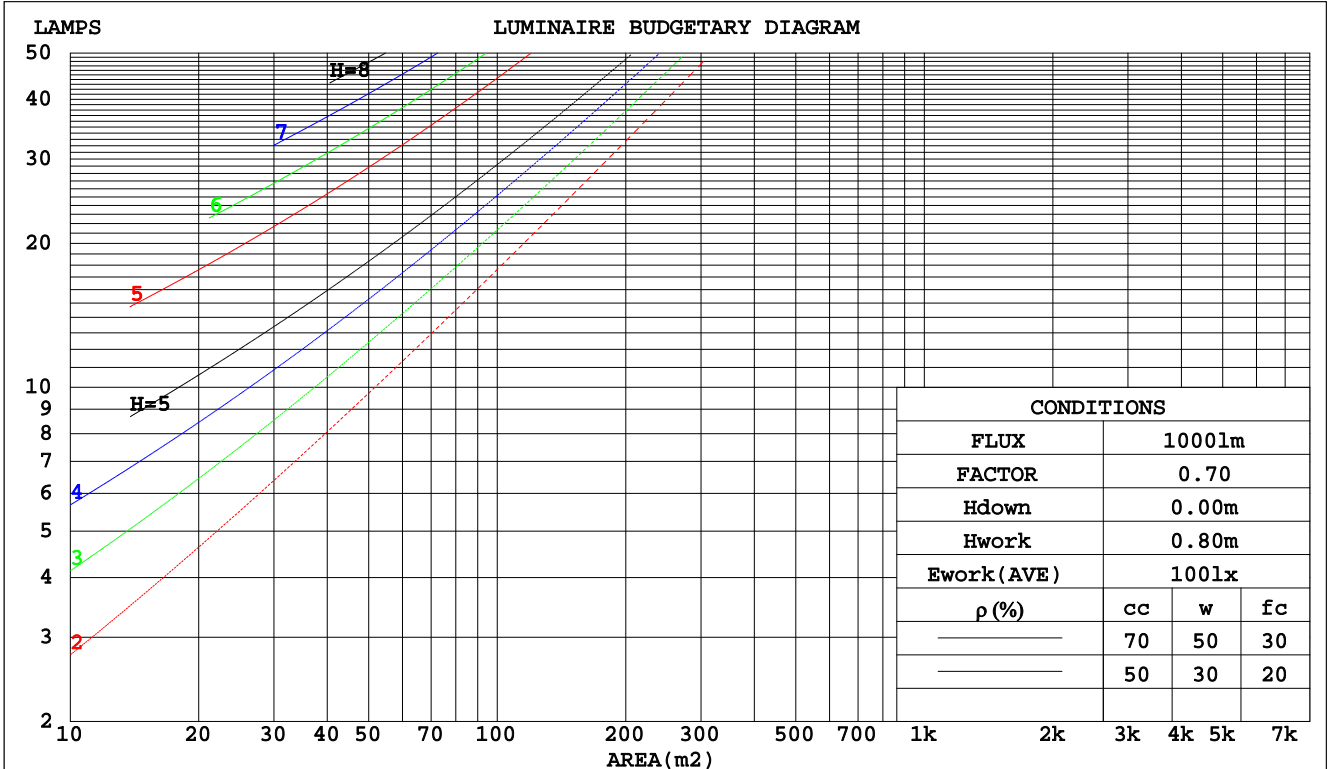
C Range: 0 - 360DEG
 C Interval: 22.5DEG
 Test Speed: HIGH
 Temperature: 25.8DEG
 Operators: Carl
 Test Date: 2022-06-25

γ Range: 0 - 180DEG
 γ Interval: 1.0DEG
 Test System: EVERFINE GO-R5000_V2 SYSTEM V2.0.351
 Humidity: 42%
 Test Distance: 2.526m [K=1.0000]
 Remarks:

CU AND LUMINAIRE BUDGETARY ESTIMATE DIAGRAM

Test:U:120.0V I:0.1557A P:18.33W PF:0.9811 Lamp Flux:1364.65x1 lm		
NAME: ASD-LWS27-18D18CC 3000K	TYPE:N/A	WEIGHT:N/A
SPEC.:N/A	DIM.: N/A	SERIAL No.:N/A
MFR.: ASD Lighting corp	SUR.:N/A	Shielding Angle:N/A

pcc	80%			70%			50%			30%			10%			0
	50%	30%	10%	50%	30%	10%	50%	30%	10%	50%	30%	10%	50%	30%	10%	0
pw																0
pfc	20%			20%			20%			20%			20%			0
RCR	RCR:Room Cavity Ratio						Coefficients of Utilization(CU)									
0.0	1.08	1.08	1.08	.00	.00	.00	.85	.85	.85	.71	.71	.71	.59	.59	.59	.53
1.0	.87	.81	.76	.80	.75	.70	.67	.63	.59	.55	.52	.49	.44	.42	.40	.34
2.0	.73	.65	.58	.67	.60	.54	.56	.50	.45	.45	.41	.37	.36	.33	.30	.25
3.0	.63	.53	.46	.57	.49	.43	.48	.41	.36	.39	.34	.29	.30	.26	.23	.19
4.0	.54	.45	.38	.50	.41	.35	.41	.35	.29	.34	.28	.24	.26	.22	.19	.15
5.0	.48	.38	.31	.44	.35	.29	.37	.30	.24	.30	.24	.20	.23	.19	.16	.12
6.0	.43	.33	.27	.39	.31	.25	.33	.26	.21	.26	.21	.17	.21	.16	.13	.10
7.0	.38	.29	.23	.35	.27	.21	.29	.23	.18	.24	.18	.15	.19	.15	.11	.09
8.0	.34	.26	.20	.32	.24	.18	.26	.20	.15	.22	.16	.13	.17	.13	.10	.07
9.0	.31	.23	.17	.29	.21	.16	.24	.18	.14	.20	.15	.11	.16	.12	.09	.06
10.0	.28	.21	.15	.26	.19	.14	.22	.16	.12	.18	.13	.10	.14	.11	.08	.06



C Range: 0 - 360DEG
 C Interval: 22.5DEG
 Test Speed: HIGH
 Temperature:25.8DEG
 Operators:Carl
 Test Date:2022-06-25

γ Range: 0 - 180DEG
 γ Interval: 1.0DEG
 Test System:EVERFINE GO-R5000_V2 SYSTEM V2.0.351
 Humidity:42%
 Test Distance:2.526m [K=1.0000]
 Remarks:

WEC AND CCEC

Test:U:120.0V I:0.1557A P:18.33W PF:0.9811 Lamp Flux:1364.65x1 lm		
NAME: ASD-LWS27-18D18CC 3000K	TYPE:N/A	WEIGHT:N/A
SPEC.:N/A	DIM.: N/A	SERIAL No.:N/A
MFR.: ASD Lighting corp	SUR.:N/A	Shielding Angle:N/A

ρcc	80%			70%			50%			30%			10%			0
ρw	50%	30%	10%	50%	30%	10%	50%	30%	10%	50%	30%	10%	50%	30%	10%	0
ρfc	20%			20%			20%			20%			20%			0
RCR	RCR:Room Cavity Ratio						Wall Exitance Coefficients(WEC)									
0.0																
1.0	.421	.239	.076	.399	.228	.072	.359	.206	.066	.322	.186	.060	.288	.167	.054	
2.0	.350	.192	.059	.330	.182	.056	.293	.163	.051	.259	.145	.046	.228	.129	.041	
3.0	.304	.162	.048	.286	.153	.046	.252	.137	.042	.221	.121	.037	.192	.106	.033	
4.0	.270	.140	.041	.254	.133	.039	.223	.118	.035	.194	.104	.031	.167	.091	.028	
5.0	.243	.124	.036	.228	.117	.034	.200	.104	.031	.173	.091	.027	.148	.079	.024	
6.0	.221	.111	.032	.207	.105	.030	.181	.093	.027	.157	.081	.024	.134	.070	.021	
7.0	.203	.100	.028	.190	.095	.027	.166	.084	.024	.143	.073	.021	.122	.063	.019	
8.0	.187	.092	.026	.176	.086	.024	.153	.077	.022	.132	.067	.019	.112	.058	.017	
9.0	.174	.084	.024	.163	.080	.022	.142	.070	.020	.122	.061	.018	.104	.053	.015	
10.0	.163	.078	.022	.152	.074	.021	.133	.065	.018	.114	.057	.016	.097	.049	.014	

ρcc	80%			70%			50%			30%			10%			0
ρw	50%	30%	10%	50%	30%	10%	50%	30%	10%	50%	30%	10%	50%	30%	10%	0
ρfc	20%			20%			20%			20%			20%			0
RCR	RCR:Room Cavity Ratio						Ceiling Cavity Exitance Coefficients(CCEC)									
0.0	.548	.548	.548	.468	.468	.468	.320	.320	.320	.184	.184	.184	.059	.059	.059	
1.0	.549	.516	.486	.469	.443	.418	.321	.305	.289	.185	.176	.168	.059	.057	.054	
2.0	.543	.495	.454	.465	.426	.392	.319	.295	.274	.184	.171	.160	.059	.055	.052	
3.0	.536	.479	.434	.459	.414	.377	.315	.287	.264	.182	.168	.156	.059	.054	.051	
4.0	.528	.468	.422	.453	.404	.366	.312	.282	.258	.180	.165	.153	.058	.054	.050	
5.0	.521	.459	.413	.447	.397	.359	.308	.277	.254	.179	.163	.151	.058	.053	.050	
6.0	.514	.452	.407	.442	.391	.354	.305	.274	.251	.177	.161	.149	.057	.053	.049	
7.0	.507	.445	.402	.436	.386	.351	.301	.271	.249	.175	.159	.148	.057	.052	.049	
8.0	.500	.440	.399	.431	.382	.348	.298	.268	.247	.173	.158	.147	.056	.052	.049	
9.0	.494	.436	.396	.426	.378	.346	.295	.266	.245	.172	.157	.146	.056	.052	.049	
10.0	.488	.432	.394	.421	.375	.344	.292	.264	.244	.170	.156	.146	.055	.051	.048	

C Range: 0 - 360DEG
 C Interval: 22.5DEG
 Test Speed: HIGH
 Temperature:25.8DEG
 Operators:Carl
 Test Date:2022-06-25

γ Range: 0 - 180DEG
 γ Interval: 1.0DEG
 Test System:EVERFINE GO-R5000_V2 SYSTEM V2.0.351
 Humidity:42%
 Test Distance:2.526m [K=1.0000]
 Remarks:

UGR(Unified Glare Rating) Table

Test:U:120.0V I:0.1557A P:18.33W PF:0.9811 Lamp Flux:1364.65x1 lm										
NAME: ASD-LWS27-18D18CC 3000K					TYPE:N/A			WEIGHT:N/A		
SPEC.:N/A					DIM.: N/A			SERIAL No.:N/A		
MFR.: ASD Lighting corp					SUR.:N/A			Shielding Angle:N/A		
ceiling/cavity	0.7	0.7	0.5	0.5	0.3	0.7	0.7	0.5	0.5	0.3
walls	0.5	0.3	0.5	0.3	0.3	0.5	0.3	0.5	0.3	0.3
working plane	0.2	0.2	0.2	0.2	0.2	0.2	0.2	0.2	0.2	0.2
Room dimensions	Viewed crosswise					Viewed endwise				
x = 2H y = 2H	25.8	27.0	26.7	27.8	28.9	28.3	29.5	29.2	30.3	31.4
3H	28.7	29.7	29.5	30.6	31.7	32.2	33.3	33.1	34.2	35.3
4H	30.3	31.3	31.2	32.2	33.4	34.7	35.7	35.6	36.6	37.7
6H	32.0	32.9	32.9	33.9	35.0	37.3	38.2	38.2	39.2	40.3
8H	32.9	33.8	33.8	34.7	35.9	38.7	39.6	39.6	40.5	41.7
12H	33.8	34.7	34.7	35.6	36.8	40.1	41.0	41.0	41.9	43.1
4H 2H	27.4	28.4	28.3	29.3	30.4	29.0	30.0	29.9	30.9	32.1
3H	30.4	31.2	31.3	32.1	33.3	33.2	34.0	34.1	34.9	36.1
4H	32.1	32.8	33.0	33.8	35.0	35.8	36.5	36.7	37.5	38.7
6H	33.8	34.5	34.8	35.5	36.7	38.6	39.3	39.5	40.2	41.5
8H	34.8	35.4	35.7	36.4	37.6	40.0	40.7	41.0	41.7	42.9
12H	35.7	36.3	36.7	37.3	38.6	41.6	42.2	42.6	43.2	44.5
8H 4H	33.4	34.1	34.4	35.1	36.3	36.2	36.8	37.1	37.8	39.1
6H	35.4	36.0	36.4	37.0	38.3	39.3	39.8	40.3	40.8	42.1
8H	36.5	37.0	37.5	38.0	39.3	41.0	41.5	41.9	42.5	43.8
12H	37.6	38.0	38.6	39.0	40.4	42.8	43.2	43.8	44.2	45.6
12H 4H	34.0	34.6	35.0	35.6	36.8	36.2	36.9	37.2	37.8	39.1
6H	36.1	36.6	37.1	37.6	38.9	39.4	39.9	40.4	40.9	42.2
8H	37.3	37.7	38.3	38.7	40.1	41.2	41.6	42.2	42.7	44.0
Variations with the observer position at spacings:										
S = 1.0H	+ 0.1 / - 0.1					+ 0.1 / - 0.1				
1.5H	+ 0.2 / - 0.2					+ 0.2 / - 0.3				
2.0H	+ 0.3 / - 0.4					+ 0.3 / - 0.4				

CIE Pub.117 Corrected 1365 lm Total Lamp Luminous Flux.(8log(F/F0) = 1.1)

C Range: 0 - 360DEG
 C Interval: 22.5DEG
 Test Speed: HIGH
 Temperature:25.8DEG
 Operators:Carl
 Test Date:2022-06-25

γ Range: 0 - 180DEG
 γ Interval: 1.0DEG
 Test System:EVERFINE GO-R5000_V2 SYSTEM V2.0.351
 Humidity:42%
 Test Distance:2.526m [K=1.0000]
 Remarks:

UTILIZATION FACTORS TABLE

Test:U:120.0V I:0.1557A P:18.33W PF:0.9811 Lamp Flux:1364.65x1 lm		
NAME: ASD-LWS27-18D18CC 3000K	TYPE:N/A	WEIGHT:N/A
SPEC.:N/A	DIM.: N/A	SERIAL No.:N/A
MFR.: ASD Lighting corp	SUR.:N/A	Shielding Angle:N/A

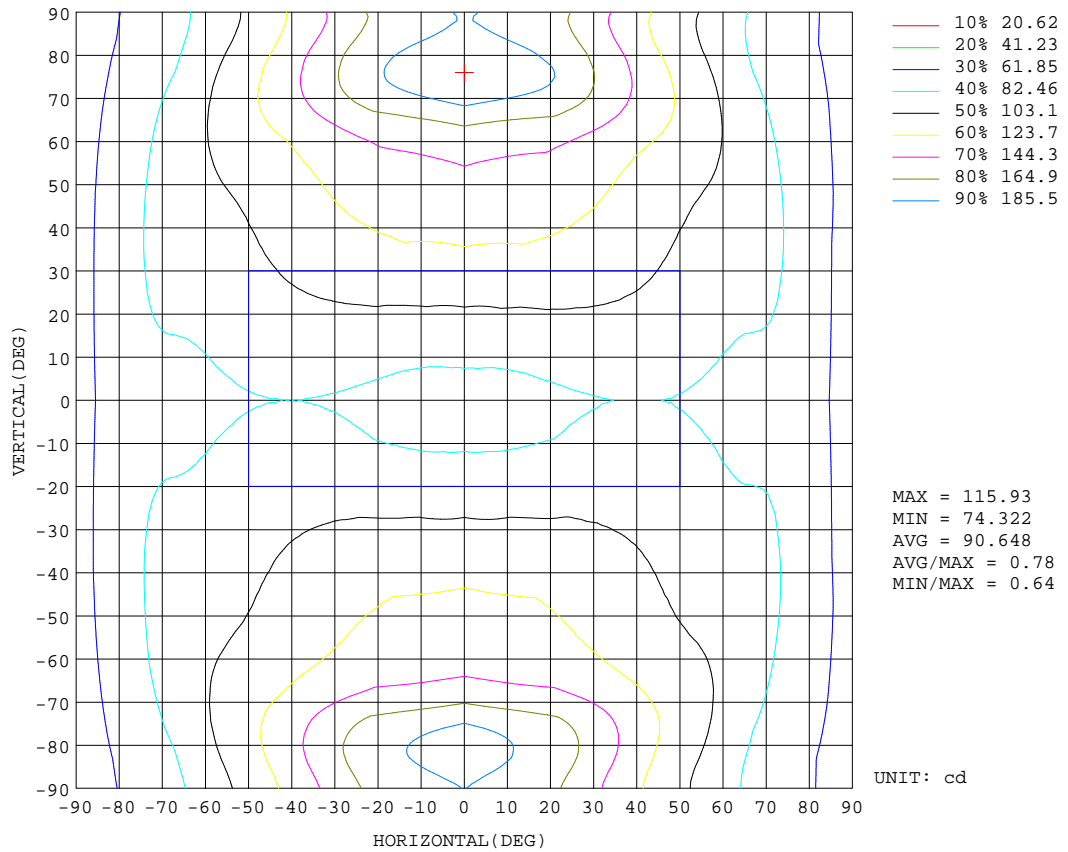
REFLECTANCE										
Ceiling	0.8	0.8	0.8	0.7	0.7	0.7	0.5	0.5	0.5	0
Walls	0.7	0.5	0.3	0.7	0.5	0.3	0.7	0.5	0.3	0
Working plane	0.2	0.2	0.2	0.2	0.2	0.2	0.2	0.2	0.2	0
ROOM INDEX	UTILIZATION FACTORS(PERCENT) $k(RI) \times RCR = 5$									
k = 0.60	36	24	16	34	23	16	31	21	15	7
0.80	45	31	22	42	29	21	37	27	20	10
1.00	52	38	28	49	36	27	43	34	25	13
1.25	59	44	35	55	42	33	48	37	30	16
1.50	64	50	40	60	47	38	51	41	34	19
2.00	72	59	49	67	55	46	57	48	41	23
2.50	77	65	55	71	60	52	61	52	45	26
3.00	81	70	61	75	65	57	64	56	50	29
4.00	86	77	69	80	71	64	68	61	55	32
5.00	90	81	74	83	75	69	70	65	60	35
ROOM INDEX	UF(total)									Direct
According to DIN EN 13032-2 2004			Suspended				SHRNOM = 1.25			

C Range: 0 - 360DEG
 C Interval: 22.5DEG
 Test Speed: HIGH
 Temperature:25.8DEG
 Operators:Carl
 Test Date:2022-06-25

γ Range: 0 - 180DEG
 γ Interval: 1.0DEG
 Test System:EVERFINE GO-R5000_V2 SYSTEM V2.0.351
 Humidity:42%
 Test Distance:2.526m [K=1.0000]
 Remarks:

ISOCANDELA DIAGRAM

Test:U:120.0V I:0.1557A P:18.33W PF:0.9811 Lamp Flux:1364.65x1 lm		
NAME: ASD-LWS27-18D18CC 3000K	TYPE:N/A	WEIGHT:N/A
SPEC.:N/A	DIM.: N/A	SERIAL No.:N/A
MFR.: ASD Lighting corp	SUR.:N/A	Shielding Angle:N/A

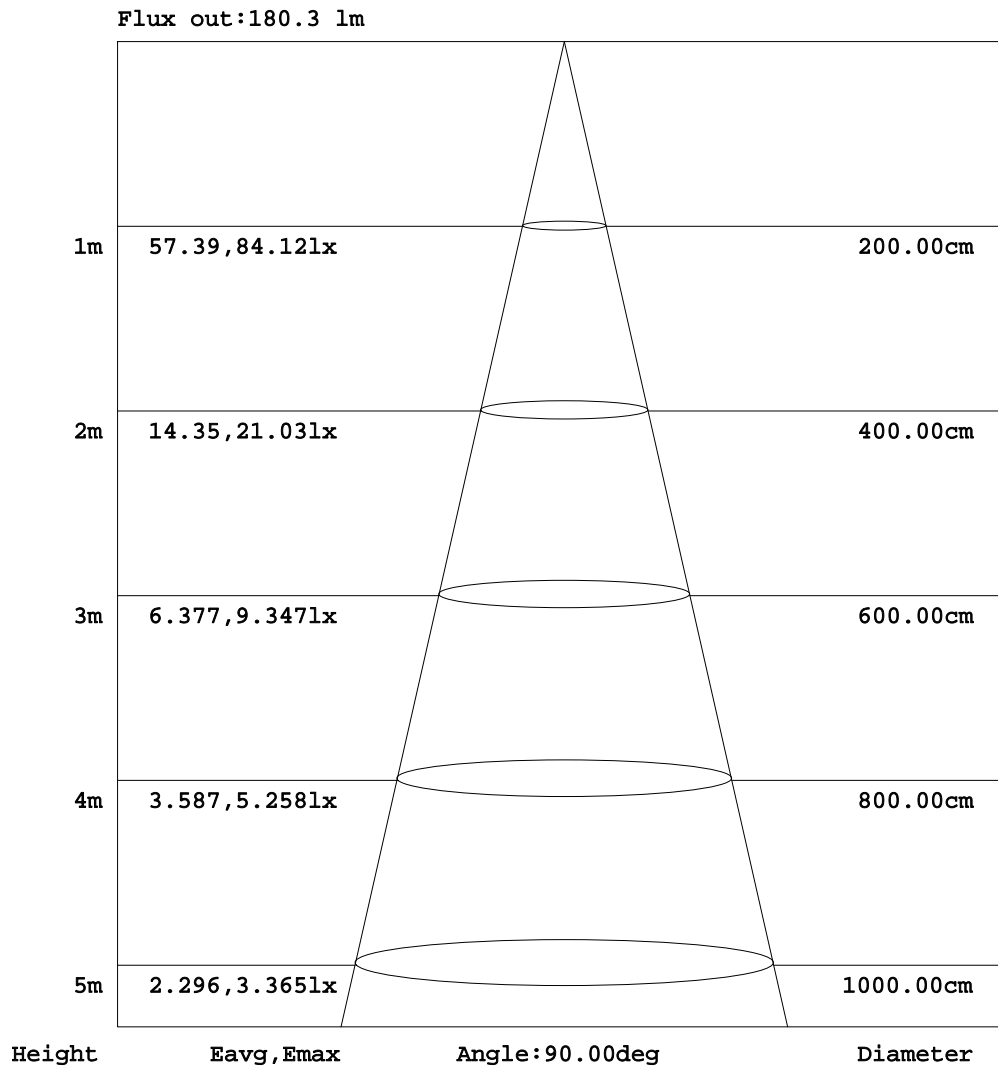


C Range: 0 - 360DEG
 C Interval: 22.5DEG
 Test Speed: HIGH
 Temperature:25.8DEG
 Operators:Carl
 Test Date:2022-06-25

γ Range: 0 - 180DEG
 γ Interval: 1.0DEG
 Test System:EVERFINE GO-R5000_V2 SYSTEM V2.0.351
 Humidity:42%
 Test Distance:2.526m [K=1.0000]
 Remarks:

AAI Figure

Test:U:120.0V I:0.1557A P:18.33W PF:0.9811 Lamp Flux:1364.65x1 lm		
NAME: ASD-LWS27-18D18CC 3000K	TYPE:N/A	WEIGHT:N/A
SPEC.:N/A	DIM.: N/A	SERIAL No.:N/A
MFR.: ASD Lighting corp	SUR.:N/A	Shielding Angle:N/A



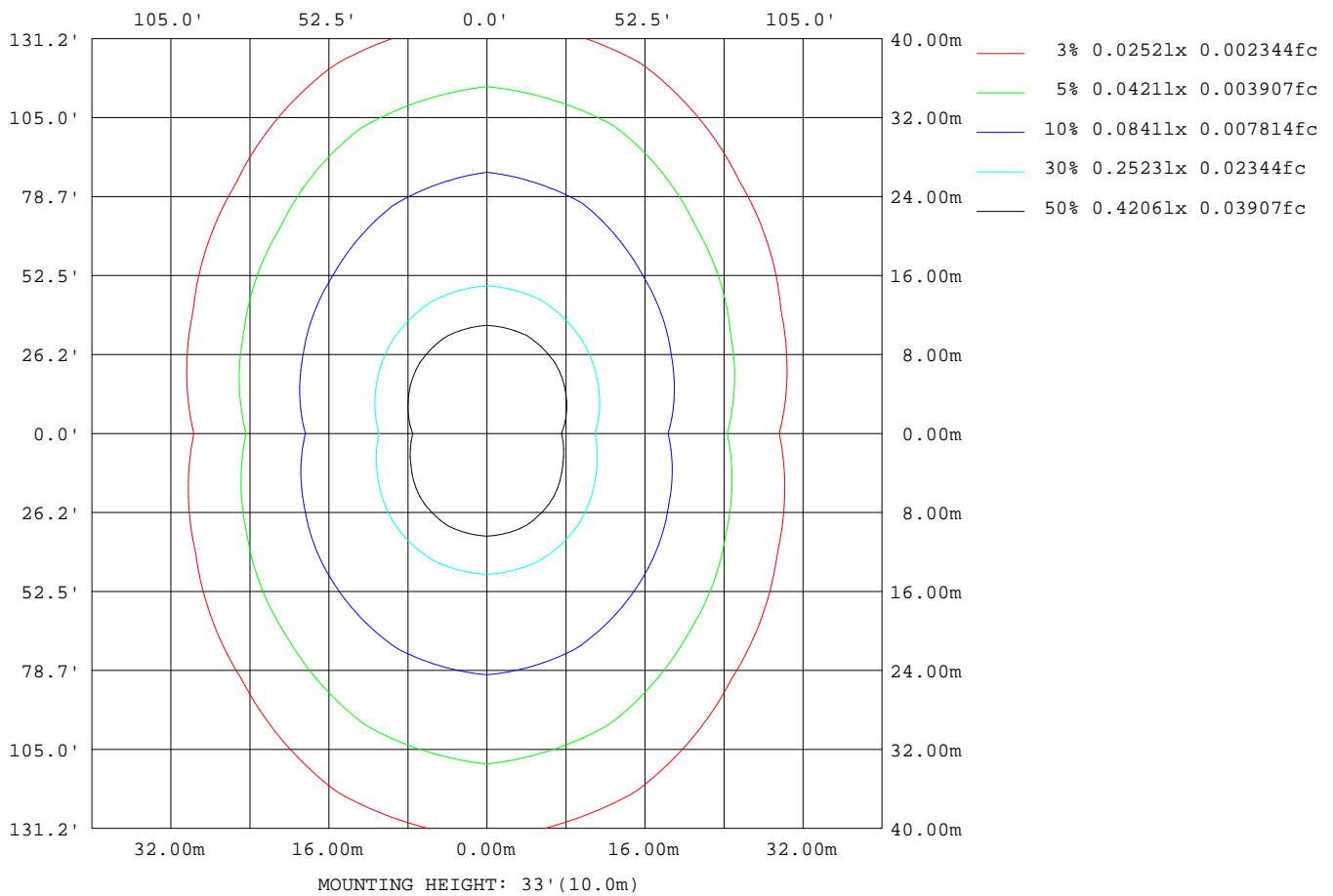
Note:The Curves indicate the illuminated area and the average illumination when the luminaire is at different distance.

C Range: 0 - 360DEG
 C Interval: 22.5DEG
 Test Speed: HIGH
 Temperature:25.8DEG
 Operators:Carl
 Test Date:2022-06-25

γ Range: 0 - 180DEG
 γ Interval: 1.0DEG
 Test System:EVERFINE GO-R5000_V2 SYSTEM V2.0.351
 Humidity:42%
 Test Distance:2.526m [K=1.0000]
 Remarks:

ISOLUX DIAGRAM

Test:U:120.0V I:0.1557A P:18.33W PF:0.9811 Lamp Flux:1364.65x1 lm		
NAME: ASD-LWS27-18D18CC 3000K	TYPE:N/A	WEIGHT:N/A
SPEC.:N/A	DIM.: N/A	SERIAL No.:N/A
MFR.: ASD Lighting corp	SUR.:N/A	Shielding Angle:N/A



C Range: 0 - 360DEG
 C Interval: 22.5DEG
 Test Speed: HIGH
 Temperature:25.8DEG
 Operators:Carl
 Test Date:2022-06-25

γ Range: 0 - 180DEG
 γ Interval: 1.0DEG
 Test System:EVERFINE GO-R5000_V2 SYSTEM V2.0.351
 Humidity:42%
 Test Distance:2.526m [K=1.0000]
 Remarks:

LED Avg.L Report

Test:U:120.0V I:0.1557A P:18.33W PF:0.9811 Lamp Flux:1364.65x1 lm		
NAME: ASD-LWS27-18D18CC 3000K	TYPE:N/A	WEIGHT:N/A
SPEC.:N/A	DIM.: N/A	SERIAL No.:N/A
MFR.: ASD Lighting corp	SUR.:N/A	Shielding Angle:N/A

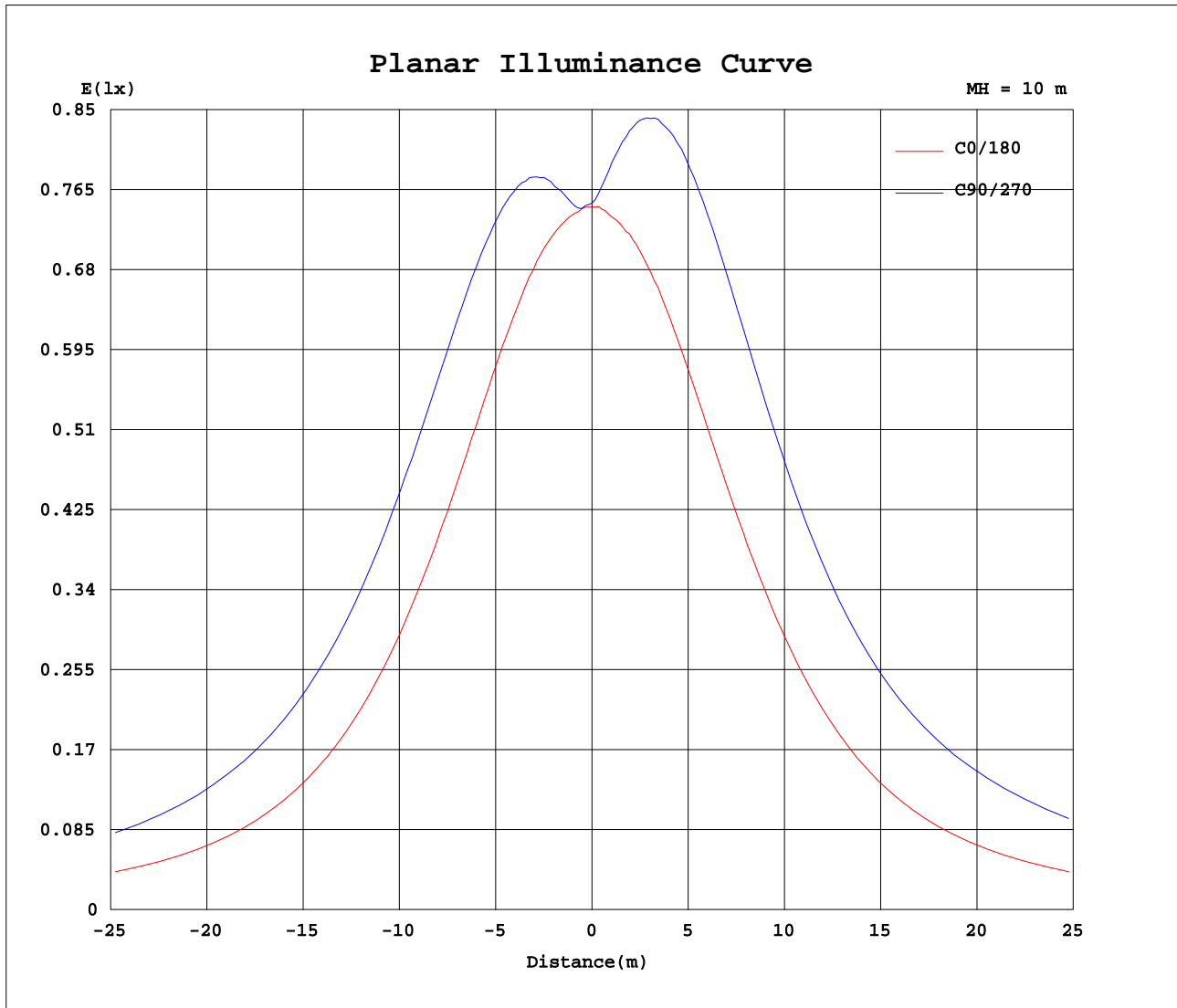
AvgL	cd/m2
L_0~180(65)av	144921
L_0~180(75)av	235057
L_0~180(85)av	570127
L_90~270(65)av	299698
L_90~270(75)av	604039
L_90~270(85)av	1767639
L_45(65)av	225263
L_45(75)av	396382
L_45(85)av	1126897

Standard: GB/T 29293-2012

C Range: 0 - 360DEG
 C Interval: 22.5DEG
 Test Speed: HIGH
 Temperature:25.8DEG
 Operators:Carl
 Test Date:2022-06-25

γ Range: 0 - 180DEG
 γ Interval: 1.0DEG
 Test System:EVERFINE GO-R5000_V2 SYSTEM V2.0.351
 Humidity:42%
 Test Distance:2.526m [K=1.0000]
 Remarks:

Planar Illuminance Curve



C Range: 0 - 360DEG
 C Interval: 22.5DEG
 Test Speed: HIGH
 Temperature: 25.8DEG
 Operators: Carl
 Test Date: 2022-06-25

γ Range: 0 - 180DEG
 γ Interval: 1.0DEG
 Test System: EVERFINE GO-R5000_V2 SYSTEM V2.0.351
 Humidity: 42%
 Test Distance: 2.526m [K=1.0000]
 Remarks:

LUMINOUS DISTRIBUTION INTENSITY DATA

Test:U:120.0V I:0.1557A P:18.33W PF:0.9811 Lamp Flux:1364.65x1 lm		
NAME: ASD-LWS27-18D18CC 3000K	TYPE:N/A	WEIGHT:N/A
SPEC.:N/A	DIM.: N/A	SERIAL No.:N/A
MFR.: ASD Lighting corp	SUR.:N/A	Shielding Angle:N/A

Table--1

UNIT: cd

C(DEG) γ (DEG)	0	22.5	45	67.5	90	112.5	135	157.5	180	202.5	225	247.5	270	292.5	315	337.5			
0	74.9	74.9	74.9	74.9	74.9	74.9	74.9	74.9	74.9	74.9	74.9	74.9	74.9	74.9	74.9	74.9			
5	75.0	74.8	74.8	75.2	75.4	75.1	74.7	74.7	74.9	75.9	77.3	78.7	79.2	78.8	77.6	76.0			
10	75.9	75.8	77.3	79.2	80.0	79.1	77.2	75.5	75.6	78.3	81.8	84.5	85.7	84.7	82.1	78.8			
15	77.4	78.1	81.7	84.7	86.0	84.7	81.6	77.9	77.0	81.6	87.0	91.1	93.0	91.5	87.6	82.2			
20	78.8	81.1	86.9	90.9	92.8	90.7	86.8	80.8	78.5	85.0	92.8	98.1	100	98.5	93.6	85.9			
25	80.5	84.4	92.1	97.5	99.8	97.5	92.0	84.3	79.9	88.5	98.4	105	108	106	99.2	89.7			
30	81.8	87.4	97.4	104	107	104	97.4	87.5	81.3	91.9	104	112	116	113	105	93.0			
35	82.7	90.3	102	110	114	111	102	90.4	82.2	94.7	109	119	122	119	110	96.0			
40	83.0	92.5	106	116	120	116	107	92.9	82.7	96.9	113	125	129	125	114	98.2			
45	82.7	94.0	110	121	125	121	110	94.7	82.4	98.3	116	129	134	130	117	99.5			
50	81.7	94.5	112	125	129	125	113	95.5	81.3	98.6	118	133	139	134	119	99.8			
55	79.8	94.2	113	127	133	128	114	95.3	79.5	98.0	119	137	145	138	120	98.9			
60	77.4	93.0	113	131	137	131	115	94.5	77.6	96.8	120	143	154	144	121	97.4			
65	76.2	92.2	114	137	146	137	115	93.8	76.8	96.2	122	153	170	156	124	96.7			
70	77.1	93.2	118	149	163	149	119	94.2	77.6	97.2	126	169	193	173	129	97.6			
75	75.5	93.4	123	166	185	166	124	94.7	76.4	96.2	131	181	205	183	134	96.4			
80	70.1	89.6	126	174	197	176	129	91.9	70.6	91.1	129	179	202	180	131	90.8			
85	61.1	82.3	122	171	194	174	126	85.3	63.0	82.1	121	169	191	171	122	82.0			
90	53.0	76.7	116	164	185	167	120	77.4	50.8	75.4	115	165	188	169	120	79.4			
95	43.2	82.1	120	167	188	169	122	79.9	40.3	80.2	119	170	194	175	124	85.1			
100	50.6	84.8	122	172	195	175	125	83.8	48.9	82.8	119	170	195	174	123	86.4			
105	54.4	79.0	116	167	192	171	121	78.4	52.8	78.4	115	161	183	163	118	81.5			
110	57.9	73.1	108	150	173	155	111	73.4	56.2	74.6	109	146	164	147	112	77.9			
115	62.9	72.3	102	133	149	136	103	71.9	61.1	74.5	105	133	148	135	107	77.3			
120	67.8	72.1	97.4	123	134	124	98.2	71.6	66.0	74.7	101	126	137	127	104	77.2			
125	71.8	74.1	94.3	115	125	116	95.4	72.1	70.0	75.9	98.1	120	130	121	100	78.9			
130	74.8	76.7	91.4	110	117	110	92.0	75.1	73.0	78.1	94.7	114	122	115	96.2	80.1			
135	76.7	78.4	87.5	104	110	104	88.2	77.0	74.8	78.5	89.9	107	114	108	91.3	80.1			
140	77.6	78.8	83.6	97.3	103	97.8	83.8	77.7	75.5	78.3	85.6	99.1	105	100	87.4	79.6			
145	77.0	77.3	84.5	90.3	94.9	90.8	83.9	77.4	74.9	76.0	84.6	90.4	95.6	92.4	87.5	78.2			
150	76.2	77.2	83.6	87.3	88.1	87.5	83.9	76.6	73.8	72.5	80.2	87.4	89.4	88.9	85.8	77.1			
155	75.7	77.1	80.7	85.8	86.7	85.4	82.2	76.2	73.0	71.0	77.4	82.9	85.9	85.6	82.6	76.8			
160	75.4	74.8	77.5	82.3	83.9	83.8	79.8	73.4	72.6	73.3	73.4	78.5	81.0	80.9	80.0	75.3			
165	70.4	70.6	75.5	77.2	79.7	78.4	74.3	66.5	65.5	66.8	62.7	72.0	73.2	77.1	75.4	71.2			
170	57.0	61.5	65.7	68.4	73.9	65.3	60.5	53.8	51.7	52.0	54.7	57.1	63.7	68.7	67.7	63.9			
175	42.6	42.4	54.0	53.4	51.7	49.9	40.7	39.8	38.5	38.7	39.2	40.6	47.5	49.5	53.2	55.6			
180	44.6	41.4	38.3	28.3	11.1	29.4	38.1	41.6	43.2	43.2	40.9	36.5	30.7	13.9	30.6	37.9			

C Range: 0 - 360DEG
 C Interval: 22.5DEG
 Test Speed: HIGH
 Temperature:25.8DEG
 Operators:Carl
 Test Date:2022-06-25

γ Range: 0 - 180DEG
 γ Interval: 1.0DEG
 Test System:EVERFINE GO-R5000_V2 SYSTEM V2.0.351
 Humidity:42%
 Test Distance:2.526m [K=1.0000]
 Remarks: