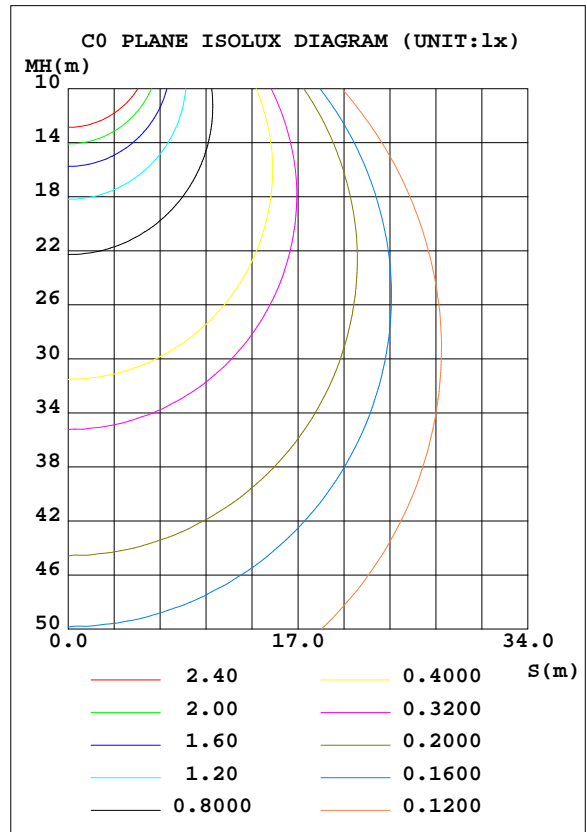
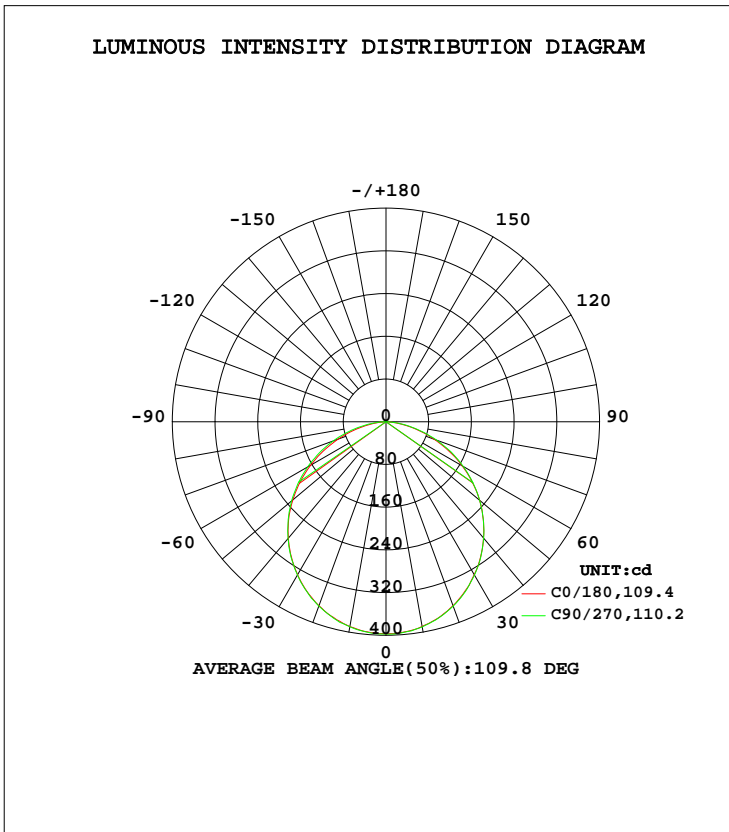


LUMINAIRE PHOTOMETRIC TEST REPORT

| | | |
|---|-----------|---------------------|
| Test:U:120.0V I:0.1382A P:15.60W PF:0.9407 Lamp Flux:1094.82x1 lm | | |
| NAME: LED luminaire | TYPE:N/A | WEIGHT:N/A |
| SPEC.:ASD-MPS-7D15CC-BK 4000K | DIM.: N/A | SERIAL No.:N/A |
| MFR.: ASD LIGHTING CORP | SUR.:N/A | Shielding Angle:N/A |

| DATA OF LAMP | | PHOTOMETRIC DATA Eff: 70.18 lm/W | | | |
|------------------|-------------------|----------------------------------|--------|--------------------|----------|
| MODEL | PSZ2S230215006-10 | I _{max} (cd) | 398.3 | S/MH(C0/180) | 1.24 |
| NOMINAL POWER(W) | | LOR(%) | 100.0 | S/MH(C90/270) | 1.24 |
| RATED VOLTAGE(V) | 120 | TOTAL FLUX(lm) | 1094.8 | η UP, DN(C0-180) | 0.1,50.2 |
| NOMINAL FLUX(lm) | 1094.82 | CIE CLASS | DIRECT | η UP, DN(C180-360) | 0.0,49.6 |
| LAMPS INSIDE | 1 | η up(%) | 0.1 | CIBSE SHR NOM | 1.25 |
| TEST VOLTAGE(V) | 120 | η down(%) | 99.9 | CIBSE SHR MAX | 1.35 |



C Range: 0 - 360DEG
 C Interval: 22.5DEG
 Test Speed: HIGH
 Temperature:24.6DEG
 Operators:Evan
 Test Date:2023-02-21

γ Range: 0 - 180DEG
 γ Interval: 1.0DEG
 Test System:EVERFINE GO-R5000_V2 SYSTEM V2.0.351
 Humidity:51%
 Test Distance:2.532m [K=1.0000]
 Remarks:

ZONAL FLUX DIAGRAM

ZONAL FLUX DIAGRAM:

| γ | C0 | C45 | C90 | C135 | C180 | C225 | C270 | C315 | γ | Φ zone | Φ total | %lum, lamp |
|-----|-----------------------|--------|--------|--------|--------|--------|--------|--------|---------|---------|---------|------------|
| 10 | 389.5 | 389.5 | 389.9 | 389.8 | 389.3 | 389.8 | 390.2 | 388.9 | 0- 10 | 37.57 | 37.57 | 3.43,3.43 |
| 20 | 366.8 | 367.0 | 367.6 | 367.3 | 366.9 | 366.9 | 367.5 | 365.8 | 10- 20 | 107.2 | 144.8 | 13.2,13.2 |
| 30 | 331.0 | 331.0 | 331.6 | 332.0 | 330.7 | 331.2 | 331.4 | 330.2 | 20- 30 | 161.5 | 306.3 | 28,28 |
| 40 | 284.7 | 284.6 | 285.5 | 285.6 | 284.0 | 284.3 | 284.7 | 282.5 | 30- 40 | 193.3 | 499.6 | 45.6,45.6 |
| 50 | 227.7 | 229.3 | 231.1 | 230.9 | 229.2 | 228.9 | 229.0 | 227.1 | 40- 50 | 198.8 | 698.3 | 63.8,63.8 |
| 60 | 163.0 | 166.5 | 169.3 | 169.9 | 164.6 | 166.8 | 166.7 | 163.7 | 50- 60 | 177.2 | 875.5 | 80,80 |
| 70 | 95.45 | 99.76 | 104.9 | 103.1 | 96.38 | 98.55 | 100.5 | 95.56 | 60- 70 | 131.5 | 1007 | 92,92 |
| 80 | 33.35 | 36.95 | 43.25 | 39.85 | 34.74 | 36.04 | 39.07 | 33.62 | 70- 80 | 71.13 | 1078 | 98.5,98.5 |
| 90 | 0.0703 | 0.0750 | 0.1460 | 0.0876 | 0.0173 | 0.0194 | 0.0203 | 0.0198 | 80- 90 | 15.49 | 1094 | 99.9,99.9 |
| 100 | 0.0876 | 0.1079 | 0.0970 | 0.1126 | 0.0330 | 0.0439 | 0.0397 | 0.0535 | 90-100 | 0.0598 | 1094 | 99.9,99.9 |
| 110 | 0.1136 | 0.1234 | 0.1191 | 0.1314 | 0.0728 | 0.0742 | 0.0701 | 0.0739 | 100-110 | 0.0874 | 1094 | 99.9,99.9 |
| 120 | 0.1490 | 0.1515 | 0.1553 | 0.1621 | 0.1022 | 0.1066 | 0.0998 | 0.1078 | 110-120 | 0.1120 | 1094 | 99.9,99.9 |
| 130 | 0.2265 | 0.2328 | 0.2344 | 0.2457 | 0.1654 | 0.1602 | 0.1427 | 0.1532 | 120-130 | 0.1443 | 1094 | 99.9,99.9 |
| 140 | 0.3499 | 0.3606 | 0.3825 | 0.3659 | 0.2117 | 0.2119 | 0.2025 | 0.2091 | 130-140 | 0.1810 | 1094 | 99.9,99.9 |
| 150 | 0.4900 | 0.5100 | 0.5378 | 0.5327 | 0.2518 | 0.2463 | 0.2557 | 0.2341 | 140-150 | 0.2114 | 1094 | 100,100 |
| 160 | 0.6061 | 0.6322 | 0.6544 | 0.6201 | 0.3052 | 0.2971 | 0.3109 | 0.2914 | 150-160 | 0.1974 | 1095 | 100,100 |
| 170 | 0.5928 | 0.5752 | 0.6026 | 0.5724 | 0.3741 | 0.3448 | 0.3638 | 0.3758 | 160-170 | 0.1354 | 1095 | 100,100 |
| 180 | 0.4535 | 0.4355 | 0.4283 | 0.4714 | 0.4724 | 0.4557 | 0.4316 | 0.4474 | 170-180 | 0.0451 | 1095 | 100,100 |
| DEG | LUMINOUS INTENSITY:cd | | | | | | | | | UNIT:lm | | |

Conical surface Flux(90deg): 599.96 lm

%lum = 54.8%
%lamp = 54.8%

Conical surface Flux(120deg): 875.54 lm

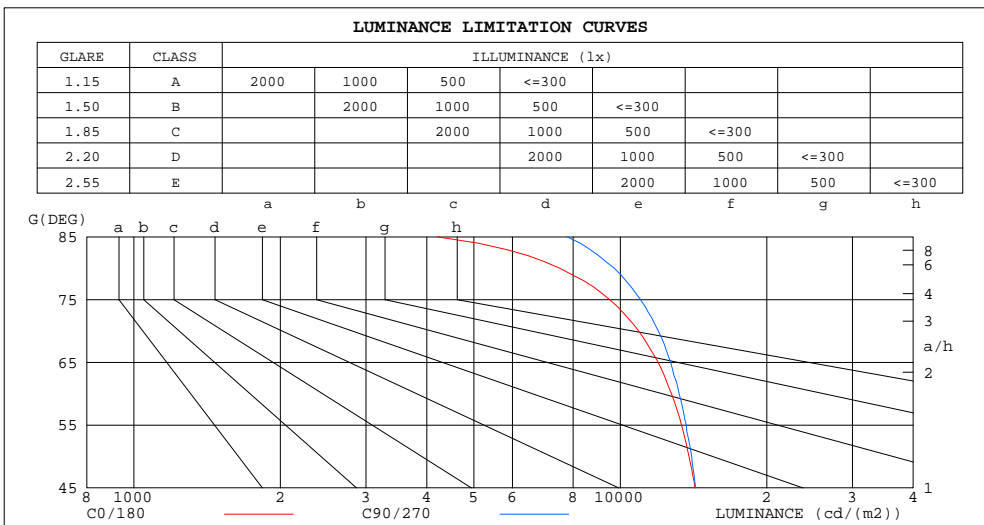
%lum = 80.0%
%lamp = 80.0%

C Range: 0 - 360DEG
C Interval: 22.5DEG
Test Speed: HIGH
Temperature:24.6DEG
Operators:Evan
Test Date:2023-02-21

γ Range: 0 - 180DEG
γ Interval: 1.0DEG
Test System:EVERFINE GO-R5000_V2 SYSTEM V2.0.351
Humidity:51%
Test Distance:2.532m [K=1.0000]
Remarks:

LUMINANCE LIMITATION CURVES

| | | |
|---|-----------|---------------------|
| Test:U:120.0V I:0.1382A P:15.60W PF:0.9407 Lamp Flux:1094.82x1 lm | | |
| NAME: LED luminaire | TYPE:N/A | WEIGHT:N/A |
| SPEC.:ASD-MPS-7D15CC-BK 4000K | DIM.: N/A | SERIAL No.:N/A |
| MFR.: ASD LIGHTING CORP | SUR.:N/A | Shielding Angle:N/A |



| LUMINANCE cd/(m2) | | |
|-------------------|--------|---------|
| G(DEG) | C0/180 | C90/270 |
| 85 | 4203 | 7769 |
| 80 | 7502 | 9717 |
| 75 | 9509 | 10995 |
| 70 | 10903 | 11964 |
| 65 | 11962 | 12687 |
| 60 | 12737 | 13209 |
| 55 | 13361 | 13660 |
| 50 | 13842 | 14026 |
| 45 | 14236 | 14291 |

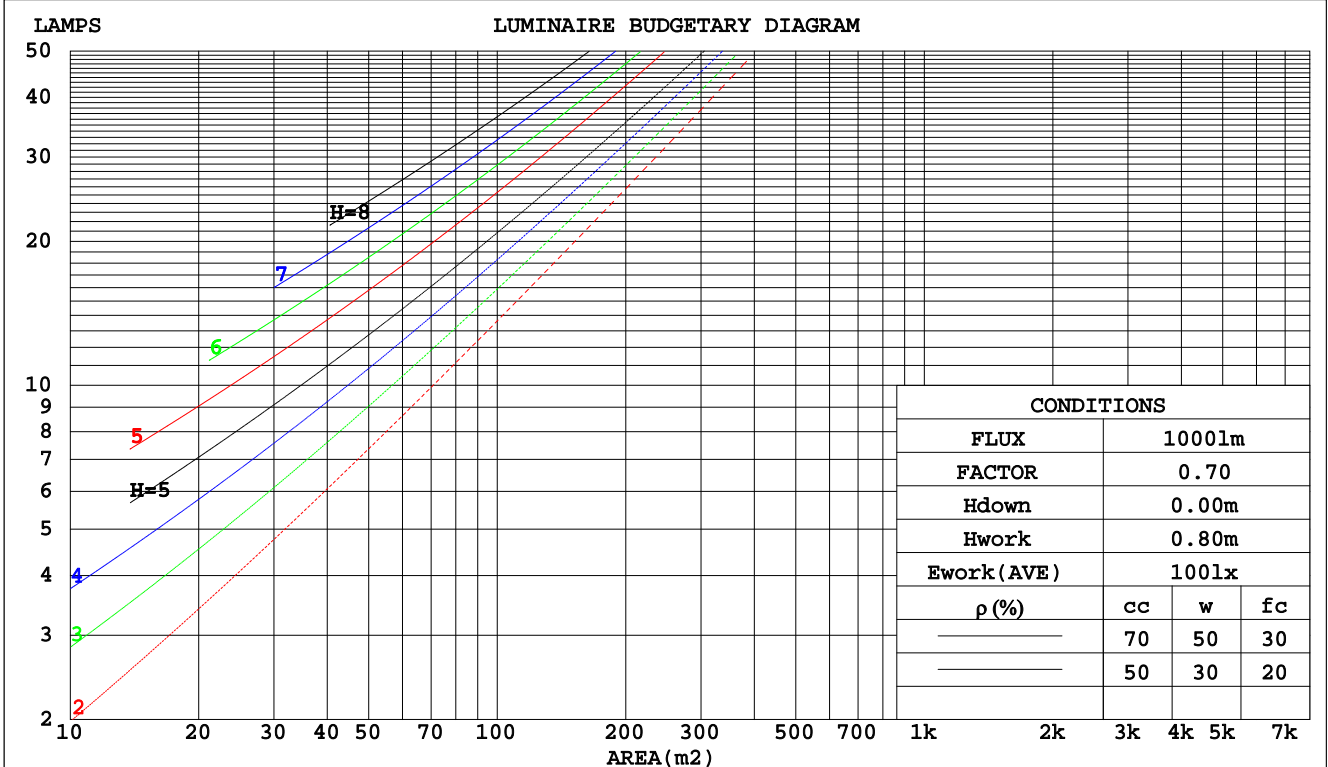
C Range: 0 - 360DEG
 C Interval: 22.5DEG
 Test Speed: HIGH
 Temperature:24.6DEG
 Operators:Evan
 Test Date:2023-02-21

γ Range: 0 - 180DEG
 γ Interval: 1.0DEG
 Test System:EVERFINE GO-R5000_V2 SYSTEM V2.0.351
 Humidity:51%
 Test Distance:2.532m [K=1.0000]
 Remarks:

CU AND LUMINAIRE BUDGETARY ESTIMATE DIAGRAM

| | | |
|---|-----------|---------------------|
| Test:U:120.0V I:0.1382A P:15.60W PF:0.9407 Lamp Flux:1094.82x1 lm | | |
| NAME: LED luminaire | TYPE:N/A | WEIGHT:N/A |
| SPEC.:ASD-MPS-7D15CC-BK 4000K | DIM.: N/A | SERIAL No.:N/A |
| MFR.:ASD LIGHTING CORP | SUR.:N/A | Shielding Angle:N/A |

| pcc | 80% | | | 70% | | | 50% | | | 30% | | | 10% | | | 0 |
|------|--|------|------|------|------|------|------|------|------|------|------|------|------|------|------|-----|
| | 50% | 30% | 10% | 50% | 30% | 10% | 50% | 30% | 10% | 50% | 30% | 10% | 50% | 30% | 10% | 0 |
| pw | | | | | | | | | | | | | | | | 0 |
| pfc | 20% | | | 20% | | | 20% | | | 20% | | | 20% | | | 0 |
| RCR | RCR:Room Cavity Ratio Coefficients of Utilization(CU) | | | | | | | | | | | | | | | |
| 0.0 | 1.19 | 1.19 | 1.19 | 1.16 | 1.16 | 1.16 | 1.11 | 1.11 | 1.11 | 1.06 | 1.06 | 1.06 | 1.02 | 1.02 | 1.02 | .00 |
| 1.0 | 1.04 | 1.00 | .96 | 1.02 | .98 | .95 | .98 | .95 | .92 | .94 | .91 | .89 | .90 | .88 | .86 | .84 |
| 2.0 | .91 | .84 | .79 | .89 | .83 | .78 | .86 | .80 | .76 | .82 | .78 | .74 | .79 | .76 | .72 | .70 |
| 3.0 | .80 | .72 | .65 | .78 | .71 | .65 | .75 | .69 | .64 | .73 | .67 | .63 | .70 | .65 | .61 | .59 |
| 4.0 | .71 | .62 | .55 | .70 | .61 | .55 | .67 | .60 | .54 | .65 | .59 | .54 | .63 | .57 | .53 | .51 |
| 5.0 | .63 | .54 | .48 | .62 | .54 | .48 | .60 | .53 | .47 | .58 | .52 | .46 | .56 | .51 | .46 | .44 |
| 6.0 | .57 | .48 | .42 | .56 | .48 | .42 | .54 | .47 | .41 | .53 | .46 | .41 | .51 | .45 | .40 | .38 |
| 7.0 | .52 | .43 | .37 | .51 | .43 | .37 | .49 | .42 | .36 | .48 | .41 | .36 | .47 | .40 | .36 | .34 |
| 8.0 | .47 | .39 | .33 | .47 | .38 | .33 | .45 | .38 | .33 | .44 | .37 | .32 | .43 | .37 | .32 | .30 |
| 9.0 | .43 | .35 | .30 | .43 | .35 | .30 | .42 | .34 | .29 | .40 | .34 | .29 | .39 | .33 | .29 | .27 |
| 10.0 | .40 | .32 | .27 | .39 | .32 | .27 | .38 | .31 | .27 | .38 | .31 | .27 | .37 | .31 | .26 | .25 |



C Range: 0 - 360DEG
 C Interval: 22.5DEG
 Test Speed: HIGH
 Temperature:24.6DEG
 Operators:Evan
 Test Date:2023-02-21

γ Range: 0 - 180DEG
 γ Interval: 1.0DEG
 Test System:EVERFINE GO-R5000_V2 SYSTEM V2.0.351
 Humidity:51%
 Test Distance:2.532m [K=1.0000]
 Remarks:

WEC AND CCEC

| | | |
|---|-----------|---------------------|
| Test:U:120.0V I:0.1382A P:15.60W PF:0.9407 Lamp Flux:1094.82x1 lm | | |
| NAME: LED luminaire | TYPE:N/A | WEIGHT:N/A |
| SPEC.:ASD-MPS-7D15CC-BK 4000K | DIM.: N/A | SERIAL No.:N/A |
| MFR.:ASD LIGHTING CORP | SUR.:N/A | Shielding Angle:N/A |

| ρcc | 80% | | | 70% | | | 50% | | | 30% | | | 10% | | | 0 |
|------|-----------------------|------|------|------|------|------|---------------------------------|------|------|------|------|------|------|------|------|---|
| ρw | 50% | 30% | 10% | 50% | 30% | 10% | 50% | 30% | 10% | 50% | 30% | 10% | 50% | 30% | 10% | 0 |
| ρfc | 20% | | | 20% | | | 20% | | | 20% | | | 20% | | | 0 |
| RCR | RCR:Room Cavity Ratio | | | | | | Wall Exitance Coefficients(WEC) | | | | | | | | | |
| 0.0 | | | | | | | | | | | | | | | | |
| 1.0 | .301 | .171 | .054 | .294 | .168 | .053 | .281 | .161 | .051 | .269 | .155 | .050 | .257 | .149 | .048 | |
| 2.0 | .286 | .157 | .048 | .280 | .154 | .047 | .268 | .149 | .046 | .257 | .144 | .045 | .247 | .140 | .044 | |
| 3.0 | .266 | .141 | .042 | .260 | .139 | .042 | .250 | .135 | .041 | .240 | .132 | .040 | .232 | .128 | .040 | |
| 4.0 | .246 | .128 | .038 | .241 | .126 | .037 | .232 | .123 | .037 | .223 | .120 | .036 | .216 | .117 | .036 | |
| 5.0 | .228 | .116 | .034 | .224 | .115 | .033 | .215 | .112 | .033 | .208 | .110 | .033 | .201 | .107 | .032 | |
| 6.0 | .212 | .106 | .030 | .208 | .105 | .030 | .201 | .103 | .030 | .194 | .101 | .030 | .187 | .099 | .029 | |
| 7.0 | .197 | .098 | .028 | .194 | .097 | .028 | .187 | .095 | .027 | .181 | .093 | .027 | .176 | .091 | .027 | |
| 8.0 | .184 | .090 | .025 | .181 | .089 | .025 | .176 | .088 | .025 | .170 | .086 | .025 | .165 | .085 | .025 | |
| 9.0 | .173 | .084 | .023 | .170 | .083 | .023 | .165 | .082 | .023 | .160 | .080 | .023 | .155 | .079 | .023 | |
| 10.0 | .163 | .078 | .022 | .160 | .077 | .022 | .155 | .076 | .021 | .151 | .075 | .021 | .147 | .074 | .021 | |

| ρcc | 80% | | | 70% | | | 50% | | | 30% | | | 10% | | | 0 |
|------|-----------------------|------|------|------|------|------|--|------|------|------|------|------|------|------|------|---|
| ρw | 50% | 30% | 10% | 50% | 30% | 10% | 50% | 30% | 10% | 50% | 30% | 10% | 50% | 30% | 10% | 0 |
| ρfc | 20% | | | 20% | | | 20% | | | 20% | | | 20% | | | 0 |
| RCR | RCR:Room Cavity Ratio | | | | | | Ceiling Cavity Exitance Coefficients(CCEC) | | | | | | | | | |
| 0.0 | .191 | .191 | .191 | .163 | .163 | .163 | .112 | .112 | .112 | .064 | .064 | .064 | .020 | .020 | .020 | |
| 1.0 | .181 | .157 | .136 | .154 | .135 | .117 | .106 | .093 | .081 | .061 | .054 | .047 | .019 | .017 | .015 | |
| 2.0 | .172 | .133 | .100 | .148 | .114 | .086 | .101 | .079 | .060 | .058 | .046 | .035 | .019 | .015 | .011 | |
| 3.0 | .165 | .115 | .076 | .141 | .099 | .066 | .097 | .069 | .046 | .056 | .040 | .027 | .018 | .013 | .009 | |
| 4.0 | .157 | .102 | .060 | .135 | .088 | .052 | .093 | .061 | .036 | .054 | .036 | .022 | .017 | .012 | .007 | |
| 5.0 | .150 | .091 | .048 | .128 | .079 | .042 | .088 | .055 | .030 | .051 | .032 | .018 | .017 | .011 | .006 | |
| 6.0 | .142 | .083 | .040 | .122 | .072 | .035 | .084 | .050 | .025 | .049 | .030 | .015 | .016 | .010 | .005 | |
| 7.0 | .136 | .076 | .034 | .117 | .066 | .030 | .081 | .046 | .021 | .047 | .027 | .013 | .015 | .009 | .004 | |
| 8.0 | .129 | .070 | .030 | .111 | .061 | .026 | .077 | .043 | .018 | .045 | .025 | .011 | .014 | .008 | .004 | |
| 9.0 | .123 | .065 | .026 | .106 | .057 | .023 | .074 | .040 | .016 | .043 | .024 | .010 | .014 | .008 | .003 | |
| 10.0 | .118 | .061 | .023 | .101 | .053 | .020 | .070 | .037 | .014 | .041 | .022 | .009 | .013 | .007 | .003 | |

C Range: 0 - 360DEG
 C Interval: 22.5DEG
 Test Speed: HIGH
 Temperature:24.6DEG
 Operators:Evan
 Test Date:2023-02-21

γ Range: 0 - 180DEG
 γ Interval: 1.0DEG
 Test System:EVERFINE GO-R5000_V2 SYSTEM V2.0.351
 Humidity:51%
 Test Distance:2.532m [K=1.0000]
 Remarks:

UGR(Unified Glare Rating) Table

| | | | | | | | | | | |
|---|------------------|------|------|------|-----------|----------------|------|---------------------|------|------|
| Test:U:120.0V I:0.1382A P:15.60W PF:0.9407 Lamp Flux:1094.82x1 lm | | | | | | | | | | |
| NAME: LED luminaire | | | | | TYPE:N/A | | | WEIGHT:N/A | | |
| SPEC.:ASD-MPS-7D15CC-BK 4000K | | | | | DIM.: N/A | | | SERIAL No.:N/A | | |
| MFR.: ASD LIGHTING CORP | | | | | SUR.:N/A | | | Shielding Angle:N/A | | |
| ceiling/cavity | 0.7 | 0.7 | 0.5 | 0.5 | 0.3 | 0.7 | 0.7 | 0.5 | 0.5 | 0.3 |
| walls | 0.5 | 0.3 | 0.5 | 0.3 | 0.3 | 0.5 | 0.3 | 0.5 | 0.3 | 0.3 |
| working plane | 0.2 | 0.2 | 0.2 | 0.2 | 0.2 | 0.2 | 0.2 | 0.2 | 0.2 | 0.2 |
| Room dimensions | Viewed crosswise | | | | | Viewed endwise | | | | |
| x = 2H y = 2H | 21.8 | 23.3 | 22.1 | 23.5 | 23.8 | 22.0 | 23.5 | 22.2 | 23.7 | 23.9 |
| 3H | 23.2 | 24.6 | 23.5 | 24.8 | 25.1 | 23.5 | 24.9 | 23.8 | 25.1 | 25.3 |
| 4H | 23.7 | 25.0 | 24.0 | 25.3 | 25.5 | 24.1 | 25.4 | 24.4 | 25.6 | 25.9 |
| 6H | 24.0 | 25.2 | 24.3 | 25.5 | 25.8 | 24.5 | 25.7 | 24.8 | 26.0 | 26.3 |
| 8H | 24.0 | 25.2 | 24.4 | 25.5 | 25.8 | 24.6 | 25.8 | 24.9 | 26.1 | 26.4 |
| 12H | 24.0 | 25.2 | 24.4 | 25.5 | 25.8 | 24.6 | 25.8 | 25.0 | 26.1 | 26.4 |
| 4H 2H | 22.4 | 23.8 | 22.8 | 24.0 | 24.3 | 22.5 | 23.9 | 22.9 | 24.1 | 24.4 |
| 3H | 24.0 | 25.1 | 24.3 | 25.4 | 25.7 | 24.2 | 25.4 | 24.6 | 25.7 | 26.0 |
| 4H | 24.6 | 25.6 | 24.9 | 25.9 | 26.3 | 24.9 | 26.0 | 25.3 | 26.3 | 26.6 |
| 6H | 25.0 | 25.9 | 25.4 | 26.2 | 26.6 | 25.4 | 26.4 | 25.8 | 26.7 | 27.1 |
| 8H | 25.0 | 25.9 | 25.5 | 26.3 | 26.7 | 25.6 | 26.5 | 26.0 | 26.9 | 27.2 |
| 12H | 25.1 | 25.9 | 25.5 | 26.3 | 26.7 | 25.7 | 26.5 | 26.1 | 26.9 | 27.3 |
| 8H 4H | 24.8 | 25.7 | 25.2 | 26.0 | 26.4 | 25.1 | 26.0 | 25.5 | 26.4 | 26.8 |
| 6H | 25.3 | 26.0 | 25.8 | 26.4 | 26.9 | 25.8 | 26.5 | 26.2 | 26.9 | 27.3 |
| 8H | 25.5 | 26.1 | 25.9 | 26.5 | 27.0 | 26.0 | 26.7 | 26.5 | 27.1 | 27.5 |
| 12H | 25.5 | 26.1 | 26.0 | 26.5 | 27.0 | 26.2 | 26.7 | 26.7 | 27.2 | 27.7 |
| 12H 4H | 24.8 | 25.6 | 25.2 | 26.0 | 26.4 | 25.1 | 25.9 | 25.6 | 26.3 | 26.7 |
| 6H | 25.4 | 26.0 | 25.8 | 26.4 | 26.9 | 25.8 | 26.4 | 26.3 | 26.9 | 27.3 |
| 8H | 25.5 | 26.1 | 26.0 | 26.5 | 27.0 | 26.1 | 26.6 | 26.6 | 27.1 | 27.5 |
| Variations with the observer position at spacings: | | | | | | | | | | |
| S = 1.0H | + 0.2 / - 0.2 | | | | | + 0.2 / - 0.2 | | | | |
| 1.5H | + 0.2 / - 0.3 | | | | | + 0.2 / - 0.3 | | | | |
| 2.0H | + 0.2 / - 0.3 | | | | | + 0.2 / - 0.3 | | | | |

CIE Pub.117 Corrected 1095 lm Total Lamp Luminous Flux.(8log(F/F0) = 0.3)

C Range: 0 - 360DEG
 C Interval: 22.5DEG
 Test Speed: HIGH
 Temperature:24.6DEG
 Operators:Evan
 Test Date:2023-02-21

γ Range: 0 - 180DEG
 γ Interval: 1.0DEG
 Test System:EVERFINE GO-R5000_V2 SYSTEM V2.0.351
 Humidity:51%
 Test Distance:2.532m [K=1.0000]
 Remarks:

UTILIZATION FACTORS TABLE

| | | |
|---|-----------|---------------------|
| Test:U:120.0V I:0.1382A P:15.60W PF:0.9407 Lamp Flux:1094.82x1 lm | | |
| NAME: LED luminaire | TYPE:N/A | WEIGHT:N/A |
| SPEC.:ASD-MPS-7D15CC-BK 4000K | DIM.: N/A | SERIAL No.:N/A |
| MFR.:ASD LIGHTING CORP | SUR.:N/A | Shielding Angle:N/A |

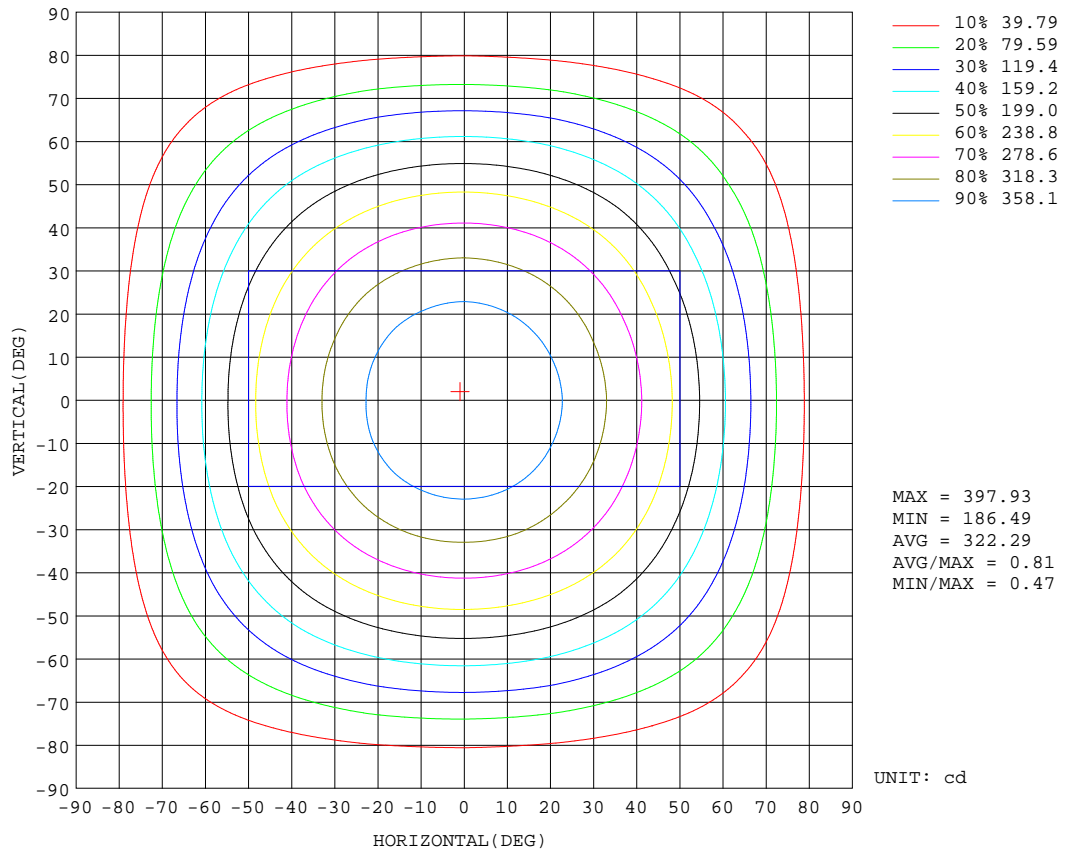
| REFLECTANCE | | | | | | | | | | |
|----------------------------------|---|-----|-----------|-----|-----|-----|---------------|-----|-----|--------|
| Ceiling | 0.8 | 0.8 | 0.8 | 0.7 | 0.7 | 0.7 | 0.5 | 0.5 | 0.5 | 0 |
| Walls | 0.7 | 0.5 | 0.3 | 0.7 | 0.5 | 0.3 | 0.7 | 0.5 | 0.3 | 0 |
| Working plane | 0.2 | 0.2 | 0.2 | 0.2 | 0.2 | 0.2 | 0.2 | 0.2 | 0.2 | 0 |
| ROOM INDEX | UTILIZATION FACTORS(PERCENT) $k(RI) \times RCR = 5$ | | | | | | | | | |
| k = 0.60 | 58 | 47 | 40 | 57 | 46 | 39 | 56 | 46 | 39 | 33 |
| 0.80 | 68 | 57 | 49 | 67 | 56 | 49 | 65 | 55 | 49 | 42 |
| 1.00 | 77 | 66 | 58 | 75 | 65 | 58 | 73 | 66 | 58 | 51 |
| 1.25 | 84 | 73 | 66 | 82 | 73 | 66 | 80 | 71 | 65 | 58 |
| 1.50 | 89 | 79 | 72 | 87 | 78 | 72 | 84 | 76 | 70 | 63 |
| 2.00 | 95 | 87 | 81 | 94 | 86 | 80 | 90 | 84 | 78 | 71 |
| 2.50 | 99 | 92 | 86 | 97 | 90 | 85 | 93 | 88 | 83 | 75 |
| 3.00 | 103 | 96 | 91 | 100 | 94 | 89 | 96 | 91 | 87 | 79 |
| 4.00 | 107 | 101 | 97 | 104 | 99 | 95 | 100 | 96 | 92 | 84 |
| 5.00 | 109 | 104 | 100 | 107 | 102 | 99 | 102 | 99 | 96 | 87 |
| ROOM INDEX | UF(total) | | | | | | | | | Direct |
| According to DIN EN 13032-2 2004 | | | Suspended | | | | SHRNOM = 1.25 | | | |

C Range: 0 - 360DEG
 C Interval: 22.5DEG
 Test Speed: HIGH
 Temperature:24.6DEG
 Operators:Evan
 Test Date:2023-02-21

γ Range: 0 - 180DEG
 γ Interval: 1.0DEG
 Test System:EVERFINE GO-R5000_V2 SYSTEM V2.0.351
 Humidity:51%
 Test Distance:2.532m [K=1.0000]
 Remarks:

ISOCANDELA DIAGRAM

| | | |
|---|-----------|---------------------|
| Test:U:120.0V I:0.1382A P:15.60W PF:0.9407 Lamp Flux:1094.82x1 lm | | |
| NAME: LED luminaire | TYPE:N/A | WEIGHT:N/A |
| SPEC.:ASD-MPS-7D15CC-BK 4000K | DIM.: N/A | SERIAL No.:N/A |
| MFR.: ASD LIGHTING CORP | SUR.:N/A | Shielding Angle:N/A |

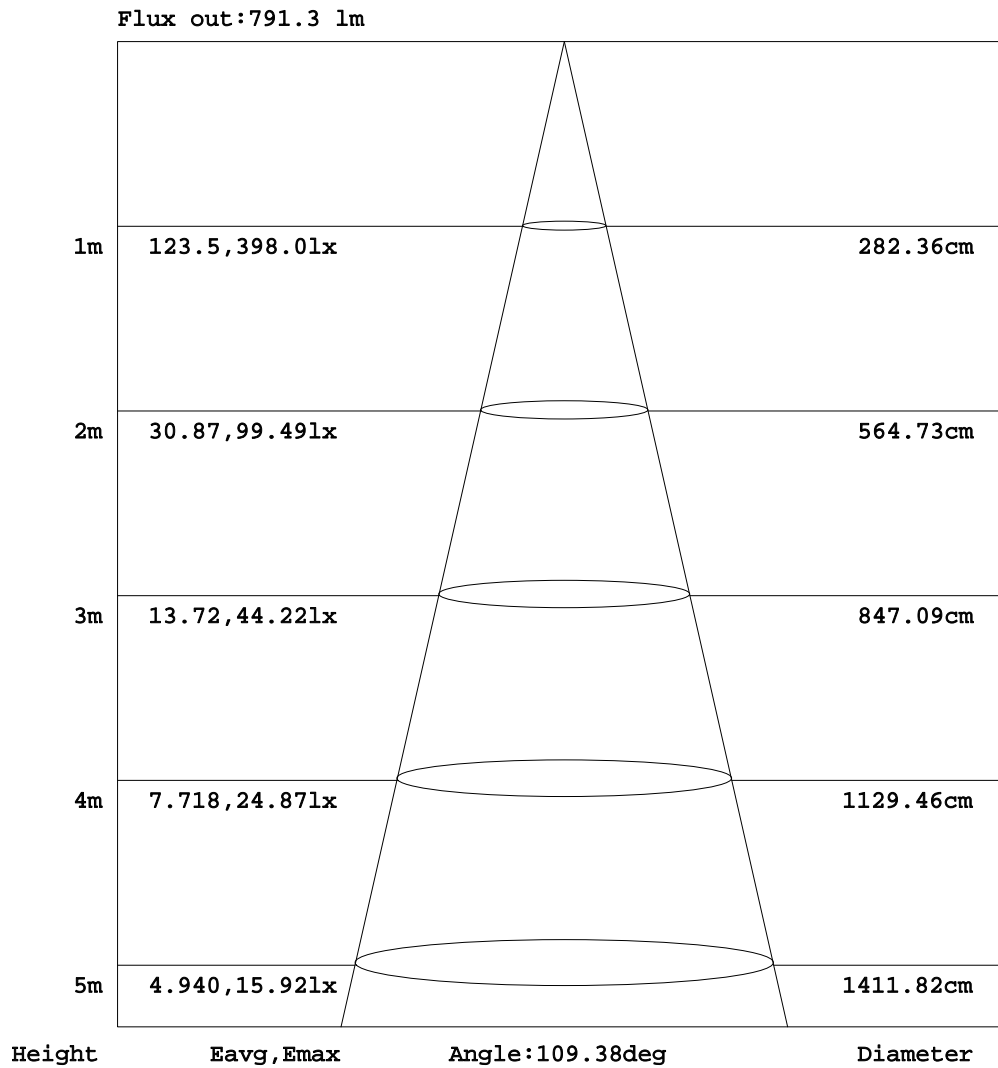


C Range: 0 - 360DEG
 C Interval: 22.5DEG
 Test Speed: HIGH
 Temperature:24.6DEG
 Operators:Evan
 Test Date:2023-02-21

γ Range: 0 - 180DEG
 γ Interval: 1.0DEG
 Test System:EVERFINE GO-R5000_V2 SYSTEM V2.0.351
 Humidity:51%
 Test Distance:2.532m [K=1.0000]
 Remarks:

AAI Figure

| | | |
|---|-----------|---------------------|
| Test:U:120.0V I:0.1382A P:15.60W PF:0.9407 Lamp Flux:1094.82x1 lm | | |
| NAME: LED luminaire | TYPE:N/A | WEIGHT:N/A |
| SPEC.:ASD-MPS-7D15CC-BK 4000K | DIM.: N/A | SERIAL No.:N/A |
| MFR.: ASD LIGHTING CORP | SUR.:N/A | Shielding Angle:N/A |



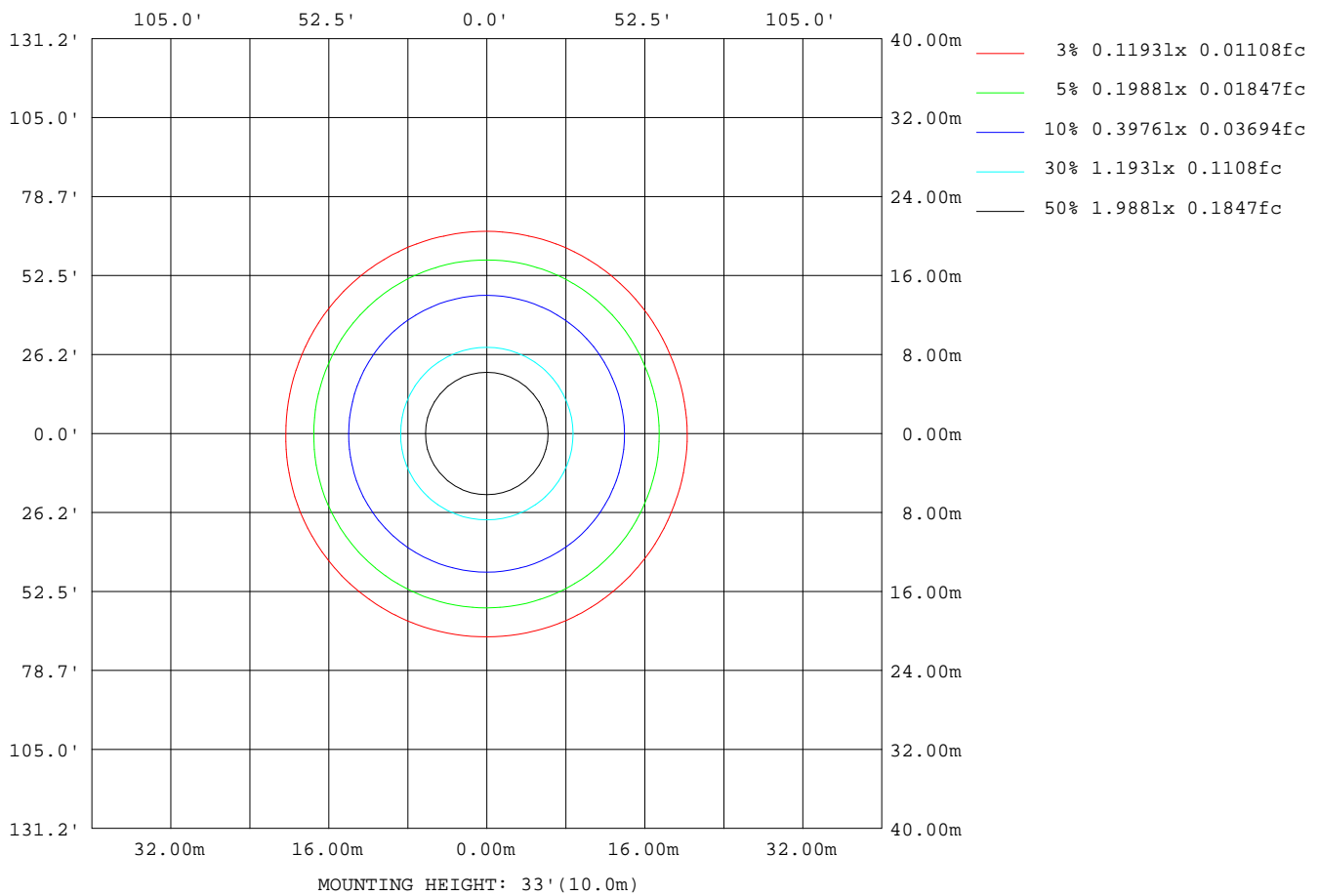
Note:The Curves indicate the illuminated area and the average illumination when the luminaire is at different distance.

C Range: 0 - 360DEG
 C Interval: 22.5DEG
 Test Speed: HIGH
 Temperature:24.6DEG
 Operators:Evan
 Test Date:2023-02-21

γ Range: 0 - 180DEG
 γ Interval: 1.0DEG
 Test System:EVERFINE GO-R5000_V2 SYSTEM V2.0.351
 Humidity:51%
 Test Distance:2.532m [K=1.0000]
 Remarks:

ISOLUX DIAGRAM

| | | |
|---|-----------|---------------------|
| Test:U:120.0V I:0.1382A P:15.60W PF:0.9407 Lamp Flux:1094.82x1 lm | | |
| NAME: LED luminaire | TYPE:N/A | WEIGHT:N/A |
| SPEC.:ASD-MPS-7D15CC-BK 4000K | DIM.: N/A | SERIAL No.:N/A |
| MFR.: ASD LIGHTING CORP | SUR.:N/A | Shielding Angle:N/A |



C Range: 0 - 360DEG
 C Interval: 22.5DEG
 Test Speed: HIGH
 Temperature:24.6DEG
 Operators:Evan
 Test Date:2023-02-21

γ Range: 0 - 180DEG
 γ Interval: 1.0DEG
 Test System:EVERFINE GO-R5000_V2 SYSTEM V2.0.351
 Humidity:51%
 Test Distance:2.532m [K=1.0000]
 Remarks:

LED Avg.L Report

| | | |
|---|-----------|---------------------|
| Test:U:120.0V I:0.1382A P:15.60W PF:0.9407 Lamp Flux:1094.82x1 lm | | |
| NAME: LED luminaire | TYPE:N/A | WEIGHT:N/A |
| SPEC.:ASD-MPS-7D15CC-BK 4000K | DIM.: N/A | SERIAL No.:N/A |
| MFR.: ASD LIGHTING CORP | SUR.:N/A | Shielding Angle:N/A |

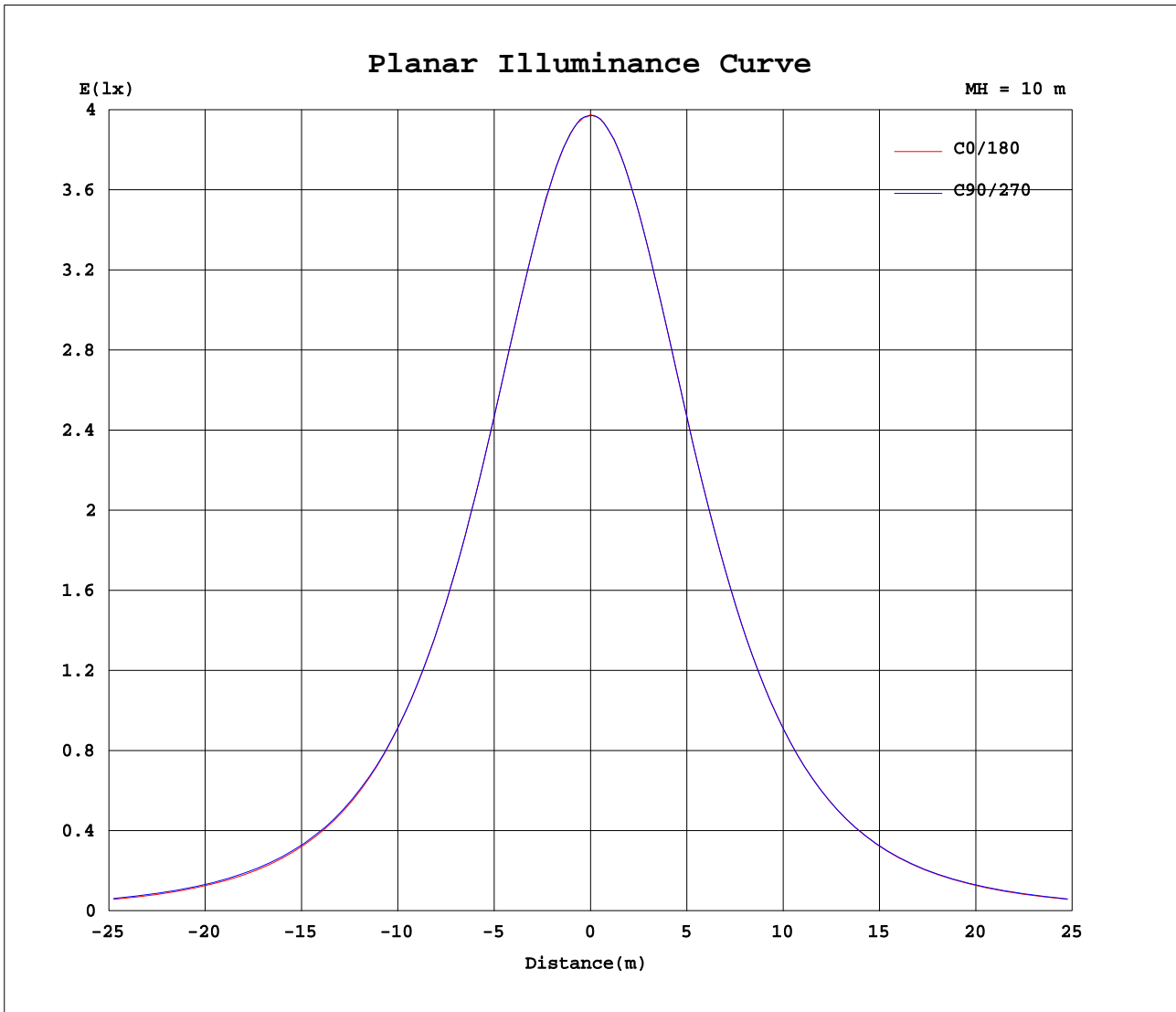
| AvgL | cd/m2 |
|----------------|-------|
| L_0~180(65)av | 12015 |
| L_0~180(75)av | 9590 |
| L_0~180(85)av | 4522 |
| L_90~270(65)av | 12571 |
| L_90~270(75)av | 10668 |
| L_90~270(85)av | 7041 |
| L_45(65)av | 12303 |
| L_45(75)av | 10078 |
| L_45(85)av | 5336 |

Standard: GB/T 29293-2012

C Range: 0 - 360DEG
 C Interval: 22.5DEG
 Test Speed: HIGH
 Temperature:24.6DEG
 Operators:Evan
 Test Date:2023-02-21

γ Range: 0 - 180DEG
 γ Interval: 1.0DEG
 Test System:EVERFINE GO-R5000_V2 SYSTEM V2.0.351
 Humidity:51%
 Test Distance:2.532m [K=1.0000]
 Remarks:

Planar Illuminance Curve



C Range: 0 - 360DEG
 C Interval: 22.5DEG
 Test Speed: HIGH
 Temperature: 24.6DEG
 Operators: Evan
 Test Date: 2023-02-21

γ Range: 0 - 180DEG
 γ Interval: 1.0DEG
 Test System: EVERFINE GO-R5000_V2 SYSTEM V2.0.351
 Humidity: 51%
 Test Distance: 2.532m [K=1.0000]
 Remarks:

LUMINOUS DISTRIBUTION INTENSITY DATA

| | | |
|---|-----------|---------------------|
| Test:U:120.0V I:0.1382A P:15.60W PF:0.9407 Lamp Flux:1094.82x1 lm | | |
| NAME: LED luminaire | TYPE:N/A | WEIGHT:N/A |
| SPEC.:ASD-MPS-7D15CC-BK 4000K | DIM.: N/A | SERIAL No.:N/A |
| MFR.: ASD LIGHTING CORP | SUR.:N/A | Shielding Angle:N/A |

Table--1

UNIT: cd

| C(DEG) γ (DEG) | 0 | 22.5 | 45 | 67.5 | 90 | 112.5 | 135 | 157.5 | 180 | 202.5 | 225 | 247.5 | 270 | 292.5 | 315 | 337.5 | | | |
|--------------------|------|------|------|------|------|-------|------|-------|------|-------|------|-------|------|-------|------|-------|-----|--|--|
| 0 | 398 | 398 | 398 | 398 | 398 | 398 | 398 | 398 | 398 | 398 | 398 | 398 | 398 | 398 | 398 | 398 | | | |
| 5 | 395 | 395 | 395 | 396 | 396 | 396 | 395 | 396 | 395 | 395 | 395 | 395 | 396 | 396 | 395 | 395 | | | |
| 10 | 390 | 390 | 390 | 390 | 390 | 390 | 390 | 390 | 389 | 390 | 390 | 390 | 390 | 390 | 389 | 389 | | | |
| 15 | 380 | 380 | 380 | 380 | 381 | 381 | 380 | 381 | 380 | 380 | 380 | 381 | 381 | 380 | 379 | 379 | | | |
| 20 | 367 | 367 | 367 | 367 | 368 | 368 | 367 | 368 | 367 | 367 | 367 | 368 | 367 | 367 | 366 | 366 | | | |
| 25 | 351 | 350 | 350 | 350 | 351 | 351 | 351 | 352 | 350 | 351 | 351 | 351 | 351 | 350 | 349 | 349 | | | |
| 30 | 331 | 331 | 331 | 331 | 332 | 332 | 332 | 333 | 331 | 331 | 331 | 331 | 331 | 331 | 330 | 330 | | | |
| 35 | 309 | 309 | 309 | 309 | 310 | 310 | 310 | 310 | 309 | 309 | 309 | 309 | 309 | 309 | 308 | 308 | 307 | | |
| 40 | 285 | 284 | 285 | 285 | 286 | 285 | 286 | 286 | 284 | 284 | 284 | 284 | 285 | 284 | 283 | 282 | | | |
| 45 | 258 | 258 | 258 | 258 | 259 | 259 | 259 | 259 | 258 | 258 | 258 | 258 | 258 | 257 | 256 | 256 | | | |
| 50 | 228 | 229 | 229 | 230 | 231 | 231 | 231 | 231 | 229 | 229 | 229 | 229 | 229 | 228 | 227 | 226 | | | |
| 55 | 196 | 197 | 199 | 200 | 201 | 201 | 201 | 201 | 197 | 198 | 199 | 199 | 198 | 198 | 197 | 194 | | | |
| 60 | 163 | 164 | 167 | 168 | 169 | 170 | 170 | 168 | 165 | 165 | 167 | 167 | 167 | 166 | 164 | 161 | | | |
| 65 | 129 | 130 | 133 | 137 | 137 | 138 | 137 | 134 | 131 | 131 | 133 | 135 | 135 | 133 | 130 | 127 | | | |
| 70 | 95.5 | 96.7 | 99.8 | 104 | 105 | 105 | 103 | 101 | 96.4 | 96.8 | 98.6 | 101 | 100 | 99.7 | 95.6 | 92.8 | | | |
| 75 | 63.0 | 64.2 | 67.4 | 71.4 | 72.9 | 73.2 | 70.5 | 68.1 | 64.1 | 64.3 | 66.0 | 68.4 | 68.4 | 66.9 | 63.2 | 60.7 | | | |
| 80 | 33.3 | 34.5 | 36.9 | 41.0 | 43.3 | 42.7 | 39.9 | 38.0 | 34.7 | 35.0 | 36.0 | 38.2 | 39.1 | 36.9 | 33.6 | 31.7 | | | |
| 85 | 9.38 | 10.2 | 12.1 | 14.9 | 17.4 | 16.3 | 14.3 | 12.9 | 10.8 | 10.7 | 11.5 | 13.0 | 14.1 | 12.1 | 9.77 | 8.04 | | | |
| 90 | 0.07 | 0.07 | 0.07 | 0.07 | 0.15 | 0.14 | 0.09 | 0.11 | 0.02 | 0.02 | 0.02 | 0.02 | 0.02 | 0.02 | 0.02 | 0.02 | | | |
| 95 | 0.07 | 0.08 | 0.08 | 0.08 | 0.08 | 0.08 | 0.07 | 0.07 | 0.02 | 0.02 | 0.03 | 0.03 | 0.03 | 0.03 | 0.03 | 0.02 | | | |
| 100 | 0.09 | 0.09 | 0.11 | 0.10 | 0.10 | 0.11 | 0.11 | 0.09 | 0.03 | 0.04 | 0.04 | 0.05 | 0.04 | 0.05 | 0.05 | 0.04 | | | |
| 105 | 0.10 | 0.10 | 0.11 | 0.11 | 0.11 | 0.12 | 0.12 | 0.11 | 0.05 | 0.05 | 0.06 | 0.06 | 0.05 | 0.06 | 0.06 | 0.05 | | | |
| 110 | 0.11 | 0.12 | 0.12 | 0.12 | 0.12 | 0.12 | 0.13 | 0.12 | 0.07 | 0.07 | 0.07 | 0.07 | 0.07 | 0.08 | 0.07 | 0.07 | | | |
| 115 | 0.13 | 0.13 | 0.13 | 0.13 | 0.13 | 0.14 | 0.14 | 0.15 | 0.09 | 0.08 | 0.09 | 0.09 | 0.08 | 0.09 | 0.09 | 0.09 | | | |
| 120 | 0.15 | 0.16 | 0.15 | 0.16 | 0.16 | 0.16 | 0.16 | 0.18 | 0.10 | 0.11 | 0.11 | 0.10 | 0.10 | 0.10 | 0.11 | 0.11 | | | |
| 125 | 0.19 | 0.18 | 0.19 | 0.19 | 0.19 | 0.19 | 0.20 | 0.19 | 0.14 | 0.14 | 0.13 | 0.13 | 0.12 | 0.13 | 0.13 | 0.13 | | | |
| 130 | 0.23 | 0.23 | 0.23 | 0.23 | 0.23 | 0.24 | 0.25 | 0.21 | 0.17 | 0.16 | 0.16 | 0.15 | 0.14 | 0.16 | 0.15 | 0.16 | | | |
| 135 | 0.25 | 0.27 | 0.29 | 0.29 | 0.30 | 0.30 | 0.30 | 0.28 | 0.18 | 0.18 | 0.19 | 0.18 | 0.17 | 0.18 | 0.18 | 0.19 | | | |
| 140 | 0.35 | 0.36 | 0.36 | 0.37 | 0.38 | 0.38 | 0.37 | 0.35 | 0.21 | 0.19 | 0.21 | 0.21 | 0.20 | 0.20 | 0.21 | 0.20 | | | |
| 145 | 0.43 | 0.45 | 0.44 | 0.47 | 0.48 | 0.49 | 0.43 | 0.44 | 0.23 | 0.23 | 0.23 | 0.24 | 0.24 | 0.23 | 0.23 | 0.22 | | | |
| 150 | 0.49 | 0.52 | 0.51 | 0.52 | 0.54 | 0.53 | 0.53 | 0.52 | 0.25 | 0.25 | 0.25 | 0.25 | 0.26 | 0.24 | 0.23 | 0.24 | | | |
| 155 | 0.53 | 0.56 | 0.58 | 0.61 | 0.60 | 0.60 | 0.59 | 0.60 | 0.29 | 0.28 | 0.28 | 0.28 | 0.29 | 0.29 | 0.26 | 0.29 | | | |
| 160 | 0.61 | 0.62 | 0.63 | 0.66 | 0.65 | 0.64 | 0.62 | 0.62 | 0.31 | 0.31 | 0.30 | 0.28 | 0.31 | 0.31 | 0.29 | 0.33 | | | |
| 165 | 0.61 | 0.61 | 0.64 | 0.65 | 0.67 | 0.64 | 0.63 | 0.59 | 0.34 | 0.34 | 0.30 | 0.33 | 0.33 | 0.33 | 0.35 | 0.37 | | | |
| 170 | 0.59 | 0.58 | 0.58 | 0.58 | 0.60 | 0.58 | 0.57 | 0.58 | 0.37 | 0.36 | 0.34 | 0.35 | 0.36 | 0.38 | 0.38 | 0.40 | | | |
| 175 | 0.57 | 0.57 | 0.55 | 0.52 | 0.52 | 0.52 | 0.53 | 0.54 | 0.41 | 0.41 | 0.41 | 0.40 | 0.41 | 0.41 | 0.43 | 0.45 | | | |
| 180 | 0.45 | 0.45 | 0.44 | 0.42 | 0.43 | 0.45 | 0.47 | 0.48 | 0.47 | 0.47 | 0.46 | 0.44 | 0.43 | 0.44 | 0.45 | 0.47 | | | |

C Range: 0 - 360DEG
 C Interval: 22.5DEG
 Test Speed: HIGH
 Temperature:24.6DEG
 Operators:Evan
 Test Date:2023-02-21

γ Range: 0 - 180DEG
 γ Interval: 1.0DEG
 Test System:EVERFINE GO-R5000_V2 SYSTEM V2.0.351
 Humidity:51%
 Test Distance:2.532m [K=1.0000]
 Remarks: