



LED WALL SCONCE

► **DESIGN** - LED WALL SCONCE has a modern, multipurpose design and a stylish look with efficient lighting. Durable housing resistant to rust and impact provides many years of use. The acrylic lens with a 215° beam angle grants you even light distribution. It is designed to operate on 120V circuits.

► **COLOR SELECTABLE** - You can choose either a 2,700K soft white, 3,000K warm white, 3,500K neutral white, 4,000K cool white, or 5,000K daylight color temperature.

► **DIMMING** - Smooth triac dimming capabilities ranging from 10% to 100% with modern LED dimmers allow you to control the look and feel of your space.

► **APPLICATION** - The LED WALL SCONCE provides bright, yet smooth lighting for your family room, bedroom, hallway, corridor, or any other common area in your living space. This fixture is also Damp Locations rated.

► **ADVANTAGES** - With a lifespan of 54,000 hours, these fixtures are made to last decades under normal operation! ASD provides a 5-year limited warranty along with UL certification to guarantee top quality products and safety!

Catalog number	
Notes	
Type	



Finish: Nickel Black

Model	Size	Watts	Voltage	Dimmable	Lumens	CCT	Finish	Dimensions (LxWxH)
ASD-LWS12-8D10AC-NK	8 inch	10W	120 V	TRIAC	up to 611 lm	5CCT (2,700/3,000/3,500/4,000/5,000 K)	Nickel	4-3/4" x 1-7/8" x 8-11/16"
ASD-LWS12-8D10AC-BK	8 inch	10W	120 V	TRIAC	up to 611 lm	5CCT (2,700/3,000/3,500/4,000/5,000 K)	Black	4-3/4" x 1-7/8" x 8-11/16"
ASD-LWS12-12D12AC-NK	12 inch	12W	120 V	TRIAC	up to 861 lm	5CCT (2,700/3,000/3,500/4,000/5,000 K)	Nickel	4-3/4" x 1-3/4" x 11-7/16"
ASD-LWS12-12D12AC-BK	12 inch	12W	120 V	TRIAC	up to 861 lm	5CCT (2,700/3,000/3,500/4,000/5,000 K)	Black	4-3/4" x 1-3/4" x 11-7/16"
ASD-LWS12-14D24AC-NK	14 inch	24W	120 V	TRIAC	up to 1,848 lm	5CCT (2,700/3,000/3,500/4,000/5,000 K)	Nickel	5-7/8" x 2-5/16" x 14-3/16"
ASD-LWS12-14D24AC-BK	14 inch	24W	120 V	TRIAC	up to 1,848 lm	5CCT (2,700/3,000/3,500/4,000/5,000 K)	Black	5-7/8" x 2-5/16" x 14-3/16"

For detailed luminous flux information please refer to Annex 1.

ORDERING INFORMATION

Model	UPC	Pcs. per carton	Carton size	Carton weight	GTIN 14
ASD-LWS12-8D10AC-NK	810128118088	2	9.5" x 4.7" x 5.5"	3.7 lbs	10810128118085
ASD-LWS12-8D10AC-BK	810128118071	2	9.5" x 4.7" x 5.5"	3.7 lbs	10810128118078
ASD-LWS12-12D12AC-NK	810128115568	2	12.2" x 4.7" x 5.7"	3.8 lbs	10810128115565
ASD-LWS12-12D12AC-BK	810128115551	2	12.2" x 4.7" x 5.7"	3.8 lbs	10810128115558
ASD-LWS12-14D24AC-NK	810128118101	2	15" x 5.5" x 6.7"	7.3 lbs	10810128118108
ASD-LWS12-14D24AC-BK	810128118095	2	15" x 5.5" x 6.7"	7.3 lbs	10810128118092

ANNEX 1

Model	Watts	2,700 K	3,000 K	3,500 K	4,000 K	5,000 K
ASD-LWS12-8D10AC-NK ASD-LWS12-8D10AC-BK	10W	552 lm	576 lm	601 lm	611 lm	610 lm
ASD-LWS12-12D12AC-NK ASD-LWS12-12D12AC-BK	12W	799 lm	834 lm	856 lm	861 lm	855 lm
ASD-LWS12-14D24AC-NK ASD-LWS12-14D24AC-BK	24W	1,624 lm	1,679 lm	1,785 lm	1,848 lm	1,691 lm

For most up-to-date spec sheets please refer to asd-lighting.com



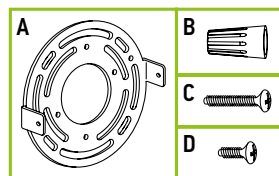
LED WALL SCONCE

PRODUCT SPECIFICATIONS:

Construction & Materials				
Housing	Aluminum			
Lens	Acrylic			
Finish	Nickel, Black			
Weight	for 8-12 inch models: 1.3 lbs (0.6 kg)			
	for 14 inch models: 2.9 lbs (1.3 kg)			
Environmental system				
Work environment	Suitable for Damp Locations			
Operating temperature	-4°F to 113°F (-20°C to 45°C)			
L-70 Life	> 54,000 hrs			
Optical system				
Color temperature	5CCT switch (2,700/3,000/3,500/4,000/5,000 K), 3,000 K by default			
CRI	> 80			
Electrical system				
Input voltage	120 V			
Max input current	for 8 inch models: 0.1 A			
	for 12 inch models: 0.12 A			
	for 14 inch models: 0.23 A			
Inrush current (Action time)	for 8 inch models: 40 A (0.3 S)			
	for 12 inch models: 40 A (0.01 S)			
	for 14 inch models: 40 A (0.42 S)			
Off state power	0W			
Power consumption	12W			
Power factor	> 0.9			
Output voltage	36 V			
Max output current	for 8 inch models: 0.25 A			
	for 12 inch models: 0.3 A			
	for 14 inch models: 0.61 A			
Surge protection DM/CM	2.5 kV / 2.5 kV			
Dimming range				
10-100%				
Dimming compatible controls				
Brand	Lutron Leviton			
Models	CTCL-153PDH-WH	S-600PR-WH	DB33K1	6674
	DVW-603PGH-WH	CTCL-153P	1A2305	6672
	MIR-600THW-WH	DV-600P	1F4205	
	MACL-153M-WH	NT-1000	6633-P	
	CT-603PGH-WH	S-603P	VP106	
	DVCL-153P-WH	S-600P	IPL06	
	SLV-600P-WH	4X603	6683	
Regular and voluntary certifications				
5-year limited warranty				
UL certified E473804				
FCC compliant				

PACKAGE CONTENTS:

Description	Q-ty
LED Wall Sconce	1
Mounting plate (A)	1
Wire nut (B)	3
Mounting screw (C)	2
Fixture screw (D)	2
Box	1



INSTALLATION GUIDE

IMPORTANT SAFETY INFORMATION:

Please read all the instructions below before installation.

- ▶ Make sure that the supply voltage corresponds to the rated product voltage.
- ▶ The product must be installed by a qualified electrician in accordance with the National Electrical Code and corresponding local codes.
- ▶ If the product is damaged, do not use it.

⚠ WARNING

Risk of personal injury – read and follow all warnings and installation instructions. Keep or give to the owner for future reference.

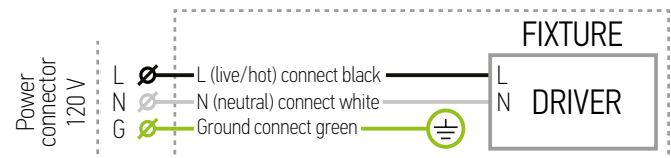
Risk of cuts: Wear gloves to prevent cuts or abrasions when removing from carton, handling, installing, and maintaining this product.

Risk of electric shock: This product must be installed in accordance with the applicable installation code by a person familiar with the construction and operation of the product and the hazards involved.

Risk of Fire: Minimum 194°F supply conductors. Consult a qualified electrician to ensure correct branch circuit conductor.

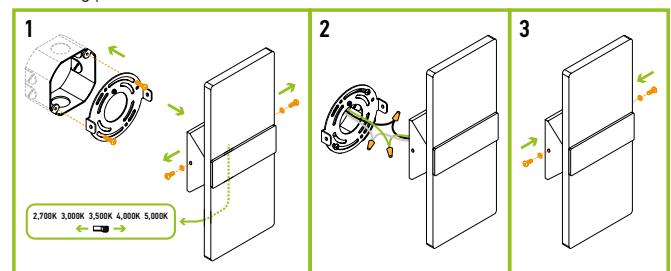
ASD® assumes no responsibility for claims arising out of improper or careless Installation or handling of this product.

ELECTRICAL SCHEMATIC DIAGRAM:



INSTALLATION STEPS:

1. Unscrew the two fixture screws from both sides of the wall sconce. Remove the mounting plate and attach it to the existing outlet box using two mounting screws. Choose preferred color temperature by adjusting the switch position inside the fixture.
2. Connect the wires: Black to Black, White to White, Green to Green. Secure the connection with wire nuts.
3. Fix the wall sconce to the mounting plate using two fixture screws on both sides. Before tightening the screws, align the holes of both the fixture and the mounting plate to ensure a solid fit.



For most up-to-date spec sheets please refer to asd-lighting.com