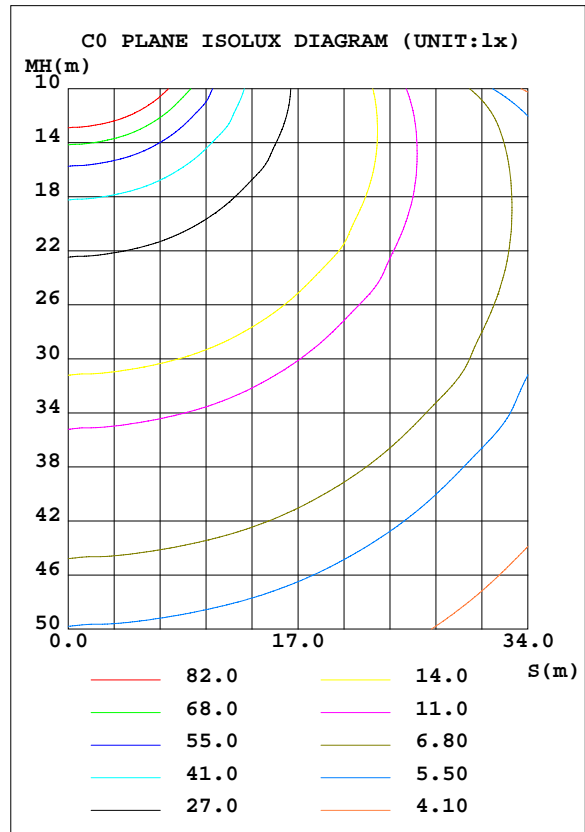
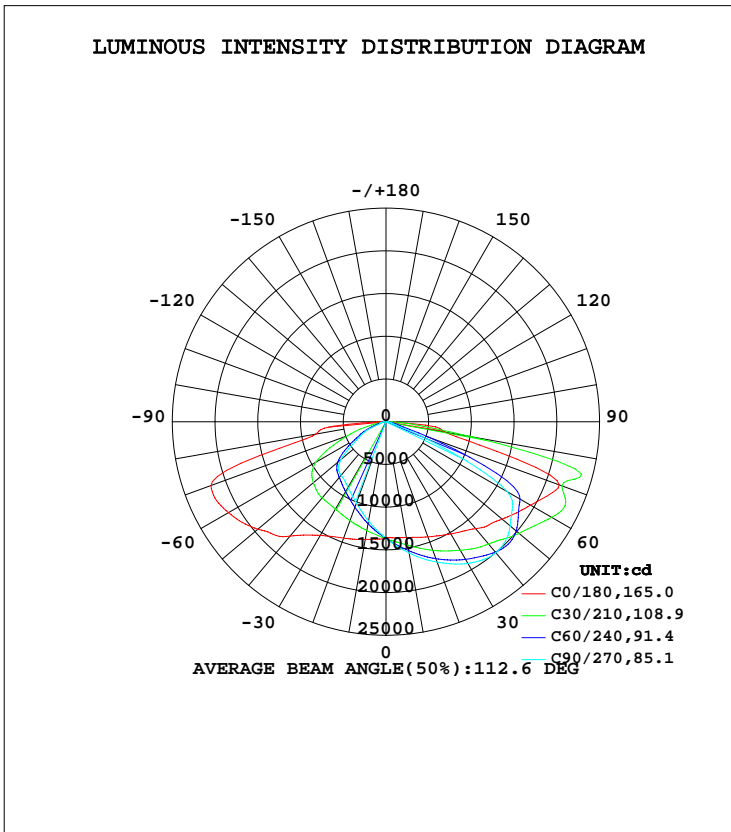


LUMINAIRE PHOTOMETRIC TEST REPORT

Test:U:277.00V I:1.8063A P:501.8 W PF:0.9921 Freq:60.00Hz Lamp Flux:83403x1 lm		
NAME: ASD Lighting Corp	TYPE: LED	WEIGHT:
SPEC.: ASD-LSB2HV-500D50B-PRM	DIM.:	SERIAL No.:
MFR.: ASD Lighting Corp	SUR.:	Shielding Angle:

DATA OF LAMP		PHOTOMETRIC DATA Eff: 166,2 lm/W			
MODEL	ASD-LSB2HV-500D50B-PRM	I <sub>max</sub> (cd)	27913	S/MH(C0/180)	1.95
NOMINAL POWER(W)	500	LOR(%)	100.0	S/MH(C90/270)	0.97
RATED VOLTAGE(V)	277-480	TOTAL FLUX(lm)	83403	η UP, DN(C0-180)	0.1,65.7
NOMINAL FLUX(lm)	83403	CIE CLASS	DIRECT	η UP, DN(C180-360)	0.1,34.2
LAMPS INSIDE	1	η up(%)	0.1	CIBSE SHR NOM	1.75
TEST VOLTAGE(V)	277	η down(%)	99.9	CIBSE SHR MAX	1.75



C Range: 0 - 360DEG  
 C Interval: 15.0DEG  
 Test Speed: HIGH  
 Temperature: 25.1DEG  
 Operators: Alan Wang  
 Test Date: 16 August 2021

γ Range: 0 - 180DEG  
 γ Interval: 1.0DEG  
 Test System: EVERFINE GO-R5000\_V2 SYSTEM V2.00.416  
 Humidity: 50.1%  
 Test Distance: 2.500m [K=1.0473]  
 Remarks:

## ZONAL FLUX DIAGRAM

## ZONAL FLUX DIAGRAM:

$\gamma$	C0	C45	C90	C135	C180	C225	C270	C315	$\gamma$	$\Phi$ zone	$\Phi$ total	%lum,lamp
10	1376	1504	1559	1511	1399	1248	1180	1232	0- 10	1308	1308	1.94,1.94
20	1434	1660	1748	1667	1450	1134	1012	1118	10- 20	3938	5246	7.78,7.78
30	1516	1811	1915	1824	1537	1034	889.6	1016	20- 30	6577	11823	17.5,17.5
40	1633	1943	2000	1978	1748	952.3	817.8	929.9	30- 40	9228	21051	31.2,31.2
50	1774	2065	1897	2139	1956	827.0	686.6	819.8	40- 50	11757	32808	48.6,48.6
60	1954	2000	1639	2087	2128	563.4	364.6	549.8	50- 60	13241	46049	68.3,68.3
70	2157	1554	198.4	1626	2180	246.6	96.25	246.3	60- 70	12509	58557	86.8,86.8
80	700.4	169.0	56.70	177.6	833.2	55.91	44.97	55.70	70- 80	7339	65896	97.7,97.7
90	18.65	7.515	4.609	8.038	60.60	2.809	0.3096	2.278	80- 90	1453	67349	99.9,99.9
100	0.9776	0.3373	0.1976	0.4253	1.776	1.385	0.7745	1.624	90-100	30.98	67380	99.9,99.9
110	1.072	0.4406	0.2809	0.6254	1.648	1.552	1.133	1.678	100-110	10.64	67391	99.9,99.9
120	1.288	0.5388	0.3974	0.7632	1.603	1.687	1.362	1.655	110-120	10.82	67401	99.9,99.9
130	1.449	0.6817	0.5306	0.8763	1.736	1.919	1.759	1.761	120-130	11.26	67413	100,100
140	1.325	0.8370	0.7123	0.9782	1.608	1.995	1.841	1.813	130-140	10.74	67423	100,100
150	1.178	0.9672	0.9052	1.060	1.568	1.848	1.851	1.738	140-150	8.777	67432	100,100
160	1.269	1.133	1.081	1.270	1.696	1.819	1.752	1.739	150-160	6.626	67439	100,100
170	1.411	1.405	1.330	1.483	1.742	1.747	1.619	1.594	160-170	4.313	67443	100,100
180	1.422	1.422	1.422	1.422	1.477	1.477	1.477	1.477	170-180	1.501	67445	100,100
DEG	LUMINOUS INTENSITY:×10cd									UNIT:lm		

Conical surface Flux(90deg): 26656 lm

%lum = 39.5%

%lamp = 39.5%

Conical surface Flux(120deg): 46049 lm

%lum = 68.3%

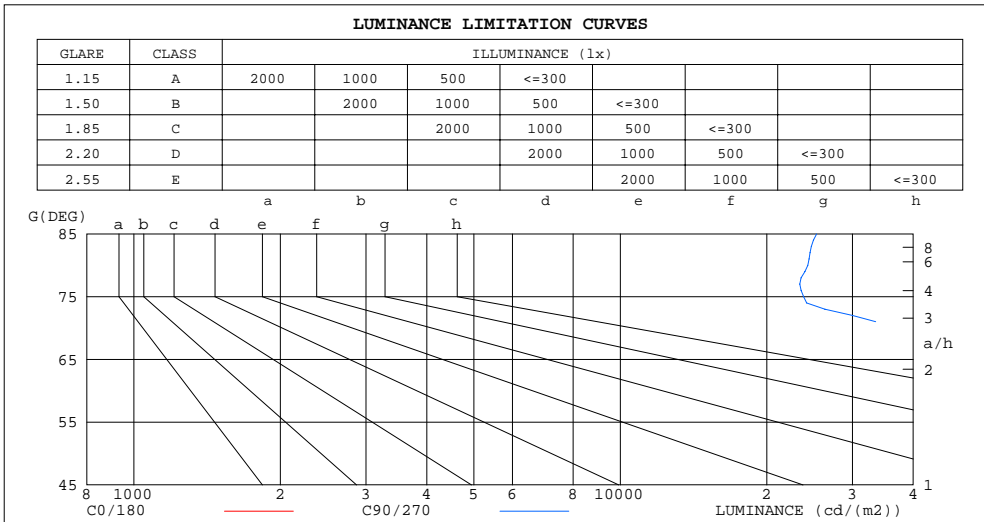
%lamp = 68.3%

C Range: 0 - 360DEG  
 C Interval: 15.0DEG  
 Test Speed: HIGH  
 Temperature: 25.1DEG  
 Operators: Alan Wang  
 Test Date: 16 August 2021

$\gamma$  Range: 0 - 180DEG  
 $\gamma$  Interval: 1.0DEG  
 Test System: EVERFINE GO-R5000\_V2 SYSTEM V2.00.416  
 Humidity: 50.1%  
 Test Distance: 2.500m [K=1.0473]  
 Remarks:

LUMINANCE LIMITATION CURVES

Test:U:277.00V I:1.8063A P:496.39W PF:0.9921 Freq:60.00Hz Lamp Flux:83403x1 lm		
NAME: ASD Lighting Corp	TYPE: LED	WEIGHT:
SPEC.: ASD-LSB2HV-500D50B-PRM	DIM.:	SERIAL No.:
MFR.: ASD Lighting Corp	SUR.:	Shielding Angle:



LUMINANCE cd/(m2)		
G(DEG)	C0/180	C90/270
85	396692	25317
80	300095	24294
75	386377	23812
70	469162	43160
65	364383	150017
60	290727	243927
55	241561	233859
50	205297	219590
45	179516	207906

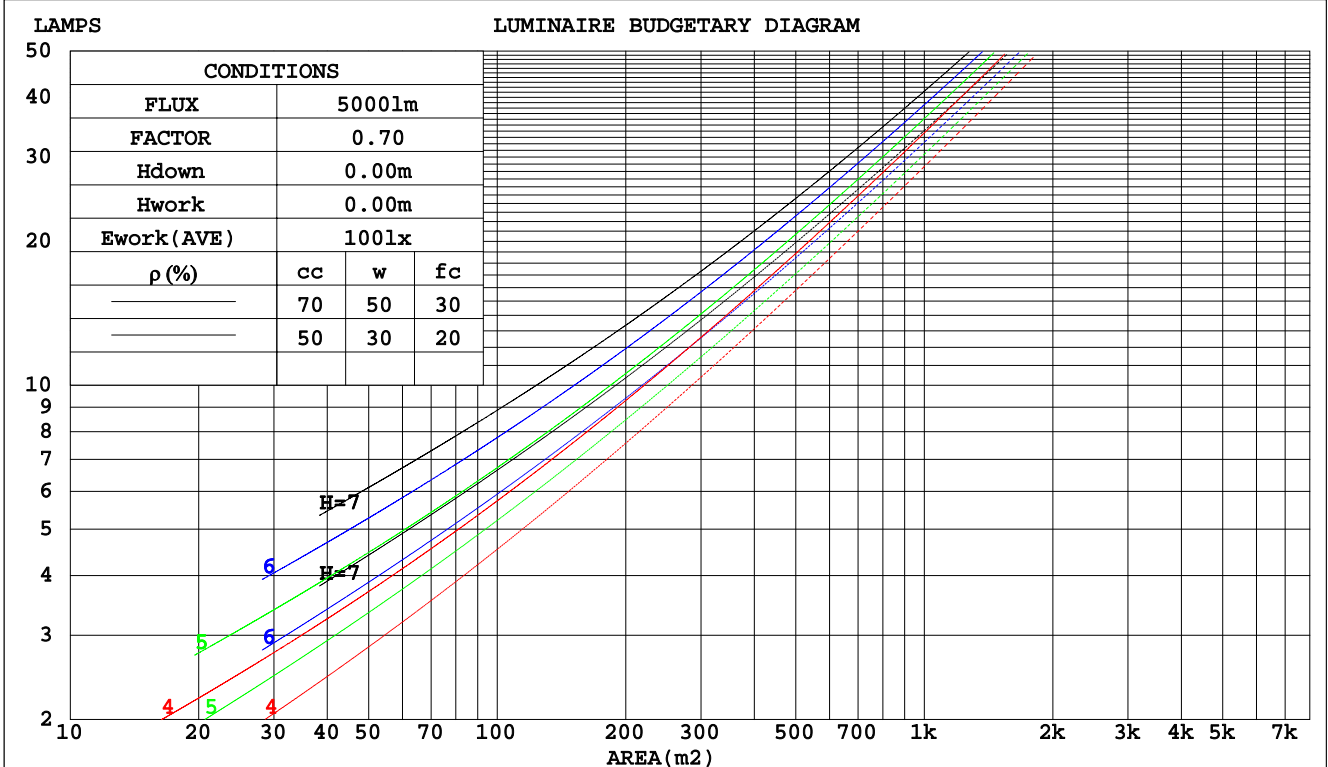
C Range: 0 - 360DEG  
 C Interval: 15.0DEG  
 Test Speed: HIGH  
 Temperature: 25.1DEG  
 Operators: Alan Wang  
 Test Date: 16 August 2021

γ Range: 0 - 180DEG  
 γ Interval: 1.0DEG  
 Test System: EVERFINE GO-R5000\_V2 SYSTEM V2.00.416  
 Humidity: 50.1%  
 Test Distance: 2.500m [K=1.0473]  
 Remarks:

CU AND LUMINAIRE BUDGETARY ESTIMATE DIAGRAM

Test:U:277.00V I:1.8063A P:496.39W PF:0.9921 Freq:60.00Hz Lamp Flux:83403x1 lm		
NAME: ASD Lighting Corp	TYPE: LED	WEIGHT:
SPEC.: ASD-LSB2HV-500D50B-PRM	DIM.:	SERIAL No.:
MFR.: ASD Lighting Corp	SUR.:	Shielding Angle:

pcc	80%			70%			50%			30%			10%			0
	50%	30%	10%	50%	30%	10%	50%	30%	10%	50%	30%	10%	50%	30%	10%	0
pw																0
pfc	20%			20%			20%			20%			20%			0
RCR	RCR:Room Cavity Ratio      Coefficients of Utilization(CU)															
0.0	1.19	1.19	1.19	1.16	1.16	1.16	1.11	1.11	1.11	1.06	1.06	1.06	1.02	1.02	1.02	.00
1.0	1.01	.96	.92	.99	.95	.90	.95	.91	.88	.91	.88	.85	.87	.85	.82	.80
2.0	.86	.78	.72	.84	.77	.71	.80	.74	.69	.77	.72	.67	.74	.70	.66	.63
3.0	.74	.64	.57	.72	.63	.56	.69	.61	.55	.66	.60	.54	.63	.58	.53	.51
4.0	.64	.54	.46	.63	.53	.46	.60	.52	.45	.57	.50	.45	.55	.49	.44	.42
5.0	.56	.46	.39	.55	.46	.38	.53	.44	.38	.51	.43	.38	.49	.42	.37	.35
6.0	.50	.40	.33	.49	.39	.33	.47	.39	.32	.45	.38	.32	.43	.37	.32	.29
7.0	.45	.35	.28	.44	.35	.28	.42	.34	.28	.41	.33	.28	.39	.32	.27	.25
8.0	.40	.31	.25	.40	.31	.25	.38	.30	.24	.37	.30	.24	.36	.29	.24	.22
9.0	.37	.28	.22	.36	.28	.22	.35	.27	.22	.34	.27	.21	.33	.26	.21	.19
10.0	.34	.25	.19	.33	.25	.19	.32	.24	.19	.31	.24	.19	.30	.24	.19	.17



C Range: 0 - 360DEG  
 C Interval: 15.0DEG  
 Test Speed: HIGH  
 Temperature: 25.1DEG  
 Operators: Alan Wang  
 Test Date: 16 August 2021

γ Range: 0 - 180DEG  
 γ Interval: 1.0DEG  
 Test System: EVERFINE GO-R5000\_V2 SYSTEM V2.00.416  
 Humidity: 50.1%  
 Test Distance: 2.500m [K=1.0473]  
 Remarks:

WEC AND CCEC

Test:U:277.00V I:1.8063A P:496.39W PF:0.9921 Freq:60.00Hz Lamp Flux:83403x1 lm		
NAME: ASD Lighting Corp	TYPE: LED	WEIGHT:
SPEC.: ASD-LSB2HV-500D50B-PRM	DIM.:	SERIAL No.:
MFR.: ASD Lighting Corp	SUR.:	Shielding Angle:

ρcc	80%			70%			50%			30%			10%			0
ρw	50%	30%	10%	50%	30%	10%	50%	30%	10%	50%	30%	10%	50%	30%	10%	0
ρfc	20%			20%			20%			20%			20%			0
RCR	RCR:Room Cavity Ratio						Wall Exitance Coefficients(WEC)									
0.0																
1.0	.356	.203	.064	.349	.199	.063	.335	.192	.061	.323	.186	.060	.311	.180	.058	
2.0	.334	.183	.056	.327	.180	.056	.315	.175	.054	.304	.171	.053	.294	.166	.052	
3.0	.306	.163	.049	.300	.161	.048	.289	.157	.048	.279	.153	.047	.270	.149	.046	
4.0	.279	.145	.043	.274	.143	.042	.264	.140	.042	.255	.137	.041	.247	.134	.041	
5.0	.256	.130	.038	.251	.129	.038	.242	.126	.037	.234	.124	.037	.227	.121	.036	
6.0	.235	.118	.034	.231	.117	.034	.223	.114	.033	.216	.112	.033	.209	.110	.033	
7.0	.217	.107	.030	.213	.106	.030	.206	.104	.030	.200	.102	.030	.194	.101	.030	
8.0	.201	.098	.028	.198	.097	.028	.192	.096	.027	.186	.094	.027	.180	.093	.027	
9.0	.187	.091	.025	.184	.090	.025	.179	.088	.025	.174	.087	.025	.169	.086	.025	
10.0	.175	.084	.023	.172	.083	.023	.167	.082	.023	.163	.081	.023	.158	.080	.023	

ρcc	80%			70%			50%			30%			10%			0
ρw	50%	30%	10%	50%	30%	10%	50%	30%	10%	50%	30%	10%	50%	30%	10%	0
ρfc	20%			20%			20%			20%			20%			0
RCR	RCR:Room Cavity Ratio						Ceiling Cavity Exitance Coefficients(CCEC)									
0.0	.192	.192	.192	.164	.164	.164	.112	.112	.112	.064	.064	.064	.021	.021	.021	
1.0	.185	.157	.132	.158	.135	.113	.108	.093	.078	.062	.054	.046	.020	.017	.015	
2.0	.179	.133	.094	.153	.114	.081	.105	.079	.057	.061	.046	.033	.019	.015	.011	
3.0	.172	.116	.070	.148	.100	.061	.102	.069	.043	.059	.040	.025	.019	.013	.008	
4.0	.165	.103	.055	.142	.089	.048	.098	.062	.034	.056	.036	.020	.018	.012	.007	
5.0	.158	.093	.045	.136	.080	.039	.093	.056	.027	.054	.033	.016	.017	.011	.005	
6.0	.151	.085	.037	.129	.073	.032	.089	.051	.023	.052	.030	.014	.017	.010	.004	
7.0	.143	.078	.032	.123	.067	.028	.085	.047	.020	.049	.028	.012	.016	.009	.004	
8.0	.136	.072	.028	.117	.062	.024	.081	.044	.017	.047	.026	.010	.015	.008	.003	
9.0	.130	.067	.025	.112	.058	.022	.077	.041	.015	.045	.024	.009	.015	.008	.003	
10.0	.124	.063	.022	.107	.055	.019	.074	.038	.014	.043	.023	.008	.014	.007	.003	

C Range: 0 - 360DEG  
 C Interval: 15.0DEG  
 Test Speed: HIGH  
 Temperature: 25.1DEG  
 Operators: Alan Wang  
 Test Date: 16 August 2021

γ Range: 0 - 180DEG  
 γ Interval: 1.0DEG  
 Test System: EVERFINE GO-R5000\_V2 SYSTEM V2.00.416  
 Humidity: 50.1%  
 Test Distance: 2.500m [K=1.0473]  
 Remarks:

UGR(Unified Glare Rating) Table

Test:U:277.00V I:1.8063A P:501,8W PF:0.9921 Freq:60.00Hz Lamp Flux:83403x1 lm										
NAME: ASD Lighting Corp					TYPE: LED			WEIGHT:		
SPEC.: ASD-LSB2HV-500D50B-PRM					DIM.:			SERIAL No.:		
MFR.: ASD Lighting Corp					SUR.:			Shielding Angle:		
ceiling/cavity	0.7	0.7	0.5	0.5	0.3	0.7	0.7	0.5	0.5	0.3
walls	0.5	0.3	0.5	0.3	0.3	0.5	0.3	0.5	0.3	0.3
working plane	0.2	0.2	0.2	0.2	0.2	0.2	0.2	0.2	0.2	0.2
Room dimensions	Viewed crosswise					Viewed endwise				
x = 2H y = 2H	34.3	36.1	34.7	36.4	36.7	32.8	34.6	33.2	34.9	35.2
3H	38.8	40.4	39.2	40.8	41.1	33.0	34.6	33.4	35.0	35.3
4H	40.1	41.7	40.5	42.0	42.4	32.9	34.5	33.3	34.9	35.2
6H	40.5	42.0	40.9	42.3	42.7	32.9	34.4	33.3	34.7	35.1
8H	40.6	42.0	41.1	42.4	42.8	32.9	34.3	33.3	34.7	35.1
12H	40.8	42.2	41.2	42.5	43.0	32.9	34.2	33.3	34.6	35.0
4H 2H	35.2	36.7	35.6	37.1	37.5	34.3	35.9	34.7	36.2	36.6
3H	39.8	41.1	40.2	41.5	41.9	34.6	35.9	35.0	36.3	36.7
4H	41.6	42.8	42.0	43.2	43.7	34.5	35.8	35.0	36.2	36.6
6H	42.1	43.2	42.6	43.6	44.1	34.5	35.6	35.0	36.0	36.5
8H	42.3	43.3	42.7	43.7	44.2	34.5	35.5	35.0	36.0	36.4
12H	42.5	43.4	43.0	43.8	44.3	34.5	35.4	35.0	35.9	36.4
8H 4H	41.7	42.7	42.2	43.2	43.6	35.9	36.9	36.3	37.3	37.8
6H	42.5	43.3	42.9	43.8	44.2	35.8	36.7	36.3	37.2	37.6
8H	42.7	43.4	43.2	43.9	44.4	35.8	36.6	36.3	37.1	37.6
12H	42.9	43.6	43.4	44.1	44.6	35.8	36.5	36.3	37.0	37.5
12H 4H	41.7	42.6	42.2	43.1	43.5	36.3	37.2	36.8	37.7	38.1
6H	42.4	43.2	43.0	43.7	44.2	36.3	37.0	36.8	37.5	38.0
8H	42.7	43.3	43.2	43.8	44.4	36.3	36.9	36.8	37.4	38.0
CIE190: 2010										

CIE190: 2010  
Area: 0.1344 m2

C Range: 0 - 360DEG  
C Interval: 15.0DEG  
Test Speed: HIGH  
Temperature: 25.1DEG  
Operators: Alan Wang  
Test Date: 16 August 2021

γ Range: 0 - 180DEG  
γ Interval: 1.0DEG  
Test System: EVERFINE GO-R5000\_V2 SYSTEM V2.00.416  
Humidity: 50.1%  
Test Distance: 2.500m [K=1.0473]  
Remarks:

## UTILIZATION FACTORS TABLE

Test:U:277.00V I:1.8063A P:501,8W PF:0.9921 Freq:60.00Hz Lamp Flux:83403x1 lm		
NAME: ASD Lighting Corp	TYPE: LED	WEIGHT:
SPEC.: ASD-LSB2HV-500D50B-PRM	DIM.:	SERIAL No.:
MFR.: ASD Lighting Corp	SUR.:	Shielding Angle:

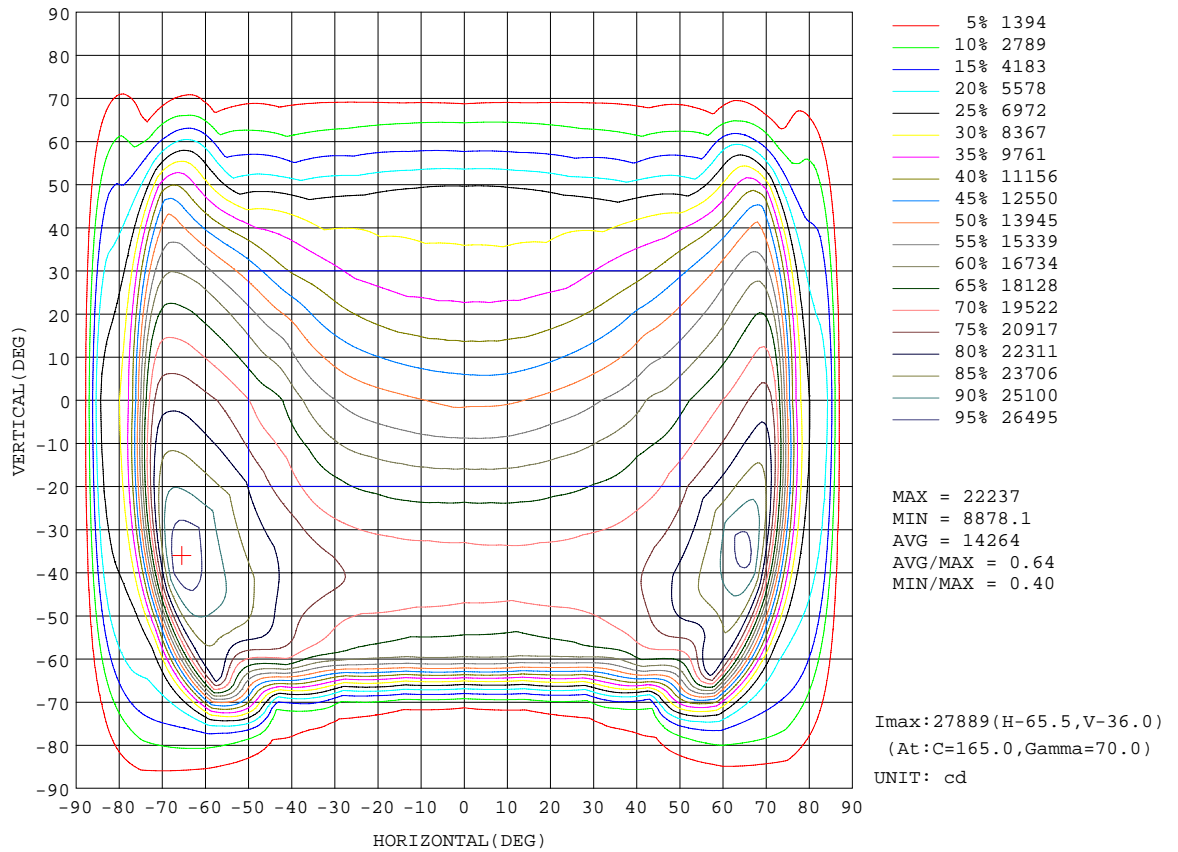
REFLECTANCE										
Ceiling	0.8	0.8	0.8	0.7	0.7	0.7	0.5	0.5	0.5	0
Walls	0.7	0.5	0.3	0.7	0.5	0.3	0.7	0.5	0.3	0
Working plane	0.2	0.2	0.2	0.2	0.2	0.2	0.2	0.2	0.2	0
ROOM INDEX	UTILIZATION FACTORS(PERCENT) $k(RI) \times RCR = 5$									
k = 0.60	50	37	29	49	37	29	48	36	29	22
0.80	60	47	38	59	46	38	57	45	38	30
1.00	69	56	47	67	55	47	65	57	47	39
1.25	76	64	56	75	63	55	72	62	55	46
1.50	82	70	62	80	70	62	77	68	61	52
2.00	90	80	72	88	79	72	84	76	70	61
2.50	95	86	79	93	84	78	89	82	76	67
3.00	99	91	84	97	89	83	92	86	81	72
4.00	104	97	92	101	95	90	97	92	88	78
5.00	107	101	96	104	99	95	100	95	92	82
ROOM INDEX	UF(total)									Direct
According to DIN EN 13032-2 2004			Suspended				SHRNOM = 1.25			

C Range: 0 - 360DEG  
 C Interval: 15.0DEG  
 Test Speed: HIGH  
 Temperature: 25.1DEG  
 Operators: Alan Wang  
 Test Date: 16 August 2021

$\gamma$  Range: 0 - 180DEG  
 $\gamma$  Interval: 1.0DEG  
 Test System: EVERFINE GO-R5000\_V2 SYSTEM V2.00.416  
 Humidity: 50.1%  
 Test Distance: 2.500m [K=1.0473]  
 Remarks:

ISOCANDELA DIAGRAM

Test:U:277.00V I:1.8063A P:501,8W PF:0.9921 Freq:60.00Hz Lamp Flux:83403x1 lm		
NAME: ASD Lighting Corp	TYPE: LED	WEIGHT:
SPEC.: ASD-LSB2HV-500D50B-PRM	DIM.:	SERIAL No.:
MFR.: ASD Lighting Corp	SUR.:	Shielding Angle:



C Range: 0 - 360DEG  
 C Interval: 15.0DEG  
 Test Speed: HIGH  
 Temperature: 25.1DEG  
 Operators: Alan Wang  
 Test Date: 16 August 2021

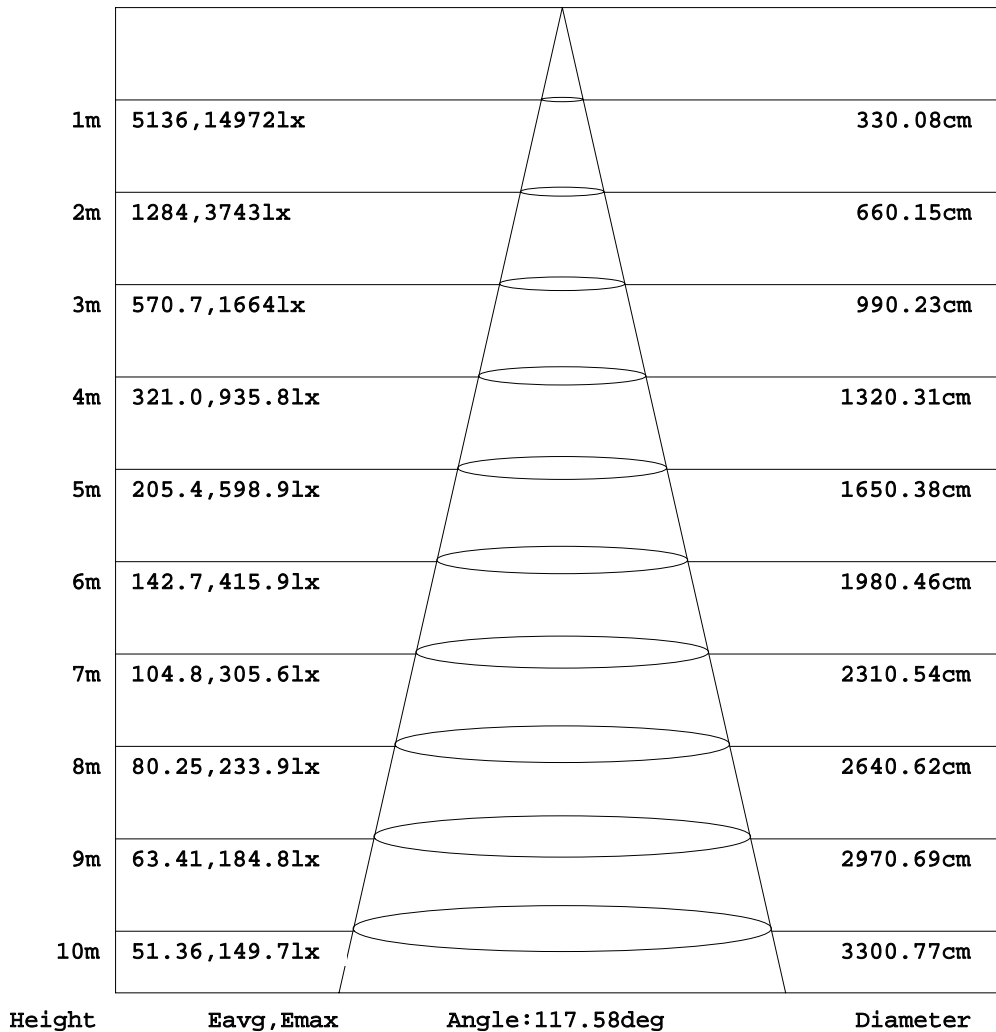
γ Range: 0 - 180DEG  
 γ Interval: 1.0DEG  
 Test System: EVERFINE GO-R5000\_V2 SYSTEM V2.00.416  
 Humidity: 50.1%  
 Test Distance: 2.500m [K=1.0473]  
 Remarks:



AAI Figure

Test:U:277.00V I:1.8063A P:501,8W PF:0.9921 Freq:60.00Hz Lamp Flux:83403x1 lm		
NAME: ASD Lighting Corp	TYPE: LED	WEIGHT:
SPEC.: ASD-LSB2HV-500D50B-PRM	DIM.:	SERIAL No.:
MFR.: ASD Lighting Corp	SUR.:	Shielding Angle:

Flux out:44693 lm



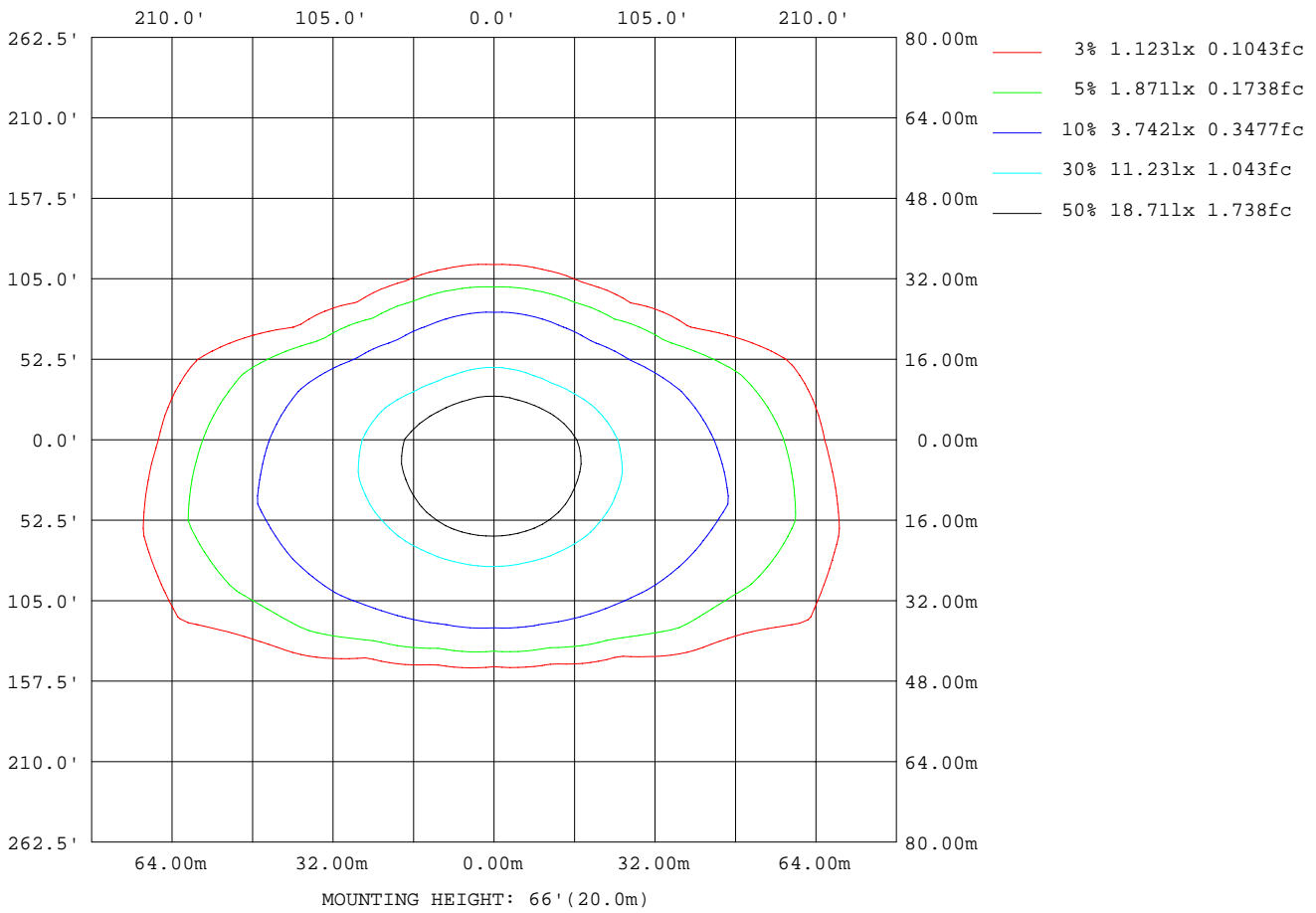
Note:The Curves indicate the illuminated area and the average illumination when the luminaire is at different distance.

C Range: 0 - 360DEG  
 C Interval: 15.0DEG  
 Test Speed: HIGH  
 Temperature: 25.1DEG  
 Operators: Alan Wang  
 Test Date: 16 August 2021

γ Range: 0 - 180DEG  
 γ Interval: 1.0DEG  
 Test System: EVERFINE GO-R5000\_V2 SYSTEM V2.00.416  
 Humidity: 50.1%  
 Test Distance: 2.500m [K=1.0473]  
 Remarks:

ISOLUX DIAGRAM

Test:U:277.00V I:1.8063A P:501,8W PF:0.9921 Freq:60.00Hz Lamp Flux:83403x1 lm		
NAME: ASD Lighting Corp	TYPE: LED	WEIGHT:
SPEC.: ASD-LSB2HV-500D50B-PRM	DIM.:	SERIAL No.:
MFR.: ASD Lighting Corp	SUR.:	Shielding Angle:



C Range: 0 - 360DEG  
 C Interval: 15.0DEG  
 Test Speed: HIGH  
 Temperature: 25.1DEG  
 Operators: Alan Wang  
 Test Date: 16 August 2021

γ Range: 0 - 180DEG  
 γ Interval: 1.0DEG  
 Test System: EVERFINE GO-R5000\_V2 SYSTEM V2.00.416  
 Humidity: 50.1%  
 Test Distance: 2.500m [K=1.0473]  
 Remarks:

## LED Avg.L Report

Test:U:277.00V I:1.8063A P:501,8W PF:0.9921 Freq:60.00Hz Lamp Flux:83403x1 lm		
NAME: ASD Lighting Corp	TYPE: LED	WEIGHT:
SPEC.: ASD-LSB2HV-500D50B-PRM	DIM.:	SERIAL No.:
MFR.: ASD Lighting Corp	SUR.:	Shielding Angle:

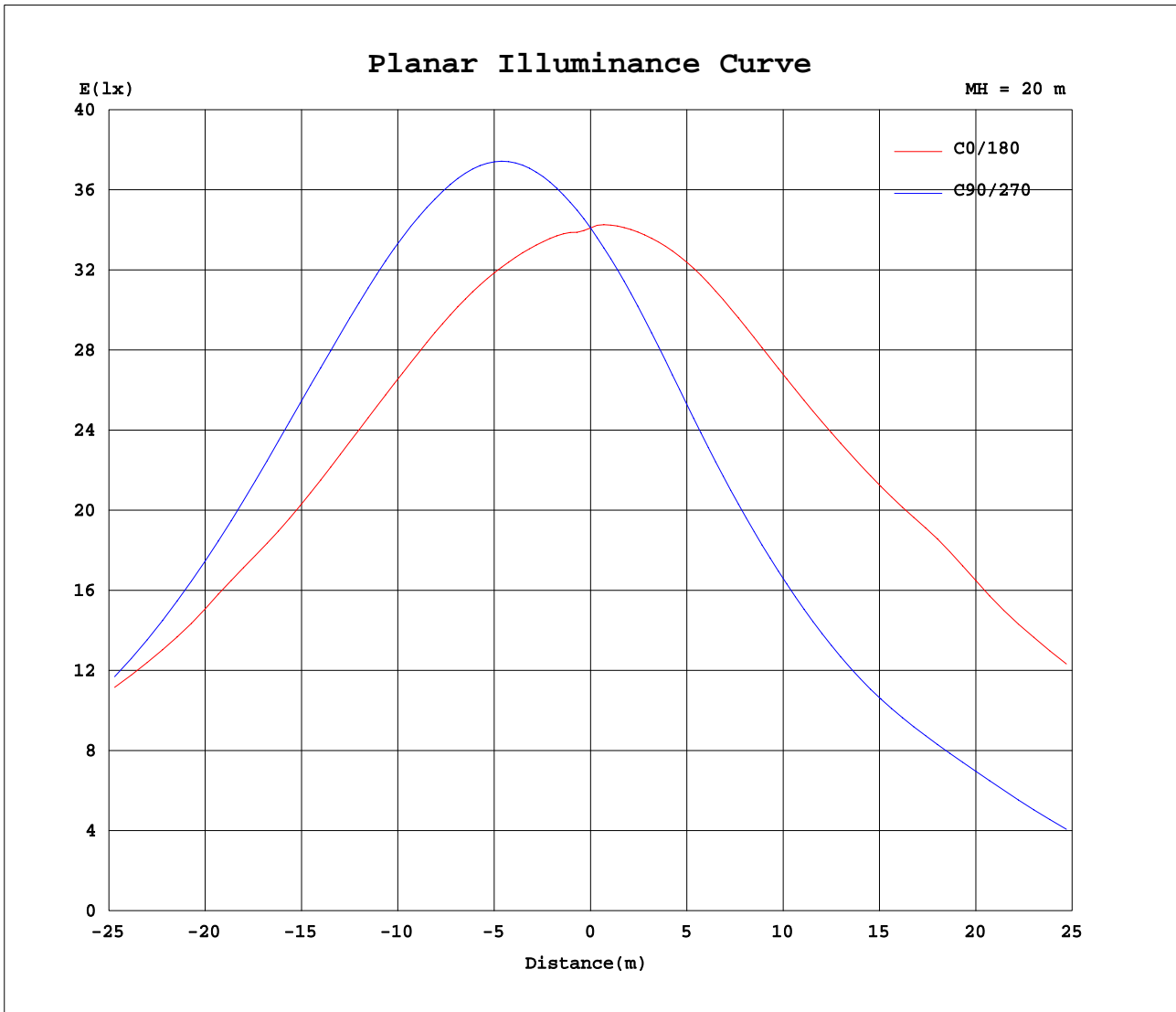
AvgL	cd/m2
L_0~180(65)av	374655
L_0~180(75)av	413325
L_0~180(85)av	463740
L_90~270(65)av	98009
L_90~270(75)av	21124
L_90~270(85)av	19452
L_45(65)av	209849
L_45(75)av	81510
L_45(85)av	41282

Standard: GB/T 29293-2012

C Range: 0 - 360DEG  
 C Interval: 15.0DEG  
 Test Speed: HIGH  
 Temperature: 25.1DEG  
 Operators: Alan Wang  
 Test Date: 16 August 2021

$\gamma$  Range: 0 - 180DEG  
 $\gamma$  Interval: 1.0DEG  
 Test System: EVERFINE GO-R5000\_V2 SYSTEM V2.00.416  
 Humidity: 50.1%  
 Test Distance: 2.500m [K=1.0473]  
 Remarks:

Planar Illuminance Curve



C Range: 0 - 360DEG  
 C Interval: 15.0DEG  
 Test Speed: HIGH  
 Temperature: 25.1DEG  
 Operators: Alan Wang  
 Test Date: 16 August 2021

$\gamma$  Range: 0 - 180DEG  
 $\gamma$  Interval: 1.0DEG  
 Test System: EVERFINE GO-R5000\_V2 SYSTEM V2.00.416  
 Humidity: 50.1%  
 Test Distance: 2.500m [K=1.0473]  
 Remarks:

LUMINOUS DISTRIBUTION INTENSITY DATA

Test:U:277.00V I:1.8063A P:501,8W PF:0.9921 Freq:60.00Hz Lamp Flux:83403x1 lm		
NAME: ASD Lighting Corp	TYPE: LED	WEIGHT:
SPEC.: ASD-LSB2HV-500D50B-PRM	DIM.:	SERIAL No.:
MFR.: ASD Lighting Corp	SUR.:	Shielding Angle:

Table--1

UNIT: x10cd

C(DEG) γ (DEG)	0	15	30	45	60	75	90	105	120	135	150	165	180	195	210	225	240	255	270
0	1364	1364	1364	1364	1364	1364	1364	1364	1364	1364	1364	1364	1364	1364	1364	1364	1364	1364	1364
5	1364	1392	1413	1432	1447	1456	1460	1457	1448	1434	1415	1397	1380	1354	1329	1307	1290	1278	1272
10	1376	1425	1468	1504	1532	1551	1559	1554	1538	1511	1476	1437	1399	1346	1294	1248	1213	1191	1180
15	1401	1472	1532	1582	1621	1646	1657	1649	1626	1590	1542	1483	1424	1343	1262	1190	1136	1104	1091
20	1434	1526	1601	1660	1705	1736	1748	1738	1710	1667	1607	1530	1450	1343	1232	1134	1064	1026	1012
25	1471	1582	1669	1736	1785	1821	1836	1822	1789	1743	1673	1581	1483	1349	1205	1081	1002	961	946
30	1516	1641	1737	1811	1861	1896	1915	1904	1871	1824	1746	1648	1537	1367	1182	1034	946	904	890
35	1566	1707	1809	1879	1926	1958	1973	1972	1946	1902	1838	1746	1620	1407	1169	993	895	854	843
40	1633	1785	1868	1943	1991	1998	2000	2017	2019	1978	1926	1878	1748	1475	1165	952	852	822	818
45	1706	1863	1942	2019	2024	1983	1976	2006	2060	2075	2047	2005	1866	1551	1146	896	812	791	788
50	1774	1959	2033	2065	1988	1905	1897	1930	2025	2139	2168	2130	1956	1587	1111	827	737	701	687
55	1862	2109	2123	2050	1891	1806	1803	1825	1917	2123	2264	2294	2055	1629	1060	728	595	532	504
60	1954	2297	2239	2000	1811	1685	1639	1698	1840	2087	2368	2453	2128	1646	948	563	426	383	365
65	2070	2552	2313	1939	1430	973	852	993	1493	2076	2449	2632	2186	1630	726	377	305	278	261
70	2157	2717	2192	1554	536	278	198	277	569	1626	2369	2791	2180	1545	479	247	183	126	96.2
75	1344	2101	2368	420	155	93.2	82.8	94.5	160	484	2357	2250	1532	1373	269	117	84.4	62.2	64.1
80	700	736	1020	169	78.2	58.5	56.7	59.3	81.7	178	1269	771	833	531	75.1	55.9	47.8	49.5	45.0
85	465	381	277	72.1	35.8	30.3	29.7	31.0	38.4	80.7	299	454	622	63.4	27.8	21.9	20.3	18.9	15.9
90	18.6	60.8	31.5	7.52	7.03	6.74	4.61	7.07	8.10	8.04	40.4	94.9	60.6	5.81	4.60	2.81	1.95	0.50	0.31
95	0.86	1.22	0.47	0.27	0.20	0.18	0.17	0.19	0.23	0.37	1.53	0.70	1.63	1.73	1.50	1.19	0.83	0.58	0.52
100	0.98	0.75	0.54	0.34	0.23	0.21	0.20	0.21	0.28	0.43	0.61	0.82	1.78	1.84	1.65	1.39	1.11	0.85	0.77
105	1.00	0.81	0.60	0.40	0.28	0.24	0.24	0.26	0.35	0.53	0.73	0.91	1.73	1.75	1.66	1.52	1.35	1.09	1.01
110	1.07	0.88	0.65	0.44	0.32	0.29	0.28	0.31	0.43	0.63	0.85	1.02	1.65	1.64	1.60	1.55	1.43	1.22	1.13
115	1.16	0.96	0.70	0.48	0.37	0.34	0.33	0.38	0.50	0.70	0.93	1.11	1.60	1.59	1.60	1.61	1.48	1.29	1.23
120	1.29	1.04	0.77	0.54	0.44	0.40	0.40	0.45	0.58	0.76	1.01	1.21	1.60	1.66	1.66	1.69	1.58	1.41	1.36
125	1.43	1.09	0.82	0.61	0.50	0.47	0.47	0.52	0.65	0.82	1.05	1.27	1.67	1.83	1.76	1.81	1.74	1.64	1.58
130	1.45	1.13	0.86	0.68	0.59	0.54	0.53	0.59	0.72	0.88	1.08	1.31	1.74	1.92	1.92	1.92	1.86	1.83	1.76
135	1.42	1.17	0.93	0.75	0.69	0.63	0.62	0.69	0.80	0.92	1.10	1.30	1.72	1.90	2.01	1.98	1.92	1.94	1.86
140	1.32	1.17	0.97	0.84	0.76	0.71	0.71	0.77	0.87	0.98	1.09	1.26	1.61	1.79	1.91	2.00	1.95	1.93	1.84
145	1.23	1.15	1.01	0.91	0.86	0.83	0.82	0.87	0.96	1.02	1.08	1.20	1.56	1.72	1.82	1.93	1.95	1.93	1.86
150	1.18	1.14	1.05	0.97	0.93	0.91	0.91	0.95	1.02	1.06	1.08	1.15	1.57	1.68	1.75	1.85	1.89	1.91	1.85
155	1.20	1.19	1.15	1.05	1.01	1.00	0.99	1.06	1.13	1.16	1.18	1.20	1.61	1.64	1.75	1.81	1.83	1.88	1.79
160	1.27	1.26	1.22	1.13	1.10	1.10	1.08	1.17	1.24	1.27	1.28	1.30	1.70	1.71	1.75	1.82	1.80	1.83	1.75
165	1.32	1.34	1.33	1.28	1.25	1.24	1.20	1.31	1.41	1.42	1.39	1.38	1.72	1.73	1.74	1.78	1.80	1.78	1.71
170	1.41	1.43	1.43	1.40	1.36	1.36	1.33	1.41	1.50	1.48	1.45	1.45	1.74	1.74	1.75	1.75	1.73	1.71	1.62
175	1.57	1.57	1.55	1.52	1.46	1.43	1.41	1.44	1.54	1.58	1.57	1.57	1.76	1.76	1.76	1.76	1.72	1.68	1.61
180	1.42	1.42	1.42	1.42	1.42	1.42	1.42	1.42	1.42	1.42	1.42	1.42	1.48	1.48	1.48	1.48	1.48	1.48	1.48

C Range: 0 - 360DEG  
 C Interval: 15.0DEG  
 Test Speed: HIGH  
 Temperature: 25.1DEG  
 Operators: Alan Wang  
 Test Date: 16 August 2021

γ Range: 0 - 180DEG  
 γ Interval: 1.0DEG  
 Test System: EVERFINE GO-R5000\_V2 SYSTEM V2.00.416  
 Humidity: 50.1%  
 Test Distance: 2.500m [K=1.0473]  
 Remarks:

LUMINOUS DISTRIBUTION INTENSITY DATA

Test:U:277.00V I:1.8063A P:501,8W PF:0.9921 Freq:60.00Hz Lamp Flux:83403x1 lm		
NAME: ASD Lighting Corp	TYPE: LED	WEIGHT:
SPEC.: ASD-LSB2HV-500D50B-PRM	DIM.:	SERIAL No.:
MFR.: ASD Lighting Corp	SUR.:	Shielding Angle:

Table--2

UNIT: x10cd

C(DEG) γ (DEG)	285	300	315	330	345														
0	1364	1364	1364	1364	1364														
5	1274	1281	1294	1312	1333														
10	1185	1202	1232	1271	1317														
15	1100	1126	1174	1238	1313														
20	1022	1055	1118	1209	1316														
25	955	991	1066	1183	1324														
30	897	933	1016	1160	1337														
35	848	882	971	1142	1356														
40	818	841	930	1127	1384														
45	792	806	884	1104	1425														
50	703	736	820	1064	1440														
55	529	587	714	1009	1468														
60	378	413	550	909	1493														
65	281	304	376	708	1517														
70	126	182	246	469	1492														
75	61.0	82.3	113	265	1306														
80	48.4	46.1	55.7	72.8	431														
85	17.8	18.4	18.7	23.8	54.4														
90	0.43	1.97	2.28	3.59	5.43														
95	0.59	0.89	1.37	1.69	1.78														
100	0.87	1.19	1.62	1.85	1.90														
105	1.11	1.42	1.71	1.83	1.82														
110	1.22	1.44	1.68	1.75	1.70														
115	1.27	1.44	1.63	1.66	1.65														
120	1.37	1.50	1.65	1.67	1.69														
125	1.58	1.65	1.73	1.76	1.80														
130	1.73	1.76	1.76	1.86	1.91														
135	1.81	1.76	1.81	1.91	1.95														
140	1.76	1.76	1.81	1.83	1.84														
145	1.80	1.81	1.73	1.76	1.77														
150	1.80	1.73	1.74	1.73	1.72														
155	1.78	1.74	1.72	1.80	1.73														
160	1.71	1.74	1.74	1.82	1.74														
165	1.64	1.70	1.73	1.80	1.74														
170	1.62	1.61	1.59	1.71	1.68														
175	1.58	1.60	1.60	1.71	1.65														
180	1.48	1.48	1.48	1.48	1.48														

C Range: 0 - 360DEG  
 C Interval: 15.0DEG  
 Test Speed: HIGH  
 Temperature: 25.1DEG  
 Operators: Alan Wang  
 Test Date: 16 August 2021

γ Range: 0 - 180DEG  
 γ Interval: 1.0DEG  
 Test System: EVERFINE GO-R5000\_V2 SYSTEM V2.00.416  
 Humidity: 50.1%  
 Test Distance: 2.500m [K=1.0473]  
 Remarks: