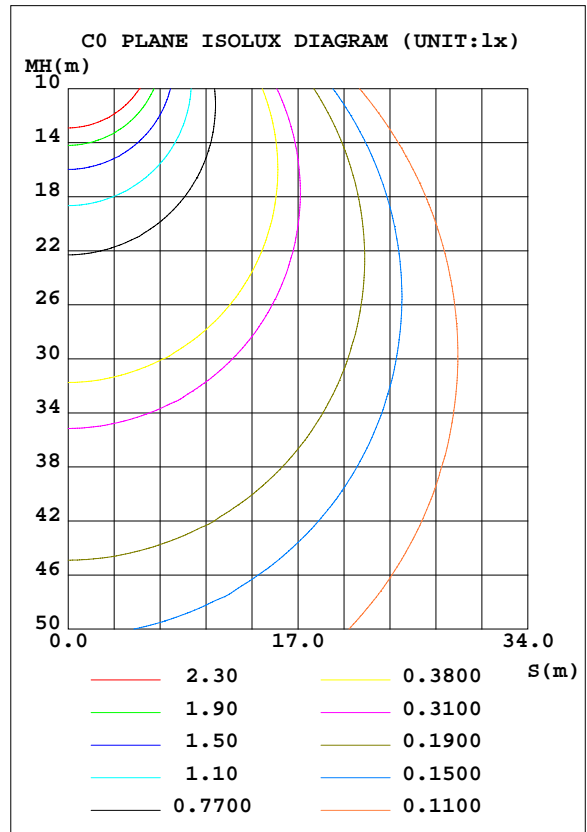
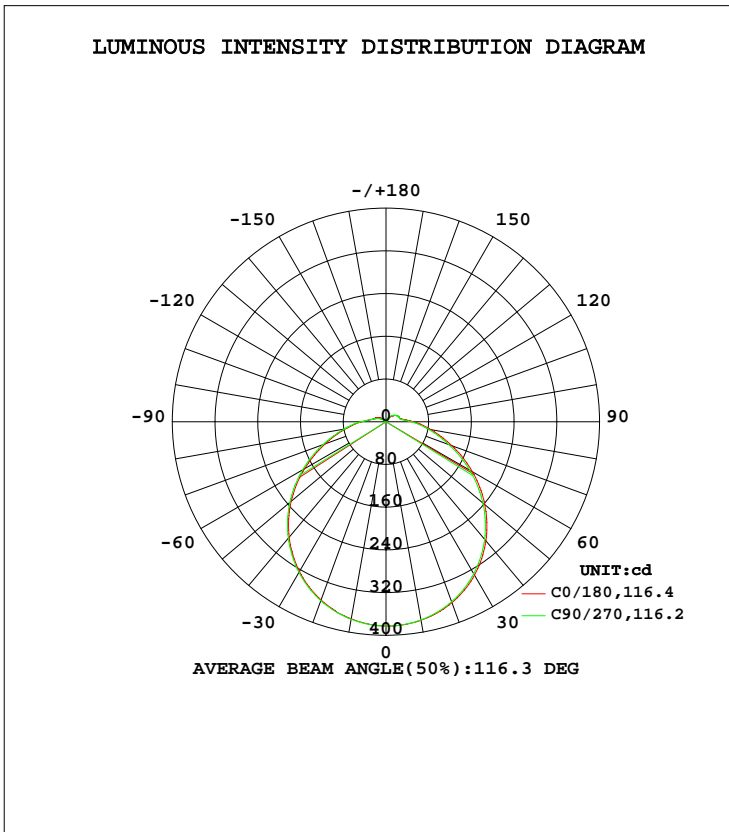


LUMINAIRE PHOTOMETRIC TEST REPORT

Test:U:120.1V I:0.1242A P:14.75W PF:0.9893 Lamp Flux:1323.27x1 lm		
NAME: ASD-LFMDR-MV-12N15CC-MS-XX	TYPE:N/A	WEIGHT:N/A
SPEC.:	DIM.: N/A	SERIAL No.:N/A
MFR.: ASD Lighting corp	SUR.:N/A	Shielding Angle:N/A

DATA OF LAMP		PHOTOMETRIC DATA Eff: 89.71 lm/W			
MODEL	ASD-LFMDR-MV-12N15CC-MS-XX	Imax(cd)	382.7	S/MH(C0/180)	1.29
NOMINAL POWER(W)	15	LOR(%)	100.0	S/MH(C90/270)	1.28
RATED VOLTAGE(V)	120	TOTAL FLUX(lm)	1323.3	η UP, DN(C0-180)	3.7,45.6
NOMINAL FLUX(lm)	1323.27	CIE CLASS	DIRECT	η UP, DN(C180-360)	4.9,45.8
LAMPS INSIDE	1	η up(%)	8.6	CIBSE SHR NOM	1.25
TEST VOLTAGE(V)	120	η down(%)	91.4	CIBSE SHR MAX	1.35



C Range: 0 - 360DEG
 C Interval: 22.5DEG
 Test Speed: 10.0deg/s
 Temperature:24.8DEG
 Operators:East
 Test Date:2020-09-09

γ Range: 0 - 180DEG
 γ Interval: 1.0DEG
 Test System:EVERFINE GO-R5000_V2 SYSTEM V2.0.351
 Humidity:35%
 Test Distance:2.492m [K=1.0000]
 Remarks:

ZONAL FLUX DIAGRAM

ZONAL FLUX DIAGRAM:

γ	C0	C45	C90	C135	C180	C225	C270	C315	γ	Φ zone	Φ total	%lum,lamp
10	374.8	374.7	375.5	376.7	377.5	377.7	376.7	375.4	0- 10	36.21	36.21	2.74,2.74
20	355.4	355.0	356.6	359.2	360.7	360.8	359.0	356.2	10- 20	104.0	140.2	10.6,10.6
30	324.0	324.1	325.8	329.8	331.6	331.7	328.7	324.9	20- 30	158.6	298.9	22.6,22.6
40	282.0	282.1	284.5	289.2	291.0	290.6	287.5	282.6	30- 40	192.7	491.6	37.2,37.2
50	231.7	232.1	235.0	240.0	241.6	241.0	237.2	231.8	40- 50	202.3	693.9	52.4,52.4
60	175.9	177.1	180.2	185.6	186.6	186.2	181.1	175.5	50- 60	186.9	880.8	66.6,66.6
70	121.2	122.8	125.7	131.3	131.5	129.2	125.1	119.7	60- 70	151.6	1032	78,78
80	77.09	78.10	79.99	85.52	85.33	83.65	80.42	75.50	70- 80	107.9	1140	86.2,86.2
90	45.54	45.72	47.09	51.38	51.89	50.08	47.74	45.08	80- 90	69.34	1210	91.4,91.4
100	26.69	26.15	26.20	28.88	30.06	29.56	28.03	26.57	90-100	39.92	1250	94.4,94.4
110	21.10	18.71	18.56	23.64	26.20	27.03	26.25	22.93	100-110	26.13	1276	96.4,96.4
120	15.76	9.932	9.427	18.37	23.13	24.56	23.59	19.97	110-120	20.71	1296	98,98
130	9.313	1.931	1.062	11.06	17.71	19.87	19.19	15.14	120-130	13.41	1310	99,99
140	4.505	1.267	0.6850	5.075	11.59	13.95	13.42	9.869	130-140	7.488	1317	99.5,99.5
150	2.314	1.641	1.383	2.501	6.848	7.546	7.376	5.443	140-150	3.730	1321	99.8,99.8
160	1.583	1.840	1.798	1.605	2.726	3.096	2.998	2.748	150-160	1.570	1323	99.9,99.9
170	1.655	1.782	1.341	1.266	1.555	1.426	1.544	1.684	160-170	0.5659	1323	100,100
180	0.5857	0.5846	0.5858	0.5688	0.5895	0.5887	0.5871	0.5938	170-180	0.1189	1323	100,100
DEG	LUMINOUS INTENSITY:cd Less than 25% Percent = 11.3 %								UNIT:lm			

Conical surface Flux(90deg): 593.15 lm

%lum = 44.8%
%lamp = 44.8%

Conical surface Flux(120deg): 880.78 lm

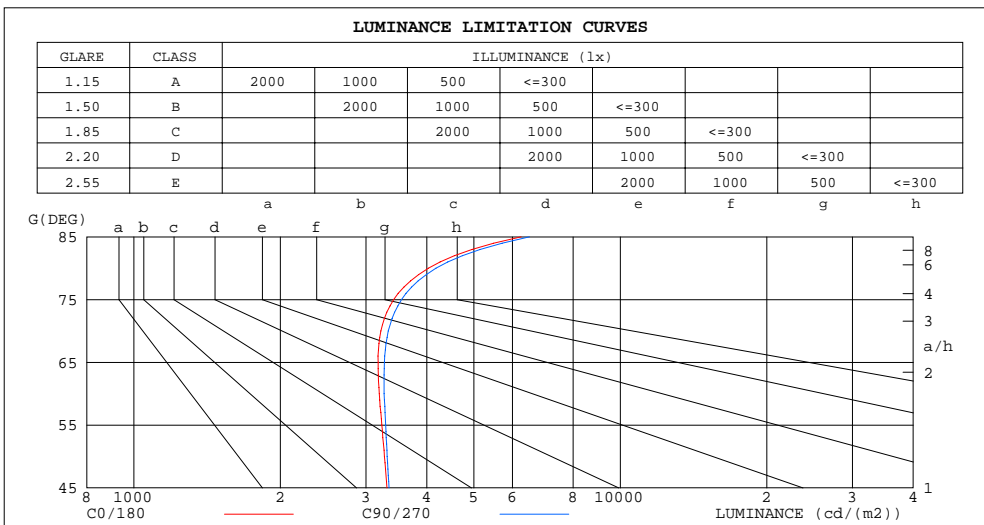
%lum = 66.6%
%lamp = 66.6%

C Range: 0 - 360DEG
C Interval: 22.5DEG
Test Speed: 10.0deg/s
Temperature:24.8DEG
Operators:East
Test Date:2020-09-09

γ Range: 0 - 180DEG
γ Interval: 1.0DEG
Test System:EVERFINE GO-R5000_V2 SYSTEM V2.0.351
Humidity:35%
Test Distance:2.492m [K=1.0000]
Remarks:

LUMINANCE LIMITATION CURVES

Test:U:120.1V I:0.1242A P:14.75W PF:0.9893 Lamp Flux:1323.27x1 lm		
NAME: ASD-LFMDR-MV-12N15CC-MS-XX	TYPE:N/A	WEIGHT:N/A
SPEC.:	DIM.: N/A	SERIAL No.:N/A
MFR.: ASD Lighting corp	SUR.:N/A	Shielding Angle:N/A



LUMINANCE cd/(m2)		
G (DEG)	C0/180	C90/270
85	6251	6502
80	4033	4179
75	3421	3550
70	3220	3335
65	3177	3274
60	3195	3269
55	3233	3293
50	3274	3316
45	3313	3345

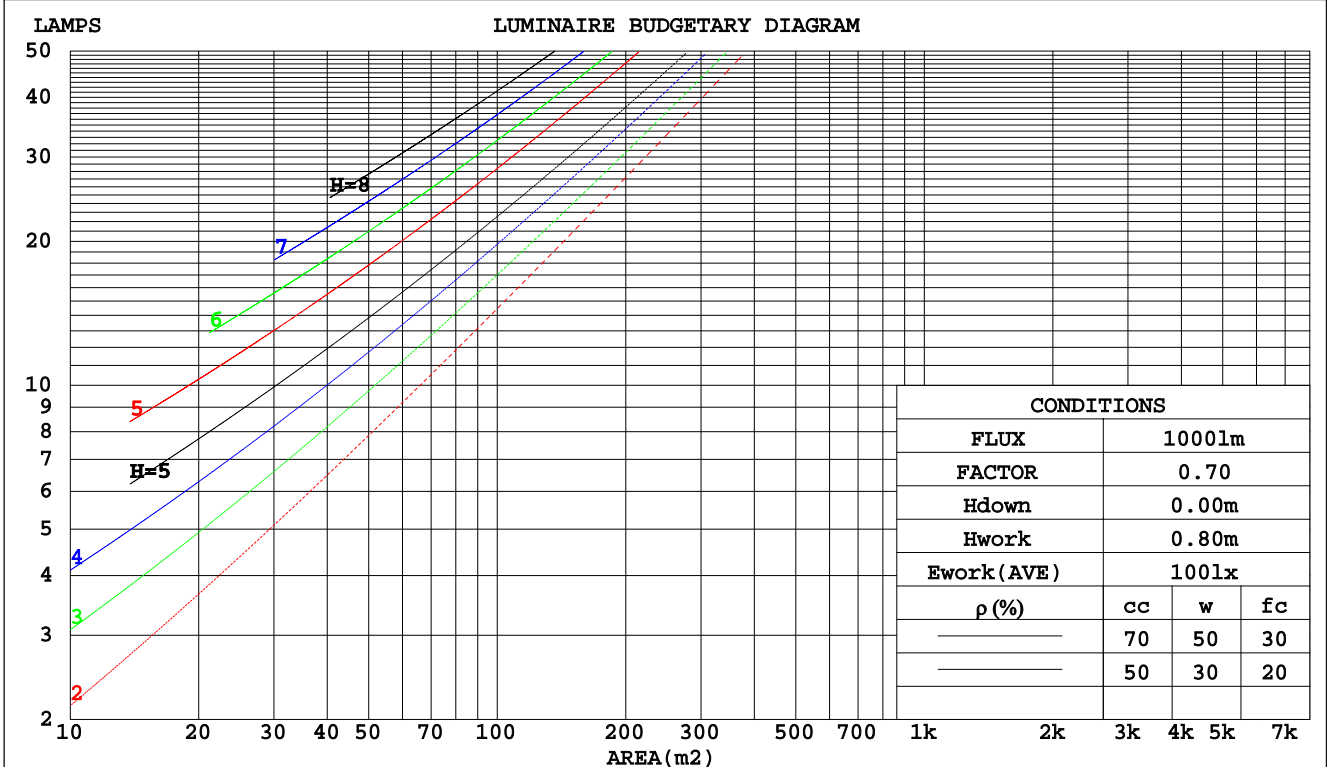
C Range: 0 - 360DEG
 C Interval: 22.5DEG
 Test Speed: 10.0deg/s
 Temperature:24.8DEG
 Operators:East
 Test Date:2020-09-09

γ Range: 0 - 180DEG
 γ Interval: 1.0DEG
 Test System:EVERFINE GO-R5000_V2 SYSTEM V2.0.351
 Humidity:35%
 Test Distance:2.492m [K=1.0000]
 Remarks:

CU AND LUMINAIRE BUDGETARY ESTIMATE DIAGRAM

Test:U:120.1V I:0.1242A P:14.75W PF:0.9893 Lamp Flux:1323.27x1 lm		
NAME: ASD-LFMDR-MV-12N15CC-MS-XX	TYPE:N/A	WEIGHT:N/A
SPEC.:	DIM.: N/A	SERIAL No.:N/A
MFR.: ASD Lighting corp	SUR.:N/A	Shielding Angle:N/A

pcc	80%			70%			50%			30%			10%			0
	50%	30%	10%	50%	30%	10%	50%	30%	10%	50%	30%	10%	50%	30%	10%	0
pw																0
pfc	20%			20%			20%			20%			20%			0
RCR	RCR:Room Cavity Ratio						Coefficients of Utilization(CU)									
0.0	1.17	1.17	1.17	1.13	1.13	1.13	1.06	1.06	1.06	.00	.00	.00	.94	.94	.94	.91
1.0	.00	.95	.90	.96	.92	.88	.91	.87	.84	.85	.82	.80	.80	.78	.76	.73
2.0	.86	.79	.72	.83	.77	.71	.78	.73	.68	.74	.69	.65	.70	.66	.62	.60
3.0	.75	.67	.60	.73	.65	.59	.69	.62	.56	.65	.59	.54	.61	.56	.52	.50
4.0	.66	.57	.50	.64	.56	.49	.61	.54	.48	.57	.51	.46	.54	.49	.45	.42
5.0	.59	.50	.43	.57	.49	.42	.54	.47	.41	.51	.45	.40	.49	.43	.39	.36
6.0	.53	.44	.37	.52	.43	.37	.49	.41	.36	.46	.40	.35	.44	.38	.34	.32
7.0	.48	.39	.33	.47	.38	.32	.44	.37	.32	.42	.36	.31	.40	.34	.30	.28
8.0	.44	.35	.29	.43	.35	.29	.41	.33	.28	.39	.32	.27	.37	.31	.27	.25
9.0	.40	.32	.26	.39	.31	.26	.37	.30	.25	.36	.29	.25	.34	.28	.24	.22
10.0	.37	.29	.24	.36	.29	.23	.35	.28	.23	.33	.27	.22	.32	.26	.22	.20



C Range: 0 - 360DEG
 C Interval: 22.5DEG
 Test Speed: 10.0deg/s
 Temperature:24.8DEG
 Operators:East
 Test Date:2020-09-09

γ Range: 0 - 180DEG
 γ Interval: 1.0DEG
 Test System:EVERFINE GO-R5000_V2 SYSTEM V2.0.351
 Humidity:35%
 Test Distance:2.492m [K=1.0000]
 Remarks:

WEC AND CCEC

Test:U:120.1V I:0.1242A P:14.75W PF:0.9893 Lamp Flux:1323.27x1 lm		
NAME: ASD-LFMDR-MV-12N15CC-MS-XX	TYPE:N/A	WEIGHT:N/A
SPEC.:	DIM.: N/A	SERIAL No.:N/A
MFR.: ASD Lighting corp	SUR.:N/A	Shielding Angle:N/A

ρcc	80%			70%			50%			30%			10%			0
ρw	50%	30%	10%	50%	30%	10%	50%	30%	10%	50%	30%	10%	50%	30%	10%	0
ρfc	20%			20%			20%			20%			20%			0
RCR	RCR:Room Cavity Ratio						Wall Exitance Coefficients(WEC)									
0.0																
1.0	.351	.200	.063	.342	.195	.062	.323	.185	.059	.306	.177	.057	.291	.169	.054	
2.0	.314	.172	.053	.305	.168	.052	.289	.160	.050	.273	.153	.048	.259	.147	.046	
3.0	.283	.151	.045	.276	.148	.044	.261	.141	.043	.247	.135	.042	.235	.130	.040	
4.0	.258	.134	.039	.251	.131	.039	.238	.126	.038	.225	.121	.037	.214	.116	.035	
5.0	.236	.120	.035	.230	.118	.034	.218	.114	.033	.207	.109	.032	.197	.105	.032	
6.0	.218	.109	.031	.212	.107	.031	.201	.103	.030	.191	.099	.029	.182	.096	.028	
7.0	.202	.100	.028	.196	.098	.028	.187	.094	.027	.178	.091	.026	.169	.088	.026	
8.0	.188	.092	.026	.183	.090	.025	.174	.087	.025	.166	.084	.024	.158	.081	.024	
9.0	.175	.085	.024	.171	.083	.023	.163	.081	.023	.155	.078	.022	.148	.075	.022	
10.0	.164	.079	.022	.161	.078	.022	.153	.075	.021	.146	.073	.021	.140	.070	.020	

ρcc	80%			70%			50%			30%			10%			0
ρw	50%	30%	10%	50%	30%	10%	50%	30%	10%	50%	30%	10%	50%	30%	10%	0
ρfc	20%			20%			20%			20%			20%			0
RCR	RCR:Room Cavity Ratio						Ceiling Cavity Exitance Coefficients(CCEC)									
0.0	.256	.256	.256	.219	.219	.219	.149	.149	.149	.086	.086	.086	.027	.027	.027	
1.0	.249	.222	.197	.213	.190	.170	.146	.131	.117	.084	.076	.068	.027	.024	.022	
2.0	.242	.198	.162	.207	.171	.140	.142	.118	.098	.082	.069	.057	.026	.022	.019	
3.0	.234	.181	.139	.200	.156	.121	.138	.109	.085	.079	.063	.050	.026	.021	.016	
4.0	.226	.168	.124	.194	.145	.108	.133	.101	.076	.077	.059	.045	.025	.019	.015	
5.0	.218	.158	.114	.188	.137	.099	.129	.096	.070	.075	.056	.041	.024	.018	.014	
6.0	.211	.150	.106	.181	.130	.092	.125	.091	.065	.073	.053	.039	.023	.017	.013	
7.0	.204	.143	.100	.176	.124	.088	.121	.087	.062	.070	.051	.037	.023	.017	.012	
8.0	.198	.137	.096	.170	.119	.084	.118	.084	.060	.068	.049	.035	.022	.016	.012	
9.0	.191	.133	.093	.165	.115	.081	.114	.081	.058	.067	.048	.034	.022	.016	.011	
10.0	.186	.128	.090	.160	.111	.079	.111	.078	.056	.065	.046	.033	.021	.015	.011	

C Range: 0 - 360DEG
 C Interval: 22.5DEG
 Test Speed: 10.0deg/s
 Temperature:24.8DEG
 Operators:East
 Test Date:2020-09-09

γ Range: 0 - 180DEG
 γ Interval: 1.0DEG
 Test System:EVERFINE GO-R5000_V2 SYSTEM V2.0.351
 Humidity:35%
 Test Distance:2.492m [K=1.0000]
 Remarks:

UGR(Unified Glare Rating) Table

Test:U:120.1V I:0.1242A P:14.75W PF:0.9893 Lamp Flux:1323.27x1 lm										
NAME: ASD-LFMDR-MV-12N15CC-MS-XX					TYPE:N/A			WEIGHT:N/A		
SPEC.:					DIM.: N/A			SERIAL No.:N/A		
MFR.: ASD Lighting corp					SUR.:N/A			Shielding Angle:N/A		
ceiling/cavity	0.7	0.7	0.5	0.5	0.3	0.7	0.7	0.5	0.5	0.3
walls	0.5	0.3	0.5	0.3	0.3	0.5	0.3	0.5	0.3	0.3
working plane	0.2	0.2	0.2	0.2	0.2	0.2	0.2	0.2	0.2	0.2
Room dimensions	Viewed crosswise					Viewed endwise				
x = 2H y = 2H	16.3	17.7	16.7	18.1	18.5	16.4	17.8	16.7	18.2	18.5
3H	18.0	19.4	18.4	19.7	20.2	18.1	19.5	18.6	19.9	20.3
4H	18.9	20.1	19.3	20.6	21.0	19.0	20.3	19.5	20.7	21.1
6H	19.7	20.9	20.2	21.4	21.8	19.9	21.1	20.4	21.5	22.0
8H	20.2	21.4	20.7	21.8	22.3	20.4	21.5	20.8	22.0	22.4
12H	20.7	21.9	21.2	22.3	22.8	20.9	22.0	21.4	22.5	23.0
4H 2H	16.9	18.2	17.4	18.6	19.0	17.0	18.3	17.4	18.7	19.1
3H	18.9	20.0	19.3	20.4	20.9	19.0	20.1	19.4	20.5	21.0
4H	19.9	20.9	20.4	21.4	21.9	20.0	21.0	20.5	21.5	22.0
6H	20.9	21.9	21.5	22.4	22.9	21.1	22.0	21.6	22.5	23.0
8H	21.5	22.4	22.1	22.9	23.5	21.7	22.5	22.2	23.0	23.6
12H	22.2	22.9	22.7	23.5	24.1	22.3	23.1	22.9	23.6	24.2
8H 4H	20.3	21.1	20.8	21.7	22.2	20.4	21.2	20.9	21.8	22.3
6H	21.6	22.3	22.2	22.9	23.5	21.7	22.4	22.3	23.0	23.6
8H	22.3	23.0	22.9	23.6	24.2	22.5	23.1	23.0	23.7	24.3
12H	23.2	23.7	23.8	24.3	25.0	23.3	23.9	23.9	24.5	25.1
12H 4H	20.4	21.2	20.9	21.7	22.3	20.5	21.2	21.0	21.8	22.4
6H	21.8	22.4	22.4	23.0	23.6	21.9	22.5	22.5	23.1	23.7
8H	22.6	23.2	23.2	23.8	24.4	22.7	23.3	23.3	23.9	24.5
Variations with the observer position at spacings:										
S = 1.0H	+ 0.1 / - 0.2					+ 0.1 / - 0.1				
1.5H	+ 0.2 / - 0.3					+ 0.2 / - 0.3				
2.0H	+ 0.1 / - 0.3					+ 0.1 / - 0.3				

CIE Pub.117 Corrected 1323 lm Total Lamp Luminous Flux.(8log(F/F0) = 1.0)

C Range: 0 - 360DEG
 C Interval: 22.5DEG
 Test Speed: 10.0deg/s
 Temperature:24.8DEG
 Operators:East
 Test Date:2020-09-09

γ Range: 0 - 180DEG
 γ Interval: 1.0DEG
 Test System:EVERFINE GO-R5000_V2 SYSTEM V2.0.351
 Humidity:35%
 Test Distance:2.492m [K=1.0000]
 Remarks:

UTILIZATION FACTORS TABLE

Test:U:120.1V I:0.1242A P:14.75W PF:0.9893 Lamp Flux:1323.27x1 lm		
NAME: ASD-LFMDR-MV-12N15CC-MS-XX	TYPE:N/A	WEIGHT:N/A
SPEC.:	DIM.: N/A	SERIAL No.:N/A
MFR.: ASD Lighting corp	SUR.:N/A	Shielding Angle:N/A

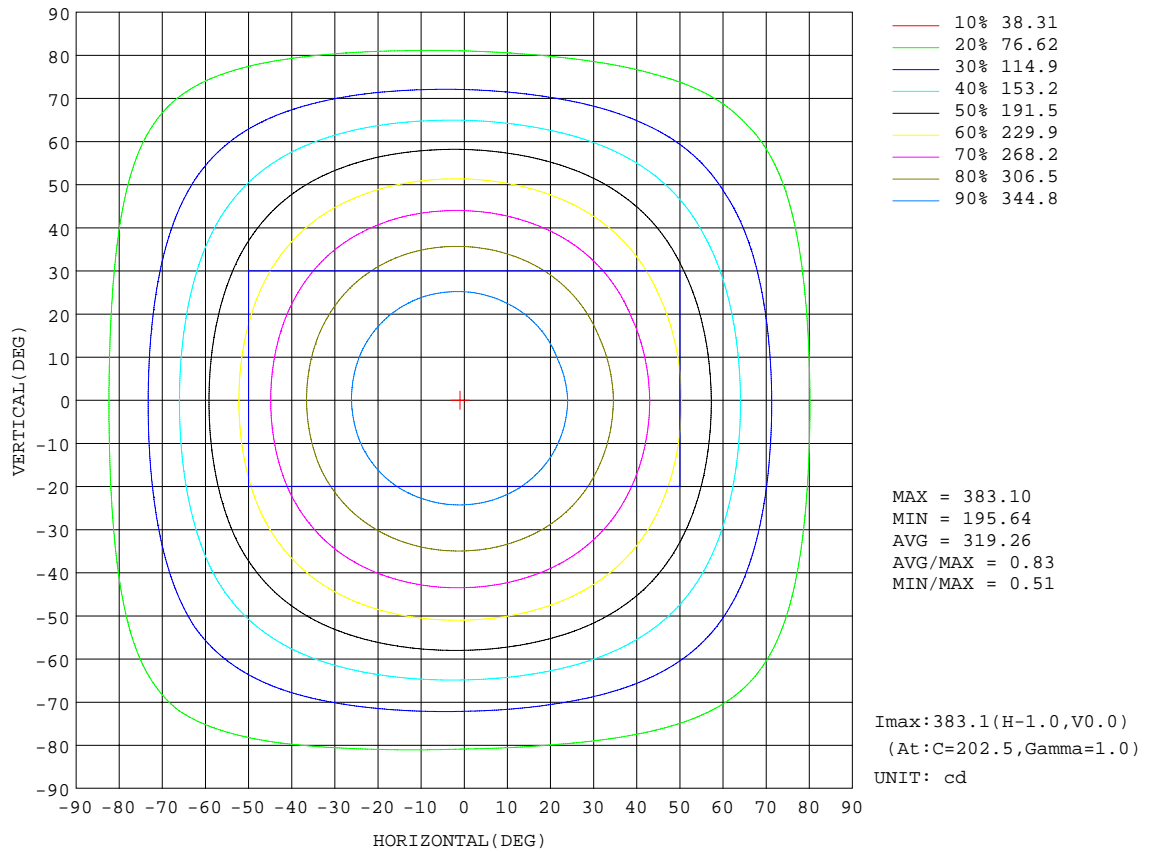
REFLECTANCE										
Ceiling	0.8	0.8	0.8	0.7	0.7	0.7	0.5	0.5	0.5	0
Walls	0.7	0.5	0.3	0.7	0.5	0.3	0.7	0.5	0.3	0
Working plane	0.2	0.2	0.2	0.2	0.2	0.2	0.2	0.2	0.2	0
ROOM INDEX	UTILIZATION FACTORS(PERCENT) $k(RI) \times RCR = 5$									
k = 0.60	53	41	34	52	41	34	51	40	33	27
0.80	62	50	43	61	50	42	59	49	42	34
1.00	71	59	51	69	58	50	66	59	49	42
1.25	78	66	58	76	65	58	72	63	56	48
1.50	83	71	64	80	70	63	76	68	61	53
2.00	90	80	72	87	78	71	83	75	69	59
2.50	94	85	78	91	83	76	86	79	74	63
3.00	97	89	83	94	87	81	89	83	78	67
4.00	102	95	89	98	92	87	93	88	83	72
5.00	104	98	93	101	96	91	95	91	87	75
ROOM INDEX	UF(total)									Direct
According to DIN EN 13032-2 2004			Suspended				SHRNOM = 1.25			

C Range: 0 - 360DEG
 C Interval: 22.5DEG
 Test Speed: 10.0deg/s
 Temperature:24.8DEG
 Operators:East
 Test Date:2020-09-09

γ Range: 0 - 180DEG
 γ Interval: 1.0DEG
 Test System:EVERFINE GO-R5000_V2 SYSTEM V2.0.351
 Humidity:35%
 Test Distance:2.492m [K=1.0000]
 Remarks:

ISOCANDELA DIAGRAM

Test:U:120.1V I:0.1242A P:14.75W PF:0.9893 Lamp Flux:1323.27x1 lm		
NAME: ASD-LFMDR-MV-12N15CC-MS-XX	TYPE:N/A	WEIGHT:N/A
SPEC.:	DIM.: N/A	SERIAL No.:N/A
MFR.: ASD Lighting corp	SUR.:N/A	Shielding Angle:N/A

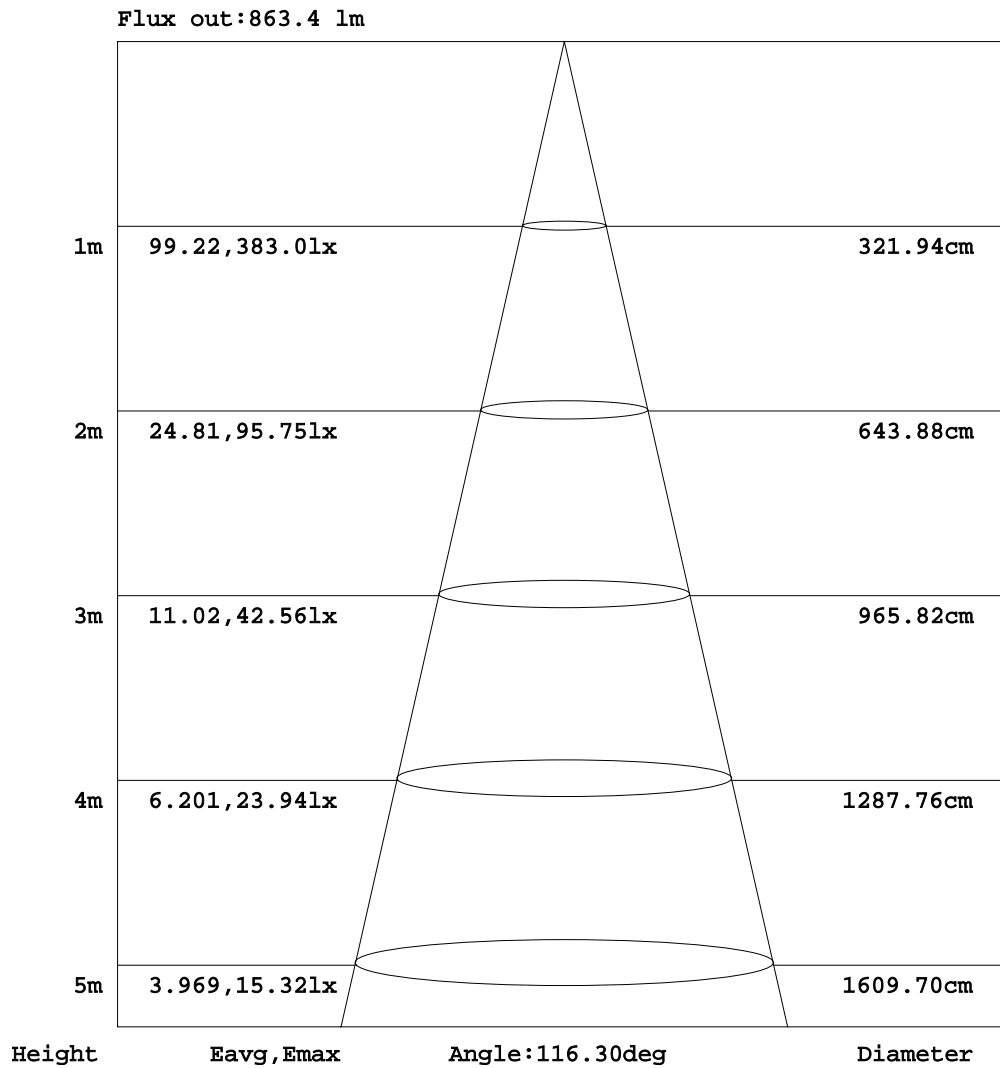


C Range: 0 - 360DEG
 C Interval: 22.5DEG
 Test Speed: 10.0deg/s
 Temperature: 24.8DEG
 Operators: East
 Test Date: 2020-09-09

γ Range: 0 - 180DEG
 γ Interval: 1.0DEG
 Test System: EVERFINE GO-R5000_V2 SYSTEM V2.0.351
 Humidity: 35%
 Test Distance: 2.492m [K=1.0000]
 Remarks:

AAI Figure

Test:U:120.1V I:0.1242A P:14.75W PF:0.9893 Lamp Flux:1323.27x1 lm		
NAME: ASD-LFMDR-MV-12N15CC-MS-XX	TYPE:N/A	WEIGHT:N/A
SPEC.:	DIM.: N/A	SERIAL No.:N/A
MFR.: ASD Lighting corp	SUR.:N/A	Shielding Angle:N/A



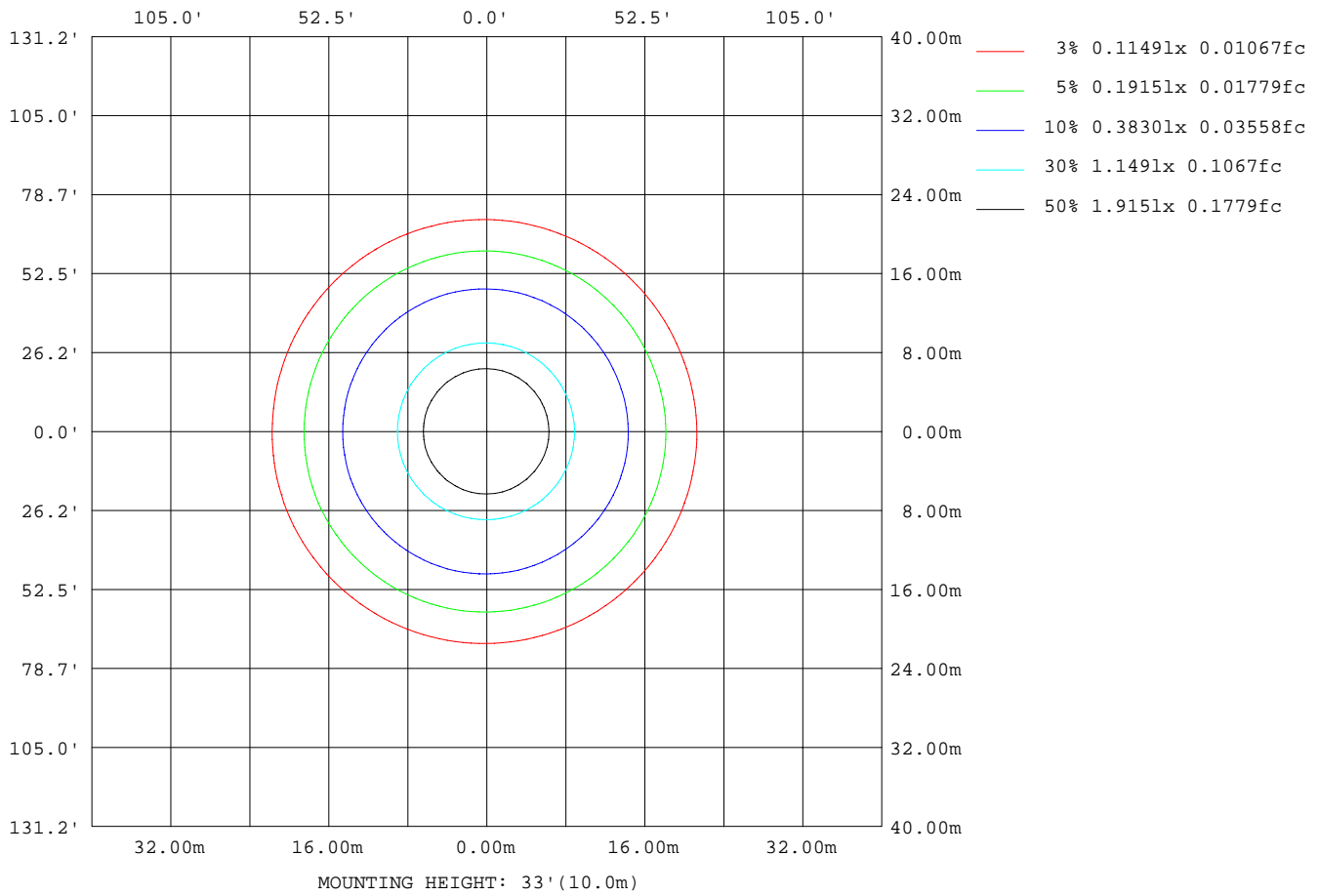
Note:The Curves indicate the illuminated area and the average illumination when the luminaire is at different distance.

C Range: 0 - 360DEG
 C Interval: 22.5DEG
 Test Speed: 10.0deg/s
 Temperature:24.8DEG
 Operators:East
 Test Date:2020-09-09

γ Range: 0 - 180DEG
 γ Interval: 1.0DEG
 Test System:EVERFINE GO-R5000_V2 SYSTEM V2.0.351
 Humidity:35%
 Test Distance:2.492m [K=1.0000]
 Remarks:

ISOLUX DIAGRAM

Test:U:120.1V I:0.1242A P:14.75W PF:0.9893 Lamp Flux:1323.27x1 lm		
NAME: ASD-LFMDR-MV-12N15CC-MS-XX	TYPE:N/A	WEIGHT:N/A
SPEC.:	DIM.: N/A	SERIAL No.:N/A
MFR.: ASD Lighting corp	SUR.:N/A	Shielding Angle:N/A



C Range: 0 - 360DEG
 C Interval: 22.5DEG
 Test Speed: 10.0deg/s
 Temperature:24.8DEG
 Operators:East
 Test Date:2020-09-09

γ Range: 0 - 180DEG
 γ Interval: 1.0DEG
 Test System:EVERFINE GO-R5000_V2 SYSTEM V2.0.351
 Humidity:35%
 Test Distance:2.492m [K=1.0000]
 Remarks:

LED Avg.L Report

Test:U:120.1V I:0.1242A P:14.75W PF:0.9893 Lamp Flux:1323.27x1 lm		
NAME: ASD-LFMDR-MV-12N15CC-MS-XX	TYPE:N/A	WEIGHT:N/A
SPEC.:	DIM.: N/A	SERIAL No.:N/A
MFR.: ASD Lighting corp	SUR.:N/A	Shielding Angle:N/A

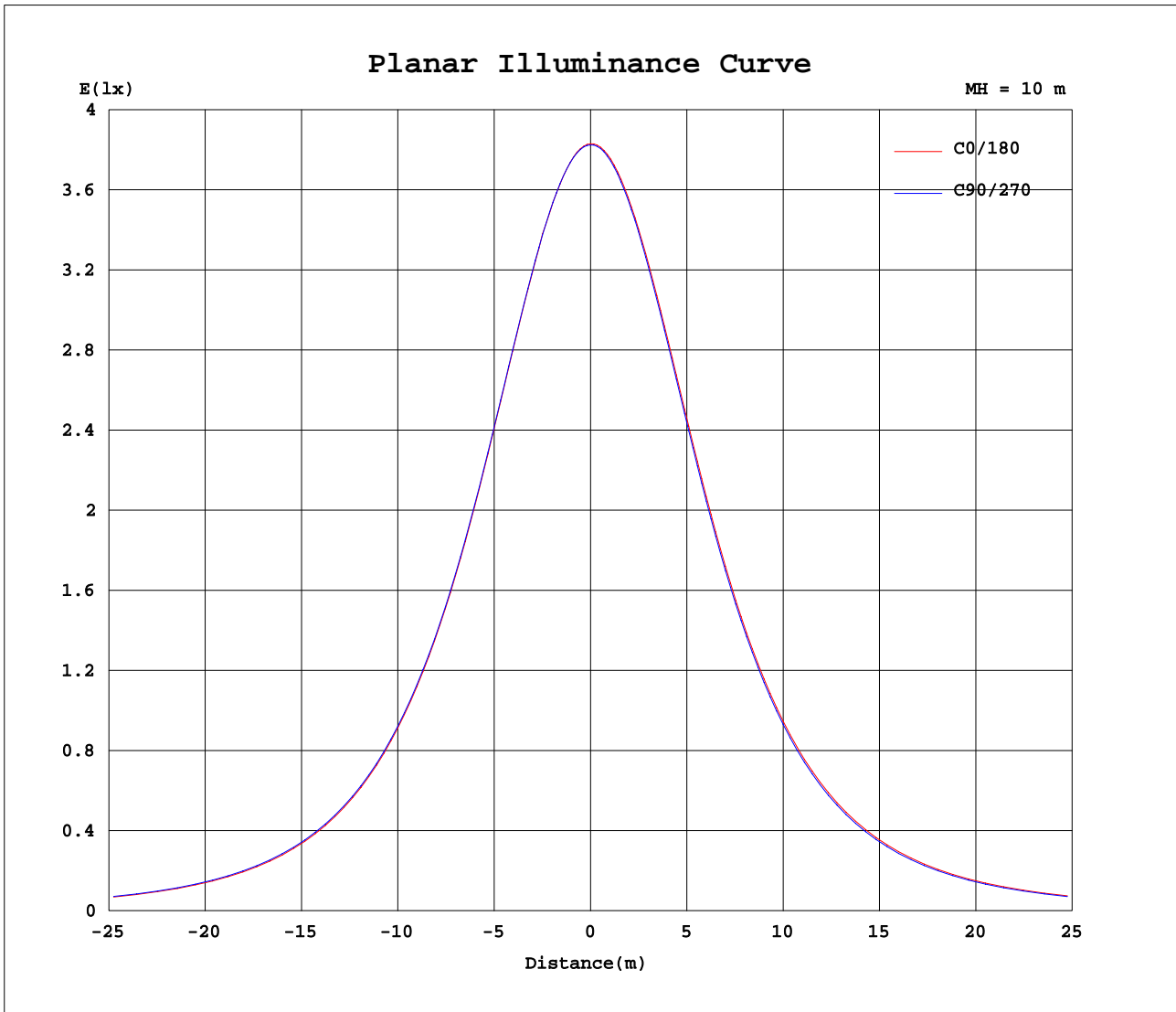
AvgL	cd/m2
L_0~180(65)av	3289
L_0~180(75)av	3577
L_0~180(85)av	6633
L_90~270(65)av	3277
L_90~270(75)av	3550
L_90~270(85)av	6521
L_45(65)av	3282
L_45(75)av	3562
L_45(85)av	6572

Standard: GB/T 29293-2012

C Range: 0 - 360DEG
 C Interval: 22.5DEG
 Test Speed: 10.0deg/s
 Temperature:24.8DEG
 Operators:East
 Test Date:2020-09-09

γ Range: 0 - 180DEG
 γ Interval: 1.0DEG
 Test System:EVERFINE GO-R5000_V2 SYSTEM V2.0.351
 Humidity:35%
 Test Distance:2.492m [K=1.0000]
 Remarks:

Planar Illuminance Curve



C Range: 0 - 360DEG
 C Interval: 22.5DEG
 Test Speed: 10.0deg/s
 Temperature: 24.8DEG
 Operators: East
 Test Date: 2020-09-09

γ Range: 0 - 180DEG
 γ Interval: 1.0DEG
 Test System: EVERFINE GO-R5000_V2 SYSTEM V2.0.351
 Humidity: 35%
 Test Distance: 2.492m [K=1.0000]
 Remarks:

LUMINOUS DISTRIBUTION INTENSITY DATA

Test:U:120.1V I:0.1242A P:14.75W PF:0.9893 Lamp Flux:1323.27x1 lm		
NAME: ASD-LFMDR-MV-12N15CC-MS-XX	TYPE:N/A	WEIGHT:N/A
SPEC.:	DIM.: N/A	SERIAL No.:N/A
MFR.: ASD Lighting corp	SUR.:N/A	Shielding Angle:N/A

Table--1

UNIT: cd

C(DEG)\ γ (DEG)	0	22.5	45	67.5	90	112.5	135	157.5	180	202.5	225	247.5	270	292.5	315	337.5			
0	383	383	383	383	383	383	383	383	383	383	383	383	383	383	383	383			
5	380	380	380	380	381	381	381	382	382	381	382	382	381	381	381	380			
10	375	374	375	375	375	376	377	378	378	378	378	377	377	376	375	375			
15	367	366	366	367	368	368	370	371	371	371	371	370	369	368	367	367			
20	355	355	355	355	357	358	359	361	361	361	361	360	359	357	356	355			
25	341	341	341	341	343	344	346	348	348	348	348	347	345	344	342	341			
30	324	324	324	325	326	328	330	332	332	332	332	330	329	327	325	324			
35	304	304	304	305	306	308	311	313	313	313	312	311	309	307	305	304			
40	282	282	282	283	285	287	289	291	291	291	291	289	288	285	283	281			
45	258	258	258	259	261	263	266	268	267	267	267	265	263	260	258	257			
50	232	232	232	233	235	238	240	243	242	242	241	239	237	234	232	230			
55	204	204	205	206	208	211	213	216	215	214	214	212	209	206	204	203			
60	176	176	177	178	180	183	186	188	187	186	186	184	181	178	176	174			
65	148	148	149	151	153	155	158	160	159	158	157	155	153	150	147	146			
70	121	122	123	124	126	129	131	133	131	131	129	128	125	122	120	119			
75	97.5	98.2	98.9	99.6	101	104	107	109	107	106	105	104	101	98.2	95.9	95.0			
80	77.1	77.8	78.1	78.7	80.0	82.7	85.5	87.5	85.3	84.4	83.7	82.3	80.4	77.8	75.5	74.8			
85	60.0	60.5	60.6	61.0	62.5	64.7	67.3	69.0	67.5	66.9	65.6	64.3	62.8	60.6	59.0	58.4			
90	45.5	46.0	45.7	46.0	47.1	49.0	51.4	53.0	51.9	51.2	50.1	48.8	47.7	46.2	45.1	44.6			
95	34.1	34.2	34.0	33.9	34.7	36.3	38.2	39.5	38.7	38.2	37.4	36.7	35.6	34.8	33.9	33.5			
100	26.7	26.1	26.1	26.0	26.2	27.6	28.9	29.8	30.1	29.8	29.6	28.8	28.0	27.7	26.6	26.1			
105	22.6	22.0	21.5	21.0	21.6	23.0	24.6	25.8	26.6	27.0	27.4	27.3	26.5	25.2	23.5	22.8			
110	21.1	20.1	18.7	17.7	18.6	21.2	23.6	25.3	26.2	26.7	27.0	27.0	26.2	24.8	22.9	21.8			
115	18.8	17.0	14.8	13.3	14.5	17.9	21.6	23.9	25.1	25.7	26.1	26.1	25.3	23.8	21.7	20.1			
120	15.8	12.8	9.93	8.13	9.43	13.6	18.4	21.3	23.1	24.1	24.6	24.4	23.6	22.2	20.0	17.9			
125	12.4	8.66	5.18	2.95	4.16	9.06	14.7	18.4	20.6	21.8	22.4	22.4	21.6	20.1	17.6	15.2			
130	9.31	5.09	1.93	0.40	1.06	5.08	11.1	15.3	17.7	19.1	19.9	19.9	19.2	17.7	15.1	12.4			
135	6.58	2.79	0.98	0.48	0.59	2.65	7.78	12.3	14.7	16.2	17.1	17.1	16.4	15.0	12.5	9.77			
140	4.51	2.00	1.27	0.58	0.69	1.65	5.08	9.43	11.6	13.0	13.9	13.9	13.4	12.1	9.87	7.39			
145	3.29	1.53	1.56	0.90	0.90	1.34	3.37	6.91	9.67	10.1	10.5	10.8	10.2	9.29	7.51	5.43			
150	2.31	1.65	1.64	1.39	1.38	1.38	2.50	5.24	6.85	7.04	7.55	7.83	7.38	6.71	5.44	3.95			
155	2.04	1.69	1.75	1.66	1.65	1.32	2.59	5.37	4.15	4.58	5.13	4.77	4.91	4.78	3.81	3.02			
160	1.58	1.76	1.84	1.75	1.80	1.60	1.60	2.64	2.73	2.94	3.10	2.93	3.00	3.53	2.75	2.53			
165	1.79	1.77	1.80	1.73	1.87	1.49	1.36	2.06	1.96	2.04	1.95	2.41	2.16	2.19	2.06	1.99			
170	1.66	1.25	1.78	1.57	1.34	1.22	1.27	1.72	1.55	1.59	1.43	2.01	1.54	1.89	1.68	1.59			
175	1.44	1.46	0.90	0.81	0.72	0.88	1.03	1.27	1.06	1.06	1.50	1.52	0.90	1.11	1.09	0.87			
180	0.59	0.58	0.58	0.58	0.59	0.59	0.57	0.46	0.59	0.59	0.59	0.59	0.59	0.59	0.59	0.60			

C Range: 0 - 360DEG
 C Interval: 22.5DEG
 Test Speed: 10.0deg/s
 Temperature:24.8DEG
 Operators:East
 Test Date:2020-09-09

γ Range: 0 - 180DEG
 γ Interval: 1.0DEG
 Test System:EVERFINE GO-R5000_V2 SYSTEM V2.0.351
 Humidity:35%
 Test Distance:2.492m [K=1.0000]
 Remarks: