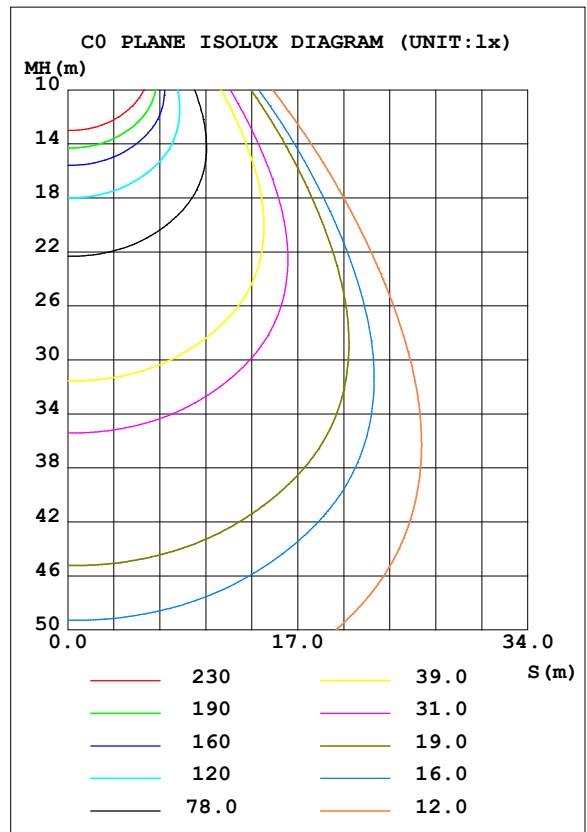
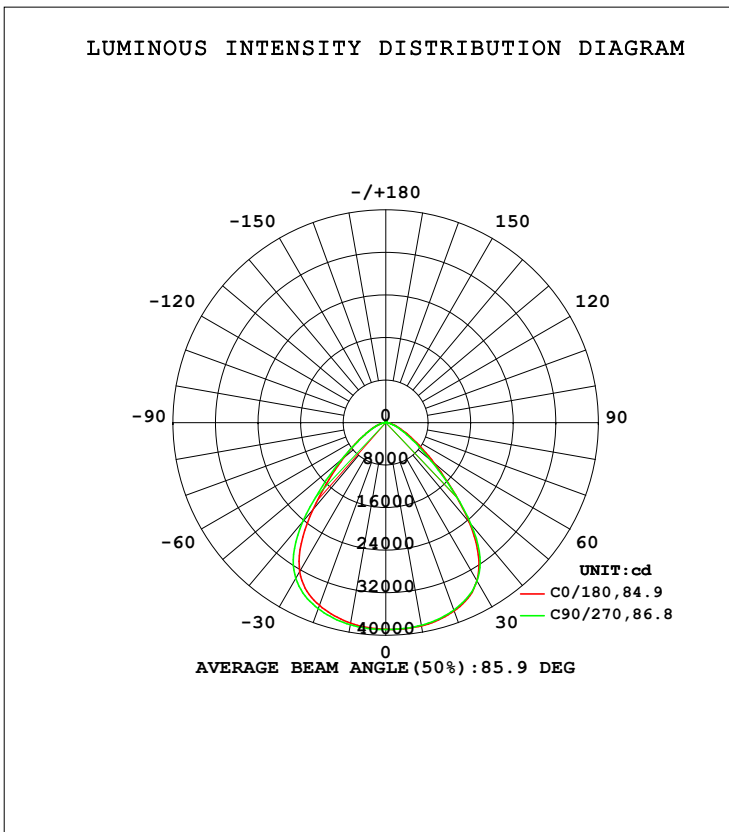


LUMINAIRE PHOTOMETRIC TEST REPORT

Test:U:277.6V I:1.685A P:464.2W PF:0.9924 Freq:59.98Hz Lamp Flux:74808.4x1 lm		
NAME: ASD-UHB3HV-500ADAC-BK500W-4000K	TYPE:	WEIGHT:
SPEC.:	DIM.:	SERIAL No.:
MFR.: ASD Lighting Corp.	SUR.:0.42*0.42m	Shielding Angle:

DATA OF LAMP		PHOTOMETRIC DATA Eff: 161.14 lm/W			
MODEL		I _{max} (cd)	38948	S/MH (C0/180)	1.18
NOMINAL POWER (W)	500	LOR (%)	100.0	S/MH (C90/270)	1.23
RATED VOLTAGE (V)	277	TOTAL FLUX (lm)	74808	<input type="checkbox"/> UP, DN (C0-180)	0.5, 50.3
NOMINAL FLUX (lm)	74808.4	CIE CLASS	DIRECT	<input type="checkbox"/> UP, DN (C180-360)	0.5, 48.7
LAMPS INSIDE	1	<input type="checkbox"/> up (%)	1.0	CIBSE SHR NOM	1.25
TEST VOLTAGE (V)	277	<input type="checkbox"/> down (%)	99.0	CIBSE SHR MAX	1.25



C Range: 0 - 360DEG
 C Interval: 45.0DEG
 Test Speed: HIGH
 Temperature: 27DEG
 Operators: lianghaizhu
 Test Date: 2023-04-27

Range: 0 - 180DEG
 Interval: 1.0DEG
 Test System: EVERFINE GO-2000A_V1 SYSTEM V2.0.364
 Humidity: 56%
 Test Distance: 6.500m [K=1.0000]
 Remarks:

ZONAL FLUX DIAGRAM

ZONAL FLUX DIAGRAM:

mm	C0	C45	C90	C135	C180	C225	C270	C315	mm	□ zone	□ total	%lum, lamp
10	3881	3878	3867	3851	3828	3839	3858	3876	0- 10	3700	3700	4.95,4.95
20	3766	3765	3748	3696	3655	3686	3720	3745	10- 20	10758	14458	19.3,19.3
30	3429	3441	3435	3321	3237	3329	3384	3385	20- 30	16511	30968	41.4,41.4
40	2441	2434	2497	2280	2132	2290	2424	2356	30- 40	18317	49285	65.9,65.9
50	1200	1181	1115	1124	1038	1082	1095	1147	40- 50	12960	62245	83.2,83.2
60	539.7	533.6	470.0	511.5	464.3	493.3	457.6	522.7	50- 60	6864	69109	92.4,92.4
70	231.6	224.9	196.0	214.2	198.3	206.1	192.2	219.5	60- 70	3318	72427	96.8,96.8
80	74.27	67.64	60.60	65.51	60.82	64.68	61.26	68.47	70- 80	1372	73799	98.7,98.7
90	4.011	3.961	4.036	4.459	4.641	4.362	3.890	3.825	80- 90	279.8	74079	99,99
100	4.457	4.455	4.536	4.782	4.884	4.661	4.358	4.297	90-100	46.47	74126	99.1,99.1
110	5.854	6.072	6.202	6.268	6.178	6.034	5.981	5.800	100-110	54.13	74180	99.2,99.2
120	9.292	9.554	9.763	9.810	9.700	9.534	9.481	9.221	110-120	76.60	74256	99.3,99.3
130	13.25	13.50	13.74	13.80	13.71	13.47	13.46	13.14	120-130	102.9	74359	99.4,99.4
140	17.15	17.37	17.55	17.69	17.73	17.42	17.42	17.11	130-140	119.5	74479	99.6,99.6
150	20.73	20.94	21.07	21.27	21.48	21.14	21.09	20.84	140-150	120.5	74599	99.7,99.7
160	24.53	24.62	24.88	24.87	25.41	25.03	25.03	24.73	150-160	105.7	74705	99.9,99.9
170	28.37	28.28	28.56	28.41	28.99	28.59	28.73	28.39	160-170	75.39	74780	100,100
180	30.44	30.17	30.39	30.13	30.43	30.19	30.38	30.14	170-180	28.02	74808	100,100
DEG	LUMINOUS INTENSITY:×10cd									UNIT:lm		

Conical surface Flux(90deg): 56683 lm

%lum = 75.8%

%lamp = 75.8%

Conical surface Flux(120deg): 69109 lm

%lum = 92.4%

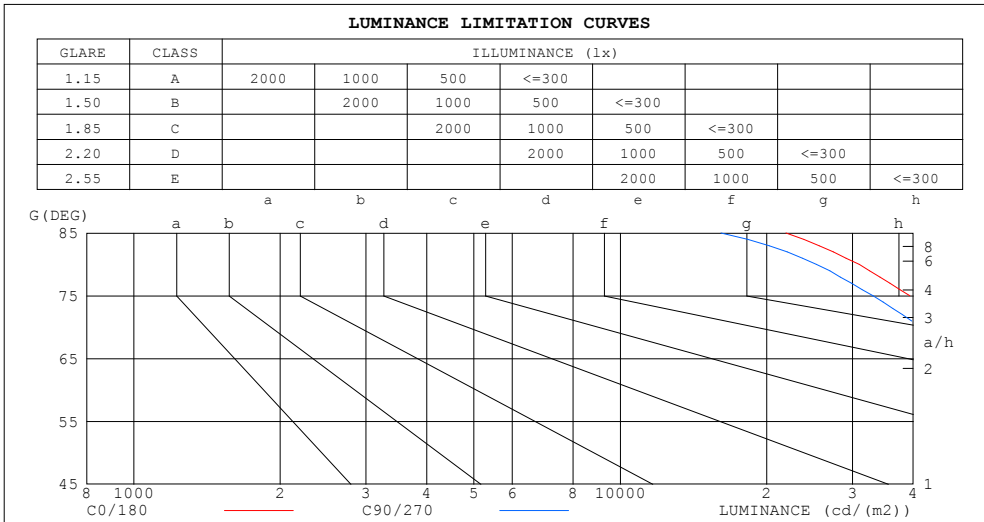
%lamp = 92.4%

C Range: 0 - 360DEG
 C Interval: 45.0DEG
 Test Speed: HIGH
 Temperature:27DEG
 Operators:lianghaizhu
 Test Date:2023-04-27

□ Range: 0 - 180DEG
 □ Interval: 1.0DEG
 Test System:EVERFINE GO-2000A_V1 SYSTEM V2.0.364
 Humidity:56%
 Test Distance:6.500m [K=1.0000]
 Remarks:

LUMINANCE LIMITATION CURVES

Test:U:277.6V I:1.685A P:464.2W PF:0.9924 Freq:59.98Hz Lamp Flux:74808.4x1 lm		
NAME: ASD-UHB3HV-500ADAC-BK500W-4000K	TYPE:	WEIGHT:
SPEC.:	DIM.:	SERIAL No.:
MFR.: ASD Lighting Corp.	SUR.:0.42*0.42m	Shielding Angle:



LUMINANCE cd/(m2)		
G (DEG)	C0/180	C90/270
85	21911	16115
80	30995	25289
75	39382	33075
70	49063	41532
65	61120	52327
60	78223	68115
55	101605	91130
50	135231	125653
45	180036	177839

C Range: 0 - 360DEG
 C Interval: 45.0DEG
 Test Speed: HIGH
 Temperature:27DEG
 Operators:lianghaizhu
 Test Date:2023-04-27

Range: 0 - 180DEG
 Interval: 1.0DEG
 Test System:EVERFINE GO-2000A_V1 SYSTEM V2.0.364
 Humidity:56%
 Test Distance:6.500m [K=1.0000]
 Remarks:

WEC AND CCEC

Test:U:277.6V I:1.685A P:464.2W PF:0.9924 Freq:59.98Hz Lamp Flux:74808.4x1 lm		
NAME: ASD-UHB3HV-500ADAC-BK500W-4000K	TYPE:	WEIGHT:
SPEC.:	DIM.:	SERIAL No.:
MFR.: ASD Lighting Corp.	SUR.:0.42*0.42m	Shielding Angle:

<input type="checkbox"/> cc	80%	70%	50%	30%	10%	0
<input type="checkbox"/> w	50% 30% 10%	50% 30% 10%	50% 30% 10%	50% 30% 10%	50% 30% 10%	0
<input type="checkbox"/> fc	20%	20%	20%	20%	20%	0
RCR	RCR:Room Cavity Ratio		Wall Exitance Coefficients (WEC)			
0.0						
1.0	.234 .133 .042	.227 .129 .041	.214 .123 .039	.201 .116 .037	.190 .110 .035	
2.0	.227 .124 .038	.221 .122 .037	.209 .116 .036	.198 .111 .035	.188 .107 .034	
3.0	.216 .115 .034	.210 .113 .034	.200 .108 .033	.191 .104 .032	.182 .101 .031	
4.0	.204 .106 .031	.199 .104 .031	.190 .101 .030	.182 .098 .029	.174 .095 .029	
5.0	.192 .098 .028	.188 .097 .028	.180 .094 .028	.173 .091 .027	.166 .089 .027	
6.0	.182 .091 .026	.178 .090 .026	.171 .088 .025	.164 .085 .025	.158 .083 .025	
7.0	.172 .085 .024	.168 .084 .024	.162 .082 .024	.156 .080 .023	.151 .078 .023	
8.0	.163 .079 .022	.160 .079 .022	.154 .077 .022	.149 .075 .022	.143 .074 .021	
9.0	.154 .075 .021	.152 .074 .021	.146 .072 .021	.142 .071 .020	.137 .070 .020	
10.0	.147 .070 .020	.144 .070 .019	.139 .068 .019	.135 .067 .019	.131 .066 .019	

<input type="checkbox"/> cc	80%	70%	50%	30%	10%	0
<input type="checkbox"/> w	50% 30% 10%	50% 30% 10%	50% 30% 10%	50% 30% 10%	50% 30% 10%	0
<input type="checkbox"/> fc	20%	20%	20%	20%	20%	0
RCR	RCR:Room Cavity Ratio		Ceiling Cavity Exitance Coefficients (CCEC)			
0.0	.198 .198 .198	.169 .169 .169	.115 .115 .115	.066 .066 .066	.021 .021 .021	
1.0	.183 .164 .148	.156 .141 .127	.107 .097 .088	.061 .056 .051	.020 .018 .017	
2.0	.171 .140 .113	.147 .120 .098	.100 .083 .068	.058 .048 .040	.019 .016 .013	
3.0	.162 .122 .090	.139 .105 .078	.095 .073 .054	.055 .043 .032	.018 .014 .011	
4.0	.153 .108 .073	.132 .093 .063	.090 .065 .044	.052 .038 .026	.017 .012 .009	
5.0	.146 .097 .060	.125 .084 .053	.086 .058 .037	.050 .034 .022	.016 .011 .007	
6.0	.139 .088 .051	.120 .076 .045	.082 .053 .032	.048 .031 .019	.015 .010 .006	
7.0	.133 .081 .045	.114 .070 .039	.079 .049 .028	.046 .029 .016	.015 .009 .005	
8.0	.127 .075 .039	.109 .065 .034	.076 .046 .024	.044 .027 .014	.014 .009 .005	
9.0	.122 .070 .035	.105 .061 .031	.073 .043 .022	.042 .025 .013	.014 .008 .004	
10.0	.117 .066 .032	.101 .057 .028	.070 .040 .020	.041 .024 .012	.013 .008 .004	

C Range: 0 - 360DEG
 C Interval: 45.0DEG
 Test Speed: HIGH
 Temperature:27DEG
 Operators:lianghaizhu
 Test Date:2023-04-27

Range: 0 - 180DEG
 Interval: 1.0DEG
 Test System:EVERFINE GO-2000A_V1 SYSTEM V2.0.364
 Humidity:56%
 Test Distance:6.500m [K=1.0000]
 Remarks:

UGR(Unified Glare Rating) Table

Test:U:277.6V I:1.685A P:464.2W PF:0.9924 Freq:59.98Hz Lamp Flux:74808.4x1 lm		
NAME: ASD-UHB3HV-500ADAC-BK500W-4000K	TYPE:	WEIGHT:
SPEC.:	DIM.:	SERIAL No.:
MFR.: ASD Lighting Corp.	SUR.:0.42*0.42m	Shielding Angle:

ceiling/cavity	0.7	0.7	0.5	0.5	0.3	0.7	0.7	0.5	0.5	0.3
walls	0.5	0.3	0.5	0.3	0.3	0.5	0.3	0.5	0.3	0.3
working plane	0.2	0.2	0.2	0.2	0.2	0.2	0.2	0.2	0.2	0.2
Room dimensions	Viewed crosswise					Viewed endwise				
x = 2H y = 2H	28.3	29.5	28.6	29.8	30.0	28.1	29.3	28.3	29.5	29.8
3H	28.6	29.7	28.9	30.0	30.2	28.3	29.5	28.6	29.7	29.9
4H	28.7	29.8	29.0	30.0	30.3	28.4	29.4	28.7	29.7	30.0
6H	28.7	29.7	29.0	30.0	30.3	28.4	29.4	28.7	29.6	29.9
8H	28.7	29.7	29.0	30.0	30.2	28.3	29.3	28.7	29.6	29.9
12H	28.7	29.6	29.0	29.9	30.2	28.3	29.2	28.7	29.5	29.8
4H 2H	28.4	29.4	28.7	29.7	30.0	28.2	29.3	28.5	29.5	29.8
3H	28.8	29.7	29.1	30.0	30.3	28.5	29.4	28.9	29.7	30.1
4H	28.9	29.8	29.3	30.1	30.4	28.6	29.5	29.0	29.8	30.1
6H	29.0	29.8	29.4	30.1	30.5	28.7	29.4	29.1	29.8	30.2
8H	29.0	29.7	29.4	30.1	30.5	28.7	29.4	29.1	29.7	30.1
12H	29.0	29.6	29.4	30.0	30.5	28.7	29.3	29.1	29.7	30.1
8H 4H	28.9	29.6	29.3	30.0	30.4	28.6	29.3	29.0	29.7	30.1
6H	29.0	29.6	29.5	30.0	30.5	28.7	29.3	29.2	29.7	30.1
8H	29.1	29.6	29.6	30.0	30.5	28.7	29.2	29.2	29.7	30.1
12H	29.1	29.5	29.6	30.0	30.5	28.7	29.2	29.2	29.6	30.1
12H 4H	28.9	29.5	29.3	29.9	30.3	28.6	29.2	29.0	29.6	30.0
6H	29.0	29.5	29.5	30.0	30.4	28.7	29.2	29.2	29.6	30.1
8H	29.1	29.5	29.6	30.0	30.4	28.7	29.2	29.2	29.6	30.1
Variations with the observer position at spacings:										
S = 1.0H	+ 1.0 / - 1.4					+ 1.1 / - 1.7				
1.5H	+ 1.1 / - 1.0					+ 1.3 / - 1.1				
2.0H	+ 2.2 / - 1.7					+ 2.4 / - 1.8				

CIE Pub.117, 74808 lm Total Lamp Luminous Flux Corrected (8log(F/F0) = 15.0)

C Range: 0 - 360DEG
 C Interval: 45.0DEG
 Test Speed: HIGH
 Temperature:27DEG
 Operators:lianghaizhu
 Test Date:2023-04-27

Range: 0 - 180DEG
 Interval: 1.0DEG
 Test System:EVERFINE GO-2000A_V1 SYSTEM V2.0.364
 Humidity:56%
 Test Distance:6.500m [K=1.0000]
 Remarks:

UTILIZATION FACTORS TABLE

Test:U:277.6V I:1.685A P:464.2W PF:0.9924 Freq:59.98Hz Lamp Flux:74808.4x1 lm		
NAME: ASD-UHB3HV-500ADAC-BK500W-4000K	TYPE:	WEIGHT:
SPEC.:	DIM.:	SERIAL No.:
MFR.: ASD Lighting Corp.	SUR.:0.42*0.42m	Shielding Angle:

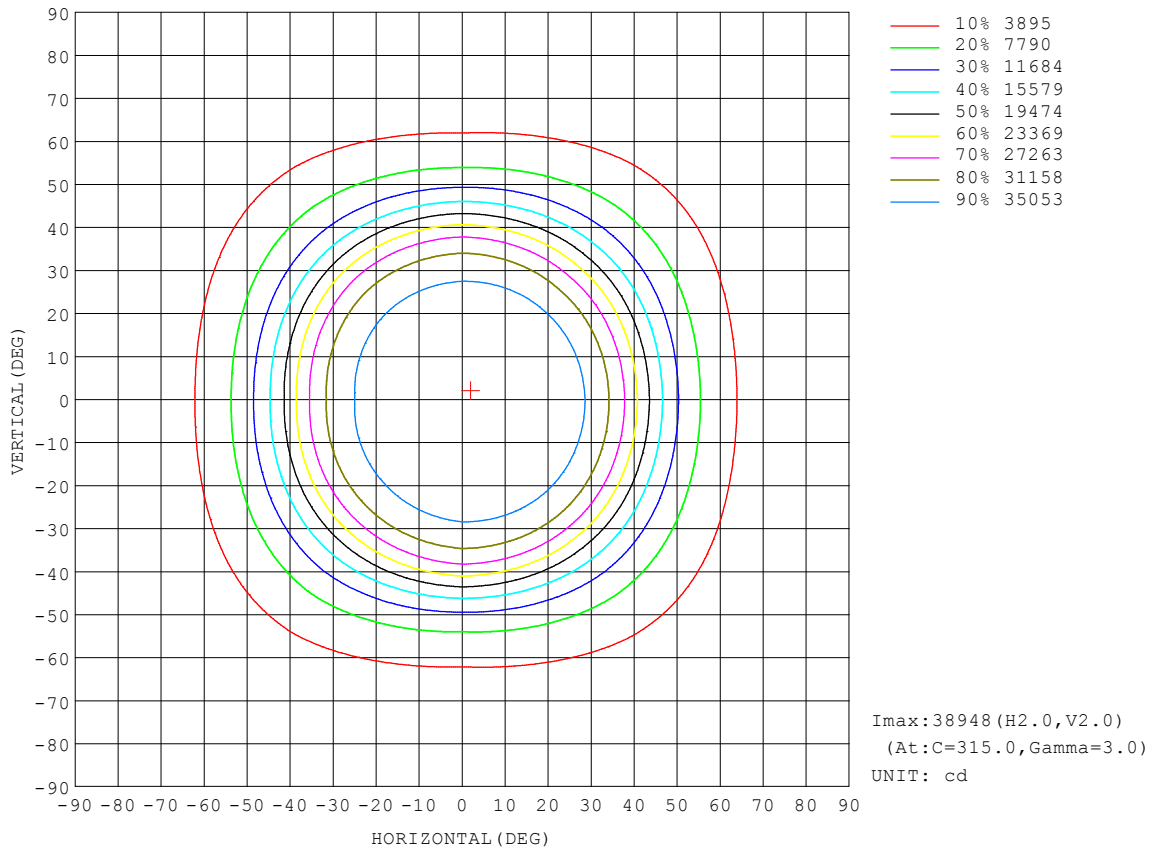
REFLECTANCE										
Ceiling	0.8	0.8	0.8	0.7	0.7	0.7	0.5	0.5	0.5	0
Walls	0.7	0.5	0.3	0.7	0.5	0.3	0.7	0.5	0.3	0
Working plane	0.2	0.2	0.2	0.2	0.2	0.2	0.2	0.2	0.2	0
ROOM INDEX	UTILIZATION FACTORS (PERCENT) $k(RI) \times RCR = 5$									
k = 0.60	70	61	55	69	60	55	68	60	55	49
0.80	80	71	65	79	70	65	77	69	64	59
1.00	87	79	73	86	78	73	84	79	72	66
1.25	93	85	80	92	85	79	89	83	79	73
1.50	97	90	85	96	89	84	93	87	83	77
2.00	102	96	91	100	95	90	97	93	89	82
2.50	105	99	95	103	98	94	99	95	92	85
3.00	107	102	98	105	101	97	101	98	95	87
4.00	110	106	103	108	104	101	104	101	98	90
5.00	112	108	105	109	106	104	105	103	100	92
ROOM INDEX	UF(total)									Direct
According to DIN EN 13032-2 2004			Suspended				SHRNOM = 1.25			

C Range: 0 - 360DEG
 C Interval: 45.0DEG
 Test Speed: HIGH
 Temperature:27DEG
 Operators:lianghaizhu
 Test Date:2023-04-27

Range: 0 - 180DEG
 Interval: 1.0DEG
 Test System:EVERFINE GO-2000A_V1 SYSTEM V2.0.364
 Humidity:56%
 Test Distance:6.500m [K=1.0000]
 Remarks:

ISOCANDELA DIAGRAM

Test:U:277.6V I:1.685A P:464.2W PF:0.9924 Freq:59.98Hz Lamp Flux:74808.4x1 lm		
NAME: ASD-UHB3HV-500ADAC-BK500W-4000K	TYPE:	WEIGHT:
SPEC.:	DIM.:	SERIAL No.:
MFR.: ASD Lighting Corp.	SUR.:0.42*0.42m	Shielding Angle:

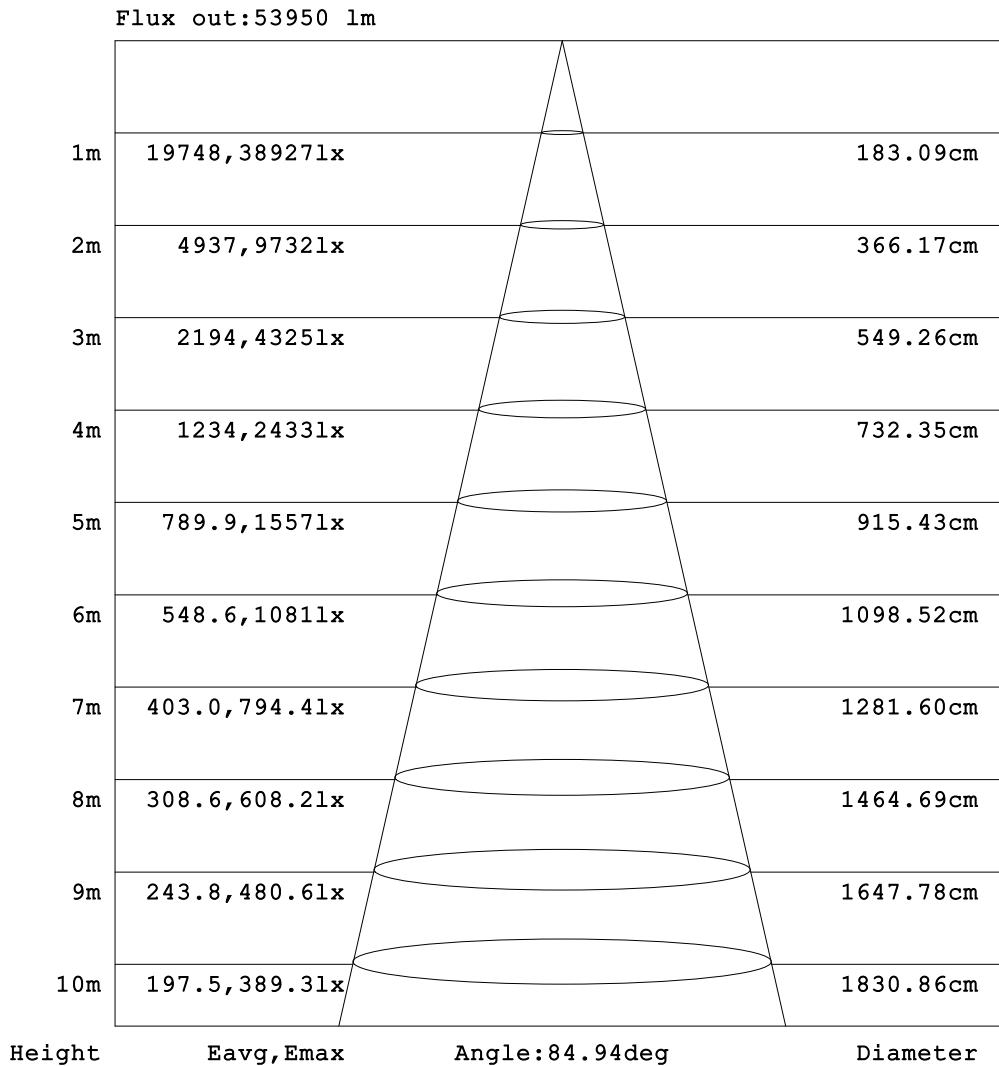


C Range: 0 - 360DEG
 C Interval: 45.0DEG
 Test Speed: HIGH
 Temperature:27DEG
 Operators:lianghaizhu
 Test Date:2023-04-27

Range: 0 - 180DEG
 Interval: 1.0DEG
 Test System:EVERFINE GO-2000A_V1 SYSTEM V2.0.364
 Humidity:56%
 Test Distance:6.500m [K=1.0000]
 Remarks:

AAI Figure

Test:U:277.6V I:1.685A P:464.2W PF:0.9924 Freq:59.98Hz Lamp Flux:74808.4x1 lm		
NAME: ASD-UHB3HV-500ADAC-BK500W-4000K	TYPE:	WEIGHT:
SPEC.:	DIM.:	SERIAL No.:
MFR.: ASD Lighting Corp.	SUR.:0.42*0.42m	Shielding Angle:

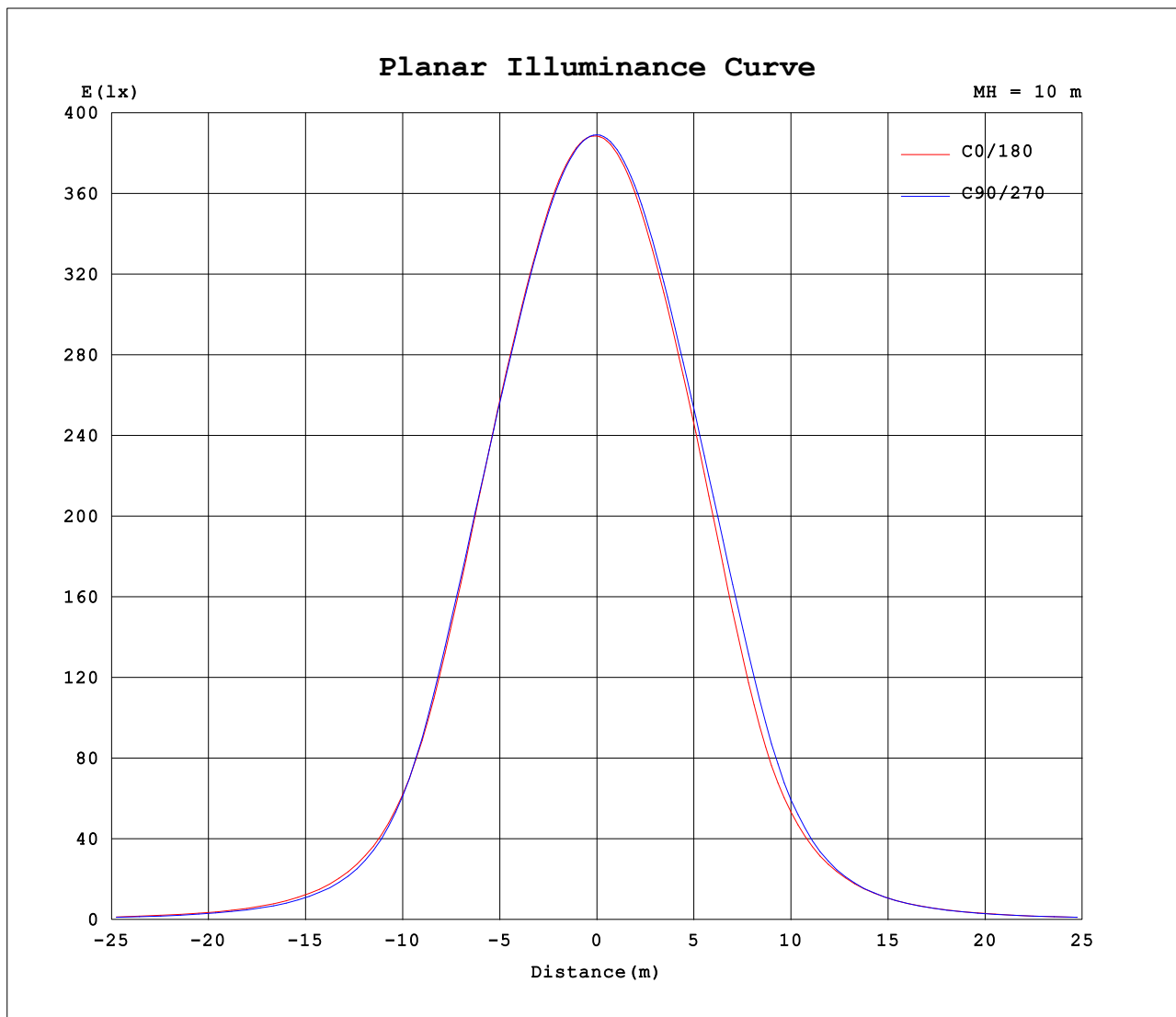


Note:The Curves indicate the illuminated area and the average illumination when the luminaire is at different distance.

C Range: 0 - 360DEG
 C Interval: 45.0DEG
 Test Speed: HIGH
 Temperature:27DEG
 Operators:lianghaizhu
 Test Date:2023-04-27

Range: 0 - 180DEG
 Interval: 1.0DEG
 Test System:EVERFINE GO-2000A_V1 SYSTEM V2.0.364
 Humidity:56%
 Test Distance:6.500m [K=1.0000]
 Remarks:

Planar Illuminance Curve



C Range: 0 - 360DEG
C Interval: 45.0DEG
Test Speed: HIGH
Temperature: 27DEG
Operators: lianghaizhu
Test Date: 2023-04-27

Range: 0 - 180DEG
 Interval: 1.0DEG
Test System: EVERFINE GO-2000A_V1 SYSTEM V2.0.364
Humidity: 56%
Test Distance: 6.500m [K=1.0000]
Remarks:

LUMINOUS DISTRIBUTION INTENSITY DATA

Test:U:277.6V I:1.685A P:464.2W PF:0.9924 Freq:59.98Hz Lamp Flux:74808.4x1 lm		
NAME: ASD-UHB3HV-500ADAC-BK500W-4000K	TYPE:	WEIGHT:
SPEC.:	DIM.:	SERIAL No.:
MFR.: ASD Lighting Corp.	SUR.:0.42*0.42m	Shielding Angle:

Table--1

UNIT: x10cd

C (DEG) □ (DEG)	0	45	90	135	180	225	270	315											
0	3886	3889	3891	3893	3886	3889	3891	3893											
5	3891	3891	3887	3880	3867	3874	3884	3893											
10	3881	3878	3867	3851	3828	3839	3858	3876											
15	3842	3843	3825	3790	3755	3777	3806	3829											
20	3766	3765	3748	3696	3655	3686	3720	3745											
25	3648	3644	3630	3558	3503	3555	3594	3616											
30	3429	3441	3435	3321	3237	3329	3384	3385											
35	3038	3064	3088	2913	2777	2930	3024	2979											
40	2441	2434	2497	2280	2132	2290	2424	2356											
45	1757	1718	1735	1629	1514	1600	1682	1678											
50	1200	1181	1115	1124	1038	1082	1095	1147											
55	804	799	721	765	700	738	704	775											
60	540	534	470	511	464	493	458	523											
65	356	350	305	334	305	321	298	343											
70	232	225	196	214	198	206	192	220											
75	141	133	118	127	119	124	117	131											
80	74.3	67.6	60.6	65.5	60.8	64.7	61.3	68.5											
85	26.4	21.6	19.4	20.8	18.8	21.8	21.1	23.1											
90	4.01	3.96	4.04	4.46	4.64	4.36	3.89	3.83											
95	4.10	4.07	4.14	4.48	4.60	4.37	4.00	3.93											
100	4.46	4.46	4.54	4.78	4.88	4.66	4.36	4.30											
105	4.93	5.00	5.08	5.25	5.19	5.07	4.87	4.83											
110	5.85	6.07	6.20	6.27	6.18	6.03	5.98	5.80											
115	7.48	7.73	7.90	7.96	7.86	7.70	7.66	7.42											
120	9.29	9.55	9.76	9.81	9.70	9.53	9.48	9.22											
125	11.2	11.5	11.7	11.8	11.7	11.5	11.4	11.1											
130	13.2	13.5	13.7	13.8	13.7	13.5	13.5	13.1											
135	15.2	15.5	15.7	15.8	15.7	15.5	15.5	15.1											
140	17.1	17.4	17.5	17.7	17.7	17.4	17.4	17.1											
145	19.0	19.2	19.3	19.5	19.6	19.3	19.3	19.0											
150	20.7	20.9	21.1	21.3	21.5	21.1	21.1	20.8											
155	22.6	22.7	22.9	23.0	23.4	23.1	23.0	22.7											
160	24.5	24.6	24.9	24.9	25.4	25.0	25.0	24.7											
165	26.5	26.5	26.8	26.7	27.4	27.0	27.1	26.7											
170	28.4	28.3	28.6	28.4	29.0	28.6	28.7	28.4											
175	29.8	29.6	29.8	29.7	30.1	29.7	29.9	29.6											
180	30.4	30.2	30.4	30.1	30.4	30.2	30.4	30.1											

C Range: 0 - 360DEG
 C Interval: 45.0DEG
 Test Speed: HIGH
 Temperature:27DEG
 Operators:lianghaizhu
 Test Date:2023-04-27

□ Range: 0 - 180DEG
 □ Interval: 1.0DEG
 Test System:EVERFINE GO-2000A_V1 SYSTEM V2.0.364
 Humidity:56%
 Test Distance:6.500m [K=1.0000]
 Remarks: