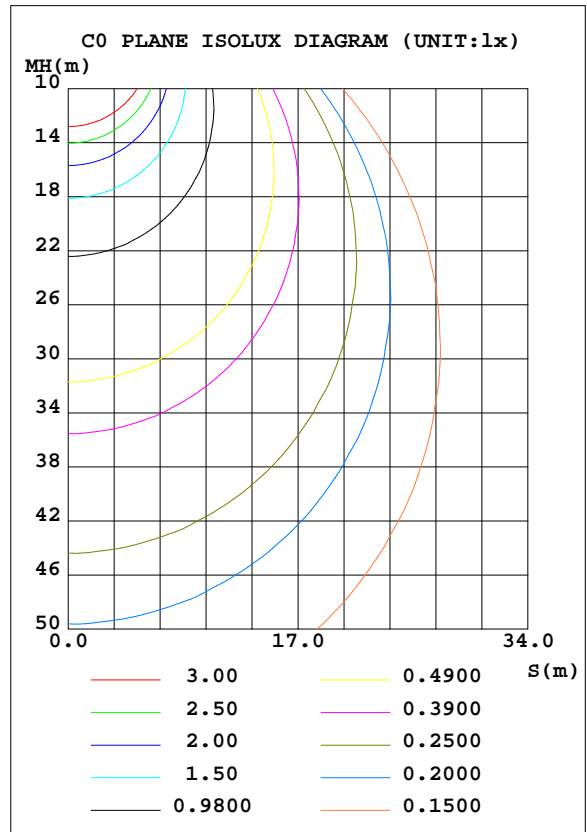
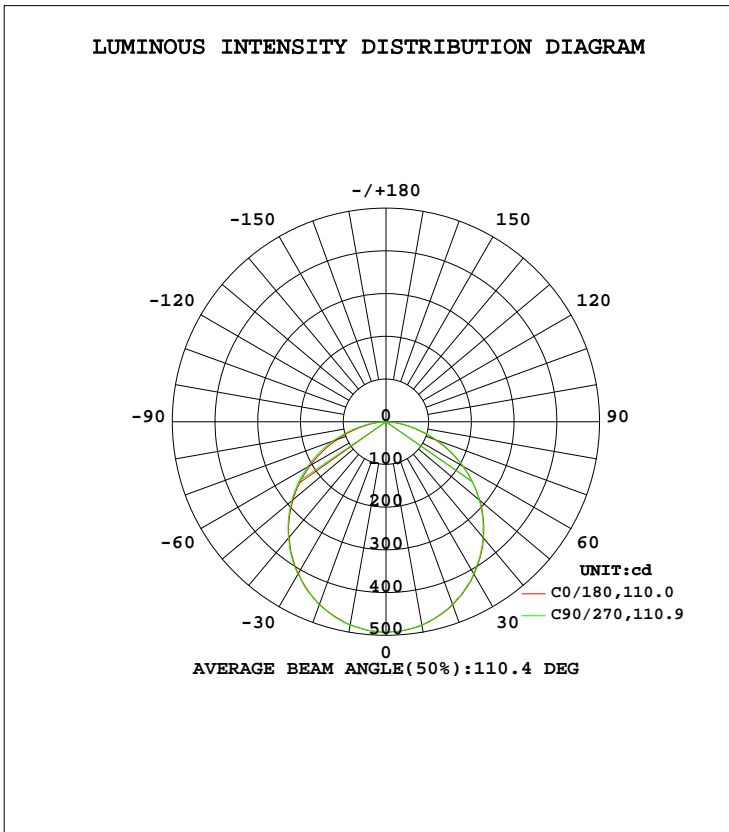


LUMINAIRE PHOTOMETRIC TEST REPORT

Test:U:120.1V I:0.1576A P:17.67W PF:0.9334 Lamp Flux:1370.49x1 lm		
NAME: LED luminaire	TYPE:N/A	WEIGHT:N/A
SPEC.:ASD-MPS-9D18CC-BK 5000K	DIM.: N/A	SERIAL No.:N/A
MFR.: ASD LIGHTING CORP	SUR.:N/A	Shielding Angle:N/A

DATA OF LAMP		PHOTOMETRIC DATA			
MODEL	PSZ2S230215007-10	Imax(cd)	492.9	S/MH(C0/180)	1.24
NOMINAL POWER(W)		LOR(%)	100.0	S/MH(C90/270)	1.24
RATED VOLTAGE(V)	120	TOTAL FLUX(lm)	1370.5	η UP, DN(C0-180)	0.1,50.3
NOMINAL FLUX(lm)	1370.49	CIE CLASS	DIRECT	η UP, DN(C180-360)	0.0,49.6
LAMPS INSIDE	1	η up(%)	0.1	CIBSE SHR NOM	1.25
TEST VOLTAGE(V)	120	η down(%)	99.9	CIBSE SHR MAX	1.35



C Range: 0 - 360DEG
 C Interval: 22.5DEG
 Test Speed: HIGH
 Temperature:24.6DEG
 Operators:Evan
 Test Date:2023-02-22

γ Range: 0 - 180DEG
 γ Interval: 1.0DEG
 Test System:EVERFINE GO-R5000_V2 SYSTEM V2.0.351
 Humidity:51%
 Test Distance:2.532m [K=1.0000]
 Remarks:

ZONAL FLUX DIAGRAM

ZONAL FLUX DIAGRAM:

γ	C0	C45	C90	C135	C180	C225	C270	C315	γ	Φ zone	Φ total	%lum,lamp
10	482.5	483.0	483.0	483.6	483.2	483.5	482.8	482.4	0- 10	46.54	46.54	3.4,3.4
20	454.5	455.4	457.3	456.5	455.9	455.7	454.3	453.8	10- 20	132.9	179.5	13.1,13.1
30	410.4	411.1	412.2	413.3	412.3	411.8	410.6	409.2	20- 30	200.5	380.0	27.7,27.7
40	353.2	354.1	355.5	356.6	355.0	354.4	353.5	351.6	30- 40	240.4	620.3	45.3,45.3
50	283.9	286.8	289.0	289.6	286.7	286.4	284.7	283.4	40- 50	247.9	868.2	63.3,63.3
60	205.1	209.8	212.9	213.2	207.3	209.5	208.5	205.9	50- 60	221.9	1090	79.5,79.5
70	121.9	127.2	133.1	130.1	123.2	125.5	127.2	122.5	60- 70	166.1	1256	91.7,91.7
80	45.01	49.83	56.28	52.14	45.74	47.18	50.50	45.41	70- 80	91.32	1348	98.3,98.3
90	0.1033	0.1619	2.481	0.1874	0.0333	0.0256	0.0264	0.0298	80- 90	21.51	1369	99.9,99.9
100	0.1182	0.1369	0.1238	0.1439	0.0489	0.0650	0.0548	0.0710	90-100	0.0900	1369	99.9,99.9
110	0.1413	0.1559	0.1474	0.1531	0.0848	0.0874	0.0856	0.0911	100-110	0.1114	1369	99.9,99.9
120	0.1843	0.1953	0.1920	0.1922	0.1223	0.1241	0.1250	0.1263	110-120	0.1340	1369	99.9,99.9
130	0.2669	0.2769	0.2823	0.2789	0.1770	0.1795	0.1738	0.1758	120-130	0.1703	1370	99.9,99.9
140	0.4111	0.4425	0.4457	0.4335	0.2355	0.2384	0.2328	0.2350	130-140	0.2113	1370	99.9,99.9
150	0.5855	0.6373	0.6521	0.6228	0.2759	0.2850	0.2921	0.2844	140-150	0.2491	1370	100,100
160	0.7468	0.7657	0.7602	0.7609	0.3715	0.3733	0.3613	0.3528	150-160	0.2362	1370	100,100
170	0.7064	0.7108	0.7164	0.7113	0.4567	0.4246	0.4147	0.4337	160-170	0.1626	1370	100,100
180	0.5893	0.5546	0.5382	0.5942	0.5910	0.5757	0.5438	0.5619	170-180	0.0546	1370	100,100
DEG	LUMINOUS INTENSITY:cd									UNIT:lm		

Conical surface Flux(90deg): 745.42 lm

%lum = 54.4%
%lamp = 54.4%

Conical surface Flux(120deg): 1090.1 lm

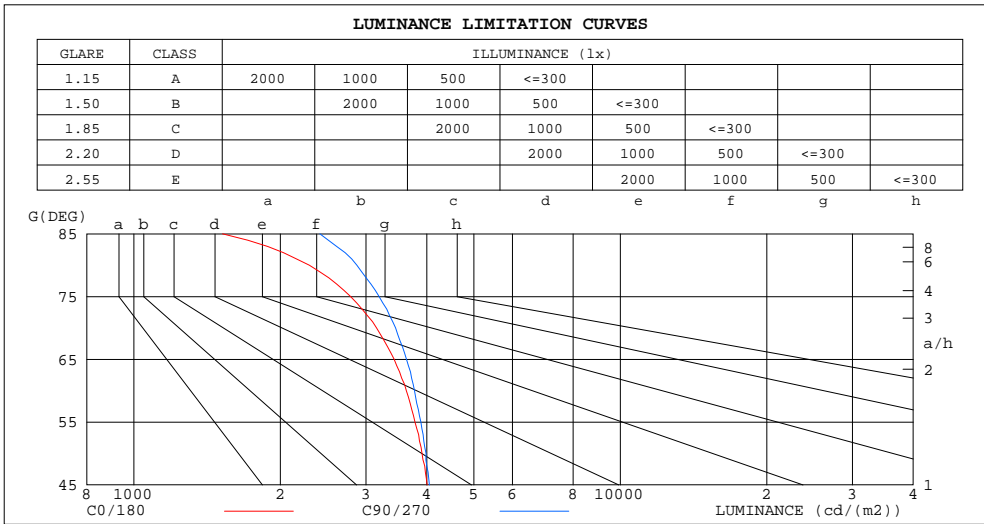
%lum = 79.5%
%lamp = 79.5%

C Range: 0 - 360DEG
C Interval: 22.5DEG
Test Speed: HIGH
Temperature:24.6DEG
Operators:Evan
Test Date:2023-02-22

γ Range: 0 - 180DEG
γ Interval: 1.0DEG
Test System:EVERFINE GO-R5000_V2 SYSTEM V2.0.351
Humidity:51%
Test Distance:2.532m [K=1.0000]
Remarks:

LUMINANCE LIMITATION CURVES

Test:U:120.1V I:0.1576A P:17.67W PF:0.9334 Lamp Flux:1370.49x1 lm		
NAME: LED luminaire	TYPE:N/A	WEIGHT:N/A
SPEC.:ASD-MPS-9D18CC-BK 5000K	DIM.: N/A	SERIAL No.:N/A
MFR.:ASD LIGHTING CORP	SUR.:N/A	Shielding Angle:N/A



LUMINANCE cd/(m2)		
G(DEG)	C0/180	C90/270
85	1522	2411
80	2295	2873
75	2790	3194
70	3155	3451
65	3427	3635
60	3631	3775
55	3783	3889
50	3910	3986
45	4006	4051

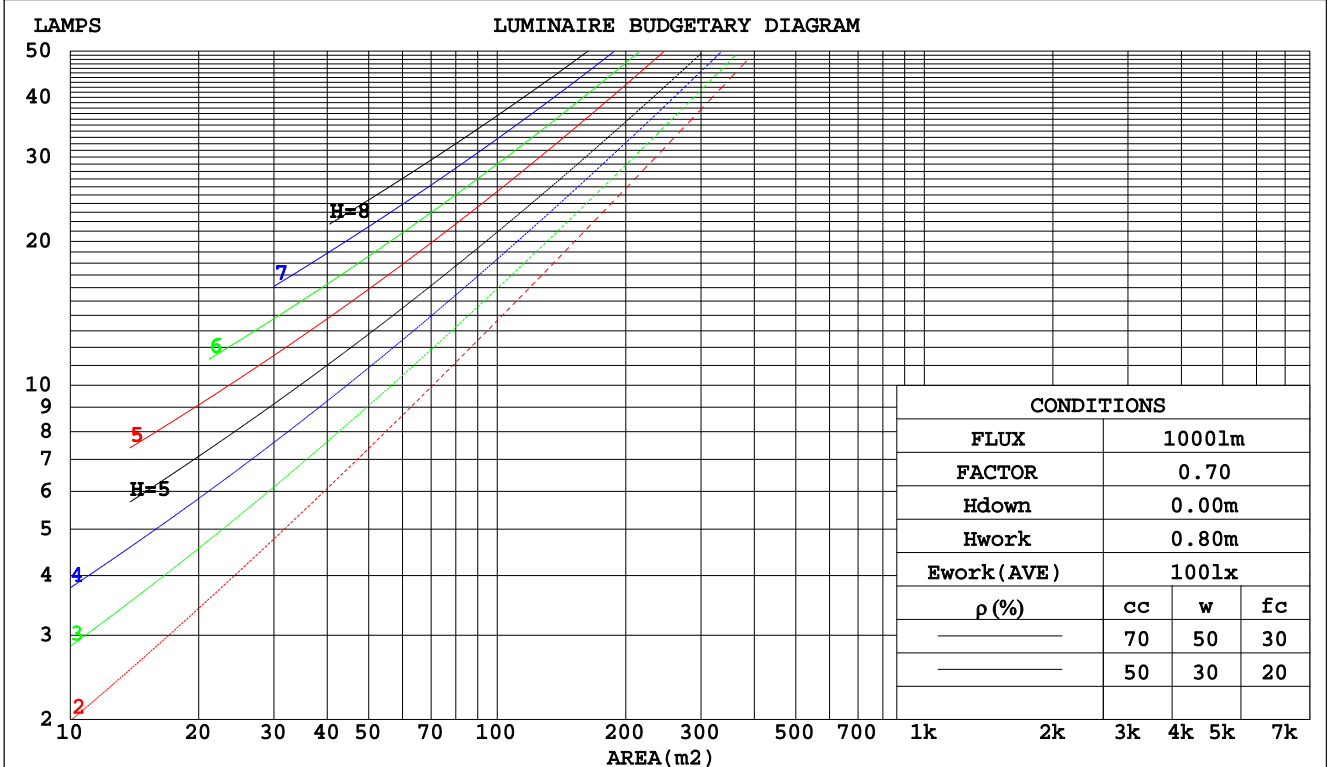
C Range: 0 - 360DEG
 C Interval: 22.5DEG
 Test Speed: HIGH
 Temperature:24.6DEG
 Operators:Evan
 Test Date:2023-02-22

γ Range: 0 - 180DEG
 γ Interval: 1.0DEG
 Test System:EVERFINE GO-R5000_V2 SYSTEM V2.0.351
 Humidity:51%
 Test Distance:2.532m [K=1.0000]
 Remarks:

CU AND LUMINAIRE BUDGETARY ESTIMATE DIAGRAM

Test:U:120.1V I:0.1576A P:17.67W PF:0.9334 Lamp Flux:1370.49x1 lm		
NAME: LED luminaire	TYPE:N/A	WEIGHT:N/A
SPEC.:ASD-MPS-9D18CC-BK 5000K	DIM.: N/A	SERIAL No.:N/A
MFR.: ASD LIGHTING CORP	SUR.:N/A	Shielding Angle:N/A

pcc	80%			70%			50%			30%			10%			0
	50%	30%	10%	50%	30%	10%	50%	30%	10%	50%	30%	10%	50%	30%	10%	0
pw																0
pfc	20%			20%			20%			20%			20%			0
RCR	RCR:Room Cavity Ratio Coefficients of Utilization(CU)															
0.0	1.19	1.19	1.19	1.16	1.16	1.16	1.11	1.11	1.11	1.06	1.06	1.06	1.02	1.02	1.02	.00
1.0	1.04	.00	.96	1.02	.98	.95	.98	.94	.92	.94	.91	.89	.90	.88	.86	.84
2.0	.91	.84	.78	.89	.83	.77	.85	.80	.76	.82	.78	.74	.79	.75	.72	.70
3.0	.80	.72	.65	.78	.71	.65	.75	.69	.63	.72	.67	.62	.70	.65	.61	.59
4.0	.71	.62	.55	.69	.61	.55	.67	.60	.54	.64	.58	.53	.62	.57	.53	.50
5.0	.63	.54	.48	.62	.54	.47	.60	.52	.47	.58	.51	.46	.56	.50	.46	.44
6.0	.57	.48	.41	.56	.47	.41	.54	.47	.41	.52	.46	.41	.51	.45	.40	.38
7.0	.52	.43	.37	.51	.42	.36	.49	.42	.36	.48	.41	.36	.46	.40	.36	.34
8.0	.47	.39	.33	.46	.38	.33	.45	.38	.32	.44	.37	.32	.43	.36	.32	.30
9.0	.43	.35	.29	.43	.35	.29	.41	.34	.29	.40	.34	.29	.39	.33	.29	.27
10.0	.40	.32	.27	.39	.32	.27	.38	.31	.26	.37	.31	.26	.36	.30	.26	.24



C Range: 0 - 360DEG
 C Interval: 22.5DEG
 Test Speed: HIGH
 Temperature:24.6DEG
 Operators:Evan
 Test Date:2023-02-22

γ Range: 0 - 180DEG
 γ Interval: 1.0DEG
 Test System:EVERFINE GO-R5000_V2 SYSTEM V2.0.351
 Humidity:51%
 Test Distance:2.532m [K=1.0000]
 Remarks:

WEC AND CCEC

Test:U:120.1V I:0.1576A P:17.67W PF:0.9334 Lamp Flux:1370.49x1 lm		
NAME: LED luminaire	TYPE:N/A	WEIGHT:N/A
SPEC.:ASD-MPS-9D18CC-BK 5000K	DIM.: N/A	SERIAL No.:N/A
MFR.:ASD LIGHTING CORP	SUR.:N/A	Shielding Angle:N/A

ρcc	80%			70%			50%			30%			10%			0
ρw	50%	30%	10%	50%	30%	10%	50%	30%	10%	50%	30%	10%	50%	30%	10%	0
ρfc	20%			20%			20%			20%			20%			0
RCR	RCR:Room Cavity Ratio						Wall Exitance Coefficients(WEC)									
0.0																
1.0	.304	.173	.055	.297	.169	.054	.284	.163	.052	.271	.157	.050	.260	.151	.049	
2.0	.288	.158	.048	.282	.155	.048	.270	.150	.047	.259	.145	.045	.249	.141	.044	
3.0	.267	.142	.043	.262	.140	.042	.251	.136	.041	.242	.132	.041	.233	.129	.040	
4.0	.247	.128	.038	.242	.127	.037	.233	.124	.037	.224	.121	.036	.217	.118	.036	
5.0	.229	.117	.034	.224	.115	.034	.216	.113	.033	.209	.110	.033	.202	.108	.032	
6.0	.212	.106	.030	.209	.105	.030	.201	.103	.030	.194	.101	.030	.188	.099	.029	
7.0	.198	.098	.028	.194	.097	.028	.188	.095	.027	.182	.093	.027	.176	.091	.027	
8.0	.185	.090	.025	.182	.089	.025	.176	.088	.025	.170	.086	.025	.165	.085	.025	
9.0	.173	.084	.023	.171	.083	.023	.165	.082	.023	.160	.080	.023	.156	.079	.023	
10.0	.163	.078	.022	.161	.078	.022	.156	.076	.021	.151	.075	.021	.147	.074	.021	

ρcc	80%			70%			50%			30%			10%			0
ρw	50%	30%	10%	50%	30%	10%	50%	30%	10%	50%	30%	10%	50%	30%	10%	0
ρfc	20%			20%			20%			20%			20%			0
RCR	RCR:Room Cavity Ratio						Ceiling Cavity Exitance Coefficients(CCEC)									
0.0	.191	.191	.191	.163	.163	.163	.112	.112	.112	.064	.064	.064	.020	.020	.020	
1.0	.181	.157	.136	.155	.135	.117	.106	.093	.081	.061	.054	.047	.019	.017	.015	
2.0	.173	.133	.099	.148	.114	.086	.101	.079	.060	.058	.046	.035	.019	.015	.011	
3.0	.165	.115	.075	.141	.099	.065	.097	.069	.046	.056	.040	.027	.018	.013	.009	
4.0	.157	.102	.059	.135	.088	.052	.093	.061	.036	.054	.036	.022	.017	.012	.007	
5.0	.150	.091	.048	.129	.079	.042	.089	.055	.030	.051	.032	.018	.017	.011	.006	
6.0	.143	.083	.040	.123	.072	.035	.085	.050	.025	.049	.030	.015	.016	.010	.005	
7.0	.136	.076	.034	.117	.066	.030	.081	.046	.021	.047	.027	.013	.015	.009	.004	
8.0	.129	.070	.030	.111	.061	.026	.077	.043	.018	.045	.025	.011	.015	.008	.004	
9.0	.123	.065	.026	.106	.057	.023	.074	.040	.016	.043	.024	.010	.014	.008	.003	
10.0	.118	.061	.023	.101	.053	.020	.070	.037	.014	.041	.022	.009	.013	.007	.003	

C Range: 0 - 360DEG
 C Interval: 22.5DEG
 Test Speed: HIGH
 Temperature:24.6DEG
 Operators:Evan
 Test Date:2023-02-22

γ Range: 0 - 180DEG
 γ Interval: 1.0DEG
 Test System:EVERFINE GO-R5000_V2 SYSTEM V2.0.351
 Humidity:51%
 Test Distance:2.532m [K=1.0000]
 Remarks:

UGR(Unified Glare Rating) Table

Test:U:120.1V I:0.1576A P:17.67W PF:0.9334 Lamp Flux:1370.49x1 lm										
NAME: LED luminaire					TYPE:N/A			WEIGHT:N/A		
SPEC.:ASD-MPS-9D18CC-BK 5000K					DIM.: N/A			SERIAL No.:N/A		
MFR.: ASD LIGHTING CORP					SUR.:N/A			Shielding Angle:N/A		
ceiling/cavity	0.7	0.7	0.5	0.5	0.3	0.7	0.7	0.5	0.5	0.3
walls	0.5	0.3	0.5	0.3	0.3	0.5	0.3	0.5	0.3	0.3
working plane	0.2	0.2	0.2	0.2	0.2	0.2	0.2	0.2	0.2	0.2
Room dimensions	Viewed crosswise					Viewed endwise				
x = 2H y = 2H	17.5	19.0	17.7	19.2	19.4	17.6	19.1	17.9	19.3	19.5
3H	18.9	20.3	19.2	20.5	20.7	19.1	20.5	19.4	20.8	21.0
4H	19.4	20.7	19.7	21.0	21.2	19.7	21.1	20.1	21.3	21.6
6H	19.7	20.9	20.0	21.2	21.5	20.2	21.4	20.5	21.7	22.0
8H	19.8	21.0	20.1	21.3	21.6	20.3	21.5	20.6	21.8	22.1
12H	19.8	21.0	20.1	21.2	21.6	20.4	21.5	20.7	21.8	22.1
4H 2H	18.1	19.4	18.4	19.7	19.9	18.2	19.5	18.5	19.8	20.0
3H	19.7	20.8	20.0	21.1	21.4	19.9	21.1	20.3	21.4	21.7
4H	20.3	21.3	20.7	21.7	22.0	20.6	21.7	21.0	22.0	22.3
6H	20.7	21.7	21.1	22.0	22.4	21.2	22.1	21.6	22.5	22.8
8H	20.8	21.7	21.2	22.1	22.5	21.4	22.2	21.8	22.6	23.0
12H	20.9	21.7	21.3	22.1	22.5	21.5	22.3	21.9	22.7	23.1
8H 4H	20.5	21.4	21.0	21.8	22.2	20.8	21.7	21.3	22.1	22.5
6H	21.1	21.8	21.5	22.2	22.7	21.5	22.3	22.0	22.7	23.1
8H	21.3	21.9	21.7	22.3	22.8	21.8	22.4	22.3	22.9	23.3
12H	21.4	21.9	21.9	22.4	22.9	22.0	22.5	22.5	23.0	23.5
12H 4H	20.5	21.4	21.0	21.7	22.1	20.8	21.6	21.3	22.0	22.4
6H	21.1	21.8	21.6	22.2	22.7	21.6	22.2	22.0	22.6	23.1
8H	21.4	21.9	21.8	22.4	22.8	21.9	22.4	22.3	22.9	23.3
Variations with the observer position at spacings:										
S = 1.0H	+ 0.2 / - 0.2					+ 0.2 / - 0.2				
1.5H	+ 0.2 / - 0.3					+ 0.2 / - 0.3				
2.0H	+ 0.2 / - 0.3					+ 0.2 / - 0.3				

CIE Pub.117 Corrected 1370 lm Total Lamp Luminous Flux.(8log(F/F0) = 1.1)

C Range: 0 - 360DEG
 C Interval: 22.5DEG
 Test Speed: HIGH
 Temperature:24.6DEG
 Operators:Evan
 Test Date:2023-02-22

γ Range: 0 - 180DEG
 γ Interval: 1.0DEG
 Test System:EVERFINE GO-R5000_V2 SYSTEM V2.0.351
 Humidity:51%
 Test Distance:2.532m [K=1.0000]
 Remarks:

UTILIZATION FACTORS TABLE

Test:U:120.1V I:0.1576A P:17.67W PF:0.9334 Lamp Flux:1370.49x1 lm		
NAME: LED luminaire	TYPE:N/A	WEIGHT:N/A
SPEC.:ASD-MPS-9D18CC-BK 5000K	DIM.: N/A	SERIAL No.:N/A
MFR.: ASD LIGHTING CORP	SUR.:N/A	Shielding Angle:N/A

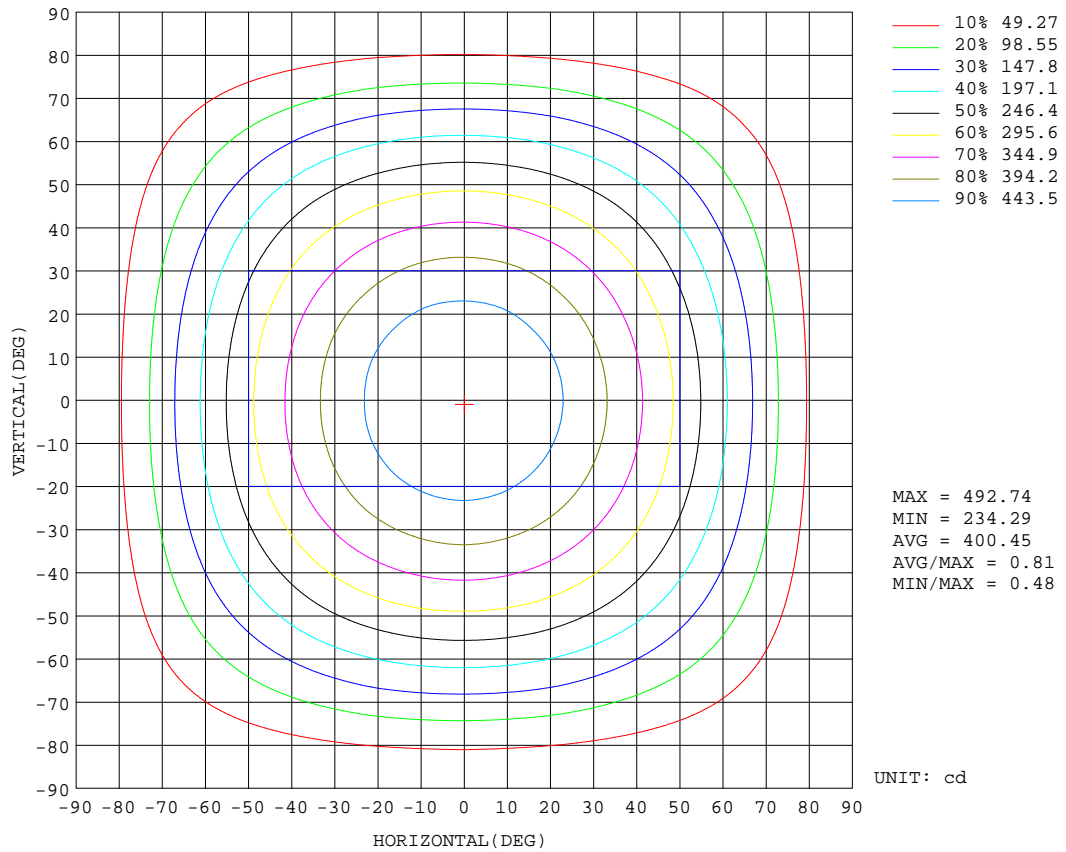
REFLECTANCE										
Ceiling	0.8	0.8	0.8	0.7	0.7	0.7	0.5	0.5	0.5	0
Walls	0.7	0.5	0.3	0.7	0.5	0.3	0.7	0.5	0.3	0
Working plane	0.2	0.2	0.2	0.2	0.2	0.2	0.2	0.2	0.2	0
ROOM INDEX	UTILIZATION FACTORS(PERCENT) $k(RI) \times RCR = 5$									
k = 0.60	58	46	39	57	46	39	56	46	39	33
0.80	68	56	49	67	56	49	65	55	48	42
1.00	76	65	58	75	65	58	73	66	57	50
1.25	83	73	66	82	72	66	79	71	65	58
1.50	88	79	72	87	78	71	84	76	70	63
2.00	95	87	80	93	86	80	90	83	78	70
2.50	99	91	86	97	90	85	93	87	83	74
3.00	102	96	90	100	94	89	96	91	87	79
4.00	106	101	96	104	99	95	100	96	92	83
5.00	109	104	100	106	102	99	102	99	95	86
ROOM INDEX	UF(total)									Direct
According to DIN EN 13032-2 2004			Suspended				SHRNOM = 1.25			

C Range: 0 - 360DEG
 C Interval: 22.5DEG
 Test Speed: HIGH
 Temperature:24.6DEG
 Operators:Evan
 Test Date:2023-02-22

γ Range: 0 - 180DEG
 γ Interval: 1.0DEG
 Test System:EVERFINE GO-R5000_V2 SYSTEM V2.0.351
 Humidity:51%
 Test Distance:2.532m [K=1.0000]
 Remarks:

ISOCANDELA DIAGRAM

Test:U:120.1V I:0.1576A P:17.67W PF:0.9334 Lamp Flux:1370.49x1 lm		
NAME: LED luminaire	TYPE:N/A	WEIGHT:N/A
SPEC.:ASD-MPS-9D18CC-BK 5000K	DIM.: N/A	SERIAL No.:N/A
MFR.: ASD LIGHTING CORP	SUR.:N/A	Shielding Angle:N/A

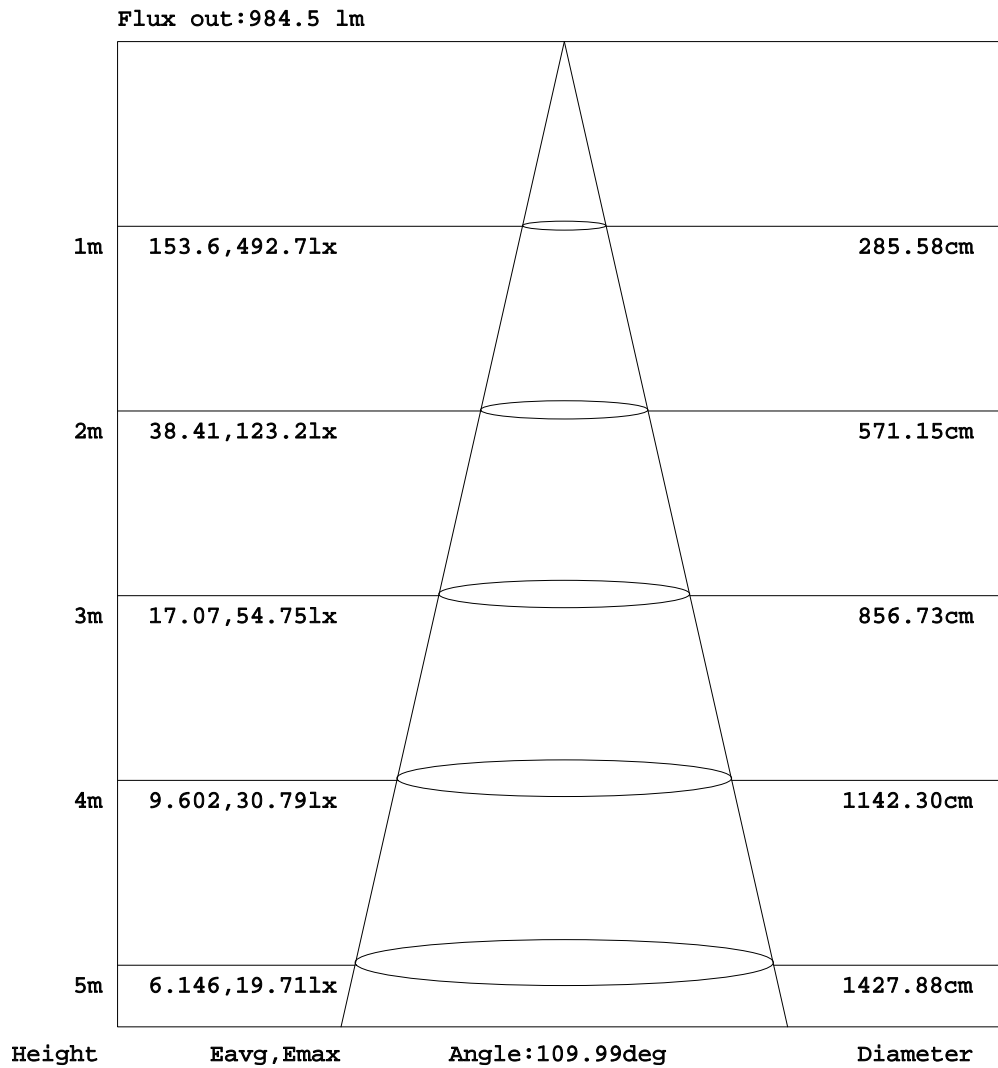


C Range: 0 - 360DEG
 C Interval: 22.5DEG
 Test Speed: HIGH
 Temperature:24.6DEG
 Operators:Evan
 Test Date:2023-02-22

γ Range: 0 - 180DEG
 γ Interval: 1.0DEG
 Test System:EVERFINE GO-R5000_V2 SYSTEM V2.0.351
 Humidity:51%
 Test Distance:2.532m [K=1.0000]
 Remarks:

AAI Figure

Test:U:120.1V I:0.1576A P:17.67W PF:0.9334 Lamp Flux:1370.49x1 lm		
NAME: LED luminaire	TYPE:N/A	WEIGHT:N/A
SPEC.:ASD-MPS-9D18CC-BK 5000K	DIM.: N/A	SERIAL No.:N/A
MFR.:ASD LIGHTING CORP	SUR.:N/A	Shielding Angle:N/A



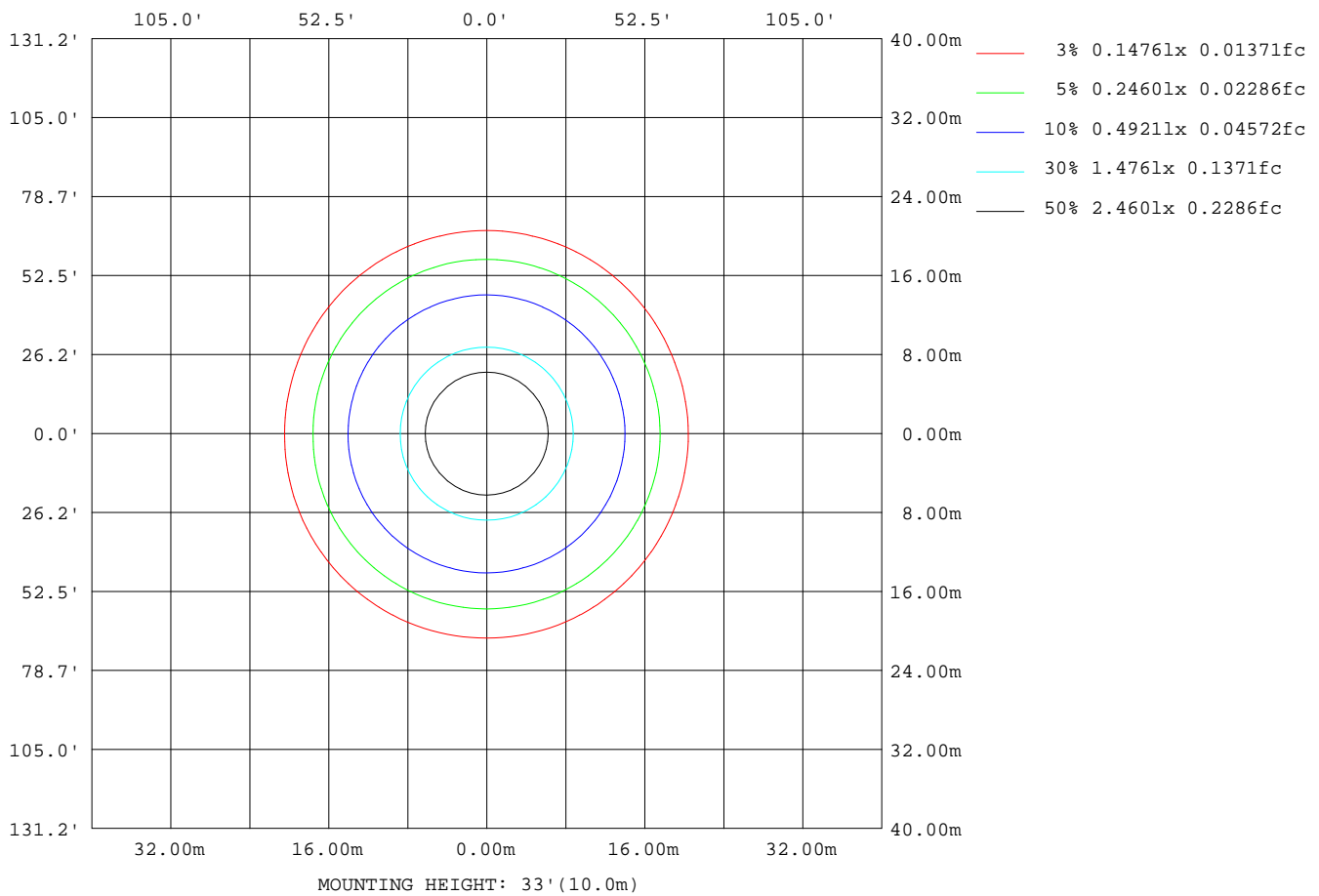
Note:The Curves indicate the illuminated area and the average illumination when the luminaire is at different distance.

C Range: 0 - 360DEG
 C Interval: 22.5DEG
 Test Speed: HIGH
 Temperature:24.6DEG
 Operators:Evan
 Test Date:2023-02-22

γ Range: 0 - 180DEG
 γ Interval: 1.0DEG
 Test System:EVERFINE GO-R5000_V2 SYSTEM V2.0.351
 Humidity:51%
 Test Distance:2.532m [K=1.0000]
 Remarks:

ISOLUX DIAGRAM

Test:U:120.1V I:0.1576A P:17.67W PF:0.9334 Lamp Flux:1370.49x1 lm		
NAME: LED luminaire	TYPE:N/A	WEIGHT:N/A
SPEC.:ASD-MPS-9D18CC-BK 5000K	DIM.: N/A	SERIAL No.:N/A
MFR.: ASD LIGHTING CORP	SUR.:N/A	Shielding Angle:N/A



C Range: 0 - 360DEG
 C Interval: 22.5DEG
 Test Speed: HIGH
 Temperature:24.6DEG
 Operators:Evan
 Test Date:2023-02-22

γ Range: 0 - 180DEG
 γ Interval: 1.0DEG
 Test System:EVERFINE GO-R5000_V2 SYSTEM V2.0.351
 Humidity:51%
 Test Distance:2.532m [K=1.0000]
 Remarks:

LED Avg.L Report

Test:U:120.1V I:0.1576A P:17.67W PF:0.9334 Lamp Flux:1370.49x1 lm		
NAME: LED luminaire	TYPE:N/A	WEIGHT:N/A
SPEC.:ASD-MPS-9D18CC-BK 5000K	DIM.: N/A	SERIAL No.:N/A
MFR.: ASD LIGHTING CORP	SUR.:N/A	Shielding Angle:N/A

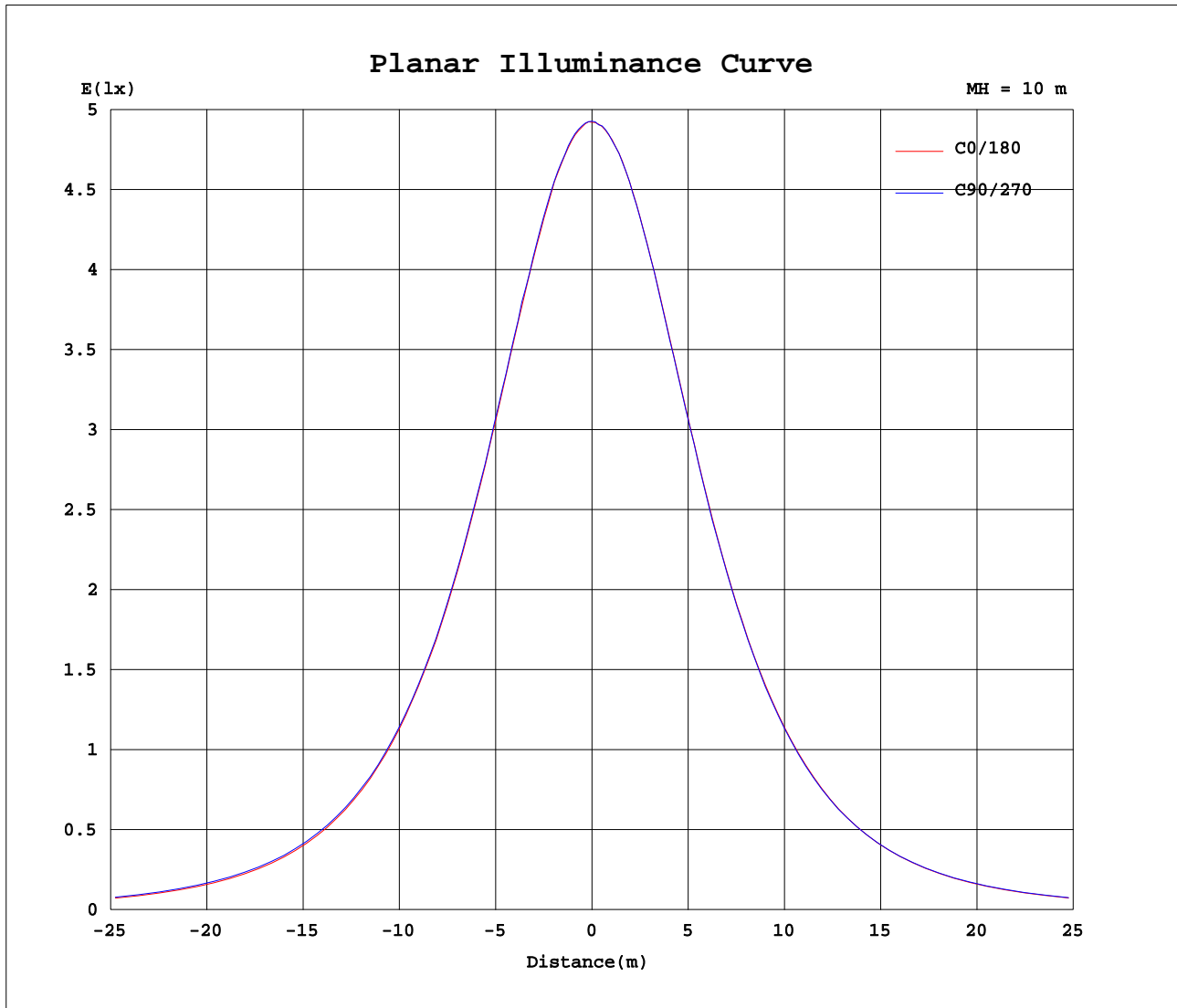
AvgL	cd/m2
L_0~180(65)av	3450
L_0~180(75)av	2807
L_0~180(85)av	1568
L_90~270(65)av	3580
L_90~270(75)av	3086
L_90~270(85)av	2170
L_45(65)av	3523
L_45(75)av	2935
L_45(85)av	1758

Standard: GB/T 29293-2012

C Range: 0 - 360DEG
 C Interval: 22.5DEG
 Test Speed: HIGH
 Temperature:24.6DEG
 Operators:Evan
 Test Date:2023-02-22

γ Range: 0 - 180DEG
 γ Interval: 1.0DEG
 Test System:EVERFINE GO-R5000_V2 SYSTEM V2.0.351
 Humidity:51%
 Test Distance:2.532m [K=1.0000]
 Remarks:

Planar Illuminance Curve



C Range: 0 - 360DEG
 C Interval: 22.5DEG
 Test Speed: HIGH
 Temperature: 24.6DEG
 Operators: Evan
 Test Date: 2023-02-22

γ Range: 0 - 180DEG
 γ Interval: 1.0DEG
 Test System: EVERFINE GO-R5000_V2 SYSTEM V2.0.351
 Humidity: 51%
 Test Distance: 2.532m [K=1.0000]
 Remarks:

LUMINOUS DISTRIBUTION INTENSITY DATA

Test:U:120.1V I:0.1576A P:17.67W PF:0.9334 Lamp Flux:1370.49x1 lm		
NAME: LED luminaire	TYPE:N/A	WEIGHT:N/A
SPEC.:ASD-MPS-9D18CC-BK 5000K	DIM.: N/A	SERIAL No.:N/A
MFR.: ASD LIGHTING CORP	SUR.:N/A	Shielding Angle:N/A

Table--1

UNIT: cd

C(DEG) γ (DEG)	0	22.5	45	67.5	90	112.5	135	157.5	180	202.5	225	247.5	270	292.5	315	337.5			
0	492	492	492	492	492	492	492	492	492	492	492	492	492	492	492	492			
5	490	490	489	490	490	490	490	490	490	490	490	490	490	489	490	489			
10	483	482	483	483	483	483	484	484	483	483	483	483	483	482	482	482			
15	470	471	470	471	472	472	472	472	472	471	471	471	471	470	470	470			
20	454	454	455	455	457	456	456	456	456	456	456	455	454	454	454	454			
25	434	434	434	436	436	436	437	437	436	436	435	435	434	434	433	433			
30	410	411	411	412	412	413	413	414	412	412	412	411	411	410	409	409			
35	383	383	384	385	386	386	387	387	385	385	385	384	383	383	381	382			
40	353	353	354	355	355	356	357	357	355	355	354	354	354	352	352	352			
45	320	321	321	323	323	324	324	324	322	322	321	321	320	319	319	318			
50	284	285	287	288	289	289	290	289	287	287	286	285	285	284	283	282			
55	245	247	249	251	252	252	252	251	248	248	249	248	247	247	246	244			
60	205	206	210	212	213	214	213	211	207	207	210	209	208	208	206	203			
65	164	165	168	173	173	174	172	169	166	166	168	169	168	167	164	162			
70	122	123	127	132	133	134	130	127	123	123	125	128	127	126	122	119			
75	81.6	83.2	86.7	91.6	93.2	93.2	89.5	86.3	82.5	82.6	84.7	87.4	87.1	85.8	82.2	79.6			
80	45.0	46.7	49.8	53.9	56.3	55.1	52.1	49.3	45.7	45.8	47.2	49.7	50.5	48.6	45.4	43.6			
85	15.0	15.9	17.9	21.2	23.7	22.1	19.5	17.6	15.9	15.7	16.4	18.1	19.0	17.5	15.3	14.7			
90	0.10	0.10	0.16	0.16	2.48	0.17	0.19	0.23	0.03	0.02	0.03	0.03	0.03	0.03	0.03	0.03			
95	0.10	0.10	0.11	0.11	0.10	0.10	0.10	0.10	0.03	0.03	0.04	0.04	0.04	0.04	0.04	0.04			
100	0.12	0.12	0.14	0.13	0.12	0.14	0.14	0.13	0.05	0.05	0.07	0.06	0.05	0.06	0.07	0.06			
105	0.13	0.13	0.15	0.14	0.14	0.14	0.15	0.13	0.06	0.06	0.07	0.07	0.07	0.07	0.08	0.07			
110	0.14	0.14	0.16	0.15	0.15	0.15	0.15	0.14	0.08	0.08	0.09	0.09	0.09	0.09	0.09	0.09			
115	0.16	0.16	0.17	0.17	0.16	0.17	0.17	0.16	0.10	0.10	0.10	0.11	0.10	0.10	0.11	0.10			
120	0.18	0.19	0.20	0.20	0.19	0.20	0.19	0.19	0.12	0.12	0.12	0.13	0.12	0.12	0.13	0.12			
125	0.22	0.22	0.23	0.23	0.23	0.23	0.23	0.22	0.15	0.15	0.15	0.15	0.15	0.15	0.15	0.15			
130	0.27	0.27	0.28	0.28	0.28	0.29	0.28	0.27	0.18	0.18	0.18	0.18	0.17	0.18	0.18	0.18			
135	0.32	0.32	0.34	0.34	0.35	0.35	0.34	0.32	0.20	0.21	0.21	0.21	0.21	0.20	0.20	0.22			
140	0.41	0.42	0.44	0.44	0.45	0.44	0.43	0.40	0.24	0.23	0.24	0.24	0.23	0.23	0.23	0.24			
145	0.50	0.53	0.55	0.57	0.57	0.56	0.54	0.51	0.25	0.25	0.26	0.28	0.27	0.27	0.26	0.27			
150	0.59	0.62	0.64	0.65	0.65	0.65	0.62	0.60	0.28	0.27	0.28	0.29	0.29	0.29	0.28	0.29			
155	0.67	0.70	0.71	0.73	0.74	0.73	0.70	0.69	0.32	0.30	0.33	0.32	0.32	0.33	0.32	0.35			
160	0.75	0.76	0.77	0.77	0.76	0.77	0.76	0.75	0.37	0.35	0.37	0.35	0.36	0.36	0.35	0.39			
165	0.75	0.75	0.76	0.76	0.78	0.78	0.76	0.73	0.40	0.39	0.38	0.40	0.39	0.39	0.39	0.43			
170	0.71	0.71	0.71	0.71	0.72	0.72	0.71	0.72	0.46	0.45	0.42	0.43	0.41	0.42	0.43	0.45			
175	0.68	0.67	0.67	0.65	0.64	0.65	0.67	0.68	0.51	0.51	0.50	0.48	0.47	0.46	0.49	0.51			
180	0.59	0.57	0.55	0.53	0.54	0.56	0.59	0.60	0.59	0.59	0.58	0.56	0.54	0.55	0.56	0.60			

C Range: 0 - 360DEG
 C Interval: 22.5DEG
 Test Speed: HIGH
 Temperature:24.6DEG
 Operators:Evan
 Test Date:2023-02-22

γ Range: 0 - 180DEG
 γ Interval: 1.0DEG
 Test System:EVERFINE GO-R5000_V2 SYSTEM V2.0.351
 Humidity:51%
 Test Distance:2.532m [K=1.0000]
 Remarks: