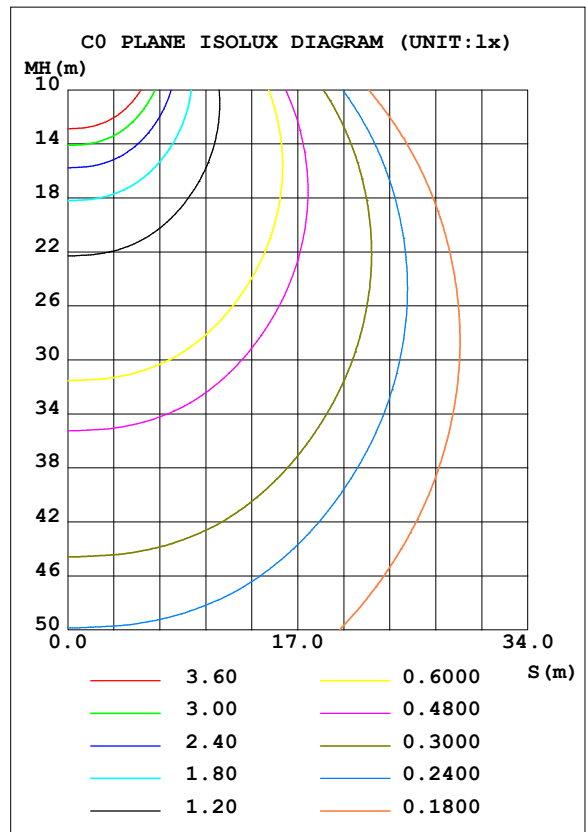
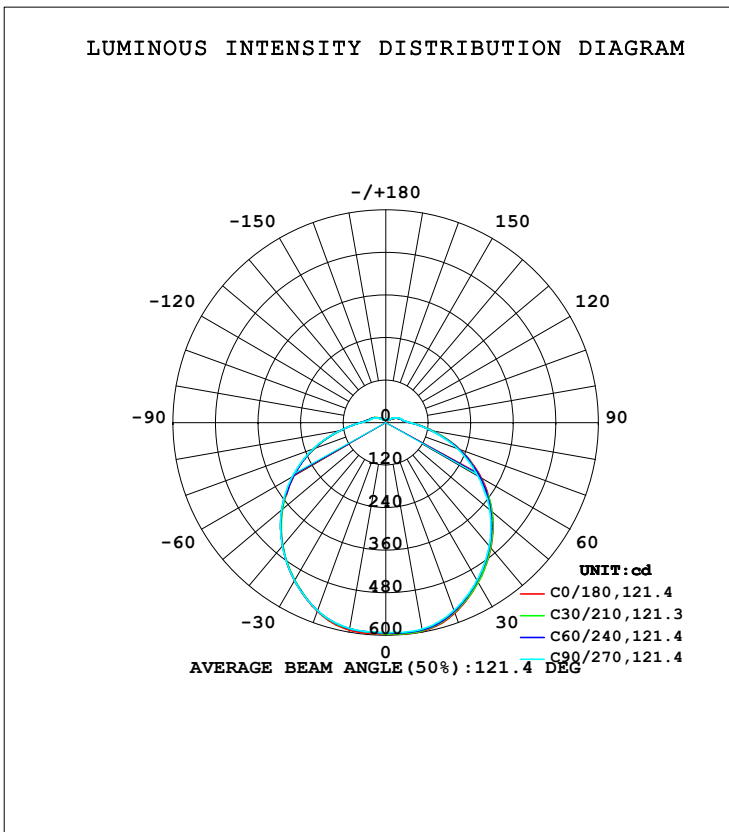


LUMINAIRE PHOTOMETRIC TEST REPORT

Test:U:119.94V I:0.3762A P:40.595W PF:0.8990 Freq:60.00Hz Lamp Flux:2138.29x1 lm		
NAME: ASD lighting Corp	TYPE:	WEIGHT:
SPEC.:ASD-LFC-HN-20D42-AC-2700K	DIM.:	SERIAL No.:
MFR.: ASD lighting Corp	SUR.:0.43*0.39	Shielding Angle:

DATA OF LAMP		PHOTOMETRIC DATA			
MODEL	ASD-LFC-HN-20D42-AC	Imax (cd)	598.2	S/MH (C0/180)	1.28
NOMINAL POWER (W)	--	LOR (%)	100.0	S/MH (C90/270)	1.29
RATED VOLTAGE (V)	--	TOTAL FLUX (lm)	2138.3	<input type="checkbox"/> UP, DN (C0-180)	4.3,45.7
NOMINAL FLUX (lm)	2138.29	CIE CLASS	DIRECT	<input type="checkbox"/> UP, DN (C180-360)	4.3,45.7
LAMPS INSIDE	1	<input type="checkbox"/> up (%)	8.6	CIBSE SHR NOM	1.50
TEST VOLTAGE (V)	--	<input type="checkbox"/> down (%)	91.4	CIBSE SHR MAX	1.50



C Range: 0 - 360DEG
 C Interval: 30.0DEG
 Test Speed: HIGH
 Temperature:25.3DEG
 Operators:admin
 Test Date:2022-03-16

Range: 0 - 180DEG
 Interval: 1.0DEG
 Test System:EVERFINE GO-2000B_V1 SYSTEM V2.00.411
 Humidity:65.0%
 Test Distance:8.780m [K=1.0000]
 Remarks:

ZONAL FLUX DIAGRAM

ZONAL FLUX DIAGRAM:

mm	C0	C45	C90	C135	C180	C225	C270	C315	mm	□ zone	□ total	%lum, lamp
10	597.2	594.7	591.0	588.7	593.8	590.1	589.2	589.5	0- 10	56.59	56.59	2.65,2.65
20	571.4	567.5	563.3	561.0	565.9	564.1	564.1	564.7	10- 20	164.2	220.8	10.3,10.3
30	520.7	518.1	514.2	510.6	514.8	513.6	514.7	515.5	20- 30	249.7	470.5	22,22
40	461.1	457.9	454.0	448.7	452.9	452.8	453.8	456.3	30- 40	304.2	774.8	36.2,36.2
50	391.0	388.6	382.7	378.0	381.3	381.6	383.9	386.2	40- 50	324.5	1099	51.4,51.4
60	311.1	306.7	300.0	298.0	299.0	301.6	304.7	305.4	50- 60	307.7	1407	65.8,65.8
70	223.3	219.9	215.1	213.0	214.0	215.7	218.4	219.9	60- 70	258.2	1665	77.9,77.9
80	134.1	132.0	129.6	128.0	130.1	130.2	130.8	132.2	70- 80	182.9	1848	86.4,86.4
90	69.59	69.04	69.70	71.12	73.13	71.89	70.00	68.76	80- 90	106.4	1954	91.4,91.4
100	47.18	47.68	47.98	49.23	50.10	48.94	46.57	45.35	90-100	61.94	2016	94.3,94.3
110	36.27	36.87	38.40	39.84	40.50	39.54	37.37	35.27	100-110	45.60	2062	96.4,96.4
120	22.28	25.56	26.73	28.81	25.96	28.76	26.59	24.26	110-120	32.00	2094	97.9,97.9
130	13.98	16.15	17.37	19.01	17.38	18.89	17.11	15.26	120-130	19.33	2113	98.8,98.8
140	9.216	9.883	10.70	11.91	11.44	12.00	10.54	9.160	130-140	10.58	2124	99.3,99.3
150	9.405	9.283	9.466	9.509	8.915	8.733	8.784	8.644	140-150	5.909	2130	99.6,99.6
160	10.54	10.31	10.52	10.51	10.31	9.858	10.20	9.908	150-160	4.462	2134	99.8,99.8
170	10.72	10.58	10.97	10.73	10.80	10.77	10.92	10.59	160-170	3.001	2137	100,100
180	10.03	9.884	9.940	9.761	10.09	9.899	9.946	9.767	170-180	0.9851	2138	100,100
DEG	LUMINOUS INTENSITY:cd									UNIT:lm		

Conical surface Flux(90deg): 936.76 lm

%lum = 43.8%

%lamp = 43.8%

Conical surface Flux(120deg): 1407 lm

%lum = 65.8%

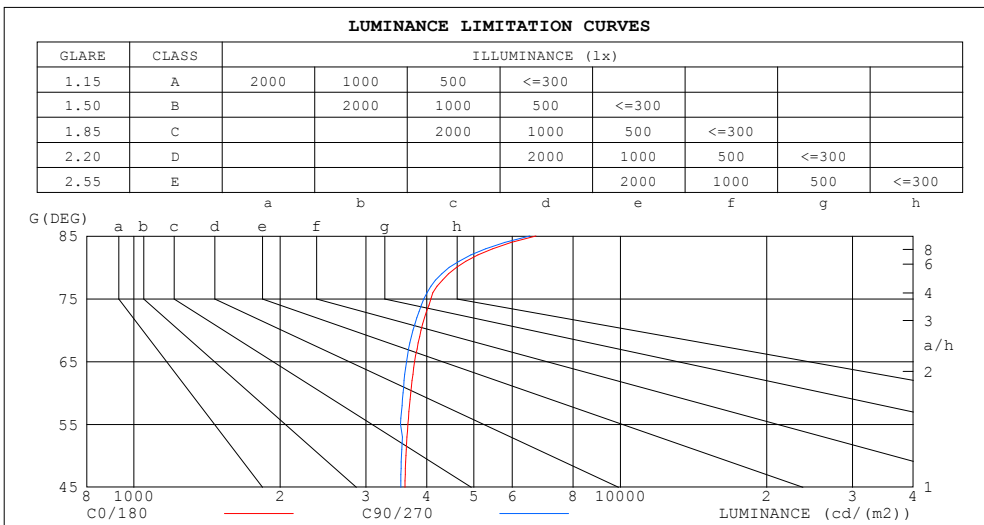
%lamp = 65.8%

C Range: 0 - 360DEG
 C Interval: 30.0DEG
 Test Speed: HIGH
 Temperature:25.3DEG
 Operators:admin
 Test Date:2022-03-16

□ Range: 0 - 180DEG
 □ Interval: 1.0DEG
 Test System:EVERFINE GO-2000B_V1 SYSTEM V2.00.411
 Humidity:65.0%
 Test Distance:8.780m [K=1.0000]
 Remarks:

LUMINANCE LIMITATION CURVES

Test:U:119.94V I:0.3762A P:40.595W PF:0.8990 Freq:60.00Hz Lamp Flux:2138.29x1 lm		
NAME: ASD lighting Corp	TYPE:	WEIGHT:
SPEC.:ASD-LFC-HN-20D42-AC-2700K	DIM.:	SERIAL No.:
MFR.: ASD lighting Corp	SUR.:0.43*0.39	Shielding Angle:



LUMINANCE cd/(m2)		
G (DEG)	C0/180	C90/270
85	6706	6517
80	4604	4451
75	4080	3950
70	3892	3751
65	3778	3635
60	3710	3578
55	3661	3535
50	3627	3550
45	3607	3540

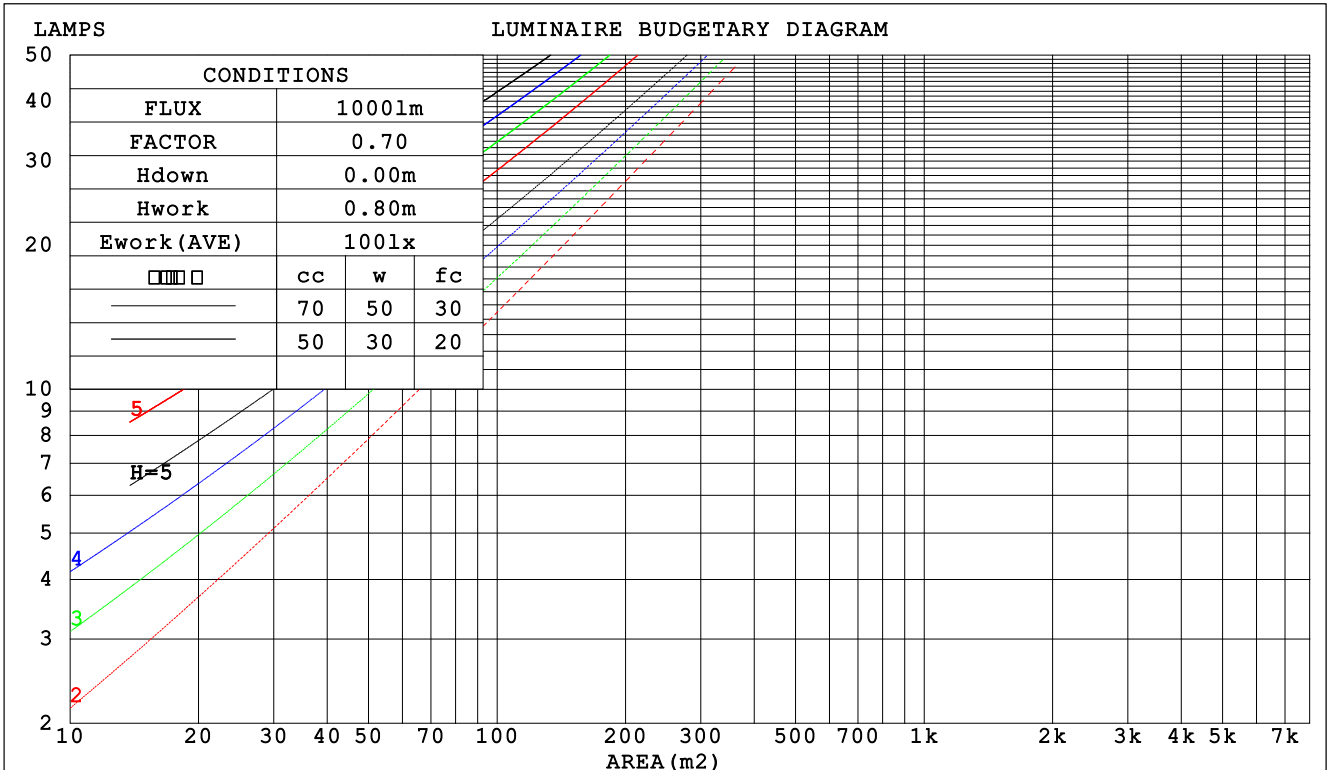
C Range: 0 - 360DEG
 C Interval: 30.0DEG
 Test Speed: HIGH
 Temperature:25.3DEG
 Operators:admin
 Test Date:2022-03-16

Range: 0 - 180DEG
 Interval: 1.0DEG
 Test System:EVERFINE GO-2000B_V1 SYSTEM V2.00.411
 Humidity:65.0%
 Test Distance:8.780m [K=1.0000]
 Remarks:

CU AND LUMINAIRE BUDGETARY ESTIMATE DIAGRAM

Test:U:119.94V I:0.3762A P:40.595W PF:0.8990 Freq:60.00Hz Lamp Flux:2138.29x1 lm		
NAME: ASD lighting Corp	TYPE:	WEIGHT:
SPEC.:ASD-LFC-HN-20D42-AC-2700K	DIM.:	SERIAL No.:
MFR.: ASD lighting Corp	SUR.:0.43*0.39	Shielding Angle:

□cc	80%			70%			50%			30%			10%			0
□w	50%	30%	10%	50%	30%	10%	50%	30%	10%	50%	30%	10%	50%	30%	10%	0
□fc	20%			20%			20%			20%			20%			0
RCR	RCR:Room Cavity Ratio						Coefficients of Utilization(CU)									
0.0	1.17	1.17	1.17	1.13	1.13	1.13	1.06	1.06	1.06	.00	.00	.00	.94	.94	.94	.91
1.0	.00	.95	.90	.96	.92	.88	.91	.87	.84	.85	.82	.79	.80	.78	.76	.73
2.0	.86	.78	.72	.83	.76	.71	.78	.73	.68	.74	.69	.65	.69	.65	.62	.59
3.0	.75	.66	.59	.73	.65	.58	.68	.62	.56	.64	.59	.54	.61	.56	.52	.49
4.0	.66	.57	.50	.64	.55	.49	.60	.53	.47	.57	.51	.46	.54	.49	.44	.42
5.0	.59	.49	.42	.57	.48	.42	.54	.46	.41	.51	.44	.39	.48	.43	.38	.36
6.0	.53	.43	.37	.51	.43	.36	.49	.41	.35	.46	.39	.34	.44	.38	.33	.31
7.0	.48	.39	.32	.46	.38	.32	.44	.37	.31	.42	.35	.30	.40	.34	.29	.27
8.0	.43	.35	.29	.42	.34	.28	.40	.33	.28	.38	.32	.27	.36	.31	.26	.24
9.0	.40	.31	.26	.39	.31	.25	.37	.30	.25	.35	.29	.24	.34	.28	.24	.22
10.0	.37	.29	.23	.36	.28	.23	.34	.27	.22	.33	.26	.22	.31	.26	.21	.20



C Range: 0 - 360DEG
 C Interval: 30.0DEG
 Test Speed: HIGH
 Temperature:25.3DEG
 Operators:admin
 Test Date:2022-03-16

□ Range: 0 - 180DEG
 □ Interval: 1.0DEG
 Test System:EVERFINE GO-2000B_V1 SYSTEM V2.00.411
 Humidity:65.0%
 Test Distance:8.780m [K=1.0000]
 Remarks:

WEC AND CCEC

Test:U:119.94V I:0.3762A P:40.595W PF:0.8990 Freq:60.00Hz Lamp Flux:2138.29x1 lm		
NAME: ASD lighting Corp	TYPE:	WEIGHT:
SPEC.:ASD-LFC-HN-20D42-AC-2700K	DIM.:	SERIAL No.:
MFR.: ASD lighting Corp	SUR.:0.43*0.39	Shielding Angle:

<input type="checkbox"/> cc	80%	70%	50%	30%	10%	0
<input type="checkbox"/> w	50% 30% 10%	50% 30% 10%	50% 30% 10%	50% 30% 10%	50% 30% 10%	0
<input type="checkbox"/> fc	20%	20%	20%	20%	20%	0
RCR	RCR:Room Cavity Ratio		Wall Exitance Coefficients (WEC)			
0.0						
1.0	.353 .201 .064	.343 .196 .062	.325 .186 .059	.308 .177 .057	.292 .169 .055	
2.0	.316 .173 .053	.307 .169 .052	.291 .162 .050	.276 .155 .048	.262 .148 .047	
3.0	.286 .152 .046	.278 .149 .045	.263 .143 .043	.249 .137 .042	.237 .131 .041	
4.0	.260 .135 .040	.253 .132 .039	.240 .127 .038	.227 .122 .037	.216 .117 .036	
5.0	.238 .121 .035	.232 .119 .035	.220 .114 .034	.208 .110 .033	.198 .106 .032	
6.0	.219 .110 .031	.213 .108 .031	.203 .104 .030	.192 .100 .029	.183 .096 .029	
7.0	.203 .100 .028	.198 .098 .028	.188 .095 .027	.179 .092 .027	.170 .088 .026	
8.0	.189 .092 .026	.184 .091 .026	.175 .087 .025	.167 .084 .024	.159 .082 .024	
9.0	.176 .085 .024	.172 .084 .024	.164 .081 .023	.156 .078 .022	.149 .076 .022	
10.0	.165 .079 .022	.161 .078 .022	.154 .075 .021	.147 .073 .021	.140 .071 .020	

<input type="checkbox"/> cc	80%	70%	50%	30%	10%	0
<input type="checkbox"/> w	50% 30% 10%	50% 30% 10%	50% 30% 10%	50% 30% 10%	50% 30% 10%	0
<input type="checkbox"/> fc	20%	20%	20%	20%	20%	0
RCR	RCR:Room Cavity Ratio		Ceiling Cavity Exitance Coefficients (CCEC)			
0.0	.256 .256 .256	.219 .219 .219	.149 .149 .149	.086 .086 .086	.027 .027 .027	
1.0	.249 .222 .197	.213 .190 .170	.146 .131 .117	.084 .076 .068	.027 .024 .022	
2.0	.242 .198 .162	.207 .171 .140	.142 .118 .097	.082 .069 .057	.026 .022 .019	
3.0	.234 .181 .139	.201 .156 .120	.138 .109 .084	.080 .063 .050	.026 .021 .016	
4.0	.227 .168 .124	.194 .145 .108	.134 .101 .076	.077 .059 .045	.025 .019 .015	
5.0	.219 .158 .113	.188 .137 .099	.130 .096 .070	.075 .056 .041	.024 .018 .014	
6.0	.212 .150 .106	.182 .130 .092	.126 .091 .065	.073 .054 .039	.023 .017 .013	
7.0	.205 .143 .100	.176 .124 .087	.122 .087 .062	.071 .051 .037	.023 .017 .012	
8.0	.198 .138 .096	.170 .119 .084	.118 .084 .059	.069 .049 .035	.022 .016 .012	
9.0	.192 .133 .093	.165 .115 .081	.114 .081 .058	.067 .048 .034	.022 .016 .011	
10.0	.186 .129 .090	.160 .112 .079	.111 .079 .056	.065 .046 .033	.021 .015 .011	

C Range: 0 - 360DEG
 C Interval: 30.0DEG
 Test Speed: HIGH
 Temperature:25.3DEG
 Operators:admin
 Test Date:2022-03-16

Range: 0 - 180DEG
 Interval: 1.0DEG
 Test System:EVERFINE GO-2000B_V1 SYSTEM V2.00.411
 Humidity:65.0%
 Test Distance:8.780m [K=1.0000]
 Remarks:

UGR(Unified Glare Rating) Table

Test:U:119.94V I:0.3762A P:40.595W PF:0.8990 Freq:60.00Hz Lamp Flux:2138.29x1 lm										
NAME: ASD lighting Corp					TYPE:			WEIGHT:		
SPEC.:ASD-LFC-HN-20D42-AC-2700K					DIM.:			SERIAL No.:		
MFR.: ASD lighting Corp					SUR.:0.43*0.39			Shielding Angle:		
ceiling/cavity	0.7	0.7	0.5	0.5	0.3	0.7	0.7	0.5	0.5	0.3
walls	0.5	0.3	0.5	0.3	0.3	0.5	0.3	0.5	0.3	0.3
working plane	0.2	0.2	0.2	0.2	0.2	0.2	0.2	0.2	0.2	0.2
Room dimensions	Viewed crosswise					Viewed endwise				
x = 2H y = 2H	16.9	18.4	17.3	18.7	19.1	16.8	18.3	17.2	18.6	19.0
3H	18.8	20.2	19.3	20.6	21.0	18.7	20.0	19.1	20.4	20.8
4H	19.7	21.0	20.2	21.4	21.9	19.6	20.9	20.0	21.3	21.7
6H	20.6	21.8	21.1	22.2	22.7	20.4	21.6	20.9	22.1	22.5
8H	21.0	22.2	21.5	22.6	23.1	20.8	22.0	21.3	22.4	22.9
12H	21.5	22.6	22.0	23.0	23.5	21.3	22.4	21.8	22.9	23.4
4H 2H	17.6	18.9	18.0	19.3	19.7	17.5	18.8	18.0	19.2	19.6
3H	19.7	20.8	20.2	21.3	21.8	19.6	20.7	20.1	21.2	21.7
4H	20.8	21.8	21.3	22.3	22.8	20.6	21.7	21.1	22.1	22.7
6H	21.8	22.7	22.3	23.2	23.8	21.6	22.6	22.2	23.1	23.6
8H	22.3	23.2	22.8	23.7	24.3	22.1	23.0	22.7	23.5	24.1
12H	22.9	23.7	23.4	24.2	24.8	22.7	23.5	23.3	24.0	24.6
8H 4H	21.2	22.0	21.7	22.5	23.1	21.0	21.9	21.6	22.4	23.0
6H	22.4	23.1	23.0	23.7	24.3	22.3	23.0	22.8	23.6	24.2
8H	23.1	23.7	23.7	24.3	24.9	22.9	23.6	23.5	24.2	24.8
12H	23.8	24.4	24.4	25.0	25.7	23.7	24.2	24.3	24.8	25.5
12H 4H	21.2	22.0	21.8	22.5	23.1	21.1	21.9	21.7	22.4	23.0
6H	22.6	23.2	23.1	23.8	24.4	22.4	23.1	23.0	23.6	24.3
8H	23.3	23.9	23.9	24.5	25.1	23.2	23.7	23.8	24.3	25.0
Variations with the observer position at spacings:										
S = 1.0H	+ 0.1 / - 0.1					+ 0.1 / - 0.1				
1.5H	+ 0.2 / - 0.3					+ 0.2 / - 0.3				
2.0H	+ 0.1 / - 0.3					+ 0.2 / - 0.4				

CIE Pub.117, 2138 lm Total Lamp Luminous Flux Corrected (8log(F/F0) = 2.6)
 Area: 0.1677 m2

C Range: 0 - 360DEG
 C Interval: 30.0DEG
 Test Speed: HIGH
 Temperature:25.3DEG
 Operators:admin
 Test Date:2022-03-16

Range: 0 - 180DEG
 Interval: 1.0DEG
 Test System:EVERFINE GO-2000B_V1 SYSTEM V2.00.411
 Humidity:65.0%
 Test Distance:8.780m [K=1.0000]
 Remarks:

UTILIZATION FACTORS TABLE

Test:U:119.94V I:0.3762A P:40.595W PF:0.8990 Freq:60.00Hz Lamp Flux:2138.29x1 lm		
NAME: ASD lighting Corp	TYPE:	WEIGHT:
SPEC.:ASD-LFC-HN-20D42-AC-2700K	DIM.:	SERIAL No.:
MFR.: ASD lighting Corp	SUR.:0.43*0.39	Shielding Angle:

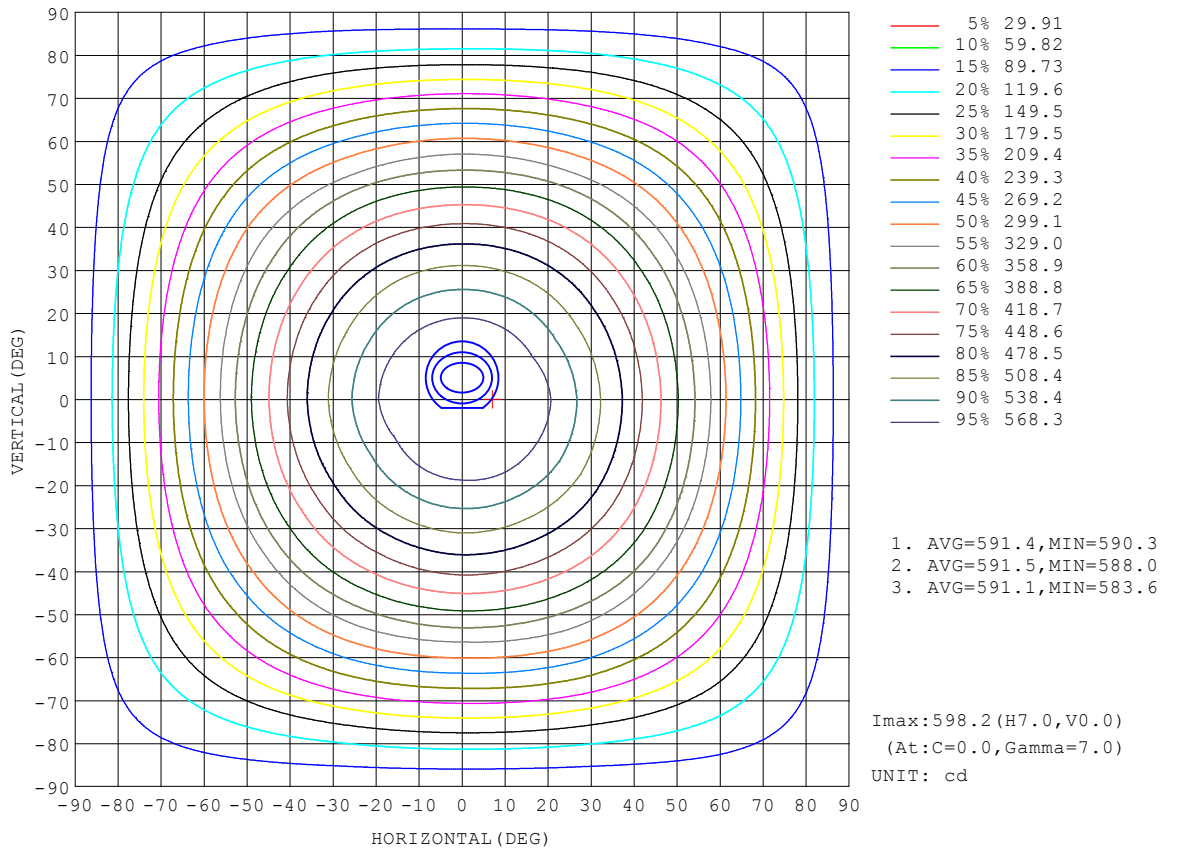
REFLECTANCE										
Ceiling	0.8	0.8	0.8	0.7	0.7	0.7	0.5	0.5	0.5	0
Walls	0.7	0.5	0.3	0.7	0.5	0.3	0.7	0.5	0.3	0
Working plane	0.2	0.2	0.2	0.2	0.2	0.2	0.2	0.2	0.2	0
ROOM INDEX	UTILIZATION FACTORS (PERCENT) $k(RI) \times RCR = 5$									
k = 0.60	52	40	33	52	40	33	50	39	33	26
0.80	62	50	42	61	49	42	58	48	41	34
1.00	70	58	50	69	57	50	66	58	49	41
1.25	77	65	57	75	64	57	72	62	56	47
1.50	82	71	63	80	70	62	76	67	61	52
2.00	89	79	72	87	78	71	82	75	69	59
2.50	93	84	77	91	82	76	86	79	73	63
3.00	97	89	82	94	87	81	89	83	78	67
4.00	101	95	89	98	92	87	93	88	83	72
5.00	104	98	93	101	96	91	95	91	87	75
ROOM INDEX	UF(total)									Direct
According to DIN EN 13032-2 2004			Suspended				SHRNOM = 1.25			

C Range: 0 - 360DEG
 C Interval: 30.0DEG
 Test Speed: HIGH
 Temperature:25.3DEG
 Operators:admin
 Test Date:2022-03-16

Range: 0 - 180DEG
 Interval: 1.0DEG
 Test System:EVERFINE GO-2000B_V1 SYSTEM V2.00.411
 Humidity:65.0%
 Test Distance:8.780m [K=1.0000]
 Remarks:

ISOCANDELA DIAGRAM

Test:U:119.94V I:0.3762A P:40.595W PF:0.8990 Freq:60.00Hz Lamp Flux:2138.29x1 lm		
NAME: ASD lighting Corp	TYPE:	WEIGHT:
SPEC.:ASD-LFC-HN-20D42-AC-2700K	DIM.:	SERIAL No.:
MFR.: ASD lighting Corp	SUR.:0.43*0.39	Shielding Angle:

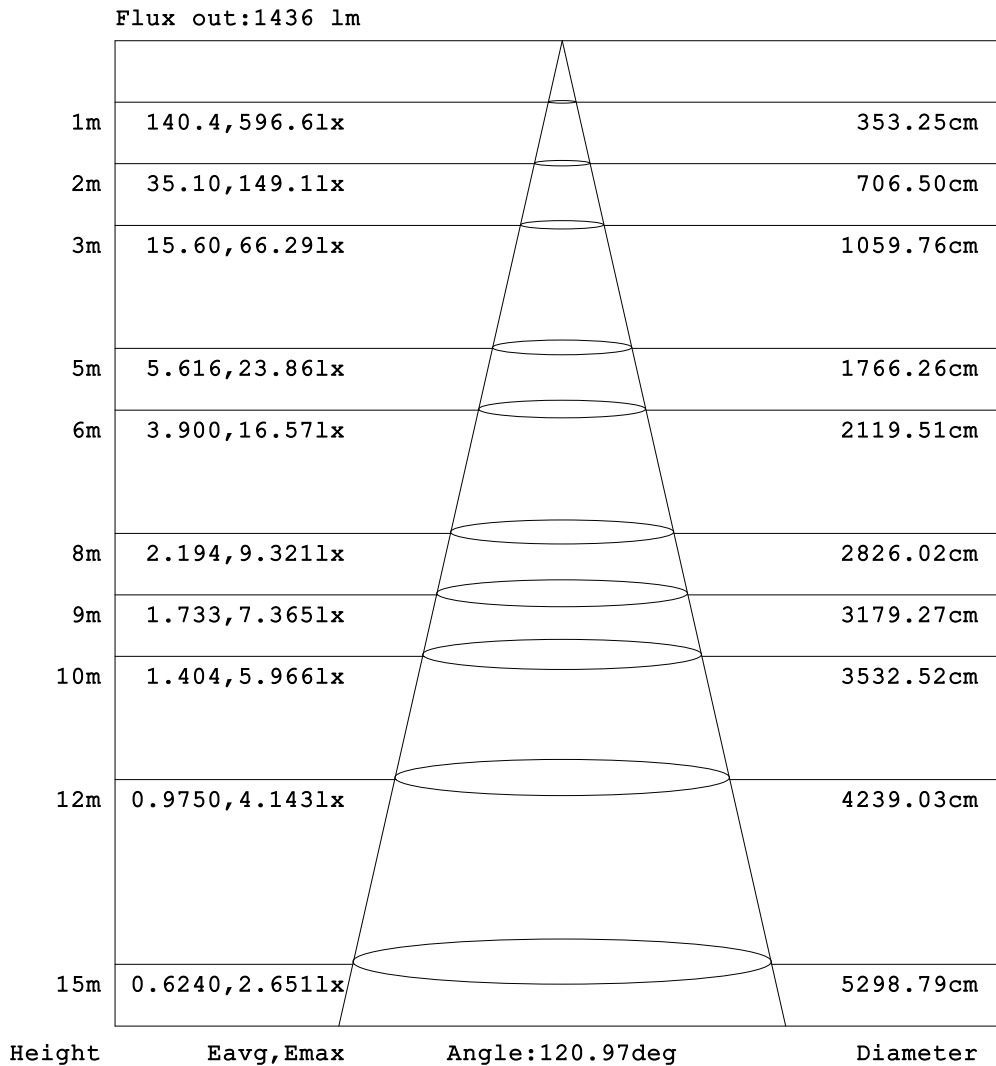


C Range: 0 - 360DEG
 C Interval: 30.0DEG
 Test Speed: HIGH
 Temperature:25.3DEG
 Operators:admin
 Test Date:2022-03-16

Range: 0 - 180DEG
 Interval: 1.0DEG
 Test System:EVERFINE GO-2000B_V1 SYSTEM V2.00.411
 Humidity:65.0%
 Test Distance:8.780m [K=1.0000]
 Remarks:

AAI Figure

Test:U:119.94V I:0.3762A P:40.595W PF:0.8990 Freq:60.00Hz Lamp Flux:2138.29x1 lm		
NAME: ASD lighting Corp	TYPE:	WEIGHT:
SPEC.:ASD-LFC-HN-20D42-AC-2700K	DIM.:	SERIAL No.:
MFR.: ASD lighting Corp	SUR.:0.43*0.39	Shielding Angle:



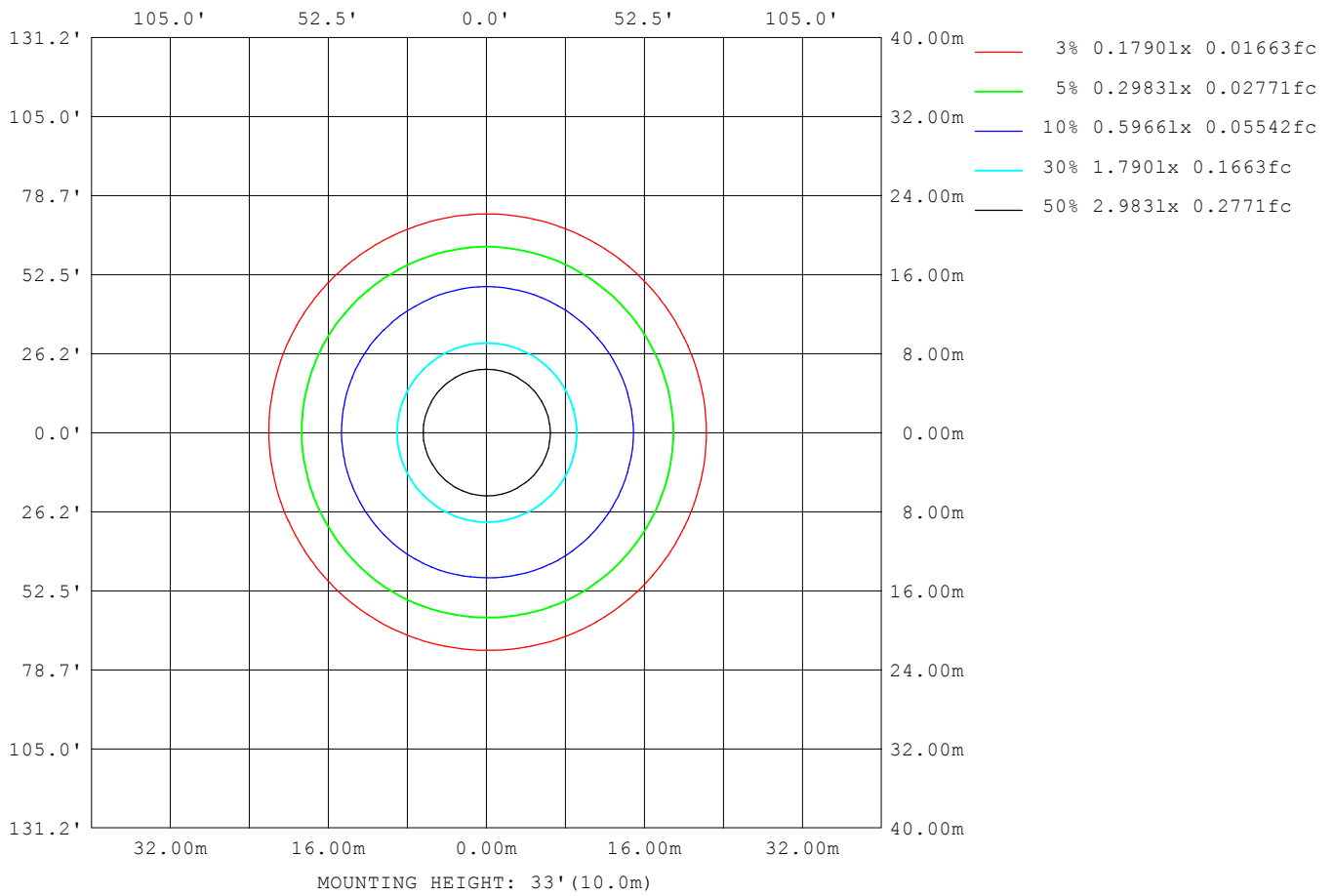
Note:The Curves indicate the illuminated area and the average illumination when the luminaire is at different distance.

C Range: 0 - 360DEG
 C Interval: 30.0DEG
 Test Speed: HIGH
 Temperature:25.3DEG
 Operators:admin
 Test Date:2022-03-16

Range: 0 - 180DEG
 Interval: 1.0DEG
 Test System:EVERFINE GO-2000B_V1 SYSTEM V2.00.411
 Humidity:65.0%
 Test Distance:8.780m [K=1.0000]
 Remarks:

ISOLUX DIAGRAM

Test:U:119.94V I:0.3762A P:40.595W PF:0.8990 Freq:60.00Hz Lamp Flux:2138.29x1 lm		
NAME: ASD lighting Corp	TYPE:	WEIGHT:
SPEC.:ASD-LFC-HN-20D42-AC-2700K	DIM.:	SERIAL No.:
MFR.: ASD lighting Corp	SUR.:0.43*0.39	Shielding Angle:



C Range: 0 - 360DEG
 C Interval: 30.0DEG
 Test Speed: HIGH
 Temperature:25.3DEG
 Operators:admin
 Test Date:2022-03-16

Range: 0 - 180DEG
 Interval: 1.0DEG
 Test System:EVERFINE GO-2000B_V1 SYSTEM V2.00.411
 Humidity:65.0%
 Test Distance:8.780m [K=1.0000]
 Remarks:

LED Avg.L Report

Test:U:119.94V I:0.3762A P:40.595W PF:0.8990 Freq:60.00Hz Lamp Flux:2138.29x1 lm		
NAME: ASD lighting Corp	TYPE:	WEIGHT:
SPEC.:ASD-LFC-HN-20D42-AC-2700K	DIM.:	SERIAL No.:
MFR.: ASD lighting Corp	SUR.:0.43*0.39	Shielding Angle:

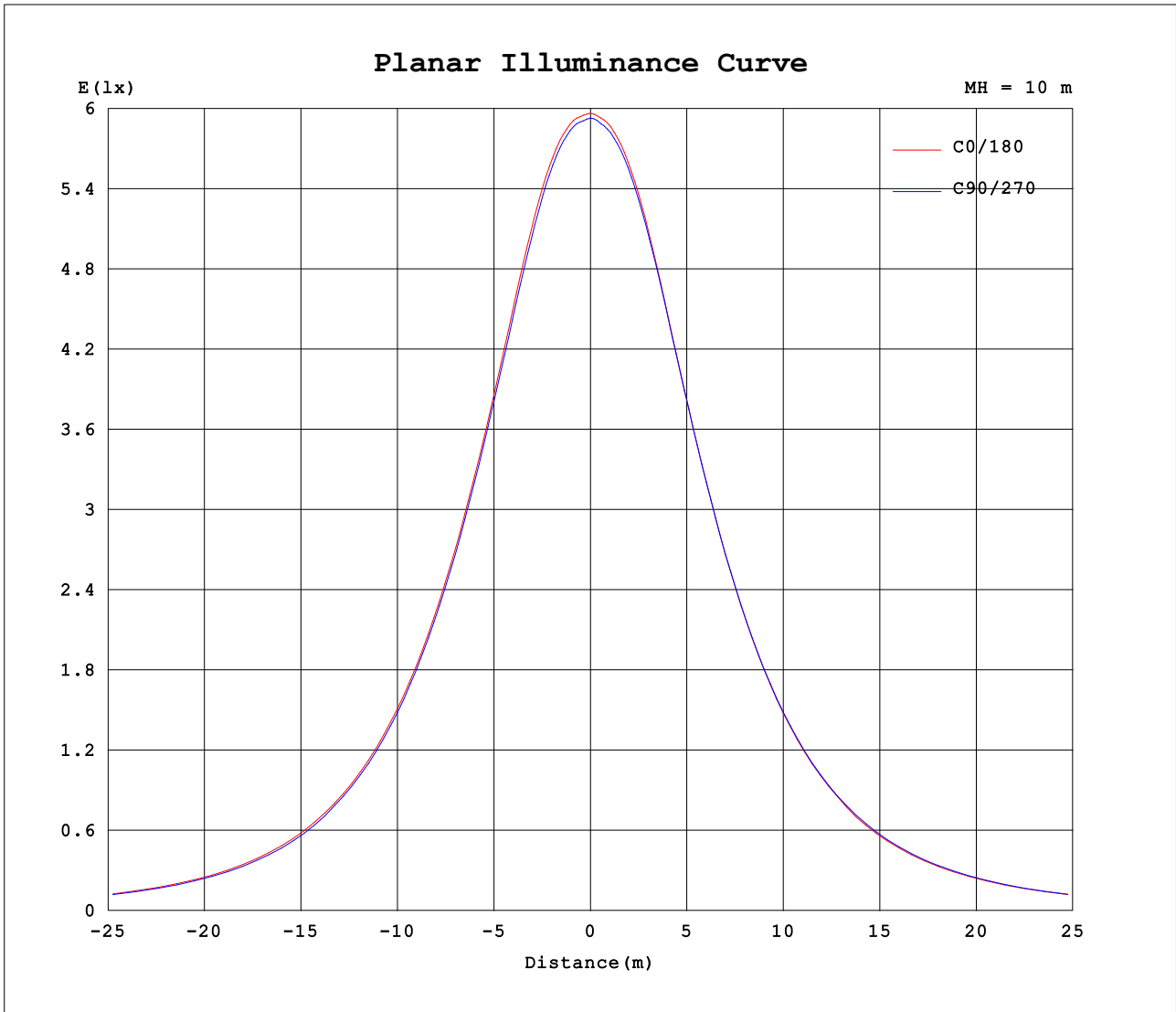
AvgL	cd/m2
L_0~180 (65) av	3709
L_0~180 (75) av	4009
L_0~180 (85) av	6645
L_90~270 (65) av	3666
L_90~270 (75) av	3970
L_90~270 (85) av	6537
L_45 (65) av	3677
L_45 (75) av	3965
L_45 (85) av	6555

Standard: GB/T 29293-2012

C Range: 0 - 360DEG
 C Interval: 30.0DEG
 Test Speed: HIGH
 Temperature:25.3DEG
 Operators:admin
 Test Date:2022-03-16

Range: 0 - 180DEG
 Interval: 1.0DEG
 Test System:EVERFINE GO-2000B_V1 SYSTEM V2.00.411
 Humidity:65.0%
 Test Distance:8.780m [K=1.0000]
 Remarks:

Planar Illuminance Curve



C Range: 0 - 360DEG
 C Interval: 30.0DEG
 Test Speed: HIGH
 Temperature:25.3DEG
 Operators:admin
 Test Date:2022-03-16

Range: 0 - 180DEG
 Interval: 1.0DEG
 Test System:EVERFINE GO-2000B_V1 SYSTEM V2.00.411
 Humidity:65.0%
 Test Distance:8.780m [K=1.0000]
 Remarks:

LUMINOUS DISTRIBUTION INTENSITY DATA

Test:U:119.94V I:0.3762A P:40.595W PF:0.8990 Freq:60.00Hz Lamp Flux:2138.29x1 lm		
NAME: ASD lighting Corp	TYPE:	WEIGHT:
SPEC.:ASD-LFC-HN-20D42-AC-2700K	DIM.:	SERIAL No.:
MFR.: ASD lighting Corp	SUR.:0.43*0.39	Shielding Angle:

Table--1

UNIT: cd

C (DEG) □ (DEG)	0	30	60	90	120	150	180	210	240	270	300	330							
0	597	596	594	593	592	592	597	596	594	593	592	592							
5	598	598	595	593	592	590	596	593	592	592	591	592							
10	597	596	593	591	590	588	594	590	590	589	589	590							
15	589	586	584	581	580	578	585	582	581	580	581	581							
20	571	568	566	563	562	560	566	564	564	564	565	565							
25	547	546	542	540	538	537	542	540	541	541	542	541							
30	521	521	515	514	511	510	515	513	514	515	516	515							
35	492	492	487	485	481	480	485	484	485	485	487	488							
40	461	460	456	454	449	448	453	452	454	454	456	457							
45	428	427	422	420	415	413	418	417	420	420	422	423							
50	391	391	386	383	378	377	381	380	383	384	386	386							
55	352	350	348	340	340	335	338	342	340	345	344	347							
60	311	307	306	300	300	296	299	302	301	305	304	307							
65	268	264	264	258	257	255	258	260	259	262	262	264							
70	223	220	219	215	214	212	214	215	216	218	219	221							
75	177	176	172	171	169	169	171	170	173	173	175	174							
80	134	134	130	130	127	129	130	129	131	131	133	132							
85	98.0	97.7	95.5	95.3	94.2	95.2	96.2	95.4	96.2	95.8	96.8	95.9							
90	69.6	69.3	68.7	69.7	70.1	72.1	73.1	72.0	71.8	70.0	69.5	68.1							
95	53.3	53.6	53.9	55.1	56.4	58.6	59.5	58.5	57.4	55.1	53.5	52.0							
100	47.2	47.7	47.6	48.0	48.6	49.8	50.1	49.4	48.4	46.6	45.5	45.2							
105	42.3	42.8	43.1	43.8	44.5	45.1	45.0	44.3	43.5	42.4	41.3	40.5							
110	36.3	36.7	37.0	38.4	39.1	40.5	40.5	40.0	39.1	37.4	35.6	35.0							
115	30.9	31.1	31.4	32.6	33.3	34.9	34.6	34.5	33.2	31.5	29.8	29.3							
120	22.3	25.6	25.6	26.7	28.0	29.6	26.0	29.3	28.3	26.6	24.5	24.1							
125	17.9	20.2	20.4	21.6	22.9	24.1	21.3	24.0	23.3	21.4	19.7	19.2							
130	14.0	15.9	16.4	17.4	18.6	19.4	17.4	19.2	18.6	17.1	15.7	14.8							
135	11.5	12.3	12.7	13.6	14.6	15.3	13.8	15.1	14.9	13.6	12.2	11.3							
140	9.22	9.71	10.1	10.7	11.5	12.3	11.4	12.2	11.8	10.5	9.48	8.84							
145	9.05	8.91	8.92	9.30	9.44	9.97	9.37	9.62	9.48	8.85	8.22	8.03							
150	9.40	9.20	9.37	9.47	9.43	9.58	8.92	8.68	8.79	8.78	8.64	8.65							
155	9.97	9.74	9.81	10.1	10.1	10.1	9.62	9.38	9.39	9.55	9.33	9.30							
160	10.5	10.4	10.2	10.5	10.6	10.4	10.3	9.88	9.84	10.2	10.0	9.80							
165	10.8	10.6	10.6	11.2	11.0	10.7	10.8	10.5	10.6	10.8	10.5	10.3							
170	10.7	10.6	10.5	11.0	10.7	10.7	10.8	10.6	10.9	10.9	10.7	10.5							
175	10.3	10.2	10.1	10.4	10.2	10.2	10.4	10.2	10.1	10.4	10.1	9.99							
180	10.0	9.88	9.89	9.94	9.77	9.75	10.1	9.88	9.92	9.95	9.77	9.76							

C Range: 0 - 360DEG
 C Interval: 30.0DEG
 Test Speed: HIGH
 Temperature:25.3DEG
 Operators:admin
 Test Date:2022-03-16

□ Range: 0 - 180DEG
 □ Interval: 1.0DEG
 Test System:EVERFINE GO-2000B_V1 SYSTEM V2.00.411
 Humidity:65.0%
 Test Distance:8.780m [K=1.0000]
 Remarks: