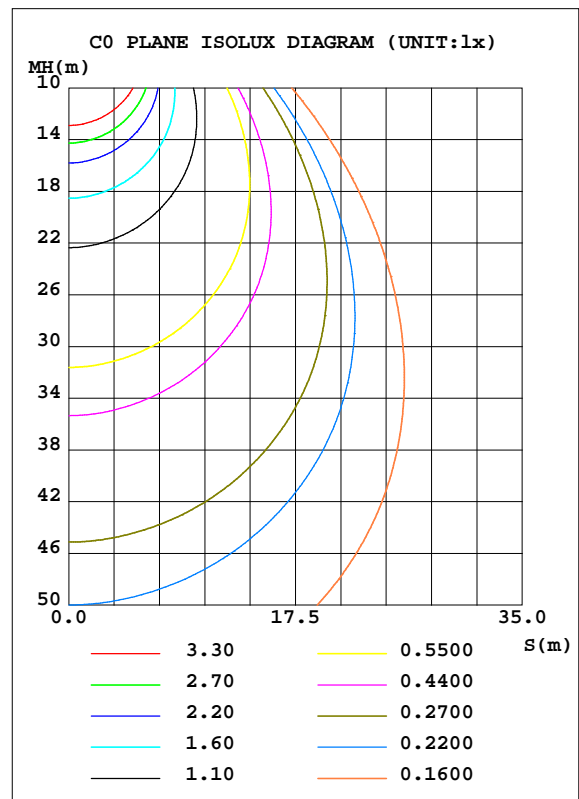
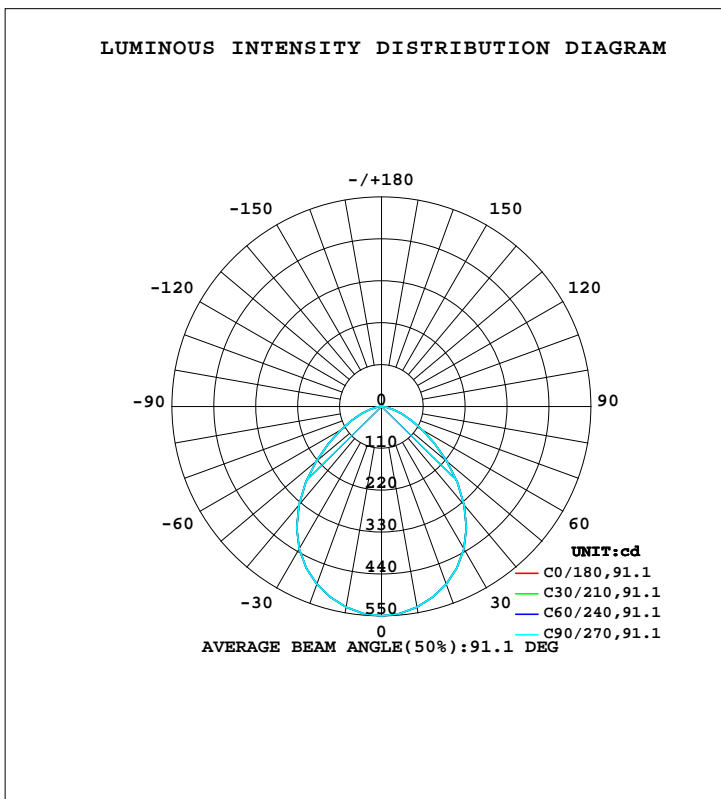


LUMINAIRE PHOTOMETRIC TEST REPORT

NAME: LED DOWNLIGHT	TYPE:	WEIGHT:
SPEC.:	DIM.:	SERIAL No.:
MFR.: ASD LIGHTING CORP	SUR.: 0.1*0.1	Shielding Angle:

DATA OF LAMP		PHOTOMETRIC DATA			
MODEL	4DA13AC(13W 4000K)	Imax(cd)	549.7	S/MH(C0/180)	1.18
NOMINAL POWER(W)	13	LOR(%)	100.0	S/MH(C90/270)	1.18
RATED VOLTAGE(V)	100-277	TOTAL FLUX(lm)	1170.7	h UP, DN(C0-180)	0.5, 49.5
NOMINAL FLUX(lm)	1170.72	CIE CLASS	DIRECT	h UP, DN(C180-360)	0.5, 49.5
LAMPS INSIDE	1	h up(%)	1.0	CIBSE SHR NOM	1.25
TEST VOLTAGE(V)	120	h down(%)	99.0	CIBSE SHR MAX	1.30



C Range: 0 - 360DEG
 C Interval: 15.0DEG
 Test Speed: HIGH
 Temperature: 25.3DEG
 Operators:
 Test Date: 2020-06-15

g Range: 0 - 180DEG
 g Interval: 5.0DEG
 Test System: EVERFINE GO-2000B_V1 SYSTEM V2.00.426
 Humidity: 65.0%
 Test Distance: 8.000m [K=1.0000]
 Remarks:

ZONAL FLUX DIAGRAM

ZONAL FLUX DIAGRAM:

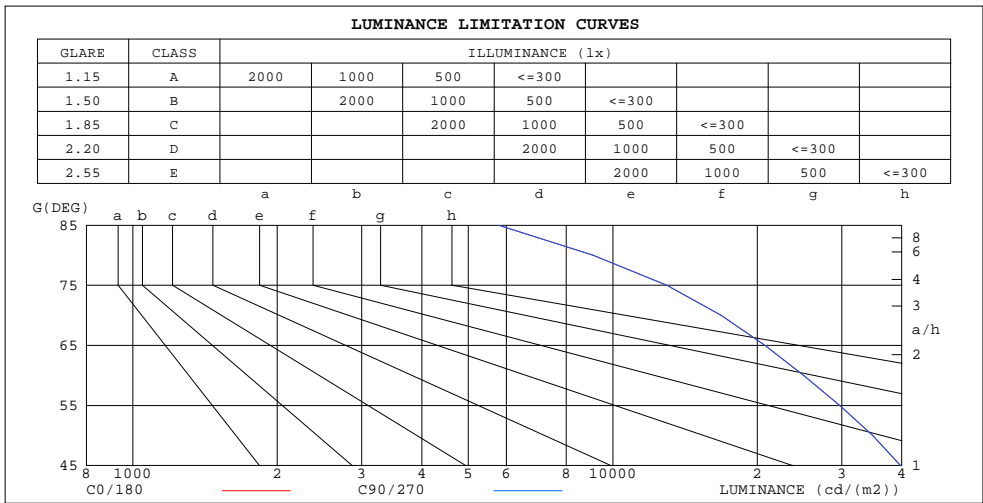
g	C0	C45	C90	C135	C180	C225	C270	C315	g	F zone	F total	%lum,lamp
10	534.8	534.8	534.8	534.8	534.8	534.8	534.8	534.8	0- 10	51.74	51.74	4.42,4.42
20	496.5	496.5	496.5	496.5	496.5	496.5	496.5	496.5	10- 20	146.2	197.9	16.9,16.9
30	432.9	432.9	432.9	432.9	432.9	432.9	432.9	432.9	20- 30	215.2	413.1	35.3,35.3
40	337.8	337.8	337.8	337.8	337.8	337.8	337.8	337.8	30- 40	242.3	655.4	56,56
50	223.9	223.9	223.9	223.9	223.9	223.9	223.9	223.9	40- 50	216.8	872.2	74.5,74.5
60	124.8	124.8	124.8	124.8	124.8	124.8	124.8	124.8	50- 60	154.0	1026	87.7,87.7
70	57.54	57.54	57.54	57.54	57.54	57.54	57.54	57.54	60- 70	88.47	1115	95.2,95.2
80	15.76	15.76	15.76	15.76	15.76	15.76	15.76	15.76	70- 80	36.98	1152	98.4,98.4
90	0.3966	0.3966	0.3966	0.3966	0.3966	0.3966	0.3966	0.3966	80- 90	7.147	1159	99,99
100	0.7423	0.7423	0.7423	0.7423	0.7423	0.7423	0.7423	0.7423	90-100	0.6113	1159	99,99
110	1.223	1.223	1.223	1.223	1.223	1.223	1.223	1.223	100-110	1.032	1160	99.1,99.1
120	1.756	1.756	1.756	1.756	1.756	1.756	1.756	1.756	110-120	1.478	1162	99.2,99.2
130	2.313	2.313	2.313	2.313	2.313	2.313	2.313	2.313	120-130	1.821	1164	99.4,99.4
140	2.808	2.808	2.808	2.808	2.808	2.808	2.808	2.808	130-140	1.983	1166	99.6,99.6
150	3.261	3.261	3.261	3.261	3.261	3.261	3.261	3.261	140-150	1.903	1168	99.7,99.7
160	3.694	3.694	3.694	3.694	3.694	3.694	3.694	3.694	150-160	1.603	1169	99.9,99.9
170	4.051	4.051	4.051	4.051	4.051	4.051	4.051	4.051	160-170	1.097	1170	100,100
180	4.233	4.233	4.233	4.233	4.233	4.233	4.233	4.233	170-180	0.3943	1171	100,100
DEG	LUMINOUS INTENSITY:cd									UNIT:lm		

C Range: 0 - 360DEG
 C Interval: 15.0DEG
 Test Speed: HIGH
 Temperature:25.3DEG
 Operators:
 Test Date:2020-06-15

g Range: 0 - 180DEG
 g Interval: 5.0DEG
 Test System:EVERFINE GO-2000B_V1 SYSTEM V2.00.426
 Humidity:65.0%
 Test Distance:8.000m [K=1.0000]
 Remarks:

LUMINANCE LIMITATION CURVES

NAME: LED DOWNLIGHT	TYPE:	WEIGHT:
SPEC.:	DIM.:	SERIAL No.:
MFR.: ASD LIGHTING CORP	SUR.: 0.1*0.1	Shielding Angle:



LUMINANCE cd/(m2)		
G(DEG)	C0/180	C90/270
85	5795	5795
80	9078	9078
75	12946	12946
70	16824	16824
65	20763	20763
60	24969	24969
55	29712	29712
50	34833	34833
45	39815	39815

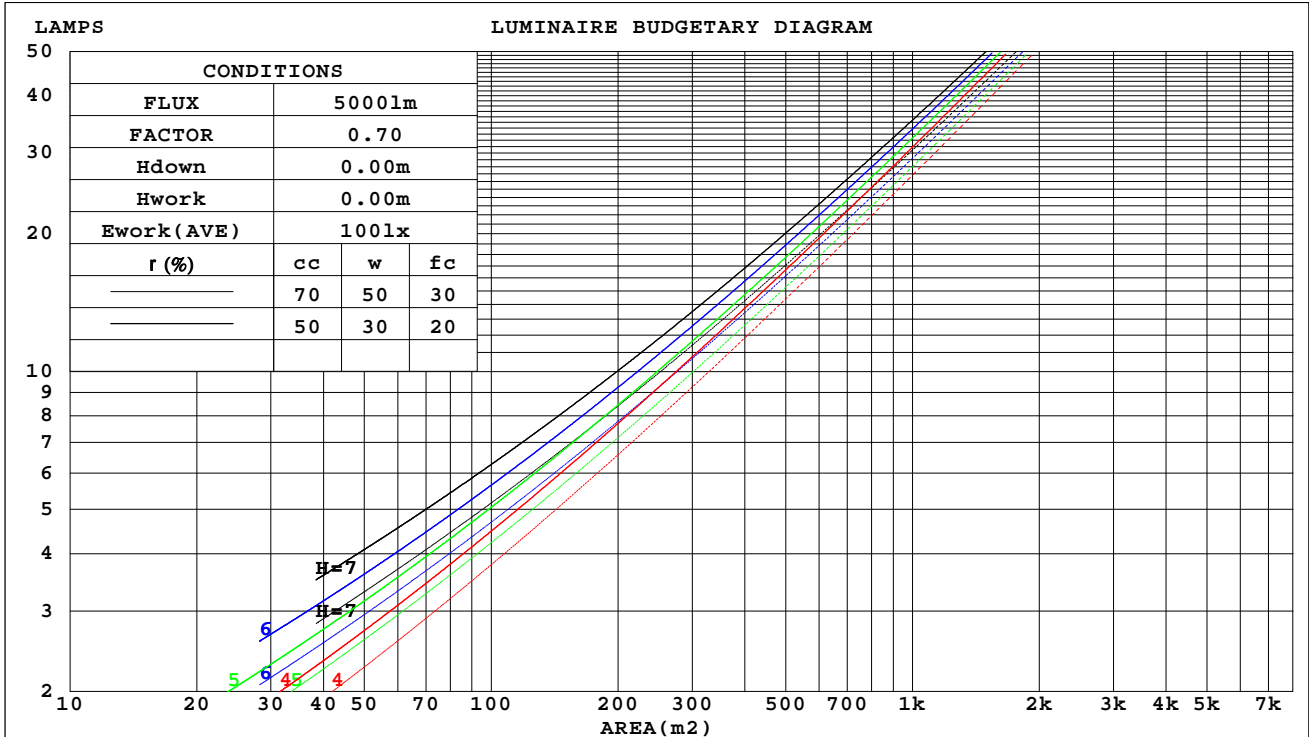
C Range: 0 - 360DEG
 C Interval: 15.0DEG
 Test Speed: HIGH
 Temperature: 25.3DEG
 Operators:
 Test Date: 2020-06-15

g Range: 0 - 180DEG
 g Interval: 5.0DEG
 Test System: EVERFINE GO-2000B_V1 SYSTEM V2.00.426
 Humidity: 65.0%
 Test Distance: 8.000m [K=1.0000]
 Remarks:

CU AND LUMINAIRE BUDGETARY ESTIMATE DIAGRAM

NAME: LED DOWNLIGHT	TYPE:	WEIGHT:
SPEC.:	DIM.:	SERIAL No.:
MFR.: ASD LIGHTING CORP	SUR.: 0.1*0.1	Shielding Angle:

r _{cc}	80%			70%			50%			30%			10%			0
r _w	50%	30%	10%	50%	30%	10%	50%	30%	10%	50%	30%	10%	50%	30%	10%	0
r _{fc}	20%			20%			20%			20%			20%			0
RCR	RCR:Room Cavity Ratio						Coefficients of Utilization(CU)									
0.0	1.19	1.19	1.19	1.16	1.16	1.16	1.11	1.11	1.11	1.06	1.06	1.06	1.01	1.01	1.01	.99
1.0	1.06	1.03	.99	1.04	1.01	.98	.90	.97	.95	.96	.93	.91	.92	.90	.89	.87
2.0	.95	.89	.84	.93	.87	.83	.89	.85	.81	.86	.82	.79	.83	.80	.77	.75
3.0	.84	.77	.72	.83	.76	.71	.80	.74	.70	.77	.72	.68	.74	.70	.67	.65
4.0	.76	.68	.62	.74	.67	.62	.72	.66	.61	.70	.64	.60	.67	.63	.59	.57
5.0	.68	.60	.54	.67	.60	.54	.65	.59	.53	.63	.57	.53	.61	.56	.52	.50
6.0	.62	.54	.48	.61	.54	.48	.59	.53	.47	.58	.52	.47	.56	.51	.46	.45
7.0	.57	.49	.43	.56	.48	.43	.54	.48	.42	.53	.47	.42	.52	.46	.42	.40
8.0	.52	.44	.39	.51	.44	.39	.50	.43	.38	.49	.43	.38	.48	.42	.38	.36
9.0	.48	.40	.35	.47	.40	.35	.46	.40	.35	.45	.39	.35	.44	.39	.34	.33
10.0	.45	.37	.32	.44	.37	.32	.43	.36	.32	.42	.36	.32	.41	.36	.32	.30



C Range: 0 - 360DEG
 C Interval: 15.0DEG
 Test Speed: HIGH
 Temperature: 25.3DEG
 Operators:
 Test Date: 2020-06-15

g Range: 0 - 180DEG
 g Interval: 5.0DEG
 Test System: EVERFINE GO-2000B_V1 SYSTEM V2.00.426
 Humidity: 65.0%
 Test Distance: 8.000m [K=1.0000]
 Remarks:

WEC AND CCEC

NAME: LED DOWNLIGHT	TYPE:	WEIGHT:
SPEC.:	DIM.:	SERIAL No.:
MFR.: ASD LIGHTING CORP	SUR.: 0.1*0.1	Shielding Angle:

r _{cc}	80%			70%			50%			30%			10%			0
r _w	50%	30%	10%	50%	30%	10%	50%	30%	10%	50%	30%	10%	50%	30%	10%	0
r _{fc}	20%			20%			20%			20%			20%			0
RCR	RCR:Room Cavity Ratio						Wall Exitance Coefficients(WEC)									
0.0																
1.0	.259	.147	.047	.251	.143	.046	.238	.136	.044	.225	.130	.042	.214	.124	.040	
2.0	.250	.137	.042	.243	.134	.041	.231	.129	.040	.221	.124	.039	.210	.119	.038	
3.0	.236	.125	.038	.230	.123	.037	.220	.119	.036	.210	.115	.035	.201	.111	.034	
4.0	.221	.115	.034	.216	.113	.033	.207	.110	.033	.198	.107	.032	.190	.103	.032	
5.0	.207	.106	.031	.203	.104	.030	.195	.101	.030	.187	.099	.029	.180	.096	.029	
6.0	.194	.097	.028	.190	.096	.028	.183	.094	.027	.176	.092	.027	.170	.089	.027	
7.0	.183	.090	.026	.179	.089	.025	.173	.087	.025	.166	.085	.025	.161	.083	.025	
8.0	.172	.084	.024	.169	.083	.023	.163	.081	.023	.157	.080	.023	.152	.078	.023	
9.0	.162	.078	.022	.159	.078	.022	.154	.076	.022	.149	.075	.021	.144	.073	.021	
10.0	.153	.074	.020	.151	.073	.020	.146	.072	.020	.142	.070	.020	.137	.069	.020	

r _{cc}	80%			70%			50%			30%			10%			0
r _w	50%	30%	10%	50%	30%	10%	50%	30%	10%	50%	30%	10%	50%	30%	10%	0
r _{fc}	20%			20%			20%			20%			20%			0
RCR	RCR:Room Cavity Ratio						Ceiling Cavity Exitance Coefficients(CCEC)									
0.0	.198	.198	.198	.169	.169	.169	.116	.116	.116	.066	.066	.066	.021	.021	.021	
1.0	.185	.164	.146	.158	.141	.126	.108	.097	.087	.062	.056	.051	.020	.018	.016	
2.0	.174	.140	.111	.149	.121	.096	.102	.083	.067	.059	.048	.039	.019	.016	.013	
3.0	.166	.122	.087	.142	.105	.075	.098	.073	.053	.056	.043	.031	.018	.014	.010	
4.0	.158	.108	.070	.135	.094	.061	.093	.065	.043	.054	.038	.025	.017	.012	.008	
5.0	.151	.098	.059	.129	.084	.051	.089	.059	.036	.052	.035	.021	.017	.011	.007	
6.0	.144	.089	.050	.124	.077	.043	.085	.054	.031	.049	.032	.018	.016	.010	.006	
7.0	.137	.082	.043	.118	.071	.038	.082	.050	.027	.047	.029	.016	.015	.010	.005	
8.0	.131	.076	.038	.113	.066	.034	.078	.046	.024	.046	.027	.014	.015	.009	.005	
9.0	.126	.071	.035	.108	.062	.030	.075	.044	.021	.044	.026	.013	.014	.008	.004	
10.0	.120	.067	.032	.104	.058	.028	.072	.041	.020	.042	.024	.012	.014	.008	.004	

C Range: 0 - 360DEG
 C Interval: 15.0DEG
 Test Speed: HIGH
 Temperature:25.3DEG
 Operators:
 Test Date:2020-06-15

g Range: 0 - 180DEG
 g Interval: 5.0DEG
 Test System:EVERFINE GO-2000B_V1 SYSTEM V2.00.426
 Humidity:65.0%
 Test Distance:8.000m [K=1.0000]
 Remarks:

UGR(Unified Glare Rating) Table

NAME: LED DOWNLIGHT		TYPE:					WEIGHT:				
SPEC.:		DIM.:					SERIAL No.:				
MFR.: ASD LIGHTING CORP		SUR.: 0.1*0.1					Shielding Angle:				
ceiling/cavity	0.7	0.7	0.5	0.5	0.3	0.7	0.7	0.5	0.5	0.3	
walls	0.5	0.3	0.5	0.3	0.3	0.5	0.3	0.5	0.3	0.3	
working plane	0.2	0.2	0.2	0.2	0.2	0.2	0.2	0.2	0.2	0.2	
Room dimensions	Viewed crosswise					Viewed endwise					
x = 2H y = 2H	23.5	24.8	23.7	25.0	25.2	23.5	24.8	23.7	25.0	25.2	
3H	24.1	25.3	24.4	25.6	25.8	24.1	25.3	24.4	25.6	25.8	
4H	24.2	25.4	24.6	25.7	25.9	24.2	25.4	24.6	25.7	25.9	
6H	24.3	25.4	24.6	25.7	25.9	24.3	25.4	24.6	25.7	25.9	
8H	24.2	25.3	24.6	25.6	25.9	24.2	25.3	24.6	25.6	25.9	
12H	24.2	25.2	24.6	25.5	25.9	24.2	25.2	24.6	25.5	25.9	
4H 2H	23.7	24.9	24.1	25.2	25.4	23.7	24.9	24.1	25.2	25.4	
3H	24.5	25.5	24.8	25.8	26.1	24.5	25.5	24.8	25.8	26.1	
4H	24.7	25.6	25.1	26.0	26.3	24.7	25.6	25.1	26.0	26.3	
6H	24.8	25.6	25.2	26.0	26.4	24.8	25.6	25.2	26.0	26.4	
8H	24.8	25.5	25.2	25.9	26.3	24.8	25.5	25.2	25.9	26.3	
12H	24.8	25.5	25.2	25.9	26.3	24.8	25.5	25.2	25.9	26.3	
8H 4H	24.7	25.5	25.2	25.9	26.3	24.7	25.5	25.2	25.9	26.3	
6H	24.9	25.5	25.3	25.9	26.4	24.9	25.5	25.3	25.9	26.4	
8H	24.9	25.4	25.4	25.9	26.3	24.9	25.4	25.4	25.9	26.3	
12H	24.9	25.3	25.4	25.8	26.3	24.9	25.3	25.4	25.8	26.3	
12H 4H	24.7	25.4	25.1	25.8	26.2	24.7	25.4	25.1	25.8	26.2	
6H	24.9	25.4	25.3	25.8	26.3	24.9	25.4	25.3	25.8	26.3	
8H	24.9	25.3	25.4	25.8	26.3	24.9	25.3	25.4	25.8	26.3	
Variations with the observer position at spacings(CIE Pub.117):											
S = 1.0H	+ 0.5 / - 0.6					+ 0.5 / - 0.6					
1.5H	+ 0.3 / - 0.3					+ 0.3 / - 0.3					
2.0H	+ 1.0 / - 1.1					+ 1.0 / - 1.1					

CIE Pub.117, 1171 lm Total Lamp Luminous Flux Correct (8log(F/F0) = 0.5)
 Area: 0.01 m2

C Range: 0 - 360DEG
 C Interval: 15.0DEG
 Test Speed: HIGH
 Temperature:25.3DEG
 Operators:
 Test Date:2020-06-15

g Range: 0 - 180DEG
 g Interval: 5.0DEG
 Test System:EVERFINE GO-2000B_V1 SYSTEM V2.00.426
 Humidity:65.0%
 Test Distance:8.000m [K=1.0000]
 Remarks:

UTILIZATION FACTORS TABLE

NAME: LED DOWNLIGHT	TYPE:	WEIGHT:
SPEC.:	DIM.:	SERIAL No.:
MFR.: ASD LIGHTING CORP	SUR.: 0.1*0.1	Shielding Angle:

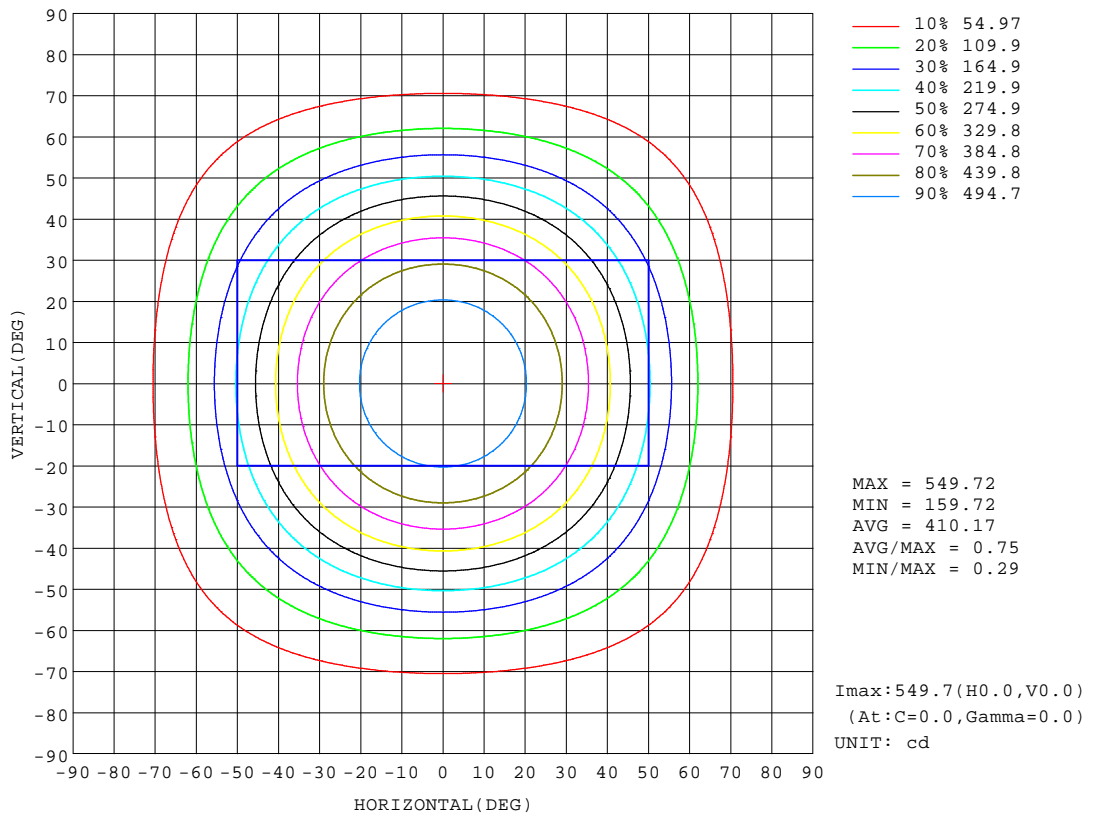
REFLECTANCE										
Ceiling	0.8	0.8	0.8	0.7	0.7	0.7	0.5	0.5	0.5	0
Walls	0.7	0.5	0.3	0.7	0.5	0.3	0.7	0.5	0.3	0
Working plane	0.2	0.2	0.2	0.2	0.2	0.2	0.2	0.2	0.2	0
ROOM INDEX	UTILIZATION FACTORS(PERCENT) $k(RI) \times RCR = 5$									
k = 0.60	64	53	47	63	53	47	62	53	47	41
0.80	74	64	57	73	63	57	71	63	57	50
1.00	82	73	66	81	72	66	79	73	65	59
1.25	89	80	74	87	79	73	85	78	72	66
1.50	93	85	79	92	84	79	89	82	77	71
2.00	99	92	87	97	91	86	94	89	84	77
2.50	102	96	91	100	94	90	97	92	88	80
3.00	105	100	95	103	98	94	99	95	91	83
4.00	109	104	100	106	102	98	102	99	96	87
5.00	110	106	103	108	104	101	104	101	98	89
ROOM INDEX	UF(total)									Direct
According to DIN EN 13032-2 2004			Suspended				SHRNOM = 1.25			

C Range: 0 - 360DEG
 C Interval: 15.0DEG
 Test Speed: HIGH
 Temperature: 25.3DEG
 Operators:
 Test Date: 2020-06-15

g Range: 0 - 180DEG
 g Interval: 5.0DEG
 Test System: EVERFINE GO-2000B_V1 SYSTEM V2.00.426
 Humidity: 65.0%
 Test Distance: 8.000m [K=1.0000]
 Remarks:

ISOCANDELA DIAGRAM

NAME: LED DOWNLIGHT	TYPE:	WEIGHT:
SPEC.:	DIM.:	SERIAL No.:
MFR.: ASD LIGHTING CORP	SUR.: 0.1*0.1	Shielding Angle:



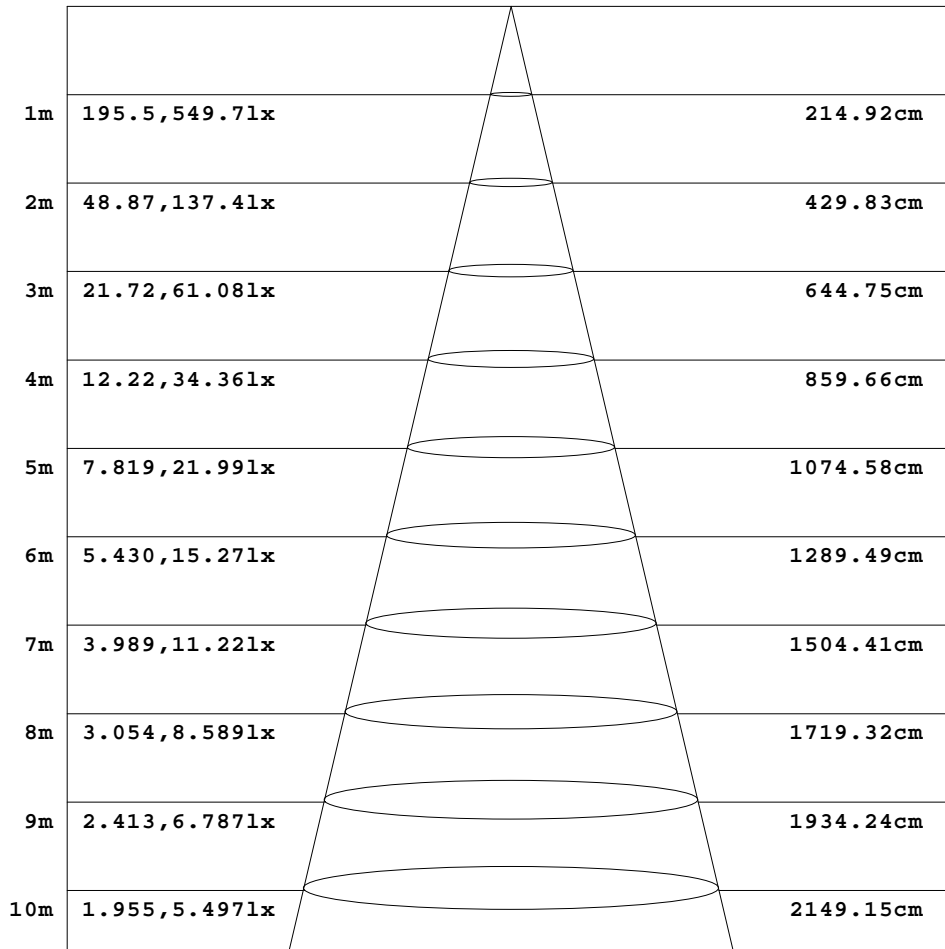
C Range: 0 - 360DEG
 C Interval: 15.0DEG
 Test Speed: HIGH
 Temperature: 25.3DEG
 Operators:
 Test Date: 2020-06-15

g Range: 0 - 180DEG
 Interval: 5.0DEG
 Test System: EVERFINE GO-2000B_V1 SYSTEM V2.00.426
 Humidity: 65.0%
 Test Distance: 8.000m [K=1.0000]
 Remarks:

AAI Figure

NAME: LED DOWNLIGHT	TYPE:	WEIGHT:
SPEC.:	DIM.:	SERIAL No.:
MFR.: ASD LIGHTING CORP	SUR.: 0.1*0.1	Shielding Angle:

Flux out:872.2 lm



Height Eavg, Emax Angle:94.12deg Diameter

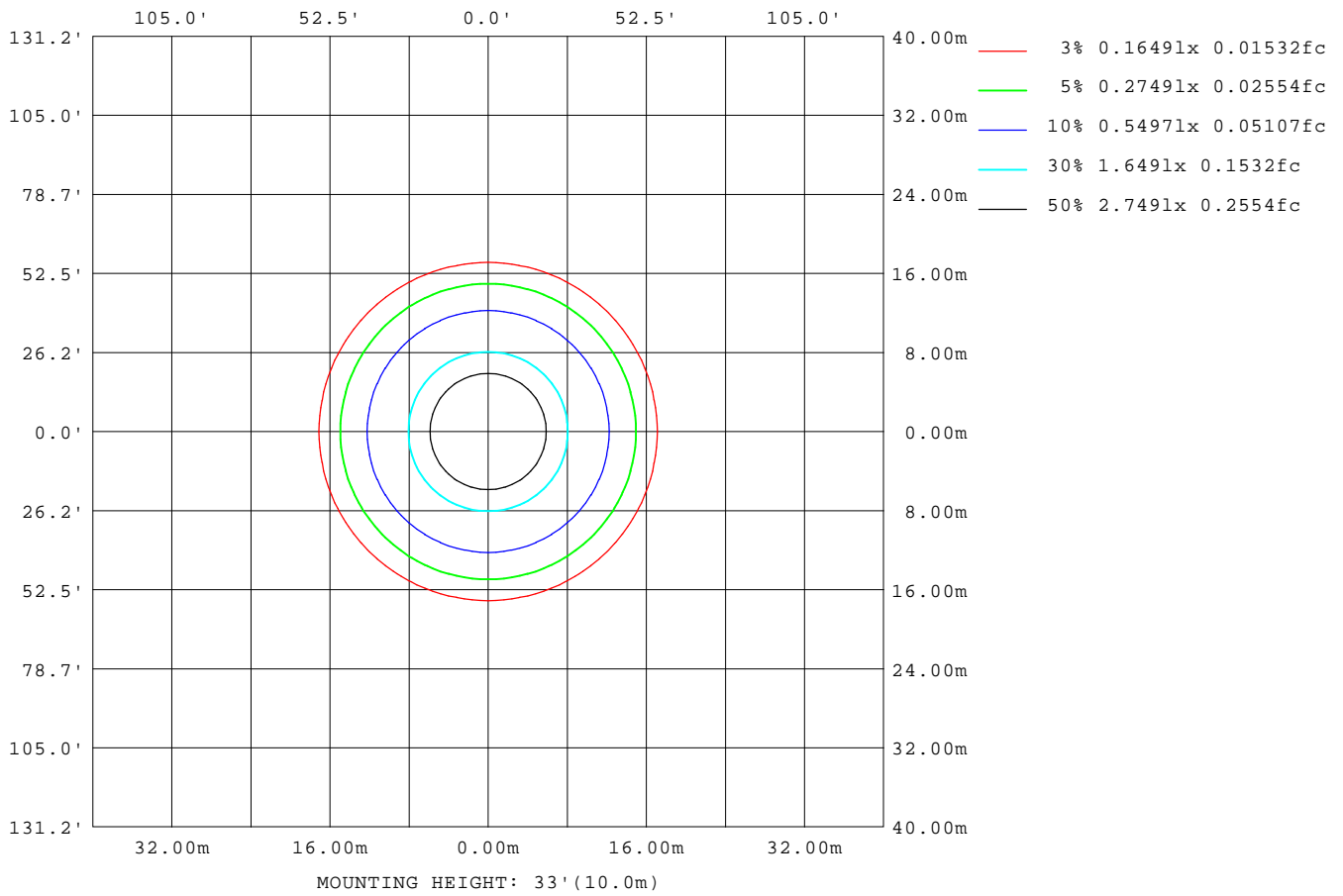
Note:The Curves indicate the illuminated area and the average illumination when the luminaire is at different distance.

C Range: 0 - 360DEG
 C Interval: 15.0DEG
 Test Speed: HIGH
 Temperature:25.3DEG
 Operators:
 Test Date:2020-06-15

g Range: 0 - 180DEG
 g Interval: 5.0DEG
 Test System:EVERFINE GO-2000B_V1 SYSTEM V2.00.426
 Humidity:65.0%
 Test Distance:8.000m [K=1.0000]
 Remarks:

ISOLUX DIAGRAM

NAME: LED DOWNLIGHT	TYPE:	WEIGHT:
SPEC.:	DIM.:	SERIAL No.:
MFR.: ASD LIGHTING CORP	SUR.: 0.1*0.1	Shielding Angle:



C Range: 0 - 360DEG
 C Interval: 15.0DEG
 Test Speed: HIGH
 Temperature: 25.3DEG
 Operators:
 Test Date: 2020-06-15

g Range: 0 - 180DEG
 g Interval: 5.0DEG
 Test System: EVERFINE GO-2000B_V1 SYSTEM V2.00.426
 Humidity: 65.0%
 Test Distance: 8.000m [K=1.0000]
 Remarks:

LED Avg.L Report

NAME: LED DOWNLIGHT	TYPE:	WEIGHT:
SPEC.:	DIM.:	SERIAL No.:
MFR.: ASD LIGHTING CORP	SUR.: 0.1*0.1	Shielding Angle:

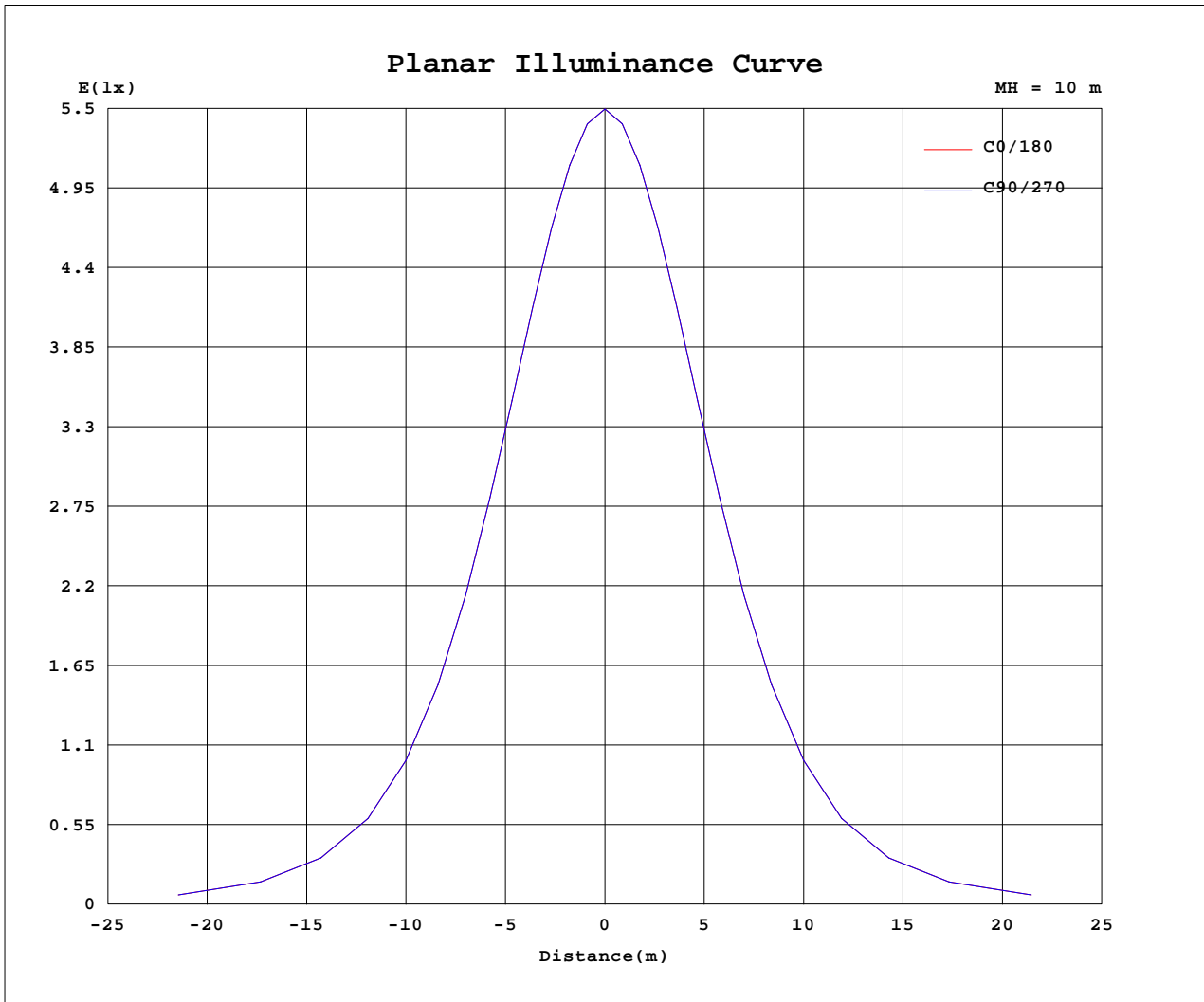
AvgL	cd/m2
L_0~180(65)av	20763
L_0~180(75)av	12946
L_0~180(85)av	5795
L_90~270(65)av	20763
L_90~270(75)av	12946
L_90~270(85)av	5795
L_45(65)av	20763
L_45(75)av	12946
L_45(85)av	5795

Standard: GB/T 29293-2012

C Range: 0 - 360DEG
 C Interval: 15.0DEG
 Test Speed: HIGH
 Temperature: 25.3DEG
 Operators:
 Test Date: 2020-06-15

g Range: 0 - 180DEG
 g Interval: 5.0DEG
 Test System: EVERFINE GO-2000B_V1 SYSTEM V2.00.426
 Humidity: 65.0%
 Test Distance: 8.000m [K=1.0000]
 Remarks:

Planar Illuminance Curve



C Range: 0 - 360DEG
 C Interval: 15.0DEG
 Test Speed: HIGH
 Temperature: 25.3DEG
 Operators:
 Test Date: 2020-06-15

g Range: 0 - 180DEG
 g Interval: 5.0DEG
 Test System: EVERFINE GO-2000B_V1 SYSTEM V2.00.426
 Humidity: 65.0%
 Test Distance: 8.000m [K=1.0000]
 Remarks:

LUMINOUS DISTRIBUTION INTENSITY DATA

NAME: LED DOWNLIGHT	TYPE:	WEIGHT:
SPEC.:	DIM.:	SERIAL No.:
MFR.: ASD LIGHTING CORP	SUR.: 0.1*0.1	Shielding Angle:

Table--1

UNIT: cd

C(DEG) g (DEG)	0	15	30	45	60	75	90	105	120	135	150	165	180	195	210	225	240	255	270
0	550	550	550	550	550	550	550	550	550	550	550	550	550	550	550	550	550	550	550
5	546	546	546	546	546	546	546	546	546	546	546	546	546	546	546	546	546	546	546
10	535	535	535	535	535	535	535	535	535	535	535	535	535	535	535	535	535	535	535
15	519	519	519	519	519	519	519	519	519	519	519	519	519	519	519	519	519	519	519
20	496	496	496	496	496	496	496	496	496	496	496	496	496	496	496	496	496	496	496
25	468	468	468	468	468	468	468	468	468	468	468	468	468	468	468	468	468	468	468
30	433	433	433	433	433	433	433	433	433	433	433	433	433	433	433	433	433	433	433
35	389	389	389	389	389	389	389	389	389	389	389	389	389	389	389	389	389	389	389
40	338	338	338	338	338	338	338	338	338	338	338	338	338	338	338	338	338	338	338
45	282	282	282	282	282	282	282	282	282	282	282	282	282	282	282	282	282	282	282
50	224	224	224	224	224	224	224	224	224	224	224	224	224	224	224	224	224	224	224
55	170	170	170	170	170	170	170	170	170	170	170	170	170	170	170	170	170	170	170
60	125	125	125	125	125	125	125	125	125	125	125	125	125	125	125	125	125	125	125
65	87.7	87.7	87.7	87.7	87.7	87.7	87.7	87.7	87.7	87.7	87.7	87.7	87.7	87.7	87.7	87.7	87.7	87.7	87.7
70	57.5	57.5	57.5	57.5	57.5	57.5	57.5	57.5	57.5	57.5	57.5	57.5	57.5	57.5	57.5	57.5	57.5	57.5	57.5
75	33.5	33.5	33.5	33.5	33.5	33.5	33.5	33.5	33.5	33.5	33.5	33.5	33.5	33.5	33.5	33.5	33.5	33.5	33.5
80	15.8	15.8	15.8	15.8	15.8	15.8	15.8	15.8	15.8	15.8	15.8	15.8	15.8	15.8	15.8	15.8	15.8	15.8	15.8
85	5.05	5.05	5.05	5.05	5.05	5.05	5.05	5.05	5.05	5.05	5.05	5.05	5.05	5.05	5.05	5.05	5.05	5.05	5.05
90	0.40	0.40	0.40	0.40	0.40	0.40	0.40	0.40	0.40	0.40	0.40	0.40	0.40	0.40	0.40	0.40	0.40	0.40	0.40
95	0.55	0.55	0.55	0.55	0.55	0.55	0.55	0.55	0.55	0.55	0.55	0.55	0.55	0.55	0.55	0.55	0.55	0.55	0.55
100	0.74	0.74	0.74	0.74	0.74	0.74	0.74	0.74	0.74	0.74	0.74	0.74	0.74	0.74	0.74	0.74	0.74	0.74	0.74
105	0.97	0.97	0.97	0.97	0.97	0.97	0.97	0.97	0.97	0.97	0.97	0.97	0.97	0.97	0.97	0.97	0.97	0.97	0.97
110	1.22	1.22	1.22	1.22	1.22	1.22	1.22	1.22	1.22	1.22	1.22	1.22	1.22	1.22	1.22	1.22	1.22	1.22	1.22
115	1.49	1.49	1.49	1.49	1.49	1.49	1.49	1.49	1.49	1.49	1.49	1.49	1.49	1.49	1.49	1.49	1.49	1.49	1.49
120	1.76	1.76	1.76	1.76	1.76	1.76	1.76	1.76	1.76	1.76	1.76	1.76	1.76	1.76	1.76	1.76	1.76	1.76	1.76
125	2.03	2.03	2.03	2.03	2.03	2.03	2.03	2.03	2.03	2.03	2.03	2.03	2.03	2.03	2.03	2.03	2.03	2.03	2.03
130	2.31	2.31	2.31	2.31	2.31	2.31	2.31	2.31	2.31	2.31	2.31	2.31	2.31	2.31	2.31	2.31	2.31	2.31	2.31
135	2.57	2.57	2.57	2.57	2.57	2.57	2.57	2.57	2.57	2.57	2.57	2.57	2.57	2.57	2.57	2.57	2.57	2.57	2.57
140	2.81	2.81	2.81	2.81	2.81	2.81	2.81	2.81	2.81	2.81	2.81	2.81	2.81	2.81	2.81	2.81	2.81	2.81	2.81
145	3.04	3.04	3.04	3.04	3.04	3.04	3.04	3.04	3.04	3.04	3.04	3.04	3.04	3.04	3.04	3.04	3.04	3.04	3.04
150	3.26	3.26	3.26	3.26	3.26	3.26	3.26	3.26	3.26	3.26	3.26	3.26	3.26	3.26	3.26	3.26	3.26	3.26	3.26
155	3.47	3.47	3.47	3.47	3.47	3.47	3.47	3.47	3.47	3.47	3.47	3.47	3.47	3.47	3.47	3.47	3.47	3.47	3.47
160	3.69	3.69	3.69	3.69	3.69	3.69	3.69	3.69	3.69	3.69	3.69	3.69	3.69	3.69	3.69	3.69	3.69	3.69	3.69
165	3.89	3.89	3.89	3.89	3.89	3.89	3.89	3.89	3.89	3.89	3.89	3.89	3.89	3.89	3.89	3.89	3.89	3.89	3.89
170	4.05	4.05	4.05	4.05	4.05	4.05	4.05	4.05	4.05	4.05	4.05	4.05	4.05	4.05	4.05	4.05	4.05	4.05	4.05
175	4.17	4.17	4.17	4.17	4.17	4.17	4.17	4.17	4.17	4.17	4.17	4.17	4.17	4.17	4.17	4.17	4.17	4.17	4.17
180	4.23	4.23	4.23	4.23	4.23	4.23	4.23	4.23	4.23	4.23	4.23	4.23	4.23	4.23	4.23	4.23	4.23	4.23	4.23

C Range: 0 - 360DEG
 C Interval: 15.0DEG
 Test Speed: HIGH
 Temperature:25.3DEG
 Operators:
 Test Date:2020-06-15

g Range: 0 - 180DEG
 g Interval: 5.0DEG
 Test System:EVERFINE GO-2000B_V1 SYSTEM V2.00.426
 Humidity:65.0%
 Test Distance:8.000m [K=1.0000]
 Remarks:

LUMINOUS DISTRIBUTION INTENSITY DATA

NAME: LED DOWNLIGHT	TYPE:	WEIGHT:
SPEC.:	DIM.:	SERIAL No.:
MFR.: ASD LIGHTING CORP	SUR.: 0.1*0.1	Shielding Angle:

Table--2

UNIT: cd

C(DEG) g (DEG)	285	300	315	330	345														
0	550	550	550	550	550														
5	546	546	546	546	546														
10	535	535	535	535	535														
15	519	519	519	519	519														
20	496	496	496	496	496														
25	468	468	468	468	468														
30	433	433	433	433	433														
35	389	389	389	389	389														
40	338	338	338	338	338														
45	282	282	282	282	282														
50	224	224	224	224	224														
55	170	170	170	170	170														
60	125	125	125	125	125														
65	87.7	87.7	87.7	87.7	87.7														
70	57.5	57.5	57.5	57.5	57.5														
75	33.5	33.5	33.5	33.5	33.5														
80	15.8	15.8	15.8	15.8	15.8														
85	5.05	5.05	5.05	5.05	5.05														
90	0.40	0.40	0.40	0.40	0.40														
95	0.55	0.55	0.55	0.55	0.55														
100	0.74	0.74	0.74	0.74	0.74														
105	0.97	0.97	0.97	0.97	0.97														
110	1.22	1.22	1.22	1.22	1.22														
115	1.49	1.49	1.49	1.49	1.49														
120	1.76	1.76	1.76	1.76	1.76														
125	2.03	2.03	2.03	2.03	2.03														
130	2.31	2.31	2.31	2.31	2.31														
135	2.57	2.57	2.57	2.57	2.57														
140	2.81	2.81	2.81	2.81	2.81														
145	3.04	3.04	3.04	3.04	3.04														
150	3.26	3.26	3.26	3.26	3.26														
155	3.47	3.47	3.47	3.47	3.47														
160	3.69	3.69	3.69	3.69	3.69														
165	3.89	3.89	3.89	3.89	3.89														
170	4.05	4.05	4.05	4.05	4.05														
175	4.17	4.17	4.17	4.17	4.17														
180	4.23	4.23	4.23	4.23	4.23														

C Range: 0 - 360DEG
 C Interval: 15.0DEG
 Test Speed: HIGH
 Temperature: 25.3DEG
 Operators:
 Test Date: 2020-06-15

g Range: 0 - 180DEG
 g Interval: 5.0DEG
 Test System: EVERFINE GO-2000B_V1 SYSTEM V2.00.426
 Humidity: 65.0%
 Test Distance: 8.000m [K=1.0000]
 Remarks: