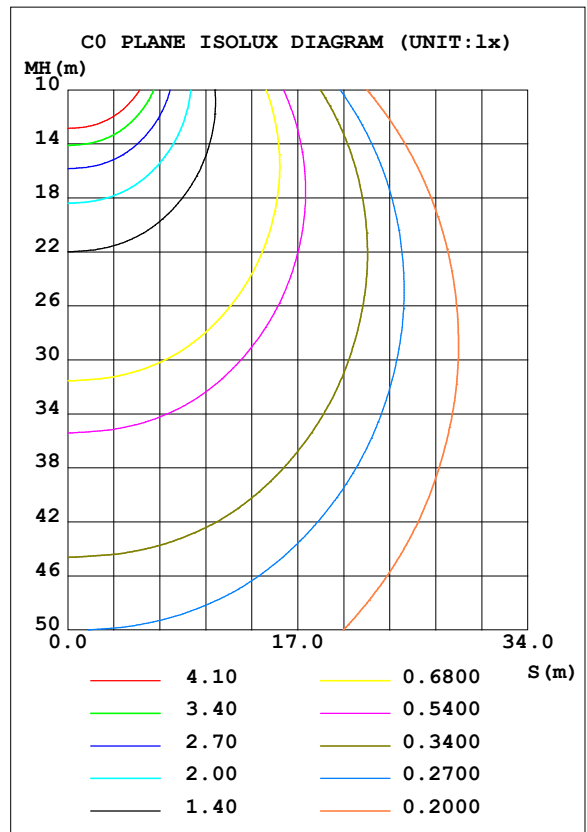
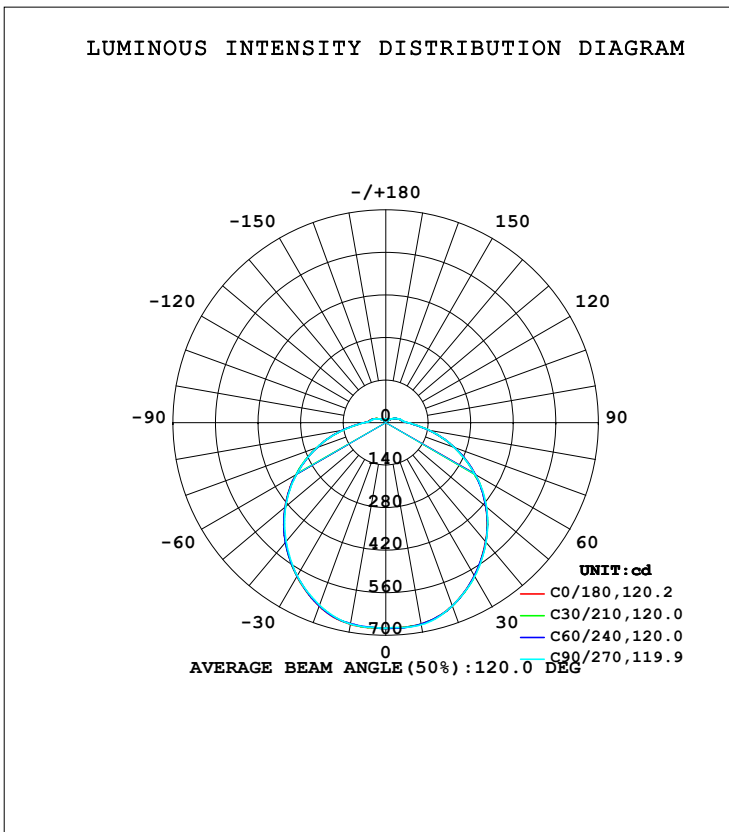


LUMINAIRE PHOTOMETRIC TEST REPORT

Test:U:119.97V I:0.3749A P:40.467W PF:0.8985 Freq:60.00Hz Lamp Flux:2381.47x1 lm		
NAME: ASD lighting Corp	TYPE:	WEIGHT:
SPEC.:ASD-LFC-HN-20D42-AC-3500K	DIM.:	SERIAL No.:
MFR.: ASD lighting Corp	SUR.:0.43*0.39	Shielding Angle:

DATA OF LAMP		PHOTOMETRIC DATA			
MODEL	ASD-LFC-HN-20D42-AC	Imax (cd)	677.6	S/MH (C0/180)	1.28
NOMINAL POWER (W)	--	LOR (%)	100.0	S/MH (C90/270)	1.28
RATED VOLTAGE (V)	--	TOTAL FLUX (lm)	2381.5	<input type="checkbox"/> UP, DN (C0-180)	4.1,46.1
NOMINAL FLUX (lm)	2381.47	CIE CLASS	DIRECT	<input type="checkbox"/> UP, DN (C180-360)	3.9,46.0
LAMPS INSIDE	1	<input type="checkbox"/> up (%)	7.9	CIBSE SHR NOM	1.50
TEST VOLTAGE (V)	--	<input type="checkbox"/> down (%)	92.1	CIBSE SHR MAX	1.50



C Range: 0 - 360DEG
 C Interval: 30.0DEG
 Test Speed: HIGH
 Temperature:25.3DEG
 Operators:admin
 Test Date:2022-03-16

Range: 0 - 180DEG
 Interval: 1.0DEG
 Test System:EVERFINE GO-2000B_V1 SYSTEM V2.00.411
 Humidity:65.0%
 Test Distance:8.780m [K=1.0000]
 Remarks:

ZONAL FLUX DIAGRAM

ZONAL FLUX DIAGRAM:

mm	C0	C45	C90	C135	C180	C225	C270	C315	mm	□ zone	□ total	%lum,lamp
10	672.5	672.9	675.2	674.4	673.5	672.1	672.7	672.4	0- 10	64.46	64.46	2.71,2.71
20	640.8	642.0	641.3	642.2	642.5	640.9	639.0	640.3	10- 20	186.6	251.1	10.5,10.5
30	582.8	583.5	585.2	585.1	584.7	584.0	583.2	583.1	20- 30	283.3	534.4	22.4,22.4
40	511.1	512.6	513.0	514.6	513.9	513.9	510.5	511.3	30- 40	344.0	878.4	36.9,36.9
50	429.9	430.9	433.1	433.3	433.1	431.7	430.7	430.6	40- 50	365.5	1244	52.2,52.2
60	340.2	338.3	337.2	340.2	338.7	339.7	338.5	337.4	50- 60	346.0	1590	66.8,66.8
70	241.5	240.7	240.5	242.2	241.1	241.2	241.5	240.7	60- 70	287.7	1878	78.8,78.8
80	143.1	143.1	143.6	143.6	143.7	143.2	142.0	142.9	70- 80	202.6	2080	87.3,87.3
90	71.23	71.61	72.48	72.34	71.43	70.64	69.70	69.88	80- 90	112.2	2192	92.1,92.1
100	50.97	52.09	52.89	53.15	51.69	50.65	49.29	49.12	90-100	63.63	2256	94.7,94.7
110	39.54	39.78	40.23	40.06	39.10	38.24	37.49	37.58	100-110	48.09	2304	96.8,96.8
120	24.24	27.38	27.29	27.51	23.47	26.20	25.52	25.63	110-120	32.45	2337	98.1,98.1
130	15.38	17.34	17.46	17.31	14.71	16.48	16.44	16.15	120-130	19.00	2356	98.9,98.9
140	10.37	10.74	10.87	10.79	9.639	10.05	10.08	9.943	130-140	10.25	2366	99.3,99.3
150	10.52	10.42	10.64	10.66	9.836	9.700	9.880	9.735	140-150	6.188	2372	99.6,99.6
160	11.75	11.58	11.82	11.75	11.37	10.95	11.40	11.15	150-160	4.992	2377	99.8,99.8
170	11.95	11.87	12.33	12.09	11.93	11.97	12.26	11.92	160-170	3.355	2380	100,100
180	11.23	11.14	11.26	11.08	11.25	11.15	11.27	11.09	170-180	1.108	2381	100,100
DEG	LUMINOUS INTENSITY:cd									UNIT:lm		

Conical surface Flux(90deg): 1061 lm

%lum = 44.6%

%lamp = 44.6%

Conical surface Flux(120deg): 1589.9 lm

%lum = 66.8%

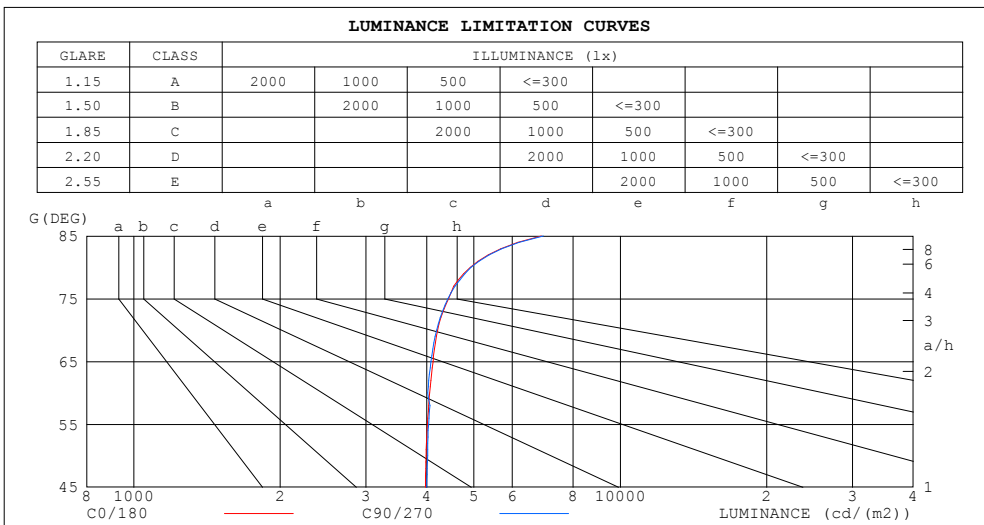
%lamp = 66.8%

C Range: 0 - 360DEG
 C Interval: 30.0DEG
 Test Speed: HIGH
 Temperature:25.3DEG
 Operators:admin
 Test Date:2022-03-16

□ Range: 0 - 180DEG
 □ Interval: 1.0DEG
 Test System:EVERFINE GO-2000B_V1 SYSTEM V2.00.411
 Humidity:65.0%
 Test Distance:8.780m [K=1.0000]
 Remarks:

LUMINANCE LIMITATION CURVES

Test:U:119.97V I:0.3749A P:40.467W PF:0.8985 Freq:60.00Hz Lamp Flux:2381.47x1 lm		
NAME: ASD lighting Corp	TYPE:	WEIGHT:
SPEC.:ASD-LFC-HN-20D42-AC-3500K	DIM.:	SERIAL No.:
MFR.: ASD lighting Corp	SUR.:0.43*0.39	Shielding Angle:



LUMINANCE cd/(m2)		
G (DEG)	C0/180	C90/270
85	6882	6942
80	4914	4931
75	4436	4419
70	4211	4193
65	4122	4083
60	4057	4021
55	4015	4035
50	3988	4017
45	3979	3999

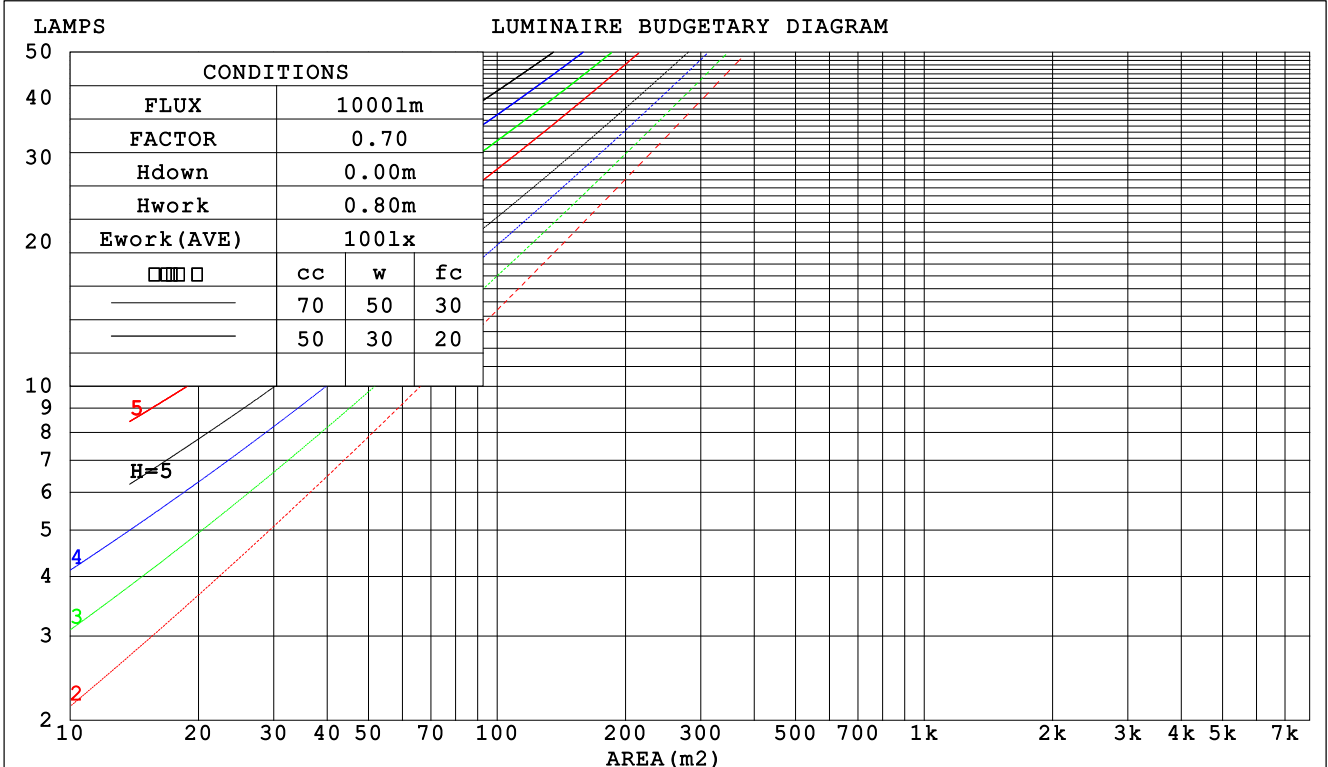
C Range: 0 - 360DEG
 C Interval: 30.0DEG
 Test Speed: HIGH
 Temperature:25.3DEG
 Operators:admin
 Test Date:2022-03-16

Range: 0 - 180DEG
 Interval: 1.0DEG
 Test System:EVERFINE GO-2000B_V1 SYSTEM V2.00.411
 Humidity:65.0%
 Test Distance:8.780m [K=1.0000]
 Remarks:

CU AND LUMINAIRE BUDGETARY ESTIMATE DIAGRAM

Test:U:119.97V I:0.3749A P:40.467W PF:0.8985 Freq:60.00Hz Lamp Flux:2381.47x1 lm		
NAME: ASD lighting Corp	TYPE:	WEIGHT:
SPEC.:ASD-LFC-HN-20D42-AC-3500K	DIM.:	SERIAL No.:
MFR.: ASD lighting Corp	SUR.:0.43*0.39	Shielding Angle:

□cc	80%			70%			50%			30%			10%			0
□w	50%	30%	10%	50%	30%	10%	50%	30%	10%	50%	30%	10%	50%	30%	10%	0
□fc	20%			20%			20%			20%			20%			0
RCR	RCR:Room Cavity Ratio						Coefficients of Utilization(CU)									
0.0	1.17	1.17	1.17	1.14	1.14	1.14	1.07	1.07	1.07	1.00	1.00	1.00	.95	.95	.95	.92
1.0	.00	.95	.91	.97	.92	.88	.91	.87	.84	.86	.83	.80	.81	.79	.76	.74
2.0	.86	.79	.73	.84	.77	.71	.79	.73	.68	.74	.70	.65	.70	.66	.63	.60
3.0	.75	.67	.60	.73	.65	.59	.69	.62	.56	.65	.59	.54	.61	.57	.53	.50
4.0	.66	.57	.50	.64	.56	.49	.61	.54	.48	.58	.51	.46	.54	.49	.45	.42
5.0	.59	.50	.43	.57	.49	.42	.54	.47	.41	.51	.45	.40	.49	.43	.39	.36
6.0	.53	.44	.37	.52	.43	.37	.49	.41	.36	.46	.40	.35	.44	.38	.34	.32
7.0	.48	.39	.33	.47	.38	.32	.44	.37	.31	.42	.36	.31	.40	.34	.30	.28
8.0	.44	.35	.29	.43	.34	.29	.41	.33	.28	.39	.32	.27	.37	.31	.27	.25
9.0	.40	.32	.26	.39	.31	.26	.37	.30	.25	.36	.29	.25	.34	.28	.24	.22
10.0	.37	.29	.23	.36	.28	.23	.34	.28	.23	.33	.27	.22	.32	.26	.22	.20



C Range: 0 - 360DEG
 C Interval: 30.0DEG
 Test Speed: HIGH
 Temperature:25.3DEG
 Operators:admin
 Test Date:2022-03-16

□ Range: 0 - 180DEG
 □ Interval: 1.0DEG
 Test System:EVERFINE GO-2000B_V1 SYSTEM V2.00.411
 Humidity:65.0%
 Test Distance:8.780m [K=1.0000]
 Remarks:

WEC AND CCEC

Test:U:119.97V I:0.3749A P:40.467W PF:0.8985 Freq:60.00Hz Lamp Flux:2381.47x1 lm		
NAME: ASD lighting Corp	TYPE:	WEIGHT:
SPEC.:ASD-LFC-HN-20D42-AC-3500K	DIM.:	SERIAL No.:
MFR.: ASD lighting Corp	SUR.:0.43*0.39	Shielding Angle:

<input type="checkbox"/> cc	80%	70%	50%	30%	10%	0
<input type="checkbox"/> w	50% 30% 10%	50% 30% 10%	50% 30% 10%	50% 30% 10%	50% 30% 10%	0
<input type="checkbox"/> fc	20%	20%	20%	20%	20%	0
RCR	RCR:Room Cavity Ratio		Wall Exitance Coefficients (WEC)			
0.0						
1.0	.349 .199 .063	.340 .194 .062	.322 .185 .059	.305 .176 .057	.290 .168 .054	
2.0	.314 .172 .053	.306 .168 .052	.290 .161 .050	.275 .154 .048	.261 .148 .047	
3.0	.284 .151 .045	.277 .148 .045	.262 .142 .043	.249 .136 .042	.237 .131 .041	
4.0	.259 .135 .040	.252 .132 .039	.239 .127 .038	.227 .122 .037	.216 .117 .036	
5.0	.237 .121 .035	.231 .119 .035	.219 .114 .034	.209 .110 .033	.199 .106 .032	
6.0	.219 .110 .031	.213 .108 .031	.203 .104 .030	.193 .100 .029	.184 .097 .029	
7.0	.202 .100 .028	.197 .098 .028	.188 .095 .027	.179 .092 .027	.171 .089 .026	
8.0	.188 .092 .026	.184 .091 .026	.175 .088 .025	.167 .085 .024	.159 .082 .024	
9.0	.176 .085 .024	.172 .084 .024	.164 .081 .023	.157 .078 .022	.150 .076 .022	
10.0	.165 .079 .022	.161 .078 .022	.154 .075 .021	.147 .073 .021	.141 .071 .020	

<input type="checkbox"/> cc	80%	70%	50%	30%	10%	0
<input type="checkbox"/> w	50% 30% 10%	50% 30% 10%	50% 30% 10%	50% 30% 10%	50% 30% 10%	0
<input type="checkbox"/> fc	20%	20%	20%	20%	20%	0
RCR	RCR:Room Cavity Ratio		Ceiling Cavity Exitance Coefficients (CCEC)			
0.0	.251 .251 .251	.214 .214 .214	.146 .146 .146	.084 .084 .084	.027 .027 .027	
1.0	.244 .217 .192	.209 .186 .165	.143 .128 .114	.082 .074 .067	.026 .024 .022	
2.0	.237 .193 .157	.203 .166 .135	.139 .115 .094	.080 .067 .055	.026 .022 .018	
3.0	.229 .176 .134	.196 .152 .116	.135 .106 .081	.078 .062 .048	.025 .020 .016	
4.0	.221 .163 .119	.190 .141 .103	.131 .098 .073	.076 .058 .043	.024 .019 .014	
5.0	.214 .153 .108	.184 .132 .094	.126 .093 .067	.073 .054 .039	.024 .018 .013	
6.0	.206 .145 .101	.177 .125 .088	.122 .088 .062	.071 .052 .037	.023 .017 .012	
7.0	.199 .138 .095	.171 .120 .083	.118 .084 .059	.069 .049 .035	.022 .016 .012	
8.0	.193 .132 .091	.166 .115 .079	.115 .081 .056	.067 .048 .034	.022 .016 .011	
9.0	.187 .128 .088	.161 .111 .077	.111 .078 .054	.065 .046 .032	.021 .015 .011	
10.0	.181 .123 .085	.156 .107 .074	.108 .075 .053	.063 .045 .031	.020 .015 .010	

C Range: 0 - 360DEG
 C Interval: 30.0DEG
 Test Speed: HIGH
 Temperature:25.3DEG
 Operators:admin
 Test Date:2022-03-16

Range: 0 - 180DEG
 Interval: 1.0DEG
 Test System:EVERFINE GO-2000B_V1 SYSTEM V2.00.411
 Humidity:65.0%
 Test Distance:8.780m [K=1.0000]
 Remarks:

UGR(Unified Glare Rating) Table

Test:U:119.97V I:0.3749A P:40.467W PF:0.8985 Freq:60.00Hz Lamp Flux:2381.47x1 lm										
NAME: ASD lighting Corp					TYPE:			WEIGHT:		
SPEC.:ASD-LFC-HN-20D42-AC-3500K					DIM.:			SERIAL No.:		
MFR.: ASD lighting Corp					SUR.:0.43*0.39			Shielding Angle:		
ceiling/cavity	0.7	0.7	0.5	0.5	0.3	0.7	0.7	0.5	0.5	0.3
walls	0.5	0.3	0.5	0.3	0.3	0.5	0.3	0.5	0.3	0.3
working plane	0.2	0.2	0.2	0.2	0.2	0.2	0.2	0.2	0.2	0.2
Room dimensions	Viewed crosswise					Viewed endwise				
x = 2H y = 2H	17.2	18.7	17.6	19.0	19.4	17.2	18.7	17.6	19.0	19.4
3H	19.1	20.5	19.5	20.8	21.2	19.1	20.5	19.5	20.8	21.2
4H	20.0	21.3	20.4	21.7	22.1	20.0	21.3	20.4	21.7	22.1
6H	20.8	22.0	21.3	22.5	22.9	20.8	22.0	21.3	22.5	22.9
8H	21.2	22.4	21.7	22.8	23.3	21.2	22.4	21.7	22.8	23.3
12H	21.6	22.8	22.1	23.2	23.7	21.6	22.8	22.1	23.2	23.7
4H 2H	17.9	19.2	18.3	19.6	20.0	17.9	19.2	18.3	19.6	20.0
3H	20.0	21.1	20.4	21.5	22.0	20.0	21.1	20.4	21.5	22.0
4H	21.0	22.1	21.5	22.5	23.0	21.0	22.1	21.5	22.5	23.0
6H	22.0	22.9	22.5	23.4	24.0	22.0	22.9	22.5	23.4	24.0
8H	22.5	23.4	23.0	23.9	24.4	22.5	23.4	23.0	23.9	24.4
12H	23.0	23.8	23.6	24.3	24.9	23.0	23.8	23.6	24.3	24.9
8H 4H	21.4	22.3	21.9	22.8	23.3	21.4	22.3	21.9	22.8	23.3
6H	22.6	23.4	23.2	23.9	24.5	22.6	23.4	23.2	23.9	24.5
8H	23.3	23.9	23.9	24.5	25.1	23.3	23.9	23.9	24.5	25.1
12H	24.0	24.5	24.6	25.1	25.8	24.0	24.5	24.6	25.1	25.8
12H 4H	21.5	22.3	22.0	22.8	23.4	21.5	22.3	22.0	22.8	23.4
6H	22.8	23.4	23.4	24.0	24.6	22.8	23.4	23.4	24.0	24.6
8H	23.5	24.1	24.1	24.6	25.3	23.5	24.1	24.1	24.6	25.3
Variations with the observer position at spacings:										
S = 1.0H	+ 0.1 / - 0.1					+ 0.1 / - 0.1				
1.5H	+ 0.2 / - 0.3					+ 0.2 / - 0.3				
2.0H	+ 0.1 / - 0.3					+ 0.2 / - 0.3				

CIE Pub.117, 2381 lm Total Lamp Luminous Flux Corrected (8log(F/F0) = 3.0)
 Area: 0.1677 m2

C Range: 0 - 360DEG
 C Interval: 30.0DEG
 Test Speed: HIGH
 Temperature:25.3DEG
 Operators:admin
 Test Date:2022-03-16

Range: 0 - 180DEG
 Interval: 1.0DEG
 Test System:EVERFINE GO-2000B_V1 SYSTEM V2.00.411
 Humidity:65.0%
 Test Distance:8.780m [K=1.0000]
 Remarks:

UTILIZATION FACTORS TABLE

Test:U:119.97V I:0.3749A P:40.467W PF:0.8985 Freq:60.00Hz Lamp Flux:2381.47x1 lm		
NAME: ASD lighting Corp	TYPE:	WEIGHT:
SPEC.:ASD-LFC-HN-20D42-AC-3500K	DIM.:	SERIAL No.:
MFR.: ASD lighting Corp	SUR.:0.43*0.39	Shielding Angle:

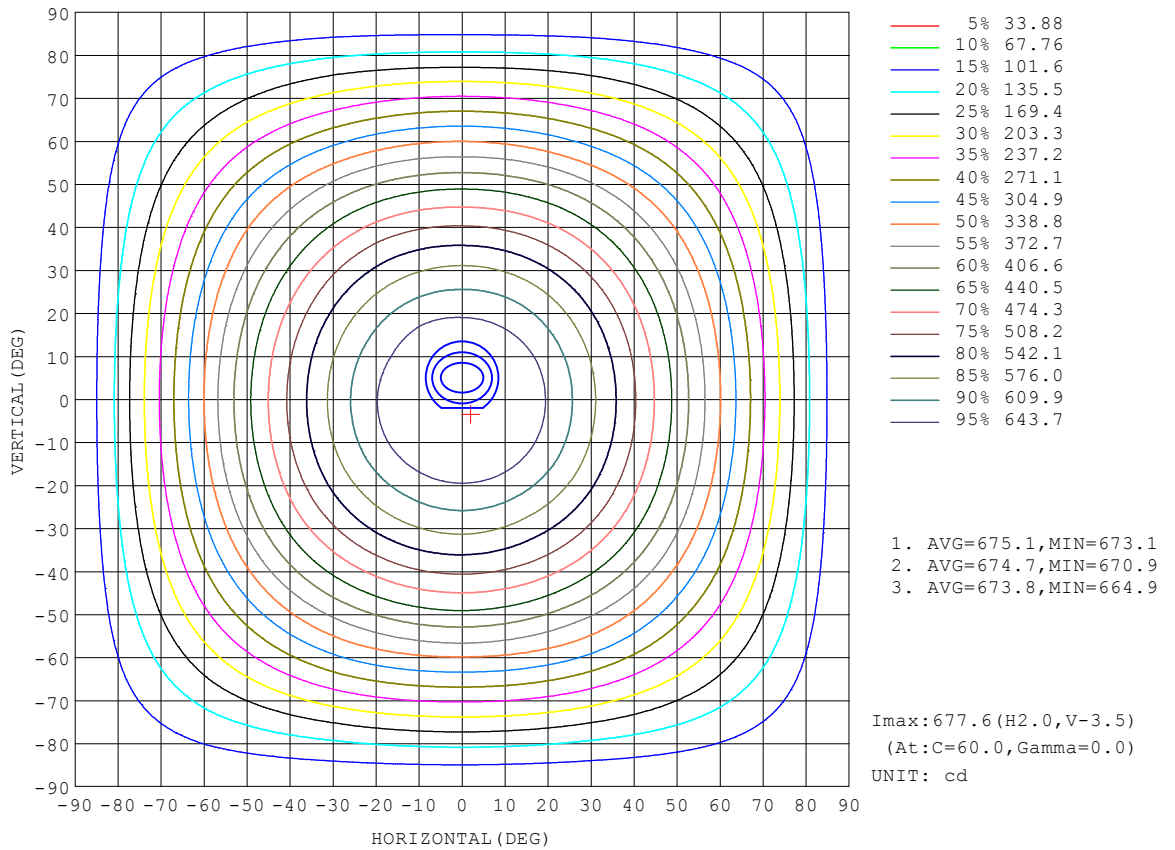
REFLECTANCE										
Ceiling	0.8	0.8	0.8	0.7	0.7	0.7	0.5	0.5	0.5	0
Walls	0.7	0.5	0.3	0.7	0.5	0.3	0.7	0.5	0.3	0
Working plane	0.2	0.2	0.2	0.2	0.2	0.2	0.2	0.2	0.2	0
ROOM INDEX	UTILIZATION FACTORS (PERCENT) $k(RI) \times RCR = 5$									
k = 0.60	53	41	34	52	40	33	50	40	33	27
0.80	62	50	42	61	50	42	59	48	42	34
1.00	71	58	51	69	58	50	66	59	49	42
1.25	78	66	58	76	65	57	72	63	56	48
1.50	83	72	64	80	70	63	77	68	61	53
2.00	90	80	72	87	78	71	83	75	69	60
2.50	94	85	78	91	83	77	86	80	74	64
3.00	97	89	83	95	87	81	89	83	78	68
4.00	102	95	89	99	93	88	93	88	84	73
5.00	105	99	94	101	96	92	95	91	88	76
ROOM INDEX	UF(total)									Direct
According to DIN EN 13032-2 2004			Suspended				SHRNOM = 1.25			

C Range: 0 - 360DEG
 C Interval: 30.0DEG
 Test Speed: HIGH
 Temperature:25.3DEG
 Operators:admin
 Test Date:2022-03-16

Range: 0 - 180DEG
 Interval: 1.0DEG
 Test System:EVERFINE GO-2000B_V1 SYSTEM V2.00.411
 Humidity:65.0%
 Test Distance:8.780m [K=1.0000]
 Remarks:

ISOCANDELA DIAGRAM

Test:U:119.97V I:0.3749A P:40.467W PF:0.8985 Freq:60.00Hz Lamp Flux:2381.47x1 lm		
NAME: ASD lighting Corp	TYPE:	WEIGHT:
SPEC.:ASD-LFC-HN-20D42-AC-3500K	DIM.:	SERIAL No.:
MFR.: ASD lighting Corp	SUR.:0.43*0.39	Shielding Angle:

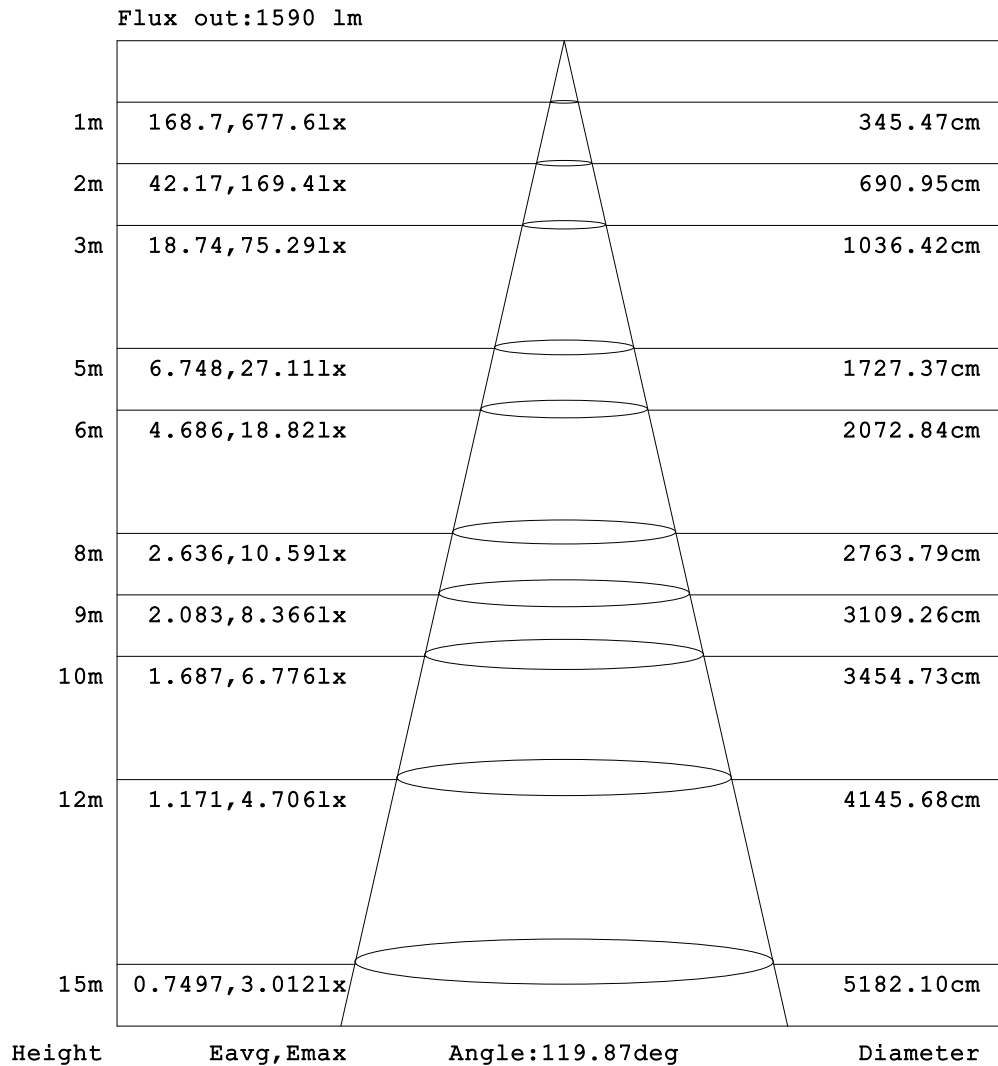


C Range: 0 - 360DEG
 C Interval: 30.0DEG
 Test Speed: HIGH
 Temperature:25.3DEG
 Operators:admin
 Test Date:2022-03-16

Range: 0 - 180DEG
 Interval: 1.0DEG
 Test System:EVERFINE GO-2000B_V1 SYSTEM V2.00.411
 Humidity:65.0%
 Test Distance:8.780m [K=1.0000]
 Remarks:

AAI Figure

Test:U:119.97V I:0.3749A P:40.467W PF:0.8985 Freq:60.00Hz Lamp Flux:2381.47x1 lm		
NAME: ASD lighting Corp	TYPE:	WEIGHT:
SPEC.:ASD-LFC-HN-20D42-AC-3500K	DIM.:	SERIAL No.:
MFR.: ASD lighting Corp	SUR.:0.43*0.39	Shielding Angle:



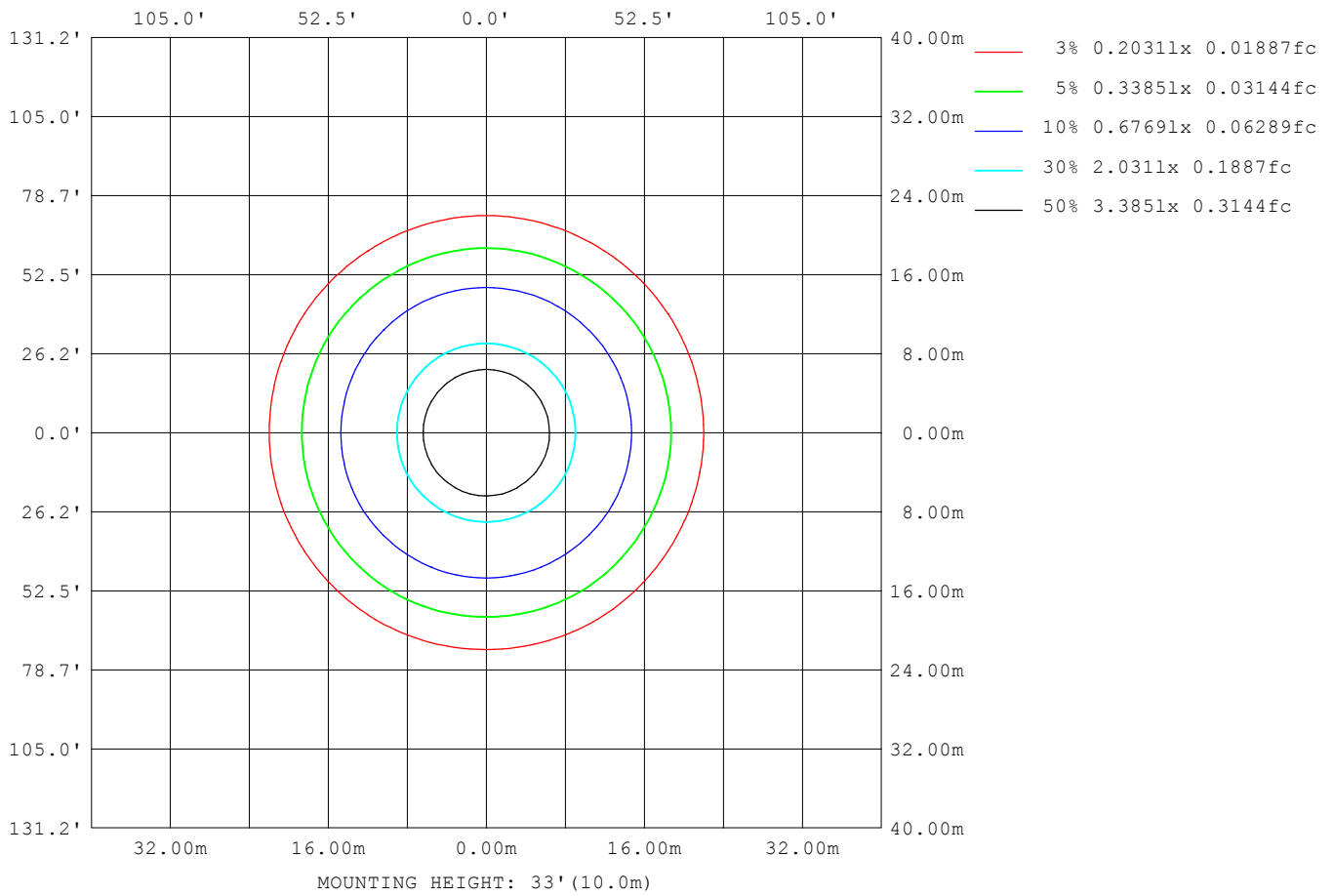
Note:The Curves indicate the illuminated area and the average illumination when the luminaire is at different distance.

C Range: 0 - 360DEG
 C Interval: 30.0DEG
 Test Speed: HIGH
 Temperature:25.3DEG
 Operators:admin
 Test Date:2022-03-16

Range: 0 - 180DEG
 Interval: 1.0DEG
 Test System:EVERFINE GO-2000B_V1 SYSTEM V2.00.411
 Humidity:65.0%
 Test Distance:8.780m [K=1.0000]
 Remarks:

ISOLUX DIAGRAM

Test:U:119.97V I:0.3749A P:40.467W PF:0.8985 Freq:60.00Hz Lamp Flux:2381.47x1 lm		
NAME: ASD lighting Corp	TYPE:	WEIGHT:
SPEC.:ASD-LFC-HN-20D42-AC-3500K	DIM.:	SERIAL No.:
MFR.: ASD lighting Corp	SUR.:0.43*0.39	Shielding Angle:



C Range: 0 - 360DEG
 C Interval: 30.0DEG
 Test Speed: HIGH
 Temperature:25.3DEG
 Operators:admin
 Test Date:2022-03-16

Range: 0 - 180DEG
 Interval: 1.0DEG
 Test System:EVERFINE GO-2000B_V1 SYSTEM V2.00.411
 Humidity:65.0%
 Test Distance:8.780m [K=1.0000]
 Remarks:

LED Avg.L Report

Test:U:119.97V I:0.3749A P:40.467W PF:0.8985 Freq:60.00Hz Lamp Flux:2381.47x1 lm		
NAME: ASD lighting Corp	TYPE:	WEIGHT:
SPEC.:ASD-LFC-HN-20D42-AC-3500K	DIM.:	SERIAL No.:
MFR.: ASD lighting Corp	SUR.:0.43*0.39	Shielding Angle:

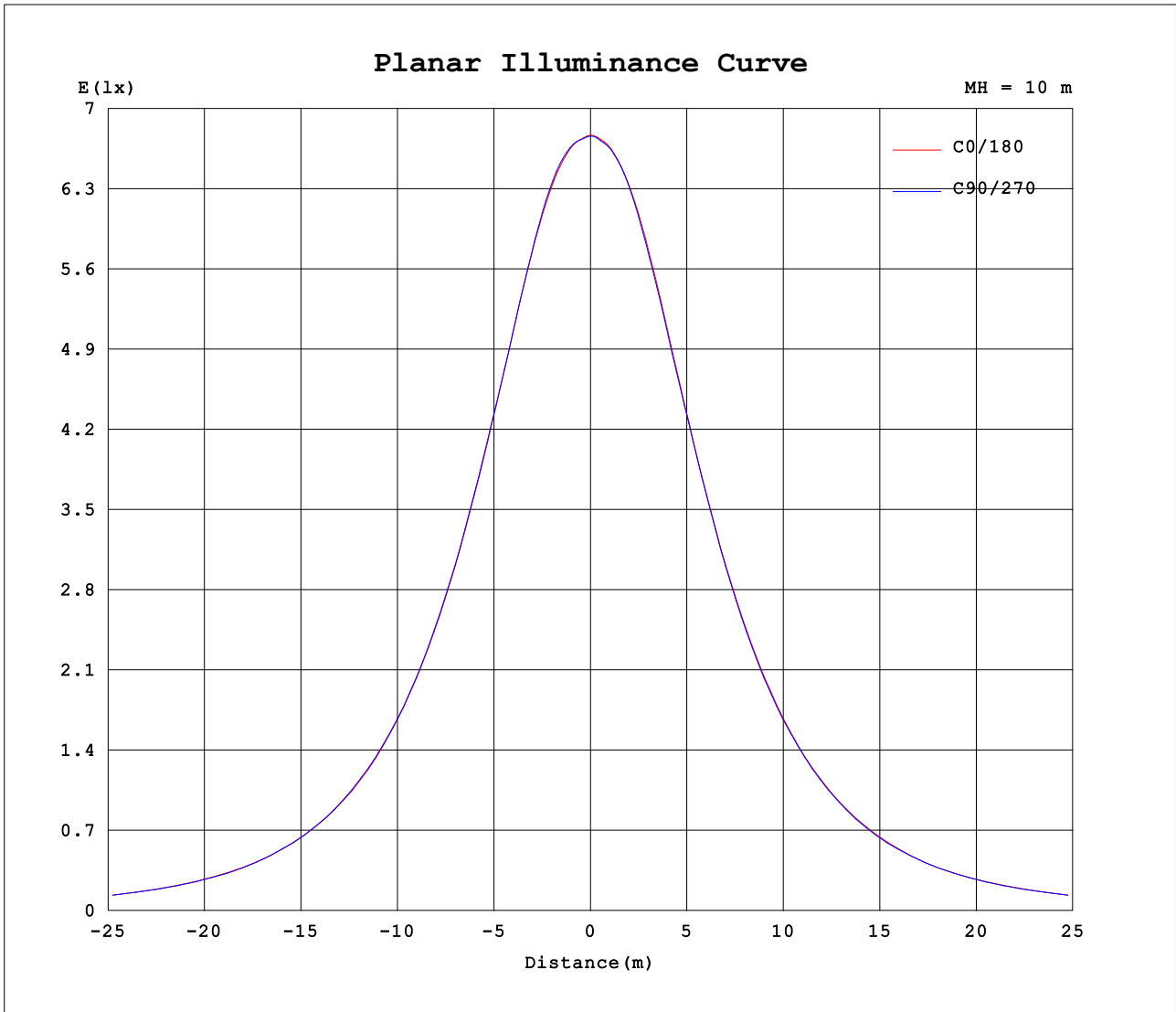
AvgL	cd/m2
L_0~180 (65) av	4116
L_0~180 (75) av	4431
L_0~180 (85) av	6906
L_90~270 (65) av	4090
L_90~270 (75) av	4424
L_90~270 (85) av	6880
L_45 (65) av	4103
L_45 (75) av	4426
L_45 (85) av	6885

Standard: GB/T 29293-2012

C Range: 0 - 360DEG
 C Interval: 30.0DEG
 Test Speed: HIGH
 Temperature:25.3DEG
 Operators:admin
 Test Date:2022-03-16

Range: 0 - 180DEG
 Interval: 1.0DEG
 Test System:EVERFINE GO-2000B_V1 SYSTEM V2.00.411
 Humidity:65.0%
 Test Distance:8.780m [K=1.0000]
 Remarks:

Planar Illuminance Curve



C Range: 0 - 360DEG
 C Interval: 30.0DEG
 Test Speed: HIGH
 Temperature:25.3DEG
 Operators:admin
 Test Date:2022-03-16

Range: 0 - 180DEG
 Interval: 1.0DEG
 Test System:EVERFINE GO-2000B_V1 SYSTEM V2.00.411
 Humidity:65.0%
 Test Distance:8.780m [K=1.0000]
 Remarks:

LUMINOUS DISTRIBUTION INTENSITY DATA

Test:U:119.97V I:0.3749A P:40.467W PF:0.8985 Freq:60.00Hz Lamp Flux:2381.47x1 lm		
NAME: ASD lighting Corp	TYPE:	WEIGHT:
SPEC.:ASD-LFC-HN-20D42-AC-3500K	DIM.:	SERIAL No.:
MFR.: ASD lighting Corp	SUR.:0.43*0.39	Shielding Angle:

Table--1

UNIT: cd

C (DEG) □ (DEG)	0	30	60	90	120	150	180	210	240	270	300	330							
0	677	677	678	676	676	677	677	677	678	676	676	677							
5	676	676	678	677	676	677	677	676	675	675	676	676							
10	673	673	673	675	675	674	673	673	671	673	673	672							
15	661	662	661	663	664	664	663	661	662	660	660	661							
20	641	642	642	641	641	643	642	640	642	639	640	641							
25	613	615	614	615	614	616	615	614	614	613	614	614							
30	583	584	583	585	585	586	585	584	584	583	584	583							
35	548	550	548	550	551	552	550	550	550	548	548	548							
40	511	513	513	513	514	515	514	513	514	510	511	511							
45	472	473	473	474	474	476	475	474	475	472	473	472							
50	430	431	430	433	432	434	433	431	432	431	431	430							
55	386	387	385	388	388	390	389	387	388	385	386	386							
60	340	337	340	337	341	339	339	341	338	338	336	339							
65	292	289	291	289	292	291	291	293	290	290	289	291							
70	242	240	241	240	243	242	241	242	240	242	240	241							
75	193	192	192	192	193	193	192	192	192	192	191	192							
80	143	144	142	144	143	145	144	142	144	142	144	142							
85	101	101	100	101	101	102	101	100	101	99.7	100	99.1							
90	71.2	71.6	71.6	72.5	72.0	72.7	71.4	70.5	70.8	69.7	70.2	69.6							
95	56.6	57.6	57.7	58.4	58.2	58.6	57.0	56.1	55.5	54.7	54.8	55.0							
100	51.0	51.8	52.3	52.9	53.1	53.2	51.7	50.9	50.4	49.3	49.0	49.2							
105	45.9	46.5	46.5	47.0	46.8	47.0	45.7	45.1	44.7	43.8	43.6	44.1							
110	39.5	39.9	39.6	40.2	39.8	40.3	39.1	38.6	37.9	37.5	37.4	37.8							
115	33.5	33.8	33.6	33.9	33.4	34.0	32.5	32.6	31.8	31.3	30.9	31.8							
120	24.2	27.7	27.1	27.3	27.3	27.8	23.5	26.4	26.0	25.5	25.2	26.1							
125	19.6	22.0	21.5	21.7	22.1	22.2	18.9	20.8	20.8	20.4	20.5	20.9							
130	15.4	17.3	17.4	17.5	17.5	17.1	14.7	16.4	16.6	16.4	16.3	16.0							
135	12.8	13.6	13.5	13.4	13.7	13.7	12.0	12.7	13.0	12.5	12.6	12.5							
140	10.4	10.7	10.7	10.9	10.8	10.7	9.64	9.90	10.2	10.1	9.97	9.91							
145	10.2	9.99	9.95	10.2	10.0	10.2	9.42	9.20	9.22	9.19	9.10	9.05							
150	10.5	10.3	10.5	10.6	10.6	10.7	9.84	9.56	9.84	9.88	9.75	9.72							
155	11.1	10.9	11.1	11.4	11.3	11.2	10.6	10.4	10.4	10.7	10.5	10.5							
160	11.8	11.6	11.5	11.8	11.8	11.7	11.4	10.9	11.0	11.4	11.2	11.1							
165	12.1	11.9	12.0	12.6	12.3	12.0	11.9	11.7	11.8	12.1	11.8	11.6							
170	11.9	11.9	11.9	12.3	12.1	12.0	11.9	11.8	12.1	12.3	12.0	11.8							
175	11.6	11.4	11.4	11.8	11.6	11.6	11.5	11.4	11.4	11.7	11.4	11.4							
180	11.2	11.1	11.2	11.3	11.1	11.1	11.2	11.1	11.2	11.3	11.1	11.1							

C Range: 0 - 360DEG
 C Interval: 30.0DEG
 Test Speed: HIGH
 Temperature:25.3DEG
 Operators:admin
 Test Date:2022-03-16

□ Range: 0 - 180DEG
 □ Interval: 1.0DEG
 Test System:EVERFINE GO-2000B_V1 SYSTEM V2.00.411
 Humidity:65.0%
 Test Distance:8.780m [K=1.0000]
 Remarks: