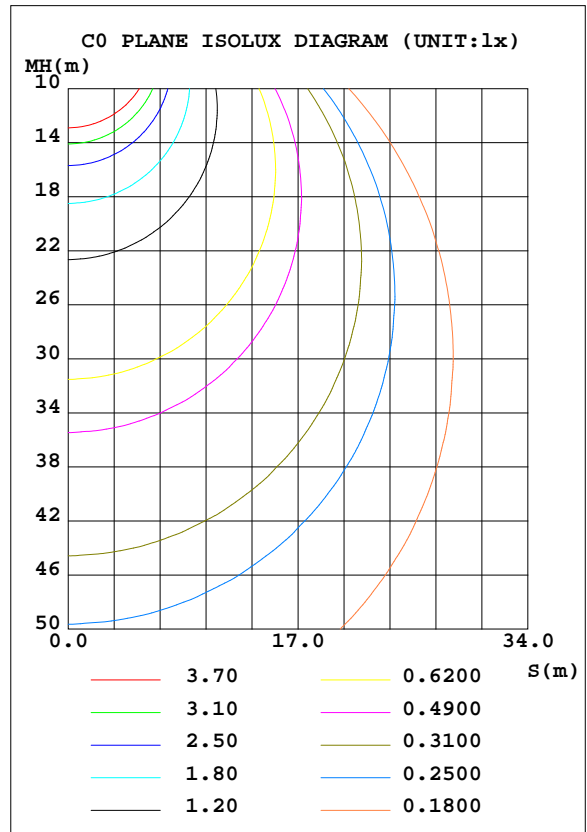
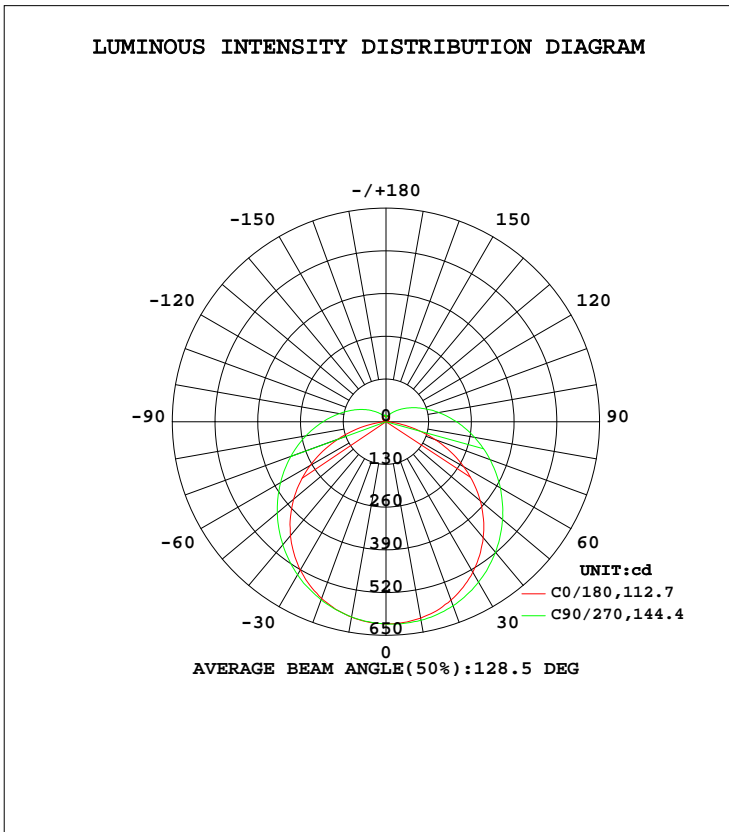


LUMINAIRE PHOTOMETRIC TEST REPORT

Test:U:120.1V I:0.2652A P:29.37W PF:0.9223 Lamp Flux:2477.06x1 lm		
NAME: ASD-LOFT-VF-36D30NK 5000K	TYPE:N/A	WEIGHT:N/A
SPEC.:N/A	DIM.: N/A	SERIAL No.:N/A
MFR.: ASD Lighting corp	SUR.:N/A	Shielding Angle:N/A

DATA OF LAMP		PHOTOMETRIC DATA Eff: 84.34 lm/W			
MODEL	ASD-LOFT-VF-36D30NK	I _{max} (cd)	617.8	S/MH(C0/180)	1.28
NOMINAL POWER(W)		LOR(%)	100.0	S/MH(C90/270)	1.37
RATED VOLTAGE(V)	120	TOTAL FLUX(lm)	2477.1	η UP, DN(C0-180)	6.1,42.5
NOMINAL FLUX(lm)	2477.06	CIE CLASS	SEMI-D.	η UP, DN(C180-360)	6.8,44.5
LAMPS INSIDE	1	η up(%)	12.9	CIBSE SHR NOM	1.50
TEST VOLTAGE(V)	120	η down(%)	87.1	CIBSE SHR MAX	1.50



C Range: 0 - 360DEG
 C Interval: 22.5DEG
 Test Speed: HIGH
 Temperature:24.3DEG
 Operators:Carl
 Test Date:2022-12-14

γ Range: 0 - 180DEG
 γ Interval: 1.0DEG
 Test System:EVERFINE GO-R5000_V2 SYSTEM V2.0.351
 Humidity:51%
 Test Distance:2.532m [K=1.0000]
 Remarks:

ZONAL FLUX DIAGRAM

ZONAL FLUX DIAGRAM:

γ	C0	C45	C90	C135	C180	C225	C270	C315	γ	Φ zone	Φ total	%lum, lamp
10	603.4	602.3	603.6	604.5	606.8	611.4	613.2	607.8	0- 10	58.34	58.34	2.36,2.36
20	572.3	572.5	576.7	577.0	577.7	589.9	596.1	583.8	10- 20	168.3	226.7	9.15,9.15
30	521.6	527.2	538.0	532.9	528.7	550.5	563.8	542.3	20- 30	259.0	485.7	19.6,19.6
40	452.5	468.3	488.7	475.0	460.3	495.9	518.4	485.5	30- 40	320.0	805.6	32.5,32.5
50	366.7	399.7	431.9	406.7	374.4	428.2	463.1	416.2	40- 50	345.2	1151	46.5,46.5
60	266.3	324.9	370.1	331.4	272.7	352.9	401.6	341.4	50- 60	333.5	1484	59.9,59.9
70	155.9	249.6	307.8	255.4	160.1	275.7	337.2	264.6	60- 70	289.6	1774	71.6,71.6
80	50.54	181.2	247.4	185.2	51.40	203.9	273.8	194.3	70- 80	224.8	1999	80.7,80.7
90	0.1594	124.7	191.8	127.2	0.1208	143.3	214.8	135.5	80- 90	158.0	2157	87.1,87.1
100	1.456	83.76	144.4	85.26	1.413	97.32	163.0	91.91	90-100	108.7	2265	91.5,91.5
110	5.455	56.03	105.3	56.81	5.558	66.71	119.3	63.08	100-110	74.37	2340	94.5,94.5
120	9.880	38.84	74.55	39.30	10.03	46.82	85.66	44.51	110-120	50.32	2390	96.5,96.5
130	13.98	28.43	51.35	28.68	14.03	34.10	59.99	32.79	120-130	33.59	2424	97.8,97.8
140	17.54	22.36	35.60	22.53	17.39	25.73	41.50	25.80	130-140	22.19	2446	98.7,98.7
150	20.55	19.08	25.53	19.20	20.08	19.03	28.92	22.14	140-150	14.66	2461	99.3,99.3
160	19.46	19.76	19.83	19.83	19.03	17.19	20.94	19.42	150-160	9.462	2470	99.7,99.7
170	15.83	20.96	21.44	16.92	15.73	15.55	18.62	20.17	160-170	5.366	2475	99.9,99.9
180	19.41	18.35	11.82	17.71	19.12	18.71	15.61	15.84	170-180	1.721	2477	100,100
DEG	LUMINOUS INTENSITY:cd									UNIT:lm		

Conical surface Flux(90deg): 977.44 lm

%lum = 39.5%
%lamp = 39.5%

Conical surface Flux(120deg): 1484.3 lm

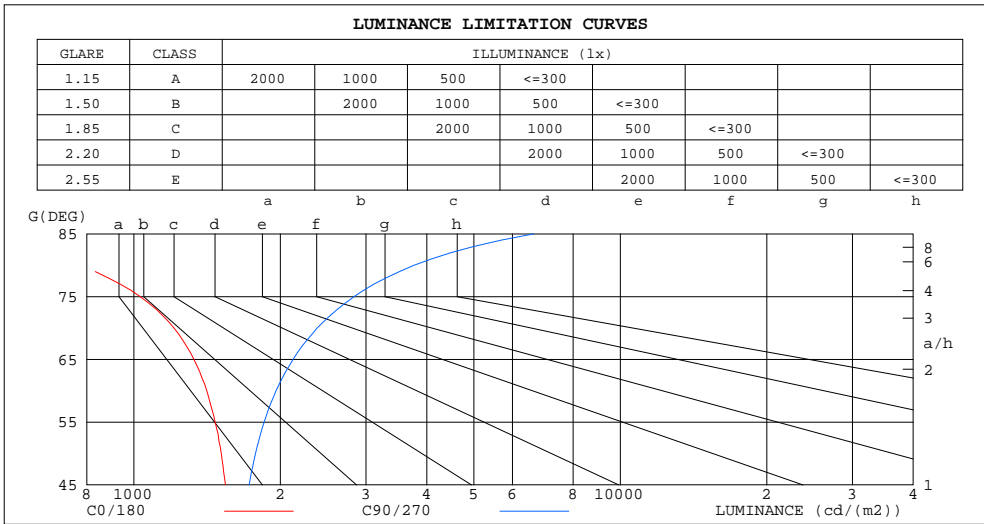
%lum = 59.9%
%lamp = 59.9%

C Range: 0 - 360DEG
C Interval: 22.5DEG
Test Speed: HIGH
Temperature:24.3DEG
Operators:Carl
Test Date:2022-12-14

γ Range: 0 - 180DEG
γ Interval: 1.0DEG
Test System:EVERFINE GO-R5000_V2 SYSTEM V2.0.351
Humidity:51%
Test Distance:2.532m [K=1.0000]
Remarks:

LUMINANCE LIMITATION CURVES

Test:U:120.1V I:0.2652A P:29.37W PF:0.9223 Lamp Flux:2477.06x1 lm		
NAME: LED Luminaires	TYPE:N/A	WEIGHT:N/A
SPEC.:N/A	DIM.: N/A	SERIAL No.:N/A
MFR.: RISING-SUN	SUR.:N/A	Shielding Angle:N/A



LUMINANCE cd/(m2)		
G (DEG)	C0/180	C90/270
85	373	6644
80	771	3770
75	1030	2836
70	1208	2382
65	1329	2125
60	1412	1959
55	1468	1853
50	1512	1778
45	1542	1726

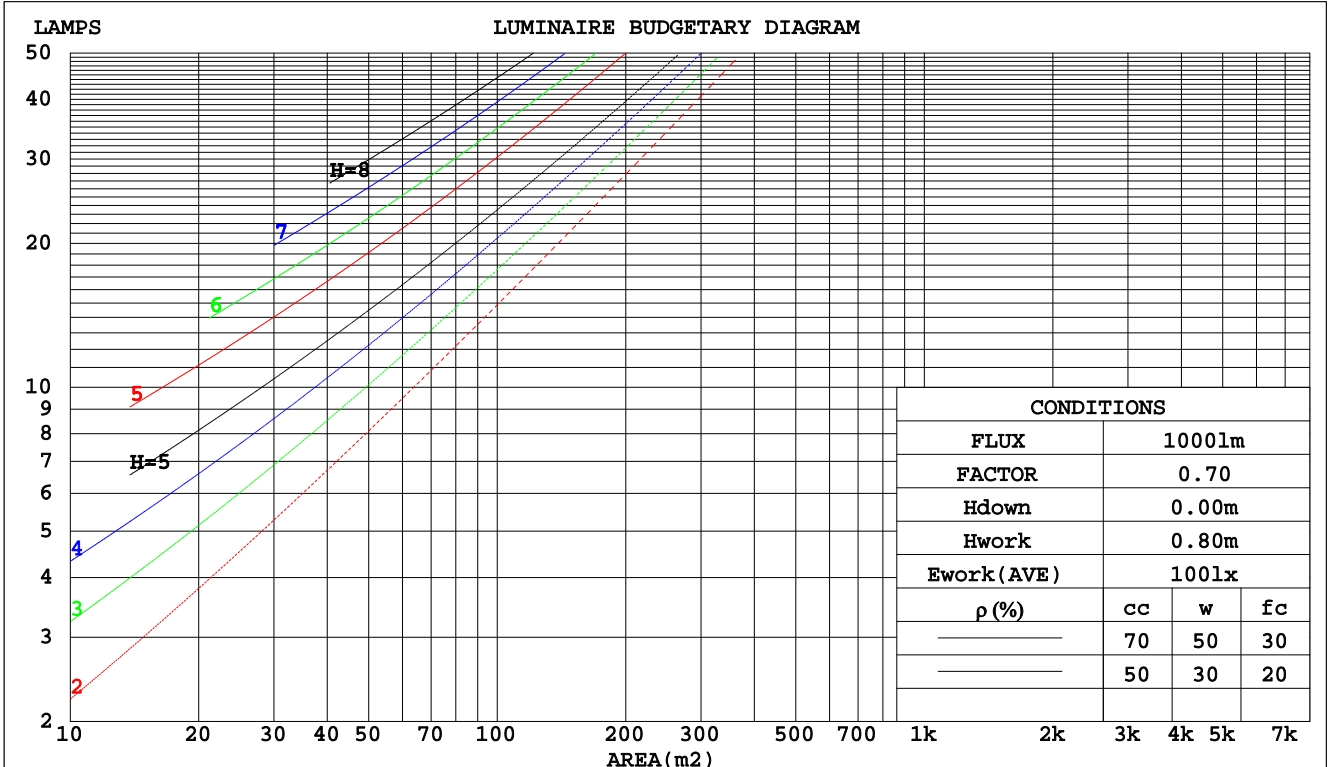
C Range: 0 - 360DEG
 C Interval: 22.5DEG
 Test Speed: HIGH
 Temperature: 24.3DEG
 Operators: Carl
 Test Date: 2022-12-14

γ Range: 0 - 180DEG
 γ Interval: 1.0DEG
 Test System: EVERFINE GO-R5000_V2 SYSTEM V2.0.351
 Humidity: 51%
 Test Distance: 2.532m [K=1.0000]
 Remarks:

CU AND LUMINAIRE BUDGETARY ESTIMATE DIAGRAM

Test:U:120.1V I:0.2652A P:29.37W PF:0.9223 Lamp Flux:2477.06x1 lm		
NAME: LED Luminaires	TYPE:N/A	WEIGHT:N/A
SPEC.:N/A	DIM.: N/A	SERIAL No.:N/A
MFR.: RISING-SUN	SUR.:N/A	Shielding Angle:N/A

pcc	80%			70%			50%			30%			10%			0
	50%	30%	10%	50%	30%	10%	50%	30%	10%	50%	30%	10%	50%	30%	10%	0
pw																0
pfc	20%			20%			20%			20%			20%			0
RCR	RCR:Room Cavity Ratio Coefficients of Utilization(CU)															
0.0	1.16	1.16	1.16	1.12	1.12	1.12	1.04	1.04	1.04	.97	.97	.97	.90	.90	.90	.87
1.0	.98	.92	.88	.94	.89	.85	.87	.84	.80	.81	.78	.75	.75	.73	.71	.68
2.0	.84	.76	.70	.81	.74	.68	.75	.69	.64	.70	.65	.61	.65	.61	.58	.55
3.0	.73	.64	.57	.70	.62	.56	.65	.59	.53	.61	.55	.50	.57	.52	.48	.45
4.0	.64	.55	.48	.62	.53	.47	.58	.50	.44	.54	.48	.42	.50	.45	.41	.38
5.0	.57	.48	.41	.55	.46	.40	.51	.44	.38	.48	.42	.36	.45	.39	.35	.32
6.0	.51	.42	.35	.49	.41	.34	.46	.39	.33	.43	.37	.32	.41	.35	.30	.28
7.0	.46	.37	.31	.45	.36	.30	.42	.34	.29	.39	.33	.28	.37	.31	.27	.25
8.0	.42	.33	.27	.41	.32	.27	.38	.31	.26	.36	.30	.25	.34	.28	.24	.22
9.0	.38	.30	.24	.37	.29	.24	.35	.28	.23	.33	.27	.22	.31	.26	.22	.20
10.0	.35	.27	.22	.34	.27	.22	.32	.26	.21	.31	.25	.20	.29	.23	.20	.18



C Range: 0 - 360DEG
 C Interval: 22.5DEG
 Test Speed: HIGH
 Temperature:24.3DEG
 Operators:Carl
 Test Date:2022-12-14

γ Range: 0 - 180DEG
 γ Interval: 1.0DEG
 Test System:EVERFINE GO-R5000_V2 SYSTEM V2.0.351
 Humidity:51%
 Test Distance:2.532m [K=1.0000]
 Remarks:

WEC AND CCEC

Test:U:120.1V I:0.2652A P:29.37W PF:0.9223 Lamp Flux:2477.06x1 lm		
NAME: LED Luminaires	TYPE:N/A	WEIGHT:N/A
SPEC.:N/A	DIM.: N/A	SERIAL No.:N/A
MFR.: RISING-SUN	SUR.:N/A	Shielding Angle:N/A

ρcc	80%			70%			50%			30%			10%			0
ρw	50%	30%	10%	50%	30%	10%	50%	30%	10%	50%	30%	10%	50%	30%	10%	0
ρfc	20%			20%			20%			20%			20%			0
RCR	RCR:Room Cavity Ratio						Wall Exitance Coefficients(WEC)									
0.0																
1.0	.371	.211	.067	.360	.205	.065	.339	.194	.062	.319	.184	.059	.302	.175	.056	
2.0	.326	.178	.055	.316	.174	.054	.297	.165	.051	.280	.157	.049	.264	.149	.047	
3.0	.292	.155	.046	.283	.151	.046	.266	.144	.044	.250	.137	.042	.235	.130	.040	
4.0	.264	.137	.040	.256	.134	.040	.240	.127	.038	.226	.121	.037	.213	.116	.035	
5.0	.240	.123	.035	.233	.120	.035	.219	.114	.034	.206	.109	.032	.194	.104	.031	
6.0	.221	.111	.032	.214	.108	.031	.202	.103	.030	.190	.099	.029	.179	.094	.028	
7.0	.204	.101	.029	.198	.099	.028	.187	.094	.027	.176	.090	.026	.166	.086	.025	
8.0	.190	.093	.026	.184	.091	.026	.174	.087	.025	.164	.083	.024	.154	.079	.023	
9.0	.177	.086	.024	.172	.084	.023	.162	.080	.023	.153	.077	.022	.145	.073	.021	
10.0	.166	.079	.022	.161	.078	.022	.152	.075	.021	.144	.071	.020	.136	.068	.020	

ρcc	80%			70%			50%			30%			10%			0
ρw	50%	30%	10%	50%	30%	10%	50%	30%	10%	50%	30%	10%	50%	30%	10%	0
ρfc	20%			20%			20%			20%			20%			0
RCR	RCR:Room Cavity Ratio						Ceiling Cavity Exitance Coefficients(CCEC)									
0.0	.289	.289	.289	.247	.247	.247	.169	.169	.169	.097	.097	.097	.031	.031	.031	
1.0	.284	.255	.229	.243	.219	.197	.166	.151	.136	.096	.087	.079	.031	.028	.026	
2.0	.277	.232	.194	.237	.199	.168	.162	.138	.117	.094	.080	.069	.030	.026	.022	
3.0	.269	.215	.172	.231	.185	.149	.158	.129	.104	.092	.075	.062	.029	.024	.020	
4.0	.261	.202	.157	.224	.175	.137	.154	.122	.096	.089	.071	.057	.029	.023	.019	
5.0	.254	.192	.147	.218	.166	.128	.150	.116	.090	.087	.068	.054	.028	.022	.018	
6.0	.246	.184	.140	.212	.160	.122	.146	.112	.086	.085	.066	.051	.027	.021	.017	
7.0	.239	.178	.134	.206	.154	.117	.142	.108	.083	.083	.064	.049	.027	.021	.016	
8.0	.233	.172	.130	.200	.149	.114	.139	.105	.081	.081	.062	.048	.026	.020	.016	
9.0	.226	.167	.127	.195	.145	.111	.135	.102	.079	.079	.060	.047	.025	.020	.016	
10.0	.221	.163	.125	.190	.141	.109	.132	.100	.077	.077	.059	.046	.025	.019	.015	

C Range: 0 - 360DEG
 C Interval: 22.5DEG
 Test Speed: HIGH
 Temperature:24.3DEG
 Operators:Carl
 Test Date:2022-12-14

γ Range: 0 - 180DEG
 γ Interval: 1.0DEG
 Test System:EVERFINE GO-R5000_V2 SYSTEM V2.0.351
 Humidity:51%
 Test Distance:2.532m [K=1.0000]
 Remarks:

UGR(Unified Glare Rating) Table

Test:U:120.1V I:0.2652A P:29.37W PF:0.9223 Lamp Flux:2477.06x1 lm										
NAME: LED Luminaires					TYPE:N/A			WEIGHT:N/A		
SPEC.:N/A					DIM.: N/A			SERIAL No.:N/A		
MFR.: RISING-SUN					SUR.:N/A			Shielding Angle:N/A		
ceiling/cavity	0.7	0.7	0.5	0.5	0.3	0.7	0.7	0.5	0.5	0.3
walls	0.5	0.3	0.5	0.3	0.3	0.5	0.3	0.5	0.3	0.3
working plane	0.2	0.2	0.2	0.2	0.2	0.2	0.2	0.2	0.2	0.2
Room dimensions	Viewed crosswise					Viewed endwise				
x = 2H y = 2H	13.0	14.5	13.5	14.9	15.4	14.4	15.8	14.8	16.2	16.7
3H	14.5	15.8	15.0	16.3	16.8	16.8	18.1	17.3	18.6	19.1
4H	15.0	16.3	15.5	16.8	17.3	18.1	19.4	18.6	19.8	20.4
6H	15.3	16.5	15.9	17.0	17.6	19.6	20.7	20.1	21.2	21.8
8H	15.4	16.5	15.9	17.1	17.6	20.4	21.5	20.9	22.0	22.6
12H	15.4	16.5	15.9	17.0	17.6	21.3	22.4	21.8	22.9	23.5
4H 2H	14.0	15.2	14.5	15.7	16.2	14.9	16.2	15.4	16.7	17.2
3H	15.7	16.8	16.2	17.3	17.9	17.6	18.7	18.1	19.2	19.8
4H	16.4	17.4	16.9	17.9	18.5	19.1	20.1	19.7	20.7	21.3
6H	16.9	17.8	17.5	18.3	19.0	20.8	21.7	21.4	22.3	22.9
8H	17.0	17.9	17.6	18.4	19.1	21.7	22.5	22.3	23.1	23.8
12H	17.1	17.9	17.7	18.5	19.1	22.8	23.5	23.4	24.1	24.8
8H 4H	17.2	18.0	17.8	18.6	19.3	19.4	20.3	20.0	20.9	21.5
6H	18.1	18.8	18.7	19.4	20.1	21.4	22.1	22.0	22.7	23.4
8H	18.4	19.0	19.0	19.7	20.4	22.5	23.2	23.2	23.8	24.5
12H	18.6	19.2	19.3	19.8	20.6	23.9	24.4	24.5	25.1	25.8
12H 4H	17.5	18.2	18.1	18.8	19.5	19.5	20.2	20.1	20.8	21.5
6H	18.5	19.2	19.2	19.8	20.5	21.5	22.2	22.2	22.8	23.5
8H	19.0	19.6	19.7	20.2	21.0	22.8	23.3	23.4	24.0	24.7
Variations with the observer position at spacings:										
S = 1.0H	+ 0.1 / - 0.2					+ 0.1 / - 0.1				
1.5H	+ 0.2 / - 0.3					+ 0.2 / - 0.3				
2.0H	+ 0.2 / - 0.4					+ 0.2 / - 0.3				

CIE Pub.117 Corrected 2477 lm Total Lamp Luminous Flux.(8log(F/F0) = 3.2)

C Range: 0 - 360DEG
 C Interval: 22.5DEG
 Test Speed: HIGH
 Temperature:24.3DEG
 Operators:Carl
 Test Date:2022-12-14

γ Range: 0 - 180DEG
 γ Interval: 1.0DEG
 Test System:EVERFINE GO-R5000_V2 SYSTEM V2.0.351
 Humidity:51%
 Test Distance:2.532m [K=1.0000]
 Remarks:

UTILIZATION FACTORS TABLE

Test:U:120.1V I:0.2652A P:29.37W PF:0.9223 Lamp Flux:2477.06x1 lm		
NAME: LED Luminaires	TYPE:N/A	WEIGHT:N/A
SPEC.:N/A	DIM.: N/A	SERIAL No.:N/A
MFR.: RISING-SUN	SUR.:N/A	Shielding Angle:N/A

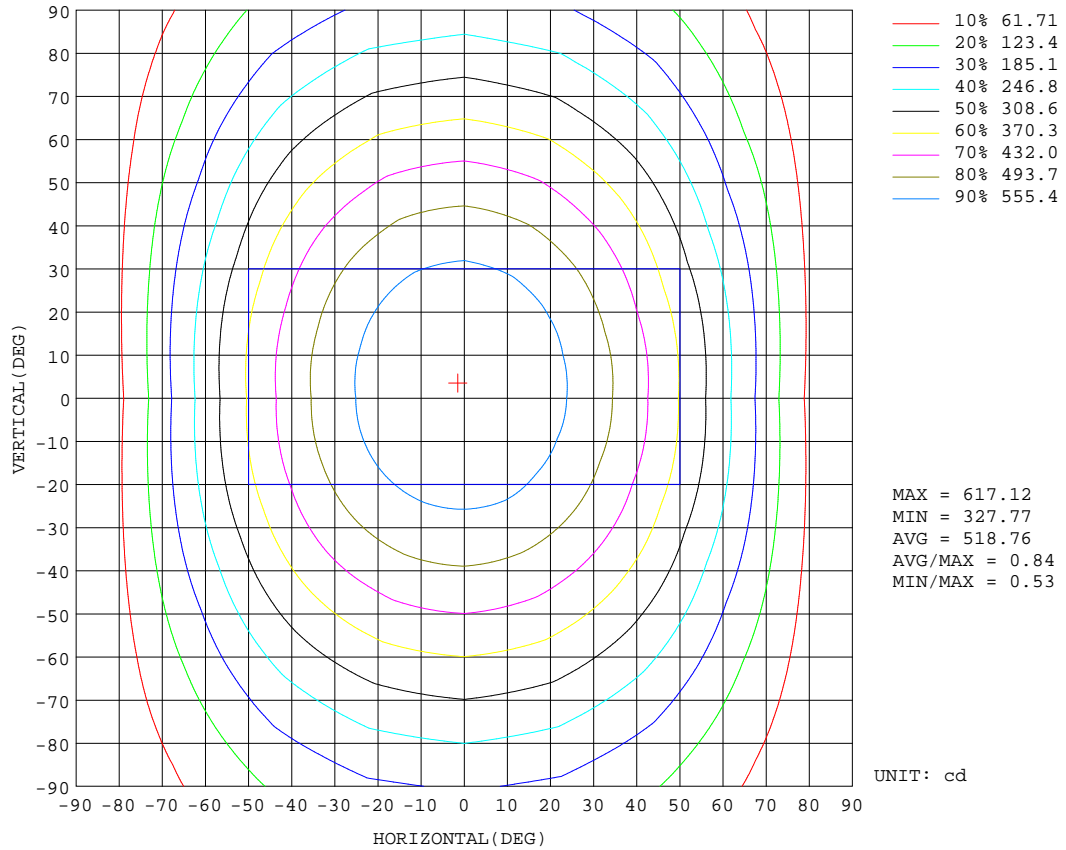
REFLECTANCE										
Ceiling	0.8	0.8	0.8	0.7	0.7	0.7	0.5	0.5	0.5	0
Walls	0.7	0.5	0.3	0.7	0.5	0.3	0.7	0.5	0.3	0
Working plane	0.2	0.2	0.2	0.2	0.2	0.2	0.2	0.2	0.2	0
ROOM INDEX	UTILIZATION FACTORS(PERCENT) $k(RI) \times RCR = 5$									
k = 0.60	50	38	31	49	38	30	47	37	30	23
0.80	60	47	39	58	46	39	56	45	38	30
1.00	67	55	47	66	54	46	63	55	45	37
1.25	74	62	54	72	61	53	68	59	52	43
1.50	79	68	59	77	66	59	73	64	57	47
2.00	87	76	68	84	74	67	79	71	65	54
2.50	91	81	74	88	79	72	82	75	69	58
3.00	95	86	79	91	84	77	86	79	74	62
4.00	99	92	86	96	89	83	89	84	79	66
5.00	102	96	90	98	93	88	92	87	83	70
ROOM INDEX	UF(total)									Direct
According to DIN EN 13032-2 2004			Suspended				SHRNOM = 1.25			

C Range: 0 - 360DEG
 C Interval: 22.5DEG
 Test Speed: HIGH
 Temperature:24.3DEG
 Operators:Carl
 Test Date:2022-12-14

γ Range: 0 - 180DEG
 γ Interval: 1.0DEG
 Test System:EVERFINE GO-R5000_V2 SYSTEM V2.0.351
 Humidity:51%
 Test Distance:2.532m [K=1.0000]
 Remarks:

ISOCANDELA DIAGRAM

Test:U:120.1V I:0.2652A P:29.37W PF:0.9223 Lamp Flux:2477.06x1 lm		
NAME: LED Luminaires	TYPE:N/A	WEIGHT:N/A
SPEC.:N/A	DIM.: N/A	SERIAL No.:N/A
MFR.: RISING-SUN	SUR.:N/A	Shielding Angle:N/A

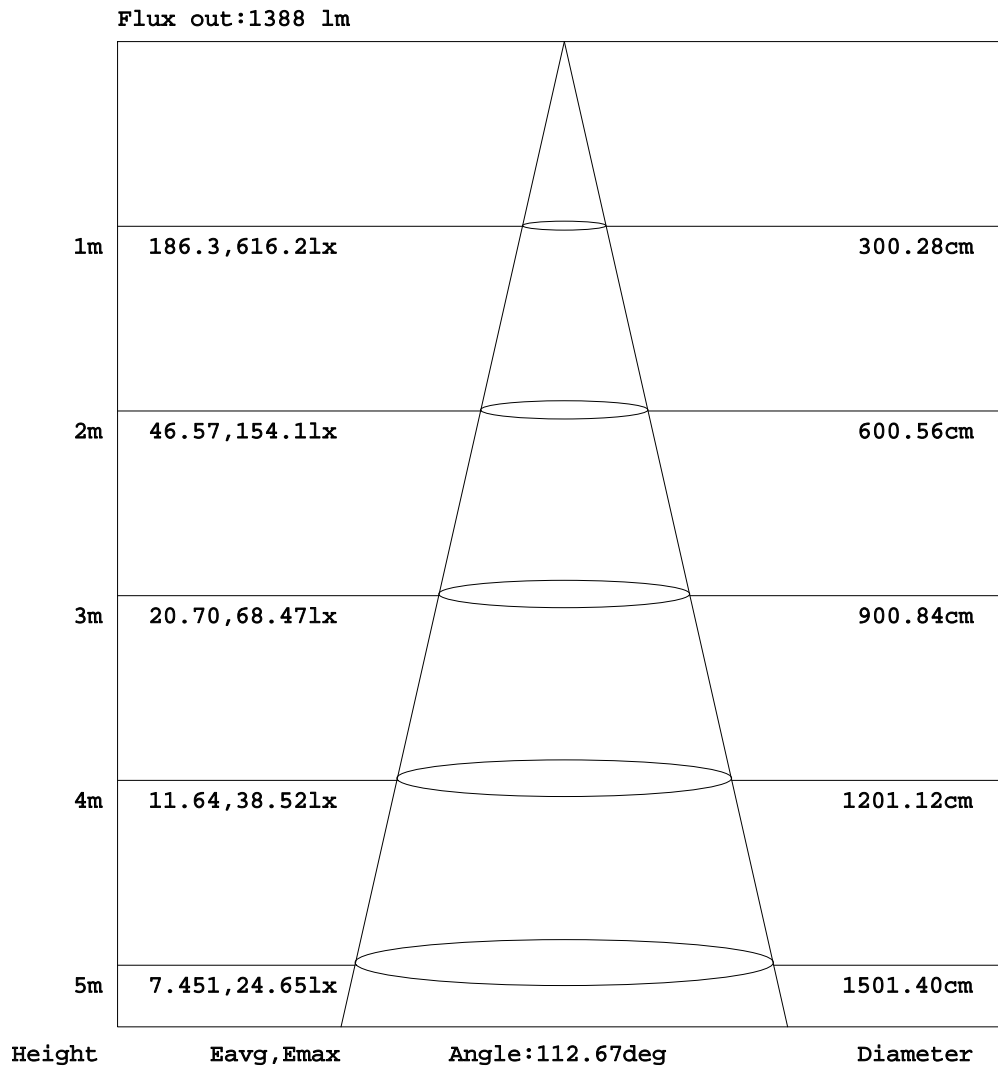


C Range: 0 - 360DEG
 C Interval: 22.5DEG
 Test Speed: HIGH
 Temperature:24.3DEG
 Operators:Carl
 Test Date:2022-12-14

γ Range: 0 - 180DEG
 γ Interval: 1.0DEG
 Test System:EVERFINE GO-R5000_V2 SYSTEM V2.0.351
 Humidity:51%
 Test Distance:2.532m [K=1.0000]
 Remarks:

AAI Figure

Test:U:120.1V I:0.2652A P:29.37W PF:0.9223 Lamp Flux:2477.06x1 lm		
NAME: LED Luminaires	TYPE:N/A	WEIGHT:N/A
SPEC.:N/A	DIM.: N/A	SERIAL No.:N/A
MFR.: RISING-SUN	SUR.:N/A	Shielding Angle:N/A



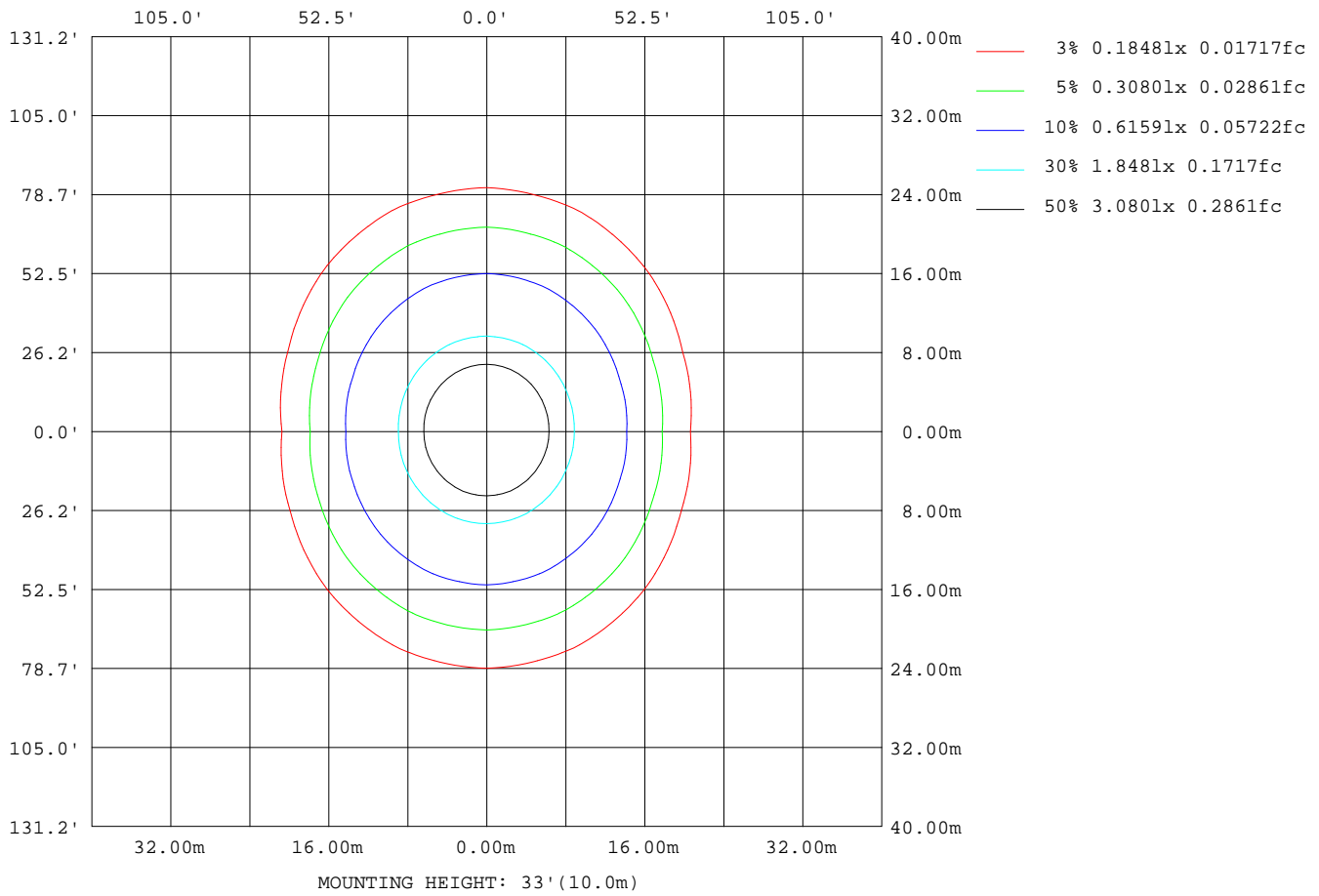
Note: The Curves indicate the illuminated area and the average illumination when the luminaire is at different distance.

C Range: 0 - 360DEG
 C Interval: 22.5DEG
 Test Speed: HIGH
 Temperature: 24.3DEG
 Operators: Carl
 Test Date: 2022-12-14

γ Range: 0 - 180DEG
 γ Interval: 1.0DEG
 Test System: EVERFINE GO-R5000_V2 SYSTEM V2.0.351
 Humidity: 51%
 Test Distance: 2.532m [K=1.0000]
 Remarks:

ISOLUX DIAGRAM

Test:U:120.1V I:0.2652A P:29.37W PF:0.9223 Lamp Flux:2477.06x1 lm		
NAME: LED Luminaires	TYPE:N/A	WEIGHT:N/A
SPEC.:N/A	DIM.: N/A	SERIAL No.:N/A
MFR.: RISING-SUN	SUR.:N/A	Shielding Angle:N/A



C Range: 0 - 360DEG
 C Interval: 22.5DEG
 Test Speed: HIGH
 Temperature:24.3DEG
 Operators:Carl
 Test Date:2022-12-14

γ Range: 0 - 180DEG
 γ Interval: 1.0DEG
 Test System:EVERFINE GO-R5000_V2 SYSTEM V2.0.351
 Humidity:51%
 Test Distance:2.532m [K=1.0000]
 Remarks:

LED Avg.L Report

Test:U:120.1V I:0.2652A P:29.37W PF:0.9223 Lamp Flux:2477.06x1 lm		
NAME: LED Luminaires	TYPE:N/A	WEIGHT:N/A
SPEC.:N/A	DIM.: N/A	SERIAL No.:N/A
MFR.: RISING-SUN	SUR.:N/A	Shielding Angle:N/A

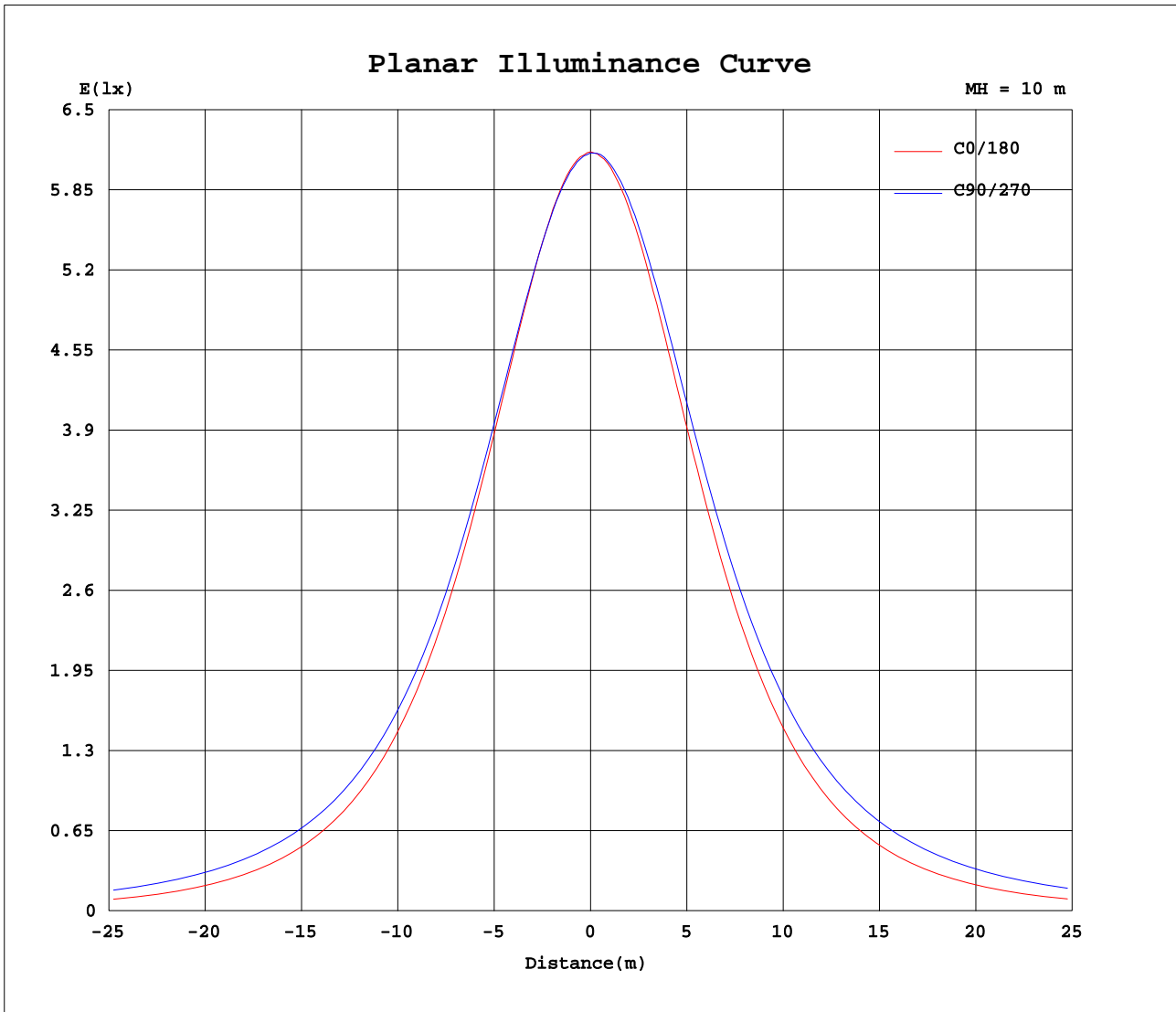
AvgL	cd/m2
L_0~180(65)av	1345
L_0~180(75)av	1041
L_0~180(85)av	397
L_90~270(65)av	2220
L_90~270(75)av	2979
L_90~270(85)av	7021
L_45(65)av	1875
L_45(75)av	2304
L_45(85)av	4866

Standard: GB/T 29293-2012

C Range: 0 - 360DEG
 C Interval: 22.5DEG
 Test Speed: HIGH
 Temperature:24.3DEG
 Operators:Carl
 Test Date:2022-12-14

γ Range: 0 - 180DEG
 γ Interval: 1.0DEG
 Test System:EVERFINE GO-R5000_V2 SYSTEM V2.0.351
 Humidity:51%
 Test Distance:2.532m [K=1.0000]
 Remarks:

Planar Illuminance Curve



C Range: 0 - 360DEG
 C Interval: 22.5DEG
 Test Speed: HIGH
 Temperature: 24.3DEG
 Operators: Carl
 Test Date: 2022-12-14

γ Range: 0 - 180DEG
 γ Interval: 1.0DEG
 Test System: EVERFINE GO-R5000_V2 SYSTEM V2.0.351
 Humidity: 51%
 Test Distance: 2.532m [K=1.0000]
 Remarks:

LUMINOUS DISTRIBUTION INTENSITY DATA

Test:U:120.1V I:0.2652A P:29.37W PF:0.9223 Lamp Flux:2477.06x1 lm		
NAME: LED Luminaires	TYPE:N/A	WEIGHT:N/A
SPEC.:N/A	DIM.: N/A	SERIAL No.:N/A
MFR.: RISING-SUN	SUR.:N/A	Shielding Angle:N/A

Table--1

UNIT: cd

C(DEG) γ (DEG)	0	22.5	45	67.5	90	112.5	135	157.5	180	202.5	225	247.5	270	292.5	315	337.5			
0	615	615	615	615	615	615	615	615	615	615	615	615	615	615	615	615			
5	612	611	612	612	611	612	613	613	613	615	616	618	616	616	614	614			
10	603	603	602	603	604	604	605	605	607	609	611	614	613	611	608	606			
15	591	590	590	592	591	593	593	594	595	599	603	608	607	604	598	593			
20	572	571	572	576	577	578	577	577	578	584	590	596	596	591	584	575			
25	549	548	552	558	559	559	557	556	556	563	573	582	581	576	566	554			
30	522	521	527	535	538	538	533	529	529	538	551	561	564	557	542	528			
35	489	490	500	511	514	513	506	499	497	509	525	540	542	534	515	498			
40	453	455	468	483	489	485	475	465	460	475	496	514	518	508	485	462			
45	412	416	435	454	461	456	442	427	420	437	464	486	492	479	453	424			
50	367	375	400	423	432	426	407	385	374	395	428	455	463	449	416	382			
55	318	331	363	391	402	394	369	340	326	351	391	424	432	417	380	338			
60	266	285	325	358	370	361	331	294	273	304	353	390	402	383	341	291			
65	212	238	287	325	339	328	293	246	217	256	314	357	369	350	303	243			
70	156	191	250	292	308	295	255	199	160	208	276	323	337	316	265	196			
75	101	148	215	261	277	263	219	153	103	162	239	290	305	283	228	152			
80	50.5	109	181	230	247	232	185	113	51.4	121	204	258	274	252	194	111			
85	12.3	76.1	151	201	219	203	154	78.8	13.8	86.4	172	227	243	221	163	78.6			
90	0.16	51.7	125	174	192	176	127	53.7	0.12	60.4	143	198	215	193	136	54.2			
95	0.27	35.5	102	150	167	152	104	36.2	0.26	42.5	118	171	188	167	111	38.0			
100	1.46	25.7	83.8	128	144	129	85.3	26.0	1.41	31.3	97.3	147	163	143	91.9	28.0			
105	3.32	20.0	68.6	109	124	110	69.7	20.1	3.34	24.6	80.4	125	140	121	75.9	22.2			
110	5.46	16.9	56.0	91.9	105	92.6	56.8	17.0	5.56	20.7	66.7	106	119	103	63.1	19.0			
115	7.69	15.2	46.4	77.1	88.9	77.7	47.0	15.3	7.83	18.5	55.6	89.5	101	87.1	52.7	17.2			
120	9.88	14.4	38.8	64.4	74.5	64.9	39.3	14.5	10.0	17.2	46.8	75.4	85.7	73.4	44.5	16.1			
125	11.9	14.0	33.0	53.5	62.2	53.8	33.3	14.1	12.1	16.5	39.7	63.1	71.9	61.6	37.9	15.6			
130	14.0	14.0	28.4	44.6	51.4	44.8	28.7	14.1	14.0	16.0	34.1	52.8	60.0	51.7	32.8	15.4			
135	15.8	14.1	24.9	37.4	42.7	37.5	25.1	14.2	15.8	15.6	29.5	44.1	49.9	43.5	28.8	15.4			
140	17.5	15.0	22.4	31.6	35.6	31.7	22.5	15.0	17.4	15.3	25.7	36.9	41.5	36.8	25.8	15.5			
145	19.2	16.2	20.5	27.1	29.9	27.1	20.6	16.6	18.8	15.7	22.4	30.6	34.6	31.6	23.7	15.9			
150	20.5	17.7	19.1	23.6	25.5	23.7	19.2	17.5	20.1	17.1	19.0	25.6	28.9	27.4	22.1	16.9			
155	20.6	19.3	18.8	20.9	22.2	21.0	18.8	18.9	20.1	17.8	17.7	21.8	24.4	24.0	20.8	18.0			
160	19.5	19.7	19.8	19.7	19.8	19.7	19.8	18.7	19.0	18.4	17.2	18.7	20.9	21.1	19.4	18.9			
165	17.7	19.8	21.1	20.5	20.3	20.5	18.2	17.3	17.4	17.2	16.2	18.0	19.4	19.4	19.5	19.7			
170	15.8	20.1	21.0	21.7	21.4	19.4	16.9	16.3	15.7	15.6	15.6	16.1	18.6	20.0	20.2	19.8			
175	17.3	18.3	20.6	20.8	18.0	16.4	16.9	17.8	17.4	17.4	17.0	16.1	15.3	17.8	19.7	19.7			
180	19.4	19.1	18.4	15.6	11.8	16.5	17.7	18.9	19.1	19.2	18.7	18.0	15.6	13.2	15.8	18.0			

C Range: 0 - 360DEG
 C Interval: 22.5DEG
 Test Speed: HIGH
 Temperature:24.3DEG
 Operators:Carl
 Test Date:2022-12-14

γ Range: 0 - 180DEG
 γ Interval: 1.0DEG
 Test System:EVERFINE GO-R5000_V2 SYSTEM V2.0.351
 Humidity:51%
 Test Distance:2.532m [K=1.0000]
 Remarks: