



# LED TROFFER LIGHT

► **DESIGN** - LED TROFFER LIGHT comes with a durable iron commercial grade housing resistant to rust and impact, anti-glare PC lens, and driver with circuit overload, short circuit, and low-voltage protection, making it both safe and reliable. It is designed to operate on 120-277V circuits.

► **COLOR AND POWER SELECTABLE** - You can choose either a 3,500K neutral white, 4,000K cool white or 5,000K daylight color temperature and change the power with a simple switch.

► **BATTERY BACK-UP** - The built-in battery back-up provide 90 minutes of power in case of emergency.

► **INSTALLATION** - Quick and easy recessed installation. Built-in T-grid clips are included for a more secure fit and added safety.

► **APPLICATION** - Perfect commercial or industrial solution for offices, hospitals, schools, retail, workshops, and many other applications. It is also Damp Locations rated.

► **ADVANTAGES** - With calculated lifespan up to 180,000 hours, these fixtures are made to last decades under normal operation! ASD provides a 5-year limited warranty along with UL and DLC Standard certifications to guarantee top quality products and safety!

<i>Catalog number</i>	
<i>Notes</i>	
<i>Type</i>	



Model	Type	Watts	Voltage	Dimmable	Lumens	CCT	Finish	Dimensions (LxWxH)	Pre-installed
<b>LTR</b>									
ASD-LTR-22A30-2P	2x2	20/25/30W	120-277 V	0-10 V	up to 4,025 lm	3CCT (3,500/4,000/5,000 K)	White	23-3/4" x 23-3/4" x 2-1/8"	-
ASD-LTR-24A45-2P	2x4	34/38/45W	120-277 V	0-10 V	up to 6,194 lm	3CCT (3,500/4,000/5,000 K)	White	47-3/4" x 23-3/4" x 2-1/8"	-
<b>LTR-EM WITH BATTERY BACK-UP</b>									
ASD-LTR-22A30-EM-2P	2x2	20/25/30W	120-277 V	0-10 V	up to 4,025 lm	3CCT (3,500/4,000/5,000 K)	White	23-3/4" x 23-3/4" x 2-1/8"	Battery back-up 8W
ASD-LTR-24A45-EM-2P	2x4	34/38/45W	120-277 V	0-10 V	up to 6,194 lm	3CCT (3,500/4,000/5,000 K)	White	47-3/4" x 23-3/4" x 2-1/8"	Battery back-up 8W

For detailed luminous flux information please refer to Annex 1.

## ORDERING INFORMATION

Model	UPC	Pcs. (pack) per carton	Carton size	Carton weight
<b>LTR</b>				
ASD-LTR-22A30-2P	810128115841	2 (1)	24.4" x 24.4" x 4.8"	15 lbs
ASD-LTR-24A45-2P	810128115858	2 (1)	48.4" x 24.4" x 4.8"	24.7 lbs
<b>LTR-EM WITH BATTERY BACK-UP</b>				
ASD-LTR-22A30-EM-2P	810128115865	2 (1)	24.4" x 24.4" x 4.8"	17.6 lbs
ASD-LTR-24A45-EM-2P	810128115872	2 (1)	48.4" x 24.4" x 4.8"	27.3 lbs

## ANNEX 1

Model	Watts	3,500 K	4,000 K	5,000 K
ASD-LTR-22A30-2P ASD-LTR-22A30-EM-2P	20W	2,728 lm	2,817 lm	2,772 lm
	25W	3,354 lm	3,488 lm	3,392 lm
	30W	3,853 lm	4,025 lm	3,909 lm
ASD-LTR-24A45-2P ASD-LTR-24A45-EM-2P	34W	4,688 lm	4,841 lm	4,759 lm
	38W	5,174 lm	5,357 lm	5,245 lm
	45W	5,975 lm	6,194 lm	6,028 lm

For most up-to-date spec sheets please refer to [asd-lighting.com](http://asd-lighting.com)



# LED TROFFER LIGHT

## PRODUCT SPECIFICATIONS:

Construction & Materials	
Housing	Steel
Lens	PC
Finish	White
Weight	ASD-LTR-22A30-2P 13.9 lbs (6.3 kg)
	ASD-LTR-24A45-2P 22.9 lbs (10.4 kg)
	ASD-LTR-22A30-EM-2P 16.5 lbs (7.5 kg)
	ASD-LTR-24A45-EM-2P 25.6 lbs (11.6 kg)
Environmental system	
Work environment	Suitable for Damp Locations
Operating temperature	-4°F to 122°F (-20°C to 50°C)
L-70 Life	R > 102,000 hrs; C > 180,000 hrs
Optical system	
Color temperature	3 CCT switch (3,500/4,000/5,000 K), 5,000 K by default
CRI	> 80
Electrical system	
Input voltage	120-277 V
Max input current	ASD-LTR-22A30-2P 0.35 A
	ASD-LTR-24A45-2P 0.44 A
	ASD-LTR-22A30-EM-2P 0.42 A
	ASD-LTR-24A45-EM-2P 0.25 A
Inrush current (Action time)	ASD-LTR-22A30-2P 75 A (1 S)
	ASD-LTR-24A45-2P 60 A (1 S)
	ASD-LTR-22A30-EM-2P 75 A (1 S)
	ASD-LTR-24A45-EM-2P 45 A (1 S)
Off state power	0W
Power consumption	for 2x2 models: 20/25/30W for 2x4 models: 34/38/45W
Power factor	> 0.9
Output voltage	30-42 V
Max output current	for 2x2 models: 0.45/0.54/0.65 A for 2x4 models: 0.75/0.85/0.95 A
Surge protection DM/CM	2.5 kV / 2.5 kV
Dimming compatible controls	
Brand	Legrand Lutron
Models	RH4FBL3PW NTSTV-DV DVSTV DS710 IP710 NFTV
Regular and voluntary certifications	
5-year limited warranty	
DesignLights Consortium (DLC) listed (Classification: Standard)	
Main: Indoor luminaires; General application: Troffer;	
Primary use: Luminaires for ambient lighting of Interior commercial spaces	
UL certified E473854	

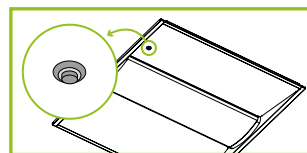
## PACKAGE CONTENTS:

Description	Q-ty
LED Troffer Light	2
Box	1

## BUILT-IN BATTERY BACK-UP INFORMATION

Model	Battery watts	Lumens in emergency mode	Battery capacity	Emergency mode	Charging time
ASD-LTR-22A30-EM-2P	8W	1,420 lm	2,500 mAh	90 min	≥ 24 hours
ASD-LTR-24A45-EM-2P	8W	1,420 lm	2,500 mAh	90 min	≥ 24 hours

## STANDARD OPERATION DISPLAY STATUS:



Button	Remarks
ON	Charging mode, Battery is fully charged, AC power is ON
OFF	Emergency mode, Battery is discharging, AC power is OFF

You can disable the battery by double-pressing the test button.

For most up-to-date spec sheets please refer to [asd-lighting.com](http://asd-lighting.com)



# LED TROFFER LIGHT

## INSTALLATION GUIDE

### IMPORTANT SAFETY INFORMATION:

Please read all the instructions below before installation.

- ▶ Make sure that the supply voltage corresponds to the rated product voltage.
- ▶ The product must be installed by a qualified electrician in accordance with the National Electrical Code and corresponding local codes.
- ▶ If the product is damaged, do not use it.

### ⚠ WARNING

**Risk of personal injury – read and follow all warnings and installation instructions.** Keep or give to the owner for future reference.

**Risk of cuts:** Wear gloves to prevent cuts or abrasions when removing from carton, handling, installing, and maintaining this product.

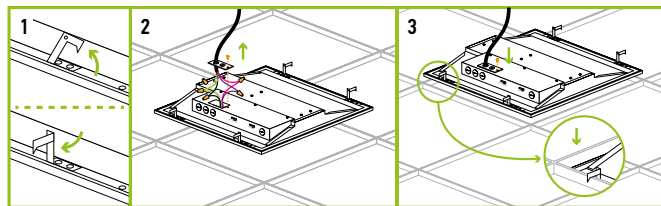
**Risk of electric shock:** This product must be installed in accordance with the applicable installation code by a person familiar with the construction and operation of the product and the hazards involved.

**Risk of Fire:** Minimum 194°F supply conductors. Consult a qualified electrician to ensure correct branch circuit conductor.

ASD® assumes no responsibility for claims arising out of improper or careless installation or handling of this product.

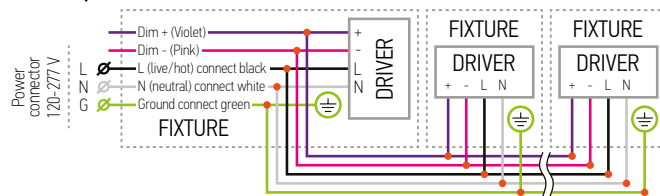
### INSTALLATION STEPS:

1. Lift all mounting clips along the edges of the panel. Turn the mounting clip head.
2. Remove the knockout hole on box with a screwdriver, remove screw and take out the driver cover. Connect the wires inside the driver box: Black to Black, White to White, Green to Green.
3. Cover the driver box and tighten it with a screwdriver, finish connection.



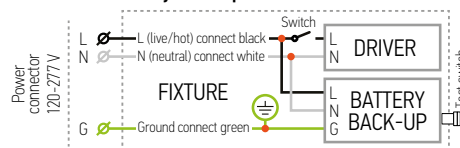
### ELECTRICAL SCHEMATIC DIAGRAM:

#### LTR multiple fixture connection

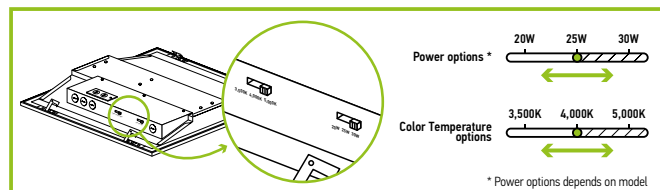


**Linking limits:** The total maximum power of all lamps connected one to another in line should not exceed 500 watts at 120 volts or 1000 watts at 277 volts. For example, if a troffer model ASD-LTR-24A45-2P is operated at 45 watts and 277 volts, the maximum number of these models is 1000/45, or 22 units.

#### LTR-EM with battery back-up



### POWER AND COLOR TEMPERATURE SETTINGS:



For most up-to-date spec sheets please refer to [asd-lighting.com](http://asd-lighting.com)