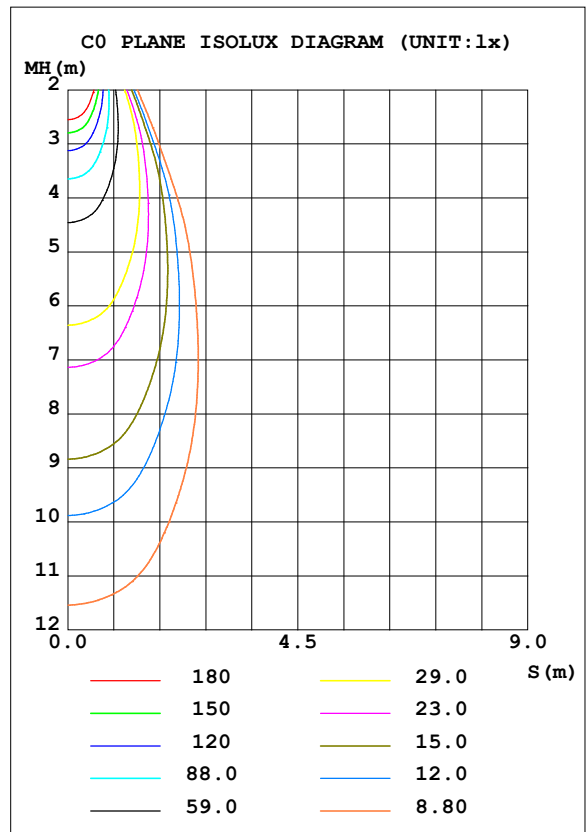
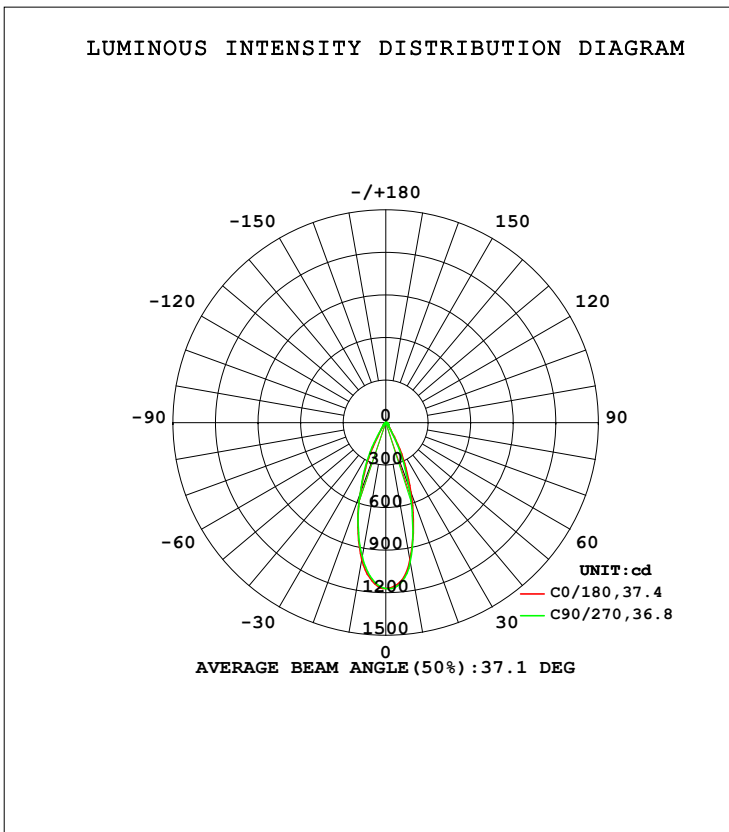


LUMINAIRE PHOTOMETRIC TEST REPORT

Test:U:119.99V I:0.0686A P:7.7421W PF:0.9537 Freq:59.98Hz Lamp Flux:536.397x1 lm		
NAME: ASD-CD-CR-2D8AC-CH/WH	TYPE:	WEIGHT:
SPEC.:3000K 90	DIM.:	SERIAL No.:
MFR.: ASD Lighting Corp	SUR.:	Shielding Angle:

DATA OF LAMP		PHOTOMETRIC DATA Eff: 69.28 lm/W			
MODEL		I _{max} (cd)	1172	S/MH (C0/180)	0.61
NOMINAL POWER (W)	8	LOR (%)	100.0	S/MH (C90/270)	0.62
RATED VOLTAGE (V)	120	TOTAL FLUX (lm)	536.40	<input type="checkbox"/> UP, DN (C0-180)	0.0, 49.8
NOMINAL FLUX (lm)	536.397	CIE CLASS	DIRECT	<input type="checkbox"/> UP, DN (C180-360)	0.0, 50.2
LAMPS INSIDE	1	<input type="checkbox"/> up (%)	0.0	CIBSE SHR NOM	0.50
TEST VOLTAGE (V)	120	<input type="checkbox"/> down (%)	100.0	CIBSE SHR MAX	0.65



C Range: 0 - 360DEG
 C Interval: 22.5DEG
 Test Speed: HIGH
 Temperature: 25.3DEG
 Operators:
 Test Date: 2021-10-20

Range: 0 - 90DEG
 Interval: 1.0DEG
 Test System: EVERFINE GO-SPEX500_V1 SYSTEM V2.00.421
 Humidity: 65.0%
 Test Distance: 3.080m [K=1.0000]
 Remarks:

ZONAL FLUX DIAGRAM

ZONAL FLUX DIAGRAM:

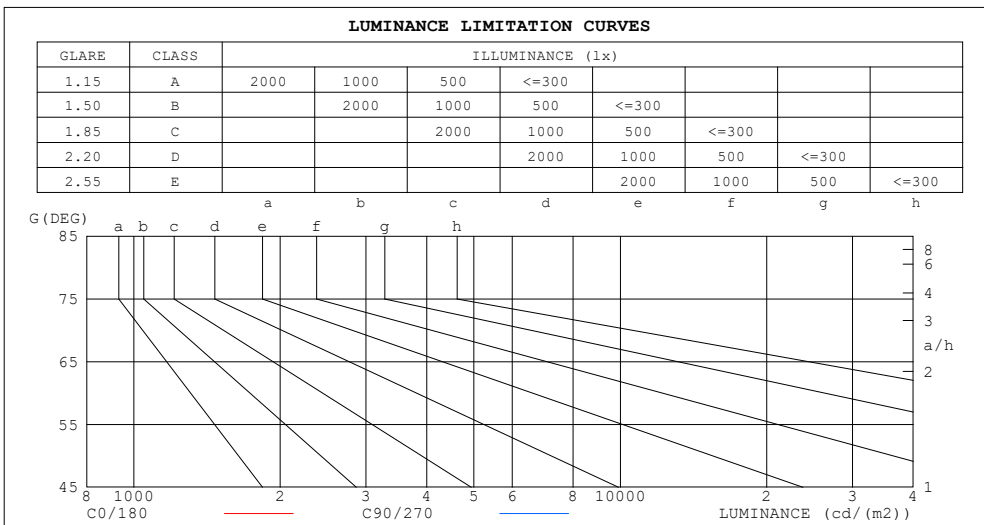
mm	C0	C45	C90	C135	C180	C225	C270	C315	mm	□ zone	□ total	%lum, lamp
10	983.4	982.7	997.4	996.3	981.1	982.6	960.4	976.8	0- 10	103.0	103.0	19.2,19.2
20	520.5	577.7	480.3	512.0	526.1	501.2	533.7	541.8	10- 20	207.9	310.9	58,58
30	142.7	162.4	115.1	113.9	121.7	133.2	167.0	169.3	20- 30	143.8	454.7	84.8,84.8
40	31.47	31.99	30.28	30.60	31.12	32.18	34.35	34.40	30- 40	40.33	495.0	92.3,92.3
50	17.34	16.86	16.88	17.25	18.04	18.28	18.44	18.20	40- 50	18.10	513.1	95.7,95.7
60	9.170	9.023	9.230	9.575	9.950	9.984	9.851	9.561	50- 60	11.53	524.7	97.8,97.8
70	4.704	4.638	4.840	5.118	5.403	5.445	5.280	4.987	60- 70	7.057	531.7	99.1,99.1
80	1.912	1.835	1.923	2.096	2.328	2.429	2.317	2.125	70- 80	3.675	535.4	99.8,99.8
90	0.0120	0.0103	0.0103	0.0067	0.0133	0.0147	0.0164	0.0164	80- 90	0.9830	536.4	100,100
100									90-100			
110									100-110			
120									110-120			
130									120-130			
140									130-140			
150									140-150			
160									150-160			
170									160-170			
180									170-180			
DEG	LUMINOUS INTENSITY:cd									UNIT:lm		

C Range: 0 - 360DEG
 C Interval: 22.5DEG
 Test Speed: HIGH
 Temperature:25.3DEG
 Operators:
 Test Date:2021-10-20

□ Range: 0 - 90DEG
 □ Interval: 1.0DEG
 Test System:EVERFINE GO-SPEX500_V1 SYSTEM V2.00.421
 Humidity:65.0%
 Test Distance:3.080m [K=1.0000]
 Remarks:

LUMINANCE LIMITATION CURVES

Test:U:119.99V I:0.0686A P:7.7421W PF:0.9537 Freq:59.98Hz Lamp Flux:536.397x1 lm		
NAME: ASD-CD-CR-2D8AC-CH/WH	TYPE:	WEIGHT:
SPEC.:3000K 90	DIM.:	SERIAL No.:
MFR.: ASD Lighting Corp	SUR.:	Shielding Angle:



LUMINANCE cd/(m2)		
G (DEG)	C0/180	C90/270
85	33	84
80	99	100
75	110	113
70	124	127
65	142	145
60	165	166
55	192	190
50	243	236
45	288	281

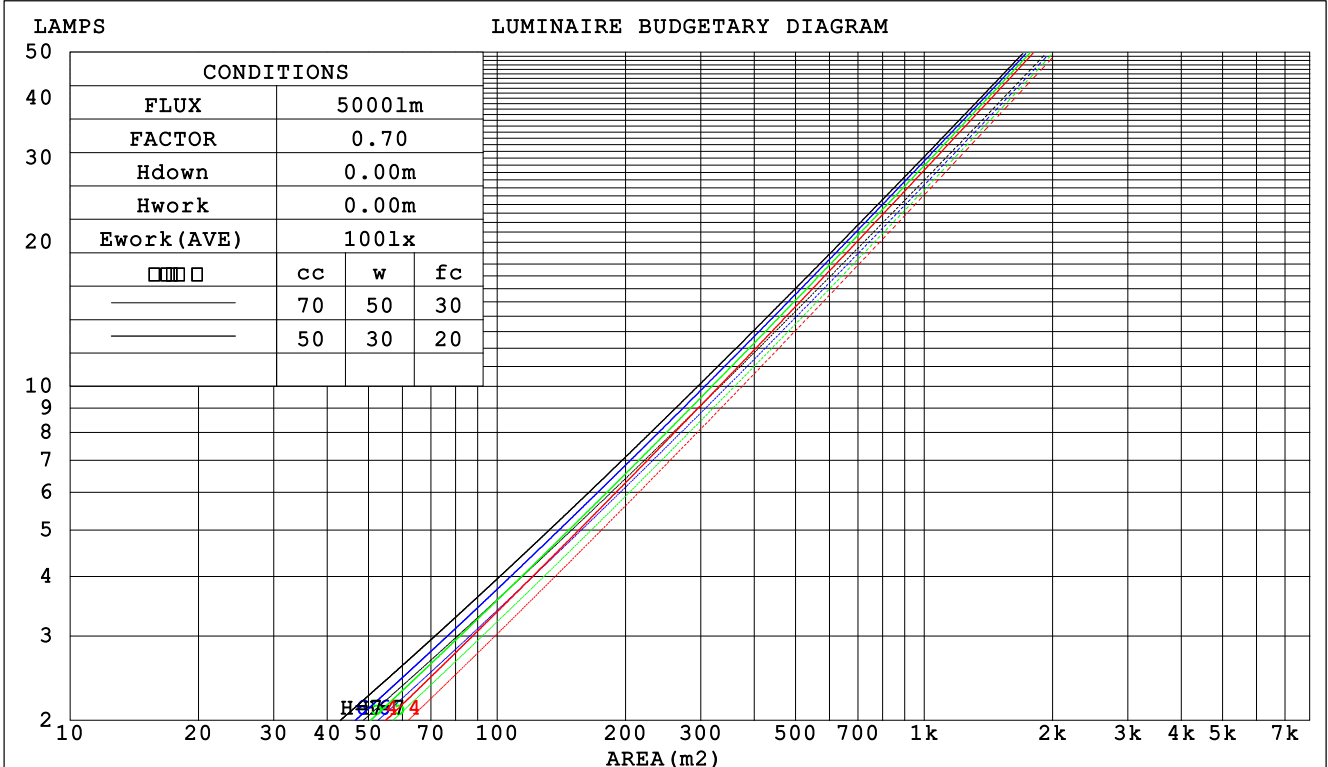
C Range: 0 - 360DEG
 C Interval: 22.5DEG
 Test Speed: HIGH
 Temperature:25.3DEG
 Operators:
 Test Date:2021-10-20

Range: 0 - 90DEG
 Interval: 1.0DEG
 Test System:EVERFINE GO-SPEX500_V1 SYSTEM V2.00.421
 Humidity:65.0%
 Test Distance:3.080m [K=1.0000]
 Remarks:

CU AND LUMINAIRE BUDGETARY ESTIMATE DIAGRAM

Test:U:119.99V I:0.0686A P:7.7421W PF:0.9537 Freq:59.98Hz Lamp Flux:536.397x1 lm		
NAME: ASD-CD-CR-2D8AC-CH/WH	TYPE:	WEIGHT:
SPEC.:3000K 90	DIM.:	SERIAL No.:
MFR.: ASD Lighting Corp	SUR.:	Shielding Angle:

<input type="checkbox"/> cc	80%			70%			50%			30%			10%			0
<input type="checkbox"/> w	50%	30%	10%	50%	30%	10%	50%	30%	10%	50%	30%	10%	50%	30%	10%	0
<input type="checkbox"/> fc	20%			20%			20%			20%			20%			0
RCR	RCR:Room Cavity Ratio						Coefficients of Utilization(CU)									
0.0	1.19	1.19	1.19	1.16	1.16	1.16	1.11	1.11	1.11	1.06	1.06	1.06	1.02	1.02	1.02	1.00
1.0	1.11	1.09	1.07	1.09	1.07	1.05	1.05	1.03	1.02	1.01	1.00	.99	.98	.97	.96	.94
2.0	1.04	1.01	.98	1.03	.99	.96	.99	.97	.94	.97	.94	.92	.94	.92	.90	.89
3.0	.98	.94	.90	.97	.93	.89	.94	.91	.88	.92	.89	.87	.90	.87	.85	.84
4.0	.93	.88	.84	.92	.87	.84	.90	.86	.83	.88	.85	.82	.86	.83	.81	.79
5.0	.88	.83	.79	.87	.82	.79	.86	.81	.78	.84	.80	.77	.82	.79	.77	.75
6.0	.84	.79	.75	.83	.78	.75	.82	.77	.74	.80	.77	.74	.79	.76	.73	.72
7.0	.80	.75	.71	.79	.74	.71	.78	.74	.71	.77	.73	.70	.76	.72	.70	.69
8.0	.76	.71	.68	.76	.71	.68	.75	.70	.67	.74	.70	.67	.73	.69	.67	.66
9.0	.73	.68	.65	.73	.68	.65	.72	.67	.64	.71	.67	.64	.70	.67	.64	.63
10.0	.70	.65	.62	.70	.65	.62	.69	.65	.62	.68	.64	.61	.68	.64	.61	.60



C Range: 0 - 360DEG
 C Interval: 22.5DEG
 Test Speed: HIGH
 Temperature:25.3DEG
 Operators:
 Test Date:2021-10-20

Range: 0 - 90DEG
 Interval: 1.0DEG
 Test System:EVERFINE GO-SPEX500_V1 SYSTEM V2.00.421
 Humidity:65.0%
 Test Distance:3.080m [K=1.0000]
 Remarks:

WEC AND CCEC

Test:U:119.99V I:0.0686A P:7.7421W PF:0.9537 Freq:59.98Hz Lamp Flux:536.397x1 lm		
NAME: ASD-CD-CR-2D8AC-CH/WH	TYPE:	WEIGHT:
SPEC.:3000K 90	DIM.:	SERIAL No.:
MFR.: ASD Lighting Corp	SUR.:	Shielding Angle:

<input type="checkbox"/> cc	80%	70%	50%	30%	10%	0
<input type="checkbox"/> w	50% 30% 10%	50% 30% 10%	50% 30% 10%	50% 30% 10%	50% 30% 10%	0
<input type="checkbox"/> fc	20%	20%	20%	20%	20%	0
RCR	RCR:Room Cavity Ratio		Wall Exitance Coefficients (WEC)			
0.0						
1.0	.168 .095 .030	.161 .092 .029	.149 .085 .027	.137 .079 .025	.126 .073 .024	
2.0	.158 .087 .027	.152 .084 .026	.142 .079 .025	.132 .074 .023	.123 .070 .022	
3.0	.148 .079 .024	.144 .077 .023	.135 .073 .022	.127 .069 .021	.119 .066 .020	
4.0	.140 .073 .021	.136 .071 .021	.128 .068 .020	.121 .065 .020	.115 .062 .019	
5.0	.132 .067 .020	.129 .066 .019	.122 .064 .019	.116 .061 .018	.110 .059 .018	
6.0	.125 .063 .018	.122 .062 .018	.116 .060 .017	.111 .058 .017	.106 .056 .017	
7.0	.119 .059 .017	.116 .058 .017	.111 .056 .016	.107 .055 .016	.102 .053 .016	
8.0	.114 .055 .016	.111 .055 .015	.107 .053 .015	.103 .052 .015	.099 .051 .015	
9.0	.108 .052 .015	.106 .052 .015	.102 .051 .014	.099 .049 .014	.095 .048 .014	
10.0	.104 .050 .014	.102 .049 .014	.098 .048 .014	.095 .047 .013	.092 .046 .013	

<input type="checkbox"/> cc	80%	70%	50%	30%	10%	0
<input type="checkbox"/> w	50% 30% 10%	50% 30% 10%	50% 30% 10%	50% 30% 10%	50% 30% 10%	0
<input type="checkbox"/> fc	20%	20%	20%	20%	20%	0
RCR	RCR:Room Cavity Ratio		Ceiling Cavity Exitance Coefficients (CCEC)			
0.0	.190 .190 .190	.163 .163 .163	.111 .111 .111	.064 .064 .064	.020 .020 .020	
1.0	.170 .157 .146	.146 .135 .125	.100 .093 .087	.057 .054 .050	.018 .017 .016	
2.0	.154 .133 .114	.132 .114 .099	.091 .079 .069	.052 .046 .040	.017 .015 .013	
3.0	.141 .113 .091	.121 .098 .079	.083 .068 .056	.048 .040 .033	.015 .013 .011	
4.0	.130 .099 .075	.111 .085 .065	.077 .059 .046	.044 .035 .027	.014 .011 .009	
5.0	.120 .087 .062	.103 .075 .054	.071 .052 .038	.041 .031 .023	.013 .010 .007	
6.0	.112 .077 .052	.097 .067 .045	.067 .047 .032	.039 .028 .019	.012 .009 .006	
7.0	.105 .069 .044	.091 .060 .038	.063 .042 .027	.036 .025 .016	.012 .008 .005	
8.0	.099 .063 .038	.085 .055 .033	.059 .038 .023	.034 .023 .014	.011 .007 .005	
9.0	.094 .057 .033	.081 .050 .029	.056 .035 .020	.033 .021 .012	.011 .007 .004	
10.0	.089 .053 .029	.077 .046 .025	.053 .032 .018	.031 .019 .011	.010 .006 .004	

C Range: 0 - 360DEG
 C Interval: 22.5DEG
 Test Speed: HIGH
 Temperature:25.3DEG
 Operators:
 Test Date:2021-10-20

Range: 0 - 90DEG
 Interval: 1.0DEG
 Test System:EVERFINE GO-SPEX500_V1 SYSTEM V2.00.421
 Humidity:65.0%
 Test Distance:3.080m [K=1.0000]
 Remarks:

UGR(Unified Glare Rating) Table

Test:U:119.99V I:0.0686A P:7.7421W PF:0.9537 Freq:59.98Hz Lamp Flux:536.397x1 lm										
NAME: ASD-CD-CR-2D8AC-CH/WH					TYPE:			WEIGHT:		
SPEC.:3000K 90					DIM.:			SERIAL No.:		
MFR.: ASD Lighting Corp					SUR.:			Shielding Angle:		
ceiling/cavity	0.7	0.7	0.5	0.5	0.3	0.7	0.7	0.5	0.5	0.3
walls	0.5	0.3	0.5	0.3	0.3	0.5	0.3	0.5	0.3	0.3
working plane	0.2	0.2	0.2	0.2	0.2	0.2	0.2	0.2	0.2	0.2
Room dimensions	Viewed crosswise					Viewed endwise				
x = 2H y = 2H	4.0	4.8	4.2	5.0	5.1	3.6	4.4	3.8	4.6	4.7
3H	4.5	5.3	4.8	5.5	5.7	4.2	5.0	4.5	5.2	5.4
4H	4.7	5.5	5.0	5.7	5.9	4.5	5.2	4.7	5.4	5.6
6H	4.9	5.6	5.2	5.8	6.1	4.6	5.3	4.9	5.6	5.8
8H	4.9	5.6	5.2	5.8	6.1	4.7	5.4	5.0	5.6	5.9
12H	4.9	5.5	5.2	5.8	6.1	4.7	5.4	5.0	5.6	5.9
4H 2H	4.2	4.9	4.4	5.1	5.3	3.8	4.5	4.1	4.7	5.0
3H	4.8	5.5	5.1	5.7	6.0	4.6	5.2	4.9	5.5	5.8
4H	5.1	5.7	5.5	6.0	6.3	4.9	5.5	5.3	5.8	6.1
6H	5.4	5.9	5.8	6.2	6.6	5.2	5.7	5.6	6.1	6.4
8H	5.5	5.9	5.8	6.3	6.7	5.3	5.8	5.7	6.1	6.5
12H	5.4	5.9	5.8	6.2	6.6	5.4	5.8	5.8	6.2	6.6
8H 4H	5.2	5.7	5.6	6.0	6.4	5.0	5.5	5.4	5.8	6.2
6H	5.5	5.9	6.0	6.3	6.8	5.4	5.8	5.8	6.2	6.6
8H	5.7	6.0	6.1	6.4	6.9	5.5	5.9	6.0	6.3	6.7
12H	5.7	6.0	6.2	6.4	6.9	5.6	5.9	6.1	6.4	6.9
12H 4H	5.2	5.6	5.6	6.0	6.4	5.0	5.4	5.4	5.8	6.2
6H	5.5	5.9	6.0	6.3	6.8	5.4	5.7	5.8	6.2	6.6
8H	5.7	6.0	6.2	6.4	6.9	5.6	5.9	6.0	6.3	6.8
Variations with the observer position at spacings:										
S = 1.0H	+ 0.7 / - 0.8					+ 0.6 / - 0.7				
1.5H	+ 0.9 / - 0.5					+ 0.7 / - 0.4				
2.0H	+ 1.1 / - 0.7					+ 1.0 / - 0.7				

CIE Pub.117, 536.4 lm Total Lamp Luminous Flux Correct (8log(F/F0) = -2.2)
 Area: 0.111111 m2

C Range: 0 - 360DEG
 C Interval: 22.5DEG
 Test Speed: HIGH
 Temperature:25.3DEG
 Operators:
 Test Date:2021-10-20

Range: 0 - 90DEG
 Interval: 1.0DEG
 Test System:EVERFINE GO-SPEX500_V1 SYSTEM V2.00.421
 Humidity:65.0%
 Test Distance:3.080m [K=1.0000]
 Remarks:

UTILIZATION FACTORS TABLE

Test:U:119.99V I:0.0686A P:7.7421W PF:0.9537 Freq:59.98Hz Lamp Flux:536.397x1 lm		
NAME: ASD-CD-CR-2D8AC-CH/WH	TYPE:	WEIGHT:
SPEC.:3000K 90	DIM.:	SERIAL No.:
MFR.: ASD Lighting Corp	SUR.:	Shielding Angle:

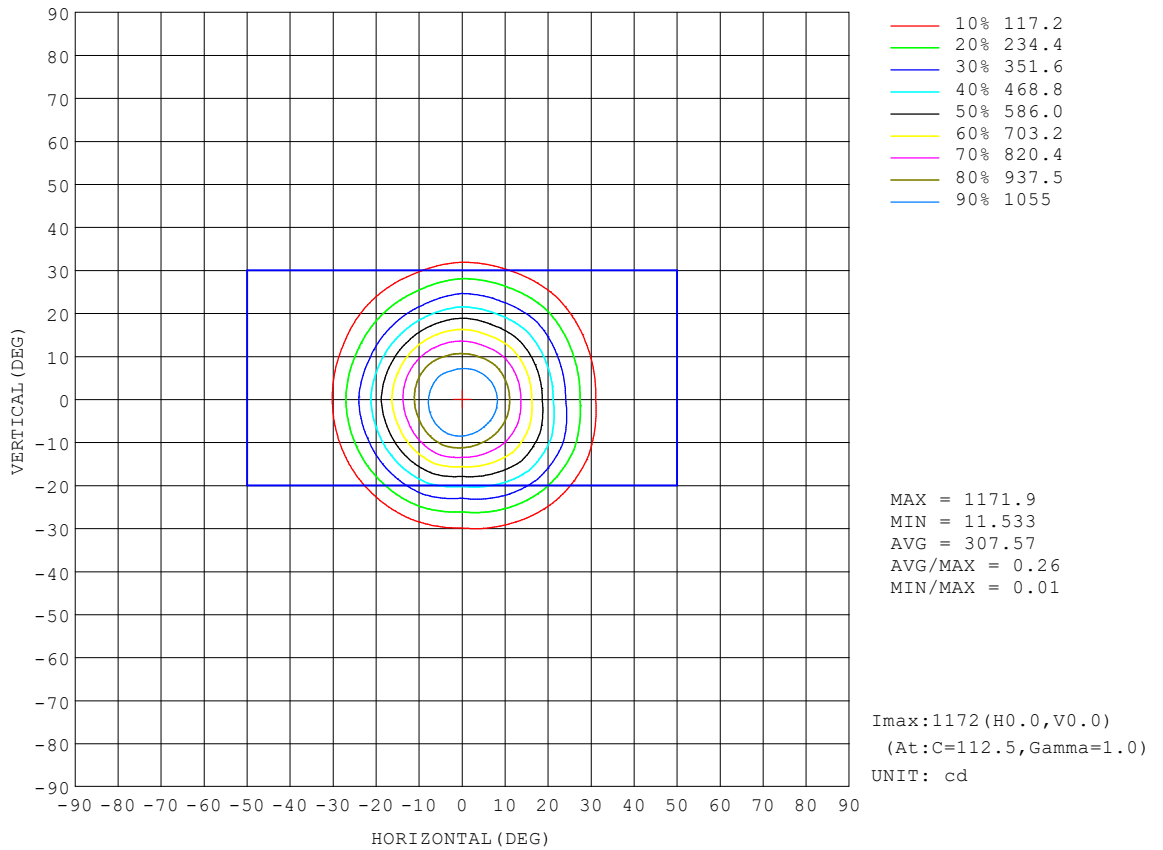
REFLECTANCE										
Ceiling	0.8	0.8	0.8	0.7	0.7	0.7	0.5	0.5	0.5	0
Walls	0.7	0.5	0.3	0.7	0.5	0.3	0.7	0.5	0.3	0
Working plane	0.2	0.2	0.2	0.2	0.2	0.2	0.2	0.2	0.2	0
ROOM INDEX	UTILIZATION FACTORS (PERCENT) $k(RI) \times RCR = 5$									
k = 0.60	87	80	76	86	80	76	85	80	76	73
0.80	94	88	84	93	88	84	92	87	84	80
1.00	99	93	89	98	92	89	96	92	88	84
1.25	103	97	94	102	97	93	100	96	93	88
1.50	105	100	97	104	100	97	102	98	95	91
2.00	108	104	101	107	103	100	104	101	98	93
2.50	110	106	103	108	105	102	105	102	100	94
3.00	111	108	105	110	107	104	106	104	102	95
4.00	114	111	108	111	109	107	108	106	104	97
5.00	115	113	111	113	111	109	109	107	106	98
ROOM INDEX	UF(total)									Direct
According to DIN EN 13032-2 2004			Suspended				SHRNOM = 1.25			

C Range: 0 - 360DEG
 C Interval: 22.5DEG
 Test Speed: HIGH
 Temperature:25.3DEG
 Operators:
 Test Date:2021-10-20

Range: 0 - 90DEG
 Interval: 1.0DEG
 Test System:EVERFINE GO-SPEX500_V1 SYSTEM V2.00.421
 Humidity:65.0%
 Test Distance:3.080m [K=1.0000]
 Remarks:

ISOCANDELA DIAGRAM

Test:U:119.99V I:0.0686A P:7.7421W PF:0.9537 Freq:59.98Hz Lamp Flux:536.397x1 lm		
NAME: ASD-CD-CR-2D8AC-CH/WH	TYPE:	WEIGHT:
SPEC.:3000K 90	DIM.:	SERIAL No.:
MFR.: ASD Lighting Corp	SUR.:	Shielding Angle:

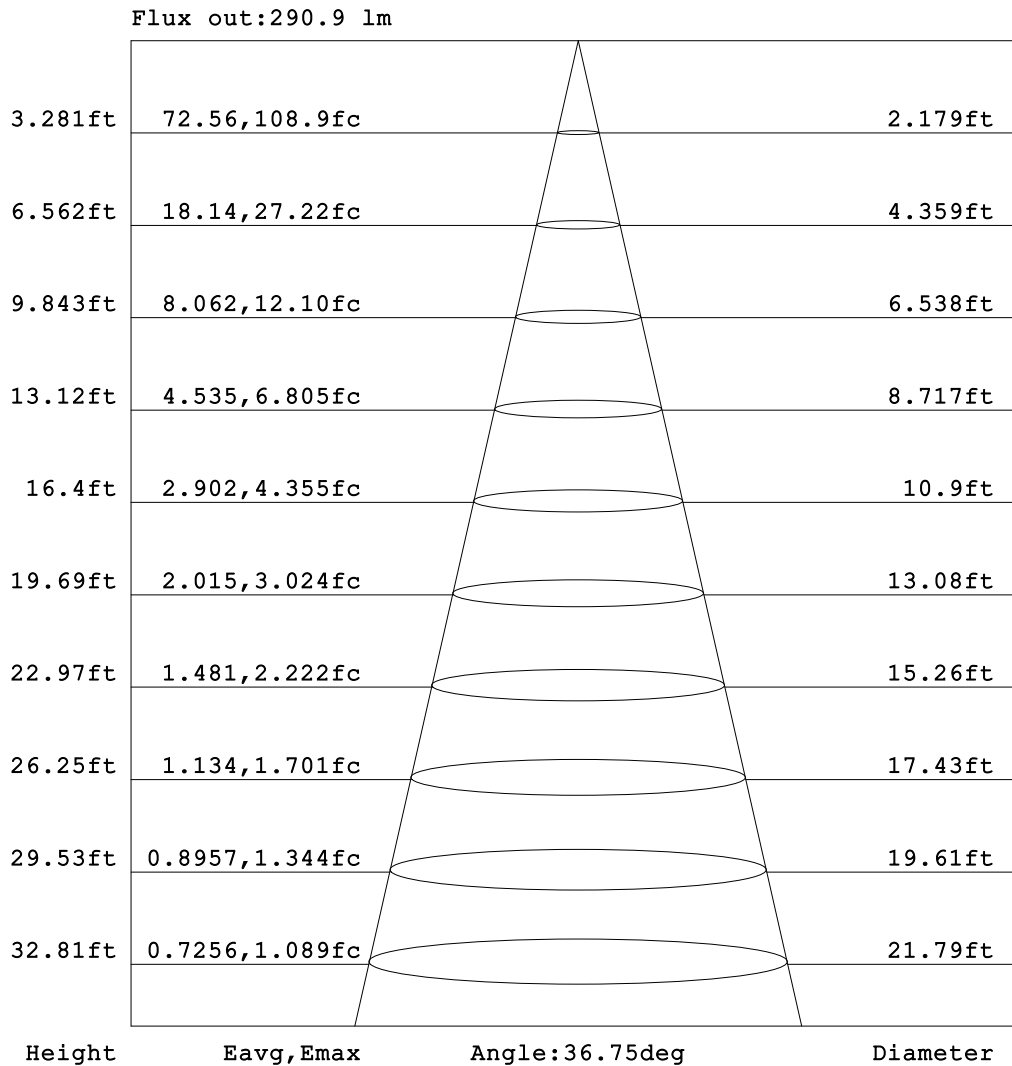


C Range: 0 - 360DEG
 C Interval: 22.5DEG
 Test Speed: HIGH
 Temperature:25.3DEG
 Operators:
 Test Date:2021-10-20

Range: 0 - 90DEG
 Interval: 1.0DEG
 Test System:EVERFINE GO-SPEX500_V1 SYSTEM V2.00.421
 Humidity:65.0%
 Test Distance:3.080m [K=1.0000]
 Remarks:

AAI Figure

Test:U:119.99V I:0.0686A P:7.7421W PF:0.9537 Freq:59.98Hz Lamp Flux:536.397x1 lm		
NAME: ASD-CD-CR-2D8AC-CH/WH	TYPE:	WEIGHT:
SPEC.:3000K 90	DIM.:	SERIAL No.:
MFR.: ASD Lighting Corp	SUR.:	Shielding Angle:



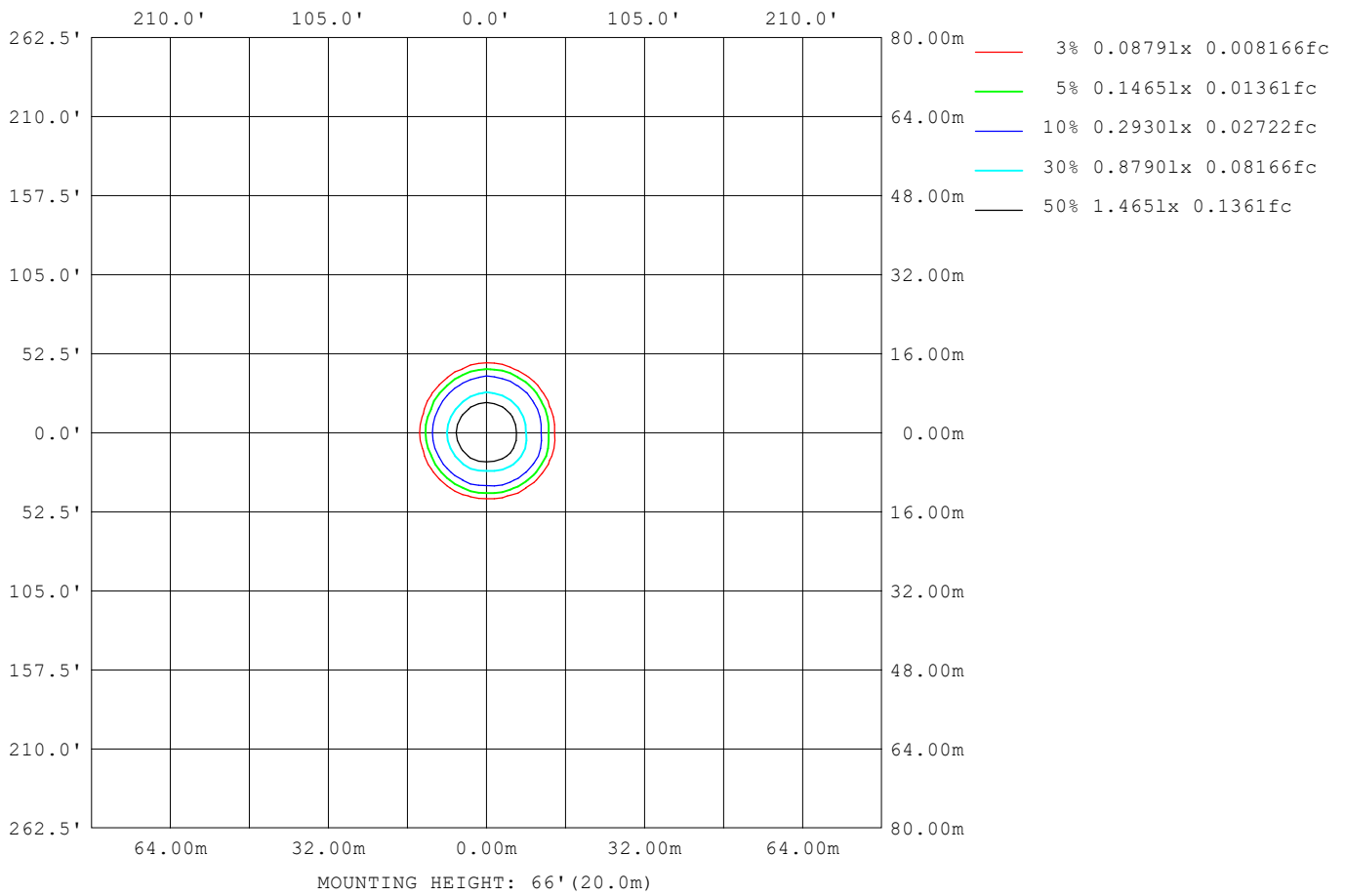
Note:The Curves indicate the illuminated area and the average illumination when the luminaire is at different distance.

C Range: 0 - 360DEG
 C Interval: 22.5DEG
 Test Speed: HIGH
 Temperature:25.3DEG
 Operators:
 Test Date:2021-10-20

Range: 0 - 90DEG
 Interval: 1.0DEG
 Test System:EVERFINE GO-SPEX500_V1 SYSTEM V2.00.421
 Humidity:65.0%
 Test Distance:3.080m [K=1.0000]
 Remarks:

ISOLUX DIAGRAM

Test:U:119.99V I:0.0686A P:7.7421W PF:0.9537 Freq:59.98Hz Lamp Flux:536.397x1 lm		
NAME: ASD-CD-CR-2D8AC-CH/WH	TYPE:	WEIGHT:
SPEC.:3000K 90	DIM.:	SERIAL No.:
MFR.: ASD Lighting Corp	SUR.:	Shielding Angle:



C Range: 0 - 360DEG
 C Interval: 22.5DEG
 Test Speed: HIGH
 Temperature:25.3DEG
 Operators:
 Test Date:2021-10-20

Range: 0 - 90DEG
 Interval: 1.0DEG
 Test System:EVERFINE GO-SPEX500_V1 SYSTEM V2.00.421
 Humidity:65.0%
 Test Distance:3.080m [K=1.0000]
 Remarks:

LED Avg.L Report

Test:U:119.99V I:0.0686A P:7.7421W PF:0.9537 Freq:59.98Hz Lamp Flux:536.397x1 lm		
NAME: ASD-CD-CR-2D8AC-CH/WH	TYPE:	WEIGHT:
SPEC.:3000K 90	DIM.:	SERIAL No.:
MFR.: ASD Lighting Corp	SUR.:	Shielding Angle:

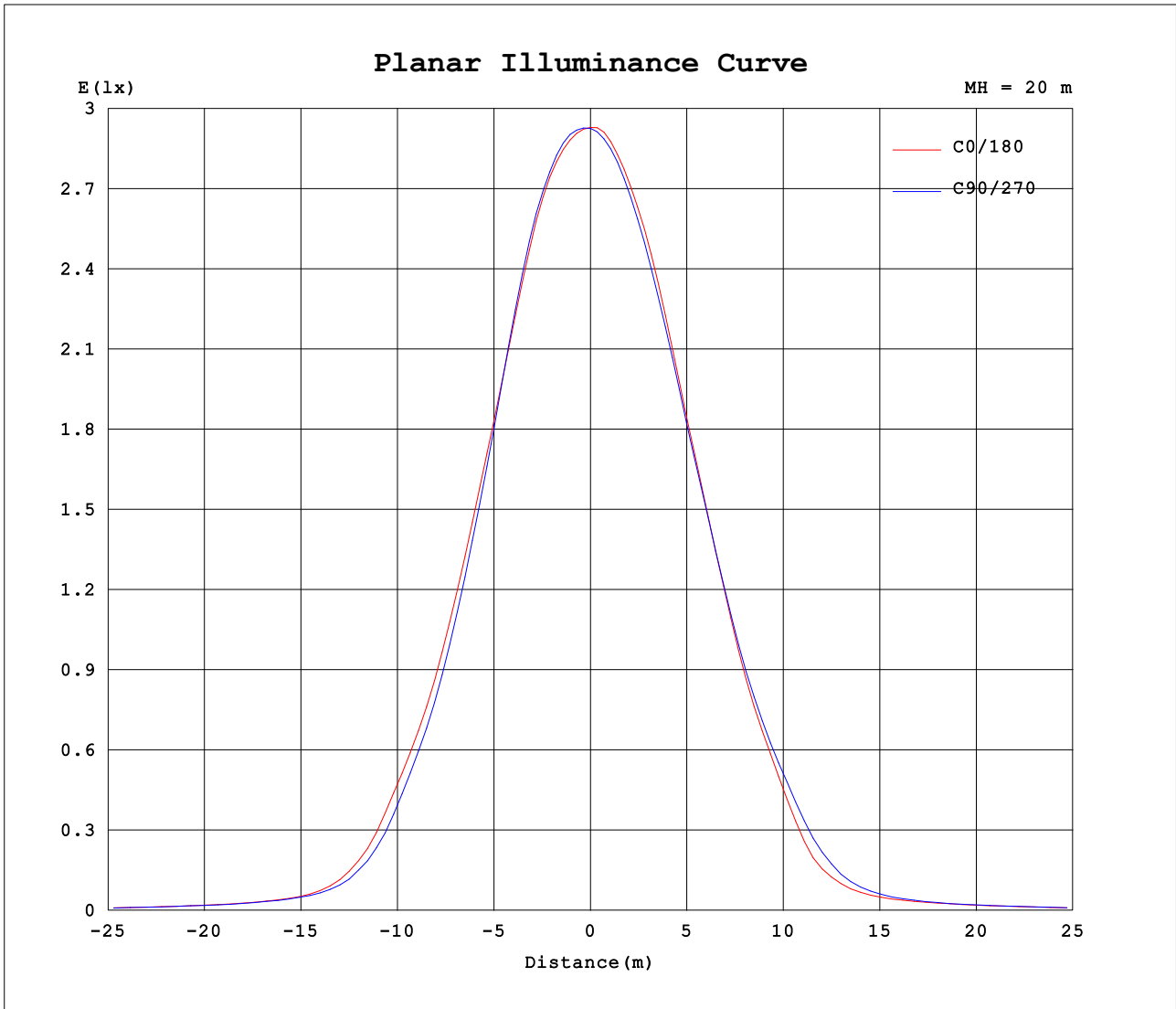
AvgL	cd/m2
L_0~180 (65) av	151
L_0~180 (75) av	120
L_0~180 (85) av	36
L_90~270 (65) av	150
L_90~270 (75) av	120
L_90~270 (85) av	90
L_45 (65) av	150
L_45 (75) av	119
L_45 (85) av	101

Standard: GB/T 29293-2012

C Range: 0 - 360DEG
 C Interval: 22.5DEG
 Test Speed: HIGH
 Temperature:25.3DEG
 Operators:
 Test Date:2021-10-20

Range: 0 - 90DEG
 Interval: 1.0DEG
 Test System:EVERFINE GO-SPEX500_V1 SYSTEM V2.00.421
 Humidity:65.0%
 Test Distance:3.080m [K=1.0000]
 Remarks:

Planar Illuminance Curve



C Range: 0 - 360DEG
 C Interval: 22.5DEG
 Test Speed: HIGH
 Temperature:25.3DEG
 Operators:
 Test Date:2021-10-20

Range: 0 - 90DEG
 Interval: 1.0DEG
 Test System:EVERFINE GO-SPEX500_V1 SYSTEM V2.00.421
 Humidity:65.0%
 Test Distance:3.080m [K=1.0000]
 Remarks:

LUMINOUS DISTRIBUTION INTENSITY DATA

Test:U:119.99V I:0.0686A P:7.7421W PF:0.9537 Freq:59.98Hz Lamp Flux:536.397x1 lm		
NAME: ASD-CD-CR-2D8AC-CH/WH	TYPE:	WEIGHT:
SPEC.:3000K 90	DIM.:	SERIAL No.:
MFR.: ASD Lighting Corp	SUR.:	Shielding Angle:

Table--1

UNIT: cd

C (DEG) □ (DEG)	0	22.5	45	67.5	90	112.5	135	157.5	180	202.5	225	247.5	270	292.5	315	337.5			
0	1170	1170	1170	1170	1170	1170	1170	1170	1170	1170	1170	1170	1170	1170	1170	1170			
5	1132	1138	1141	1143	1143	1144	1138	1133	1120	1112	1111	1106	1108	1113	1121	1126			
10	983	986	983	985	997	1008	996	983	981	981	983	966	960	963	977	982			
15	758	782	784	758	738	765	758	752	764	760	758	755	756	750	768	764			
20	521	573	578	525	480	515	512	512	526	507	501	513	534	524	542	526			
25	317	371	366	320	277	301	298	302	315	292	293	302	337	332	346	326			
30	143	171	162	139	115	119	114	117	122	120	133	143	167	162	169	154			
35	54.6	62.7	60.2	53.3	48.5	50.7	50.2	49.4	49.5	50.8	55.4	57.1	64.0	63.4	64.8	59.3			
40	31.5	32.9	32.0	31.3	30.3	30.6	30.6	30.9	31.1	31.1	32.2	33.1	34.4	34.2	34.4	32.6			
45	22.6	22.4	22.1	22.1	22.1	22.4	22.6	22.9	23.2	23.3	23.5	23.5	23.5	23.5	23.4	22.9			
50	17.3	17.1	16.9	17.0	16.9	17.1	17.2	17.7	18.0	18.1	18.3	18.3	18.4	18.3	18.2	17.7			
55	12.2	12.1	12.0	12.1	12.1	12.3	12.3	12.6	12.8	12.9	13.0	13.0	13.0	12.8	12.8	12.4			
60	9.17	9.07	9.02	9.12	9.23	9.42	9.58	9.76	9.95	9.98	9.98	9.91	9.85	9.70	9.56	9.33			
65	6.67	6.59	6.58	6.68	6.81	7.00	7.14	7.31	7.47	7.50	7.50	7.40	7.32	7.15	7.00	6.79			
70	4.70	4.65	4.64	4.73	4.84	5.00	5.12	5.26	5.40	5.46	5.45	5.36	5.28	5.13	4.99	4.81			
75	3.16	3.11	3.09	3.16	3.24	3.36	3.46	3.59	3.72	3.77	3.79	3.72	3.65	3.52	3.39	3.24			
80	1.91	1.86	1.84	1.87	1.92	2.01	2.10	2.21	2.33	2.39	2.43	2.37	2.32	2.21	2.12	1.99			
85	0.32	0.90	0.85	0.82	0.81	0.86	0.97	1.10	0.38	1.24	1.12	1.01	0.94	0.94	0.98	1.01			
90	0.01	0.01	0.01	0.01	0.01	0.01	0.01	0.01	0.01	0.02	0.01	0.01	0.02	0.01	0.02	0.02			

C Range: 0 - 360DEG
 C Interval: 22.5DEG
 Test Speed: HIGH
 Temperature:25.3DEG
 Operators:
 Test Date:2021-10-20

□ Range: 0 - 90DEG
 □ Interval: 1.0DEG
 Test System:EVERFINE GO-SPEX500_V1 SYSTEM V2.00.421
 Humidity:65.0%
 Test Distance:3.080m [K=1.0000]
 Remarks: