



LED BACK-LIT FLAT PANEL

► **DESIGN** - LED BACK-LIT FLAT PANEL comes with a durable commercial grade housing resistant to rust and impact, anti-corrosion aluminum seamless rigid frame, anti-glare PC lens, and 0-10V dimmable driver with circuit overload, short circuit, and low-voltage protection, making it both safe and reliable. It is designed to operate on 120-277V circuits with a 0-10V dimmable driver.

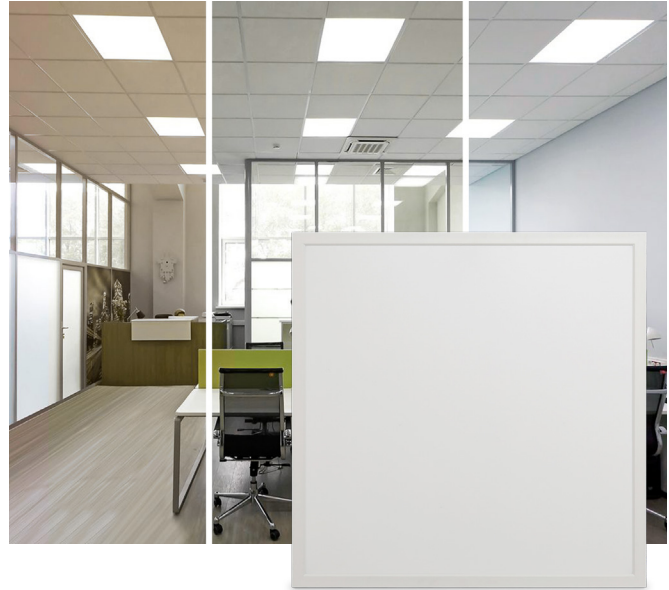
► **COLOR AND POWER SELECTABLE** - You can choose either a 3,500K neutral white, 4,000K cool white or 5,000K daylight color temperature and change the power with a simple switch.

► **INSTALLATION** - This fixture has three different mounting options: recessed, suspended, and surface.

► **APPLICATION** - Perfect commercial or industrial solution for offices, hospitals, schools, retail, workshops, and many other applications. It is also Damp Locations rated.

► **ADVANTAGES** - With calculated lifespan up to 158,000 hours, these fixtures are made to last decades under normal operation! ASD provides a 5-year limited warranty along with UL and DLC Premium certifications to guarantee top quality products and safety!

<i>Catalog number</i>	
<i>Notes</i>	
<i>Type</i>	



Model	Type	Watts	Voltage	Dimmable	Lumens	CCT	Finish	Dimensions (LxWxH)
ASD-BLP-22A40-6P	2x2	40/30/25W	120-277 V	0-10 V	5,335 lm	3CCT (3,500/4,000/5,000 K)	White	23-3/4" x 23-3/4" x 1-7/16"
ASD-BLP-24A50-6P	2x4	50/40/30W	120-277 V	0-10 V	5,645 lm	3CCT (3,500/4,000/5,000 K)	White	47-3/4" x 23-3/4" x 1-7/16"

ORDERING INFORMATION

Model	UPC	Pcs. per carton	Carton size	Carton weight
ASD-BLP-22A40-6P	810128113847	6	25.8" x 11" x 25.8"	34.2 lbs
ASD-BLP-24A50-6P	810128113854	6	49.8" x 11" x 25.8"	67.2 lbs

ACCESSORIES:

Model	Description	UPC	Pcs. per carton	Carton size	Carton weight	GTIN 14
ASD-FELP22-L	Surface mounting low frame for 2x2 panels	819201021581	9	25.2" x 6.5" x 7.7"	28.8 lbs	10819201021588
ASD-FELP24-L	Surface mounting low frame for 2x4 panels	819201021598	9	48.8" x 5.9" x 7.7"	45.2 lbs	10819201021595
ASD-CHS4	Ceiling hanging set 39.37"	859961005148	50	10.4" x 10.4" x 7.7"	23.7 lbs	10859961005145

For most up-to-date spec sheets please refer to asd-lighting.com



LED BACK-LIT FLAT PANEL

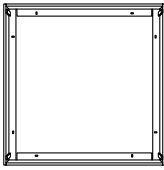
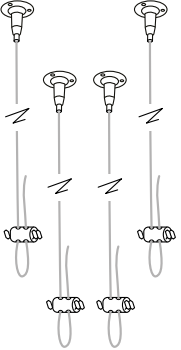
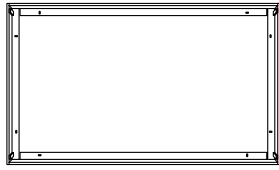
PRODUCT SPECIFICATIONS:

Construction & Materials		
Housing	Iron, PC, Aluminum	
Lens	PS	
Finish	White	
Weight	ASD-BLP-22A40-6P	28 lbs (12.7 kg)
	ASD-BLP-24A50-6P	58.6 lbs (26.6 kg)
Environmental system		
Work environment	Suitable for Damp Locations	
Operating temperature	-4°F to 113°F (-20°C to 45°C)	
L-70 Life	R >102,000 hrs; C > 158,000 hrs	
Optical system		
Luminous flux	ASD-BLP-22A40-6P	5,335 lm
	ASD-BLP-24A50-6P	5,645 lm
Color temperature	3CCT switch (3,500/4,000/5,000 K), 5,000 K by default	
CRI	> 80	
Electrical system		
Input voltage	120-277 V	
Max input current	ASD-BLP-22A40-6P	0.37 A
	ASD-BLP-24A50-6P	0.46 A
Inrush current (Action time)	50 A (6 S)	
Off state power	0W	
Power consumption	ASD-BLP-22A40-6P	40/30/25W
	ASD-BLP-24A50-6P	50/40/30W
Power factor	> 0.9	
Output voltage	42 V	
Max output current	ASD-BLP-22A40-6P	1 A
	ASD-BLP-24A50-6P	1.25 A
Surge protection DM/CM	1 kV / 2 kV	
Dimming compatible controls		
Brand	Leviton	Lutron
Models	IP710-LFZ	MS-Z101
Regular and voluntary certifications		
5-year limited warranty		
DesignLights Consortium (DLC) listed (Classification: Premium)		
UL certified		

PACKAGE CONTENTS:

Description	Q-ty
LED Back-Lit Flat Panel	6
Box	1

ACCESSORIES (sold separately):

<p>Surface mounting low frame for 2x2 panels ASD-FELP22-L</p> 	<p>Ceiling hanging set 39.37" ASD-CHS4</p> 
<p>for 2x4 panels ASD-FELP24-L</p> 	

ACCESSORY COMPATIBILITY LIST:

Accessories	Surface mounting low frame for 2x2 panels ASD-FELP22-L	Surface mounting low frame for 2x4 panels ASD-FELP24-L	Ceiling hanging set 39.37" ASD-CHS4
Models			
ASD-BLP-22A40-6P	•		
ASD-BLP-24A50-6P		•	

For most up-to-date spec sheets please refer to asd-lighting.com



LED BACK-LIT FLAT PANEL

INSTALLATION GUIDE

IMPORTANT SAFETY INFORMATION:

Please read all the instructions below before installation.

- ▶ Make sure that the supply voltage corresponds to the rated product voltage.
- ▶ The product must be installed by a qualified electrician in accordance with the National Electrical Code and corresponding local codes.
- ▶ If the product is damaged, do not use it.

⚠ WARNING

RISK OF PERSONAL INJURY – READ and follow all WARNINGS and installation instructions. Keep or give to the owner for future reference.

Risk of cuts: Wear gloves to prevent cuts or abrasions when removing from carton, handling, installing, and maintaining this product.

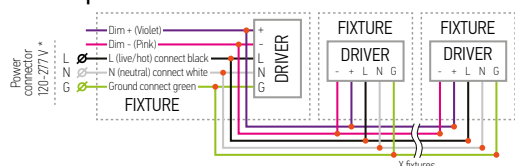
Risk of electric shock: This product must be installed in accordance with the applicable installation code by a person familiar with the construction and operation of the product and the hazards involved.

Risk of Fire: Minimum 194°F supply conductors. Consult a qualified electrician to ensure correct branch circuit conductor.

ASD® assumes no responsibility for claims arising out of improper or careless installation or handling of this product.

ELECTRICAL SCHEMATIC DIAGRAM:

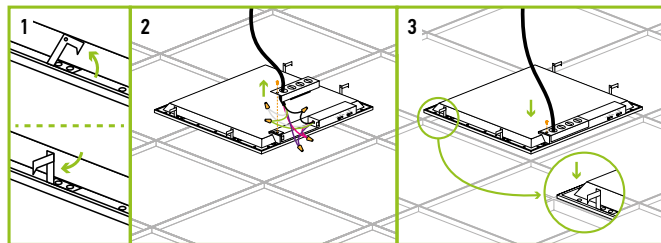
BLP multiple fixture connection



Linking limits: up to 20 panels can be linked together. Total power of LED Panels shall not exceed the wattage of dimmer.

RECESSED MOUNT:

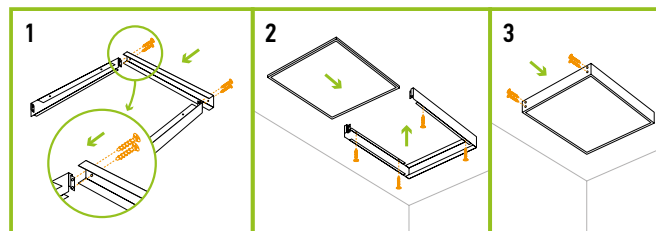
1. Lift all mounting clips along the edges of the panel. Turn the mounting clip head.
2. Remove the knockout hole on box with a screwdriver, remove screw and take out the driver cover. Connect the wires inside the driver box: Black to Black, White to White, Green to Green.
3. Cover the driver box and tighten it with a screwdriver, finish connection.



SURFACE MOUNT

ASD-FELP22-L ASD-FELP24-L sold separately:

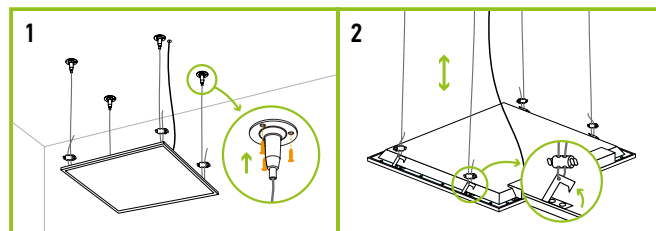
1. Connect 3 pieces of the frame to the ceiling using four screws.
2. Connect the panel wires as shown in electrical schematic diagram and insert panel into frame.
3. Attach the fourth piece and secure with screws. Power on to ensure installation is complete.



* Must remove earthquake hook before installing surface mount frame.

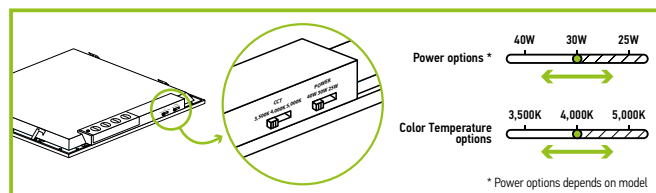
SUSPENDED MOUNT **ASD-CHS4** sold separately:

1. Insert the wall plugs (not included) into the ceiling and secure the cable to the ceiling.
2. Lock the suspension cable to the clip. Adjust the cable length to meet the height requirements. Attach the cable to the ceiling.



* For 2x4 installation please use 2 pcs of Ceiling Hanging set.

POWER AND COLOR TEMPERATURE SETTINGS:



For most up-to-date spec sheets please refer to asd-lighting.com