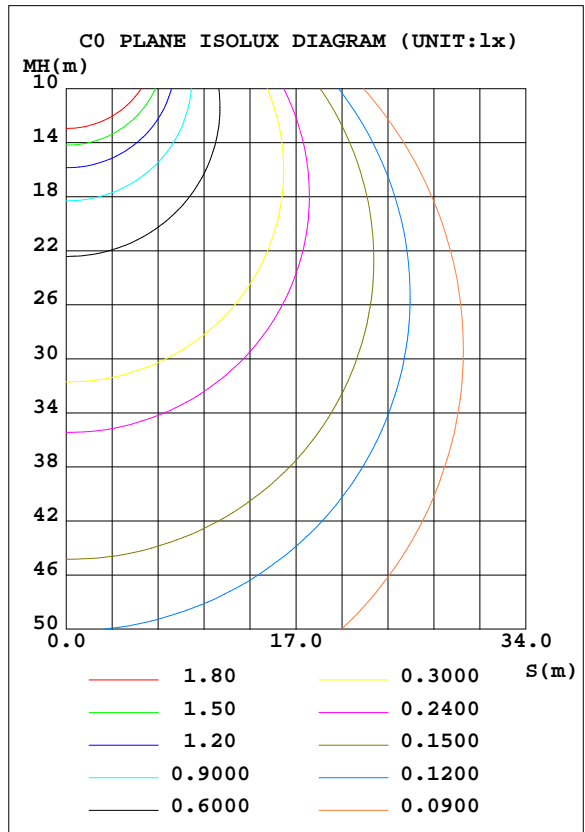
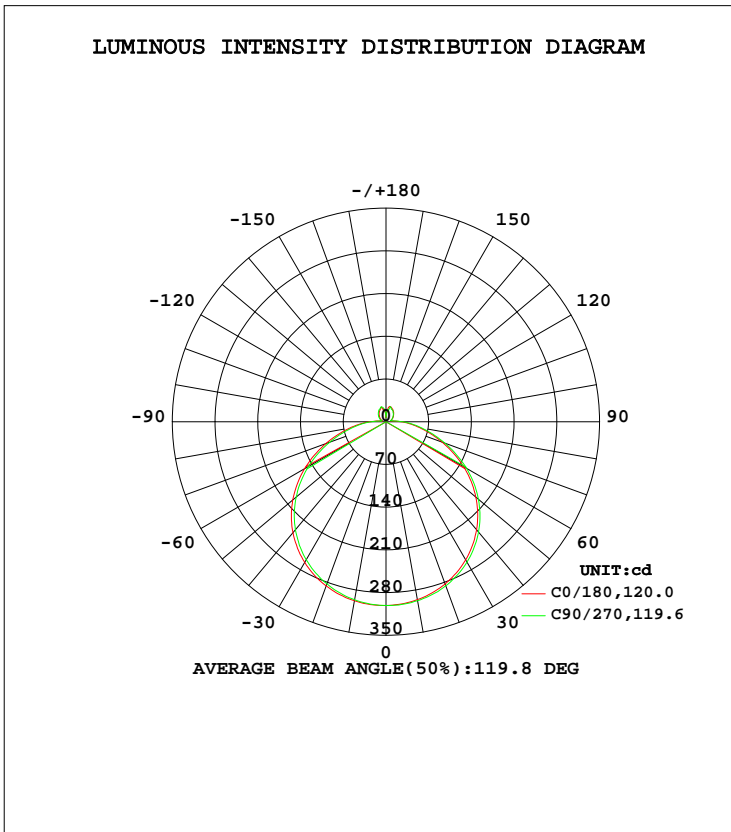


LUMINAIRE PHOTOMETRIC TEST REPORT

Test:U:120.0V I:0.1411A P:15.69W PF:0.9266 Lamp Flux:1061.81x1 lm		
NAME: ASD-LFMMR-11D16CC-NK 3000K	TYPE:N/A	WEIGHT:N/A
SPEC.:N/A	DIM.: N/A	SERIAL No.:N/A
MFR.: ASD Lighting corp	SUR.:N/A	Shielding Angle:N/A

DATA OF LAMP		PHOTOMETRIC DATA Eff: 67.70 lm/W			
MODEL	PSZ2S220516006-10	Imax(cd)	301.4	S/MH(C0/180)	1.29
NOMINAL POWER(W)		LOR(%)	100.0	S/MH(C90/270)	1.31
RATED VOLTAGE(V)	120	TOTAL FLUX(lm)	1061.8	η UP, DN(C0-180)	4.4,45.4
NOMINAL FLUX(lm)	1061.81	CIE CLASS	DIRECT	η UP, DN(C180-360)	4.5,45.7
LAMPS INSIDE	1	η up(%)	8.9	CIBSE SHR NOM	1.50
TEST VOLTAGE(V)	120	η down(%)	91.1	CIBSE SHR MAX	1.50



C Range: 0 - 360DEG
 C Interval: 22.5DEG
 Test Speed: HIGH
 Temperature:25.6DEG
 Operators:Carl
 Test Date:2022-05-22

γ Range: 0 - 180DEG
 γ Interval: 1.0DEG
 Test System:EVERFINE GO-R5000_V2 SYSTEM V2.0.351
 Humidity:51%
 Test Distance:2.526m [K=1.0000]
 Remarks:

ZONAL FLUX DIAGRAM

ZONAL FLUX DIAGRAM:

γ	C0	C45	C90	C135	C180	C225	C270	C315	γ	Φ zone	Φ total	%lum,lamp
10	297.8	297.2	296.3	295.9	296.0	297.0	297.7	298.1	0- 10	28.55	28.55	2.69,2.69
20	286.5	284.7	282.8	282.9	282.9	284.9	286.1	286.3	10- 20	82.45	111.0	10.5,10.5
30	266.3	263.7	261.2	261.1	261.2	263.7	265.7	265.7	20- 30	126.9	237.9	22.4,22.4
40	237.2	234.3	230.9	230.7	231.0	233.7	235.9	236.1	30- 40	156.3	394.2	37.1,37.1
50	199.6	196.1	192.2	192.3	192.2	195.4	197.7	197.8	40- 50	166.3	560.4	52.8,52.8
60	154.1	150.7	146.7	146.9	146.9	150.2	152.4	152.5	50- 60	155.0	715.4	67.4,67.4
70	104.9	101.8	98.14	98.40	97.95	100.8	102.7	102.9	60- 70	124.1	839.5	79.1,79.1
80	60.81	58.20	55.57	56.08	55.81	58.18	59.72	59.56	70- 80	82.91	922.4	86.9,86.9
90	27.29	25.98	24.83	25.16	25.17	27.08	27.74	26.71	80- 90	44.97	967.3	91.1,91.1
100	7.876	7.753	8.058	8.697	8.594	9.296	9.214	8.540	90-100	17.24	984.6	92.7,92.7
110	7.967	8.199	9.230	9.603	9.778	9.422	9.615	9.464	100-110	8.359	992.9	93.5,93.5
120	11.12	12.06	12.88	12.81	13.10	12.41	12.54	12.75	110-120	10.71	1004	94.5,94.5
130	14.35	15.83	16.33	15.74	16.30	15.41	15.53	15.95	120-130	12.61	1016	95.7,95.7
140	17.60	19.34	19.61	18.67	19.66	18.79	18.68	19.50	130-140	13.38	1030	97,97
150	20.92	23.01	22.75	21.66	22.75	22.15	22.12	22.58	140-150	12.95	1043	98.2,98.2
160	24.54	25.25	25.41	23.49	25.30	24.10	24.52	24.92	150-160	10.72	1053	99.2,99.2
170	21.17	22.30	22.06	21.44	23.81	22.98	20.01	23.04	160-170	6.764	1060	99.8,99.8
180	6.875	5.470	6.157	6.924	8.171	8.511	8.768	8.854	170-180	1.734	1062	100,100
DEG	LUMINOUS INTENSITY:cd									UNIT:lm		

Conical surface Flux(90deg): 477.37 lm

%lum = 45.0%

%lamp = 45.0%

Conical surface Flux(120deg): 715.38 lm

%lum = 67.4%

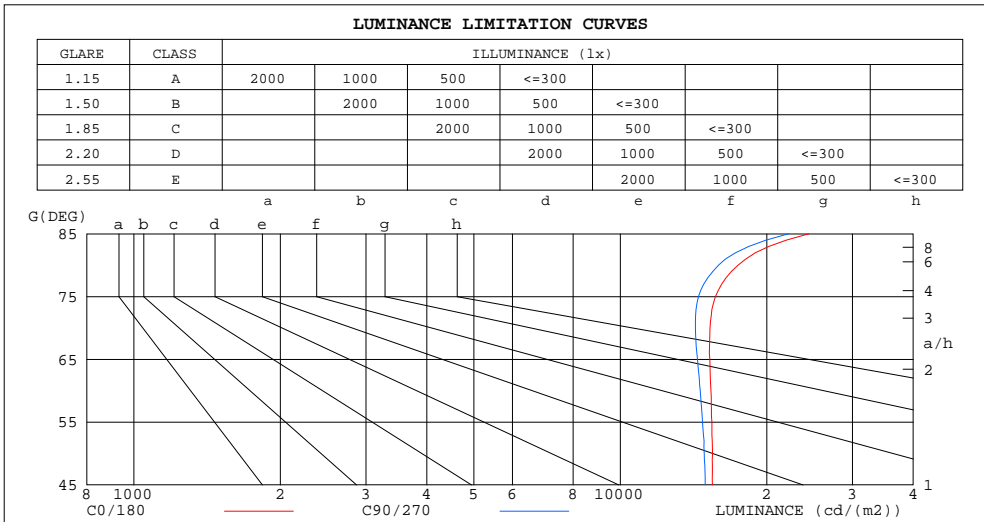
%lamp = 67.4%

C Range: 0 - 360DEG
 C Interval: 22.5DEG
 Test Speed: HIGH
 Temperature:25.6DEG
 Operators:Carl
 Test Date:2022-05-22

γ Range: 0 - 180DEG
 γ Interval: 1.0DEG
 Test System:EVERFINE GO-R5000_V2 SYSTEM V2.0.351
 Humidity:51%
 Test Distance:2.526m [K=1.0000]
 Remarks:

LUMINANCE LIMITATION CURVES

Test:U:120.0V I:0.1411A P:15.69W PF:0.9266 Lamp Flux:1061.81x1 lm		
NAME: ASD-LFMMR-11D16CC-NK 3000K	TYPE:N/A	WEIGHT:N/A
SPEC.:N/A	DIM.: N/A	SERIAL No.:N/A
MFR.: ASD Lighting corp	SUR.:N/A	Shielding Angle:N/A



LUMINANCE cd/(m2)		
G(DEG)	C0/180	C90/270
85	24390	22159
80	17448	15919
75	15685	14474
70	15281	14272
65	15273	14405
60	15358	14596
55	15426	14752
50	15470	14874
45	15456	14947

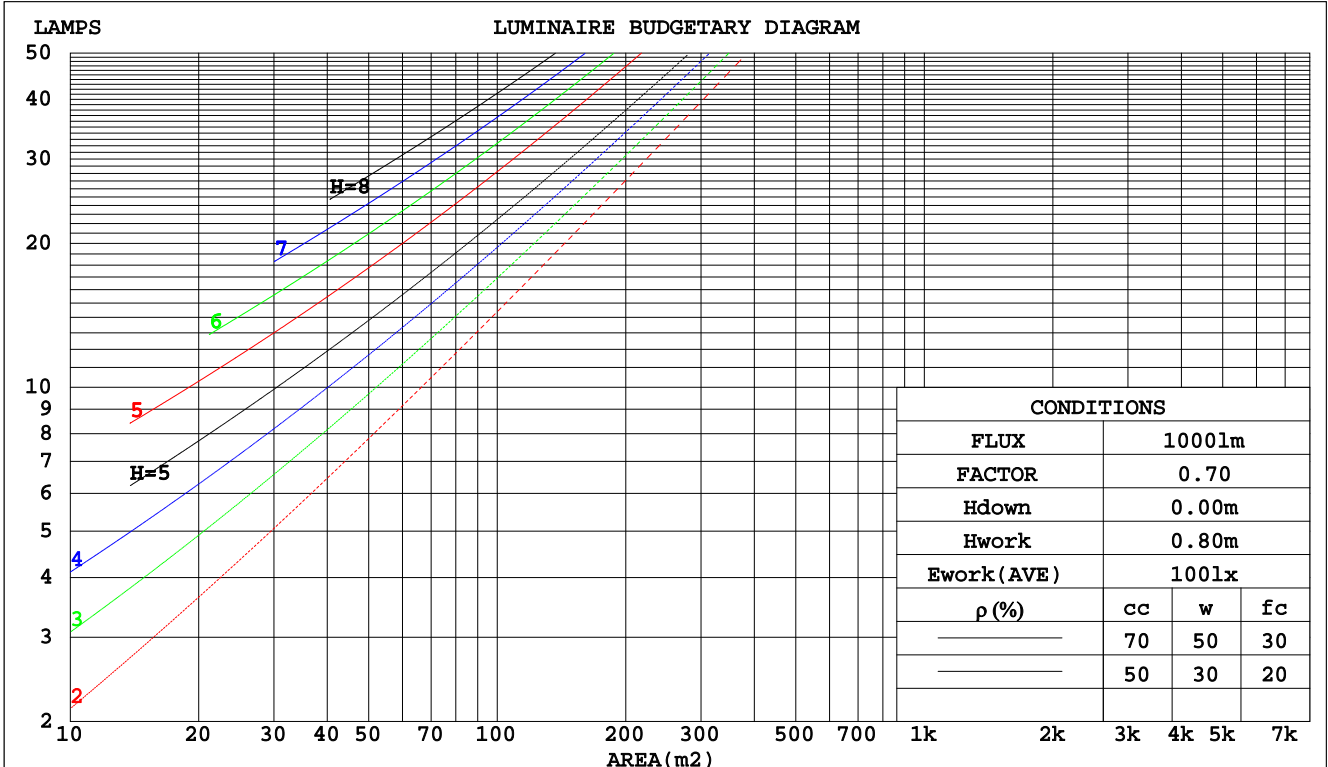
C Range: 0 - 360DEG
 C Interval: 22.5DEG
 Test Speed: HIGH
 Temperature:25.6DEG
 Operators:Carl
 Test Date:2022-05-22

γ Range: 0 - 180DEG
 γ Interval: 1.0DEG
 Test System:EVERFINE GO-R5000_V2 SYSTEM V2.0.351
 Humidity:51%
 Test Distance:2.526m [K=1.0000]
 Remarks:

CU AND LUMINAIRE BUDGETARY ESTIMATE DIAGRAM

Test:U:120.0V I:0.1411A P:15.69W PF:0.9266 Lamp Flux:1061.81x1 lm		
NAME: ASD-LFMMR-11D16CC-NK 3000K	TYPE:N/A	WEIGHT:N/A
SPEC.:N/A	DIM.: N/A	SERIAL No.:N/A
MFR.: ASD Lighting corp	SUR.:N/A	Shielding Angle:N/A

pcc	80%			70%			50%			30%			10%			0
	50%	30%	10%	50%	30%	10%	50%	30%	10%	50%	30%	10%	50%	30%	10%	0
pw																0
pfc	20%			20%			20%			20%			20%			0
RCR	RCR:Room Cavity Ratio Coefficients of Utilization(CU)															
0.0	1.17	1.17	1.17	1.13	1.13	1.13	1.06	1.06	1.06	.00	.00	.00	.94	.94	.94	.91
1.0	1.00	.95	.91	.97	.93	.89	.91	.88	.84	.86	.83	.80	.81	.78	.76	.74
2.0	.87	.79	.73	.84	.77	.72	.79	.73	.69	.74	.70	.66	.70	.66	.63	.60
3.0	.76	.67	.60	.73	.65	.59	.69	.62	.57	.65	.59	.55	.61	.57	.53	.50
4.0	.67	.58	.51	.65	.56	.50	.61	.54	.48	.58	.52	.47	.54	.49	.45	.42
5.0	.59	.50	.43	.58	.49	.43	.55	.47	.41	.52	.45	.40	.49	.43	.39	.36
6.0	.53	.44	.38	.52	.43	.37	.49	.42	.36	.47	.40	.35	.44	.38	.34	.32
7.0	.48	.39	.33	.47	.39	.33	.45	.37	.32	.42	.36	.31	.40	.34	.30	.28
8.0	.44	.35	.29	.43	.35	.29	.41	.33	.28	.39	.32	.28	.37	.31	.27	.25
9.0	.40	.32	.26	.39	.31	.26	.37	.30	.25	.36	.29	.25	.34	.28	.24	.22
10.0	.37	.29	.24	.36	.29	.23	.35	.28	.23	.33	.27	.22	.32	.26	.22	.20



C Range: 0 - 360DEG
 C Interval: 22.5DEG
 Test Speed: HIGH
 Temperature:25.6DEG
 Operators:Carl
 Test Date:2022-05-22

γ Range: 0 - 180DEG
 γ Interval: 1.0DEG
 Test System:EVERFINE GO-R5000_V2 SYSTEM V2.0.351
 Humidity:51%
 Test Distance:2.526m [K=1.0000]
 Remarks:

WEC AND CCEC

Test:U:120.0V I:0.1411A P:15.69W PF:0.9266 Lamp Flux:1061.81x1 lm		
NAME: ASD-LFMMR-11D16CC-NK 3000K	TYPE:N/A	WEIGHT:N/A
SPEC.:N/A	DIM.: N/A	SERIAL No.:N/A
MFR.: ASD Lighting corp	SUR.:N/A	Shielding Angle:N/A

ρcc	80%			70%			50%			30%			10%			0
ρw	50%	30%	10%	50%	30%	10%	50%	30%	10%	50%	30%	10%	50%	30%	10%	0
ρfc	20%			20%			20%			20%			20%			0
RCR	RCR:Room Cavity Ratio						Wall Exitance Coefficients(WEC)									
0.0																
1.0	.341	.194	.061	.331	.189	.060	.312	.179	.057	.295	.170	.055	.280	.162	.052	
2.0	.308	.169	.052	.300	.165	.051	.283	.157	.049	.268	.150	.047	.254	.144	.045	
3.0	.280	.149	.045	.272	.146	.044	.258	.140	.042	.244	.134	.041	.231	.128	.040	
4.0	.256	.133	.039	.249	.130	.039	.236	.125	.037	.223	.120	.036	.212	.115	.035	
5.0	.235	.120	.035	.229	.117	.034	.217	.113	.033	.205	.108	.032	.195	.104	.031	
6.0	.217	.109	.031	.211	.107	.031	.200	.103	.030	.190	.099	.029	.181	.095	.028	
7.0	.201	.099	.028	.196	.098	.028	.186	.094	.027	.177	.091	.026	.168	.087	.026	
8.0	.187	.092	.026	.183	.090	.025	.174	.087	.025	.165	.084	.024	.157	.081	.024	
9.0	.175	.085	.024	.171	.083	.023	.163	.080	.023	.155	.078	.022	.148	.075	.022	
10.0	.164	.079	.022	.160	.077	.022	.153	.075	.021	.146	.072	.021	.139	.070	.020	

ρcc	80%			70%			50%			30%			10%			0
ρw	50%	30%	10%	50%	30%	10%	50%	30%	10%	50%	30%	10%	50%	30%	10%	0
ρfc	20%			20%			20%			20%			20%			0
RCR	RCR:Room Cavity Ratio						Ceiling Cavity Exitance Coefficients(CCEC)									
0.0	.258	.258	.258	.221	.221	.221	.151	.151	.151	.087	.087	.087	.028	.028	.028	
1.0	.251	.224	.200	.215	.192	.172	.147	.132	.119	.084	.077	.069	.027	.025	.022	
2.0	.243	.201	.165	.208	.173	.142	.143	.119	.099	.082	.070	.058	.026	.022	.019	
3.0	.236	.184	.142	.202	.158	.123	.139	.110	.086	.080	.064	.051	.026	.021	.017	
4.0	.228	.171	.127	.196	.147	.110	.135	.103	.078	.078	.060	.046	.025	.020	.015	
5.0	.221	.160	.116	.189	.139	.101	.130	.097	.071	.076	.057	.042	.024	.019	.014	
6.0	.213	.152	.109	.183	.132	.095	.126	.092	.067	.073	.054	.040	.024	.018	.013	
7.0	.206	.146	.103	.178	.126	.090	.123	.088	.064	.071	.052	.038	.023	.017	.013	
8.0	.200	.140	.099	.172	.121	.086	.119	.085	.061	.069	.050	.036	.022	.016	.012	
9.0	.194	.135	.095	.167	.117	.083	.116	.082	.059	.067	.049	.035	.022	.016	.012	
10.0	.188	.131	.093	.162	.114	.081	.112	.080	.058	.066	.047	.034	.021	.016	.011	

C Range: 0 - 360DEG
 C Interval: 22.5DEG
 Test Speed: HIGH
 Temperature:25.6DEG
 Operators:Carl
 Test Date:2022-05-22

γ Range: 0 - 180DEG
 γ Interval: 1.0DEG
 Test System:EVERFINE GO-R5000_V2 SYSTEM V2.0.351
 Humidity:51%
 Test Distance:2.526m [K=1.0000]
 Remarks:

UGR(Unified Glare Rating) Table

Test:U:120.0V I:0.1411A P:15.69W PF:0.9266 Lamp Flux:1061.81x1 lm										
NAME: ASD-LFMMR-11D16CC-NK 3000K					TYPE:N/A			WEIGHT:N/A		
SPEC.:N/A					DIM.: N/A			SERIAL No.:N/A		
MFR.: ASD Lighting corp					SUR.:N/A			Shielding Angle:N/A		
ceiling/cavity	0.7	0.7	0.5	0.5	0.3	0.7	0.7	0.5	0.5	0.3
walls	0.5	0.3	0.5	0.3	0.3	0.5	0.3	0.5	0.3	0.3
working plane	0.2	0.2	0.2	0.2	0.2	0.2	0.2	0.2	0.2	0.2
Room dimensions	Viewed crosswise					Viewed endwise				
x = 2H y = 2H	21.9	23.3	22.3	23.7	24.1	21.7	23.1	22.1	23.5	23.9
3H	23.7	25.0	24.1	25.4	25.8	23.4	24.7	23.8	25.1	25.5
4H	24.5	25.7	24.9	26.1	26.6	24.1	25.4	24.6	25.8	26.3
6H	25.2	26.4	25.7	26.8	27.3	24.9	26.0	25.3	26.5	26.9
8H	25.6	26.7	26.1	27.2	27.7	25.2	26.3	25.7	26.8	27.3
12H	26.0	27.1	26.5	27.5	28.0	25.6	26.7	26.0	27.1	27.6
4H 2H	22.5	23.8	23.0	24.2	24.6	22.4	23.6	22.8	24.0	24.5
3H	24.5	25.6	24.9	26.0	26.5	24.2	25.3	24.7	25.8	26.3
4H	25.4	26.4	25.9	26.9	27.4	25.1	26.2	25.6	26.6	27.2
6H	26.3	27.2	26.9	27.8	28.3	26.0	26.9	26.5	27.4	28.0
8H	26.8	27.6	27.4	28.2	28.7	26.4	27.3	27.0	27.8	28.4
12H	27.3	28.1	27.9	28.6	29.2	26.9	27.7	27.5	28.2	28.8
8H 4H	25.7	26.6	26.3	27.1	27.7	25.5	26.4	26.1	26.9	27.5
6H	26.9	27.6	27.5	28.2	28.8	26.6	27.3	27.2	27.9	28.5
8H	27.5	28.1	28.1	28.7	29.3	27.2	27.8	27.8	28.4	29.0
12H	28.2	28.7	28.8	29.3	30.0	27.8	28.4	28.4	29.0	29.6
12H 4H	25.8	26.6	26.3	27.1	27.7	25.6	26.3	26.1	26.9	27.5
6H	27.0	27.6	27.6	28.2	28.9	26.7	27.4	27.3	27.9	28.6
8H	27.7	28.2	28.3	28.8	29.5	27.4	27.9	28.0	28.5	29.2
Variations with the observer position at spacings:										
S = 1.0H	+ 0.1 / - 0.2					+ 0.1 / - 0.2				
1.5H	+ 0.2 / - 0.3					+ 0.2 / - 0.3				
2.0H	+ 0.1 / - 0.3					+ 0.1 / - 0.3				

CIE Pub.117 Corrected 1062 lm Total Lamp Luminous Flux.(8log(F/F0) = 0.2)

C Range: 0 - 360DEG
 C Interval: 22.5DEG
 Test Speed: HIGH
 Temperature:25.6DEG
 Operators:Carl
 Test Date:2022-05-22

γ Range: 0 - 180DEG
 γ Interval: 1.0DEG
 Test System:EVERFINE GO-R5000_V2 SYSTEM V2.0.351
 Humidity:51%
 Test Distance:2.526m [K=1.0000]
 Remarks:

UTILIZATION FACTORS TABLE

Test:U:120.0V I:0.1411A P:15.69W PF:0.9266 Lamp Flux:1061.81x1 lm		
NAME: ASD-LFMMR-11D16CC-NK 3000K	TYPE:N/A	WEIGHT:N/A
SPEC.:N/A	DIM.: N/A	SERIAL No.:N/A
MFR.: ASD Lighting corp	SUR.:N/A	Shielding Angle:N/A

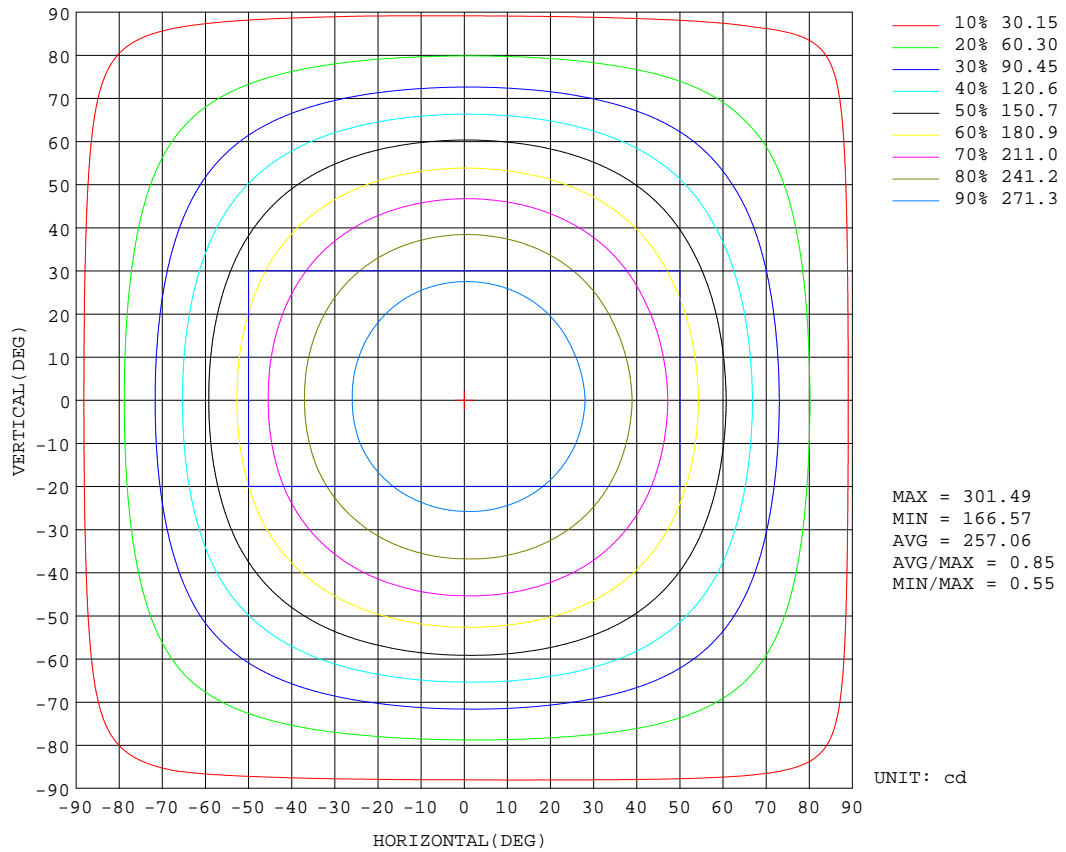
REFLECTANCE										
Ceiling	0.8	0.8	0.8	0.7	0.7	0.7	0.5	0.5	0.5	0
Walls	0.7	0.5	0.3	0.7	0.5	0.3	0.7	0.5	0.3	0
Working plane	0.2	0.2	0.2	0.2	0.2	0.2	0.2	0.2	0.2	0
ROOM INDEX	UTILIZATION FACTORS(PERCENT) $k(RI) \times RCR = 5$									
k = 0.60	53	41	34	52	41	34	50	40	33	27
0.80	63	51	43	61	50	43	59	49	42	34
1.00	71	59	51	69	58	51	66	59	50	42
1.25	78	67	59	76	66	58	72	63	57	48
1.50	83	72	65	81	71	64	77	68	62	53
2.00	90	81	73	88	79	72	83	76	70	60
2.50	94	86	79	91	84	77	86	80	75	64
3.00	98	90	84	95	88	82	89	84	79	68
4.00	102	96	90	99	93	88	93	88	84	73
5.00	105	99	94	101	96	92	95	91	88	76
ROOM INDEX	UF(total)									Direct
According to DIN EN 13032-2 2004			Suspended				SHRNOM = 1.25			

C Range: 0 - 360DEG
 C Interval: 22.5DEG
 Test Speed: HIGH
 Temperature:25.6DEG
 Operators:Carl
 Test Date:2022-05-22

γ Range: 0 - 180DEG
 γ Interval: 1.0DEG
 Test System:EVERFINE GO-R5000_V2 SYSTEM V2.0.351
 Humidity:51%
 Test Distance:2.526m [K=1.0000]
 Remarks:

ISOCANDELA DIAGRAM

Test:U:120.0V I:0.1411A P:15.69W PF:0.9266 Lamp Flux:1061.81x1 lm		
NAME: ASD-LFMMR-11D16CC-NK 3000K	TYPE:N/A	WEIGHT:N/A
SPEC.:N/A	DIM.: N/A	SERIAL No.:N/A
MFR.: ASD Lighting corp	SUR.:N/A	Shielding Angle:N/A

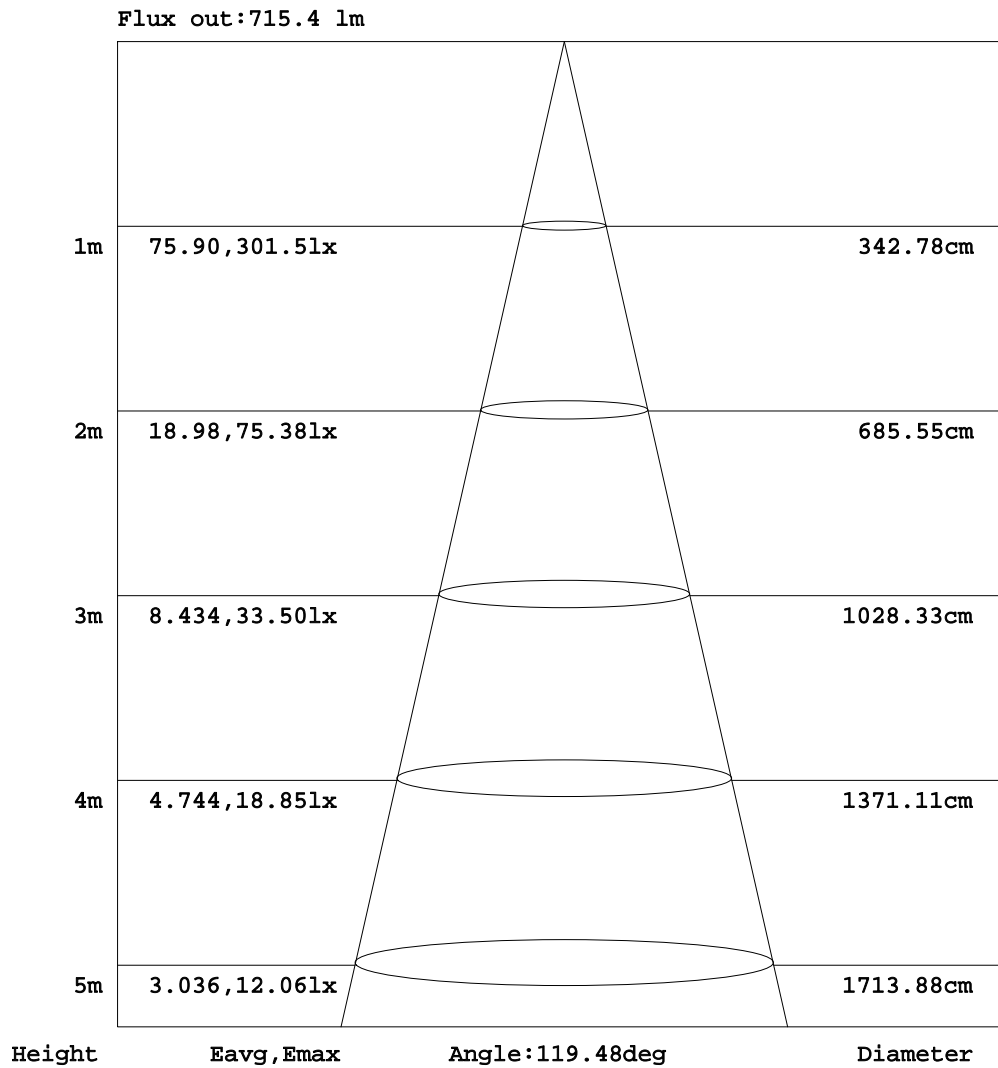


C Range: 0 - 360DEG
 C Interval: 22.5DEG
 Test Speed: HIGH
 Temperature:25.6DEG
 Operators:Carl
 Test Date:2022-05-22

γ Range: 0 - 180DEG
 γ Interval: 1.0DEG
 Test System:EVERFINE GO-R5000_V2 SYSTEM V2.0.351
 Humidity:51%
 Test Distance:2.526m [K=1.0000]
 Remarks:

AAI Figure

Test:U:120.0V I:0.1411A P:15.69W PF:0.9266 Lamp Flux:1061.81x1 lm		
NAME: ASD-LFMMR-11D16CC-NK 3000K	TYPE:N/A	WEIGHT:N/A
SPEC.:N/A	DIM.: N/A	SERIAL No.:N/A
MFR.: ASD Lighting corp	SUR.:N/A	Shielding Angle:N/A



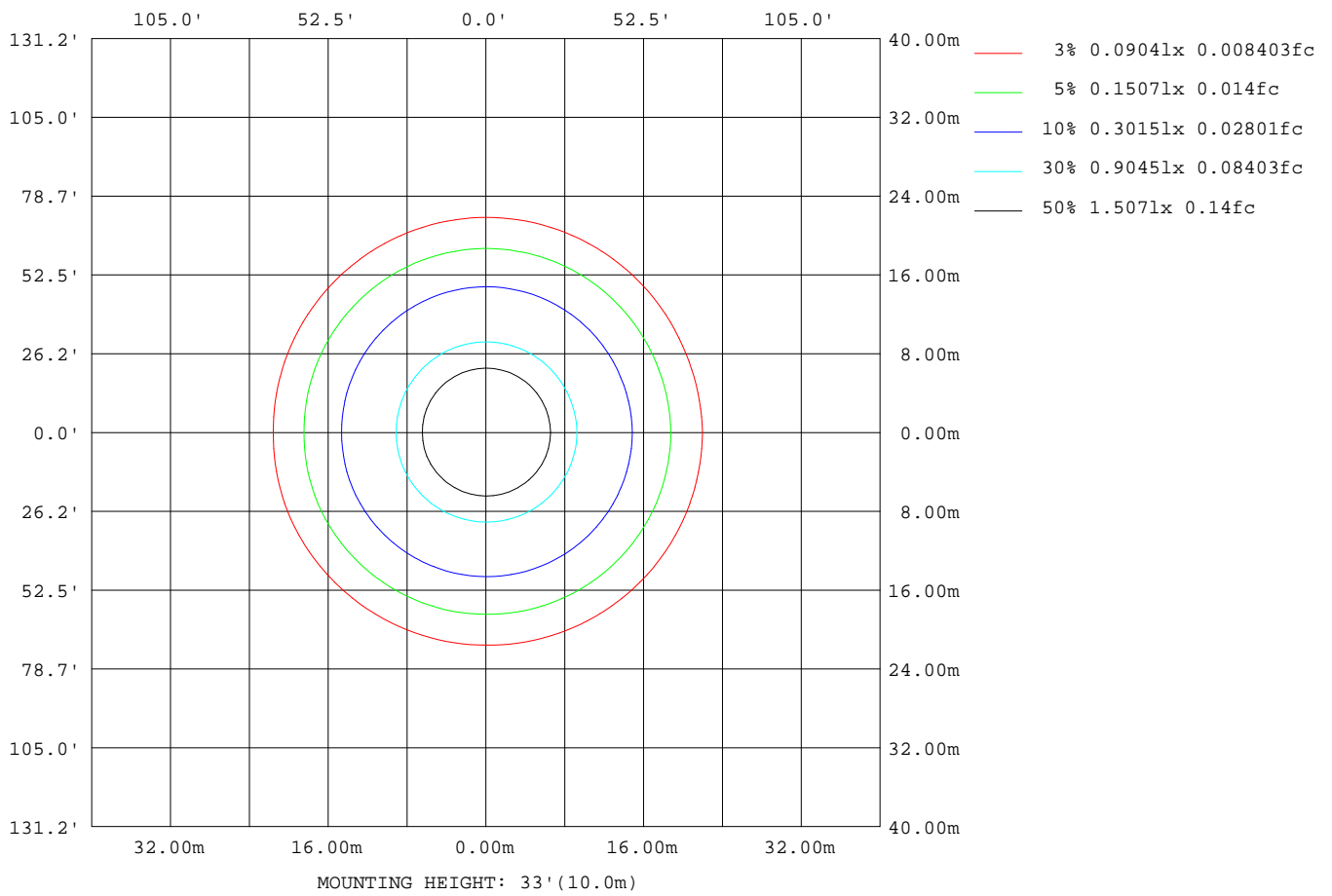
Note:The Curves indicate the illuminated area and the average illumination when the luminaire is at different distance.

C Range: 0 - 360DEG
 C Interval: 22.5DEG
 Test Speed: HIGH
 Temperature:25.6DEG
 Operators:Carl
 Test Date:2022-05-22

γ Range: 0 - 180DEG
 γ Interval: 1.0DEG
 Test System:EVERFINE GO-R5000_V2 SYSTEM V2.0.351
 Humidity:51%
 Test Distance:2.526m [K=1.0000]
 Remarks:

ISOLUX DIAGRAM

Test:U:120.0V I:0.1411A P:15.69W PF:0.9266 Lamp Flux:1061.81x1 lm		
NAME: ASD-LFMMR-11D16CC-NK 3000K	TYPE:N/A	WEIGHT:N/A
SPEC.:N/A	DIM.: N/A	SERIAL No.:N/A
MFR.: ASD Lighting corp	SUR.:N/A	Shielding Angle:N/A



C Range: 0 - 360DEG
 C Interval: 22.5DEG
 Test Speed: HIGH
 Temperature:25.6DEG
 Operators:Carl
 Test Date:2022-05-22

γ Range: 0 - 180DEG
 γ Interval: 1.0DEG
 Test System:EVERFINE GO-R5000_V2 SYSTEM V2.0.351
 Humidity:51%
 Test Distance:2.526m [K=1.0000]
 Remarks:

LED Avg.L Report

Test:U:120.0V I:0.1411A P:15.69W PF:0.9266 Lamp Flux:1061.81x1 lm		
NAME: ASD-LFMMR-11D16CC-NK 3000K	TYPE:N/A	WEIGHT:N/A
SPEC.:N/A	DIM.: N/A	SERIAL No.:N/A
MFR.: ASD Lighting corp	SUR.:N/A	Shielding Angle:N/A

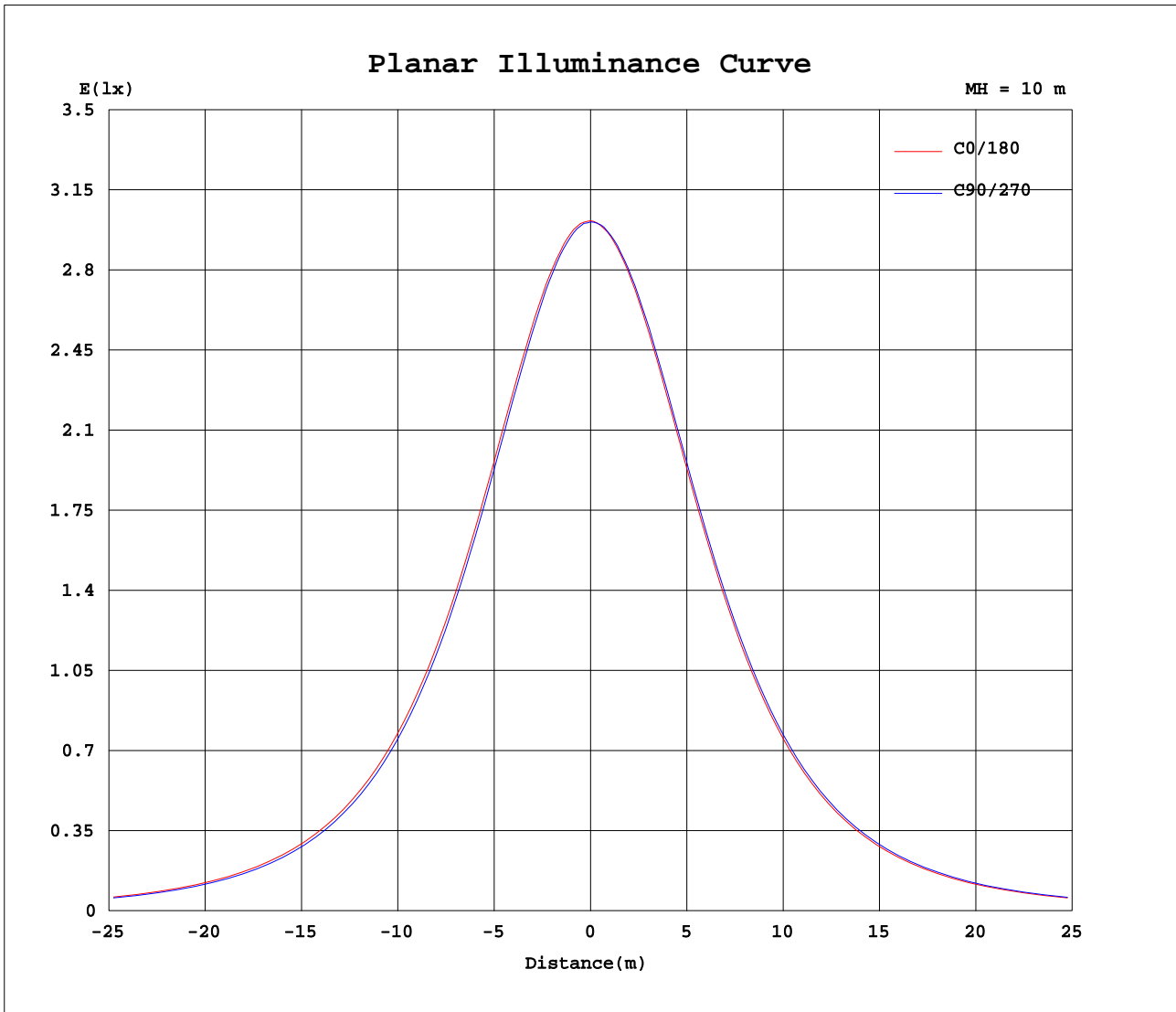
AvgL	cd/m2
L_0~180(65)av	14807
L_0~180(75)av	15100
L_0~180(85)av	23416
L_90~270(65)av	14696
L_90~270(75)av	14911
L_90~270(85)av	23262
L_45(65)av	14747
L_45(75)av	15006
L_45(85)av	23319

Standard: GB/T 29293-2012

C Range: 0 - 360DEG
C Interval: 22.5DEG
Test Speed: HIGH
Temperature:25.6DEG
Operators:Carl
Test Date:2022-05-22

γ Range: 0 - 180DEG
 γ Interval: 1.0DEG
Test System:EVERFINE GO-R5000_V2 SYSTEM V2.0.351
Humidity:51%
Test Distance:2.526m [K=1.0000]
Remarks:

Planar Illuminance Curve



C Range: 0 - 360DEG
 C Interval: 22.5DEG
 Test Speed: HIGH
 Temperature: 25.6DEG
 Operators: Carl
 Test Date: 2022-05-22

γ Range: 0 - 180DEG
 γ Interval: 1.0DEG
 Test System: EVERFINE GO-R5000_V2 SYSTEM V2.0.351
 Humidity: 51%
 Test Distance: 2.526m [K=1.0000]
 Remarks:

LUMINOUS DISTRIBUTION INTENSITY DATA

Test:U:120.0V I:0.1411A P:15.69W PF:0.9266 Lamp Flux:1061.81x1 lm		
NAME: ASD-LFMMR-11D16CC-NK 3000K	TYPE:N/A	WEIGHT:N/A
SPEC.:N/A	DIM.: N/A	SERIAL No.:N/A
MFR.: ASD Lighting corp	SUR.:N/A	Shielding Angle:N/A

Table--1

UNIT: cd

C(DEG)\ γ (DEG)	0	22.5	45	67.5	90	112.5	135	157.5	180	202.5	225	247.5	270	292.5	315	337.5			
0	301	301	301	301	301	301	301	301	301	301	301	301	301	301	301	301			
5	301	300	300	300	300	300	300	300	300	300	300	300	300	301	301	300			
10	298	298	297	296	296	296	296	296	296	297	297	297	298	298	298	298			
15	293	293	292	291	291	290	291	291	291	291	292	292	293	293	293	293			
20	287	286	285	283	283	282	283	283	283	284	285	285	286	286	286	286			
25	278	277	275	274	273	273	273	274	273	274	275	276	277	277	277	277			
30	266	265	264	262	261	261	261	262	261	263	264	264	266	266	266	266			
35	253	252	250	248	247	247	247	248	247	249	250	251	252	252	252	252			
40	237	236	234	232	231	230	231	232	231	233	234	235	236	236	236	236			
45	219	218	216	214	212	212	212	213	213	214	216	216	218	218	218	218			
50	200	198	196	194	192	192	192	193	192	194	195	197	198	198	198	198			
55	178	176	174	172	170	170	170	171	170	172	174	175	176	176	176	176			
60	154	153	151	148	147	146	147	148	147	149	150	151	152	153	152	152			
65	130	128	126	124	122	122	123	124	122	124	125	126	127	127	127	127			
70	105	104	102	99.5	98.1	97.8	98.4	99.6	98.0	99.5	101	102	103	103	103	102			
75	81.5	80.3	78.4	76.4	75.3	75.0	75.8	77.0	75.6	76.9	77.9	78.9	79.8	80.1	80.0	79.5			
80	60.8	59.6	58.2	56.4	55.6	55.5	56.1	57.0	55.8	57.1	58.2	59.2	59.7	59.9	59.6	59.1			
85	42.7	41.7	40.5	39.4	38.8	38.8	39.3	40.1	39.4	40.5	41.5	42.3	42.7	42.5	42.0	41.5			
90	27.3	26.7	26.0	25.2	24.8	24.9	25.2	25.8	25.2	26.2	27.1	27.8	27.7	27.3	26.7	26.2			
95	15.1	14.8	14.4	14.0	14.0	14.2	14.5	15.0	14.6	15.3	15.8	16.2	16.0	15.6	15.0	14.7			
100	7.88	7.76	7.75	7.75	8.06	8.42	8.70	8.90	8.59	9.00	9.30	9.40	9.21	8.94	8.54	7.89			
105	6.32	6.12	6.26	6.71	7.42	7.56	7.96	8.15	8.10	7.95	7.91	7.93	8.11	8.03	7.80	7.27			
110	7.97	7.93	8.20	8.63	9.23	9.12	9.60	9.86	9.78	9.57	9.42	9.32	9.61	9.58	9.46	9.03			
115	9.58	9.75	10.2	10.5	11.0	10.7	11.2	11.6	11.5	11.2	10.9	10.8	11.1	11.2	11.1	10.9			
120	11.1	11.5	12.1	12.3	12.9	12.2	12.8	13.3	13.1	12.8	12.4	12.2	12.5	12.6	12.7	12.7			
125	12.8	13.3	14.0	14.1	14.6	13.7	14.3	15.0	14.7	14.4	13.9	13.7	14.0	14.2	14.4	14.4			
130	14.3	14.9	15.8	15.7	16.3	15.2	15.7	16.6	16.3	15.9	15.4	15.2	15.5	15.9	16.0	16.1			
135	15.9	16.4	17.6	17.5	18.0	16.6	17.2	18.3	17.8	17.6	17.0	16.9	17.2	17.6	17.7	17.8			
140	17.6	18.0	19.3	19.2	19.6	18.1	18.7	20.0	19.7	19.3	18.8	18.7	18.7	19.4	19.5	19.6			
145	19.5	19.8	21.1	21.0	21.3	19.6	20.2	21.8	21.2	21.1	20.6	20.6	20.2	21.0	21.3	21.2			
150	20.9	21.2	23.0	22.6	22.8	21.1	21.7	23.1	22.8	21.8	22.2	21.9	22.1	22.8	22.6	22.8			
155	22.5	22.3	23.0	24.4	23.4	22.5	22.9	23.9	24.1	23.3	23.3	23.0	22.4	22.7	24.4	23.8			
160	24.5	23.4	25.3	25.6	25.4	24.0	23.5	22.8	25.3	24.8	24.1	23.3	24.5	21.2	24.9	25.6			
165	23.0	20.7	23.8	26.6	25.0	21.8	22.8	25.2	26.2	26.0	25.6	19.8	24.6	22.5	25.9	26.0			
170	21.2	21.9	22.3	24.0	22.1	22.2	21.4	23.3	23.8	23.9	23.0	20.6	20.0	21.1	23.0	23.4			
175	15.9	16.0	17.1	17.6	17.1	15.8	16.2	17.5	16.2	16.3	16.1	15.7	14.9	15.3	16.6	16.8			
180	6.88	5.64	5.47	5.52	6.16	6.33	6.92	6.31	8.17	8.44	8.51	8.50	8.77	8.92	8.85	8.57			

C Range: 0 - 360DEG
 C Interval: 22.5DEG
 Test Speed: HIGH
 Temperature:25.6DEG
 Operators:Carl
 Test Date:2022-05-22

γ Range: 0 - 180DEG
 γ Interval: 1.0DEG
 Test System:EVERFINE GO-R5000_V2 SYSTEM V2.0.351
 Humidity:51%
 Test Distance:2.526m [K=1.0000]
 Remarks: