



LED FULL CUTOFF WALLPACK

► **DESIGN** - LED FULL CUTOFF WALLPACK has a die-cast aluminum housing with excellent heat dissipation, anti-glare PC lens with even light distribution, and anti-leakage silicone gaskets. It is equipped with a removable hinge door for quick and easy installation and wiring. It is designed to operate on 120-277V circuits with a 0-10V dimmable driver.

► No visible light above a 90° angle, making it perfect for congested areas where light pollution may be an issue.

► **COLOR AND POWER SELECTABLE** - You can choose either a 3,000K warm white, 4,000K cool white or 5,000K daylight color temperature, and change the power with a simple switch.

► Surge protection 6kV protects the fixture from voltage spikes and current surges.

► **INSTALLATION** - The fixture can be mounted to a junction box or directly to a wall. Perfect commercial or industrial solution for outdoor security lighting, wall perimeter lighting, garages, large backyards, warehouses, hotels, and many other applications. It is also Wet Locations rated.

► **ADVANTAGES** - With calculated lifespan up to 144,000 hours, these fixtures are made to last decades under normal operation! ASD provides a 5-year limited warranty along with UL and DLC Premium certifications to guarantee top quality products and safety!

| | |
|----------------|--|
| Catalog number | |
| Notes | |
| Type | |



| Model | Watts | Voltage | Dimmable | Lumens | CCT | Finish | Dimensions (LxWxH) |
|----------------------|-------------|-----------|----------|-------------------------|----------------------------|--------|-----------------------------|
| ASD-WLP03-50D50-BZ | 50W | 120-277 V | 0-10 V | 6,800 lm | 5,000 K | Bronze | 14-3/16" x 9-1/4" x 6-9/16" |
| ASD-WLP03-A50DAC-BR | 30/40/50W | 120-277 V | 0-10 V | 4,366/5,592/6,723 lm | 3CCT (3,000/4,000/5,000 K) | Bronze | 14-3/16" x 9-1/4" x 6-9/16" |
| ASD-WLP03-80D50-BZ | 80W | 120-277 V | 0-10 V | 10,880 lm | 5,000 K | Bronze | 14-3/16" x 9-1/4" x 6-9/16" |
| ASD-WLP03-A80DAC-BR | 50/60/80W | 120-277 V | 0-10 V | 7,197/8,394/10,208 lm | 3CCT (3,000/4,000/5,000 K) | Bronze | 14-3/16" x 9-1/4" x 6-9/16" |
| ASD-WLP03-120D50-BZ | 120W | 120-277 V | 0-10 V | 16,320 lm | 5,000 K | Bronze | 14-3/16" x 9-1/4" x 6-9/16" |
| ASD-WLP03-A120DAC-BR | 80/100/120W | 120-277 V | 0-10 V | 11,642/13,680/16,198 lm | 3CCT (3,000/4,000/5,000 K) | Bronze | 14-3/16" x 9-1/4" x 6-9/16" |

ORDERING INFORMATION

| Model | UPC | Pcs. per carton | Carton size | Carton weight | GTIN 14 |
|----------------------|--------------|-----------------|---------------------|---------------|----------------|
| ASD-WLP03-50D50-BZ | 810050736329 | 4 | 21.9" x 16.3" x 16" | 27.3 lbs | 10810050736326 |
| ASD-WLP03-A50DAC-BR | 810128111133 | 4 | 21.9" x 16.3" x 16" | 28.2 lbs | 10810128111130 |
| ASD-WLP03-80D50-BZ | 810050736336 | 4 | 21.9" x 16.3" x 16" | 30.9 lbs | 10810050736333 |
| ASD-WLP03-A80DAC-BR | 810128111126 | 4 | 21.9" x 16.3" x 16" | 32.5 lbs | 10810128111123 |
| ASD-WLP03-120D50-BZ | 810050736343 | 4 | 21.9" x 16.3" x 16" | 31.7 lbs | 10810050736340 |
| ASD-WLP03-A120DAC-BR | 810128111829 | 4 | 21.9" x 16.3" x 16" | 33.1 lbs | 10810128111826 |

ACCESSORIES:

| Model | Description | UPC | Pcs. per carton | Carton size | Carton weight | GTIN 14 |
|------------|-------------|--------------|-----------------|---------------------|---------------|----------------|
| ASD-PC-WLP | Photocell | 810050735773 | 100 | 5.1" x 4.1" x 10.2" | 1.1 lbs | 30810050735774 |

For most up-to-date spec sheets please refer to asd-lighting.com

ASD LIGHTING CORP

E-mail: orders@asd-lighting.com | Web site: www.asd-lighting.com





LED FULL CUTOFF WALLPACK

PRODUCT SPECIFICATIONS:

| Construction & Materials | | | Electrical system | | | |
|------------------------------------|---|---|---|------------------------|---|--------|
| Housing | Aluminum | | Input voltage | 120-277 V | | |
| Lens | PC | | Max input current | ASD-WLP03-50D50-BZ | 0.55 A | |
| Finish | Bronze | | | ASD-WLP03-A50DAC-BR | | |
| Weight | ASD-WLP03-50D50-BZ | 6.1 lbs (2.8 kg) | | ASD-WLP03-80D50-BZ | 0.80 A | |
| | ASD-WLP03-A50DAC-BR | 6.3 lbs (2.8 kg) | | ASD-WLP03-A80DAC-BR | | |
| | ASD-WLP03-80D50-BZ | 7.1 lbs (3.2 kg) | | ASD-WLP03-120D50-BZ | 1.05 A | |
| | ASD-WLP03-A80DAC-BR | 7.3 lbs (3.3 kg) | ASD-WLP03-A120DAC-BR | | | |
| | ASD-WLP03-120D50-BZ | | 7.5 lbs (3.4 kg) | | | |
| Environmental system | | | Inrush current (Action time) | 80 A (0.75 S) | | |
| Work environment | Suitable for Wet Locations, IP66 | | Off state power | 0W | | |
| Operating temperature | -40°F to 122°F (-40°C to 50°C) | | Power consumption | ASD-WLP03-50D50-BZ | 50W | |
| L-70 Life | R > 54,000 hrs; C > 144,000 hrs for AC models: R > 41,000 hrs; C > 137,000 hrs | | | ASD-WLP03-A50DAC-BR | 30/40/50W | |
| Optical system | | | | ASD-WLP03-80D50-BZ | 80W | |
| Luminous flux | ASD-WLP03-50D50-BZ | 6,800 lm | | ASD-WLP03-A80DAC-BR | 50/60/80W | |
| | ASD-WLP03-A50DAC-BR | 4,366/5,592/6,723 lm | | ASD-WLP03-120D50-BZ | 120W | |
| | ASD-WLP03-80D50-BZ | 10,880 lm | ASD-WLP03-A120DAC-BR | 80/100/120W | | |
| | ASD-WLP03-A80DAC-BR | 7,197/8,394/10,208 lm | Power factor | > 0.9 | | |
| | ASD-WLP03-120D50-BZ | 16,320 lm | Output voltage | 130 V | | |
| Color temperature | ASD-WLP03-A120DAC-BR | 11,642/13,680/16,198 lm | Max output current | ASD-WLP03-50D50-BZ | 0.39 A | |
| | 5,000 K | 3CCT switch (3,000/4,000/5,000 K), 5,000 K by default | | ASD-WLP03-A50DAC-BR | | |
| CRI | > 70 | | | for AC models: > 80 | ASD-WLP03-80D50-BZ | 0.62 A |
| Dimming compatible controls | | | | ASD-WLP03-A80DAC-BR | 0.92 A | |
| Brand | Models | | | ASD-WLP03-120D50-BZ | | |
| Maxxima | MEW-DM600LV | | ASD-WLP03-A120DAC-BR | Surge protection DM/CM | 4 kV / 6 kV for AC models: 4 kV / 4 kV | |
| Keygma | KGM-1A010V | | Regular and voluntary certifications | | | |
| Lutron | DVSTV-WH | | 5-year limited warranty | | | |
| Leviton | IP710-DLZ | | DesignLights Consortium (DLC) listed (Classification: Premium) | | | |
| Eaton | DF10P-C1 | | Main: Outdoor luminaires; General application: Mid/High output; | | | |
| | | | Primary use: Outdoor full-cutoff wall-mounted area luminaires. | | | |
| | | | UL certified E473804 | | | |

PACKAGE CONTENTS:

| Description | Q-ty |
|--------------------------|------|
| LED Full Cutoff Wallpack | 1 |
| Box | 1 |

ACCESSORIES (sold separately):



ACCESSORY COMPATIBILITY LIST:

| Accessories | Photocell ASD-PC-WLP |
|----------------------|----------------------|
| Models | |
| ASD-WLP03-50D50-BZ | • |
| ASD-WLP03-A50DAC-BR | • |
| ASD-WLP03-80D50-BZ | • |
| ASD-WLP03-A80DAC-BR | • |
| ASD-WLP03-120D50-BZ | • |
| ASD-WLP03-A120DAC-BR | • |

PHOTOCELL INFORMATION



The dusk-to-dawn photocell automatically turns the fixture off during daylight hours.

- The light is always ON when luminance is < 30 lux (2.8 fc) (night time)
- The light is always OFF when luminance is > 60 lux (5.6 fc) (day time)

For most up-to-date spec sheets please refer to asd-lighting.com



LED FULL CUTOFF WALLPACK

INSTALLATION GUIDE

IMPORTANT SAFETY INFORMATION:

Please read all the instructions below before installation.

- ▶ Make sure that the supply voltage corresponds to the rated product voltage.
- ▶ The product must be installed by a qualified electrician in accordance with the National Electrical Code and corresponding local codes.
- ▶ If the product is damaged, do not use it.

⚠ WARNING

RISK OF PERSONAL INJURY – READ and follow all WARNINGS and installation instructions.

Keep or give to the owner for future reference.

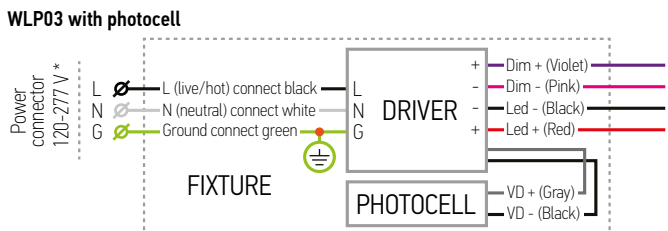
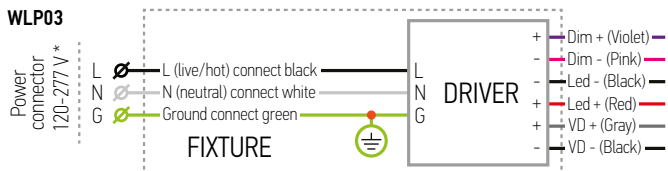
Risk of cuts: Wear gloves to prevent cuts or abrasions when removing from carton, handling, installing, and maintaining this product.

Risk of electric shock: This product must be installed in accordance with the applicable installation code by a person familiar with the construction and operation of the product and the hazards involved.

Risk of Fire: Minimum 194°F supply conductors. Consult a qualified electrician to ensure correct branch circuit conductor.

ASD® assumes no responsibility for claims arising out of improper or careless installation or handling of this product.

ELECTRICAL SCHEMATIC DIAGRAM:

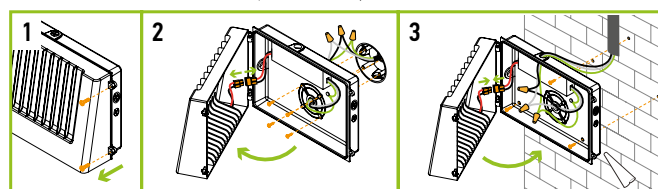


* The regular voltage 120-277V fixtures can be alternatively powered without neutral by two-phase circuit with phase-to-phase voltage of 208V (L1-120V & L2-120V).

WARNING: Phase-to-phase voltage should be less than 277V (160V per each phase) and more than 120V (70V per each phase)! Do not confuse Regular Voltage fixtures of 120-277V with High Voltage ones of 277-480V!

INSTALLATION STEPS:

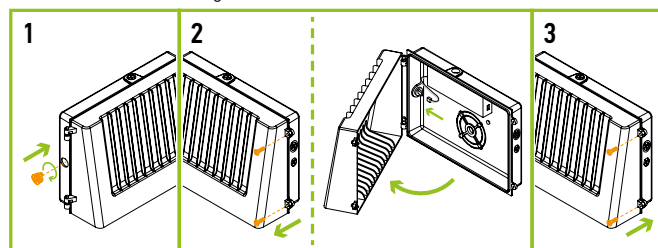
1. Use a screwdriver to loosen the screws securing the front cover and open the fixture.
2. **Junction box installation:** Drill the mounting holes and secure the fixture on the mounting surface (for more comfortable installation, disconnect red connector and remove the reflector from the back plate, affix backplate to the wall, and attach reflector to the backplate and connect red connector, after wiring will be complete), insert the power cord from junction box. Connect the wires: Black to Black, White to White, Green to Green. Close the front cover and tighten the screws.
3. **Wall installation:** Secure the fixture on the wall (for more comfortable installation, disconnect red connector and remove the reflector from the back plate, affix backplate to the wall, and attach reflector to the backplate and connect red connector, after wiring will be complete) and remove one of the side caps, insert the power cord. Connect the wires: Black to Black, White to White, Green to Green. Close the front cover and tighten the screws. For outdoor locations it is recommended to use silicone (not included).



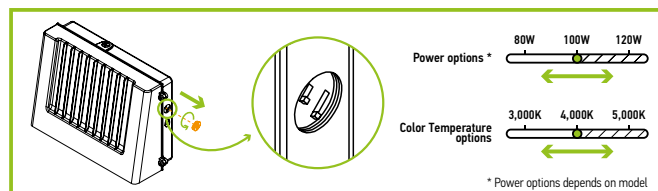
PHOTOCELL INSTALLATION ASD-PC-WLP

sold separately:

1. Remove the knockout on the side of the housing. Screw in the Photocell to the knockout hole.
2. Remove two screws on the side of the fixture, open the fixture, insert connector on black-grey wire to the photocell.
3. Close the fixture and tighten two screws back.



POWER AND COLOR TEMPERATURE SETTINGS FOR AC MODELS:



For most up-to-date spec sheets please refer to asd-lighting.com