



LED DOUBLE RING FLUSHMOUNT

► **DESIGN & OPTIONS** - LED DOUBLE RING FLUSHMOUNT has a modern, multipurpose design and a stylish look with efficient lighting. Modern LED dimmers provide smooth dimming capabilities ranging from 100% to 10%. You can choose either a 3000K, 4000K or 5000K color temperature and the 120° beam angle grants you smooth and even lighting. Models with 120-277V and color adjustable options are also available, you can choose either 3000K, 4000K or 5000K with a simple switch. It comes in five sizes: 10", 12", 14", 16", and 18" with either a BRONZE or BRUSHED NICKEL finish.

► **INSTALLATION** - Installation is quick and easy: just attach the mounting bracket to the outlet box, connect the wires and fix the lamp body on the mounting bracket. Screws, wire nuts and all installation accessories are provided. Refer to install instructions for detailed steps.

► **APPLICATION** - The LED DOUBLE RING FLUSHMOUNT provides bright, yet smooth lighting for your family room, bedroom, hallway, corridor, or any other common area in your living space. It can be used as an additional light to an already existing ceiling light as well. This fixture is also Damp location rated.

► **ENERGY SAVING & EFFICIENCY** - Replacing an incandescent fixture with LED DOUBLE RING FLUSHMOUNT can save you 8 times as much on your current energy costs. With a lifespan of 50,000 hours, these fixtures are made to last decades with normal operation! This fixture will save you a significant amount of money in its lifetime.

► **CERTIFICATION & WARRANTY** - Buy with confidence: ASD provides a 5-year warranty along with ETL and ENERGY STAR certifications to guarantee top quality products and safety!

Top US certifications allow participation in rebates; please check the rebate programs available in your state.

Catalog number	
Notes	
Type	



PRODUCT LEGEND:

Family	Voltage	Size	Dimmable	Watts	CCT	Finish
ASD-LFMDR	MV	XX	X	XX	XX	XX
LED Double Ring Flushmount	Blank = 120 V MV = 120-277 V	10 = 10 inch 12 = 12 inch 14 = 14 inch 16 = 16 inch 18 = 18 inch	D = Dimmable	15 = 15 W 16 = 16 W 20 = 20 W 21 = 21 W 24 = 24 W 28 = 28 W	30 = 3,000 K 40 = 4,000 K 50 = 5,000 K CC = 3,000/4,000/5,000 K	BZ = Oil Rubbed Bronze NK = Brushed Nickel

LED DOUBLE RING FLUSHMOUNT:

Model	Size	Watts	Voltage	Dimmable	CCT	Lumens	Finish	Dimensions (LxWxH)
ASD-LFMDR-12D1530-NK	12 inch	15 W	120 V	TRIAC	3,000 K	1,050 lm	Brushed Nickel	11 7/8" x 11 7/8" x 3 1/8"
ASD-LFMDR-12D1540-NK	12 inch	15 W	120 V	TRIAC	4,000 K	1,050 lm	Brushed Nickel	11 7/8" x 11 7/8" x 3 1/8"
ASD-LFMDR-12D1550-NK	12 inch	15 W	120 V	TRIAC	5,000 K	1,050 lm	Brushed Nickel	11 7/8" x 11 7/8" x 3 1/8"
ASD-LFMDR-12D1530-BZ	12 inch	15 W	120 V	TRIAC	3,000 K	1,050 lm	Oil Rubbed Bronze	11 7/8" x 11 7/8" x 3 1/8"
ASD-LFMDR-12D1540-BZ	12 inch	15 W	120 V	TRIAC	4,000 K	1,050 lm	Oil Rubbed Bronze	11 7/8" x 11 7/8" x 3 1/8"
ASD-LFMDR-12D1550-BZ	12 inch	15 W	120 V	TRIAC	5,000 K	1,050 lm	Oil Rubbed Bronze	11 7/8" x 11 7/8" x 3 1/8"
ASD-LFMDR-12D2030-NK	12 inch	20 W	120 V	TRIAC	3,000 K	1,400 lm	Brushed Nickel	11 7/8" x 11 7/8" x 3 1/8"
ASD-LFMDR-12D2040-NK	12 inch	20 W	120 V	TRIAC	4,000 K	1,400 lm	Brushed Nickel	11 7/8" x 11 7/8" x 3 1/8"
ASD-LFMDR-12D2050-NK	12 inch	20 W	120 V	TRIAC	5,000 K	1,400 lm	Brushed Nickel	11 7/8" x 11 7/8" x 3 1/8"
ASD-LFMDR-14D2130-NK	14 inch	21 W	120 V	TRIAC	3,000 K	1,470 lm	Brushed Nickel	13 3/4" x 13 3/4" x 3 1/2"
ASD-LFMDR-14D2140-NK	14 inch	21 W	120 V	TRIAC	4,000 K	1,470 lm	Brushed Nickel	13 3/4" x 13 3/4" x 3 1/2"
ASD-LFMDR-14D2150-NK	14 inch	21 W	120 V	TRIAC	5,000 K	1,470 lm	Brushed Nickel	13 3/4" x 13 3/4" x 3 1/2"
ASD-LFMDR-14D2130-BZ	14 inch	21 W	120 V	TRIAC	3,000 K	1,470 lm	Oil Rubbed Bronze	13 3/4" x 13 3/4" x 3 1/2"
ASD-LFMDR-14D2140-BZ	14 inch	21 W	120 V	TRIAC	4,000 K	1,470 lm	Oil Rubbed Bronze	13 3/4" x 13 3/4" x 3 1/2"
ASD-LFMDR-14D2150-BZ	14 inch	21 W	120 V	TRIAC	5,000 K	1,470 lm	Oil Rubbed Bronze	13 3/4" x 13 3/4" x 3 1/2"
ASD-LFMDR-10D16CC-NK	10 inch	16 W	120 V	TRIAC	3,000/4,000/5,000 K	1,150 lm	Brushed Nickel	10 3/8" x 10 3/8" x 3 1/2"
ASD-LFMDR-10D16CC-BZ	10 inch	16 W	120 V	TRIAC	3,000/4,000/5,000 K	1,150 lm	Oil Rubbed Bronze	10 3/8" x 10 3/8" x 3 1/2"
ASD-LFMDR-12D15CC-NK	12 inch	15 W	120 V	TRIAC	3,000/4,000/5,000 K	1,050 lm	Brushed Nickel	11 7/8" x 11 7/8" x 3 1/8"
ASD-LFMDR-12D20CC-NK	12 inch	20 W	120 V	TRIAC	3,000/4,000/5,000 K	1,400 lm	Brushed Nickel	11 7/8" x 11 7/8" x 3 1/8"
ASD-LFMDR-18D28CC-NK	18 inch	28 W	120 V	TRIAC	3,000/4,000/5,000 K	1,960 lm	Brushed Nickel	17 3/4" x 17 3/4" x 4"

For most up-to-date spec sheets please refer to asd-lighting.com



LED DOUBLE RING FLUSHMOUNT

Model	Size	Watts	Voltage	Dimmable	CCT	Lumens	Finish	Dimensions (LxWxH)
ASD-LFMDR-MV-12D15CC-NK	12 inch	15 W	120-277 V	TRIAC	3,000/4,000/5,000 K	1,050 lm	Brushed Nickel	11 7/8" x 11 7/8" x 3 1/8"
ASD-LFMDR-MV-12D20CC-NK	12 inch	20 W	120-277 V	TRIAC	3,000/4,000/5,000 K	1,400 lm	Brushed Nickel	11 7/8" x 11 7/8" x 3 1/8"
ASD-LFMDR-MV-14D21CC-NK	14 inch	21 W	120-277 V	TRIAC	3,000/4,000/5,000 K	1,500 lm	Brushed Nickel	13 3/4" x 13 3/4" x 3 1/2"
ASD-LFMDR-MV-16D24CC-NK	16 inch	24 W	120-277 V	TRIAC	3,000/4,000/5,000 K	1,680 lm	Brushed Nickel	15 3/4" x 15 3/4" x 3 7/8"
ASD-LFMDR-MV-16D24CC-BZ	16 inch	24 W	120-277 V	TRIAC	3,000/4,000/5,000 K	1,680 lm	Oil Rubbed Bronze	15 3/4" x 15 3/4" x 3 7/8"
ASD-LFMDR-MV-18D28CC-NK	18 inch	28 W	120-277 V	TRIAC	3,000/4,000/5,000 K	2,000 lm	Brushed Nickel	17 3/8" x 17 3/8" x 4"
ASD-LFMDR-MV-18D28CC-BZ	18 inch	28 W	120-277 V	TRIAC	3,000/4,000/5,000 K	2,000 lm	Oil Rubbed Bronze	17 3/8" x 17 3/8" x 4"

PRODUCT SPECIFICATIONS:

Construction & Materials							
Lens	White Acrylic						
Housing	Steel						
Finish Color	Brushed Nickel, Oil Rubbed Bronze						
Weight	ASD-LFMDR-12D1530-NK	1.7 lb (0.8 kg)	ASD-LFMDR-14D2140-NK	2.5 lb (1.1 kg)	ASD-LFMDR-MV-12D15CC-NK	1.7 lb (0.8 kg)	
	ASD-LFMDR-12D1540-NK		ASD-LFMDR-14D2150-NK		ASD-LFMDR-MV-12D20CC-NK		
	ASD-LFMDR-12D1550-NK		ASD-LFMDR-14D2130-BZ		ASD-LFMDR-MV-14D21CC-NK	2.5 lb (1.1 kg)	
	ASD-LFMDR-12D1530-BZ		ASD-LFMDR-14D2140-BZ		ASD-LFMDR-MV-16D24CC-NK	3 lb (1.4 kg)	
	ASD-LFMDR-12D1540-BZ		ASD-LFMDR-14D2150-BZ		ASD-LFMDR-MV-16D24CC-BZ	4.3 lb (2 kg)	
	ASD-LFMDR-12D1550-BZ		ASD-LFMDR-10D16CC-NK		ASD-LFMDR-MV-18D28CC-NK		
	ASD-LFMDR-12D2030-NK		ASD-LFMDR-10D16CC-BZ		ASD-LFMDR-MV-18D28CC-BZ		
	ASD-LFMDR-12D2040-NK		ASD-LFMDR-12D15CC-NK				
	ASD-LFMDR-12D2050-NK		ASD-LFMDR-12D20CC-NK				
	ASD-LFMDR-14D2130-NK		ASD-LFMDR-18D28CC-NK				
Environmental System							
Work Environment	Suitable for Damp Locations						
Operating Temperature	-4°F to 131°F / -20°C to 55°C						
L70 life	> 50,000 hrs						
Optical System							
Luminous Flux	ASD-LFMDR-12D1530-NK	1,050 lm	ASD-LFMDR-14D2140-NK	1,470 lm	ASD-LFMDR-MV-12D15CC-NK	1,050 lm	
	ASD-LFMDR-12D1540-NK		ASD-LFMDR-14D2150-NK		ASD-LFMDR-MV-12D20CC-NK	1,400 lm	
	ASD-LFMDR-12D1550-NK		ASD-LFMDR-14D2130-BZ		ASD-LFMDR-MV-14D21CC-NK	1,500 lm	
	ASD-LFMDR-12D1530-BZ		ASD-LFMDR-14D2140-BZ		ASD-LFMDR-MV-16D24CC-NK	1,680 lm	
	ASD-LFMDR-12D1540-BZ		ASD-LFMDR-14D2150-BZ		ASD-LFMDR-MV-16D24CC-BZ		
	ASD-LFMDR-12D1550-BZ		ASD-LFMDR-10D16CC-NK		ASD-LFMDR-MV-18D28CC-NK	2,000 lm	
	ASD-LFMDR-12D2030-NK		ASD-LFMDR-10D16CC-BZ		ASD-LFMDR-MV-18D28CC-BZ		
	ASD-LFMDR-12D2040-NK		ASD-LFMDR-12D15CC-NK				
	ASD-LFMDR-12D2050-NK		ASD-LFMDR-12D20CC-NK				
	ASD-LFMDR-14D2130-NK		ASD-LFMDR-18D28CC-NK				
Color Temperature	3,000 K; 4,000 K; 5,000 K; 3,000/4,000/5,000 K						
CRI	> 80						
Electrical System							
Input Voltage	120 V				120-277 V		
Max input current	ASD-LFMDR-12D1530-NK	0.155 A	ASD-LFMDR-14D2140-NK	0.18 A	ASD-LFMDR-MV-12D15CC-NK	0.4 A	
	ASD-LFMDR-12D1540-NK		ASD-LFMDR-14D2150-NK		ASD-LFMDR-MV-12D20CC-NK		
	ASD-LFMDR-12D1550-NK		ASD-LFMDR-14D2130-BZ		ASD-LFMDR-MV-14D21CC-NK	0.6 A	
	ASD-LFMDR-12D1530-BZ		ASD-LFMDR-14D2140-BZ		ASD-LFMDR-MV-16D24CC-NK		
	ASD-LFMDR-12D1540-BZ		ASD-LFMDR-14D2150-BZ		ASD-LFMDR-MV-16D24CC-BZ	0.5 A	
	ASD-LFMDR-12D1550-BZ		ASD-LFMDR-10D16CC-NK		ASD-LFMDR-MV-18D28CC-NK		
	ASD-LFMDR-12D2030-NK		ASD-LFMDR-10D16CC-BZ		ASD-LFMDR-MV-18D28CC-BZ		
	ASD-LFMDR-12D2040-NK		ASD-LFMDR-12D15CC-NK		0.15 A	0.25 A	
	ASD-LFMDR-12D2050-NK		ASD-LFMDR-12D20CC-NK		0.19 A		
	ASD-LFMDR-14D2130-NK		ASD-LFMDR-18D28CC-NK				
Inrush current (Action time)	ASD-LFMDR-12D1530-NK	0.13 A (0.08 S)	ASD-LFMDR-14D2140-NK	0.17 A (0.07 S)	ASD-LFMDR-MV-12D15CC-NK	0.2 A (0.1 S)	
	ASD-LFMDR-12D1540-NK		ASD-LFMDR-14D2150-NK		ASD-LFMDR-MV-12D20CC-NK		
	ASD-LFMDR-12D1550-NK		ASD-LFMDR-14D2130-BZ		ASD-LFMDR-MV-14D21CC-NK	0.3 A (0.1 S)	
	ASD-LFMDR-12D1530-BZ		ASD-LFMDR-14D2140-BZ		ASD-LFMDR-MV-16D24CC-NK		
	ASD-LFMDR-12D1540-BZ		ASD-LFMDR-14D2150-BZ		ASD-LFMDR-MV-16D24CC-BZ	0.25 A (0.1 S)	
	ASD-LFMDR-12D1550-BZ		ASD-LFMDR-10D16CC-NK		ASD-LFMDR-MV-18D28CC-NK		
	ASD-LFMDR-12D2030-NK		ASD-LFMDR-10D16CC-BZ		ASD-LFMDR-MV-18D28CC-BZ		
	ASD-LFMDR-12D2040-NK		ASD-LFMDR-12D15CC-NK		0.13 A (0.1 S)	0.125 A (0.1 S)	
	ASD-LFMDR-12D2050-NK		ASD-LFMDR-12D20CC-NK		0.167 A (0.1 S)		
	ASD-LFMDR-14D2130-NK		ASD-LFMDR-18D28CC-NK		0.23 A (0.1 S)		

For most up-to-date spec sheets please refer to asd-lighting.com

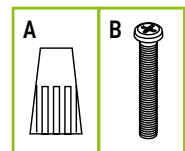


LED DOUBLE RING FLUSHMOUNT

Electrical System						
AC input range	min 108 V max 132 V			min 100 V max 277 V		
Off State Power	0 W					
Power Consumption	ASD-LFMDR-12D1530-NK	15 W	ASD-LFMDR-14D2140-NK	21 W	ASD-LFMDR-MV-12D15CC-NK	15 W
	ASD-LFMDR-12D1540-NK		ASD-LFMDR-14D2150-NK		ASD-LFMDR-MV-12D20CC-NK	20 W
	ASD-LFMDR-12D1550-NK		ASD-LFMDR-14D2130-BZ		ASD-LFMDR-MV-14D21CC-NK	21 W
	ASD-LFMDR-12D1530-BZ		ASD-LFMDR-14D2140-BZ		ASD-LFMDR-MV-16D24CC-NK	24 W
	ASD-LFMDR-12D1540-BZ		ASD-LFMDR-14D2150-BZ		ASD-LFMDR-MV-16D24CC-BZ	24 W
	ASD-LFMDR-12D1550-BZ	20 W	ASD-LFMDR-10D16CC-NK	16 W	ASD-LFMDR-MV-18D28CC-NK	28 W
	ASD-LFMDR-12D2030-NK		ASD-LFMDR-10D16CC-BZ		ASD-LFMDR-MV-18D28CC-BZ	28 W
	ASD-LFMDR-12D2040-NK		ASD-LFMDR-12D15CC-NK		15 W	
	ASD-LFMDR-12D2050-NK		ASD-LFMDR-12D20CC-NK		20 W	
	ASD-LFMDR-14D2130-NK		ASD-LFMDR-18D28CC-NK		28 W	
ASD-LFMDR-14D2130-NK	21 W					
Power Factor	> 0.9					
Output voltage	ASD-LFMDR-12D1530-NK	-	ASD-LFMDR-14D2140-NK	-	ASD-LFMDR-MV-12D15CC-NK	25-40 V
	ASD-LFMDR-12D1540-NK		ASD-LFMDR-14D2150-NK		ASD-LFMDR-MV-12D20CC-NK	
	ASD-LFMDR-12D1550-NK		ASD-LFMDR-14D2130-BZ		ASD-LFMDR-MV-14D21CC-NK	
	ASD-LFMDR-12D1530-BZ		ASD-LFMDR-14D2140-BZ		ASD-LFMDR-MV-16D24CC-NK	
	ASD-LFMDR-12D1540-BZ		ASD-LFMDR-14D2150-BZ		ASD-LFMDR-MV-16D24CC-BZ	
	ASD-LFMDR-12D1550-BZ		ASD-LFMDR-10D16CC-NK		ASD-LFMDR-MV-18D28CC-NK	25-37 V
	ASD-LFMDR-12D2030-NK		ASD-LFMDR-10D16CC-BZ		ASD-LFMDR-MV-18D28CC-BZ	
	ASD-LFMDR-12D2040-NK		ASD-LFMDR-12D15CC-NK			
	ASD-LFMDR-12D2050-NK		ASD-LFMDR-12D20CC-NK			
	ASD-LFMDR-14D2130-NK		ASD-LFMDR-18D28CC-NK			
Max output current	ASD-LFMDR-12D1530-NK	-	ASD-LFMDR-14D2140-NK	-	ASD-LFMDR-MV-12D15CC-NK	350 mA
	ASD-LFMDR-12D1540-NK		ASD-LFMDR-14D2150-NK		ASD-LFMDR-MV-12D20CC-NK	600 mA
	ASD-LFMDR-12D1550-NK		ASD-LFMDR-14D2130-BZ		ASD-LFMDR-MV-14D21CC-NK	
	ASD-LFMDR-12D1530-BZ		ASD-LFMDR-14D2140-BZ		ASD-LFMDR-MV-16D24CC-NK	
	ASD-LFMDR-12D1540-BZ		ASD-LFMDR-14D2150-BZ		ASD-LFMDR-MV-16D24CC-BZ	700 mA
	ASD-LFMDR-12D1550-BZ		ASD-LFMDR-10D16CC-NK		ASD-LFMDR-MV-18D28CC-NK	
	ASD-LFMDR-12D2030-NK		ASD-LFMDR-10D16CC-BZ		ASD-LFMDR-MV-18D28CC-BZ	
	ASD-LFMDR-12D2040-NK		ASD-LFMDR-12D15CC-NK			
	ASD-LFMDR-12D2050-NK		ASD-LFMDR-12D20CC-NK			
	ASD-LFMDR-14D2130-NK		ASD-LFMDR-18D28CC-NK			
LED driver class	DOB				Class 2	
Dimming range						
10-100%						
Dimming compatible controls						
Brand	Lutron		Leviton			
Models	MACL-153MLH	TGCL-153P	P-PKG1W	DSL06		
	DVCL-153PR	CTCL-153P	PD-6WCL	RNL06		
	STCL-153PH					
Regular and Voluntary Certifications						
5-year limited warranty						
cETLus certified 4001256						
Energy Star certified						

PACKAGE CONTENTS:

Description	Q-ty
LED Double Ring Flushmount	1
Wire nut (A)	3
Screw (B)	2
Box	1
Cut sheet	2



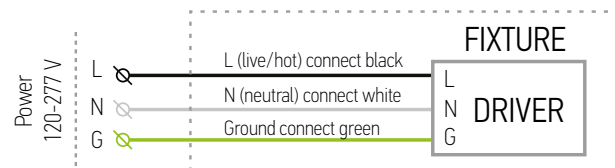
INSTALLATION GUIDE

IMPORTANT SAFETY INFORMATION:

Please read all the instructions below before installation.

- ▶ Make sure that the supply voltage corresponds to the rated product voltage.
- ▶ The product must be installed by a qualified electrician in accordance with the National Electrical Code and corresponding local codes.
- ▶ If the product is damaged, do not use it.

ELECTRICAL SCHEMATIC DIAGRAM:



For most up-to-date spec sheets please refer to asd-lighting.com

ASD LIGHTING CORP

E-mail: orders@asd-lighting.com | Web site: www.asd-lighting.com





LED DOUBLE RING FLUSHMOUNT

⚠️ WARNING

RISK OF PERSONAL INJURY – READ and follow all WARNINGS and installation instructions.

Keep or give to the owner for future reference.

Risk of cuts: Wear gloves to prevent cuts or abrasions when removing from carton, handling, installing, and maintaining this product.

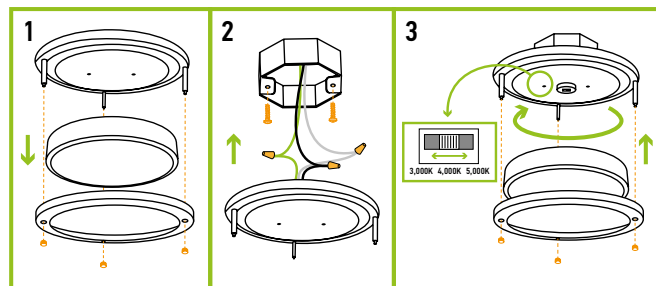
Risk of electric shock: This product must be installed in accordance with the applicable installation code by a person familiar with the construction and operation of the product and the hazards involved.

Risk of Fire: Minimum 194°F supply conductors. Consult a qualified electrician to ensure correct branch circuit conductor.

ASD® assumes no responsibility for claims arising out of improper or careless installation or handling of this product.

INSTALLATION STEPS:

1. Unscrew three cap nuts counter-clockwise, remove metal ring and the lens.
2. Attach two screws to the outlet box. Connect the wires: Black to Black, White to White, Ground to Ground. Carefully tuck all the wires back into the outlet box.
3. Place the fixture pan over the outlet box and feed fixture screws through keyhole slots. Rotate the fixture pan clockwise until screws lock into the narrow end of the keyhole slots and tighten screws firmly. For CCT adjustable models choose either 3,000K, 4,000K, or 5,000K with a simple switch. Secure the lens and metal ring to the fixture pan using three cap nuts.



ORDERING INFORMATION

Model	Size	Watts	Finish	UPC	Pcs. per Carton	Carton Size	Carton Weight	GTIN-14
ASD-LFMDR-12D1530-NK	12 inch	15 W	Brushed Nickel	810050730419	4	15.6" x 13.2" x 13.4"	11.7 lb	10810050730416
ASD-LFMDR-12D1540-NK	12 inch	15 W	Brushed Nickel	810050730426	4	15.6" x 13.2" x 13.4"	11.7 lb	10810050730423
ASD-LFMDR-12D1550-NK	12 inch	15 W	Brushed Nickel	810050730433	4	15.6" x 13.2" x 13.4"	11.7 lb	10810050730430
ASD-LFMDR-12D1530-BZ	12 inch	15 W	Oil Rubbed Bronze	819201028641	4	15.6" x 13.2" x 13.4"	11.7 lb	10819201028648
ASD-LFMDR-12D1540-BZ	12 inch	15 W	Oil Rubbed Bronze	819201028658	4	15.6" x 13.2" x 13.4"	11.7 lb	10819201028655
ASD-LFMDR-12D1550-BZ	12 inch	15 W	Oil Rubbed Bronze	819201028665	4	15.6" x 13.2" x 13.4"	11.7 lb	10819201028662
ASD-LFMDR-12D2030-NK	12 inch	20 W	Brushed Nickel	810050730440	4	15.6" x 13.2" x 13.4"	11.7 lb	10810050730447
ASD-LFMDR-12D2040-NK	12 inch	20 W	Brushed Nickel	810050730457	4	15.6" x 13.2" x 13.4"	11.7 lb	10810050730454
ASD-LFMDR-12D2050-NK	12 inch	20 W	Brushed Nickel	810050730464	4	15.6" x 13.2" x 13.4"	11.7 lb	10810050730461
ASD-LFMDR-14D2130-NK	14 inch	21 W	Brushed Nickel	810050730471	4	15.9" x 15.7" x 15.9"	16.4 lb	10810050730478
ASD-LFMDR-14D2140-NK	14 inch	21 W	Brushed Nickel	810050730488	4	15.9" x 15.7" x 15.9"	16.4 lb	10810050730485
ASD-LFMDR-14D2150-NK	14 inch	21 W	Brushed Nickel	810050730495	4	15.9" x 15.7" x 15.9"	16.4 lb	10810050730492
ASD-LFMDR-14D2130-BZ	14 inch	21 W	Oil Rubbed Bronze	810050733120	4	15.9" x 15.7" x 15.9"	16.4 lb	10810050733127
ASD-LFMDR-14D2140-BZ	14 inch	21 W	Oil Rubbed Bronze	810050733137	4	15.9" x 15.7" x 15.9"	16.4 lb	10810050733134
ASD-LFMDR-14D2150-BZ	14 inch	21 W	Oil Rubbed Bronze	810050733144	4	15.9" x 15.7" x 15.9"	16.4 lb	10810050733141
ASD-LFMDR-10D16CC-NK	10 inch	16 W	Brushed Nickel	810050731706	4	16.3" x 12" x 12.2"	9.9 lb	10810050731703
ASD-LFMDR-10D16CC-BZ	10 inch	16 W	Oil Rubbed Bronze	810050731713	4	16.3" x 12" x 12.2"	9.9 lb	10810050731710
ASD-LFMDR-12D15CC-NK	12 inch	15 W	Brushed Nickel	810050735728	4	15.6" x 13.2" x 13.4"	11.7 lb	10810050735725
ASD-LFMDR-12D20CC-NK	12 inch	20 W	Brushed Nickel	810050735735	4	15.6" x 13.2" x 13.4"	11.7 lb	10810050735732
ASD-LFMDR-18D28CC-NK	18 inch	28 W	Brushed Nickel	810050735551	4	20.1" x 18.3" x 20.1"	27.5 lb	10810050735558
ASD-LFMDR-MV-12D15CC-NK	12 inch	15 W	Brushed Nickel	819201027903	4	15.6" x 13.2" x 13.4"	11.7 lb	10819201027900
ASD-LFMDR-MV-12D20CC-NK	12 inch	20 W	Brushed Nickel	810050732826	4	15.6" x 13.2" x 13.4"	11.7 lb	10810050732823
ASD-LFMDR-MV-14D21CC-NK	14 inch	21 W	Brushed Nickel	819201027927	4	15.9" x 15.7" x 15.9"	16.4 lb	10819201027924
ASD-LFMDR-MV-16D24CC-NK	16 inch	24 W	Brushed Nickel	810050730587	4	17.5" x 16.5" x 17.7"	19.2 lb	10810050730584
ASD-LFMDR-MV-16D24CC-BZ	16 inch	24 W	Oil Rubbed Bronze	819201027958	4	17.5" x 16.5" x 17.7"	19.2 lb	10819201027955
ASD-LFMDR-MV-18D28CC-NK	18 inch	28 W	Brushed Nickel	810050730402	4	20.1" x 18.3" x 20.1"	27.5 lb	10810050730409
ASD-LFMDR-MV-18D28CC-BZ	18 inch	28 W	Oil Rubbed Bronze	810050732048	4	20.1" x 18.3" x 20.1"	27.5 lb	10810050732045

For most up-to-date spec sheets please refer to asd-lighting.com