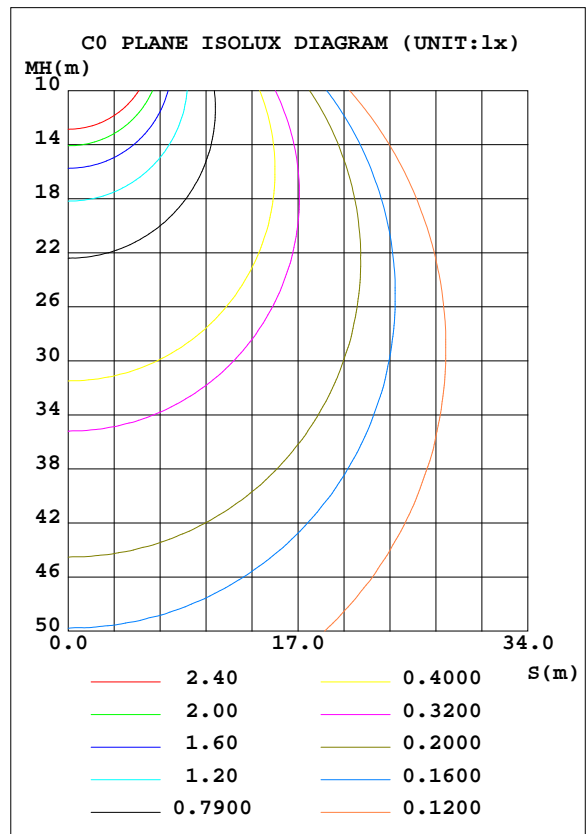
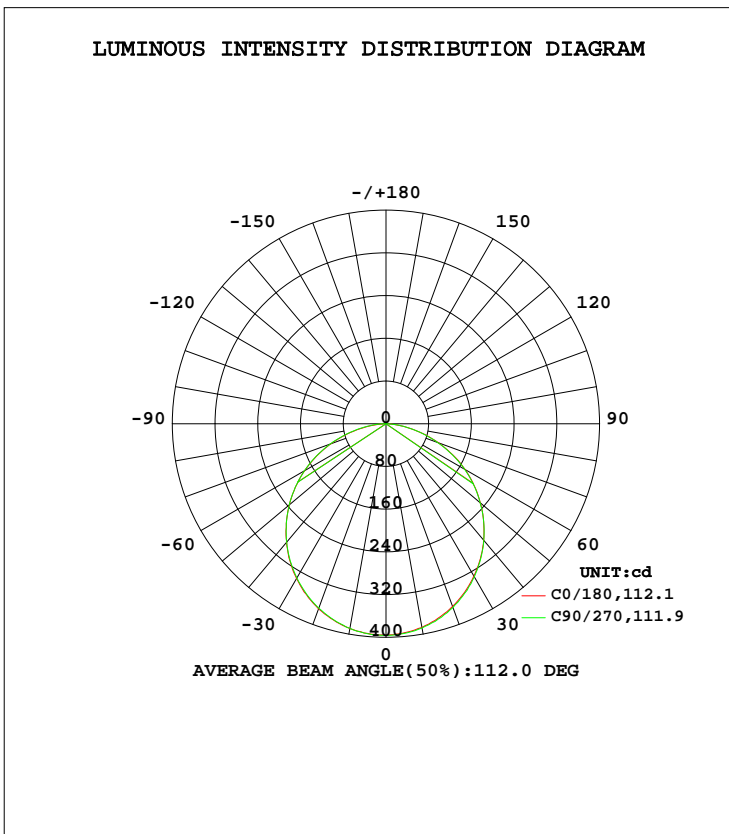


LUMINAIRE PHOTOMETRIC TEST REPORT

Test:U:120.1V I:0.1222A P:14.40W PF:0.9814 Lamp Flux:1122.69x1 lm		
NAME: ASD-MPR-7D15CC-EM-WH 3000K	TYPE:N/A	WEIGHT:N/A
SPEC.:N/A	DIM.: N/A	SERIAL No.:N/A
MFR.: ASD Lighting Corp	SUR.:N/A	Shielding Angle:N/A

DATA OF LAMP		PHOTOMETRIC DATA Eff: 77.96 lm/W			
MODEL	ASD-MPR-7D15CC-EM-WH	I _{max} (cd)	396.4	S/MH(C0/180)	1.24
NOMINAL POWER(W)		LOR(%)	100.0	S/MH(C90/270)	1.24
RATED VOLTAGE(V)	120	TOTAL FLUX(lm)	1122.7	η UP, DN(C0-180)	0.1,50.7
NOMINAL FLUX(lm)	1122.69	CIE CLASS	DIRECT	η UP, DN(C180-360)	0.0,49.2
LAMPS INSIDE	1	η up(%)	0.1	CIBSE SHR NOM	1.25
TEST VOLTAGE(V)	120	η down(%)	99.9	CIBSE SHR MAX	1.35



C Range: 0 - 360DEG
 C Interval: 22.5DEG
 Test Speed: HIGH
 Temperature:25.4DEG
 Operators:Carl
 Test Date:2022-06-02

γ Range: 0 - 180DEG
 γ Interval: 1.0DEG
 Test System:EVERFINE GO-R5000_V2 SYSTEM V2.0.351
 Humidity:39%
 Test Distance:2.526m [K=1.0000]
 Remarks:

ZONAL FLUX DIAGRAM

ZONAL FLUX DIAGRAM:

γ	C0	C45	C90	C135	C180	C225	C270	C315	γ	Φ zone	Φ total	%lum,lamp
10	389.5	389.6	389.1	388.5	387.3	387.9	388.4	387.8	0- 10	37.44	37.44	3.33,3.33
20	368.9	367.9	367.8	367.1	364.3	365.1	366.5	366.3	10- 20	107.0	144.4	12.9,12.9
30	335.0	334.2	333.8	333.5	329.3	329.7	331.0	332.6	20- 30	161.7	306.2	27.3,27.3
40	289.8	289.4	289.3	288.9	284.4	283.9	285.0	286.7	30- 40	194.5	500.7	44.6,44.6
50	236.3	236.6	236.6	235.8	230.7	230.1	230.4	232.2	40- 50	201.6	702.3	62.6,62.6
60	176.0	176.4	176.6	176.2	170.7	169.4	169.5	171.0	50- 60	182.4	884.7	78.8,78.8
70	109.8	111.1	111.5	111.6	104.6	103.6	103.0	104.1	60- 70	139.2	1024	91.2,91.2
80	43.44	45.44	47.34	46.66	40.20	39.72	39.92	39.79	70- 80	78.63	1103	98.2,98.2
90	0.0749	0.0929	0.0911	0.2298	0.0182	0.0194	0.0198	0.0200	80- 90	18.97	1121	99.9,99.9
100	0.0951	0.1085	0.0991	0.1142	0.0392	0.0535	0.0424	0.0544	90-100	0.0634	1122	99.9,99.9
110	0.1141	0.1210	0.1202	0.1272	0.0692	0.0780	0.0719	0.0758	100-110	0.0911	1122	99.9,99.9
120	0.1517	0.1533	0.1561	0.1611	0.1082	0.1087	0.1056	0.1074	110-120	0.1113	1122	99.9,99.9
130	0.2251	0.2254	0.2355	0.2358	0.1561	0.1520	0.1477	0.1500	120-130	0.1421	1122	99.9,99.9
140	0.3547	0.3759	0.3828	0.3748	0.2026	0.2037	0.2008	0.2008	130-140	0.1804	1122	99.9,99.9
150	0.5143	0.5675	0.5764	0.5591	0.2417	0.2536	0.2585	0.2491	140-150	0.2173	1122	100,100
160	0.6590	0.6791	0.6900	0.6903	0.3256	0.3189	0.3232	0.3076	150-160	0.2104	1122	100,100
170	0.6285	0.6249	0.6357	0.6405	0.3926	0.3681	0.3707	0.3747	160-170	0.1443	1123	100,100
180	0.5301	0.4996	0.4924	0.5309	0.5323	0.5151	0.4911	0.5073	170-180	0.0487	1123	100,100
DEG	LUMINOUS INTENSITY:cd									UNIT:lm		

Conical surface Flux(90deg): 602.29 lm

%lum = 53.6%

%lamp = 53.6%

Conical surface Flux(120deg): 884.72 lm

%lum = 78.8%

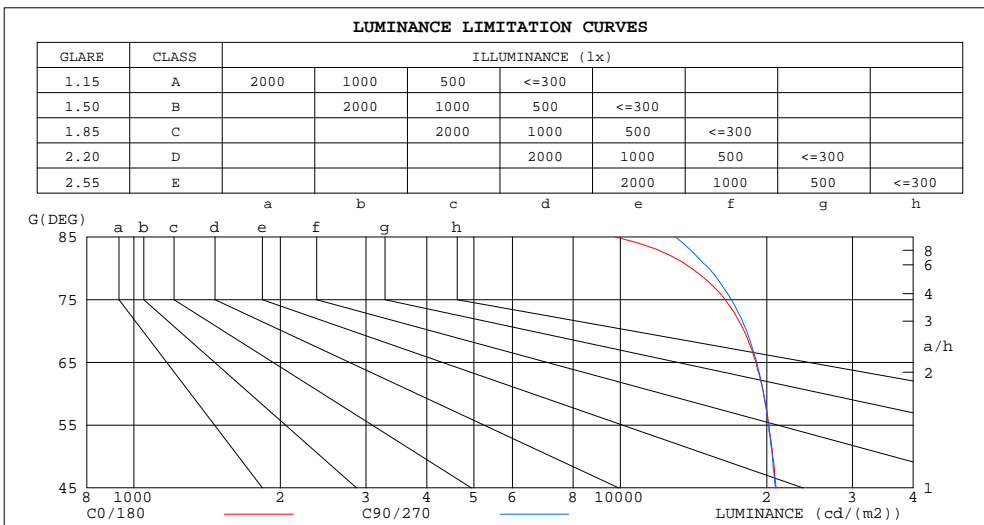
%lamp = 78.8%

C Range: 0 - 360DEG
C Interval: 22.5DEG
Test Speed: HIGH
Temperature:25.4DEG
Operators:Carl
Test Date:2022-06-02

γ Range: 0 - 180DEG
 γ Interval: 1.0DEG
Test System:EVERFINE GO-R5000_V2 SYSTEM V2.0.351
Humidity:39%
Test Distance:2.526m [K=1.0000]
Remarks:

LUMINANCE LIMITATION CURVES

Test:U:120.1V I:0.1222A P:14.40W PF:0.9814 Lamp Flux:1122.69x1 lm		
NAME: ASD-MPR-7D15CC-EM-WH 3000K	TYPE:N/A	WEIGHT:N/A
SPEC.:N/A	DIM.: N/A	SERIAL No.:N/A
MFR.: ASD Lighting Corp	SUR.:N/A	Shielding Angle:N/A



LUMINANCE cd/(m2)		
G(DEG)	C0/180	C90/270
85	9754	12975
80	13997	15209
75	16431	16903
70	17958	18190
65	19017	19071
60	19699	19701
55	20207	20189
50	20572	20537
45	20905	20833

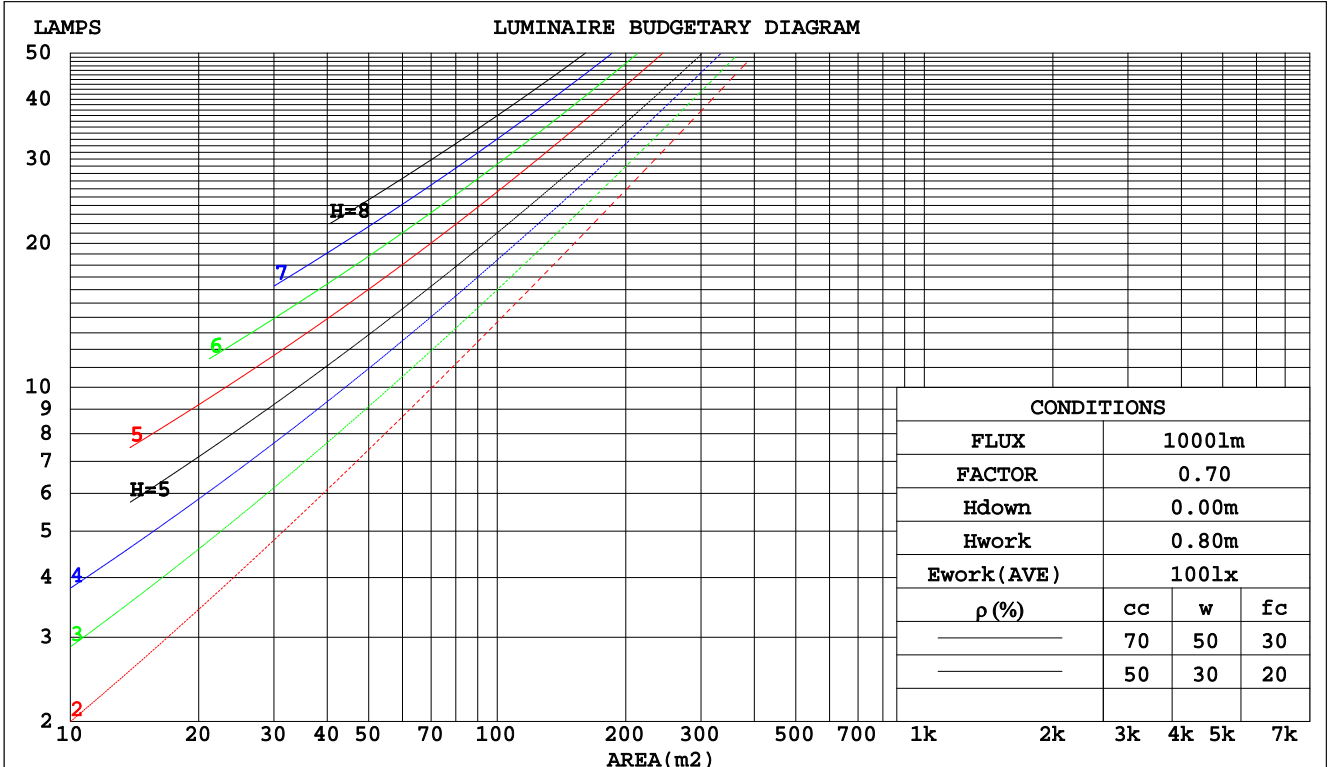
C Range: 0 - 360DEG
 C Interval: 22.5DEG
 Test Speed: HIGH
 Temperature:25.4DEG
 Operators:Carl
 Test Date:2022-06-02

γ Range: 0 - 180DEG
 γ Interval: 1.0DEG
 Test System:EVERFINE GO-R5000_V2 SYSTEM V2.0.351
 Humidity:39%
 Test Distance:2.526m [K=1.0000]
 Remarks:

CU AND LUMINAIRE BUDGETARY ESTIMATE DIAGRAM

Test:U:120.1V I:0.1222A P:14.40W PF:0.9814 Lamp Flux:1122.69x1 lm		
NAME: ASD-MPR-7D15CC-EM-WH 3000K	TYPE:N/A	WEIGHT:N/A
SPEC.:N/A	DIM.: N/A	SERIAL No.:N/A
MFR.: ASD Lighting Corp	SUR.:N/A	Shielding Angle:N/A

pcc	80%			70%			50%			30%			10%			0
	50%	30%	10%	50%	30%	10%	50%	30%	10%	50%	30%	10%	50%	30%	10%	0
pw																0
pfc	20%			20%			20%			20%			20%			0
RCR	RCR:Room Cavity Ratio Coefficients of Utilization(CU)															
0.0	1.19	1.19	1.19	1.16	1.16	1.16	1.11	1.11	1.11	1.06	1.06	1.06	1.02	1.02	1.02	.00
1.0	1.04	.00	.96	1.02	.98	.94	.97	.94	.91	.93	.91	.88	.90	.88	.86	.84
2.0	.91	.84	.78	.89	.82	.77	.85	.80	.75	.82	.77	.73	.79	.75	.72	.70
3.0	.79	.71	.65	.78	.70	.64	.75	.68	.63	.72	.66	.62	.69	.65	.61	.58
4.0	.70	.61	.55	.69	.61	.54	.66	.59	.54	.64	.58	.53	.62	.56	.52	.50
5.0	.63	.54	.47	.62	.53	.47	.59	.52	.46	.57	.51	.46	.56	.50	.45	.43
6.0	.56	.47	.41	.56	.47	.41	.54	.46	.40	.52	.45	.40	.50	.44	.40	.38
7.0	.51	.42	.36	.50	.42	.36	.49	.41	.36	.47	.41	.36	.46	.40	.35	.33
8.0	.47	.38	.32	.46	.38	.32	.45	.37	.32	.43	.37	.32	.42	.36	.32	.30
9.0	.43	.35	.29	.42	.34	.29	.41	.34	.29	.40	.33	.29	.39	.33	.28	.27
10.0	.40	.32	.26	.39	.31	.26	.38	.31	.26	.37	.31	.26	.36	.30	.26	.24



C Range: 0 - 360DEG
 C Interval: 22.5DEG
 Test Speed: HIGH
 Temperature:25.4DEG
 Operators:Carl
 Test Date:2022-06-02

γ Range: 0 - 180DEG
 γ Interval: 1.0DEG
 Test System:EVERFINE GO-R5000_V2 SYSTEM V2.0.351
 Humidity:39%
 Test Distance:2.526m [K=1.0000]
 Remarks:

WEC AND CCEC

Test:U:120.1V I:0.1222A P:14.40W PF:0.9814 Lamp Flux:1122.69x1 lm		
NAME: ASD-MPR-7D15CC-EM-WH 3000K	TYPE:N/A	WEIGHT:N/A
SPEC.:N/A	DIM.: N/A	SERIAL No.:N/A
MFR.: ASD Lighting Corp	SUR.:N/A	Shielding Angle:N/A

ρcc	80%			70%			50%			30%			10%			0
ρw	50%	30%	10%	50%	30%	10%	50%	30%	10%	50%	30%	10%	50%	30%	10%	0
ρfc	20%			20%			20%			20%			20%			0
RCR	RCR:Room Cavity Ratio						Wall Exitance Coefficients(WEC)									
0.0																
1.0	.308	.175	.055	.301	.172	.055	.288	.165	.053	.275	.159	.051	.264	.153	.049	
2.0	.291	.159	.049	.285	.157	.048	.273	.152	.047	.262	.147	.046	.252	.143	.045	
3.0	.270	.143	.043	.264	.141	.043	.254	.137	.042	.244	.134	.041	.235	.130	.040	
4.0	.249	.129	.038	.244	.128	.038	.235	.125	.037	.226	.121	.037	.218	.119	.036	
5.0	.230	.117	.034	.226	.116	.034	.218	.113	.033	.210	.111	.033	.203	.108	.033	
6.0	.214	.107	.031	.210	.106	.030	.202	.104	.030	.196	.102	.030	.189	.100	.030	
7.0	.199	.098	.028	.195	.097	.028	.189	.095	.027	.183	.094	.027	.177	.092	.027	
8.0	.186	.091	.026	.183	.090	.025	.177	.088	.025	.171	.087	.025	.166	.085	.025	
9.0	.174	.084	.023	.171	.083	.023	.166	.082	.023	.161	.081	.023	.156	.079	.023	
10.0	.164	.078	.022	.161	.078	.022	.156	.077	.022	.152	.075	.021	.148	.074	.021	

ρcc	80%			70%			50%			30%			10%			0
ρw	50%	30%	10%	50%	30%	10%	50%	30%	10%	50%	30%	10%	50%	30%	10%	0
ρfc	20%			20%			20%			20%			20%			0
RCR	RCR:Room Cavity Ratio						Ceiling Cavity Exitance Coefficients(CCEC)									
0.0	.191	.191	.191	.163	.163	.163	.112	.112	.112	.064	.064	.064	.020	.020	.020	
1.0	.181	.157	.135	.155	.135	.116	.106	.093	.081	.061	.054	.047	.020	.017	.015	
2.0	.173	.133	.099	.148	.114	.086	.102	.079	.060	.059	.046	.035	.019	.015	.011	
3.0	.165	.115	.075	.142	.099	.065	.097	.069	.046	.056	.040	.027	.018	.013	.009	
4.0	.158	.102	.059	.135	.088	.051	.093	.061	.036	.054	.036	.021	.017	.012	.007	
5.0	.150	.091	.048	.129	.079	.042	.089	.055	.030	.051	.032	.018	.017	.011	.006	
6.0	.143	.083	.040	.123	.072	.035	.085	.050	.025	.049	.030	.015	.016	.010	.005	
7.0	.136	.076	.034	.117	.066	.030	.081	.046	.021	.047	.027	.013	.015	.009	.004	
8.0	.130	.070	.030	.112	.061	.026	.077	.043	.018	.045	.025	.011	.015	.008	.004	
9.0	.124	.065	.026	.107	.057	.023	.074	.040	.016	.043	.024	.010	.014	.008	.003	
10.0	.118	.061	.023	.102	.053	.020	.071	.037	.014	.041	.022	.009	.013	.007	.003	

C Range: 0 - 360DEG
 C Interval: 22.5DEG
 Test Speed: HIGH
 Temperature:25.4DEG
 Operators:Carl
 Test Date:2022-06-02

γ Range: 0 - 180DEG
 γ Interval: 1.0DEG
 Test System:EVERFINE GO-R5000_V2 SYSTEM V2.0.351
 Humidity:39%
 Test Distance:2.526m [K=1.0000]
 Remarks:

UGR(Unified Glare Rating) Table

Test:U:120.1V I:0.1222A P:14.40W PF:0.9814 Lamp Flux:1122.69x1 lm		
NAME: ASD-MPR-7D15CC-EM-WH 3000K	TYPE:N/A	WEIGHT:N/A
SPEC.:N/A	DIM.: N/A	SERIAL No.:N/A
MFR.: ASD Lighting Corp	SUR.:N/A	Shielding Angle:N/A

ceiling/cavity	0.7	0.7	0.5	0.5	0.3	0.7	0.7	0.5	0.5	0.3
walls	0.5	0.3	0.5	0.3	0.3	0.5	0.3	0.5	0.3	0.3
working plane	0.2	0.2	0.2	0.2	0.2	0.2	0.2	0.2	0.2	0.2
Room dimensions	Viewed crosswise					Viewed endwise				
x = 2H y = 2H	23.4	24.9	23.7	25.1	25.3	23.4	24.9	23.7	25.1	25.3
3H	24.9	26.3	25.2	26.6	26.8	24.9	26.3	25.2	26.6	26.8
4H	25.5	26.9	25.8	27.1	27.4	25.6	26.9	25.9	27.1	27.4
6H	25.9	27.2	26.2	27.4	27.7	26.0	27.3	26.3	27.5	27.8
8H	26.0	27.2	26.4	27.5	27.8	26.1	27.4	26.5	27.6	27.9
12H	26.1	27.2	26.4	27.5	27.8	26.2	27.4	26.6	27.7	28.0
4H 2H	24.0	25.4	24.3	25.6	25.9	24.0	25.3	24.3	25.6	25.9
3H	25.7	26.9	26.1	27.2	27.5	25.7	26.9	26.1	27.2	27.5
4H	26.4	27.5	26.8	27.8	28.2	26.5	27.6	26.9	27.9	28.2
6H	27.0	27.9	27.4	28.3	28.6	27.1	28.0	27.5	28.4	28.7
8H	27.1	28.0	27.5	28.4	28.8	27.2	28.1	27.7	28.5	28.9
12H	27.2	28.0	27.6	28.4	28.8	27.4	28.2	27.8	28.6	29.0
8H 4H	26.7	27.6	27.1	28.0	28.4	26.8	27.6	27.2	28.0	28.4
6H	27.4	28.1	27.8	28.5	28.9	27.5	28.2	27.9	28.6	29.0
8H	27.6	28.3	28.1	28.7	29.1	27.7	28.4	28.2	28.8	29.3
12H	27.7	28.3	28.2	28.7	29.2	27.9	28.5	28.4	29.0	29.4
12H 4H	26.7	27.5	27.2	27.9	28.3	26.8	27.6	27.2	28.0	28.4
6H	27.4	28.1	27.9	28.5	29.0	27.5	28.2	28.0	28.6	29.1
8H	27.7	28.3	28.2	28.7	29.2	27.8	28.4	28.3	28.8	29.3
Variations with the observer position at spacings:										
S = 1.0H	+ 0.2 / - 0.2					+ 0.1 / - 0.2				
1.5H	+ 0.2 / - 0.3					+ 0.2 / - 0.3				
2.0H	+ 0.2 / - 0.3					+ 0.1 / - 0.3				

CIE Pub.117 Corrected 1123 lm Total Lamp Luminous Flux.(8log(F/F0) = 0.4)

C Range: 0 - 360DEG
 C Interval: 22.5DEG
 Test Speed: HIGH
 Temperature:25.4DEG
 Operators:Carl
 Test Date:2022-06-02

γ Range: 0 - 180DEG
 γ Interval: 1.0DEG
 Test System:EVERFINE GO-R5000_V2 SYSTEM V2.0.351
 Humidity:39%
 Test Distance:2.526m [K=1.0000]
 Remarks:

UTILIZATION FACTORS TABLE

Test:U:120.1V I:0.1222A P:14.40W PF:0.9814 Lamp Flux:1122.69x1 lm		
NAME: ASD-MPR-7D15CC-EM-WH 3000K	TYPE:N/A	WEIGHT:N/A
SPEC.:N/A	DIM.: N/A	SERIAL No.:N/A
MFR.: ASD Lighting Corp	SUR.:N/A	Shielding Angle:N/A

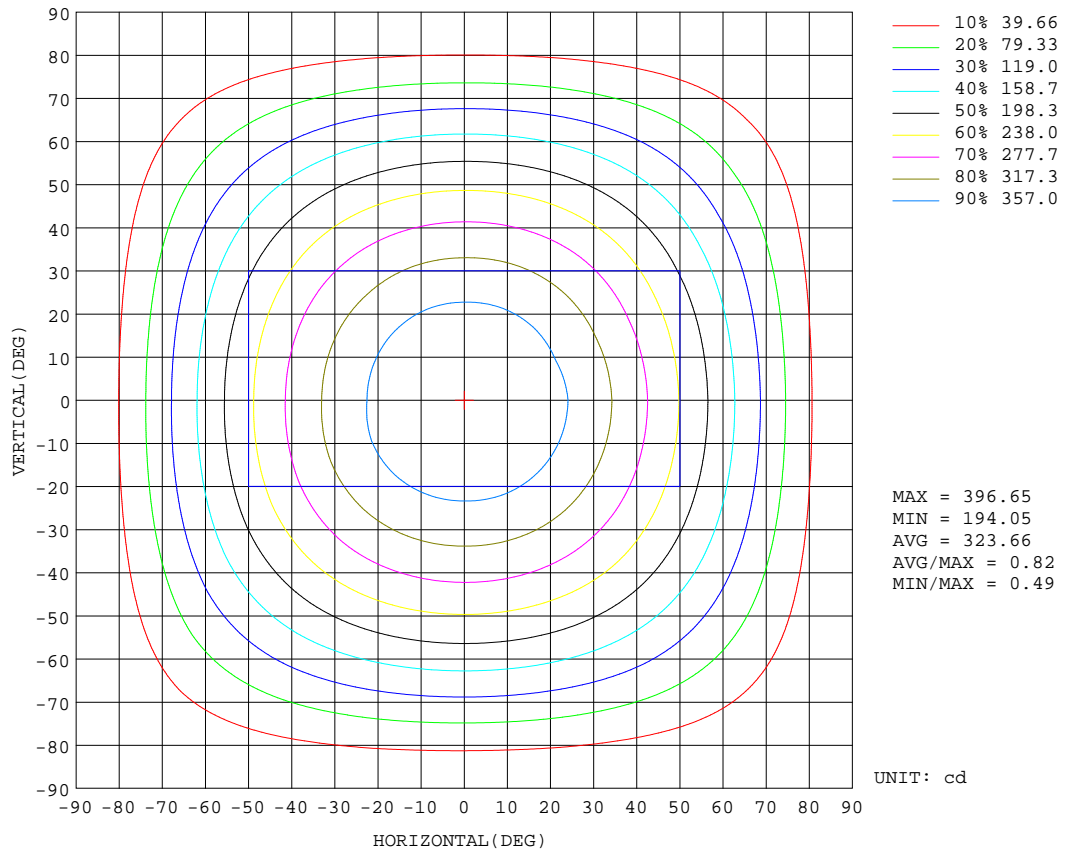
REFLECTANCE										
Ceiling	0.8	0.8	0.8	0.7	0.7	0.7	0.5	0.5	0.5	0
Walls	0.7	0.5	0.3	0.7	0.5	0.3	0.7	0.5	0.3	0
Working plane	0.2	0.2	0.2	0.2	0.2	0.2	0.2	0.2	0.2	0
ROOM INDEX	UTILIZATION FACTORS(PERCENT) $k(RI) \times RCR = 5$									
k = 0.60	57	46	39	57	46	39	56	45	39	32
0.80	68	56	49	67	55	48	65	55	48	41
1.00	76	65	58	75	64	57	73	66	57	50
1.25	83	73	65	82	72	65	79	70	64	57
1.50	88	78	71	86	77	71	83	76	70	62
2.00	95	86	80	93	85	79	90	83	78	70
2.50	99	91	85	97	90	84	93	87	82	74
3.00	102	95	90	100	94	89	96	91	87	78
4.00	106	101	96	104	99	95	100	95	92	83
5.00	109	104	100	106	102	98	102	98	95	86
ROOM INDEX	UF(total)									Direct
According to DIN EN 13032-2 2004			Suspended				SHRNOM = 1.25			

C Range: 0 - 360DEG
 C Interval: 22.5DEG
 Test Speed: HIGH
 Temperature:25.4DEG
 Operators:Carl
 Test Date:2022-06-02

γ Range: 0 - 180DEG
 γ Interval: 1.0DEG
 Test System:EVERFINE GO-R5000_V2 SYSTEM V2.0.351
 Humidity:39%
 Test Distance:2.526m [K=1.0000]
 Remarks:

ISOCANDELA DIAGRAM

Test:U:120.1V I:0.1222A P:14.40W PF:0.9814 Lamp Flux:1122.69x1 lm		
NAME: ASD-MPR-7D15CC-EM-WH 3000K	TYPE:N/A	WEIGHT:N/A
SPEC.:N/A	DIM.: N/A	SERIAL No.:N/A
MFR.: ASD Lighting Corp	SUR.:N/A	Shielding Angle:N/A

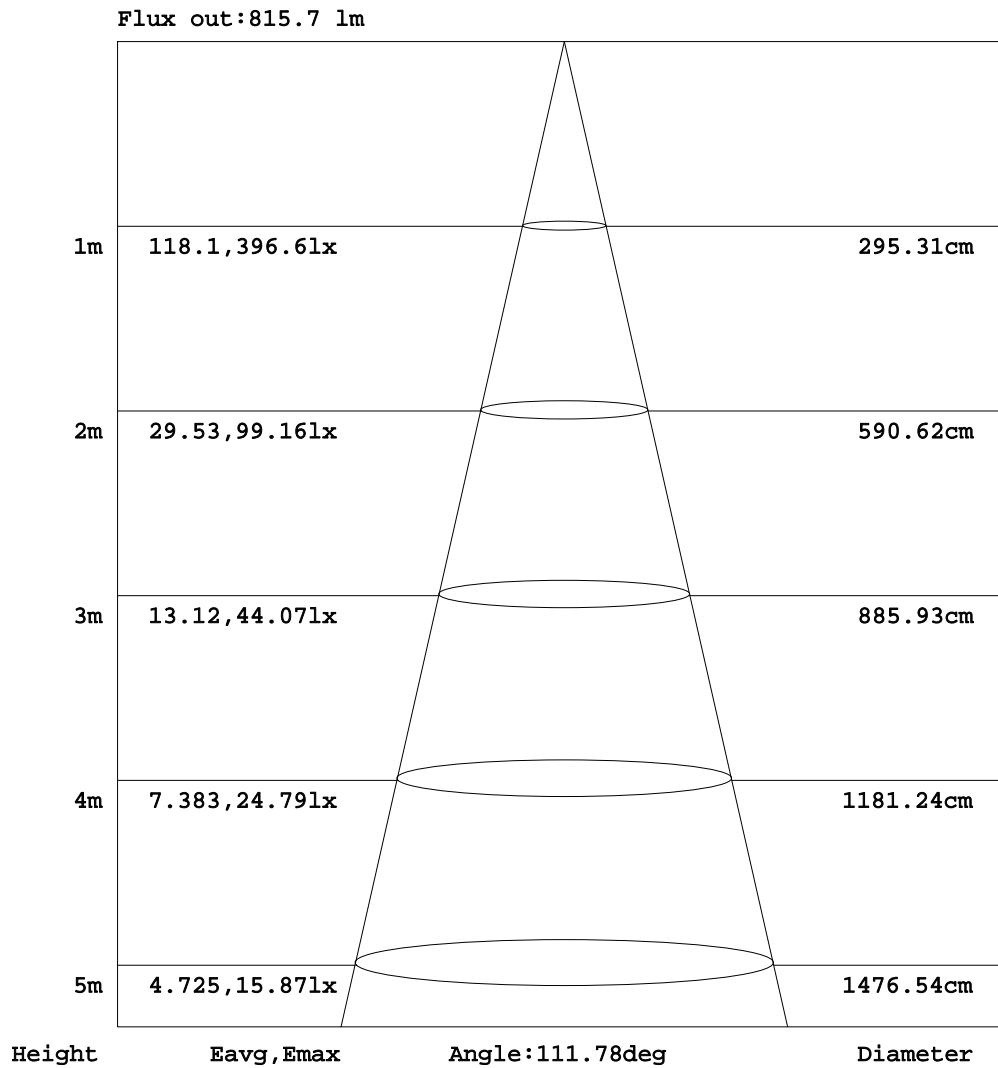


C Range: 0 - 360DEG
 C Interval: 22.5DEG
 Test Speed: HIGH
 Temperature:25.4DEG
 Operators:Carl
 Test Date:2022-06-02

γ Range: 0 - 180DEG
 γ Interval: 1.0DEG
 Test System:EVERFINE GO-R5000_V2 SYSTEM V2.0.351
 Humidity:39%
 Test Distance:2.526m [K=1.0000]
 Remarks:

AAI Figure

Test:U:120.1V I:0.1222A P:14.40W PF:0.9814 Lamp Flux:1122.69x1 lm		
NAME: ASD-MPR-7D15CC-EM-WH 3000K	TYPE:N/A	WEIGHT:N/A
SPEC.:N/A	DIM.: N/A	SERIAL No.:N/A
MFR.: ASD Lighting Corp	SUR.:N/A	Shielding Angle:N/A



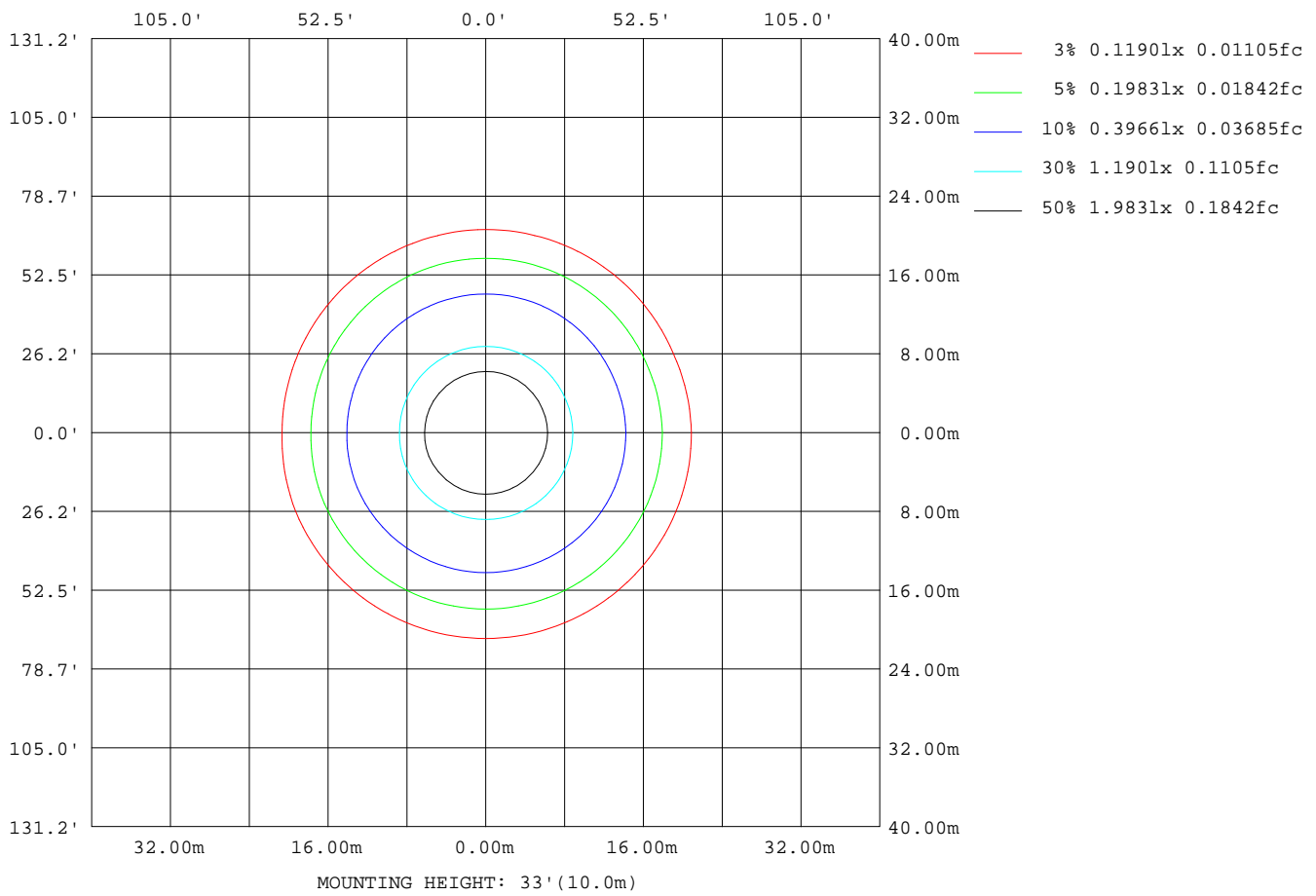
Note:The Curves indicate the illuminated area and the average illumination when the luminaire is at different distance.

C Range: 0 - 360DEG
 C Interval: 22.5DEG
 Test Speed: HIGH
 Temperature:25.4DEG
 Operators:Carl
 Test Date:2022-06-02

γ Range: 0 - 180DEG
 γ Interval: 1.0DEG
 Test System:EVERFINE GO-R5000_V2 SYSTEM V2.0.351
 Humidity:39%
 Test Distance:2.526m [K=1.0000]
 Remarks:

ISOLUX DIAGRAM

Test:U:120.1V I:0.1222A P:14.40W PF:0.9814 Lamp Flux:1122.69x1 lm		
NAME: ASD-MPR-7D15CC-EM-WH 3000K	TYPE:N/A	WEIGHT:N/A
SPEC.:N/A	DIM.: N/A	SERIAL No.:N/A
MFR.: ASD Lighting Corp	SUR.:N/A	Shielding Angle:N/A



C Range: 0 - 360DEG
 C Interval: 22.5DEG
 Test Speed: HIGH
 Temperature:25.4DEG
 Operators:Carl
 Test Date:2022-06-02

γ Range: 0 - 180DEG
 γ Interval: 1.0DEG
 Test System:EVERFINE GO-R5000_V2 SYSTEM V2.0.351
 Humidity:39%
 Test Distance:2.526m [K=1.0000]
 Remarks:

LED Avg.L Report

Test:U:120.1V I:0.1222A P:14.40W PF:0.9814 Lamp Flux:1122.69x1 lm		
NAME: ASD-MPR-7D15CC-EM-WH 3000K	TYPE:N/A	WEIGHT:N/A
SPEC.:N/A	DIM.: N/A	SERIAL No.:N/A
MFR.: ASD Lighting Corp	SUR.:N/A	Shielding Angle:N/A

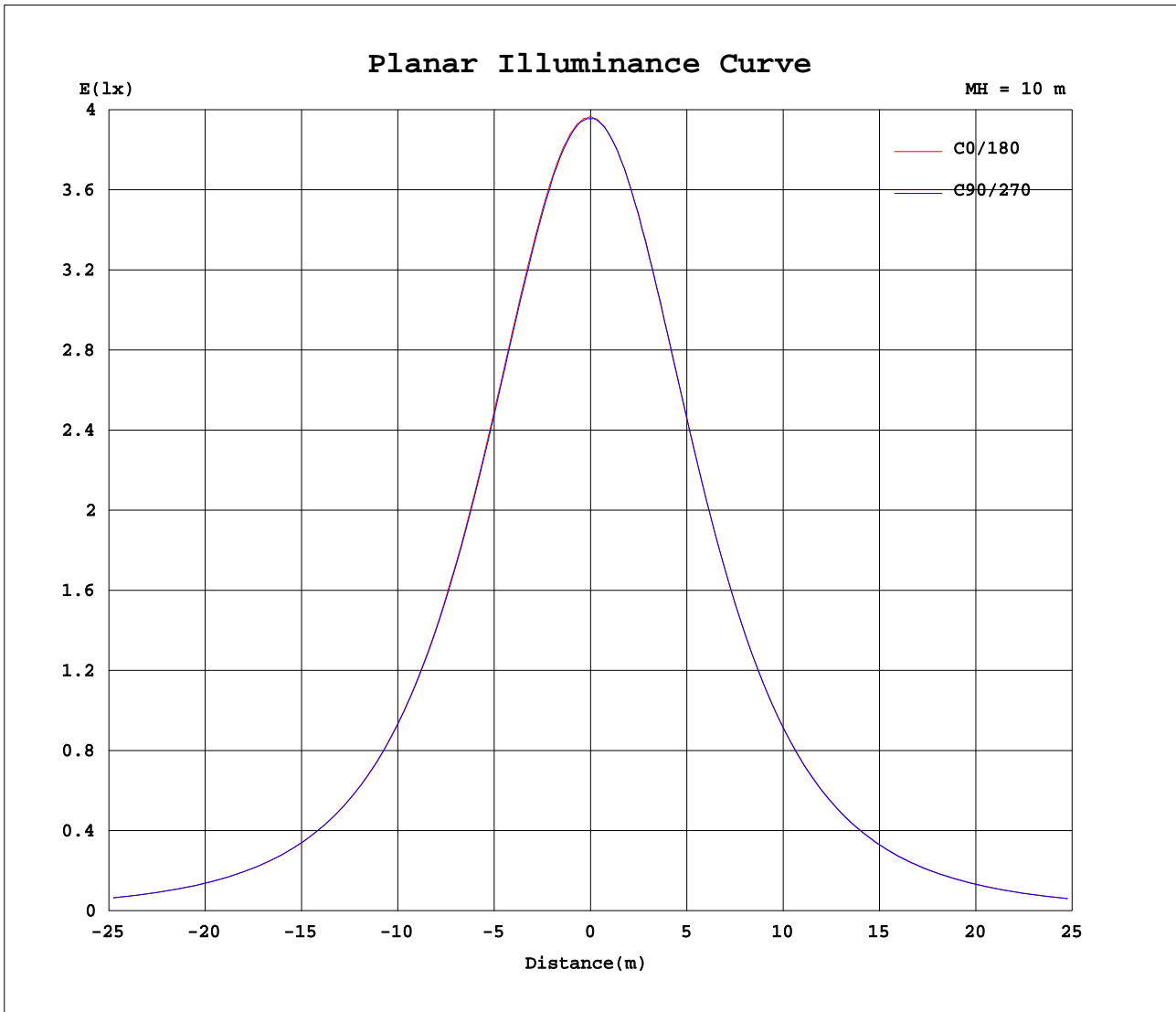
AvgL	cd/m2
L_0~180(65)av	18615
L_0~180(75)av	15934
L_0~180(85)av	9084
L_90~270(65)av	18583
L_90~270(75)av	16055
L_90~270(85)av	11164
L_45(65)av	18625
L_45(75)av	16066
L_45(85)av	10139

Standard: GB/T 29293-2012

C Range: 0 - 360DEG
C Interval: 22.5DEG
Test Speed: HIGH
Temperature:25.4DEG
Operators:Carl
Test Date:2022-06-02

γ Range: 0 - 180DEG
 γ Interval: 1.0DEG
Test System:EVERFINE GO-R5000_V2 SYSTEM V2.0.351
Humidity:39%
Test Distance:2.526m [K=1.0000]
Remarks:

Planar Illuminance Curve



C Range: 0 - 360DEG
C Interval: 22.5DEG
Test Speed: HIGH
Temperature: 25.4DEG
Operators: Carl
Test Date: 2022-06-02

γ Range: 0 - 180DEG
 γ Interval: 1.0DEG
Test System: EVERFINE GO-R5000_V2 SYSTEM V2.0.351
Humidity: 39%
Test Distance: 2.526m [K=1.0000]
Remarks:

LUMINOUS DISTRIBUTION INTENSITY DATA

Test:U:120.1V I:0.1222A P:14.40W PF:0.9814 Lamp Flux:1122.69x1 lm		
NAME: ASD-MPR-7D15CC-EM-WH 3000K	TYPE:N/A	WEIGHT:N/A
SPEC.:N/A	DIM.: N/A	SERIAL No.:N/A
MFR.: ASD Lighting Corp	SUR.:N/A	Shielding Angle:N/A

Table--1

UNIT: cd

C(DEG) γ (DEG)	0	22.5	45	67.5	90	112.5	135	157.5	180	202.5	225	247.5	270	292.5	315	337.5			
0	396	396	396	396	396	396	396	396	396	396	396	396	396	396	396	396			
5	394	395	394	395	395	394	394	394	393	394	394	394	394	394	394	394			
10	389	390	390	389	389	389	389	389	387	387	388	388	388	388	388	388			
15	380	381	380	380	380	380	380	379	377	378	378	378	379	379	379	379			
20	369	369	368	368	368	368	367	367	364	364	365	366	366	366	366	367			
25	353	353	352	352	352	352	352	352	348	349	348	349	350	350	351	351			
30	335	334	334	334	334	334	334	333	329	330	330	330	331	332	333	333			
35	314	314	313	313	313	313	313	312	308	308	307	308	309	310	311	311			
40	290	290	289	289	289	289	289	289	284	284	284	284	285	286	287	287			
45	264	265	264	264	264	264	264	263	259	258	258	258	259	260	260	261			
50	236	236	237	236	237	236	236	235	231	230	230	230	230	231	232	233			
55	207	208	207	207	208	207	207	206	202	201	201	201	201	201	202	203			
60	176	176	176	176	177	176	176	176	171	170	169	169	170	170	171	172			
65	144	144	144	144	144	144	144	144	138	138	137	136	137	137	138	138			
70	110	110	111	111	112	112	112	111	105	104	104	103	103	104	104	104			
75	76.0	76.7	77.5	78.2	78.4	78.8	78.5	77.6	71.6	70.9	70.7	70.5	70.3	71.0	71.0	70.8			
80	43.4	44.2	45.4	46.7	47.3	47.5	46.7	45.4	40.2	39.6	39.7	40.0	39.9	40.2	39.8	39.3			
85	15.2	16.1	17.8	19.6	20.3	20.3	18.9	17.3	13.2	12.8	13.4	14.5	14.6	14.4	13.1	12.1			
90	0.07	0.08	0.09	0.17	0.09	0.10	0.23	0.20	0.02	0.02	0.02	0.02	0.02	0.02	0.02	0.02			
95	0.08	0.08	0.08	0.08	0.08	0.08	0.08	0.08	0.03	0.03	0.03	0.03	0.03	0.03	0.03	0.03			
100	0.10	0.09	0.11	0.11	0.10	0.11	0.11	0.09	0.04	0.04	0.05	0.05	0.04	0.05	0.05	0.04			
105	0.11	0.11	0.11	0.11	0.11	0.12	0.12	0.11	0.05	0.06	0.06	0.06	0.06	0.06	0.06	0.06			
110	0.11	0.12	0.12	0.12	0.12	0.13	0.13	0.12	0.07	0.07	0.08	0.08	0.07	0.08	0.08	0.07			
115	0.13	0.13	0.13	0.13	0.13	0.14	0.14	0.13	0.09	0.09	0.09	0.09	0.09	0.09	0.09	0.09			
120	0.15	0.15	0.15	0.16	0.16	0.16	0.16	0.15	0.11	0.10	0.11	0.11	0.11	0.11	0.11	0.10			
125	0.18	0.18	0.18	0.19	0.19	0.19	0.19	0.18	0.13	0.13	0.13	0.13	0.13	0.13	0.13	0.13			
130	0.23	0.23	0.23	0.23	0.24	0.24	0.24	0.23	0.16	0.15	0.15	0.15	0.15	0.16	0.15	0.15			
135	0.28	0.28	0.29	0.29	0.30	0.30	0.29	0.28	0.18	0.18	0.17	0.18	0.18	0.18	0.17	0.18			
140	0.35	0.36	0.38	0.38	0.38	0.39	0.37	0.35	0.20	0.19	0.20	0.20	0.20	0.20	0.20	0.20			
145	0.44	0.46	0.48	0.49	0.50	0.49	0.47	0.44	0.22	0.21	0.23	0.24	0.24	0.23	0.23	0.23			
150	0.51	0.55	0.57	0.58	0.58	0.58	0.56	0.53	0.24	0.23	0.25	0.26	0.26	0.26	0.25	0.26			
155	0.60	0.63	0.64	0.65	0.66	0.65	0.64	0.61	0.28	0.27	0.29	0.29	0.29	0.29	0.28	0.30			
160	0.66	0.67	0.68	0.70	0.69	0.70	0.69	0.67	0.33	0.32	0.32	0.31	0.32	0.32	0.31	0.34			
165	0.66	0.66	0.67	0.68	0.70	0.69	0.69	0.67	0.35	0.35	0.34	0.35	0.34	0.34	0.34	0.37			
170	0.63	0.63	0.62	0.63	0.64	0.64	0.64	0.64	0.39	0.39	0.37	0.37	0.37	0.37	0.37	0.40			
175	0.61	0.60	0.59	0.58	0.57	0.58	0.60	0.61	0.46	0.46	0.45	0.43	0.43	0.42	0.44	0.47			
180	0.53	0.51	0.50	0.49	0.49	0.50	0.53	0.54	0.53	0.53	0.52	0.50	0.49	0.50	0.51	0.53			

C Range: 0 - 360DEG
 C Interval: 22.5DEG
 Test Speed: HIGH
 Temperature:25.4DEG
 Operators:Carl
 Test Date:2022-06-02

γ Range: 0 - 180DEG
 γ Interval: 1.0DEG
 Test System:EVERFINE GO-R5000_V2 SYSTEM V2.0.351
 Humidity:39%
 Test Distance:2.526m [K=1.0000]
 Remarks: