



LED Striplight fixture

Premium Series

ASD LED Strip-lights are the perfect replacement for an old, outdated fluorescent strip-light fixture. These fixtures are able to be surface, chain or pendant mounted and virtually eliminate maintenance as there no bulbs to change. Perfect for task lighting, workshops, retail stores, coves, storage area and more, they are available in 4' or 8' lengths.

Catalog number	
Notes	
Type	

FEATURES AND BENEFITS:

- ▶ 4ft and 8ft models available
- ▶ 0-10 v dimming standard
- ▶ No bulbs or ballasts to change
- ▶ Multiple fixture can be linked together
- ▶ Fixture may be surface, chain or pendant mounted
- ▶ Mounting hardware included
- ▶ Suitable for Damp location
- ▶ L70 life > 200, 000 hrs
- ▶ ETL certified
- ▶ DesignLights Consortium (DLC) listed (Classification: Premium)
- ▶ 5 Year warranty



ORDERING MATRIX:

Family	Modification	Size	Dimmable	Watts	CCT	Series
ASD-LSF	2	X	D	XX	XX	PRM
LED Striplight fixture		4 = 4 ft	Dimmable	24 = 24 W	40 = 4,000 K	Premium
		8 = 8 ft		40 = 40 W	50 = 5,000 K	
				64 = 64 W		

LED STRIPLIGHT FIXTURE:

Model	Type	Watts	Dimming	CCT	Lumens	Dimensions (LxWxH)
ASD-LSF2-4D2440PRM	4 ft	24 W	YES	4,000 K	3,000 lm	48 1/4" x 3 1/4" x 3 1/8"
ASD-LSF2-4D2450PRM	4 ft	24 W	YES	5,000 K	3,080 lm	48 1/4" x 3 1/4" x 3 1/8"
ASD-LSF2-4D4040PRM	4 ft	40 W	YES	4,000 K	5,060 lm	48 1/4" x 3 1/4" x 3 1/8"
ASD-LSF2-4D4050PRM	4 ft	40 W	YES	5,000 K	5,060 lm	48 1/4" x 3 1/4" x 3 1/8"
ASD-LSF2-8D6440PRM	8 ft	64 W	YES	4,000 K	8,390 lm	96" x 3 1/4" x 3 1/8"
ASD-LSF2-8D6450PRM	8 ft	64 W	YES	5,000 K	8,654 lm	96" x 3 1/4" x 3 1/8"



LED Striplight fixture

Premium Series

PRODUCT SPECIFICATIONS:

Construction & Materials				
Lens	Translucent white lens			
Housing	Iron			
Finish Color	White			
Weight	4ft	4.85 lb (2.20 kg)	8ft	8.34 lb (3.78 kg)
Environmental System				
Work Environment	Suitable for Damp Locations, IP20			
Operating Temperature	-4°F to 131°F (-20°C to 55°C)			
L70 life	> 200,000 hrs			
Optical System				
Luminous Flux	ASD-LSF2-4D2440PRM	3,000 lm	ASD-LSF2-4D4050PRM	5,060 lm
	ASD-LSF2-4D2450PRM	3,080 lm	ASD-LSF2-8D6440PRM	8,390 lm
	ASD-LSF2-4D4040PRM	5,060 lm	ASD-LSF2-8D6450PRM	8,654 lm
Color Temperature	4,000 K, 5,000 K			
CRI	80			
Electrical System				
Input Voltage	100-277VAC 50/60 Hz			
Max input current	ASD-LSF2-4D2440PRM	400 mA	ASD-LSF2-4D4050PRM	600 mA
	ASD-LSF2-4D2450PRM		ASD-LSF2-8D6440PRM	800 mA
	ASD-LSF2-4D4040PRM	600 mA	ASD-LSF2-8D6450PRM	
Inrush current	ASD-LSF2-4D2440PRM	30 A	ASD-LSF2-4D4050PRM	40 A
	ASD-LSF2-4D2450PRM		ASD-LSF2-8D6440PRM	60 A
	ASD-LSF2-4D4040PRM	40 A	ASD-LSF2-8D6450PRM	
Action time (Inrush current)	1s			
AC input range	min 90 V max 300 V			
Off State Power	0 W			
Power Consumption	ASD-LSF2-4D2440PRM	24 W	ASD-LSF2-4D4050PRM	40 W
	ASD-LSF2-4D2450PRM		ASD-LSF2-8D6440PRM	64 W
	ASD-LSF2-4D4040PRM	40 W	ASD-LSF2-8D6450PRM	
Power Factor	≥ 0.9			
Output voltage	18-40 V DC			
Max output current	ASD-LSF2-4D2440PRM	600 mA	ASD-LSF2-4D4050PRM	1,0 A
	ASD-LSF2-4D2450PRM		ASD-LSF2-8D6440PRM	1,5 A
	ASD-LSF2-4D4040PRM	1,0 A	ASD-LSF2-8D6450PRM	
LED driver class	Class 2			

DIMMING COMPATIBLE CONTROLS

MFG	Model Number	
Lutron	DVSTV-WH	NFTV-WH
Leviton	DS710-102	DD710-BLZ

Regular and Voluntary Certifications

5-year limited warranty	
DesignLights Consortium (DLC) listed (Classification: Premium)	
Certification	ETL

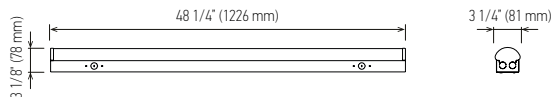
This fixture features Integrated dimming and can be 0-10vdc, to save energy and achieve specific light levels.



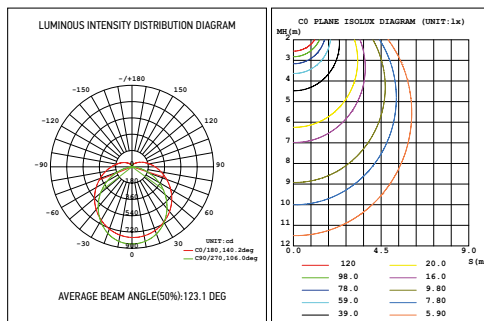
LED Striplight fixture

Premium Series

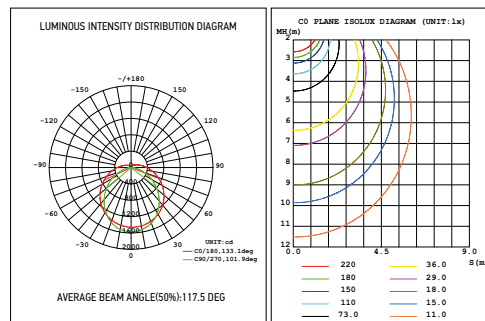
4ft



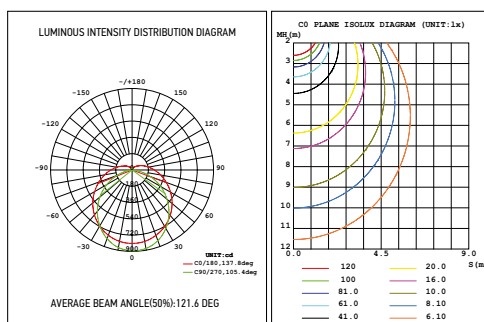
ASD-LSF2-4D2440PRM



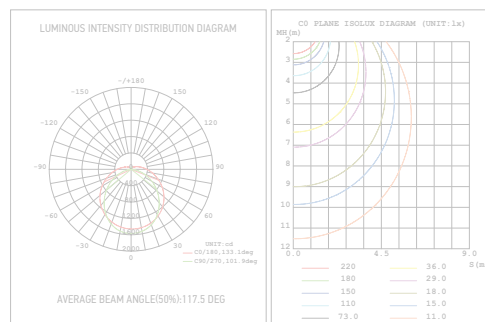
ASD-LSF2-4D4040PRM



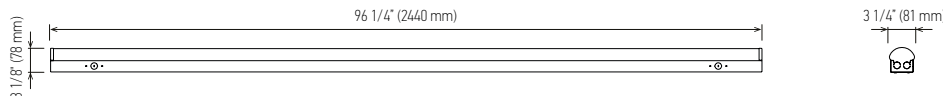
ASD-LSF2-4D2450PRM



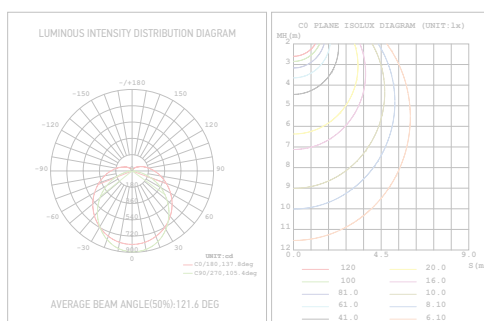
ASD-LSF2-4D4050PRM



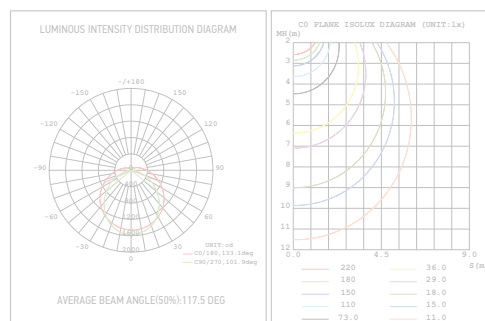
8ft



ASD-LSF2-8D6440PRM



ASD-LSF2-8D6450PRM



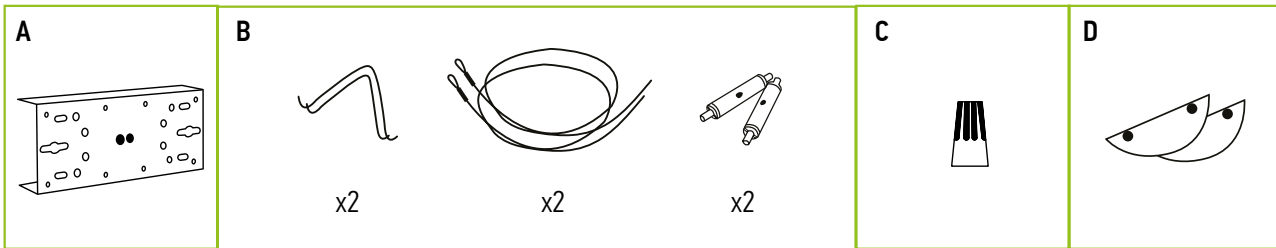


LED Striplight fixture

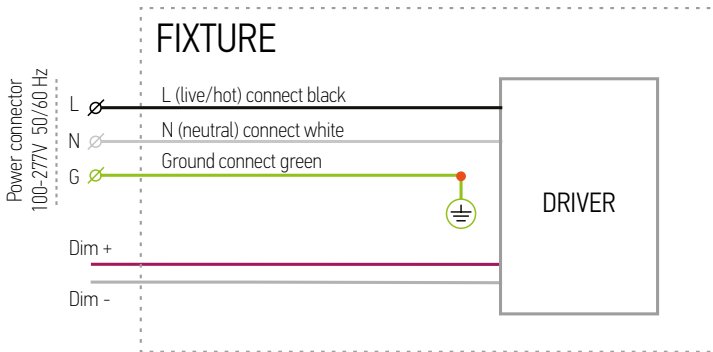
Premium Series

PACKAGE CONTENTS:

Description	Q-ty
LED Striplight Fixture	1
Bracket (A)	1
Chain mounting set with V-hooks (B)	6
Wire nuts (C)	5
Mounting plates (D)	2
Box	1
Installation Instructions	1



ELECTRICAL SCHEMATIC DIAGRAM



⚠ WARNING

RISK OF PERSONAL INJURY – READ and follow all WARNINGS and installation instructions.

Keep or give to the owner for future reference.

Risk of cuts: Wear gloves to prevent cuts or abrasions when removing from carton, handling, installing, and maintaining this product.

Risk of electric shock: This product must be installed in accordance with the applicable installation code by a person familiar with the construction and operation of the product and the hazards involved.

Risk of Fire: Minimum 194°F supply conductors. Consult a qualified electrician to ensure correct branch circuit conductor.

ASD® assumes no responsibility for claims arising out of improper or careless installation or handling of this product.

For recessed installation: Access above ceiling required. Inherently protected. Vapor barrier must be suitable for 90°C.



LED Striplight fixture

Premium Series

INSTALLATION GUIDE

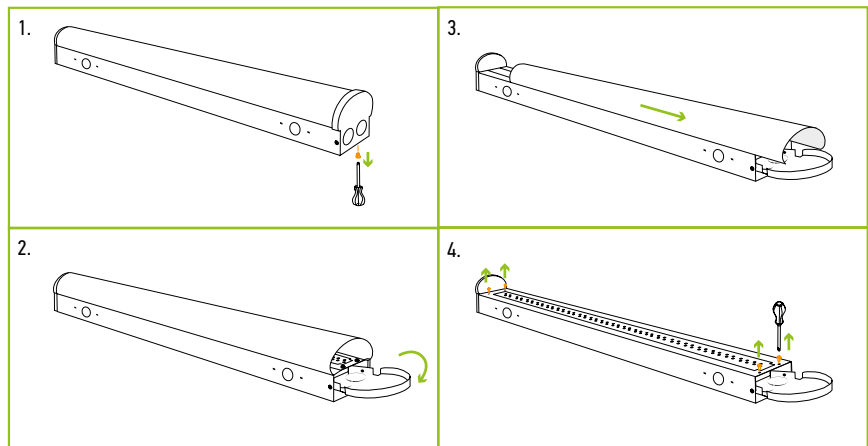
IMPORTANT SAFETY INFORMATION:

Please read all the instructions below before installation.

- ▶ Make sure that the supply voltage corresponds to the rated product voltage.
- ▶ The product must be installed by a qualified electrician in accordance with the National Electrical Code and corresponding local codes.
- ▶ If the product is damaged, do not use it.

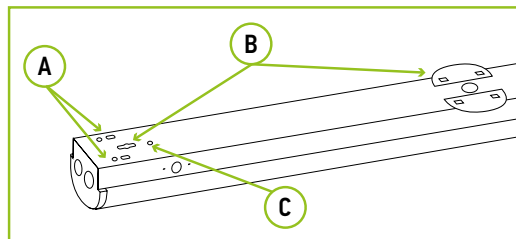
INSTALLATION STEPS

1. Remove screws on one side and back side of the fixture
2. Remove the cover on the same side
3. Remove the PC cover
4. Remove the screws on the PCB plate
5. Remove the PCB plate



INSTALLATION OPTIONS

- A. Chain and V hook
- B. Surface mount
- C. T-bar mount



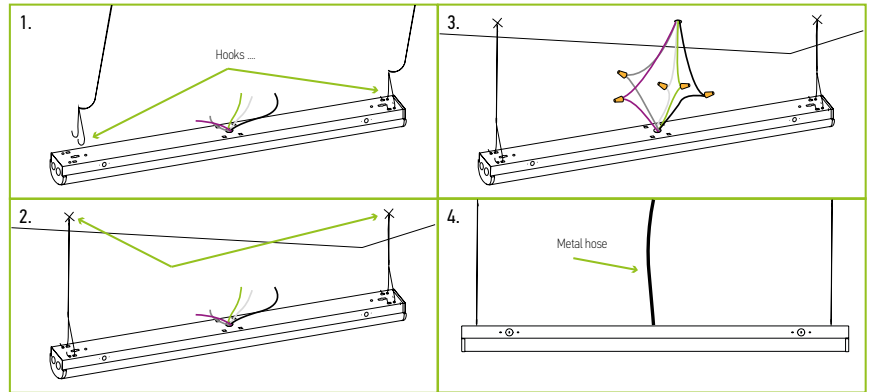


LED Striplight fixture

Premium Series

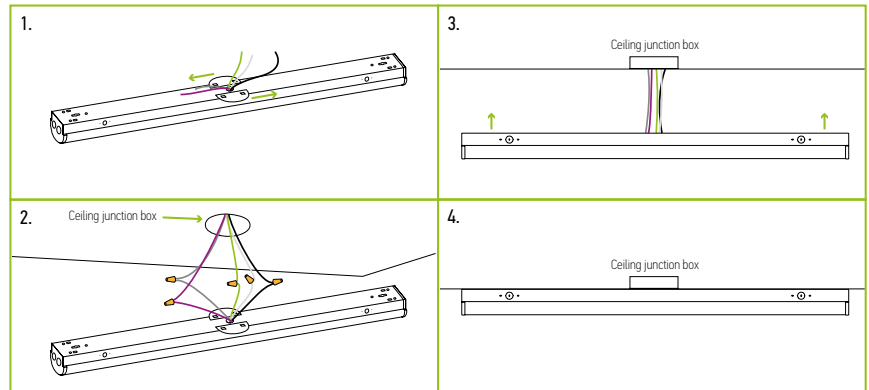
CHAIN AND V HOOK MOUNTING

1. Insert a chain on each hook and insert the hook into the installation hole
2. Attach the chain to the ceiling and adjust until balanced and secure
3. Take wires from the shielded cable and connect AC wires and dimming wires (if used)
4. Wrap the wires with metal materials.



SURFACE MOUNTING

1. Lock the mounting plate
2. Connect the AC wires and dimming wires (if used)
3. Lift the fixture and put wires in existing ceiling junction box
4. Secure fixture to ceiling



T-BAR CLIP INSTALLATION HOLE

1. Attach the fixture to the T-Bar ceiling grid with your existing T-Bar clips (customer supplied)
2. Refer to the diagram at the top of the page –Installation Option C

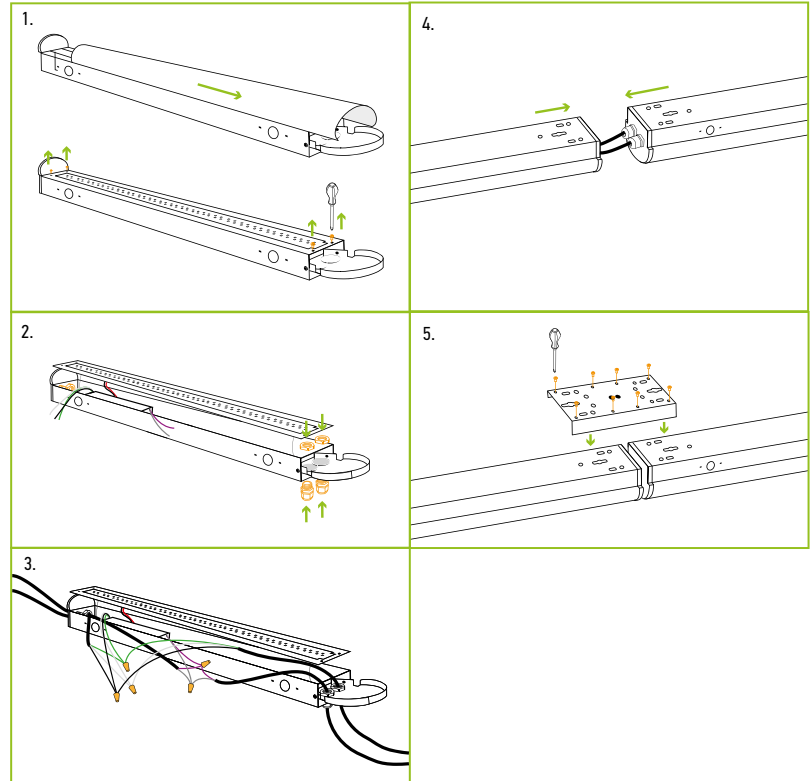


LED Striplight fixture

Premium Series

CONNECTING MULTIPLE FIXTURES

1. Remove the PC cover and PCB plate.
2. Attach compression fitting (customer supplied) and affix back the PCB plate and PC cover.
3. Feed the AC wires and dimming wires (customer supplied) through the knockout hole and connect with fixture wires inside of the luminaire – black to black, white to white, green to green/copper. Once wire connection are made, secure each with a wire nut. If 0-10v dimming system is available, connect the purple and gray wires to the corresponding purple and gray wires in the building dimming system.

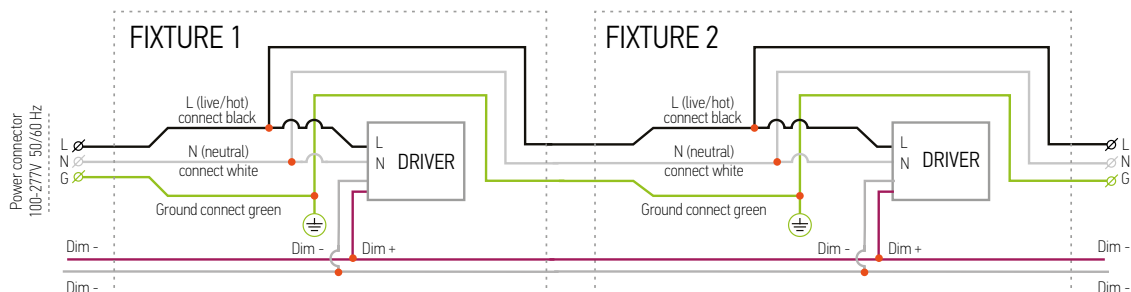


CAUTION: Customer supplied AC wire must be 18AWG. The maximum number of fixtures allowed to be linked together is indicated in the following table

4. Repeat the process for the next fixture.
5. Use the connection bracket to secure one fixture to another.

Model	Linkable Quantities Depending on Voltage		
	110V	200V	277V
24 W	18 pcs	32 pcs	50 pcs
40 W	11 pcs	20 pcs	27 pcs
64 W	11 pcs	20 pcs	27 pcs

ELECTRICAL SCHEMATIC DIAGRAM CONNECTING MULTIPLE FIXTURES





LED Striplight fixture

Premium Series

ORDERING INFORMATION

LED STRIPLIGHT FIXTURE:

Model	Watts	CCT	UPC	GTIN 14	Pcs in one Carton	Carton Size	Carton Weight
ASD-LSF2-4D2440PRM	24 W	4,000 K	819201020508	10819201020505	4	49.8" x 7.1" x7.3"	24.3 lbs
ASD-LSF2-4D2450PRM	24 W	5,000 K	819201022052	10819201022059	4	49.8" x 7.1" x7.3"	24.3 lbs
ASD-LSF2-4D4040PRM	40 W	4,000 K	819201020522	10819201020529	4	49.8" x 7.1" x7.3"	24.3 lbs
ASD-LSF2-4D4050PRM	40 W	5,000 K	819201023929	10819201023926	4	49.8" x 7.1" x7.3"	24.3 lbs
ASD-LSF2-8D6440PRM	64 W	4,000 K	819201023943	10819201023940	4	98.8" x 7.5" x7.7"	41.6 lbs
ASD-LSF2-8D6450PRM	64 W	5,000 K	819201026852	10819201026859	4	98.8" x 7.5" x7.7"	41.6 lbs